



İNAYA KARA

DESIGN PORTFOLIO




TABLE OF CONTENTS

PROJECT 1 STUDENT LOUNGE CENTER 4

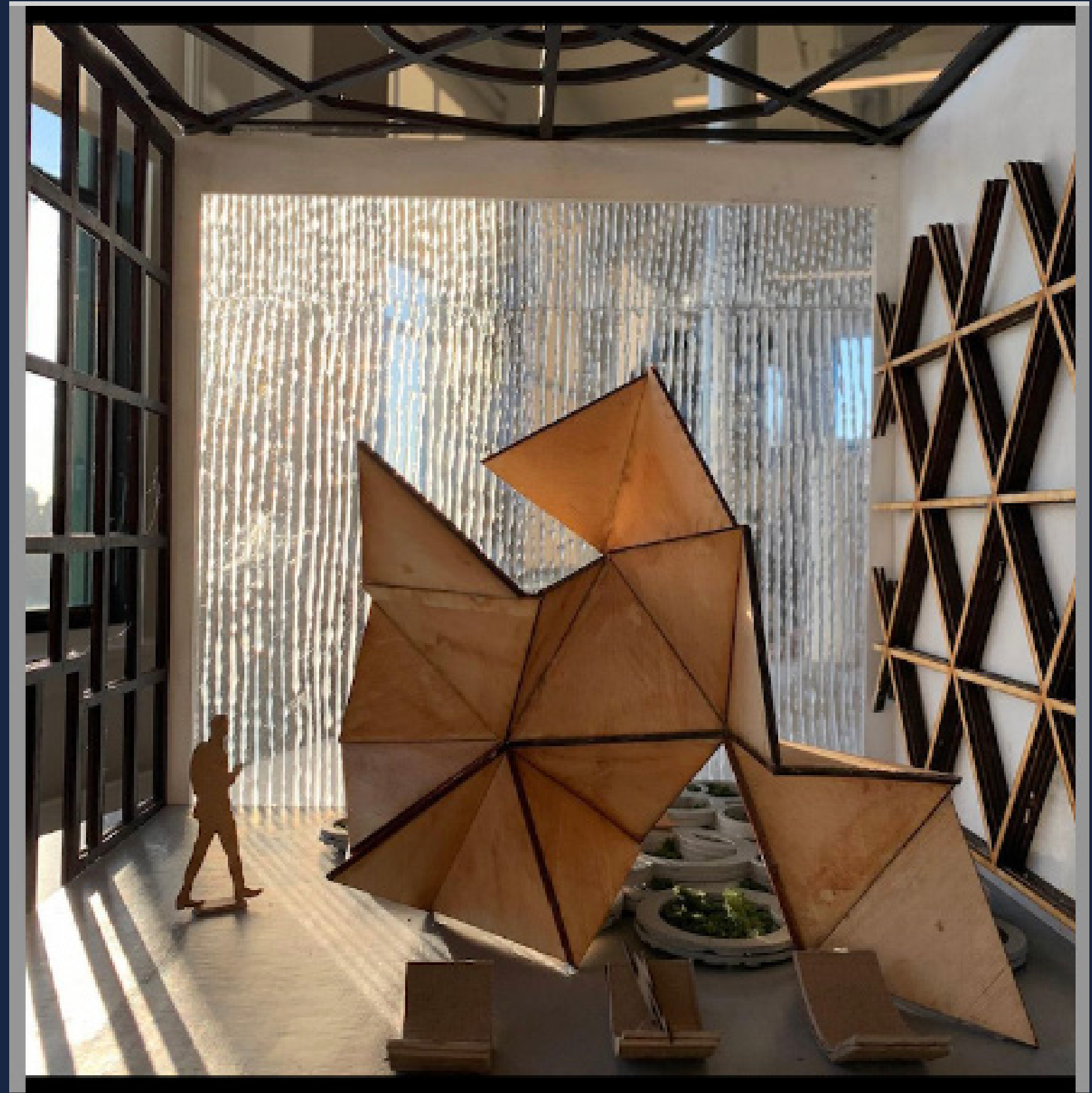
PROJECT 2 FARMER'S MARKET 10

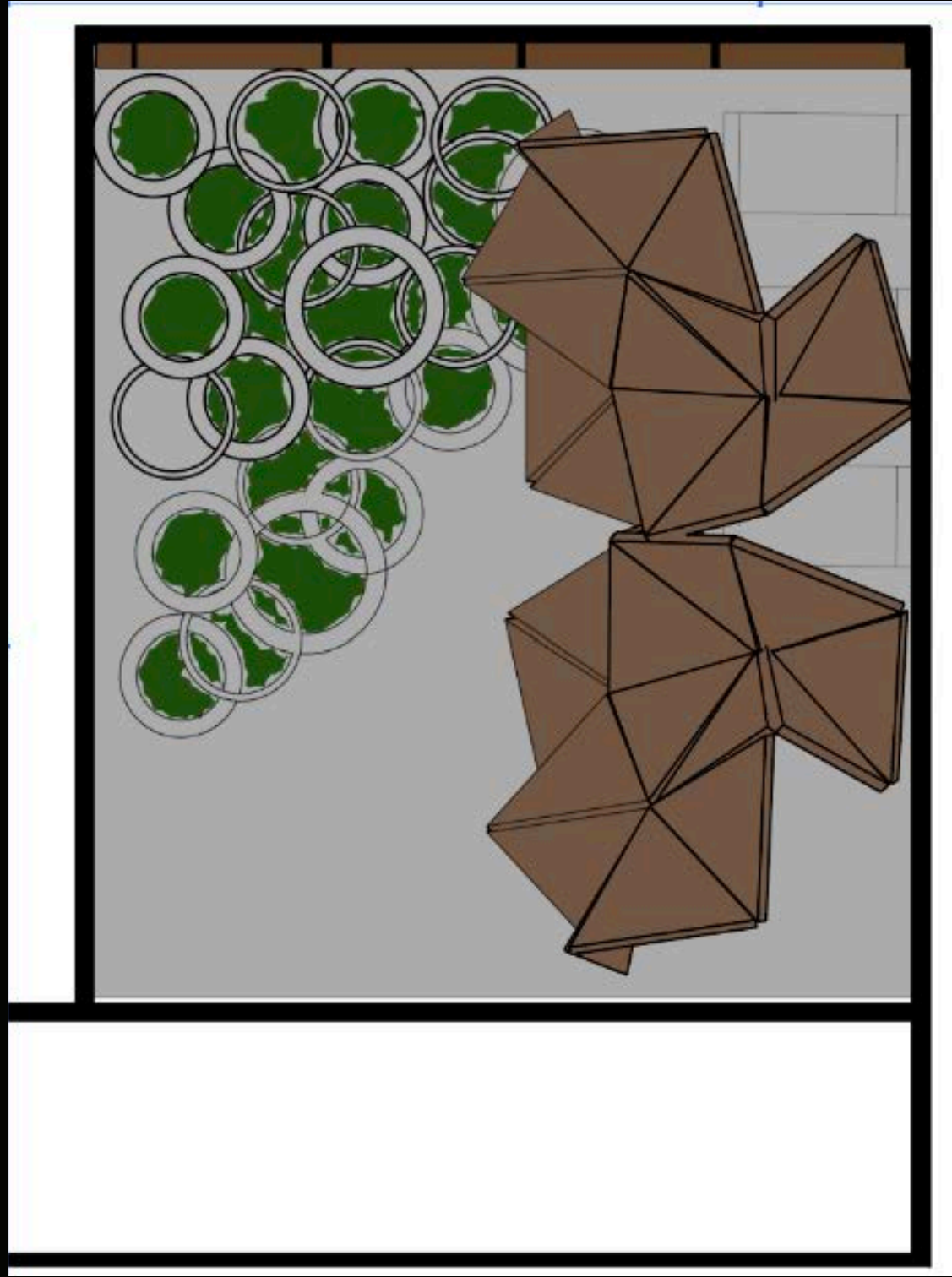
PROJECT 3 THE CHRONIC COLLECTIVE 20

PROJECT 4 INTERIOR HOME REDESIGN 28

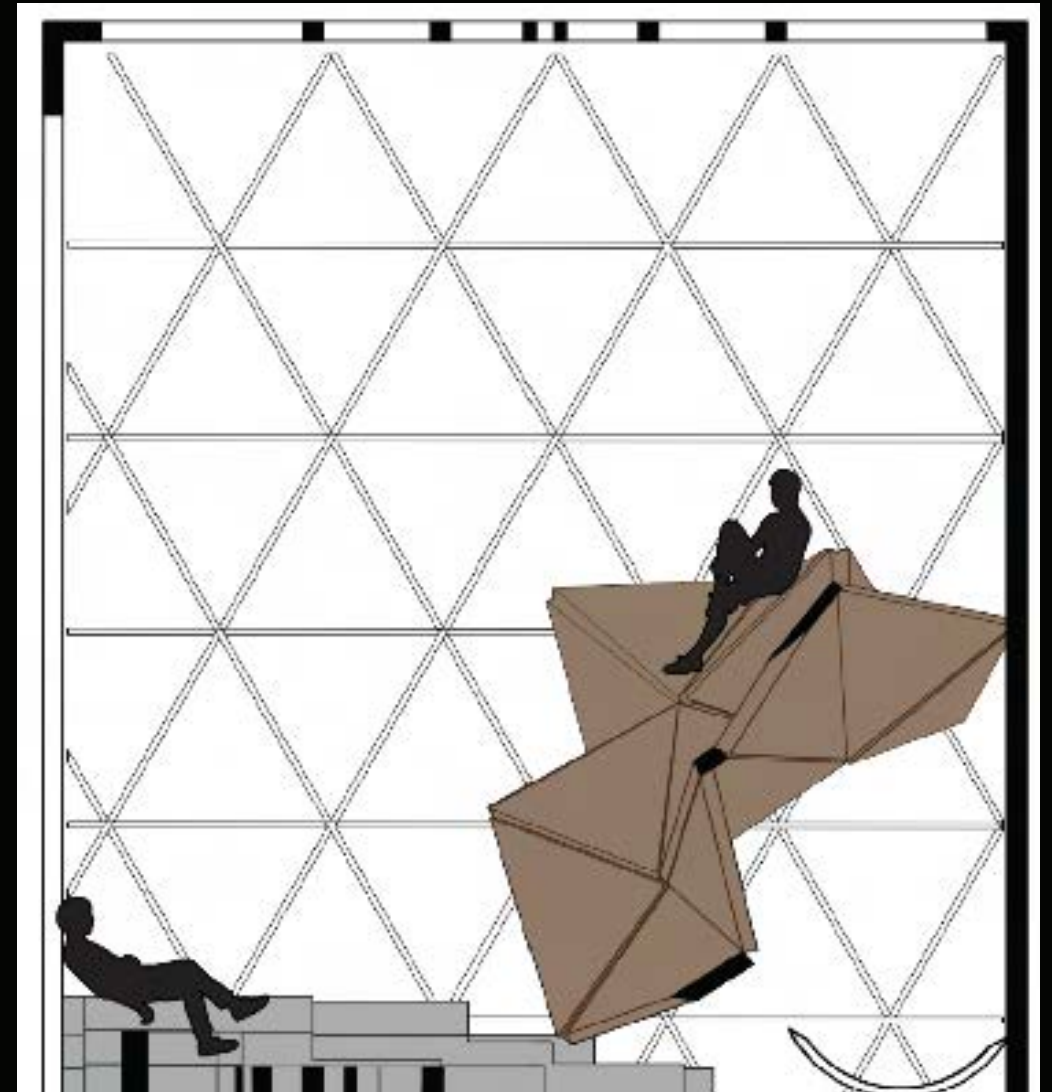
STUDENT LOUNGE CENTER

Interior Designers were asked to redesign an interior double heightened skyroom in the 12th floor of the Parsons Interior Design Department. With geometry and elements of nature, I utilized drawing and physical model making to create a student recreational space with a large water wall, lush greenery in studio steps, sleeping spaces, and an undulated climbing wall.





PLAN



SECTION

EXPLODED AXON



Skylight provides adequate natural lighting allowing for a refreshing glow in the space.

Geometric wall for climbing, also creating a private space underneath for sleeping.

Circular cement studio steps featuring greenery allow students to rest and socialize next to the water wall taking in the soothing sound

Sleeping pods that can rock back and forth allow students to relax in a semi-private zone created by the undulated wall.



PHYSICAL MODEL



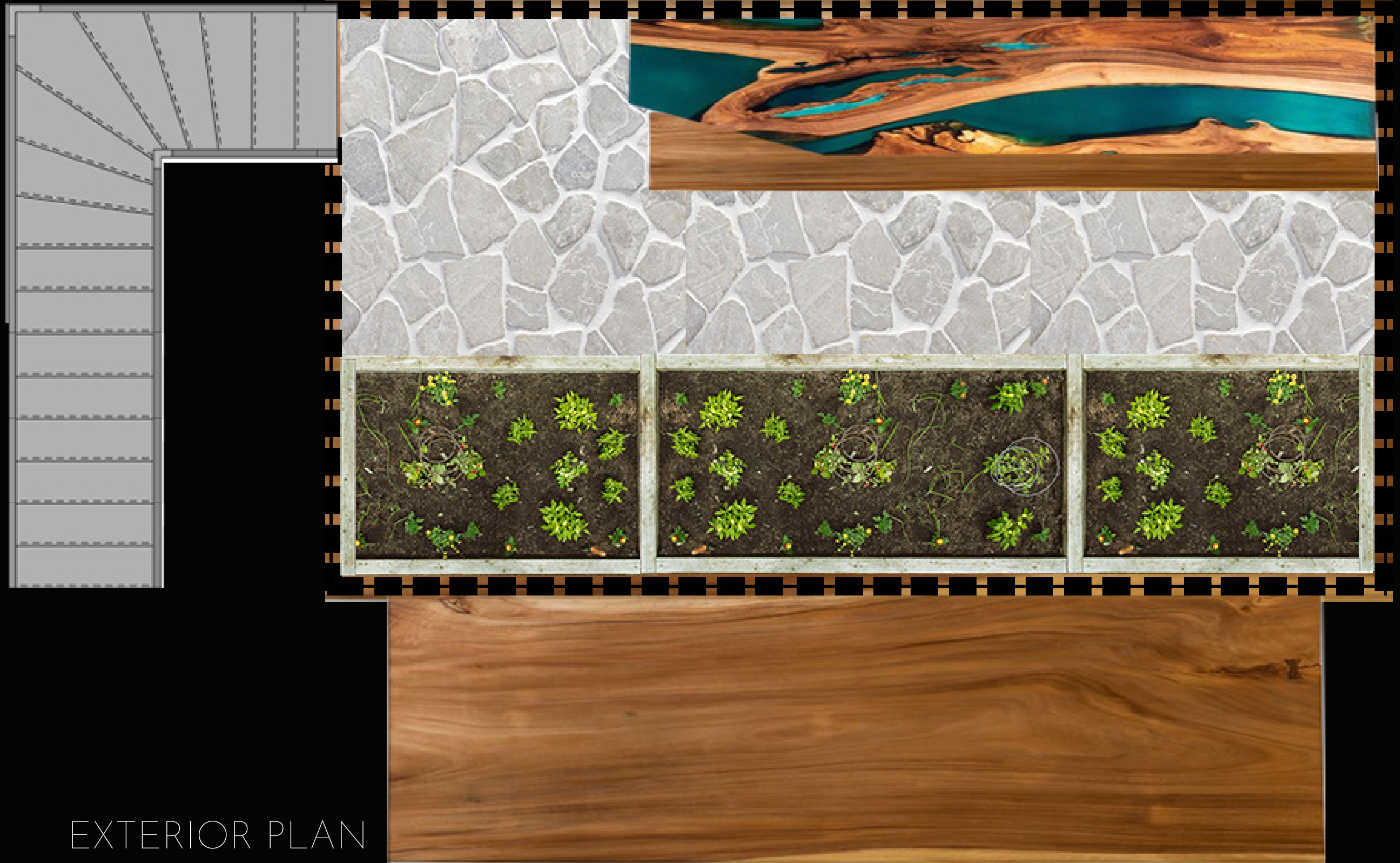
FARMER'S MARKET

PICK, PLANT, PEEL

This is a pop up shop in a shipping container parked outside a library in lower Manhattan. It is a mini farmer's market where people can buy produce, try the produce at a juice bar in the back, and grow produce on the terrace upstairs. Utilizing AutoCAD drawings and physical model making to bring this idea to life.



INTERIOR PLAN



EXTERIOR PLAN



INTERIOR ELEVATION



EXTERIOR ELEVATION



PHYSICAL MODEL

For my Interior Design thesis, I utilized digital image making and designed a community center dedicated for people with chronic illness, entitled The Chronic Collective. The space features a tree-like structure that connects the whole building. The space utilizes art therapy to help with healing, and people's creations are displayed on a gallery spiral around the middle of the tree.

THE CHRONIC COLLECTIVE

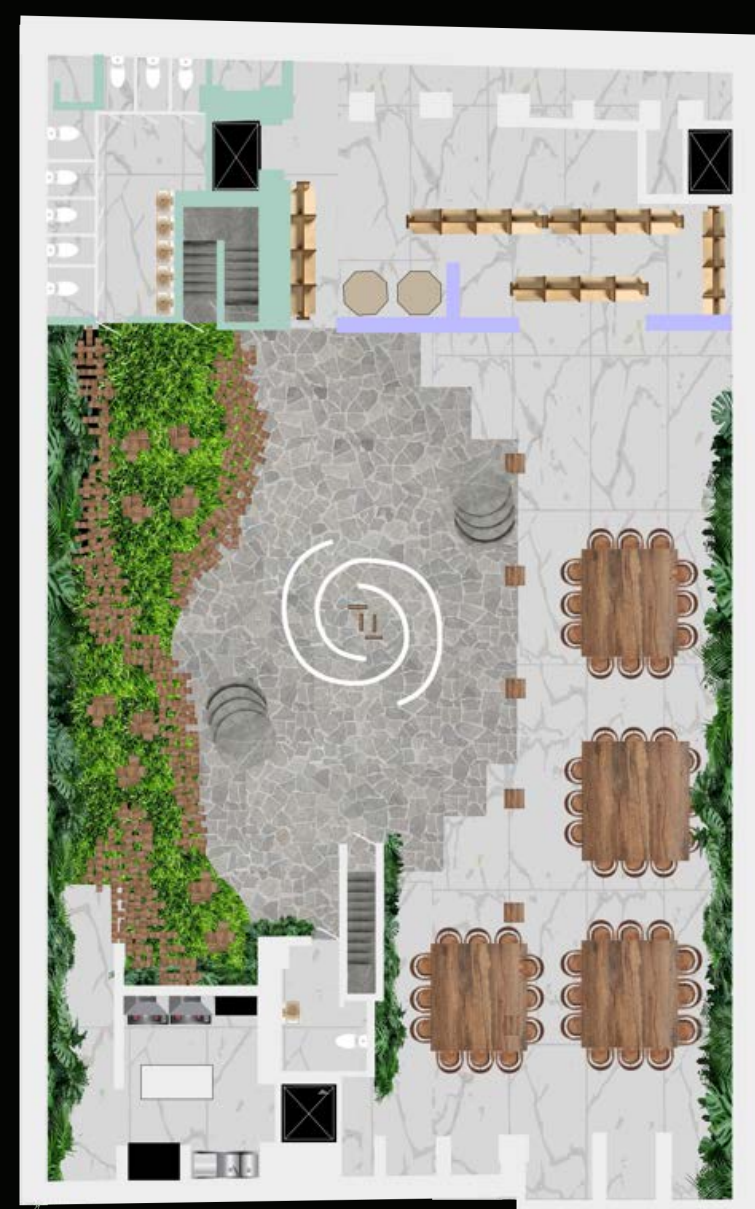




TREE PLAN



GROUND FLOOR PLAN

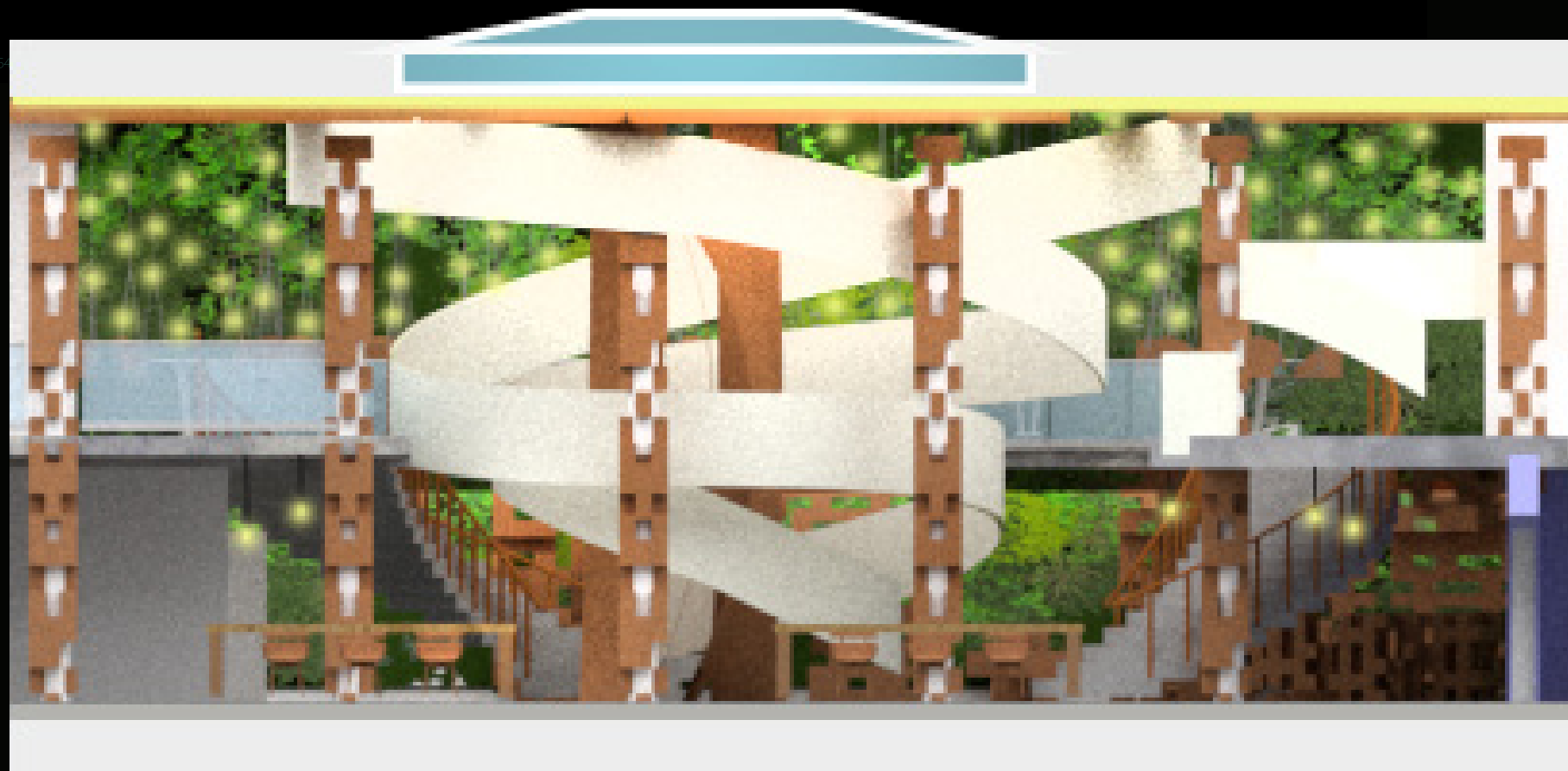
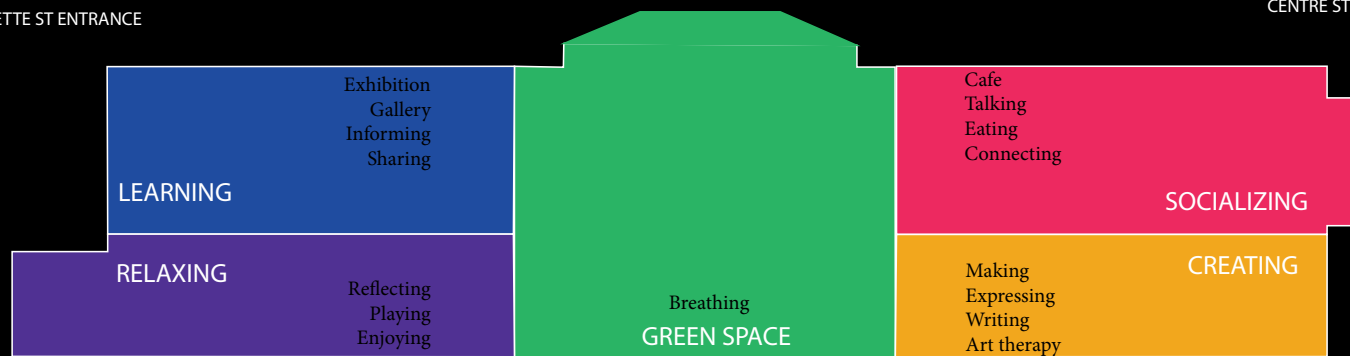


BOTTOM FLOOR PLAN

PROGRAMMING

LAFAYETTE ST ENTRANCE

CENTRE ST ENTRANCE



SECTION ELEVATION



LIGHTING



PERSPECTIVE RENDERING

INTERIOR HOME REDESIGN

I got the opportunity to redesign a 1300 sq ft house. From choosing new furniture, to wall tiles, flooring, paint colors, and materiality. Worked with the contractor to change the kitchen island from two levels to one level. Through this project I got to revive the home's feel and the family's quality of life.



MOOD BOARD



KITCHEN



BEFORE



AFTER

LIVING ROOM



BEFORE



AFTER

BATHROOM

