

**meg rodi**  
**architecture portfolio**  
cal poly SLO  
2019 - 2024



meg rodi

san luis obispo, ca

college of architecture and  
enviromental design

WINTER SPRING 2023 - Pas De Brew

---

FALL 2022 - Movement

---

SPRING 2022 - thinkTANK

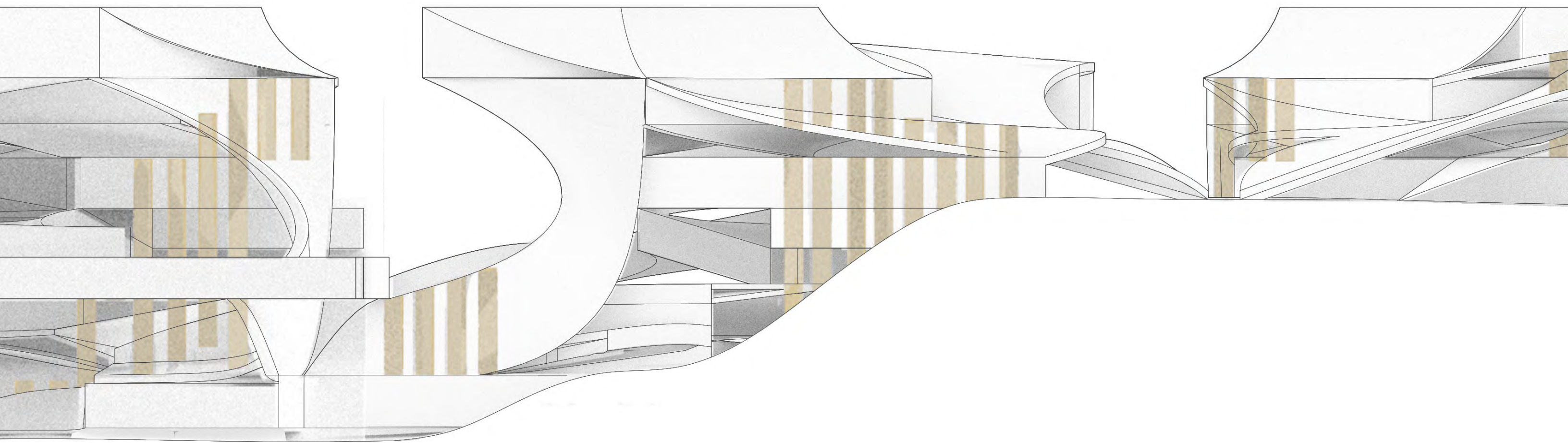
---

WINTER 2021 - Excavate

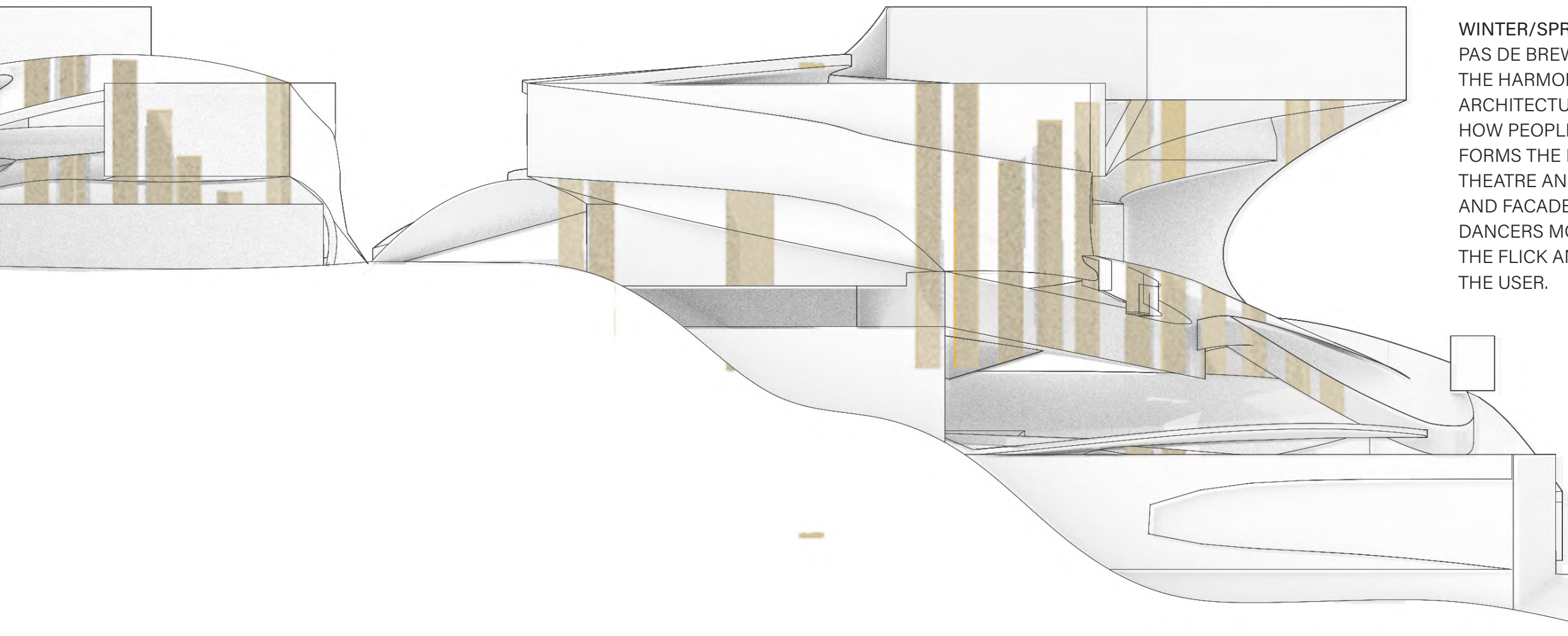
---

Thesis 2024 - Dis-ordering Domestic Dimensions

---





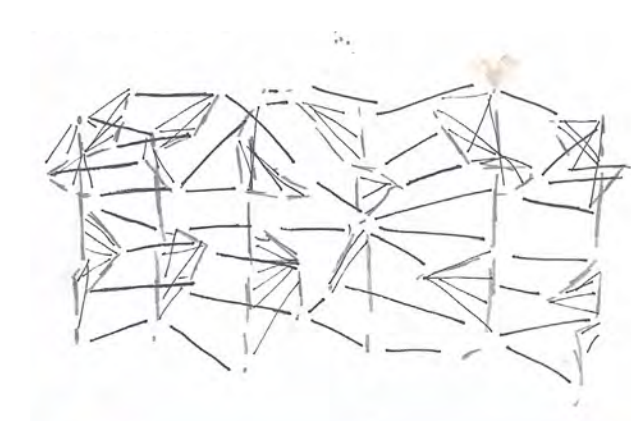
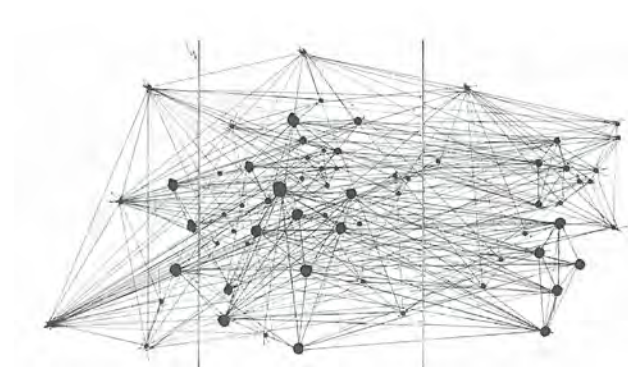


## PAS DE BREW

WINTER/SPRING 2022

PAS DE BREW IS A PROJECT THAT BRINGS TOGETHER THE HARMONY OF MIXOLOGY AND METHODOLOGY. AS ARCHITECTURE ACTS AS THE CHOREOGRAPHY OF HOW PEOPLE MOVE THROUGH A SPACE PAS DE BREW FORMS THE DANCE OF ITS DESIGN BY BLENDING THE THEATRE AND BREWERY TOGETHER. WITH THE FORM AND FACADE BEING DIRECTLY INFLUENCED BY A DANCERS MOTION AND SOUNDWAVE FREQUENCIES THE FLICK AND FLOAT OF BUILDING FORM IMPACTS THE USER.

Project circulation and form designed from the physical movement of a dancer, reflecting her movements into spatial concepts.

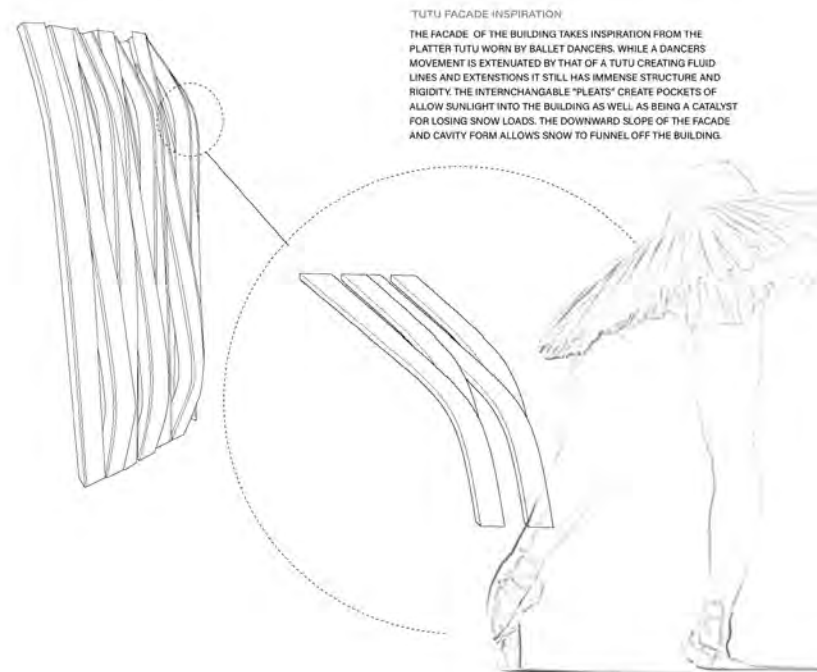
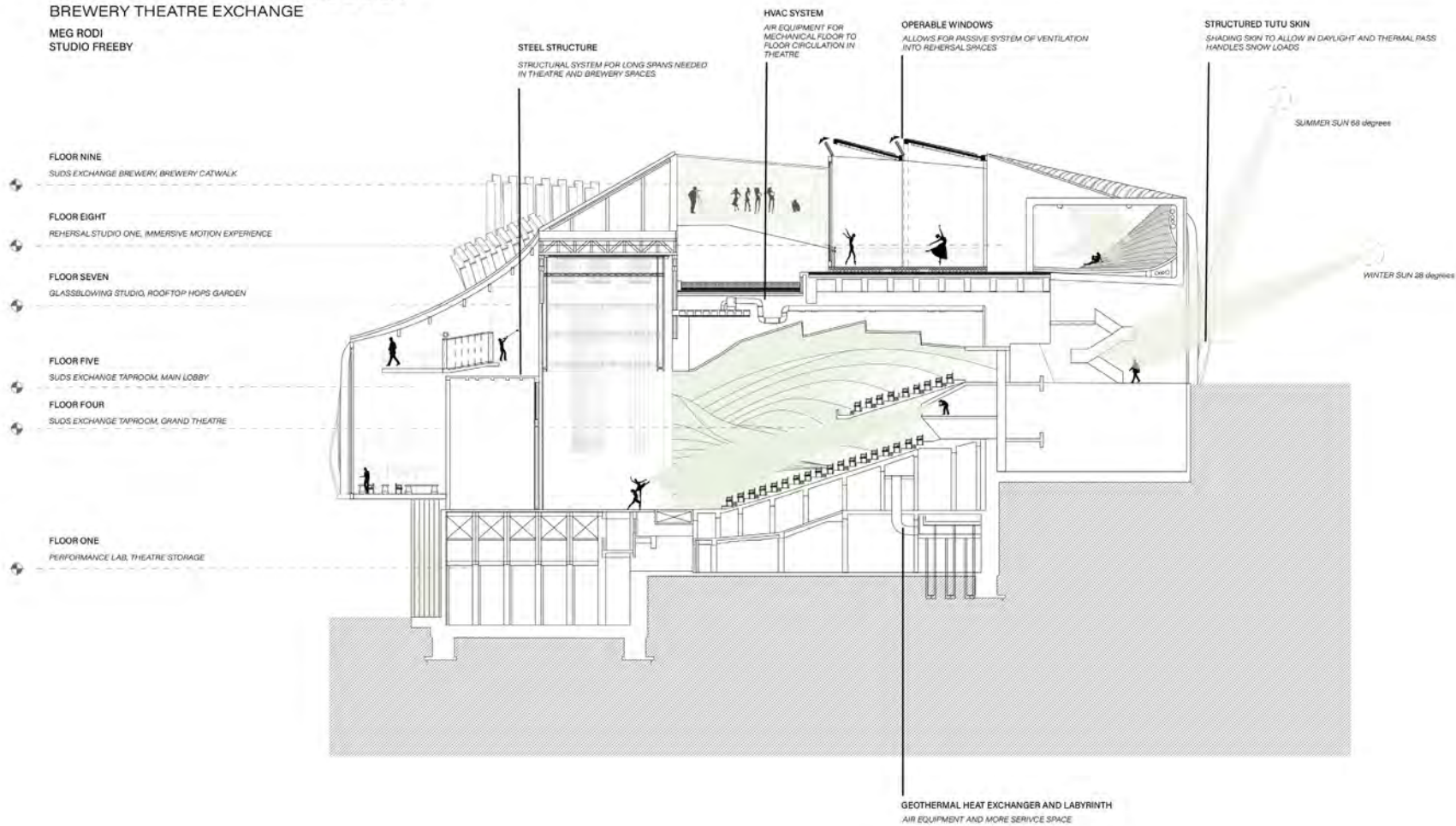


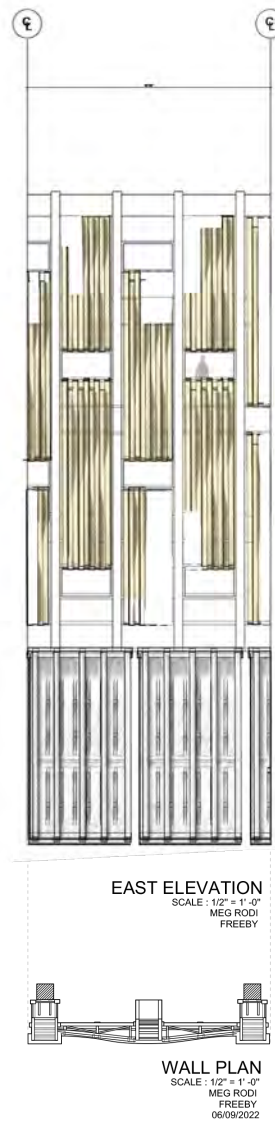
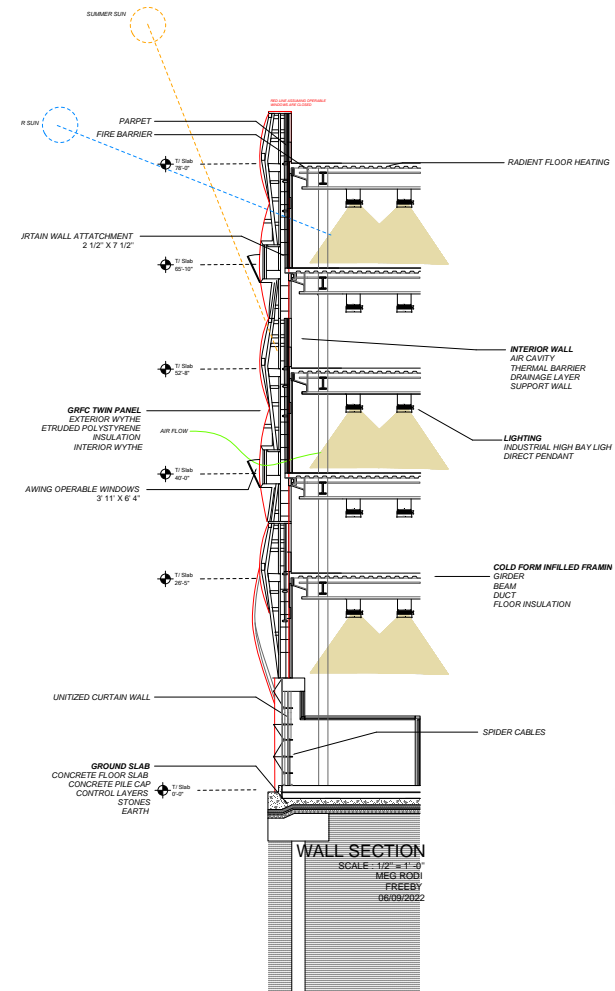
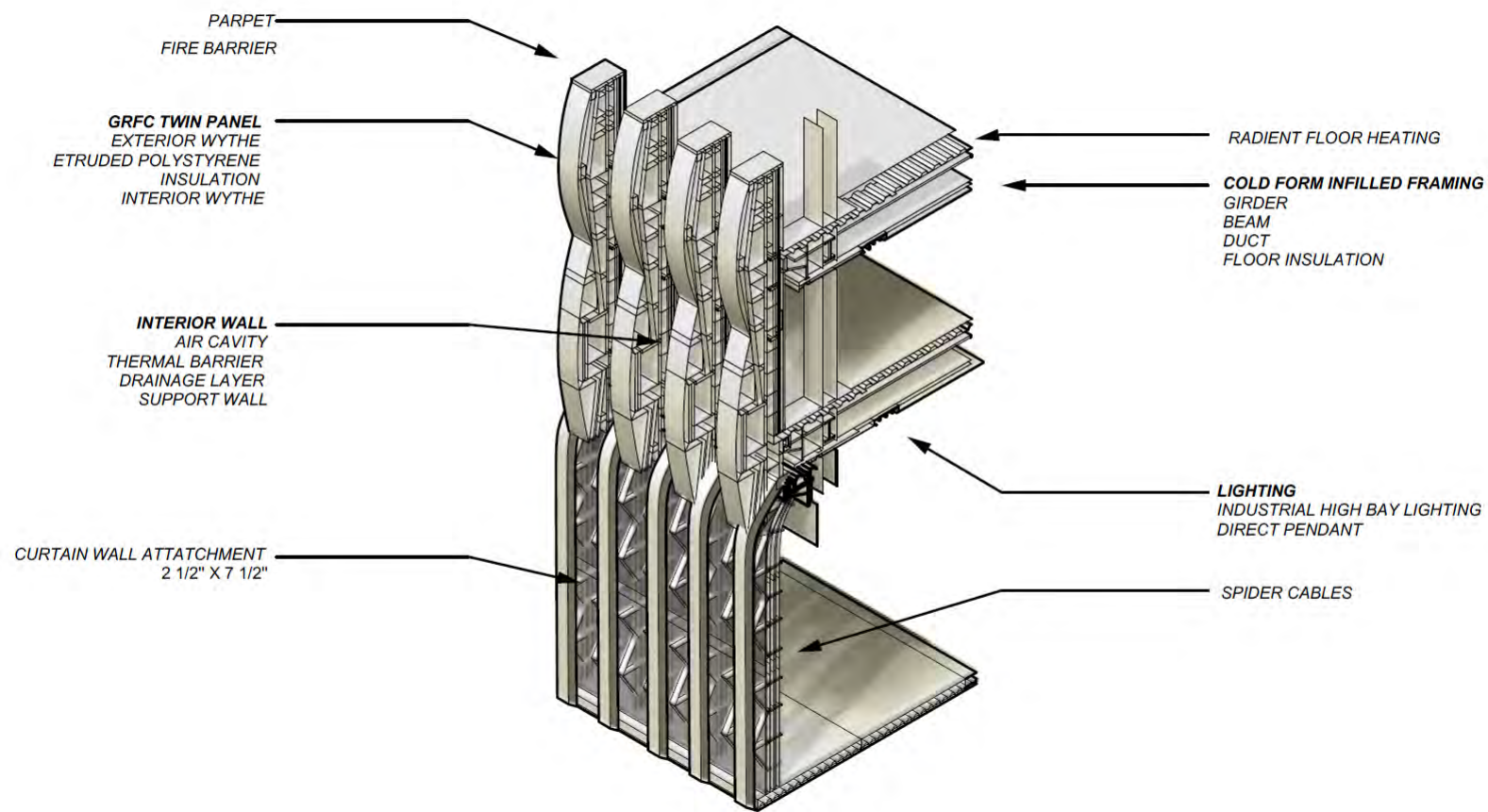


MIXOLOGY & METHODOLOGY

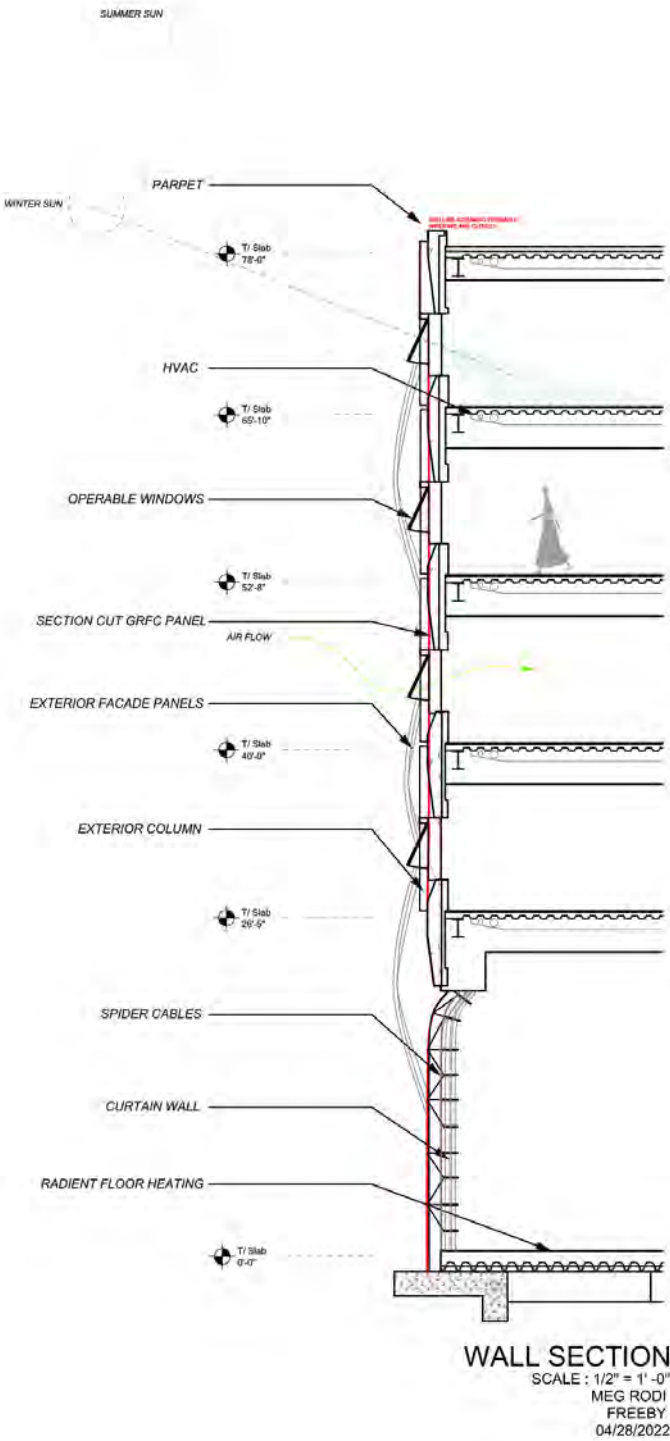
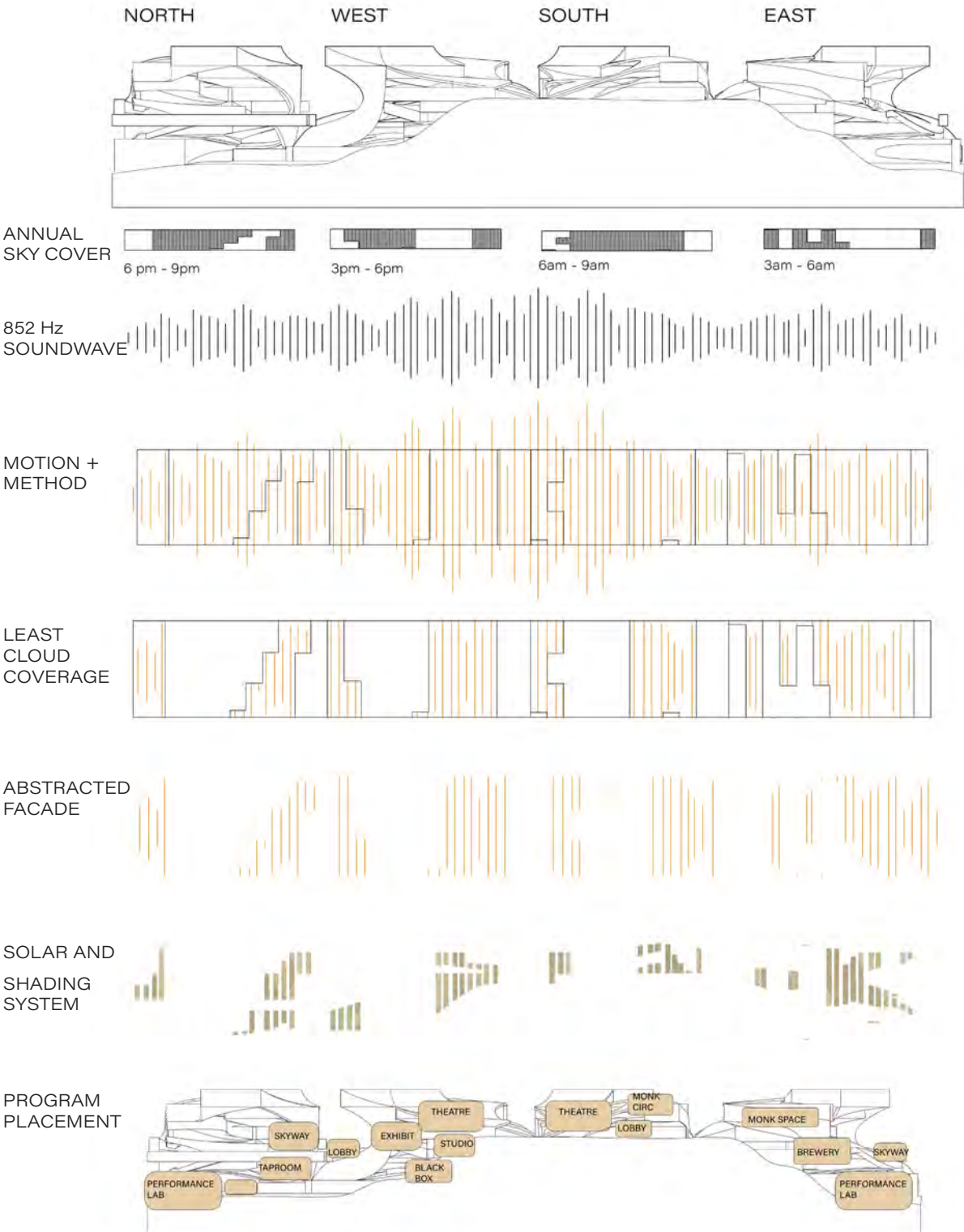
BREWERY THEATRE EXCHANGE

MEG RODI  
STUDIO FREEBY





FACADE PLANNING

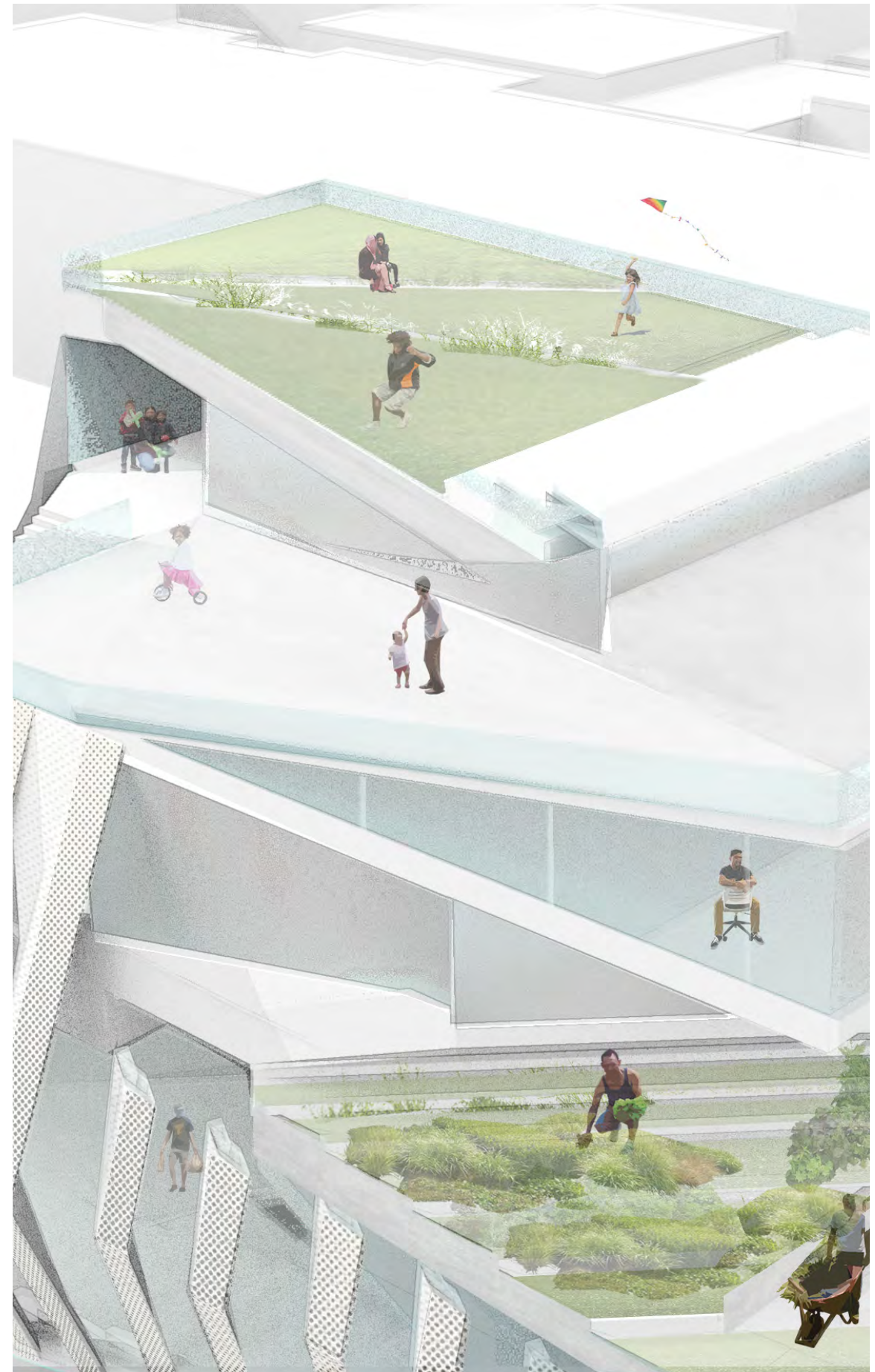


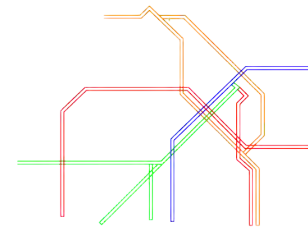
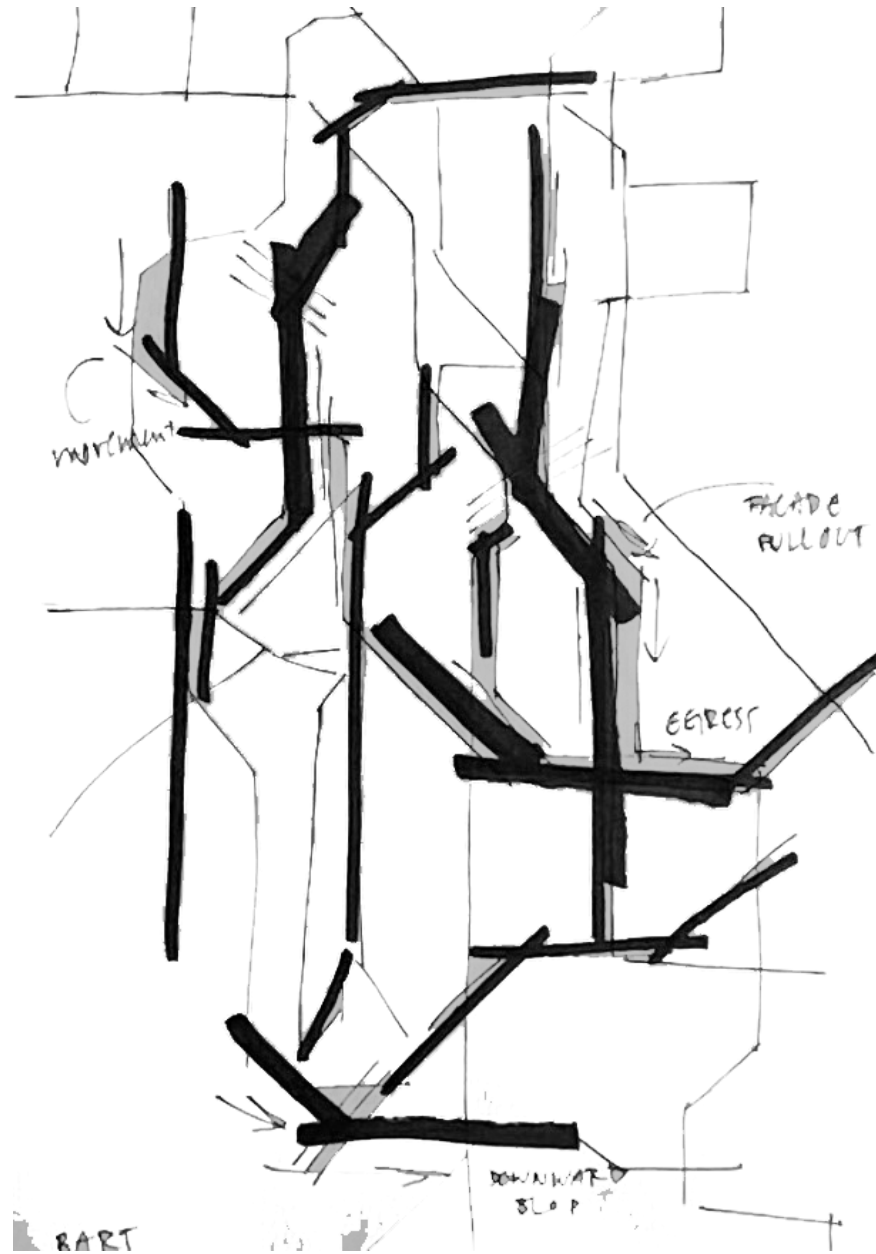


## MOVEMENT IS THE MISSION, MISSION IS THE MOVEMENT

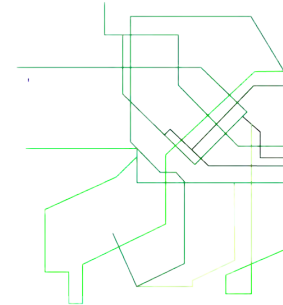
FALL 2021

LOCATED ON THE CORNER OF THE 16TH STREET BART STATION, THE MISSION DISTRICT FOOD AND COMMUNITY CENTER IS A PLACE OF COLLABORATION AND CHANGE. BEING A HYBRID BUILDING WITH A MULTITUDE OF PROGRAMS, THIS PUBLIC SPACE CREATES OPPORTUNITY AND FREEDOM FROM EVERYDAY LIFE. INSPIRED BY THE BART STATION TRAVEL ROUTES THE FORM OF THE BUILDING UNRAVELS WITH ANGLED SPACES. THE BUILDING'S SKIN ACTS AS A SHELL AROUND THE FORM TO ALLOW AIR TO PASS THROUGH THE BUILDING AND PUSHES CLEAN AIR THROUGH THE BIO-FILTERED SKIN. THIS SPACE ACTS AS AN ACTIVE PLAZA THAT UNFOLDS AND IMPROVES VISIBILITY AND CONNECTIVITY TO THE BART AND SURROUNDING SPACE.

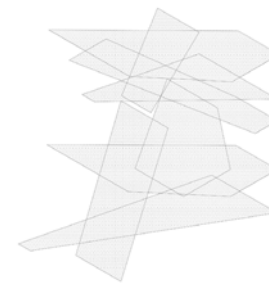
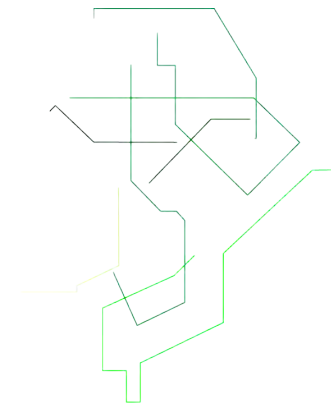




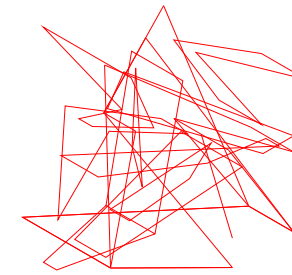
BART travel



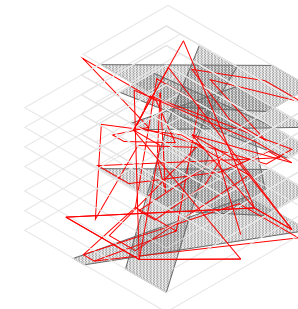
connection



public void



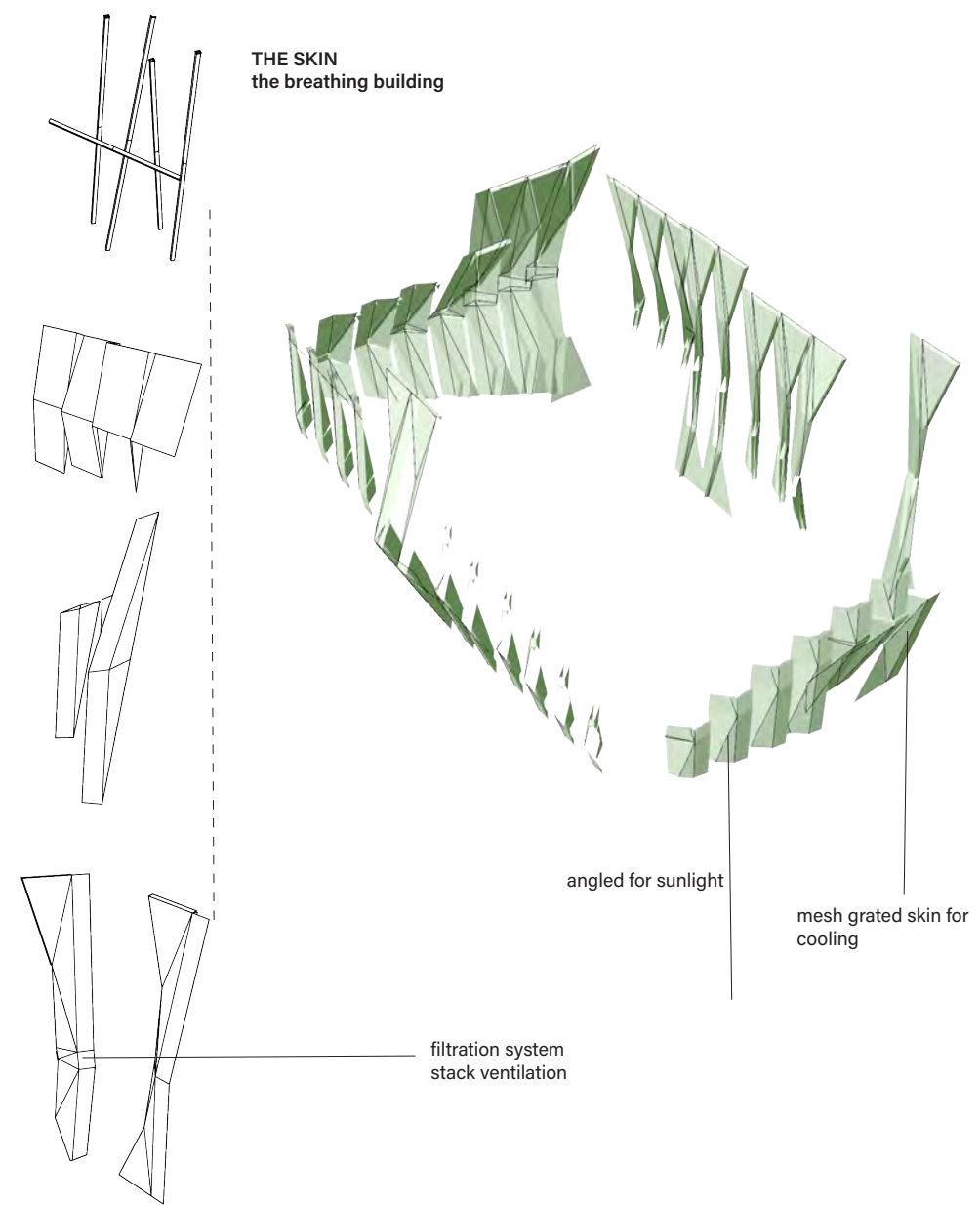
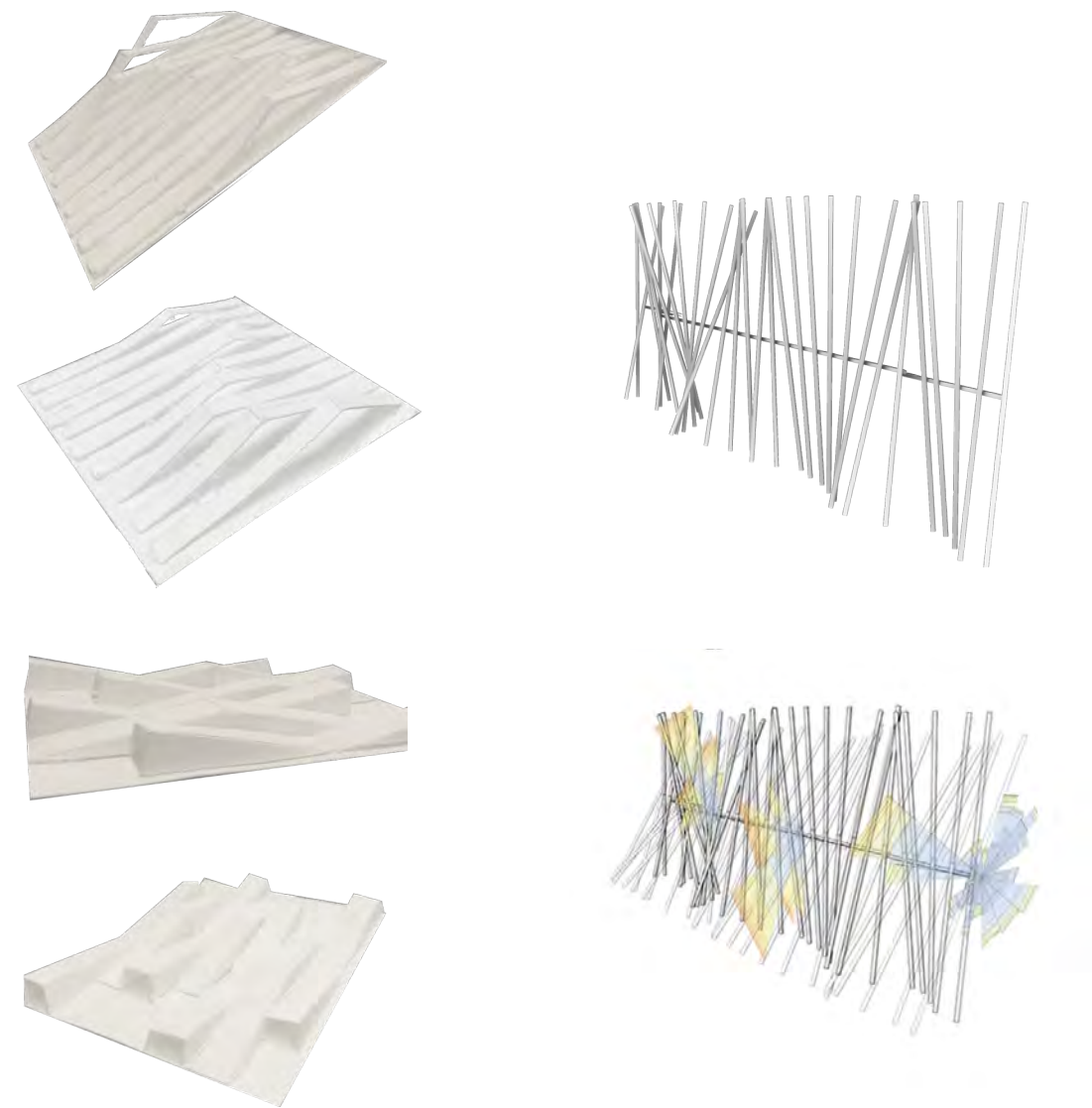
lines for surface  
geometry and  
circulation



create the  
concept

Based off of the BART formation, space and circulation dictates program.





Facade studies based on temperature swings in San Francisco.





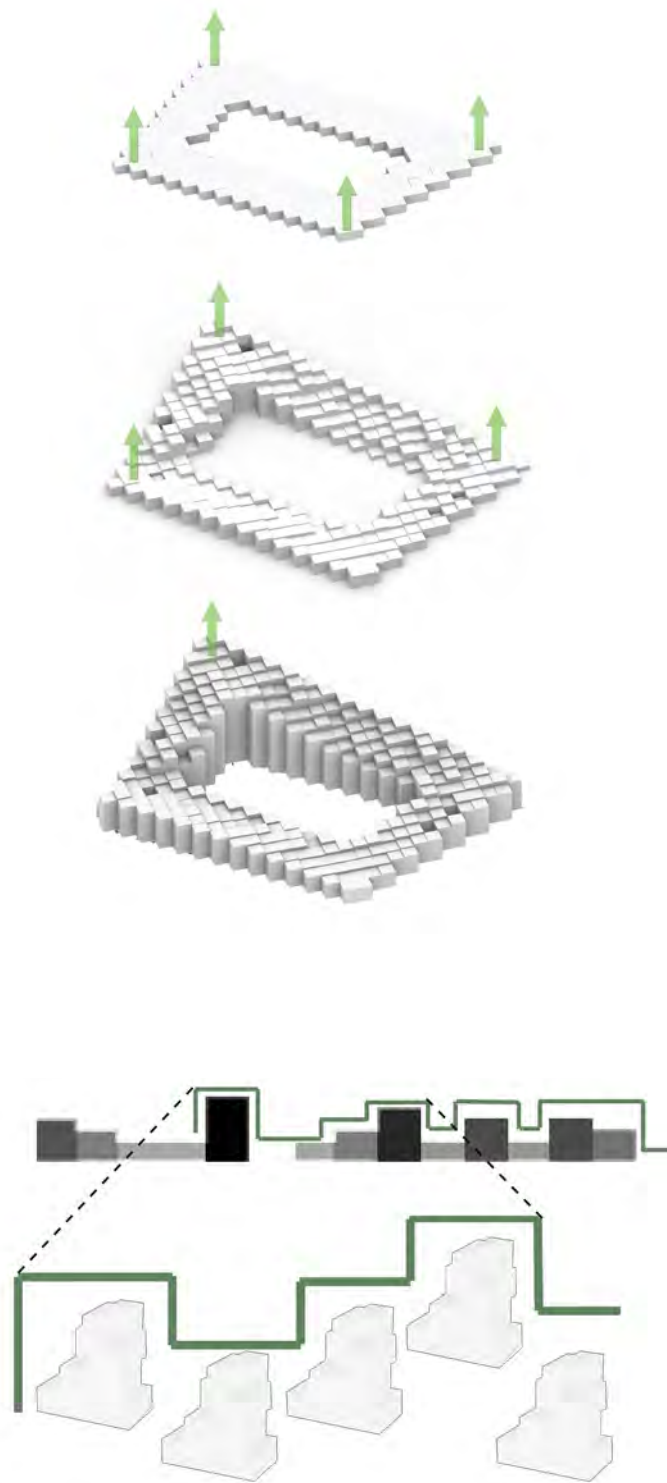
An architectural site plan for a housing cluster named 'thinkTANK'. The plan shows a large, irregularly shaped building footprint composed of several interconnected rectangular blocks, creating a 'pixelated' form. The building is situated on a sloping site, with green areas representing landscaped spaces and a winding path or water feature. Numerous small human figures are scattered throughout the site, particularly in open areas and along the path, indicating a densely populated environment. The overall design aims to integrate urban housing with nature and community spaces.

## thinkTANK

SPRING 2021

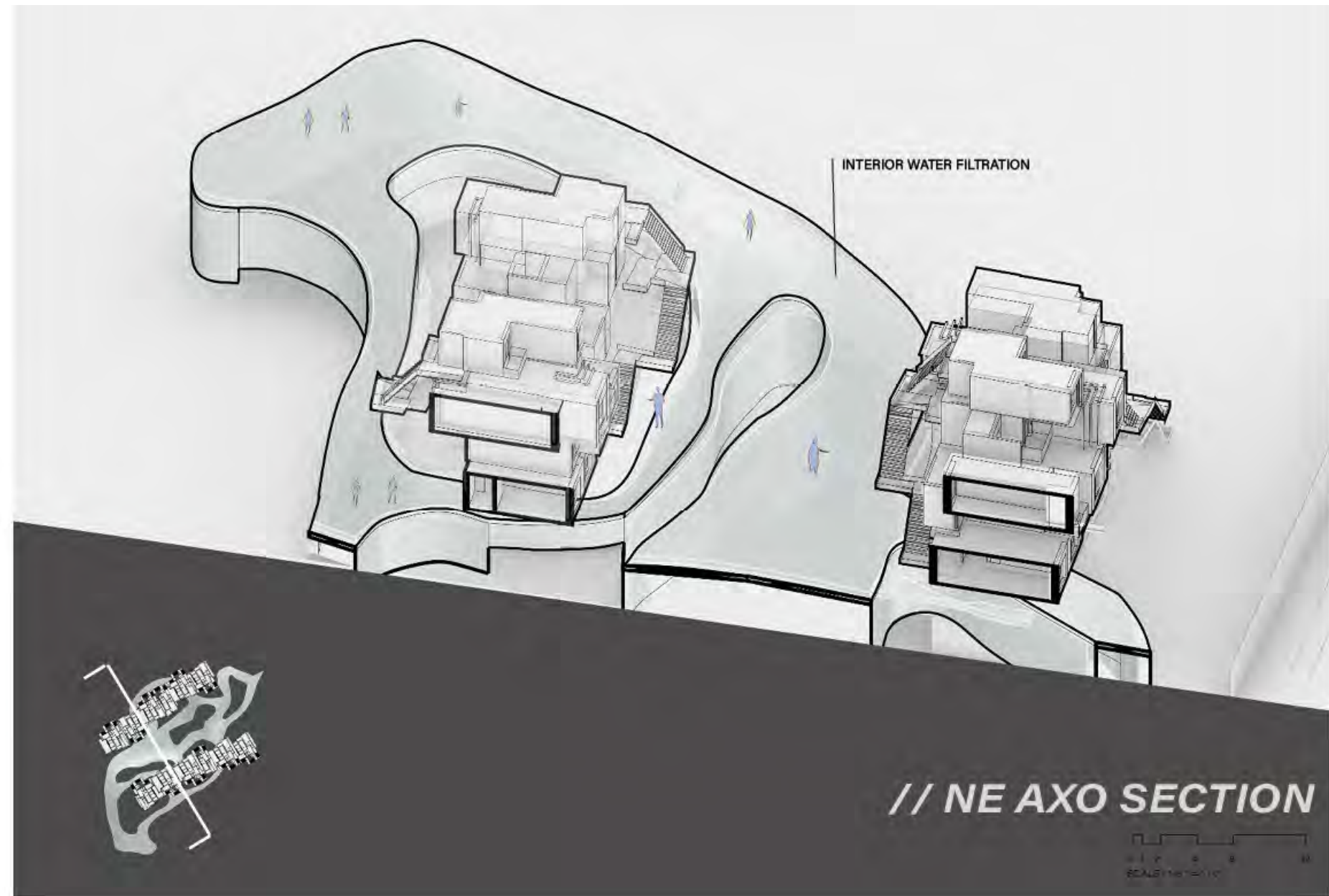
A SPACE TO CREATE A DIVERSE COMMUNITY INTEGRATED INTO THE DOWNTOWN CORE WHILE RECONNECTING THE CITY WITH NATURE TO CREATE AN URBAN ENVIROMENT AND LANDSCAPE. WITH A PIXALATED FORM, THIS HOUSING CLUSTER AIMS TO REDESIGN FOR THE FUTURE OF DETROIT TO BE A DENSELY POPULATED CITY WHILE SIMULTANEOUSLY FILTERING WATER AS AN ACT OF WATER PURIFYING.





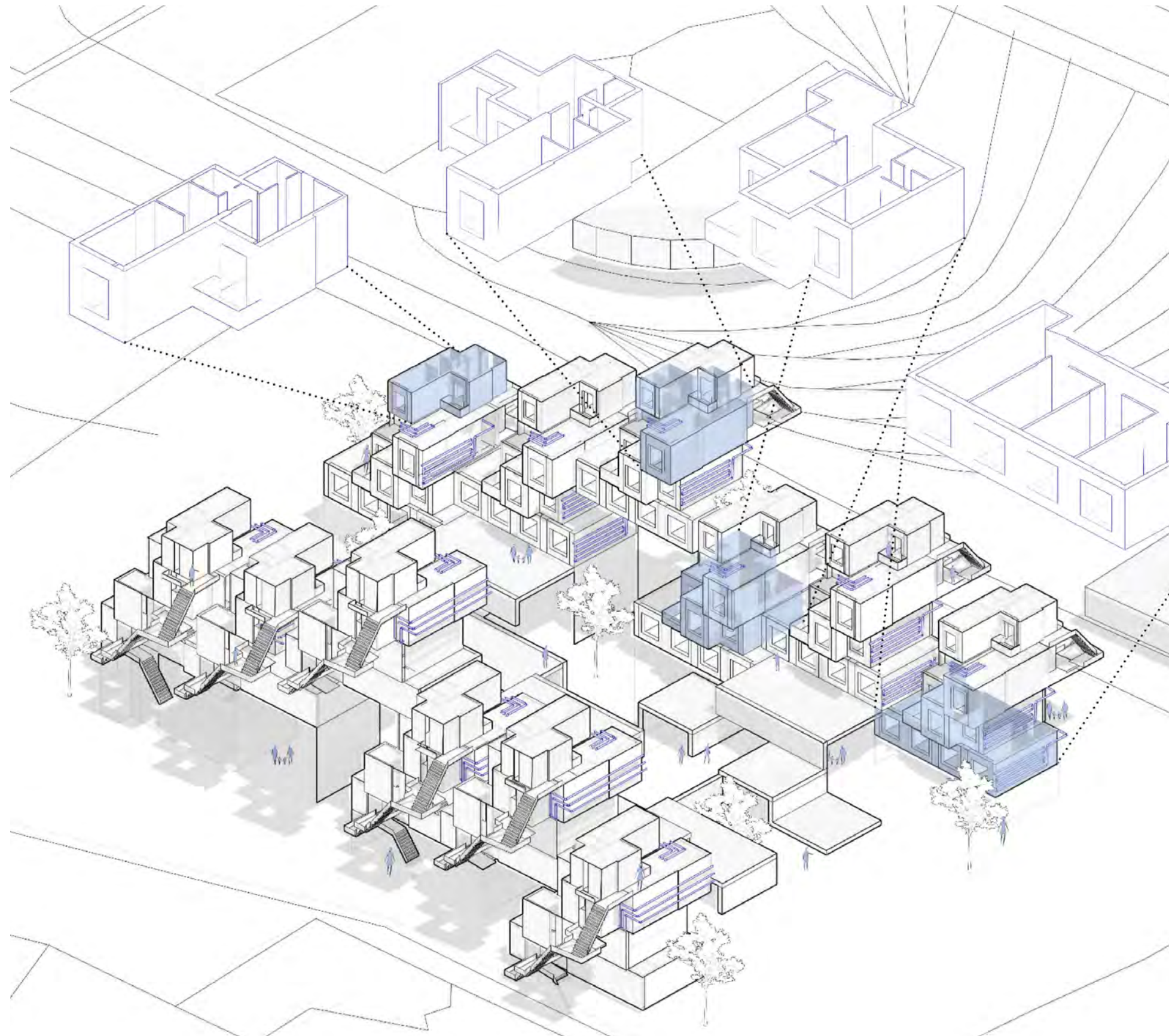
Population charts and and watercolors based on population density dictate the glitched form of the multi- family housing.

With multiple unit sizes, the formation of the units follow the population trends.

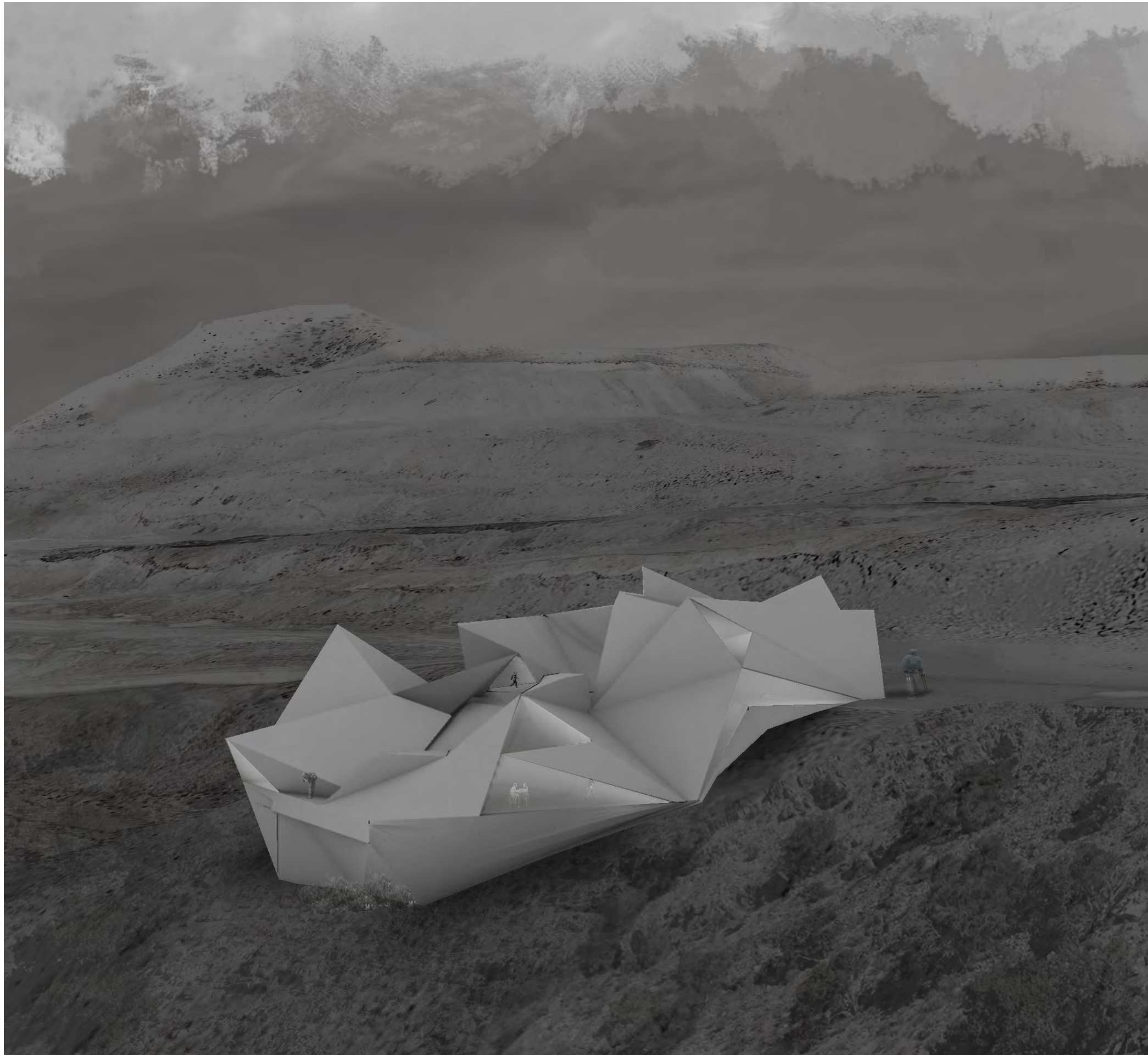


Water(color) filtration







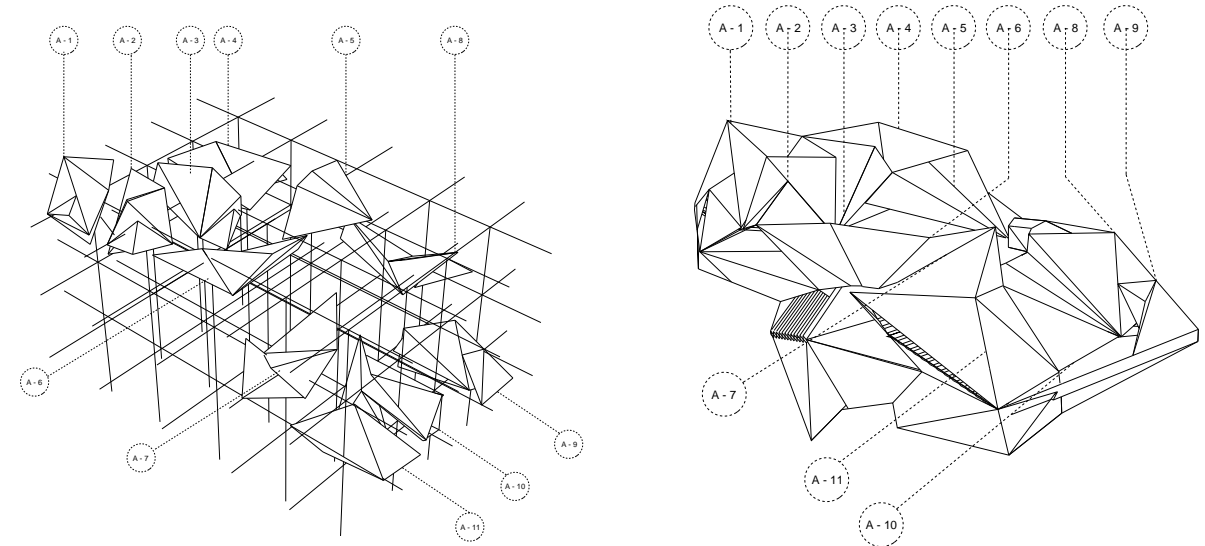
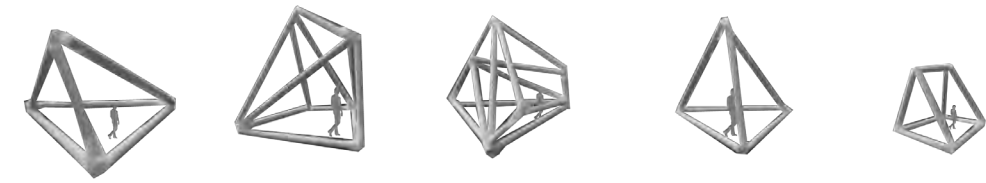
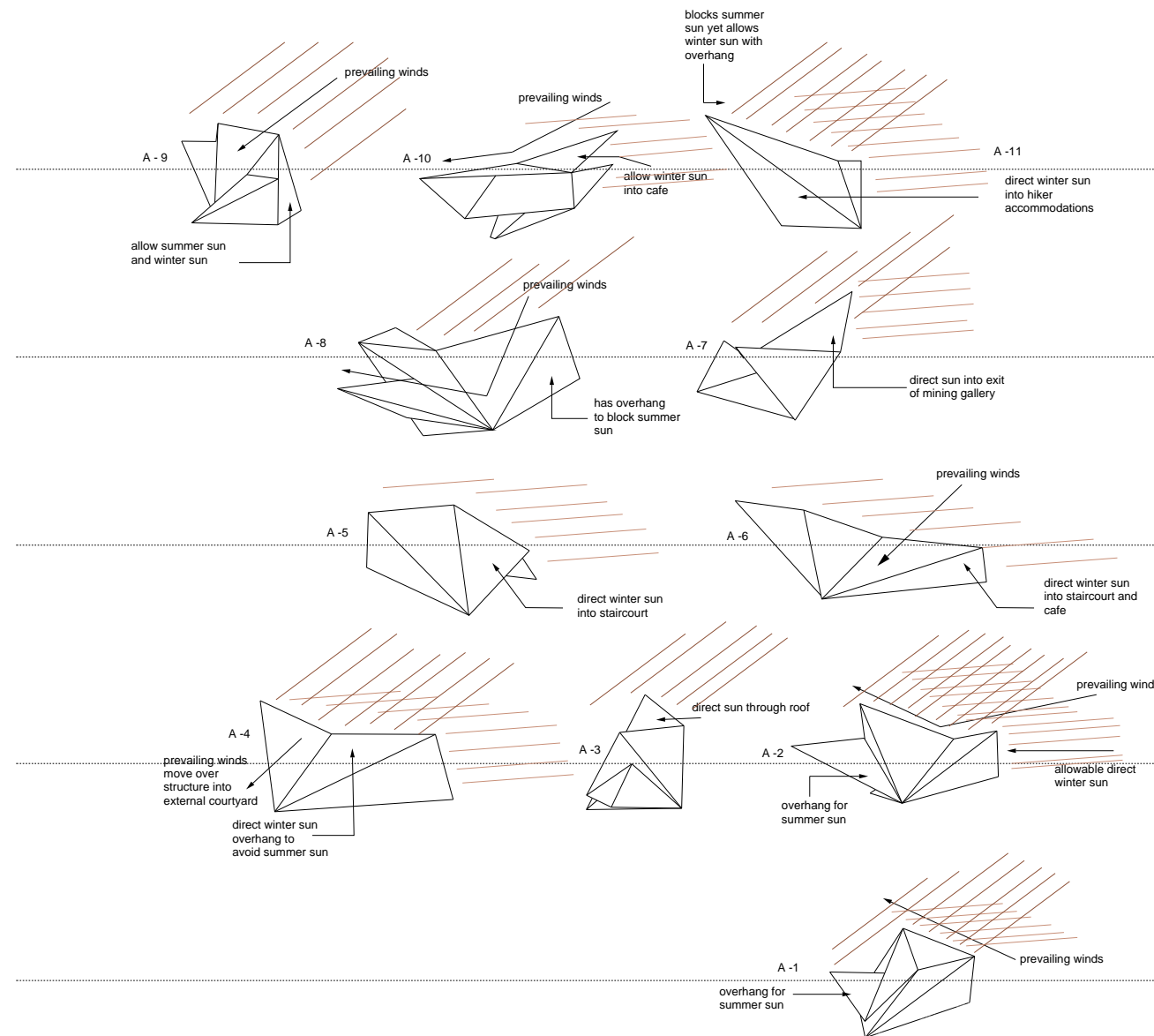


## EXCAVATE

WINTER 2021

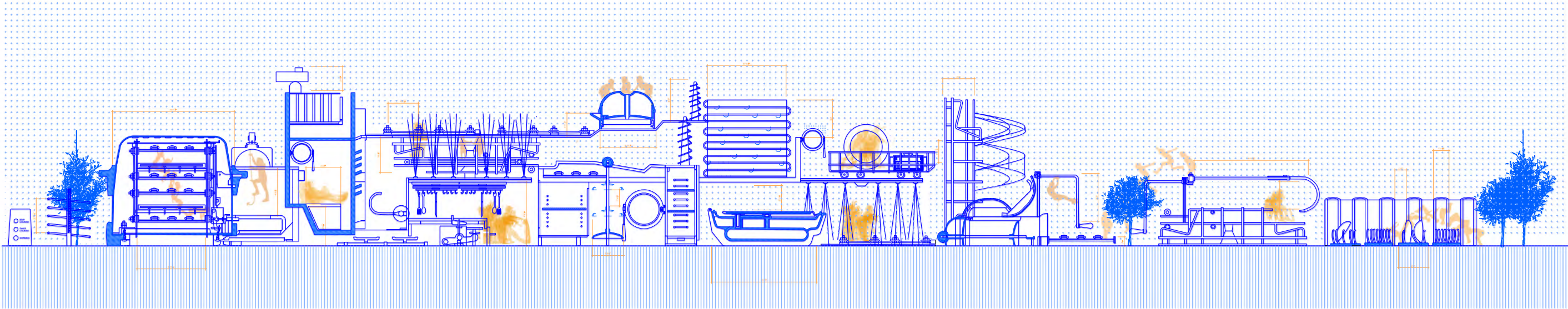
LOCATED IN AJO, ARIZONA THE NEW CORNELIA MINE WAS THE SITE LOCATION FOR THE FINAL CLIMATE RESPONSIVE DESIGN PROJECT. BEING AN ABANDONED OPEN MINE PIT FOR MANY YEARS, THE OBJECTIVE OF BUILDING A MINE RESTORATION CENTER WAS TO ENHANCE THE EXISTING SITE AD REJUVENATE, REACTIVATE, AND REINTRODUCE THE COMMUNITY TO THE SITE.



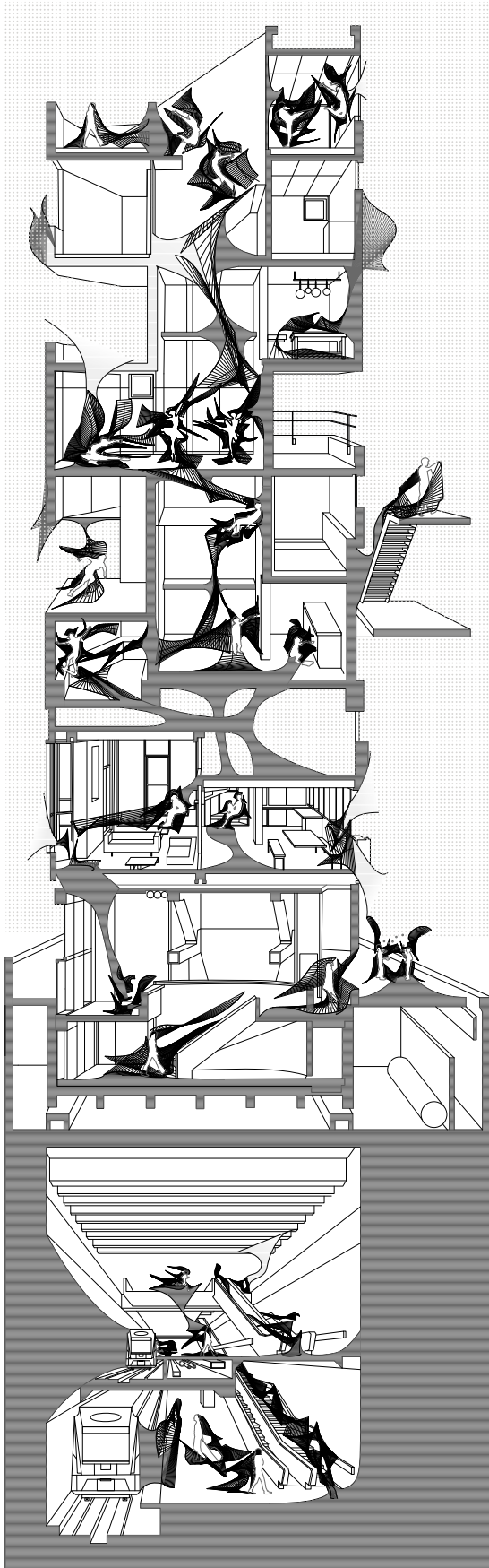


Project design based formed into a matrix of "mined copper" pertruding from the site surface. Each piece is deliberately placed and angled based on sun studies for optimal experience in the building.

5th Year Thesis Progress: Site Section



-FOOD FOR THOUGHT-  
PLEASE RUN IN THE KITCHEN !!!  
1/4 " = 1' 0"



## Dis-ordering Domestic Dimensions

Kitchen Ergonomics as Source Material for Urban Playgrounds

**Megan Rodi**

Advisor: Emily White

In domestic architecture, the kitchen is the most fundamental and efficient space. Measured for optimal ergonomic function, the dimensions of the kitchen are specific to its program. As a primary example of optimized space, the use and arrangement of its mechanical parts dictate order and sequence. This form of ergonomic precision can be utilized and facilitate how we move and are immersed in space.

Writer and architect Sarah Robinson analyzes how “our existence depends upon ourselves through the medium of our constructed habitat.” Robinson’s *Architecture is a Verb* argues that we are unaware of our “interdependence” with the environment because it operates as our extended body. This idea shows how historically the domestic kitchen is entrapped in both a cultural and spatial dimension, in need of disassembling its constructed habitat. According to Robinson, one thing does not overrule the other, instead, the body and built environment work in harmony to establish operations, habits, and character of both the human and the built environment.

This discussion of reconfiguring space into place is what Pablo Sendra and Richard Sennett describe in *Designing Disorder*. “Urban design interventions could enable the kinds of disorder that allow for unplanned activities and provide an open-ended urban configuration that can change according to people’s actions.” Sendra and Sennett’s approach takes an architectural organization of imposed systems and gives it alternative meaning in public space, challenging its existing form. In this way an architectural machine can be dismantled from the “inside out”, transforming specific dimensions for non-specific uses.

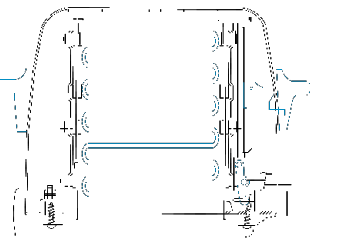
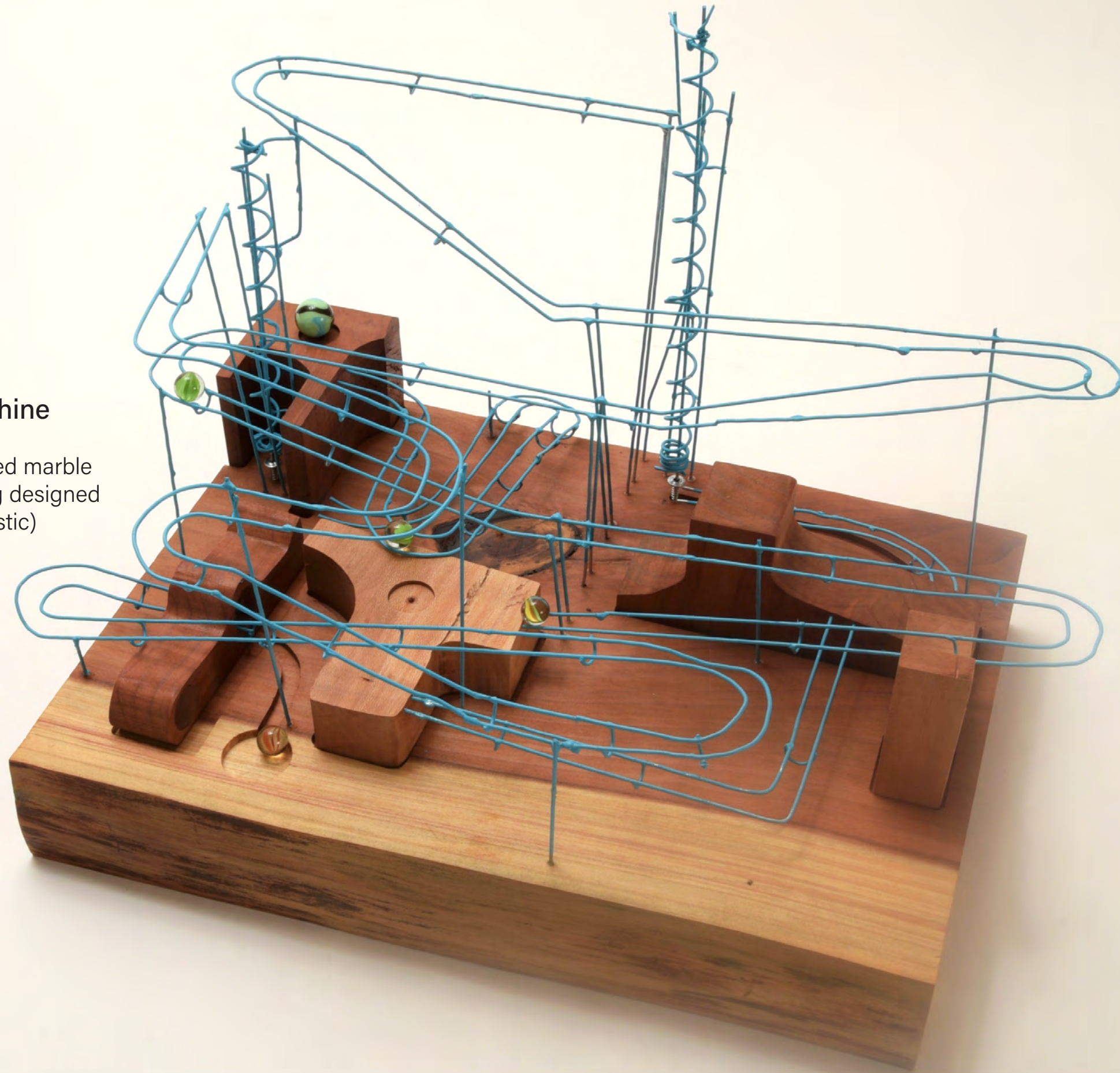
The kitchen is source material for the urban playground. By changing the what, where, and how of its materialization, kitchen appliances and their dimensions are reconfigured to become playground structures, forming new ergonomic relationships. This project envisions a design that disrupts a fixed site and recontextualizes kitchen efficiency in the urban scope. In the playground, sequential movement is transformed through non-sequential arrangements of kitchen parts. In this way, it initiates spontaneity.

As an architectural melting pot of imagination, playground design resituates our relationship with the kitchen by physically reconstructing it, revealing itself through participation, protest, and play. Within the built environment its design creates “the space between” the public and private dimensions, revealing new architectural intentions. It creates an alternative expectation through the messiness of human activity and material conditions. The ergonomic precision of the architectural machine, the domestic kitchen, takes on a new meaning of bodily interaction when re-contextualized in urban space. Through a dis-ordering of fixed dimensions this project envisions urban play as a counter form of the kitchen, as users design and absorb disorder. By engaging play as a verb, an alternative imagination disrupts the dimensions of the kitchen’s hierarchical domestic routine, creating an ergonomic jungle gym for the chefs of the public plate. Through this, disorder reveals more human interaction as kitchen ergonomics and dimensions transpose to a system that is “light and fun”, but completely absorbing.

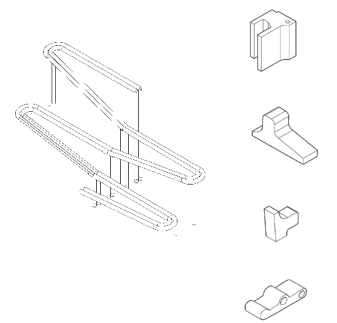


## mAR(CH)ble machine

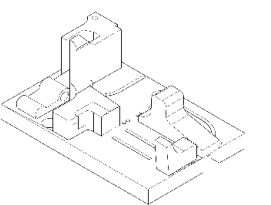
Rube Goldberg inspired marble machine, representing designed disorder of the (domestic) toaster oven.



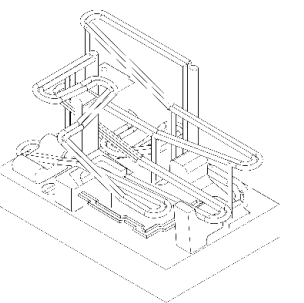
domestic



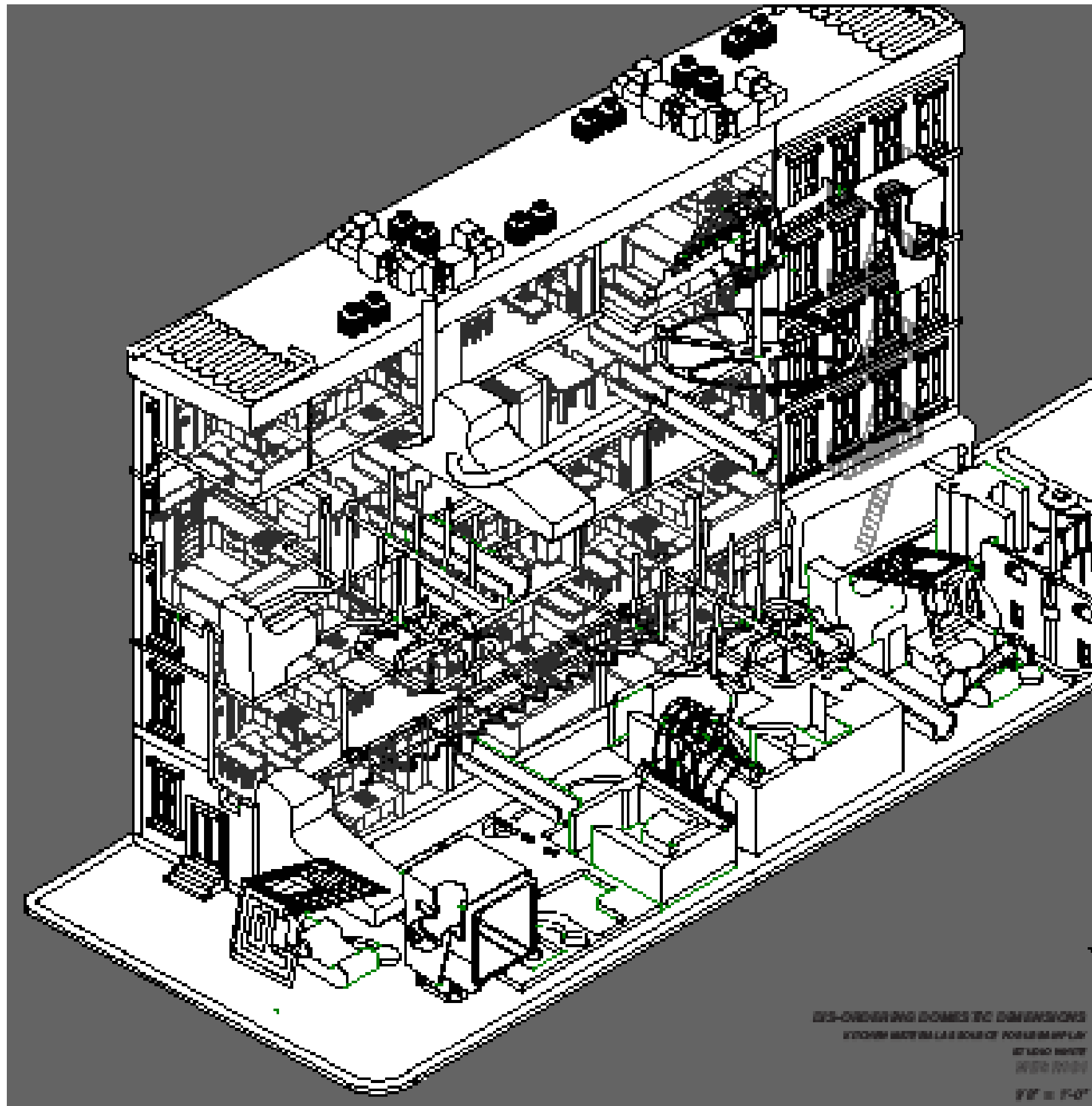
dis-assemble  
and distort



dis-order



disrupt



DIS-ORDERING DOMESTIC DIMENSIONS

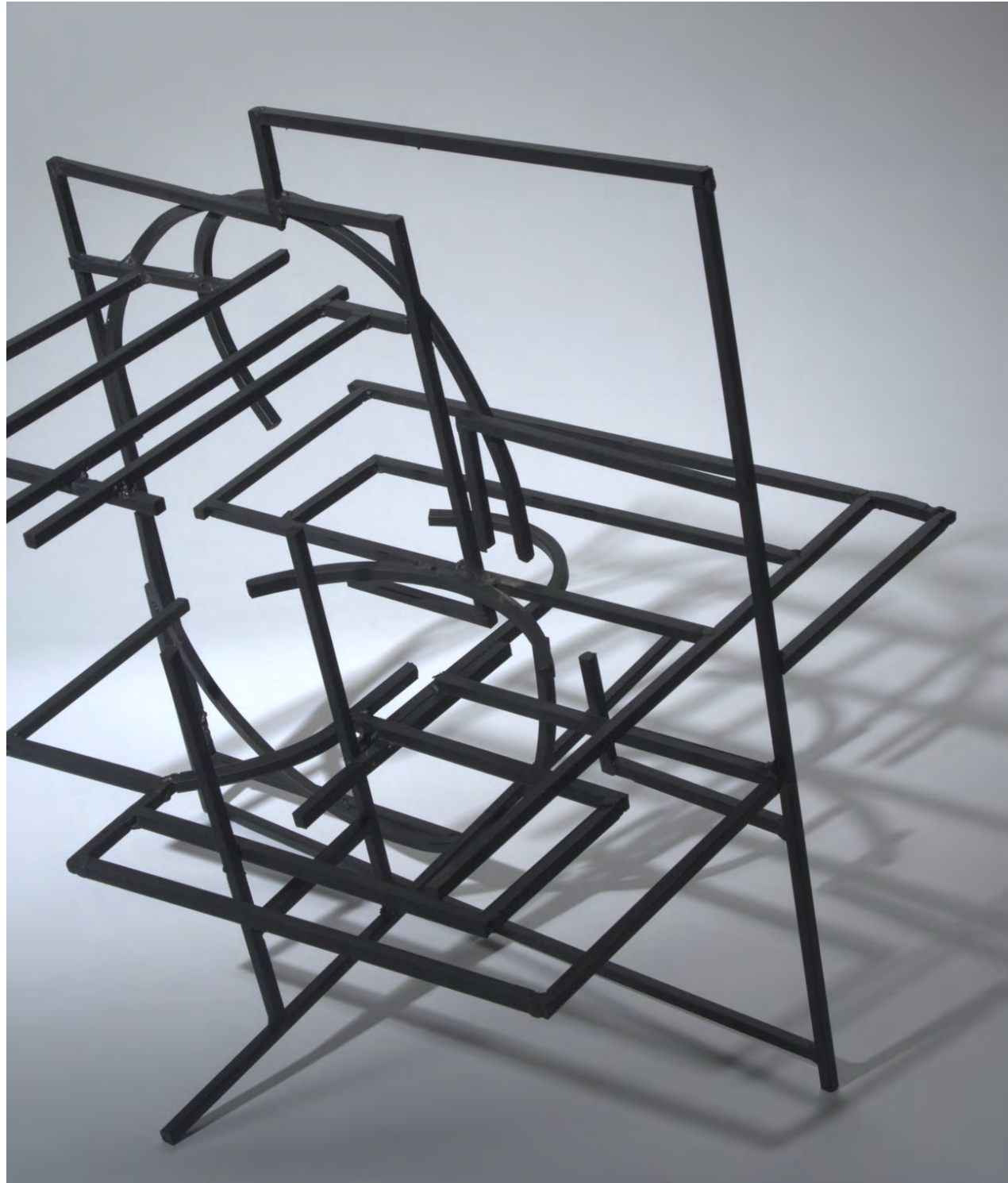
STITCHED MATERIALS AS SOURCE OF FORMAL PLAY

STUDIO MAYER

1981, 1981

1/2" = 1'-0"





Study model based on ergonomic dimensions