

CARSON OLIVER



# PORTFOLIO

2019-2024



Carson Oliver

Currently a fourth year B. Arch. Student at the Rensselaer School of Architecture. Interests in the cultural nexus between the urban, the civic and the built at a multitude of scales driving an exploration between self, community and environment.

This portfolio contains the work of Carson Oliver

Carson Oliver  
Portfolio © 2024

Student  
Rensselaer School of Architecture  
Troy, NY 12180

Address:  
240 11th Street,  
Troy NY, 12180

olivec2@rpi.edu  
831-275-8793

# Contents

<b>01</b>	<i>Civic (invitation) Center</i>	4-15
<b>02</b>	<i>Executor</i>	16-25
<b>03</b>	<i>Intersect, Infiltrate</i>	26-37
<b>04</b>	<i>Pod Hotel Analysis</i>	40-41
<b>05</b>	<i>La Borda Case Study</i>	42-47
<b>06</b>	<i>Consumption</i>	48-49
<b>07</b>	<i>Container Pendant</i>	50-53

# 01

## *CIVIC (invitation) CENTER*

Rome, Italy

Collaborators: Olivia Rougé

Critic: Matthew Lopez

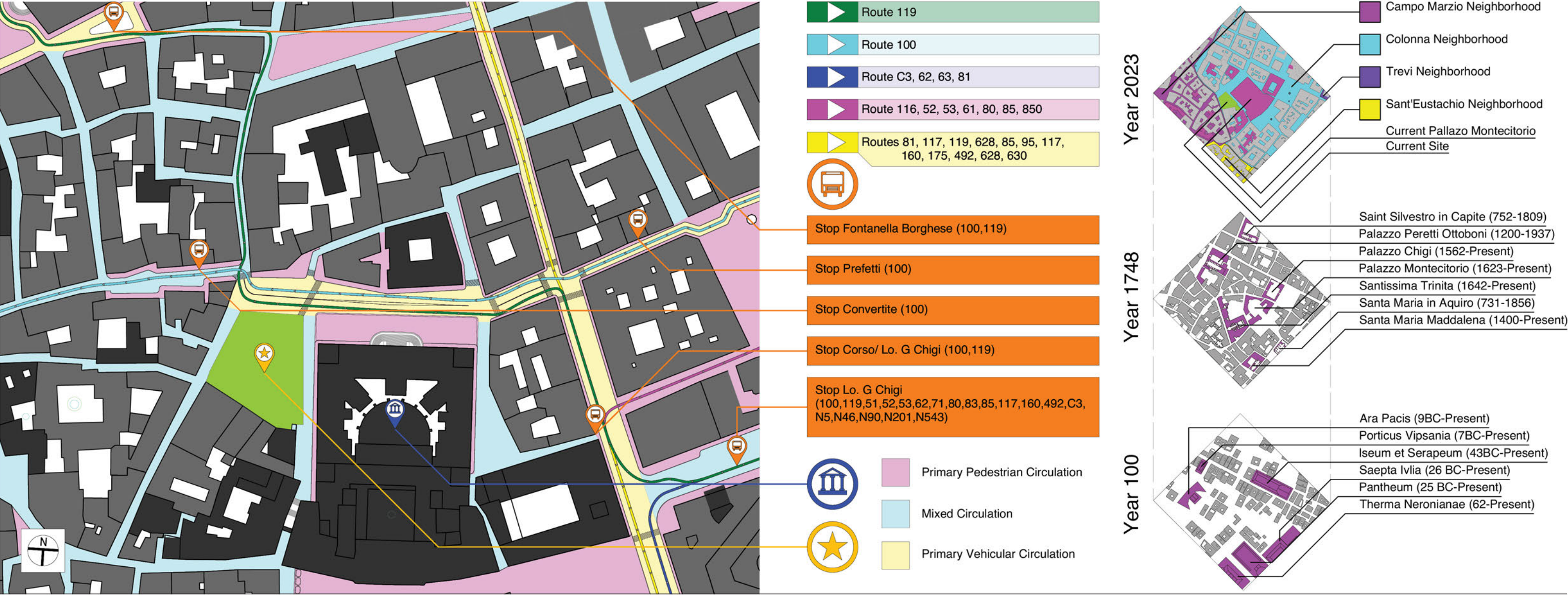
As observed, the narrative of built space in Rome can have a very private perception, both in a physical and civic context. The courtyard offers an interior haven, closed off from the outside world. This project serves to shift this narrative and open the closed door event. Through a series of civic and geometric moves, the courtyard becomes a celebrated invitational space to the surrounding context of Rome.

The building is organized into a three-coil spiral, with one corner lifted. This lifted corner allows for transparency into the courtyard and creates a proudly beckoning threshold condition. Through this drastic exposure of the inner courtyard, the exterior space is activated, drawing the passerby into the intimacy of the core courtyard object. This reveals an event space exposed to the outside functioning as a place of refuge for the public, as well as the potential for performative events.





Site Analysis

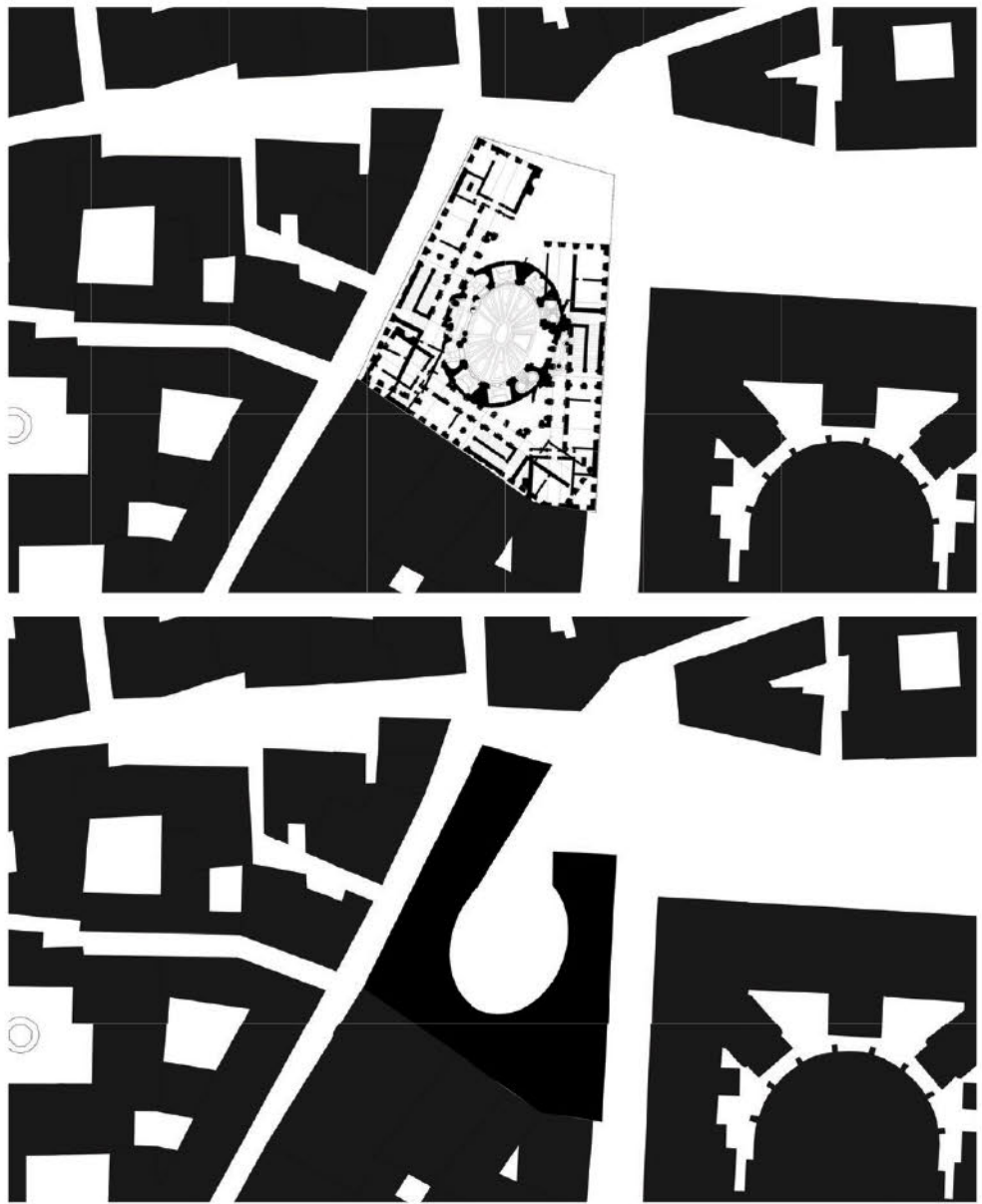


Facade Analysis

TOP OF PARAPET - 135'



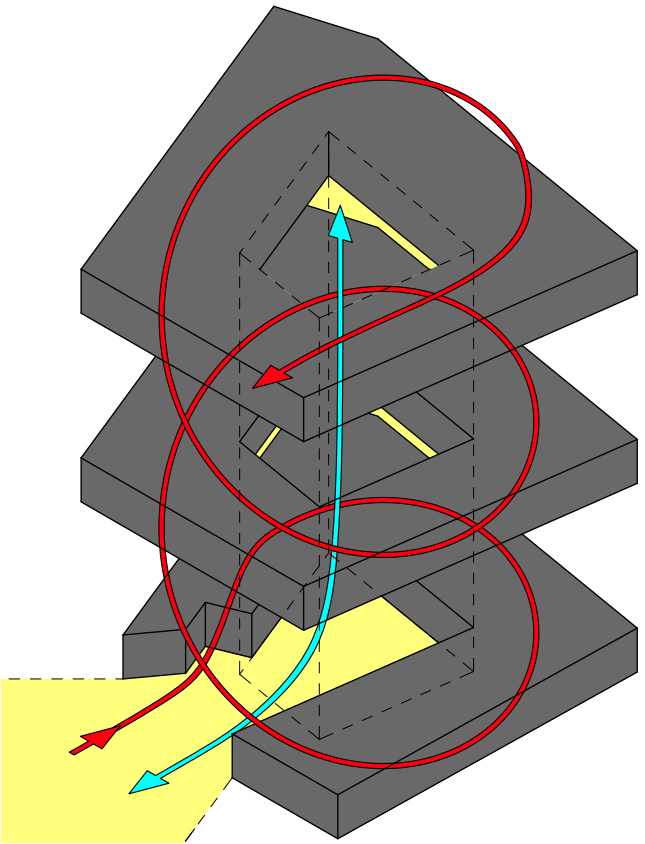




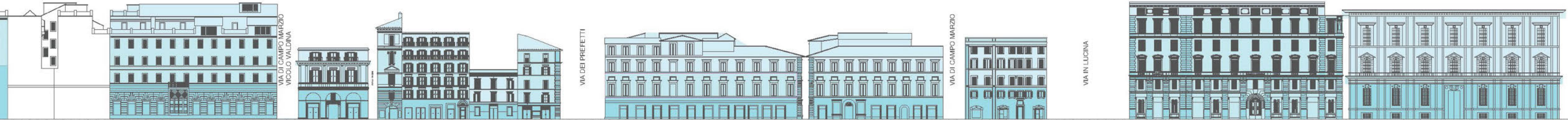
Plan Collage Study

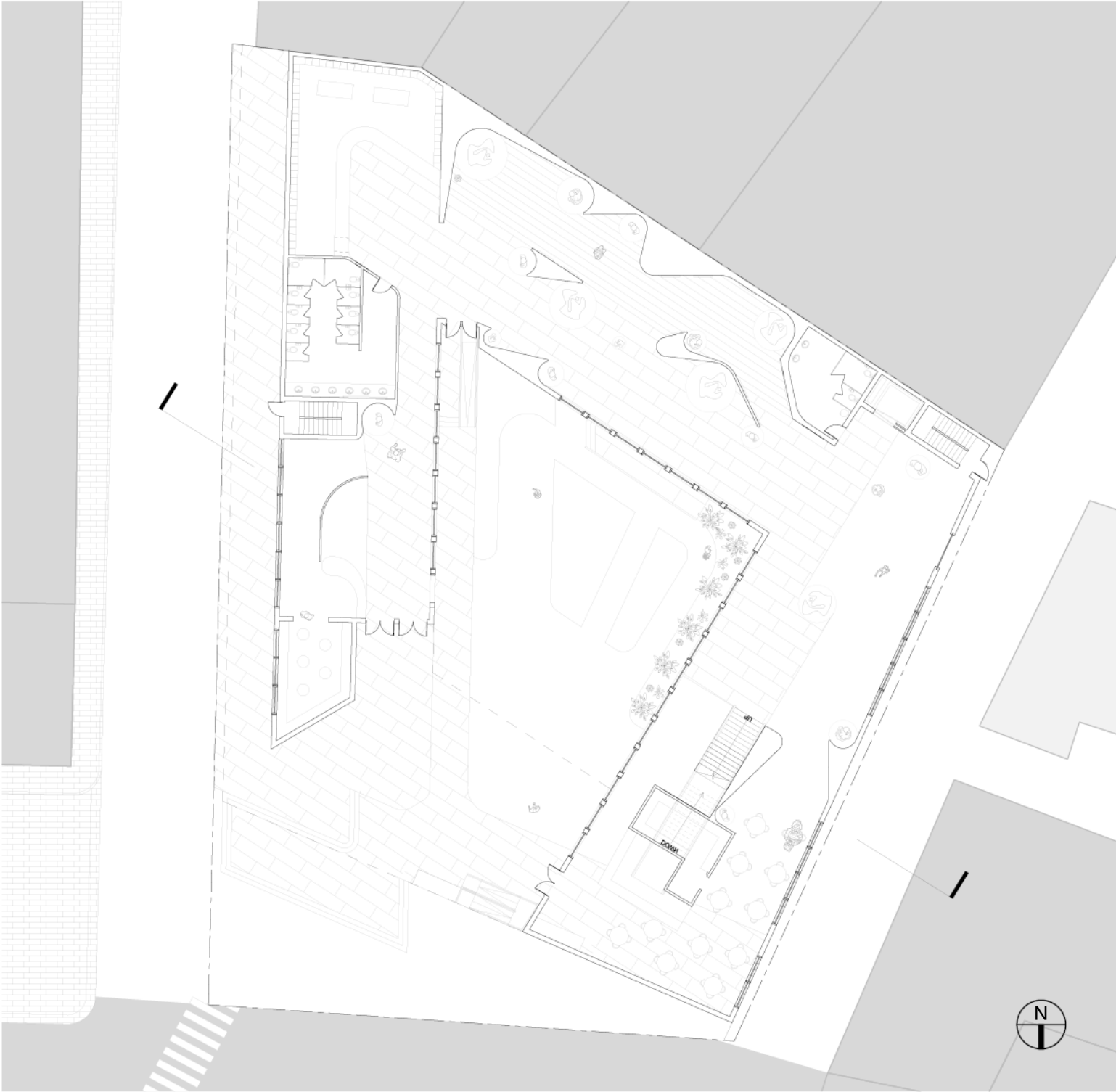
Plan Massing Study

The parti consists of a spiral, wrapping around the central courtyard and folding open at ground level. As the mass moves upward, the courtyard is fully enclosed. This helps to deliver both an interior identity, and an externally oriented attitude.



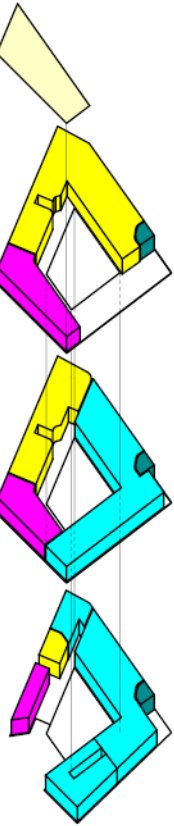
Parti Concept





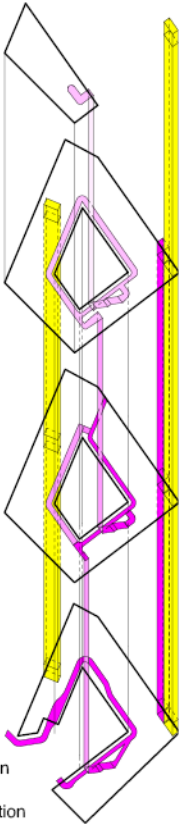
Ground Floor Plan

- Terrace
- Government
- Communal
- Exhibition
- Bathroom

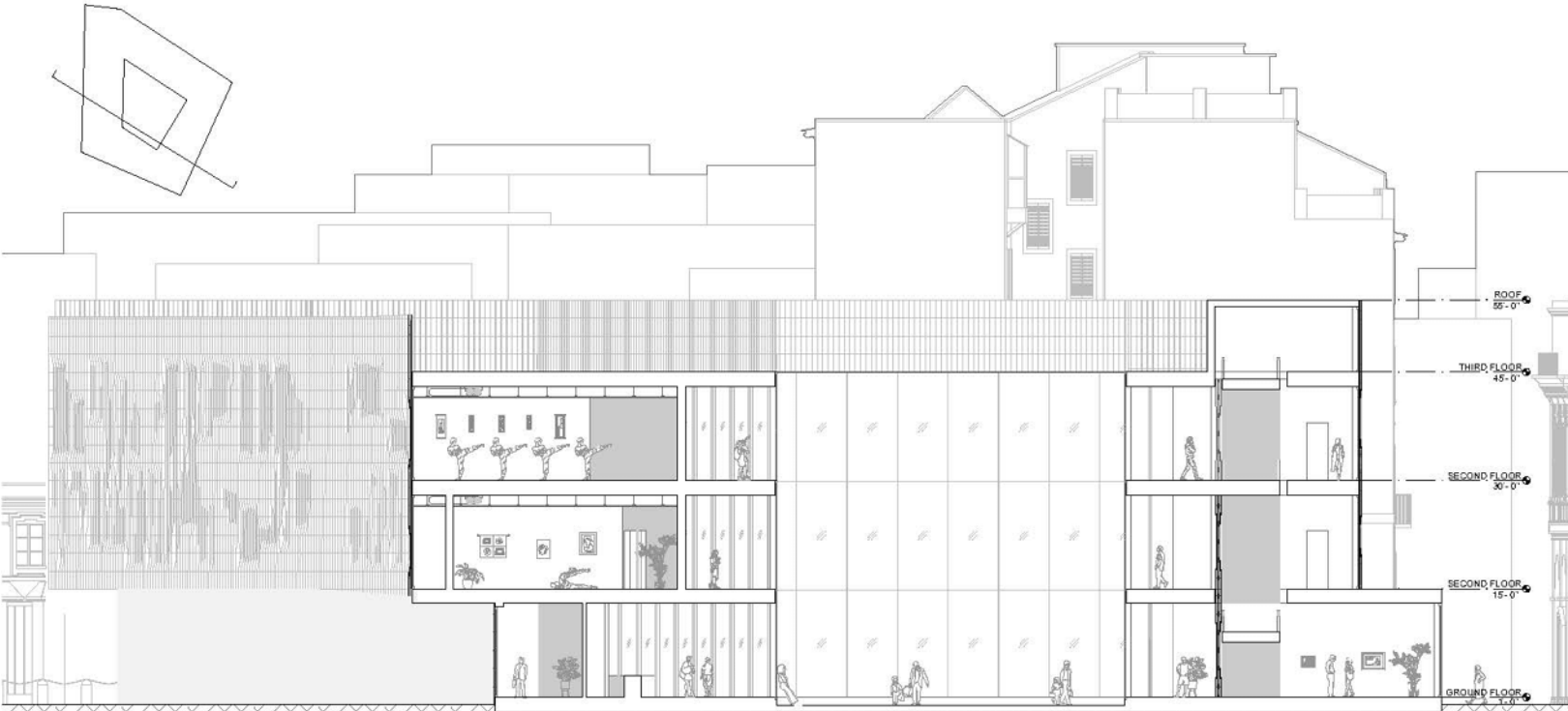


Program Distribution

- Egress
- Main Circulation
- Private Circulation



Circulation



Section

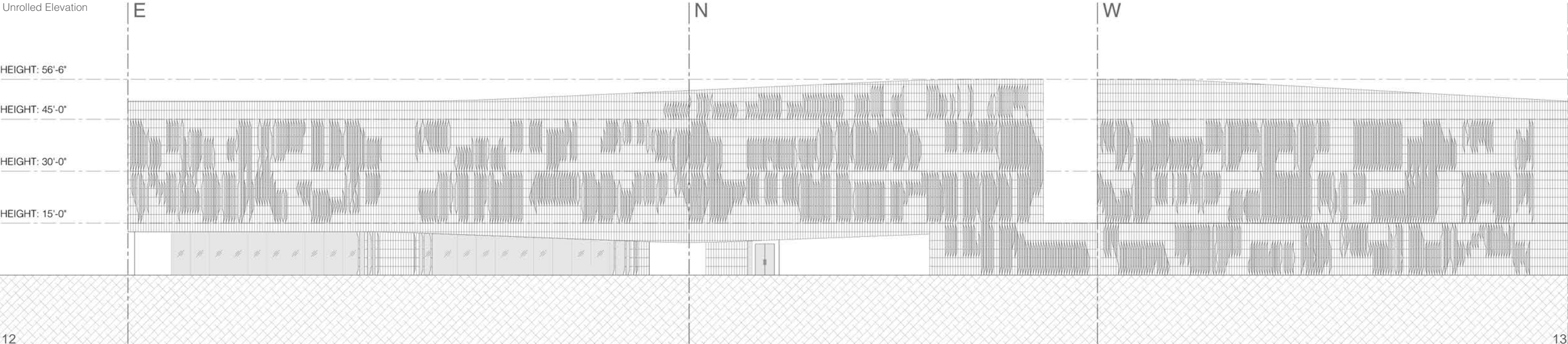




Facade View Under Entrance



Facade View From Street Corner







Street View



# 02

## EXECUTOR

Catskill, New York

Individual Work

Critic: Jillian Crandall

Located on the Thomas Cole National Historic Site, Executor is a proposed auxiliary building containing archaeological, gallery and communal exhibition spaces. As an integration with the mission of the Thomas Cole curators and staff, Executor seeks to acknowledge, celebrate and critically engage in the work of Thomas Cole and the underrepresented histories of the region and its indigenous communities.

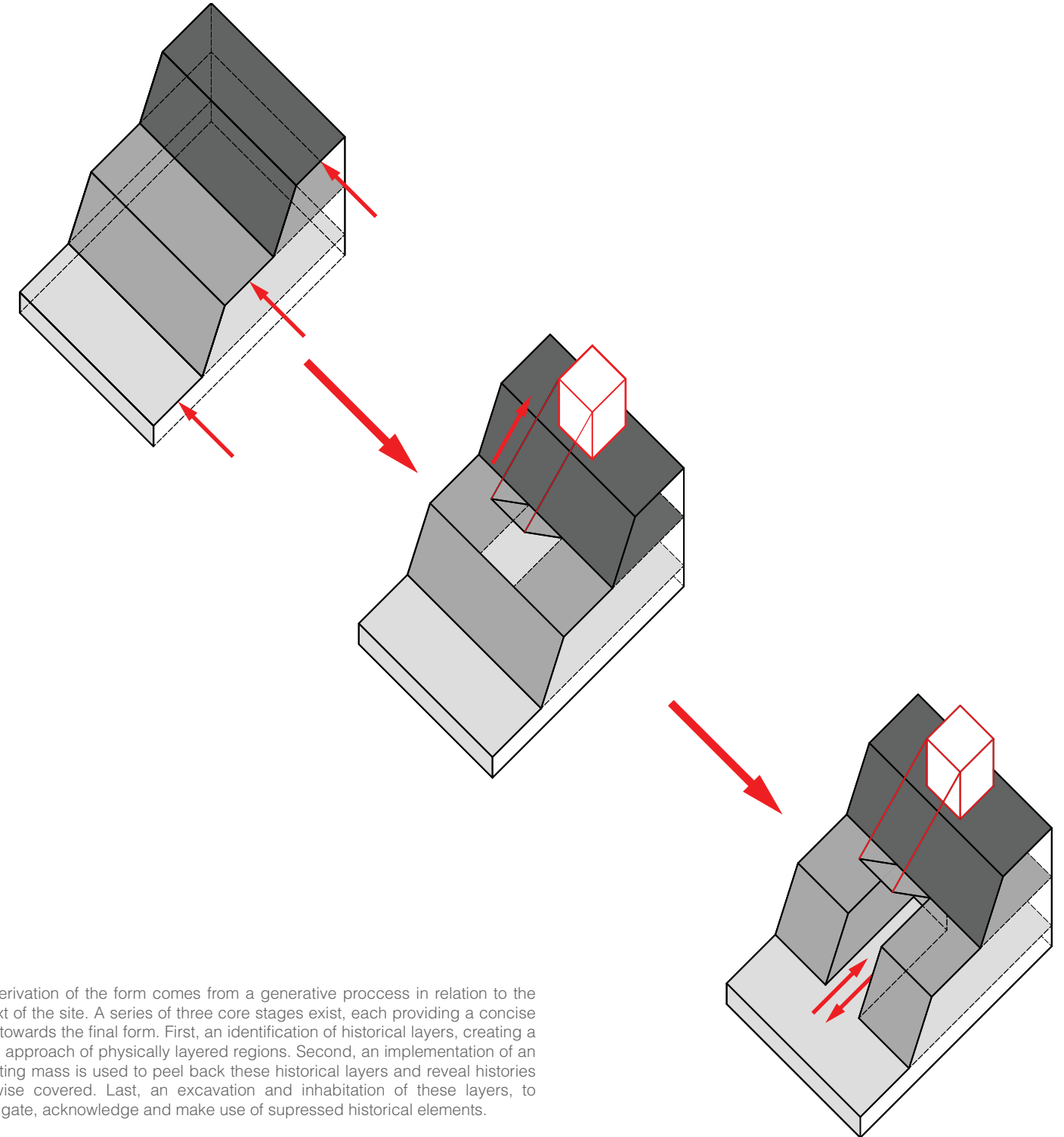
Historical analysis of the site and its preceding populations was conducted in order to inform both the form and the architectural approach of the project.







Collage Study of the Thomas Cole Site



The derivation of the form comes from a generative process in relation to the context of the site. A series of three core stages exist, each providing a concise move towards the final form. First, an identification of historical layers, creating a formal approach of physically layered regions. Second, an implementation of an executing mass is used to peel back these historical layers and reveal histories otherwise covered. Last, an excavation and inhabitation of these layers, to investigate, acknowledge and make use of suppressed historical elements.

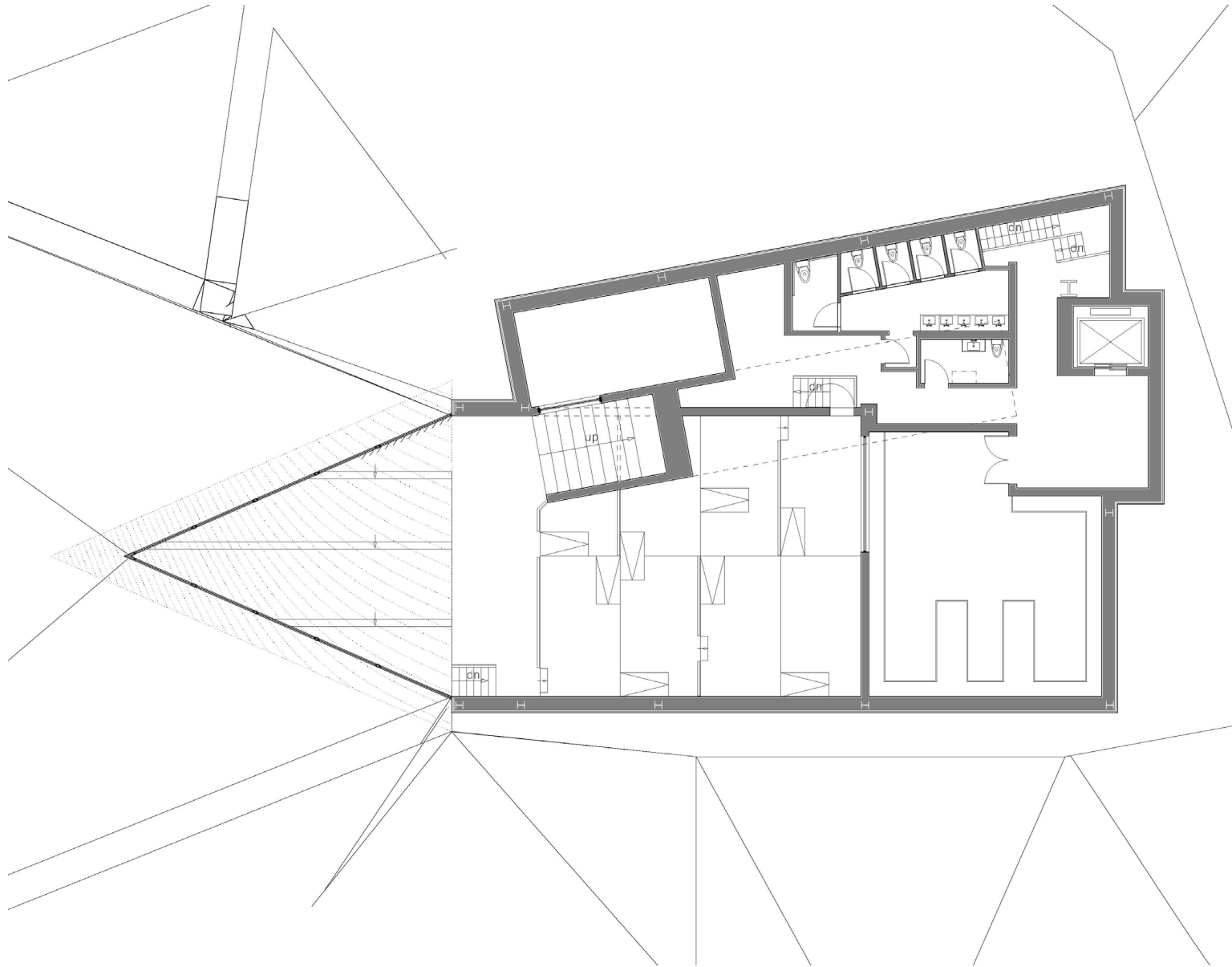
Parti Process





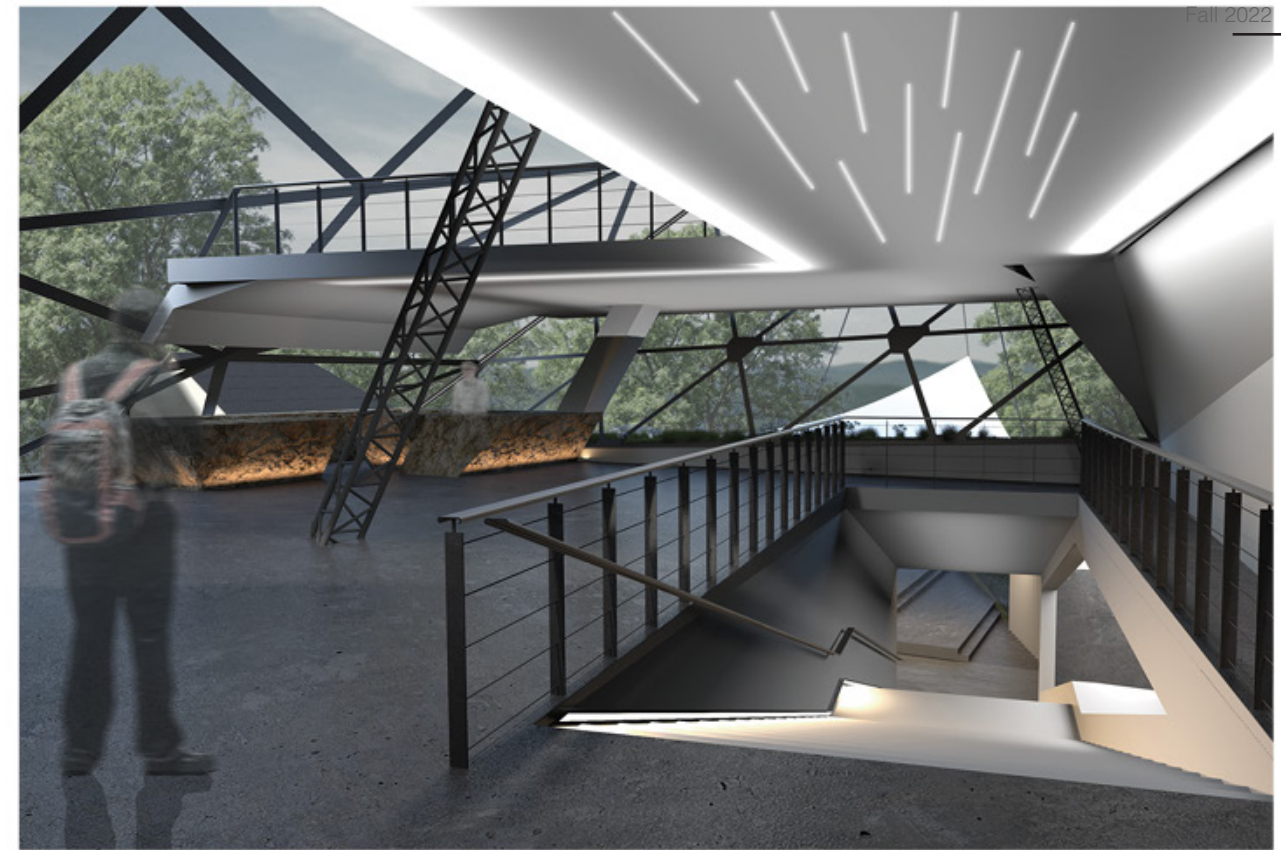
Garden View Perspective





Ground Floor Plan

The building is divided into four distinct zones, two located exposed, above grade level and two located embedded into the slope of the site. The top most area consists of a communal exhibition space. This level serves as the executing volume, lifting up the historical layers of the site and allowing for a contemporary reflection of suppressed histories. The lower volume consists of a gallery space, to reveal otherwise covered historical elements. Moving into the below grade space, a historical artifact exhibition space is located, followed by an archaeological research laboratory demonstrating the inhabitation of deeper histories.

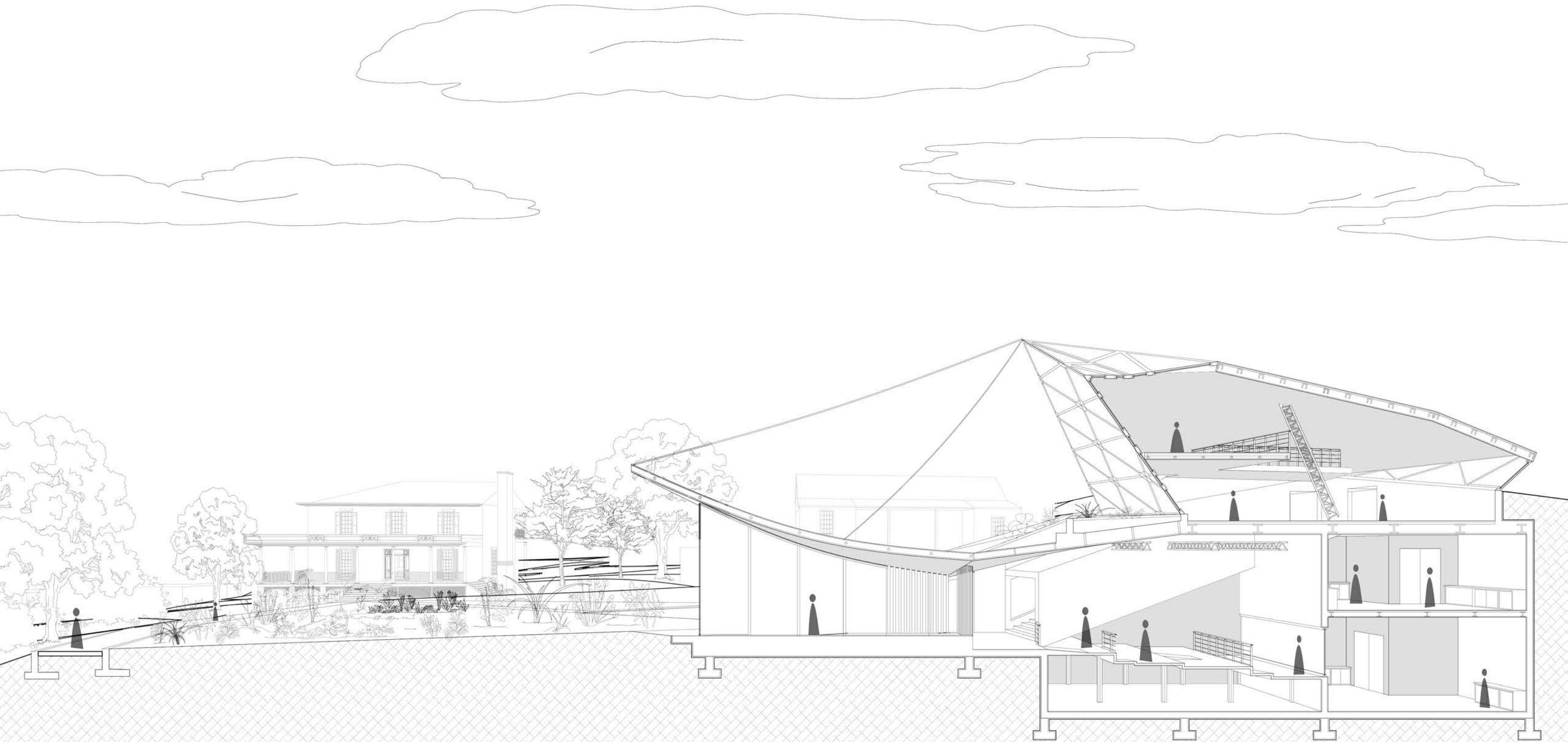


Interior Lobby View



Lower Gallery View







# 03

## INTERSECT, INFILTRATE

Troy, New York

Collaborators: Helly Rana

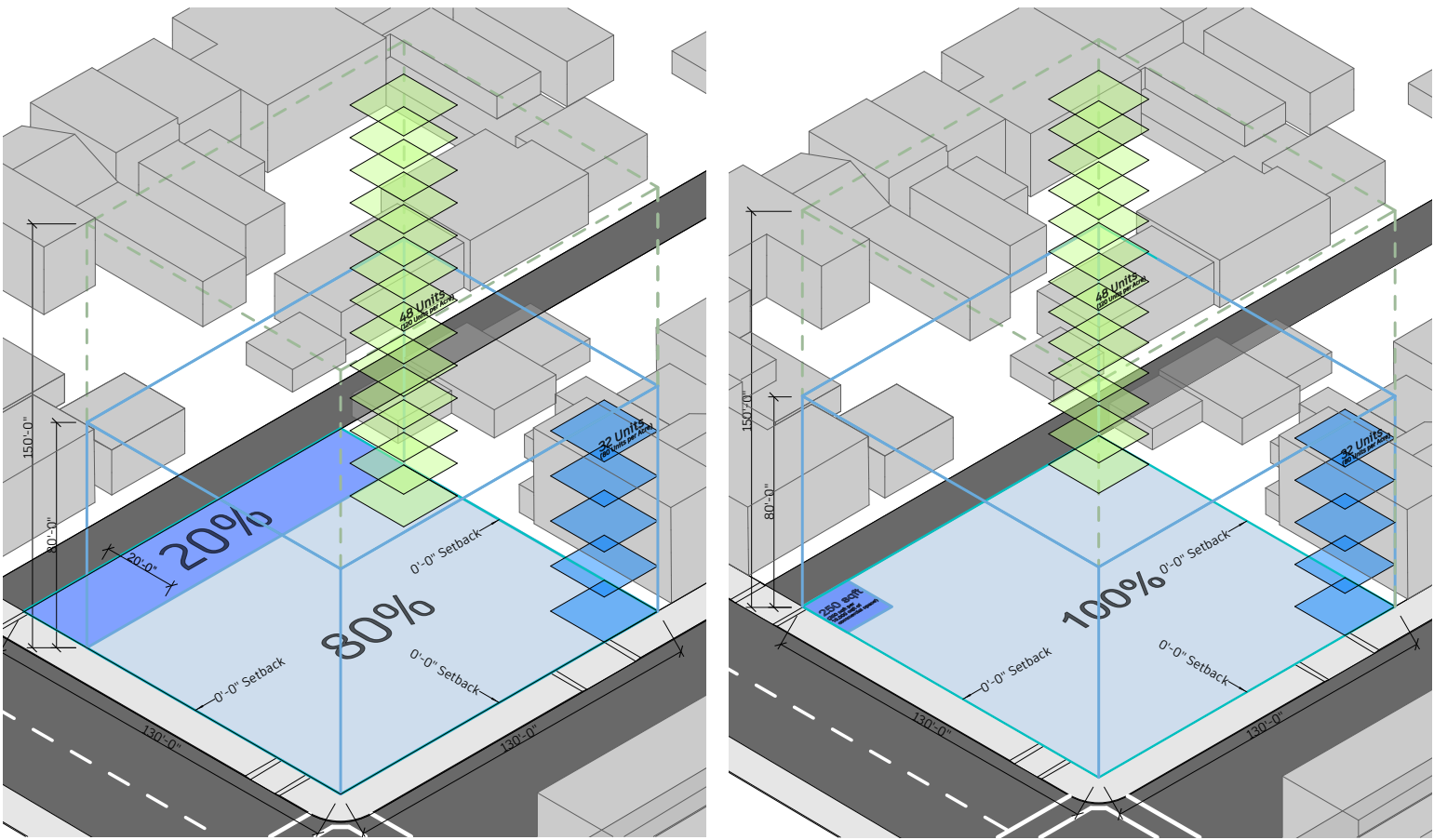
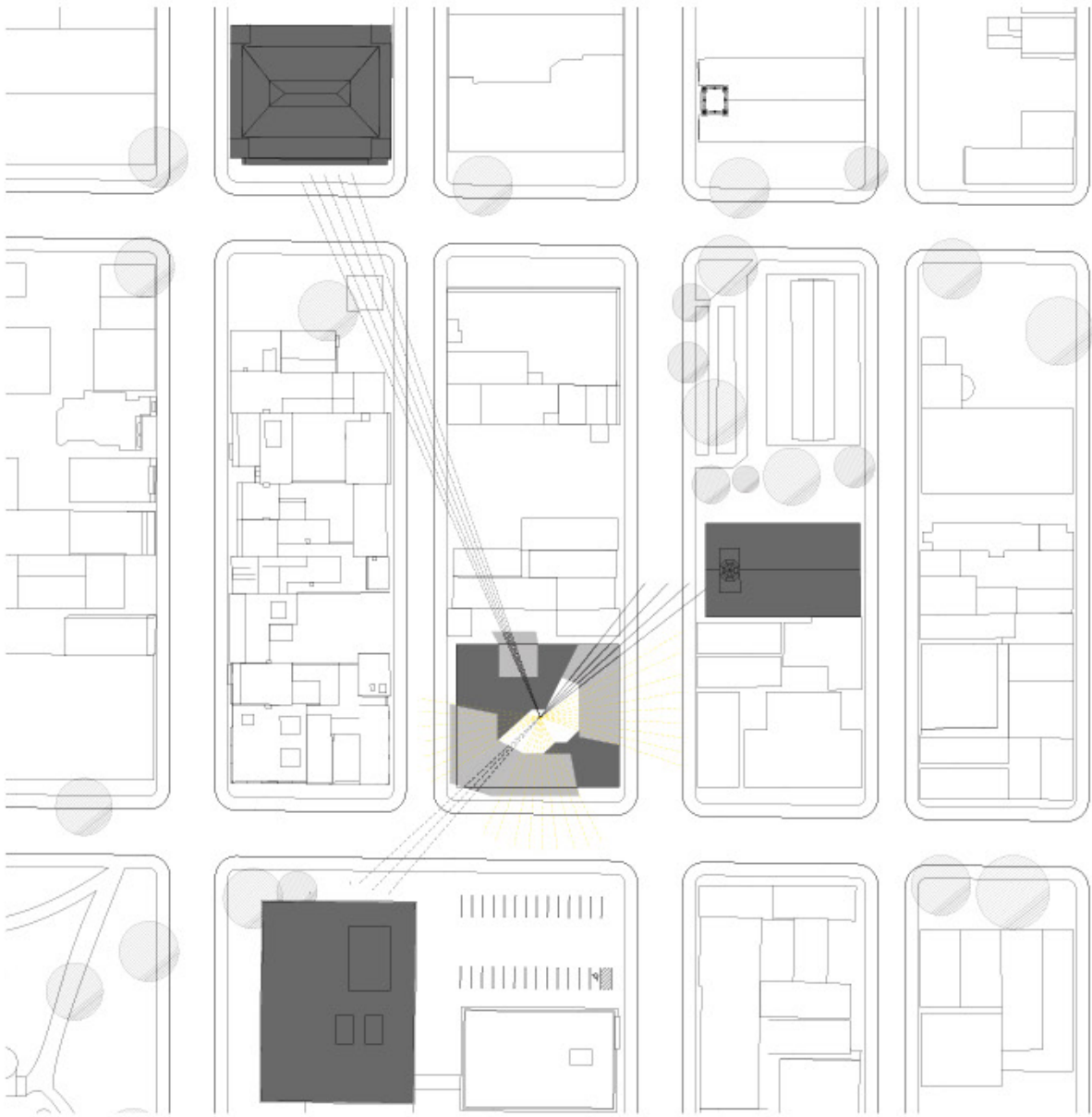
Critic: Yael Erel

Intersect, Infiltrate looks at a corner lot in Troy, New York, and proposes a 30 unit apartment building. The project observes the spatial relationship to several historical sites surrounding the location, as well as the solar exposure factors allowed for a site with three open sides. A invitation of these exterior elements into the interior of the space modularly integrates residential units with communal space.

The building negotiates between the modularity of the spatial organization, and the programmatic elements of the project. Through this relationship, they are able to establish a massing which consists of several interlocked volumes. These interlockings facilitate the true penetration of these exterior contexts into the core of the project.







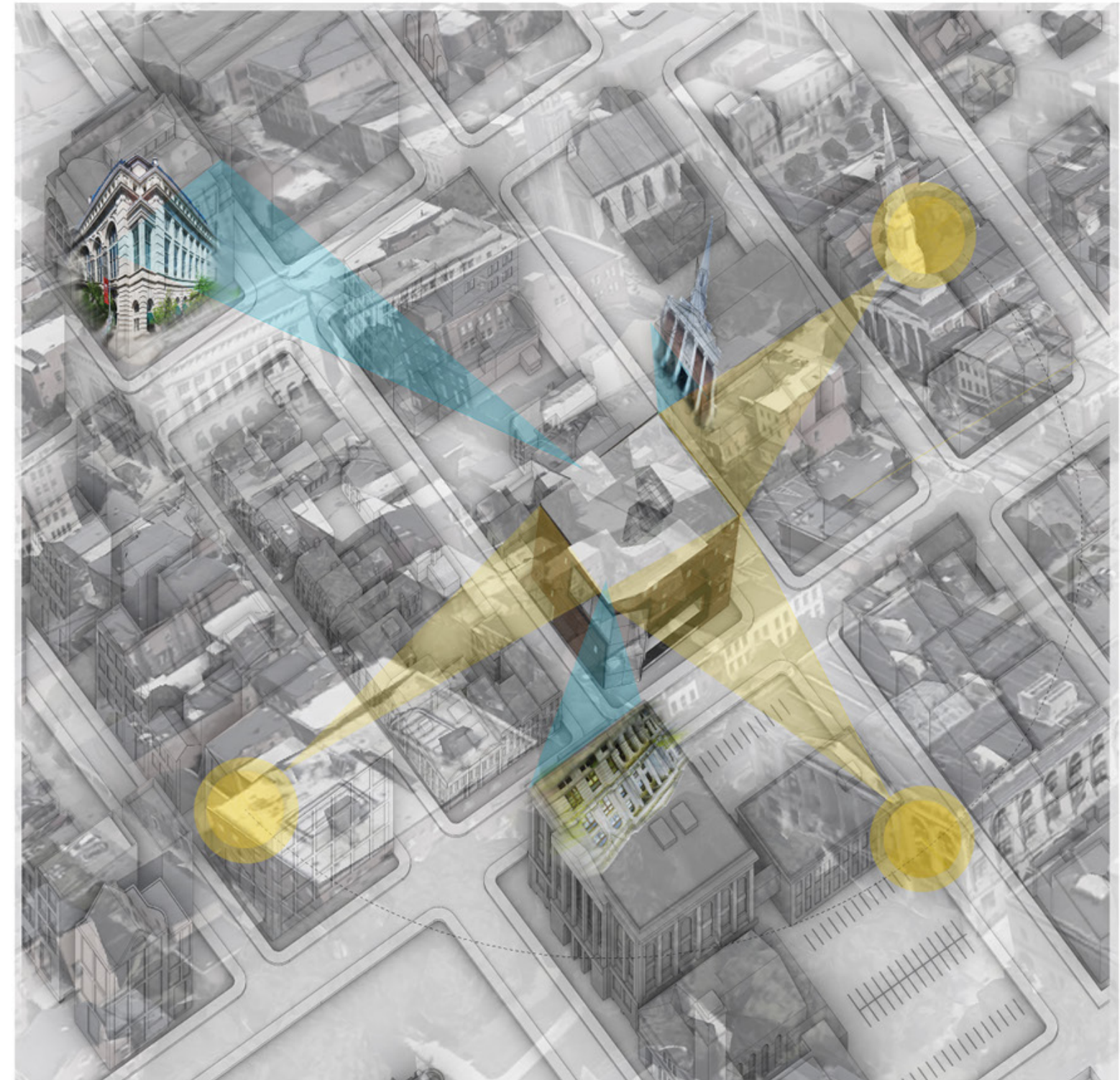
The project seeks to consider physical, civic, and contextual constraints. Zoning regulations, as well as the city building code were used to determine a compliant building footprint. These constraints were combined with contextual pressures of solar and site exposure to influence the final design.





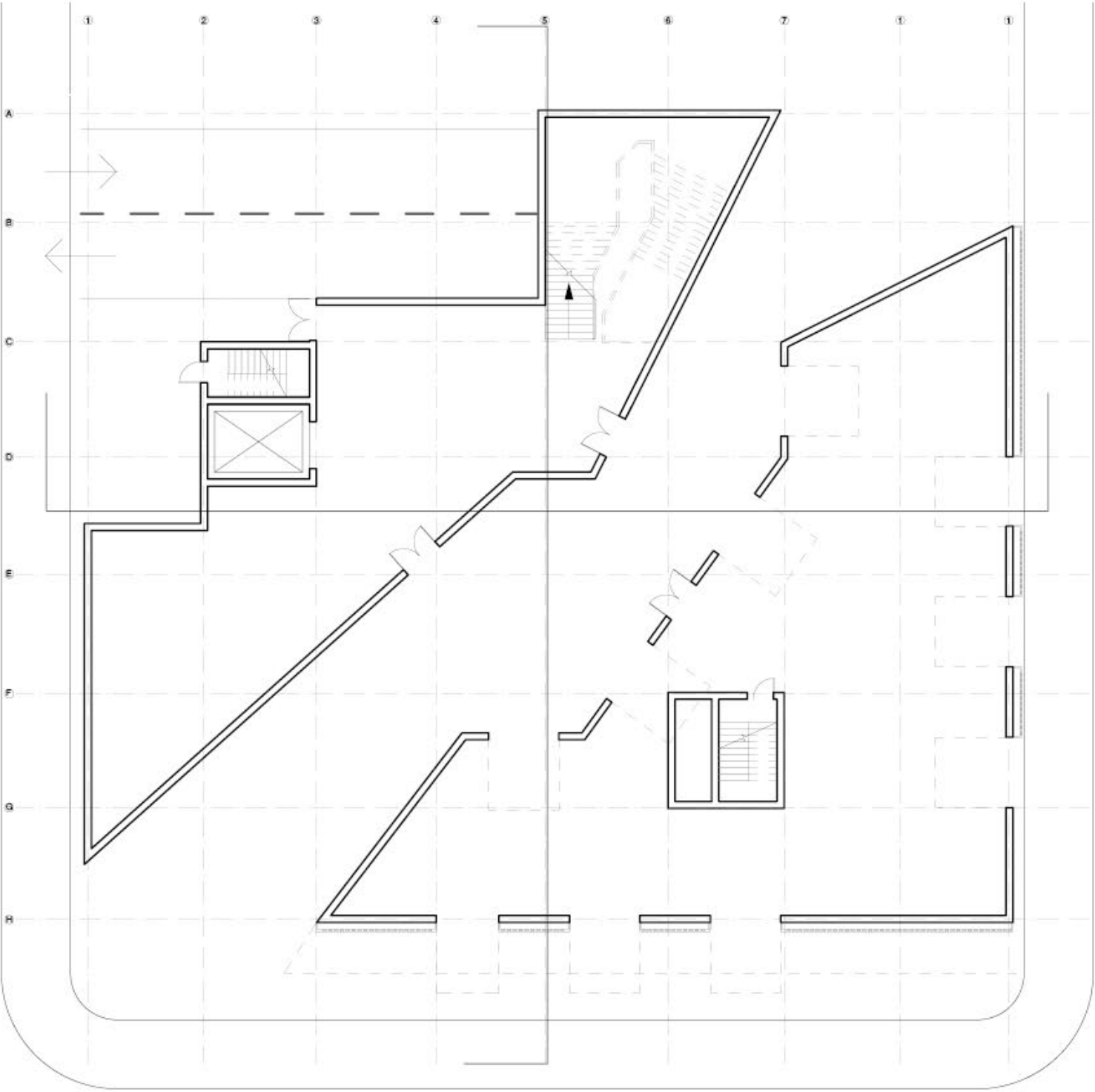
Site Plan

The mass is derived from the context of the site. Three openings exist to acknowledge three positions of the sun throughout the day, serving as communal spaces. One opening, and two street level openings into the interior courtyard acknowledge historical buildings around the site.

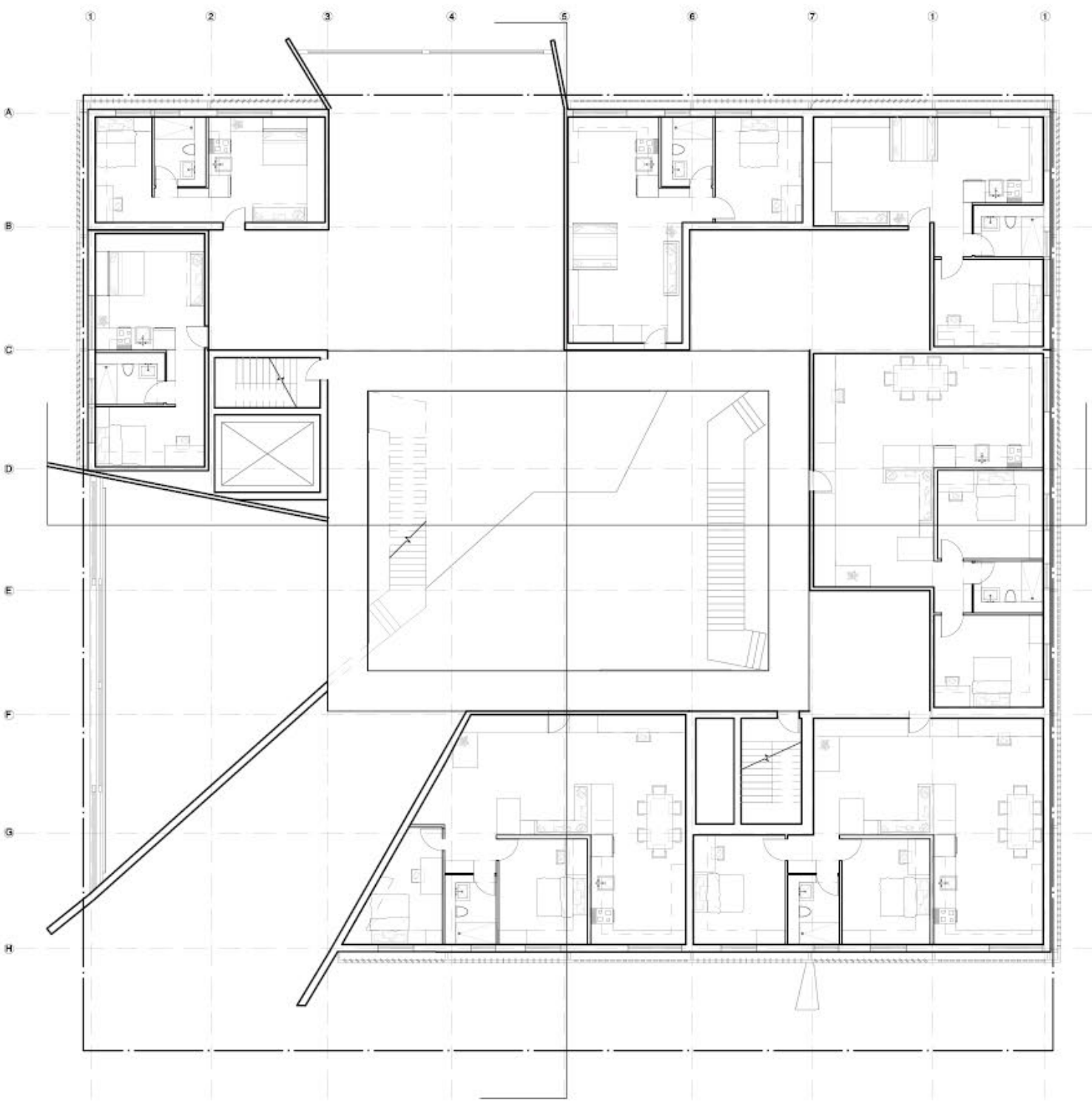


Orientation Studies



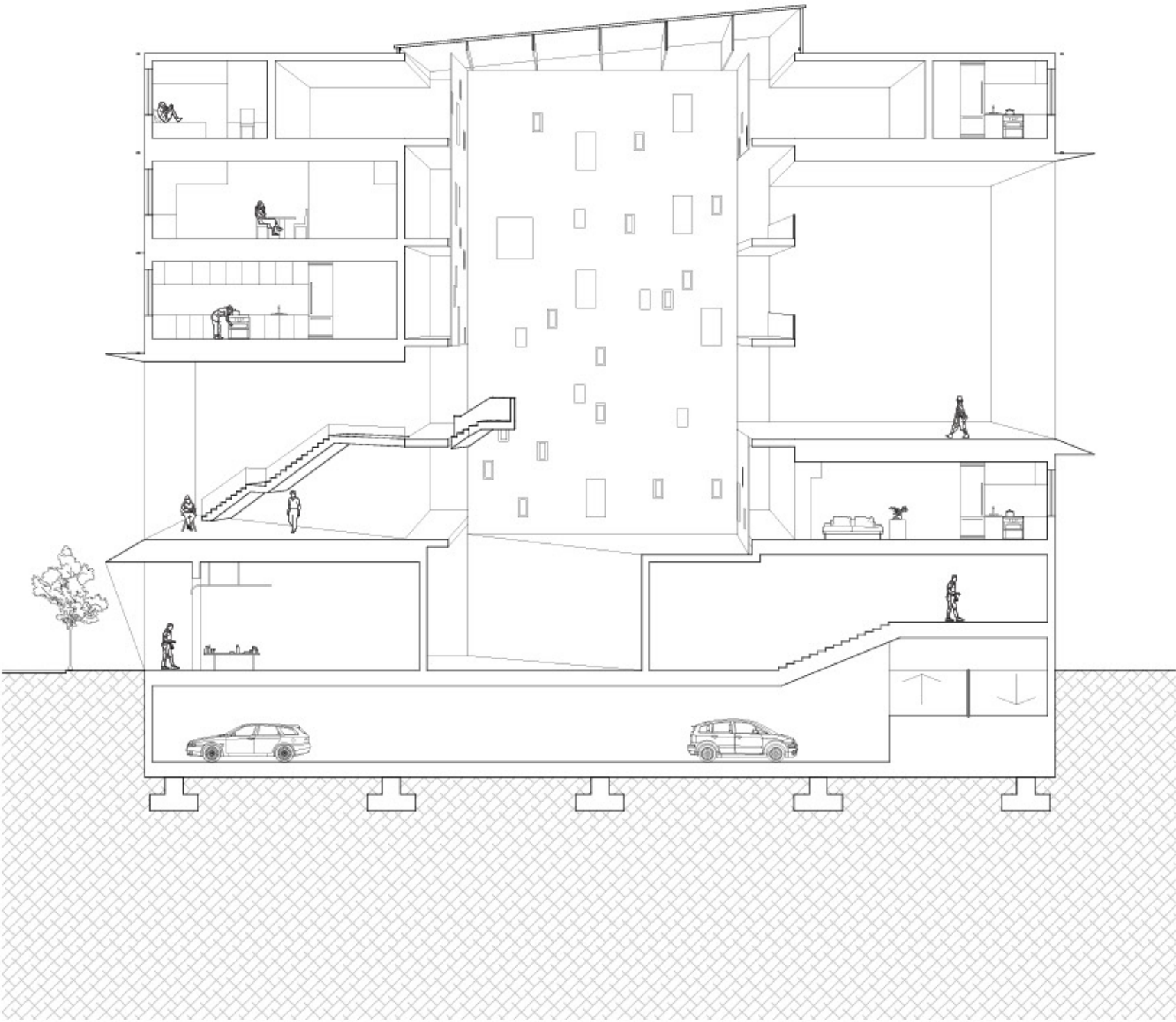


Ground Floor Plan



Third Floor Plan



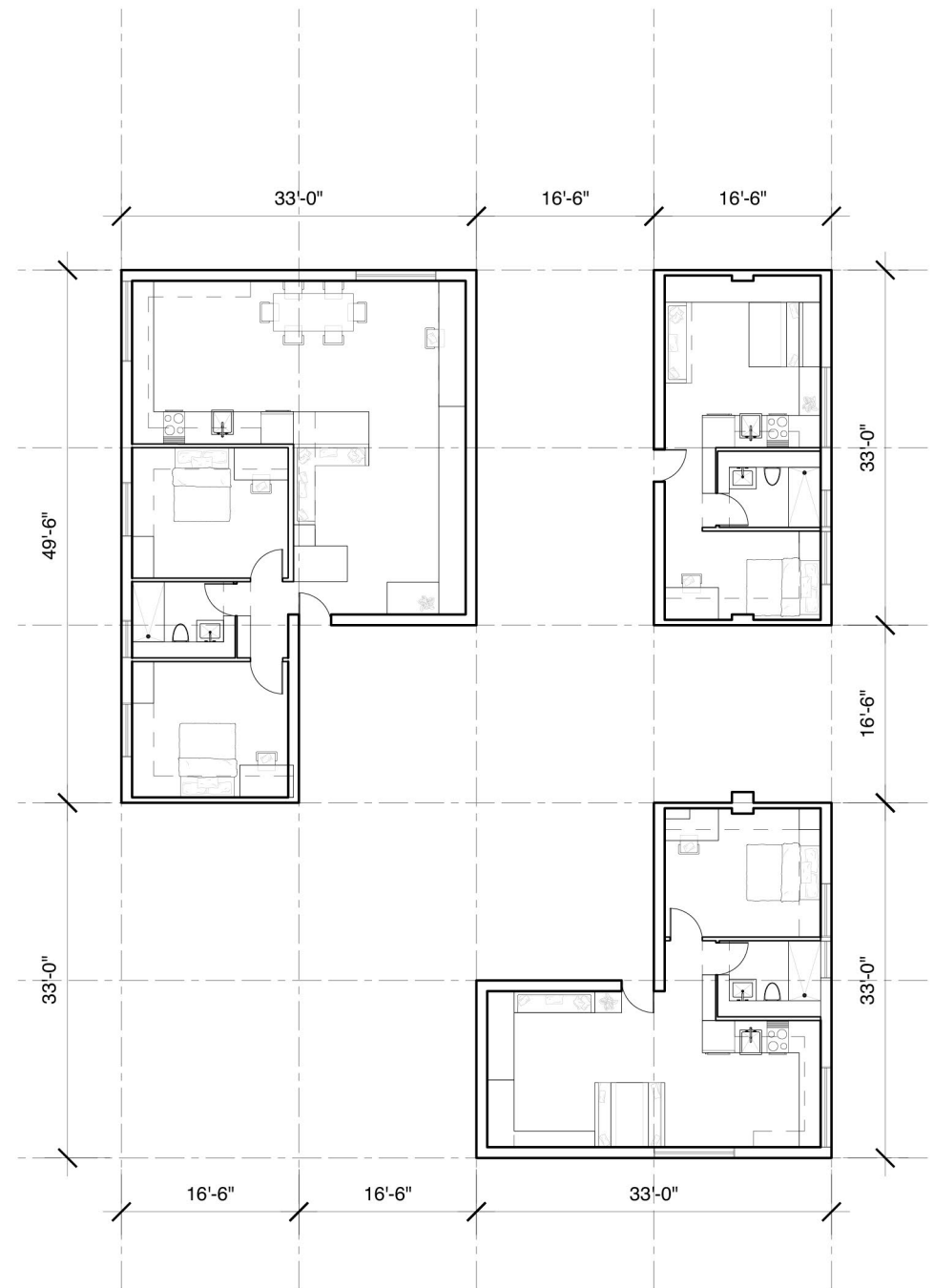


Section

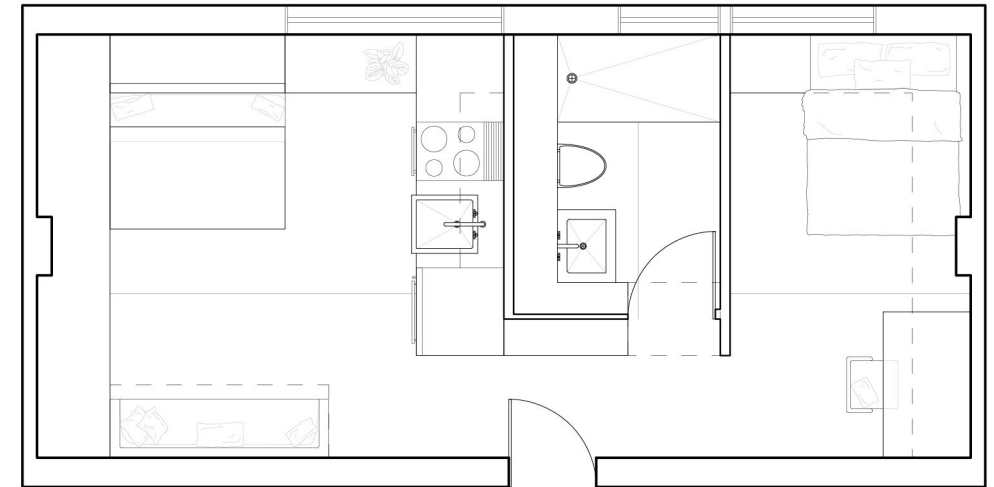


1/4" = 1'-0" Scale Model

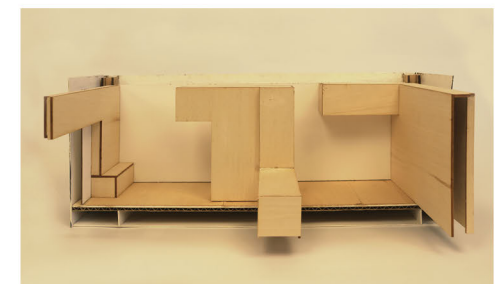




The units are organized along a 16'-6" square grid. The modularity translates from the mass into the interior spatial planning. Choreographed built in elements help to maximize spatial efficiency and frame spaces throughout the interior.



The physical exploration demonstrates the modular components of the interior. A series of built in units exist as their own object inhabiting and defining spatial elements throughout.







Street Perspective View



## 04

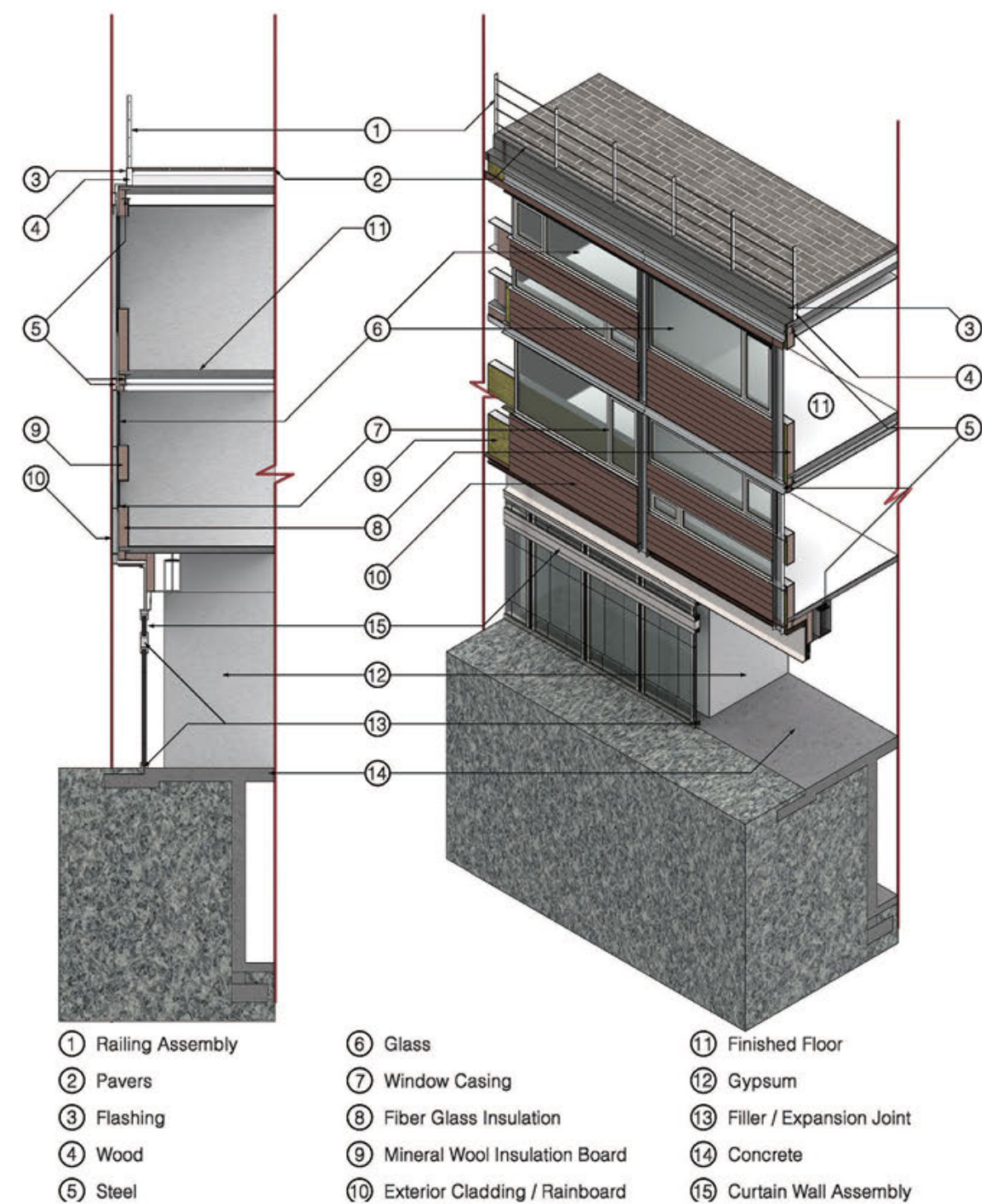
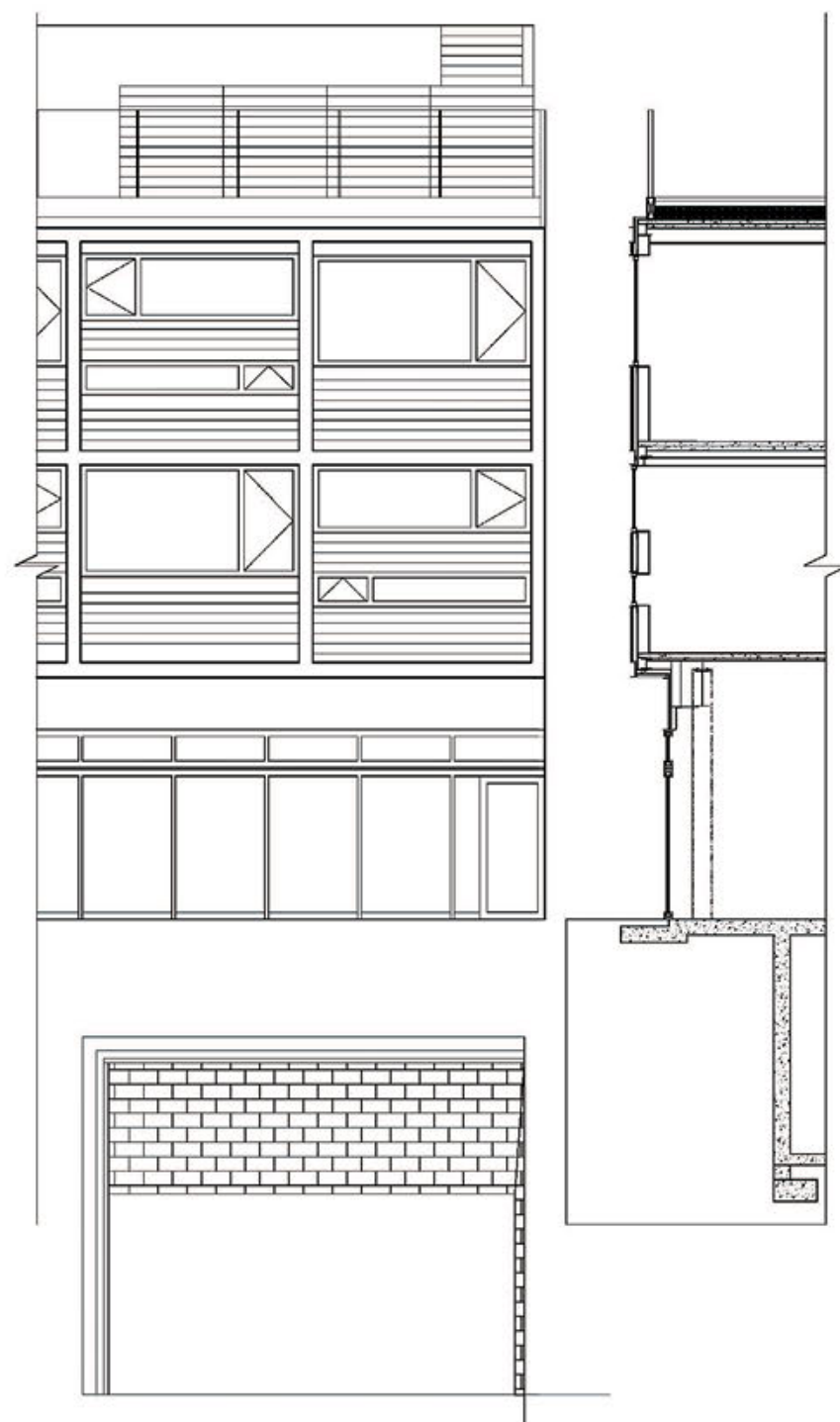
## POD HOTEL ANALYSIS

Brooklyn, New York, New York

Individual Work

Critic: Lonn Combs, Michael Stradley

A study of the Pod Brooklyn Hotel in Brooklyn, New York was done through the analysis and reconstruction of several construction documents. Photographs, construction details and architectural reports were used in order to create an informed and highly detailed reconstruction of a portion of the building. From these detailed reconstructed drawings, a digital model was created in order to visualize and identify all elements of the specific building construction and how they interact tectonically.





# 05

## LA BORDA CASE STUDY

Barcelona, Spain

Individual Work

Critic: Yael Erel

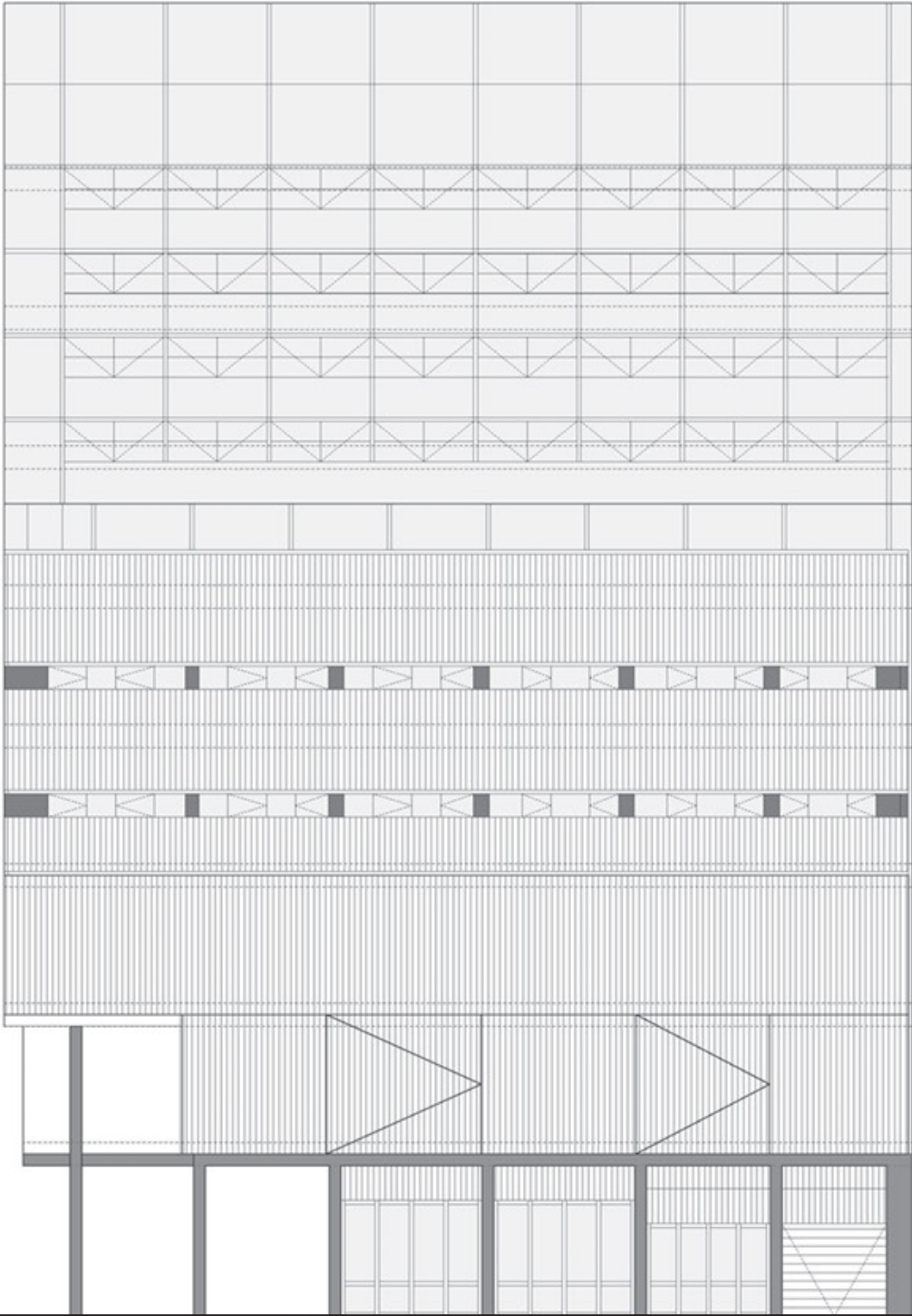
La Borda is a cooperatively owned apartment building located in Barcelona, Spain. La Borda was designed by Lacol Architects. The building consists of a series of studios, one- and two-bedroom apartments. The building uses a elegantly affordable material palette. Primarily using mass timber, the building combines environmental and financial factors to deliver a product which serves its collective owner-residents.

The building organizes a combination of commercial, communal and residential spaces in order to provide a sense of localized community. Through passive solar strategies combined with communal planning so deeply integrated into the design, La Borda creates an island within the city.

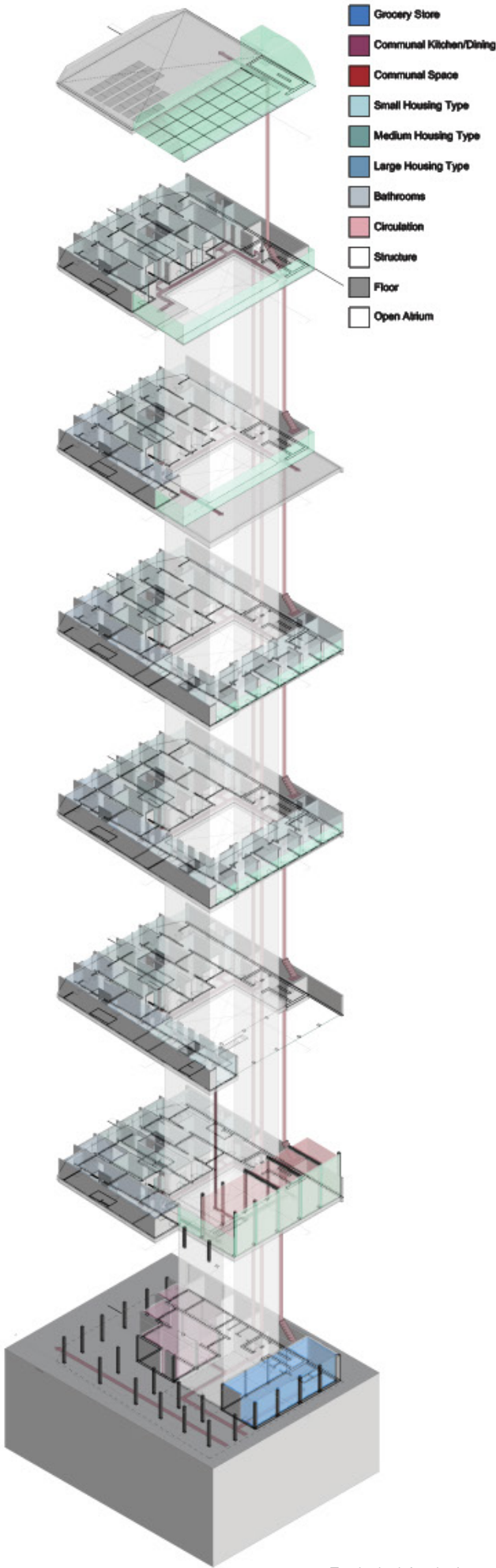


Photo Credit: Lacol Architects

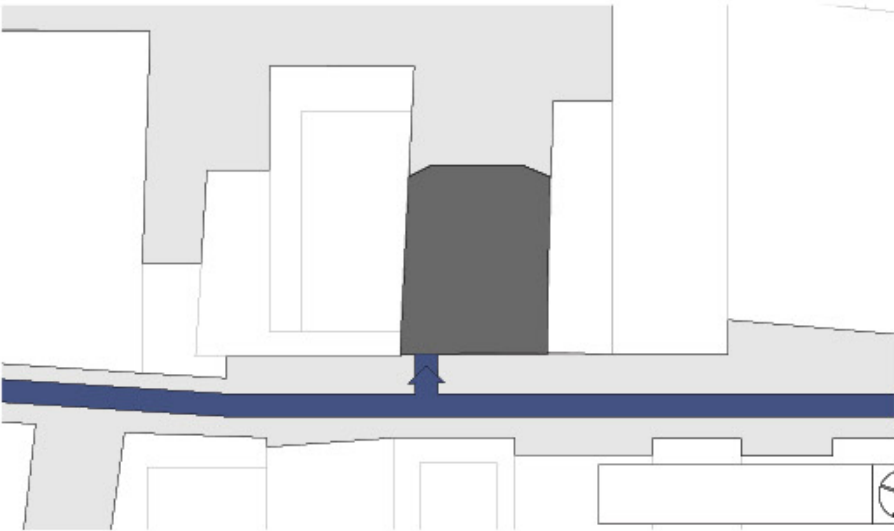




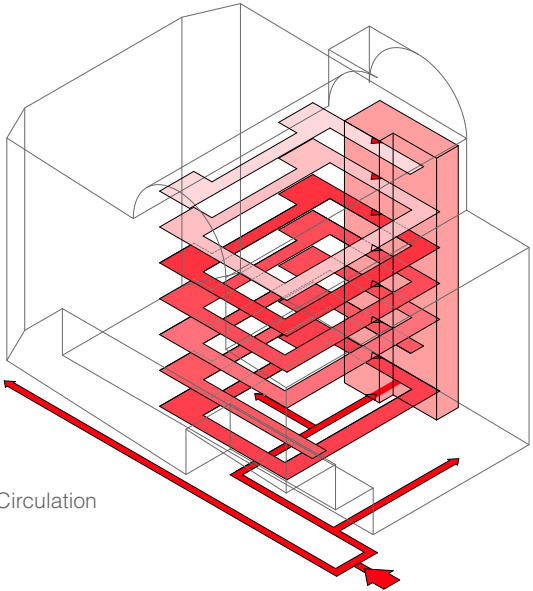
Front Elevation



Exploded Analysis



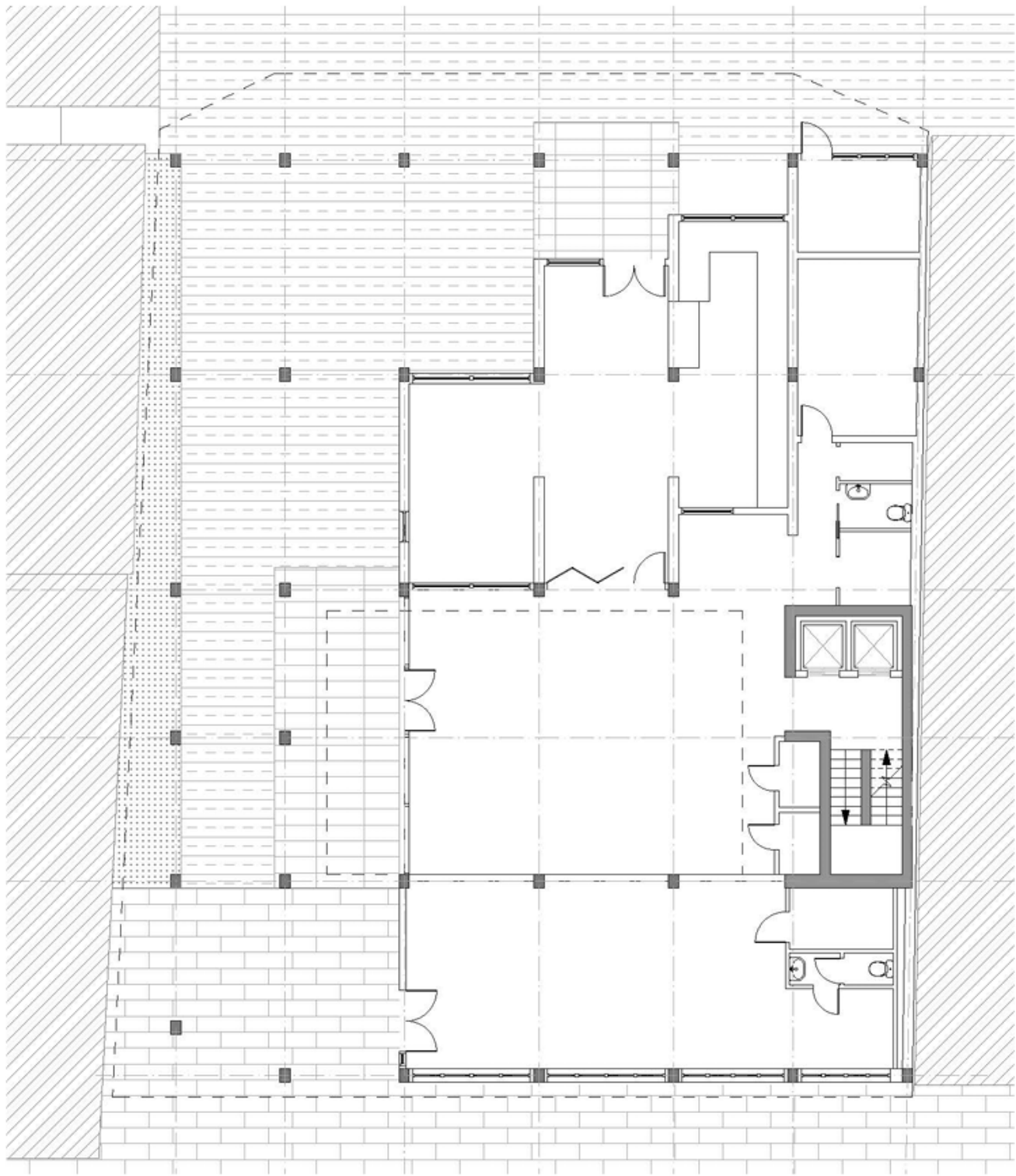
Site Plan



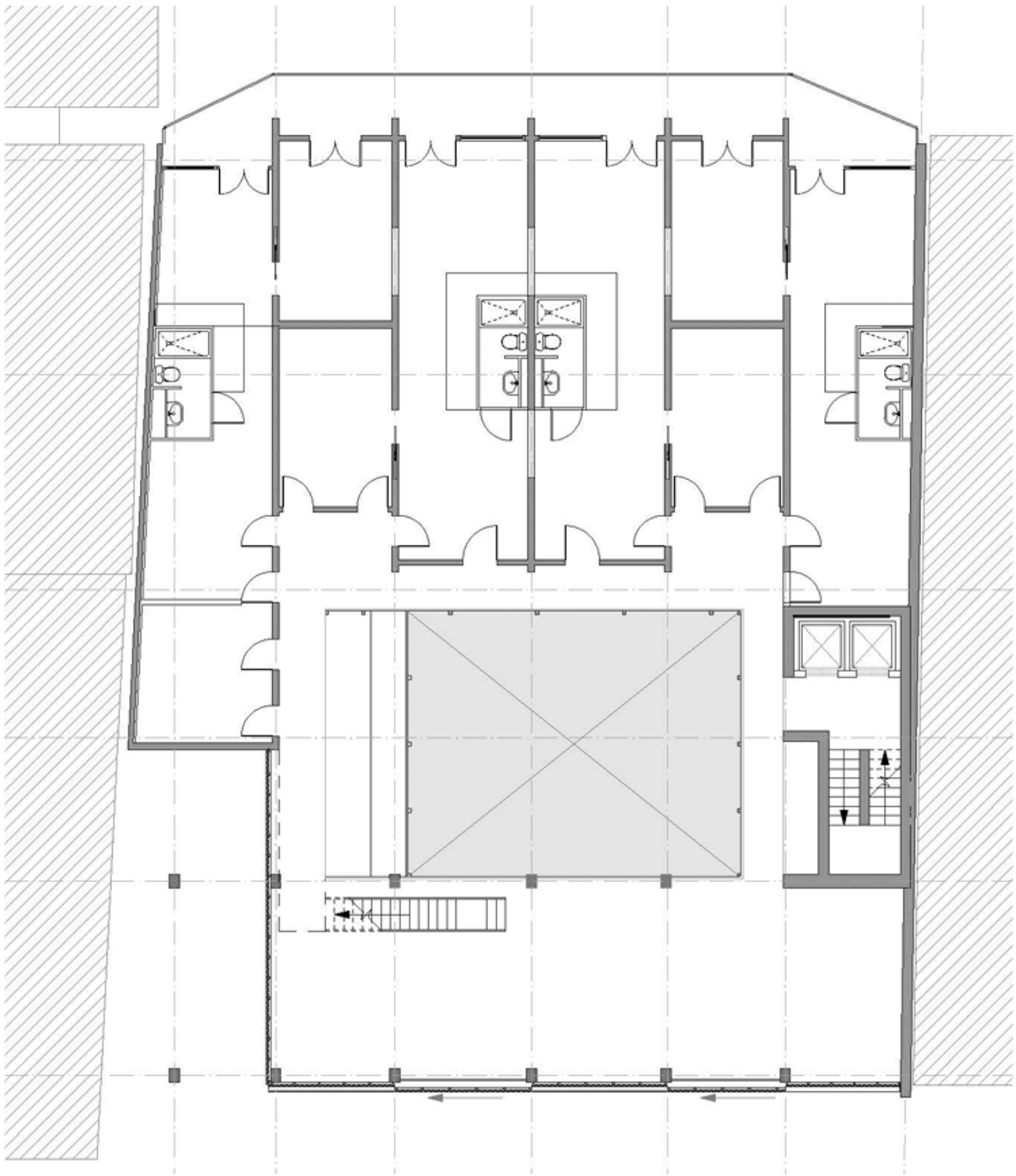
Circulation

A series of walkways exist around the perimeter, at each level of the central atrium. These walkways pose as both a means of circulation and a catalyst for social interaction. The construction of the walkways blends with a minimally expensive constrain for the project. Blending affordable materials thoughtfully contributes to the contextual identity of the building.





Ground Plan



First Plan



# 06

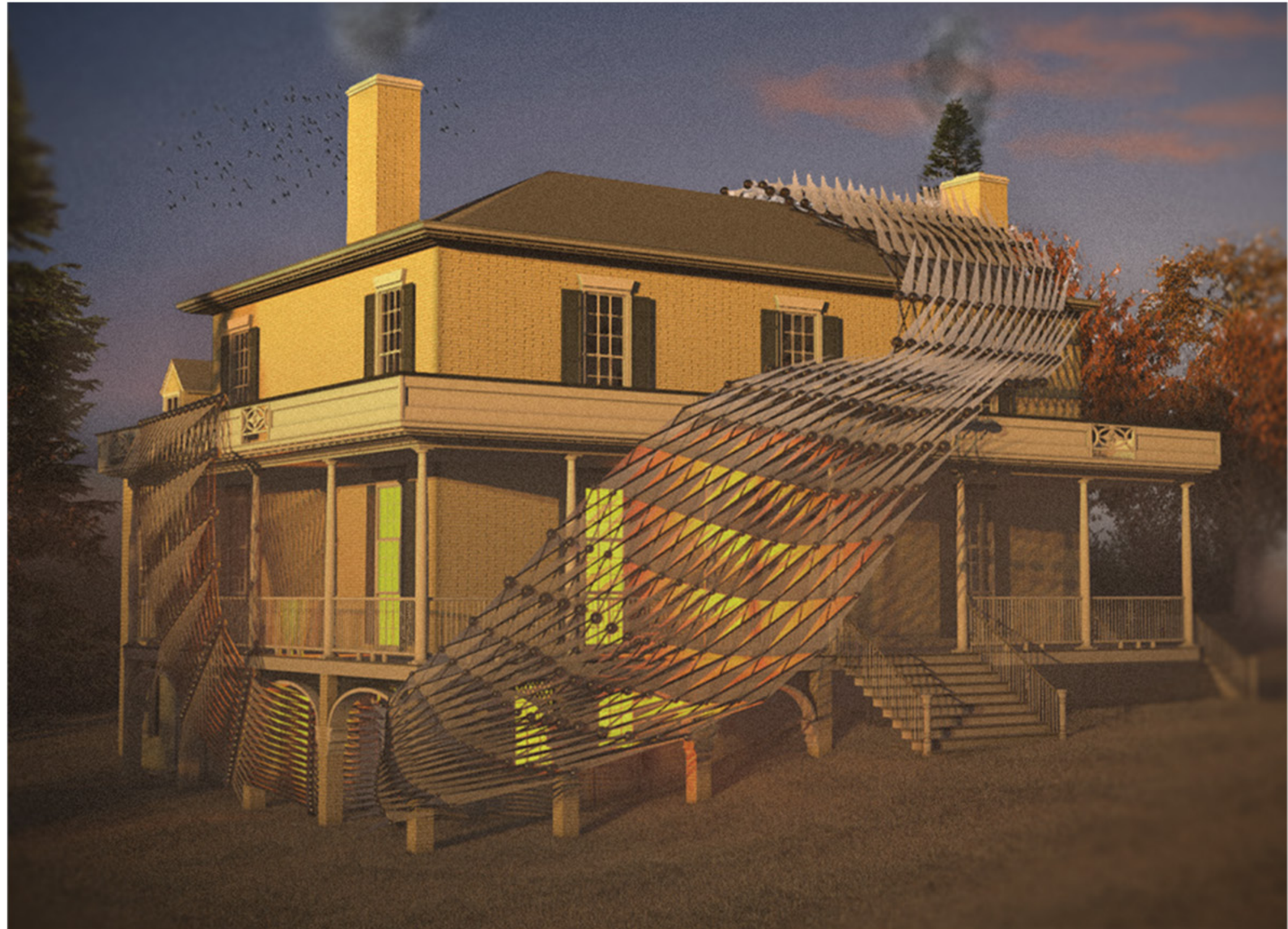
## CONSUMPTION

Catskill, New York

Individual Work

Critic: Fleet Hower

The goal of this exploration was to produce a parametric facade study in relation to a historic piece of architecture on the Thomas Cole Historic Site. A facade development pattern was created in Grasshopper and then was applied to the house. This facade was further developed in order to create a formal relationship in which the facade begins to consume and interact with the geometry of the existing structure. The specific choreography of the facade comes to life as it plays around concealing elements of the house demonstrating an informed and apparent conversation.





**07**

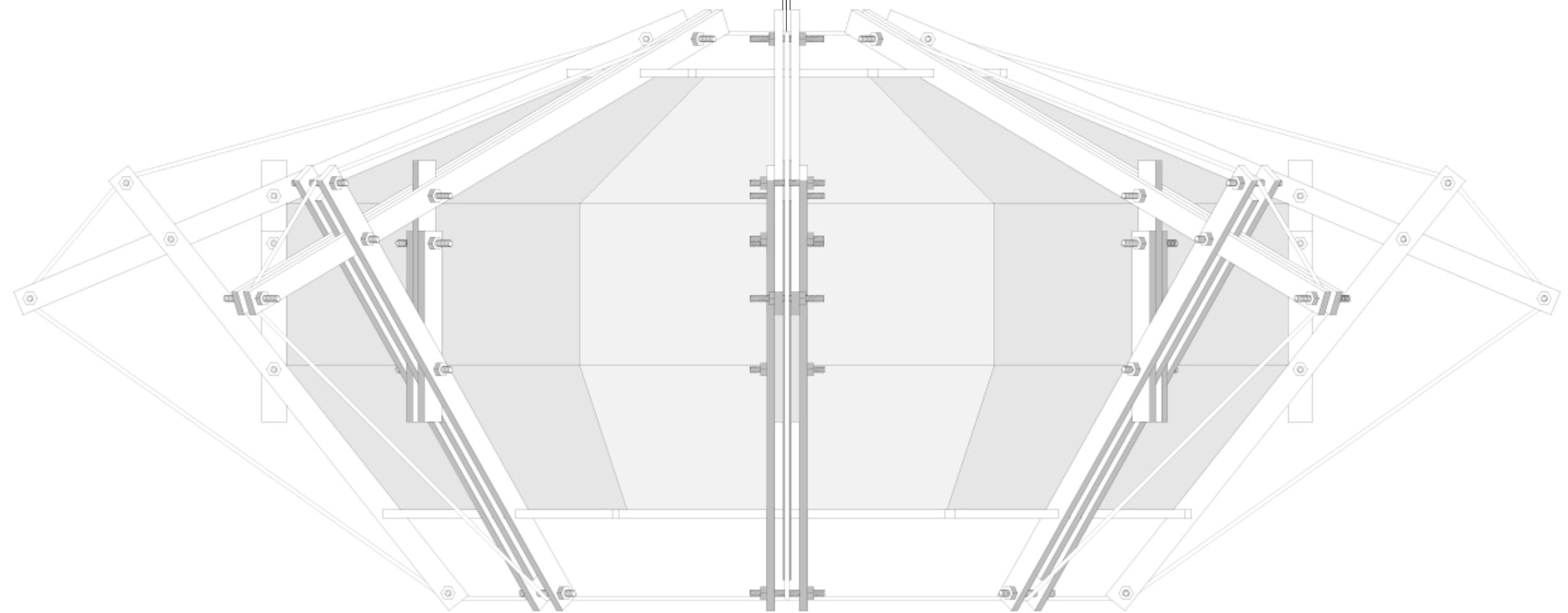
## CONTAINER PENDANT

Ongoing Prototype

Individual Work

MDF, Paper, Cotton String

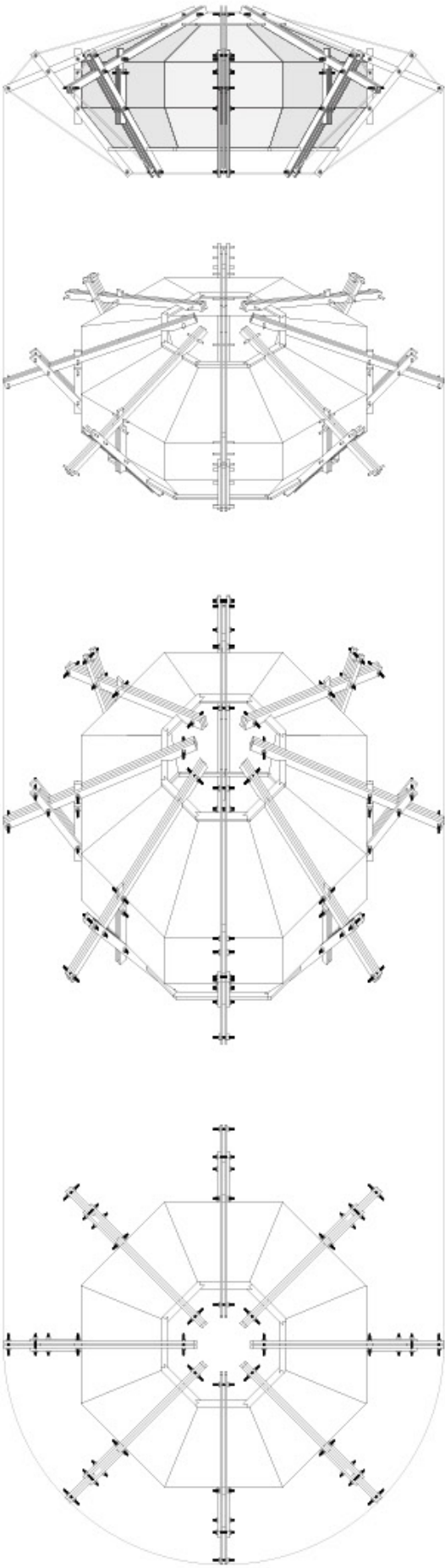
An ongoing exploration into tectonics, and the relationship between a contained focus and its containing envelope. The structure of this pendant uses no adhesives and is held completely in tension. The cotton string serves as the unifying element, existing as one long tensile member running throughout the assembly. The joint system uses a series of linear modules and pinned connections to allow for a semi-flexible assembly which can easily be taken apart and reconstructed.







Illuminated Prototype



Projected Drawing



# Carson Oliver

olivec2@rpi.edu / (831) 275-8793 / Troy, NY / Monterey, CA

archinect.com/ceoliver

## Education

### Rensselaer School of Architecture

*Bachelors of Architecture* 2021-2026

## Experience

### Rutt of Los Altos

*Design Intern* May 2022 - August 2022

Designed Cabinetry elements and designed to space constraints within 1/16" tolerance. Specified finishes, materials and products, as well as installation for contractors.

### Viscusi Elson Interior Design

*Interior Design Intern* May 2021 - August 2021

Worked on spatial planning, drawing, detailing and interior construction specification. Curated and specified furniture, textiles, tile, finishes, lighting and plumbing fixtures. In charge of computer visualization and landscape planning. Completed orders, billing, contractor coordination and scheduling. Made permit drawing sets for city submission, verified building code adherence.

### Rensselaer Career Discovery Program

*Course Assistant* June 2023

Assisted in teaching a summer course hosted by the Rensselaer School of Architecture, which introduced high school students to the field of architecture. Assisted in supervision, teaching Rhino3d, Vray and hand drawing and modeling techniques.

### Monterey High School Theatre

*Audio Visual and Lighting Consultant* 2021-2023

Consulted and specified theatrical lighting systems, networking, audio, projection and control equipment. Installed and set up lighting equipment, integrated audio visual and lighting systems, and installed and set up computer networks. Taught lighting design, audio design, theatrical rigging and technological management courses to current high school students and faculty.

## Publications / Awards

*"Executor," Imaginary Wilds, Oro Editions* 2024

### Honors Review / Archiving

*"Intersect, Infiltrate," Honors, Institute Archiving* Spring 2023

*Architecture Design Studio 1, Honors, Institute Archiving* Fall 2021

## Skills

AutoCAD	<div><div></div></div>
Revit	<div><div></div></div>
Rhino 3d	<div><div></div></div>
Vray	<div><div></div></div>
Adobe Photoshop	<div><div></div></div>
Adobe Illustrator	<div><div></div></div>
Adobe InDesign	<div><div></div></div>
Adobe After Effects	<div><div></div></div>
Microsoft Office Suite	<div><div></div></div>
ChromaQ Vista	<div><div></div></div>
QLab	<div><div></div></div>
QGIS	<div><div></div></div>

## Community Involvement

### Monterey Bay Aquarium

*Exhibit Docent Volunteer* 2018-2020

### Monterey Bay Aquarium

*Education Material Development* June 2019

### Friends of Seaside Parks Association

*Volunteer* June 2022 - July 2022

### Big Sur Grange

*Volunteer & Community Member* 2015 - 2021

## References

### Gina Viscusi-Elson

*Principal, Viscusi Elson Interior Design*  
gina@viscusielson.com / (650) 941-7800

### Alicia Welch

*Program Director, Monterey High Theatre*  
awelch@mpusd.net / (831) 402-7238



Thank You