



# **SAM SANDERS**

AIA, NOMA, GBA

SELECTED WORK

---

2023



# MARKET ST. RESIDENCE

OXFORD, MD / 2016





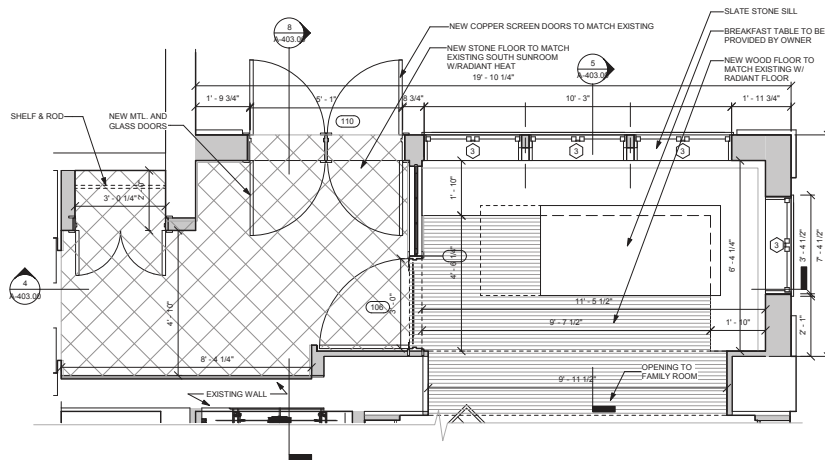




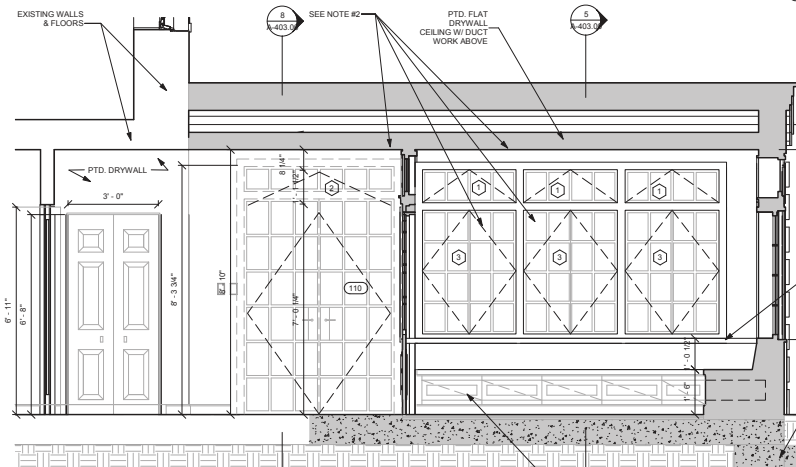
# **POUND RIDGE RESIDENCE**

**BEDFORD, NY / 2017**

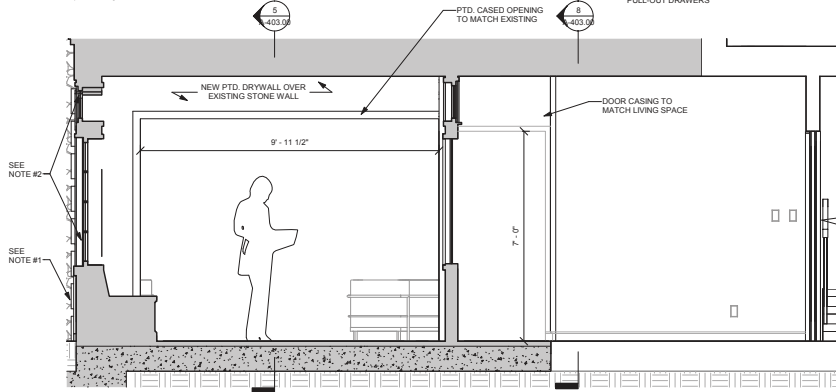




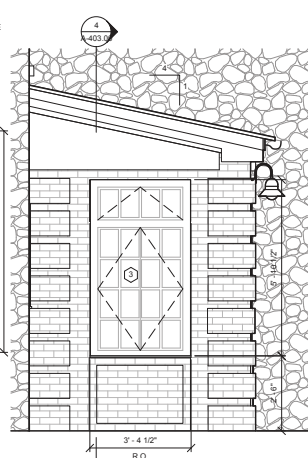
1 NORTH SUNROOM ADDITION  
1/2" = 1'-0"



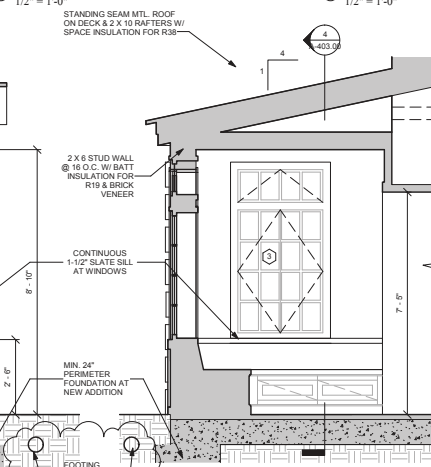
1 SECTION - SOUTH TO NORTH  
1/2" = 1'-0"



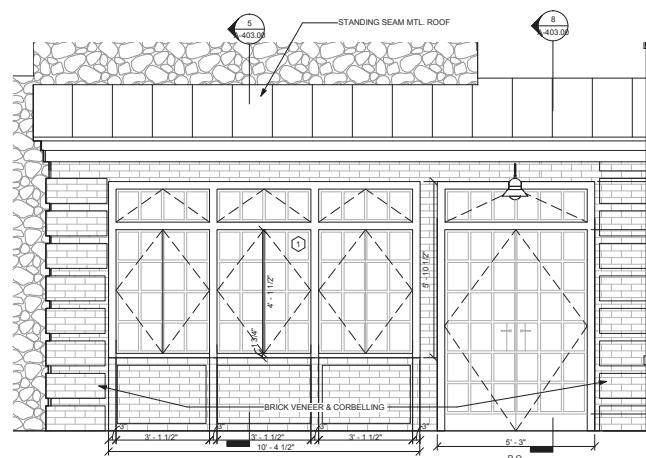
1 SECTION - NORTH TO SOUTH  
1/2" = 1'-0"



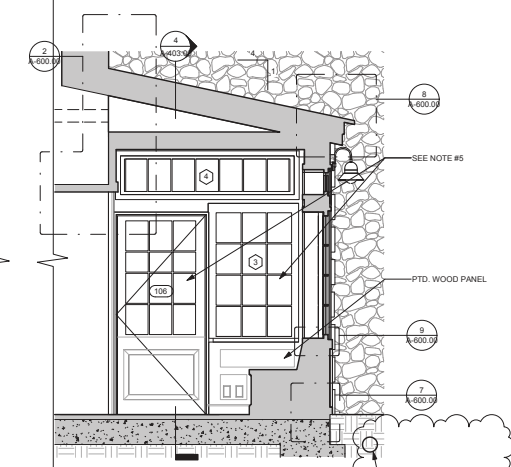
2 ELEVATION - NORTH  
1/2" = 1'-0"



3 SECTION - WEST TO EAST  
1/2" = 1'-0"



3 ELEVATION - WEST  
1/2" = 1'-0"



6 SECTION - EAST TO WEST  
1/2" = 1'-0"



8 SECTION 2 - WEST TO EAST  
1/2" = 1'-0"

We were tasked with expanding and modernizing an early 20th century upstate New York estate. Paying close detail to the existing context of the house and considering long lasting, quality renovations, we assembled a design for a full kitchen renovation, a sunroom expansion, and a redesign of the first floor living spaces. This project focused heavily on a range of design and detailing elements, from the base board profile to the cobbling of the stonework. Pound Ridge is currently under construction.



# PETRA MINISTRIES CAFE

PITTSBURGH, PA / 2017









# GOVERNMENT HOUSE RESTORATION INITIATIVE

ST. JOHNS ANTIGUA, ANTIGUA & BARBUDA / 2019



GATE HOUSE (NIC)

GATE HOUSE  
PARKING (NIC)REPUROSE  
EXISTING BRICK  
FOR CROSSWALK  
(NIC)

WOOD BENCH (NIC)

BROOM SWEPT  
WALKING PATH W/ 6"  
SOLDIER COURSE  
(NIC)

PHASE 1

OUTDOOR CLASSROOM  
W/ REASSEMBLED  
EXISTING STONE STEPS

PHASE 1

Located in the Caribbean heart of the capital city of the tiny island nation of Antigua & Barbuda lives the historic Government House. Established in a Parsonage dating from the 1700s, Government House has been the official residence of the islands' Governor General since 1800.

Through its nearly three century history, Government House has suffered from severe weather conditions, including hurricanes, earthquakes, and neglect.

The grounds, overgrown and romantic, feature exquisite mature specimen trees, including West Indian mahogany, red cedar, and lignum vitae. Conservation measures for the house, outbuildings, and the gardens are needed to stem the progressing decay, which, if ignored, will soon be impossible to repair and even more costly to reinstate.

GHRI has been a project for the people.



ADMIN. PARKING

SERVICE  
COURTYARD

GARAGE

SERVICE  
BUILDING

WEST WING

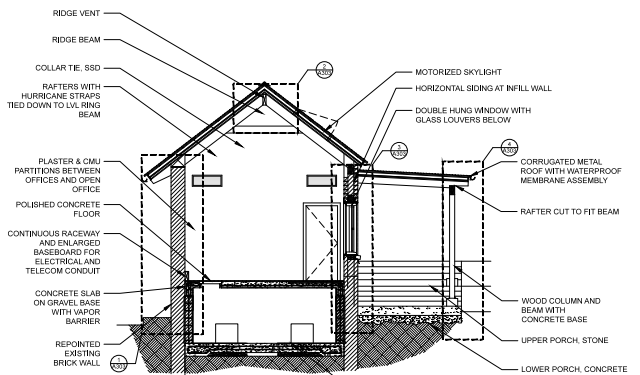
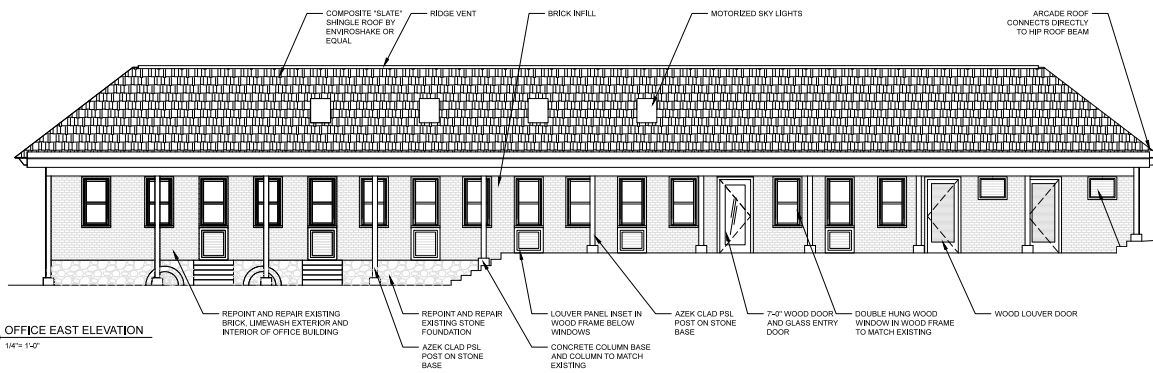
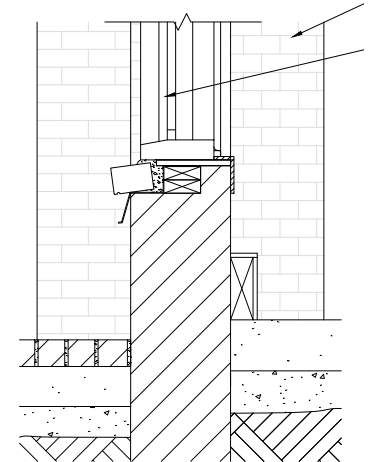


Architectural elevation drawing of a two-story building. The left side features a gabled roof and a porch with columns. The right side has a flat roof and a brick chimney. A label "HARDIE BD SIDING" points to the upper right section.



software: autocad, illustrator, photoshop, model making







# PWSA: PGH20 2030 PLAN

PITTSBURGH, PA / 2019 - 20





WIGHTMAN PARK CONCEPT PLAN

Located along the Allegheny River, the Water Treatment Plant (WTP) draws our water and treats it before it's distributed to our customers in Pittsburgh and neighboring communities. With the last major modernization completed in 1969, the WTP, like much of the system, has suffered from a lack of investment for years.

In addition, PWSA will upgrade its two finished water pumping stations, both more than 50 years old. While the innerworkings of the plant are essential to the treatment and distribution of water, the exterior of the building, its connection to the river, and surrounding environment are also critically important to us.


The new water treatment facility will also incorporate a new community mural to highlight the historical significance of the rivers and their importance to Pittsburgh. PWSA currently estimates the initial investment to be approximately \$120 million. PWSA envisions modernizing the buildings to meet current standards for energy efficiency, utilizing renewable energy, and adhering to industry leading green building standard.



# SHARPSBURG PUBLIC LIBRARY

SHARPSBURG, PA / 2015

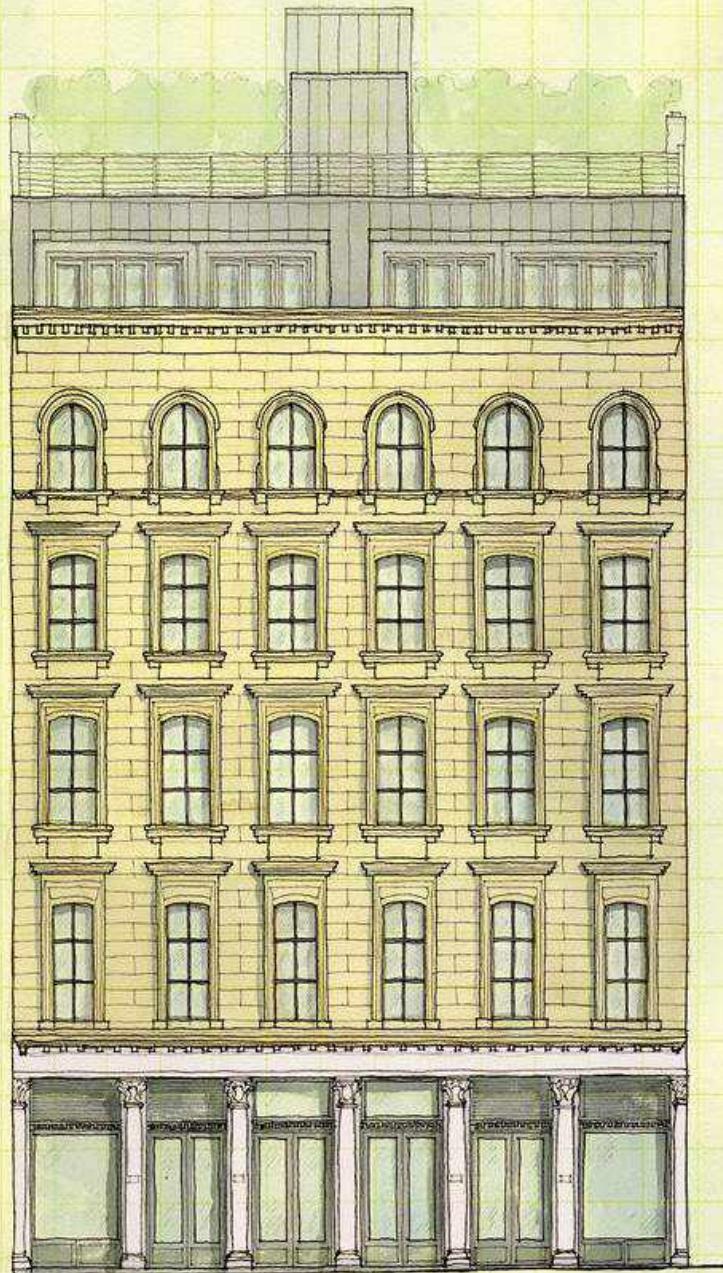


The image shows the interior of a modern library. The walls are a vibrant orange color. The ceiling is made of exposed wooden beams and features several large, silver, cylindrical ducts that run horizontally. There are also several circular openings in the ceiling. Large windows on the right side of the room provide a view of the outside world, showing a street with parked cars and buildings. In the foreground, there are several long, dark wooden tables with blue chairs. A small potted plant is visible in the background. The overall atmosphere is bright and modern.

The Borough of Sharpsburg began this project with the idea that their public library would become a centerpiece for Main Street, that would spark new vibrancy to their central commercial district. This library replaces a mundane building with a bold community asset that is sparking a change in perception of the district and be a harbinger of new development. The project involves an addition and renovation, tripling the size of the existing structure. Pittsburgh Quarterly describes the Sharpsburg Community

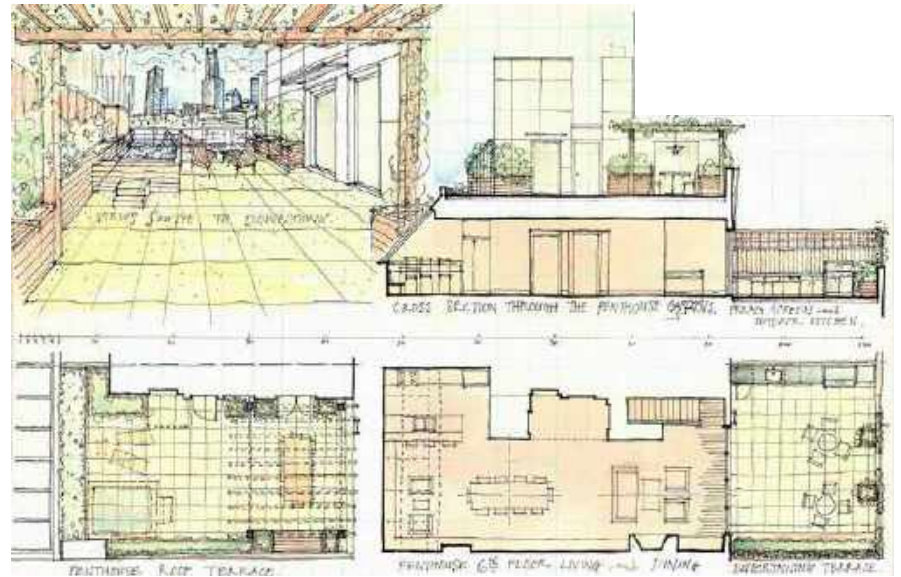
Library as “an effective metaphor for the experience of the library as a place where a community assembles.” Built within a tight budget of \$206 /sf, the library is not only well suited to the intellectual stimulation of reading, but also captivates users and the entire community and can accommodate many activities dynamically. This library is not only an inviting and memorable experience... not just a place to go, but now, a place to be.





# READE ST. CONDOMINIUM

NEW YORK, NY / 2020

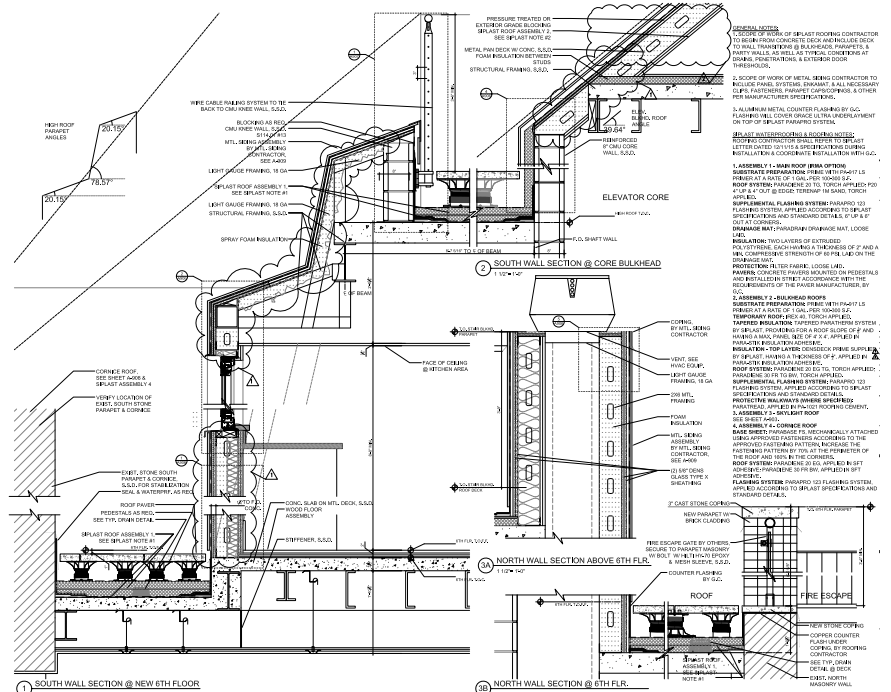
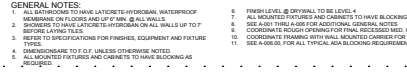
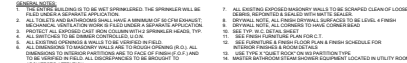


This former loft and multi level production factory has been converted into a modern, up and coming multi-family condominium. Located in the center of Manhattan's financial district, this Tribeca repurposed historical landmark seamlessly blends preservation and historic conservation with clean, simplified and high end living.

This project has been laid out as a fully fledged project with full design and production engagement including: project management, systems coordination, design/ build, construction documents, ASIs, revision bulletins, door/ window and finish schedules, and spec and finish management. Covering everything from interior design to HVAC and electrical coordination, Reade Street is a highly and extensefully detail orientated project that both pays respect to the rich story of what was, but also paves the way for what will be.

66 Reade is currently under construction.





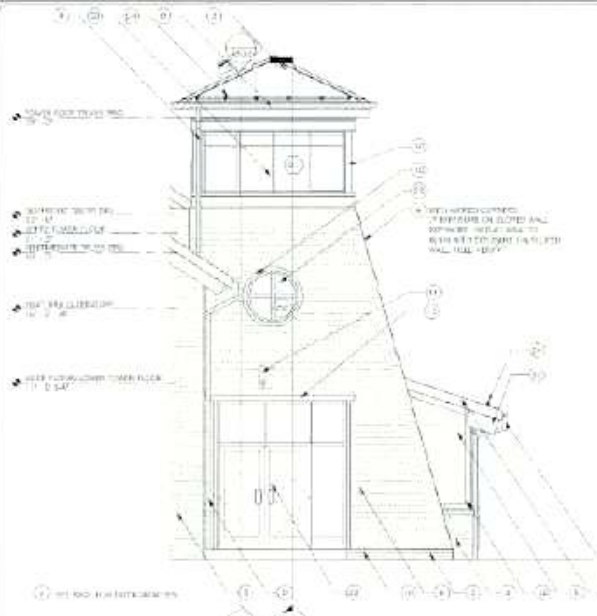




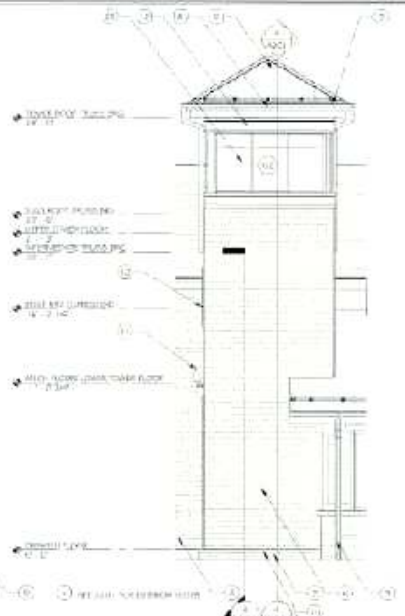








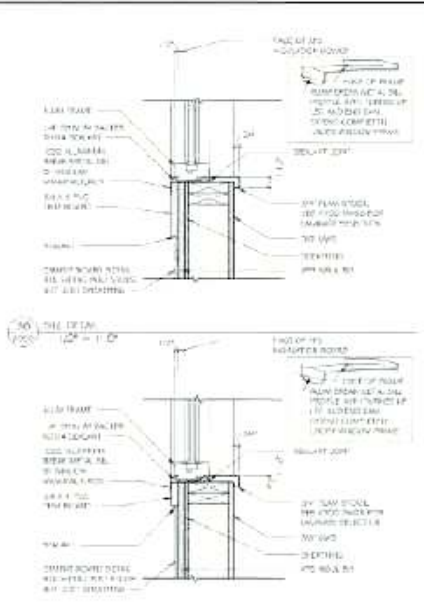
1 WEST BUILDING ELEVATION - ADD AT 1  
SCALE: 1/4" = 1'-0"



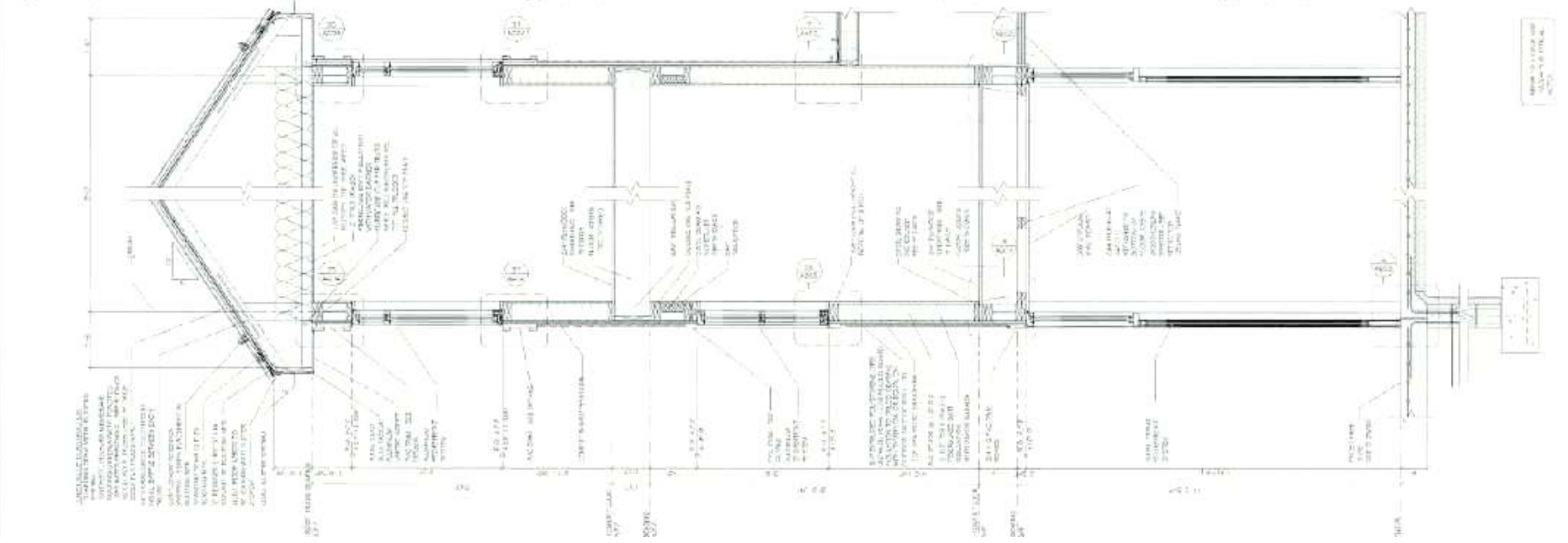
2 SOUTH BUILDING ELEVATION - ADD AT 1  
SCALE: 1/4" = 1'-0"



3 SOUTH BUILDING ELEVATION - ADD AT 1  
SCALE: 1/4" = 1'-0"



4 SOUTH BUILDING ELEVATION - ADD AT 1  
SCALE: 1/4" = 1'-0"



5 SOUTH BUILDING ELEVATION - ADD AT 1  
SCALE: 1/4" = 1'-0"

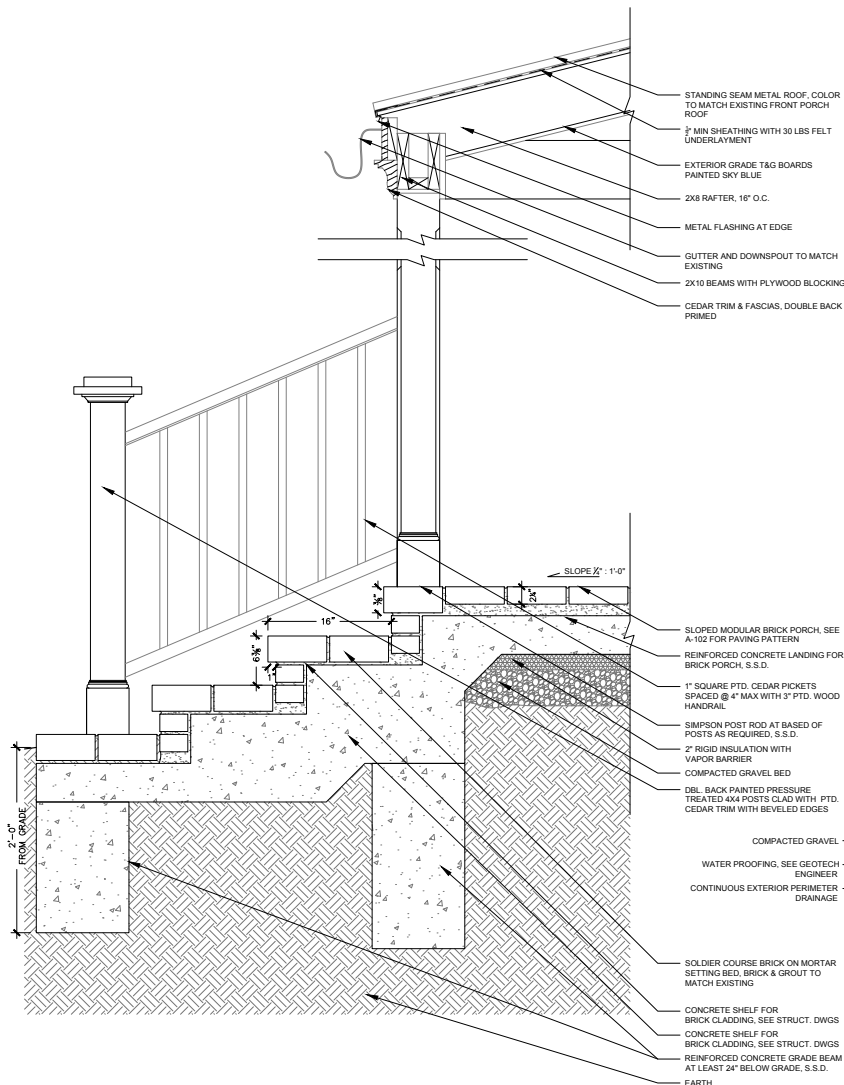




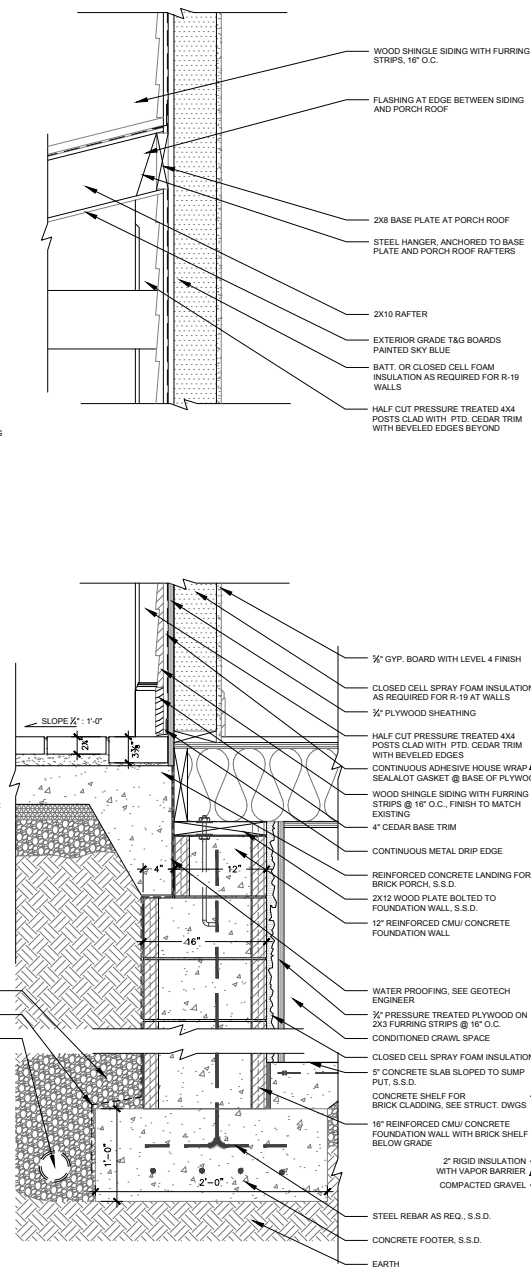


1. SEE STRUCTURAL DRAWINGS (S.S.D.) FOR NOTES, FRAMING & DETAILS FOR FOUNDATIONS & FOUNDATIONS
2. ALL EXTERIOR TRIM & FASCIA BOARDS TO BE WESTERN RED CEDAR, DBL BACK PAINTED & CUT ENDS SEALED

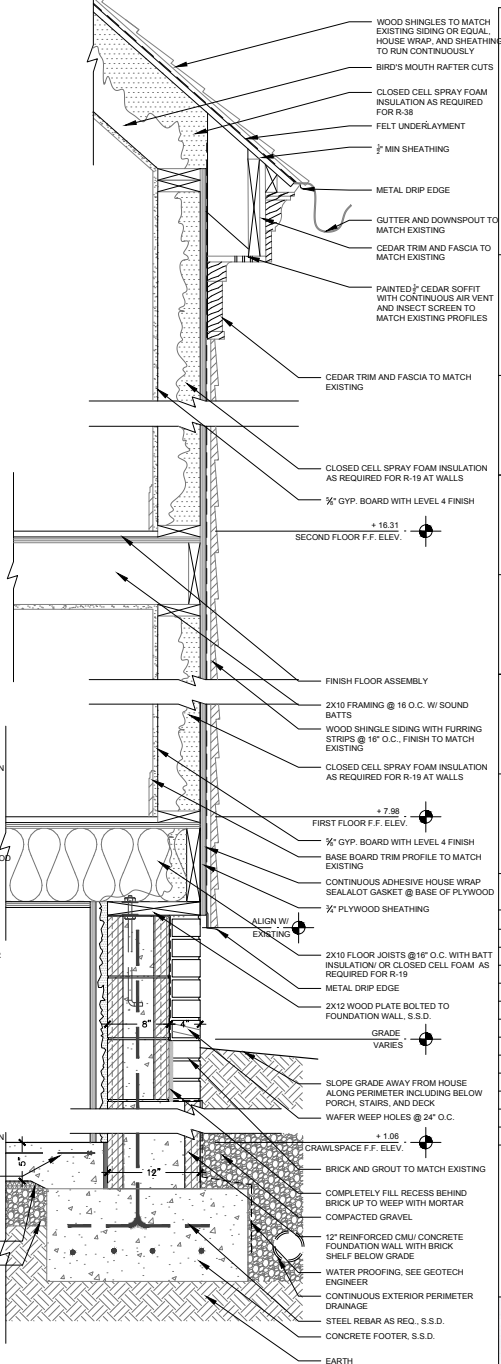
1 WALL S  
1 1/2" = 1'-0"



1 WALL SECTION @ NEW BRICK PORCH STEPS  
1 1/2" = 1'-0"



2 WALL SECTION @ NEW BRICK PORCH & ADDITION WALL  
1 1/2" = 1'-0"



3 TYP. WALL SECTION @ NEW ADDITION  
1 1/2" = 1'-0"



5

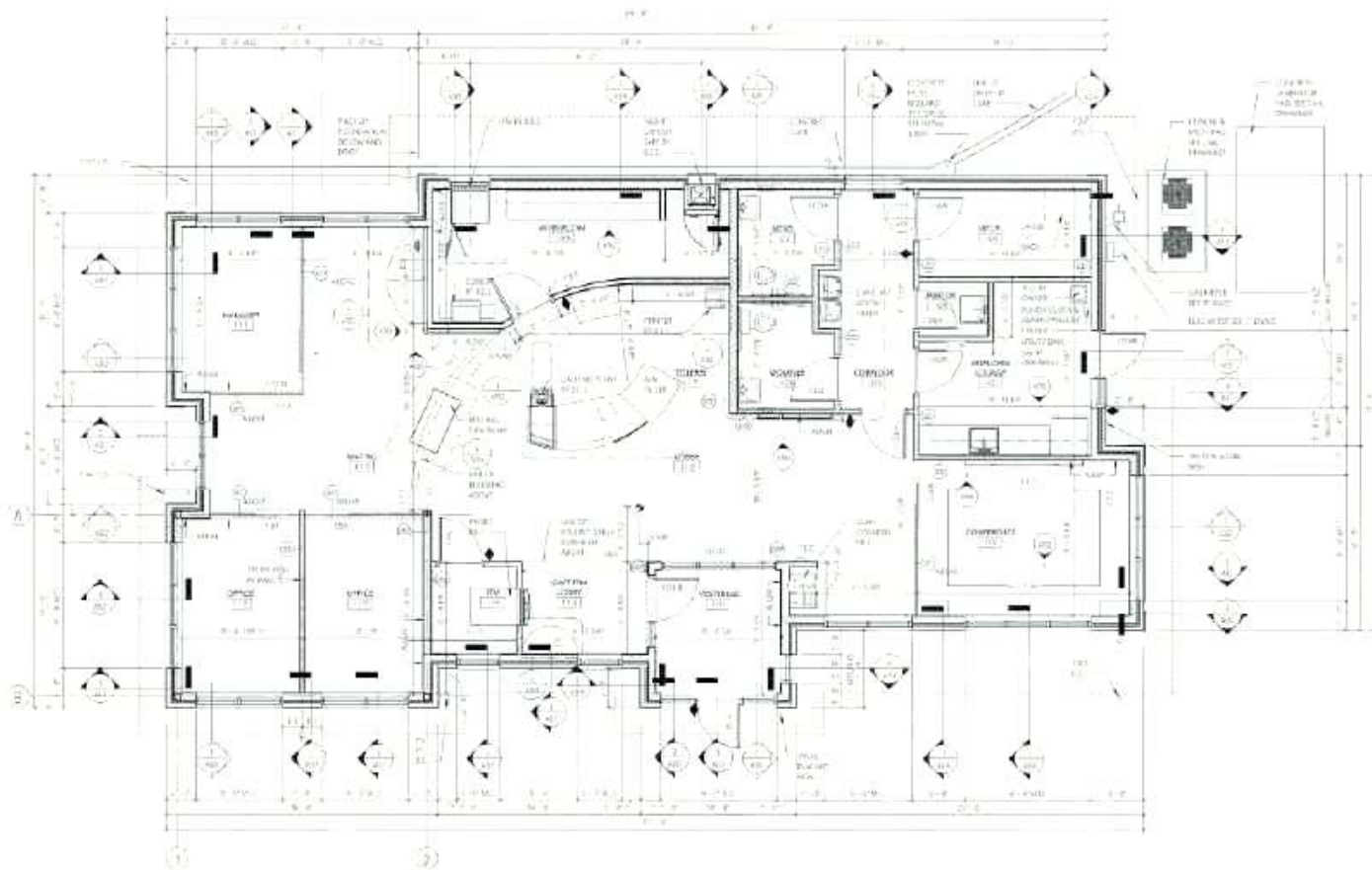
4 WALL SECTION  
A313 3/4" = 1'-0"

the appearance of the first stages of the disease.

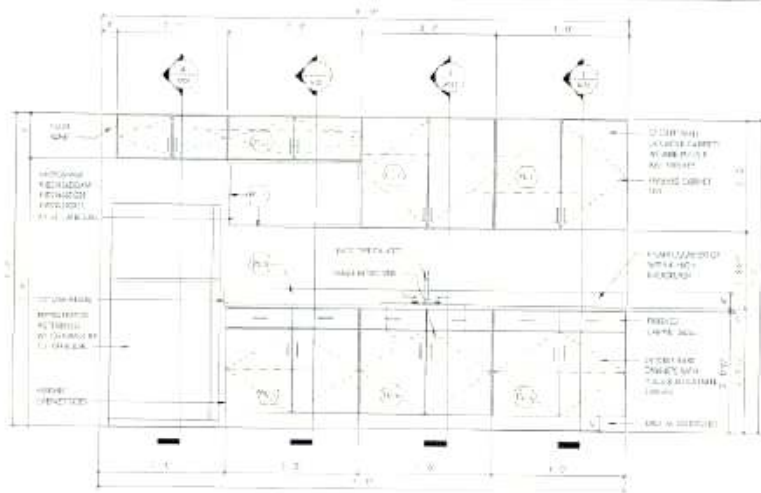
10.27032/1-4-38-34-P4-Cyberjournals/Documents/The Drive Bank Great.com.CDs ICEBALL, sm.sardella.BNRv1

GENERAL NOTES

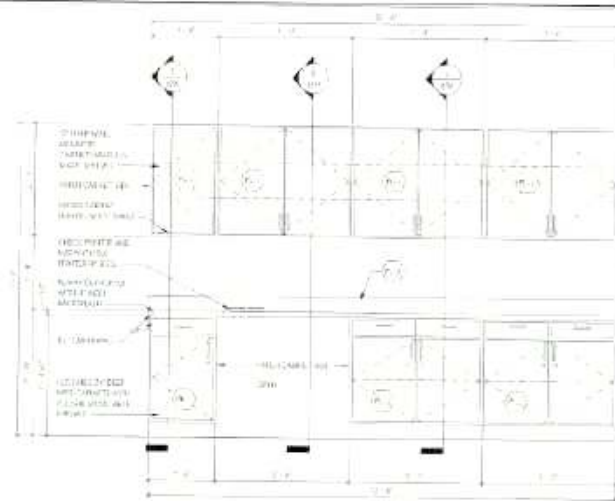
1. 下列哪个选项不是《说文解字》的部首？  
A. 一 B. 丨 C. 丶 D. 乙
2. 《说文解字》中，哪个部首的形体与“人”相似？  
A. 亻 B. 亼 C. 亼 D. 亼
3. 下列哪个选项是《说文解字》中的“六书”之一？  
A. 象形 B. 指事 C. 会意 D. 形声
4. 《说文解字》中，哪个部首的形体与“水”相似？  
A. 氵 B. 冫 C. 凵 D. 凵
5. 下列哪个选项是《说文解字》中的“六书”之一？  
A. 象形 B. 指事 C. 会意 D. 形声
6. 《说文解字》中，哪个部首的形体与“火”相似？  
A. 灬 B. 冫 C. 凵 D. 凵
7. 下列哪个选项是《说文解字》中的“六书”之一？  
A. 象形 B. 指事 C. 会意 D. 形声
8. 《说文解字》中，哪个部首的形体与“木”相似？  
A. 木 B. 丨 C. 丶 D. 乙
9. 下列哪个选项是《说文解字》中的“六书”之一？  
A. 象形 B. 指事 C. 会意 D. 形声
10. 《说文解字》中，哪个部首的形体与“金”相似？  
A. 钅 B. 冫 C. 凵 D. 凵
11. 下列哪个选项是《说文解字》中的“六书”之一？  
A. 象形 B. 指事 C. 会意 D. 形声
12. 《说文解字》中，哪个部首的形体与“土”相似？  
A. 土 B. 丨 C. 丶 D. 乙
13. 下列哪个选项是《说文解字》中的“六书”之一？  
A. 象形 B. 指事 C. 会意 D. 形声
14. 《说文解字》中，哪个部首的形体与“石”相似？  
A. 石 B. 冫 C. 凵 D. 凵
15. 下列哪个选项是《说文解字》中的“六书”之一？  
A. 象形 B. 指事 C. 会意 D. 形声
16. 《说文解字》中，哪个部首的形体与“水”相似？  
A. 氵 B. 冫 C. 凵 D. 凵
17. 下列哪个选项是《说文解字》中的“六书”之一？  
A. 象形 B. 指事 C. 会意 D. 形声
18. 《说文解字》中，哪个部首的形体与“火”相似？  
A. 灬 B. 冫 C. 凵 D. 凵
19. 下列哪个选项是《说文解字》中的“六书”之一？  
A. 象形 B. 指事 C. 会意 D. 形声
20. 《说文解字》中，哪个部首的形体与“木”相似？  
A. 木 B. 丨 C. 丶 D. 乙



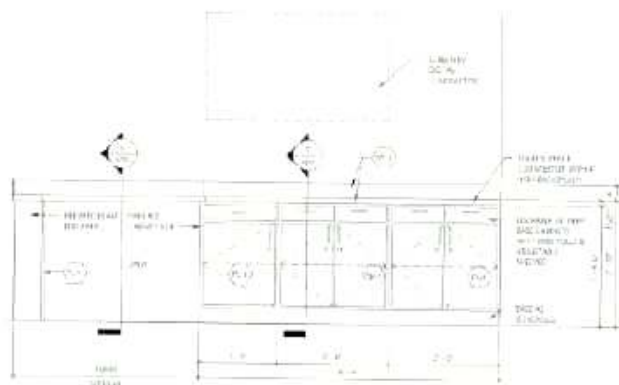




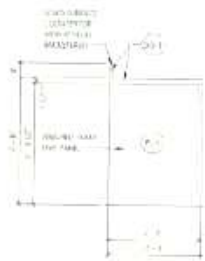
1. 1ST FLOOR  
1/4" = 1'-0"



2. 2ND FLOOR  
1/4" = 1'-0"



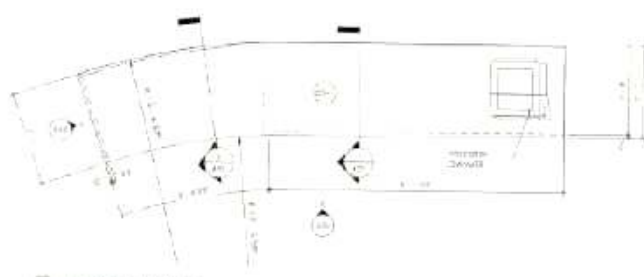
3. 3RD FLOOR  
1/4" = 1'-0"



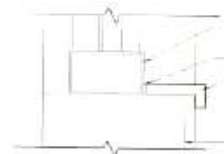
4. 4TH FLOOR  
1/4" = 1'-0"



5. 5TH FLOOR  
1/4" = 1'-0"



6. 6TH FLOOR  
1/4" = 1'-0"



7. 7TH FLOOR  
1/4" = 1'-0"

PLATE LAMINATE FINISH SCHEDULE						
NO.	AREA	FINISH	NO.	AREA	FINISH	NO.
1.1	WALLS	PLATE LAMINATE	1.2	CEILING	PLATE LAMINATE	1.3
1.4	FLOORS	PLATE LAMINATE	1.5	DOORS	PLATE LAMINATE	1.6
1.7	WALLS	PLATE LAMINATE	1.8	CEILING	PLATE LAMINATE	1.9
1.10	FLOORS	PLATE LAMINATE	1.11	DOORS	PLATE LAMINATE	1.12
1.13	WALLS	PLATE LAMINATE	1.14	CEILING	PLATE LAMINATE	1.15
1.16	FLOORS	PLATE LAMINATE	1.17	DOORS	PLATE LAMINATE	1.18
1.19	WALLS	PLATE LAMINATE	1.20	CEILING	PLATE LAMINATE	1.21
1.22	FLOORS	PLATE LAMINATE	1.23	DOORS	PLATE LAMINATE	1.24
1.25	WALLS	PLATE LAMINATE	1.26	CEILING	PLATE LAMINATE	1.27
1.28	FLOORS	PLATE LAMINATE	1.29	DOORS	PLATE LAMINATE	1.30
1.31	WALLS	PLATE LAMINATE	1.32	CEILING	PLATE LAMINATE	1.33
1.34	FLOORS	PLATE LAMINATE	1.35	DOORS	PLATE LAMINATE	1.36
1.37	WALLS	PLATE LAMINATE	1.38	CEILING	PLATE LAMINATE	1.39
1.40	FLOORS	PLATE LAMINATE	1.41	DOORS	PLATE LAMINATE	1.42
1.43	WALLS	PLATE LAMINATE	1.44	CEILING	PLATE LAMINATE	1.45
1.46	FLOORS	PLATE LAMINATE	1.47	DOORS	PLATE LAMINATE	1.48
1.49	WALLS	PLATE LAMINATE	1.50	CEILING	PLATE LAMINATE	1.51
1.52	FLOORS	PLATE LAMINATE	1.53	DOORS	PLATE LAMINATE	1.54
1.55	WALLS	PLATE LAMINATE	1.56	CEILING	PLATE LAMINATE	1.57
1.58	FLOORS	PLATE LAMINATE	1.59	DOORS	PLATE LAMINATE	1.60
1.61	WALLS	PLATE LAMINATE	1.62	CEILING	PLATE LAMINATE	1.63
1.64	FLOORS	PLATE LAMINATE	1.65	DOORS	PLATE LAMINATE	1.66
1.67	WALLS	PLATE LAMINATE	1.68	CEILING	PLATE LAMINATE	1.69
1.70	FLOORS	PLATE LAMINATE	1.71	DOORS	PLATE LAMINATE	1.72
1.73	WALLS	PLATE LAMINATE	1.74	CEILING	PLATE LAMINATE	1.75
1.76	FLOORS	PLATE LAMINATE	1.77	DOORS	PLATE LAMINATE	1.78
1.79	WALLS	PLATE LAMINATE	1.80	CEILING	PLATE LAMINATE	1.81
1.82	FLOORS	PLATE LAMINATE	1.83	DOORS	PLATE LAMINATE	1.84
1.85	WALLS	PLATE LAMINATE	1.86	CEILING	PLATE LAMINATE	1.87
1.88	FLOORS	PLATE LAMINATE	1.89	DOORS	PLATE LAMINATE	1.90
1.91	WALLS	PLATE LAMINATE	1.92	CEILING	PLATE LAMINATE	1.93
1.94	FLOORS	PLATE LAMINATE	1.95	DOORS	PLATE LAMINATE	1.96
1.97	WALLS	PLATE LAMINATE	1.98	CEILING	PLATE LAMINATE	1.99
1.100	FLOORS	PLATE LAMINATE	1.101	DOORS	PLATE LAMINATE	1.102

