

## SELECTED WORKS

- + UNDERGRADUATE ACADEMIC
- + POST GRADUATE ACADEMIC
- + COMPETITION
- + FELLOWSHIP



+ CRANBERRY BOGS IN WAREHAM, MA  
+ SEPT 2022





+ VINEYARDS AT BODEGA ALPAMANTA IN MENDOZA, ARGENTINA  
+ MAY 2023

SELECTED WORKS

ROCIO ALONSO

TABLE OF CONTENTS

+ Works completed as a student of the Harvard Graduate School of Design and the University of Houston College of Architecture and Design.

+ Works completed independently unless otherwise noted.

01	Un Folklore Vitivinicola + Harvard GSD	4
02	Another Park Along the Seine + Harvard GSD	10
03	Pairing the Paisajes + Harvard GSD	16
04	Culture Farm + Harvard GSD	20
05	The Bog Belt + Harvard GSD	24
06	Let's Meet at the Plane + Competition	28
07	Modular Green + Univ. of Houston CoAD	30
08	Mass & Void + Univ. of Houston CoAD	32
09	After the Strip Mines + Univ. of Houston CoAD	36
10	Visualizing Harborwalk 2.0 + Boston Harbor Now	40



# 01 UN FOLKLORE VITIVINICOLA

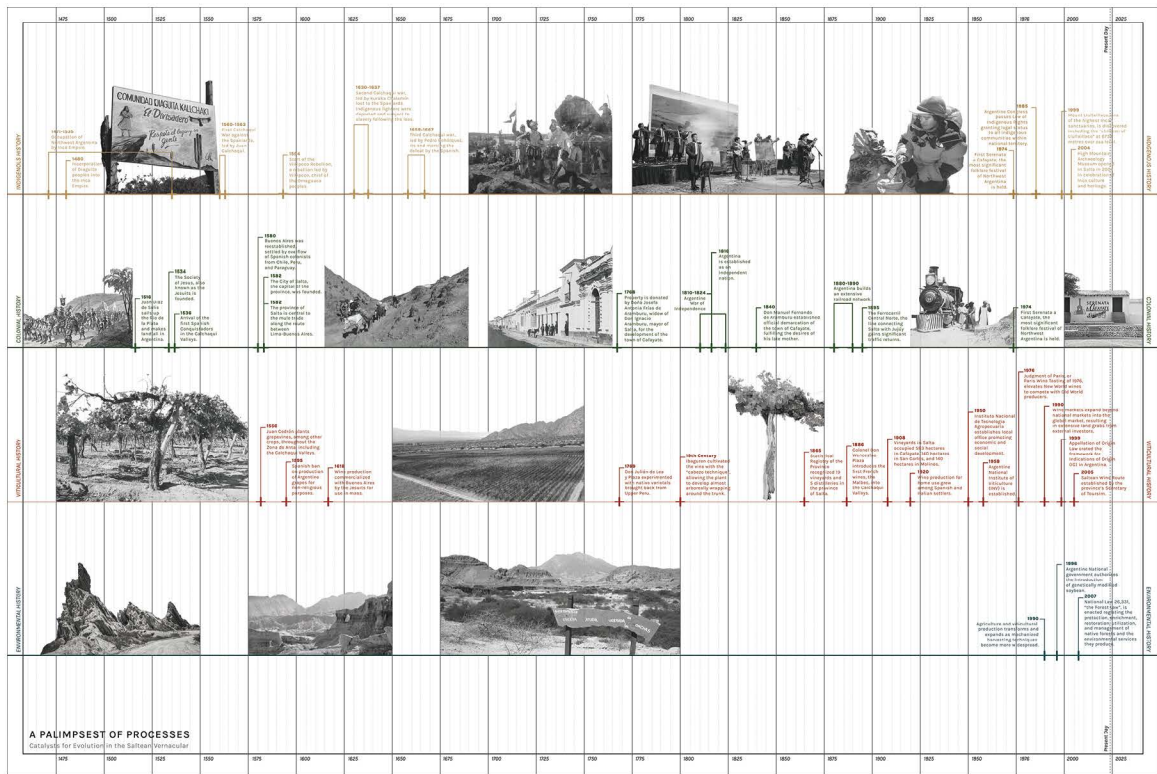
Masters Thesis +  
Advised by: Anita Berrizbeitia +

Cafayate, Salta, Argentina +

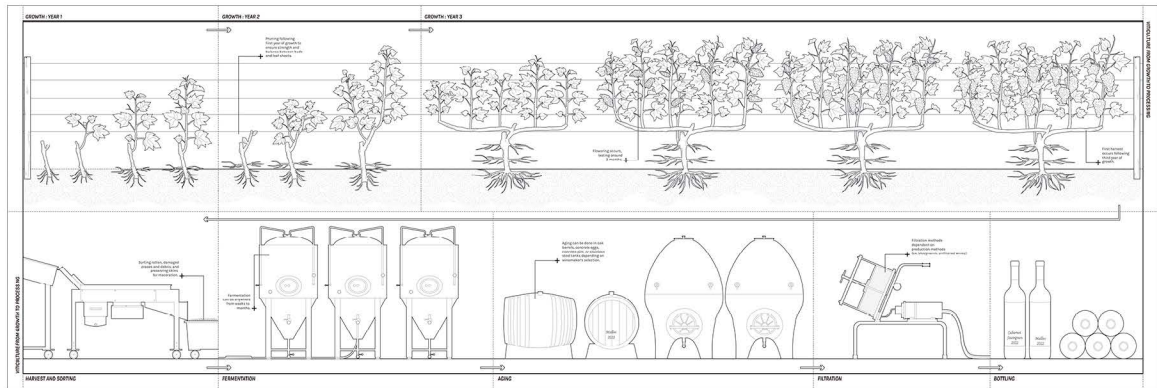
Traversing the high-altitude landscapes of Northwest Argentina's Calchaquí Valleys, Salta's Ruta del Vino weaves through a palimpsest of indigenous, colonial, and viticultural histories, forming a series of extensive landscapes transformed by centuries of human inhabitation. Despite emerging from parallel histories, the viticulture of the region remains independent of indigenous precedents, continuing to draw upon processes and methods that emerged with the grapevine at the time of the region's colonization while ignoring the local community's spiritual relationships to the landscapes they occupy. These independent landscape practices have resulted in the fragmented territory that exists today, occupied by patches of productive agricultural lands, forests, and a series of disjointed riparian corridors threatened by unprecedented impacts of climate change.

Un Folklore Vitivinicola envisions an alternate model through which we can begin decolonizing viticulture, interweaving mono-cultural vineyards with landscape practices of the region to re-establish greater territorial and social integration.

## SELECTED WORKS

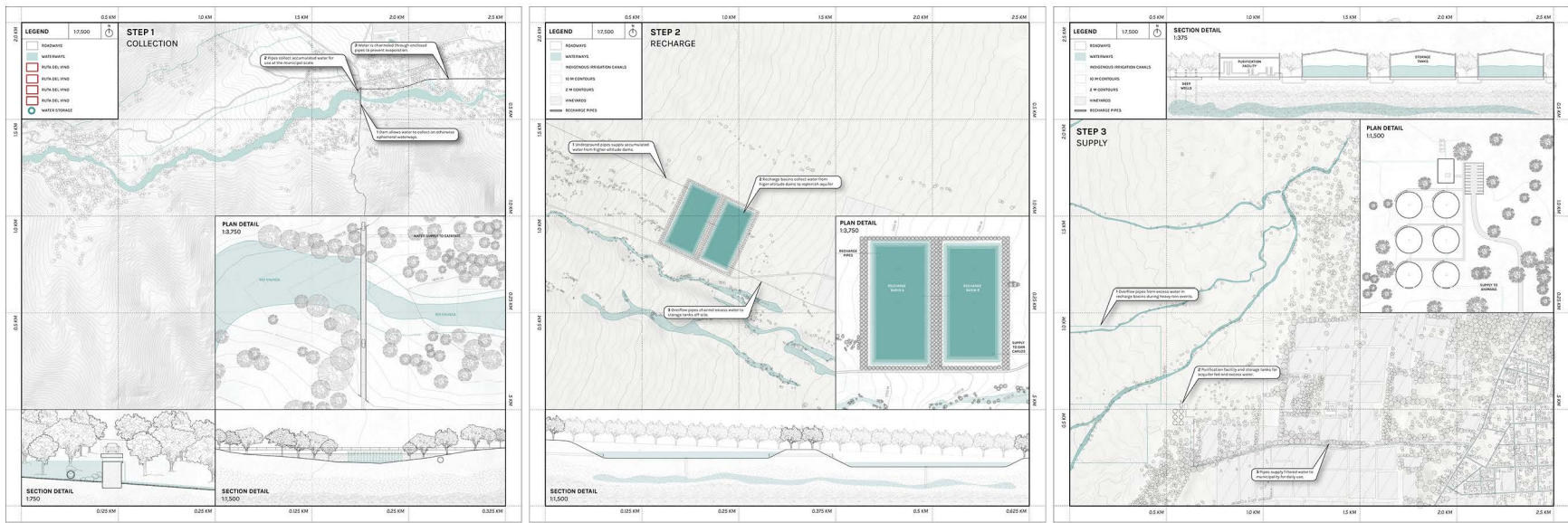


+ Layered Histories of the Calchaquí Valleys



+ Established Methodology of Viticulture and Wine Production

## ROCIO ALONSO

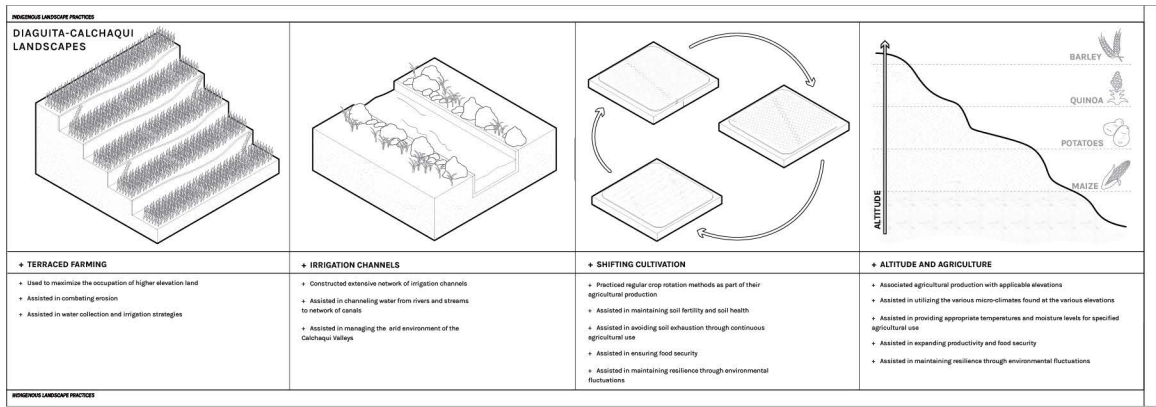


Water Collection Details +

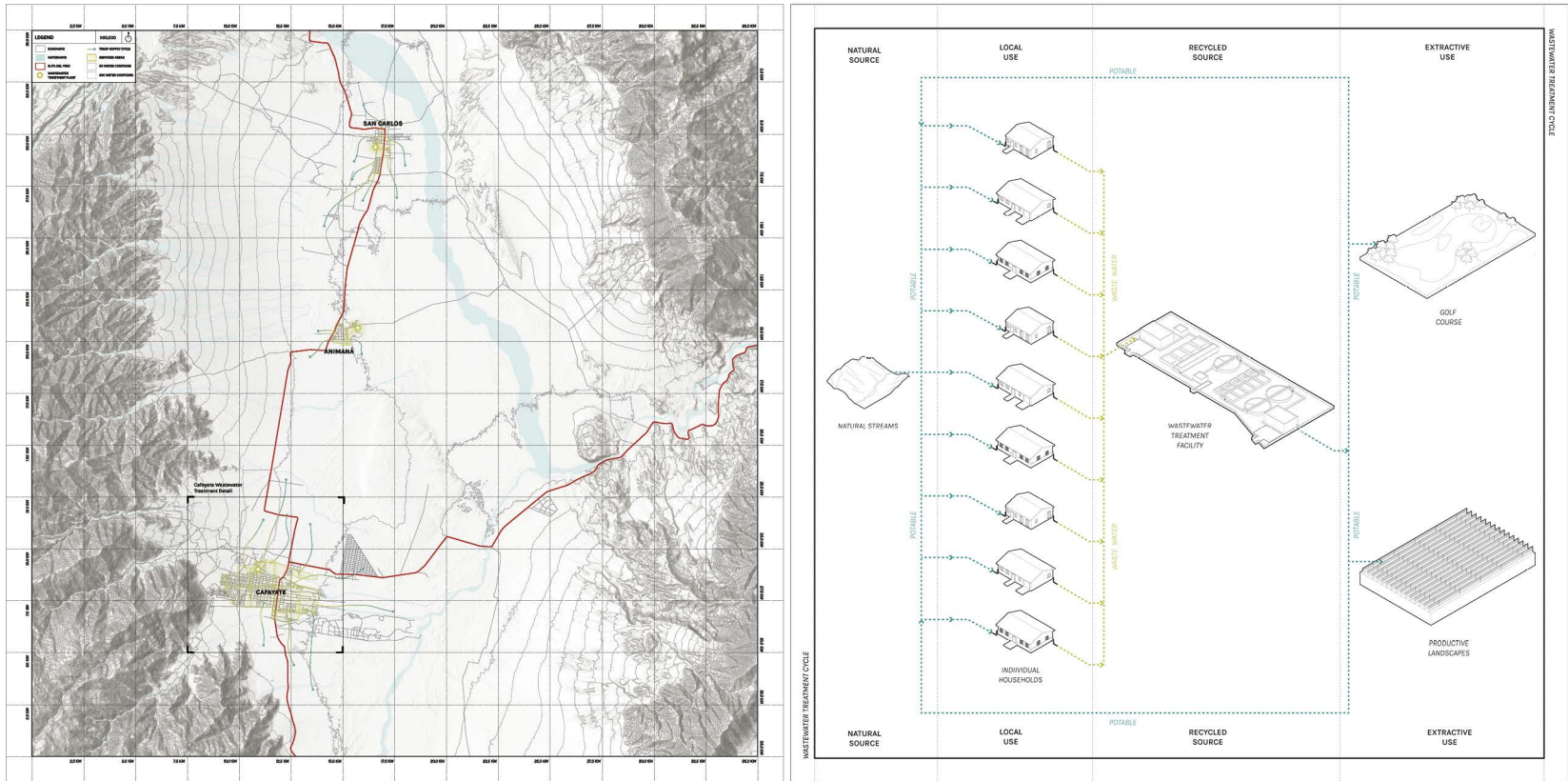


Collection Dam and Recharge Basin +





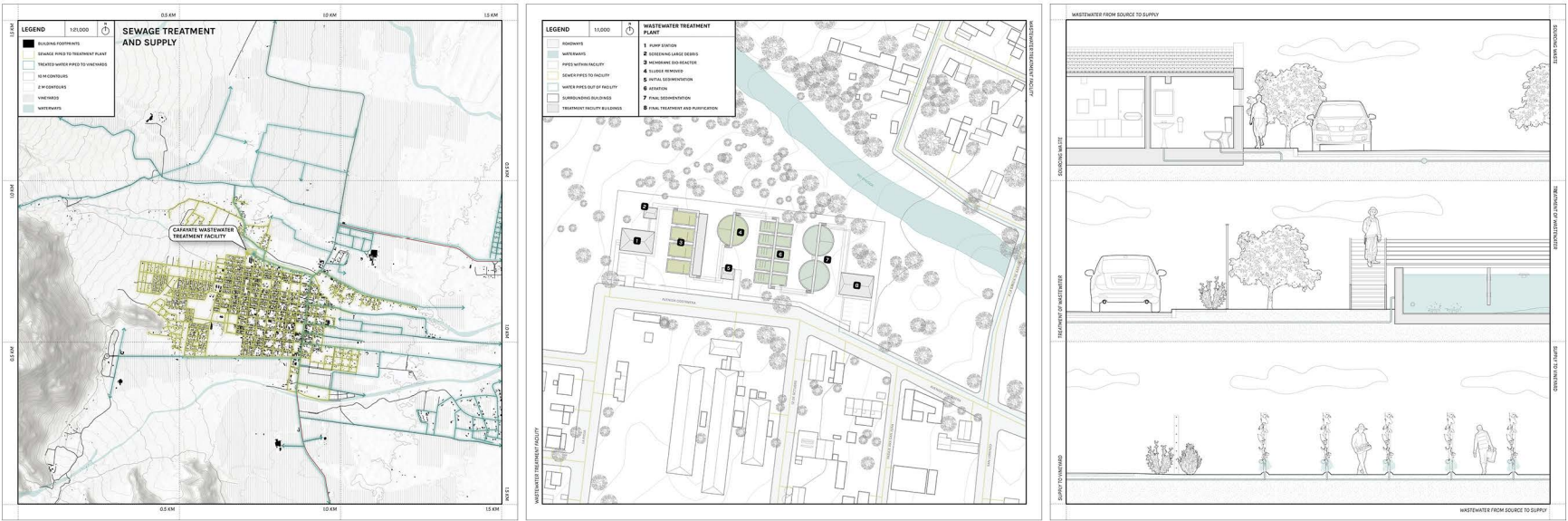
+ Indigenous Landscape Practices of the Diaguita-Calchaquí



+ Waste from Residence to Treatment

SELECTED WORKS

ROCIO ALONSO

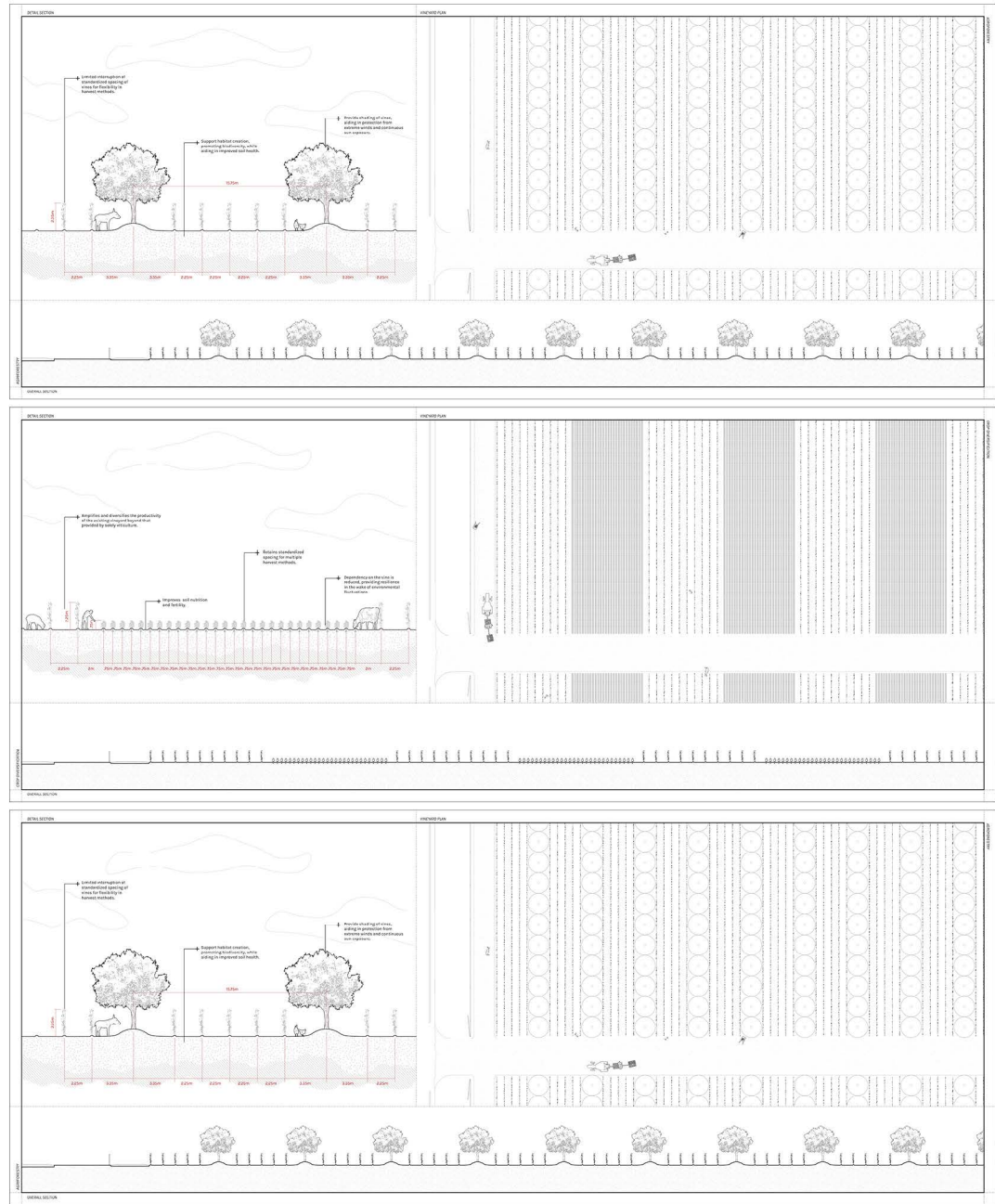


Wastewater Treatment Details +



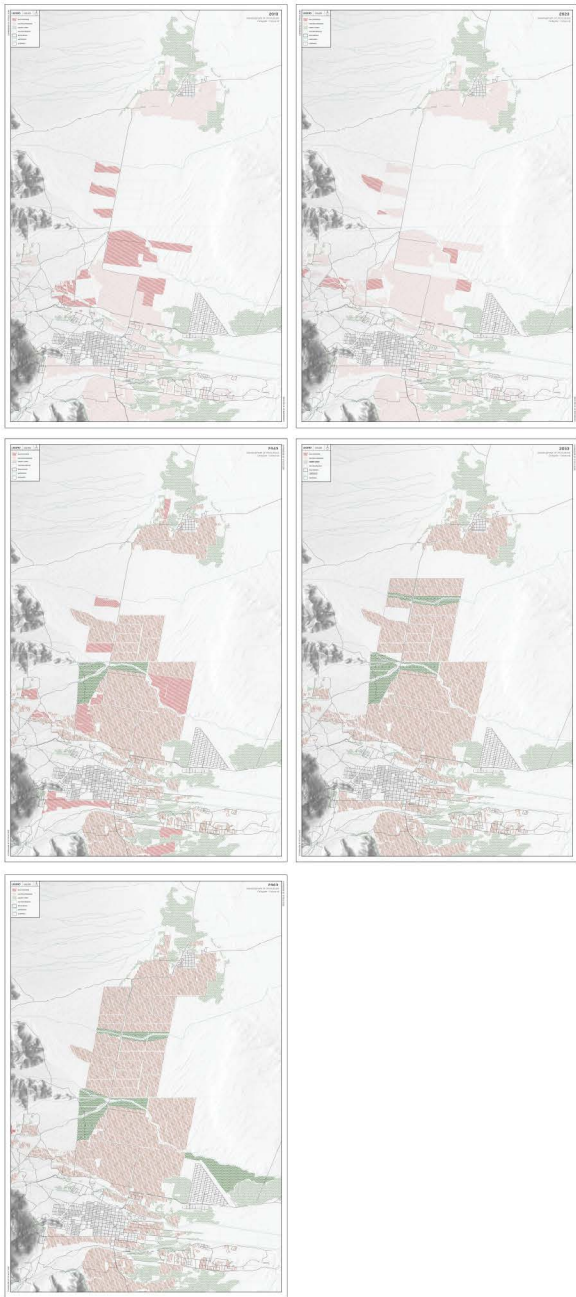
Waste from Residence to Treatment +





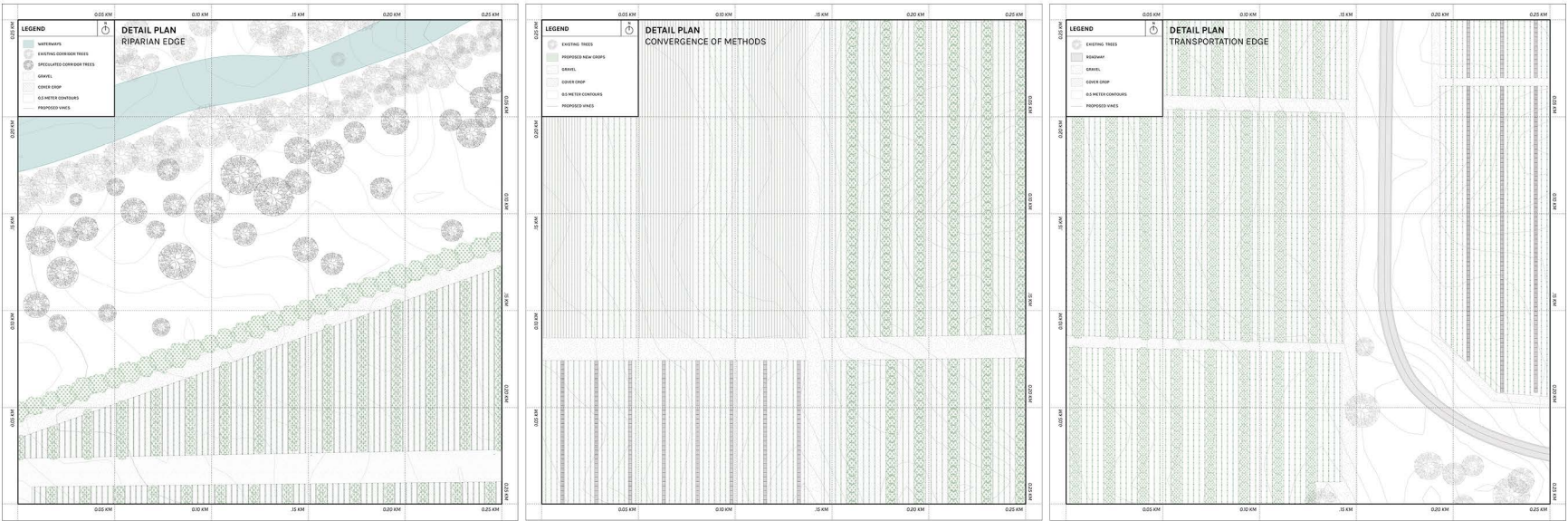
+ Waste from Residence to Treatment

SELECTED WORKS



+ Expanding Regional Connectivity 2023-63

ROCIO ALONSO



Vineyard Transformation Details +



Regenerative Strategies and Energy Production +

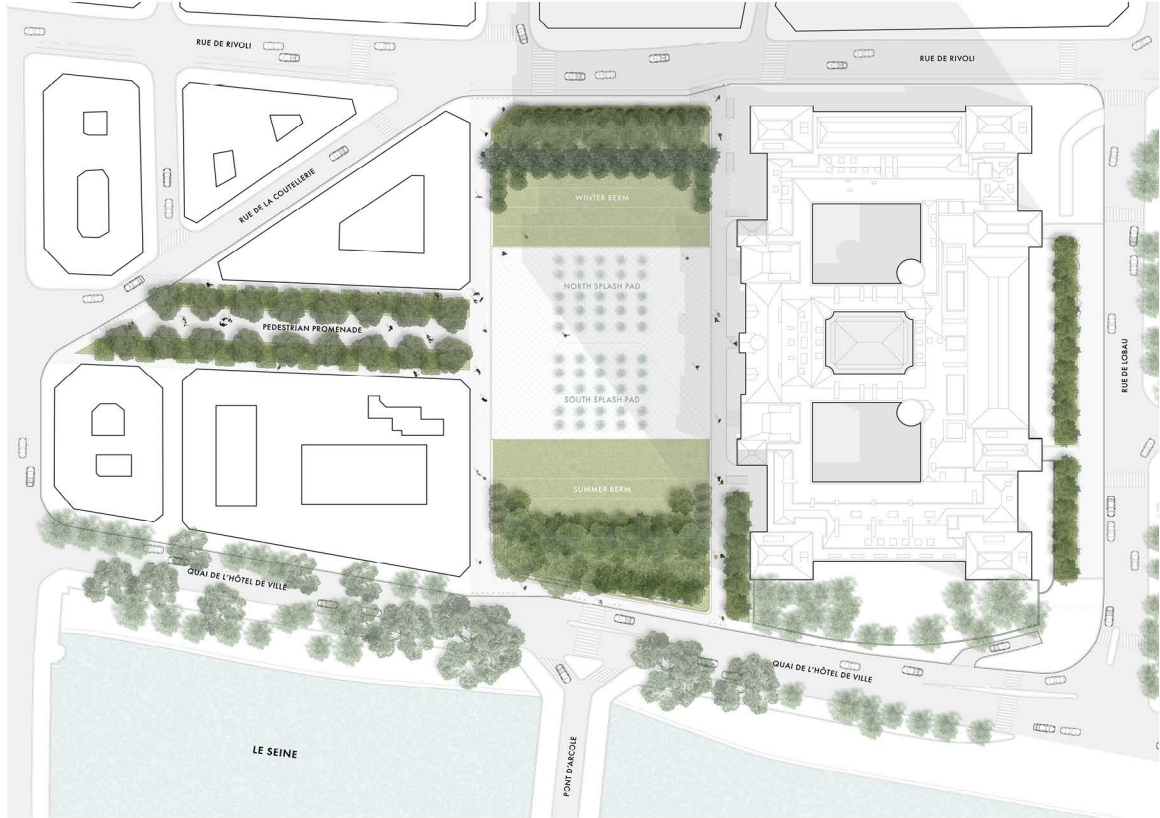


# 02 ANOTHER PARK ALONG THE SEINE

Option Studio +  
Instructed by: Bas Smets +  
  
Paris, France +

Another Park Along the Seine re-envisions Paris' plaza typologies in the wake of impending climate change, situated in the near future with a +2 degree C temperature increase. Existing as a pilot project site for the plaza typology, the Place de l'Hôtel de Ville exists in the center of the city, built into an existing "island of freshness" along the Seine, hosting a range of programs year-round while occurring within an axis of plazas connecting the Pompidou to the Pantheon. Simultaneously, this site has been selected as part of Mayor Hidalgo's sites identified as potential spaces for Urban Forests.

The proposed scheme acknowledges the historic and existing contextual relationships, while respecting the present-day uses for the plaza. Two berms build up the plaza, increasing permeability, vegetation, and canopy-cover, distinguished through their selected vegetation for uses driven by seasonality, coined the Winter and Summer berms. Vehicular traffic is rerouted, envisioning an extended pedestrian promenade working cohesively with the central plaza to support continued dynamic use of the plaza. In this scheme, the Place de l'Hôtel de Ville can be anything from a splash pad and lawns, a beach volleyball court, a concert or event space, an ice skating rink, a farmer's market, or a Winter Christmas market.



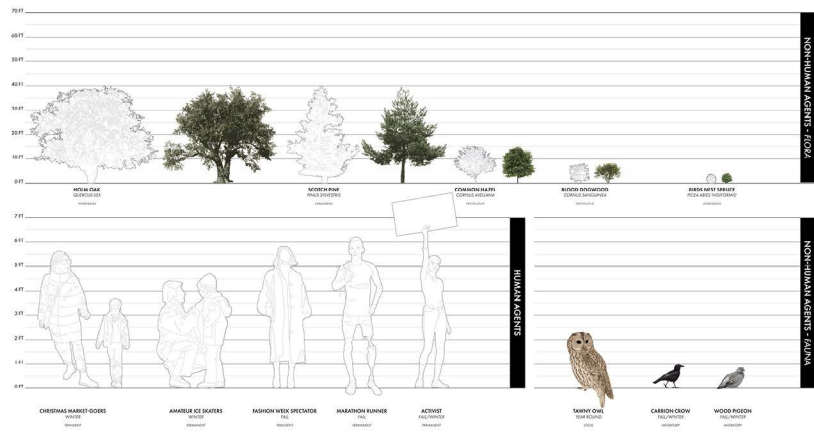
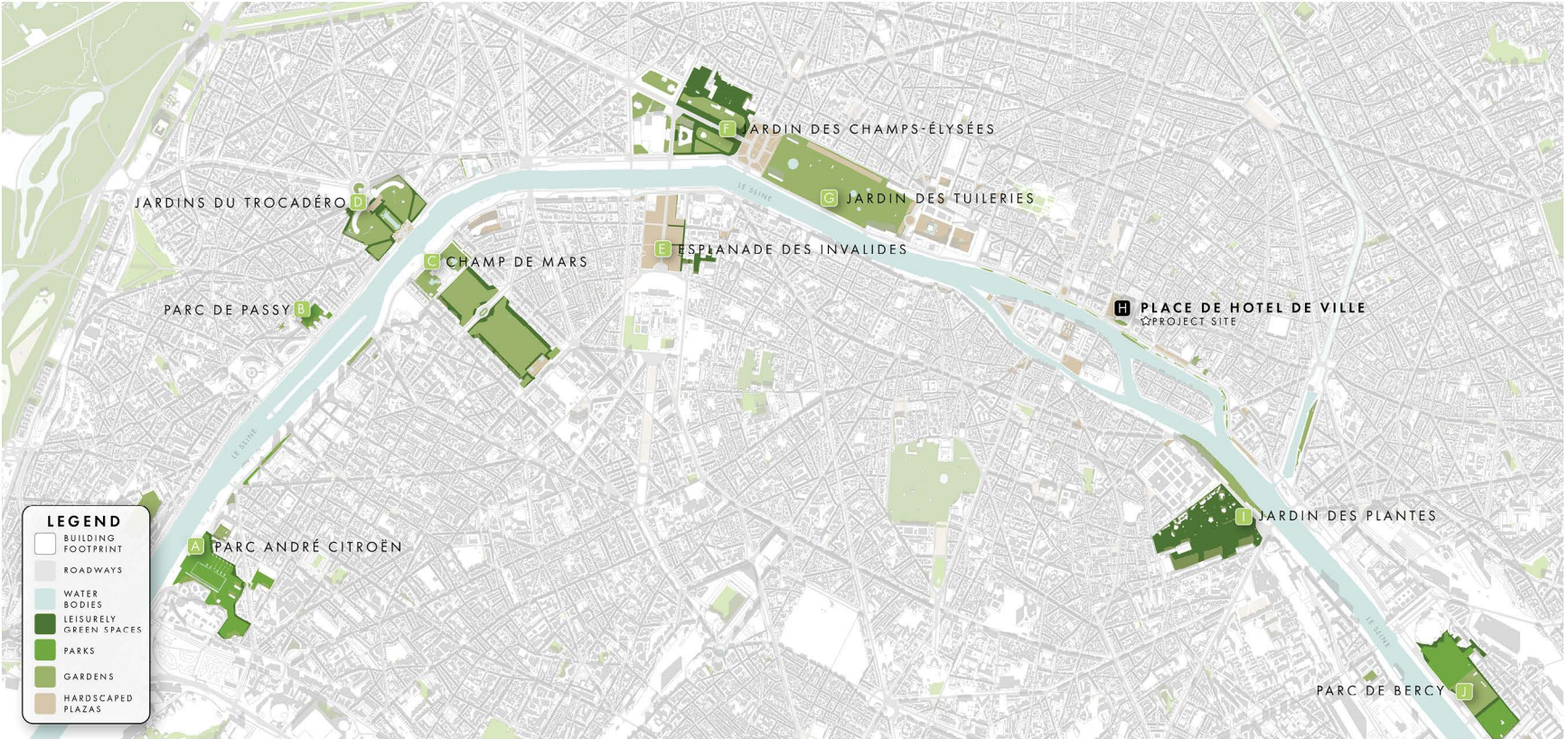
+ Proposed Site Plan



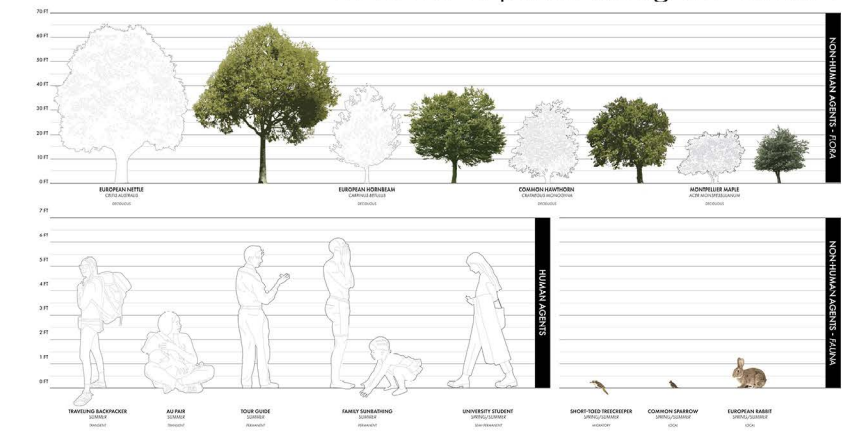
+ Proposed Symmetrical Section

## SELECTED WORKS

## ROCIO ALONSO



Network of parks along the Seine +



Seasonal Vegetation Palettes +





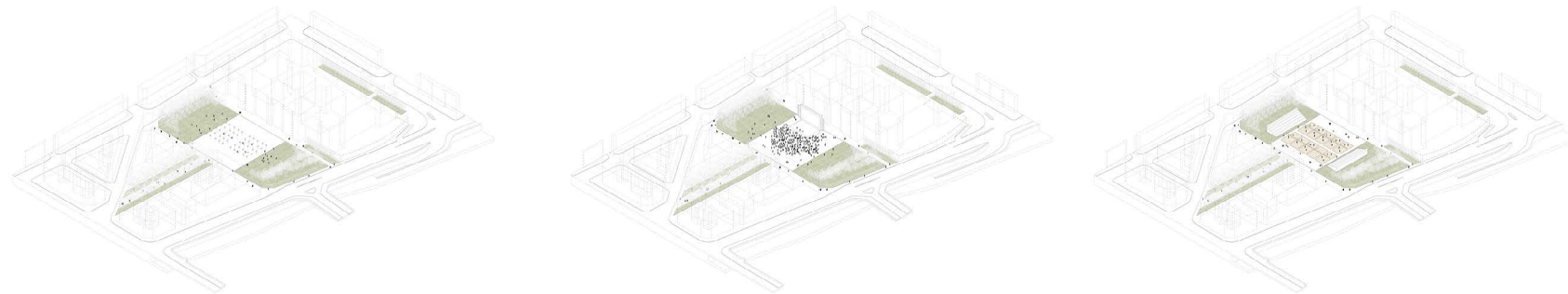
+ Northern Vegetated Winter Berm

SELECTED WORKS

ROCIO ALONSO



Summer Activation of the Plaza +

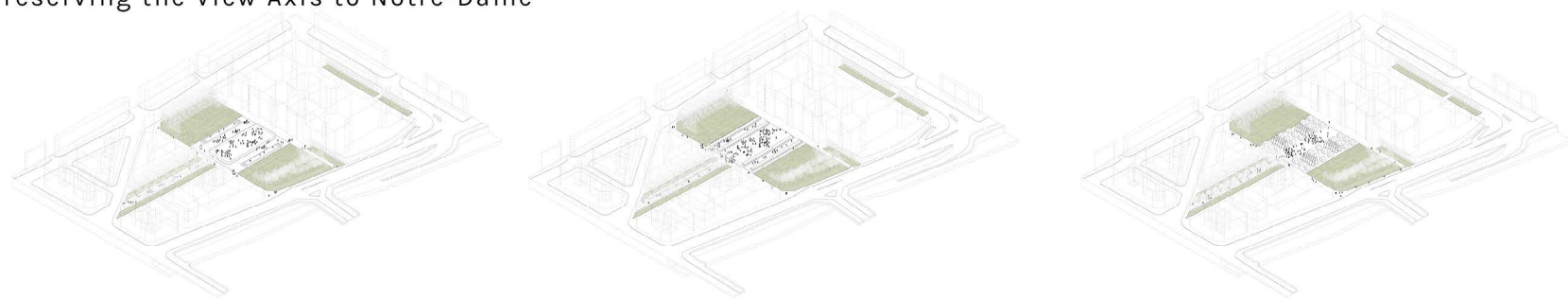


Flexibility in Plaza Programming in Spring/Summer +





+ Preserving the View Axis to Notre-Dame



+ Flexibility in Plaza Programming in Fall/Winter

## SELECTED WORKS

## ROCIO ALONSO



Southern Vegetated Summer Berm +



# 03 PAIRING THE PAISAJES

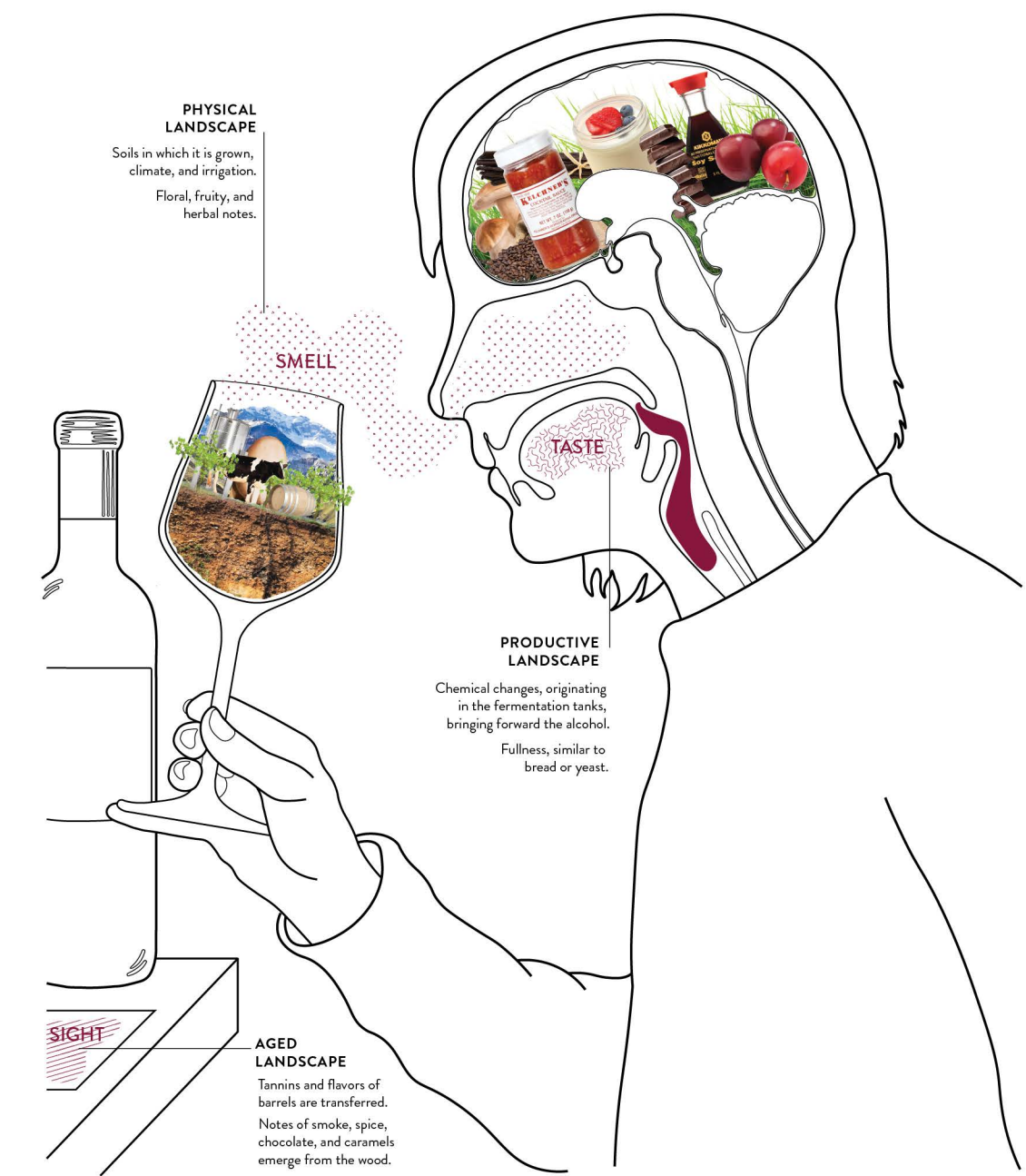
Penny White Project Fund +  
Collaboration with: Elaine Zmuda +  
Advisor: Montserrat Bonvehi Rosich +

## Wine Regions of Argentina +

Argentina's wine history spans centuries, deeply intertwined with the country's battles with colonialism, economic uncertainty, globalization, and climate change. A country rich and diverse in culture and landscapes hosts an equally rich and diverse collection of wine producing regions. Pairing the Paisajes challenges the traditional definition of terroir, proposing a union of landscape and consumption in efforts to consider the complex effects of the colonization, extreme landscapes, transplantation of foreign practices, and economic shifts that have influenced Argentina's wine-producing regions.

Pairing the Paisajes cuts a longitudinal transect of the country, developed through photographic studies, mapping exercises, field observations, and conversations with locals, winemakers, and laborers in the regions of Salta, Mendoza, and Neuquén. Despite working toward the common goal of wine production, the cultural significance, commerciality, obstacles, and local identities differ between regions. Pairing the Paisajes provides deeper profiles of these regions and their terroirs, acknowledging the diverse and rich environments that surround them.

(Pairing the Paisajes serves as the initial research and exploration for an ongoing Thesis exploring relationships between indigeneity and coloniality in Saltean viticulture, titled *Un Folklore Vitivinícola*.)



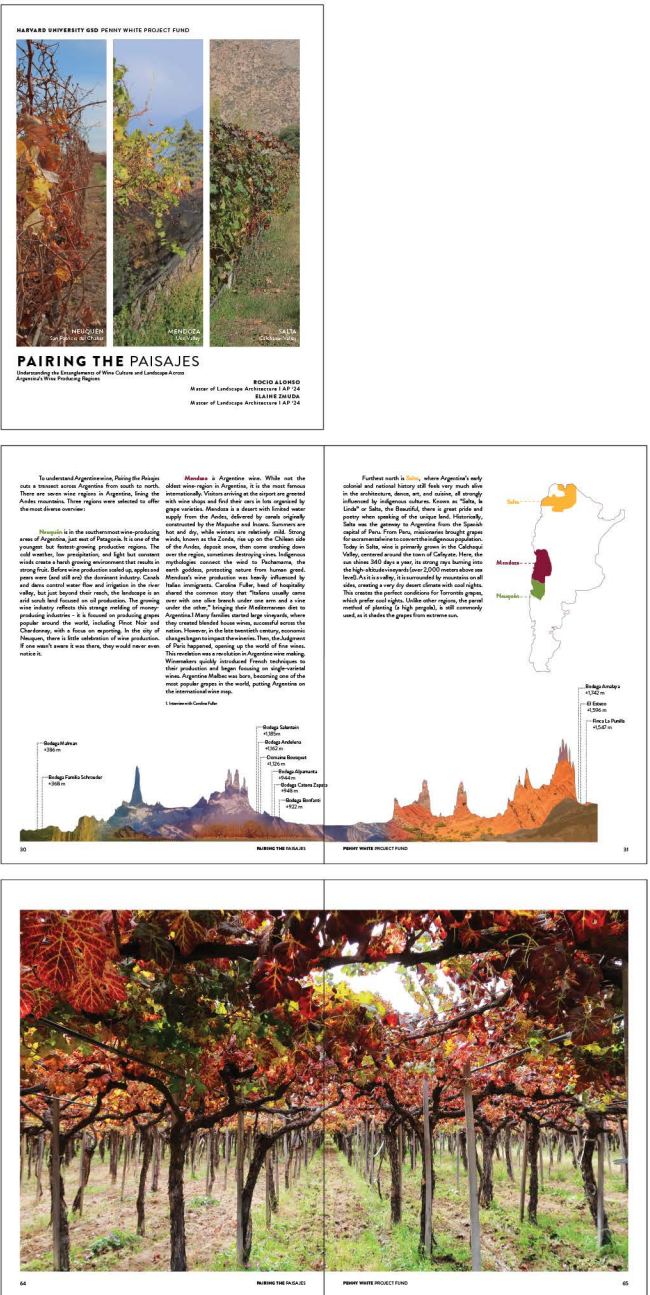
+ Anatomy of a Tasting

## SELECTED WORKS

## ROCIO ALONSO



Salta Tasting Vignette +



Penny White Project Report +







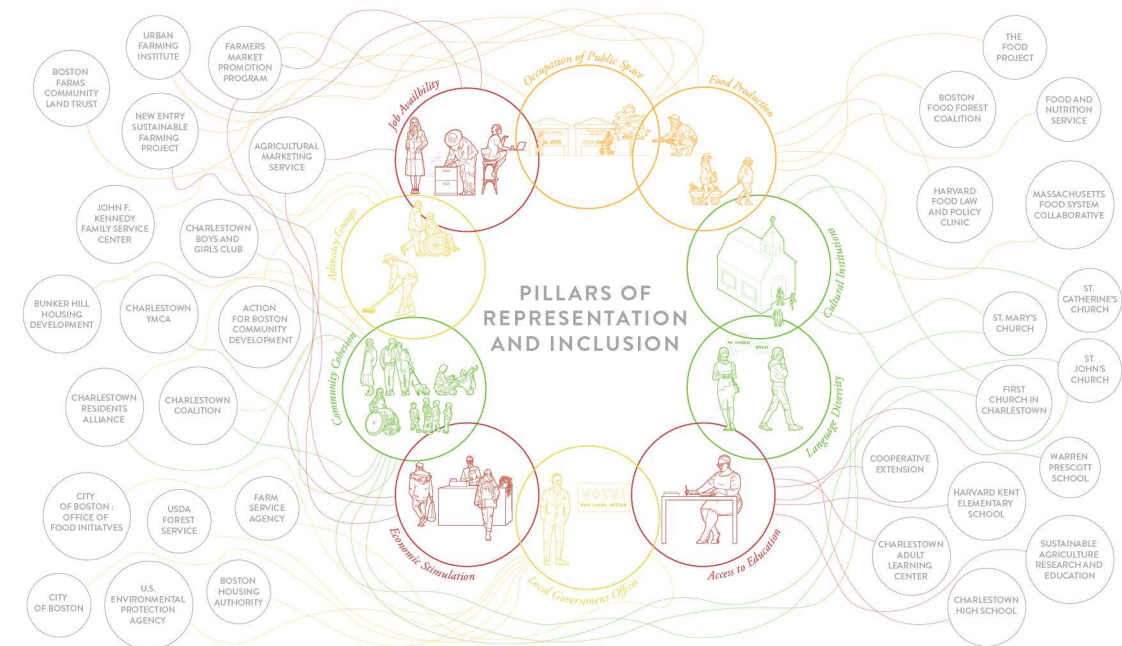
# 04 CULTURE FARM

Core IV Studio +  
Instructed by: Tomas Folch +

Charlestown, Boston, MA +

The urban fabric of Charlestown caters to a narrow demographic, expressing patriotism and pride directed toward only a portion of its diverse community. Public sights and sounds are representative of the affluent, primarily white non-hispanic residents and histories of the community through countless flags, patriotic church bells, and historical monuments. These symbols ignore the richer, more diverse makeup of Charlestown's people. Simultaneously, the neighborhood of Charlestown faces current and future climate impacts surrounding flooding, sea level rise, and heat island effect, disproportionately impacting low-income, minority populations of Charlestown, furthering the gaps present in the community.

In addition to finding strategies to respond to the urgent climate needs, Charlestown must build community cohesion and empowerment, improving the representation and sense of belonging of all members of the community. Drawing upon examples found in WWII Victory Gardens, Pandemic Gardens nationwide, and disaster resilience gardens post-Hurricane Katrina, this project proposes to use urban agriculture to foster community cohesion, reduce existing tensions, and foster social integration between these otherwise segregated community groups.



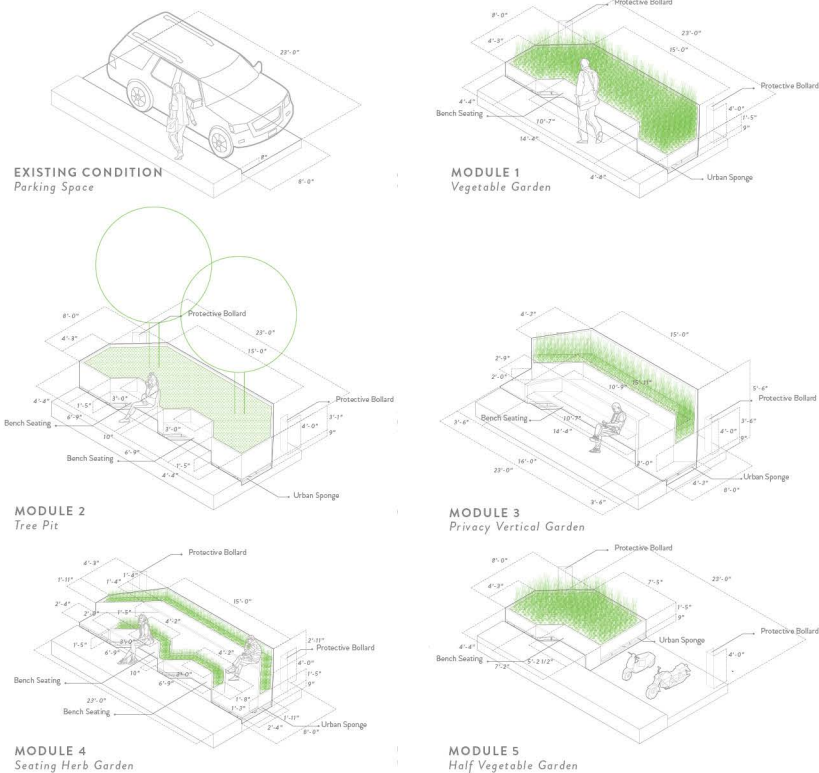
+ Proposed Site Plan



+ Urban Farming Cooperative

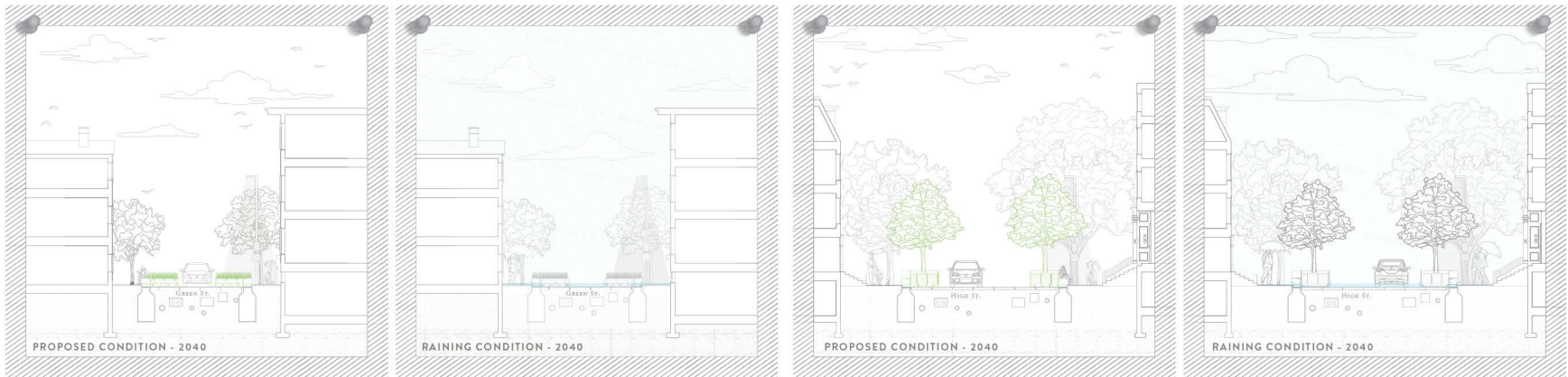
## SELECTED WORKS

## ROCIO ALONSO



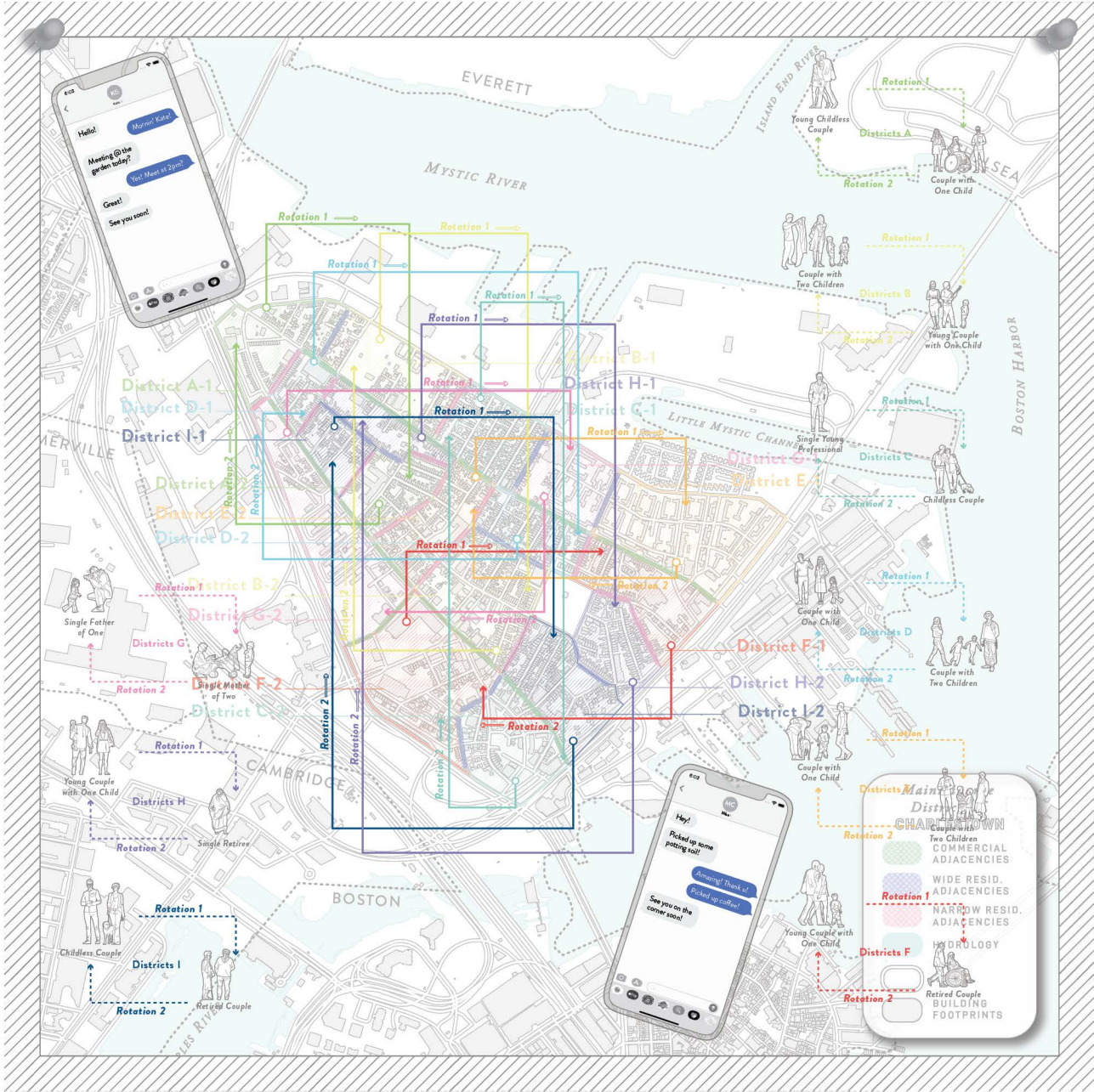
DETAIL	FUNCTION	SEASONALITY											
		WATER RETENTION	WATER DISTRIBUTION	IMPROVED COVER	PUBLIC SPACE	PRIVATE SPACE	PRODUCT GARDENS	SCREENING	COOLING	COMMUNITY	ENVIRONMENT	JANUARY	FEBRUARY
Module 1: Vegetable Garden	Expanded Clay Aggregate, Small Branches and Sticks, Plant Waste, Compost Topsoil												
Module 2: Tree Pit	Expanded Clay Aggregate, Small Branches and Sticks, Plant Waste, Compost Topsoil												
Module 3: Privacy Vertical Garden	Expanded Clay Aggregate, Small Branches and Sticks, Plant Waste, Compost Topsoil												
Module 4: Seating Herb Garden	Expanded Clay Aggregate, Small Branches and Sticks, Plant Waste, Compost Topsoil												
Module 5: Half Vegetable Garden	Expanded Clay Aggregate, Small Branches and Sticks, Plant Waste, Compost Topsoil												

Modules of Urban Agriculture +



Performance of Modules +

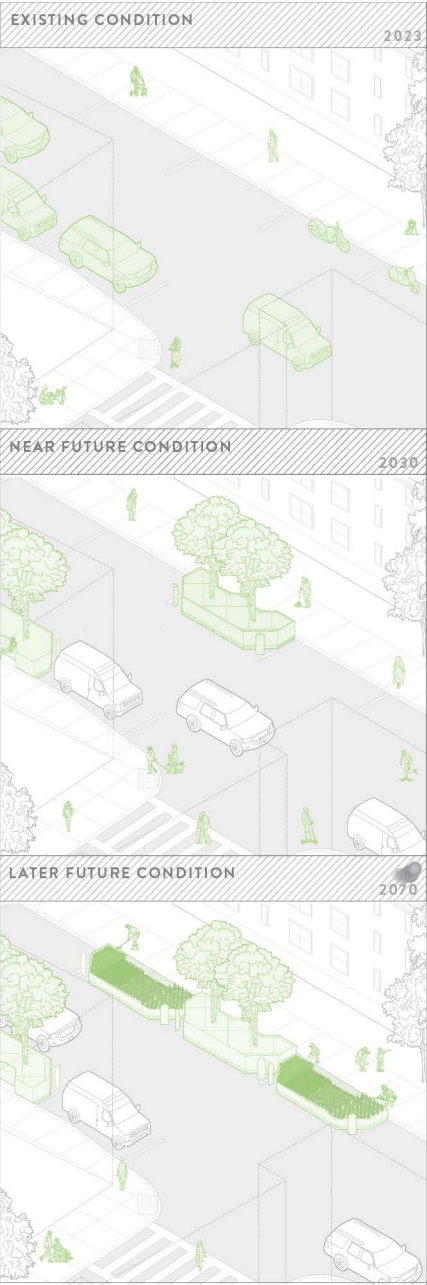




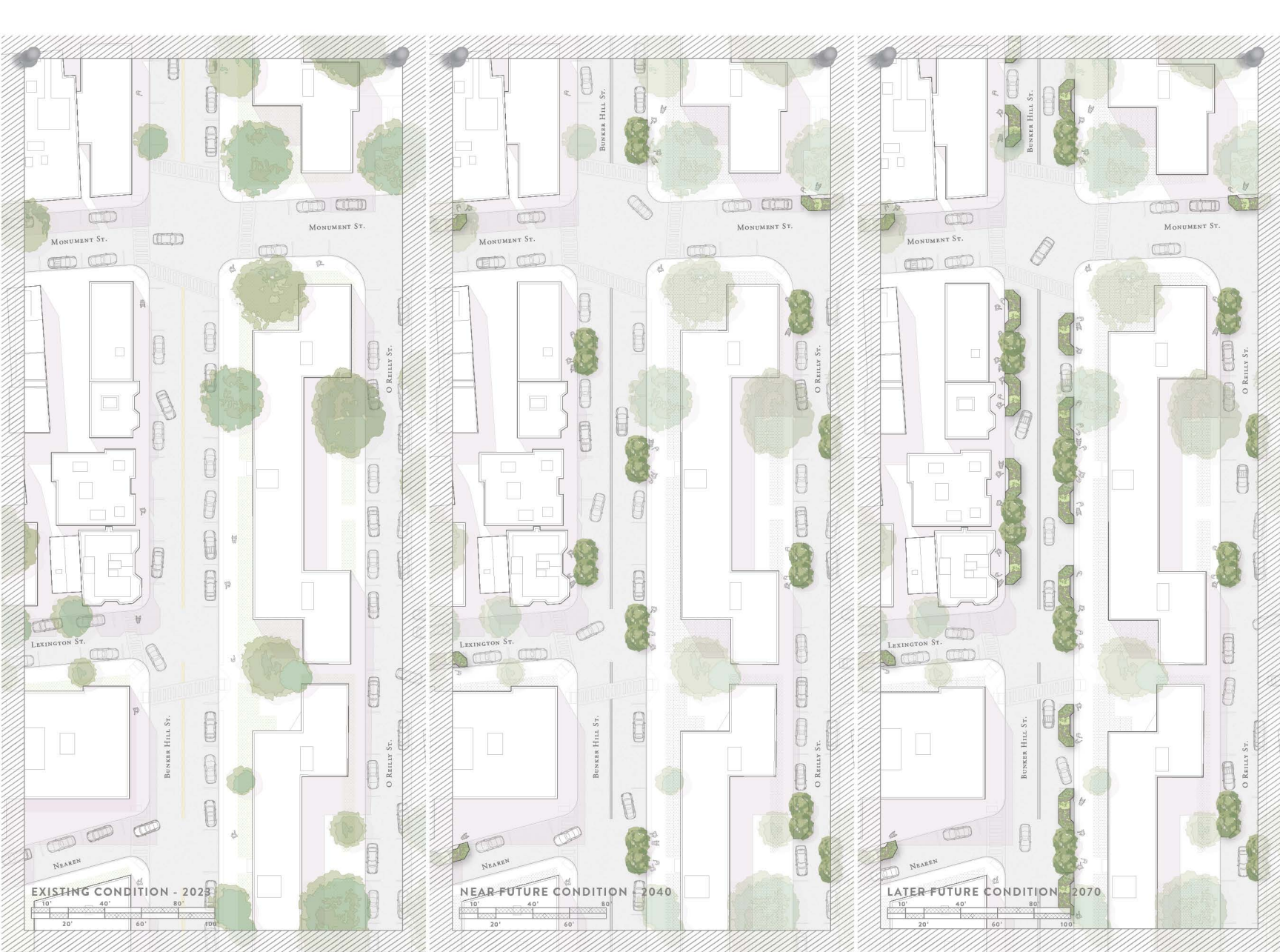
+ Establishing Relationships

SELECTED WORKS

ROCIO ALONSO



+ Transformation of a Street



Bunker Hill St. Now, Near, and Later +



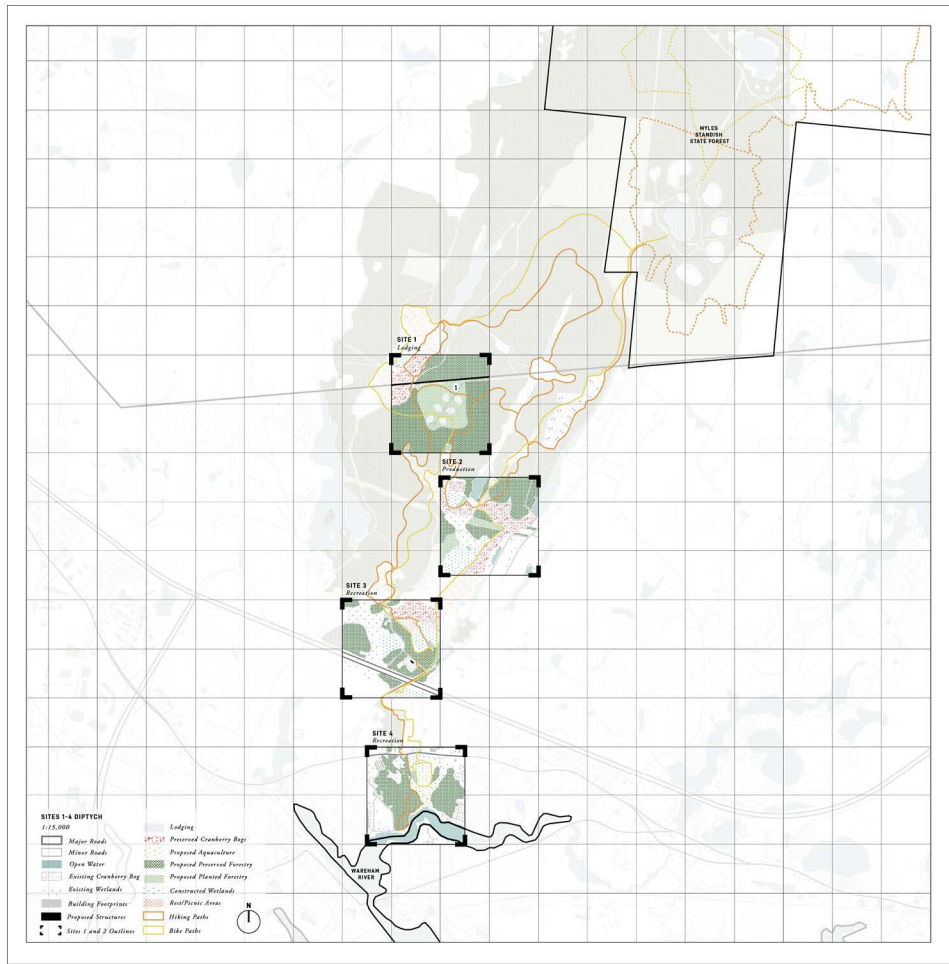
# 05 THE BOG BELT

Core III Studio +  
Instructed by: Amy Whitesides +

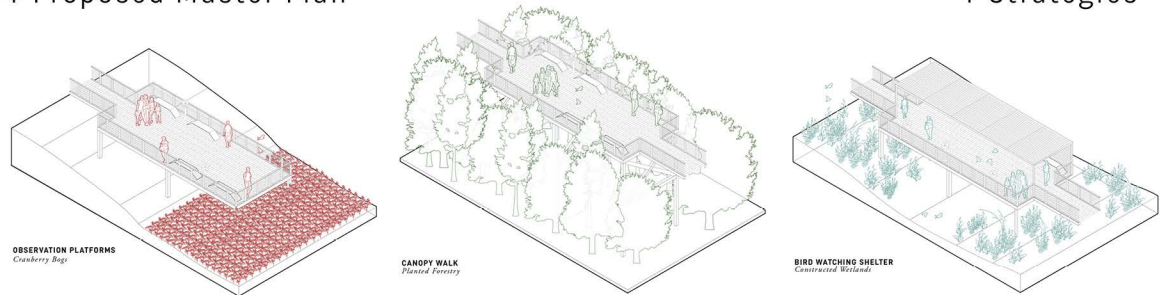
Wareham, Massachusetts +

The cranberry economy is critical in Wareham, supporting tourism of the town in the way of bog tours and cranberry festivals while being tangentially related to a greater web of tourism infrastructure of airports, beaches, hotels, and restaurants. Impending sea level rise and the increase in out-of-state competition within the cranberry industry threaten the livelihood of Wareham as a community so dependent on cranberry farming. While essential to the culture of the town, cranberry tourism alone is not sustainable as a long-term economy. This project aims to diversify labor and tourism opportunities while providing an avenue through which the cranberry industry can remain in Wareham.

The Bog Belt is proposed as a form of agrotourism embed into the existing infrastructure of cranberry farming, hosting a range of recreational amenities and lodging connecting the Myles Standish State Forest and the Wareham River while promoting year-round tourism and labor opportunities. This project aims to provide an avenue through which the cranberry industry can remain in Wareham.

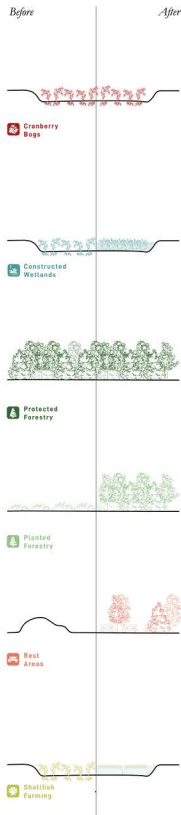


+ Proposed Master Plan



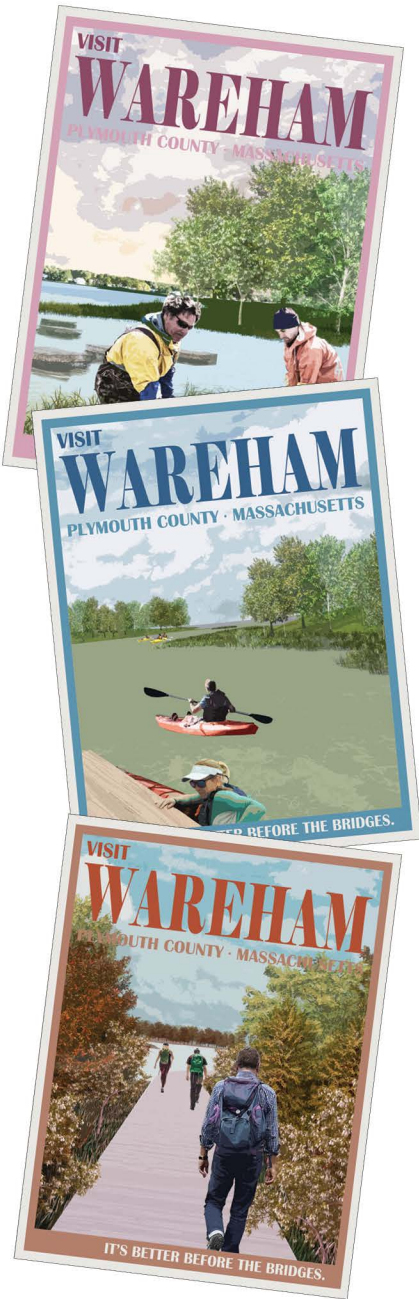
+ Moments of Pause Structures

## SELECTED WORKS

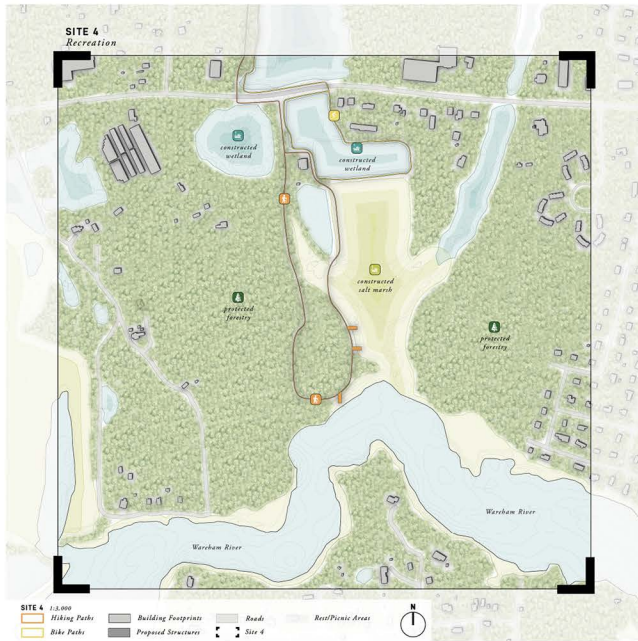
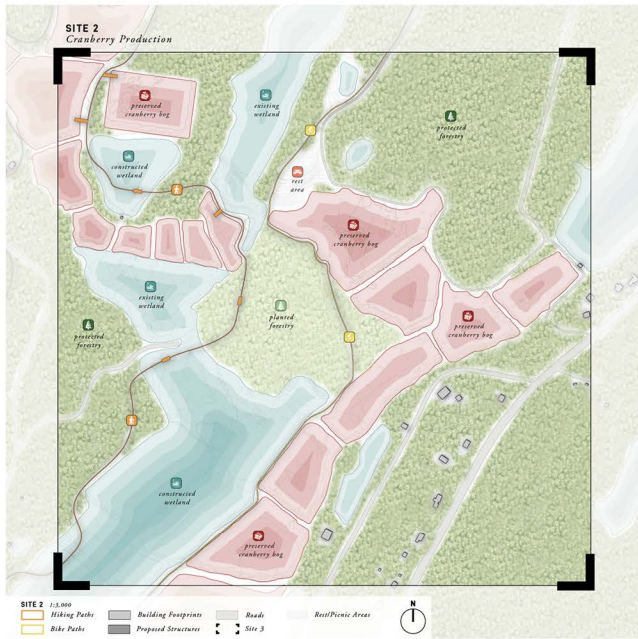
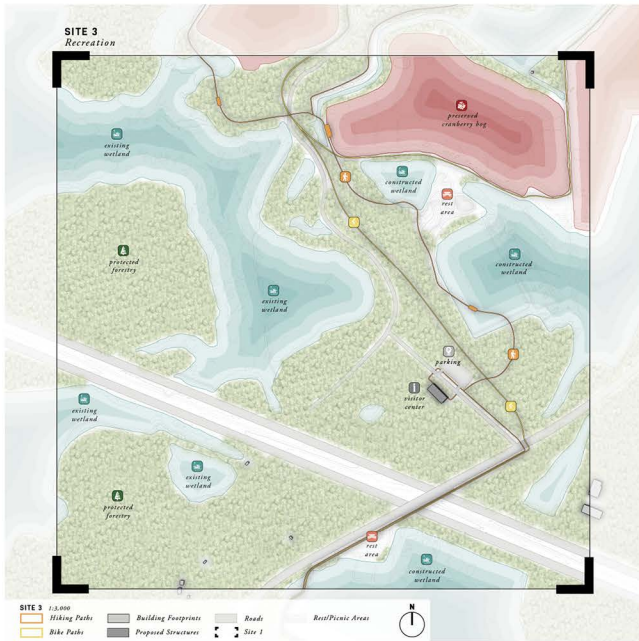
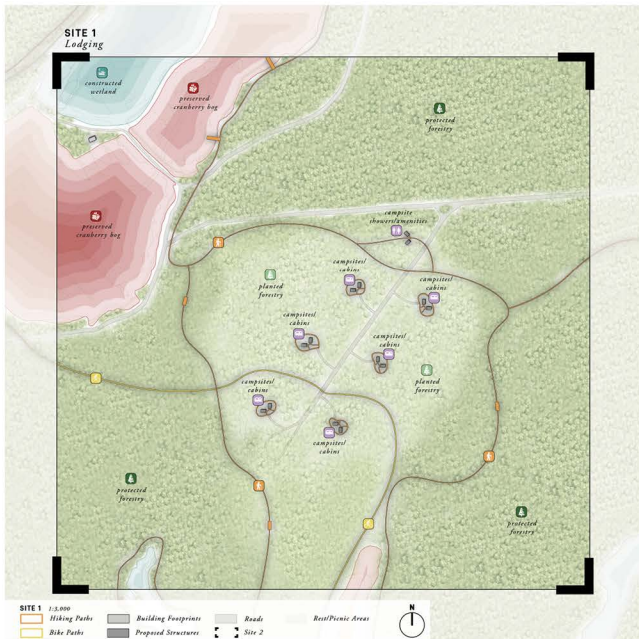


+ Strategies

## ROCIO ALONSO



Promotional Vignettes +

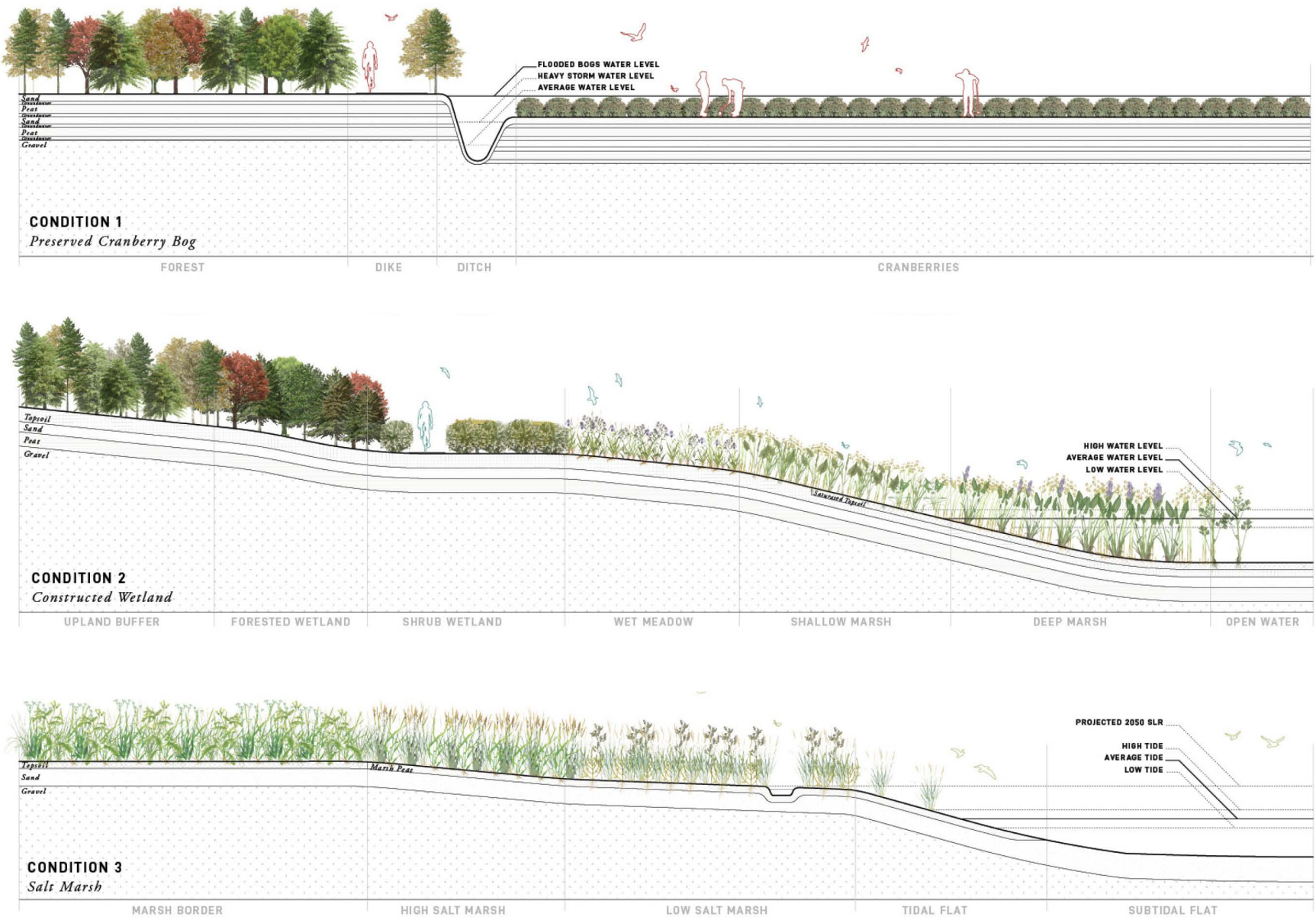


Sites of Change +



SELECTED WORKS

ROCIO ALONSO



+ Proposed Topography Changes



Plant Species +



Postcard Vignettes +



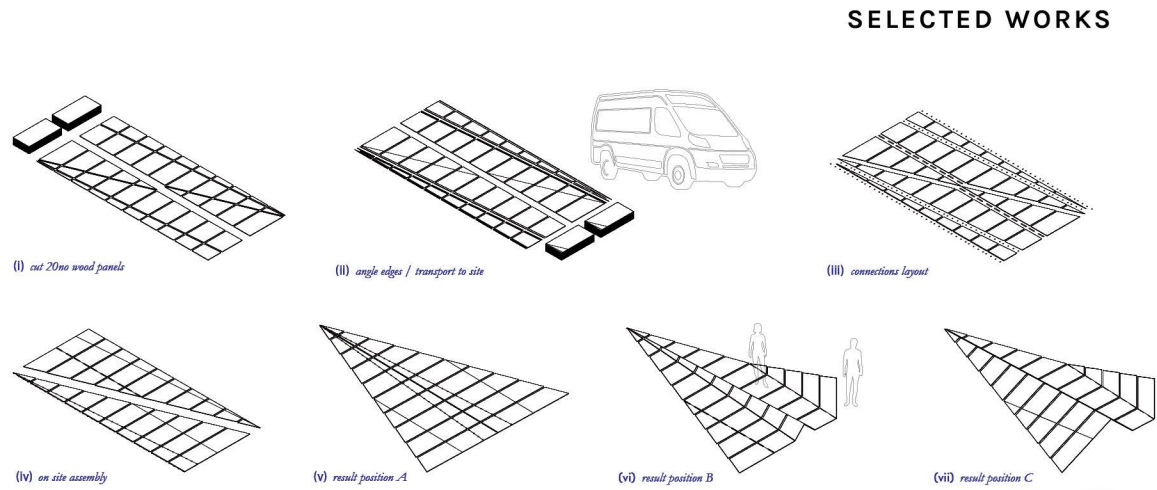
# 06 LET'S MEET AT THE PLANE!

Concentrico 09 Competition +  
Collaboration with: Lucas Dobbin +

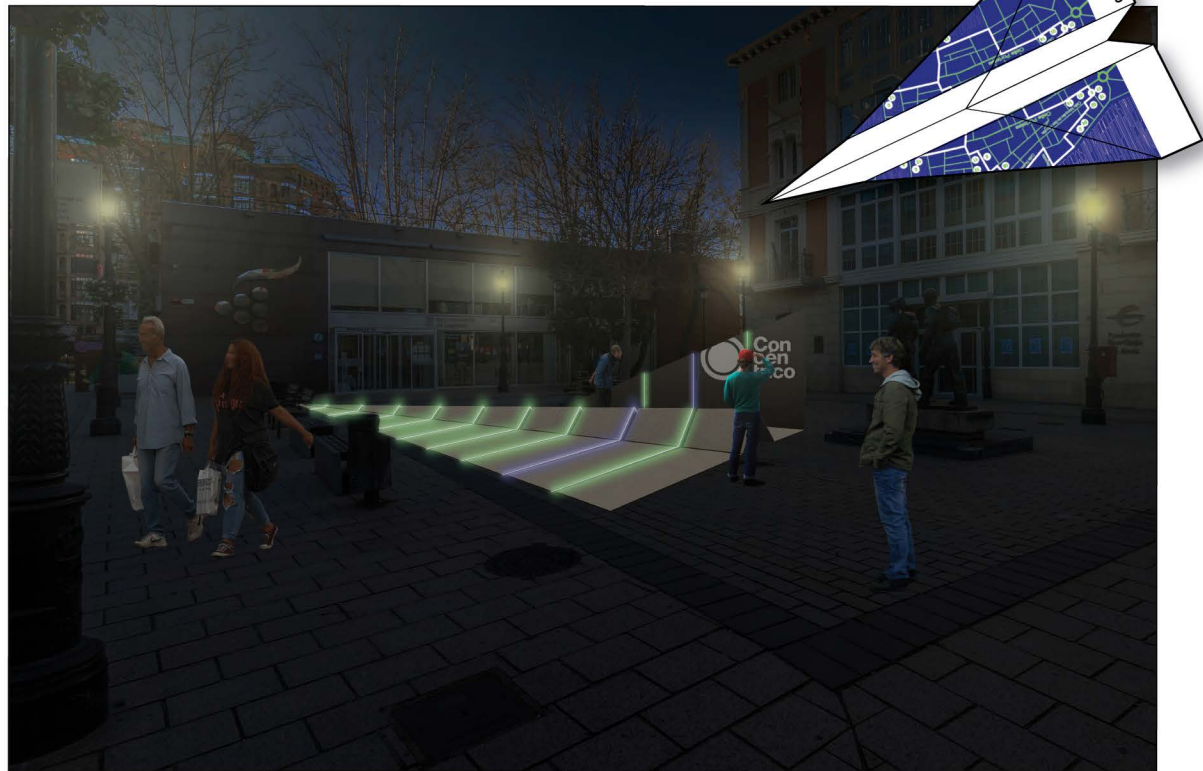
Logroño, Spain +

The simplicity of a paper plane begins in childhood, being the first object we learn to create from a singular sheet of paper. The paper plane exemplifies the iterative process of trial and error, allowing for experimentation and design with the most bare of tools, our hands. In its simplest form, the paper plane is the epitome of ephemerality, gliding through the air for seconds before landing with unintentional bends and creases.

Let's Meet at the Plane! draws upon this concept of primitive design, scaling up the paper plane we once held in our hands for experience and manipulation from an entirely different perspective. The folds and creases we once generated with our hands become larger than life, an ability to step through and into the creation our young selves once imagined. To continue this circular practice of creation, Let's Meet at the Plane brings festival-goers the opportunity to create their own paper planes from Concentrico's own festival map, with instructions to create the same object that inspired this pavilion or alternatively to dare to embark on their own design.

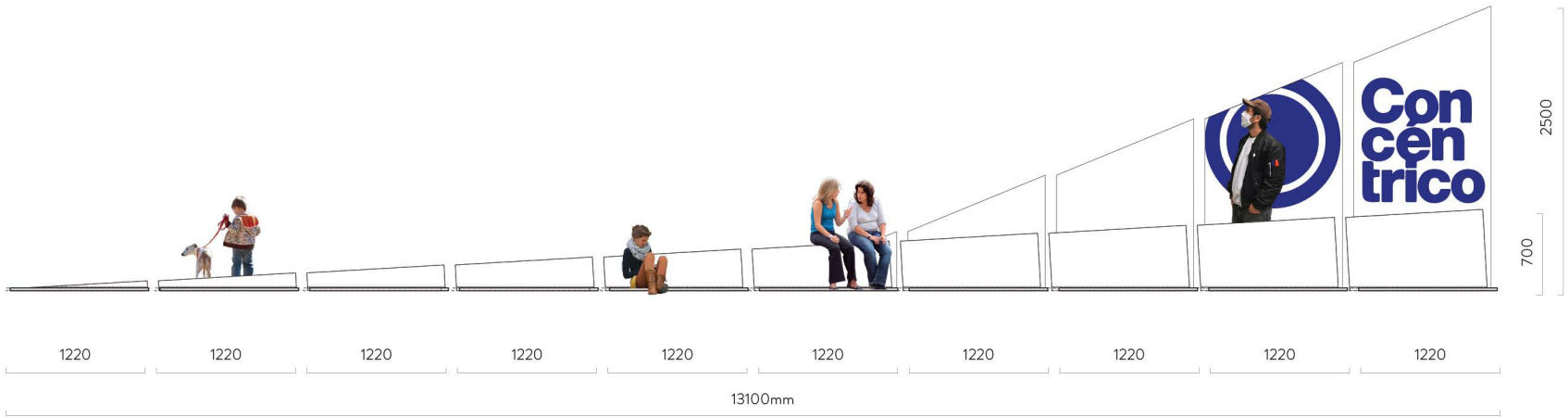
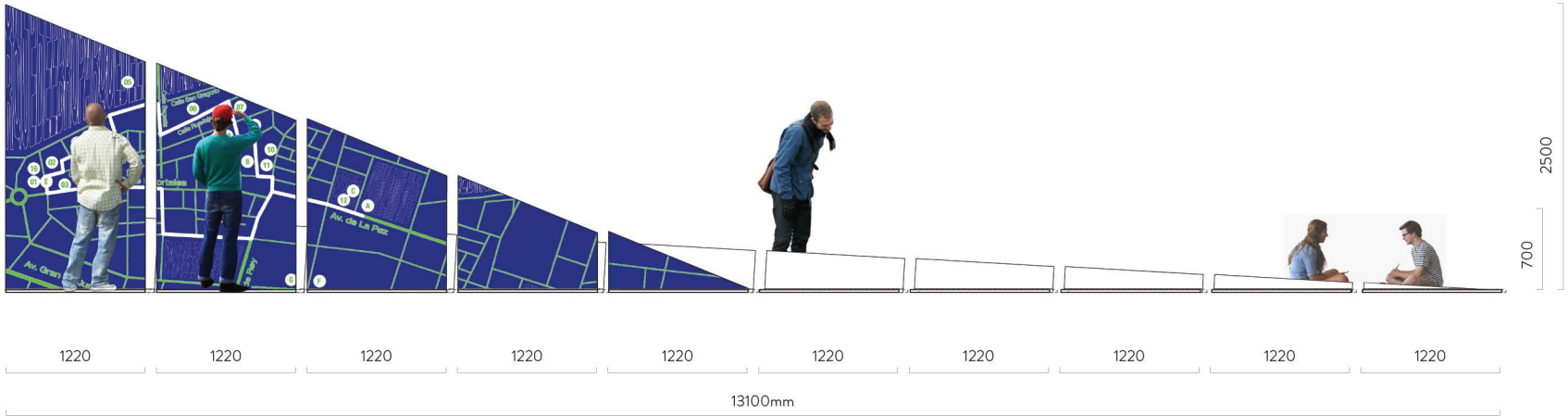


## + Proposed Transport and Assembly

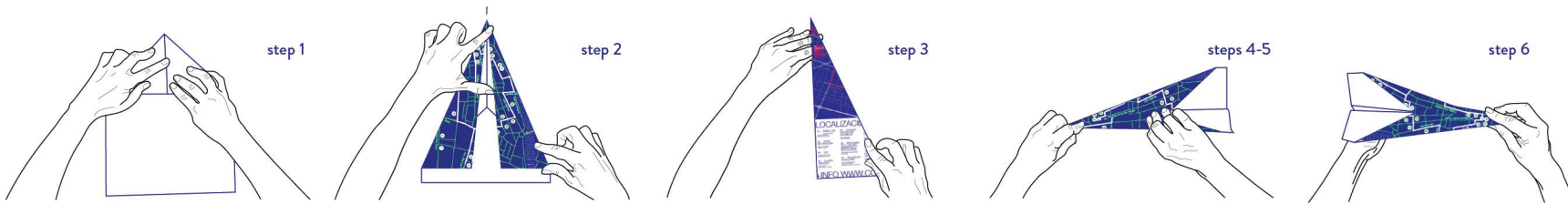


## + Nighttime Activation of Installation

## ROCIO ALONSO



## Festival-goer Interaction with Installation +



## Paper Plane of Festival Program +



# 07 MODULAR GREEN

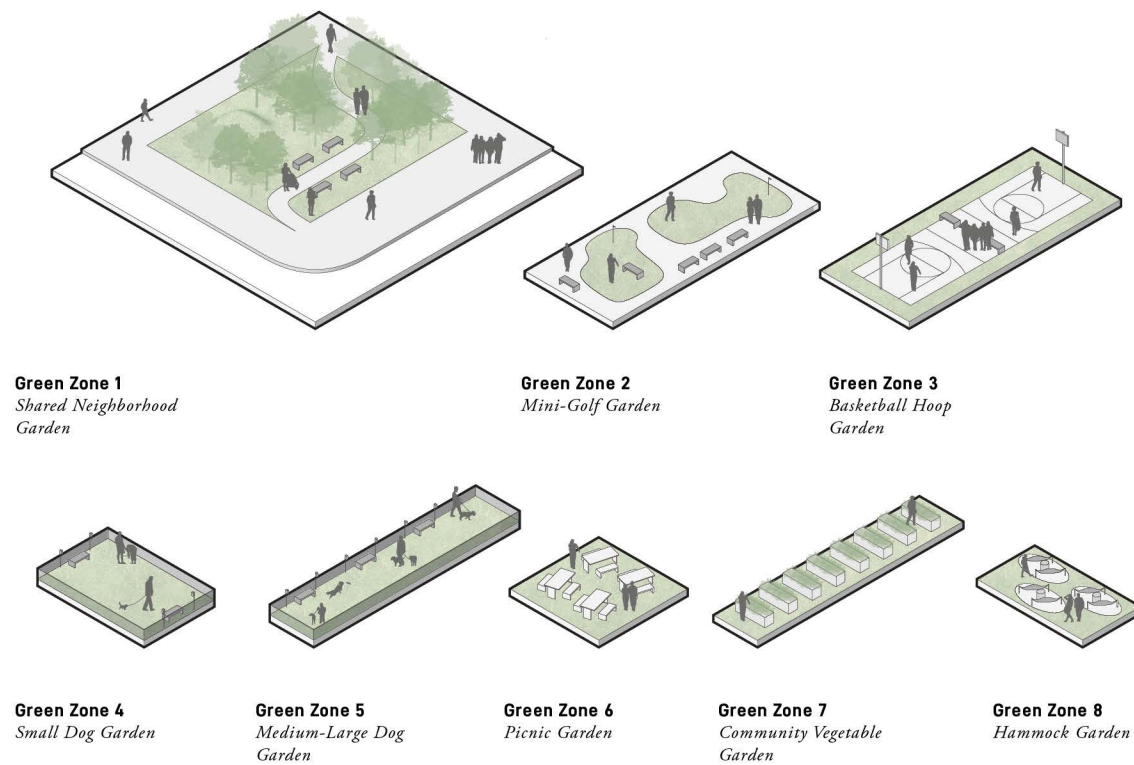
Arch. VIII Professional Studio +  
Instructed by: Susan Rodgers +

Houston, Texas +

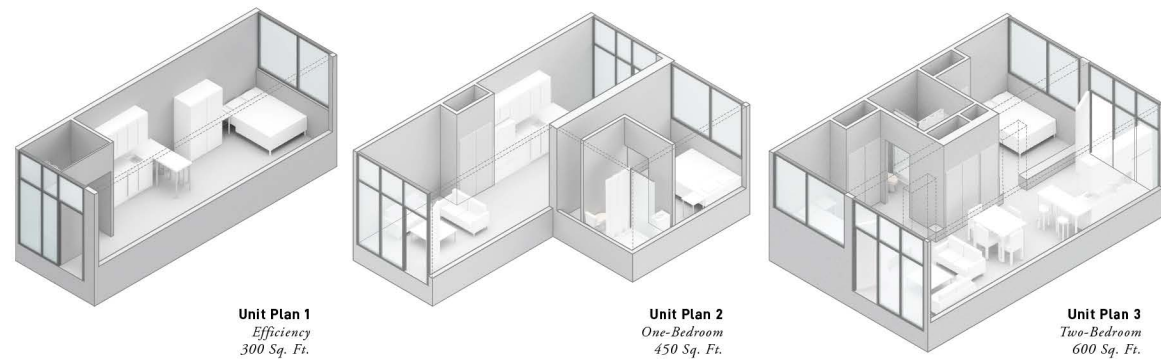
In disasters, like Hurricane Harvey, individuals are displaced from their homes for extended amounts of time. Affordable options for housing are hard to find. This project proposes to create a multi-family complex that can better withstand a similar disaster.

Using modular design, the transportation and assemblage of the complex is expedited and cost decreased, providing accessible, affordable housing solutions for many families. The modular nature of the complex allows for flexibility among various sites, making this a viable solution across many situations. Programmed green spaces create unity and community in the complex, while providing ownership in the form of a "yard" in an otherwise urban context.

## SELECTED WORKS



### + Proposed Green Spaces

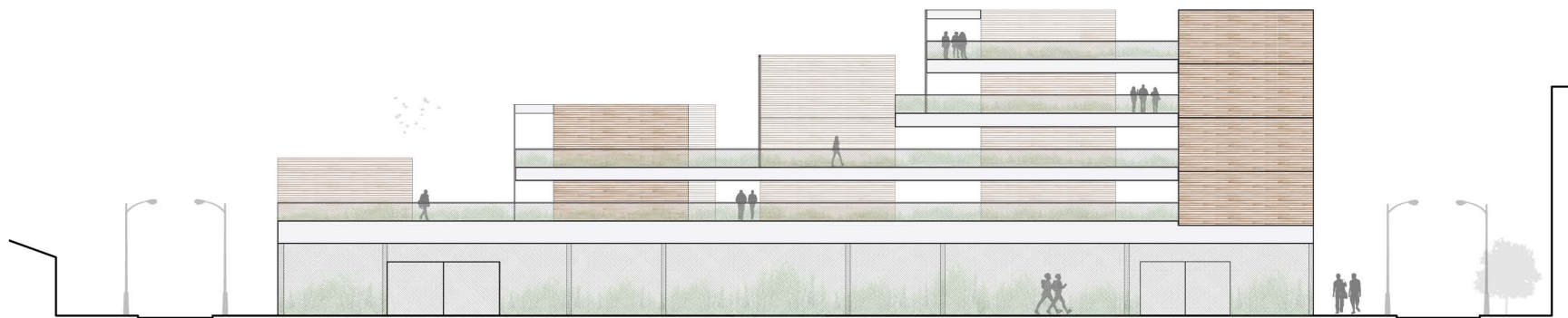


### + Floor Plan Diagrams

## ROCIO ALONSO



### An Active Corner +



### Side Elevation +



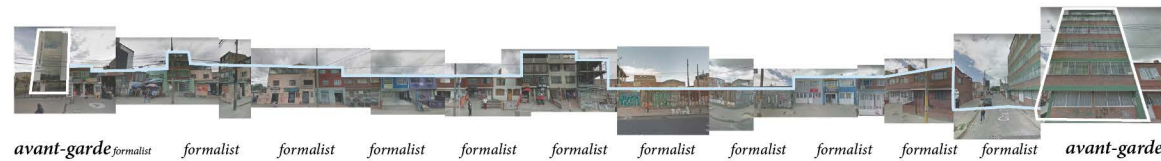
# 08 MASS & VOID

Arch. IX Professional Studio +  
Instructed by: William Truitt +

Ciudad Kennedy, Bogota, Colombia +

In his book "Architecture and Utopia", Manfredo Tafuri discusses formalist and avant-garde conditions in a utopian city, defining the avant-garde as an "appendage" or an afterthought, not completely integrated into the formalist organization. This approach can be found in Ciudad Kennedy in Bogota, Colombia.

The formalist conditions occur in the residences and commerce, through repetition in the parcels, and avant-garde conditions are present in public program, including schools, hospitals, civic buildings, etc. The lack of consideration for the avant-garde conditions has resulted in these programs occupying green spaces in the city. This project acknowledges the presence of the public conditions and utilizes them as drivers for the organization of the program.



+ The Formalist vs. Avant-Garde

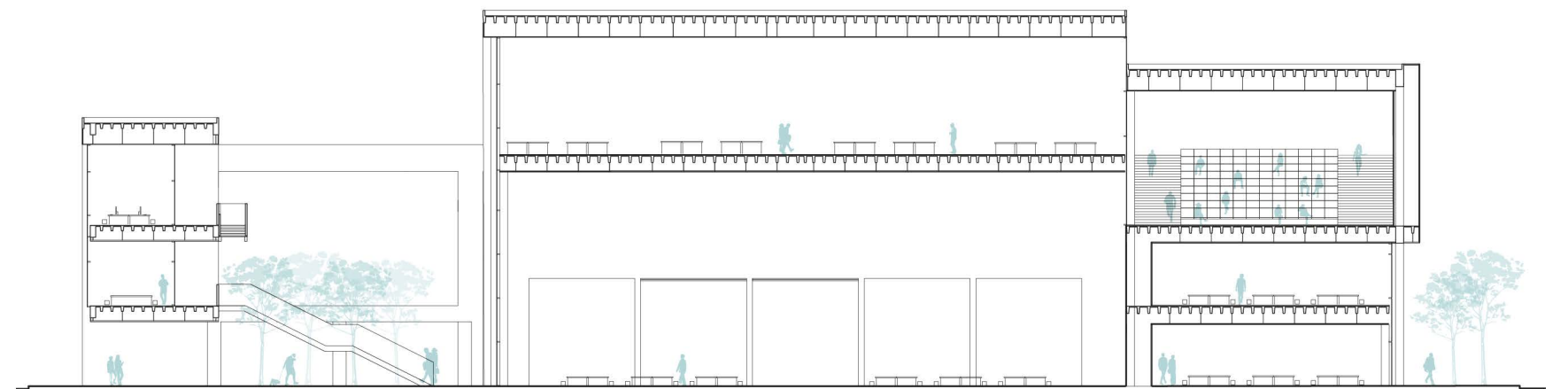
## SELECTED WORKS

## ROCIO ALONSO



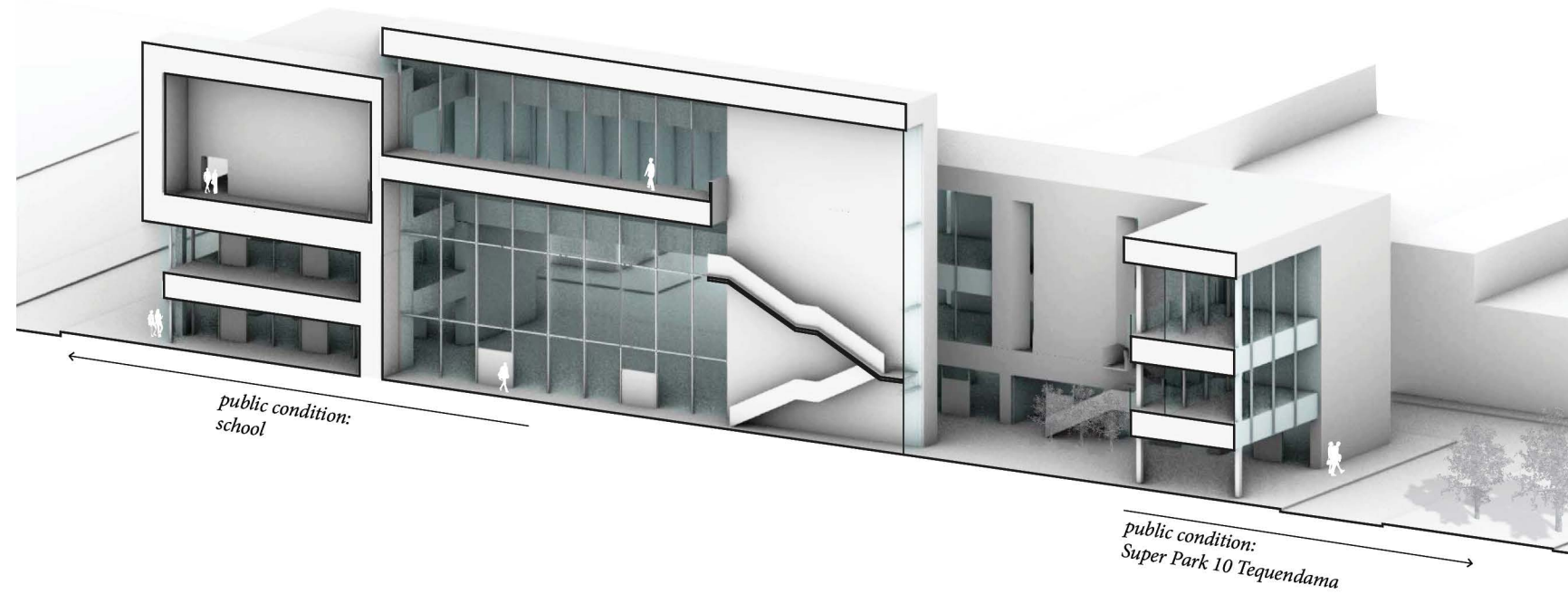
Urban Fabric of Ciudad Kennedy +

Public Conditions +

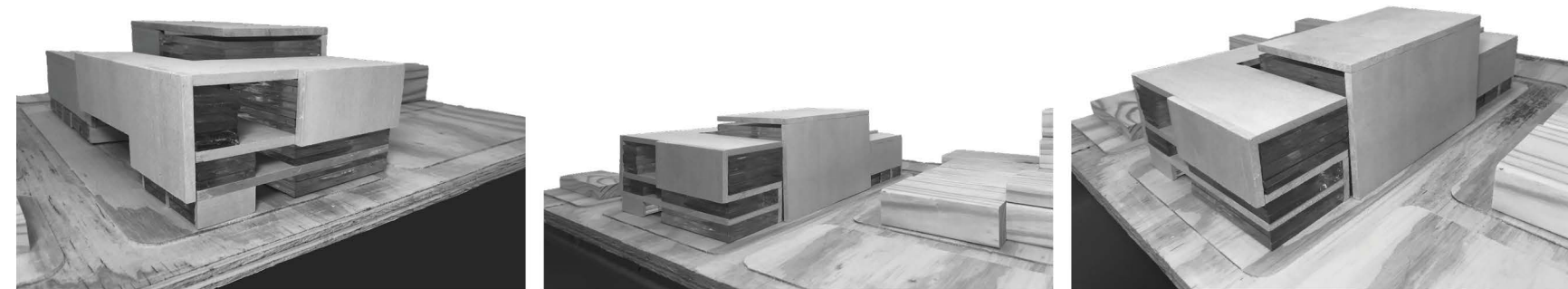


Courtyard and Workshop Section +





+ Section Perspective of Public Condition Relationships



+ Study Models



Public Park Perspective +



# 09 AFTER THE STRIP MINES

Undergraduate Thesis +  
Advised by: William Truitt +

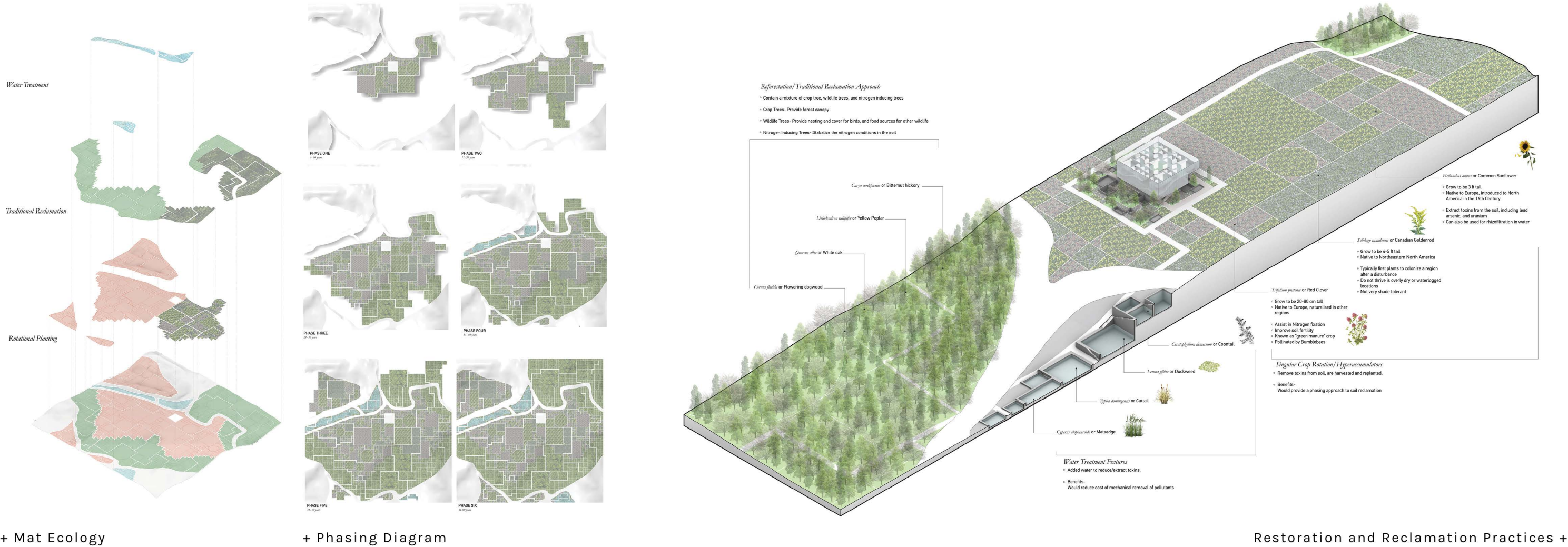
Cowen, West Virginia +

The landscapes and ecologies of Appalachia have been drastically altered due to the practice of mountaintop removal mining. Practices such as these, driven by economic intentions, resulted in damaging community resources and wildlife ecosystems.

Landscape has the potential to be a visual representation of various conditions, such as community, politics, and nature, and the irreversible changes and implications they have on an existing ecology. This thesis accepts the transformation of the Appalachian landscapes and the ecological repercussions involved by proposing to transform the scraped industrial landscape of a mountaintop removal mine into a working bio-remediation field and research center.

## SELECTED WORKS

## ROCIO ALONSO



+ Mat Ecology

+ Phasing Diagram

Restoration and Reclamation Practices +

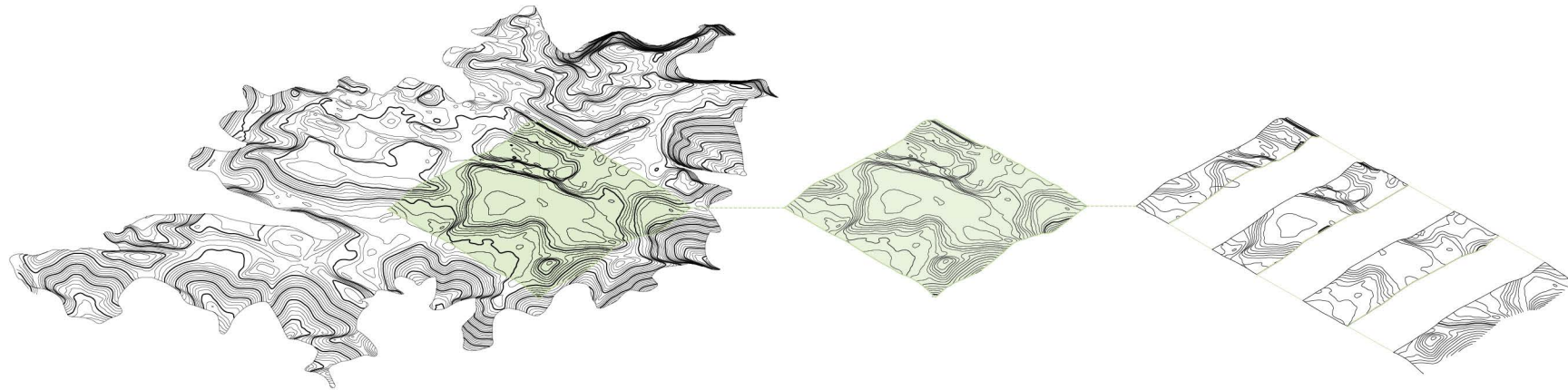
Gradient of Landscape Practices +



SELECTED WORKS

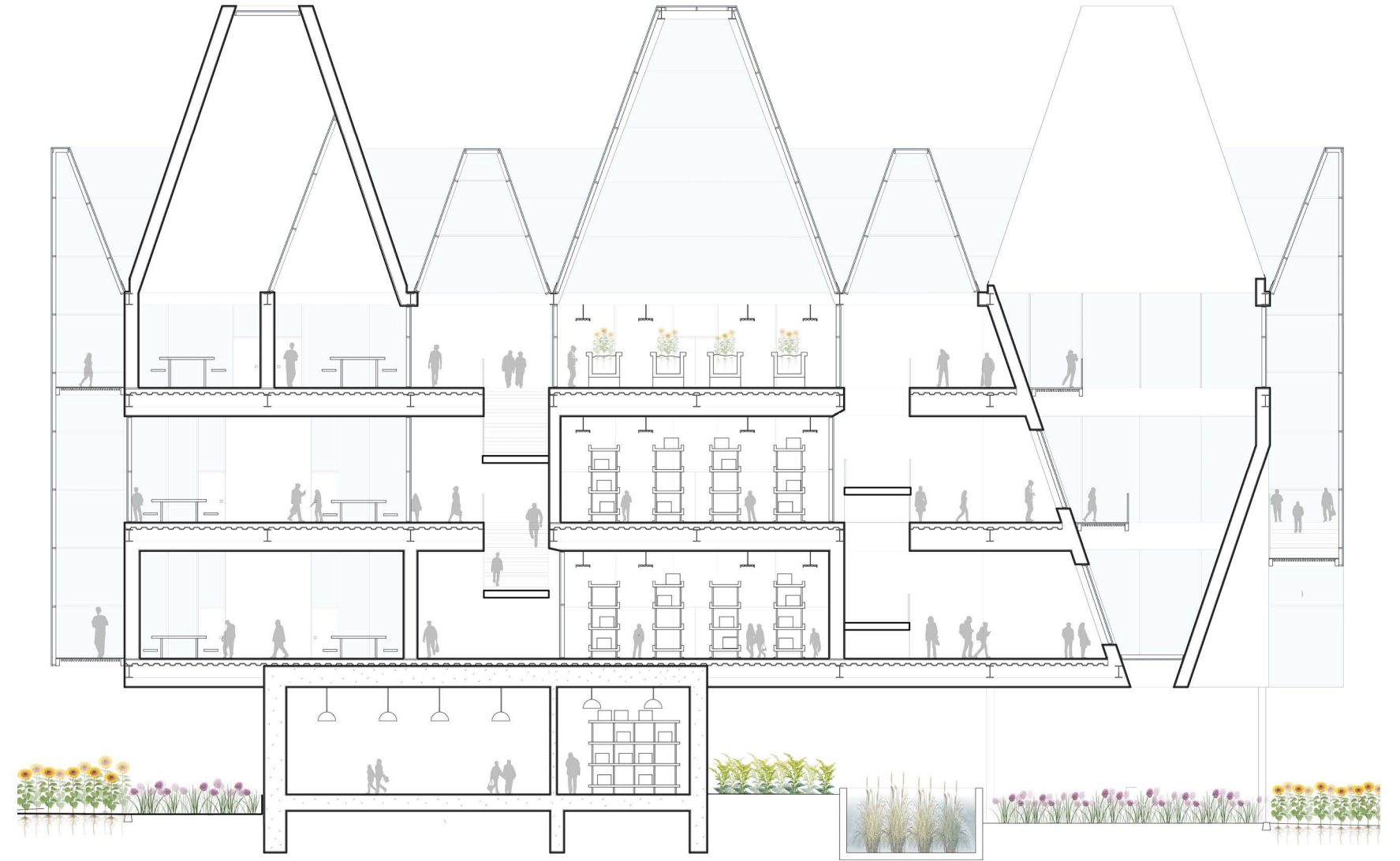


+ Development Perspective



+ Complete Mine to Site Diagram

ROCIO ALONSO



Building to Landscape Section +



# 10 VISUALIZING HARBORWALK 2.0

Planning and Policy Fellowship + Boston Harbor Now +

Boston, Massachusetts, USA +

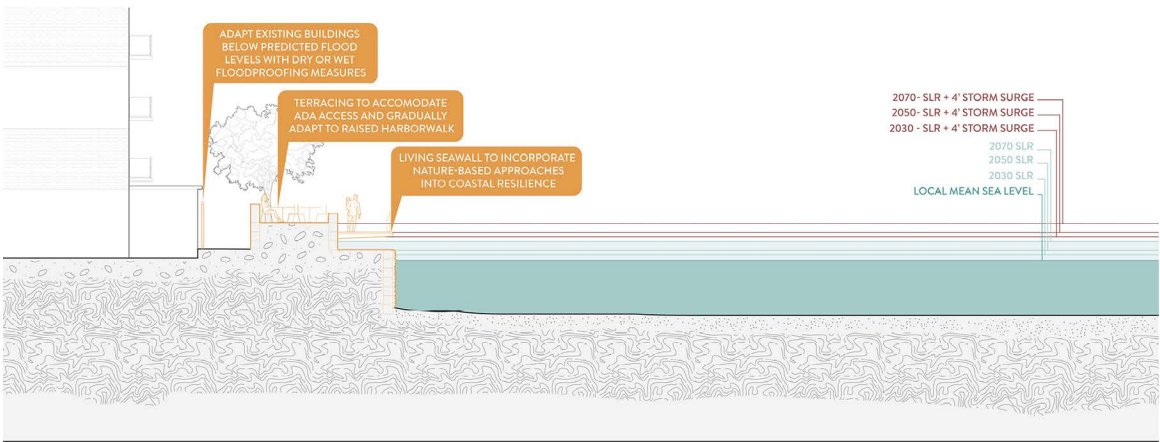
Boston Harbor Now recognizes that nearly four decades of planning has created an extensive network of waterfront paths and parks on public and private property. In order to address the need for higher standards in the face of the climate crisis and decades of structural inequality, Boston Harbor Now is pushing for a bolder waterfront vision encapsulated by an initiative titled, Harborwalk 2.0. The principles of Harborwalk 2.0 are described in and guide the development of Boston Harbor Now's comment letters.

This guide illustrated some of the ways the principles might be realized across a range of coastal conditions. Though written for Boston, it is envisioned that these principles can be applied to other urban waterfronts in Massachusetts and beyond.

SELECTED WORKS



+ Wharf Interventions

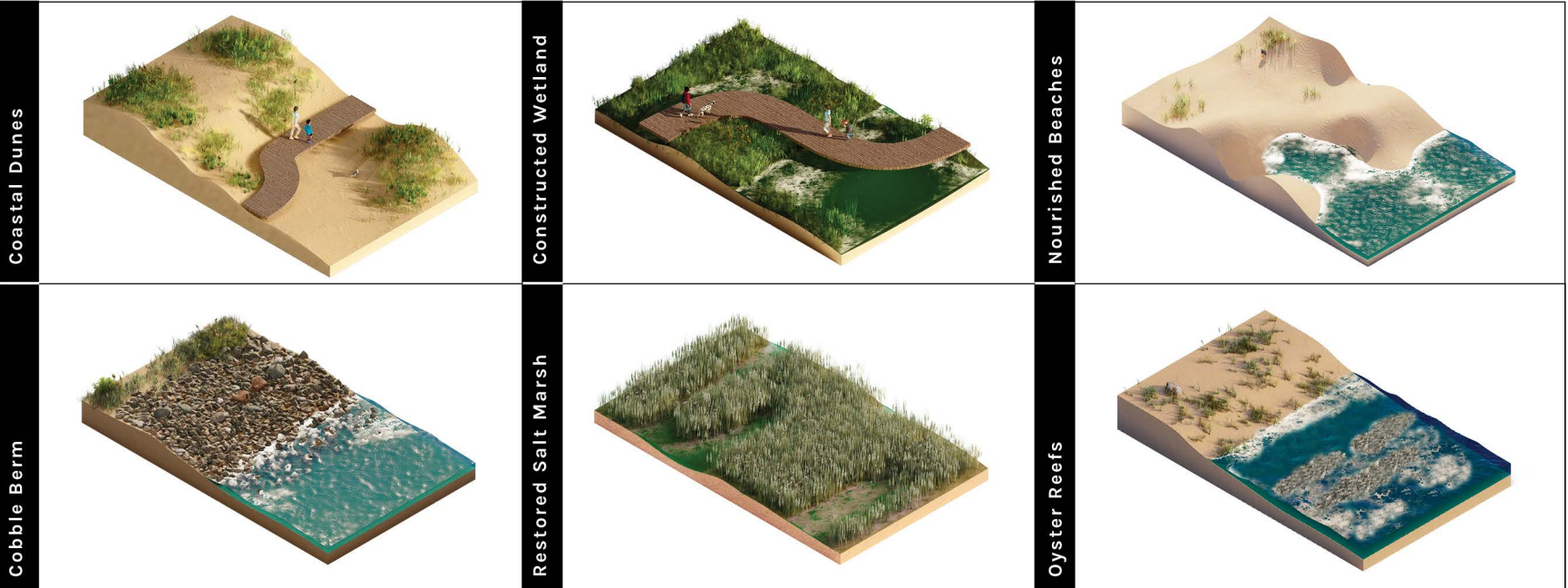


+ Seawall Interventions

ROCIO ALONSO



Traditional, Artificial Interventions +

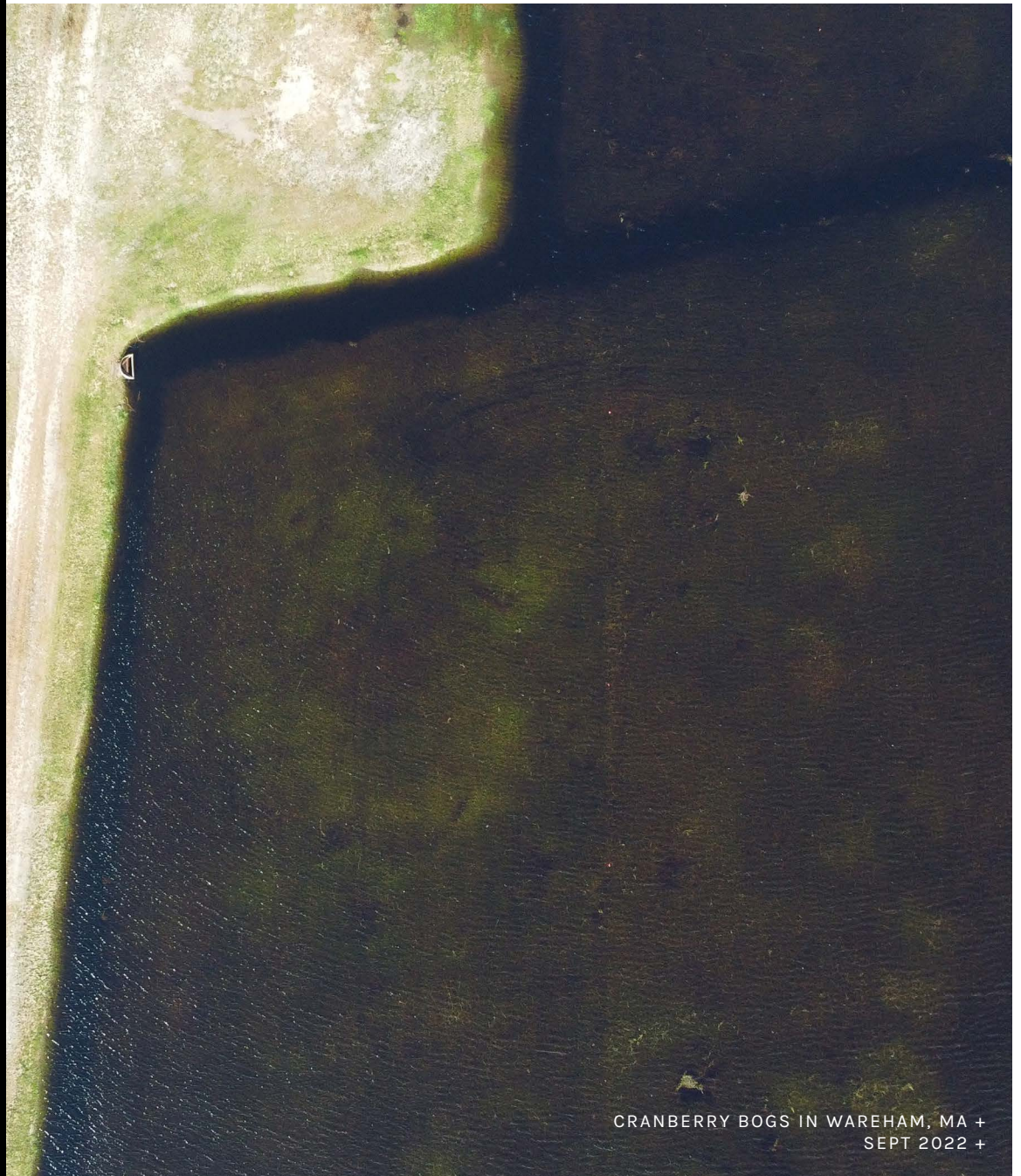


Nature-Based Interventions +



+ Thank you for your time and  
consideration.

+ ROCIO ALONSO



CRANBERRY BOGS IN WAREHAM, MA +  
SEPT 2022 +