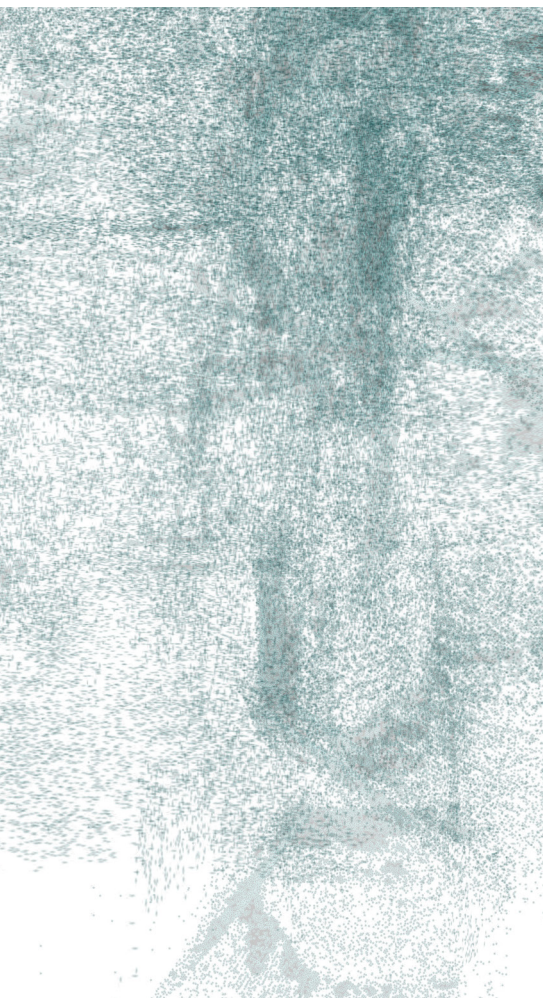


# **PORTFOLIO** Sam Meyers



# Sam Meyers

## Architectural Graduate

### Contact

sameyers@bsu.edu  
317-601-8611

### Skills & Expertise

#### 2D and 3D

-Rhinceros	-VectorWorks
-Revit	-Zbrush
-Grasshopper	-Blender
-Autocad	-RealityCapture

#### Render

-Twinmotion	-Vray
-Enscape	-Keyshot

#### Post Processing

-Adobe Suite Products (photoshop, illustrator, indesign)

#### Personal Skills

- Adaptable
- Reliable
- Detail Oriented

### References

#### Sean Burns

Associate Professor at Ballstate  
Sfburns@bsu.edu  
646-416-1956

#### Josh Coggeshall

Associate Professor at Ballstate  
Shimizu + Coggeshall Architects  
Jrcoggeshall@bsu.edu  
765-702-8802

#### Thomas Reeves

Architect & Designer at Weiss/  
Manfredi  
Treeves@weissmanfredi.com

### Education

#### Bachelors of Architecture

2019-2024

Ball State University - Muncie, Indiana

#### Deans List Honors

2019-2024 (Fall and Spring Semesters)

### Experience

#### Weiss/Manfredi 2023

Architectural Intern, January to August  
New York, New York

Worked in the conceptual and SD phase of design on LaBrea Tar Pits, Made many physical models for the firm, worked on competitions for the firm.

#### Grinsfelder Associate Architects 2022

Architectural Intern, May to August  
Fort Wayne, Indiana

Participated in the construction process from design to completed CD set.

#### David Rausch Studio 2021

Architectural Intern, May to August  
Zionsville, Indiana

Schematic Design Modeling,

Tasked with creating models from floor plans and elevations.

#### Exhibited Work

Familiar Objects (Machined Semiotics): 2023 -  
Patrick Danahy

Something Every Week: 2023 - Self Organized

GAPS : 2024 - Janice Shimizu, Josh Coggeshall

### Awards

Indiana Hardwood Lumberman's Association  
Competition Finalist 2020

Meticulous Furniture Design Competition 2022

MKM Steel Competition Finalist 2022

TEG Design Prize 2024 "Excellence in Innovation"



# Contents

Inhabitable Infrastructure

Redacted

The Beacon

Personal Work

Professional Work

# 404 Studio

## Inhabitable Infrastructure

Professor: Sarah Keogh

New York, New York

Spring 2024

In the contemporary architectural landscape, a large portion of urban inhabitants finds themselves living without a true sense of a "focused home". These individuals, often marginalized, rely on rudimentary tertiary infrastructures that shape their fractal perceptions of the cities they call home. In response, a series of architectural interventions have the potential to transform these perceptions into something far more profound and meaningful. By establishing essential community infrastructures that are not only multifunctional but also aesthetically inviting, the built environment can become a catalyst for positive change. These interventions aim to provide resources equitably, transcending socio-economic divides and making them accessible to the entire community. In pursuit of this goal, these architectural innovations can spark a reawakening of the intermediate spaces within the urban framework, promoting social harmony, and the growth of robust communities.



Spring 2024

Inhabitable Infrastructures

Ball State University

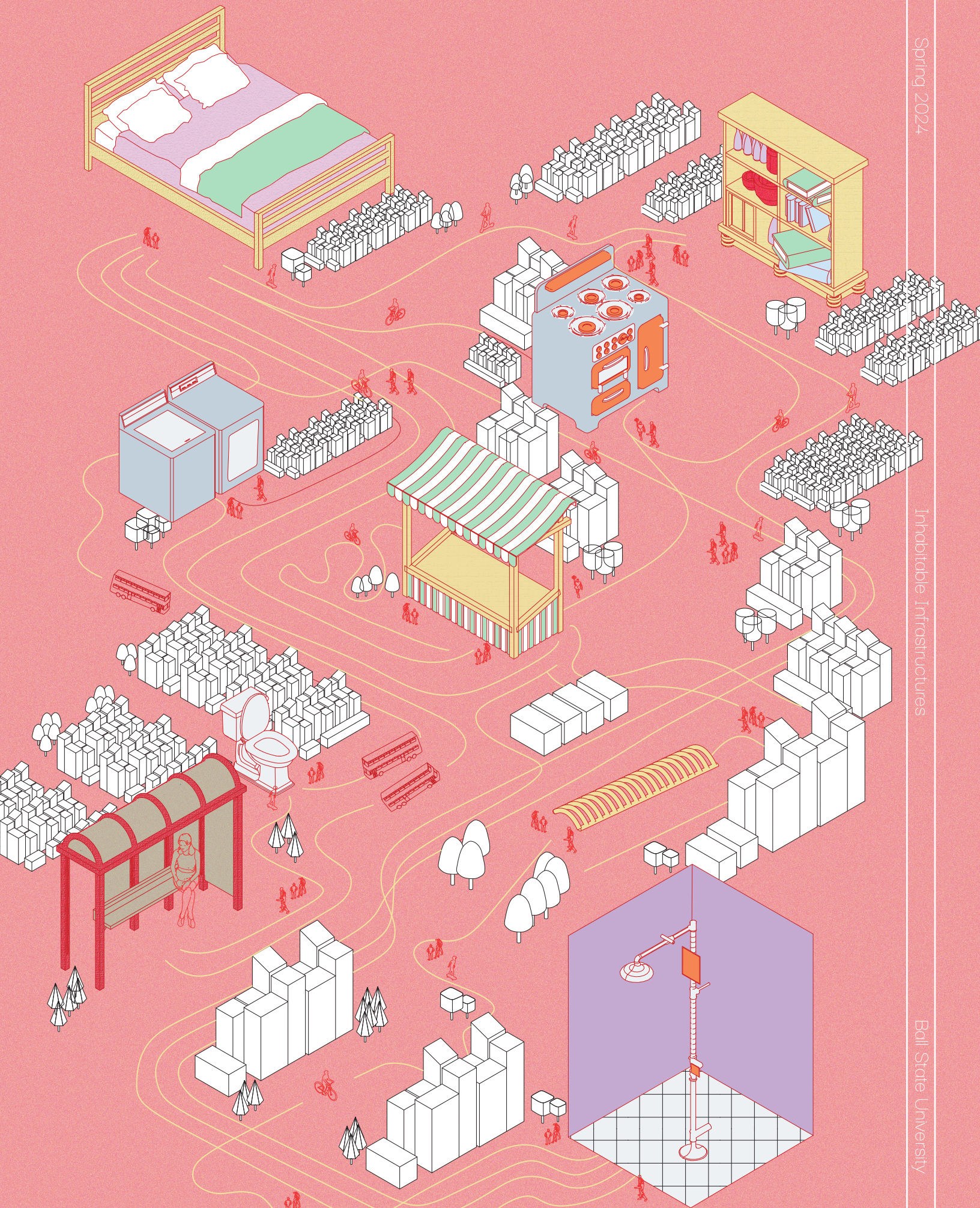


# SCAFFOLD

# ALLEYWAY

# BRIDGE

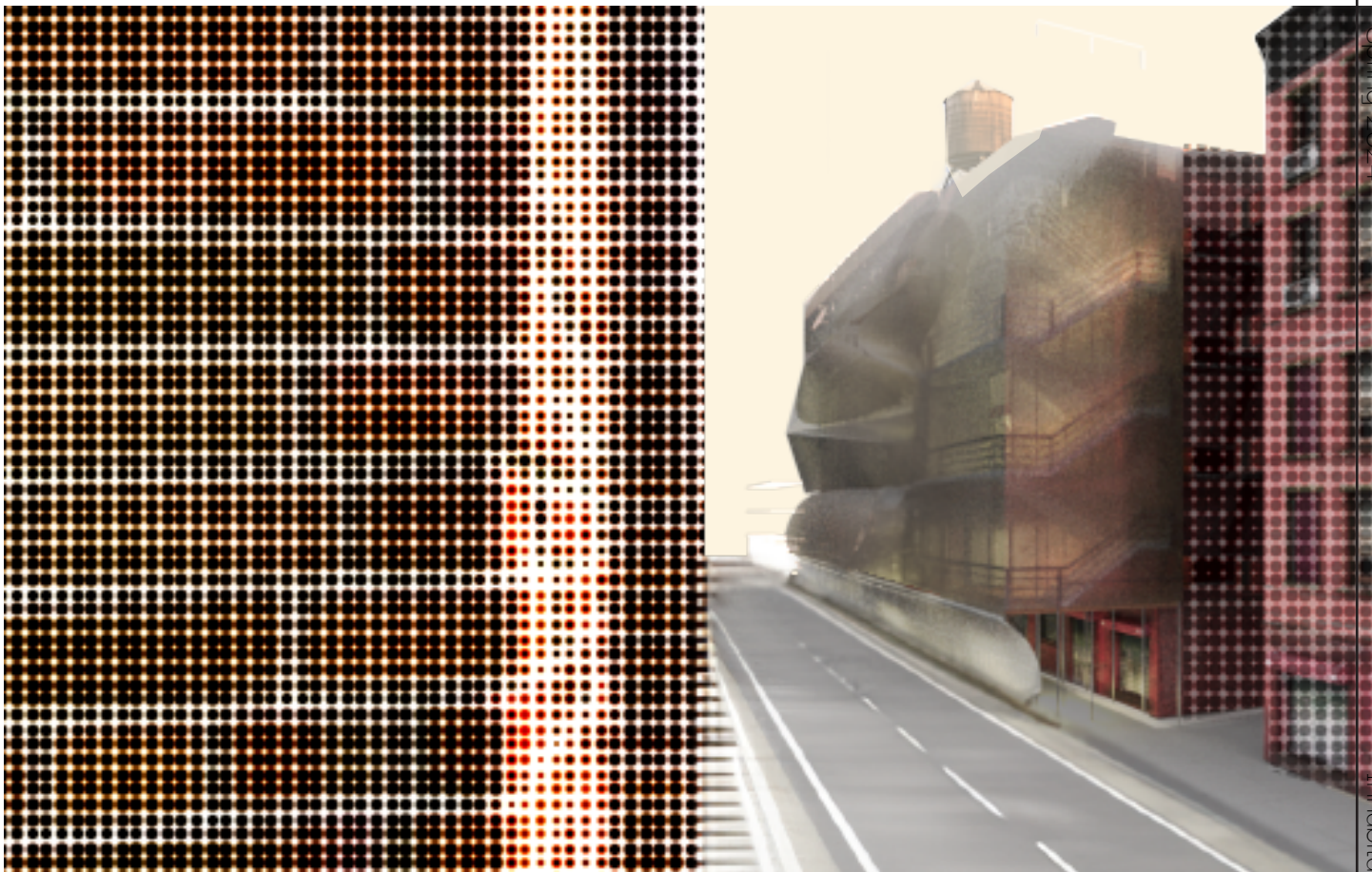








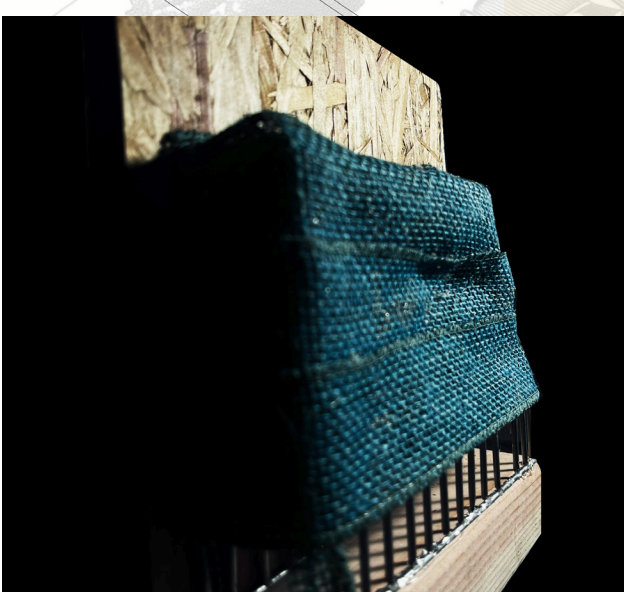
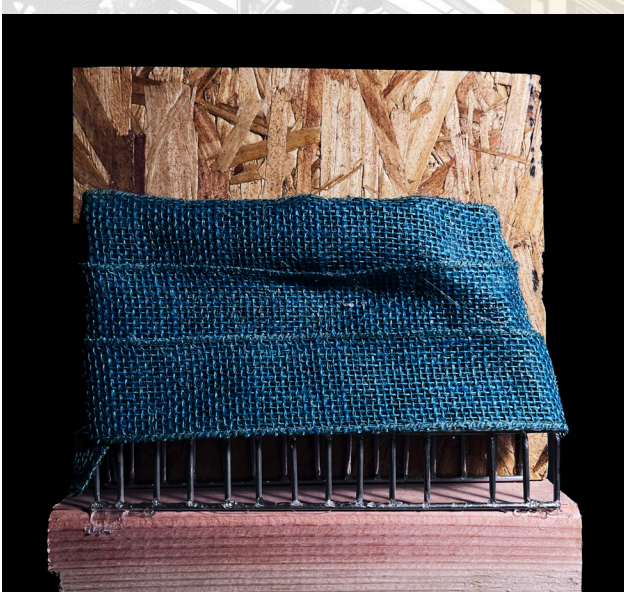
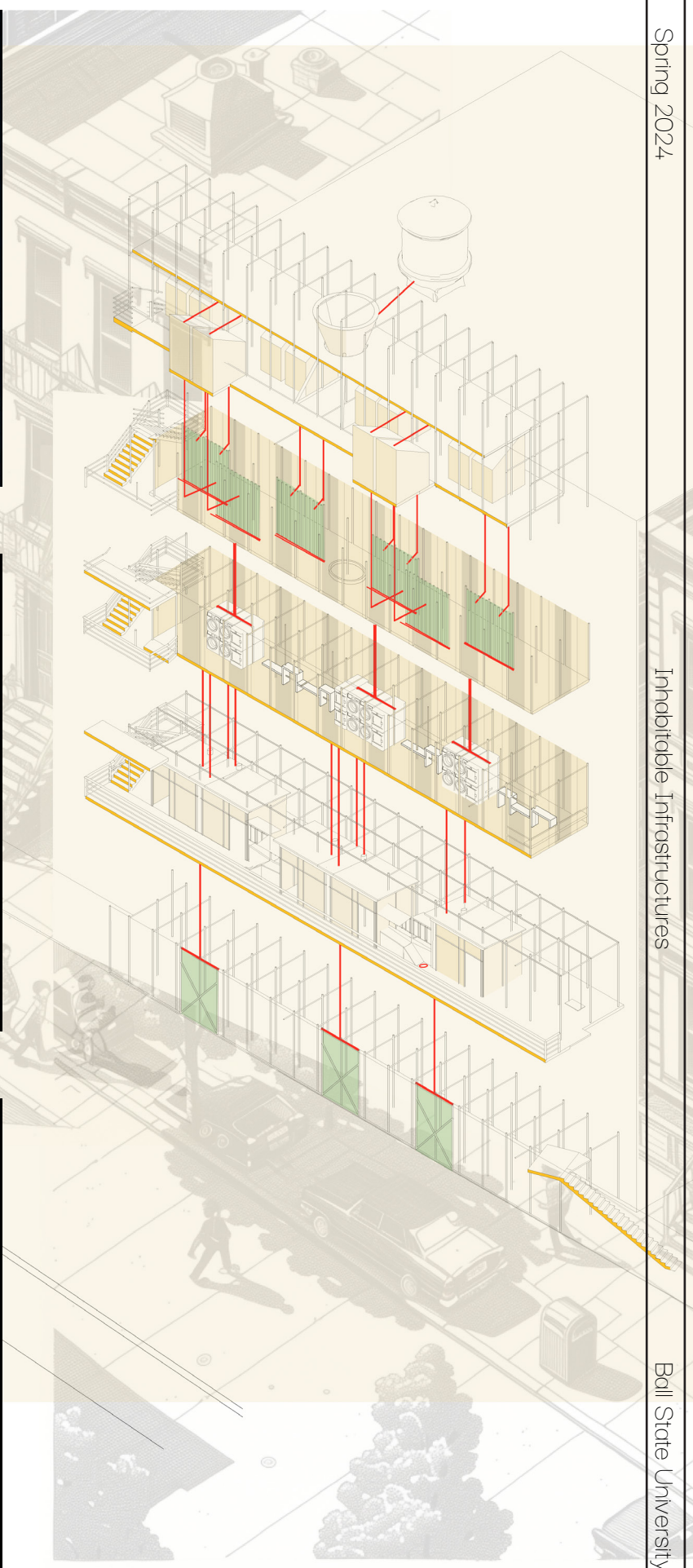








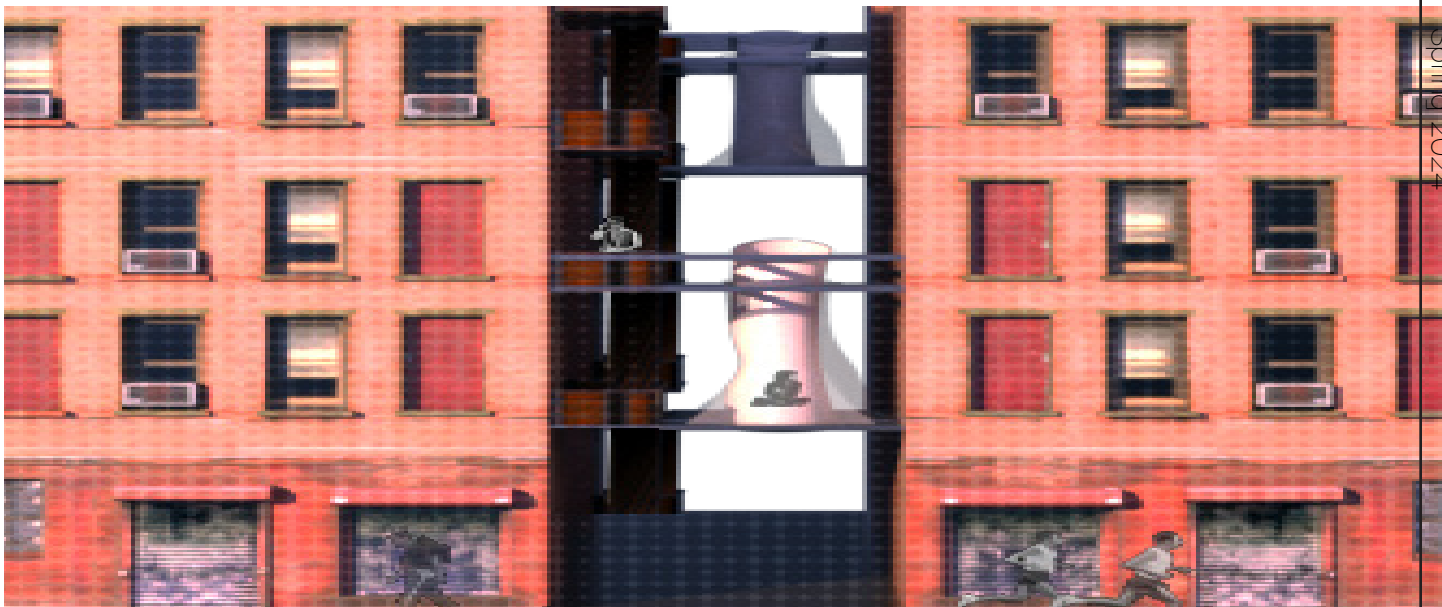




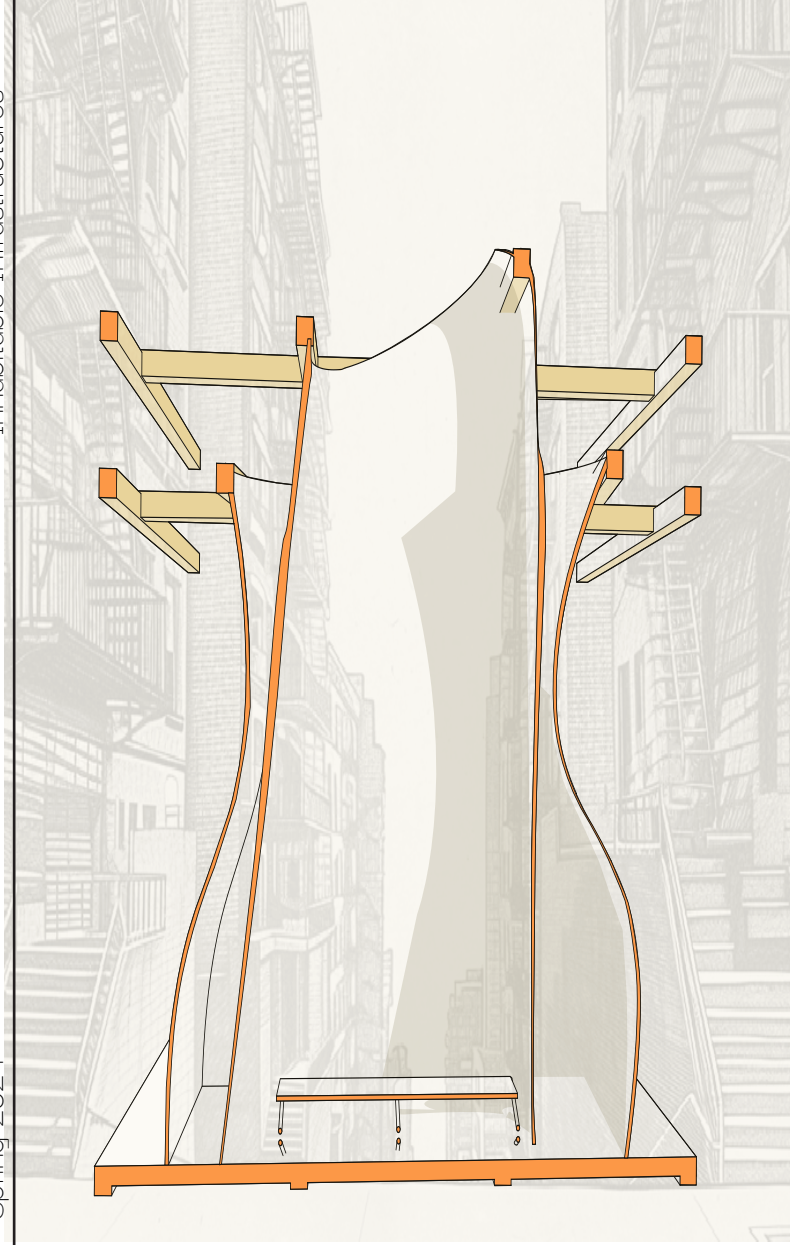








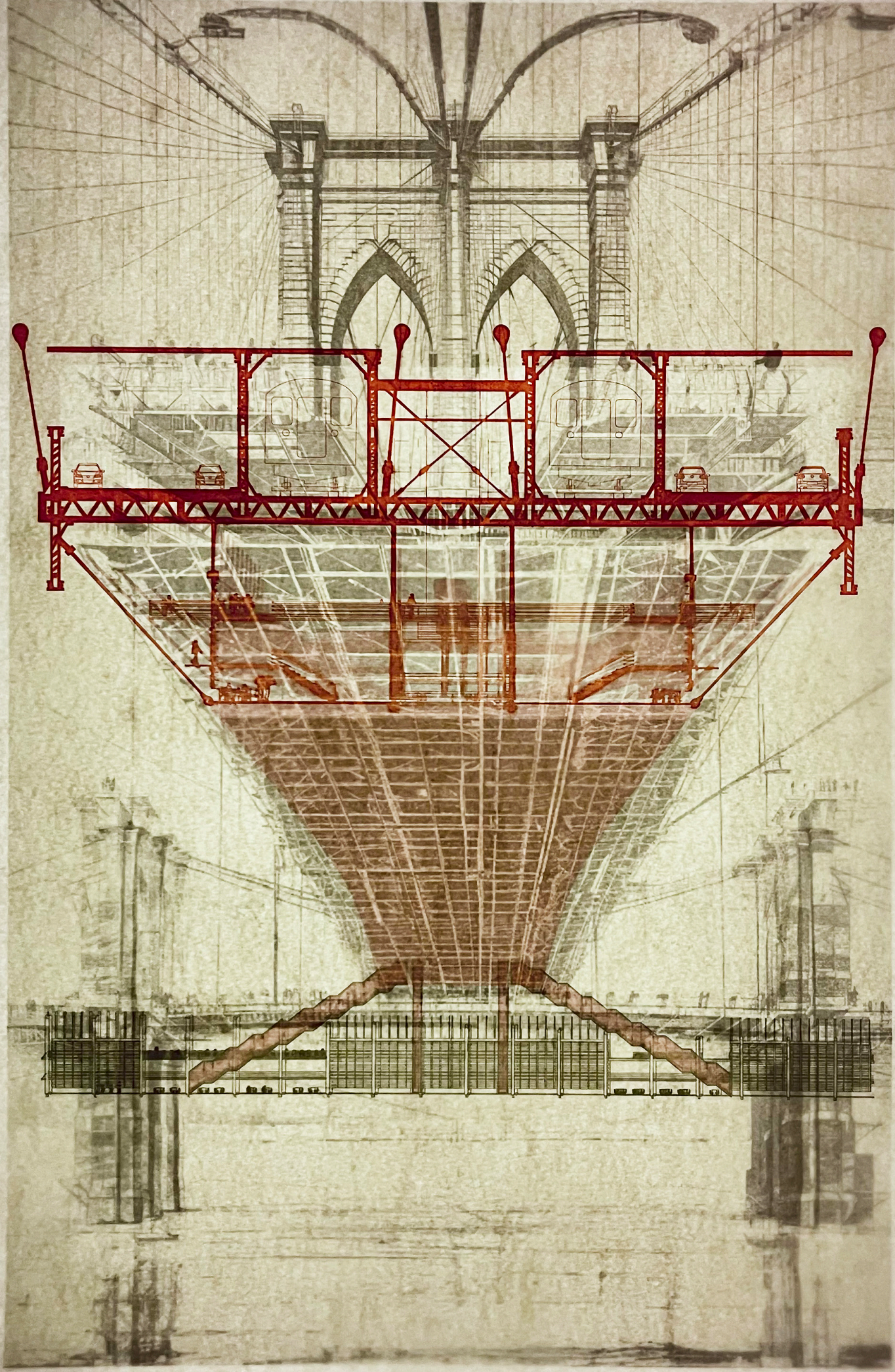




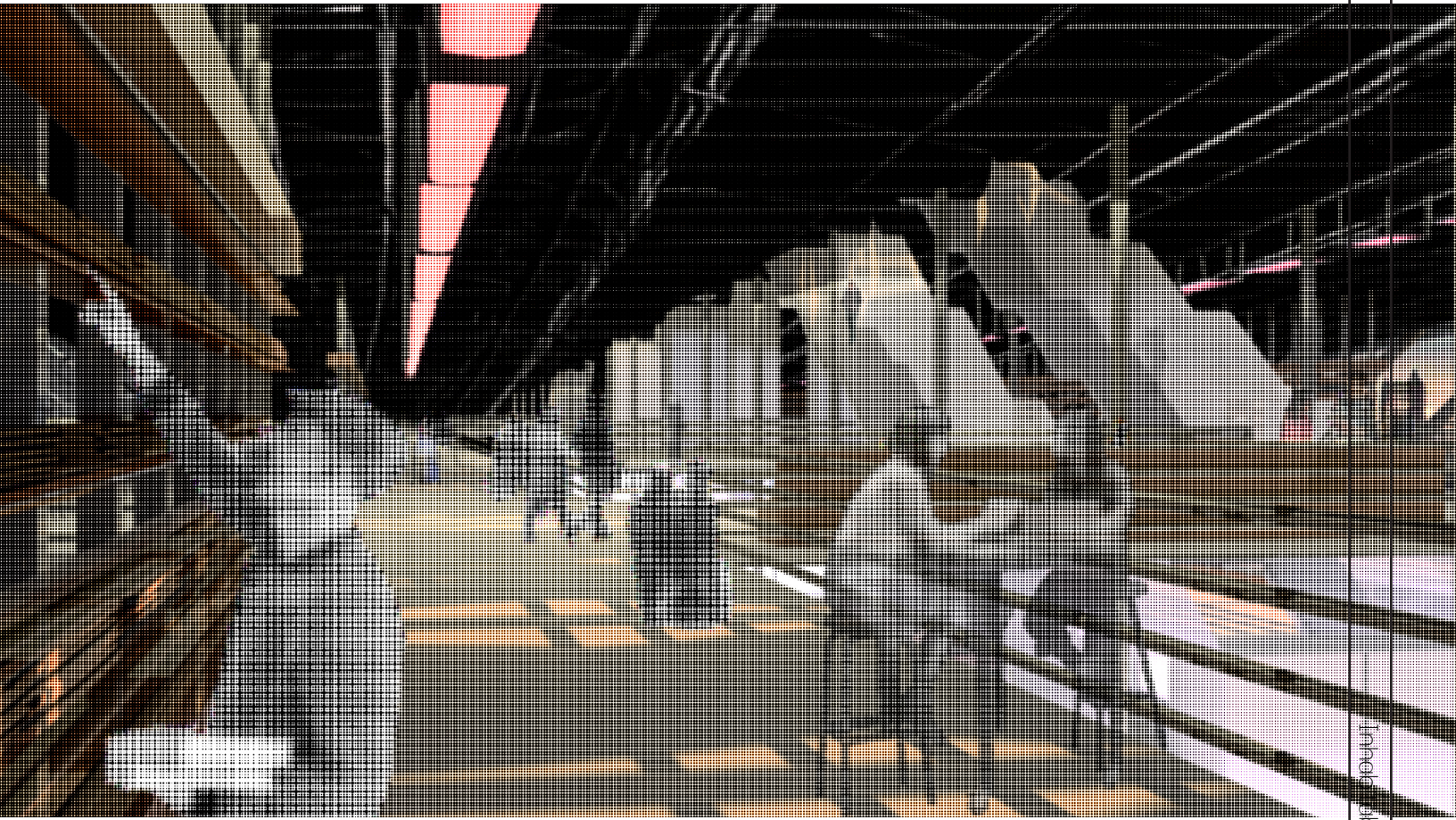




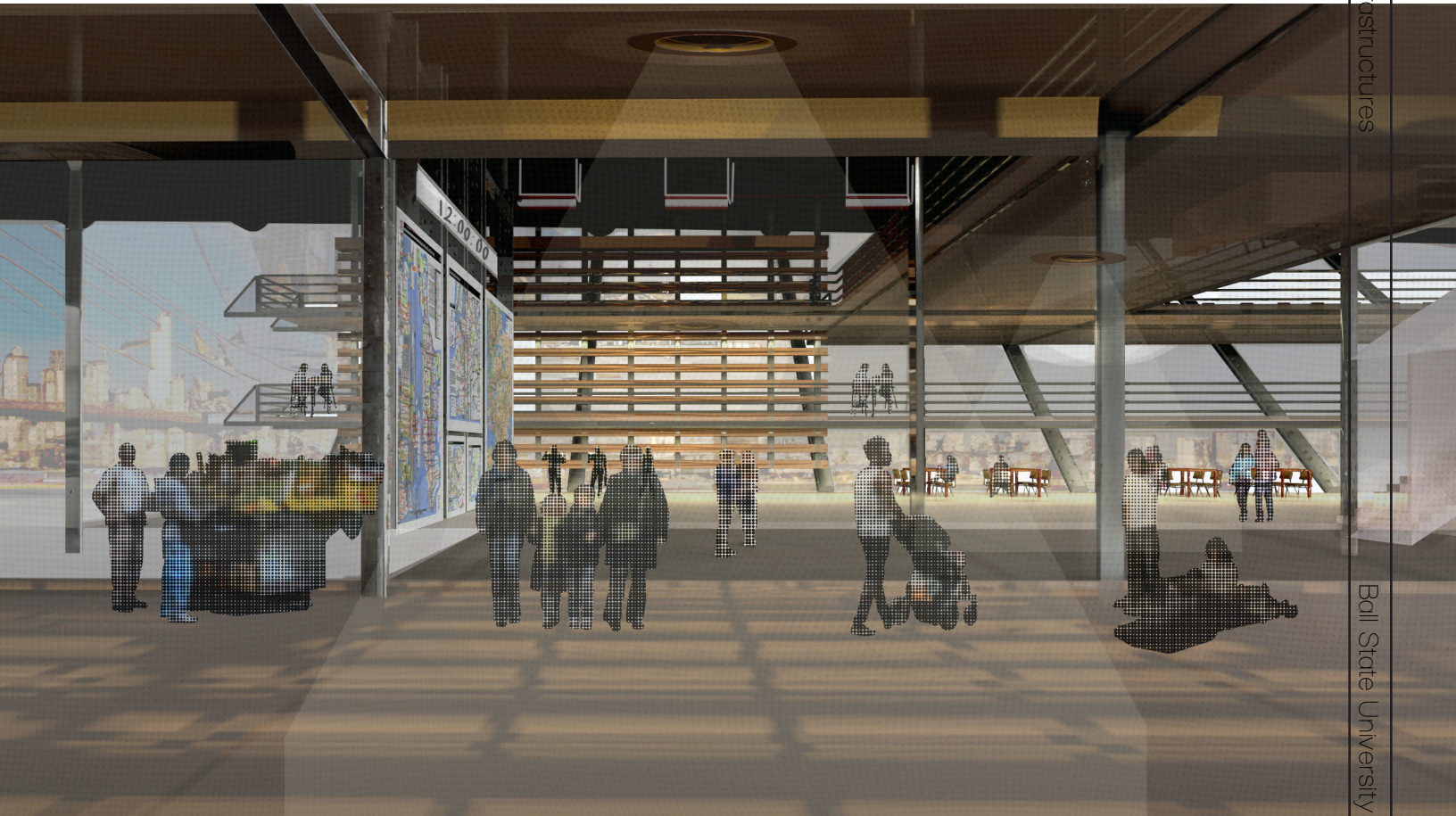








Inhabitable Infrastructures



Ball State University





# 400 Studio

## Redacted

Professor: Janice Shimizu

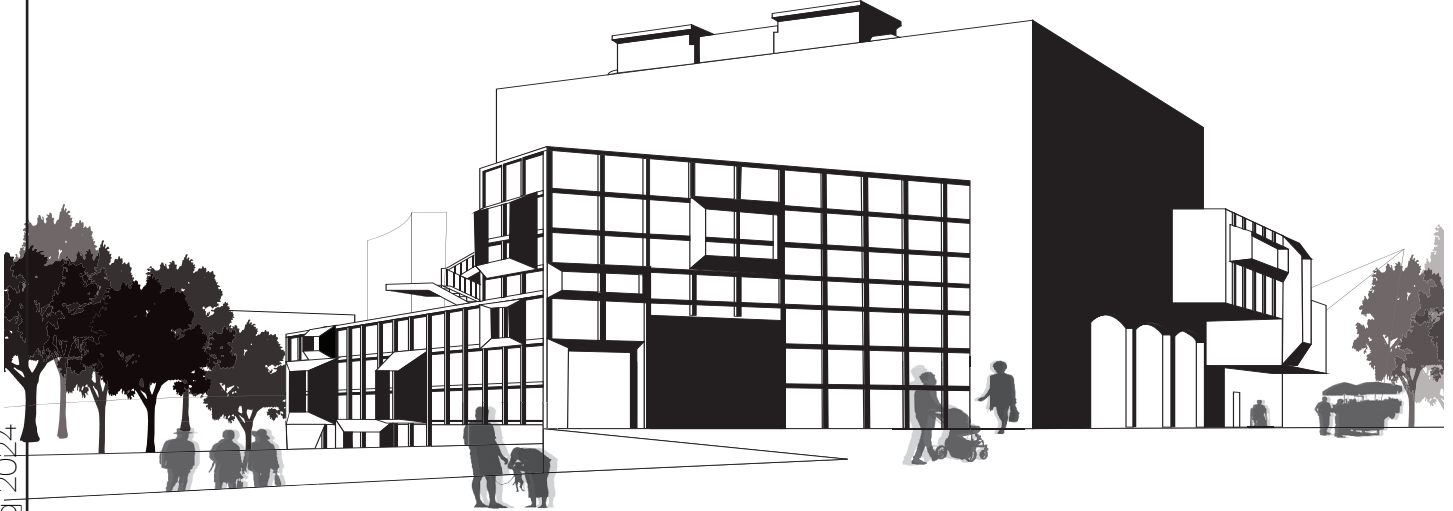
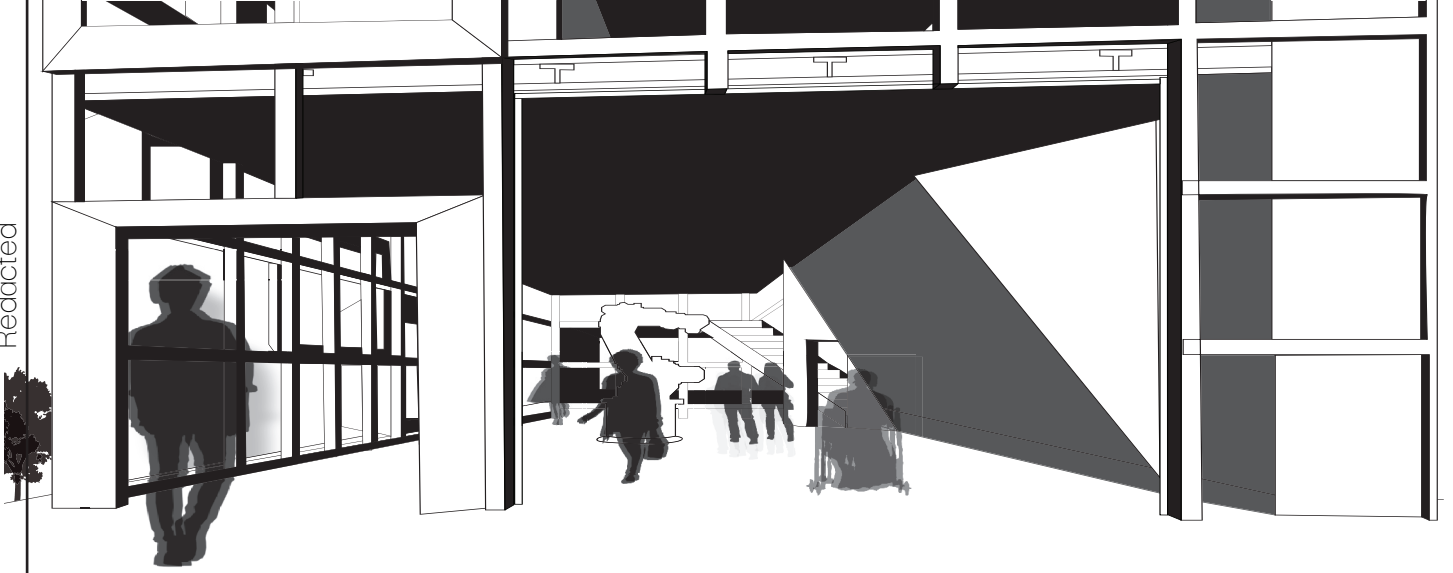
Partner: Matt Holman

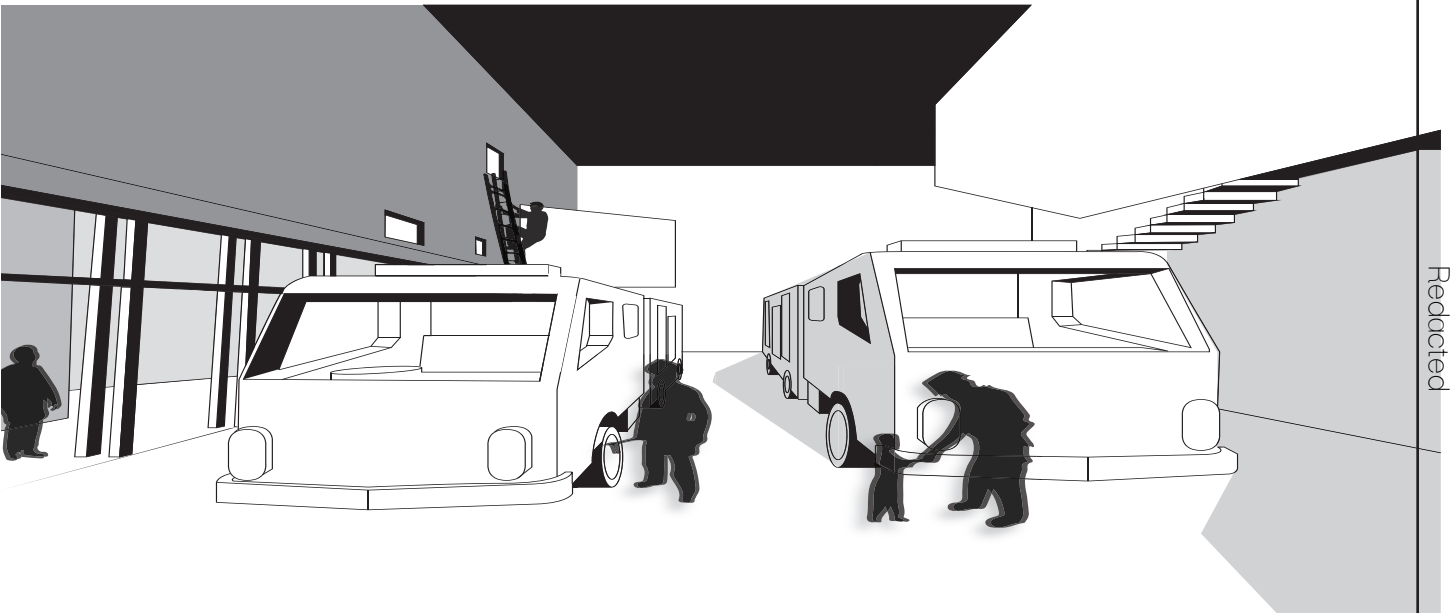
Indianapolis, Indiana

Fall 2022

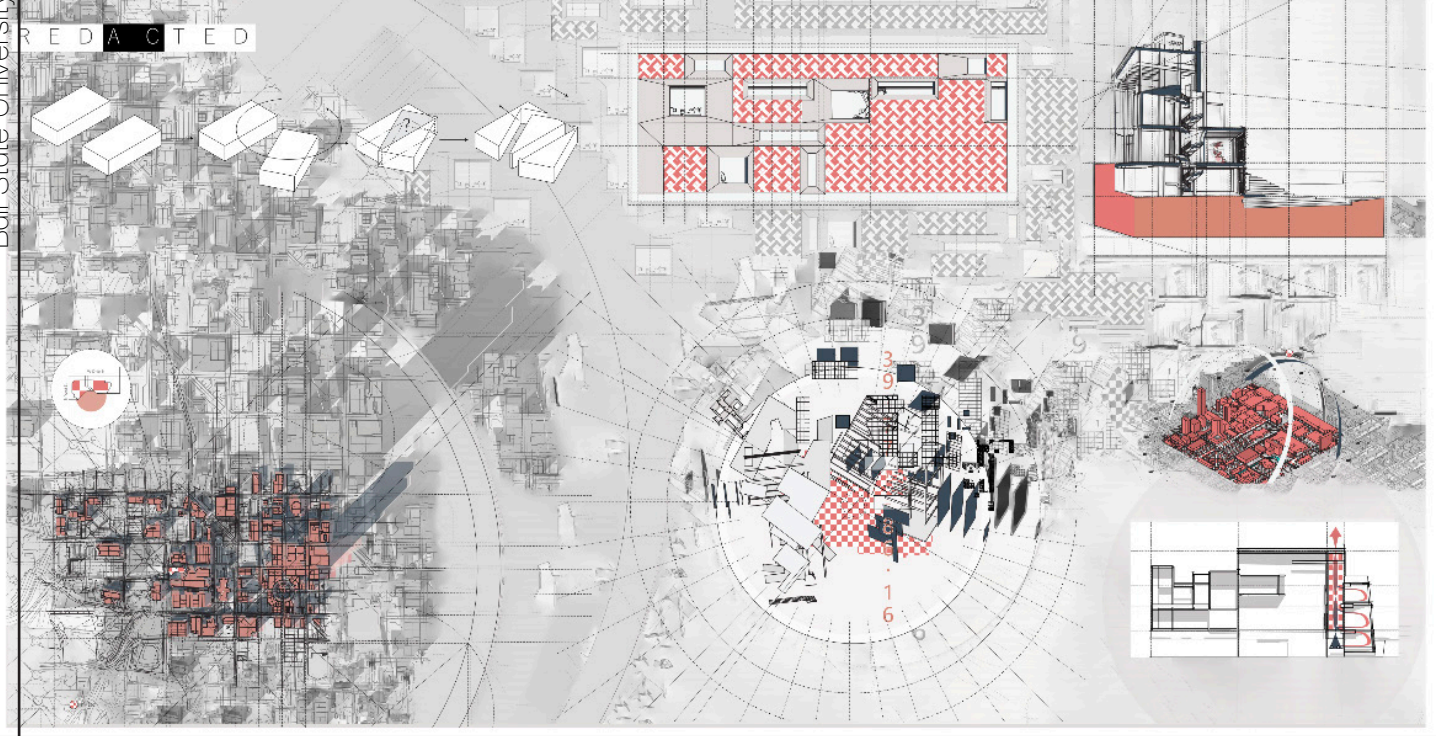
In collaboration with a fellow designer, our project focused on the innovative integration of transparency and privacy within a fire station environment. The objective was to unveil the inner workings of the station while ensuring the privacy and functionality crucial to its operations. A key element of our design was a hidden room, ingeniously concealed yet selectively visible from certain angles. This space served as a vital operational area for firefighters, adding an intriguing layer of discovery to the station's layout. Moreover, our project included a maker space as an annex, where firefighters could actively engage in rebuilding and customizing their station to suit evolving needs. This space was also accessible to the public, fostering community engagement and shared utilization. Through a combination of architectural ingenuity and sensitivity to operational demands, our project demonstrated a harmonious fusion of visibility and discretion, empowering the fire station to be both functional and inviting.











# 302 Studio

## The Beacon

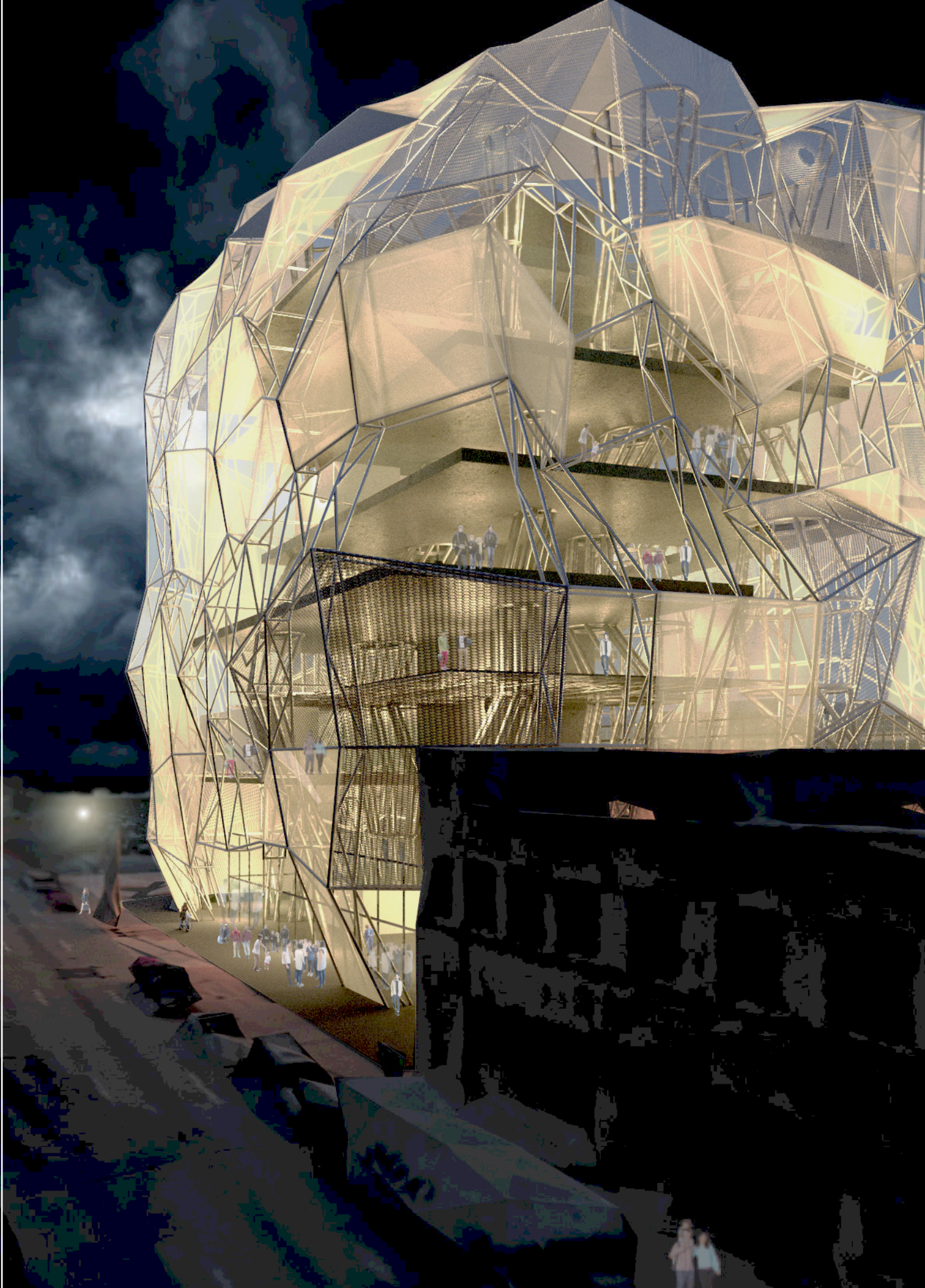
Professor: Tim Grey

Cincinnati, Ohio

Spring 2022

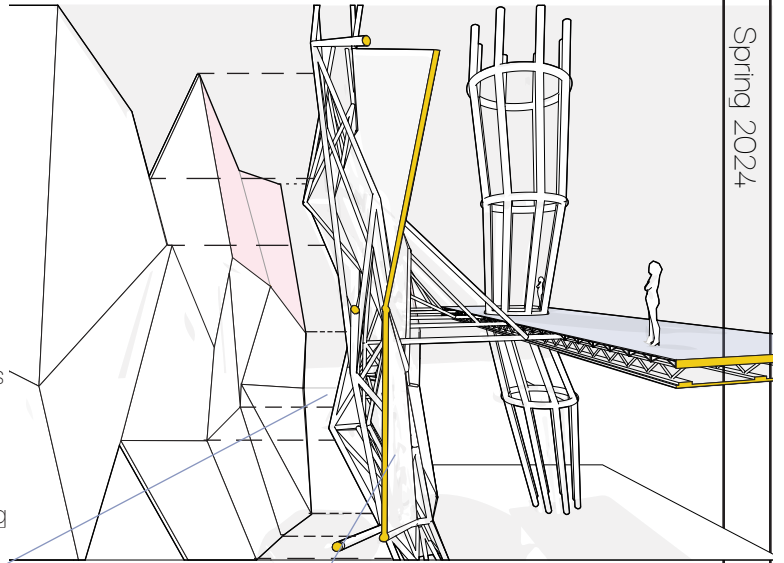
Like a geological formation the urban fabric of Cincinnati is a complex system of accumulated layers over time. The Beacon celebrates this inherent complexity by superimposing a faceted skin of three separate material systems over a steel substructure. The Beacon helps to usher in a new era, embracing emerging technologies. The Juxtaposition to the historic Richardsonian city hall further underlines and makes transparent this condition. Celebrating the qualities of the historic and new through the juxtaposition of opposites. The light, delicate, and transparent qualities of The Beacon heightens one's awareness and appreciation of the massive masonry expression of the adjacent city hall. Furthermore, the Beacon will act as a lantern and a landmark within the city. Inviting the community and the city as a whole to experience a new path forward..



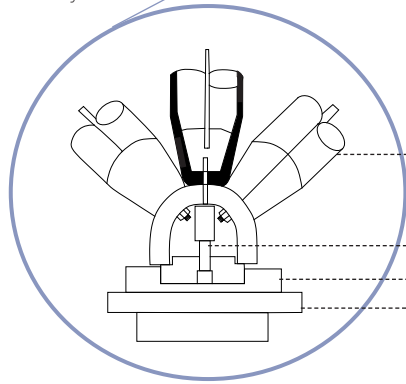




- 1) Auditorium
- 2) Lobby
- 3) Cafe
- 4) Day Care
- 5) Loading Dock
- 6) Storage
- 7) Retail Space
- 8) Library
- 9) Classrooms
- 10) CNC
- 11) Conference Rooms
- 12) Admin Offices
- 13) Kitchenette
- 14) Office Space
- 15) Affordable Housing
- 16) Community Space
- 17) Gallery



Perspective Steel Detail

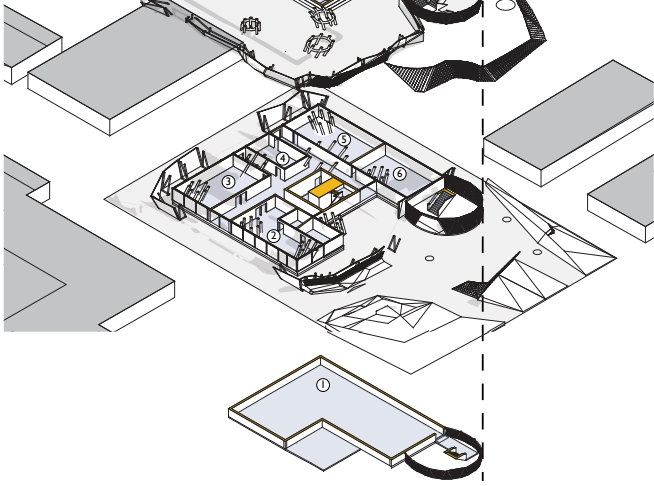
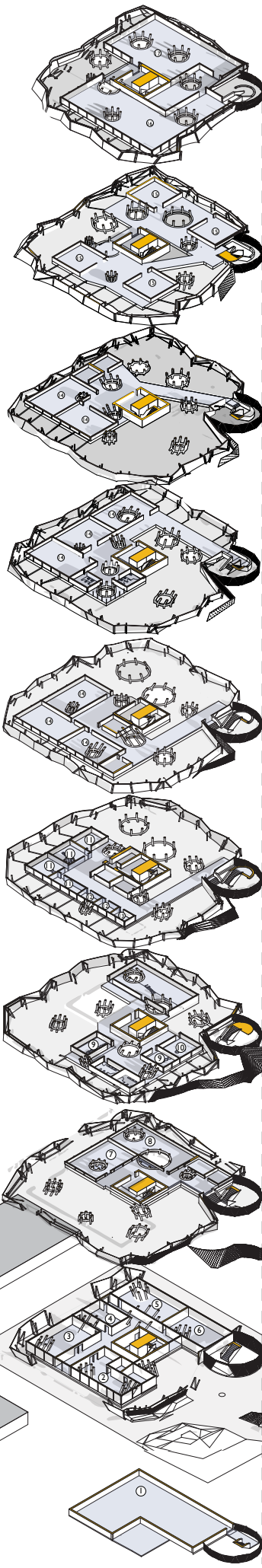
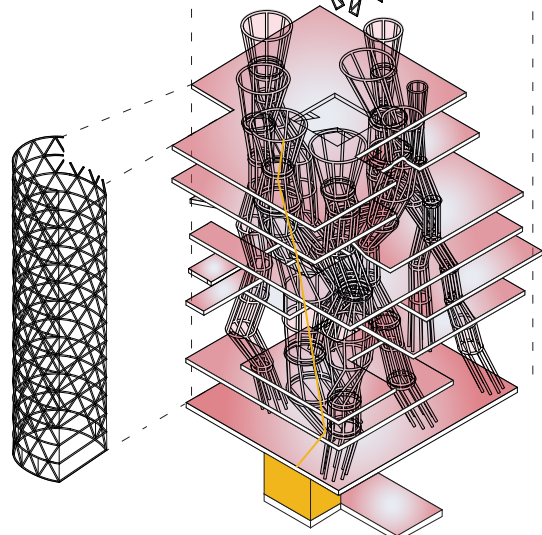
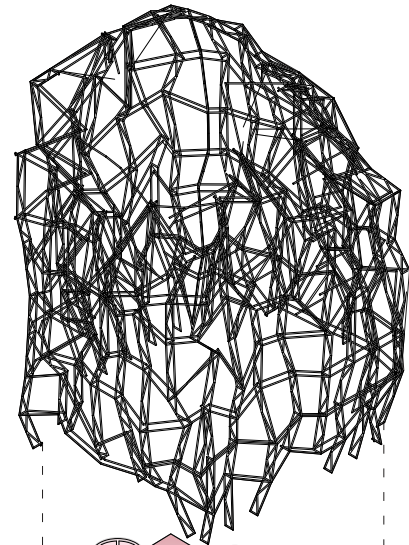


Hollow Steel Tube

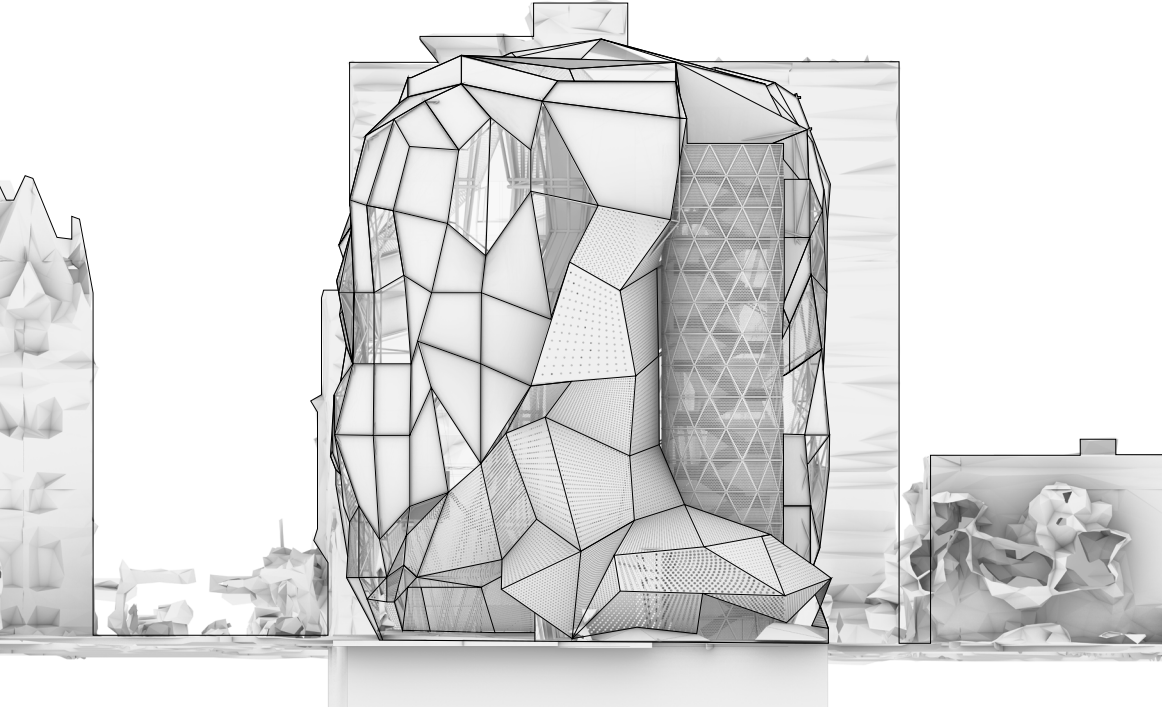
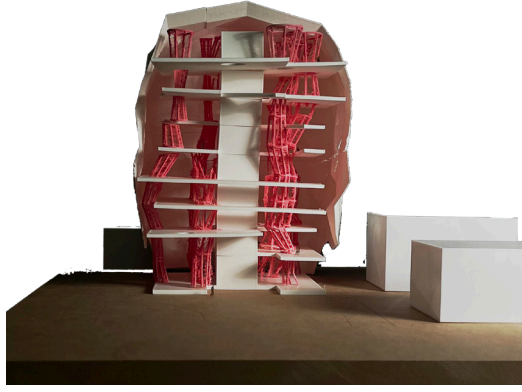
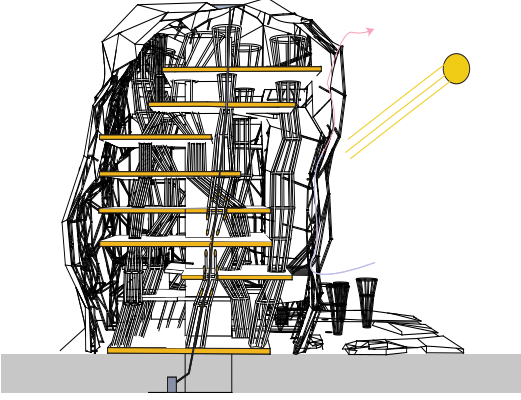
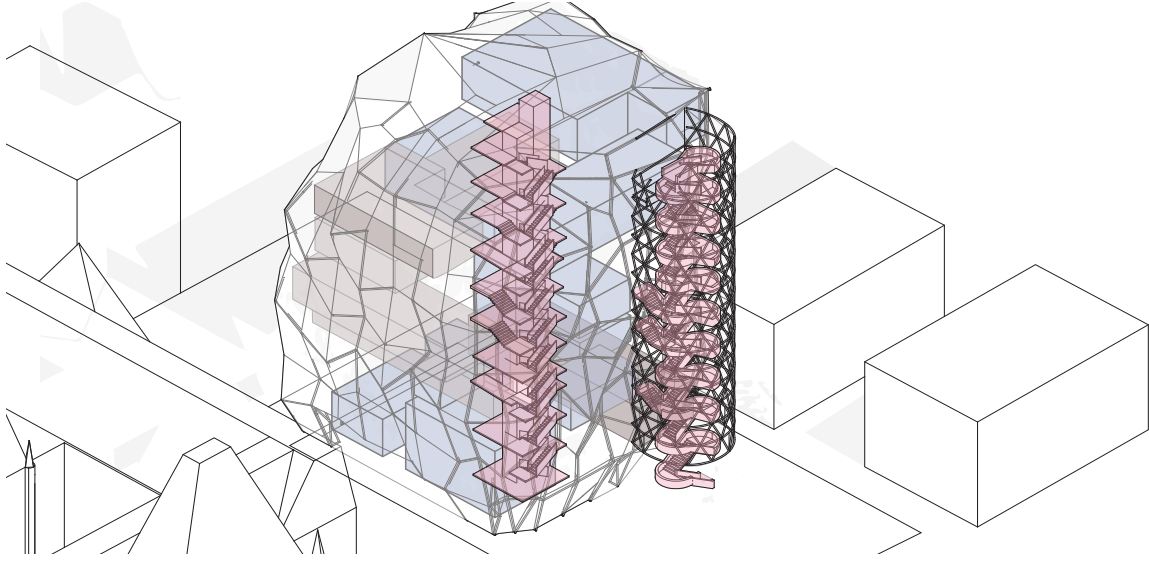
Threaded Rod

Slide Bearing Retainer

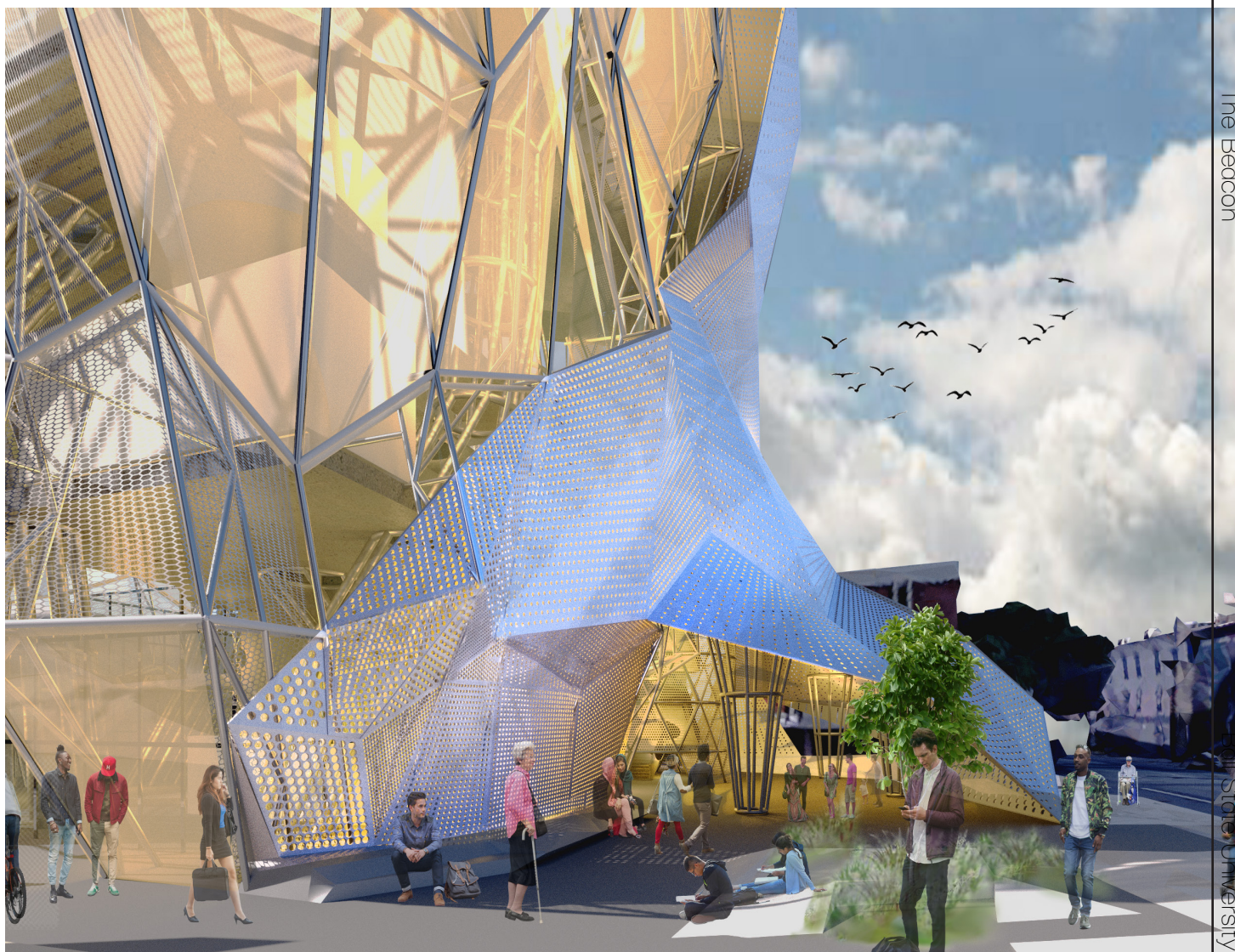
Truss Cord



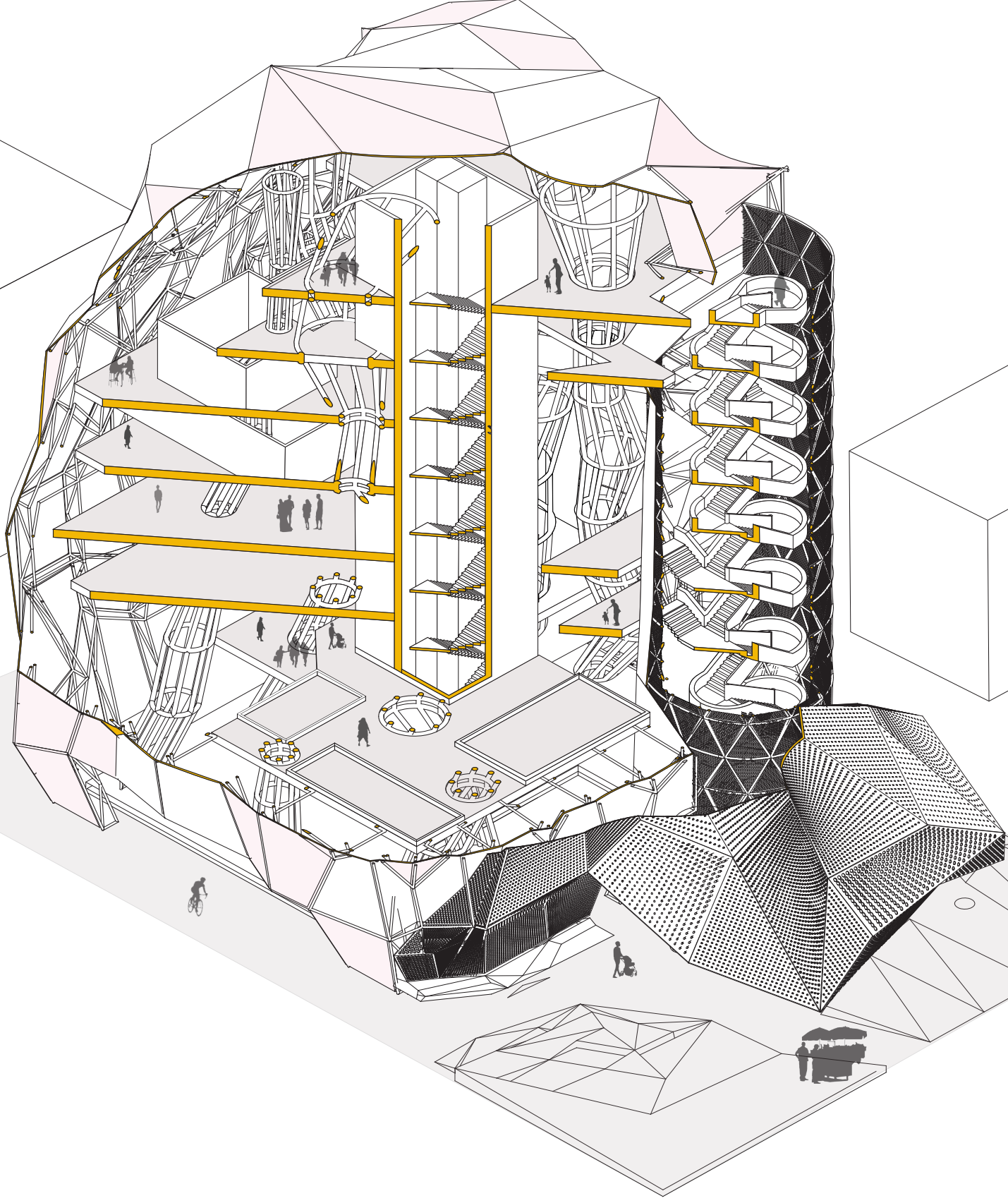














# Personal Work

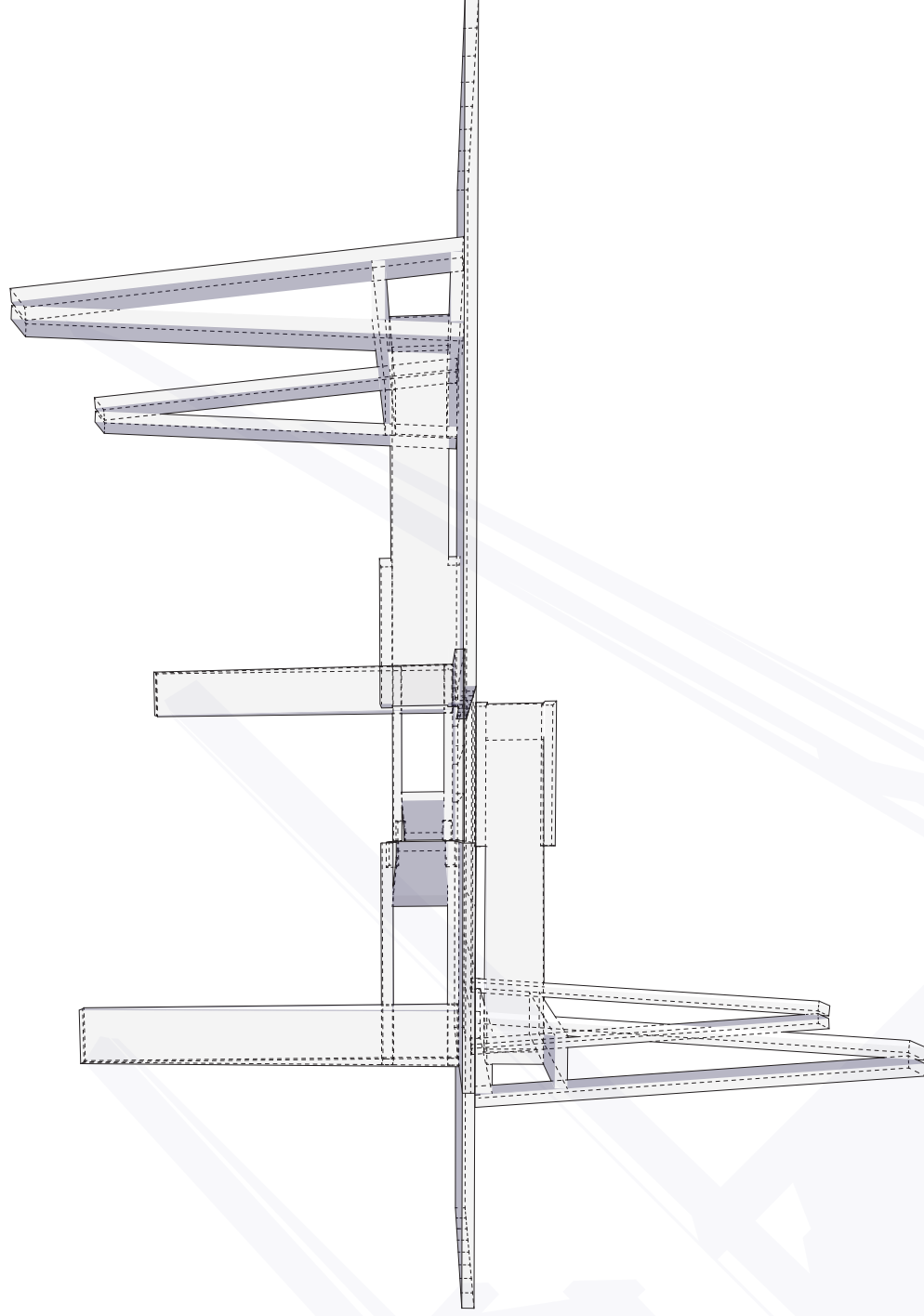
## Selected Works

This curated selection of my personal works reflects a journey of creative exploration spanning furniture design, object crafting, and the art of casting. Each piece—a meticulously designed table, an array of thoughtfully crafted objects, a sculptural lamp—embodies my passion for merging functionality with artistic expression, particularly through casting techniques. The table stands as a testament to my dedication to form and function, featuring clean lines and balanced proportions.

In addition to the table, this collection includes a diverse array of objects that highlight my meticulous attention to detail and tactile sensibility. Each item is a testament to the versatility and creative possibilities offered by casting in object design.

Moreover, the sculptural lamp exemplifies my exploration of light as both a functional necessity and a medium for artistic expression. Through casting, I've been able to imbue the lamp with unique textures and forms that enhance its visual impact and contribute to a captivating ambiance. Together, these works encapsulate my multifaceted approach to furniture and object design, highlighted by a passion for casting as a transformative technique that elevates functionality into the realm of art.





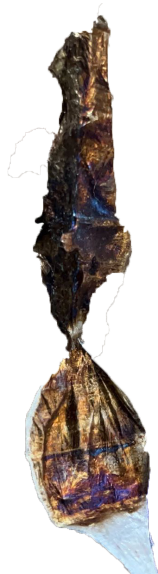




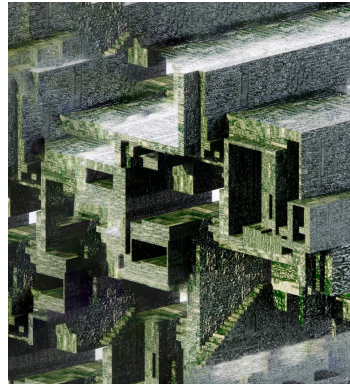
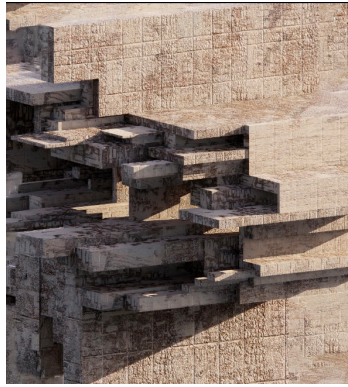












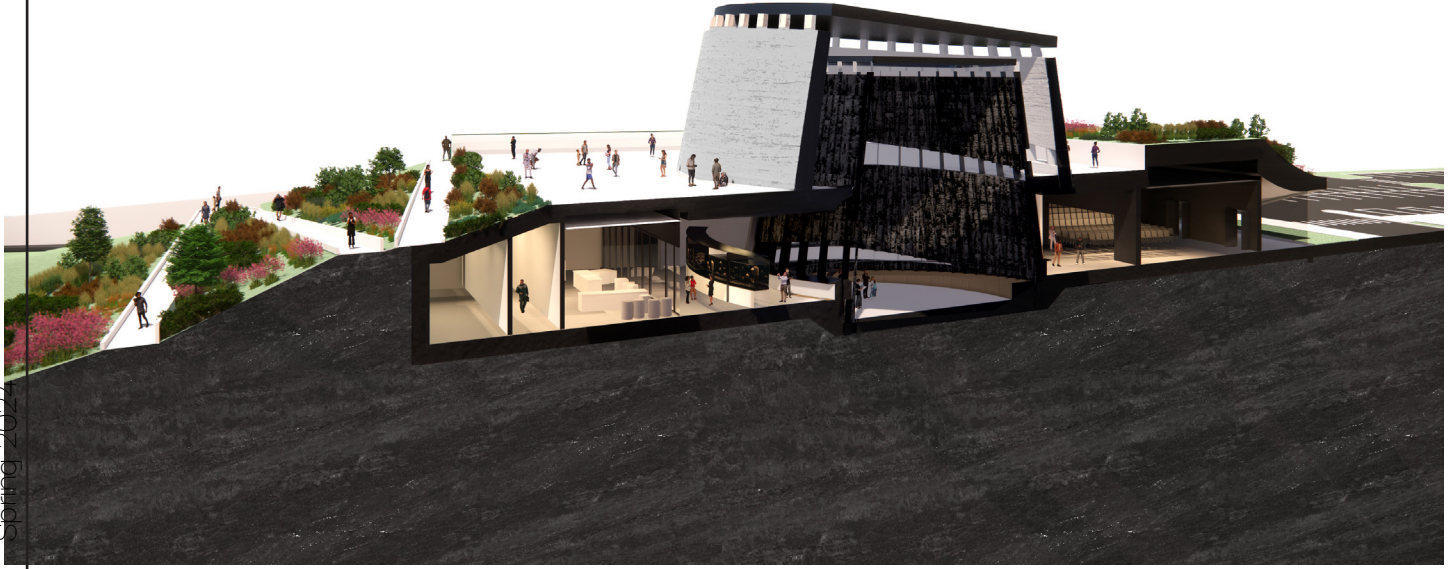
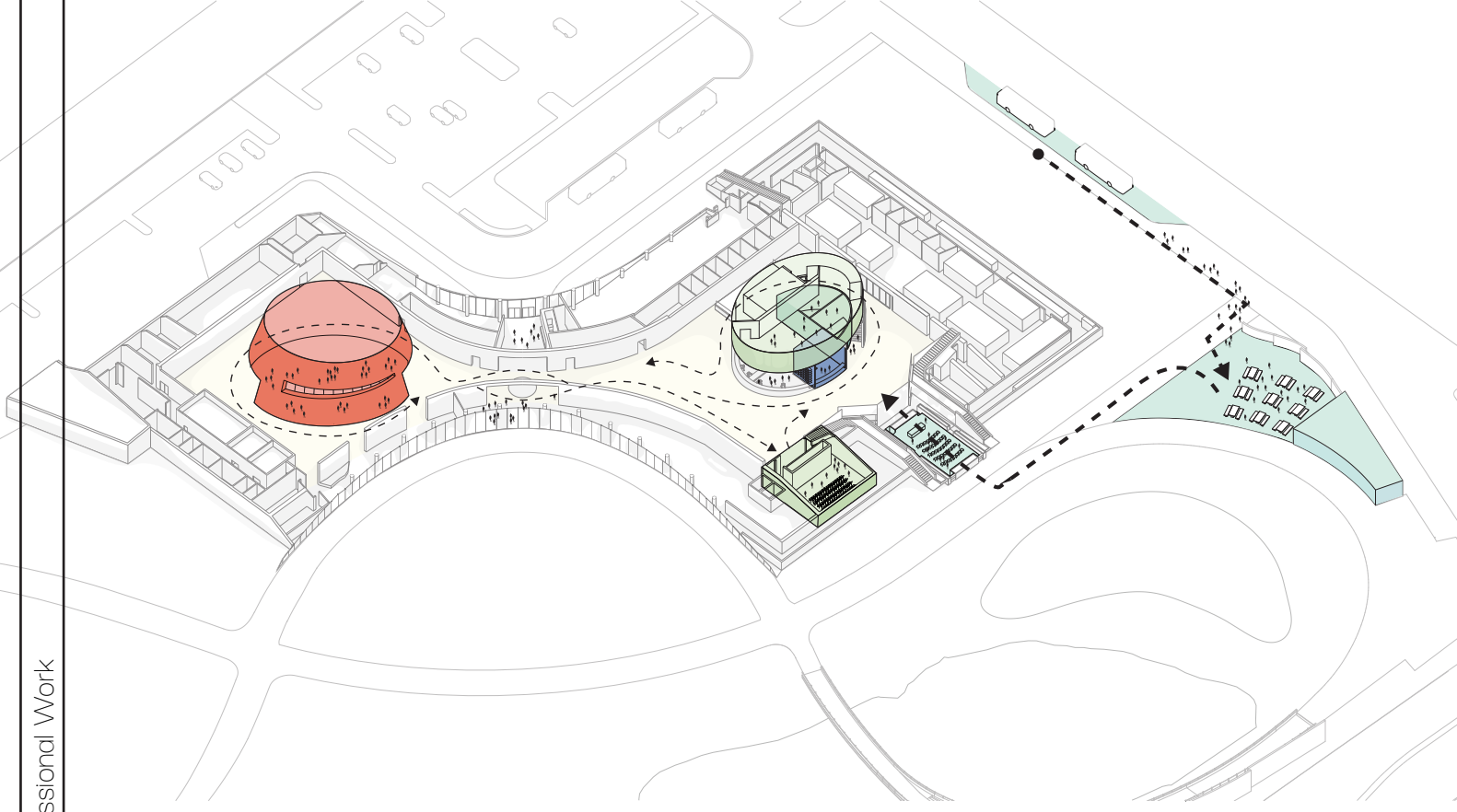


# Professional Work

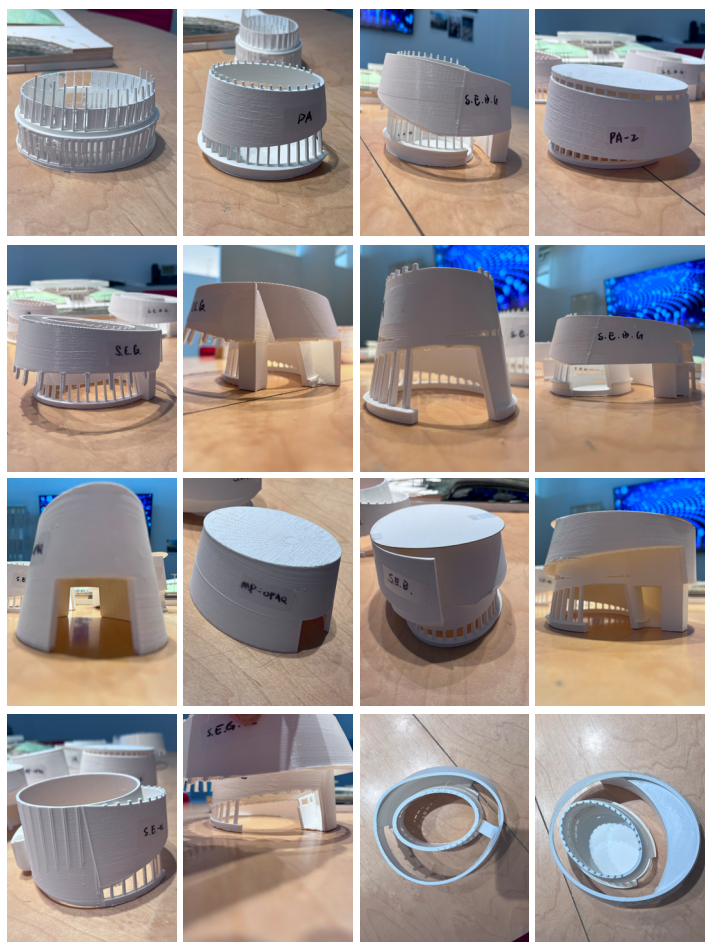
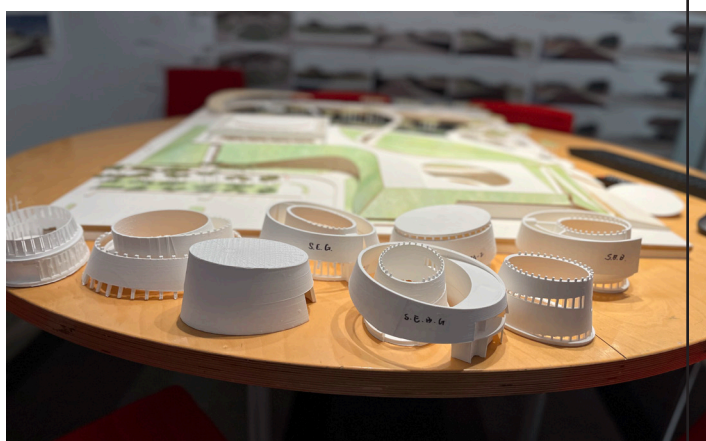
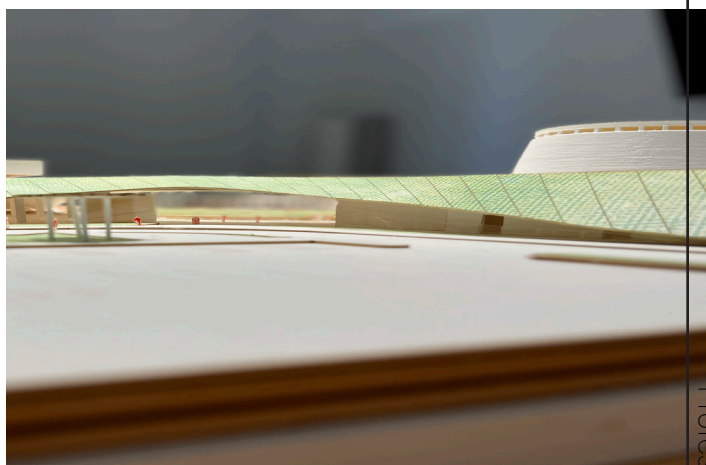
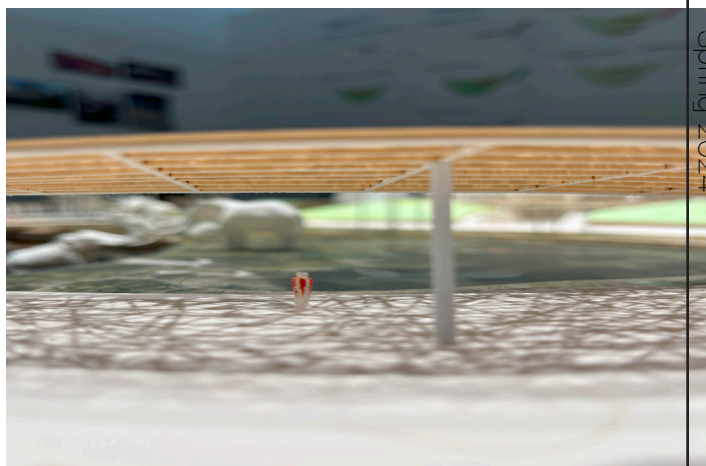
## Selected Works

This curated selection showcases my professional contributions during my tenure at Weiss/Manfredi, with a spotlight on our transformative project at the La Brea Tar Pits. Through a combination of diagrammatic representations and captivating model photography, I've documented and communicated the architectural vision and narrative of this iconic site.











Sam Meyers  
317-601-8611  
Sameyers@bsu.edu