

Spring 2024

Ryan Carlisle

Portfolio



The New Museum

Transforming a NYC Institution

Location:

New York, NY

Collaborators:

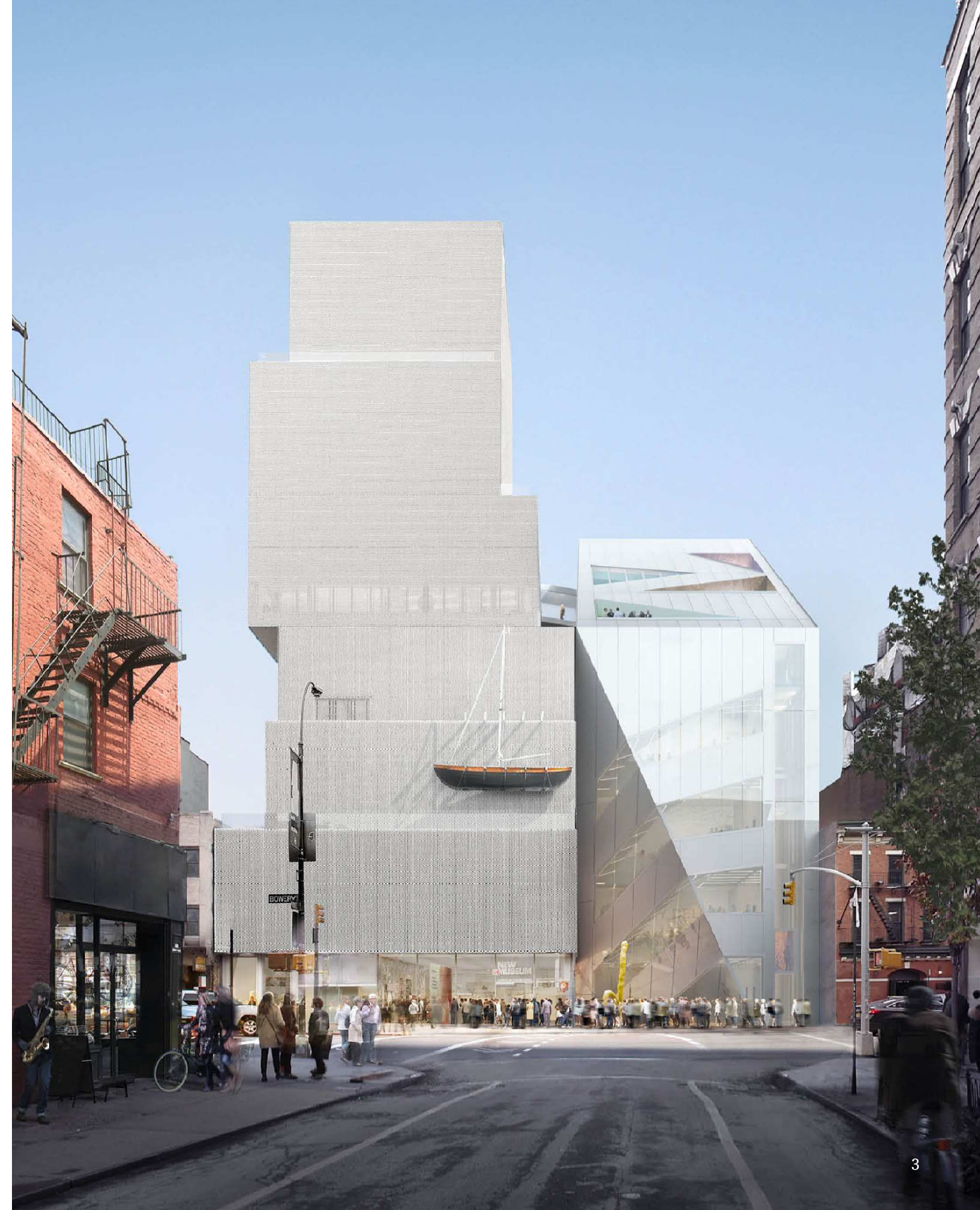
Andrew Barwick
Isil Akgul
Nathalie Guedes
Jake Forster (OMA)

I joined Cooper Robertson in Fall of 2022 in order to capitalize on an incredible opportunity to oversee the construction administration of The New Museum Extension.

Since the original SANAA-designed building opened on the Bowery in 2007, the museum has cemented itself as an institution for the arts in downtown Manhattan. As attendance increased over the years, the museum faced some particular spatial challenges. The OMA-designed extension improves the flow of circulation, the spatial dimensions of the galleries, and the quality-of-life of the museum office spaces. The original museum and its extension both maintain a distinct architectural autonomy. Notably,

while the original museum is largely opaque, the extension is much more transparent. Circulation throughout the seven floors of the extension is exposed through a prominent stair, allowing pedestrians to glimpse the vibrancy and activities within.

As a critical team member of this project, I participate in frequent site visits and contribute to the submittal process. In collaboration with OMA, I have helped develop the design of multiple interior spaces. These include, but are not limited to, the coat-check and lobby sequence within the original museum, the restaurant and retail space of the extension, and the new studio space for NEW INC, an incubator for the arts.



How do you integrate a restaurant into the experience of an art museum?



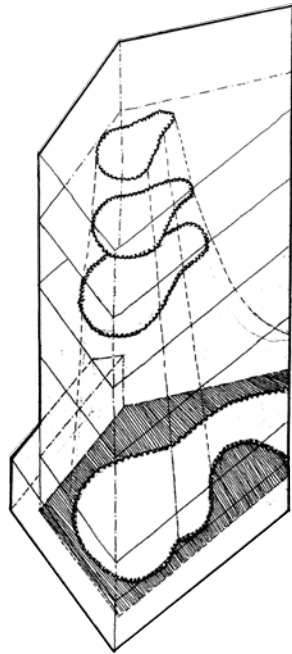
What if the dining space was its own dynamic installation space?



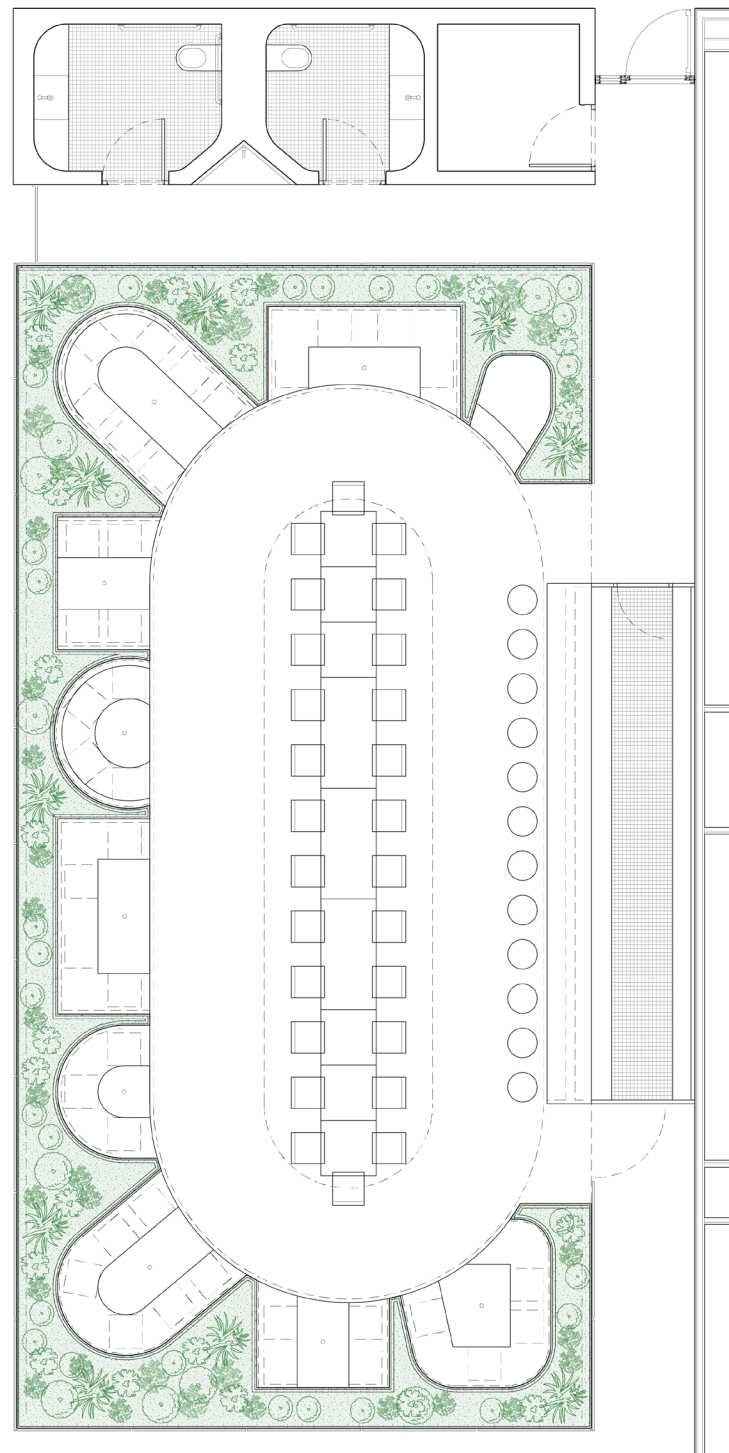
New Museum Restaurant Exterior, OMA



New Museum Restaurant Exterior, OMA



Bruder Klaus Chapel



Restaurant, Enlarged Floor Plan



New Museum Restaurant Interior, OMA



New Museum Restaurant Interior, OMA

El Paso Children's Museum

Establishing Brand Identity for an Emerging Cultural Institution

Location:

El Paso, TX

Collaborators:

Craig Dykers
Elaine Molinar
Emile Alongi
Kurt Marsh
Joyce Hanlon
Donesh Ferdowsi
Ava Amirahmadi

Awards:

Competition Winner

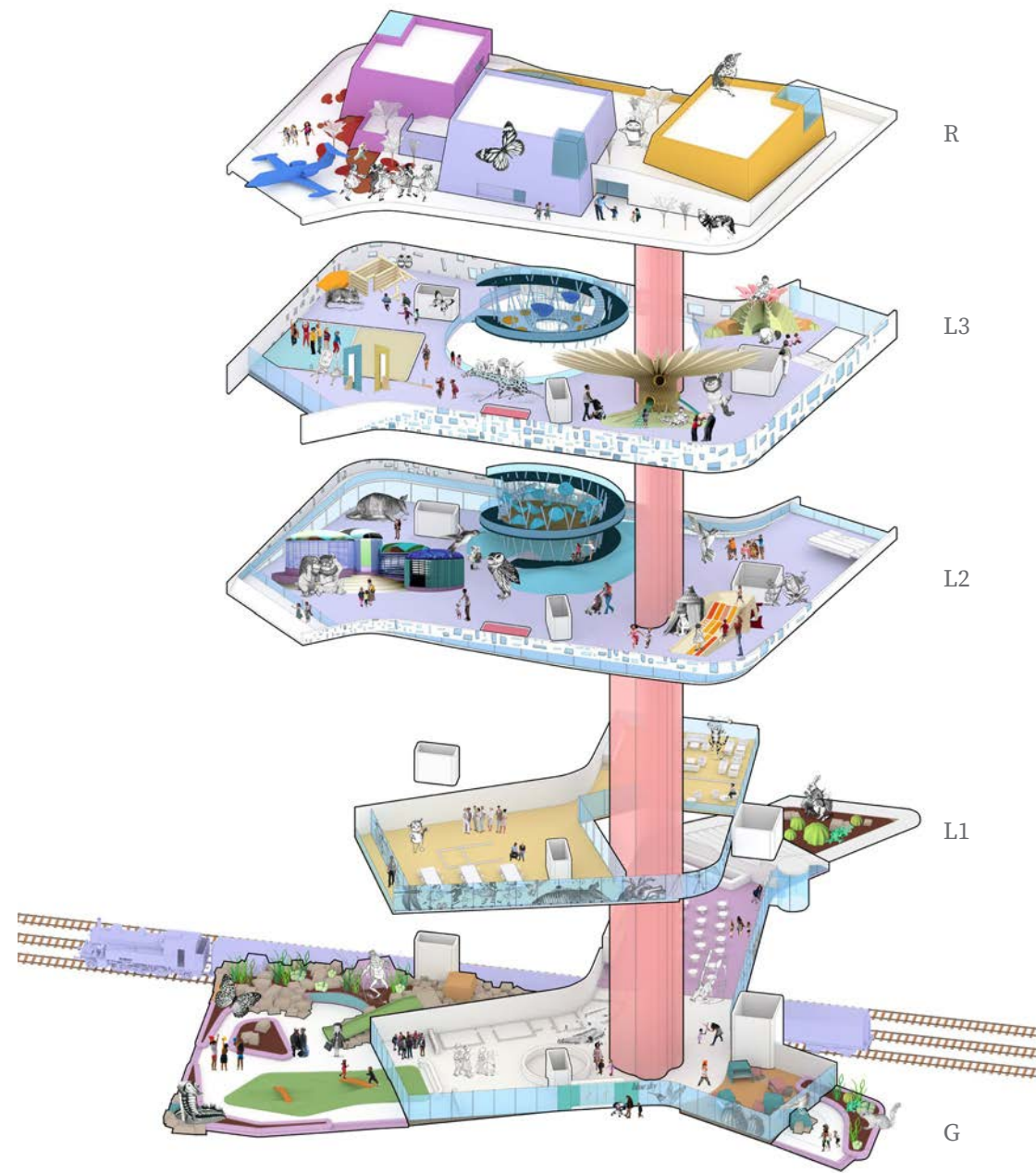
This winning entry for the El Paso Children's Museum is situated right in the heart of the city's Downtown Arts District. Our team developed a proposal for a vaulted museum lifted from the ground. This established a dynamic public space and interactive garden below. The museum emulates a cloud floating above the desert terrain of Texas, inviting families to enter and explore.

The Children's Museum aims to welcome and engage children and families from El Paso, Ciudad Juarez, the American Southwest, and the Mexican states of Chihuahua and Sonora. The dynamic exhibits housed within seek to spark and inspire curiosity, exploration and a better understanding of the local community.

Many key features of the design speak to the rich architectural legacy of downtown El Paso in the hopes of contributing to the city's thriving future. The landscape provides public amenities such as a dynamic streetscape, gathering areas, and gardens that embrace local desert flora.

The design team thoroughly explored how a museum itself can become a learning tool, maximizing on open-ended and exploratory play. During this competition I focused on developing key aspects of the massing, including the roofscape and the entry sequence. Once the overall design was set, I collaborated with our competition team in order to envision the character and layout of the individual exhibits throughout the museum.





Museum Axonometric



View from History Museum, Doug + Wolf

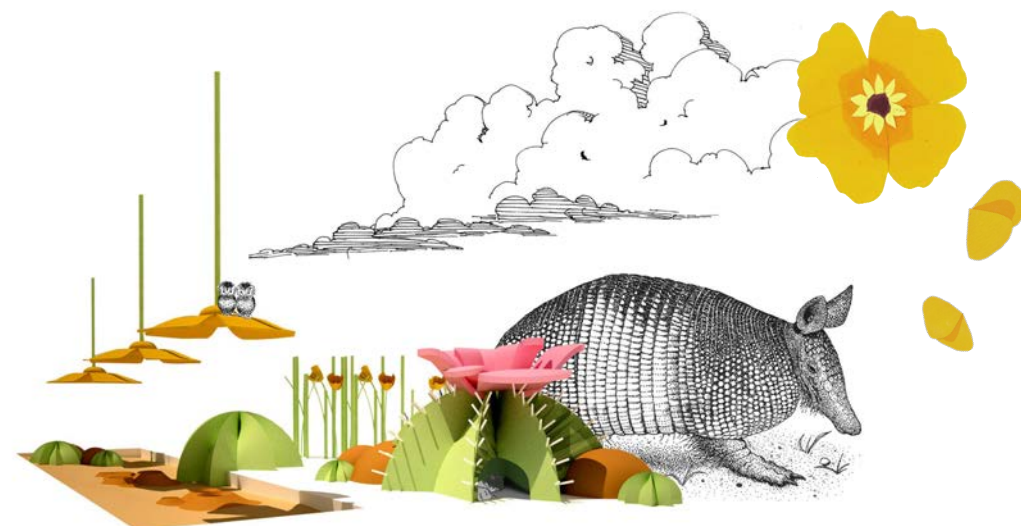


Museum Entrance, Doug + Wolf



Central Climber, Doug + Wolf

How can the exhibits inspire and engage the children of El Paso?



What if the exhibits leveraged the local flora and fauna of their surroundings?



Central Atrium, Doug + Wolf



Museum Arrival, Doug + Wolf

CareFest 2023

Cultivating an Engaging and Empathetic Live Experience

Location:
Los Angeles, CA

Collaborators:
Karen Popa

Caring Across Generations is a national organization of family caregivers, care workers, disabled people, and aging adults working to transform the way we care in this country.

CareFest brings together leaders in entertainment, philanthropy, business, and government together with care advocates to collaborate on issues important to Caring Across Generations. CareFest 2023 exemplified a commitment to an inclusive environment ensuring accessibility and disability justice are essential aspects of the future of care.

With Overland Entertainment, I assisted in the conception and realization of the main event space for CareFest. I worked with

the existing Caring Across Generations brand platform and designed a series of digital and physical backdrops that were utilized throughout the entire conference. The stage had to accommodate a variety of speakers as well as the Care Catalyst Awards.

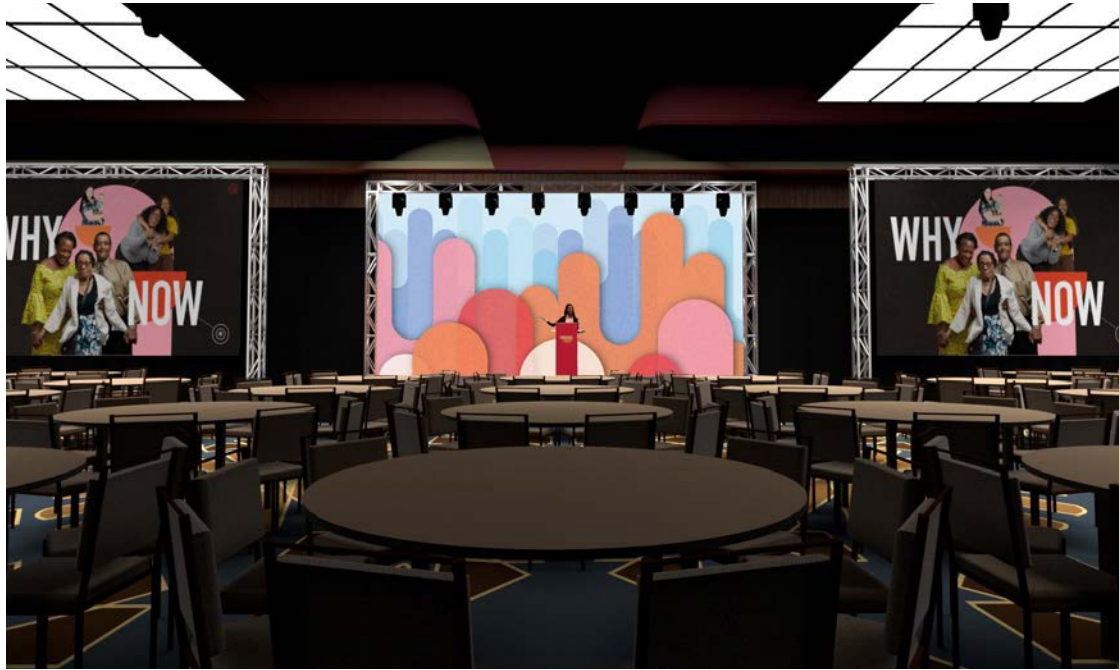
Working with creative directors, our team transformed the space into a dynamic and visually distinct conference experience. Space planning, lighting design, and graphic design were all considered throughout this design process.



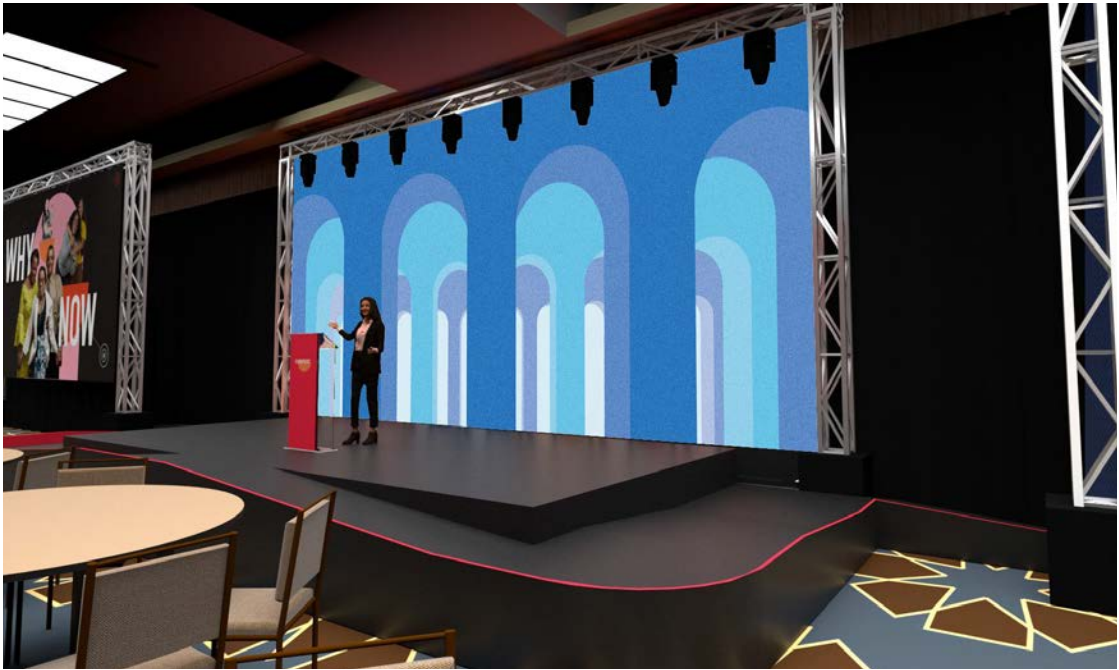
CareFest Main Stage



CareFest Main Stage



CareFest Main Stage, Mockup



CareFest Main Stage, Mockup



CareFest Main Stage, Mockup



CareFest Main Stage, Mockup

Retail Flagship

Building a Brand through Retail Design Direction

Challenge:

To work with an emerging NYC-based fashion and lifestyle brand to define the design direction for retail environments.

Context:

The exercise began with the client's existing fashion portfolio and brand platform. Through frequent collaboration, we began the process of building a spatial language. The materiality of the clothes themselves as well as the places that served as the sources of inspiration for the collection were considered.

A series of fabric baffles defines alcoves for clothing racks. The subtle movement and opacity of these divisions evokes the textures of the collection itself. The opposing wall is enveloped by richly dark millwork which provides a variety of nooks and displays for products.



Brand Platform Collage



Initial Concept Render

Landscapes of Loss

Innovating a New Paradigm for Urban Cemeteries

Location:

New York, NY

Instructors:

Judy Birdsong
John Blood
Charlton Lewis

Duration:

8 Weeks

This independent studio examined the phenomenological aspects of American cemeteries and their often-discordant relationship with urban contexts. The cemetery island proposes a new form of ritual that seeks to reexamine how we perceive architecture's role in death and remembrance.

Chronic stresses in the funerary industry will result in new paradigms for cemeteries, especially those that operate in urban contexts. Concerns regarding the environmental impact of traditional burial as well as limited burial plots have prompted new rituals regarding death. A cemetery, largely liberated from the physical requirements of traditional body storage, has the potential to promote

emotional intelligence and shift the perception of cemeteries from taboo spaces to vital emotional loci within and urban fabric.

This cemetery is situated on Mill Rock, an uninhabited island located in the East River. The island consists of a series of landscaped and architectural mounds, a form often associated with burial. The inhabitants of the cemetery are housed in a series of vertical columbariums. As the cemetery grows, the columbariums continue to rise into the sky. The gradual ascension of the cemetery will parallel the construction in the city as a reminder of how death and life operate in close proximity to one another in an urban context.

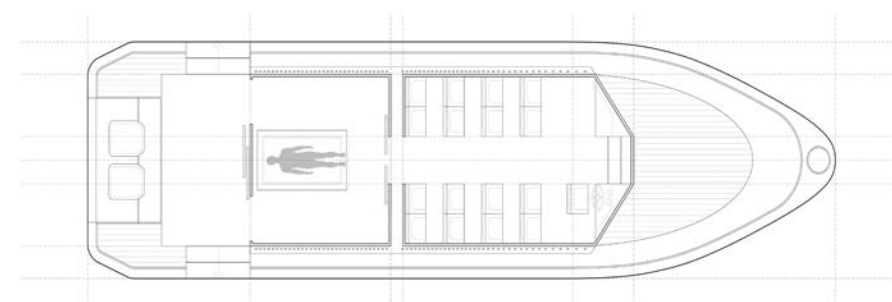
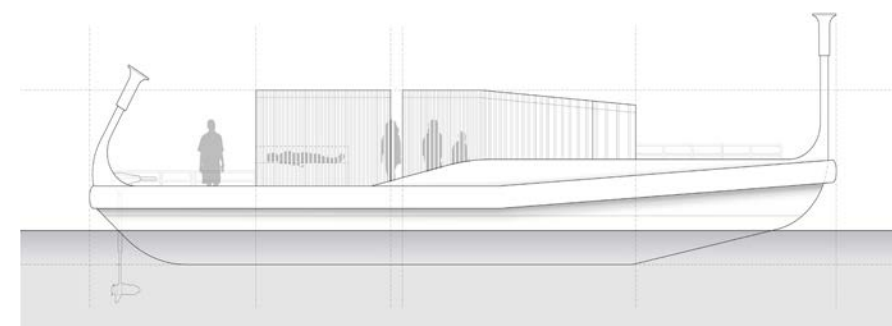




A Cemetery Island

The cemetery island is sited within a particular section of the East River known as Hell Gate. The mass of the island builds upon the existing Mill Rock. As an island, the cemetery becomes a singular destination. The somber program would creep into the consciousness of the surrounding context.

1. P.S. 146 School
2. NYC Health + Hospitals
3. Mill Rock
4. Upper East Side
5. Recovery Center
6. Astoria
7. Condo Development



Island Ferry

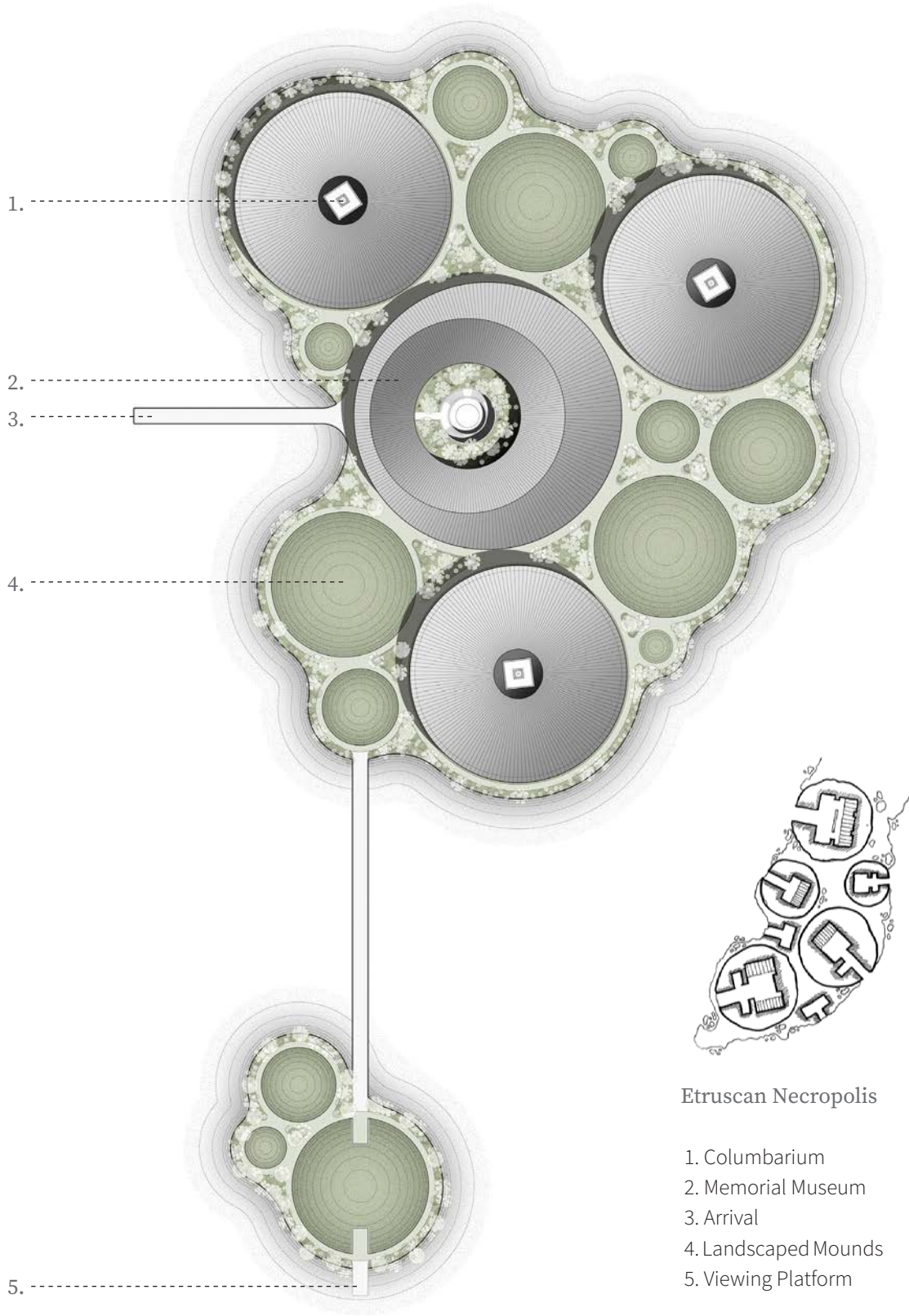
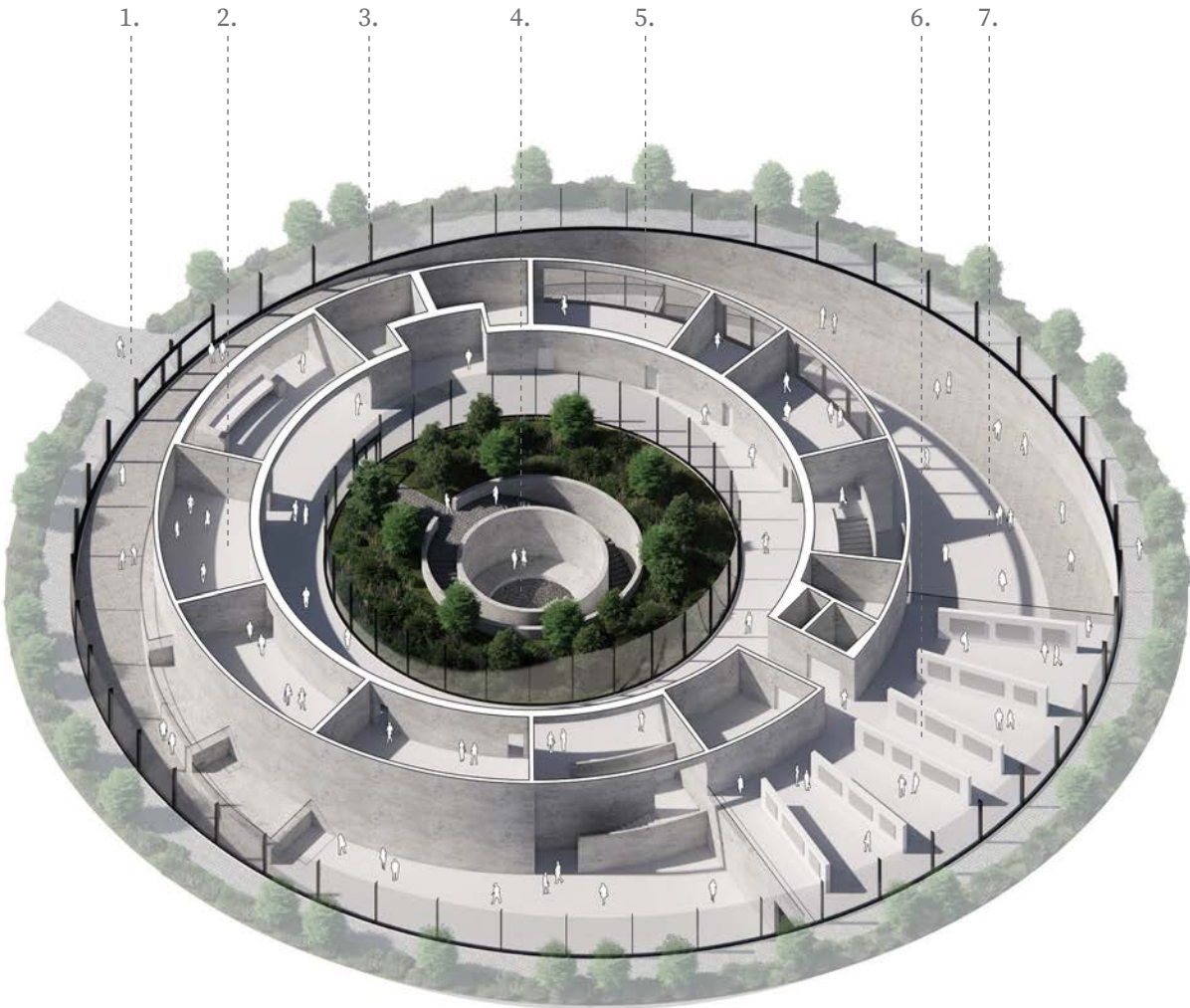


Site Model

Memorial Museum

Upon arrival to the island, visitors are presented with a museum space that provides education on the history of burial in New York City. Visitors to the museum pass through monolithic walls or descend down a gradual ramp in order to access the various exhibits throughout.

- 1. Arrival
- 2. Small Exhibition
- 3. Restrooms
- 4. Meditation Pavilion
- 5. Offices
- 6. Rotating Exhibition
- 7. Main Exhibition



Etruscan Necropolis

- 1. Columbarium
- 2. Memorial Museum
- 3. Arrival
- 4. Landscaped Mounds
- 5. Viewing Platform

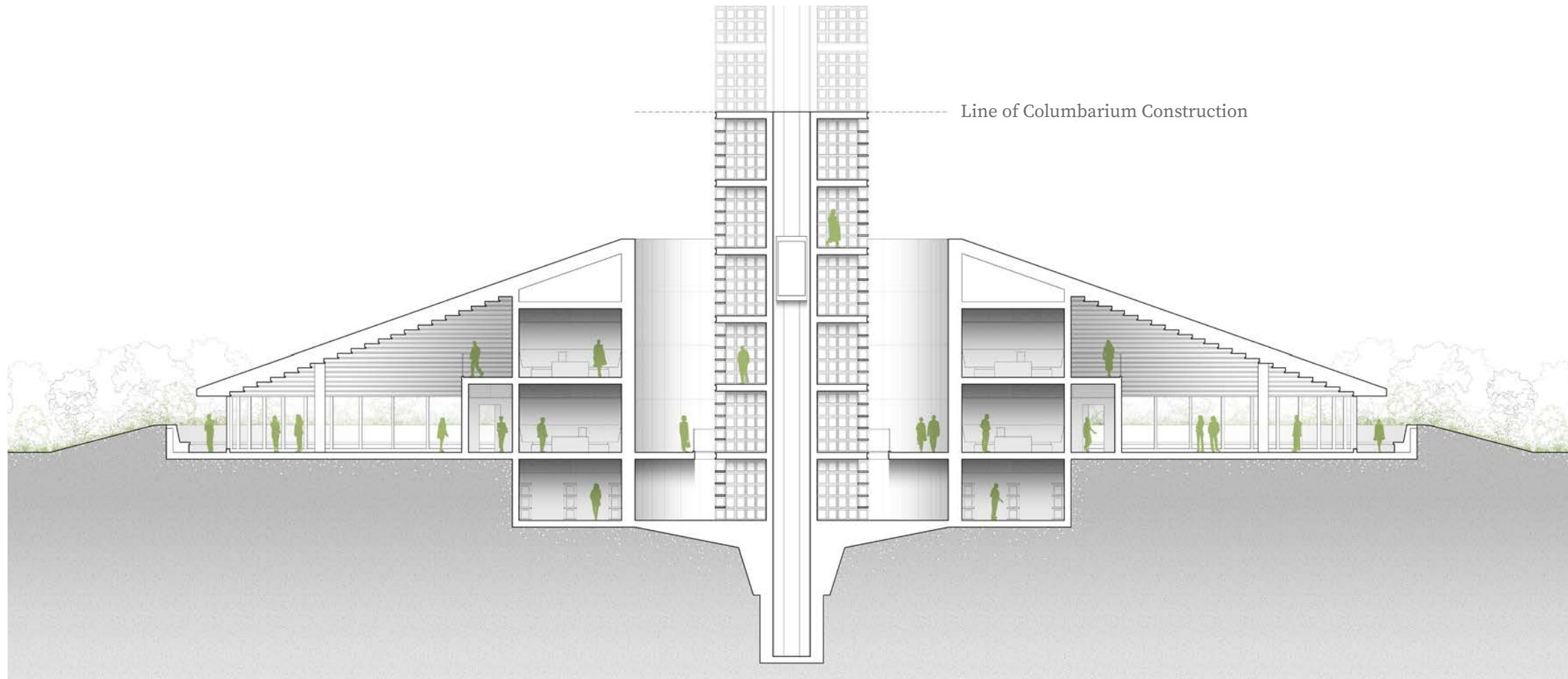


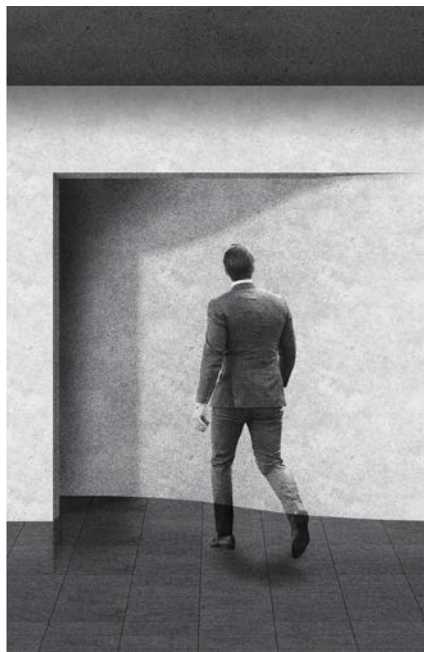
Cemetery Museum Interior



Columbarium Interior

As time advances, the columbarium towers will continue to grow. The gradual ascension of the cemetery will parallel the construction in the city as a reminder of how death and life operate in close proximity to one another in an urban context.





Remnants of Light

Documenting Texas through Pinhole Photography

In essence, pinhole cameras are primitive vessels for the slow absorption of the world. While they serve seemingly simple function of recording light through a minuscule hole, the results can transcend the aesthetic expectations of traditional photography. The photograph, a two dimensional image can somehow represent an array of experiences and events that take place over an afternoon, or even a month.

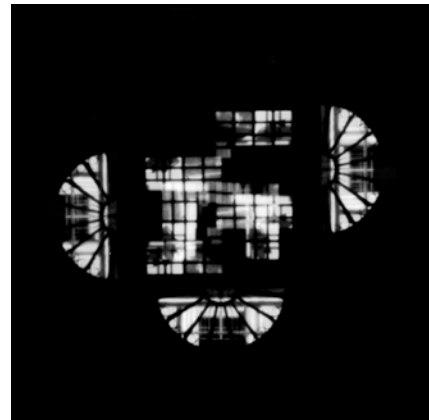
The following photos are experimentations in examining the path and ritual of the sun's movement through heliographs. A heliograph is an early method of photoengraving that records the duration and intensity of the sun, which physically etches its presence on the paper. The

sun isn't the only author of these photos. Splotches of water from sudden storms dot the image. Fierce Texas wind result in slight distortions in the paper. The result is a physical and primordial record of the elements over a month's time in Marfa.

The subsequent photos capture the contrasting stillness and impermanence seen throughout Texas. The subjects in the photos move, often times leaving the frame entirely. Their features are distorted, their being often leaving a faded ghost. The subjects that maintain their clarity are inanimate. Their unchanging nature over a few minutes or an afternoon serve as a reminder of their permanence, and their legacy after we are no longer able to document them.



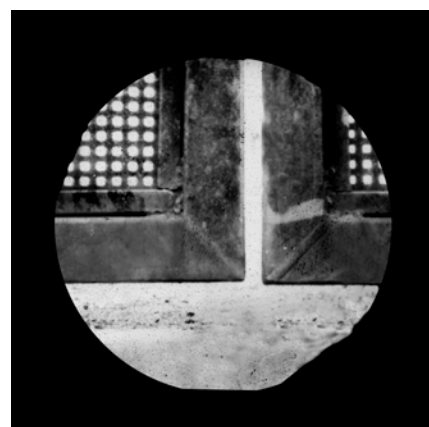
“In essence, pinhole cameras are primitive vessels for the slow absorption of the world...a physical and primordial record of the elements”



“The subjects in the photos move, oftentimes leaving the frame entirely. Their features are distorted, their being often existing as a mere faded ghost”



“Transience, liminality and unpredictability are all inherent to the final image.”





ryanbcarlisle@gmail.com
512.565.1128