



**KYLE REID**

PORTFOLIO 2021

# ARCHITECTURE

1 - 14



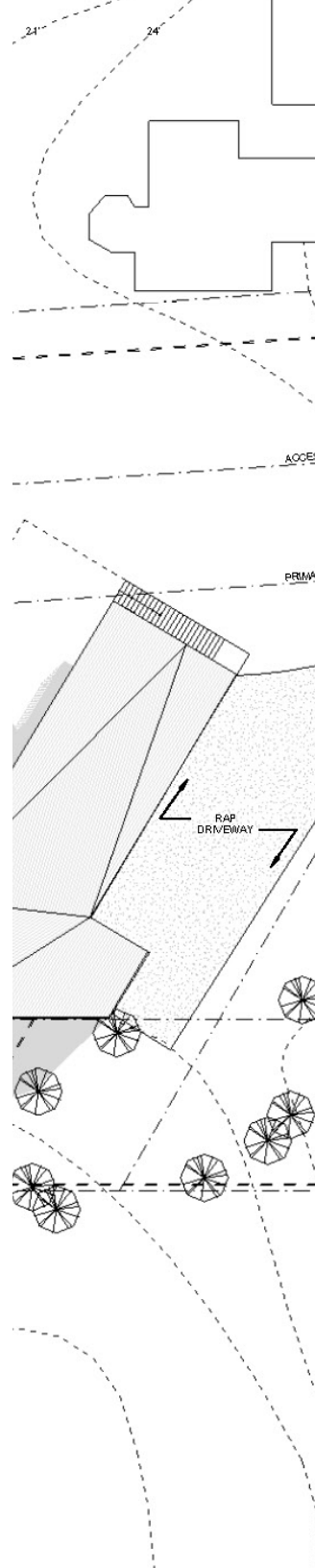
## MODULAR COMMUNITY

1 - 6



## PATTERN PLAYGROUND

7 - 10



## LEVY RESIDENCE : MIMIC

11 - 14

# URBAN PLANNING

15 - 28



# PURIFY LSP

15 - 18



# AFFORDABLE NEWARK

19 - 22



# ACCESO AL AGUA

23 - 28

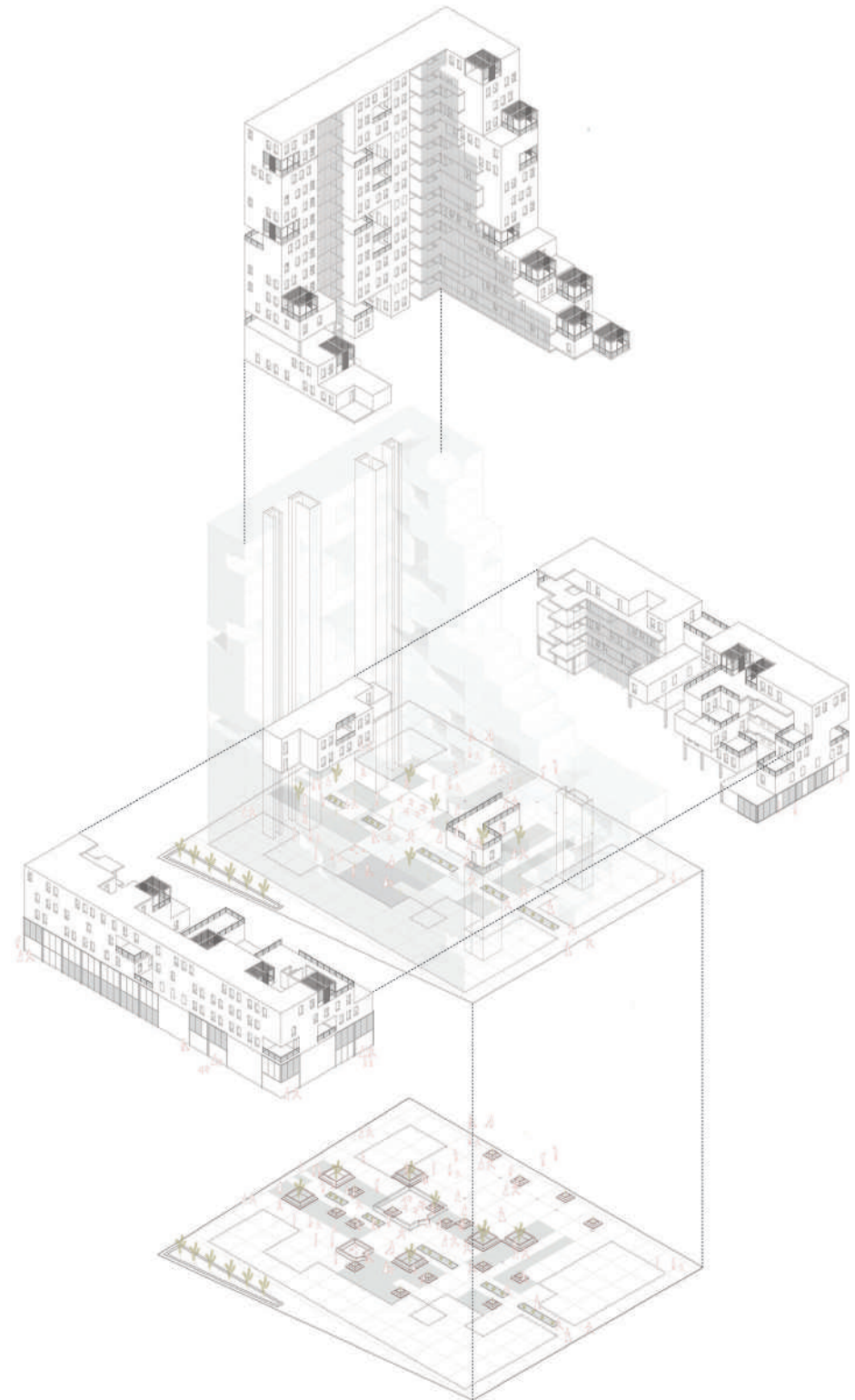


# MODULAR COMMUNITY

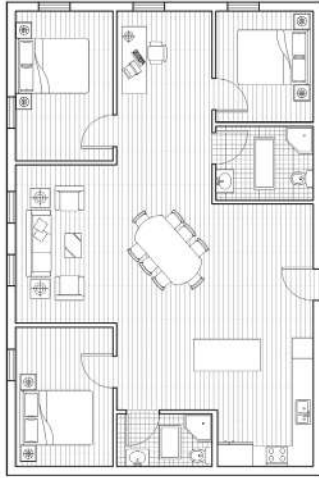
Housing | Newark, NJ

Fall 2018 | William Prince  
Partnered with Jihye Son

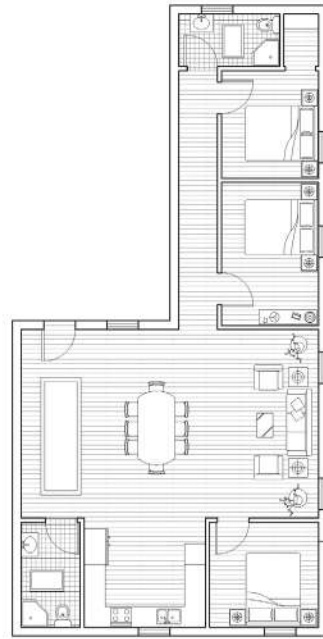
This housing project focuses on configuring a 15'x15' modular unit square into varying unit sizes ranging from a small studio to a large family apartment. Located near Teachers Village in Newark, this complex consists of 7 different units that are easily stacked on top of one another within the respected grid lines, built upon the modular system. The project wanted to emphasize the importance of community by including various amounts of amenity spaces such as open recreation rooms, large lobbies, vast open terraces, a main central courtyard, children's playground and even a dog park.



## UNIT TYPES



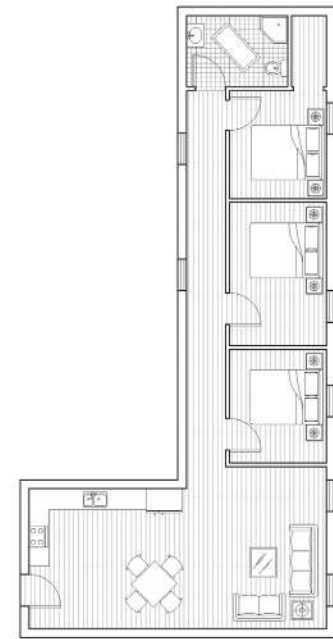
UNIT 1: 3 FAMILY



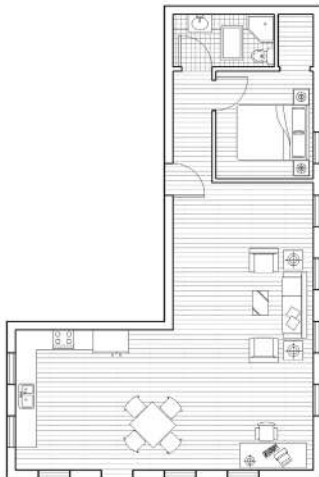
UNIT 2: 3 FAMILY



UNIT 3: 2 FAMILY



UNIT 4: 3 FAMILY



UNIT 5: 1 FAMILY

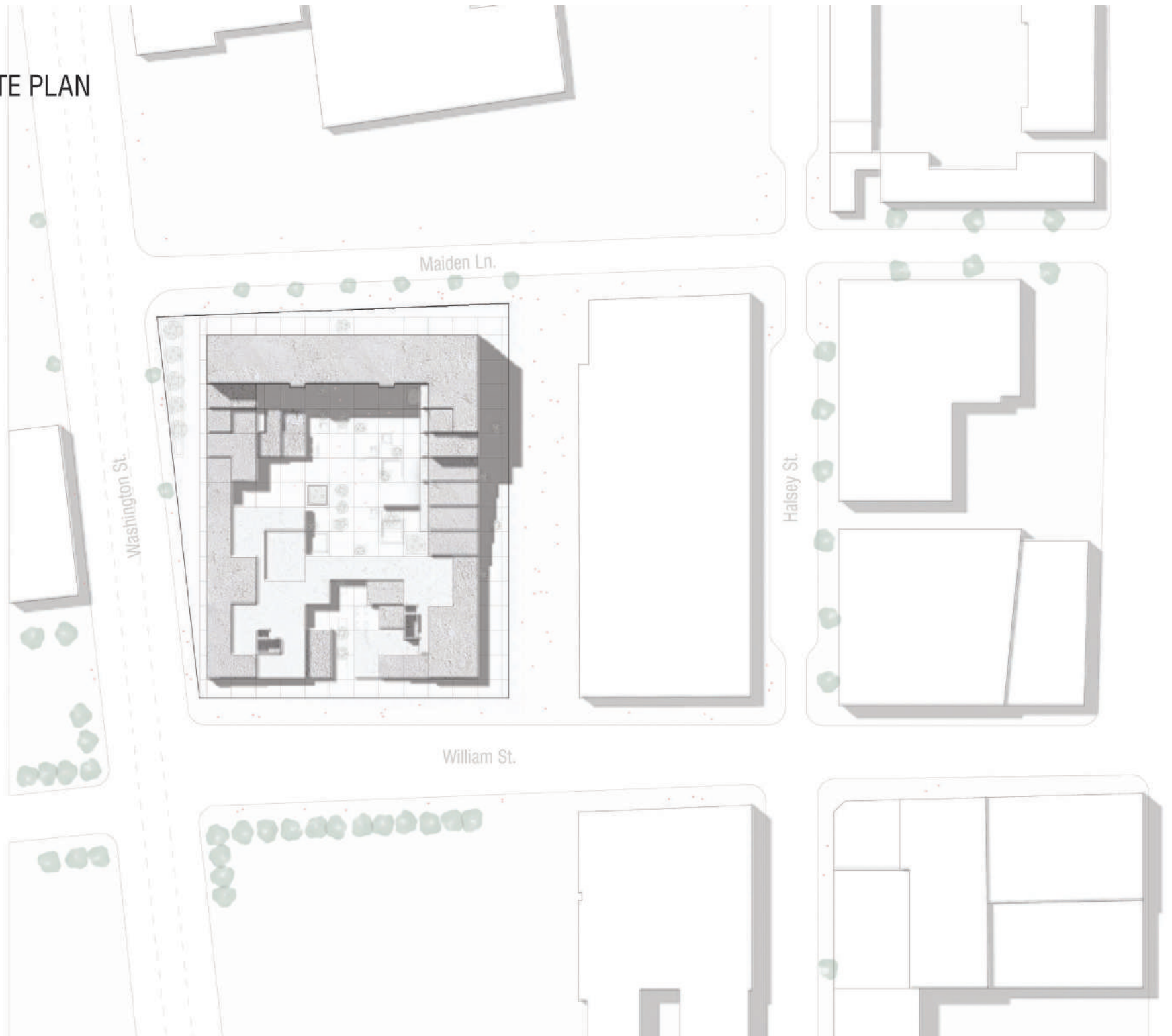


UNIT 6: 1 FAMILY

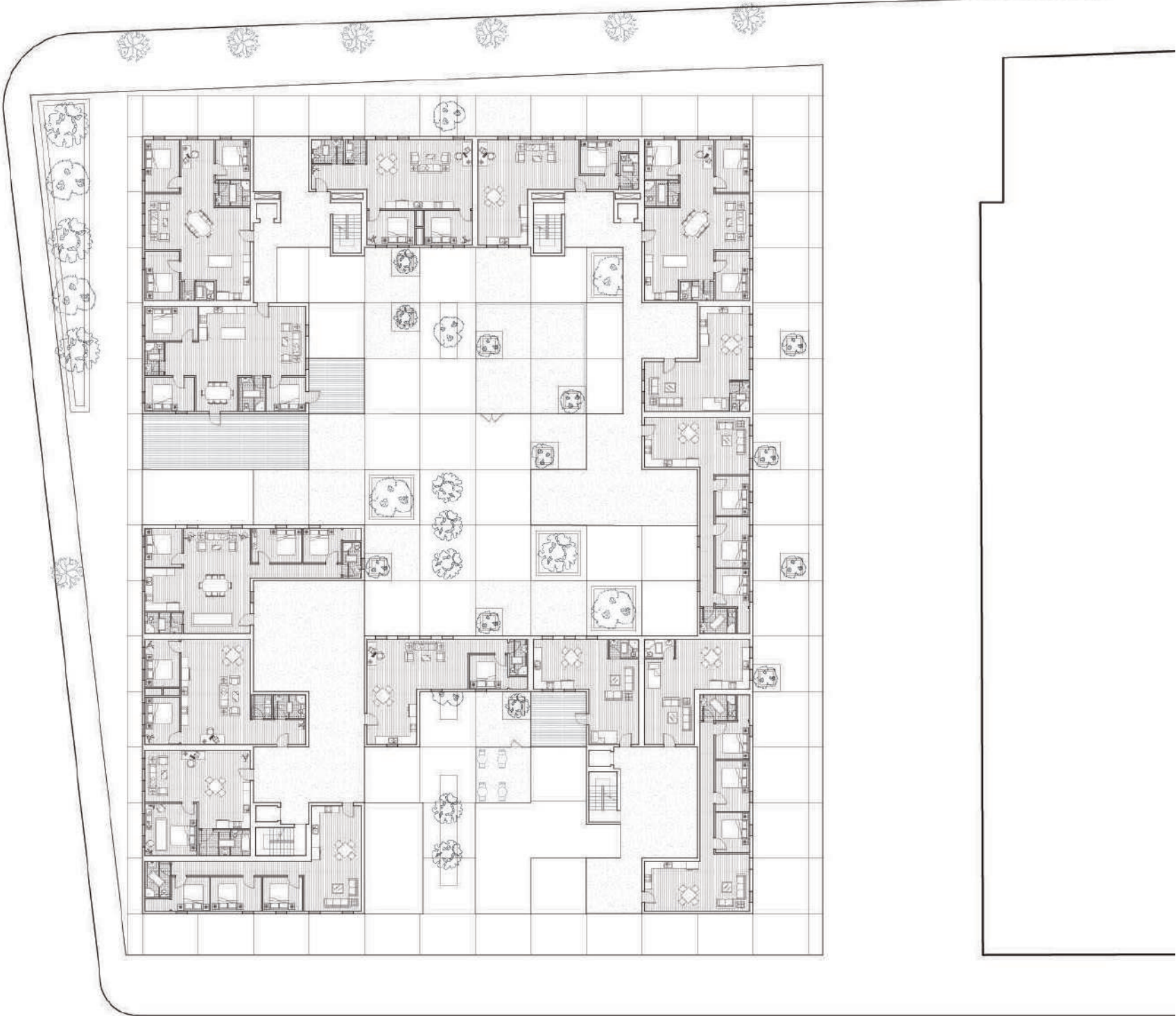


UNIT 7: STUDIO

# SITE PLAN



4TH FLOOR





# MODEL PHOTOS





## EXTERIOR SHOTS



# PATTERN PLAYGROUND

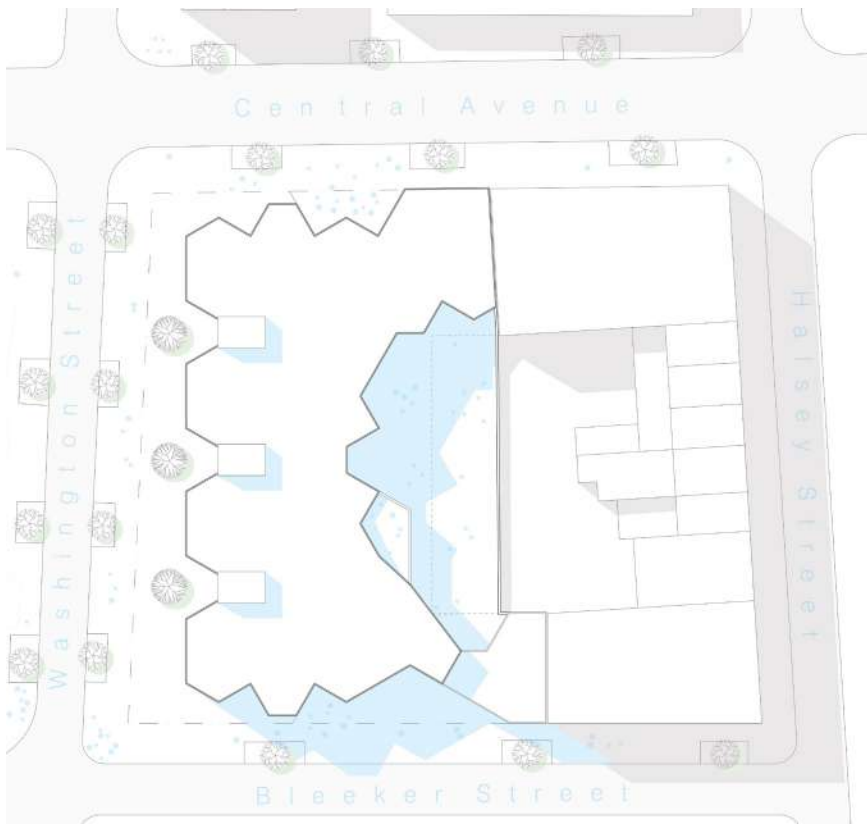
Learning Center | Newark, NJ

Spring 2019 | Andrew Varela

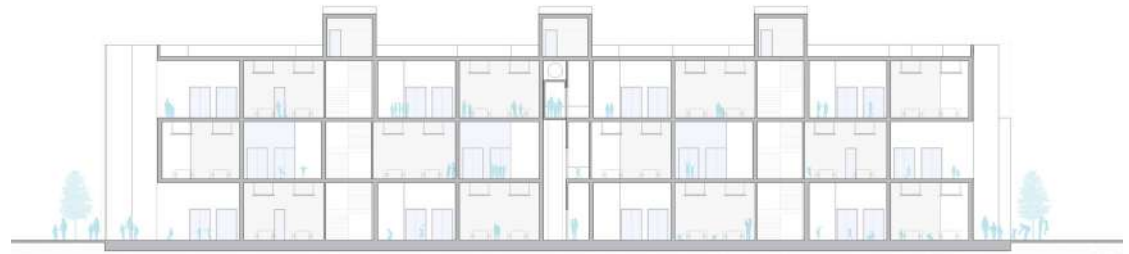
This education center (grades Pre-K through second grade) was derived solely from a pattern being the Cairo Tessellation. Studied from the beginning of the semester, the tessellation informed nearly all elements of the project from its structural grid layout, interior partitions and exterior walls, and its circulation. Each grade is located on different levels separating any potential noise disruptions and circulation issues. The school contains a library, gym, auditorium and large central atrium with a transparent view into the outdoor recess area.



Ground Floor Plan



Site Plan



Longitudinal Section



Section Perspective







Atrium Perspective



Library Perspective



# LEVY RESIDENCE MIMIC

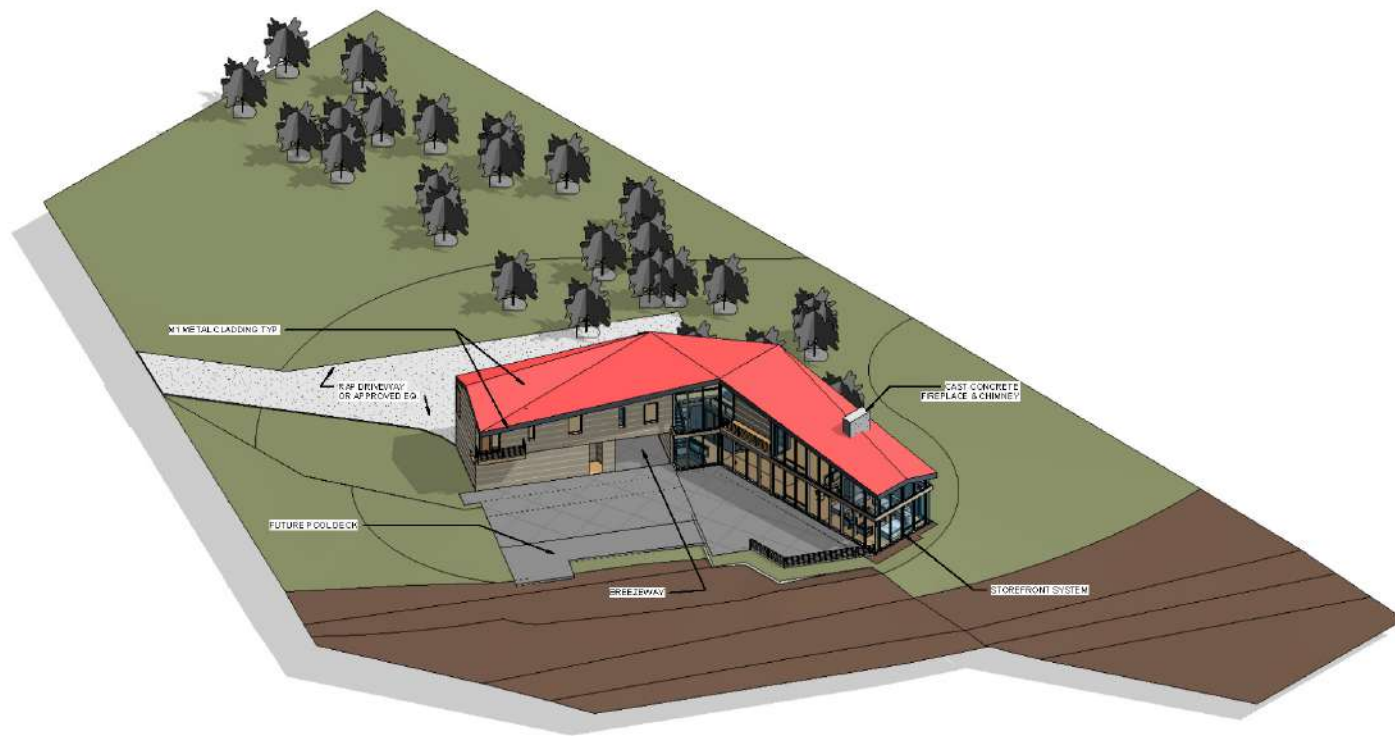
Revit Excercise | Hampton Bays, NY

Summer 2020 | Caroline Grieco  
Partnered with Radia Ali & Prashant Patel

In the third and final construction class at NJIT, the class is tasked to replicate a full CD set of an existing building. The class group (Radia Ali, Prashant Patel) replicated Marvel Architects Levy Residence in Hampton Bays, NY. This project was replicated using Revit with the assistance of the existing CD set. Work was divided per drawing type.







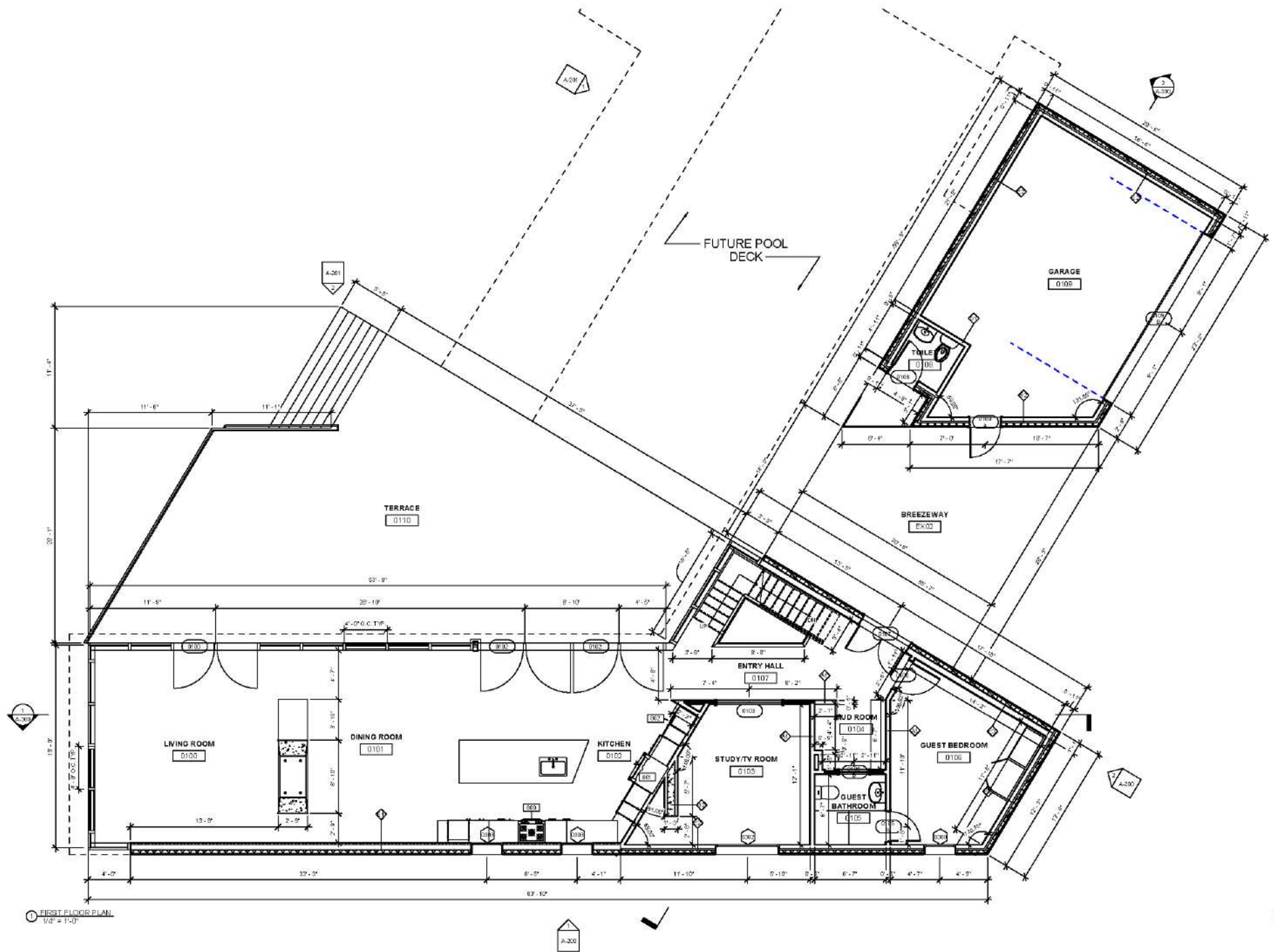
1 AXONOMETRIC VIEW

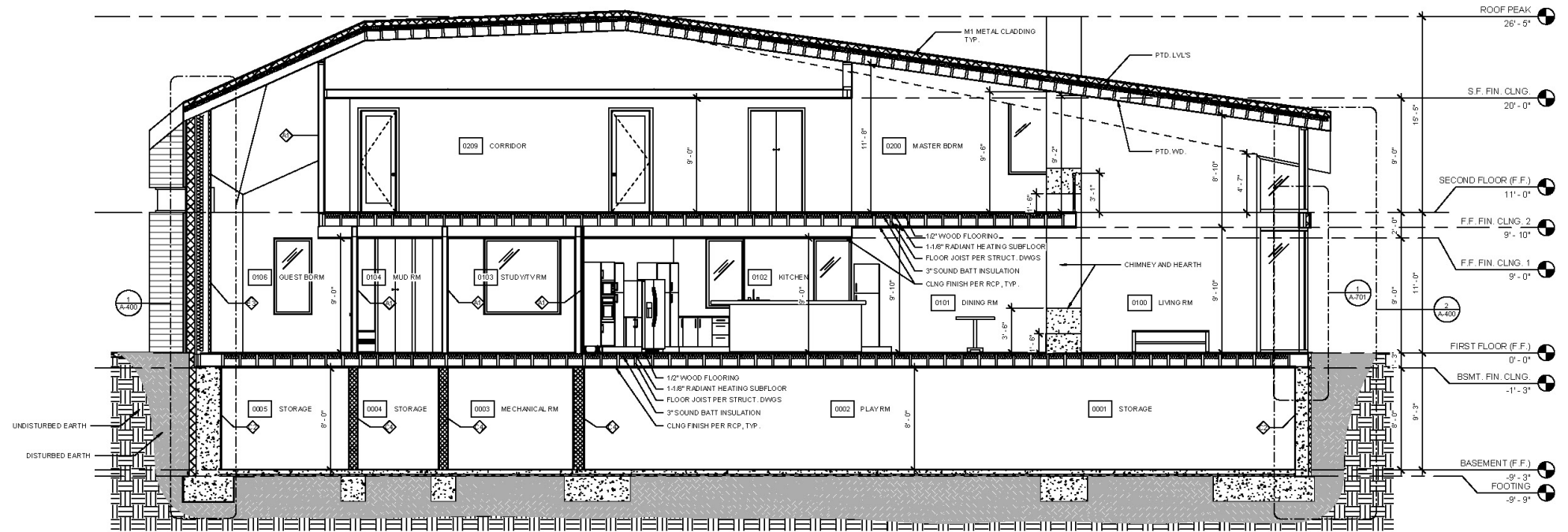


2 PATIO

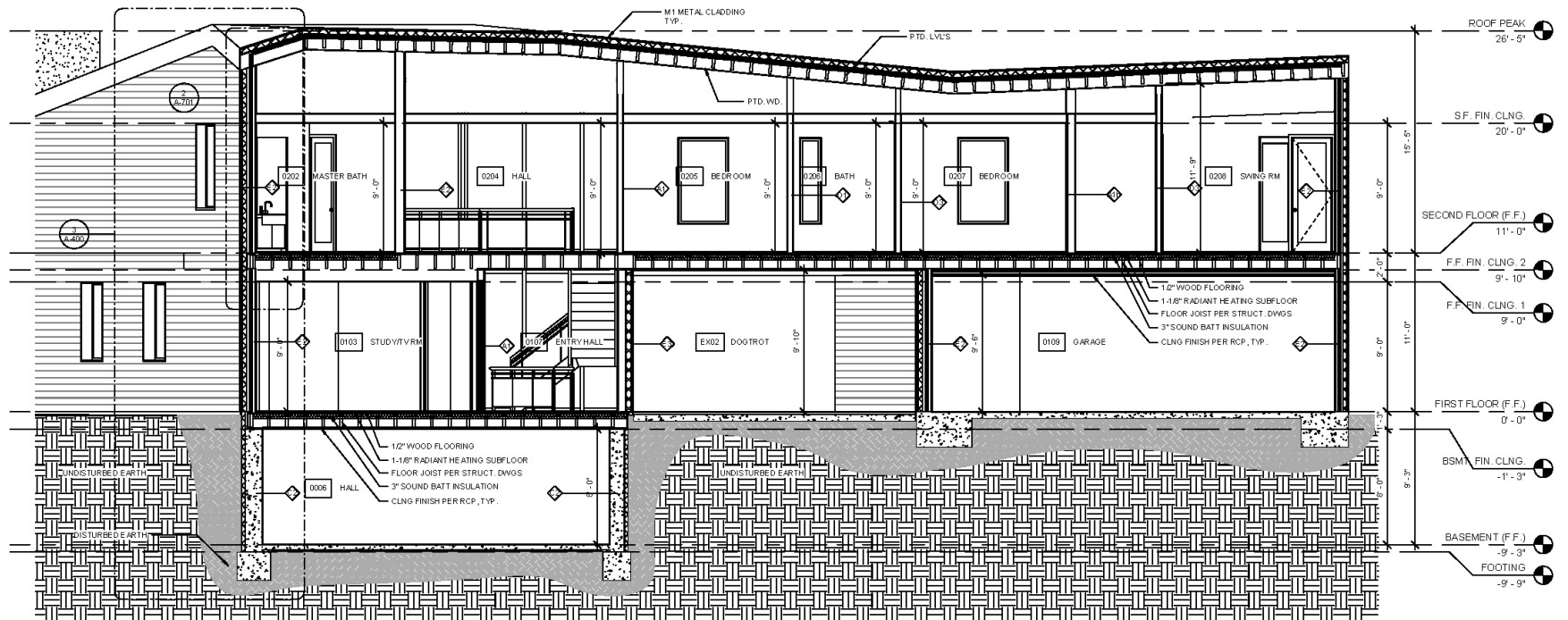


3 ENTRYWAY





1 BUILDING SECTION-1  
1/4" = 1'-0"



2 BUILDING SECTION-2  
1/4" = 1'-0"

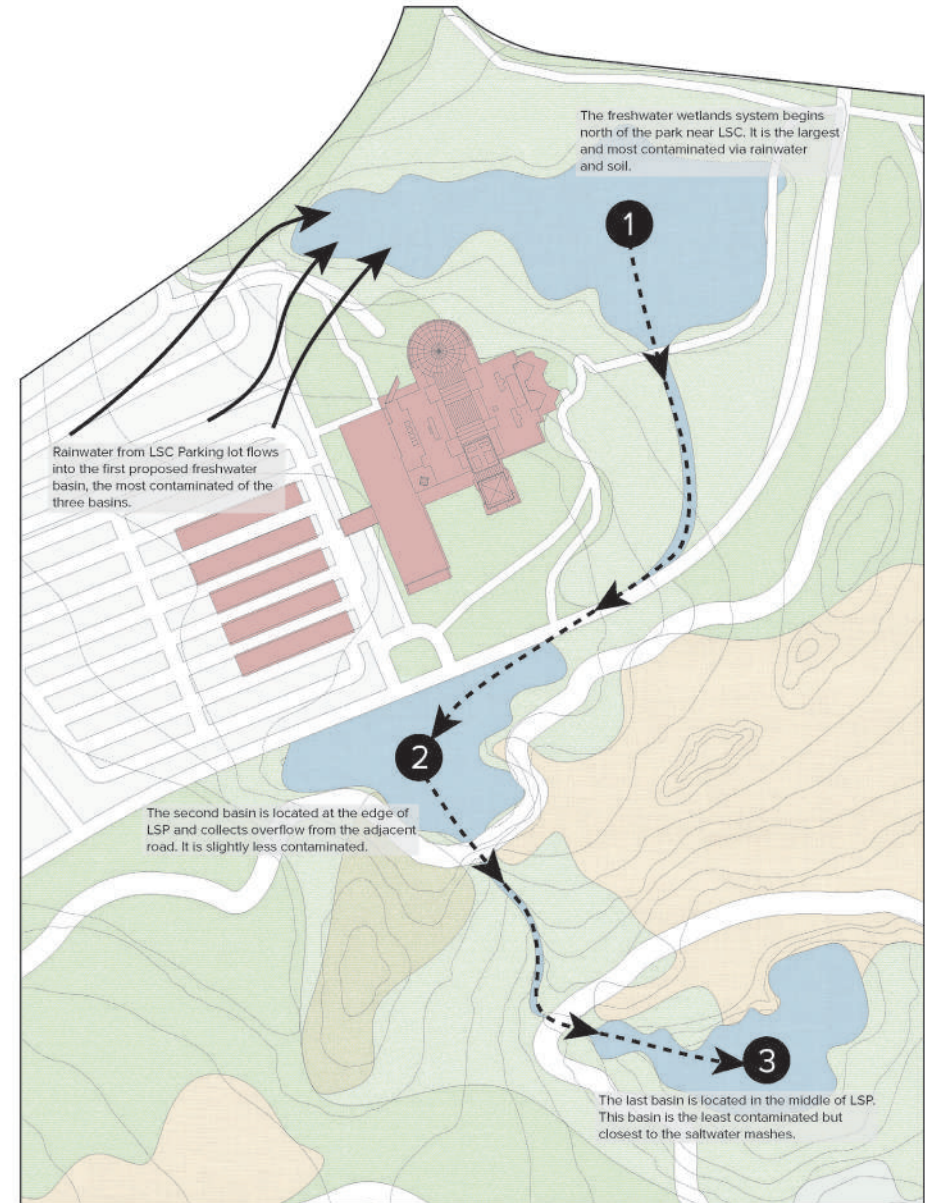


# PURIFY LSP

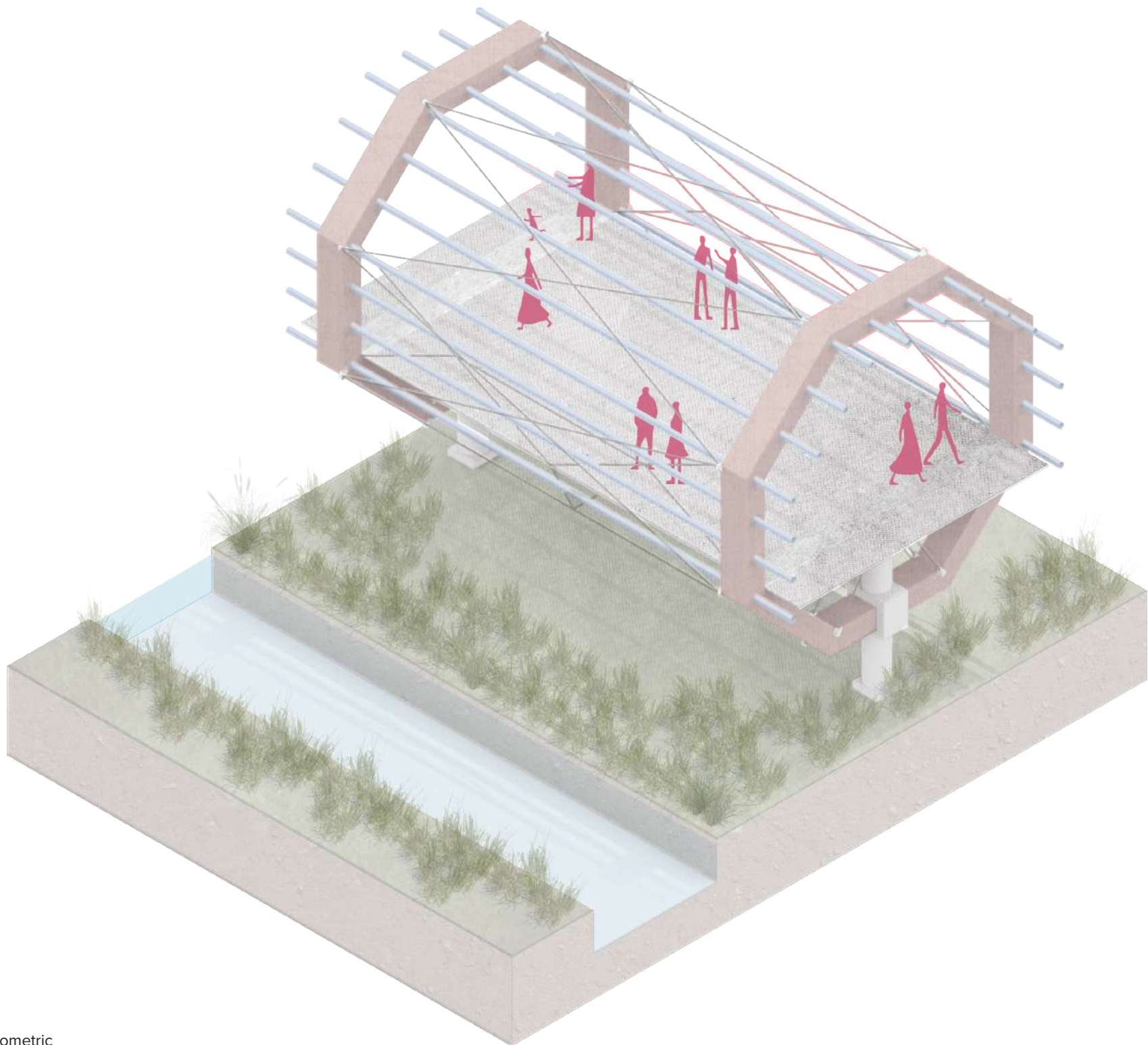
Sustainable Infrastructure | Jersey City, NJ

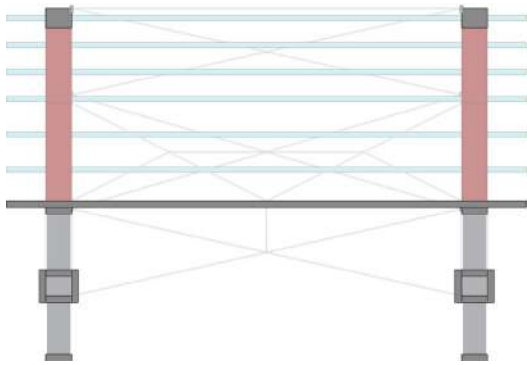
Fall 2019 | Thomas Ogorzalek

The studio focused on the restoration area within Liberty State Park in Jersey City, NJ. Students were tasked to create a new architectural system that would positively impact the vastly diverse ecological zone. This project aimed to connect the Liberty Science Center directly to the restoration zone via a pedestrian walkway bridge that services both people and the surrounding water system. The walkway in its entirety replicates the natural water purifying system by using varying path modules. This system would progressively assist the ecology where the community is able to traverse alongside the system to learn and appreciate it.

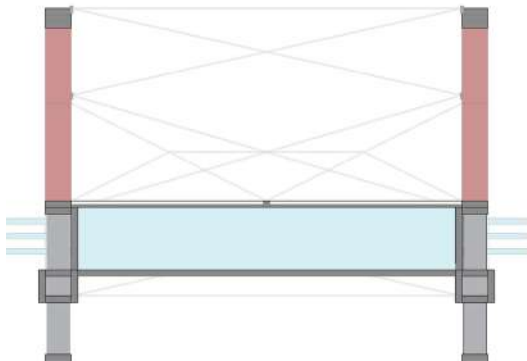


Site Flow Diagram

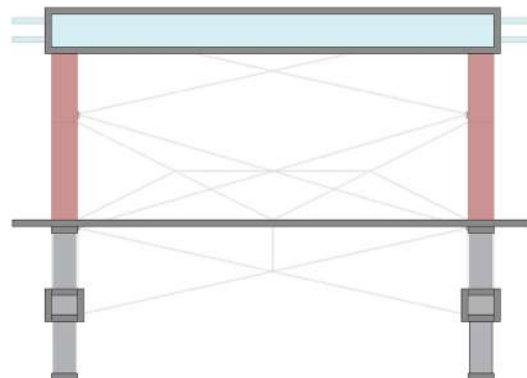




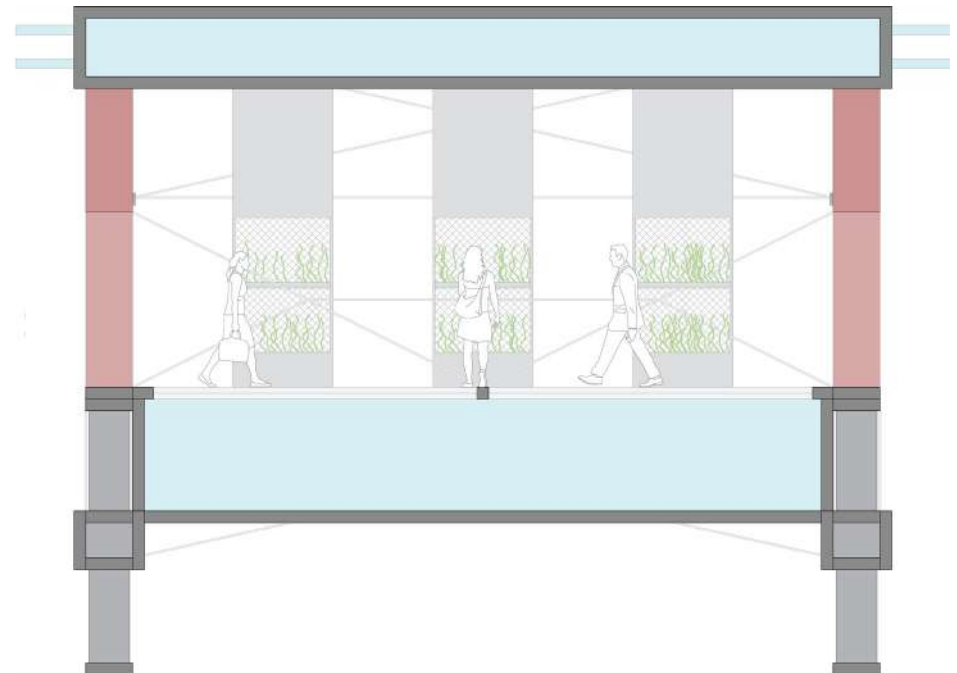
Module 1



Module 2

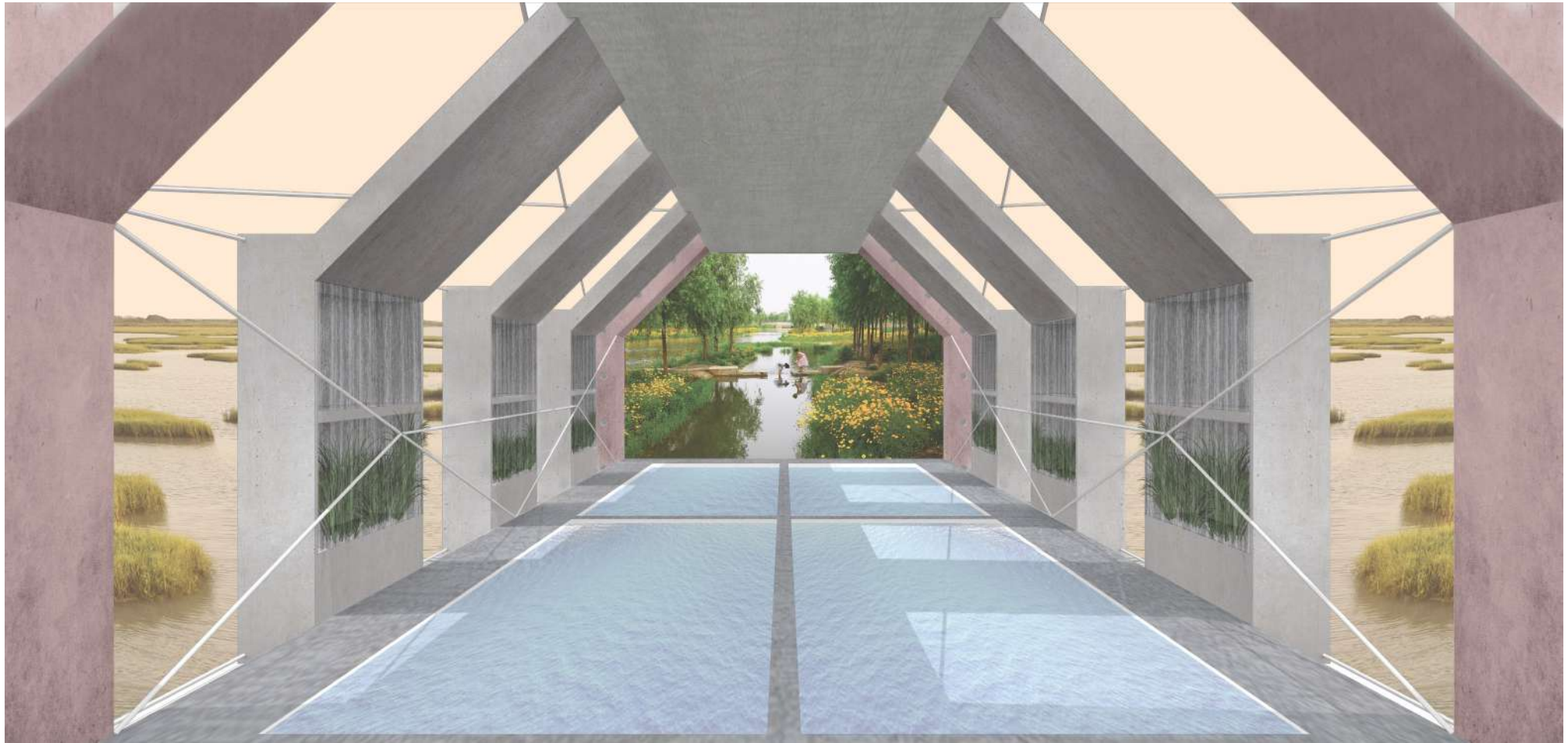


Module 3



Module 4





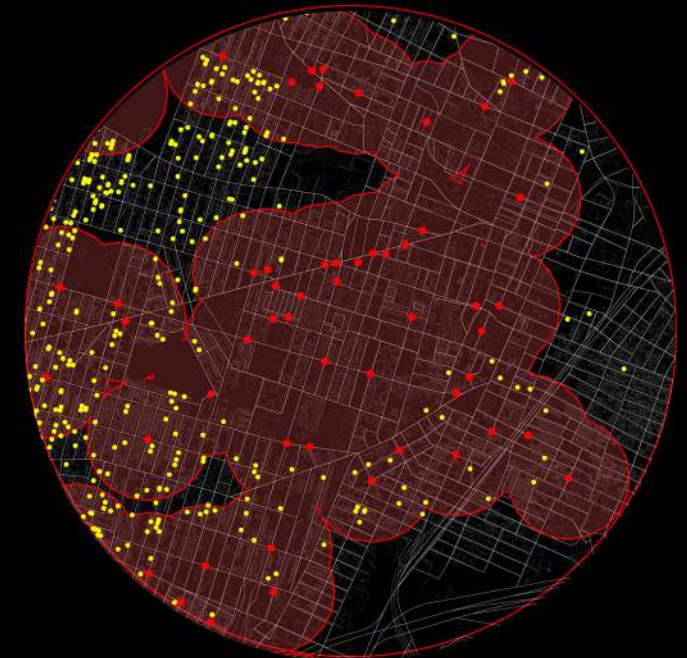
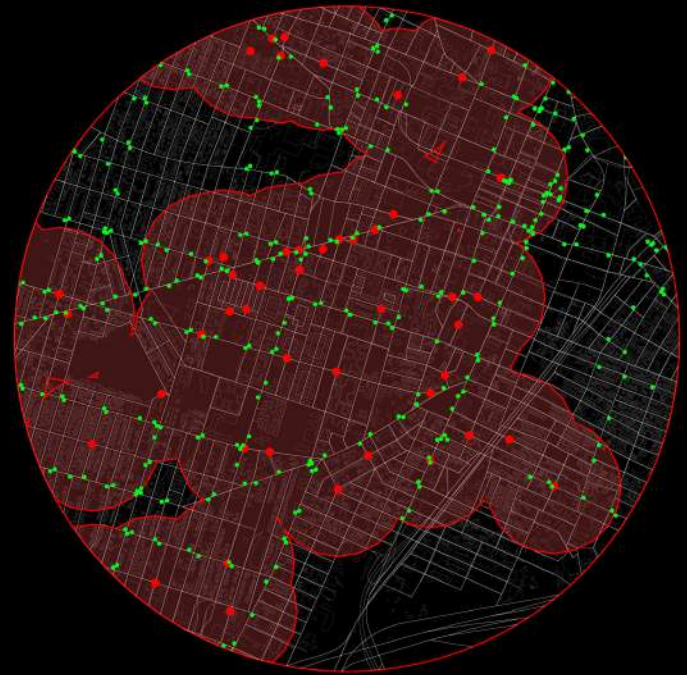
Module 4 Collage

# AFFORDABLE HOUSING ACCESS

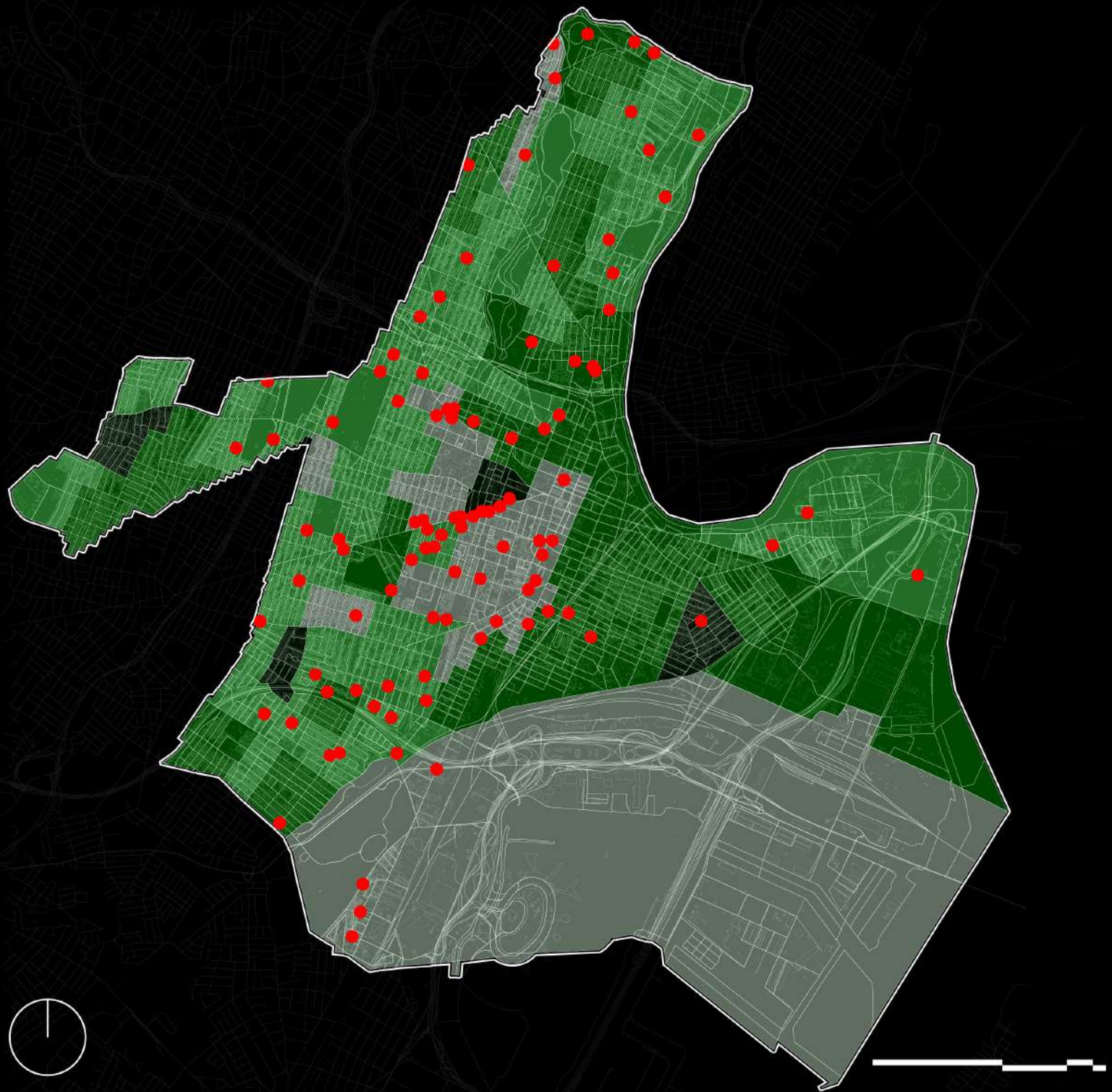
Spatial Research Assignment | Newark, NJ

Fall 2020 | Dare Brawley

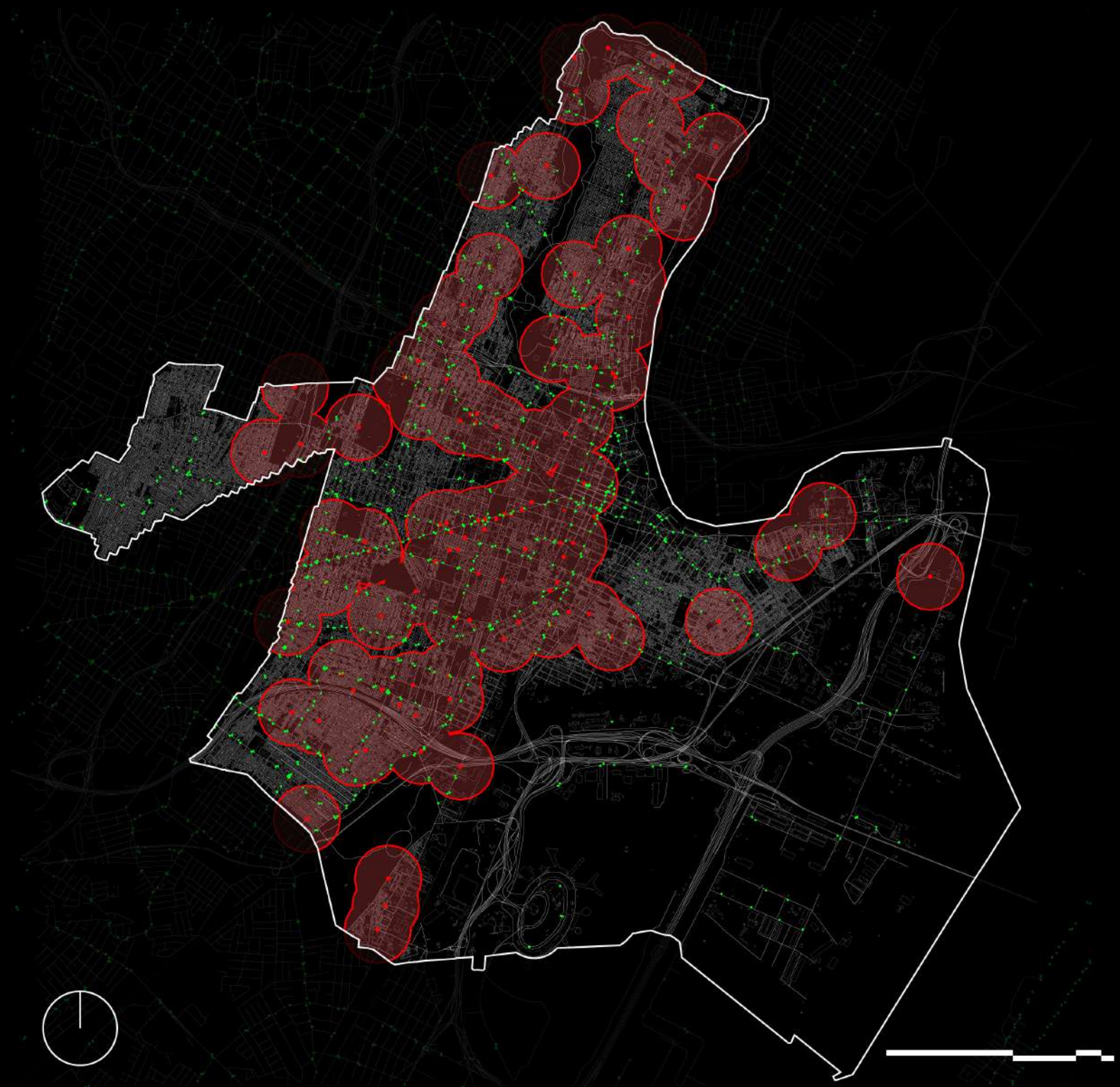
The class taught the basics of geographic information systems and how to use various spatial methods for analyzing and designing urban areas. A final research project was created by each student focusing on a specific narrative with specific datasets in the city of Newark, NJ. This report located densities of affordable housing complexes in the city where they are then overlaid with varying accessibility information such as transit stops, grocery stores, and potential opportunity areas.



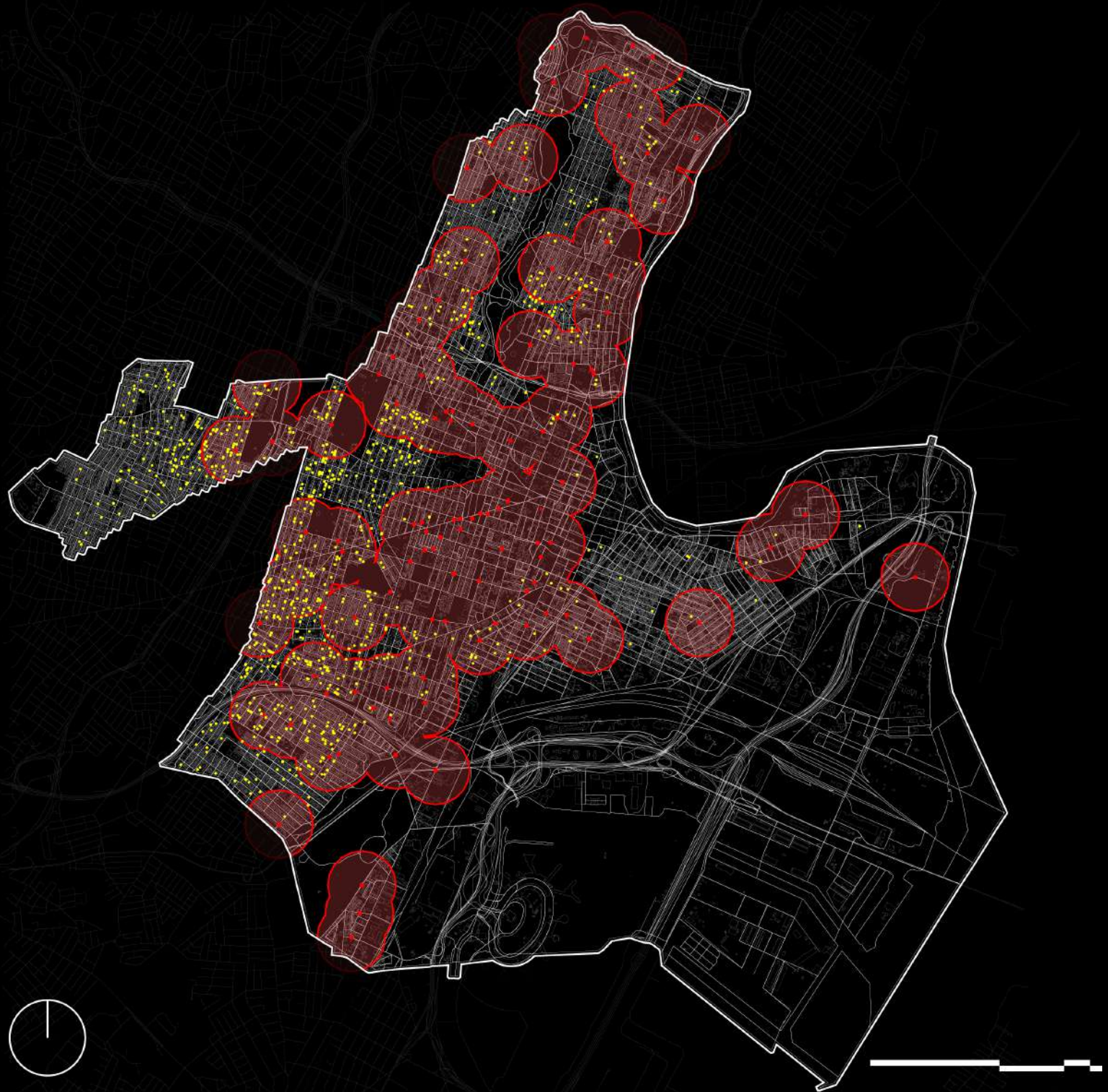












# ACCESO AL AGUA

Riverside Redevelopment | Lima, Peru

Fall 2020 | Georgeen Theodore  
Partnered with Margaux Thys,  
Steve Vivar, Youliana Elkomos

The interdisciplinary infrastructure planning studio focused on revitalizing the downtown district of Lima by researching public space practices, urban themes, and consulting with the city directly. Partnering with the City of Lima, Urban95, and the Bloomberg Foundation, three sites were distributed to the studio for a new proposal which would fit into the revitalized framework. The studio group's (Margaux Thys, Steve Vivar, Youliana Elkomos) designated site was alongside the Rimac river, a large central stakeholder running through the city. Building off the existing Alameda Chabuca Granda a barren riverside edge is transformed into a large urban play scape.



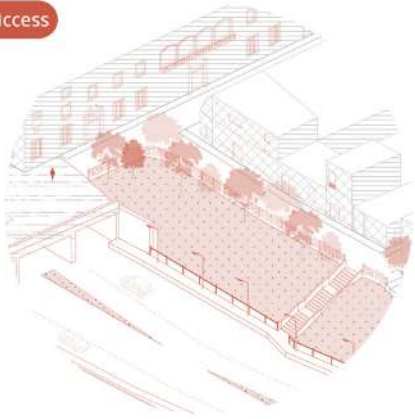
Existing Conditions Perspective



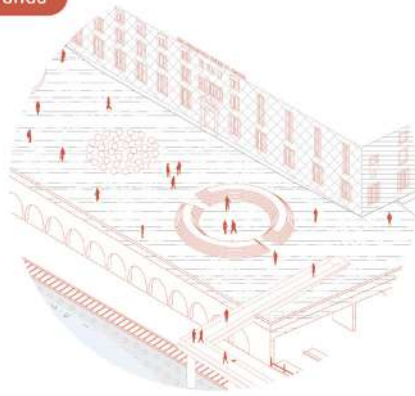
Existing Conditions Collage



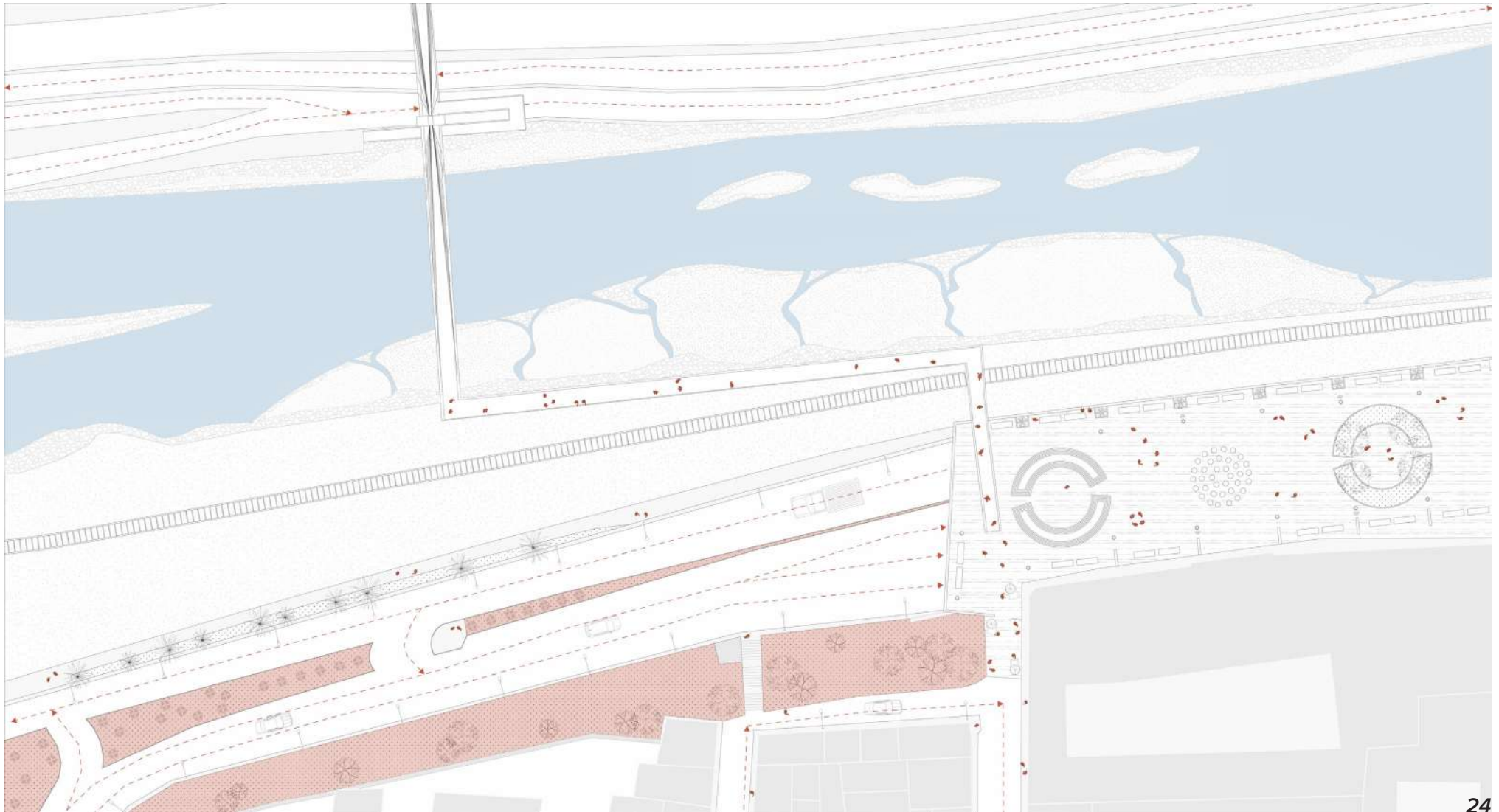
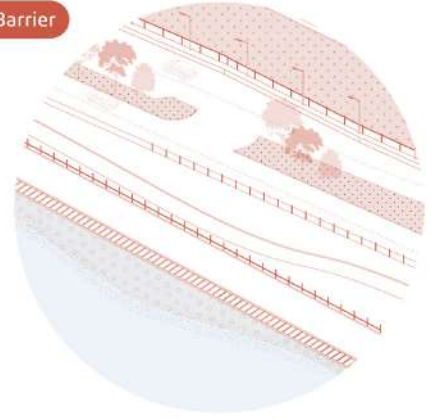
Sloped Hill Access



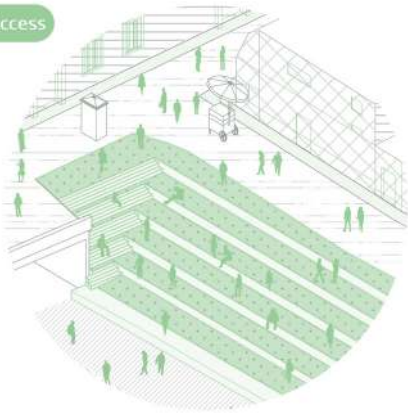
Chabuca Granda



Riverfront Barrier



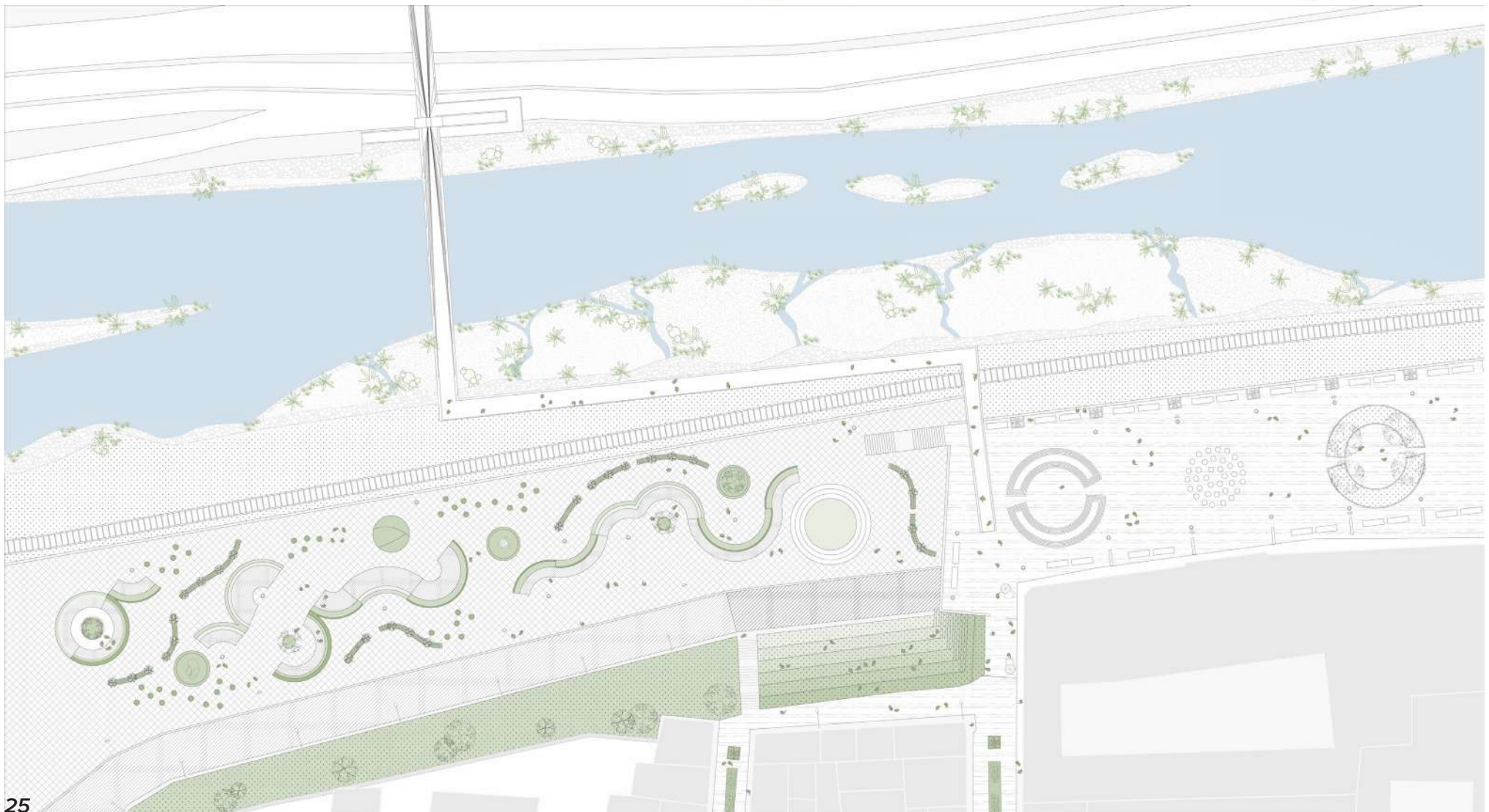
Sloped Hill Access



Pedestrian Street



New Open Space







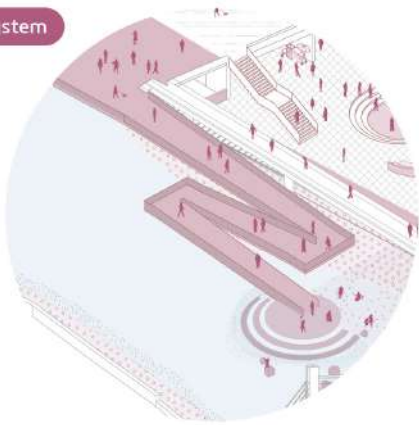
Phase 1 Perspective



Phase 1 Collage



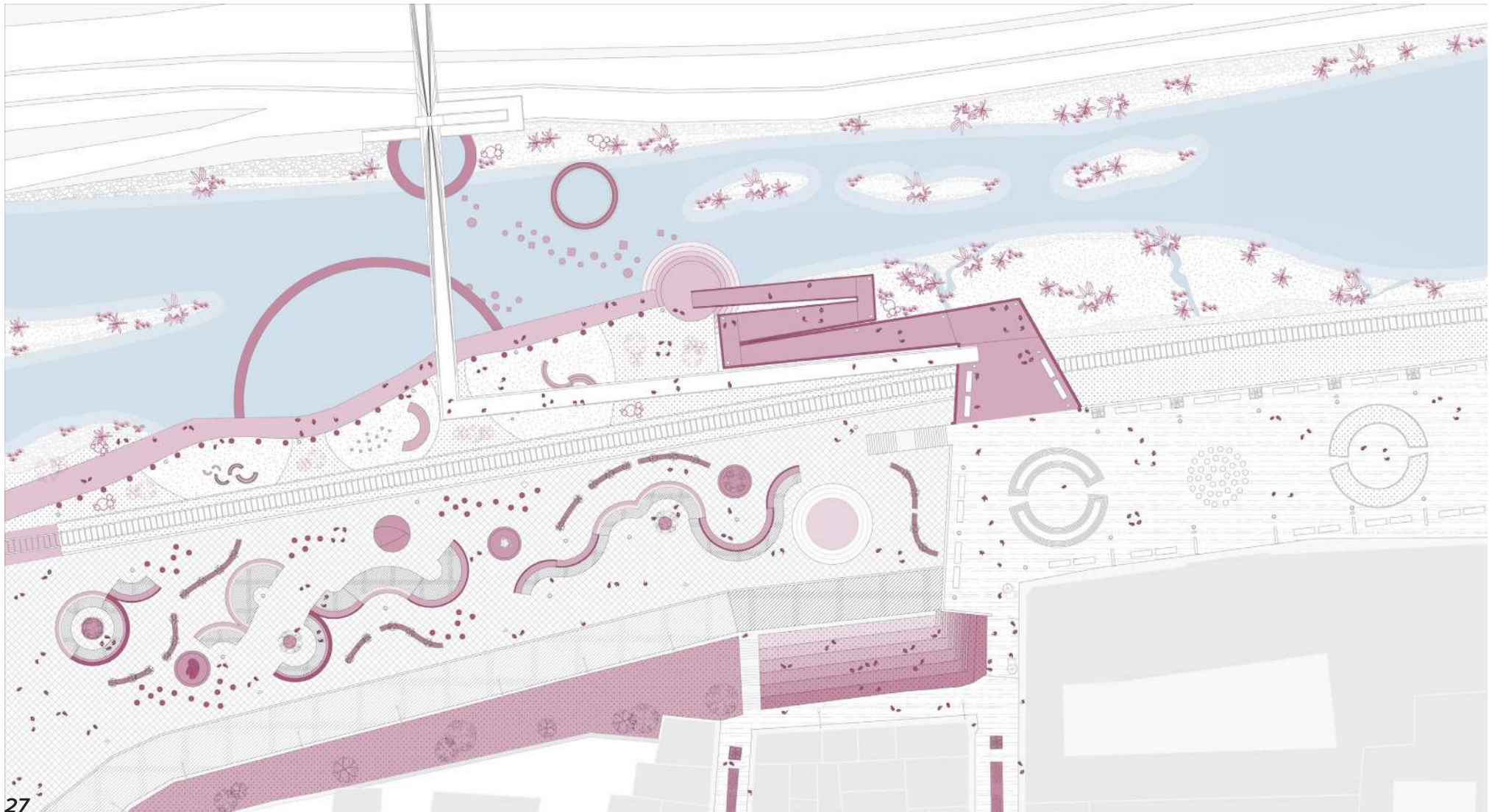
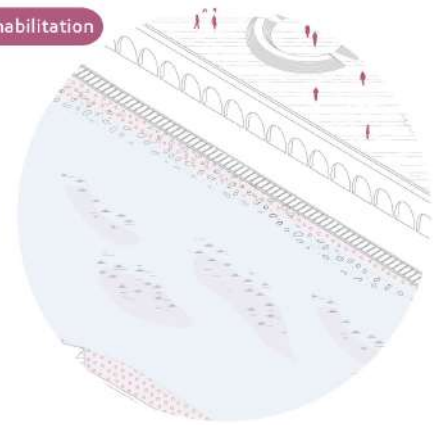
Ramping System



Play-scape Area



Ecology Rehabilitation







Phase 2 Perspective



Phase 2 Collage