

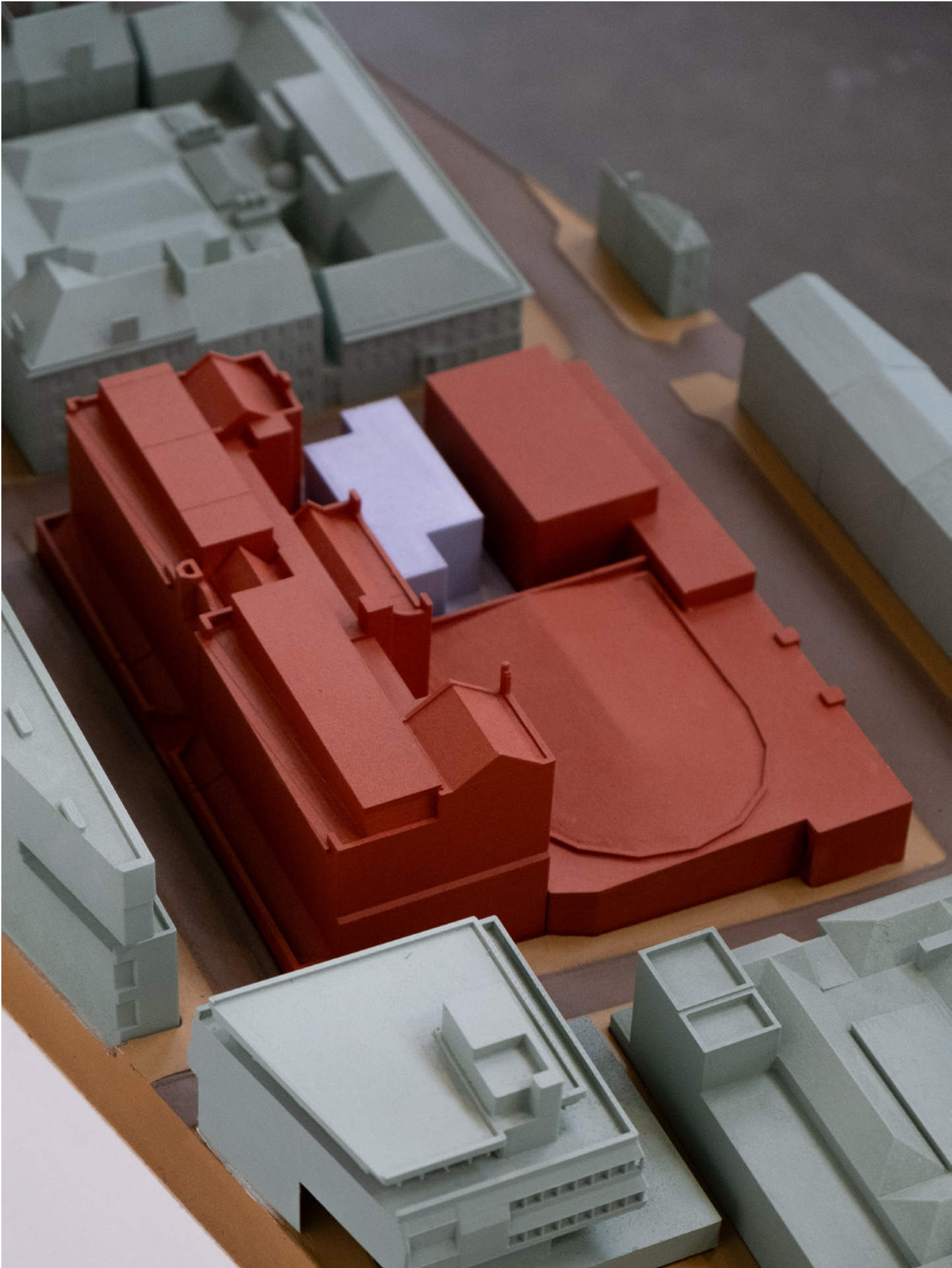


# Pepper Nghi Nguyen

Selected Works

TABLE OF CONTENT

05-10	MISUSE
11-14	KASE
15-20	URBAN HOUSING
21-26	METAFORMA
27-32	ALCHEMY FASHION SHOW
33-36	SKETCHES



MISUSE

- Glasgow, Scotland
- Knapps Loch, Scotland



Scan code for Video!

Undergraduate Thesis

Spring 2024  
SCI-Arc

Thesis Advisor: Russell Thomsen

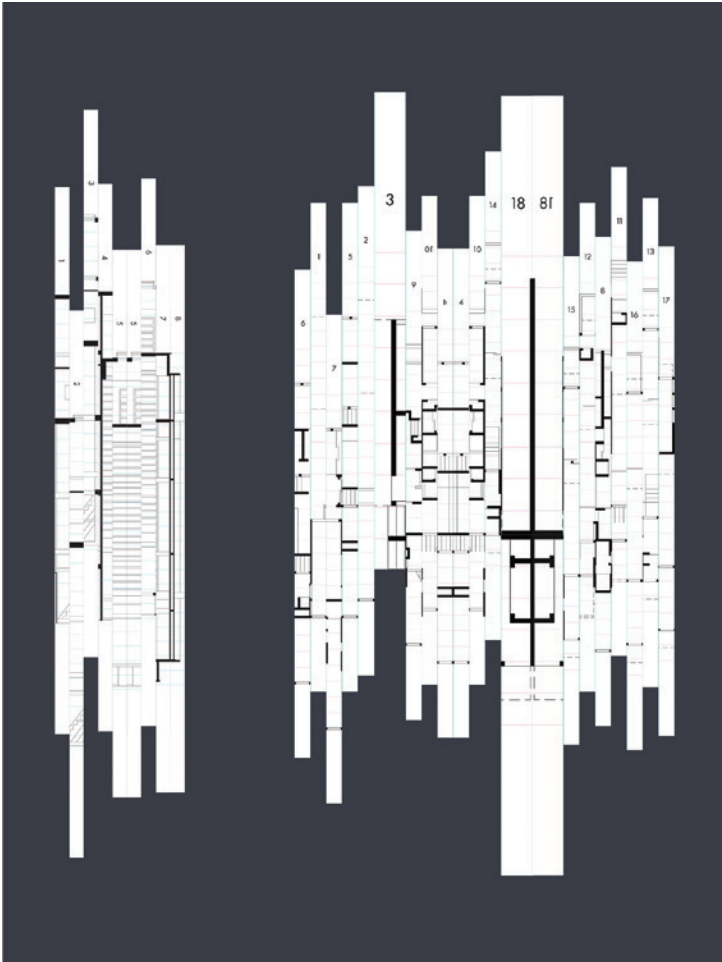
Programs Used: Rhino, Illustrator

In the realm of architecture, we often adhere to the principle of “form follows function”, a mantra that underscores the importance of design responding to its intended purpose. However, what happens when that purpose evolves or when we challenge the conventional standards that define our spaces?

The concept I purpose, Adaptive Misuse, stems from questioning these very principles. It’s about exploring the unexpected and unconventional ways of experiencing a space.

The thesis project developed from the competition of designing Twin Houses for an artist couple. First location is in the center of Glasgow city, behind the School of Art. The second location is to the West of the city site, Knapps Loch.

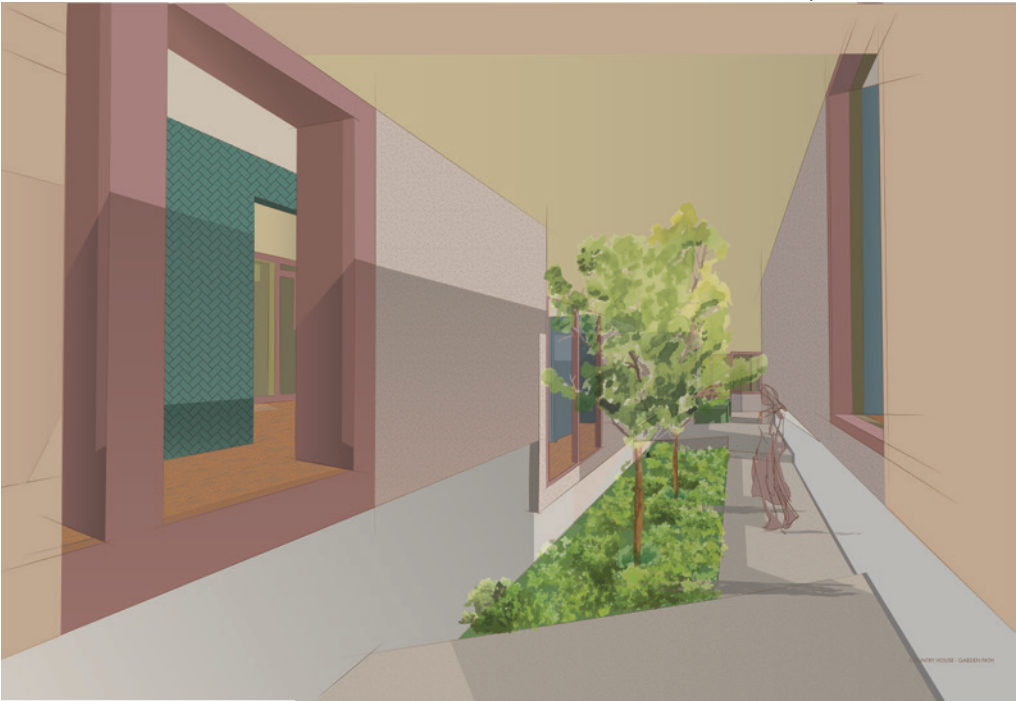




Misconstructed drawings from Neutra VDL plans and sections

Inspired by the techniques that Ben Nicholson applied in his drawing “Appliance House”, and Jiri Kolar with “Chaotic Collage”, where they took a drawing/painting and created segments to shear and rearrange them for a fascinating effect. I applied this technique to the very most architectural fundamental elements - canonical drawings - Plan and Section of the subject house - Neutra VDL, I get the quality of Fragments and Figures in the drawings.

Through the analysis of plans and sections, my research seeks to reveal the hidden potential within these spaces. By intentionally misarranging and misconstructing elements of existing layouts, I aim to provoke new ideas and spark conversation about the possibilities of Misuse as a creative tool for spatial formation.

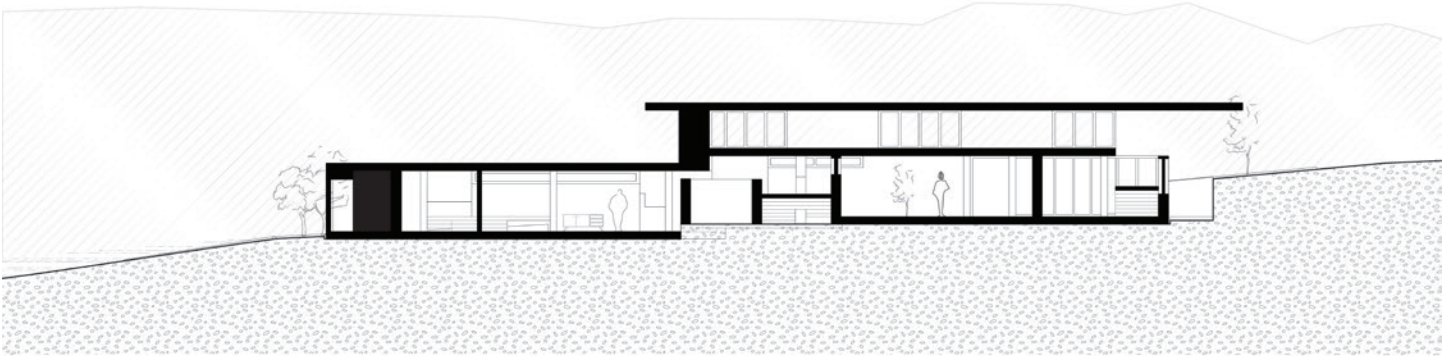


Garden Path - Country House

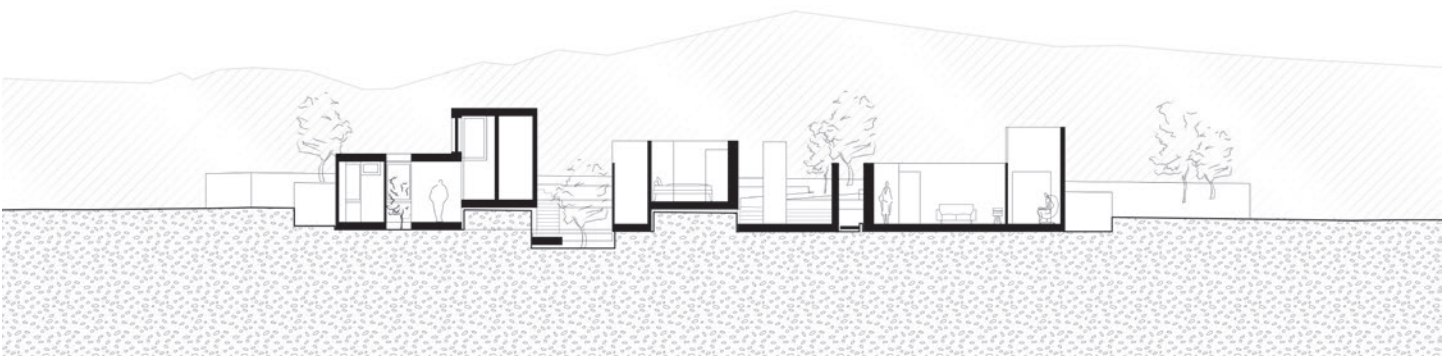


Country House - Physical Model

Laying in a serene locale beside Knapps Loch, where openness abounds, the Country House is meticulously crafted with a planned approach aimed at extending territory, which acquired from the Neutra VDL plan drawings. This house invites us to explore new coherences between architecture and landscape. Can we seamlessly integrate our homes into the surrounding environment, creating harmonious connections that enhance our overall experience?



Country House - Sections



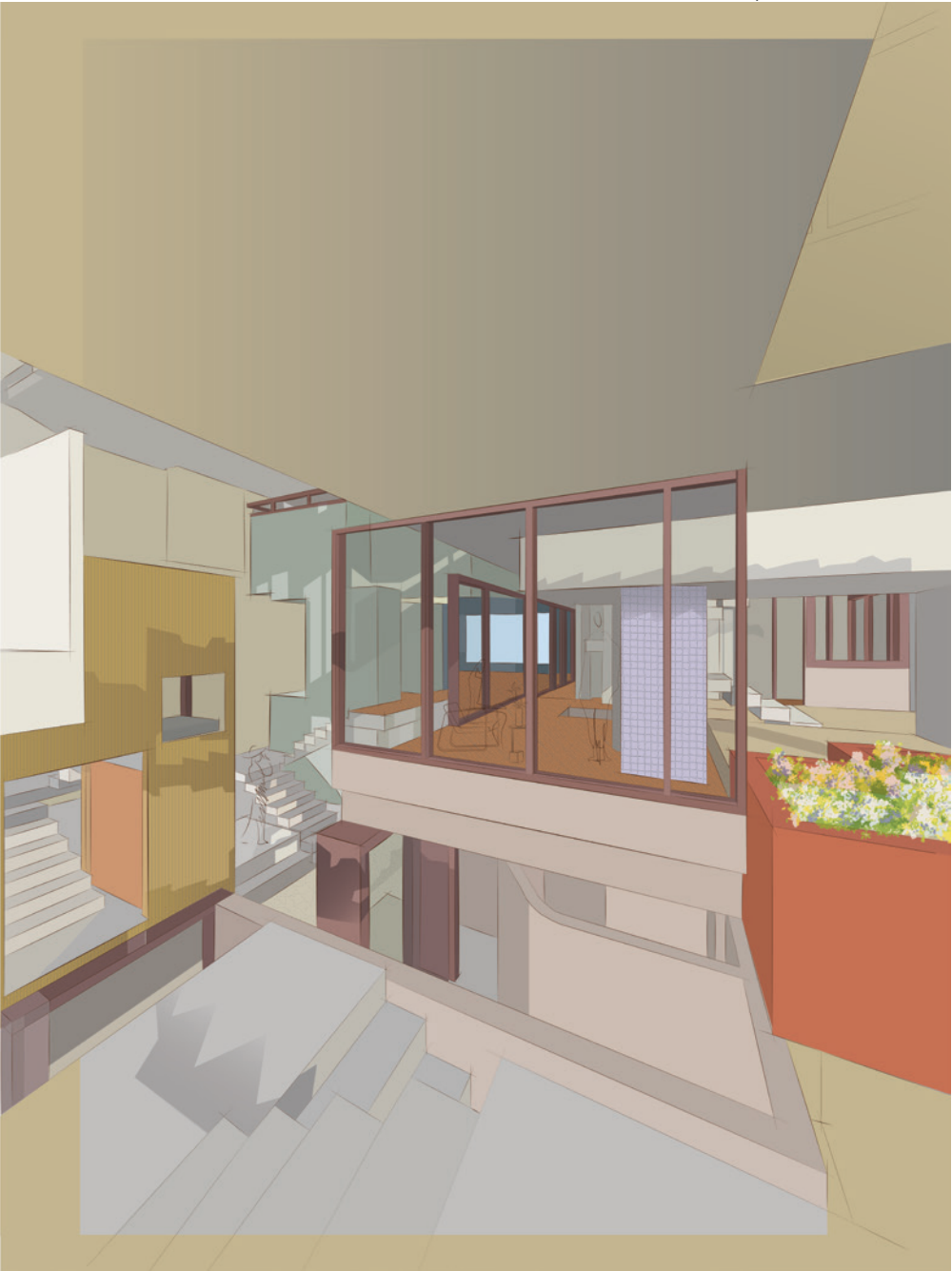




City House - Plans



City House - Physical Model



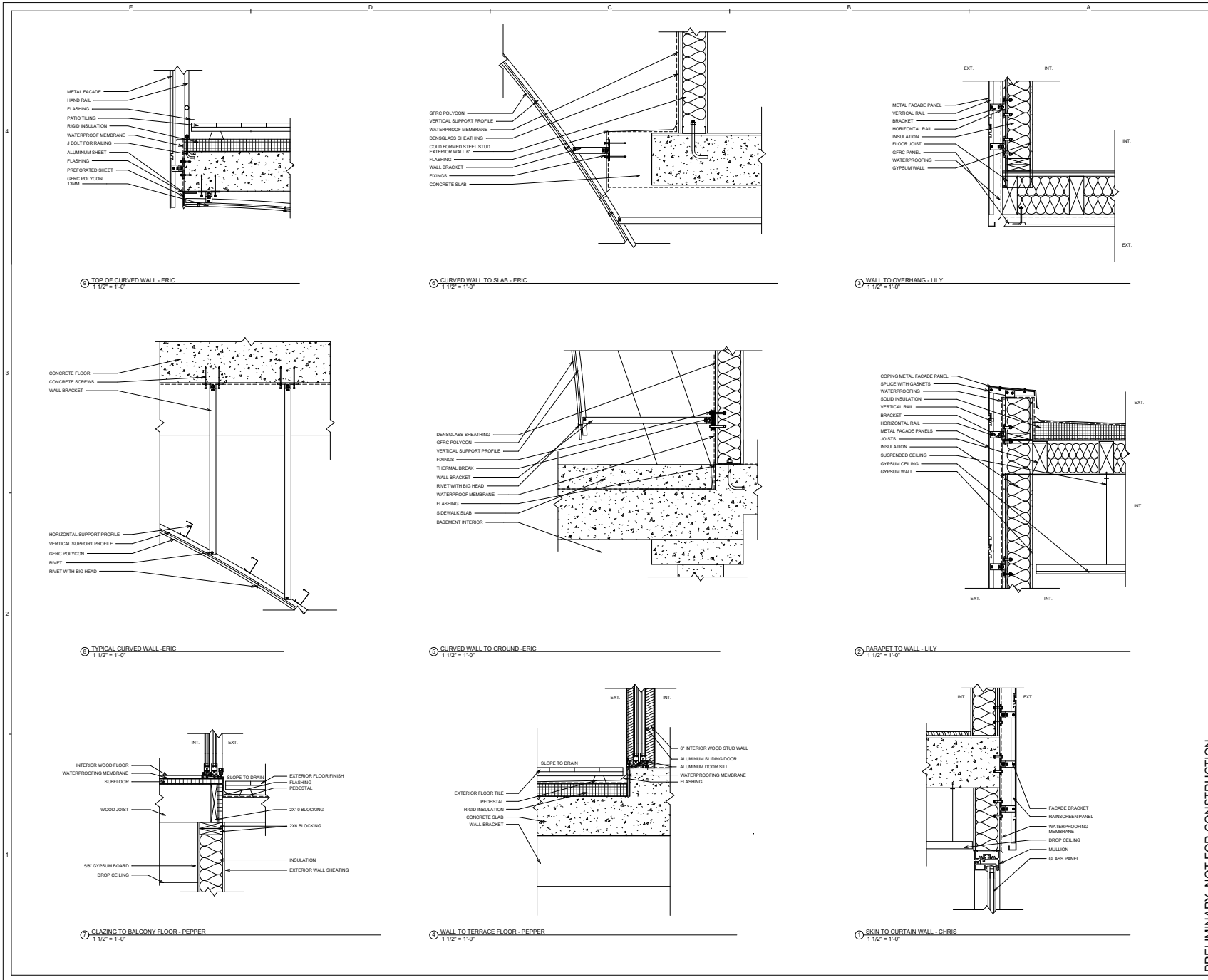
Interface - City House

Conversely, the City House is nestled amidst the on going restoration of the Glasgow School of Art, which suffered a significant fire in 2018. Embraced by the urban landscape and its inherent constraints, the house is designed with a sectional approach, based on the misconstrued drawing derived from the Neutra VDL section drawings. The house challenges us to rethink the conventional boundaries of our dwellings. Can we repurpose overlooked corners, redefine circulation path, or blur the lines between indoor and outdoor areas?

Focusing on digital methods of project delivery and construction documents that incorporates advanced digital technologies to optimize the link between design and construction. The project utilizes BIM as one of the tools for realignment of the traditional relationships between project stakeholders. Using a mixed-use program building on an urban lot located in Los Angeles to design and develop the architecture by creating a 3d digital model and a set of 2d construction documents that include details, all within the BIM environment.

AS Construction Documents

Spring 2023  
SCI-Arc  
Instructors: Pavel Getov  
Kerenza Harris  
Team members: Eric Swanson  
Yan Lan Wang  
Christopher Gonzales  
Miho Asada  
Roles: Schematic Design, Plan Drawings,  
Details Drawings, Construction Document  
Programs Used: Revit, Enscape



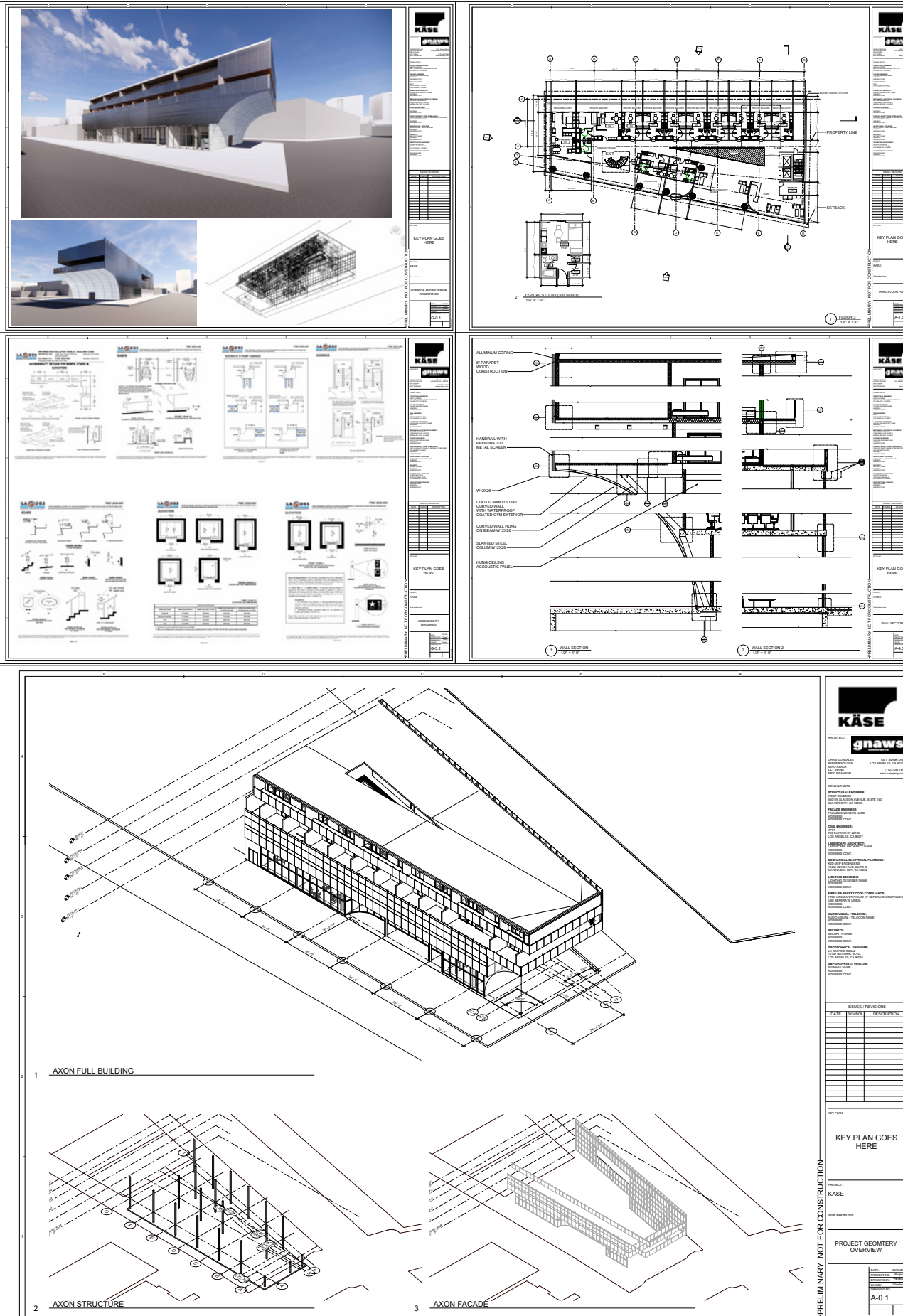
**KASE**  
ARCHITECT: **gnaws**  
CHRIS GONZALES 1801 South Olive LOS ANGELES, CA 90032  
PEPPER NGUYEN  
MIHO ASADA  
LILY WANG  
ERIC SWANSON  
T: 323.455.7880  
www.gnaws.com

CONSULTANTS  
STRUCTURAL ENGINEER: WEST TILGNER 1801 South Olive, Suite 140 CULVER CITY, CA 90230  
FACADE ENGINEER: SPY 700 FLOWER ST AC100 LOS ANGELES, CA 90017  
LANDSCAPE ARCHITECT: LANDSCAPE ARCHITECT NAME ADDRESS ADDRESS CONT  
CIVIL ENGINEER: SPY 700 FLOWER ST AC100 LOS ANGELES, CA 90017  
MECHANICAL/ELECTRICAL/PLUMBING: KID REIF ENGINEERS 1248 BEACH AVE, SUITE B MARINA DEL REY, CA 90292  
LIGHTING DESIGNER: LIGHTING DESIGNER NAME ADDRESS ADDRESS CONT  
FIRE/LIFE SAFETY CODE COMPLIANCE: FIRE/LIFE SAFETY NAME (IF SEPARATE COMPANIES) ADDRESS ADDRESS CONT  
AUDIO VISUAL / TELECOM: AUDIO VISUAL / TELECOM NAME ADDRESS ADDRESS CONT  
SECURITY: SECURITY NAME ADDRESS ADDRESS CONT  
GEOTECHNICAL ENGINEER: LA GEOTECHNICAL 10128 NATIONAL BLVD LOS ANGELES, CA 90024  
ARCHITECTURAL SIGNAGE: SIGNAGE NAME ADDRESS ADDRESS CONT

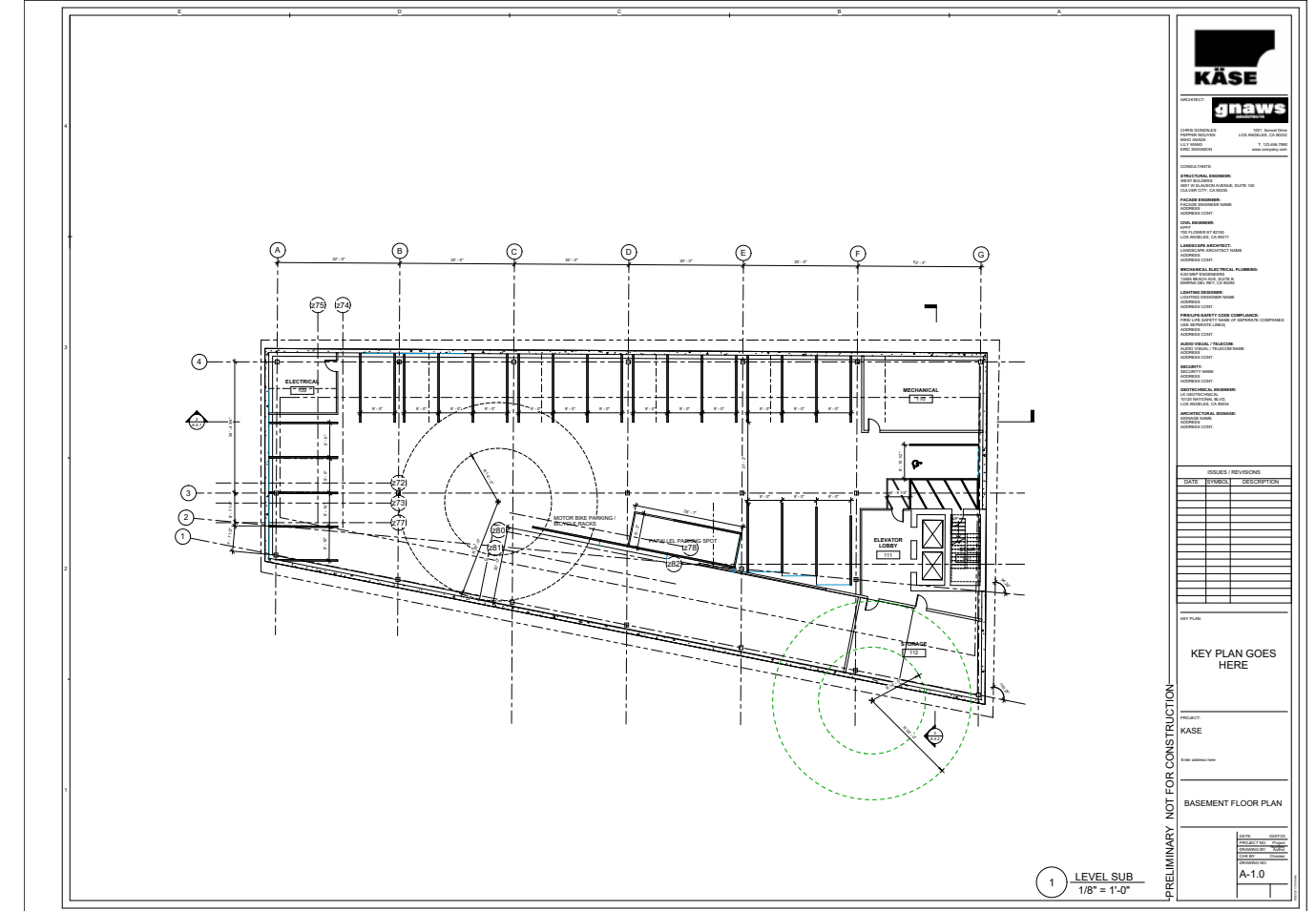
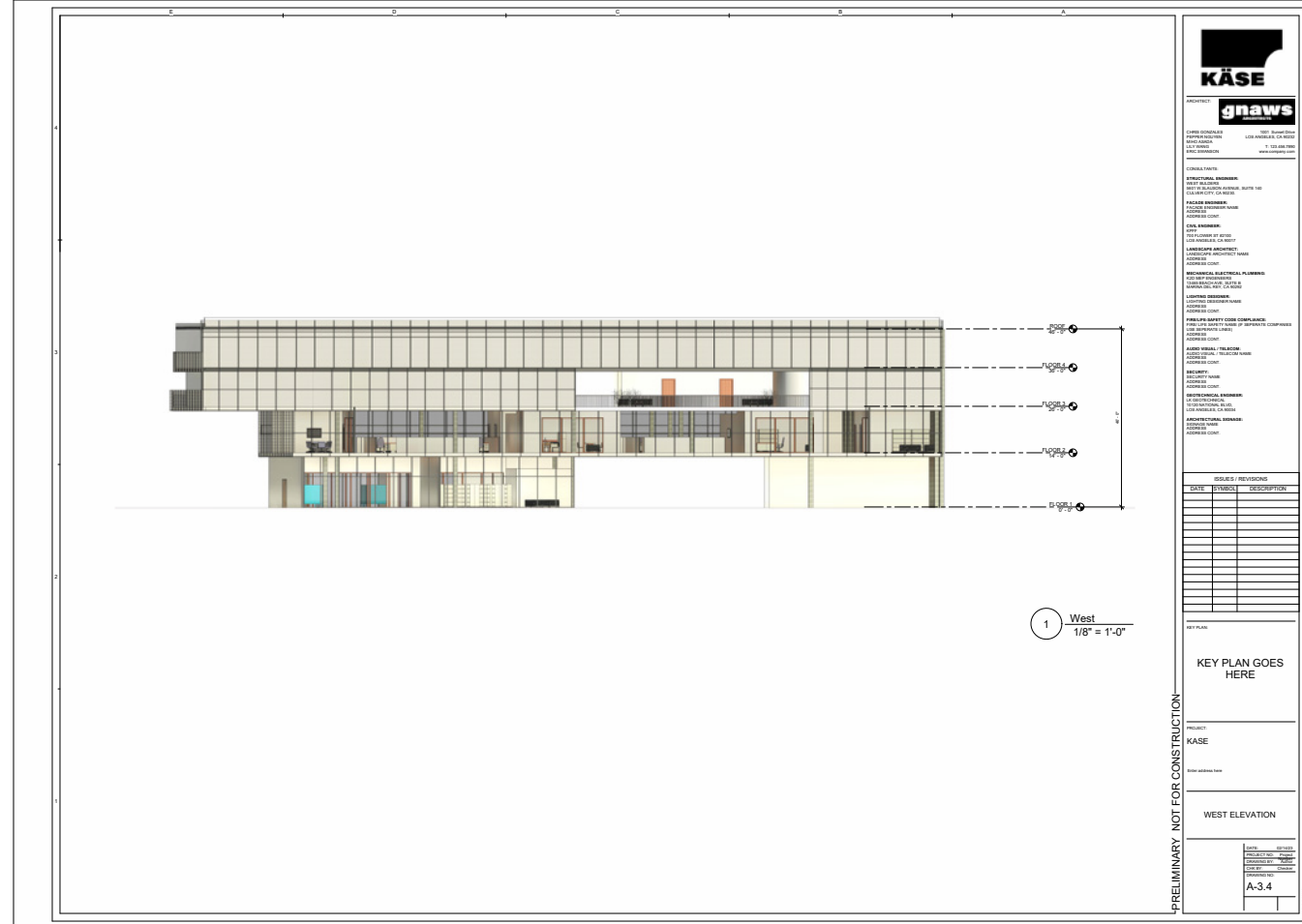
ISSUES / REVISIONS  
DATE SYMBOL DESCRIPTION

KEY PLAN  
KEY PLAN GOES HERE

EXTERIOR DETAILS  
DATE: 05/21/23  
PROJECT NO: KASE  
DRAWING BY: [Signature]  
CHK BY: Checker  
DRAWING NO: A-6.0







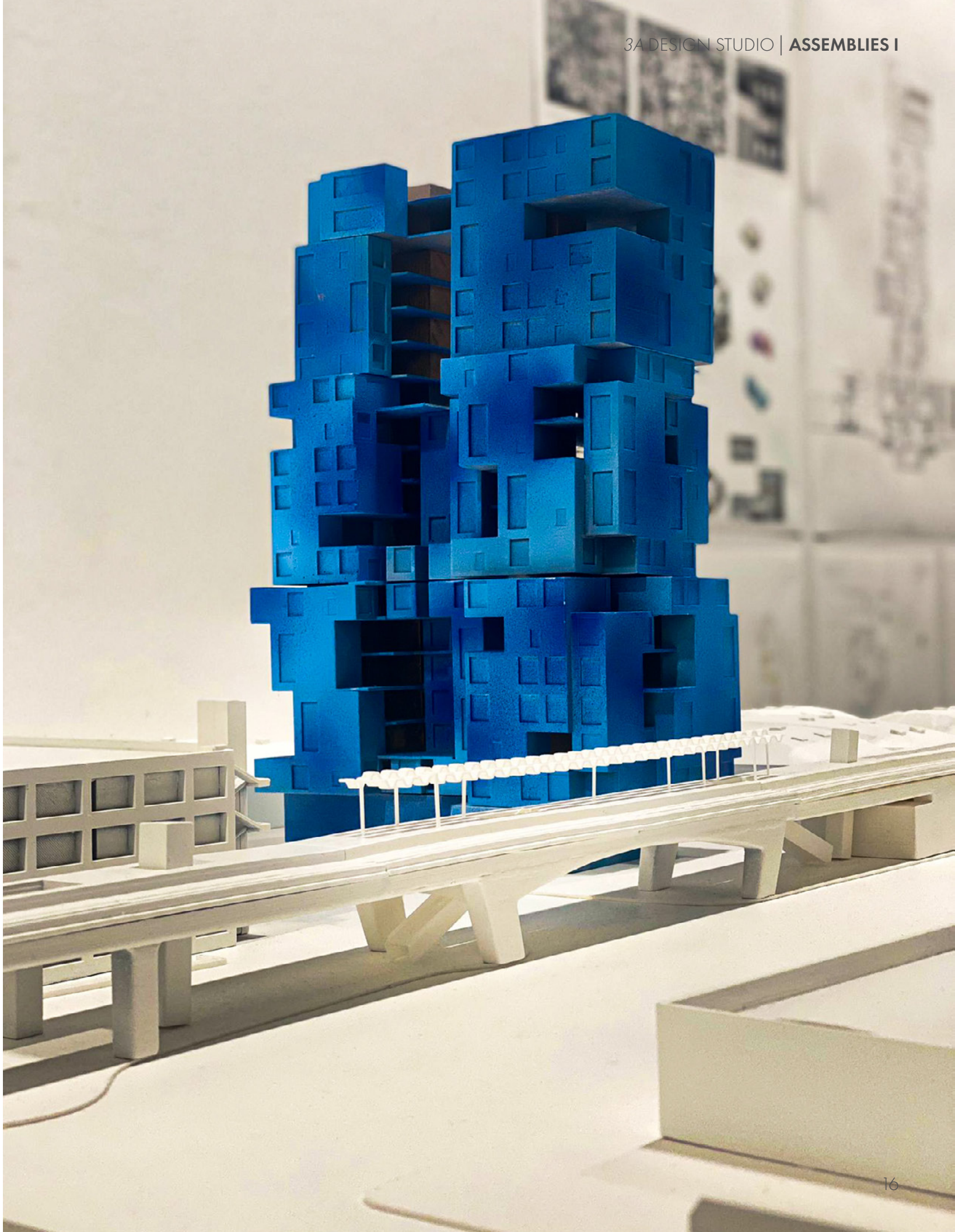


URBAN HOUSING

3401 S La Cienega Blvd, Los Angeles, CA 90016

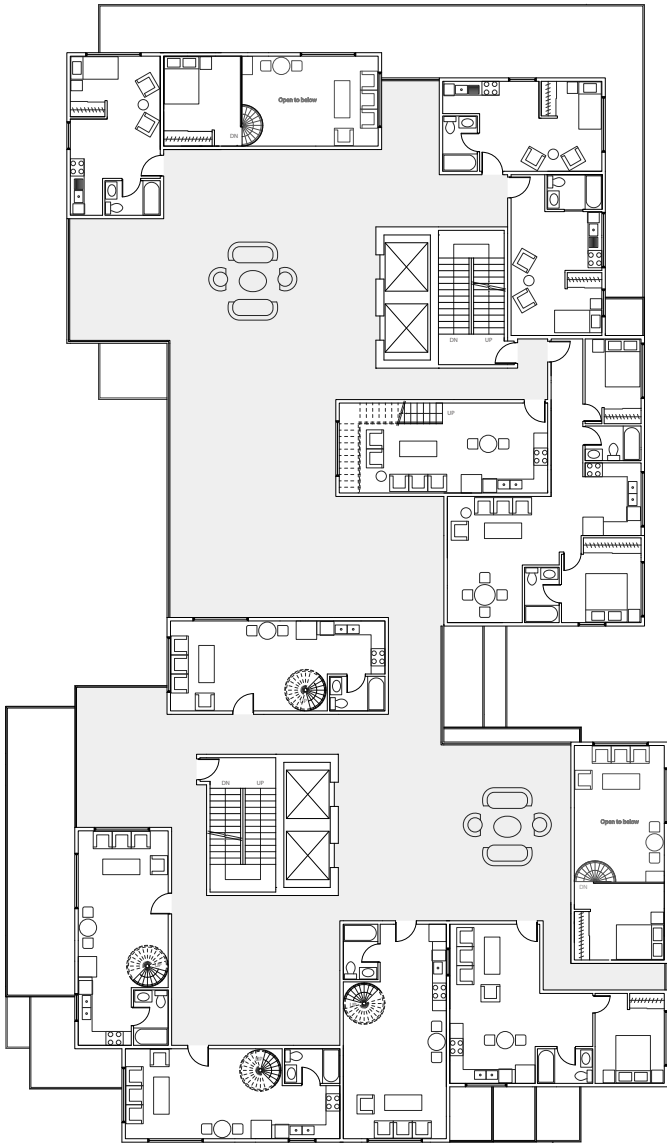
3A Design Studio  
*Fall 2021*  
Instructor: Ming Fung  
Partner: Mariam Alothman  
Program Used: Rhino, V-ray

The project delves into the exploration of framing at various scales, utilizing open spaces and voids to create captivating illusions that challenge our perception. These distinctive “frames” offer glimpses of the surrounding cityscape, tantalizing peeks into the building’s interior, and even enchanting balcony spaces within the residential units. Through this strategic approach, we aim to intrigue and captivate viewers, inviting them to contemplate the multifaceted layers of our architectural design.



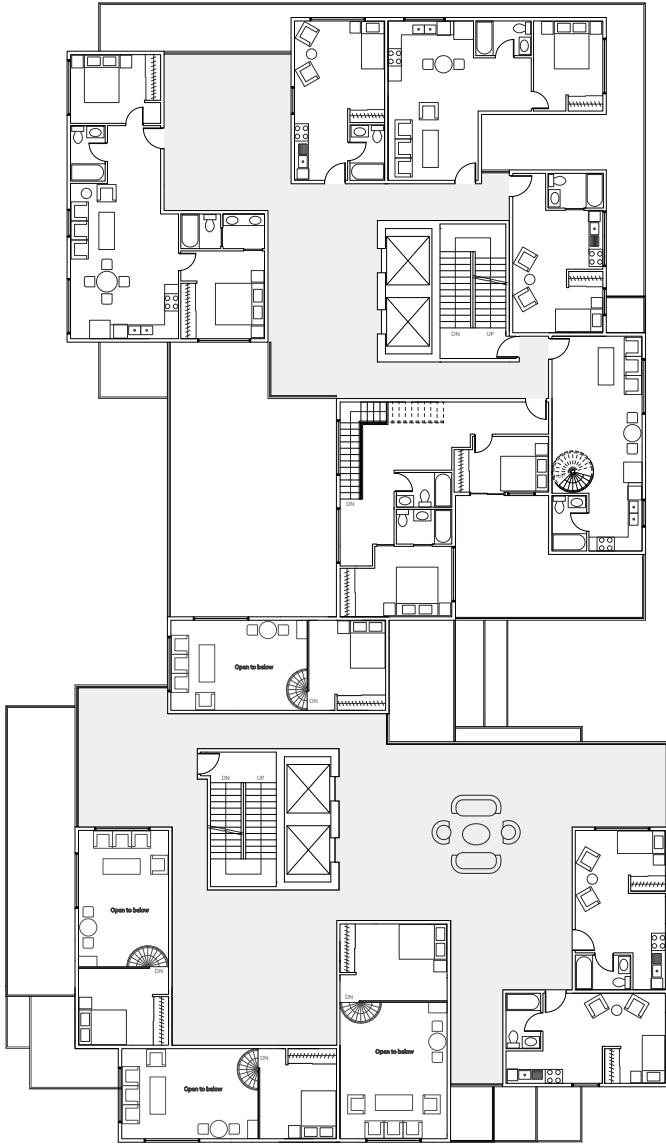


TYPICAL FLOOR PLAN - 9TH FLOOR

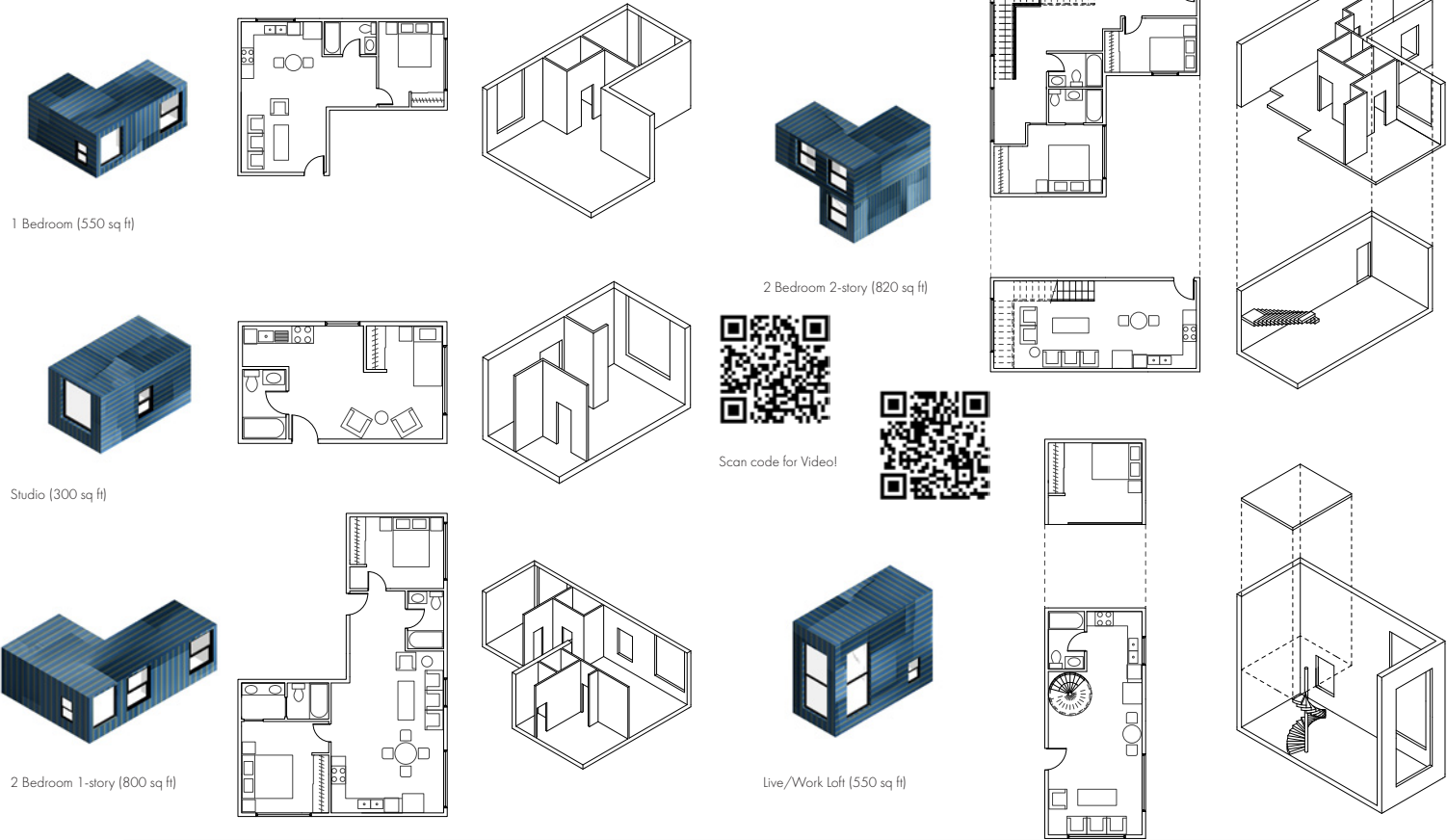
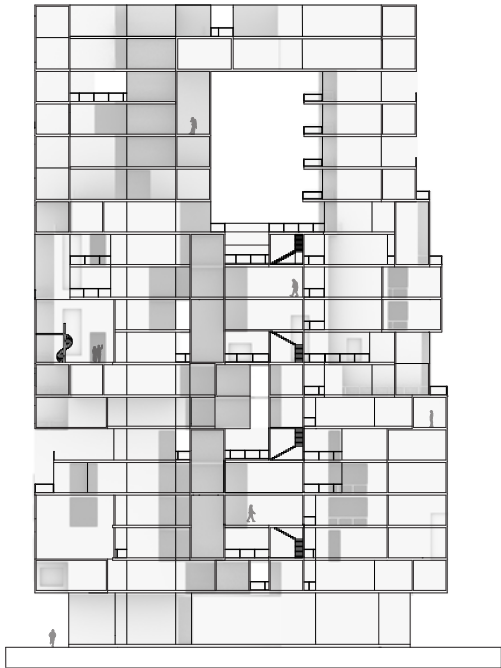
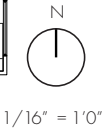


The clusters are designed as interlocking 3D puzzle pieces, forming a cohesive composition around the central core, flowing seamlessly from bottom to top, resembling the fluid motion of interconnected elements. In between the cores, the clusters merge, creating a captivating zipper effect.

The vertical circulation acts as a structural core to support our massing and can also be revealed through the voids while certain floors exhibit moments of connection while others remain independent, resulting in a dynamic and versatile architectural arrangement.



TYPICAL FLOOR PLAN - 10TH FLOOR



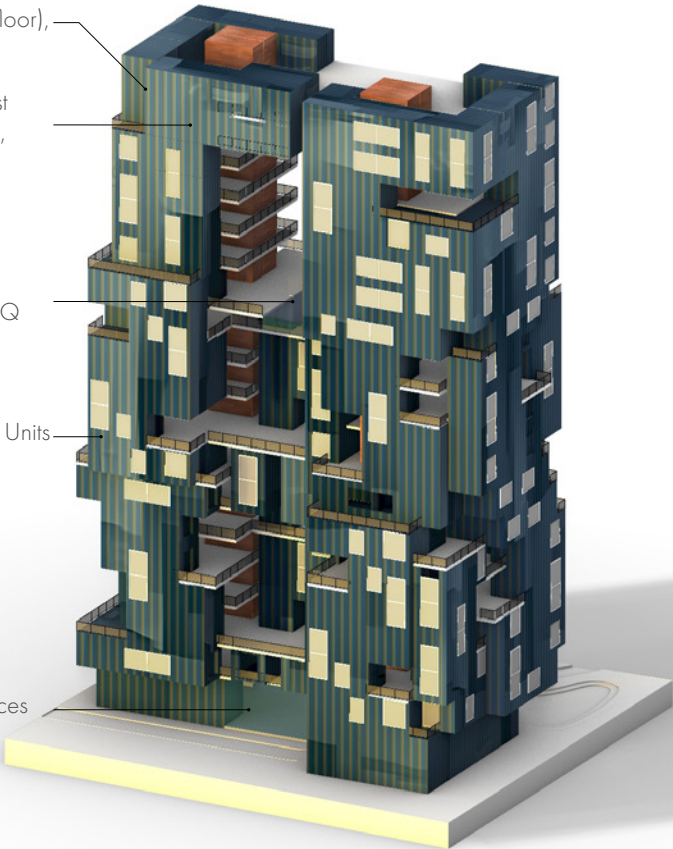
Level 18 (Rooftop): Residential Units, Art Studio, Retails, Cafe (2nd floor), BBQ/Outdoor Fire Place

Level 17: Residential Units, Artist Studio, Retails, Cafe (1st floor), Gym

Level 12: Residential Units, Swimming Pools, Pool bar/BBQ

Level 2 to Level 18: Residential Units

Ground Level: Lobby and Offices



Total Floors: 18  
Building Height: 218 ft



Swimming Pools and Pool Bar (Level 12)



BBQ and Outdoor Fire Place (Roof Top)



West Elevation





## METAFORMA FACTORY

Arezzo, Italy



Scan code for Video!

## Vertical Studio

Fall 2023

SCI-Arc

Instructor: Peter Testa

Partner: Vicente Nabuco

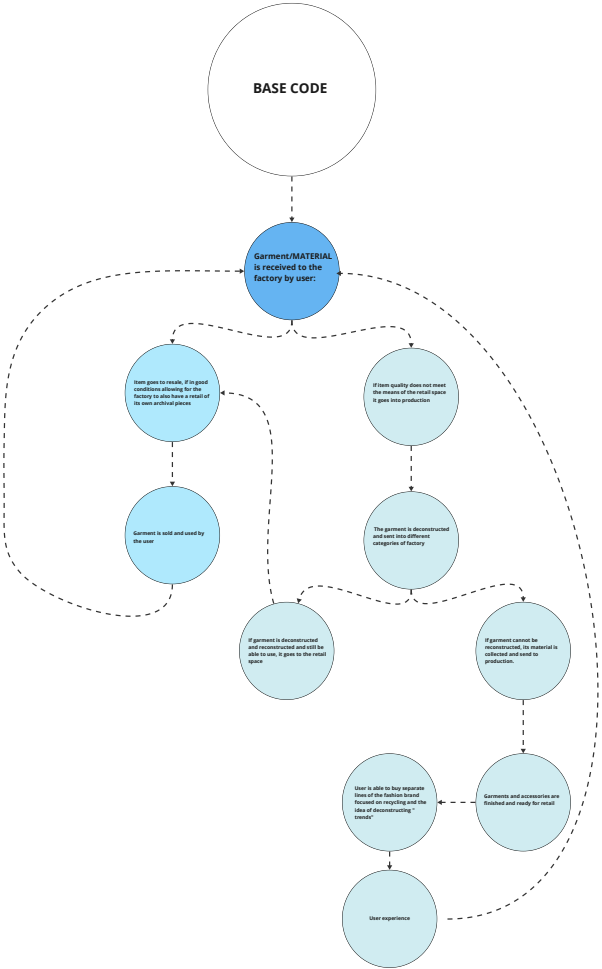
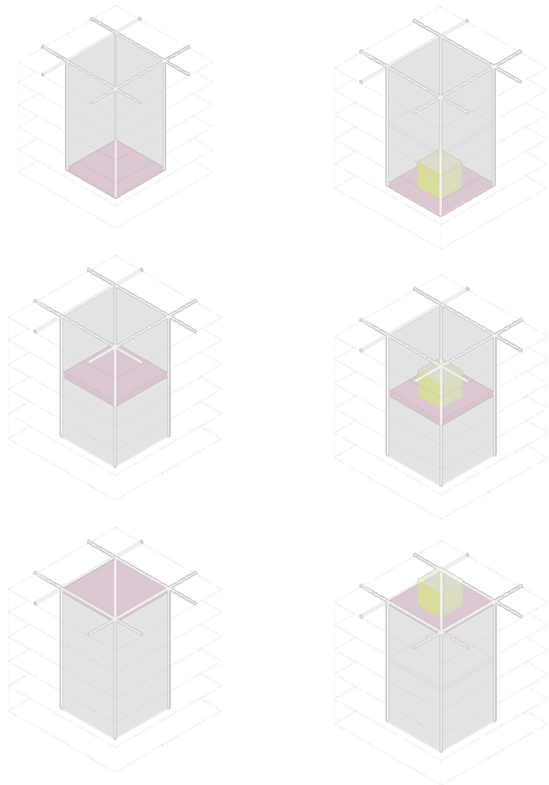
Programs Used: Cinema4D, Rhino

In contrast to the current prevailing fast fashion factories, which adhere to a linear production model, often resulting excessive overproduction and substantial deadstock, we propose a transformative approach. Our vision is to shift the focus to the designers, empowering them with upcycling practices where they are in control over every facet of production inside the factory.

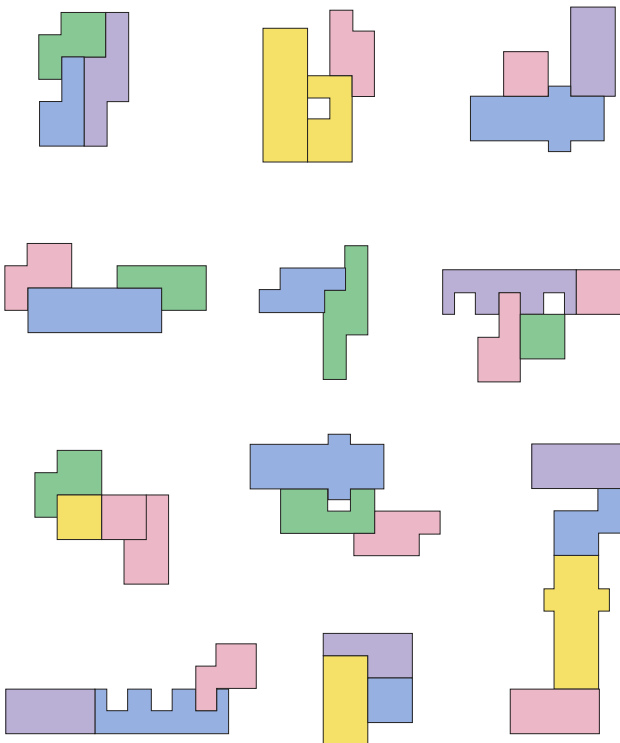
The MetaForma factory creates upcycling techniques through simulations. Highlighting the designers own identity through the artistry of personalization, customization, and mix-programming.

PRODUCTION SYSTEM

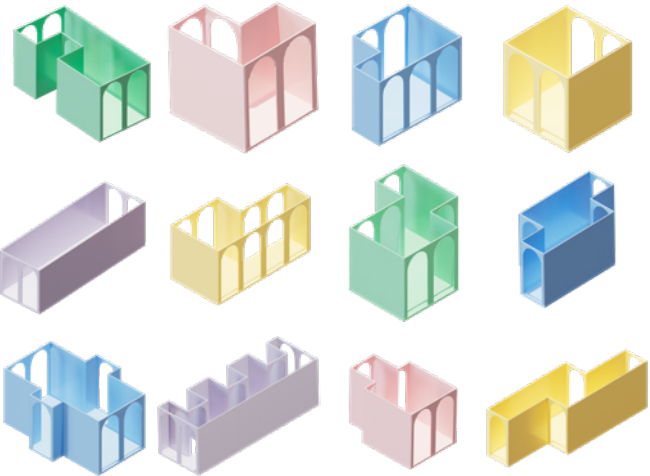
ELEVATION SYSTEM



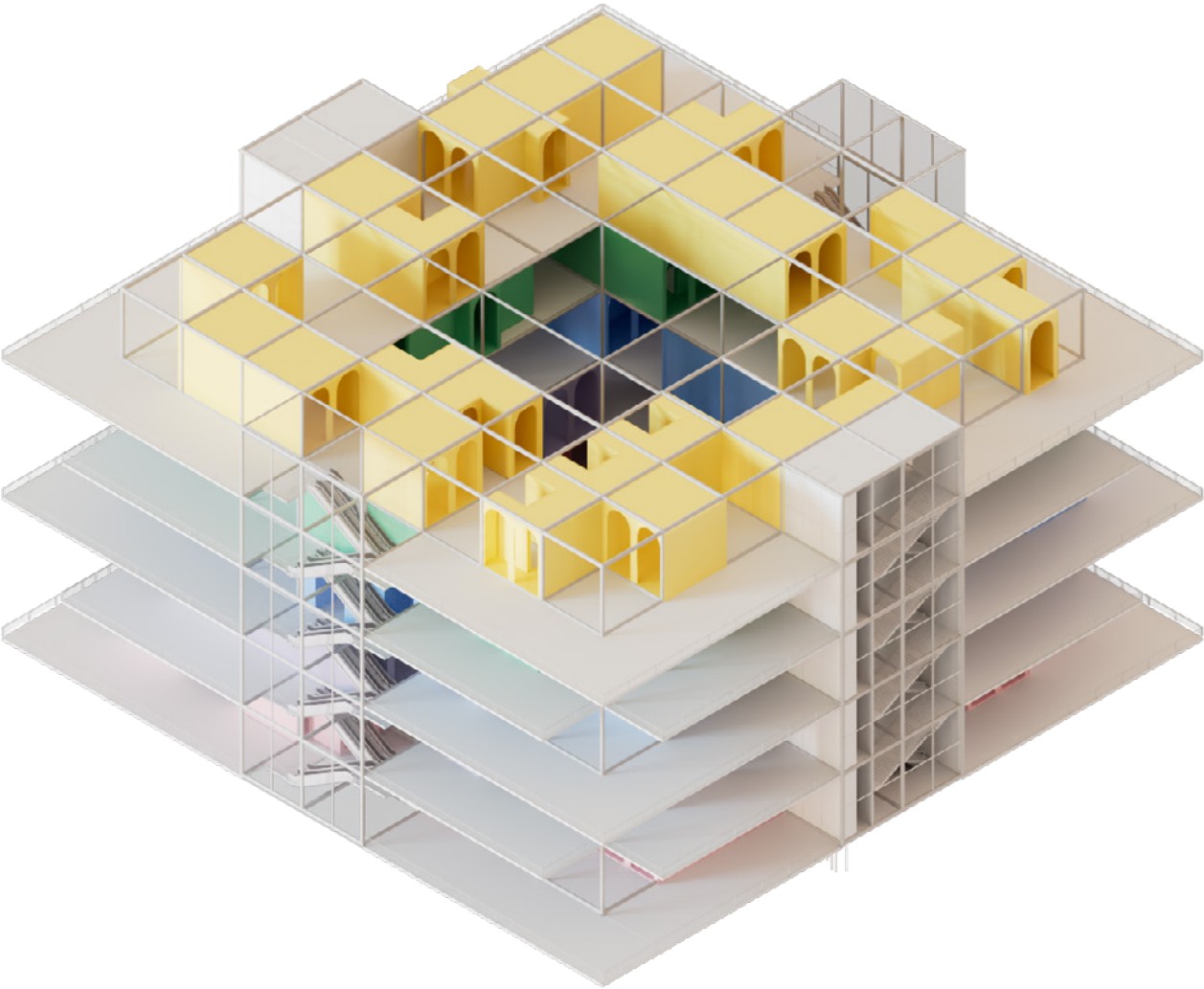
PROGRAM CLUSTERS



PROGRAM BLOCKS



The program blocks are what allow micro-cycles to be created inside the factory. Through program blocks, program clusters are formed to fit the direction of production.



Using the Insulae as the base model, we insert a new narrative inside its architectural formations, opposite of its known "heavy" form.





CHANGING ROOM



PHOTOSHOOT STAGE



ARCHIVE ROOM



KNITTING ROOM





ALCHEMY FASHION SHOW

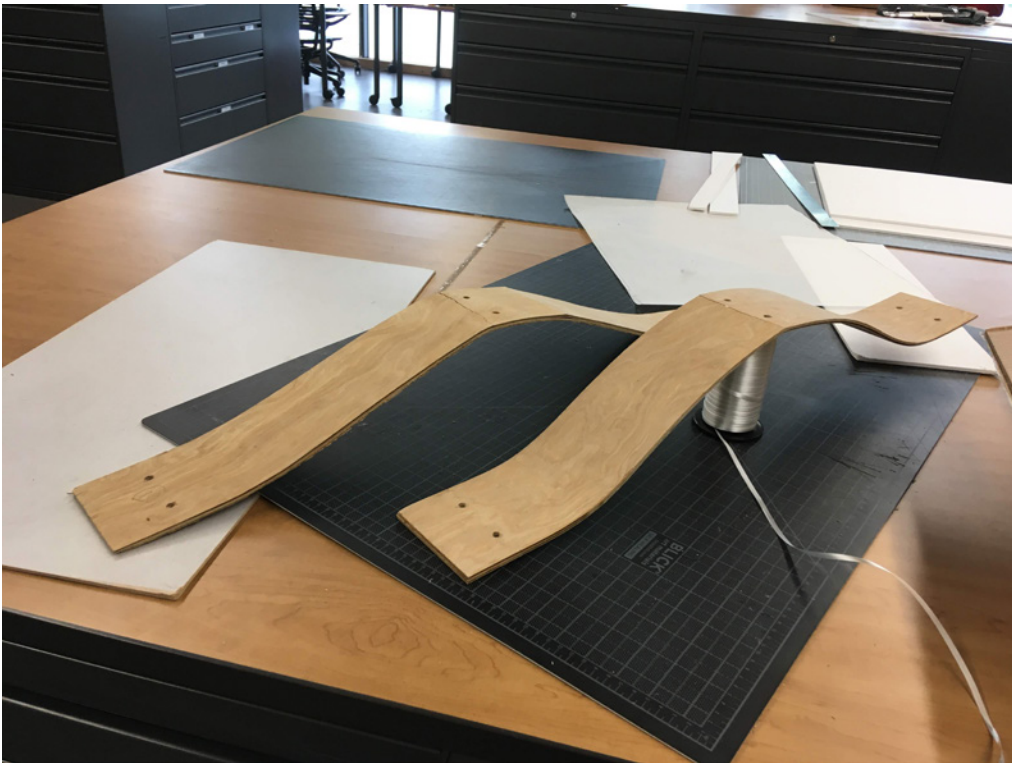
West Valley College  
14000 Fruitvale Ave, Saratoga, CA 95070

Spring 2019  
Coordinator Instructor: Christopher Clancy  
School Project  
Involvement: Design Member  
Roles: Concept Design and Installation

“The West Valley Fashion Show for 2019 by The West Valley Cilker School of Art and Design features designs by current students of the WVC Fashion Design and Apparel Technology program. The event is a collaboration of various departments in the Cilker School of Art & Design including Architecture students, who are designing and building an entrance and wall for the runway space; Digital Media students, who are designing visual elements displayed before the show; Interior Design students, who are designing and staging the VIP Champagne Reception; Music students, who are providing musical accompaniment during the reception; and the Fashion Design students, who are producing lines of clothing that will be modeled during the show.”

\_Show Description\_





A set of basal wood sheets was meticulously crafted for the assembly onto the backdrop wall, and creating welcoming gates at the entrances.

Backdrop Installation Process

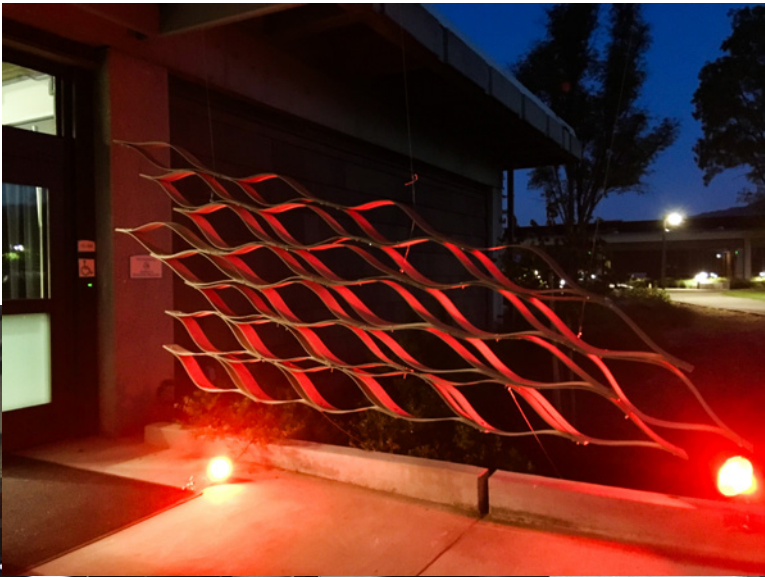
The team leader and I designed the backdrop wall. It embodies a symbolic representation of the Dragon and Phoenix figures.







The VIP entrance welcoming gate represents Water element.



While the student entrance welcoming gate represents Fire element.

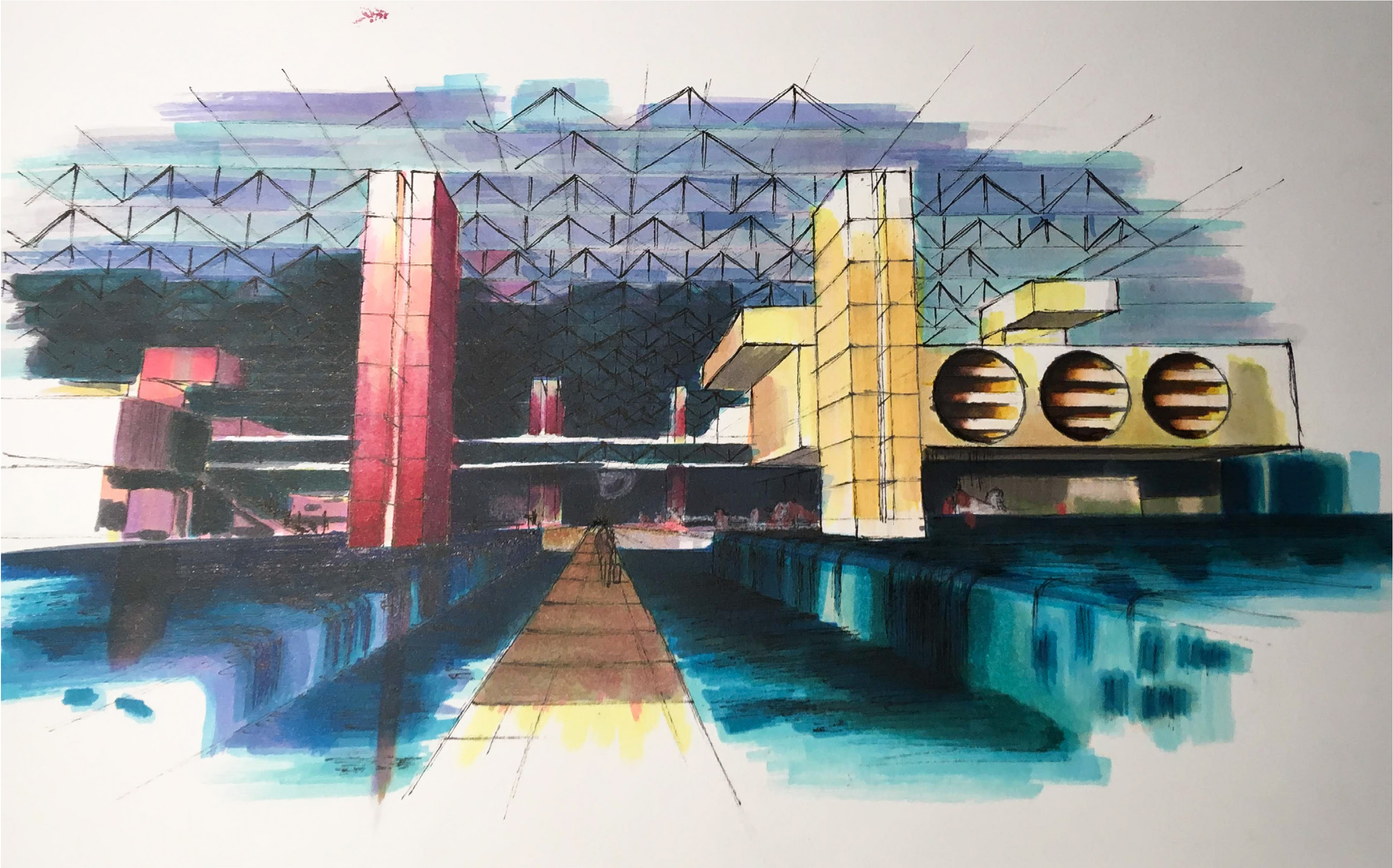




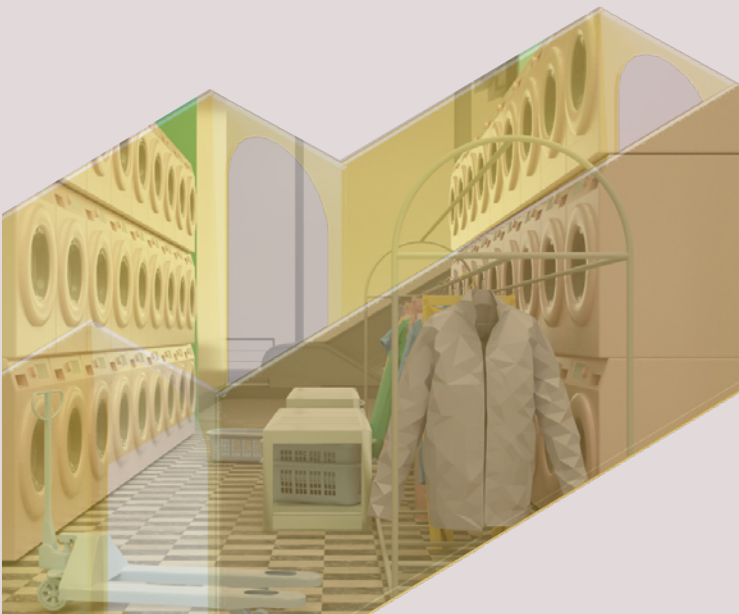
SKETCHES

These are sketch and photographs that I do on the side as hobbies.









**CONTACT:**

email: [nghi\\_nguyen@sciarc.edu](mailto:nghi_nguyen@sciarc.edu)

tel: 669.609.2464