

ITZEL SALAZAR

ARCHITECTURE
STUDENT PORTFOLIO

[SELECTED WORKS]

TABLE OF CONTENTS

[SELECTED WORKS]

"RIVERSIDE HAVEN: REIMAGINING TURTLE BAY"	SPORING TOWER	ALTAMIRA RESIDENCES	ECOPRINT RESIDENCES	KALEIDOSCOPE
04	38	56	46	30
-	-	-	-	-
13	45	65	55	37

URBAN
PLANNING

FRACTAL
ARCHITECTURE

HOUSING

WASTE
TO ENERGY

LUNAR
IMMERSION

14
-
29

LUMINA
VISTA

66
-
67

SENSOR
AMBIGUITY

68
-
71

CABINET OF
CURIOSITIES

72
-
73

MIXED
USED

VISUAL
PERCEPTION

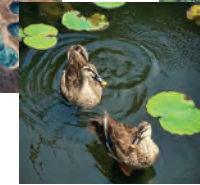
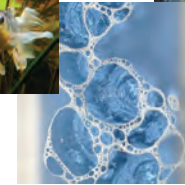
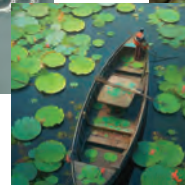
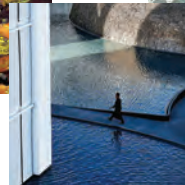
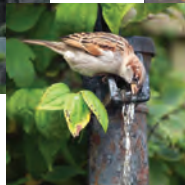
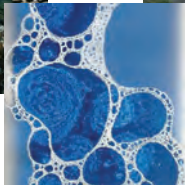
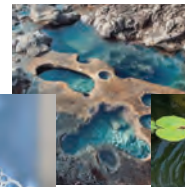
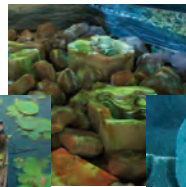
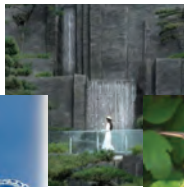
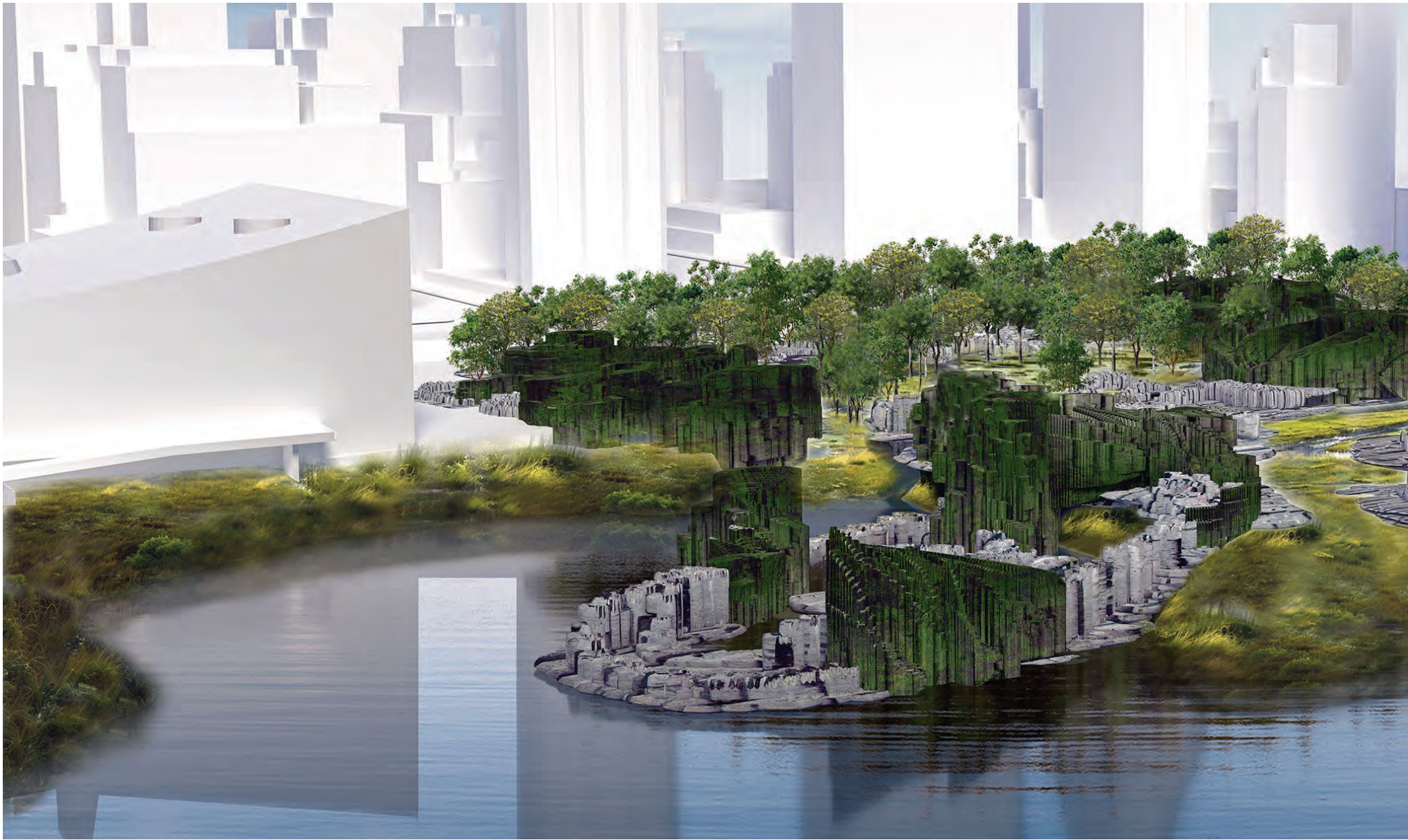
MATERIAL
RESEARCH

MEDIUMS

VISUALIZATION

ENTIRE PORTFOLIO AVAILABLE WITH QR CODE







ARCH 806: WAYS OF WATER RIVERBEDS-TO-ROOFTOPS

PRIMARY: SULAN KOLATAN
EXTERNAL SECONDARY: TYLER TABA
PRATT M.ARCH
SPRING 2024

“RIVERSIDE HAVEN: REIMAGINING TURTLE BAY”

THIS ARCHITECTURE STUDIO APPLIED A RIVER DAYLIGHTING STRATEGY BY IMPLEMENTING IT ALONG THE PATH OF DE VOOR’S MILL STREAM IN MIDTOWN MANHATTAN. BY REINTRODUCING A SYNTHETIC VERSION OF A ‘LOST RIVER’ ECOLOGY TO THE CITY, THE PROJECT UNDERSCORES AN UNDERSTANDING OF WATER AS A DYNAMIC MEDIUM, TRANSITIONING FROM RAINWATER TO RIVER WATER. IN TANDEM, “RIVERSIDE HAVEN: REIMAGINING TURTLE BAY” ENDEAVORS TO TRANSFORM THE EAST RIVER’S TURTLE BAY AREA INTO A SUSTAINABLE URBAN OASIS. THROUGH THE RESTORATION OF THE BAY WITH A MICRO FOREST AND WETLANDS, THE PROJECT NOT ONLY ENHANCES BIODIVERSITY BUT ALSO FOSTERS PUBLIC ACCESS TO THE UN PLAZA.

THIS ENDEAVOR IS MADE POSSIBLE THROUGH A COLLABORATIVE EFFORT INVOLVING GOVERNMENTAL ENTITIES, NON-PROFITS, AND THE UN, ALL AIMING TO ADVANCE THE SUSTAINABLE DEVELOPMENT GOALS. BY INCORPORATING FRACTAL ARCHITECTURE, CHARACTERIZED BY SELF-SIMILAR, REPEATING PATTERNS INSPIRED BY NATURAL SYSTEMS, THE PROJECT ACHIEVES AN AESTHETICALLY APPEALING AND ENVIRONMENTALLY SUSTAINABLE DESIGN. THROUGH THE SEAMLESS INTEGRATION OF FRACTAL GEOMETRY, THE PROJECT HARMONIOUSLY BLENDS THE RESTORED RIVER AND BIODIVERSE LANDSCAPES WITH THE URBAN FABRIC OF MIDTOWN MANHATTAN AND TURTLE BAY, RESULTING IN FUNCTIONAL, EFFICIENT, AND VISUALLY CAPTIVATING SPACES THAT REFLECT THE INTERCONNECTEDNESS



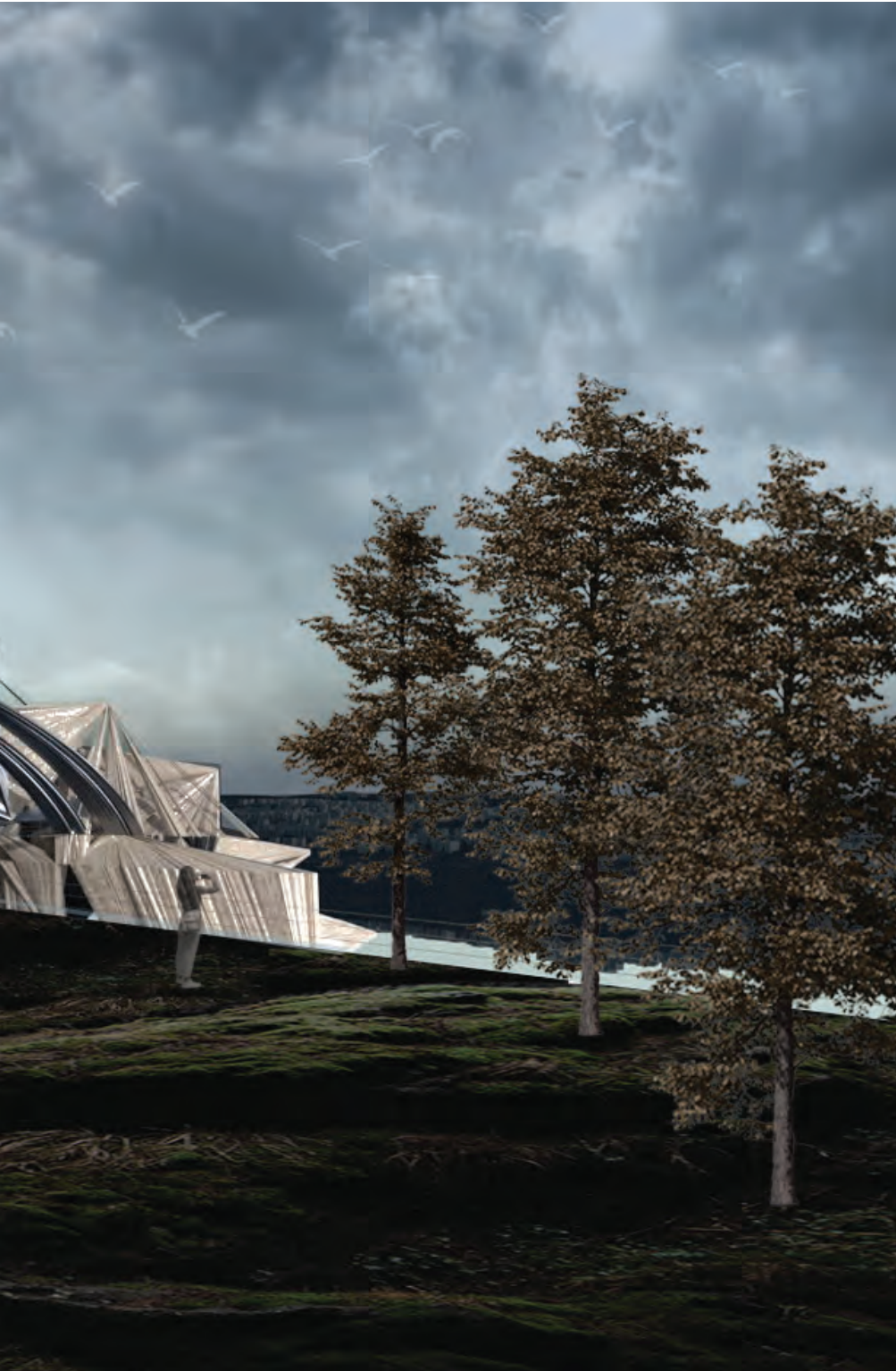
AXONOMETRIC
DRAWING





COLLAGE





ARCH 805: MUSEUM OF EMOTIONS #4

PRIMARY: WILLIAM MACDONALD
CO-TEACHER: ALEKSANDRA MAKSYMOWA
PRATT M.ARCH
FALL 2023

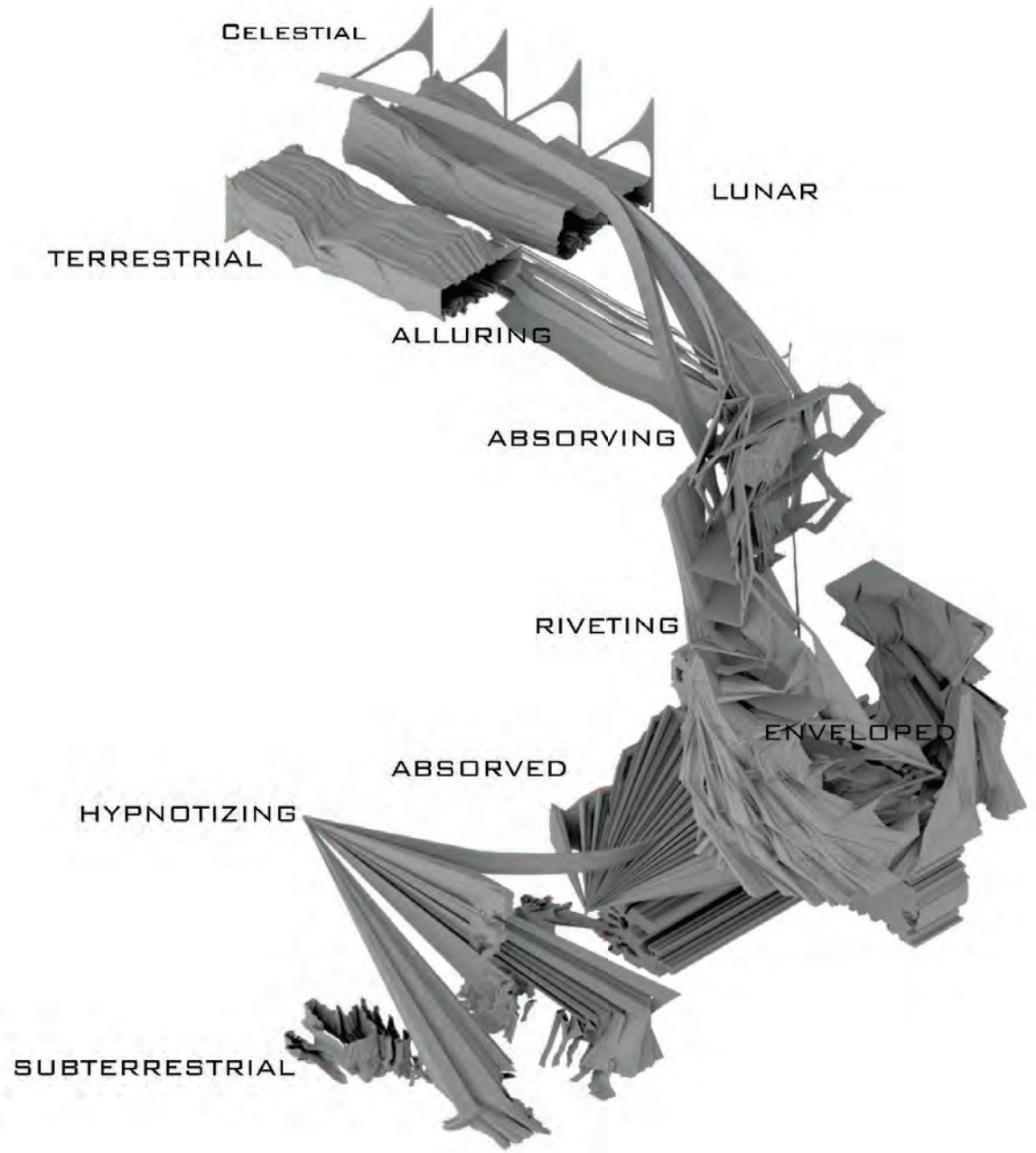
LUNAR IMMERSION

“LUNAR IMMERSION” PIONEERS A BOLD DEPARTURE FROM TRADITIONAL COGNITIVE THEORIES IN ARCHITECTURE, EMBRACING CUTTING-EDGE CONCEPTS SUCH AS ECOLOGICAL PERCEPTION/ACTION THEORY, DIRECT PERCEPTION, EVOLUTIONARY THEORY, AND DYNAMICAL SYSTEMS (COMPLEXITY) THEORY. REJECTING THE NOTION OF SPACE AS A PASSIVE CONTAINER, THIS ENDEAVOR REDEFINES IT AS AN ACTIVE PARTICIPANT IN SHAPING HUMAN BEHAVIOR AND EMOTIONS THROUGH THE LENS OF AFFORDANCES.

AT ITS CORE, THIS INITIATIVE CHALLENGES CONVENTIONAL DESIGN PSYCHOLOGY BY CRAFTING ENVIRONMENTS THAT INVITE SPECIFIC ACTIONS AND EXPERIENCES, LEVERAGING INSIGHTS FROM CINEMATIC STORYTELLING TO CREATE DEEPLY IMMERSIVE SPACES. BY DISSECTING FILMMAKING TECHNIQUES AND INTEGRATING THEORIES OF PERCEPTION AND COGNITION, THE PROJECT AIMS TO EVOKE TARGETED EMOTIONAL RESPONSES FROM OCCUPANTS, TRANSCENDING THE ORDINARY TO OFFER PROFOUNDLY RESONANT EXPERIENCES.

IN ESSENCE, THIS VISIONARY APPROACH TO ARCHITECTURE HARNESSSES INNOVATIVE DESIGN PSYCHOLOGY TO CREATE ENVIRONMENTS THAT CAPTIVATE AND INSPIRE. THROUGH ITS EXPLORATION OF CUTTING-EDGE THEORIES AND REJECTION OF TRADITIONAL COGNITIVE FRAMEWORKS, “LUNAR IMMERSION” SEEKS TO PUSH THE BOUNDARIES OF WHAT IS POSSIBLE IN ARCHITECTURAL DESIGN, OFFERING TRANSFORMATIVE EXPERIENCES FOR THOSE WHO INTERACT WITH ITS SPACES.

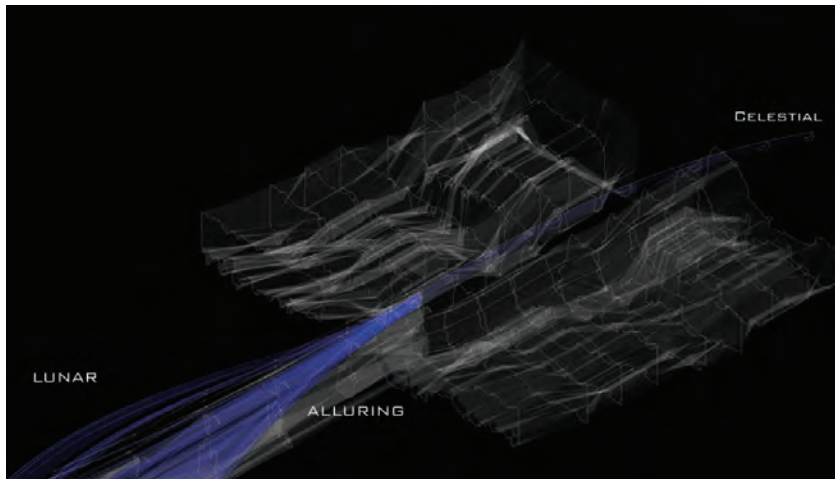




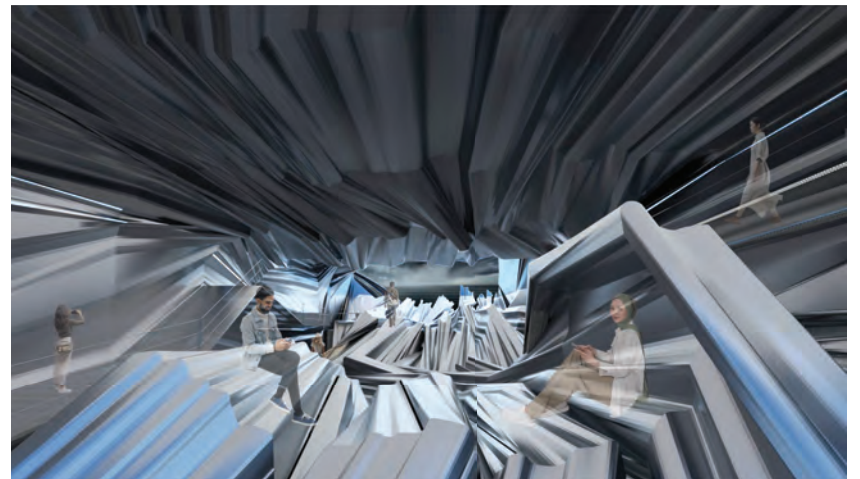
CONCEPTUAL DIAGRAM + MASSING+ IDEONOMIES



ALLURING / TERRESTRIAL



CONCEPTUAL DIAGRAM + MASSING+ IDEONOMIES



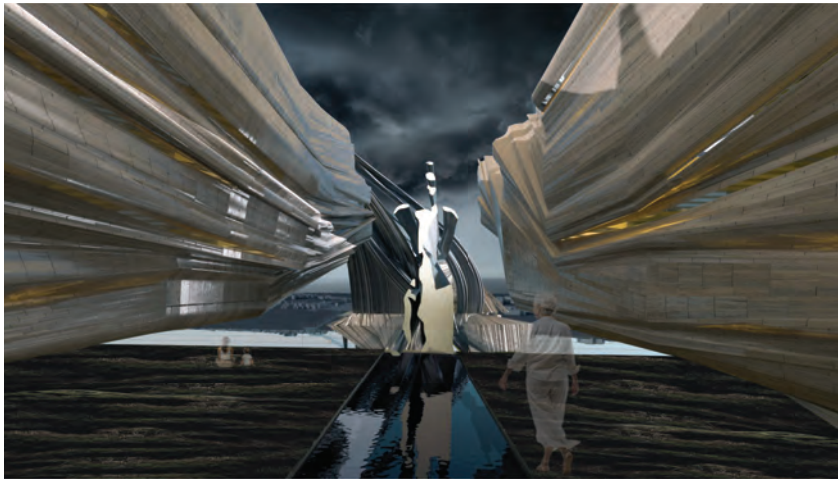
ALLURING / CELESTIAL



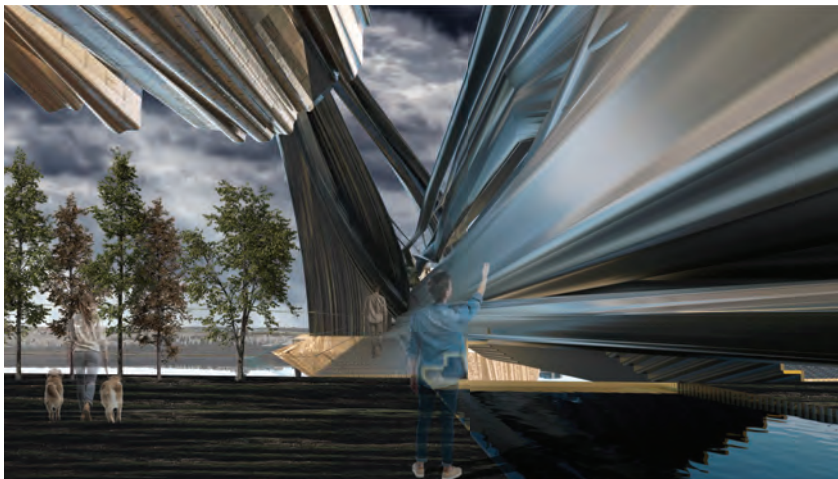
ALLURING / CELESTIAL



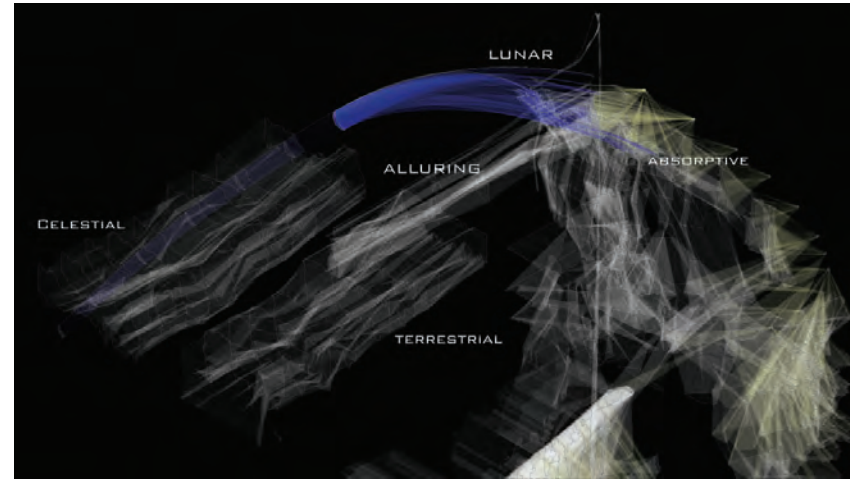
ALLURING / ABSORPTIVE



ALLURING

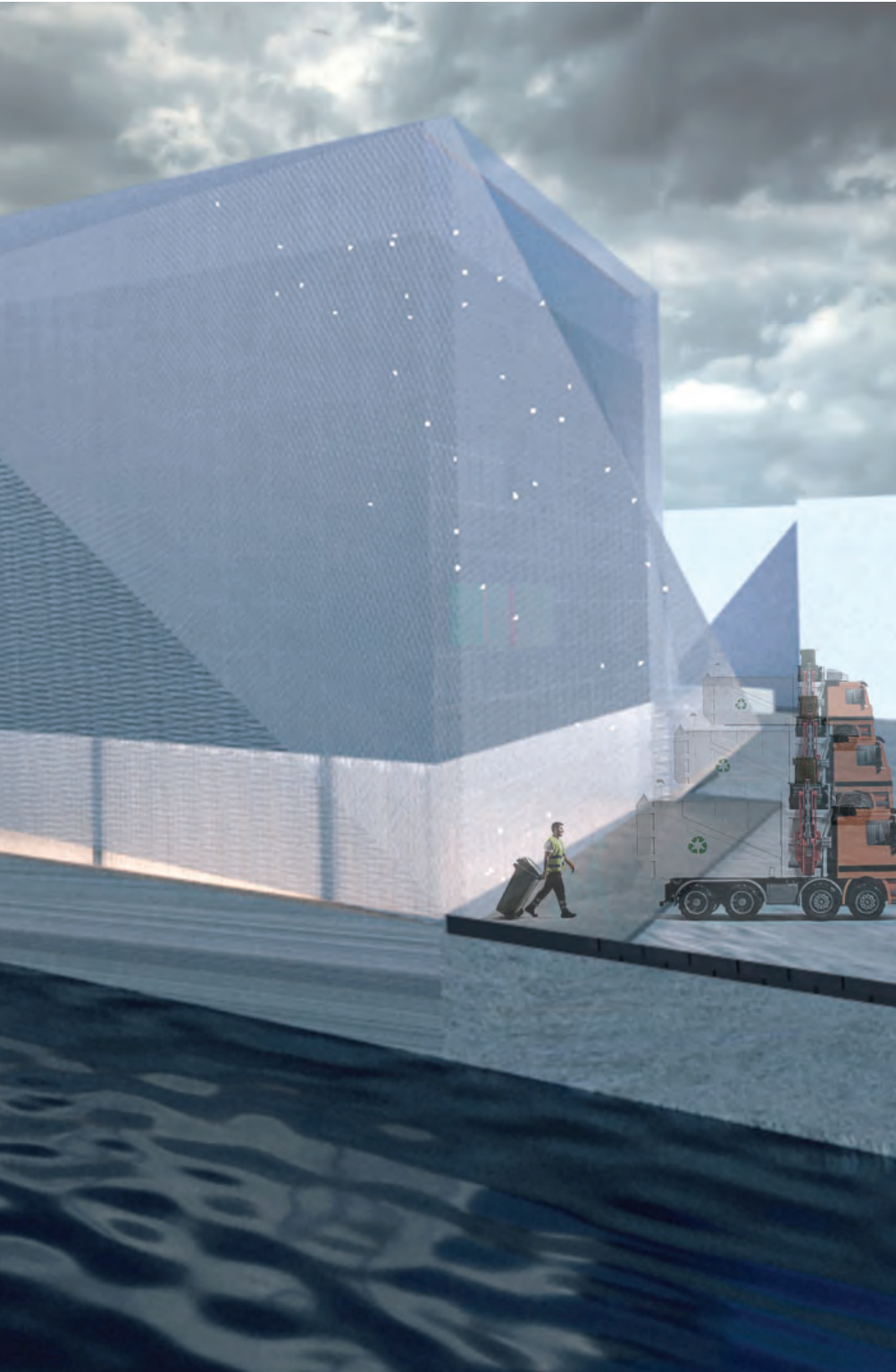


ALLURING



CONCEPTUAL DIAGRAM + MASSING+ IDEONOMIES





ARCH 805: INTEGRATED STUDIO

PRIMARY: ALEXANDRA BARKER

STUDIO PARTNER: MARI SPARACINO

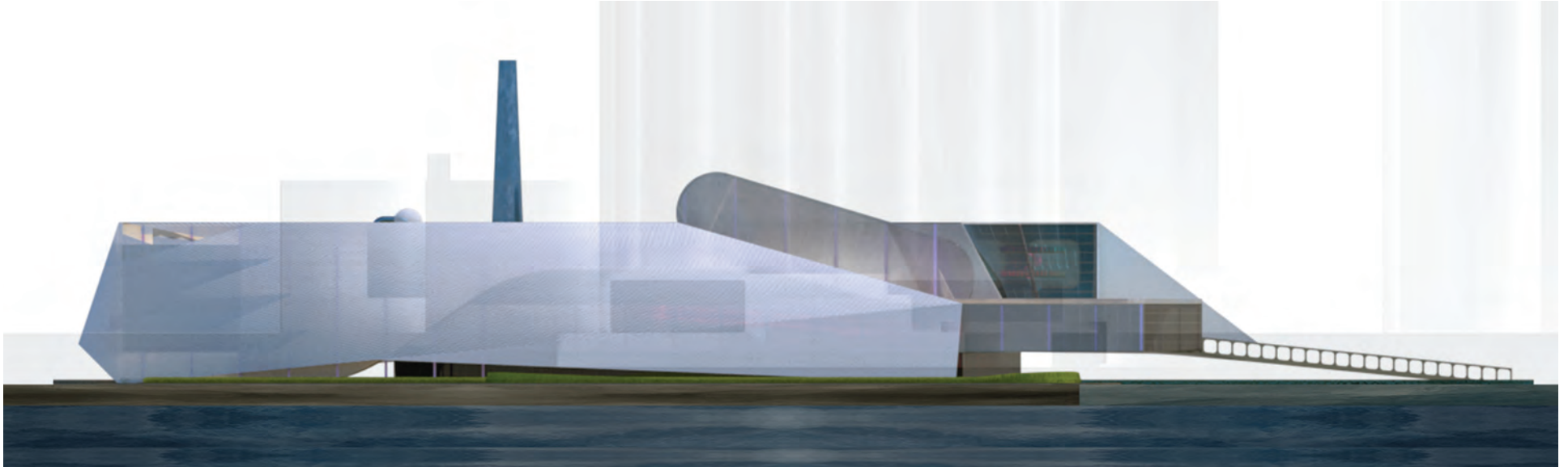
PRATT M.ARCH

SPRING 2023

KALEIDOSCOPE

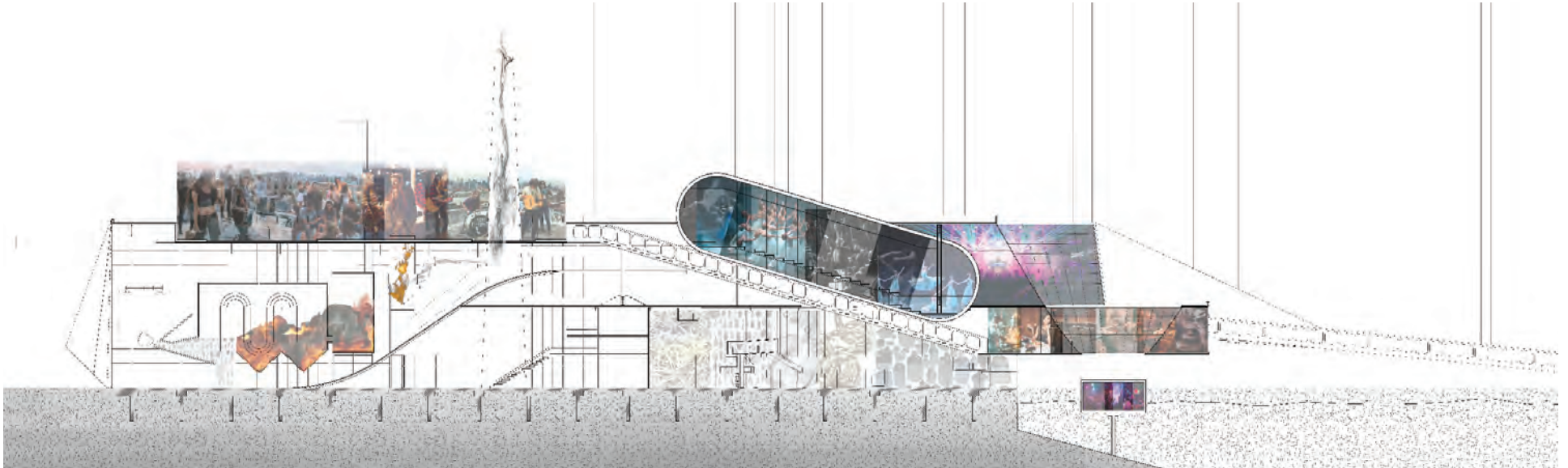
THE PROPOSAL ADVOCATES FOR WASTE-TO-ENERGY (WTE) AND RECYCLING FACILITIES ACROSS BROOKLYN, THE BRONX, QUEENS, AND STATEN ISLAND TO TACKLE NEW YORK CITY'S WASTE MANAGEMENT ISSUES. WITH THE CITY PRODUCING 14 MILLION TONS OF WASTE ANNUALLY, MUCH OF WHICH IS SENT OUT-OF-STATE, THIS STRATEGIC APPROACH AIMS TO REDUCE POLLUTION AND TRANSPORTATION STRAIN. DRAWING INSPIRATION FROM SUCCESSFUL FACILITIES IN LONG ISLAND, THE INITIATIVE EMPHASIZES LOCALIZED WASTE PROCESSING WHILE HARNESSING THE CITY'S ENERGY POTENTIAL.

THE INTEGRATION OF NIGHTCLUBS ALONGSIDE WASTE MANAGEMENT FACILITIES SERVES TO DIVERSIFY USAGE AND PROMOTE COMMUNITY ENGAGEMENT. REPURPOSING PART OF THE INFRASTRUCTURE FOR RECREATIONAL AND CULTURAL ACTIVITIES NOT ONLY ENHANCES RESIDENTS' QUALITY OF LIFE BUT ALSO CONTRIBUTES TO ECONOMIC REVITALIZATION. THROUGH STRATEGIC LOCALIZATION AND INNOVATIVE PROGRAMMING, THE PROPOSAL SETS A PRECEDENT FOR HOLISTIC URBAN DEVELOPMENT, ADDRESSING WASTE MANAGEMENT CHALLENGES WHILE FOSTERING A VIBRANT AND SUSTAINABLE URBAN ENVIRONMENT. AND ECONOMIC REVITALIZATION. REPURPOSING PART OF THE INFRASTRUCTURE TO ACCOMMODATE RECREATIONAL AND CULTURAL AMENITIES NOT ONLY PROVIDES ENTERTAINMENT OPTIONS FOR RESIDENTS BUT ALSO TRANSFORMS WASTE MANAGEMENT SITES INTO VIBRANT SOCIAL HUBS. THROUGH STRATEGIC LOCALIZATION, INNOVATIVE PROGRAMMING, AND SUSTAINABLE DESIGN PRINCIPLES, THE INITIATIVE SETS A PRECEDENT FOR HOLISTIC URBAN DEVELOPMENT ADDRESSING WASTE MANAGEMENT CHALLENGES WHILE ENHANCING RESIDENTS' QUALITY OF LIFE.



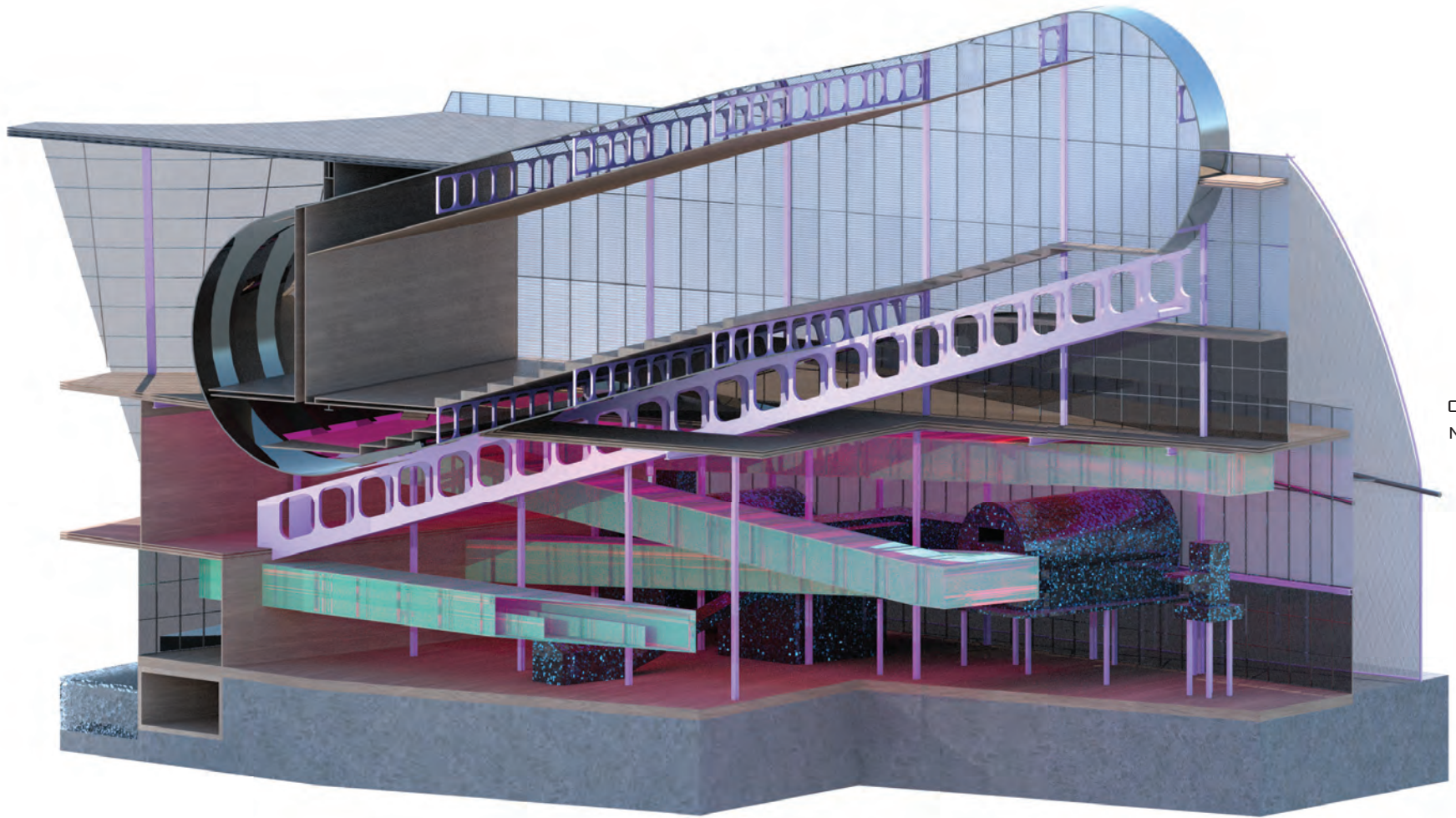
NORTH ELEVATION

1:16

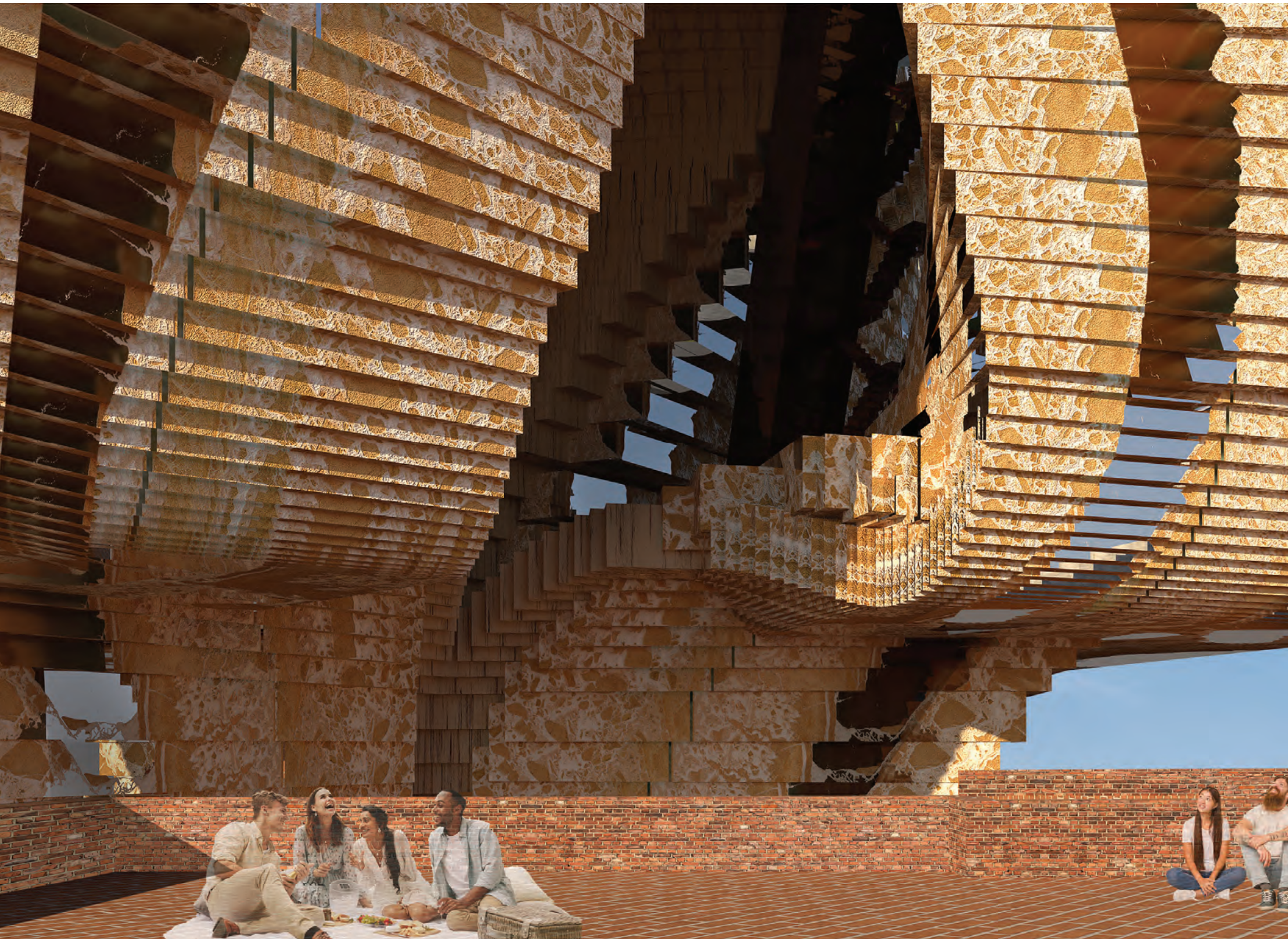


NORTH SECTION

1:16



CHUNK
MODEL





ARCH 4601: URBAN QUALITIES & MATERIALITIES

PRIMARY: SULAN KOLATAN
PRATT M.ARCH
FALL 2022

SPORING TOWER

THE SPORING TOWER IS A DYNAMIC URBAN FARMING COMMUNITY THAT BRINGS TOGETHER EDUCATORS, MAKERS, ENGINEERS, ARCHITECTS, AND SCIENTISTS TO EXPLORE SUSTAINABLE PRACTICES. CENTRAL TO ITS MISSION IS USING MYCELIUM TO REDUCE PLASTIC, FOAM, AND CONSTRUCTION WASTE. THE TOWER'S BASE FEATURES A PLAYGROUND AND GARDEN FOR NEIGHBORHOOD CHILDREN TO LEARN ABOUT SUSTAINABILITY. THIS GARDEN WILL EXTEND THROUGH THE TOWER, FORMING "SPORES" OF WORKSHOPS THAT TEACH TRADES AND IMPROVE THE ECONOMIC STATUS OF RESIDENTS.

THESE WORKSHOPS FOCUS ON MYCELIUM'S APPLICATIONS, CREATING SUSTAINABLE FOAM, PACKAGING, BEAUTY PRODUCTS, BUILDING MATERIALS, AND FOOD ITEMS. BY EDUCATING THE PUBLIC AND SELLING THESE PRODUCTS, THE WORKSHOPS PROMOTE SUSTAINABILITY AND PROVIDE ECONOMIC BENEFITS TO FARRAGUT RESIDENTS. THIS INITIATIVE AIMS TO UPLIFT THE COMMUNITY WHILE FOSTERING ENVIRONMENTAL AWARENESS.

THE DESIGN STUDIO FOR THE SPORING TOWER EMPHASIZES CONTEMPORARY ARCHITECTURAL URBANITY AND THE RELATIONSHIP BETWEEN URBAN FORM AND MATERIALS. STUDENTS WILL ADDRESS MIXED LAND USE, BUILDING FUNCTIONS, TRANSPORTATION, AND ENVIRONMENTAL IMPACT, FOCUSING ON BUILDING ENCLOSURES AND SITE SPECIFICS. COORDINATED WITH TECHNOLOGY I AND II, THE PROJECT INTEGRATES STRUCTURAL AND MATERIAL REQUIREMENTS, ENHANCING STUDENTS' COMPREHENSIVE DESIGN SKILLS. THE TOWER'S RESIDENTIAL AREA OFFERS EFFICIENT, COMPACT UNITS WITH UP TO TWO BEDROOMS FOR FARRAGUT RESIDENTS, BLENDING URBAN FARMING WITH PRACTICAL LIVING SOLUTIONS.



Leather



Food



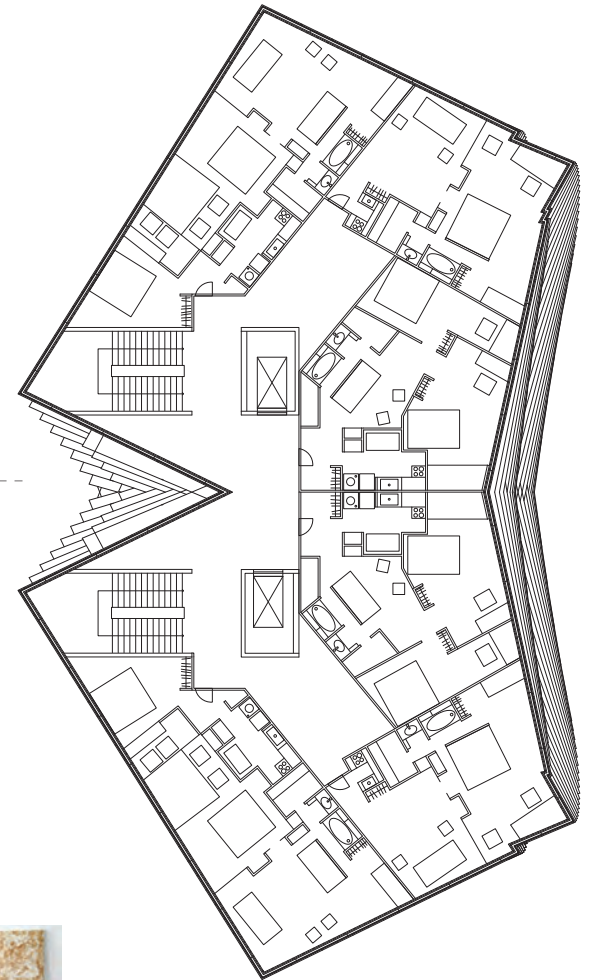
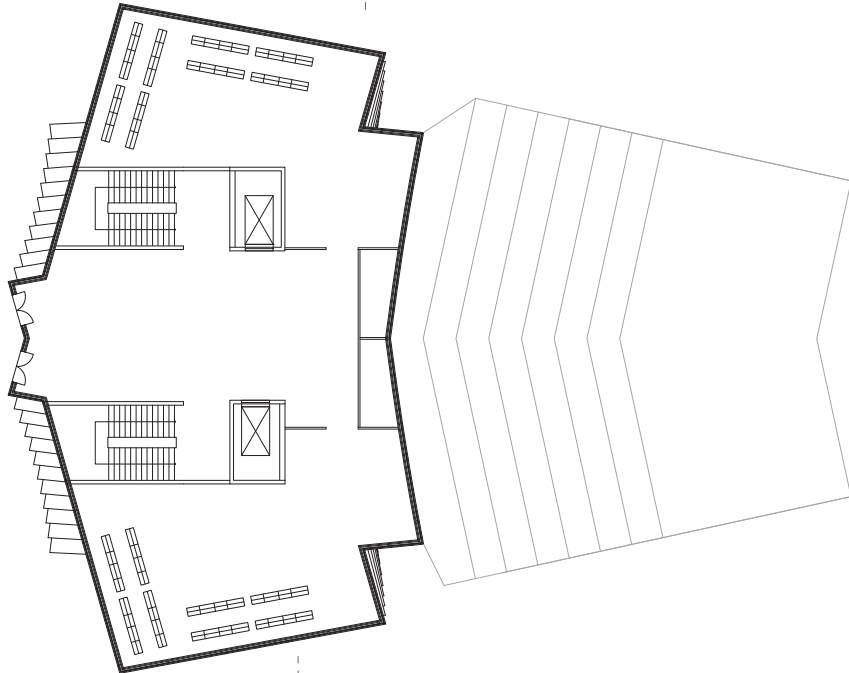
Beauty



High-Performance Foam



GROUND FLOOR 1:16



RESIDENTIAL FLOOR 1:16

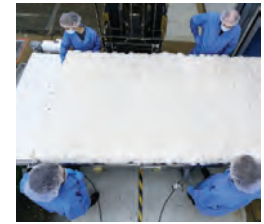
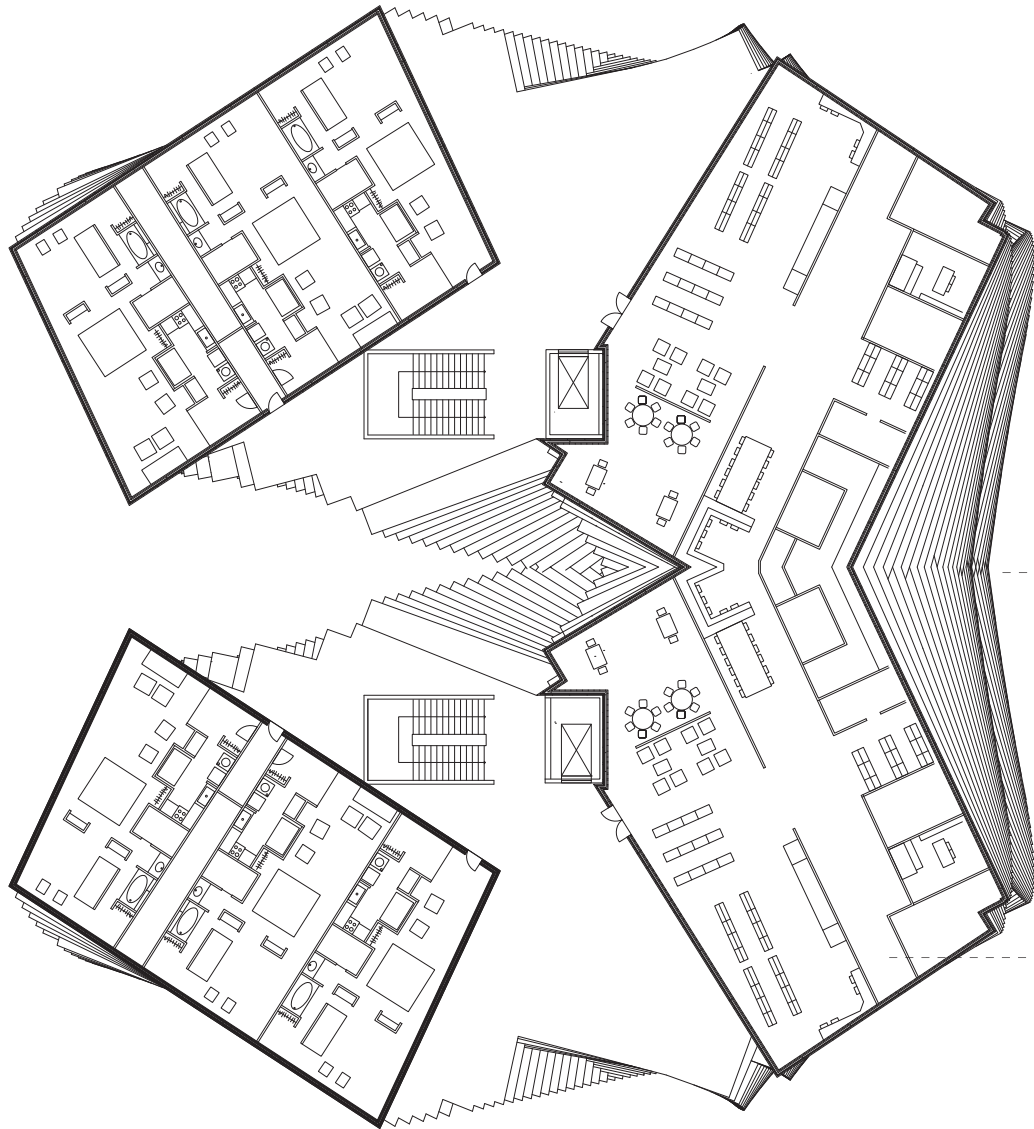
1:16



Building and Construction



Mushroom® Packaging



MIXED USED FLOOR

1:16

ITZEL SALAZAR

147 TEHAMA ST.

BROOKLYN, NEW YORK, 11218

IZZYARCHITECTURE@GMAIL.COM

(915)243-8084

[HTTPS://WWW.LINKEDIN.COM/IN/ITZELSALAZAR/](https://www.linkedin.com/in/itzelsalazar/)

OBJECTIVE

PASSIONATE AND INNOVATIVE MASTER OF ARCHITECTURE GRADUATE WITH A KEEN INTEREST IN COLLABORATIVE DESIGN PROCESSES, COMMUNITY-DRIVEN PROJECTS, AND EXHIBITION WORK. SEEKING AN ENTRY-LEVEL POSITION WHERE I CAN LEVERAGE MY DESIGN SKILLS AND DIVERSE EXPERIENCES TO CONTRIBUTE TO IMPACTFUL ARCHITECTURAL PROJECTS, ENGAGE WITH COMMUNITIES, AND PARTICIPATE IN EXHIBITIONS THAT PROMOTE ARCHITECTURAL INNOVATION AND SOCIAL IMPACT. EAGER TO JOIN A DYNAMIC TEAM WHERE I CAN FURTHER DEVELOP MY EXPERTISE AND MAKE MEANINGFUL CONTRIBUTIONS TO THE BUILT ENVIRONMENT.

EDUCATION

MASTER OF ARCHITECTURE

PRATT INSTITUTE, BROOKLYN, NEW YORK

MAY 2024

BACHELOR OF SCIENCE IN ARCHITECTURE

TEXAS TECH UNIVERSITY, EL PASO, TEXAS

MAY 2022

ASSOCIATE OF ARTS AND SCIENCE IN ARCHITECTURE

EL PASO COMMUNITY COLLEGE, EL PASO, TEXAS

MAY 2020

PROFESSIONAL EXPERIENCE

SOLAR SUSTAINABILITY PLANNING & DESIGN INTERN

WRIGHT & DALBIN ARCHITECTS, INC. - EL PASO, TX

SEPTEMBER 2021 TO JULY 2022

- CONDUCTED COMPREHENSIVE SOLAR FEASIBILITY ASSESSMENTS AND COST ESTIMATIONS FOR ARCHITECTURAL PROJECTS, ENHANCING SUSTAINABILITY INITIATIVES.
- COLLABORATED WITH DESIGN TEAMS TO INTEGRATE SOLAR-READY FEATURES INTO RESIDENTIAL AND COMMERCIAL STRUCTURES, OPTIMIZING ENERGY EFFICIENCY AND ENVIRONMENTAL IMPACT.
- PREPARED DETAILED REPORTS AND PRESENTATIONS FOR CLIENT MEETINGS, EFFECTIVELY COMMUNICATING PROJECT RECOMMENDATIONS AND BENEFITS.

HISTORIC PRESERVATION INTERN

EL PASO COUNTY HISTORICAL COMMISSION - EL PASO, TX

JANUARY 2023 TO JUNE 2023

- ASSISTED IN THE DOCUMENTATION AND ASSESSMENT OF HISTORIC BUILDINGS, CONTRIBUTING TO PRESERVATION EFFORTS AND COMMUNITY HERITAGE AWARENESS.
- PARTICIPATED IN THE DEVELOPMENT OF PRESERVATION PLANS AND GUIDELINES, ENSURING THE CULTURAL INTEGRITY OF HISTORICAL SITES.
- PRESENTED FINDINGS AND RECOMMENDATIONS AT BOARD MEETINGS, FACILITATING INFORMED DECISION-MAKING AND COMMUNITY ENGAGEMENT.

3D PRINTING AND DESIGN INSTRUCTOR

CONCORDE EDUCATION, NEW YORK, NEW YORK

JUNE 2023 - PRESENT

- **COLLABORATION:** REGULARLY MEET WITH THE DIRECTOR OF EDUCATIONAL DEVELOPMENT TO DISCUSS AND REFINE INSTRUCTIONAL STRATEGIES.
- **SESSION FACILITATION:** PLAN AND CONDUCT INTERACTIVE LEARNING SESSIONS FOCUSED ON 3D DESIGN AND PRINTING TECHNIQUES.
- **STUDENT ASSISTANCE:** GUIDE STUDENTS IN DEVELOPING PROFICIENCY IN COMPUTER SCIENCE, 3D DESIGN, AND CODING.
- **COMMUNICATION:** MAINTAIN OPEN AND CONSISTENT COMMUNICATION WITH THE DIRECTOR TO ENSURE ALIGNMENT AND EFFECTIVENESS OF EDUCATIONAL PROGRAMS.
- **ROLE MODELING:** EXHIBIT AND ENCOURAGE PROFESSIONAL ACADEMIC AND SOCIAL BEHAVIORS.
- **ADDITIONAL TASKS:** PERFORM OTHER DUTIES AS ASSIGNED TO SUPPORT THE EDUCATIONAL DEVELOPMENT INITIATIVES.

TECHNICAL SKILLS:

- RHINO
- GRASSHOPPER
- ADOBE CREATIVE CLOUD
- VRAY
- REVIT
- ADOBE CREATIVE CLOUD

CERTIFICATIONS:

- HISTORIC PRESERVATION
JUNE 2022 TO PRESENT

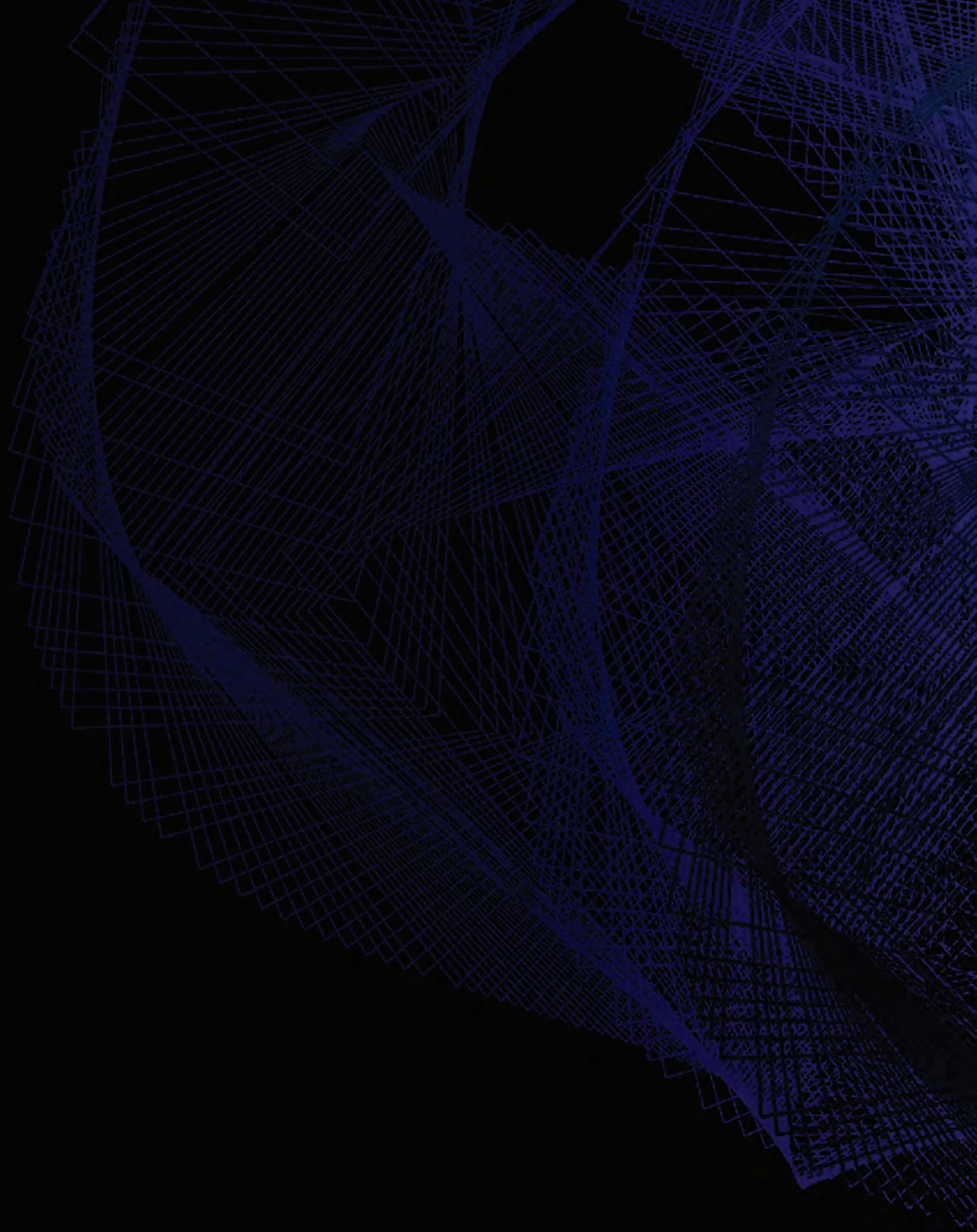
B.S OF ARCHITECTURE WITH HISTORIC PRESERVATION CERTIFICATE AT TEXAS TECH UNIVERSITY, 2022.

LANGUAGES:

- ENGLISH
- SPANISH

DESIGN SKILLS:

- CONCEPTUAL DESIGN
- SCHEMATIC DESIGN
- SITE ANALYSIS
- SPACE PLANNING
- ARCHITECTURAL DRAFTING
- MODEL MAKING AND FABRICATION
- RENDERING AND VISUALIZATION



ITZEL SALAZAR

ARCHITECTURE STUDENT PORTFOLIO
M.ARCH - PRATT GAUD 2024
BS.ARCH - TEXAS TECH U. 2022

IZZYARCHITECTURE@GMAIL.COM

915-243-8084

147 TEHAMA,
BROOKLYN, NY

11218