



Design Portfolio

Noah Cheanvechai | Spring 2021-Fall 2023

Table of Contents

4- Architectural Process Through Sushi Making

Using the process of sushi making and plating to inspire graphics, product design, and architecture.

8- The School of Hope

A design for a drug rehabilitation center using Corbusian design as an inspiration.

12- Ottawa Ecological Research Center

Creating an ecological research community in the mountains in Michigan.

16- Aberdeen Cultural District

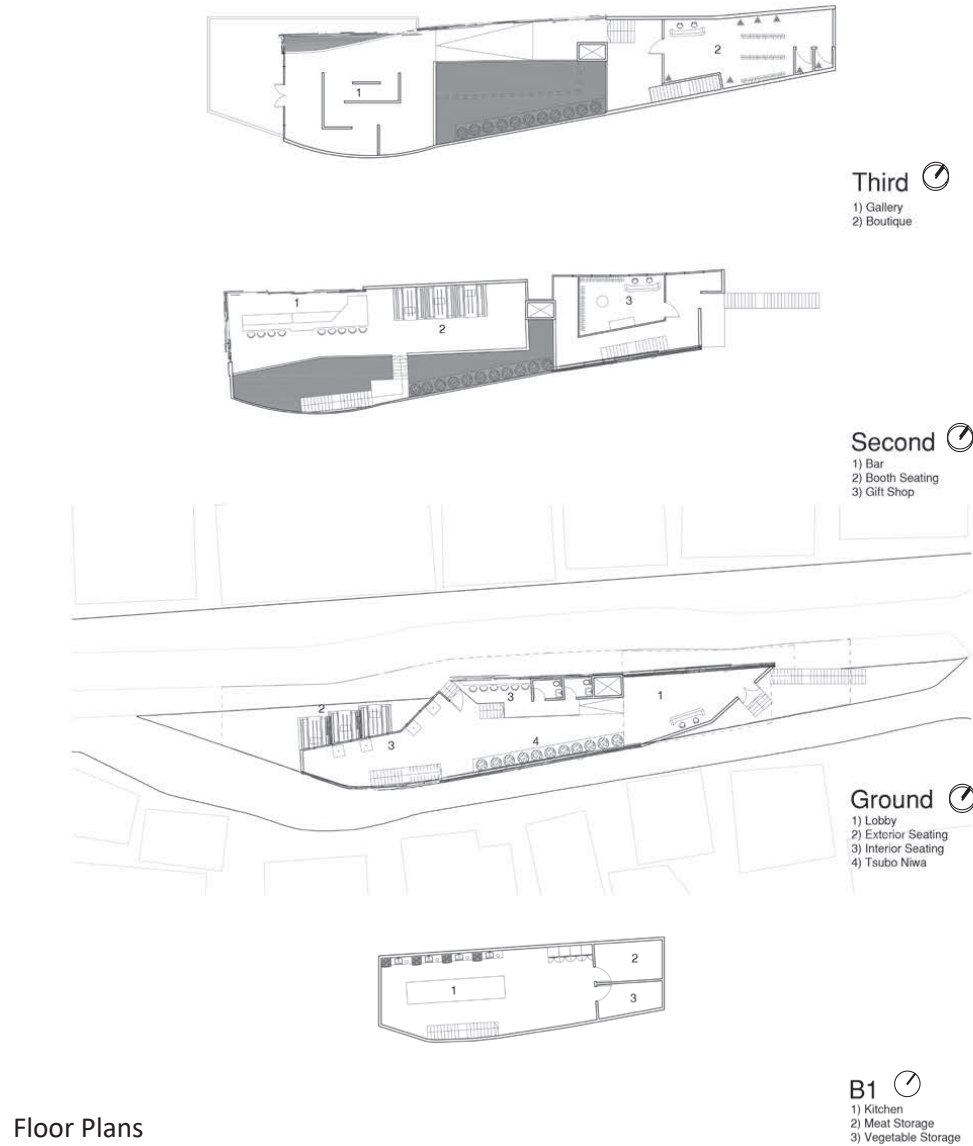
Reimagining Aberdeen Scotland’s harbour at an urban scale by creating a new cultural and arts district.

20- Thames Garden Bridge

Designing an urban garden bridge intervention that crosses the Thames River.

Architectural Process Through Sushi Making

Noah Cheanvechai | Spring 2021 | Advanced Design 1 | Prof. Stan Russel



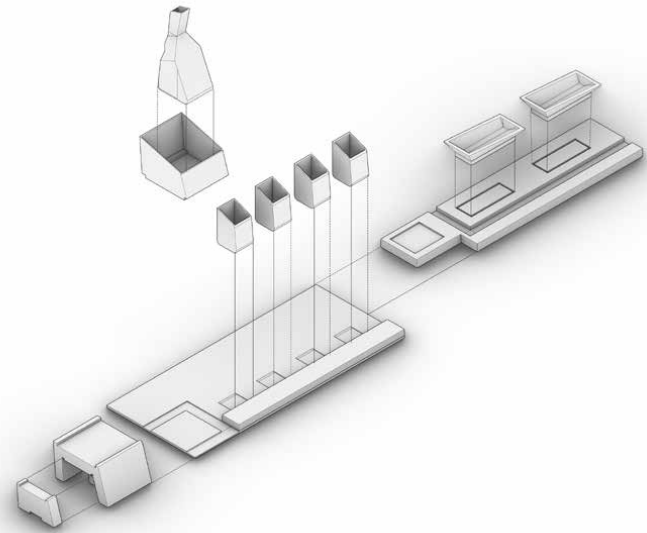
Perspective Looking at Lobby and Dining Area



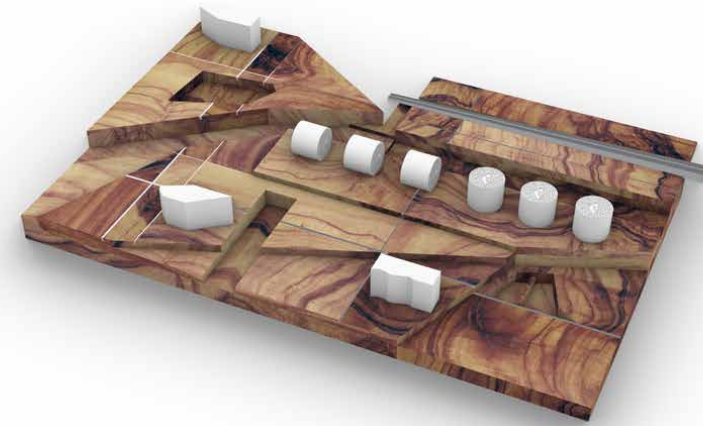
Perspective Looking At Hallway To Gallery Space



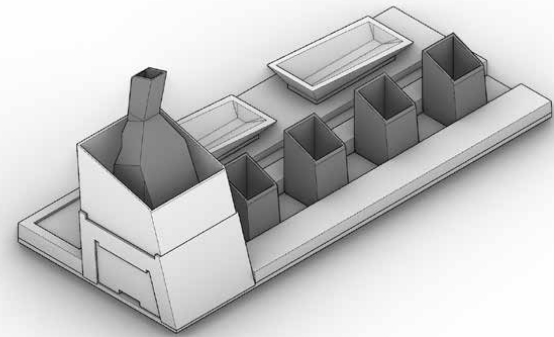
This project began with designing sushi rolls and then translating those into graphic designs and product design for plating and dining. These were then used to help inform the layout and design of the building. The products are intended to be incorporated into the program for daily use. The site is located on a lot in Tokyo adjacent to what is known as Cat Street. The building itself is a hybrid between dining and retail. The northeastern side of the project houses primarily retail, containing a gift shop and a boutique. The southwestern portion contains a sushi restaurant and bar, with exterior dining areas to activate the sidewalk. The top floor plays host to a gallery space and an exterior covered balcony.



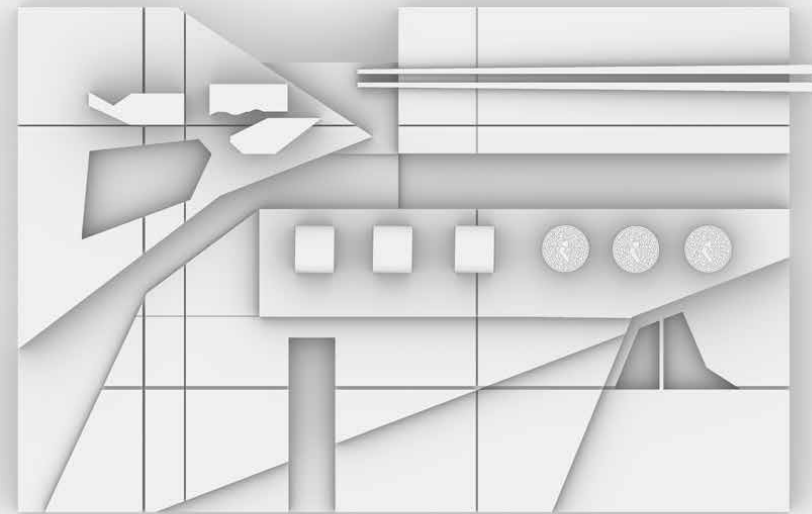
Atsuakan Sake Set Exploded Axonometric



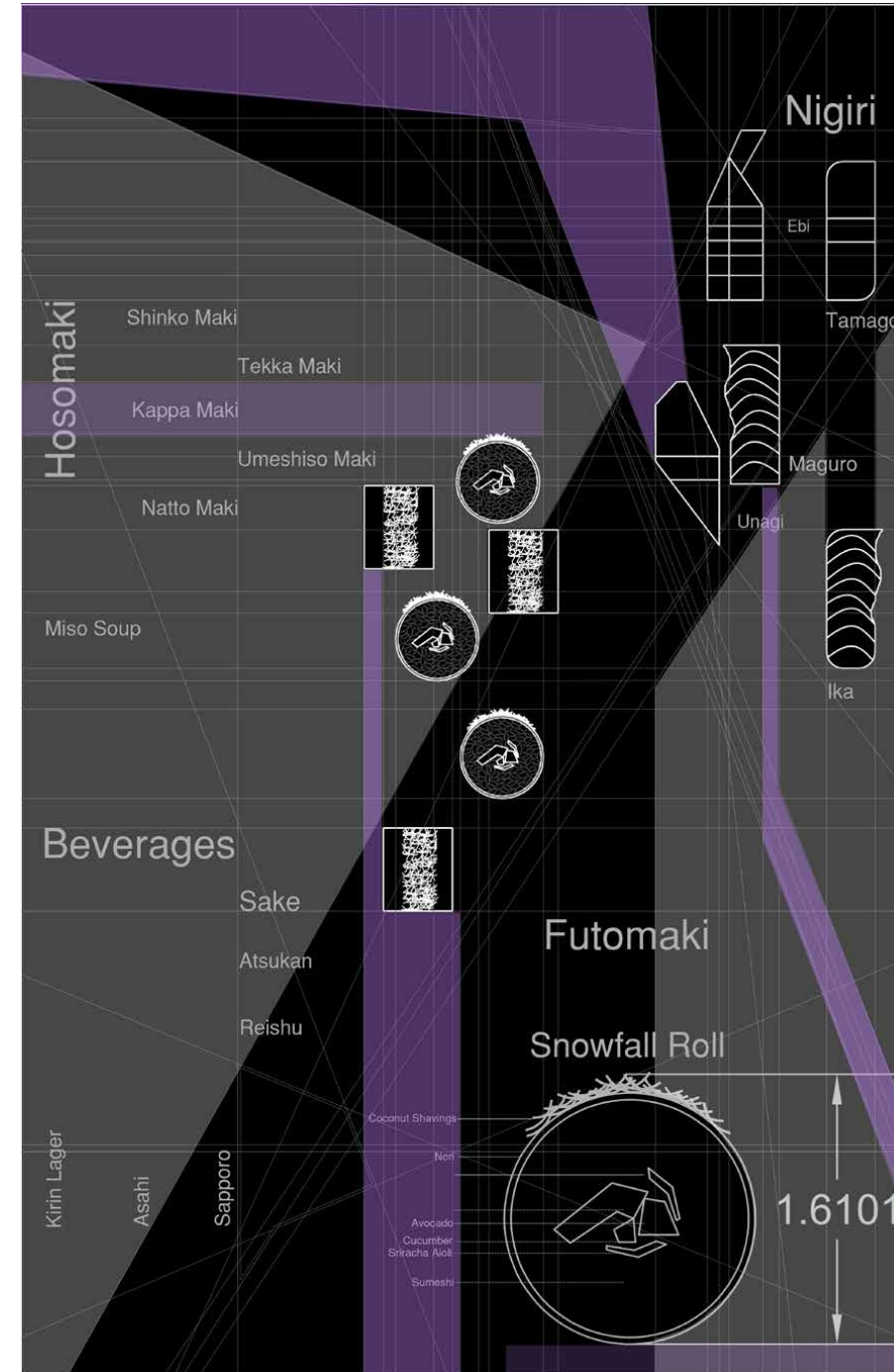
Sushizara Plating using olive wood and stainless steel for safe consumption.



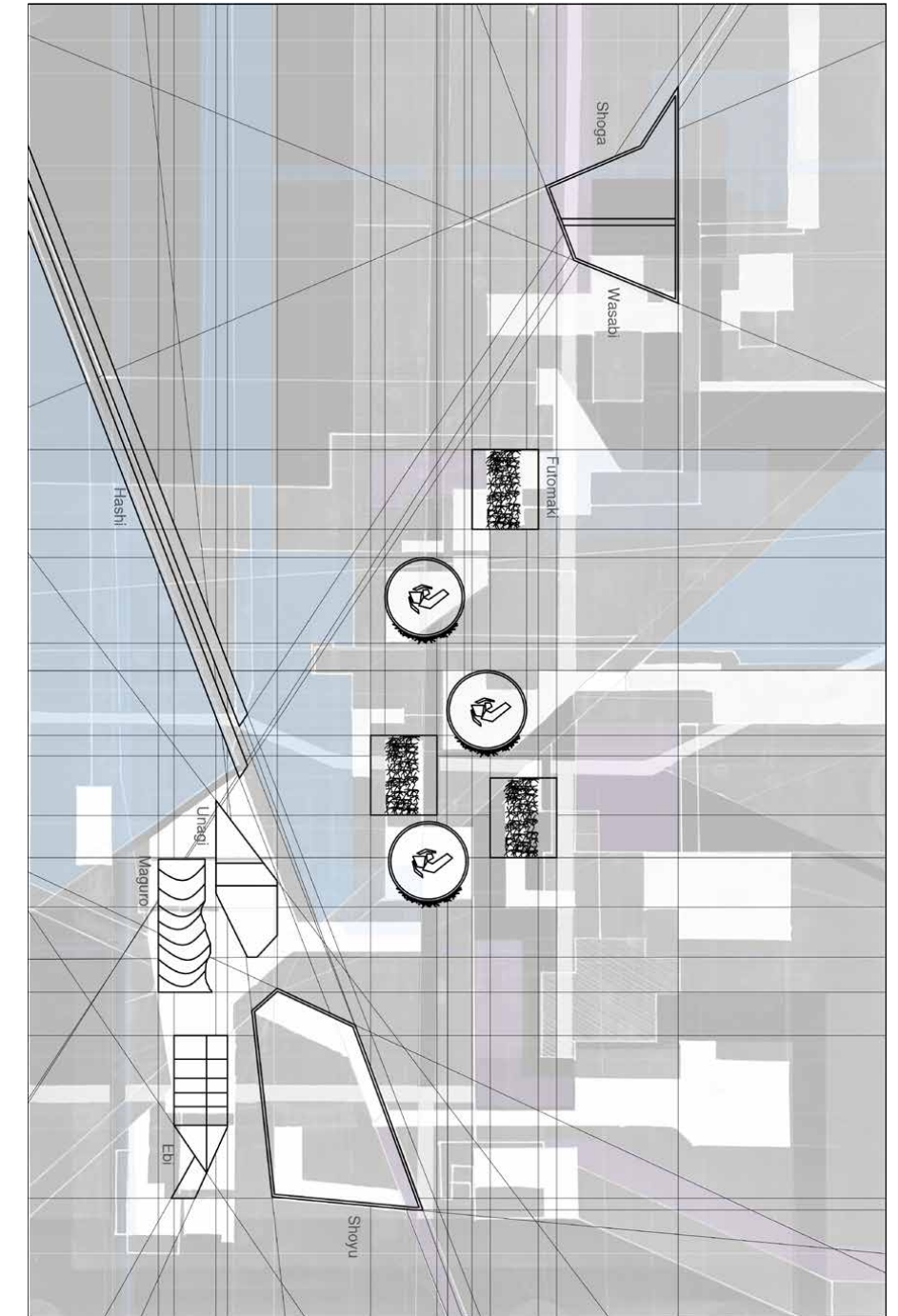
Atsuakan (hot) Sake Set



Initial Sushizara Render



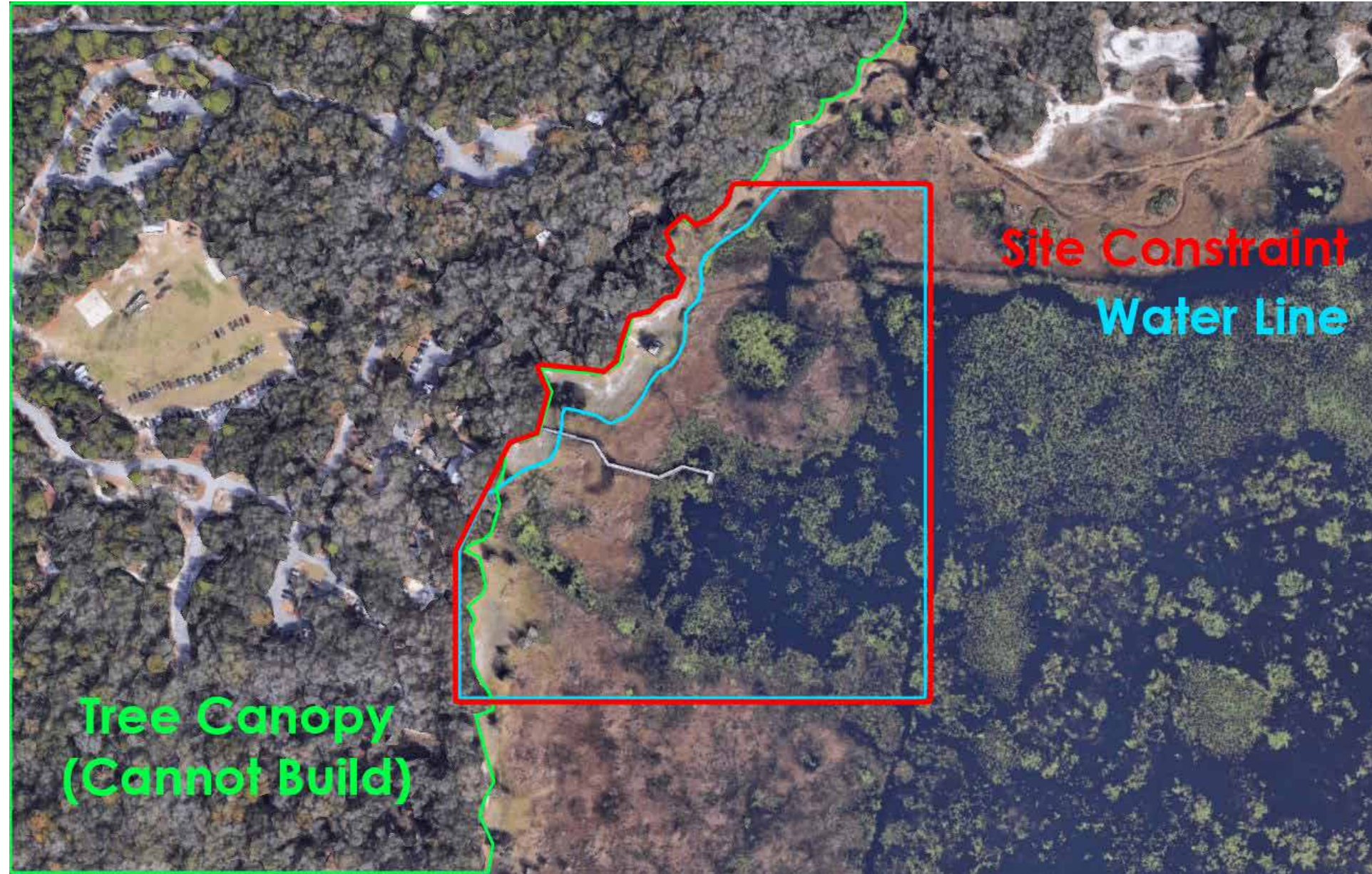
Abstract Menu Graphic



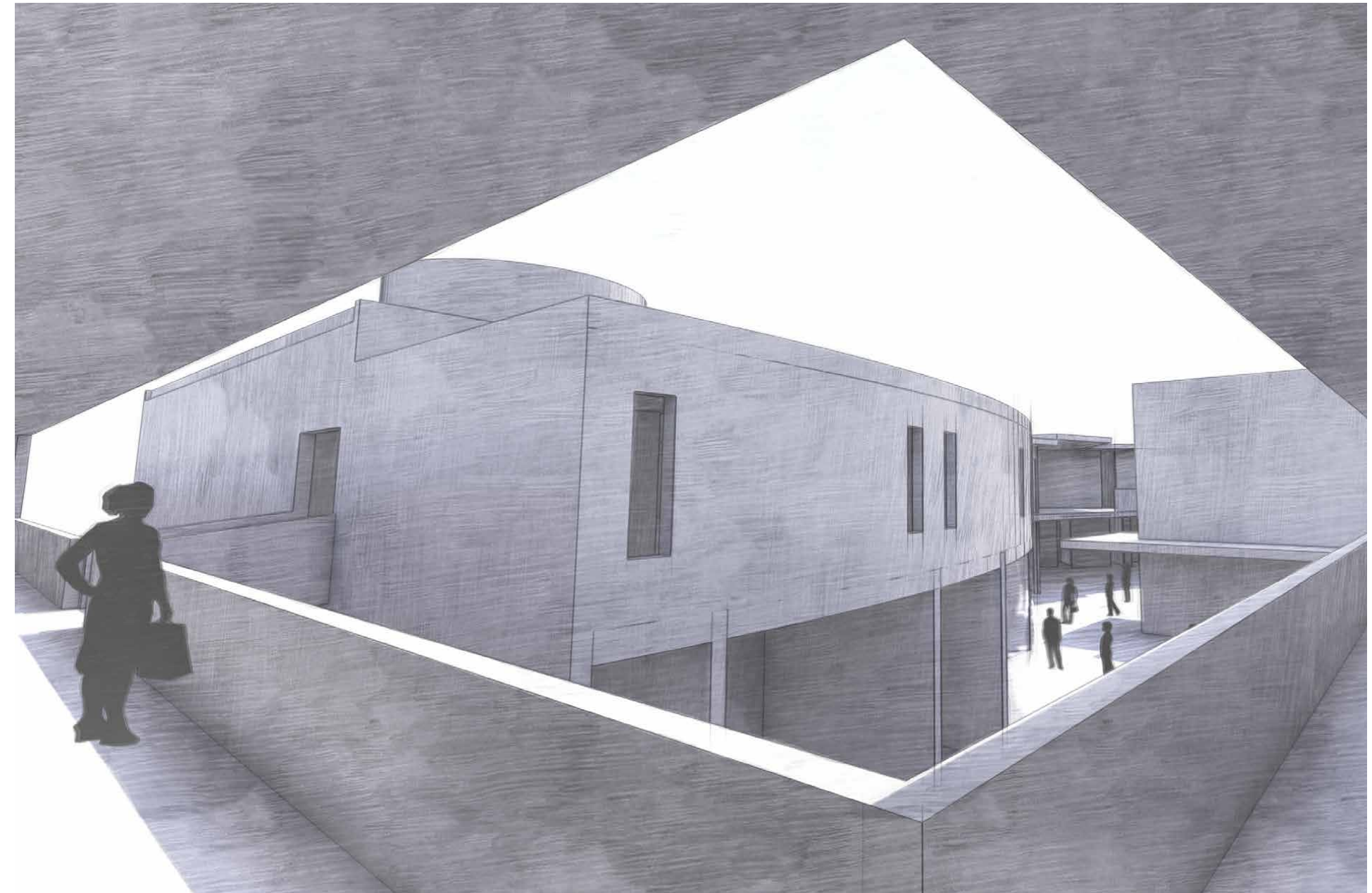
Initial Sushizara Plating Graphic

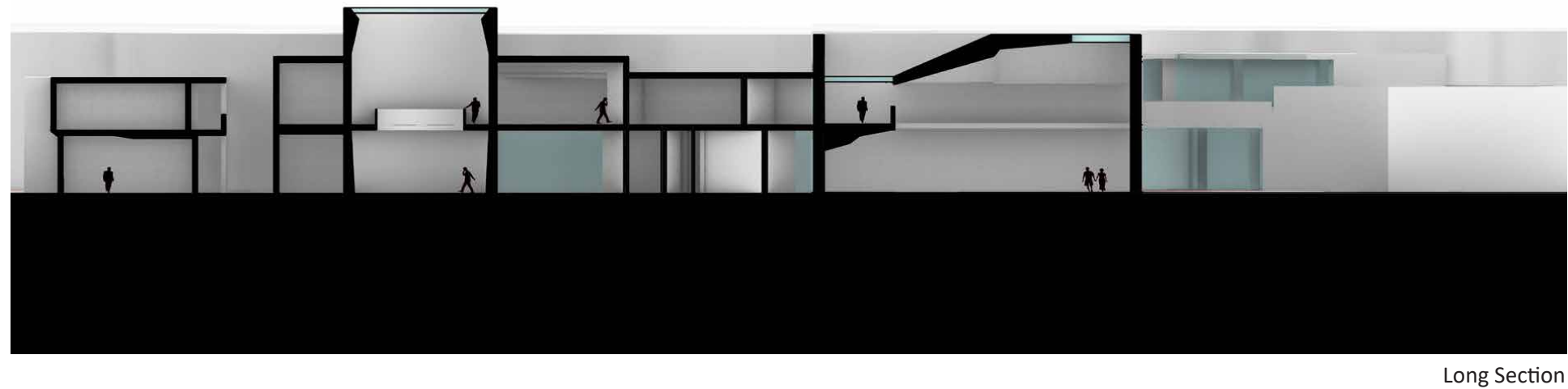
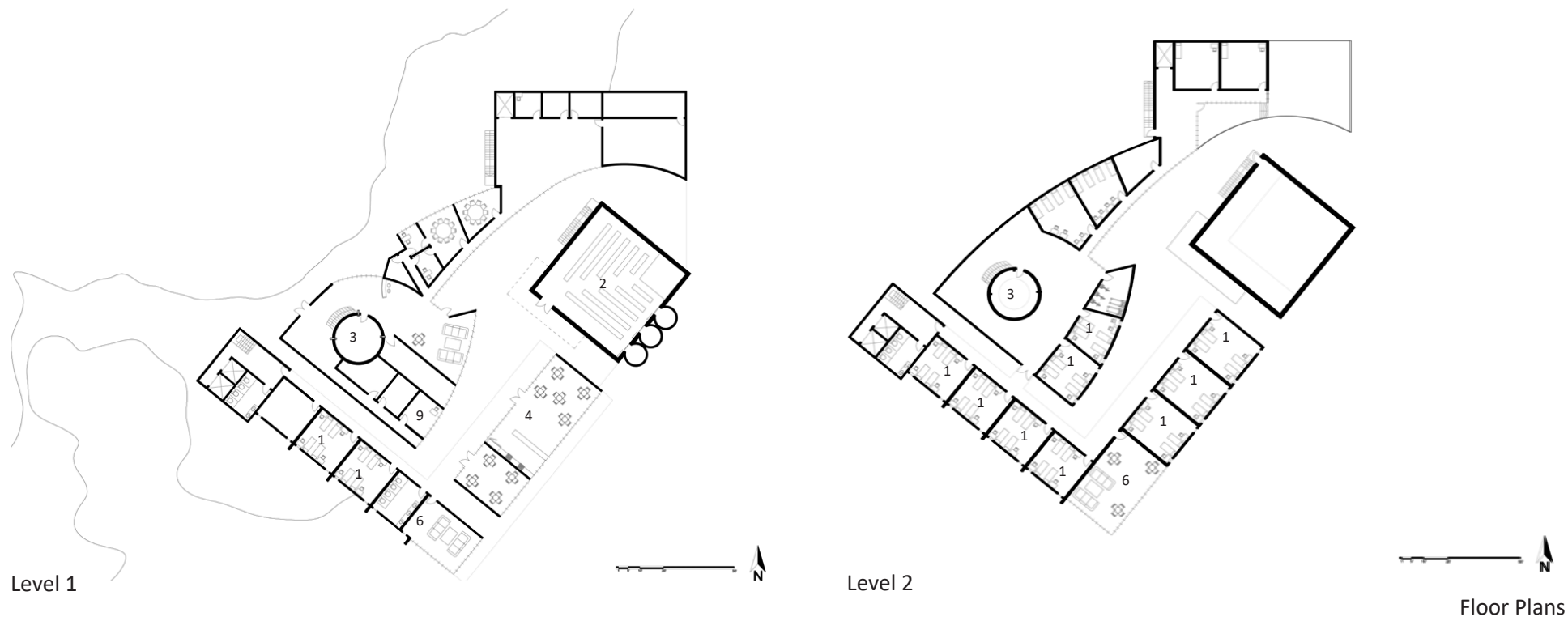
The School of Hope

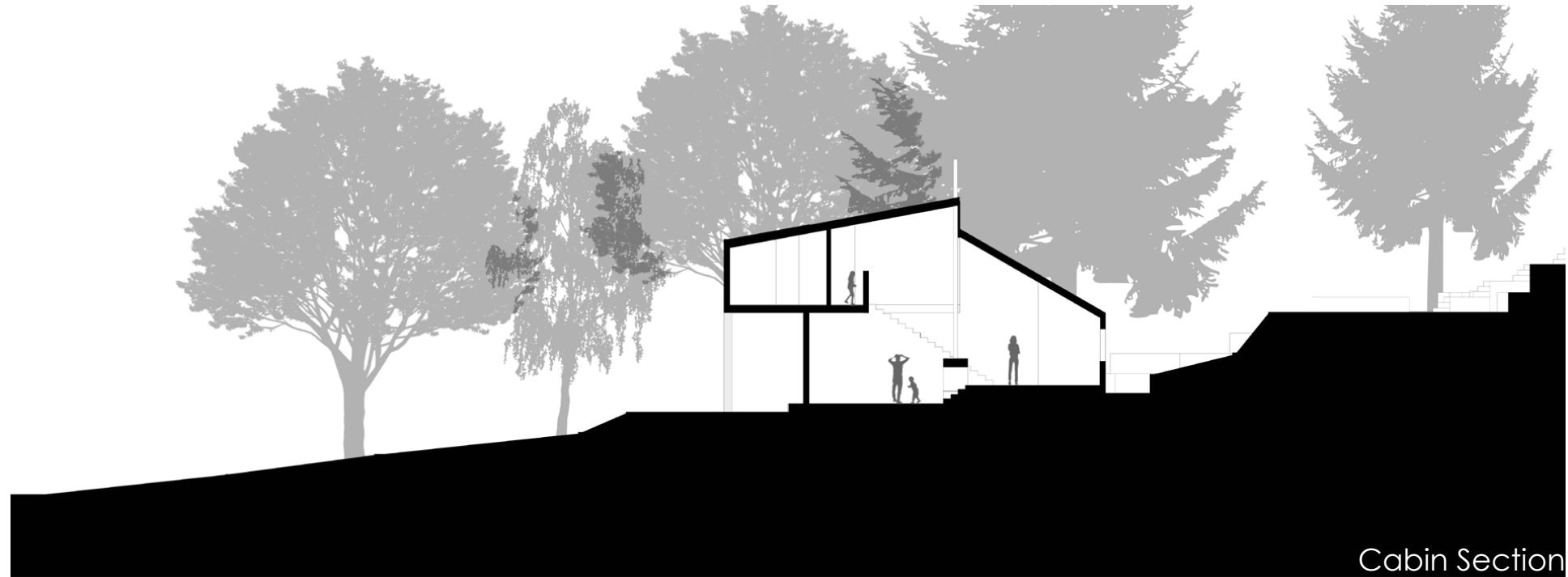
Noah Cheanvechai | Fall 2021 | Advanced Design 2 | Steve Cooke



This project was to design a “School of Hope” for those recovering from drug addictions, substance use disorders, and related mental health conditions. This is to be a safe and peaceful gender-specific community, with musical, culinary, and gardening therapies. In the residential area, I placed a large emphasis on the cylindrical reading room, since reading can be a form of therapy and healing for some people. It is lit by a large skylight and has 2 stories. There is circulation to the second floor wrapping around the reading room from the lobby area to further emphasize it’s importance. Separate from the main structure is the Sanctuary of Light. This is a space focused on utilizing light manipulation to help with the recovery process.







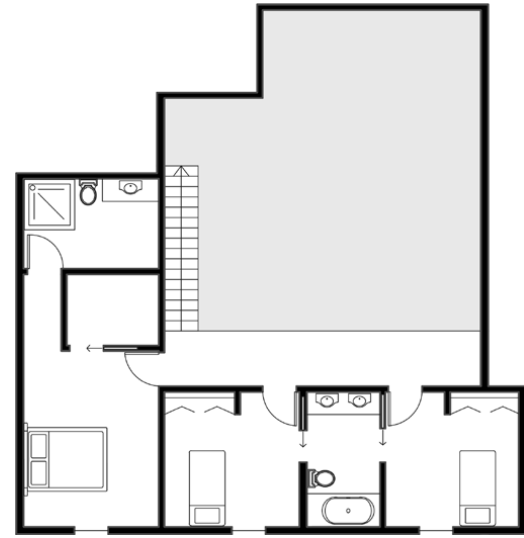
This project was to design an Ecological Research Center in Michigan. The materials used in this project are wood and stone. The challenge of this project was how to design on an inclined site with local natural materials. The program includes a lab with adjoining office space, small cabins where the researchers and their families would live, a guest lodge, a community amphitheater, and a school for local middle and high school students to learn at. To emphasize the idea of community, the overall layout is organized to encompass the amphitheater as the main gathering space.

An Ecological Science Research & Education Center for Ottawa National Park

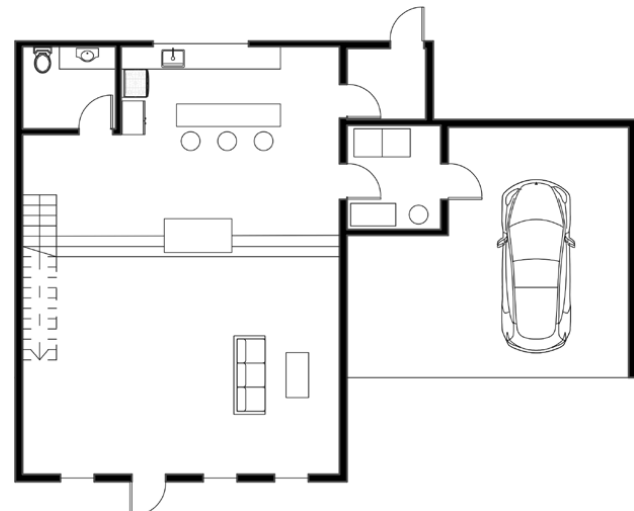
Noah Cheanvechai | Spring 2022 | Advanced Design 3 | Prof. Dan Powers



Render of Ottawa Ecological Research Center Winter



Cabin Level 2



Cabin Level 1



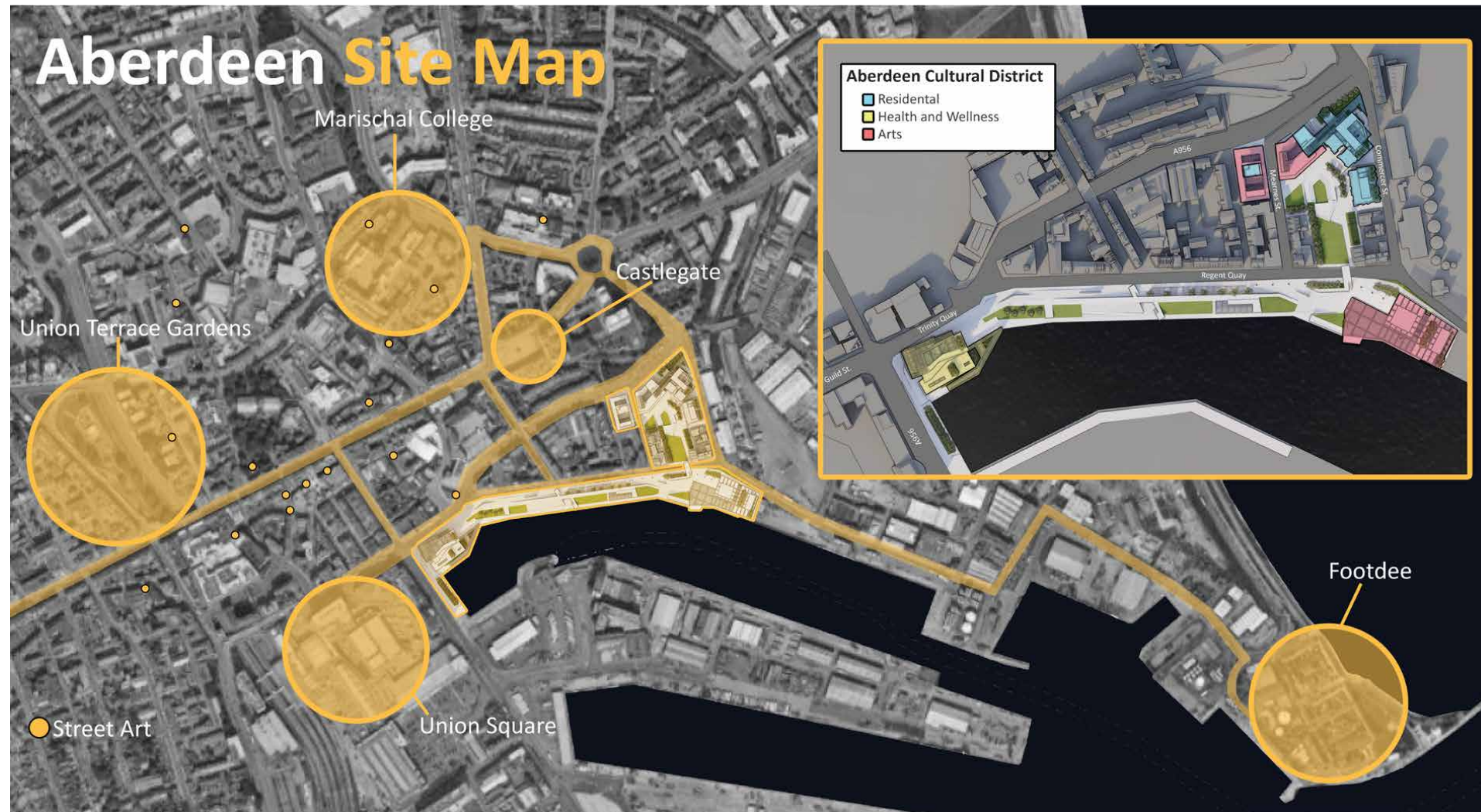
Render of Ottawa Ecological Research Center Spring



Perspective of Lodge Lounge Room



Render of Ottawa Ecological Research Center Autumn



As a team, we were tasked with redesigning the old harbor district in Aberdeen, Scotland. Aberdeen Scotland has a heavy street art culture. However, their urban fabric does not emphasize this strong aspect of their local culture. Due to this, our goal was to create a cultural district that would enhance the waterfront. Next to the train and bus station, we designed a wellness center and gym. Continuing from there, a riverwalk that leads to a new museum at the end of the harbor, meant to house local collections. Across the street from the museum is a park adjoined with creative work areas and new housing. The overall design frames the historical housing, as to not displace the residents unnecessarily, and give them more accessible amenities.





Cultural Workspace Perspective



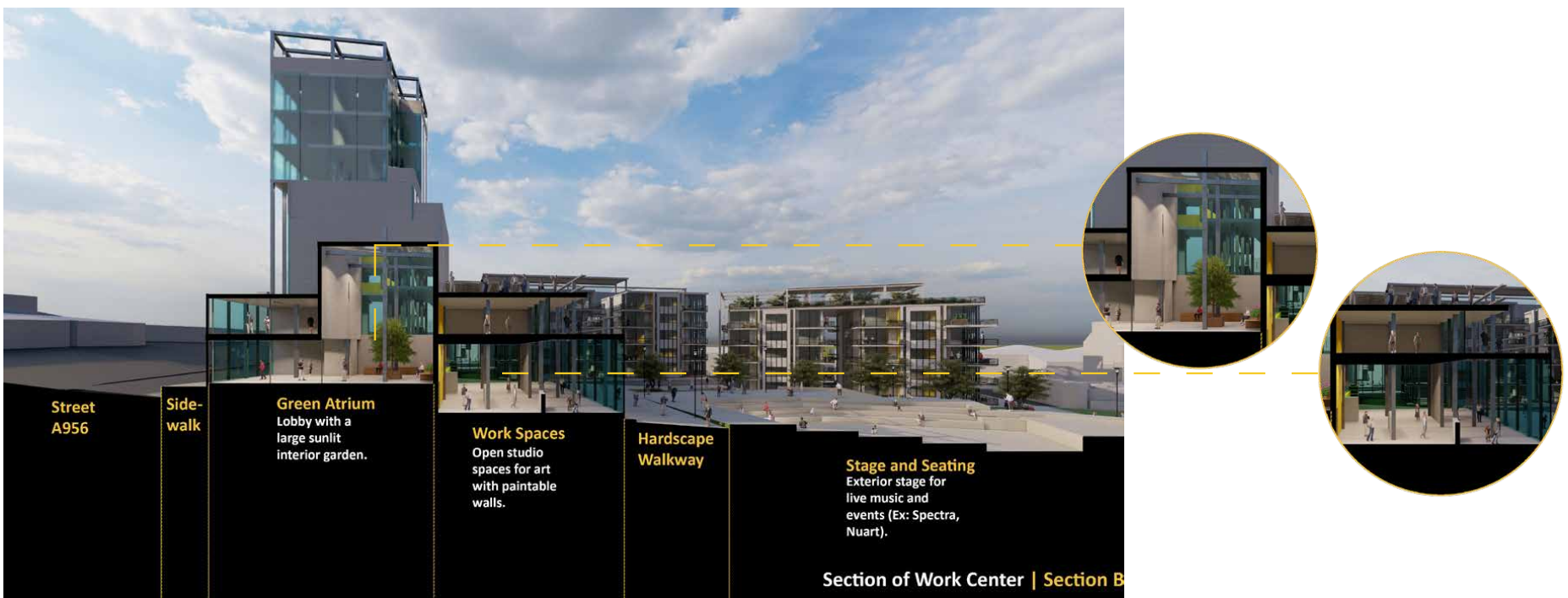
View of Plaza From Tower

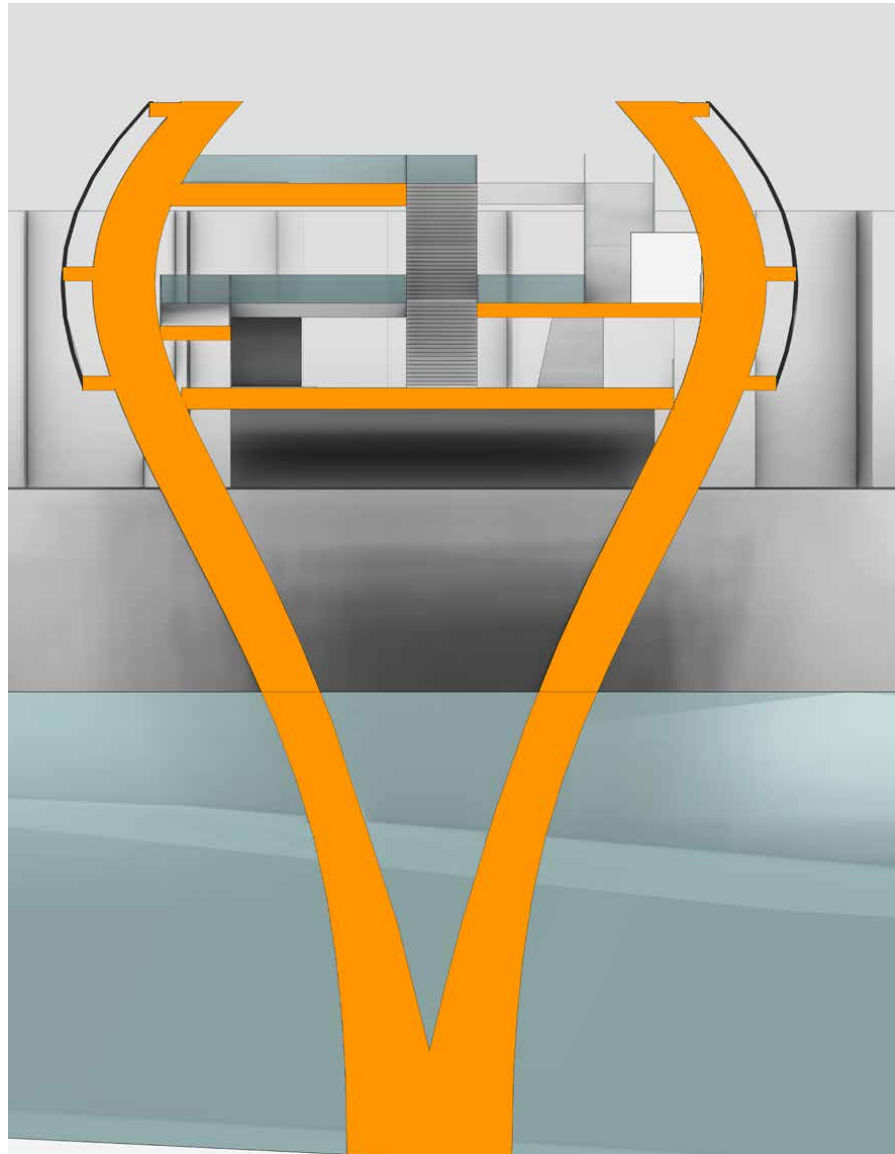


Aerial Perspective



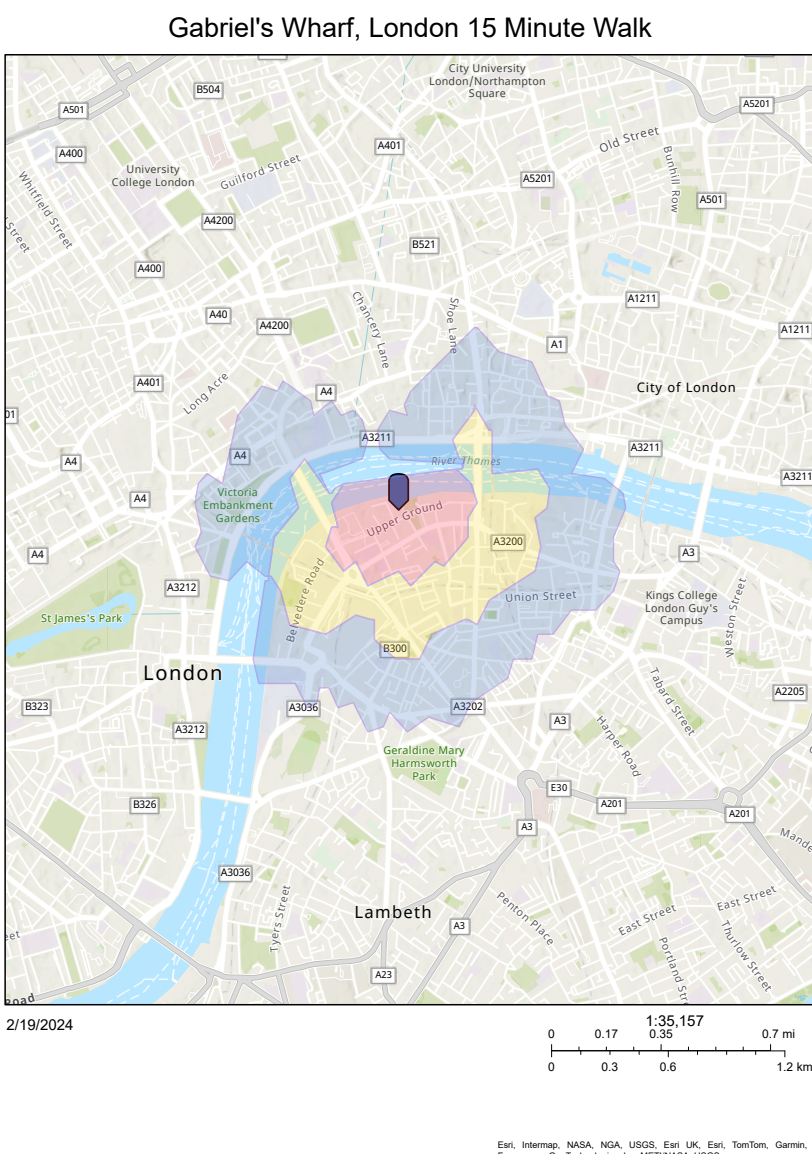
Alleys will now be painted and have ample lighting so that they become safe and usable.





Bridge Section

This intervention is a garden bridge that will cross the Thames river. The idea is to create a new connection from the Coin Street Development on the South Bank to the Inner Temple on the North Bank. This is meant to be a destination point rather than solely for pedestrian transit, intending to sponsor social interaction with the Coin Street residents and the law students studying at the Inner Temple. Starting at the South Bank at Gabriel's Wharf, it ramps up into a multi storied temporary retail section that will augment the existing context and contain seating and viewing areas. As the bridge continues north, a walkable open garden space takes form in the center. This will contain walking paths flanked by trees flowers and stones. Seating will be placed on the green space to encourage pedestrians to leave the walkways and experience the greenery beyond them. The final section, connecting to the North Bank, will be a blend of small kiosk retail spaces and rentable outdoor artistic/performative spaces, that will also continue the green lawn from the garden section of the bridge.



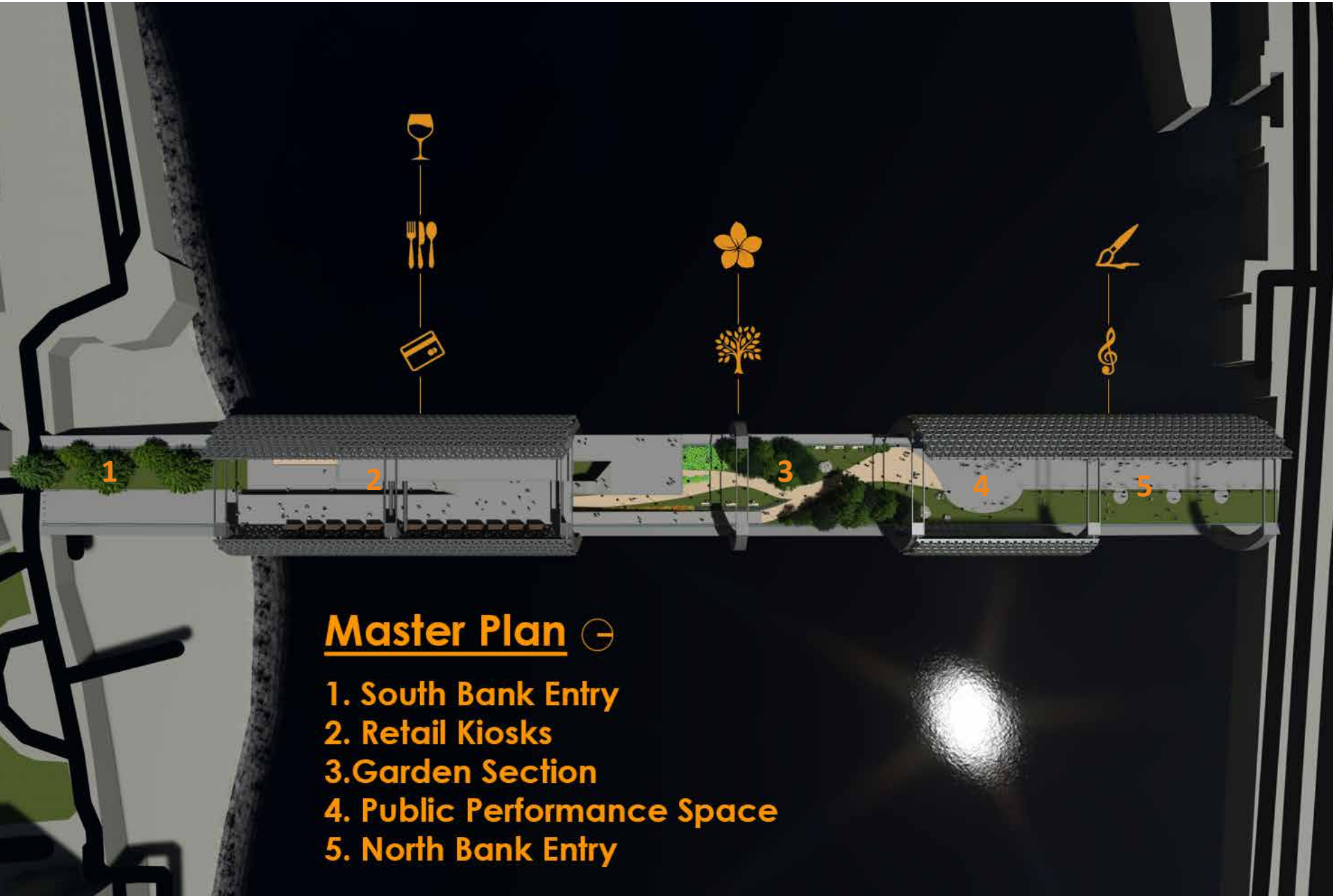
2/19/2024

0 0.17 0.35 0.7 mi
0 0.3 0.6 1.2 km

Esri, Intermap, NASA, NGA, USGS, Esri UK, Esri, TomTom, Garmin, Foursquare, GeoTechnologies, Inc, METI/NASA, USGS

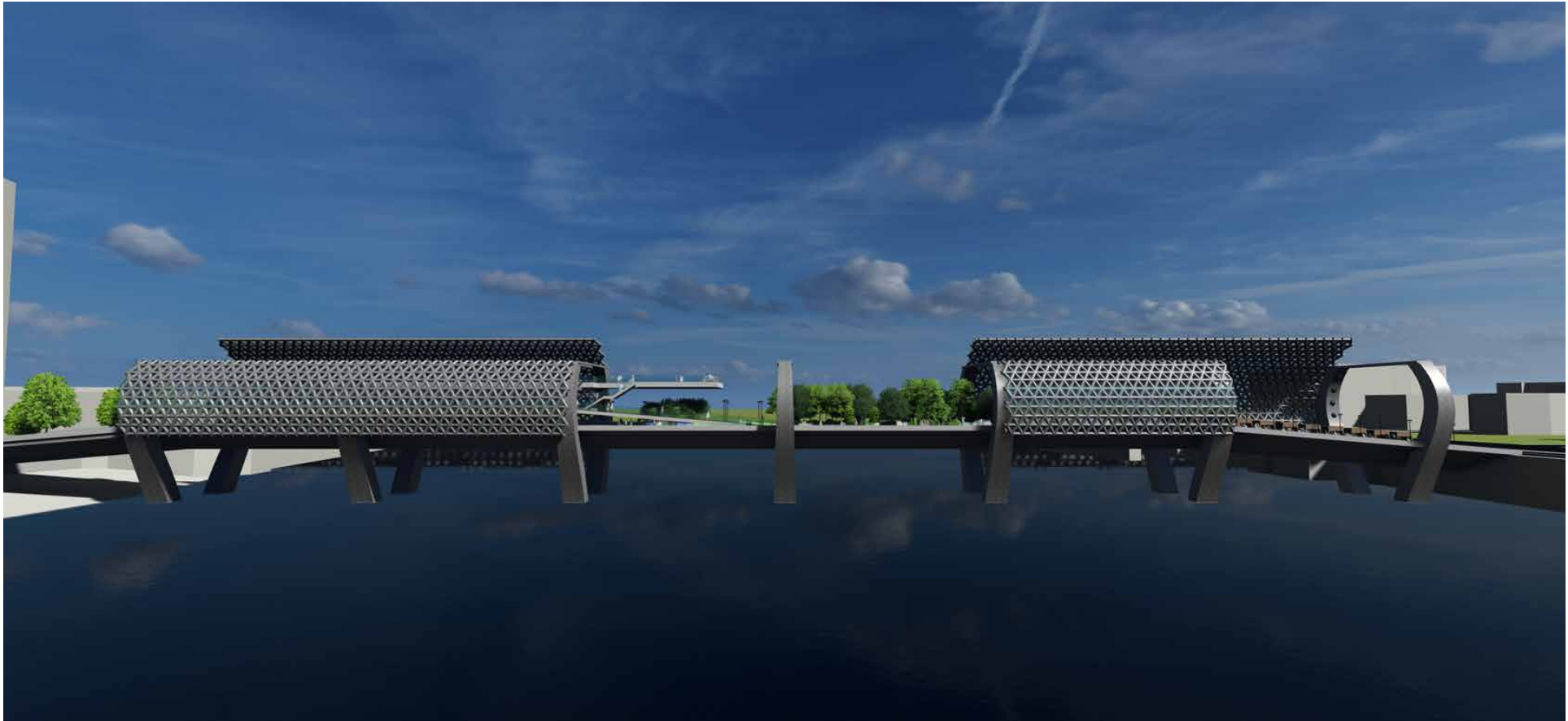
Thames Garden Bridge

Noah Cheanvechai | Fall 2023 | Urban Community Design | Prof. Josue Robles



Master Plan

1. South Bank Entry
2. Retail Kiosks
3. Garden Section
4. Public Performance Space
5. North Bank Entry



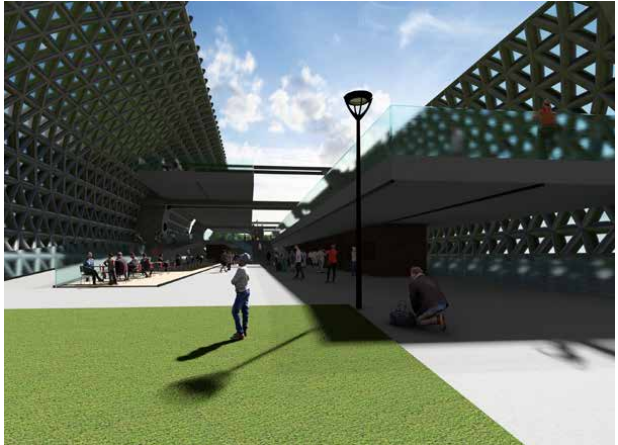
Elevation



North Bank Entrance Perspective



Garden Walk Perspective Looking North



South Bank Commerce Perspective



Garden Walk (Night) Perspective

