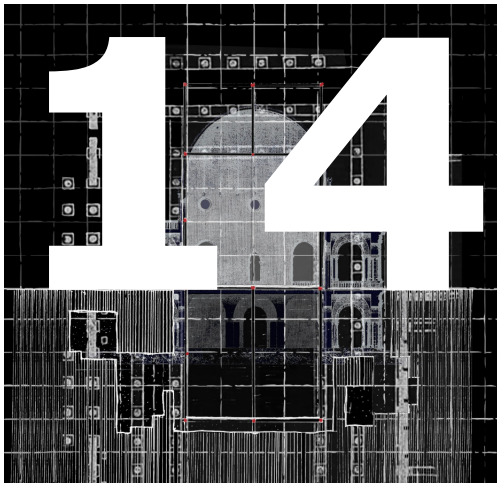






## **THRESHOLD to EDEN**

Folly | Peter Waldman | Clifton, VA | Spring 2024



## **BASILICA PHILADELPHIA**

Meeting House | WG Clark | Philadelphia, PA | Fall 2023





# CHIAROSCURO

Environmental Learning Center | ARCH 3020 | Spring 2023



# CONSTRUCTED VOID

Hacker Lab | New York City, NY | Lucia Phinney | Fall 2022



# in PERSPECTIVE

Study Abroad | Luis Pancorbo & Ines Robles | Summer 2022

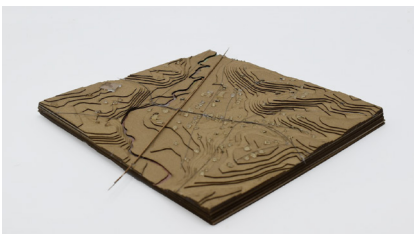




## MONUMENTALIZING the THRESHOLD BETWEEN TOWN and FOREST

The place where I have chosen to do so is a meadow outside my hometown that I loved. What I admired about it was that it felt like the edge of the world—on one side, the path led into the town, and on the other side, it dissolved into nature. This project monumentalizes and pays respect to this edge.





VIEW OF THE TOWN OF CLIFTON AND SURROUNDING AREA

Clifton (left) is a historic railroad town from the 19th century. The Kincheloe fields (above) are a series of meadows on the edge of the town.

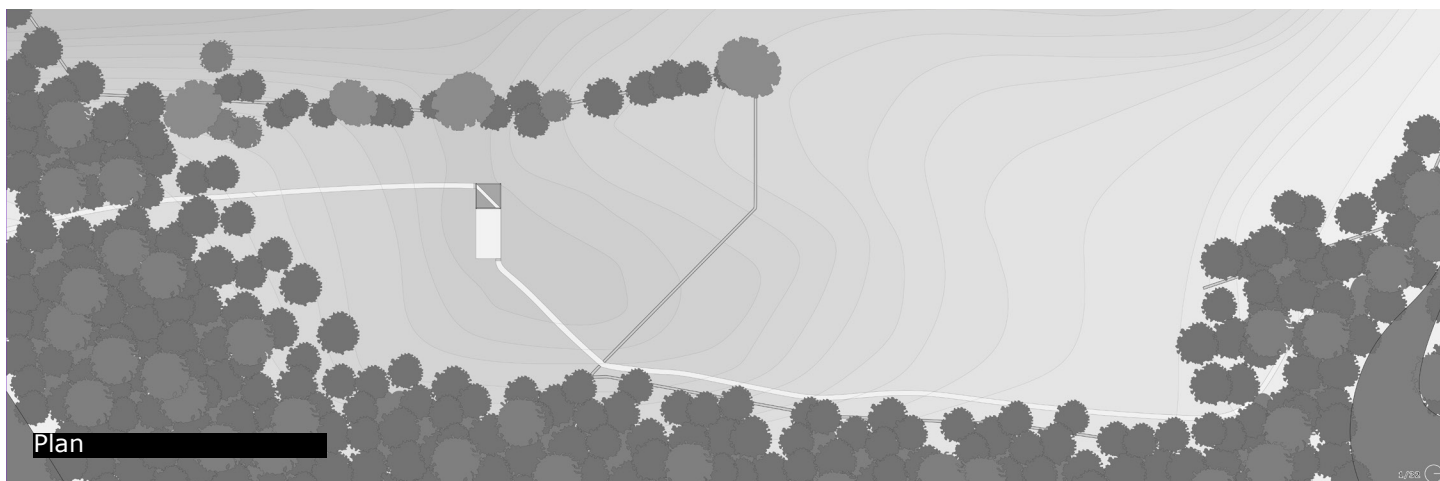


Map of Clifton



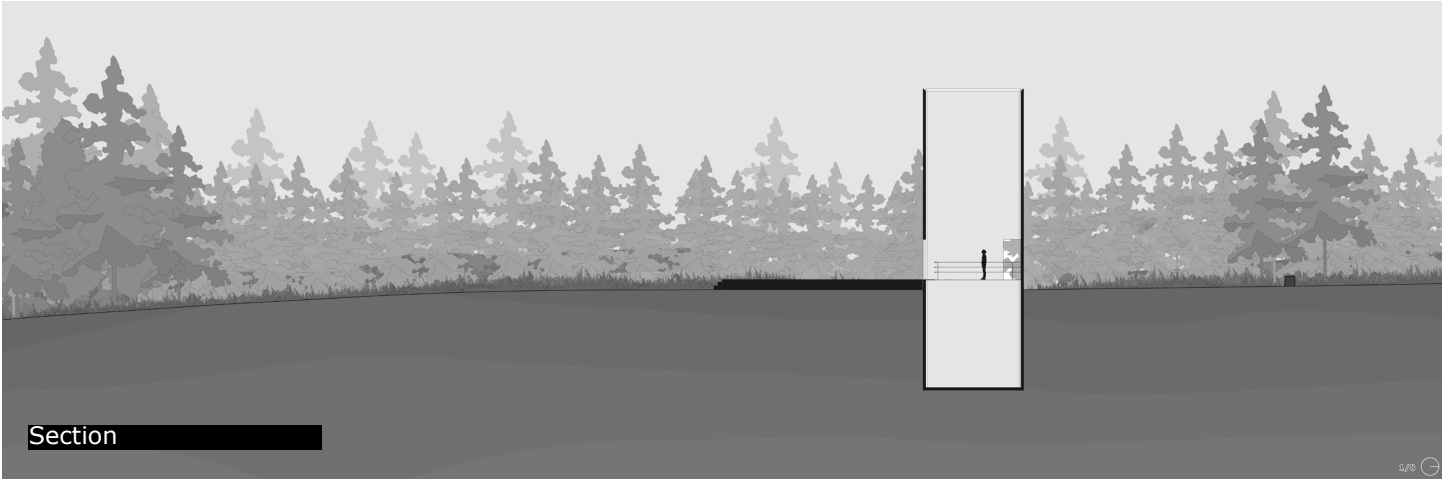


Map of Site

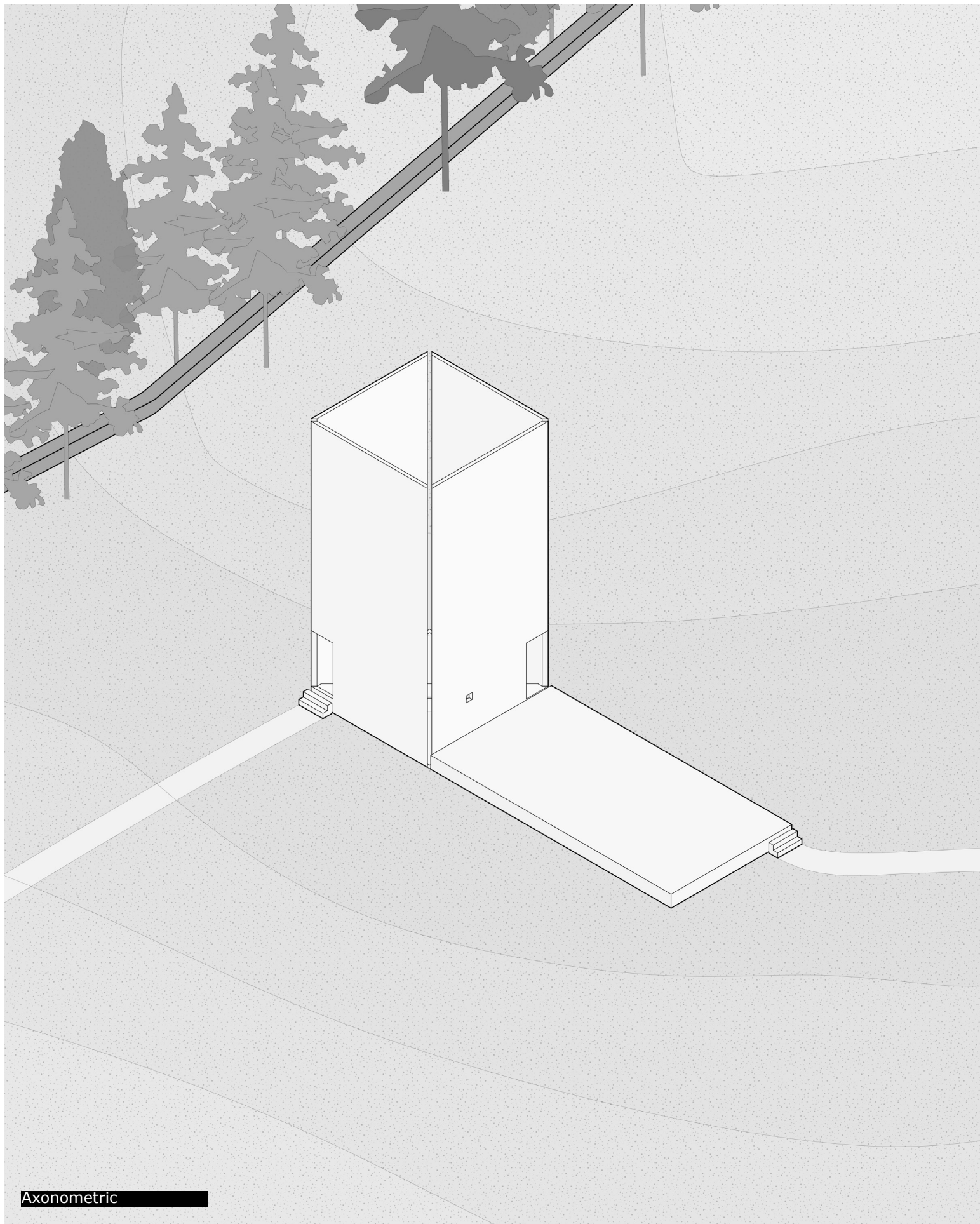


## A FOLLY ON THE EDGE

Placing the folly on the edge of the meadow creates a totem or gate, which draws you to it, but ultimately directs you outside of itself through its form.

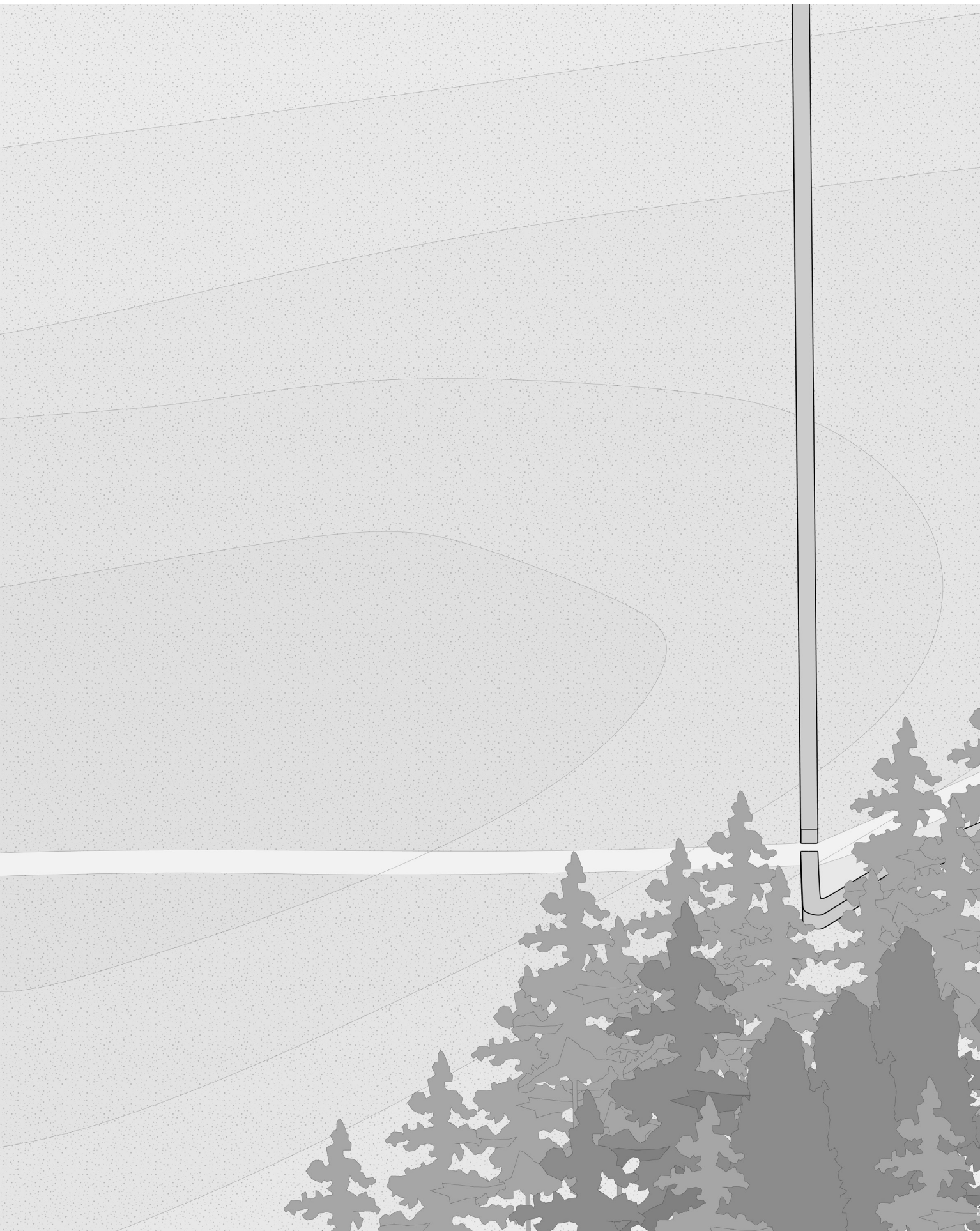






Axonometric







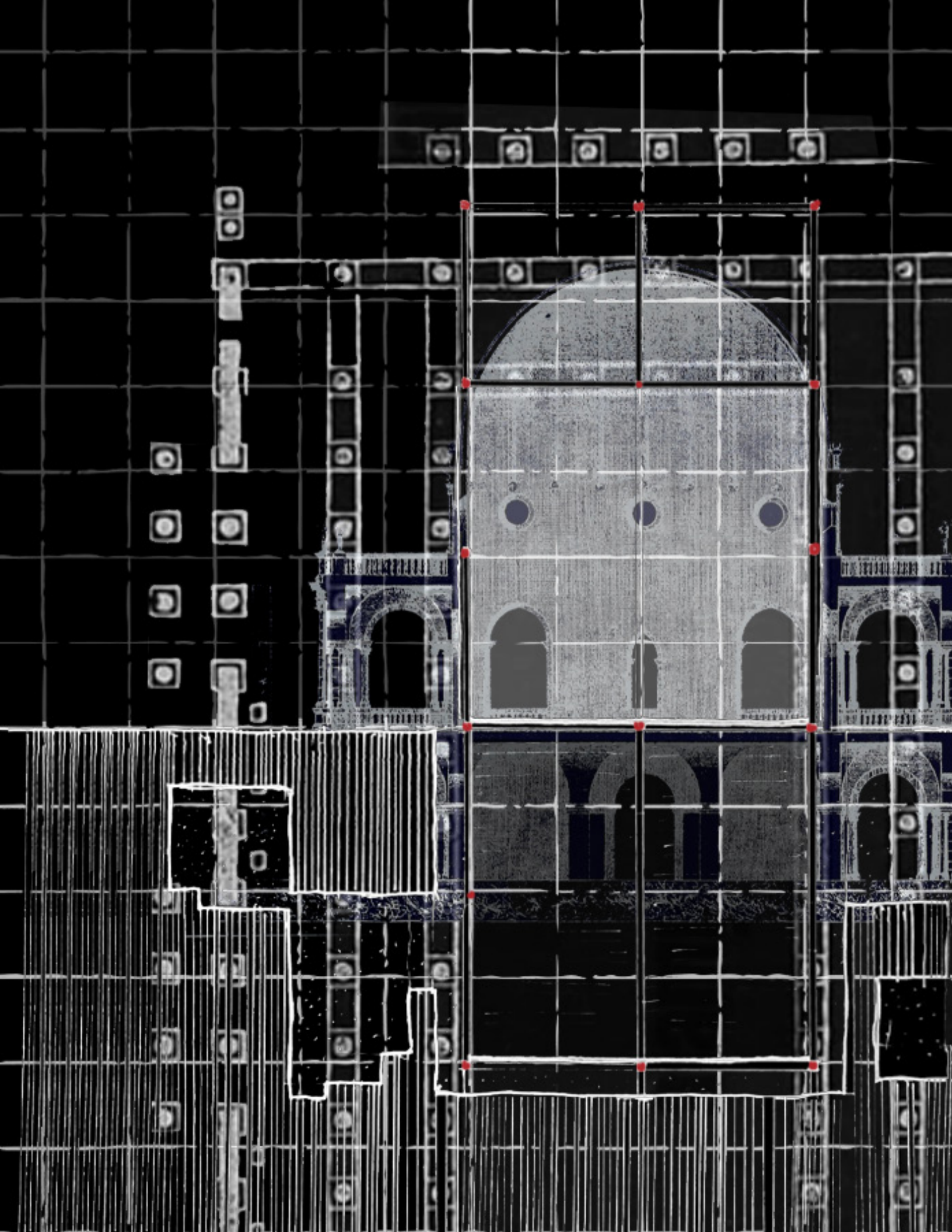


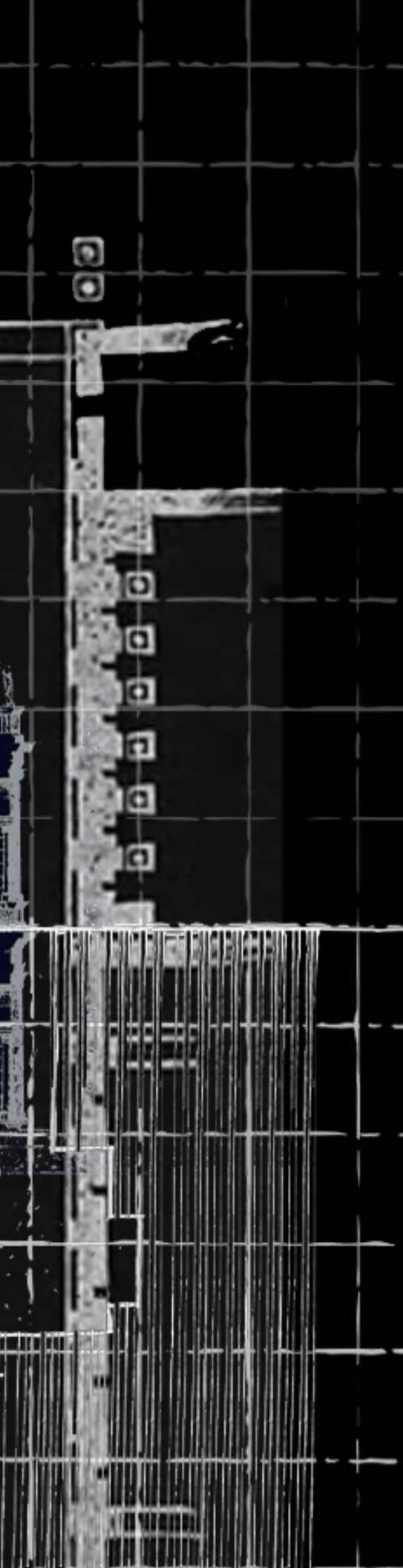
VIEW OF APPROACH FROM TOWN











# BASILICA PHILADELPHIA

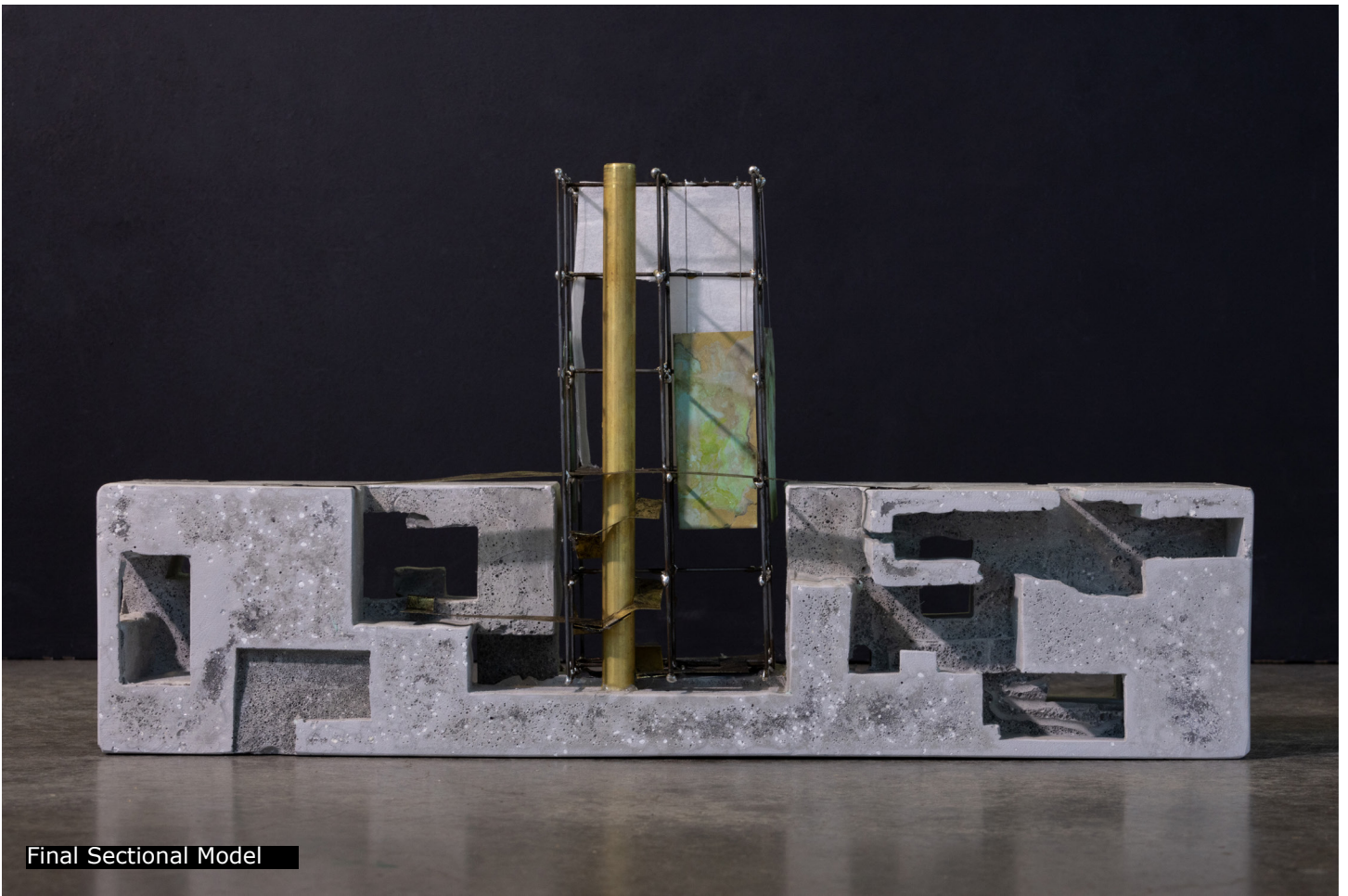
Meeting House | WG Clark | Philadelphia, PA | Fall 2023

## DECONSTRUCTING the BASILICA

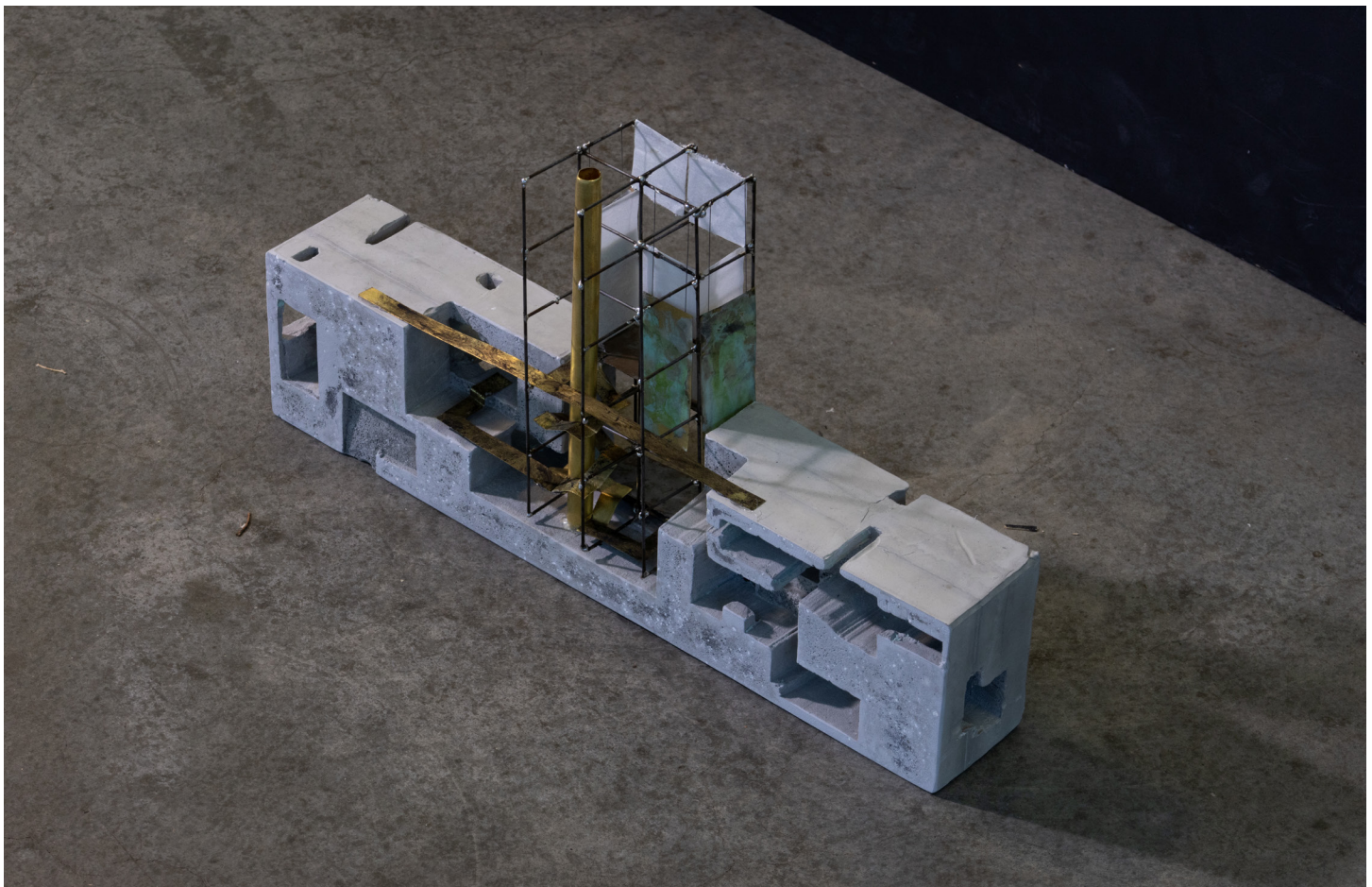
William Penn's plan for Philadelphia was an attempt to create an ideal city which connected Pennsylvania to the world, river to river, and land to industry. This project flips these ideals into the section to connect earth to atmosphere, dark to light, unchanging to changing - thus creating a series of ideal spaces for community to gather in the many forms it does. Below ground are darker spaces at a variety of scales to host gatherings ranging from a meeting between friends seeking a haven to a school play about Hades. Above ground, the stitch creates a large gathering space with movable panels for a variation of events, along with sectioning off two piazzas - one open and one enclosed.

This project is heavily informed by the Palladian Basilica in Vicenza which is a structure inserted into a gap in the urban fabric, creating two different piazzas for different usages. It is program-less and simply creates different spaces at different scales for the city to use for whatever it needs.

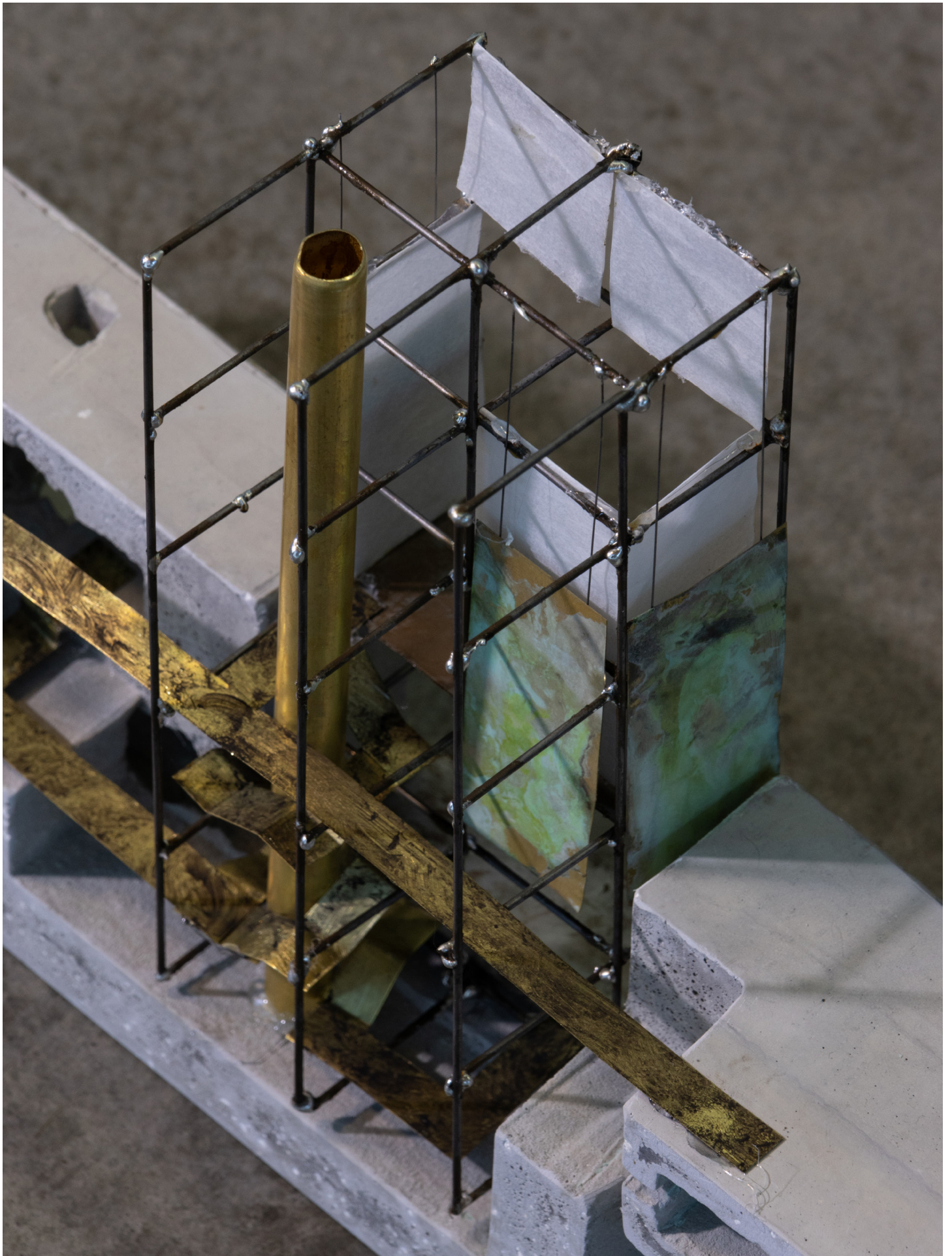


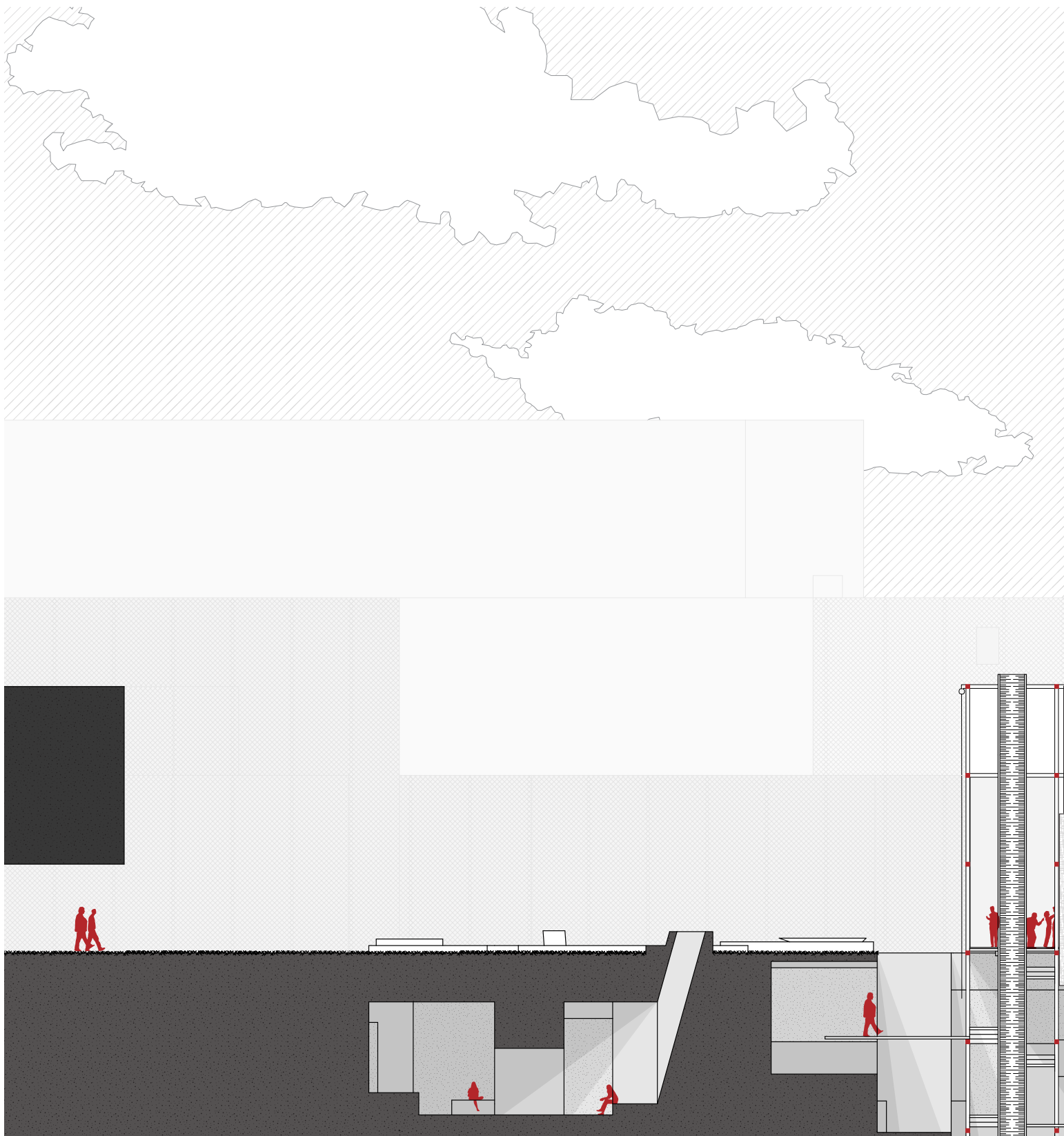


Final Sectional Model







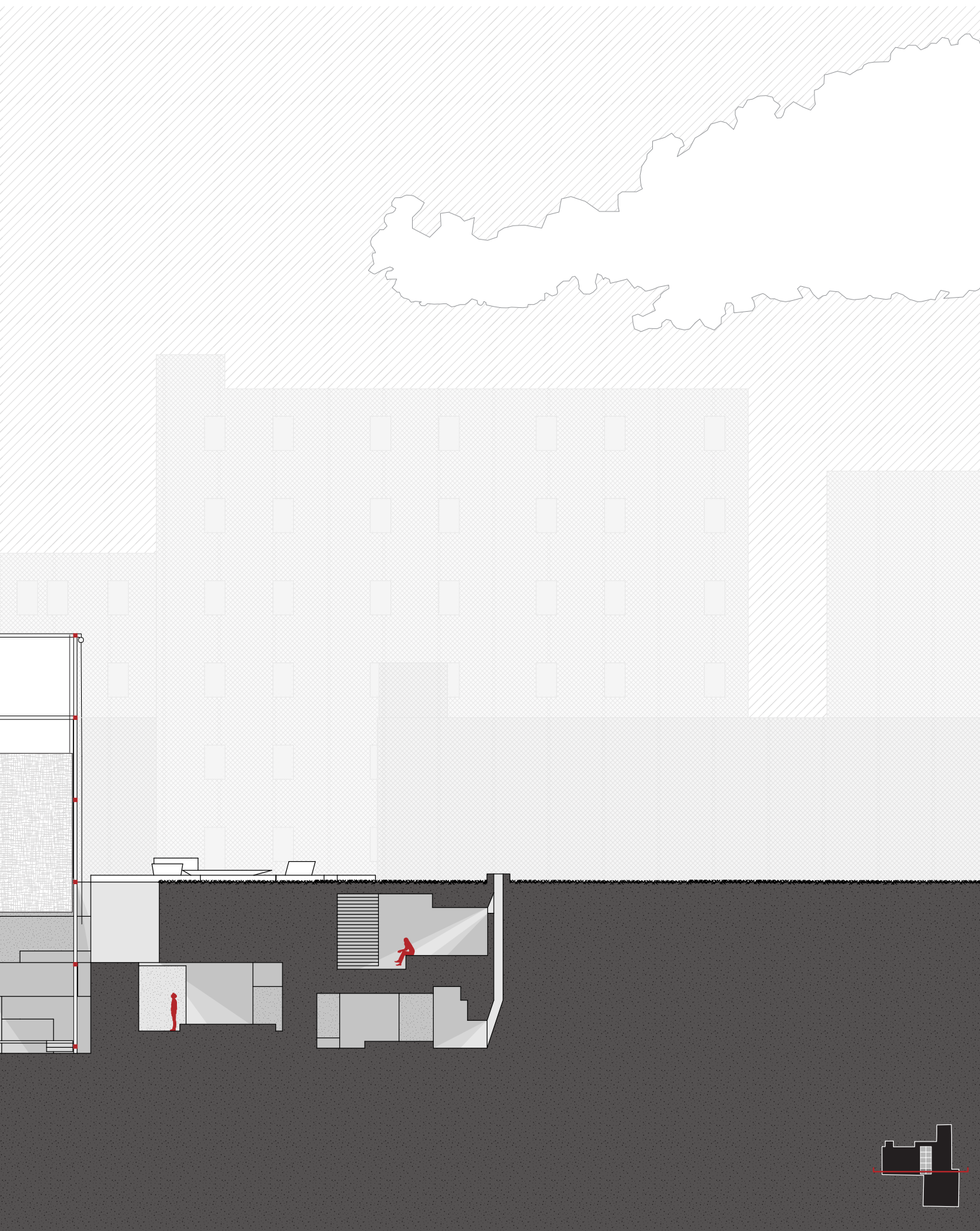


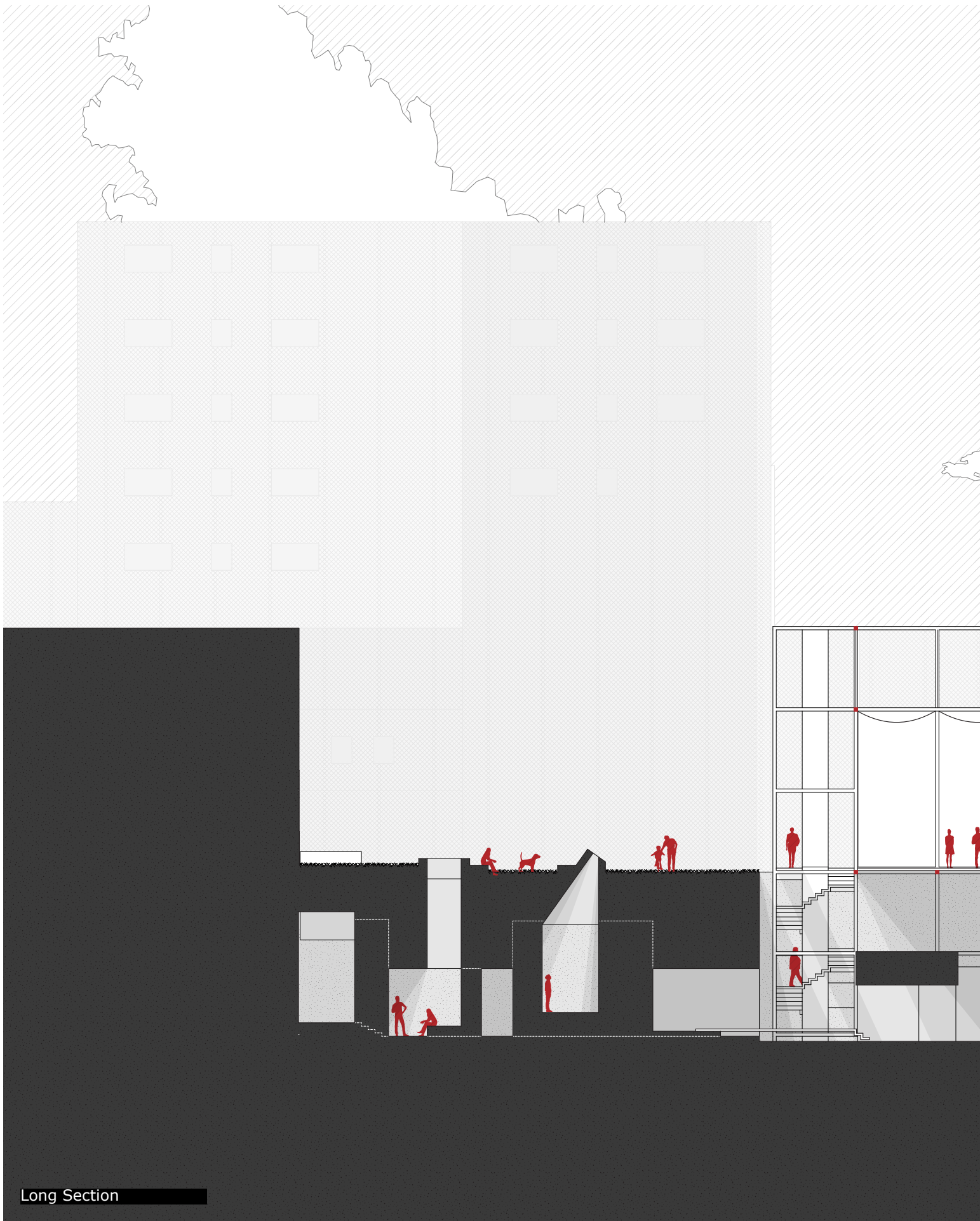
### Short Section

#### CREATING TWO PIAZZAS

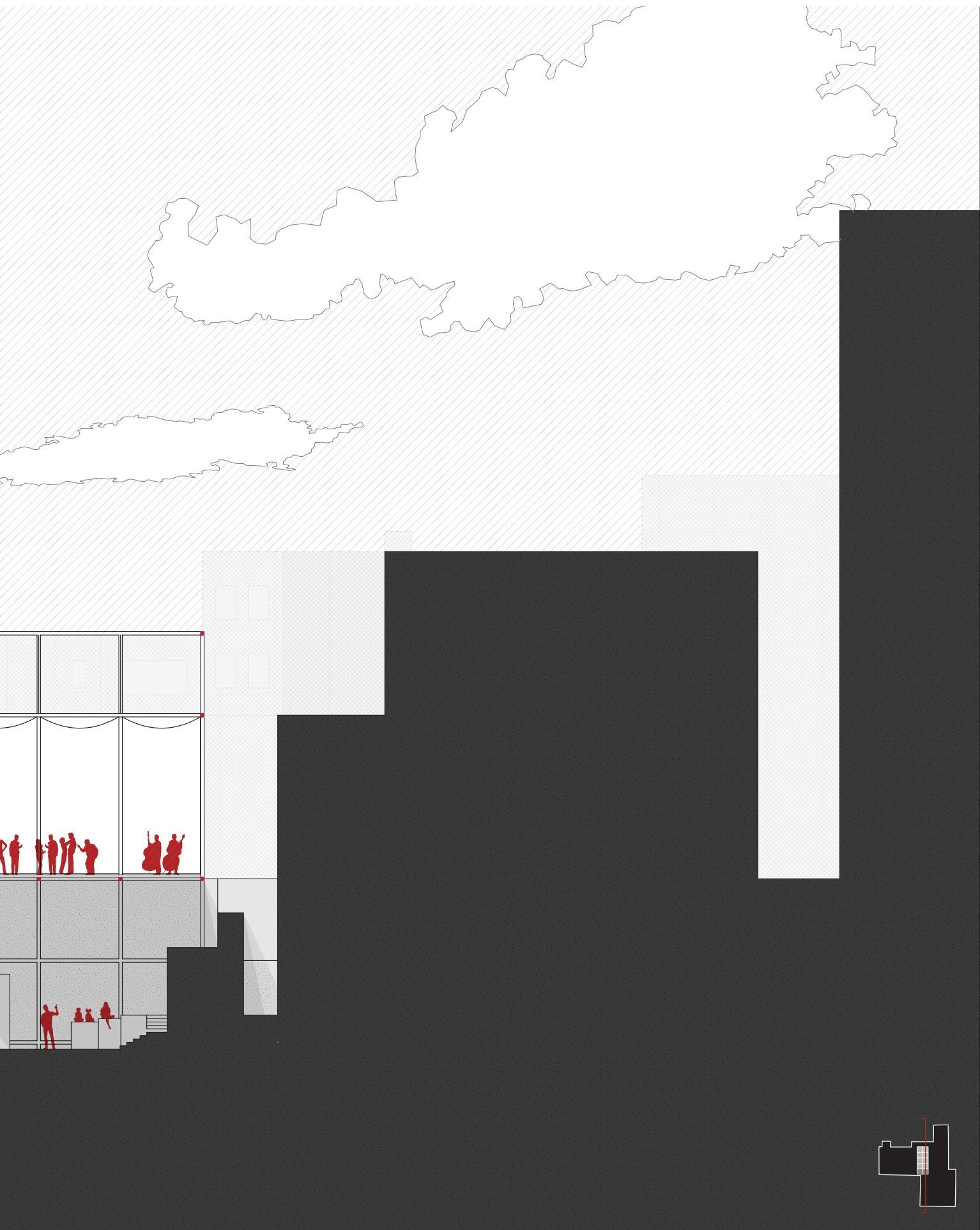
Similar to the Palladian Basilica, the structure is placed in a manner that creates an open and an enclosed piazza, connected by a tower.

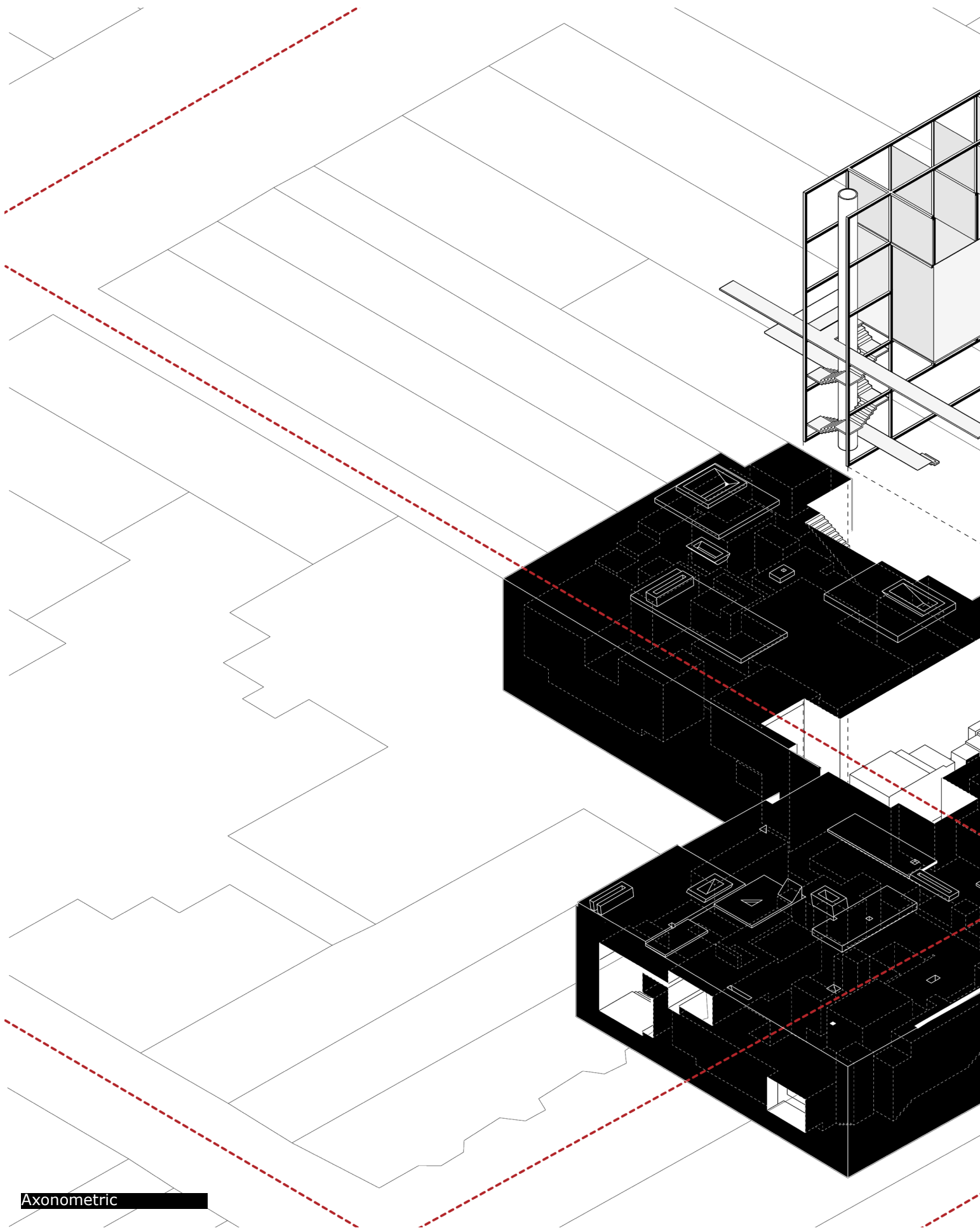




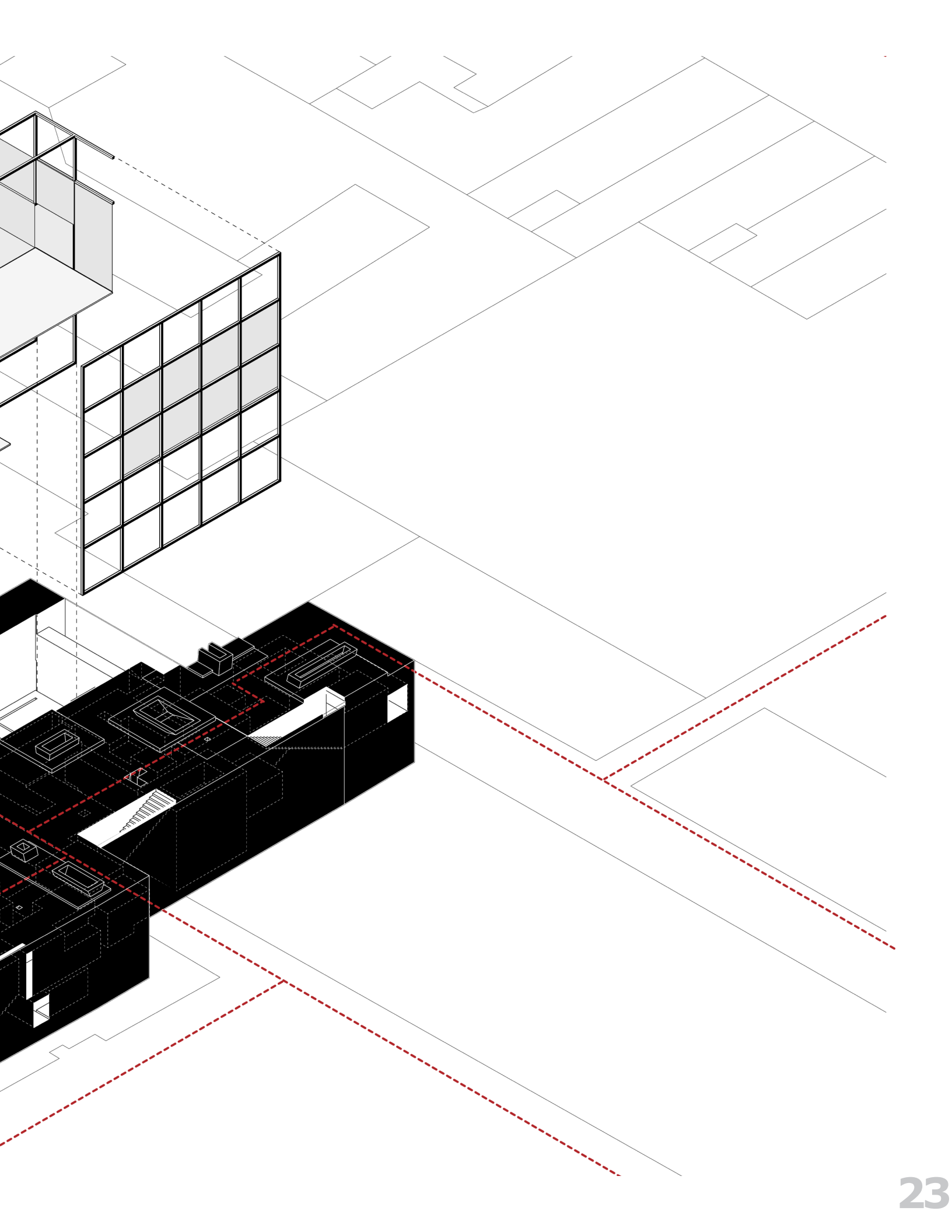


Long Section





Axonometric



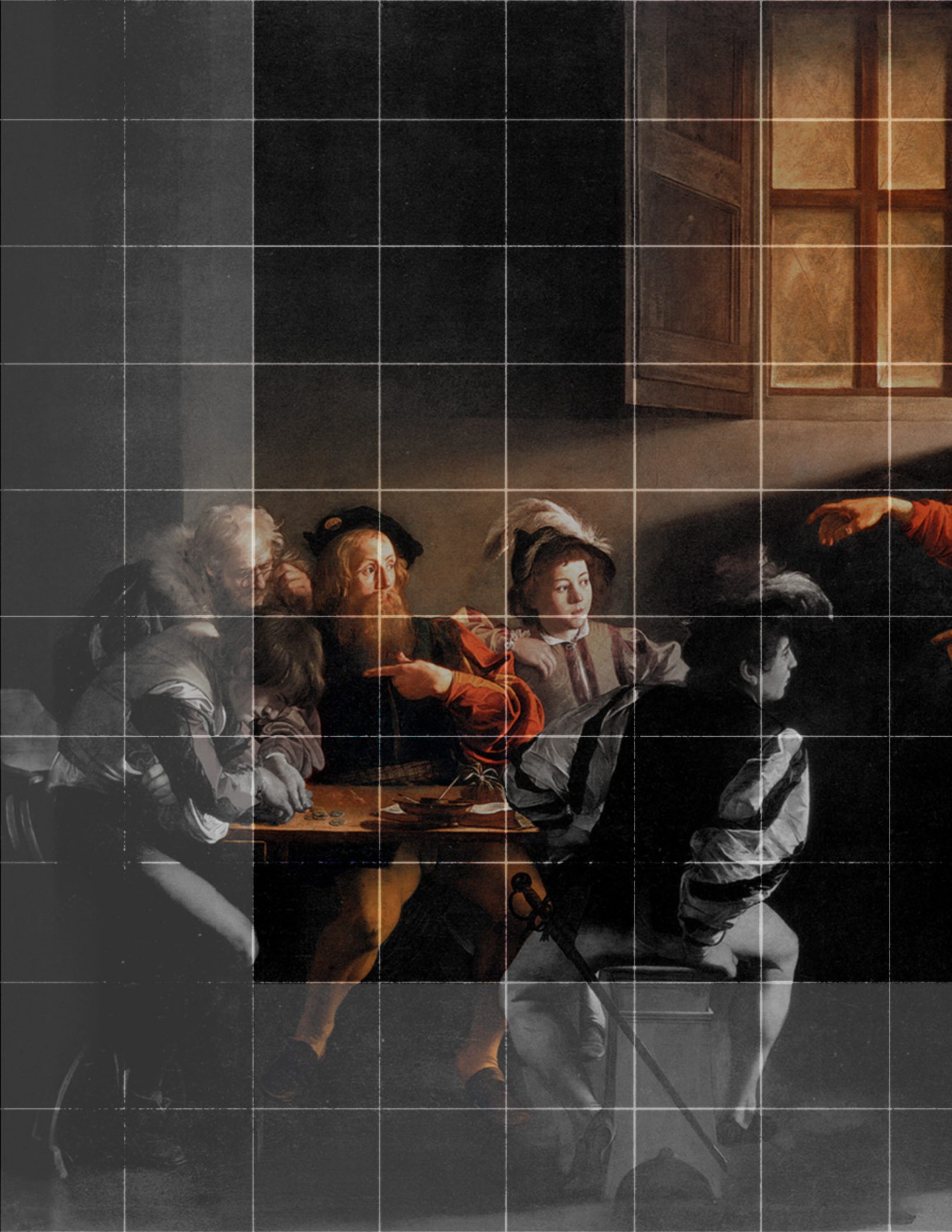


Ground Floorplan



Underground Floorplan









# CHIAROSCURO

Environmental Learning Center | ARCH 3010 | Spring 2023

## SCHOOL as the POINT BETWEEN the KNOWN and UNKNOWN

This project is guided by the philosophy that learning occurs at the intersection between the known and unknown, safe and unsafe, wall and field. It evokes the image of someone in the portico of Villa Rotunda gazing out upon the field, or Newton sitting under the shade of an apple tree. Within this framework, various forms of learning can take place—whether it involves engaging, soul-enriching experiences like 'The Calling of St. Matthew' by Caravaggio, or more contemplative moments akin to 'Lady in Pink' by Edward Hopper.

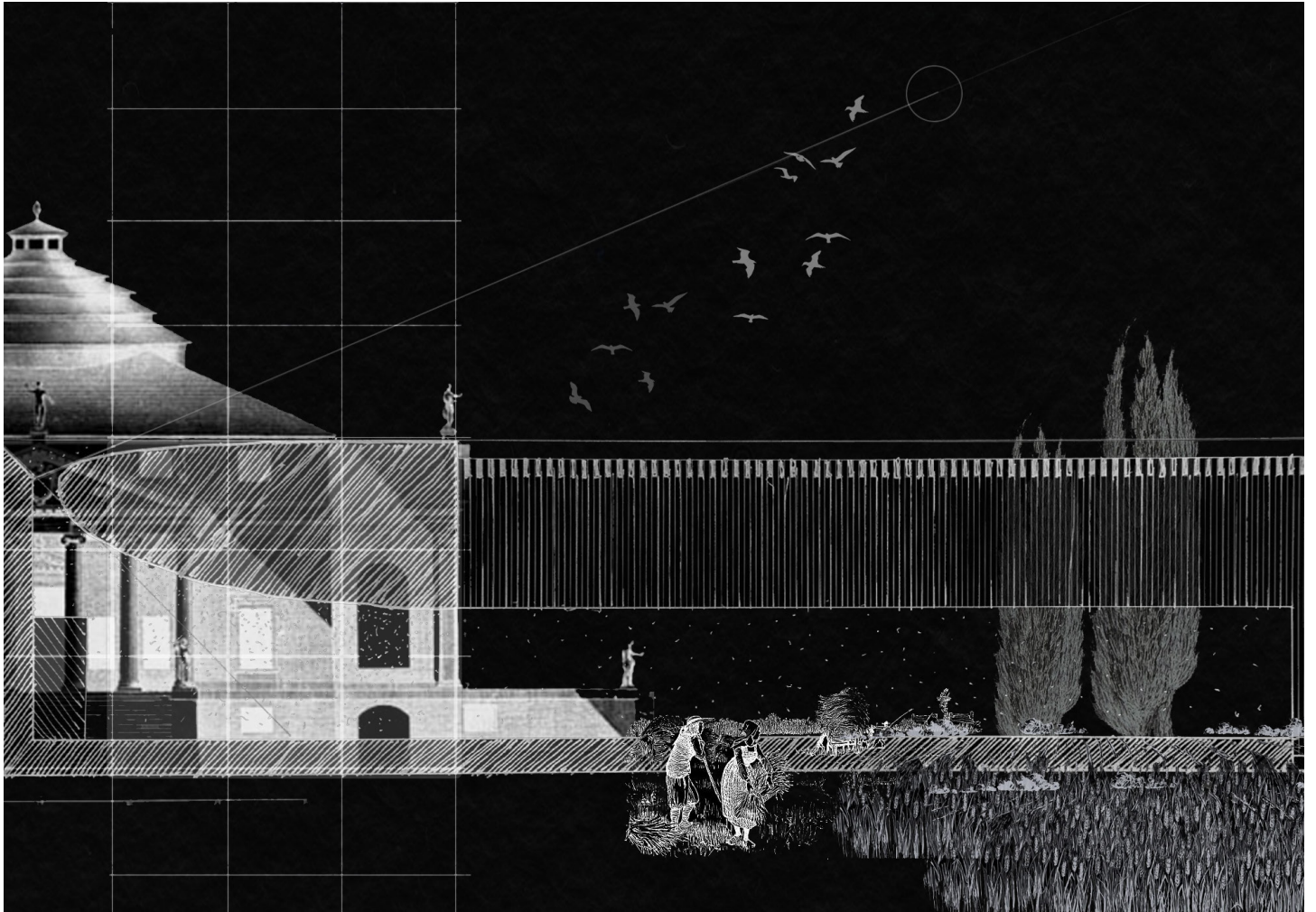
Two open-air pavilions are nestled into the hillside facing the field. One connects arriving students to the campus and encourages collective learning about the environment, while the other tracks the sun from east to west in an atmosphere of quiet solitude. An amphitheater is situated where these two elements converge. It is within this junction between earth and air where students can interact with and learn about the environment.

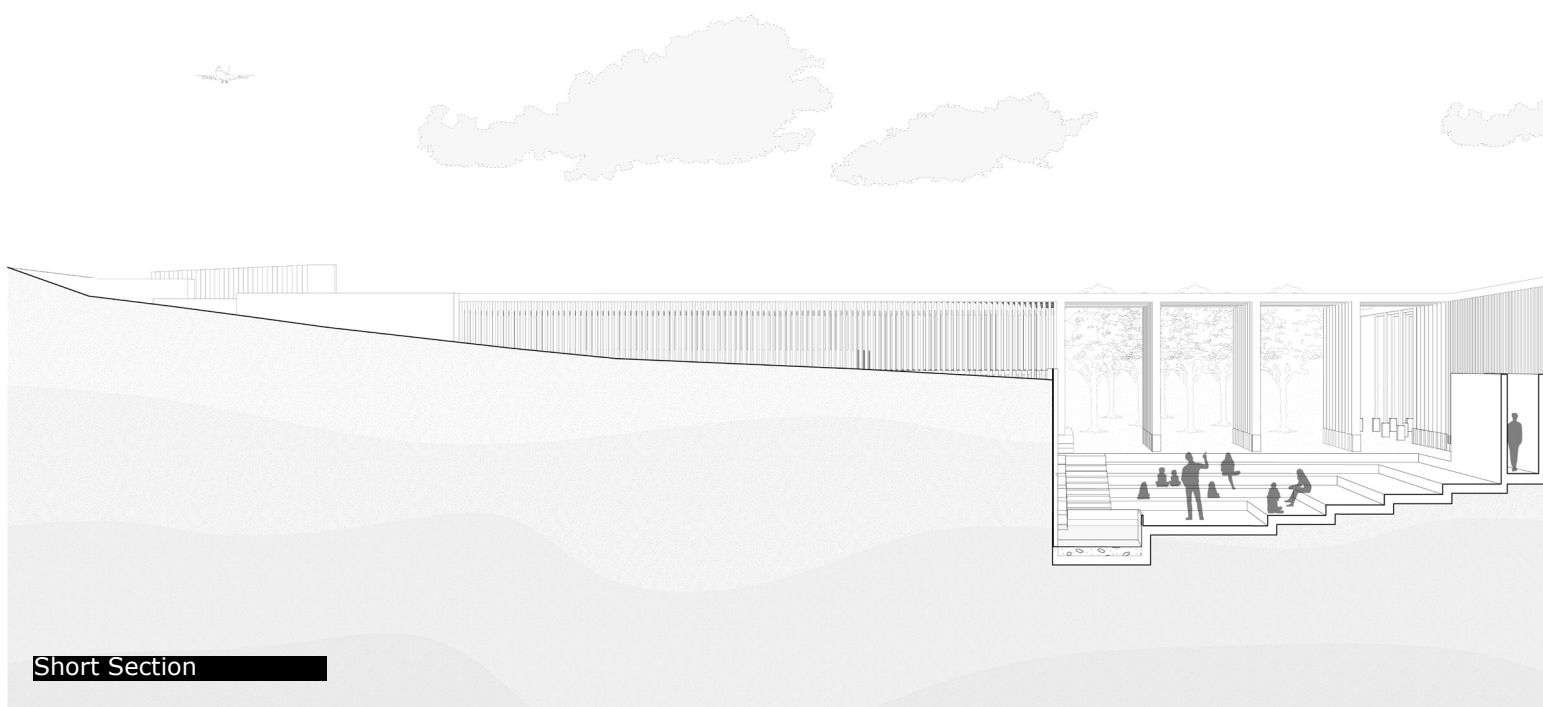
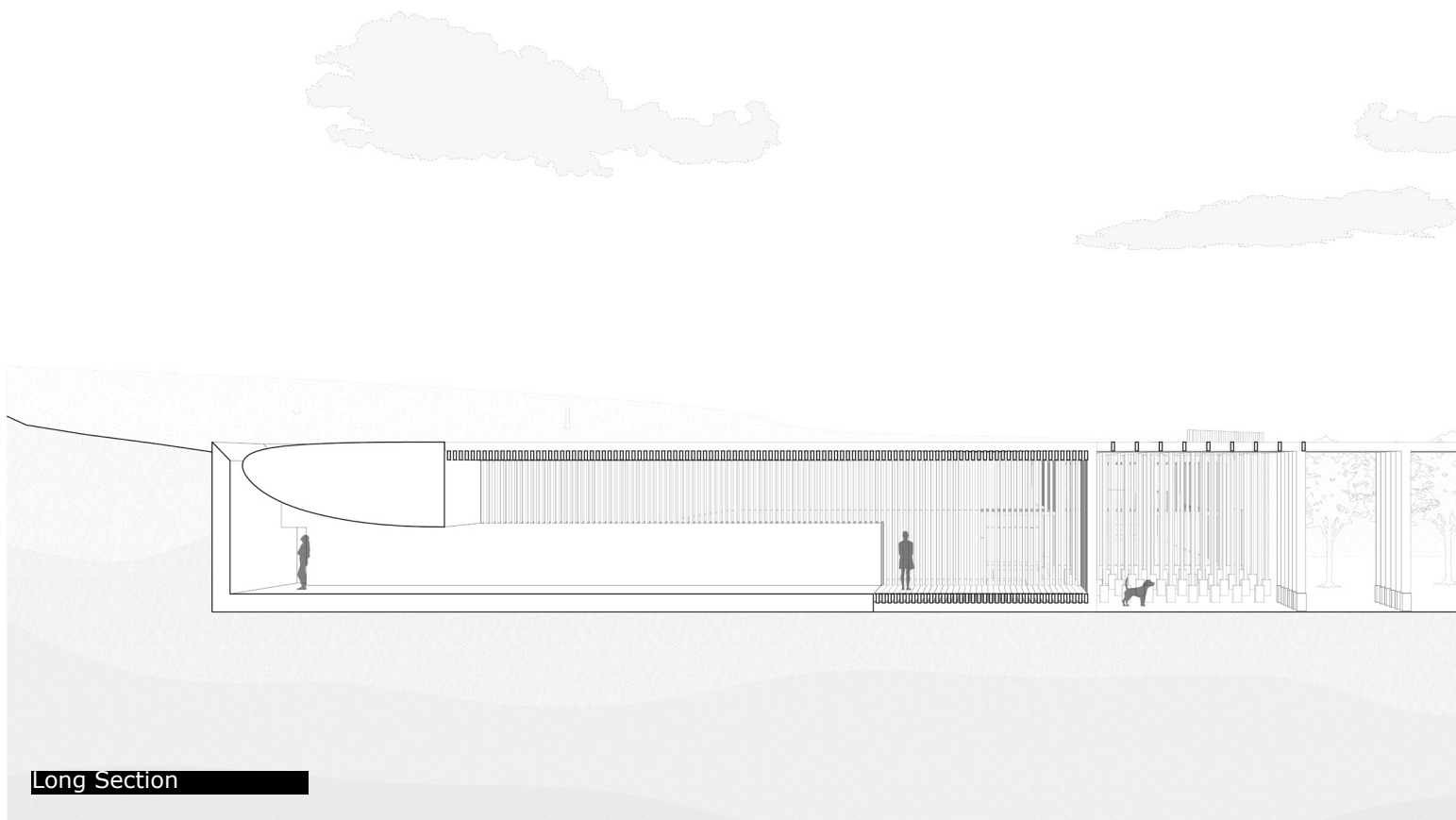


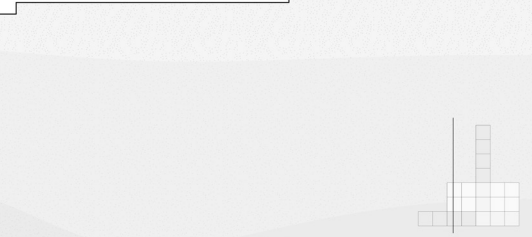
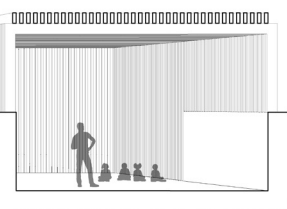
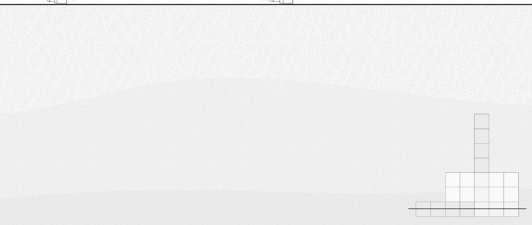
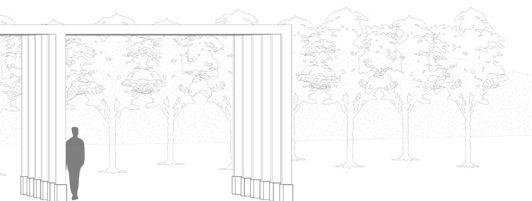
## EXPLORING WALL AND FIELD AS KNOWN AND UNKNOWN

The instance of learning is imagined as having your back to the understandable, facing into the unknown. This takes the architectural form of a wall and a field.

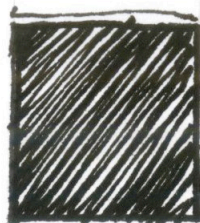




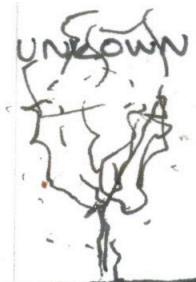




KNOWN

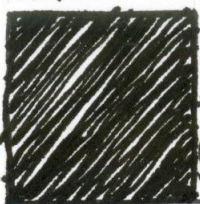


UNKNOWN

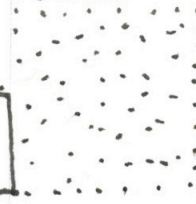


↑  
The point of learning/growth, with  
back to the unchanging, facing the changing

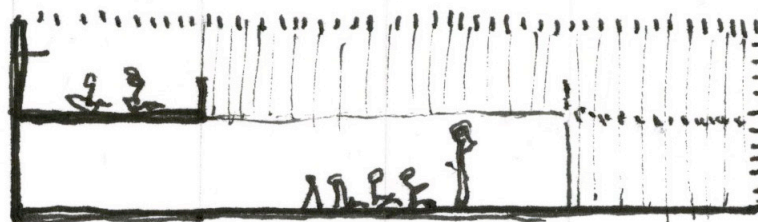
WALL



FIELD

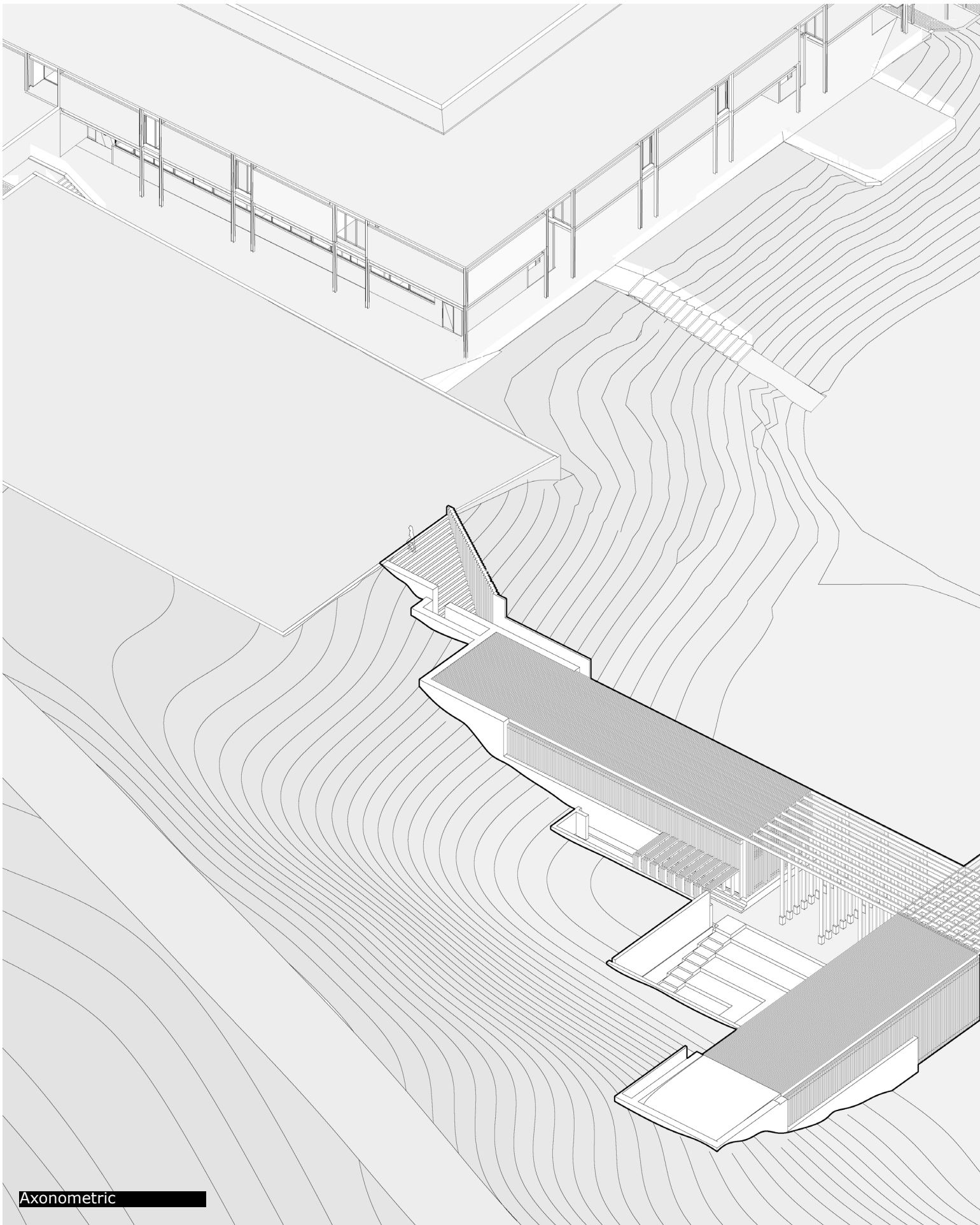


Contemplation

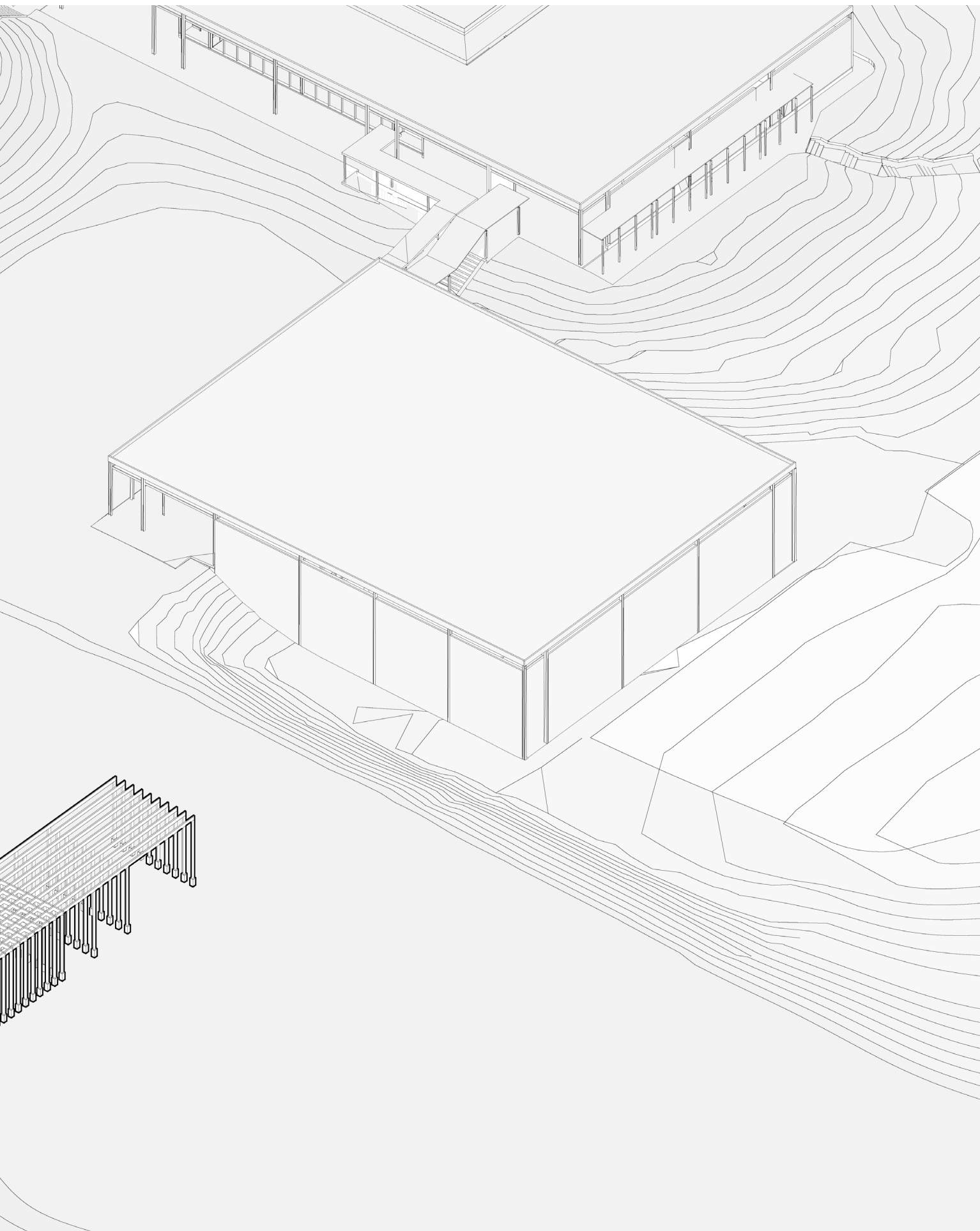


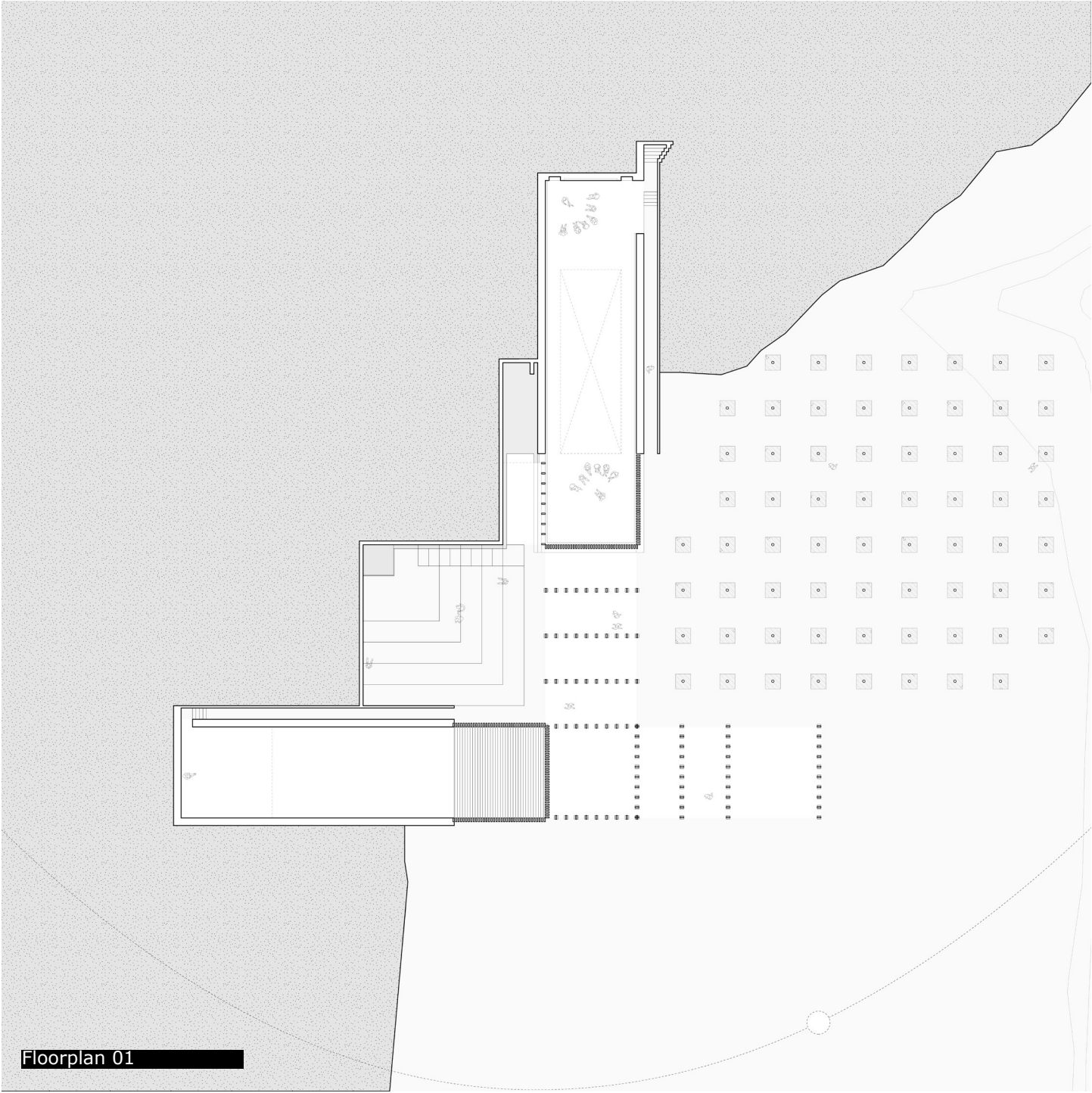
community





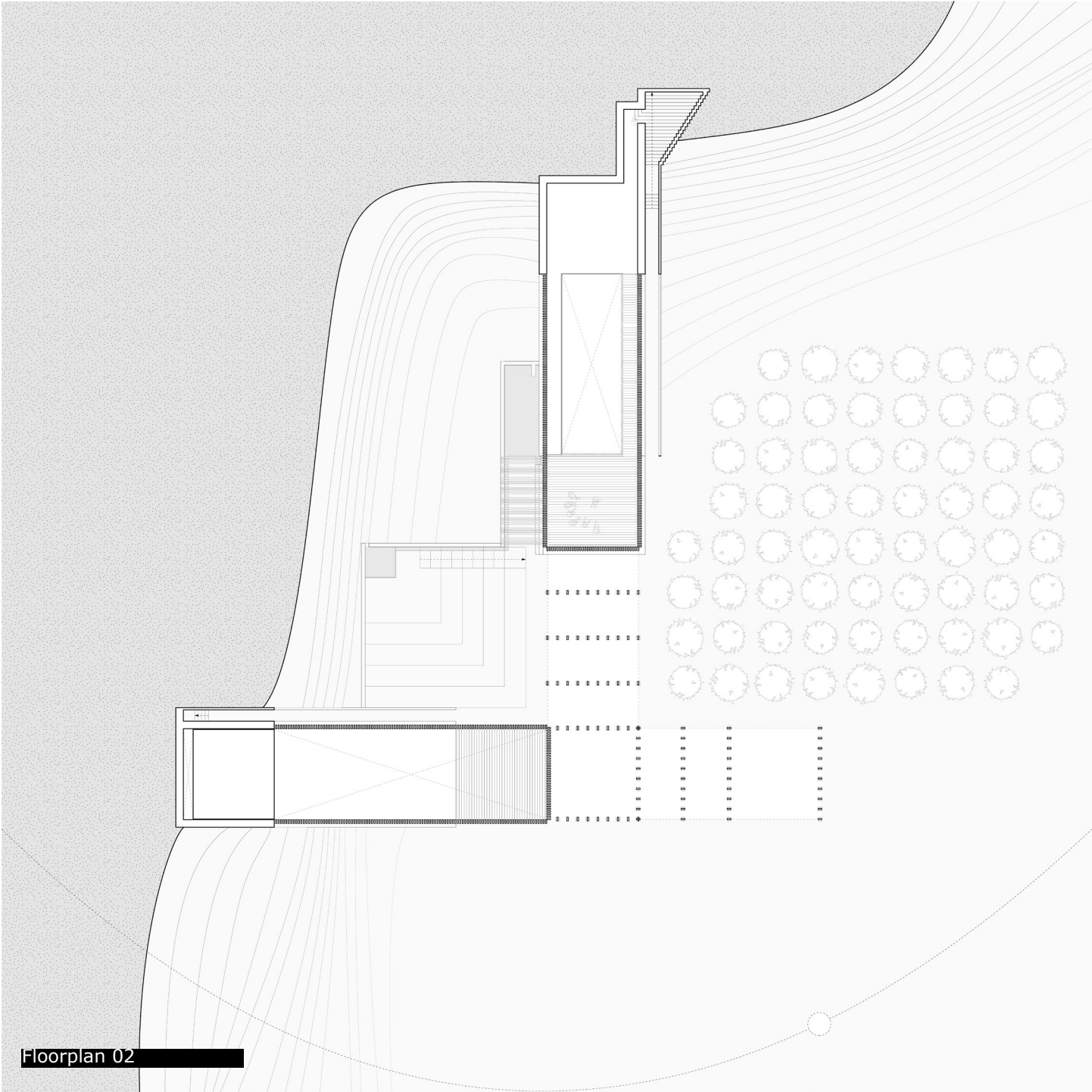
Axonometric





Floorplan 01





Floorplan 02



VIEW FROM INSIDE THE AMPHITHEATER













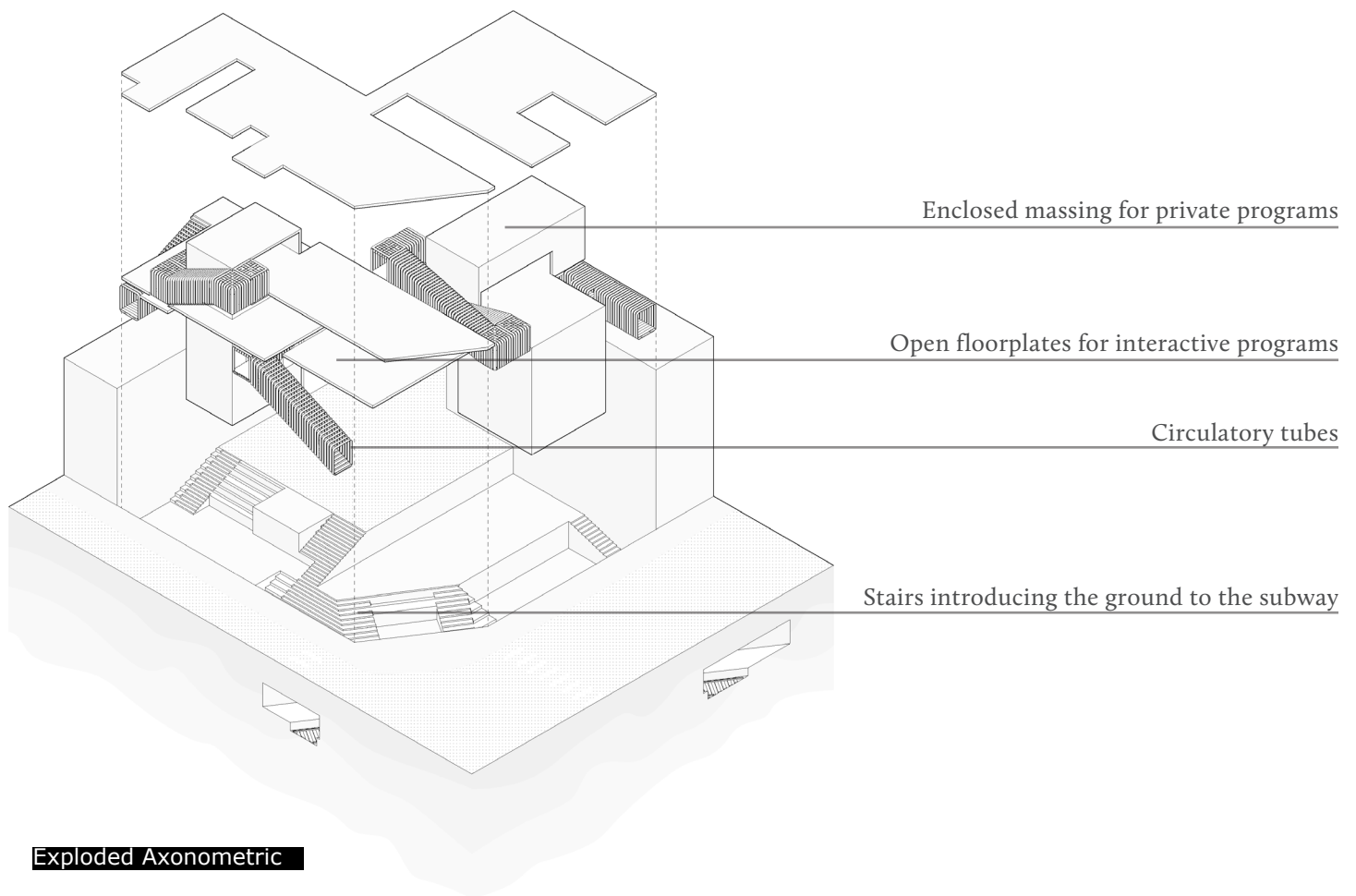
# CONSTRUCTED VOID

Hacker Lab | New York City, NY | Lucia Phinney | Fall 2022

## EL LISSITZKY in the BIG APPLE

Constructed Void interweaves a series of masses and planes in an open-air atmosphere to create informal settlements. Below the horizon, the subway intersects with the ground plane through a slanted subtraction. This engagement creates interactive spaces such as a café. Meanwhile, above-ground areas inhabit the voids implied between floor planes and the interiors of building blocks. The open-air floor planes host programs for movement and interaction, while the introverted building blocks host programs for individuals. Semi-enclosed circulatory volumes are woven throughout the building to connect these elements together.

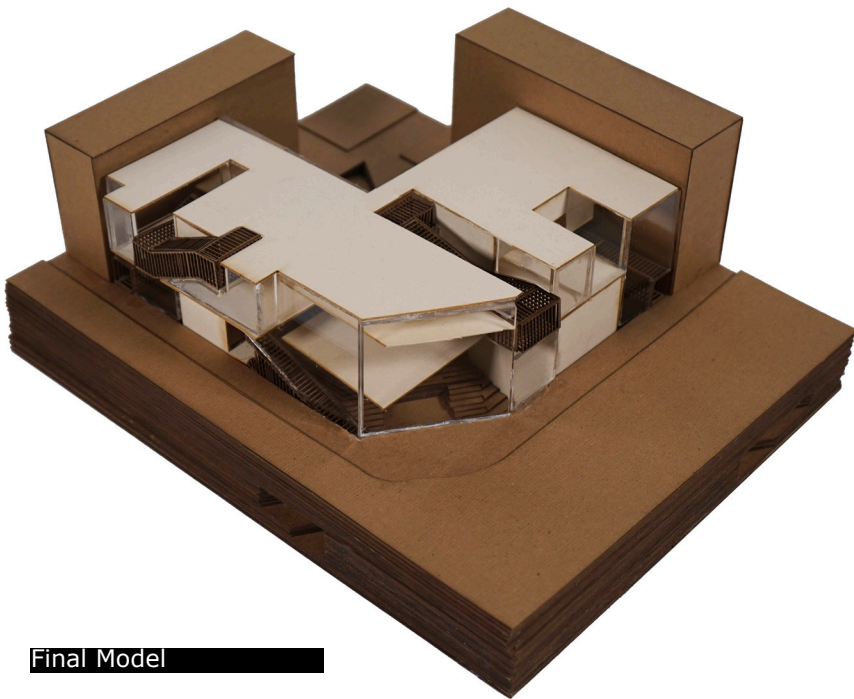
These concepts were inspired by a personal interest in El Lissitzky's Prouns, which resonate well with the West Village both formally in plan and abstractly in their cohesive and modern individualism. Like the Proun, this project explores implied volumes through spatial relationships.



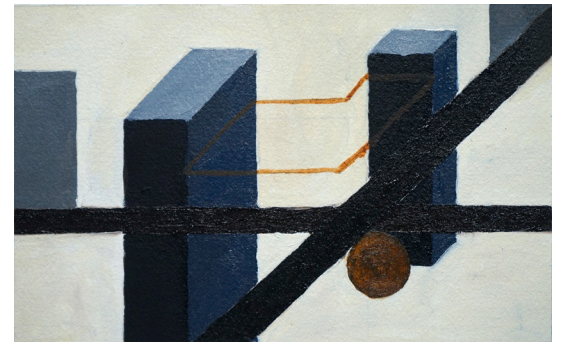
## ABSTRACTING ARCHITECTURE INTO PLANES AND MASSES

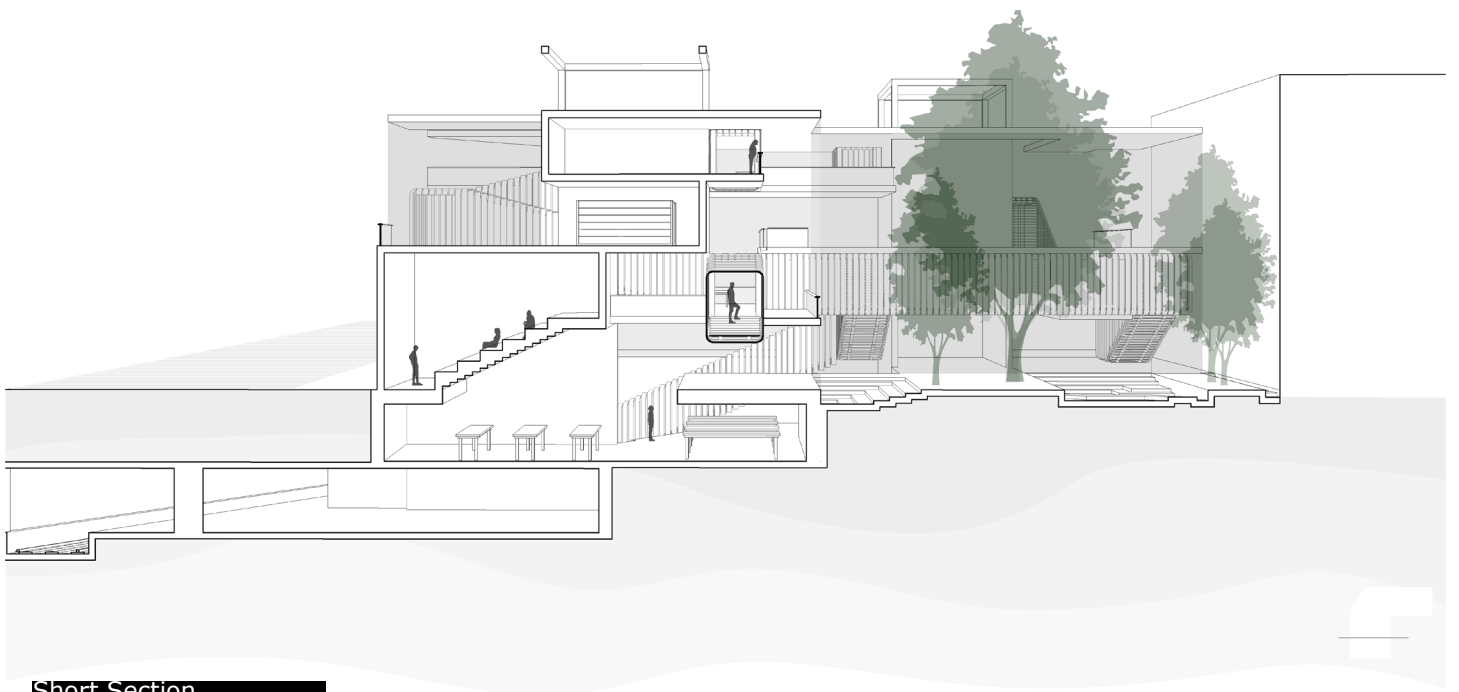
Drawing inspiration from Suprematism, the structure is composed of simple masses and planes. The planes are designated for communal programming, while the masses are hollowed out for private programs.





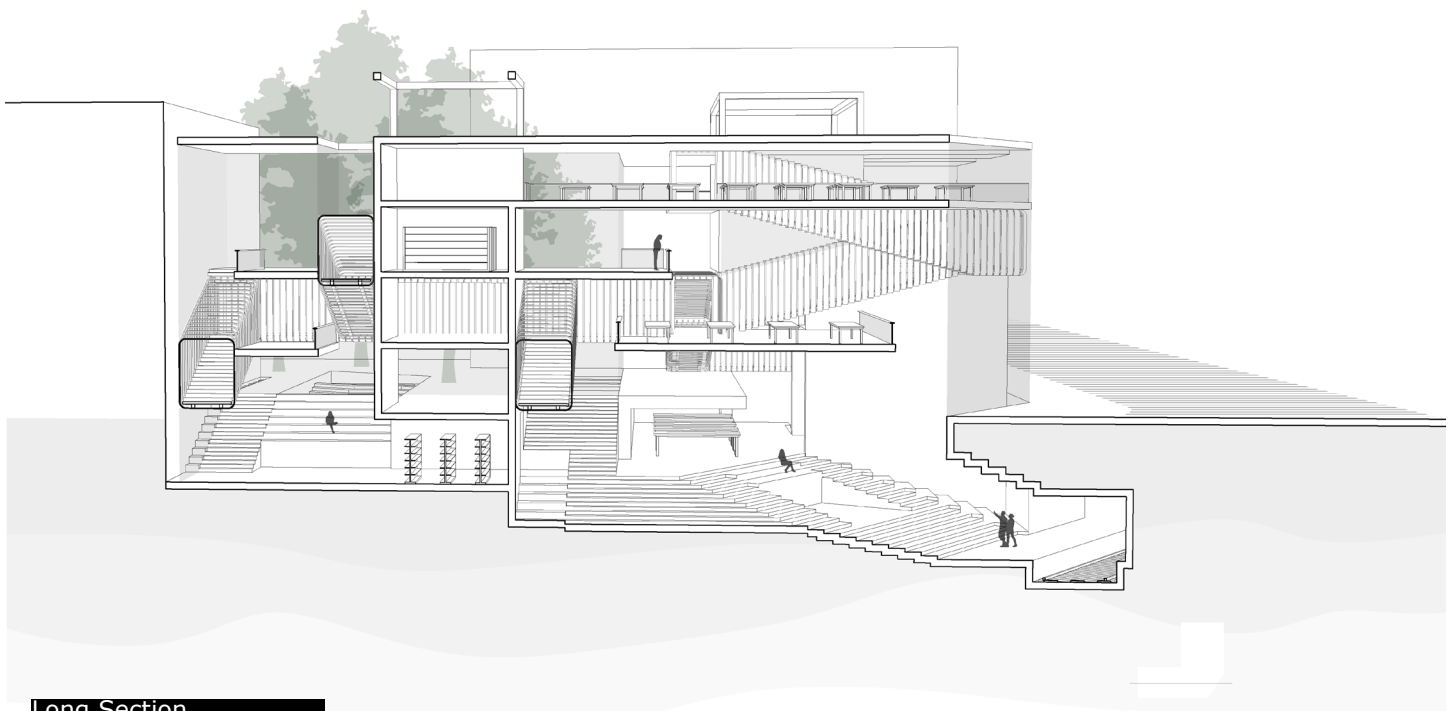
Final Model





Short Section



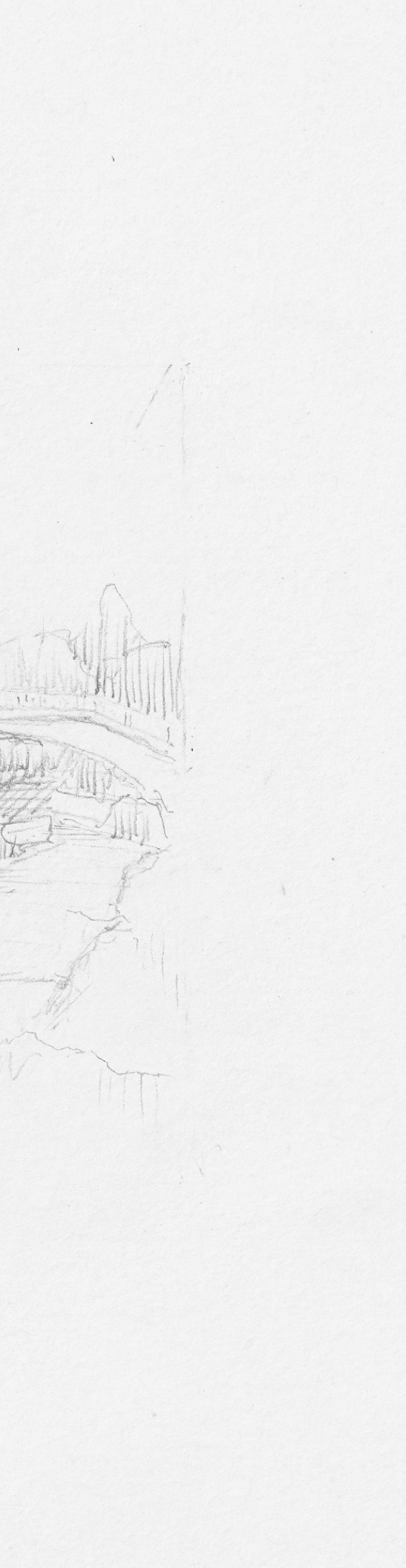


Long Section



Vicenza





# **i n P E R S P E C T I V E**

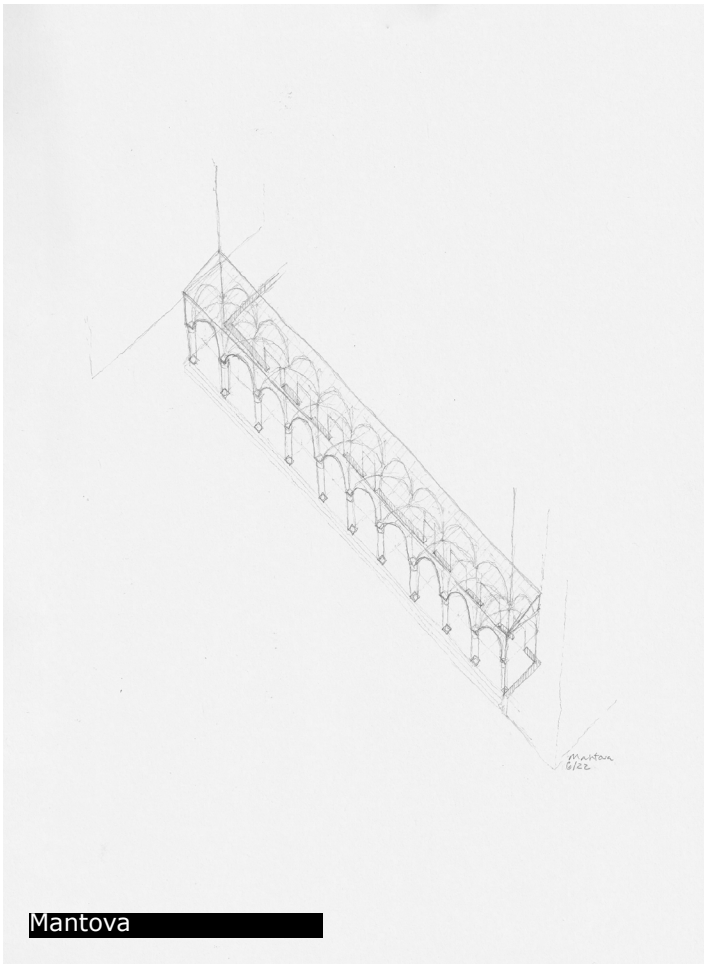
Study Abroad | Luis Pancorbo & Ines Robles | Summer 2022

## **from PALLADIO to SCARPA, SKETCHES from NORTHERN ITALY**

This rigorous journey through the Veneto explored sites of architectural significance, ranging from the Roman ruins of Verona to Scarpa's Brion Cemetery, resulting in the creation of a sketchbook drawn with a critical eye. Following in the legacy of Thomas Jefferson, the study abroad program was based in Vicenza and emphasized the works of Andrea Palladio. Additional areas of study included urban and climatic conditions in Venice, landscaping at places like Giardini Valsanzibio, and sectional characteristics of urban Italian apartments.







Mantova



Vicenza



Verona

