



PORTFOLIO



ARIAN GOLROKH AMIN

SELECTED WORKS

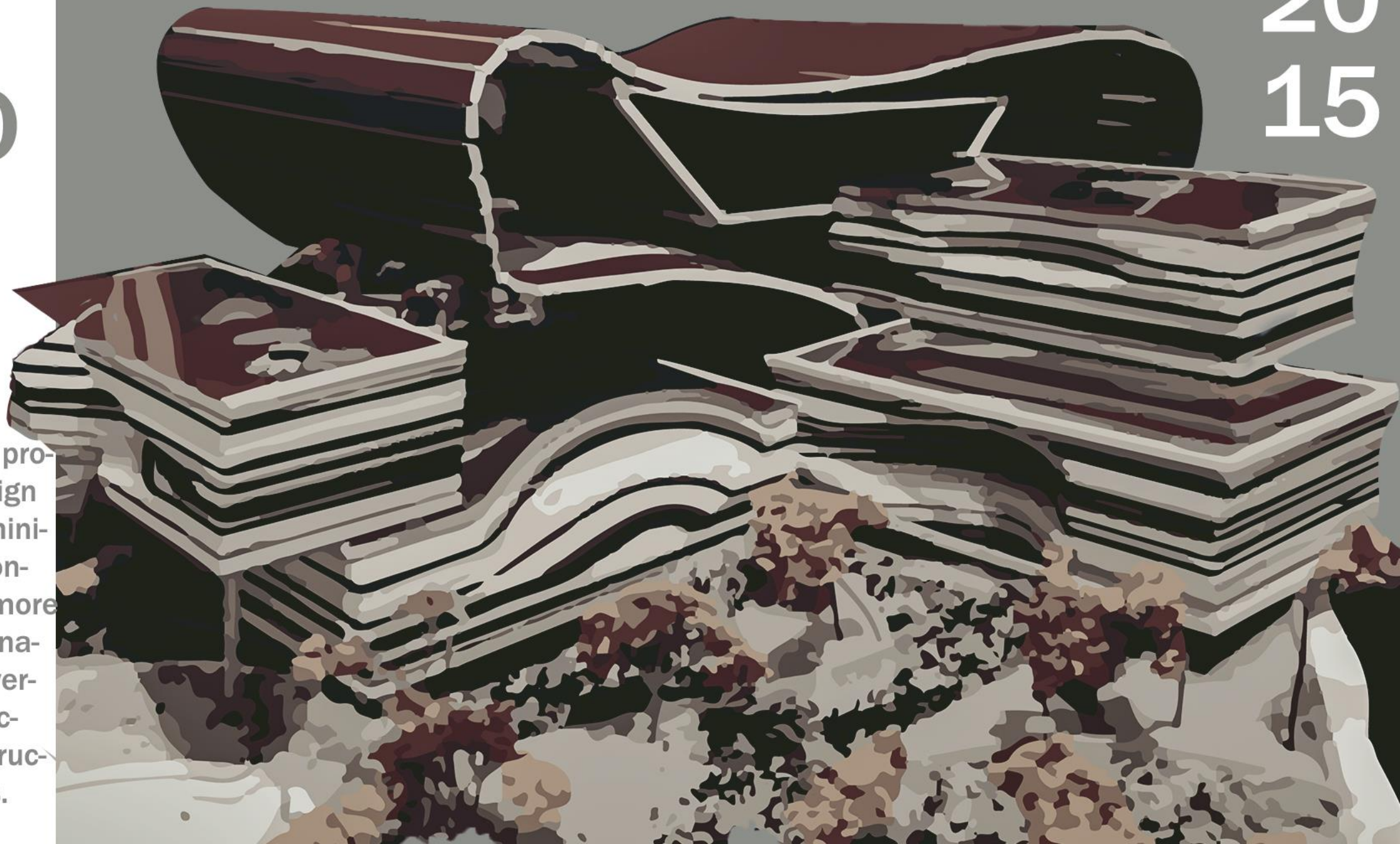
PROJECTS

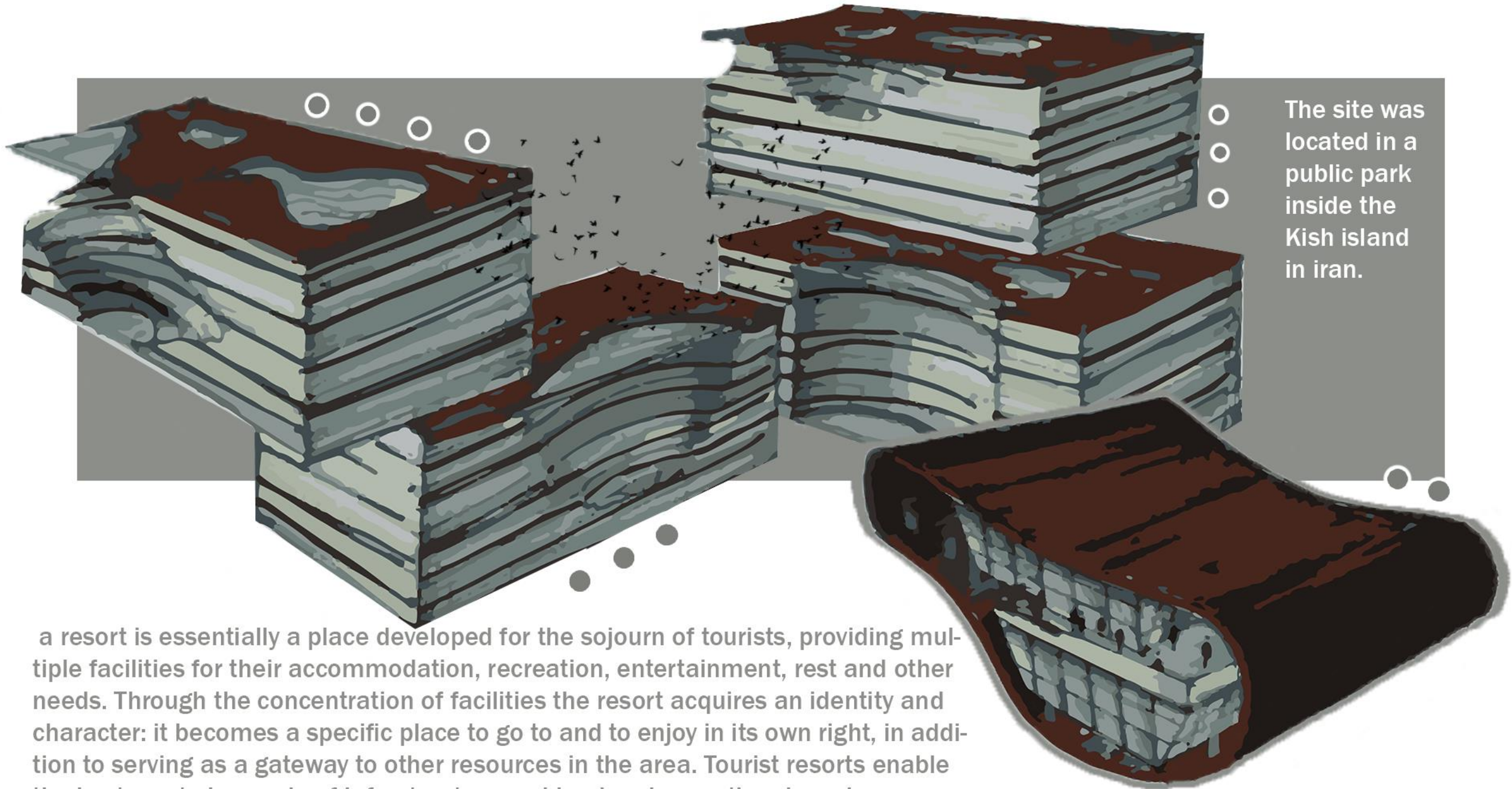
AM BRO SIA

ECO RESORT
COMPLEX

20
15

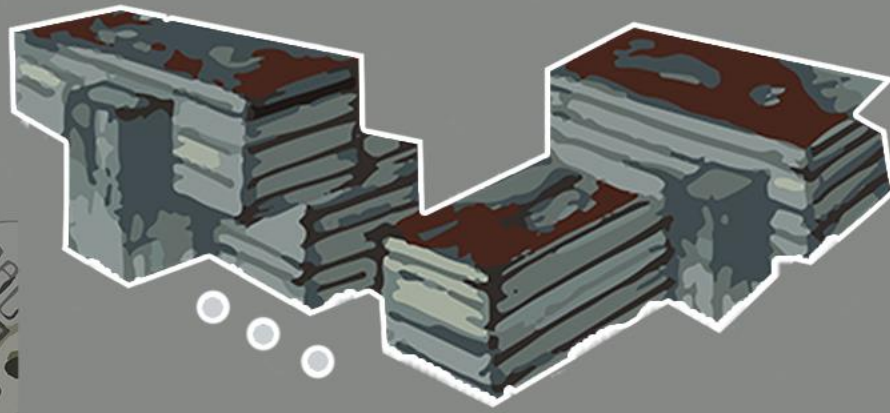
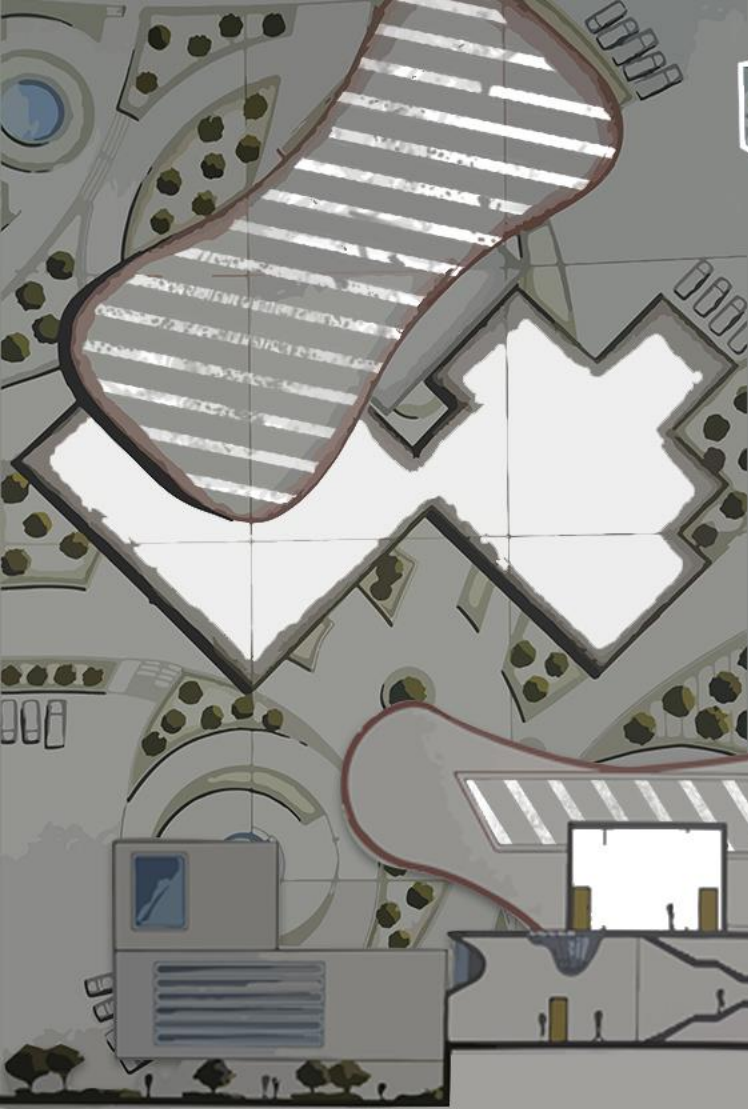
The aim of this project is to design a resort with minimum energy consumption and more usage of sustainable materials (vernacular architecture) and construction techniques.





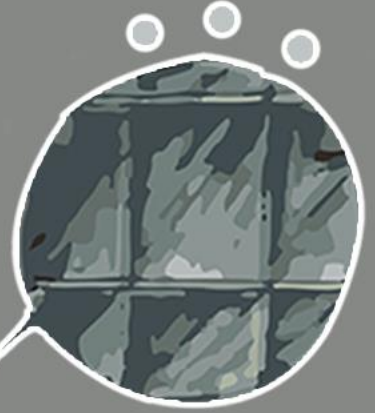
The site was located in a public park inside the Kish island in iran.

a resort is essentially a place developed for the sojourn of tourists, providing multiple facilities for their accommodation, recreation, entertainment, rest and other needs. Through the concentration of facilities the resort acquires an identity and character: it becomes a specific place to go to and to enjoy in its own right, in addition to serving as a gateway to other resources in the area. Tourist resorts enable the best use to be made of infrastructure and land and operational services.

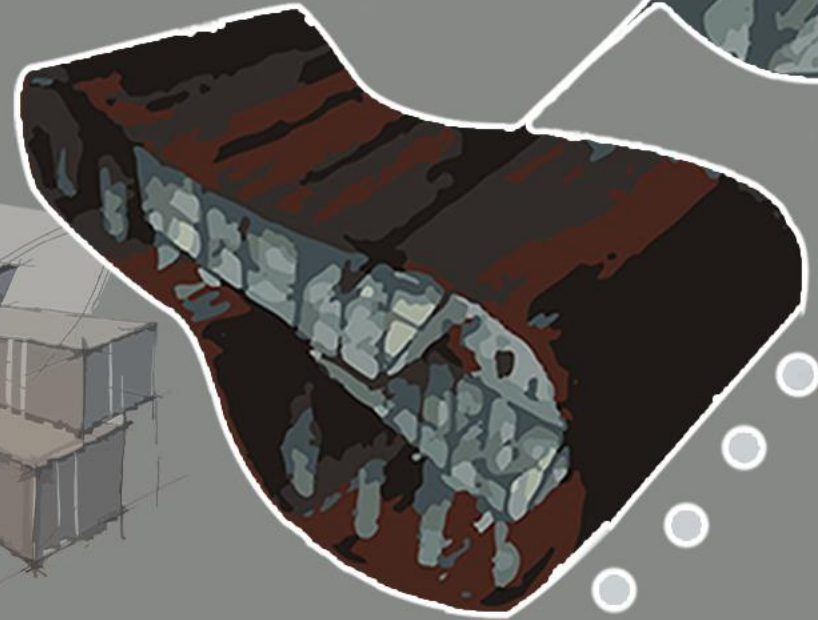


My design concept was based on this belief that while design should be innovative and functional, efforts should be made to involve local craftsman and preserve local traditions. This not only brings down the cost of a project substantially, but also reduces environment pollution entailed by transportation and make quality easier to manage, in addition to involving the local craftsman and sustaining livelihoods in the region.

The AMBROSIA eco-resort offers a tropical experience to visitors. This resort makes only a minimal impact on the environment without compromising guests' comfort and safety. It will draw on and blend with the local natural and cultural environments by employing principles of environmentally friendly design.



The materials used in this project were influenced by the indigenous kish architecture, the buildings were re-interpreted in sustainable design using locally sourced products such as wood, stone, mud and bamboo trusses on the roof





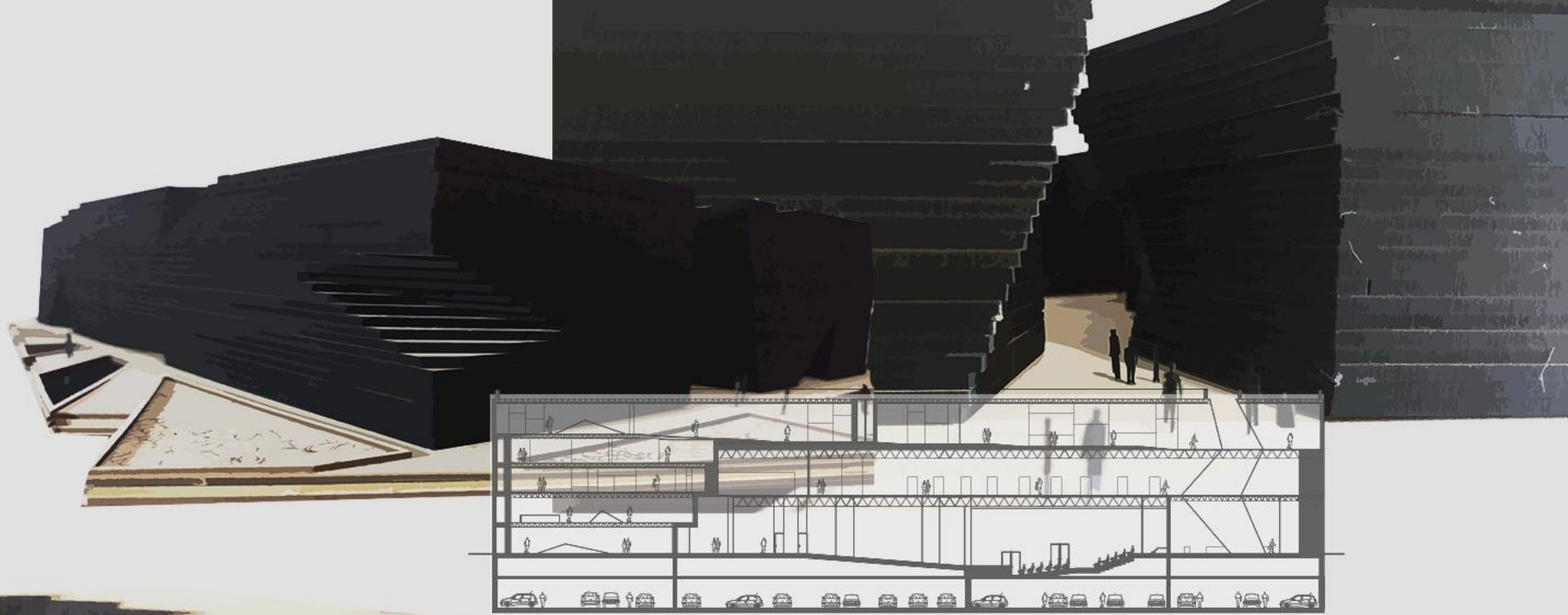
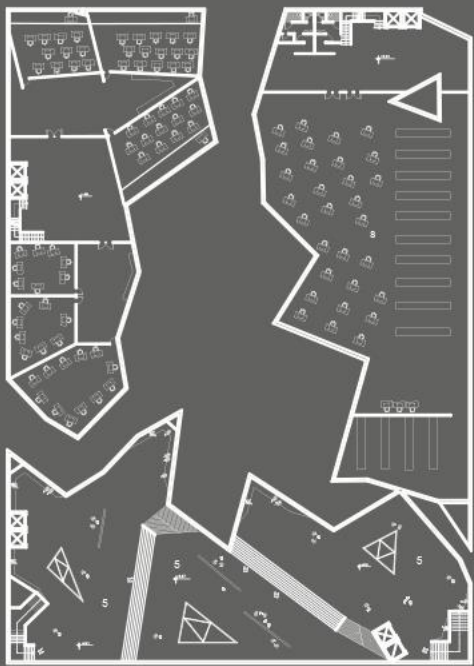
WAR HISTORY MUSEUM

CER
BER
US

All my feelings towards war resulted in a single building, the horror and scariness. Almost a piece of sculpture.

the CERBERUS is in line with recent museums in the world where the image is more important than building the exhibits

20
16



WAR, the word itself invokes various feelings and emotions and the mind envisages a series of pictures that relate them to war. The concept of war in itself has a lot of parameters which directly relate to the human mind, The human senses and the human emotions. A tragic concept which left deep scars in minds of people which cannot be possibly erased. All these aspects contribute in building up the concept behind the creation of CERBERUS war museum. The idea behind CERBERUS war museum is that visitors physically experience the portrayal of war while simultaneously feel a mental impact which contributes in conveying the message: which being eradication of war and leading to eternal peace.

20
16

A huge, complex project involving many facets of medical care and research in tehran.

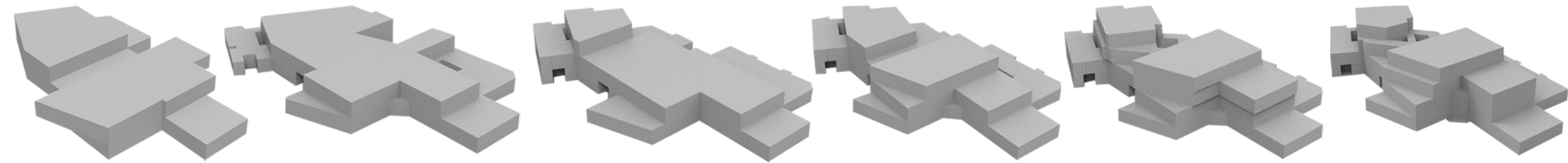
Green hospital concepts will play an important part in the curative process in time to come. Instead of being referred

to as a place that houses healthcare amenities, hospitals of tomorrow will now focus on wellness and be transformed into welcoming spaces to get well.

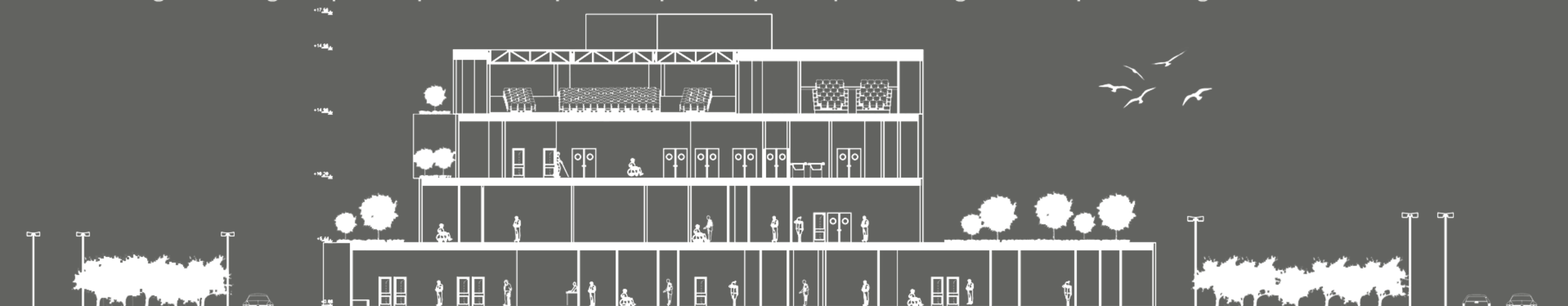
ACESO HOSPITAL

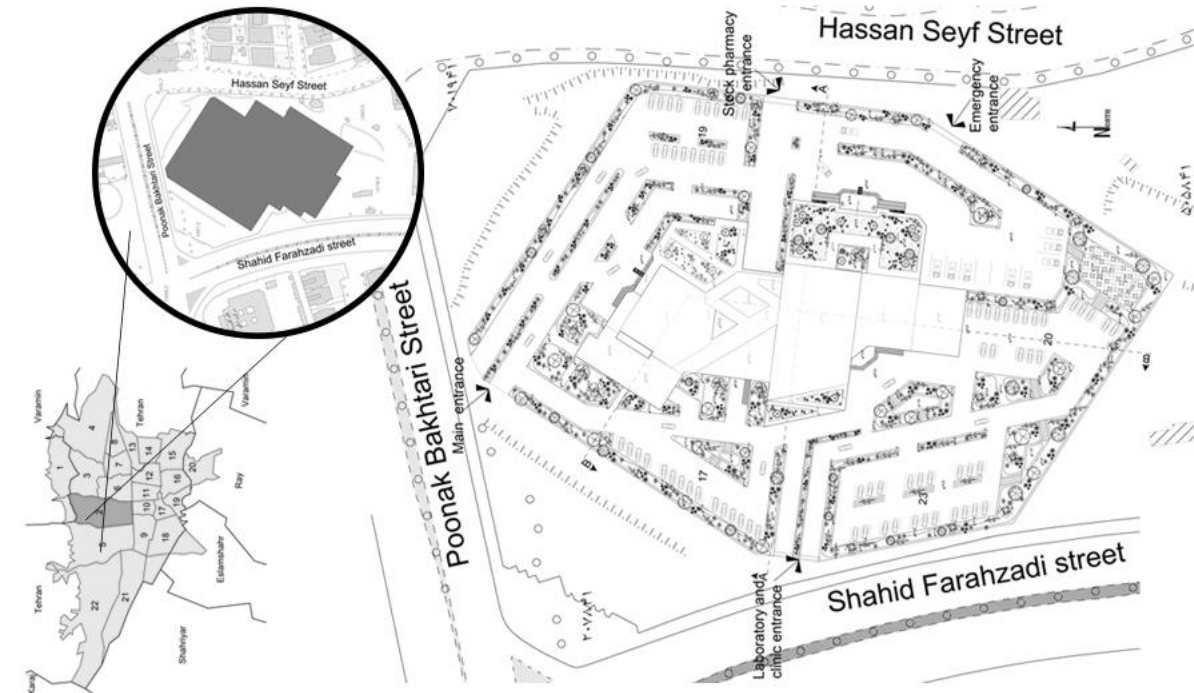
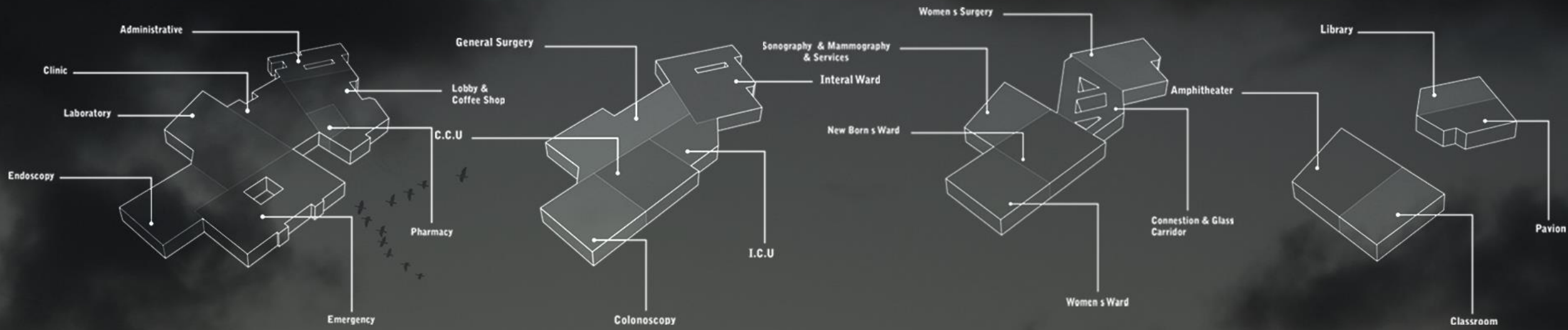
Since the second half of twentieth century up today, the architectural design of hospital buildings has faced great changes. These changes are coming from vital role that these types of buildings will play in city context and society as urban features.





A green hospital can be defined as one which enhances patient well-being, aids the curative process while utilizing natural resources in an efficient environment-friendly manner. Research shows that a well-designed hospital building can actually accelerate the curing process increasingly therefore I focused on green strategies to enhance the positive impacts on patients and staff in hospitals. The benefits of this green hospital is that it can reduce patient, Eliminates sick building syndrome for both patients and staff, reduces stress levels in hospital workers, thus improving quality of care lower energy and water consumption. The focus areas for my green hospital were lighting, indoor air quality, green housekeeping, clean and green interior building materials and gardens & landscapes. The aceso hospital maximize day light as it is proven to have positive effects on patients and enhance their health and health being. It also optimizes the artificial lighting requirement. For indoor air quality this hospital improves air by providing courtyards spaces with native and adaptive plant species which are free from any allergic effect. It also uses certain species of indoor plants which not only produce oxygen but also reduce indoor pollutants. The aceso hospital also uses green building materials for instance I consider using cooper based interior materials as it is proven to be a good material for touch surfaces in hospitals. Gardens and landscapes are an aesthetic delight and promotes wellness of patients. Therefore, aceso hospital consider gardens and green spaces for patients as it is proven that persons exposed to plants have higher levels of positive feelings.





Hospital architecture must balance the needs of an ever-changing environment driven by developing technologies, complex workflows, infection control, patients with increasingly complex illnesses and sophisticated engineering systems, whilst also navigating and incorporating social and environmental sustainability, economics, and most importantly - human beings. A key focus of the project was to create a sense of welcome for patients, their families and the hundreds of staff who inhabit it daily. An important part of being welcoming is to counter the stress and anxiety often felt in hospitals, and to remove the sense of the anonymous institution. This has been accomplished through consideration of scale, material, color, texture and importantly, clarity in navigation. The key strategic design move of the hospital's high street combines a sense of welcome, community, and navigation. It is a space for patients, visitors, families, and importantly for the staff who inhabit and navigate the building daily. Artwork and graphics have been used to bring color and joy throughout the facility – incorporated at a scale that understands and befits the space and connects back to the community through the use of local artists, neighboring high school students and reference to the local flora and fauna.

ANUBIS

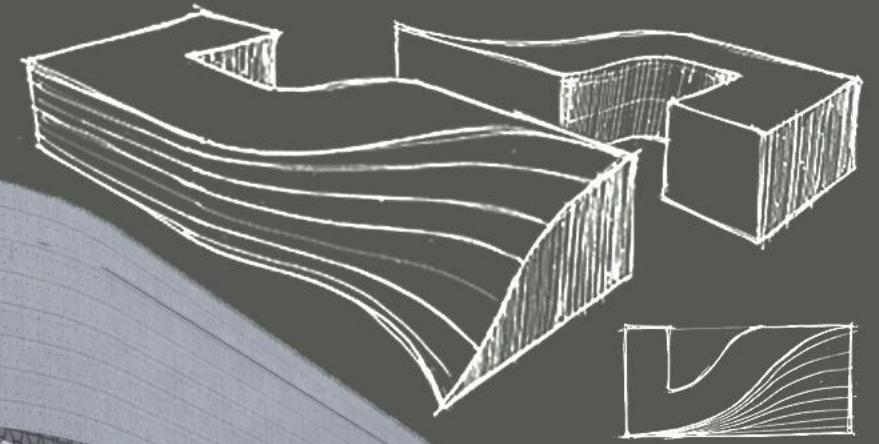
EXHIBITION CENTER

20
17

exhibition hall is the large area hall to display pictures, sculptures, or other objects of interest that people notice or admire. The Exhibition Industry has grown with the economic expansion and urban development. The Anubis Exhibition hall set a new bar for high performance space frame building with lighting fixtures to provide the variety of lighting levels. It uses both direct and indirect natural light to create an elegant circulation corridor providing an iconic, unconventional and accessible space to the visitors.



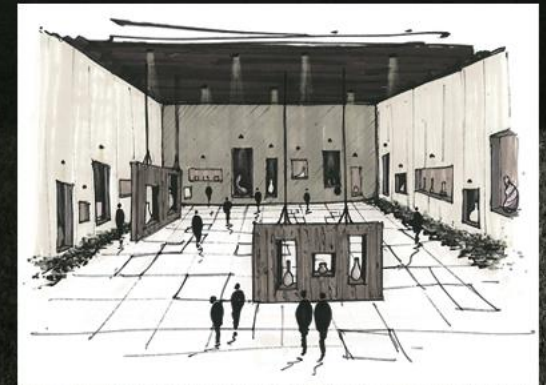
This building is not based on an idea of style or the rehashing of ready made ideas or external shape because its architecture does not separate the inside from the outside or provide a pretty facade behind which a typical experience exists; rather this architecture has an organic connection to the public at large and to those aspects of experience that are also intellectual, emotional, and sensual. The integration of these dimensions for the enjoyment and edification of the public is achieved in a building that respects the hand crafted nature of architecture and its immediate communication from the hand, to the eye, to the mind. After all, the language of architecture beyond words themselves is the laughter of light, proportion and materiality.

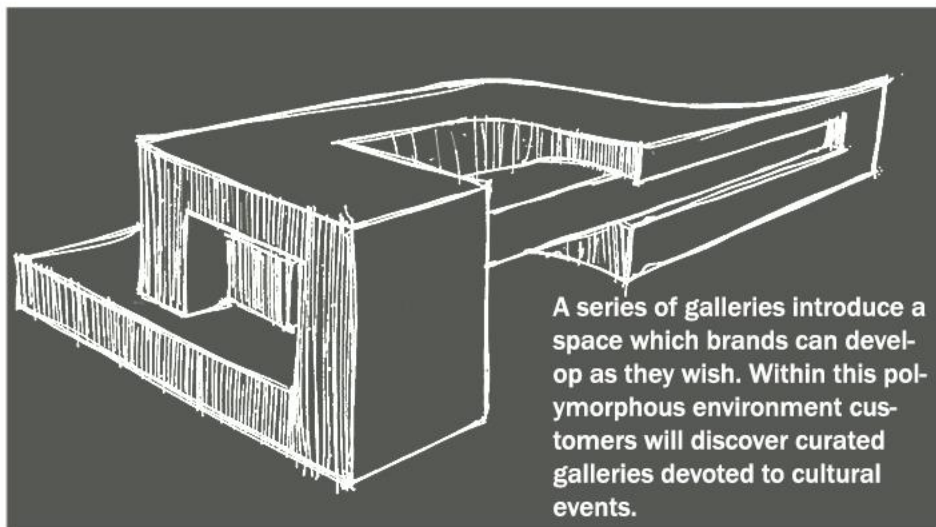


green concrete with Pulverised Fuel Ash (PFA), aka 'Fly ash' as a cement substitute

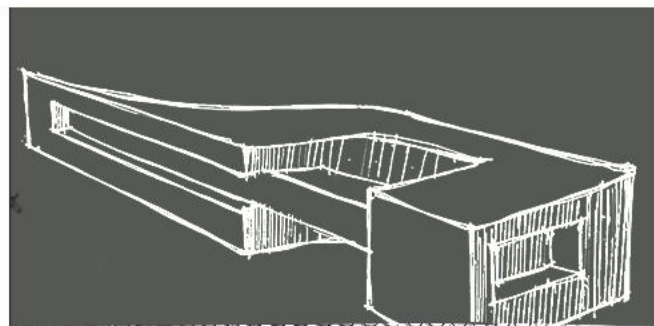


This exhibition hall, as both department store and public event space, aims to re-establish the historic Persian connection between culture and commerce to form a contemporary public forum for the city. Comprising 8,400m² over three floors, the Exhibition Hall will be suffused with natural light during the day, and present a glowing aspect to the street at night through a new translucent facade.



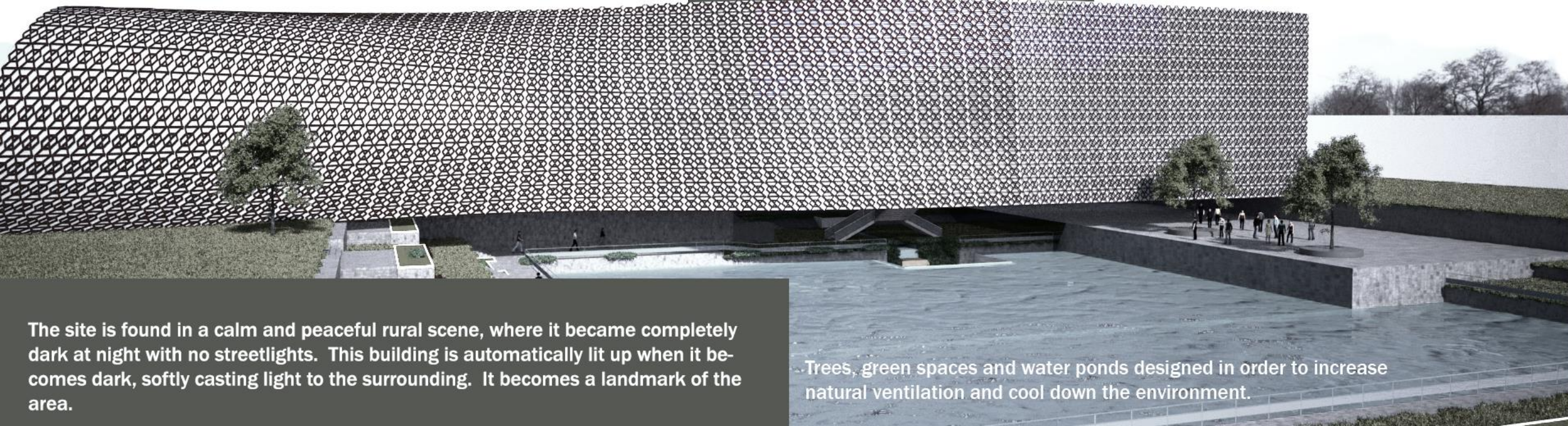


This building uses environmental friendly materials such as green concrete. Green concrete is made of new raw materials namely fly ash, . Fly ash is a waste product from coal power plants and is commonly disposed of in ponds and sent to landfills



Shiraz is one of the oldest cities of the ancient persia. it is a cultural city with history of more than 4000 years.

It not only creates rich material wealth-being for the Persian nation, but also writes a brilliant chapter about the excellent traditional culture. Shiraz has the reputation of the most majestic scenery in the southeast China, also its architecture is featured as "Elegance and Grace".



The site is found in a calm and peaceful rural scene, where it became completely dark at night with no streetlights. This building is automatically lit up when it becomes dark, softly casting light to the surrounding. It becomes a landmark of the area.

Trees, green spaces and water ponds designed in order to increase natural ventilation and cool down the environment.

20
17

The house is a machine
for living in
- Le Corbusier

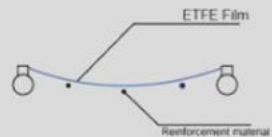
CAR MUSEUM

HERMES

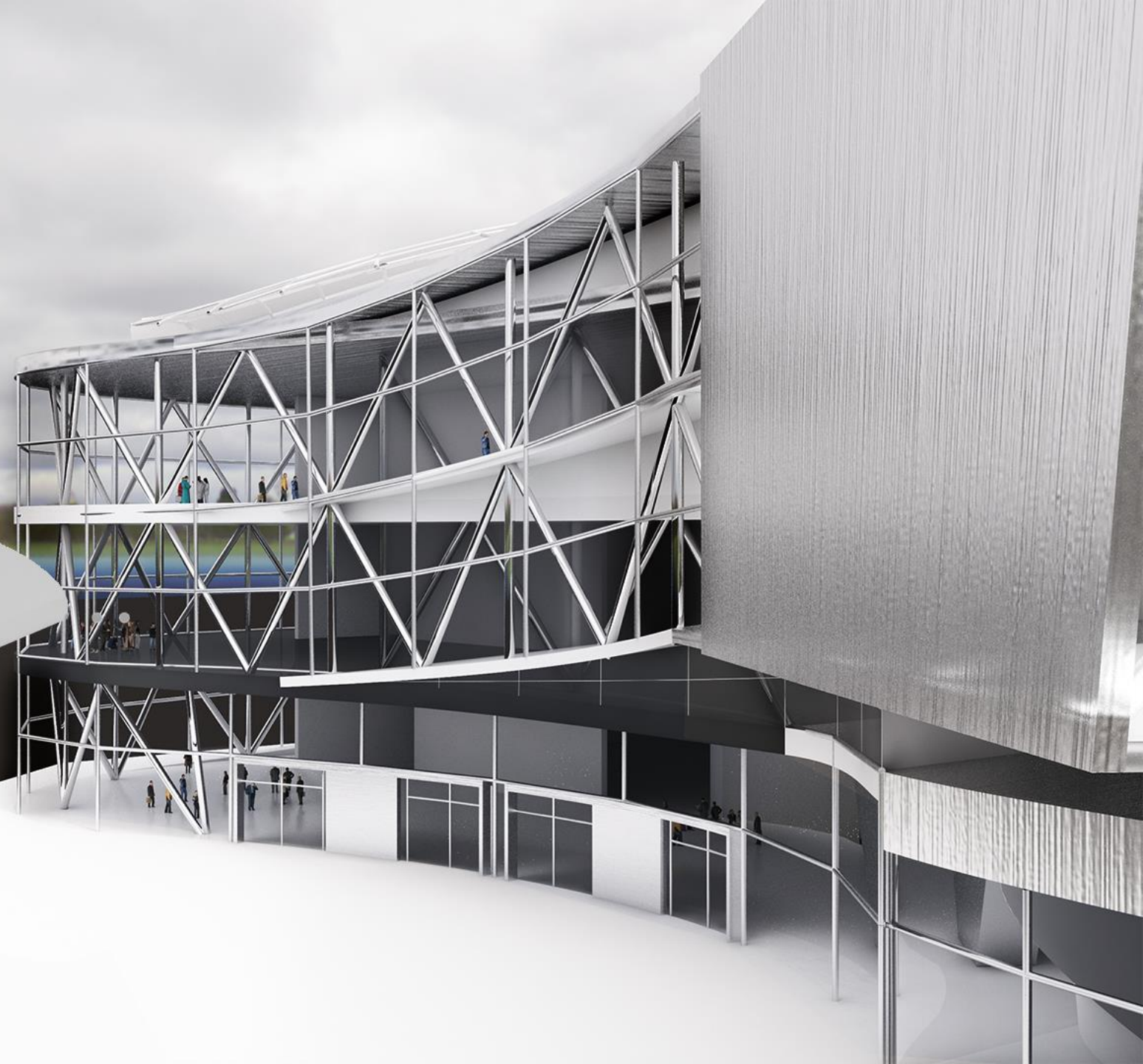
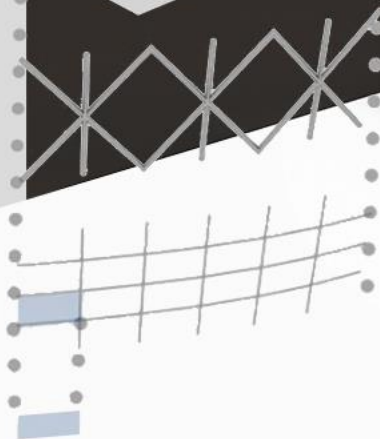
HERMES is a Museum for
people to freely move
through, to dream, learn,
look and let themselves
be oriented by fascina-
tions, light and space

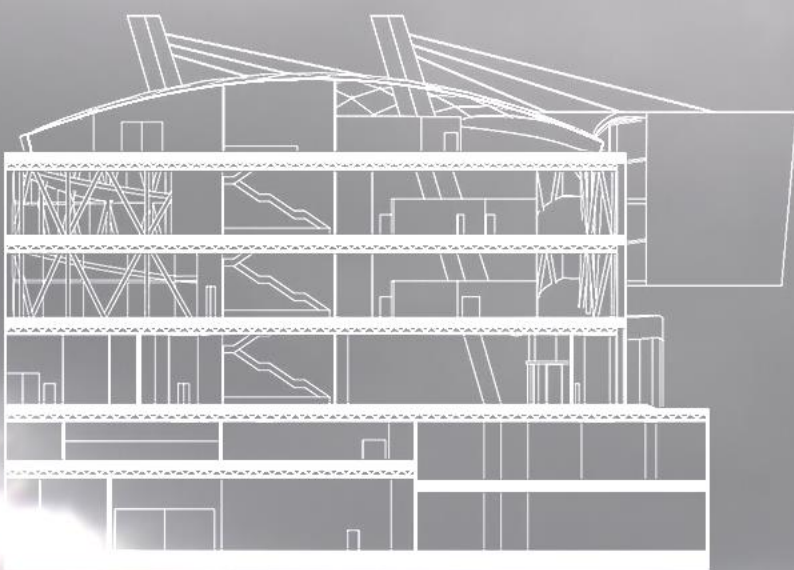
“Hermes” is a pro-
ject for a building to
be dedicated to the
automobile: the car
as an object of
desire, a world to ex-
plore, a technology
to study, an article to
display and a means
to travel around the
building.



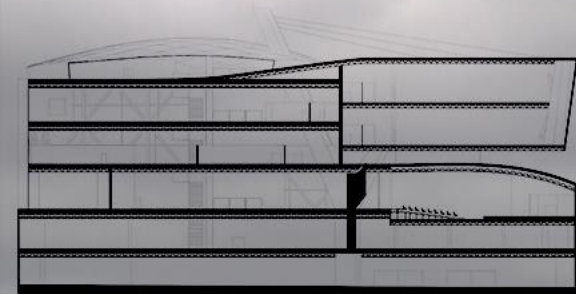


ETFE pillows are used on the roof in order to minimize the insulation within the building in summer, and reduce the necessary cooling loads and energy consumption. This synergetic effect is especially important, since it helps to improve the economics of the integrated photovoltaic installation.





The outer façade of the building is completely permeable and reveals on sight the interplay of the different levels and the fluidity of the internal and external spirals. The building could seem to appear as an urban car showroom, with its corners and angles filled with tempting shining automobiles. The materials used in the facade are mostly aluminum and solar control glasses. Aluminum is strong and highly malleable, as well as being one of the most plentiful resources on this planet. This makes it very commercially viable. It is also highly sustainable, environmentally friendly and almost endlessly recyclable and glass is known to be an excellent green material.



Here the world of the automobile intersects with the human and organic world creating a new tectonic structure with methods differing from the usual flat open spaces, squares... all on a human scale. Here everything is geared to the automobile – the car is the point of reference

located to the North of the city of Tehran. at one of the highest urban altitudes and with a comprehensive view to the city. The primary design tenet is that the project reflects a level of well as the high property value.

The design objective was to create an integrative relationship between structure and context, and to optimize the site's particular assets

CHA RISMA

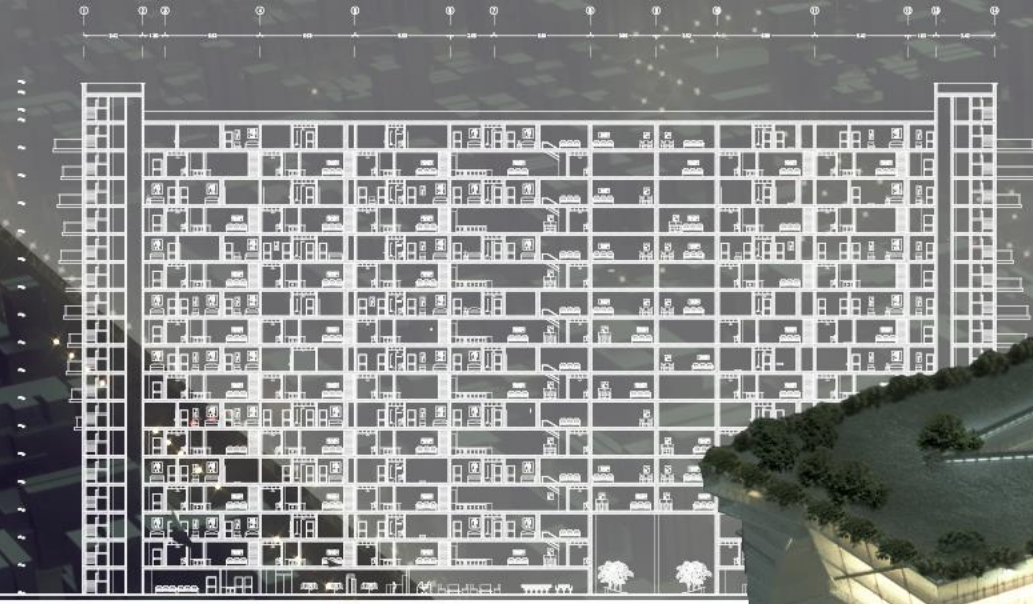
RESIDENCE

This project was designed for Architectural design 5

Considering the importance of applying the new energies in contemporary architecture and paying attention to the urgent need for efficient use of energy in my country today, this project is proposed to create a space for life and to improve its quality on one hand and to provide signs and patterns for the future life on the other hand

20
18





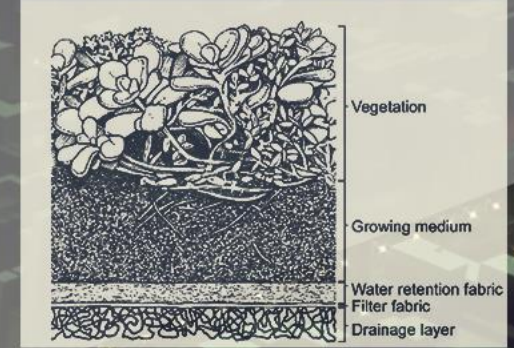
Sustainability in CHARISMA residential green towers:

Trees and green spaces will be added to the terrace as well as the roof top. Planting trees and green spaces on the terrace increases natural ventilation and decreases the usage of ventilation systems.

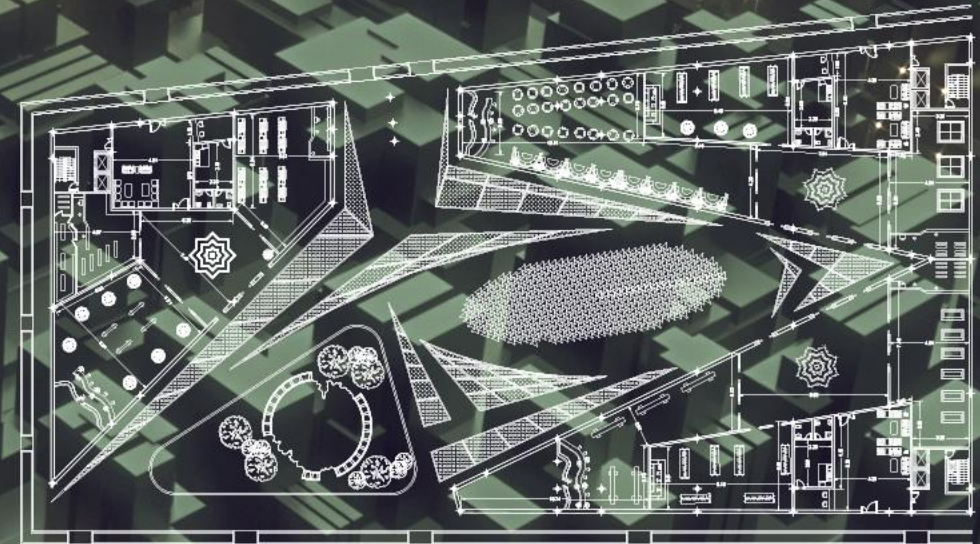
Each tree monthly absorbs 0.7-1.1 kg of carbon dioxide. In this project about 220 trees are intended on the terrace of residential units that absorb monthly an average 200 kg of carbon dioxide and Green space of floors decreases the ambient temperature about 3°C in summer.

All units are intended to have their own cultivable green yards which will help to prevent the noise from the living spaces.

Green roofs are one potential method to counteract the destruction of natural habitats as we further our built environment. In this project, we have identified environmental benefits that green roofs can provide such as stormwater retention, stormwater runoff delay and rate reduction, increase roofing membrane life, shading and insulation benefits, biodiversity and habitat, aesthetics, and control of noise and air pollution.



Cross-section of representative extensive green roof system

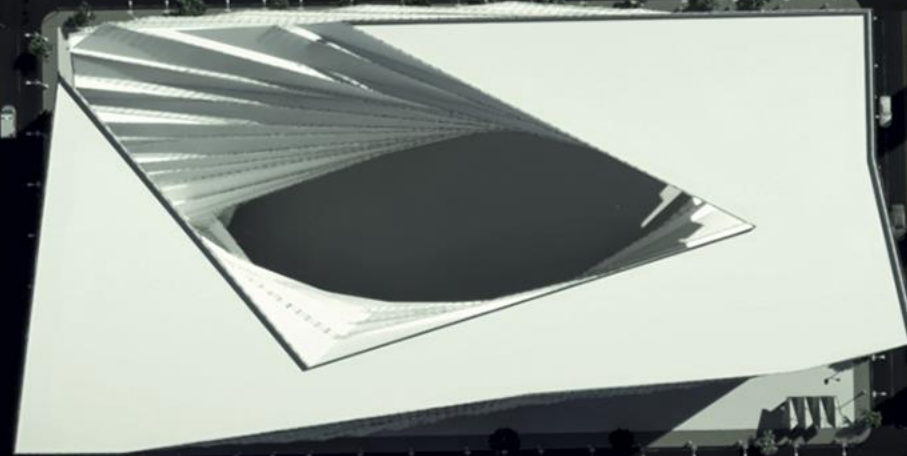


A wide range of facilities are offered at the basement of the project. Including: business units (bank, hypermarket, travel agency, art gallery and flower shops, etc.), Kindergarten with Private Courtyard, Sports and fitness complex, pools – sauna, Jacuzzi, walking Path, thematic gardens and Business and administrative spaces that are separated from residential areas.

Using solar lights in the landscape to obtain electricity without paying. Solar landscape lighting is a cost-effective and eco-friendly way to enhance gardens and walkways. they also have a very limited maintenance.



The project is trying to establish a relationship between the building and its context, the artificial and the natural, hoping to reflect a facility that maintains a dialogue with its surrounding landscape while exploring technological solutions. This responds to a functional program with appropriate solutions while simultaneously introducing differentiating factors that make the architectonic object a contemporary and innovative proposal capable of ensuring its status as a benchmark in energy efficiency and sustainability.



One of my main goals during the design process was to predict sustainable materials for the construction process. Using natural materials (green materials, paints with no volatile organic compounds, recyclable plastics, natural gypsum and mineral products) has an important role in decreasing air pollution in interior spaces. As well as Using double skin façade (mobile louvers) for trapping heat in winter, controlling radiation in summer



GLASS CUBE

I designed this building in order to appreciate the concept of “form follows function”

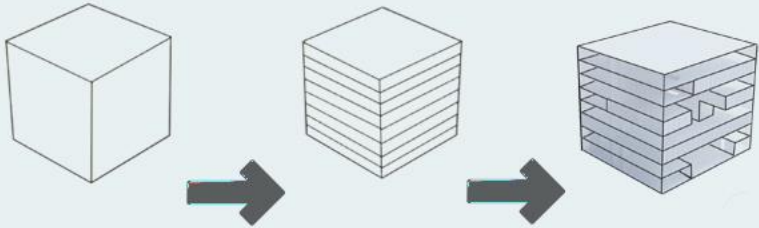
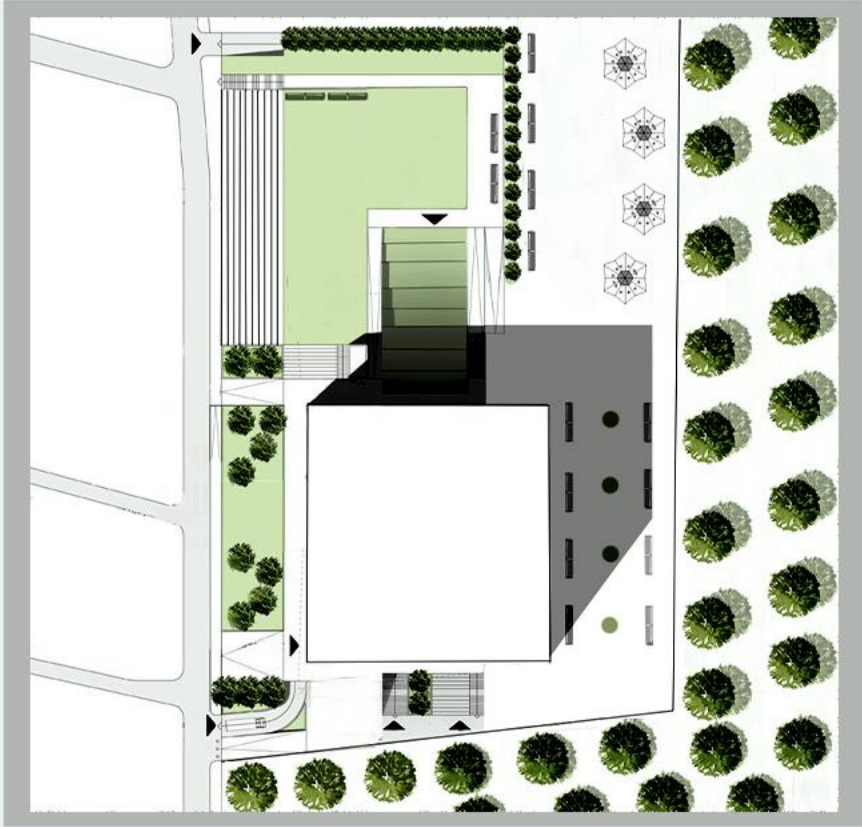
The design principal aim is to create a new, open and welcoming community space, high lighting and creating a strong contrast with its existing context.

20
18

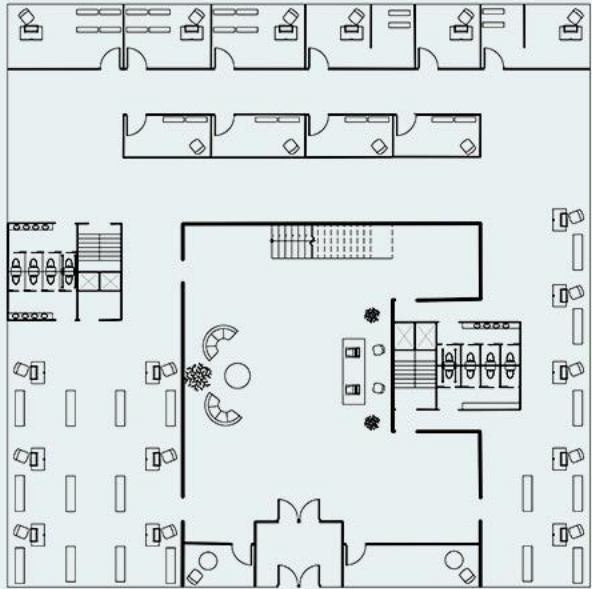


This cubic architectural design is more for those who are interested in simple and compact spaces, just big enough to provide all the necessary things someone needs. this simple geometric structure will definitely provide a modern way of living without taking up too much space.

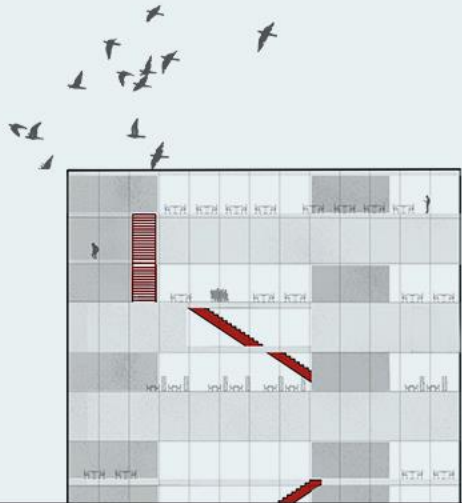
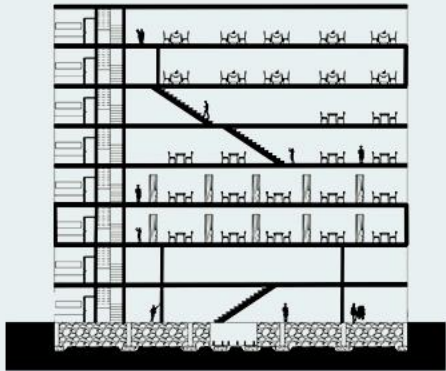
The site is located in the middle of a park and the site plan is designed as a gathering place for people. Using vegetation, stairs and sitting places people can rest while they are watching the connections inside the building.



The main purpose of the project was to design a building that people could see the connection of different parts of the building from outside. Therefore I designed these parts inside a huge glass cube which allows people to see inside of the building.



In today's world More and more people are becoming interested in other cultures in addition to wanting to share their own. Cultural centers are a prime way to bring communities together in their learning, which makes it more enjoyable and often times, even more helpful! Read on for a few ways these centers can benefit your community



APOLLO

MUSIC VENEU

Bachelor's final thesis project

A music venue is any location used for a concert or musical performance. Venues can play live music, recorded music, or a combination of the two, depending on the event or time of day. The concept of music and architecture is creating architecture, shapes, spaces, interior design that have unique and en- thralling musical moods and conceiving sound experiences that touch the soul. My main goal in this project is to design a building to attract performers and audiences of all ages, backgrounds and interest, to a bustling, all-day public space where everyone feels welcome, in a building to be proud of.

20
18



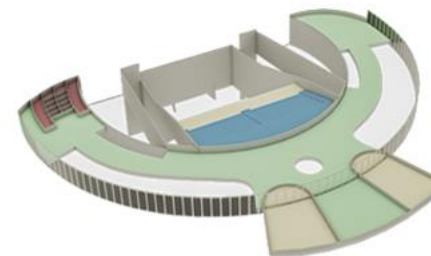
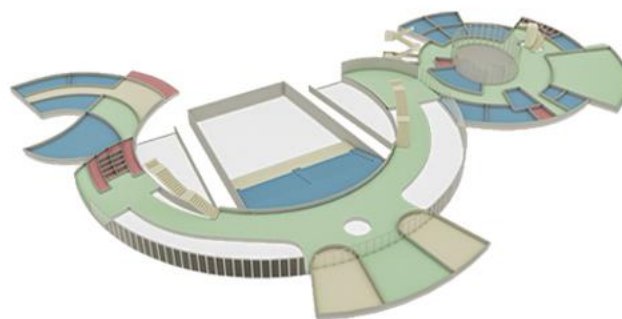
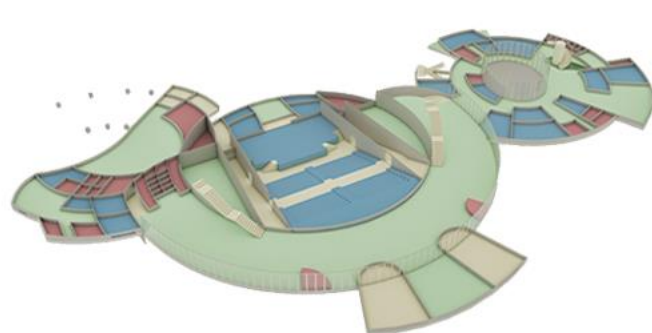
The Apollo music venue combines architecture, program and urban development into a specific entity, suitable to this particular location.

Each nation has its own ideals, which are the mission of culture to represent them. In this process, architecture and music, which originate from the culture of each region, play a crucial role. All the arts are in common abstract and abstract in order to open the door to beauty. Unfortunately, today in architecture and music, in many cases we are witnessing the disadvantage of these two precious artworks that are far from the notions and values of this art. Most of the products are non-durable. The lack of appropriate training, production, and publication can be one of the causes of this unplanned situation. Hence the decision to design a suitable and professional space for training, making and presenting musical works in the form of a "music house". The features of this project include focusing on the form and size of the building. Also, using a pattern and highlighting it, then expanding the artwork based on it, creating a sense of trust and trust in the original Iranian music using the "Net of Witness", attempted to create an authentic form and atmosphere that Very musical and architectural similarities like "rhythm," "symmetry and balance," "repetition," "rest," "unity at the same plurality," "climb and descent," and so on.

Its location in a densely urban area prompted me to focus on ensuring that the venue contributes to the local community by encouraging public engagement with its spaces and facilities. My most important question before starting the Royal Arena project was, How do we design the good neighbour for this area. by introducing various plazas and areas for socialising around its perimeter.



It is hoped that the combination and design of the Apollo music venue would create emotional and emotional environments that stimulate sense of belonging while at the same time making it profitable. People living and working in the neighborhood are encouraged to use these public spaces, as well as the surrounding plaza, when the building is not in use. The Apollo music venue's exterior design is also intended to present a more transparent and welcoming presence than typical venues, with the glazed surfaces and slatted sheath allowing views inwards and outwards. Since the Apollo music venue is a local building, it was important to us to design it as an aesthetic contribution to the area, and not just a massive concrete block like other venues tend to be.



- Gathering Space
- Core Area
- Transition/Threshold
- Support Structure

It is made up of three educational spaces, production and live performances, each of which is of great importance for the creation of a genuine and enduring musical work. With huge cosy gathering spaces with natural light and conducive



Every façade tells a story. Whether built to embody solidity, transparency or ambiguity, a building envelope is the medium through which we engage with architecture. Façades are also the primary elements mitigating surrounding conditions of light and atmosphere. Together, they give space definition

An aerial photograph of the Ariya Museum, a modern building with a distinctive, undulating, metallic, scale-like roof. The building is nestled in a landscape of tall, dry grass and some trees. The sky is filled with heavy, dark, dramatic clouds, and a small flock of birds is visible in the upper left. The title 'ARIYA MUSEUM' is overlaid in large, semi-transparent grey letters in the center of the image.

ARIYA MUSEUM

20
20

Team members: Arian Golrokh Amin, Saina Moazami

Architects, cratsmen and other affiliates of architecture with full knowledge of the architecture's dicipline and their special innovations and inspirationsof religious beliefs gave iranain architecture an imortal glory. Architecture choose the best way of using the past solutions and create new ways to reach the objective



Modern Architecture

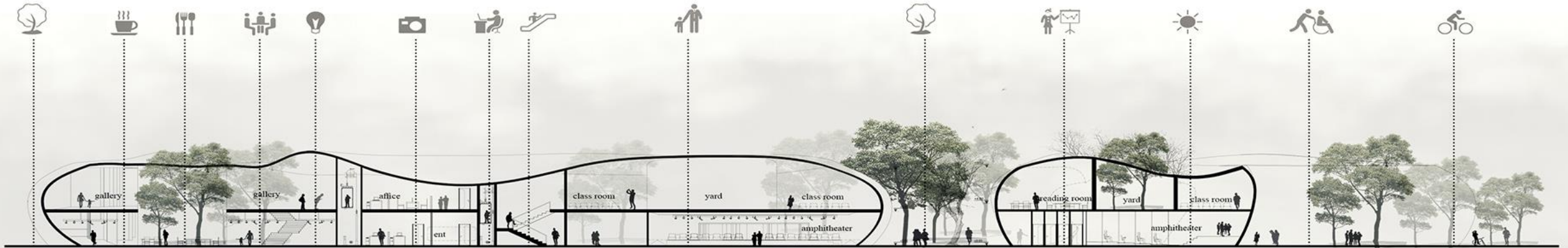
Iranian Architecture



into

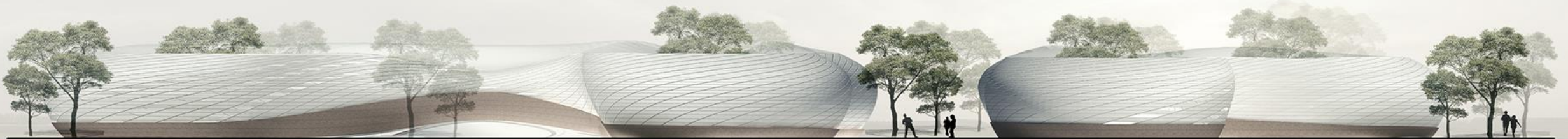


Traditional architecture surrounds modern architecture



section A-A

section B-B



east elevation

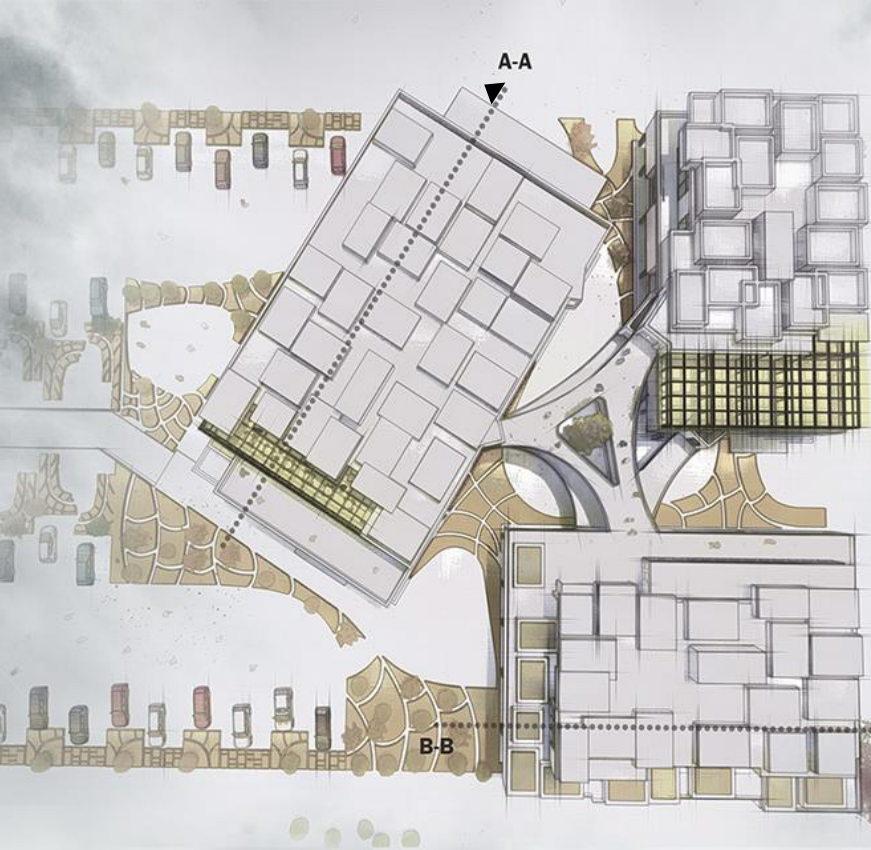
south elevation

ONYX

INVESTMENT CLUB

20
20

Investment and communications club is a structure that includes numerous subsidiaries with a variety of uses. this structure accommodates functions such as economic, educational , commercial , etc. inside itself. The concept of design derived from 3 parameters: The arches were halved to symbolize every human, A three handed conversation table that symbolizes communication between users ,The concept of up and down parameters signifies the up and down of economy and trade

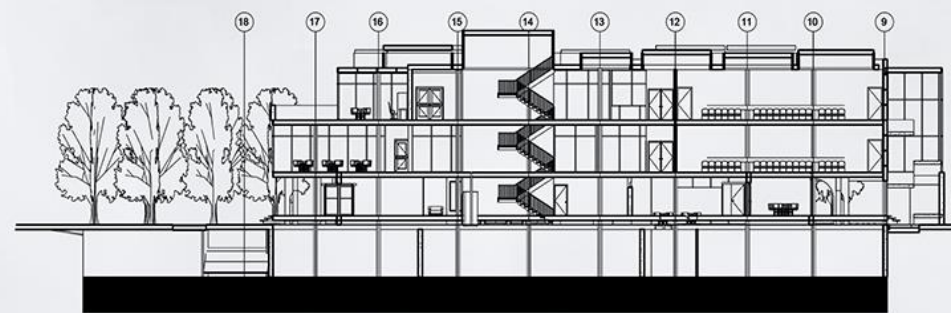


It's clear that the club is a special space for the gathering of the best groups of people in a kind of intellectual field with particular regulation and specific purpose. Investment and communications club is a complex with the mission of collecting and managing all Iranian clubs with the purpose of economic, communicational and educational development of business and capital owners as well as to provide a suitable environment for owners of the new ideas in the field of business manufacture. In general, the link between the idea owner and the investor and the creation of a comprehensive support and multilateral training in different aspects of economic and business for target groups are the duties of the club.

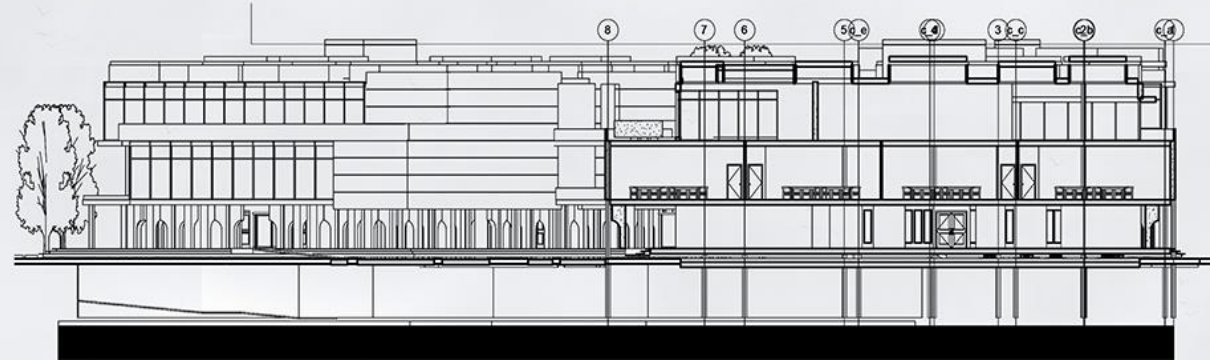
Center for study , reviewing , research and giving credit for new ideas and leading them to the executive stage is the features of this center



SECTION A-A

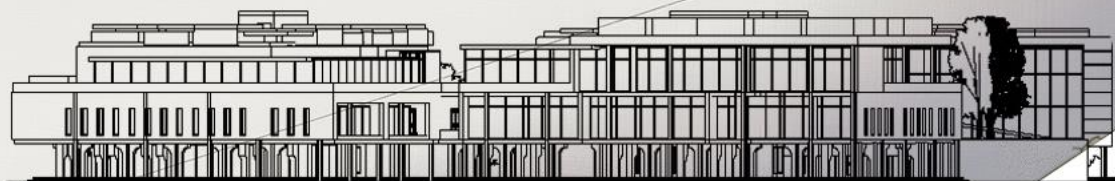


SECTION B-B

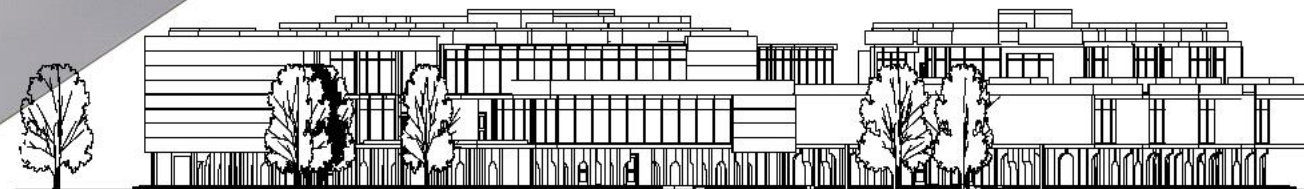


designing and development of this coherent and accountable organization for young people , business owners and capital is required in Iran.

due to the lack of a center for gathering and creating clubs ,such as investment club , electronic communications club and etc. as well as an official center for registering the ideas and multilateral supporting of them and rich intellectual room with experts in various aspects of the intellectual as well as politicians in the field of economics and business.



east elevation



west elevation

THANK YOU FOR YOUR ATTENTION