



# TABLE OF CONTENTS

|                                 |    |
|---------------------------------|----|
| OCA RALEIGH OFFICE RENOVATION   | 4  |
| ITAV LEADERSHIP ACADEMY         | 10 |
| ART2WEAR COLLECTION             | 16 |
| RALEIGH HYBRID HOTEL            | 22 |
| CASE STUDY: MOUNTAIN TREE HOUSE | 30 |
| VANCE COUNTY DSS                | 32 |
| MARTIN COUNTY CAREER & TECH     | 33 |
| LAUREL HILL COMMUNITY CENTER    | 34 |
| MACU HERITAGE HALL              | 35 |
| CERAMICS                        | 36 |
| FREEDOM BY DESIGN PROJECTS      | 38 |



## HI, I'M SAM

I'm a licensed architect, designer, and maker from Raleigh NC. I studied at the College of Design at NC State University to earn my B.Arch.

I am a baker, potter, amateur barista, plant enthusiast, traveler, and golden retriever mom.



In my time at Oakley Collier Architects, the firm leaders entrusted me as the Design Lead and Project Architect of their new office location in downtown Raleigh.

In the summer of 2022, OCA began renovations to a dated 4,600sf law office building, originally built in the 1950s and last renovated in the 1980s. By opening up part of the existing space and completely updating the interior, we were able to create a vibrant architectural office with room for growth. Through this enormous opportunity, I was able to design the space, assemble the construction documents, manage the construction, and curate all of the finishes and furniture for the space.





Furniture brands include but are not limited to:  
Bludot, Herman Miller, Allsteel, Gunlocke, West Elm, CB2



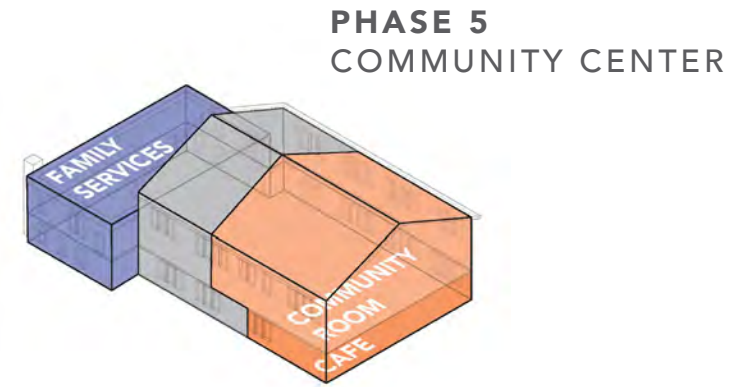
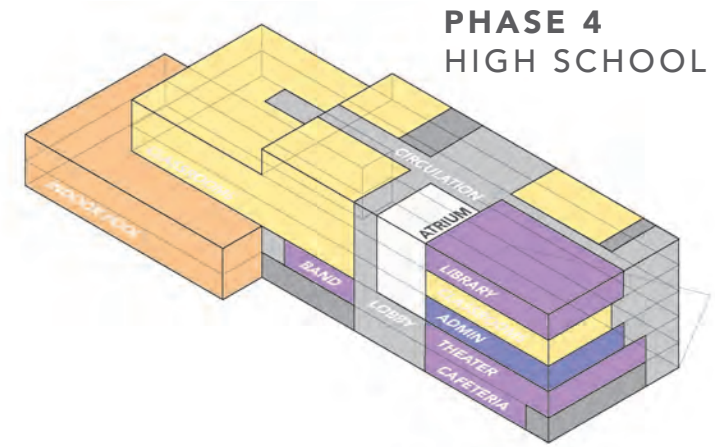
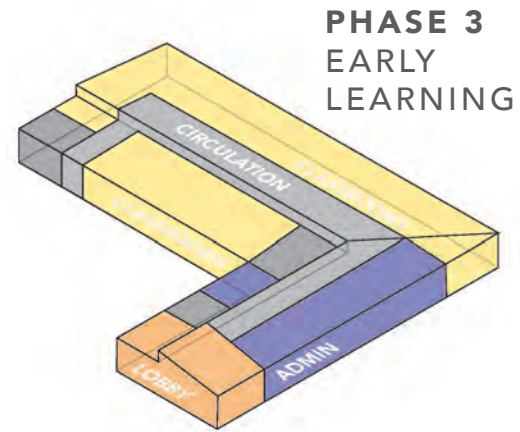
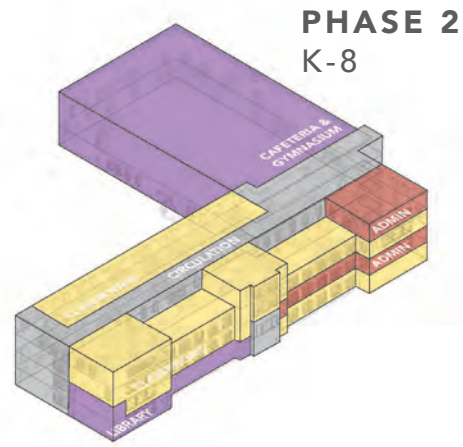
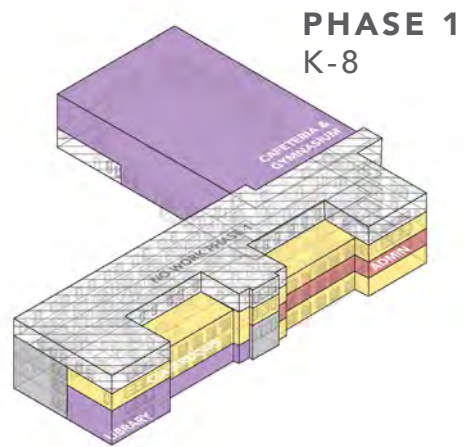
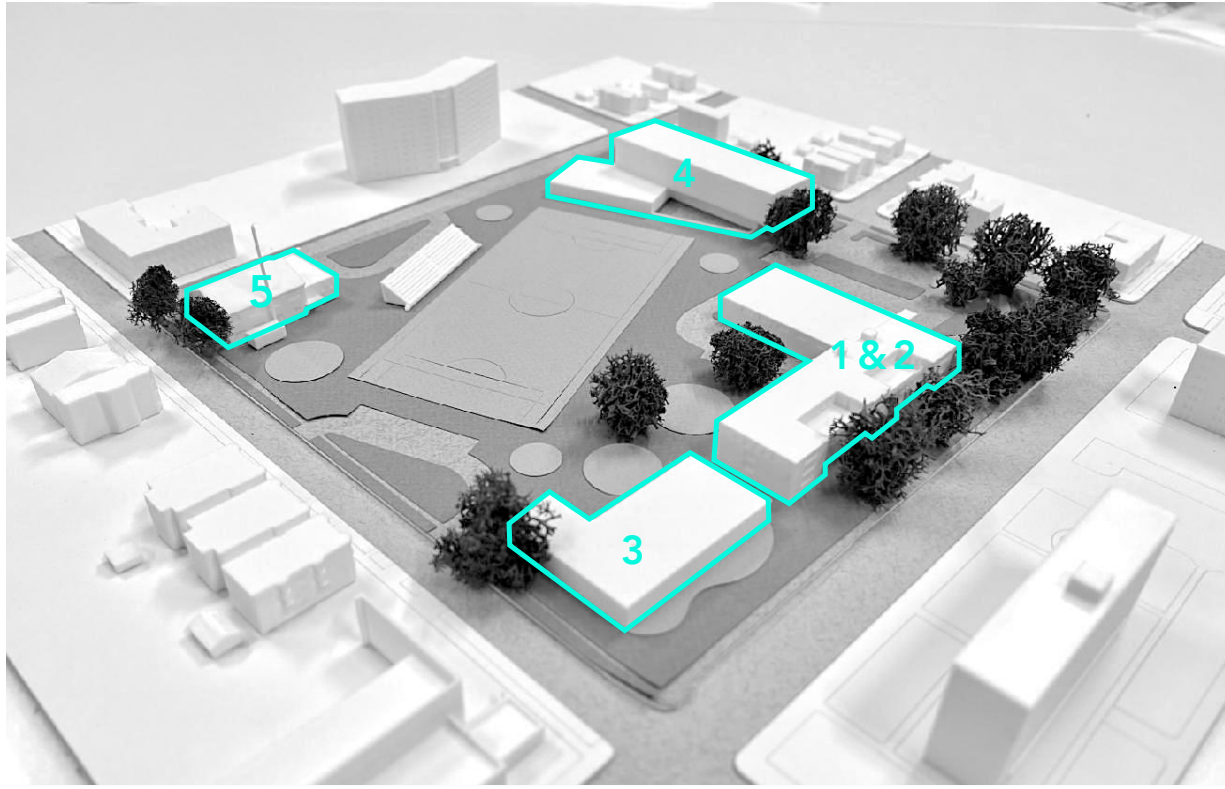


NEW OFFICE  
ITAV LEADERSHIP ACADEMY



It Takes a Village Leadership Academy is a nonprofit private school founded in Chicago by It Takes a Village Family of Schools. ITAV seeks to challenge the traditional education system and better communities through access to high-quality, culturally responsive education and life-changing social services.

In my time at NEW Office I served as the Project Architect on the ITAV Leadership Academy Master Plan and the Phase 1 Renovations. Working closely with the design team, a variety of consultants, and the client, we developed a Space Planning and Concept Design Plan for the the ITAV Bronzeville Campus, imagining what the future of the campus could be, and how it would be phased. Phase 1 of the campus consisted of a summer renovation to the Historic Hales Franciscan High School in Bronzeville. The renovation scope consisted of exterior and interior updates to re-brand the school for the incoming school year, restroom upgrades, accessibility upgrades, updated finishes, and new furniture & millwork. As Project Architect I served a vital role through Pre-Design, SD, DD, CD, & CA phases of the project.

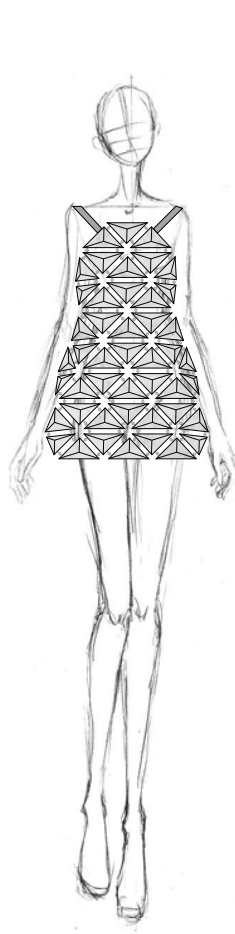
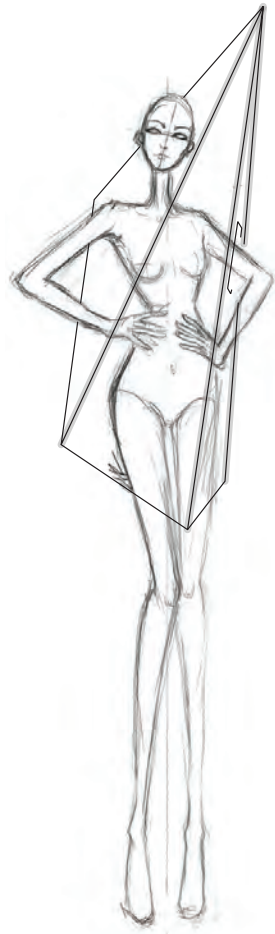
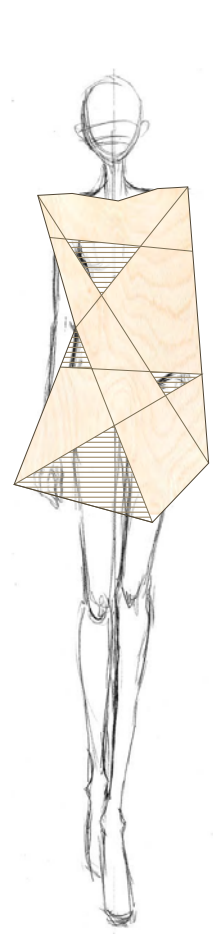
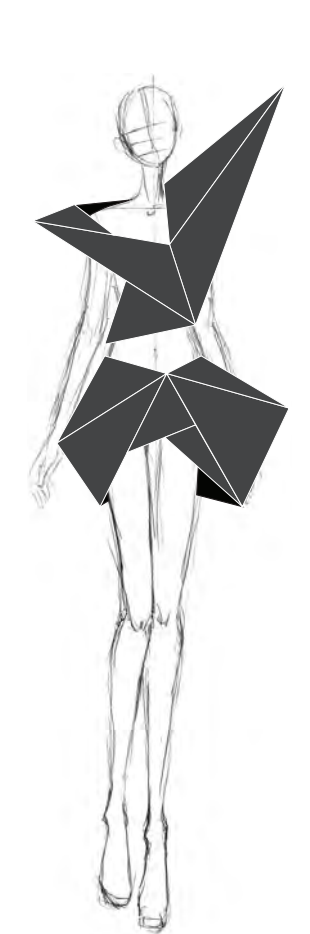




PHASE 1 RENDERINGS - RENOVATION OF EXISTING BUILDING



After being encouraged to participate by our swing studio professor, Justin LeBlanc (of Project Runway) , Cameron Elliott and I were selected to be apart of the annual College of Design fashion show, Art2Wear. We entitled our fashion line, Arc2Wear, as we wanted to create a line that was connected to our backgrounds in architecture. Each piece is not only inspired by an architectural image, but also constructed out of architectural materials such as mat board, wood, porch screen, concrete, and plexiglass.



GRAY MATTE-BOARD

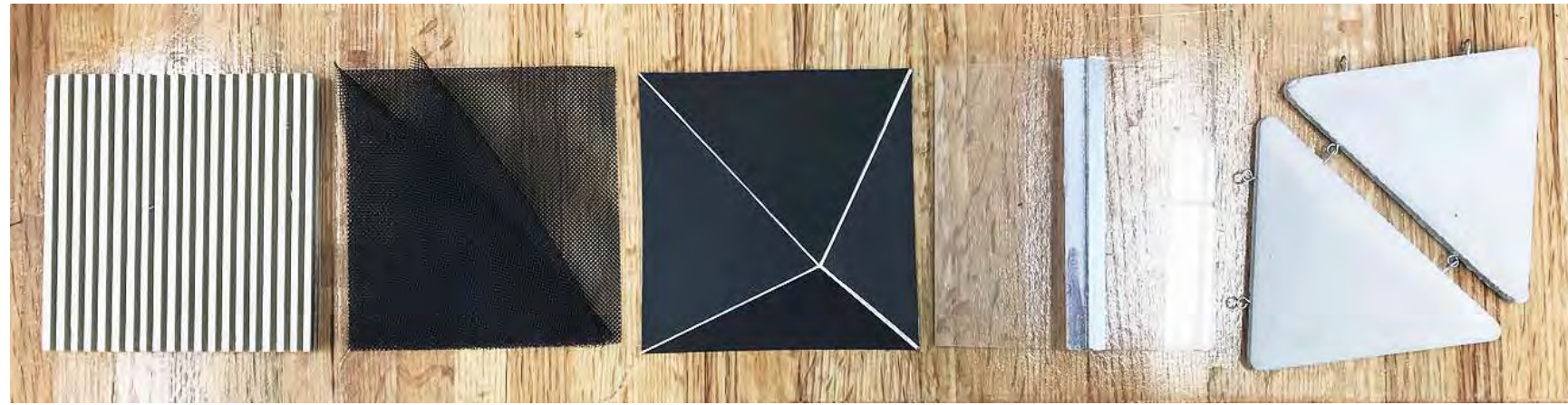
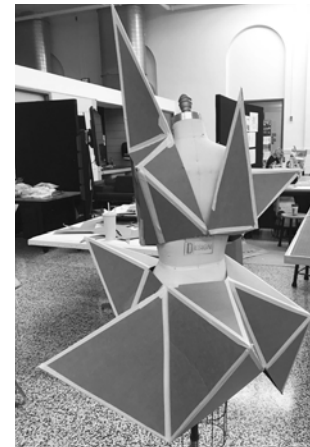
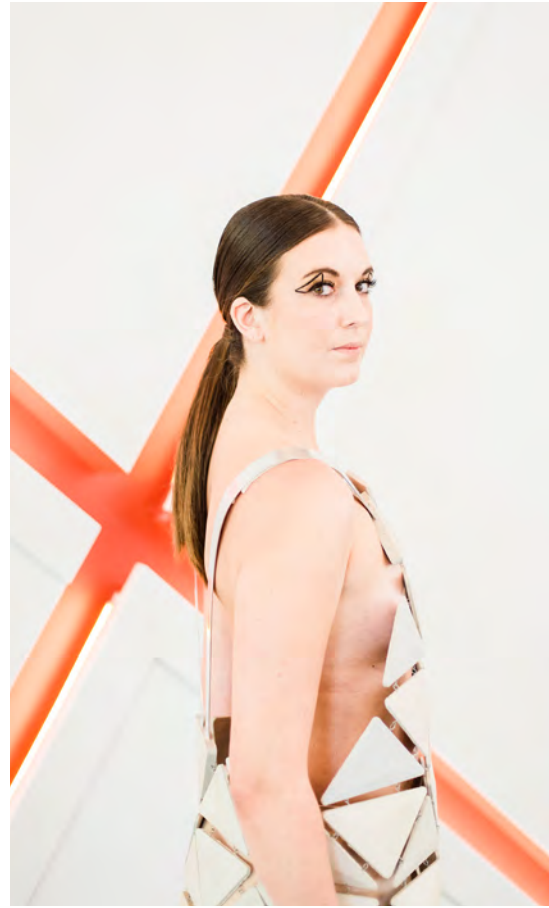
PLYWOOD

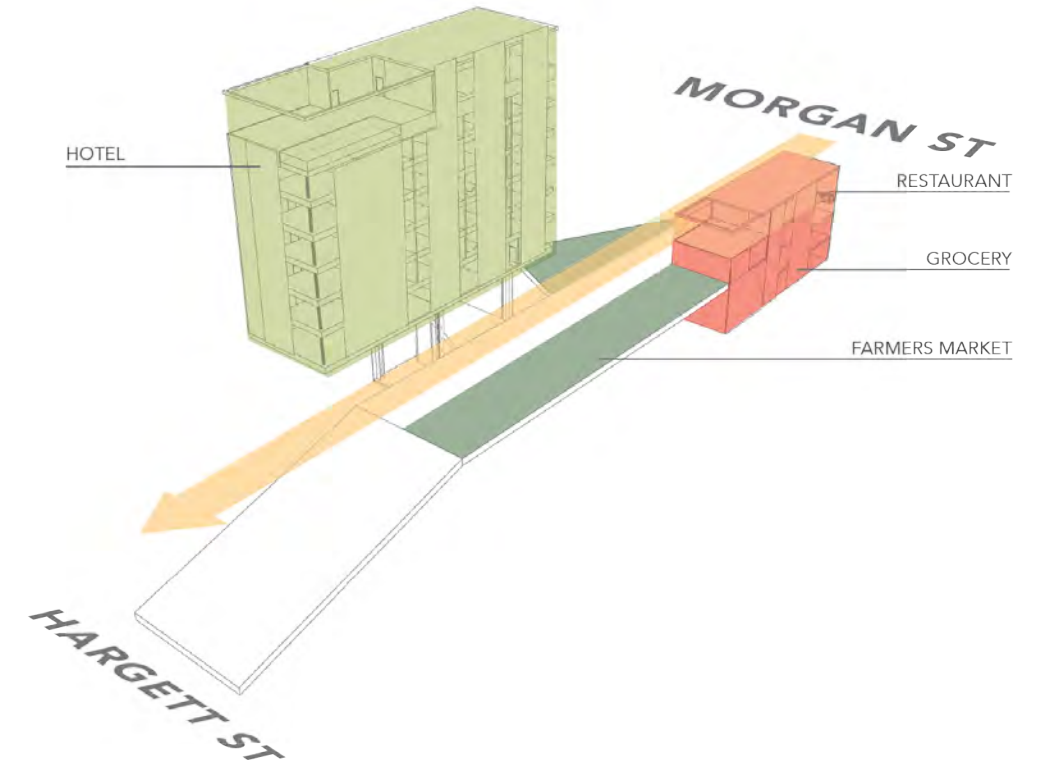
PLEXIGLASS

PORCH SCREEN

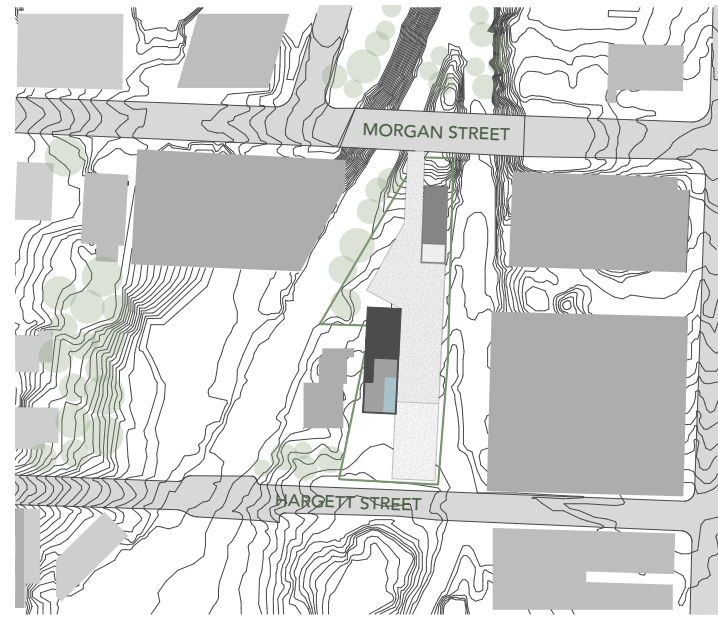
CONCRETE



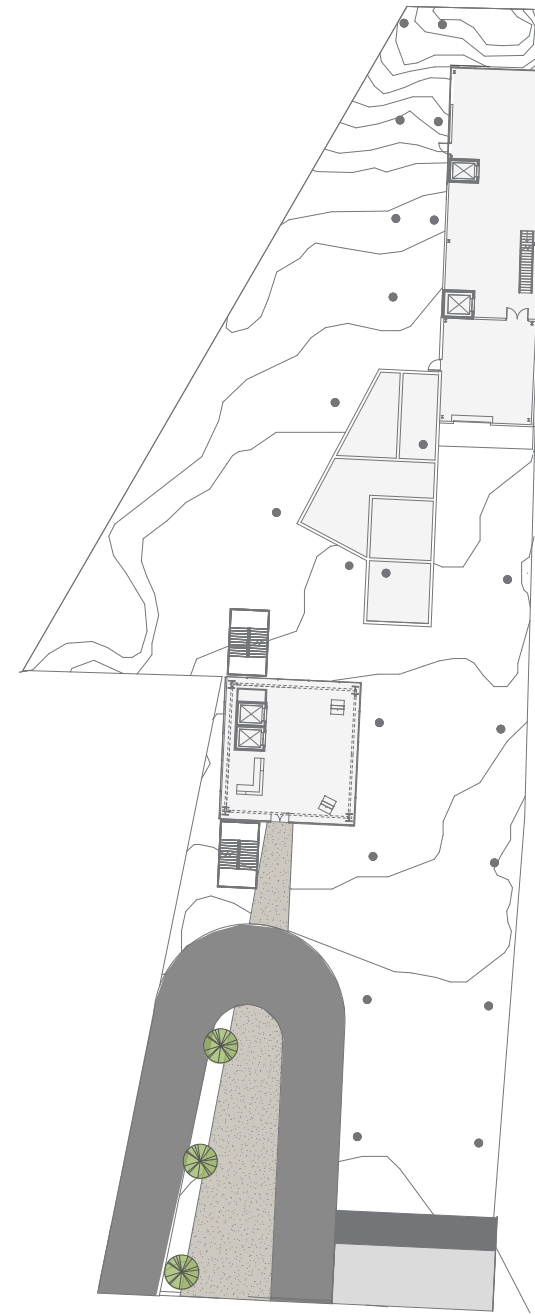




This mixed-used Hybrid Hotel was a project completed during my 5<sup>th</sup> year. The program combines a hotel, farmer's market, and a grocery store. By connecting Morgan Street to Hargett Street with a ramped bridge, I was able to create a public space to house a farmer's market. The hotel is then lifted up above the public space and away from the train tracks, using a cantilevered steel structural concept involving several tension members. This provides a unique form, adding interest to downtown, and allows the hotel rooms to have the best views of the Raleigh skyline.



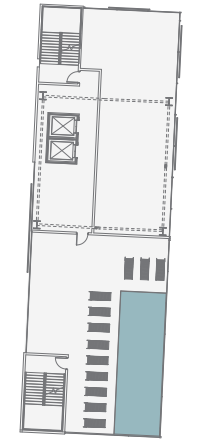
SITE PLAN



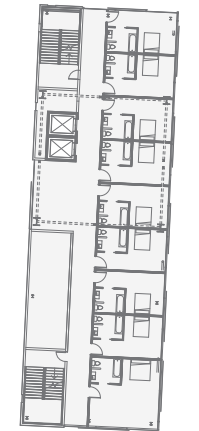
GROUND



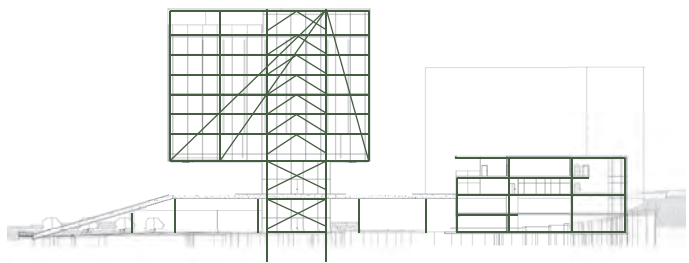
BRIDGE LEVEL



LEVEL 9



LEVELS 5-8







This was a Case Study completed in Frank Harmon's Tectonics and Craft course. We were assigned to study the architects Mack Scogin and Merrill Elam. We initially looked at their lives, to establish five qualities that inform their architecture. We then chose one of their works, the Mountain Tree House, and created a 1/8" scale model and a full scale detail mock up from that work, emphasizing those qualities.

*Partners: Nick Rossitch and Cameron Elliott*

MACK SCOGIN & MERRILL ELAM - ARC 302 TECTONICS & CRAFT  
CASE STUDY: MOUNTAIN TREE HOUSE



Vance County Department of Social Services is a renovation project completed in Henderson, North Carolina. The facility was a huge upgrade, more than doubling the square footage for the Social Services Department. By upfitting an abandoned Middle School, we were able to convert the building into a large open office space, with a public lobby, meeting spaces, and visitation rooms. This project was much needed within the community of Henderson. As a Project Designer, I was able to program and design the space and finishes, work directly with the client, assist in curating the furniture, and assist with Construction Administration.



Martin County Career and Technical High School was a renovation project in Martin County, North Carolina. The existing building was a portion of an empty strip mall. With a limited budget we were able to transform the space that fosters creativity and allows students to explore careers in Science, Technology, and Health. I served as a Designer on this project, selecting all finishes, and assisting in all furniture selections.





Laurel Hill Community Center is a new facility built for Scotland County, North Carolina. There was no nearby community center in the rural town, so this was a much needed project for the local residents. As the Project Designer I was able to design the building and its interiors, draft the construction documents, and assist with Construction Administration.

OAKLEY COLLIER ARCHITECTS  
LAUREL HILL COMMUNITY CENTER



MACU Heritage hall is a newly built classroom facility for Mid-Atlantic Christian University, located in Elizabeth City, North Carolina. The program includes a new administrative suite, classrooms, and science labs. For this project, I served as the Project Designer, designing the building and its interiors, and drawing the construction documents.

OAKLEY COLLIER ARCHITECTS  
MACU HERITAGE HALL





AIAS FREEDOM BY DESIGN  
COMMUNITY SERVICE PROJECTS



Freedom by Design is an extension of AIAS that strives to impact the local community through design-build service projects. In my time at NC State, I was on the FBD board for 4 years, I served as secretary and eventually Director. Listed below are the service projects that I participated in:

Living with Autism Play Structure - 2016  
(pictured on page 36)

Life Experiences Shade Structure - 2017  
(top left)

Tammy Lynn Center Concrete Water Tables - 2018  
(bottom left)

Playground for the Governor Morehead School for the Blind - 2019, still ongoing  
(not pictured)

THANK YOU!