

# PORTFOLIO

Parris Wright



# PROJECTS

## TABLE OF CONTENTS

01 RESIDENCE  
*KAVA MASSIH ARCHITECTS*

02 CLINIC  
*KAVA MASSIH ARCHITECTS*

03 GALLERY  
*UNIVERSITY OF WISCONSIN MILWAUKEE*

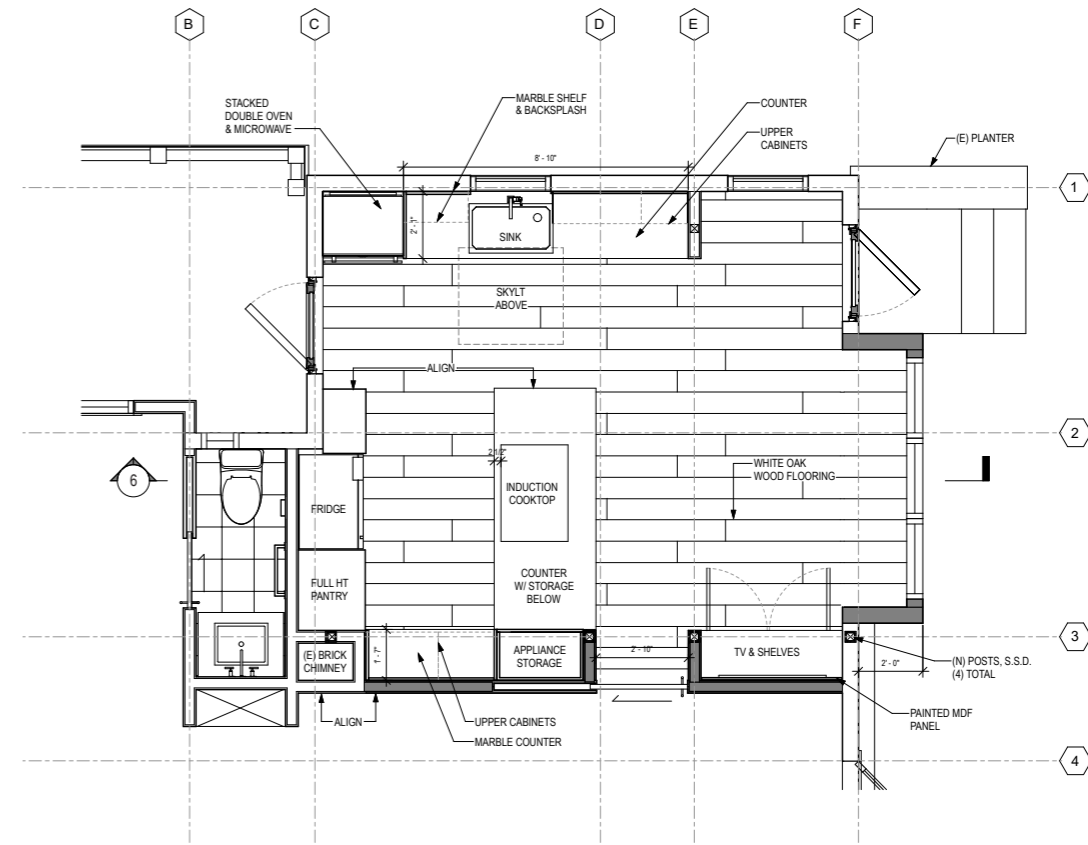


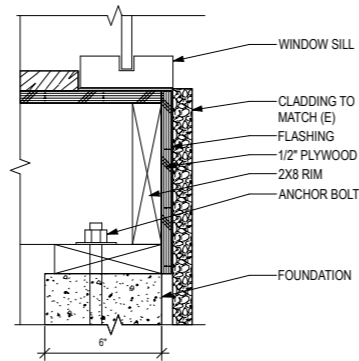
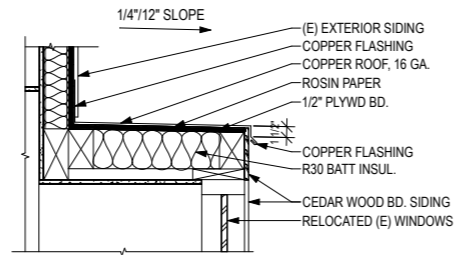
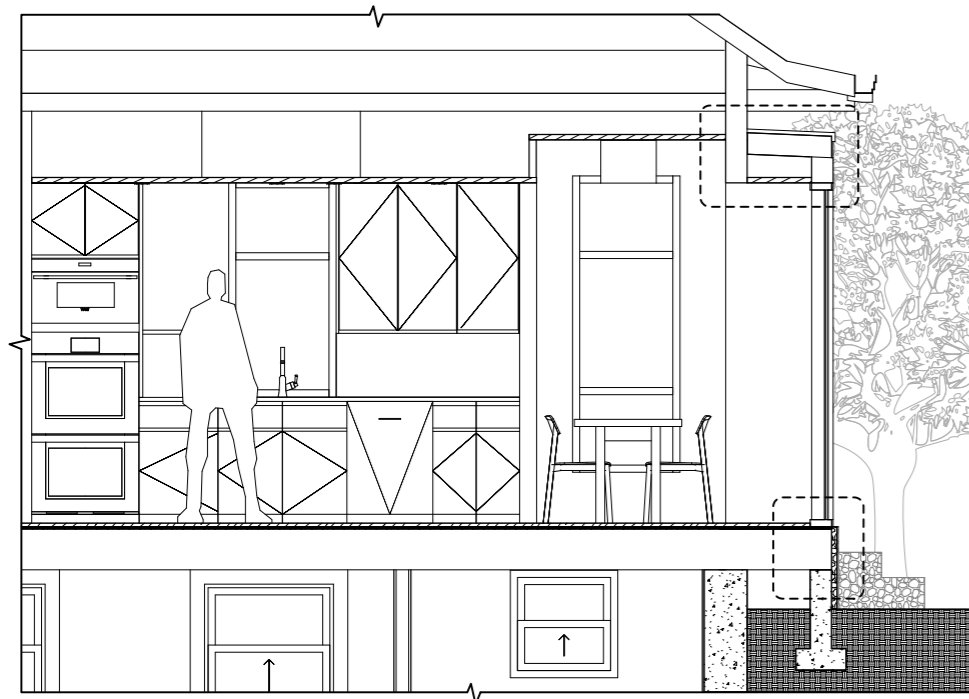
**GONZALEZ** | Residence  
 KAVA MASSIH ARCHITECTS  
 BERKELEY, CA | 2022

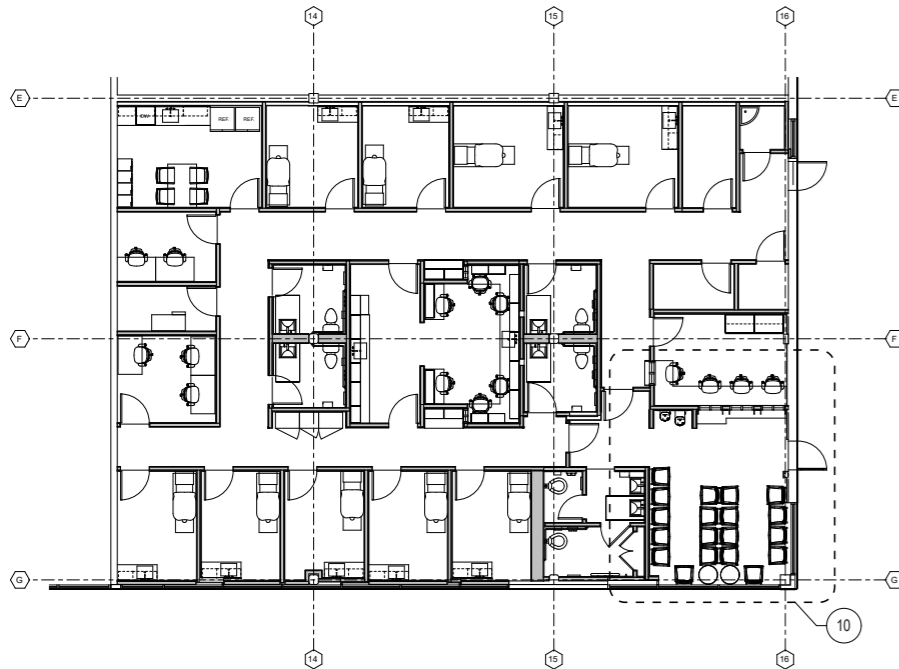
This project involves the renovation of an existing kitchen to optimize space for entertainment while maintaining functionality for its residents.

Ample natural light is allowed through the skylight, bay window and french patio doors, showcasing the forested open space to the north, east and west.

A kitchen island divides the space to separate the working areas from the entertaining space, providing ample storage and workable counter space without excluding the chef from the party.

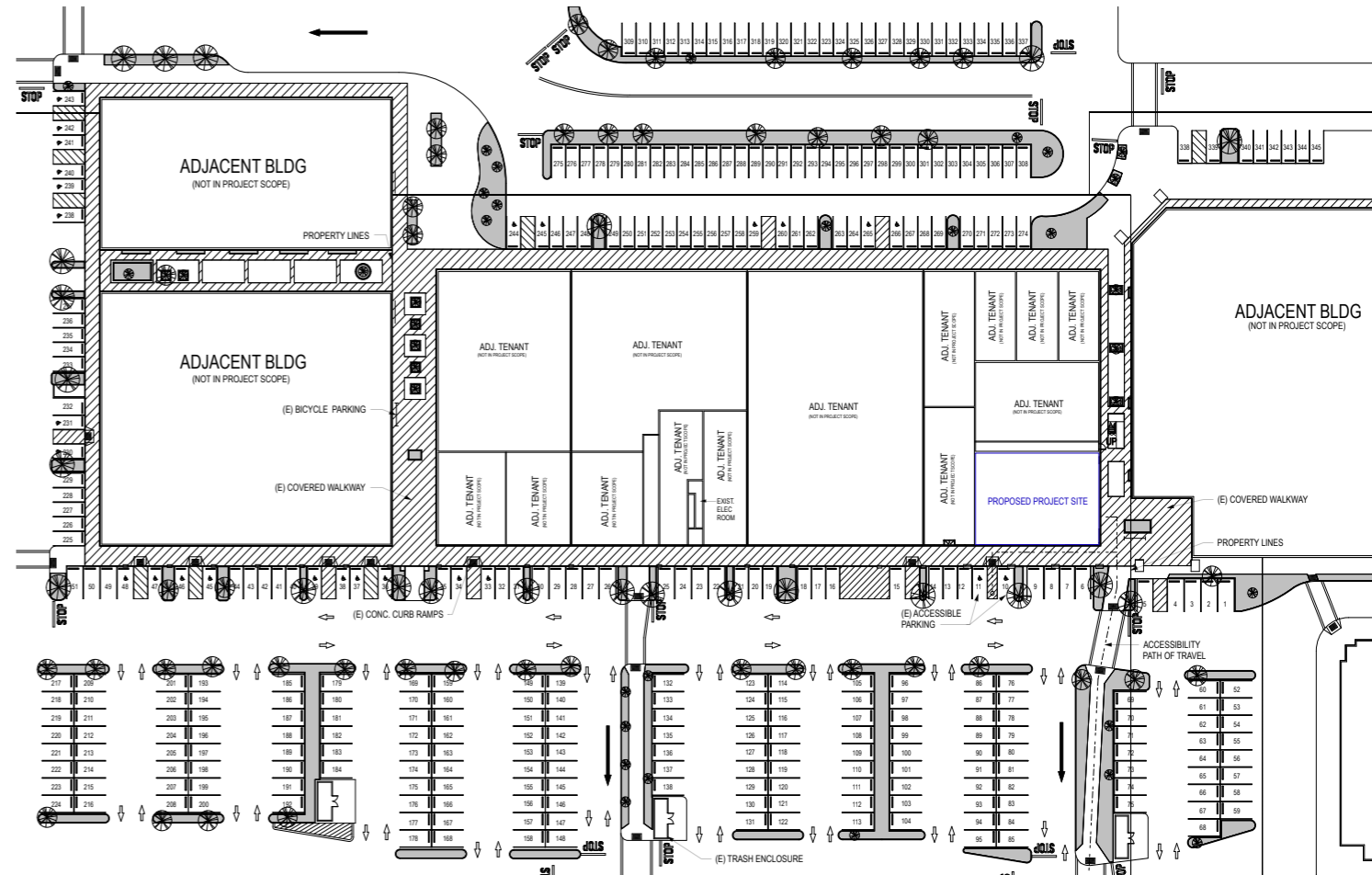


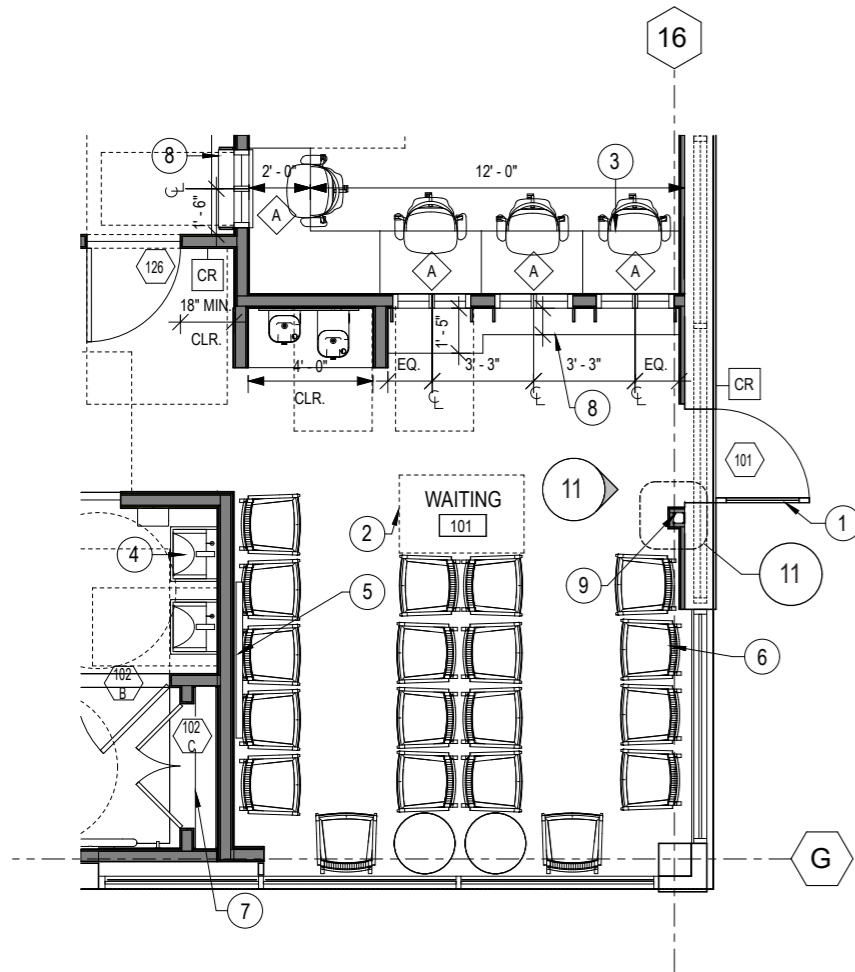




**Clinic** | Tenant Improvement  
 KAVA MASSIH ARCHITECTS  
 BERKELEY, CA | 2023

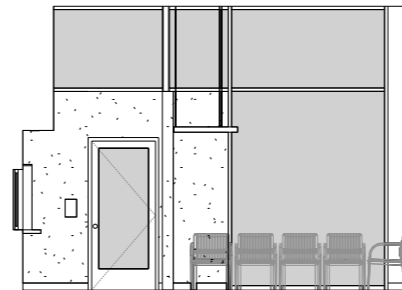
Once a bank, KMA was tasked with renovation of this 3,500 square foot space for the relocation of a small clinic. The process began with an extensive pre-design phase to utilize as much square footage as possible, while ensuring privacy, clear circulation, functionality, ADA standards & OSHPD requirements.



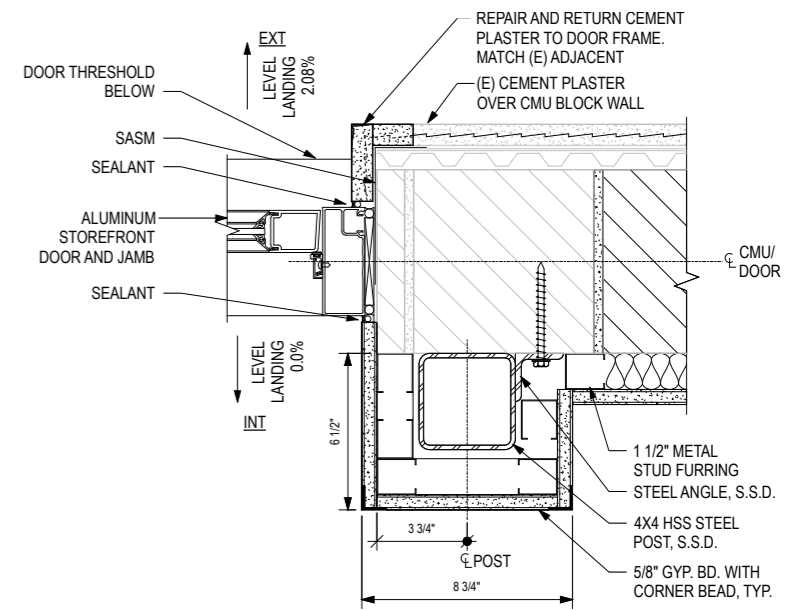


**Keynotes**

- ① DOOR, TYP. SEE FIN. SCHED.
- ② 30"X48" WHEELCHAIR SPACE
- ③ RECEPTIONIST'S DESK
- ④ WALL MOUNTED LAV. S.P.D.
- ⑤ WALL MOUNTED SCREEN
- ⑥ FURNITURE, TYP O.F.O.I
- ⑦ ADJUSTABLE SHELVING
- ⑧ TRANSACTION COUNTER
- ⑨ STEEL POST S.S.D.



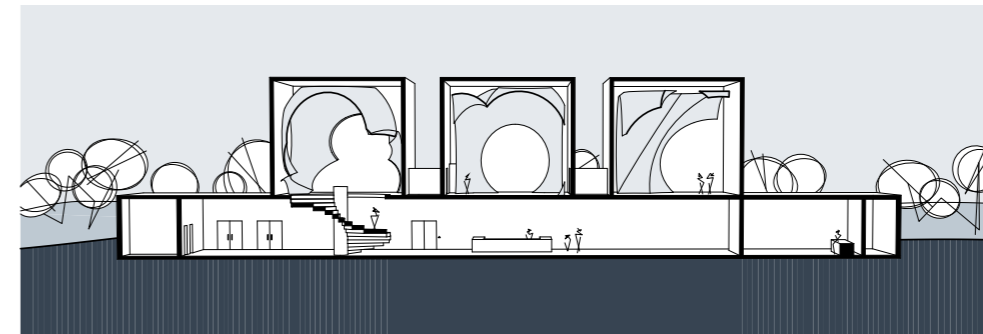
Supplemental structural details were required to support new openings in the existing CMU wall. Shown is the elevation and detail clarifying the connection between the new door, steel column, and the existing exterior wall.



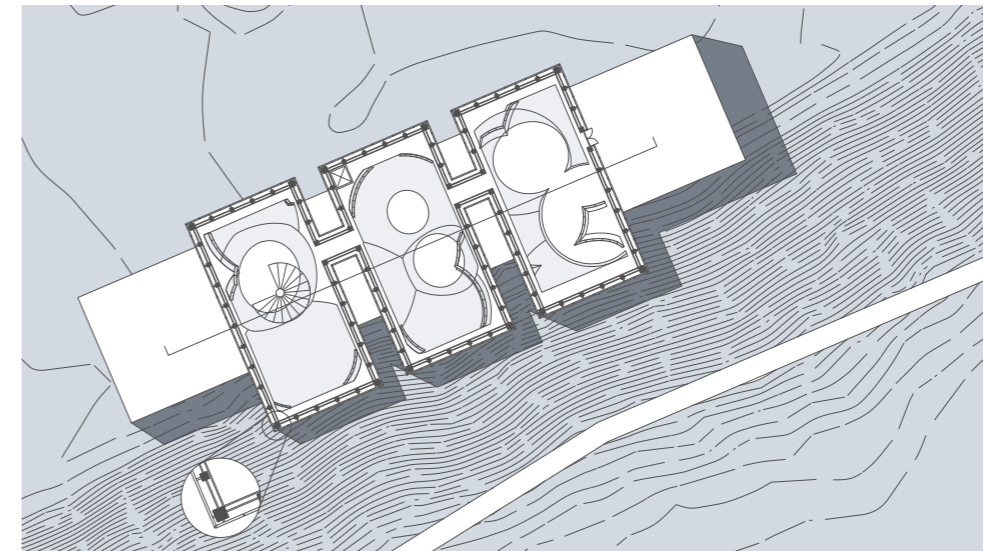


**L I G H T** | Student Project  
UNIVERSITY OF MILWAUKEE  
MILWAUKEE, WI | 2020

LIGHT is a project that experiments with natural lighting techniques for a gallery space. The outer shell is constructed of a LOW-E glass that will provide diffused light across the interior. This shell is held in place by a small grid frame, which also provides support for the sculptured interior. These undefined walls provide a unique walk through experience, and allow for unique options for displaying art.



Section



Gallery Plan



This project was accomplished and displayed using a combination of modeling techniques like cast concrete, 3D printing, photography, lighting, and the adobe products. The end product intends to show the project in a way that exemplifies the possible lighting opportunities from the sculptural interior.

