

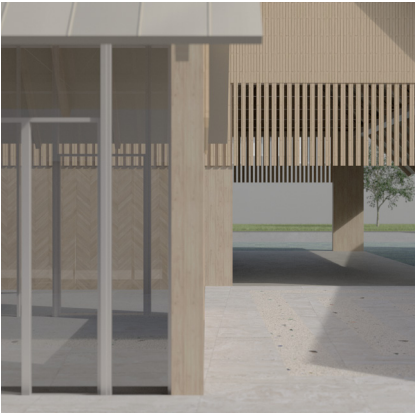


Xinyu *Vivian* Tang



2021-2024
Selected Works

Index



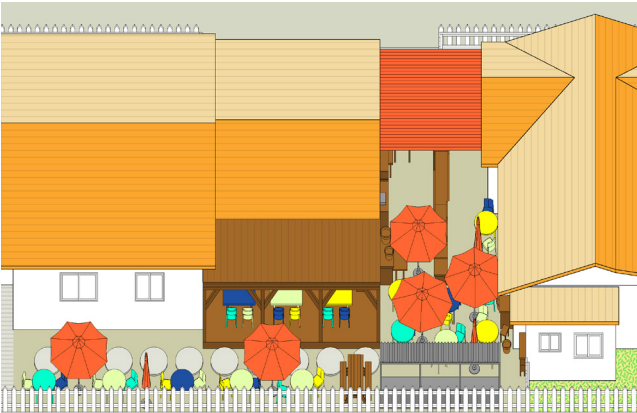
Ithaca Community College
Academic
Community College



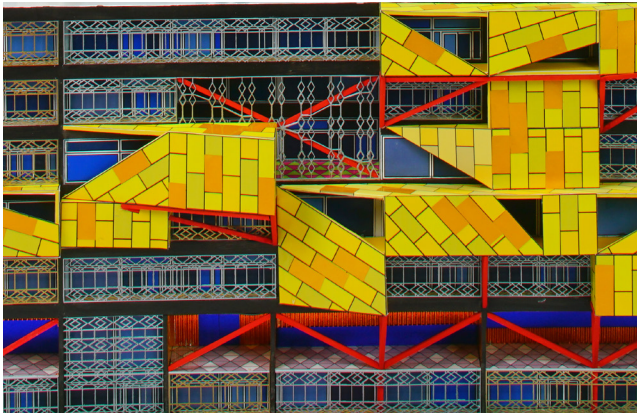
04 Seneca Falls Museum
Academic
Museum



14 Casa Migrante
Academic
Housing 26



Rewriting Exurbia
Research
Housing



36 Pigen Cage Office
Academic
Office 50

Ithaca Community College

Academic Spring 2024

Typology: School

Cornell University Gensler Visiting Critic Studio

Instructor: Róisín Heneghan, Ekin Erar

Location: Ithaca, New York, United States

Floor Area: 57,920 sf.

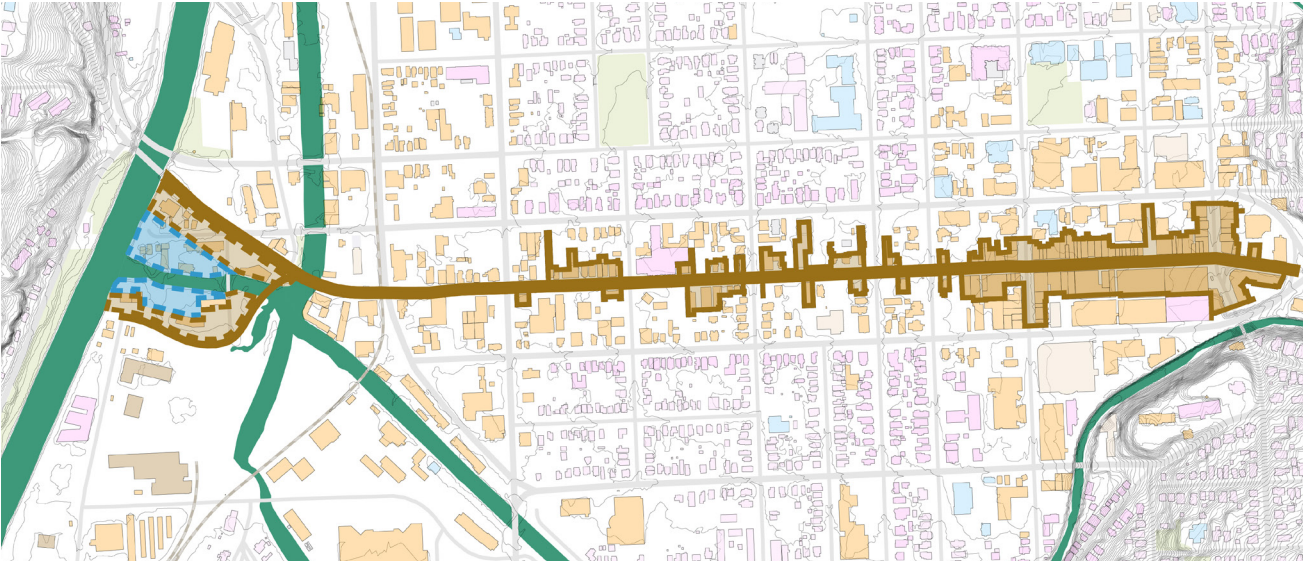
All designs and drawings done by author.

Nestled between Cornell University and Ithaca College and a several hours' drive from any major city, Ithaca is the quintessential college town, a place to study sheltered from other social and economic demands. Its economy, absent any other large employers, is therefore wholly tied to its educational institutions. Ithaca promote a specific lifestyle accessible only to students who that can afford to take on substantial debt, feeding inequity in higher education institutions and in the college towns that host them.

Through the design of a community college in Ithaca on the north and south river banks of the Six Mile Creek near the Cayuga inlet where there is no other place similar to the intimate water access that it provides, a new urban gesture with appeals of nature lures the pedestrian wonderers into the depth of exploration.



Urban Corridore Urban Activation Commercial Residential Civil Park Cayuga Inlets

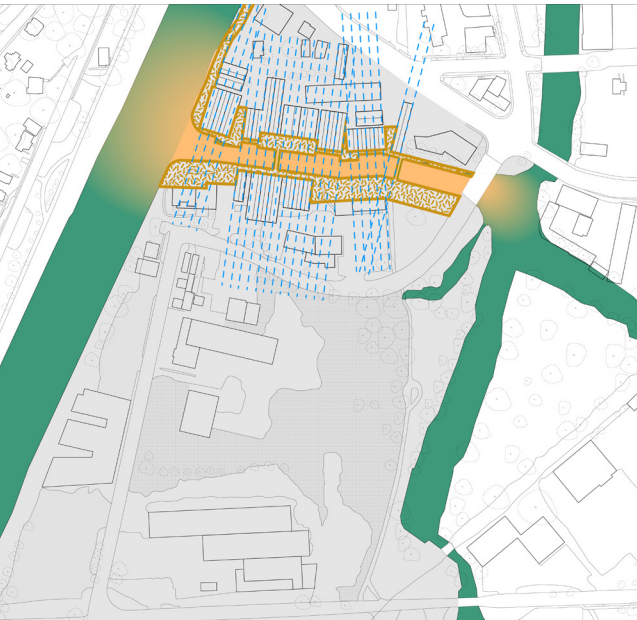


Northern Connection to Ithaca Down Town via West State Street

Ped. Bridge Urban Connectivity New Urban Rhythm Six-Mile Creek River Front Development Cayuga Inlets



Northern Connection to Ithaca Down Town via West State Street



Northern Connection to Ithaca Down Town via West State Street



Signworks Building and Waterfront Plaza



Storage Facility at the waterfront



Vcant Storage Facility at the waterfront



Storage Facility at the waterfront



Former Air Plane Factory in the South Bank



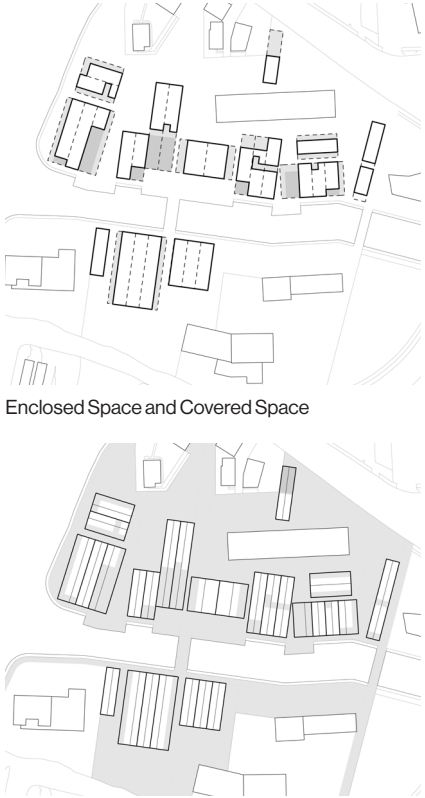
Law Firm in the South Bank



North Entrance Plaza from the Major Urban Corridor



Roof Plan



Enclosed Space and Covered Space

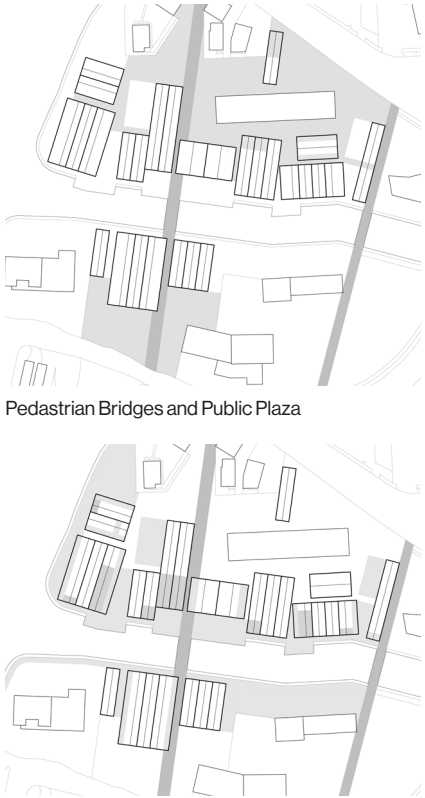
Penetrable Ground Plane



Enclosed Seminar Room, Covered Outdoor Workspace, and River-Front Community Plaza



Ground Floor Plan

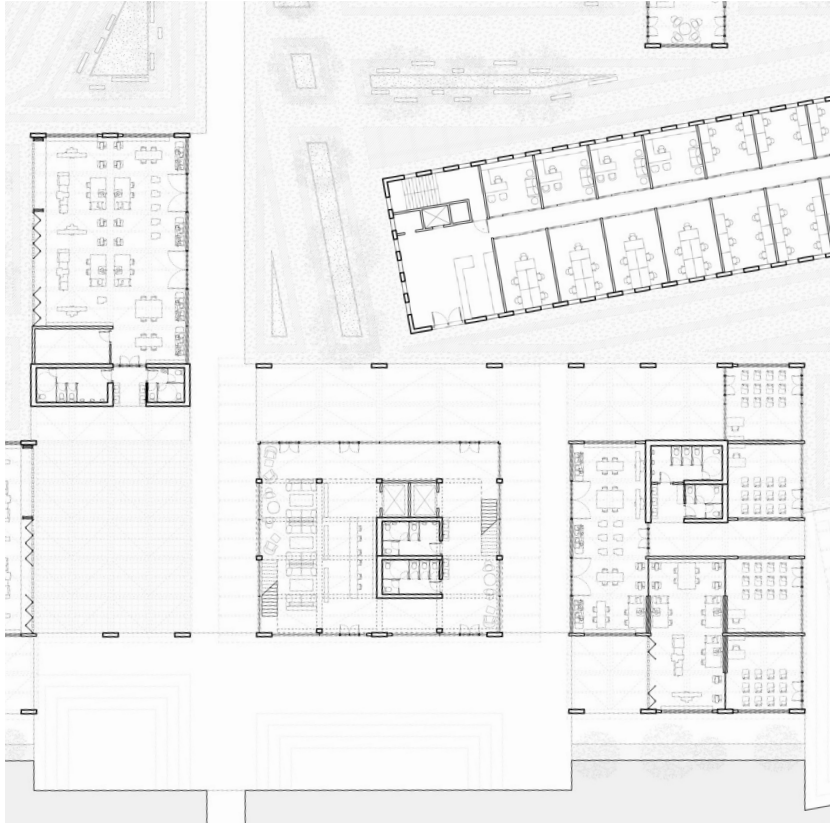


Pedestrian Bridges and Public Plaza

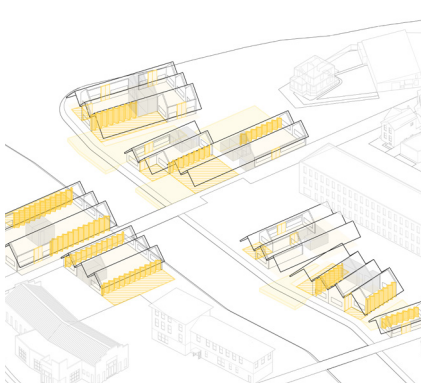
Pedestrian Bridges and Community College Plaza



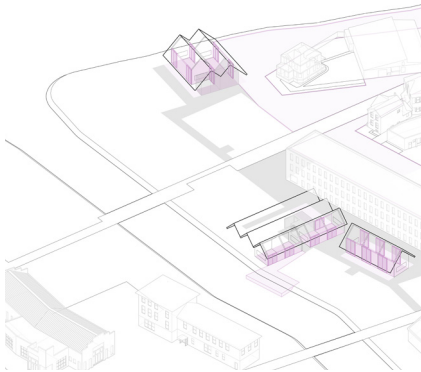
Bird's Eye View of the Community College and Public Space from the Urban Corridor



North River Bank Workshops and Seminar



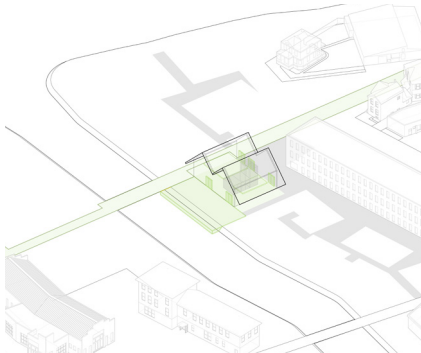
Wood Workshops and Outdoor Open Area



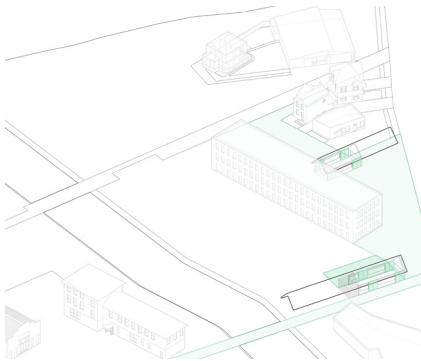
Seminar Rooms and Circulation



South River Bank Workshop



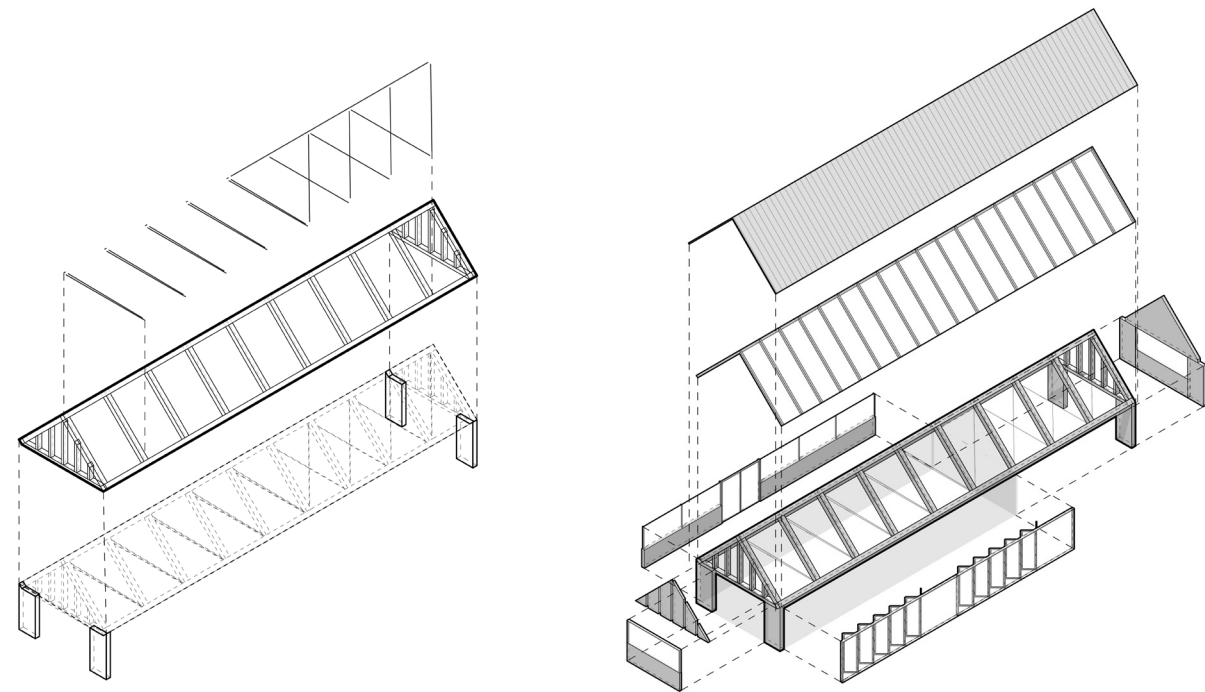
Library, Central Bridge and Public Space



Cafe and Public Plaza

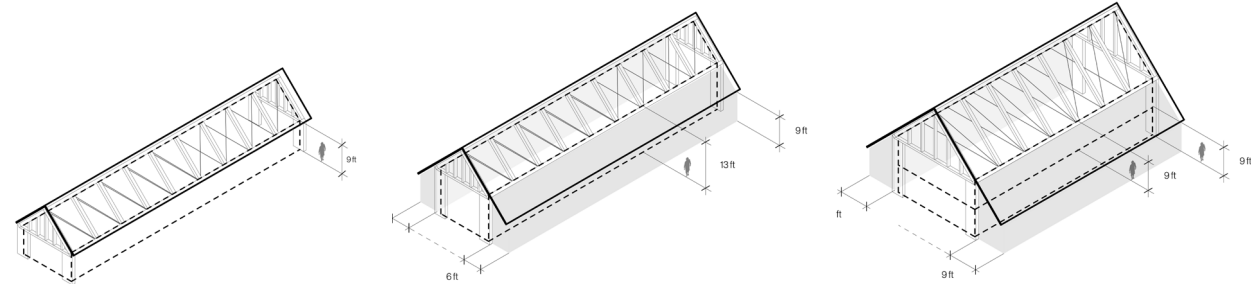


View of the Medium Size Workshops from River-Front Community Playground



Folded Plate Timber Truss and Column Unit

Building Envelope System



Basic Typology

Tall Shaded Typology

Double Height Typology



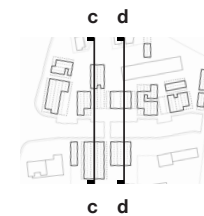
North River Bank Elevation a - a



South River Bank Elevation b - b



Small Wood Workshop Interior



Section c - c



Section d - d



Seneca Falls Museum

Academic Fall 2022
Typology: Museum
Syracuse University Comprehensive Studio VIII
Instructor: Terrance A. Goode

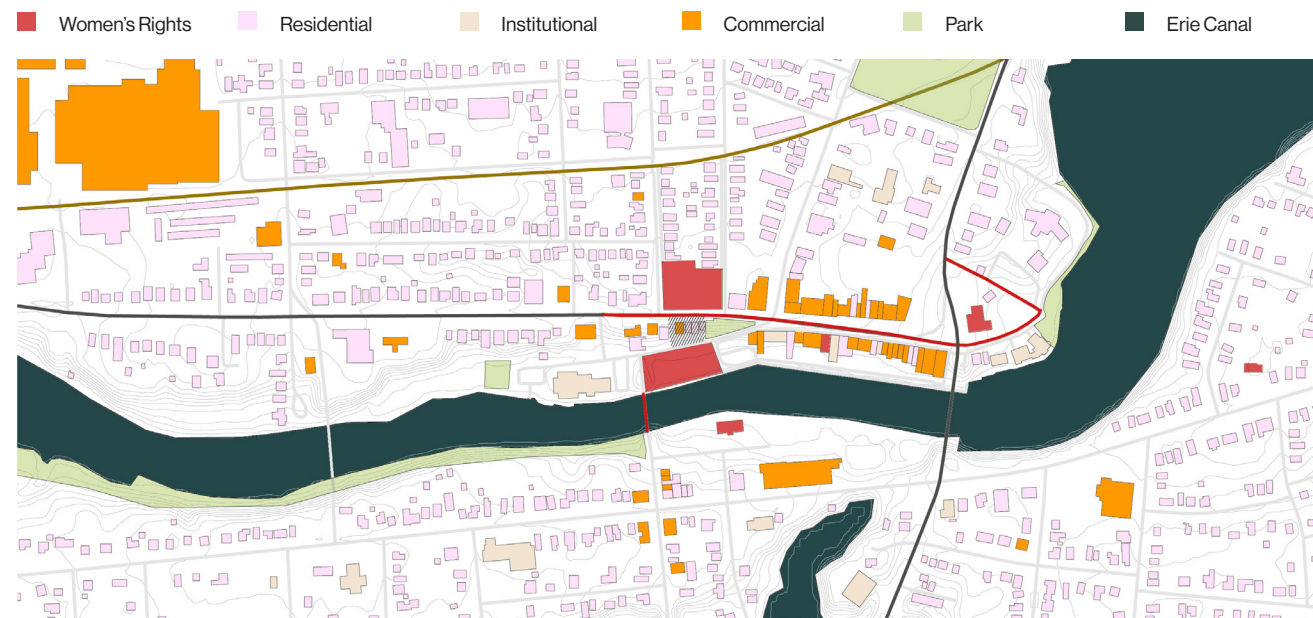
Location: Seneca Falls, NY
Area: 28,650 sf.

Designed in collaboration with Yi Zhang, revised by author.
All drawings done by author.

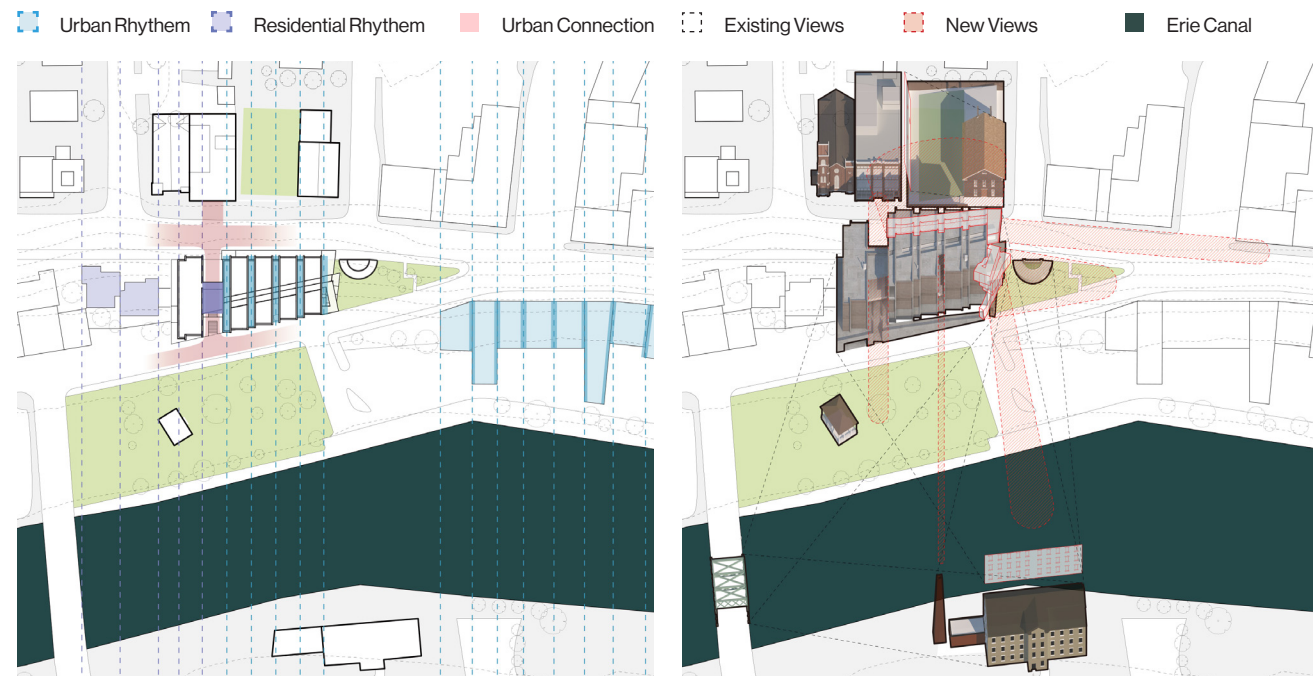
The quilt is an article of utilitarian value in its role as a bed covering. It is also an instrument of women's socialization in its role as the product of quilting bees and other collaborative efforts.

The social history of Seneca Falls also informs the town's role as site of the Museum of the American Quilt. It is the site where the first convention for women's rights was held in the Wesleyan Methodist Chapel and stands several significant memorials such as the Women's Rights National Historical Park.

The quilt as an artifact whose construction materials and techniques can contribute to its meaning in many ways, and this project intends to create an analogy of the quilt to architecture both in the tectonics and details of material expressions that embodies the spirits of the women's rights. By this way, we create an architecture that pays tributes to the site's cultures and at the same time honors its physical fabrics.

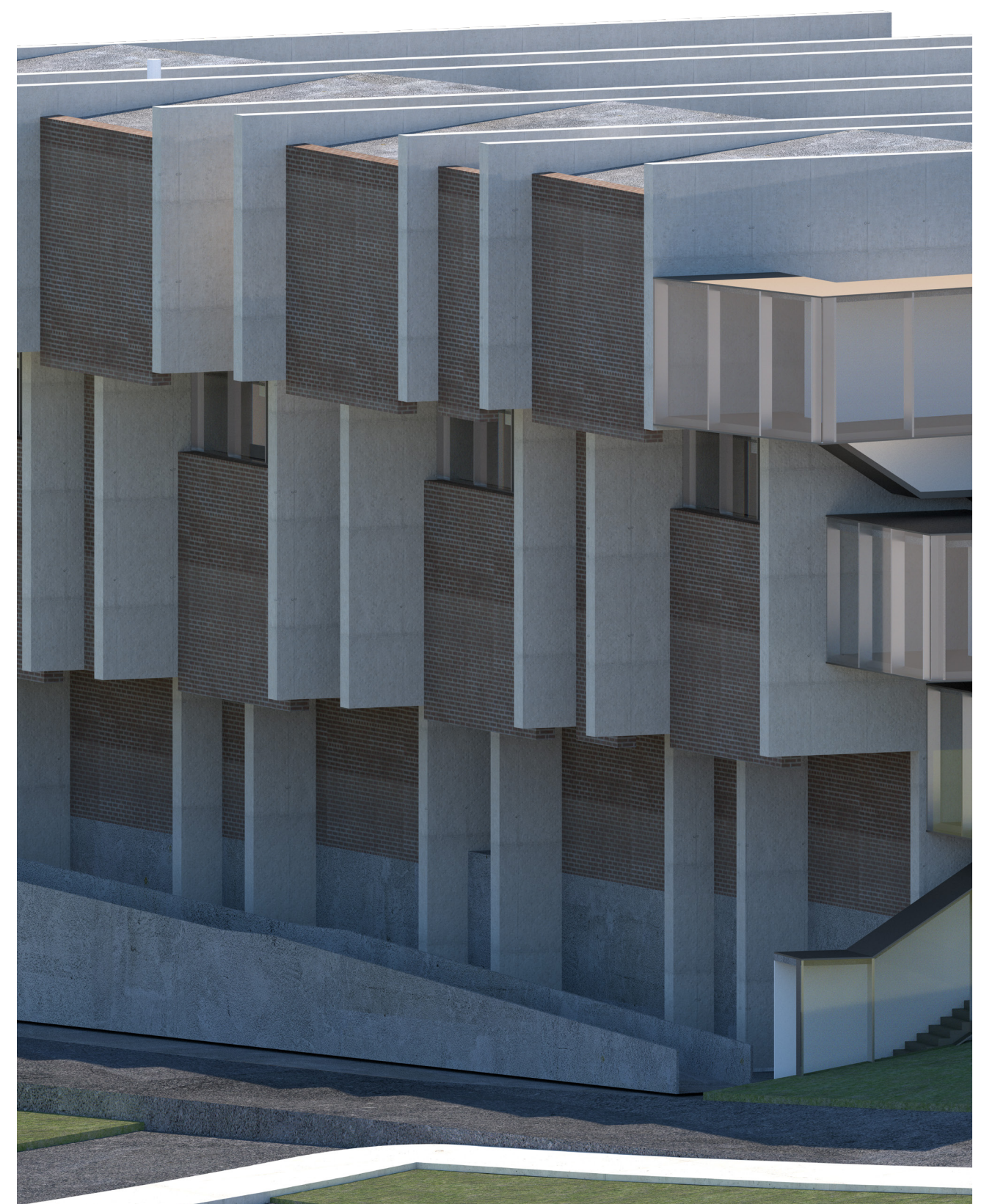


Seneca Falls Down Town Context

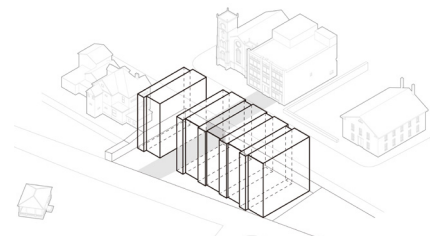


Fusion of Urban Rhythms

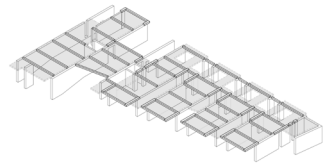
Existing and New Views towards the Monuments



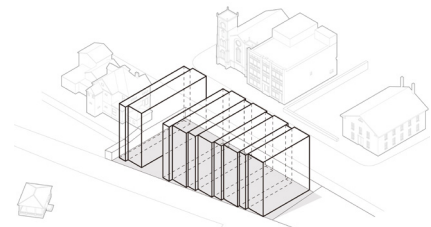
Northwest Axon



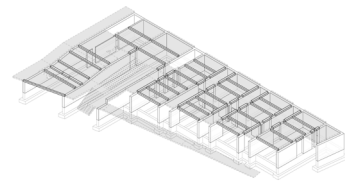
1. Aligned Entrance



2nd Floor Structure



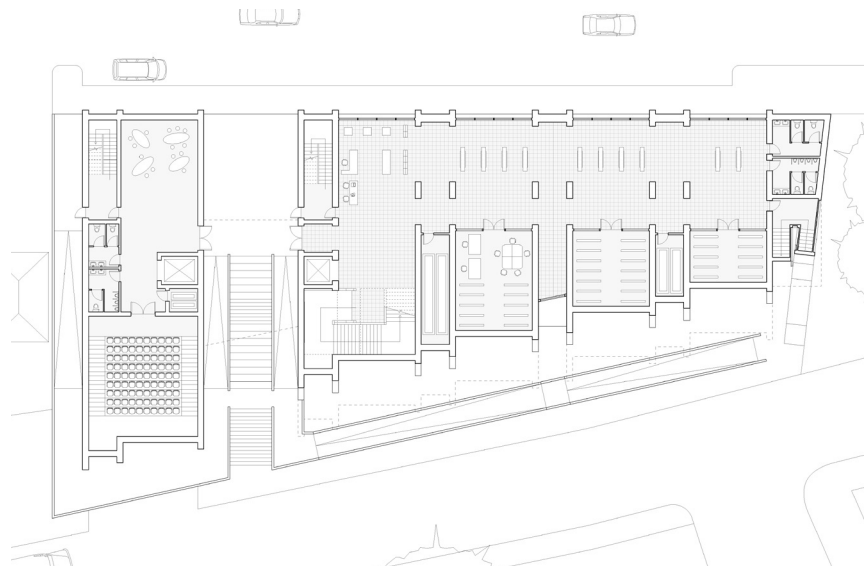
2. Adapting Massing to Site



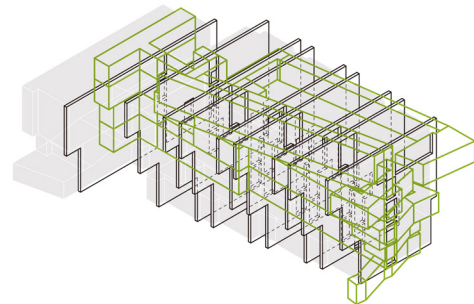
1st Floor Structure



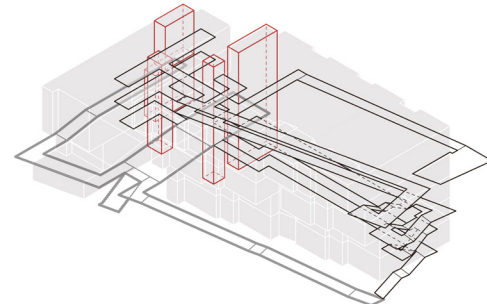
2nd Floor Plan



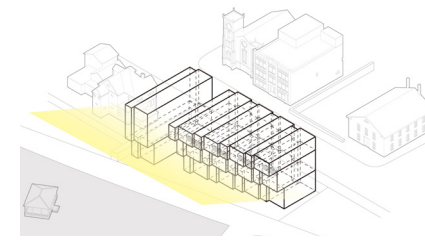
1st Floor Plan



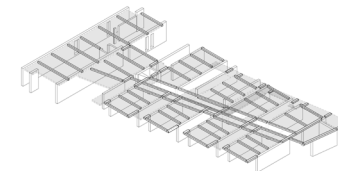
Structure and Spatial Experience



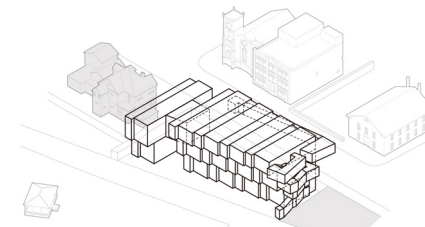
Circulation and Egress



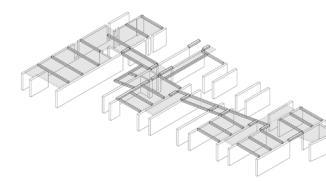
3. Shading for South Windows



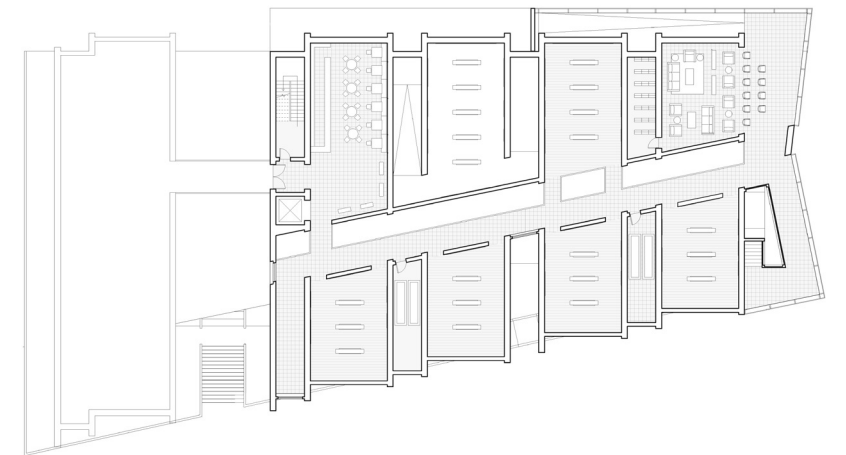
4th Floor Structure



4. Contextual Scale Adjustment and Additional View Features



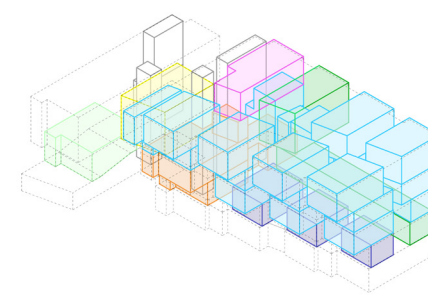
3rd Floor Structure



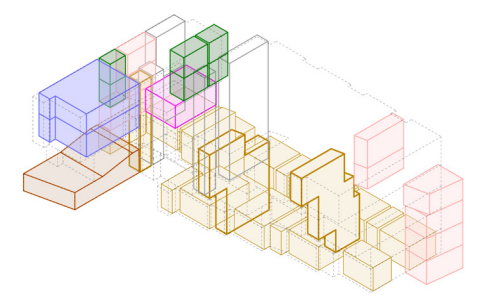
4th Floor Plan



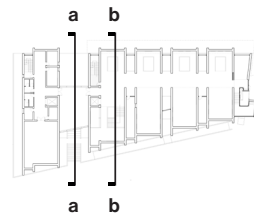
3rd Floor Plan



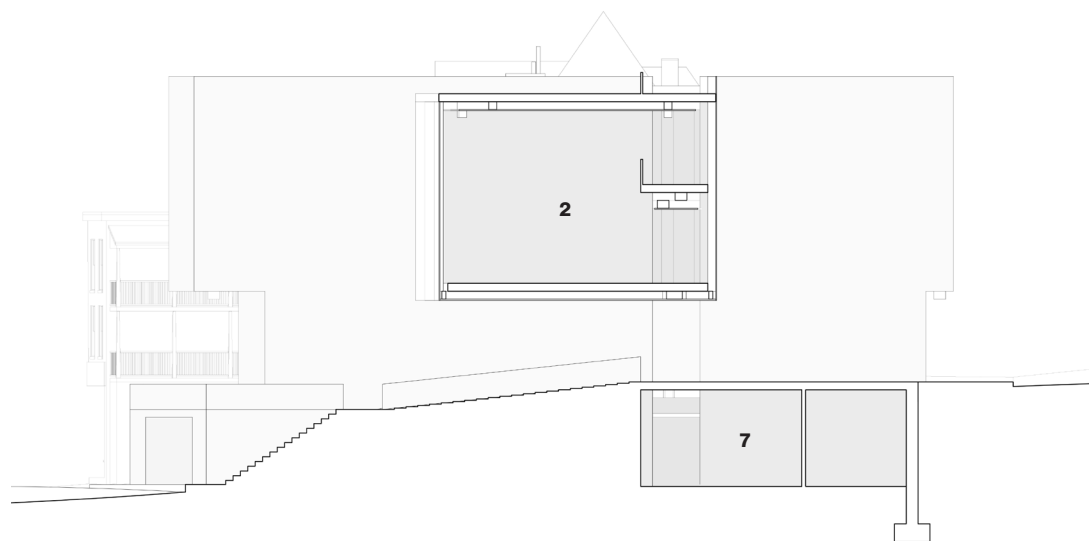
Museum Programs



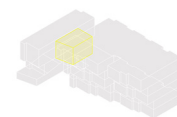
Service Programs



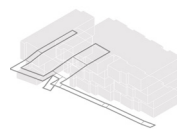
1. Permanent Gallery
2. Quilting Room
3. Walk Way
4. Lobby
5. Cafe
6. Guest Storage
7. Electric Room
8. Entrance



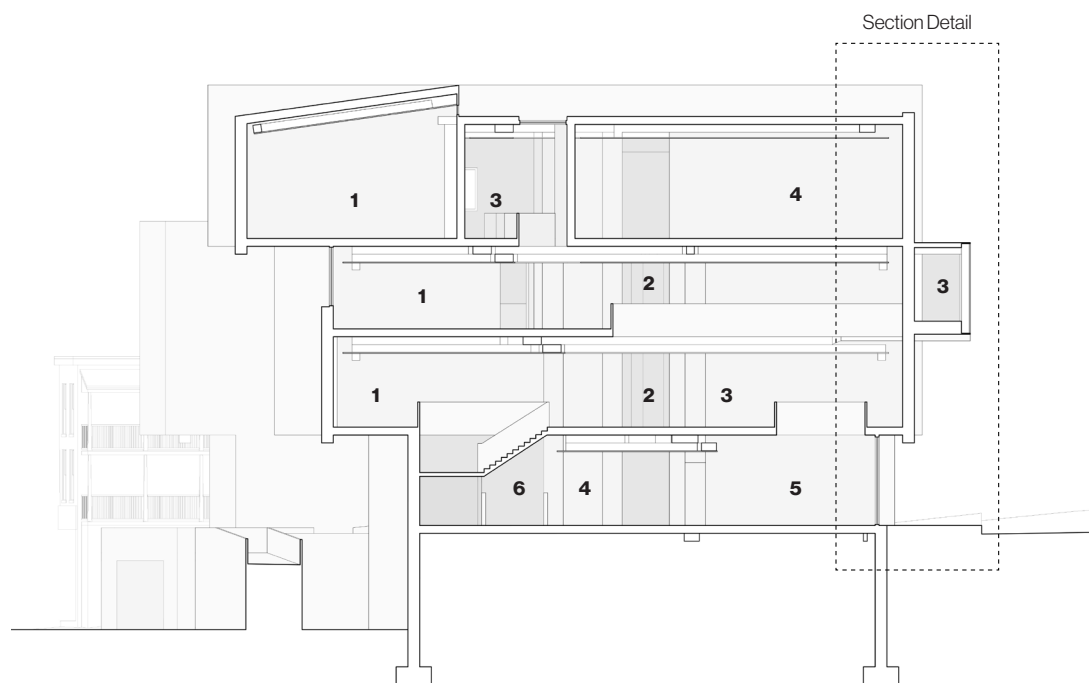
Section a-a



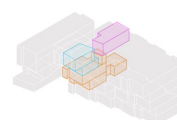
Program



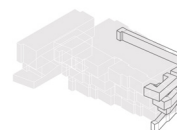
Circulation



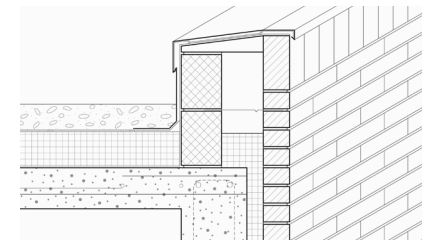
Section b-b



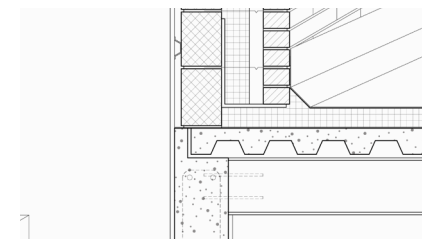
Program



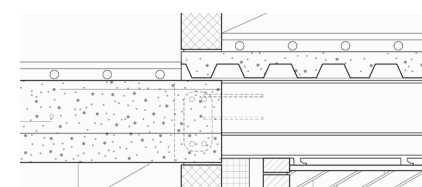
Circulation



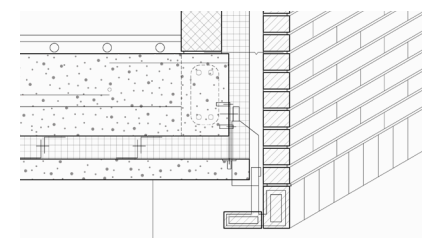
North Section Zoom-in No. 1



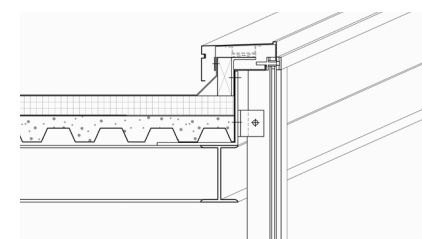
North Section Zoom-in No. 2



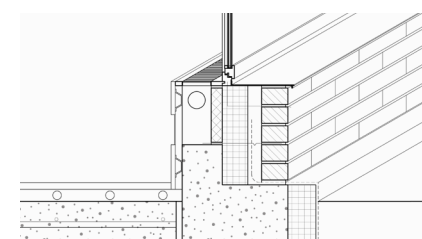
North Section Zoom-in No. 3



North Section Zoom-in No. 4

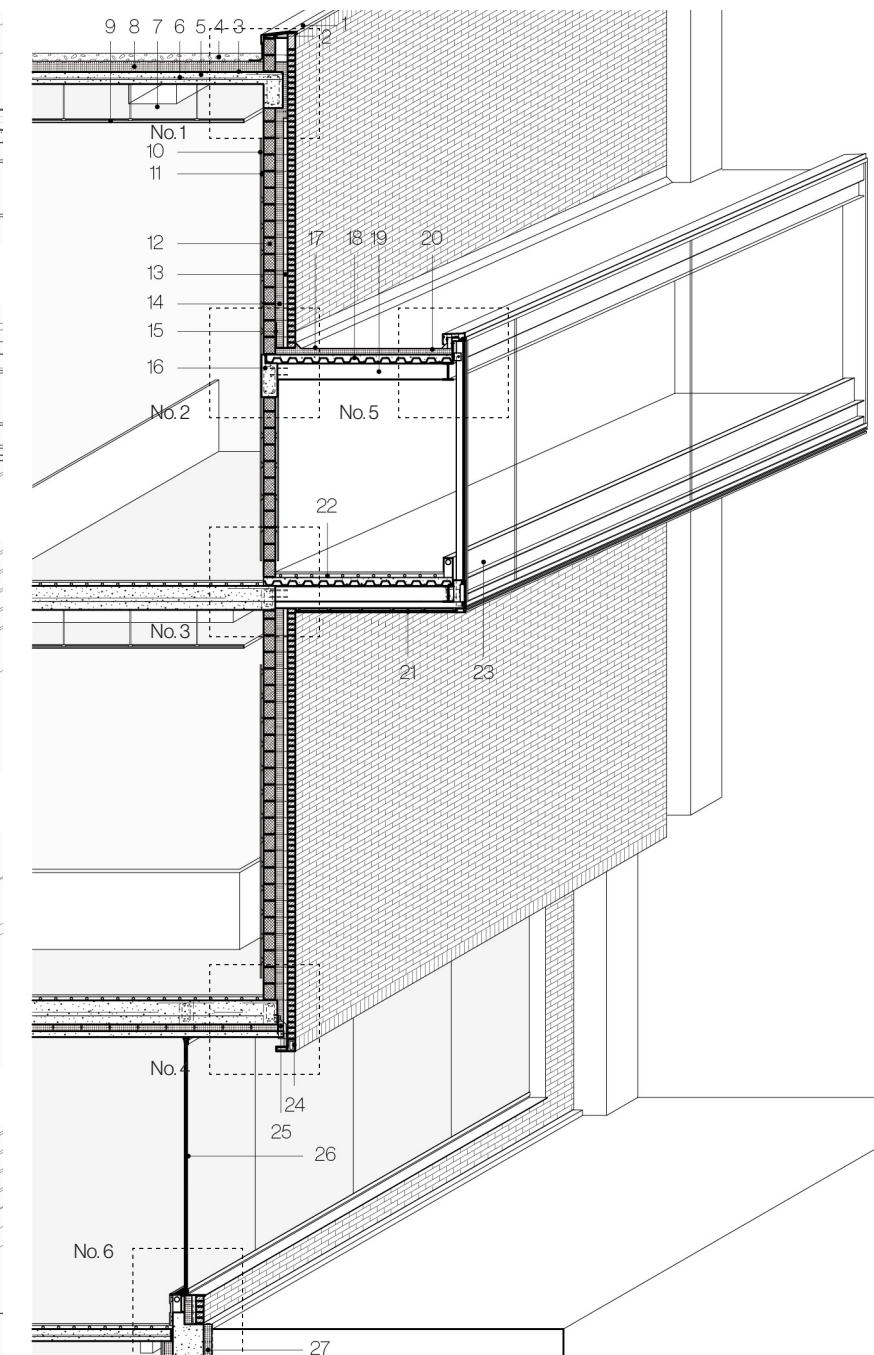


North Section Zoom-in No. 5

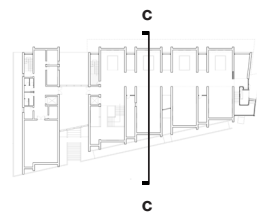


North Section Zoom-in No. 6

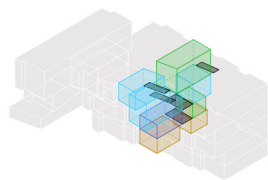
- | | | | |
|-----------------------------|--------------------------|------------------------------|---------------------------|
| 1. Sheet Metal Capping | 7. HVAC Return Duct | 15. Steel Angle | Soffit Panel |
| 2. Profile Timber Section | 8. Rigid Foam Insulation | 16. Concrete Beam | 22. Hydronic Pipes |
| 3. Diffusion-tight Membrane | 9. Drop Ceiling | 17. Metal Capping | 23. Hydronic Convector |
| 4. Stone Chipping | 10. Gypsum Board | 18. Metal Deck | 24. Halfen FK4 Brickwork |
| 5. Reinforced Concrete Slab | 11. Metal Furring | 19. I Beam | Support |
| 6. Tension Reinforcement | 12. CMU Brick | 20. Diffusion-tight Membrane | 25. Brick Soffit Support |
| | 13. Cavity | 21. Aluminium Composite | 26. Double Glazing |
| | 14. Metal Wall Tiles | | 27. Rigid Foam Insulation |



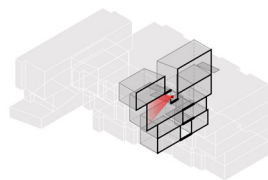
Section b-b North Facade Detail



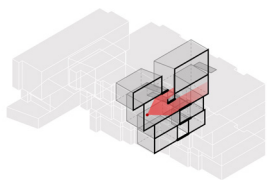
1. Permanent Gallery
2. Event Gallery
3. Archive
4. Walk Way
5. Facilities Room



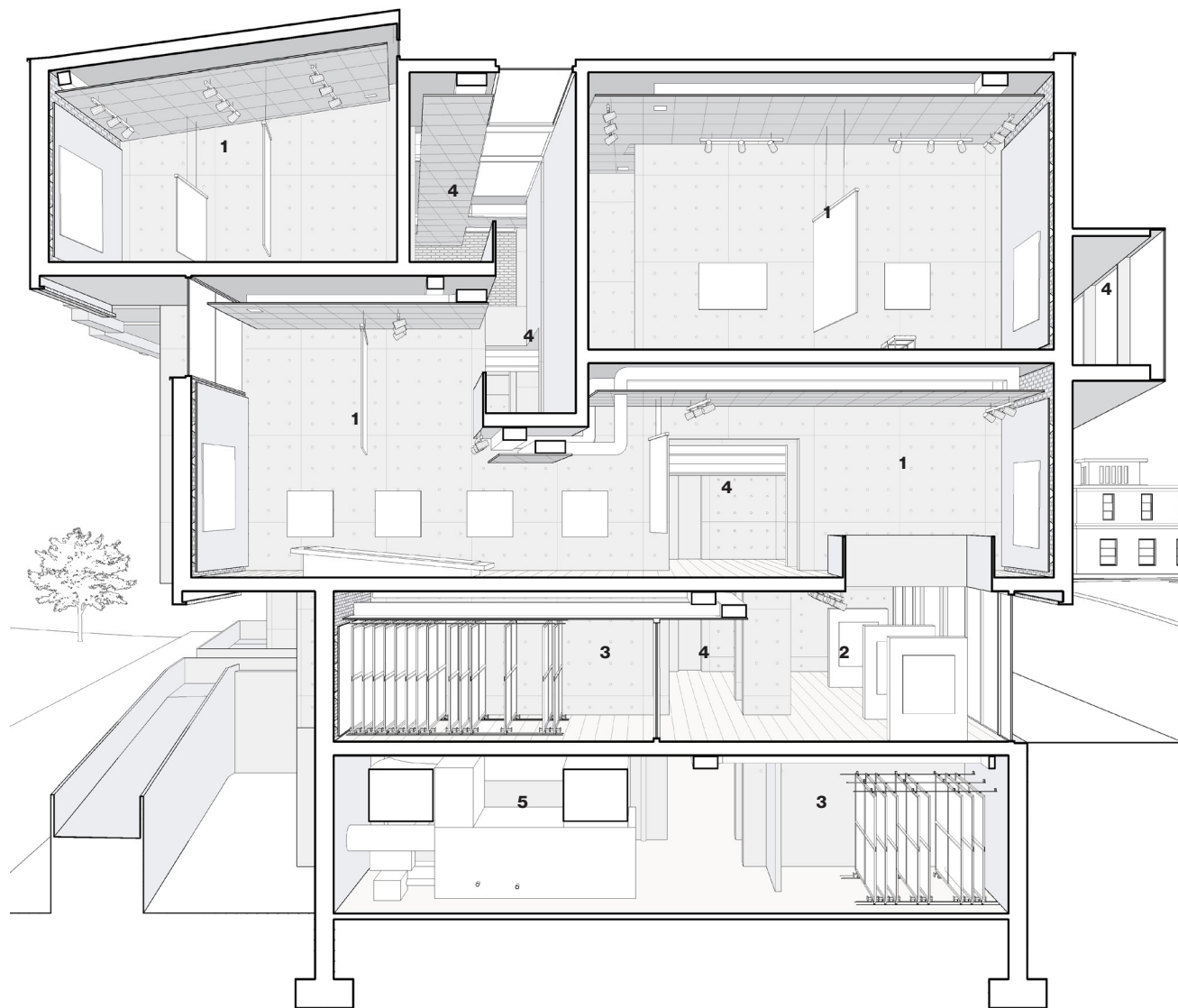
Programs and Circulation



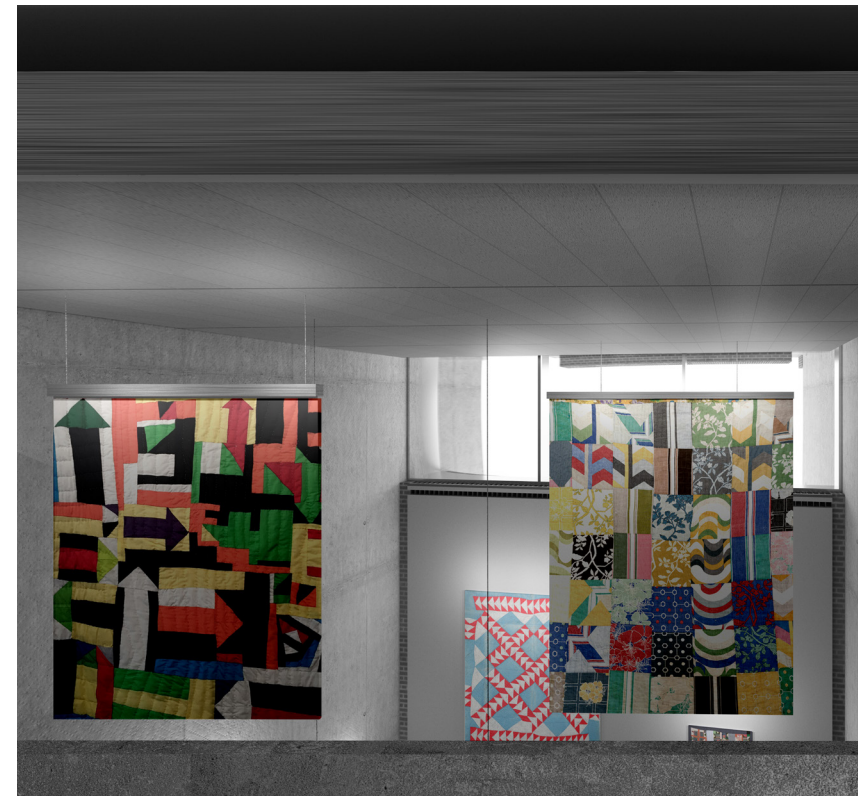
Gallery Perspective 1



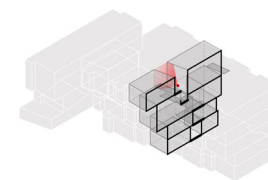
Gallery Perspective 2



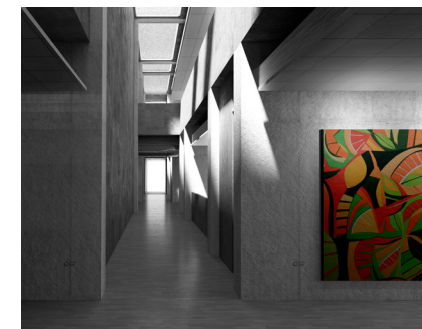
Section c-c



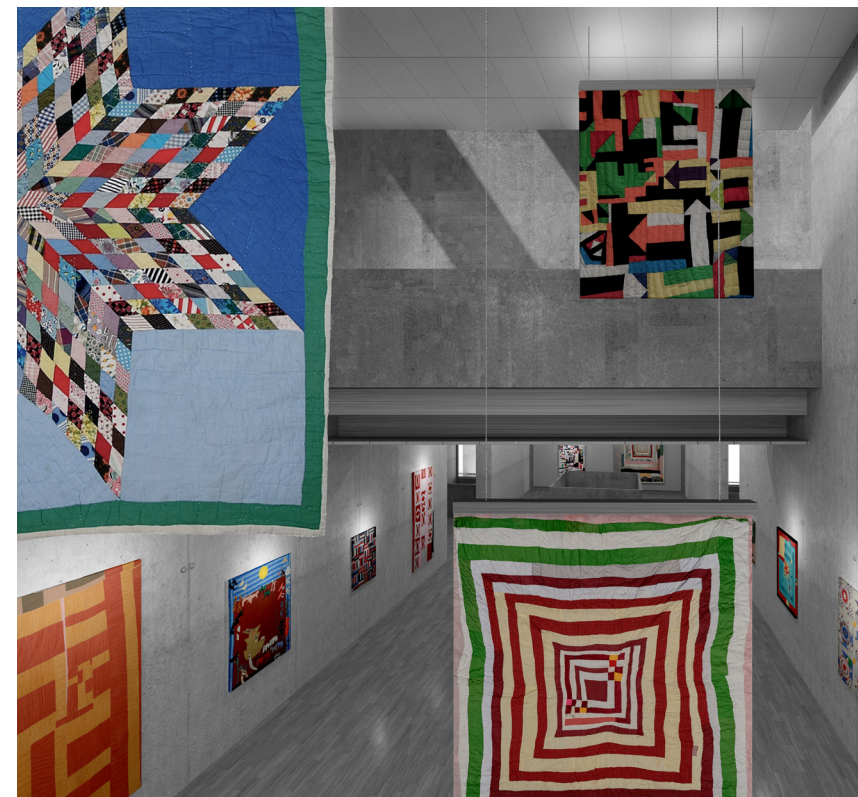
Gallery Perspective 1



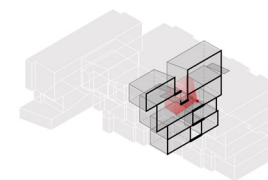
Walkway Perspective 1



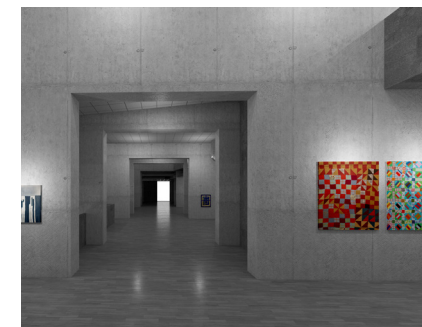
Walkway Perspective 2



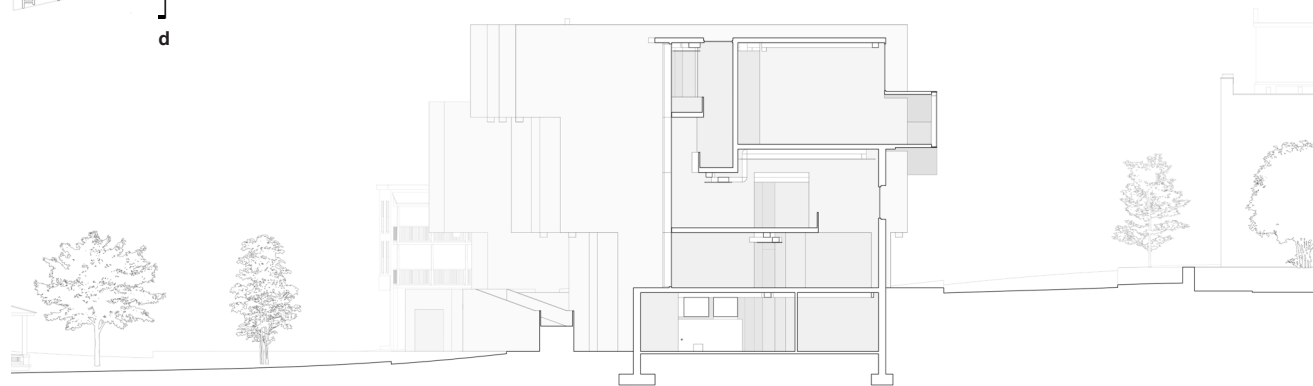
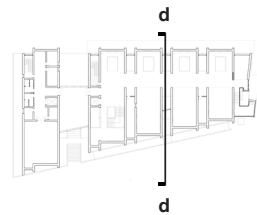
Gallery Perspective 2



Walkway Perspective 2



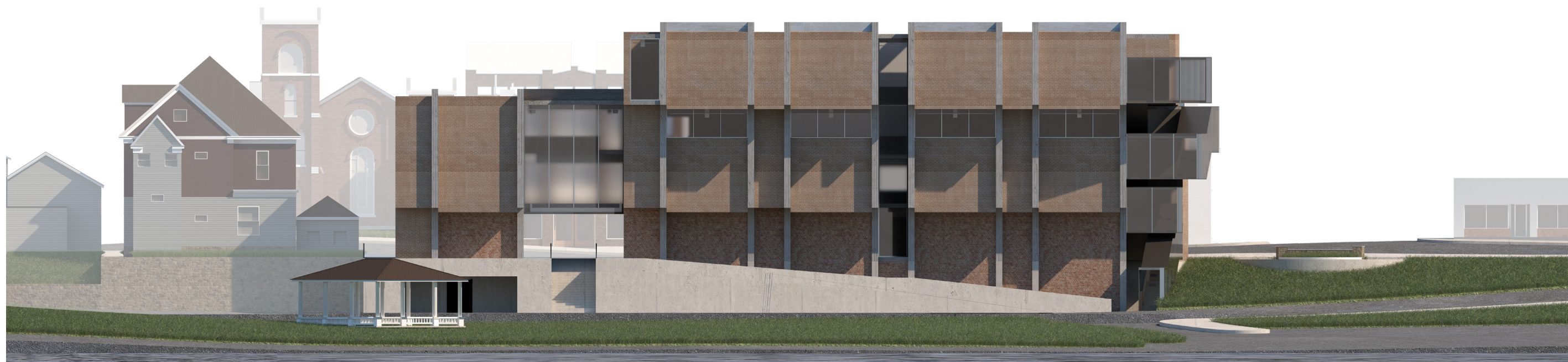
Walkway Perspective 2



Section d-d



East Facade Elevation



South Facade Elevation



Casa Migrante

Academic Fall 2023

Typology: Housing

Cornell University Gensler Visiting Critic Studio

Instructor: Adam Frampton, Emma Silverblatt

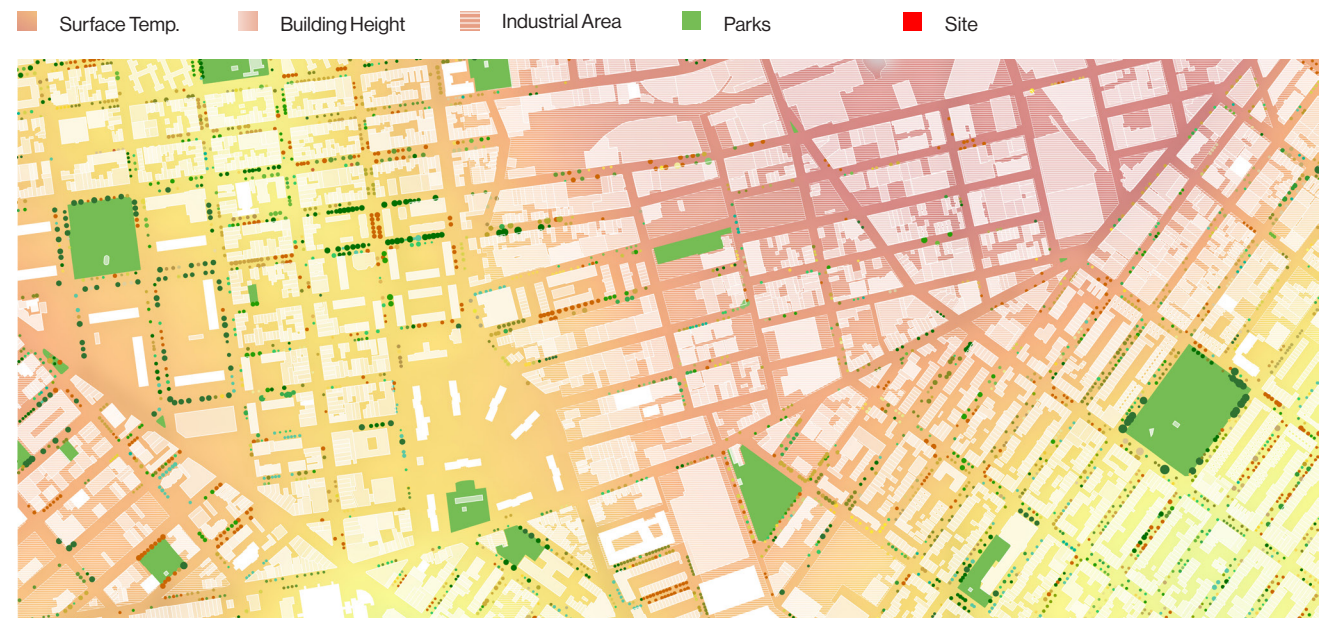
Location: Seneca Falls, New York, United States

Floor Area: 66, 252 sf.

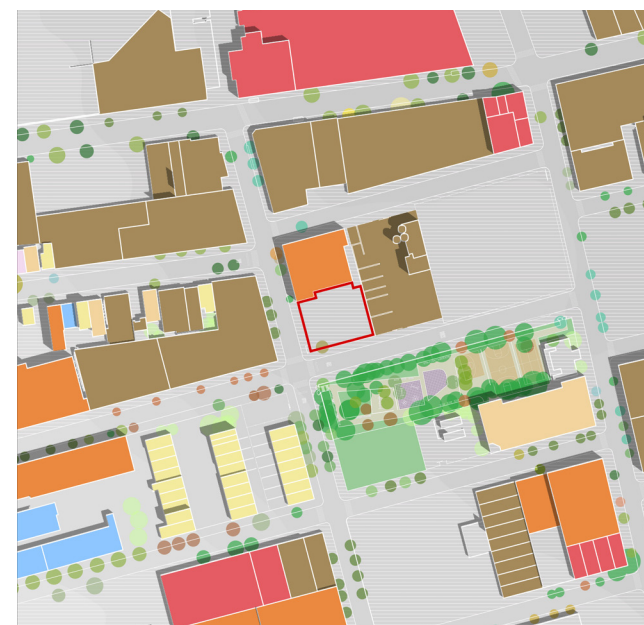
Designed in collaboration with Marcos Escamilla-Guerrero.

All drawings done by author unless otherwise indicated.

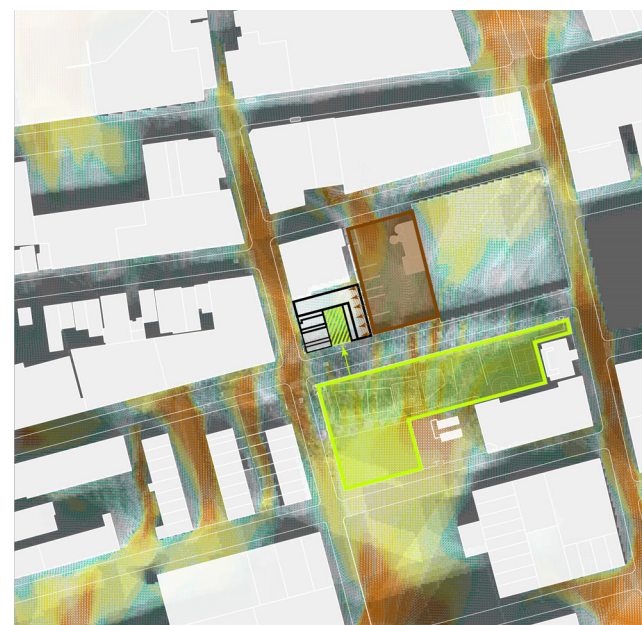
Reacting to the recent significant influx of migrant population in NYC, the urgency of housing becomes critical. Intended to bring back the historic housing typologie of Single Residence Occupancy (or S.R.O hotels) that effectively houses a large number of urban population back in the 1950s, our project intends to explore the S.R.O typology's contemporary possibilities that integrates quality and dignified communal living space with urban greenery.



Urban Surface Temperature and Greenery of East Williamsburg, New York



Site Environment and Adjacency



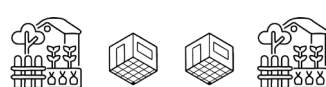
Site Environment and Adjacency



Functional Separation



Integration of Housing and Industry

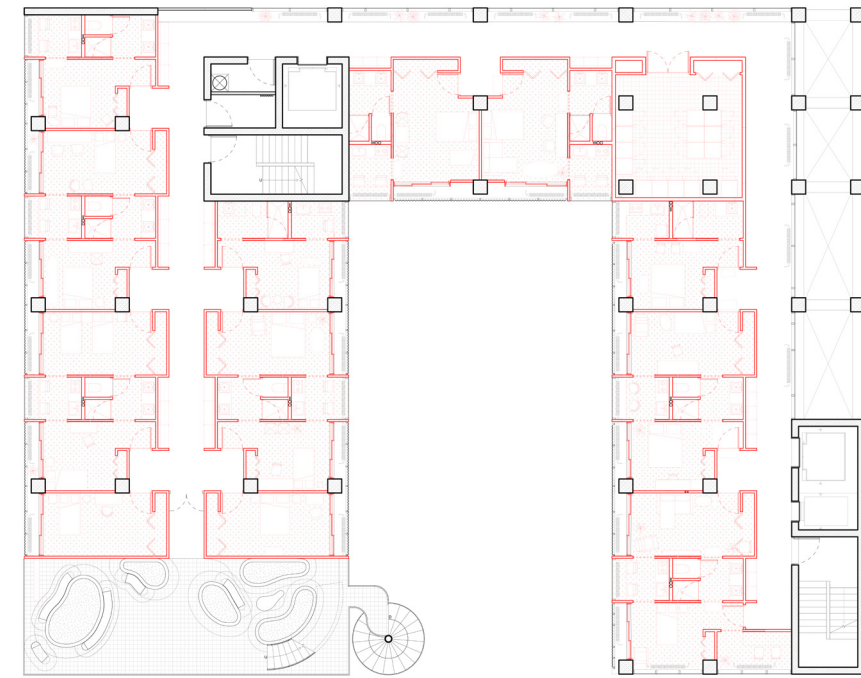


S.R.O. Housing and Urban Greenery

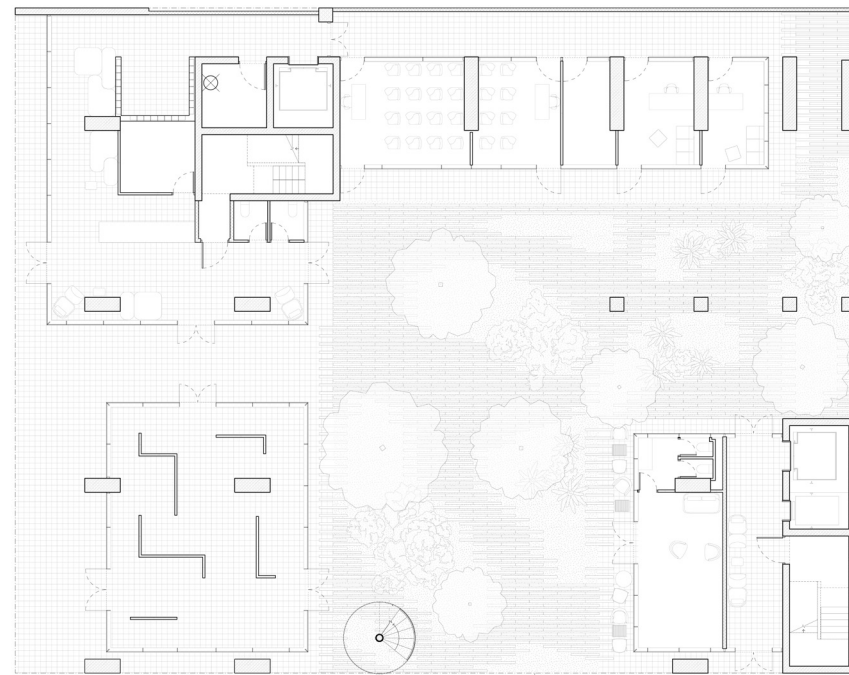
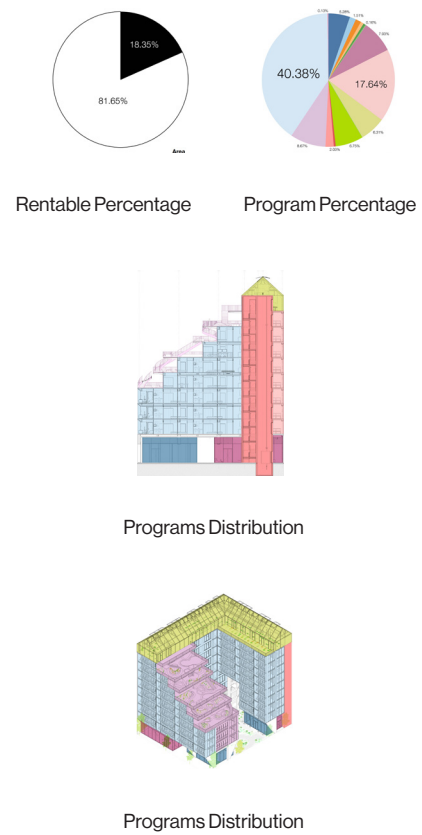


Integration of Migrant Population





Fifth Floor Plan



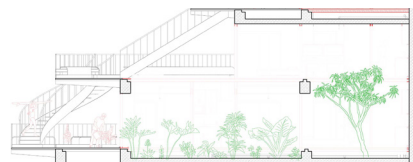
Ground Floor Plan



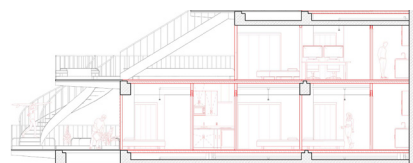
Apartment Interior



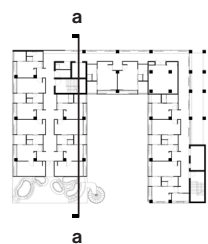
Apartment Transformed into Green House



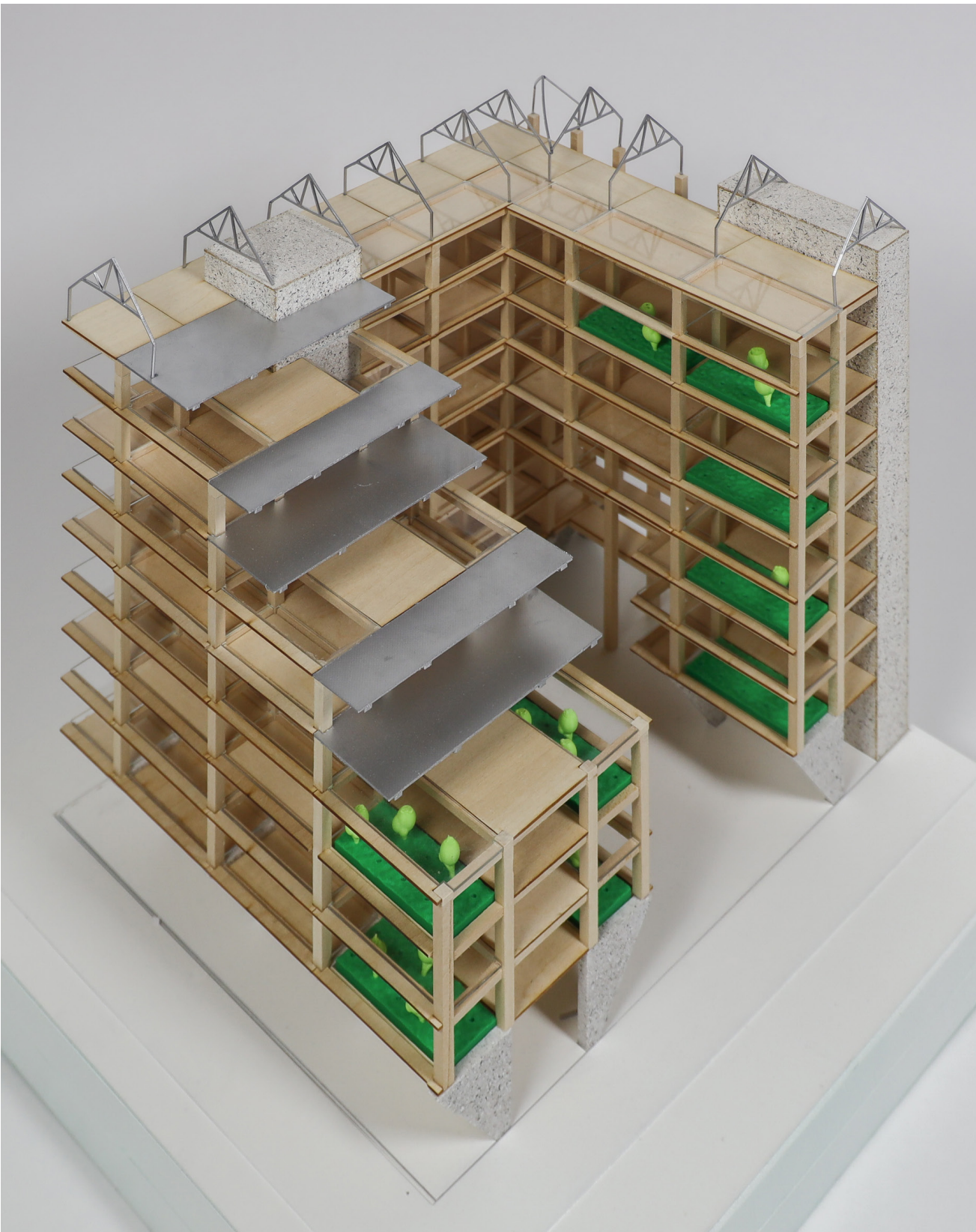
Removed CLT upper floor panel transforms the apartment units into double height plant nursery.



The project incorporates double floor panels made of CLT (top) and pre-fab concrete panels (bottom) on every other level, and CLT panels on the remaining floors to achieve adaptability.



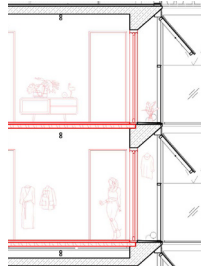
Section a-a



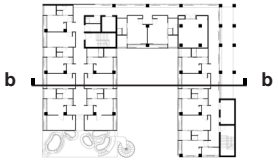
Structural Model



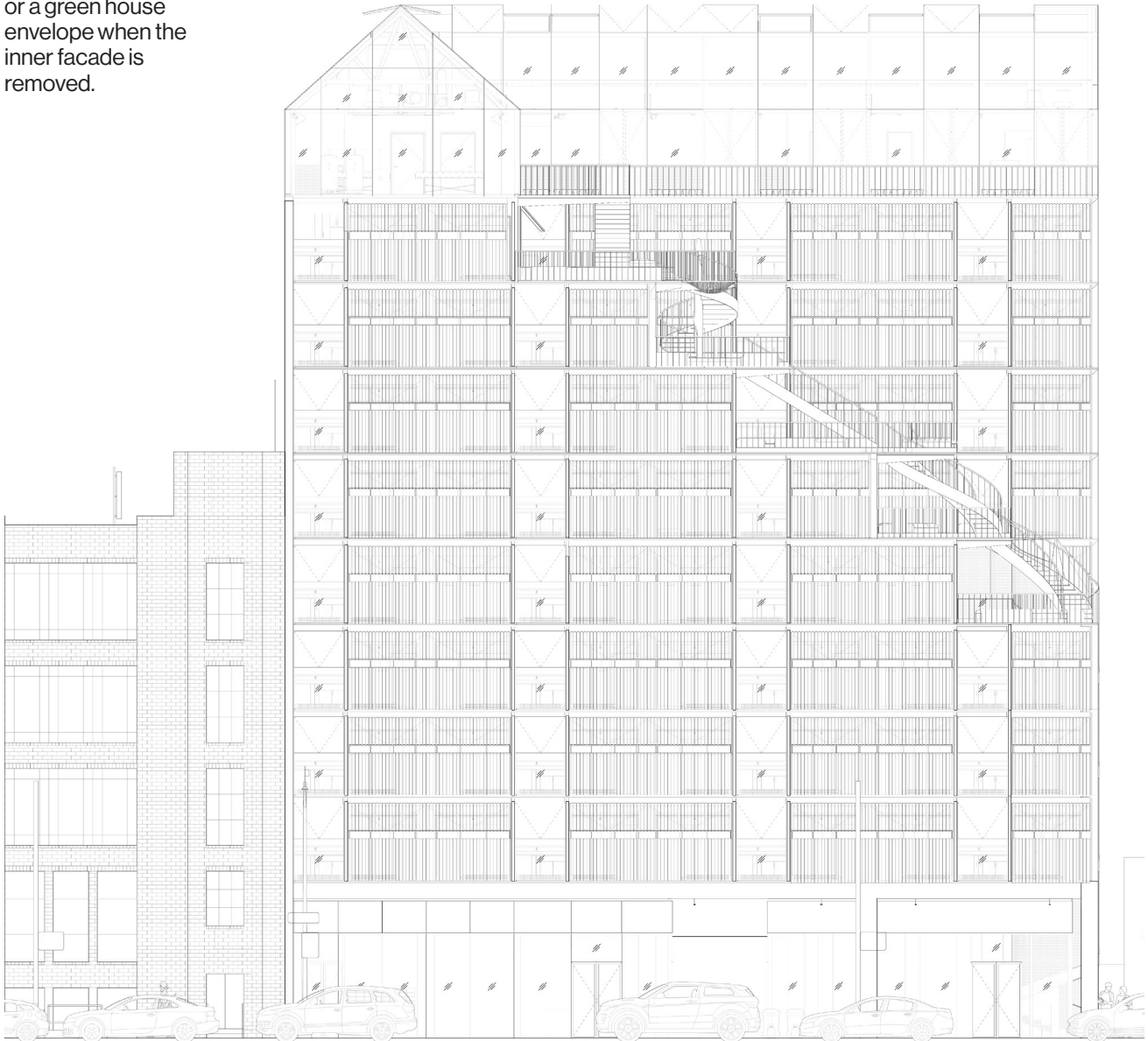
Double layered envelope system with operable polycarbonate panels.



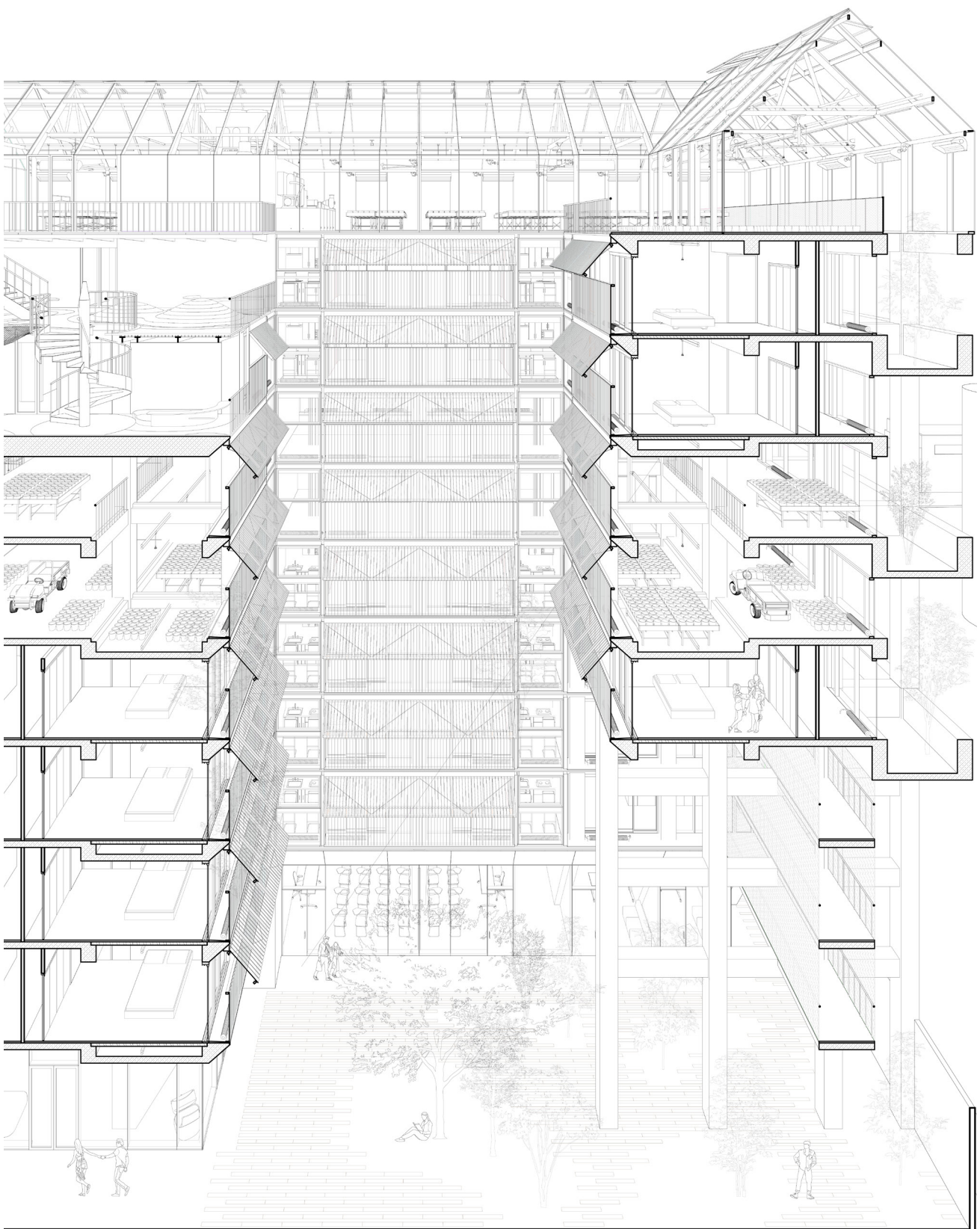
Double Facade in Section



This either produces a balcony for the residential units or a green house envelope when the inner facade is removed.



West Elevation



Section Perspective b-b



Rewriting Exurbia

Academic Summer 2021, Summer 2022
Typology: Housing
Syracuse University SOURCE Grant Research
Instructor: Lawrence Davis

Location: Willingboro, NJ
Area: 1,500 ~ 3,000 sf. per lot

Designed in collaboration with Chenhao Luo.
All drawings done by author unless otherwise indicated.

After the end of World War II, the United States and Canada experienced an upsurge in the production of small single family detached homes. The vast and systematic construction of 600 s.f to 1500 s.f. residential units on 1/4 to 1/3 acres sites was in response to pent up savings accumulated during the War mainly by the working class and a desire to acquire an established symbol of prestige, the suburban home.

Many of these developments are now in what many call a state of “decline “ and disrepair, losing their value and experiencing the same social stress associated with the center city. Numerous postwar developments are also changing demographically. The infusion of new people with new values is changing the conventional metabolism of these communities. In many cases, new residents have different family structures, use the space of the site in multi-functional ways, celebrate shared events through rituals new to the exurban city. This suggests that conventional space of postwar exurbia comprised single family houses on private lots of land, needs to change.



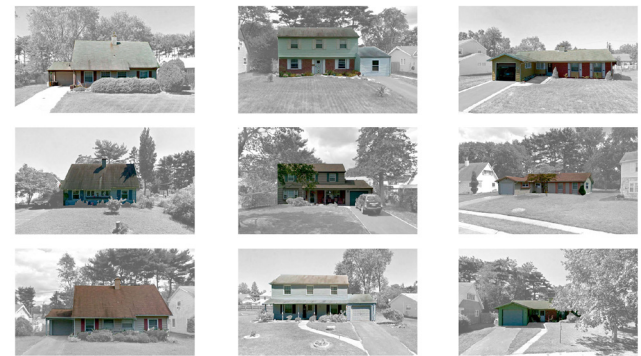
Willingboro in Burlington County, New Jersey



Cape Cod

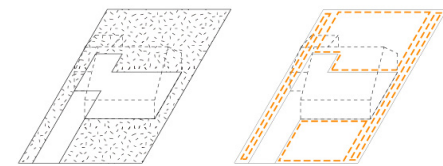
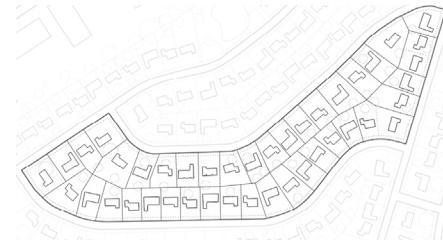
Colonial

Rancher



The Levittown-type American suburb was the engineered visage of the perfect lifestyle of the post war middle-class white Americans. The special typology of the detached single family house gave birth to the expansive park-like country driveways produced by the formal front lawns.

The site of intervention, town of Willingboro in Burlington County, New Jersey, was the third planned Levittown of the United States.



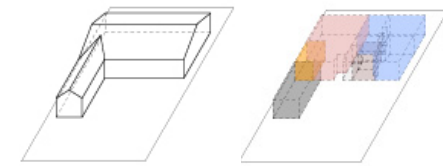
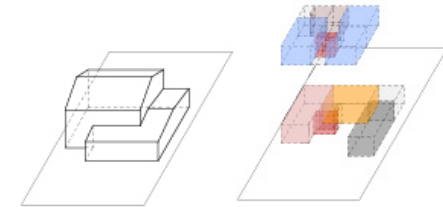
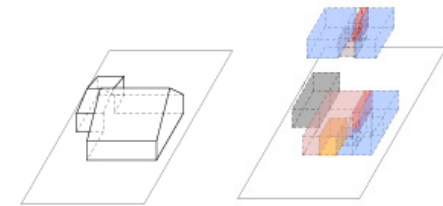
Lawn

Yards

Cape Cod

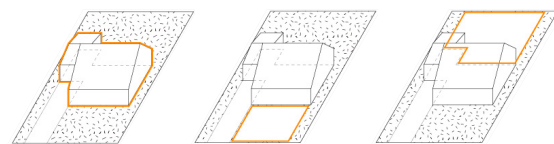
Colonial

Rancher



Massing

Program

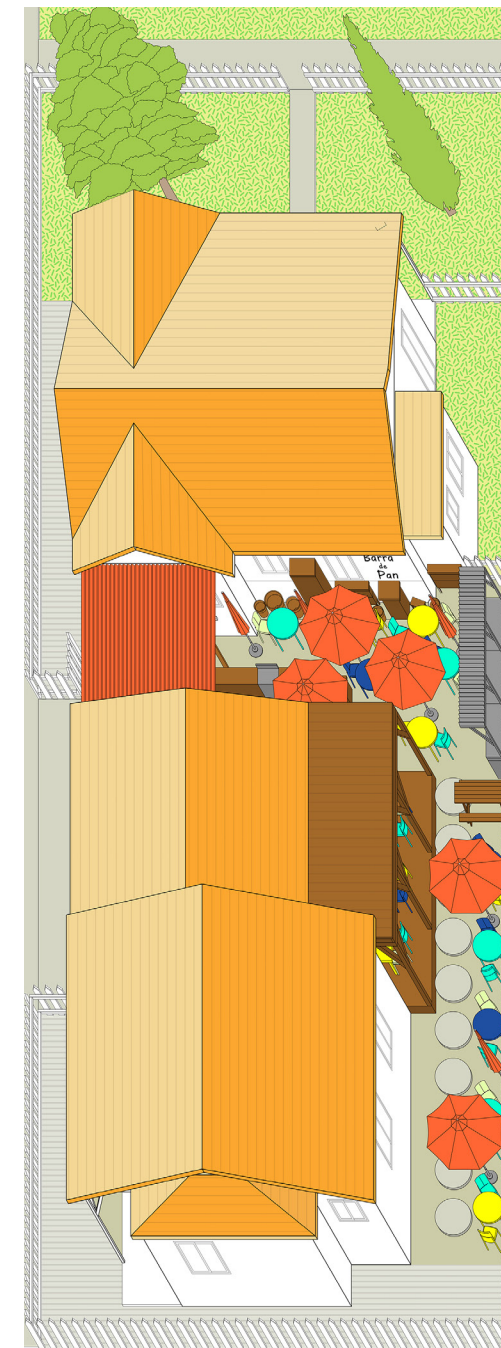
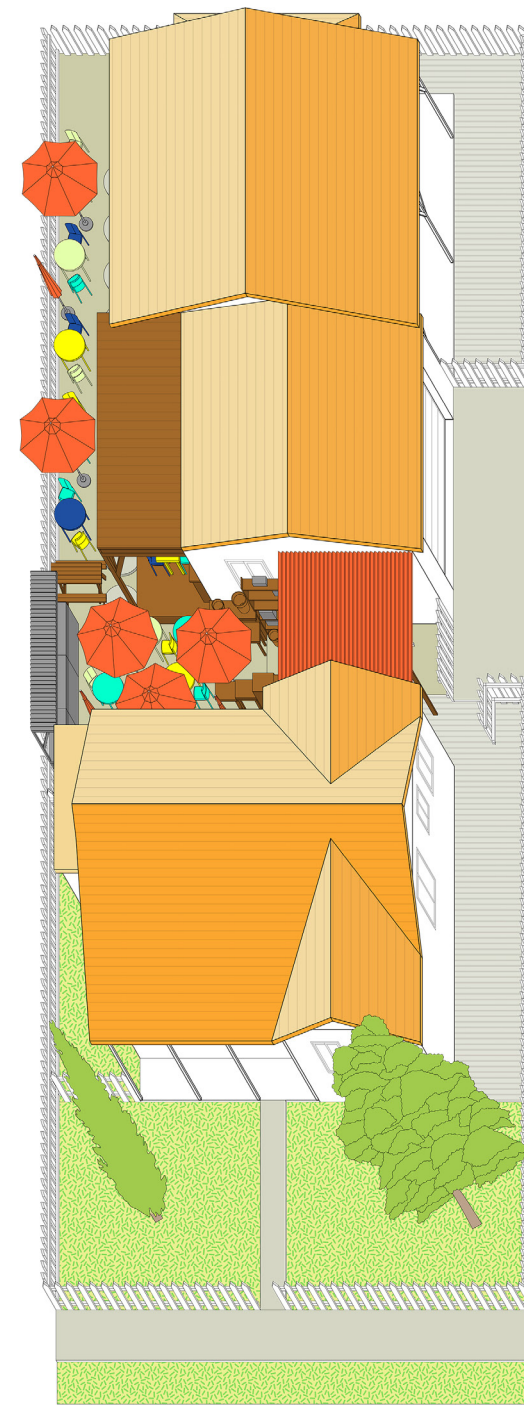


House

Front Yard

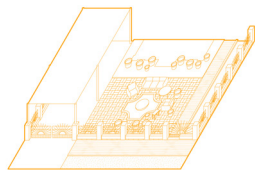
Backyard

Resulted from the demographic change in the American Exurbia, physical transformations in the 1) house, 2) front yard, and 3) backyard has been observed.

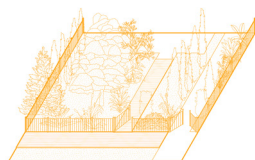


Household kitchen restaurant, Barra de Pan, is the most vivid example of backyard interventions. The Hispanic household in Westminster, CA, tries to generate supplemental revenue through operating an informal restaurant at their own backyard. This has infused the neighborhood with energy and joy, and hints transformative possibilities of the suburban typologies and zoning changes.

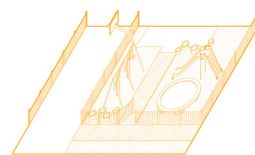
- 1 Vietnamese Roof
- 2 Chinese Courtyard
- 3 Front Yard Lawn
- 4 Backyard Canteen



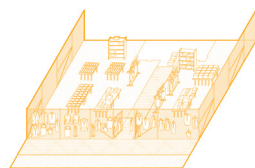
Front Yard Lounge



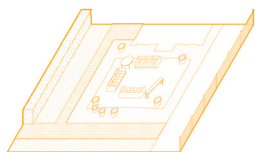
Front Yard Garden



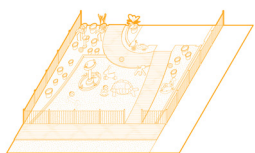
Front Yard Playground



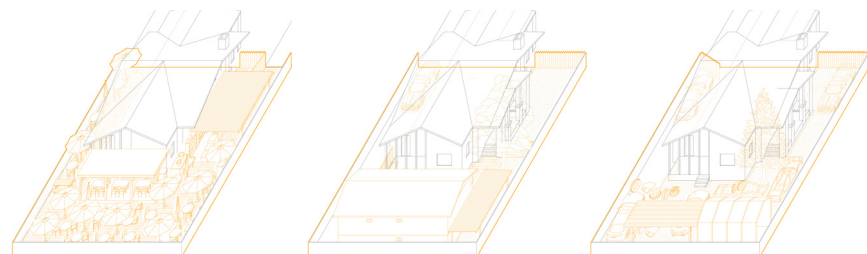
Front Yard Market



Front Yard Plaza



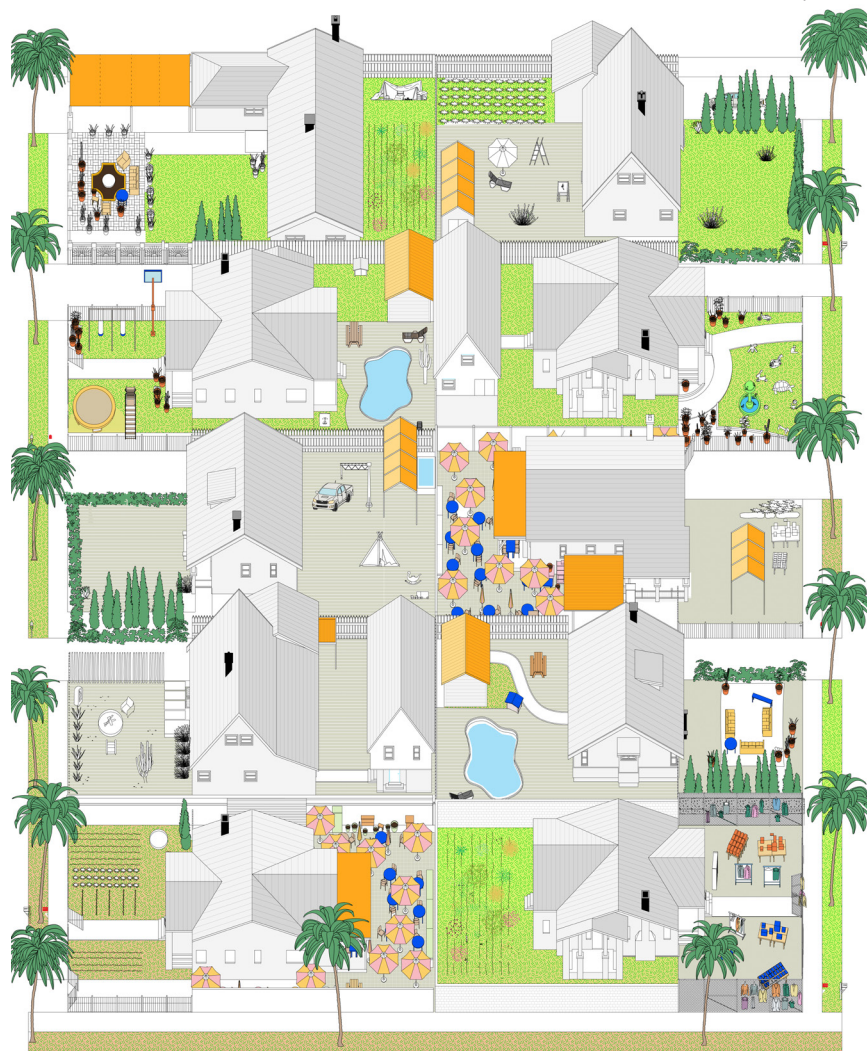
Front Yard Memorial



Back Yard Kitchen

Back Yard Extension

Back Yard Workshop

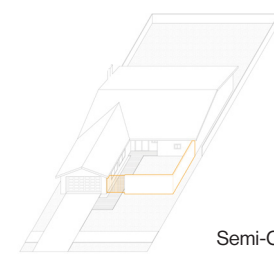


The Hispanic Parking drawing is produced by Chenhao Luo.

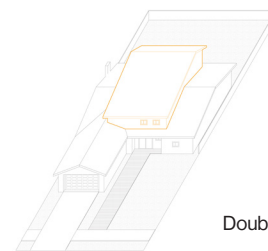
The Hispanic Park

Surveying the Neighborhoods of Westminster, California, where there is a dominant concentration of Asian and Hispanic populations, the typical landscape and image of the American suburb has greatly transformed. Front and backyards of the traditional levtown typology became increasingly programed and ground surfaces hardened.

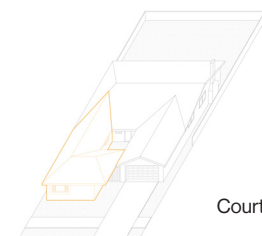
As an analytical study of such transformations, documentary drawings of different examples of transformation are recorded, featuring a variety of functions such as retail, recreation, and social gathering. Eventually, an imaginary landscape *Hispanic Park* is produced to illustrate the new image of the Exurbia.



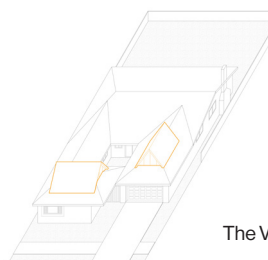
Semi-Courtyard



Double Floor



Courtyard Overlook



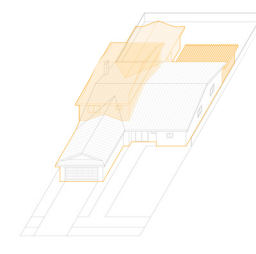
The Vietnam Roof



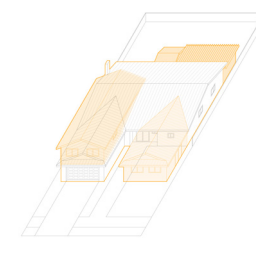
The Japanese Facade



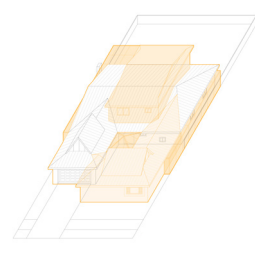
The Iconic Gate



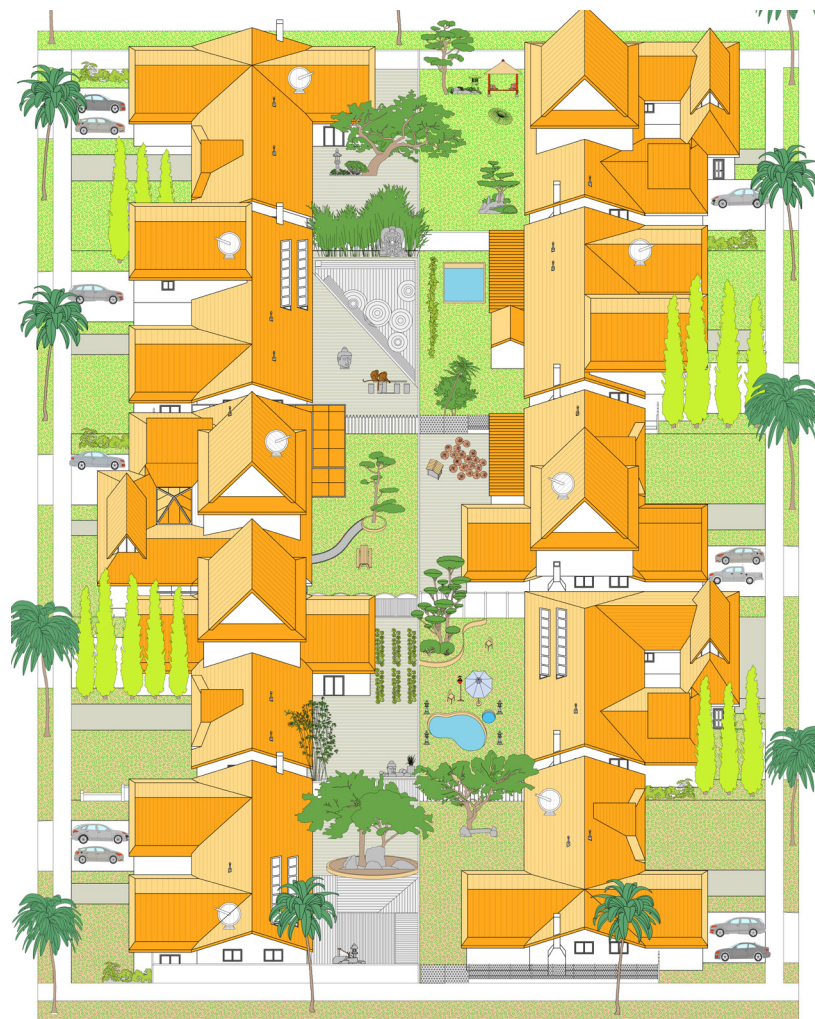
House-in-Garden Addition



Semi-Courtyard Addition



Full Courtyard Addition



The Asian Parking drawing is produced by Chenhao Luo.

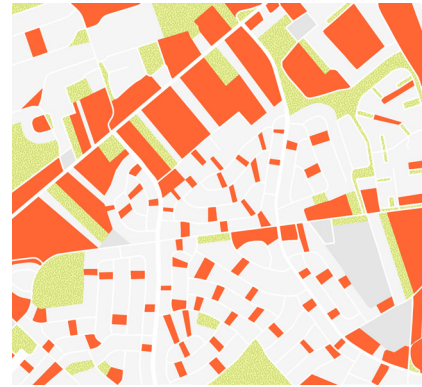
The Asian Park

Similar to the great changes in the resident's appropriation of the lawns of the Hispanic communities, the Asian neighborhood was also completely transformed, sometimes to a degree that completely eradicates the traces of american neighborhoods.

Without much special treatment to the ground surfaces of the lots, the Asian community modifies the form of the house itself, where different types of additions are built to either privatise more formal lawns in the classic levtown typology or to simply expand for housing extended families. Similarly, the different variations of the additions are collectively organized into the imaginary landscape of the *Aisian Park*.



Community Facility Distribution Before



Community Facility Distribution After

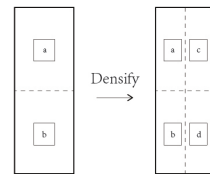


Selected Lot For Transformation

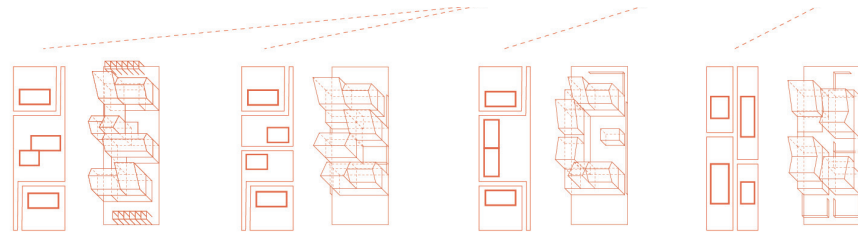
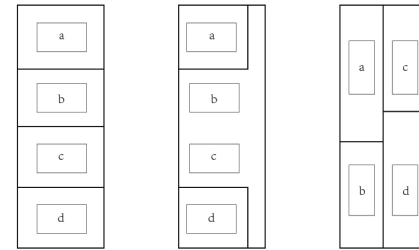
Design lessons from the vernacular analysis of the Los Angeles residential lots provides the basis for the new design.

The six redesigned lot moduals intend to urbanise and diversify the original undifferentiated and stagnant conditions.

The major approaches are to densifying and rearranging the classic lot organizations, programmatic compositions, and private and public relationships to produce more public space, community functions, and increased opportunities of neighborly contact.



Two Lot Transformation

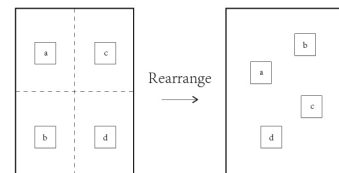


Cross Lot No. 1

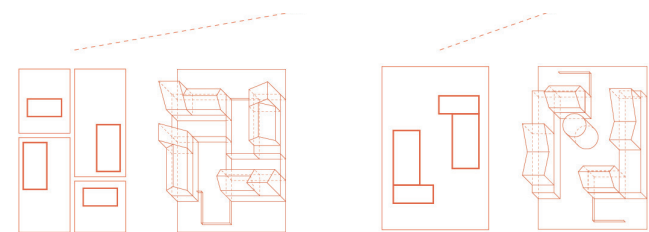
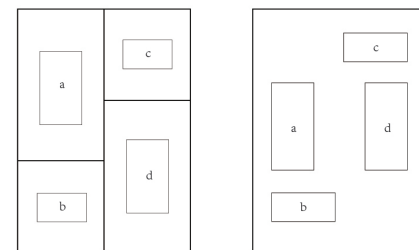
Cross Lot No. 2

Courtyard Lot

Through-Block Lot

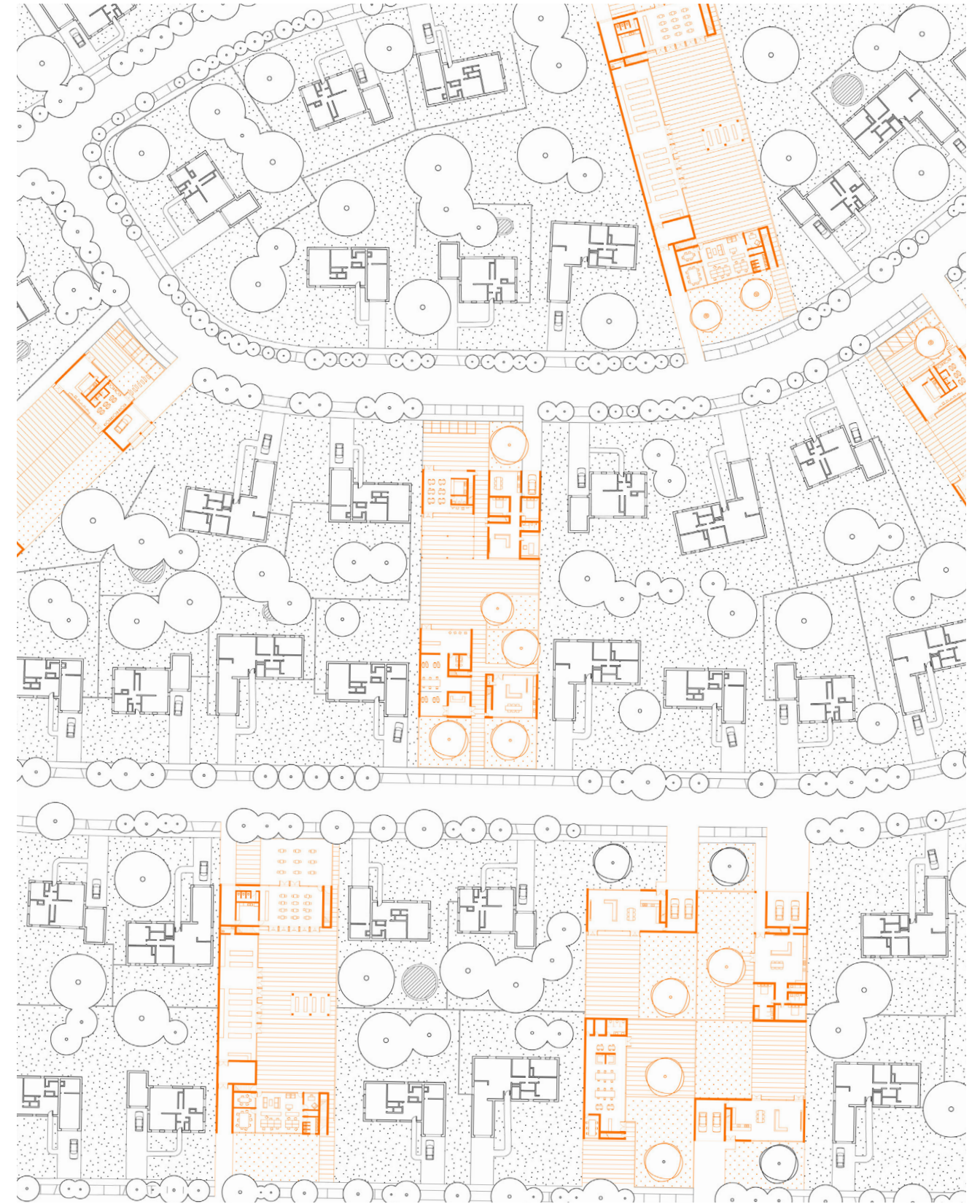


Four Lot Transformation



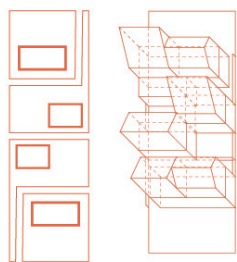
Hierarchy Lot

Open Lot

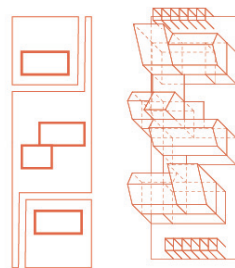


Site plan produced by Chenhao Luo.

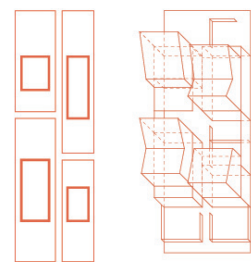
Site Plan



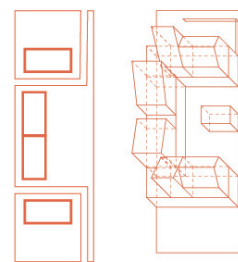
Cross Lot No. 1



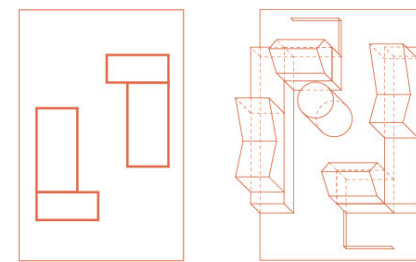
Cross Lot No. 2



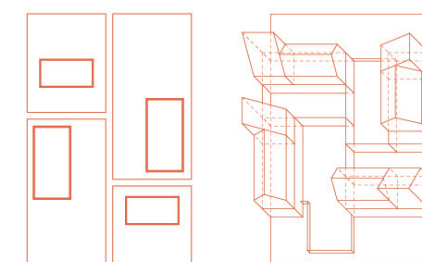
Through-Block Lot



Courtyard Lot



Opoen Lot



Hierarchy Lot

Public Programs

Private Programs

Soft Ground

Hard Ground

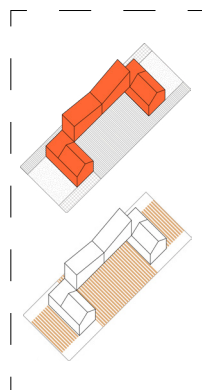
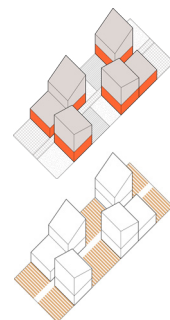
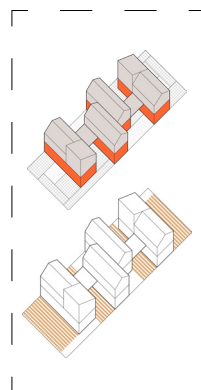
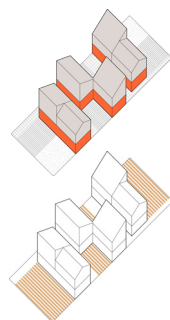
Public Programs

Private Programs

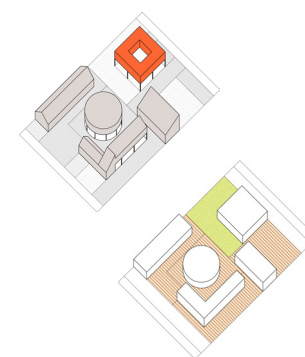
Soft Ground

Hard Ground

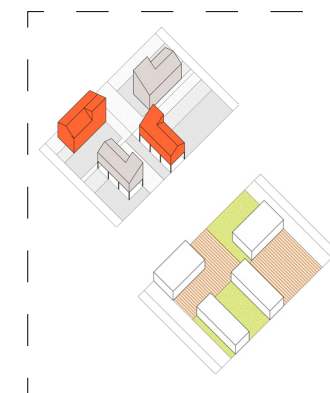
Public Ground Plane



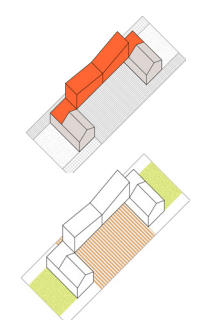
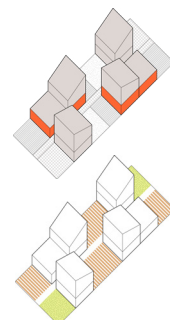
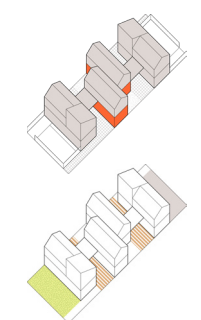
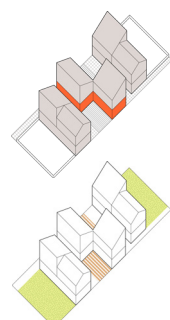
Corner Plaza



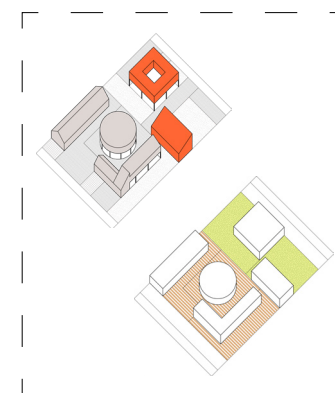
Zig-zog Plaza



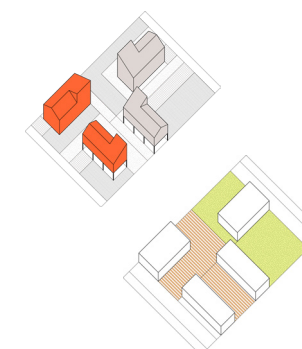
In-Lot Plaza



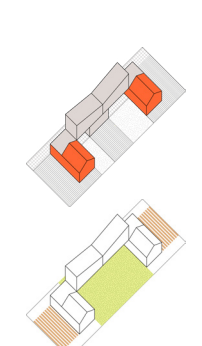
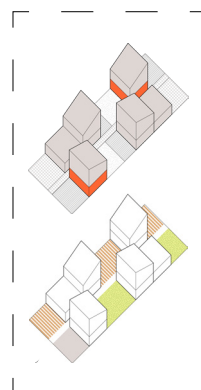
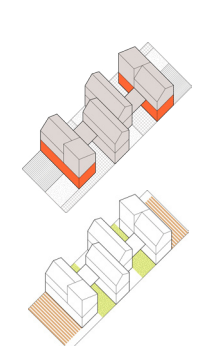
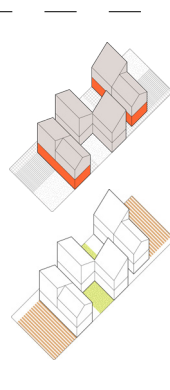
On-Sided Plaza



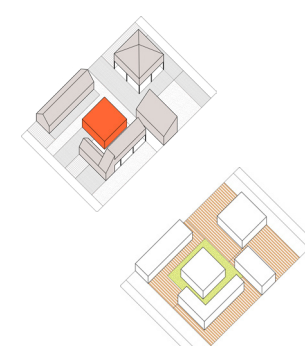
One-Sided Plaza



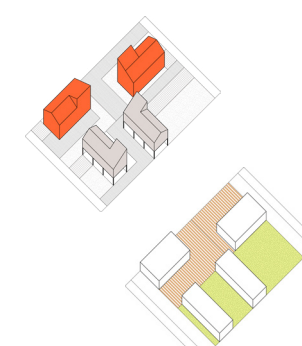
Road Side Plaza



Garden in the Plaza

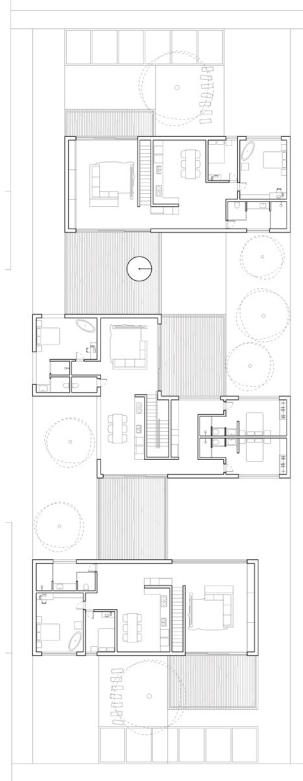


Through-Block Plaza

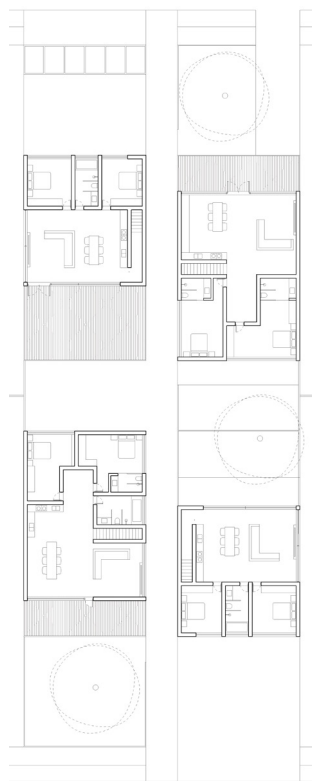




Cross Lot No.1 Second Floor



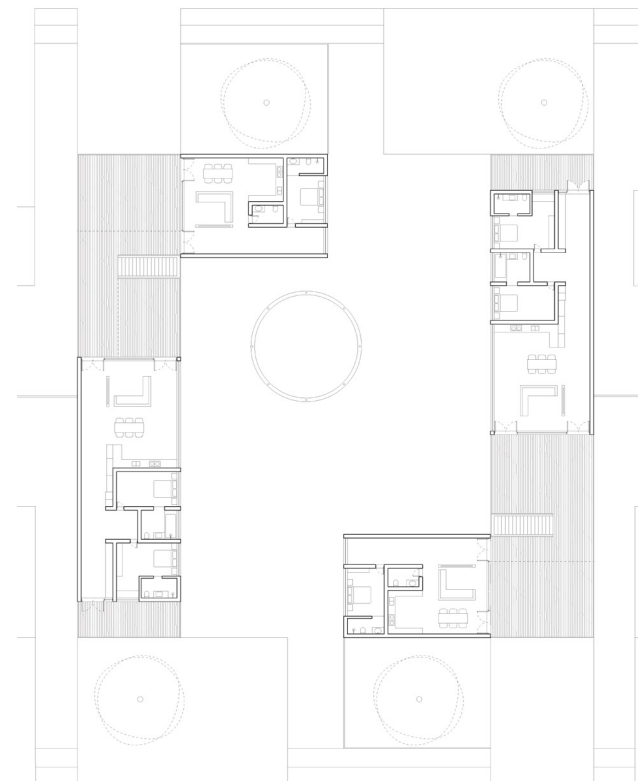
Cross Lot No. 2 Second Floor



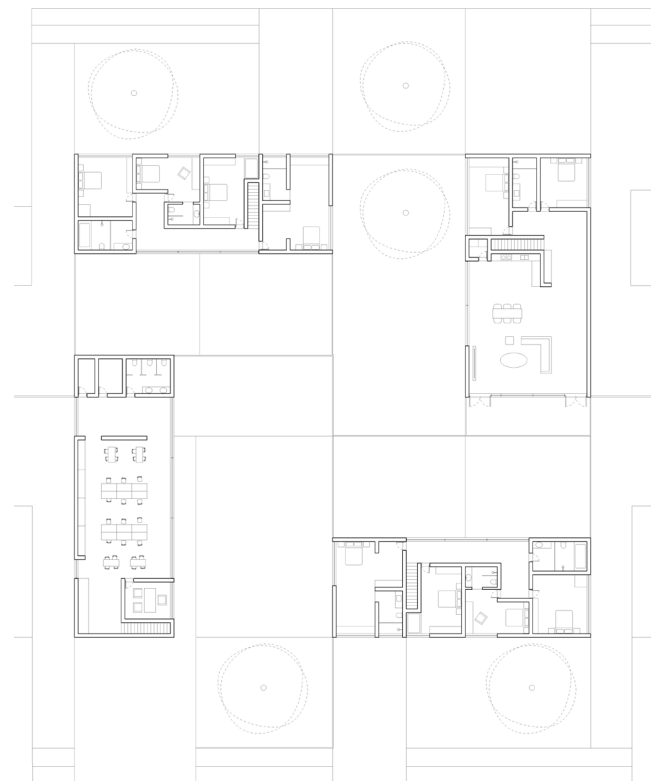
Through-Block Lot Second Floor



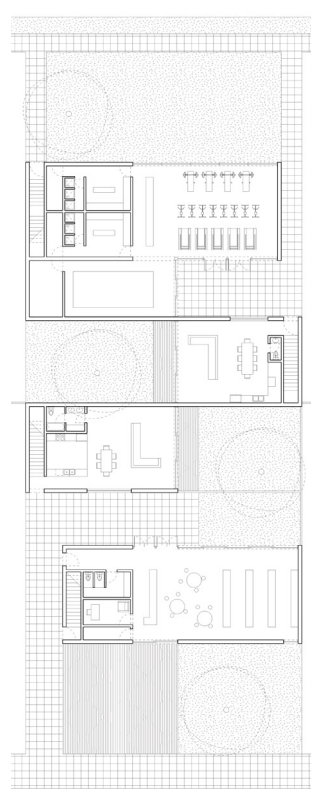
Courtyard Lot Second Floor



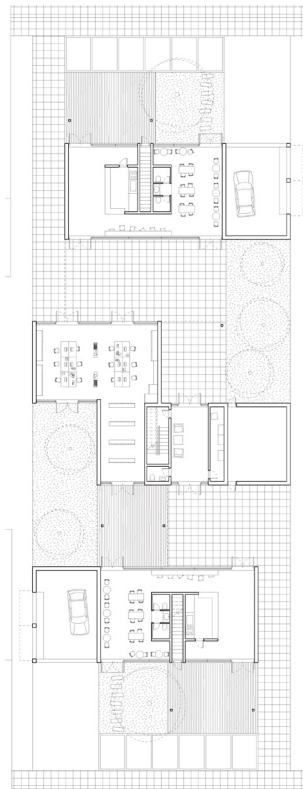
Open Lot Second Floor



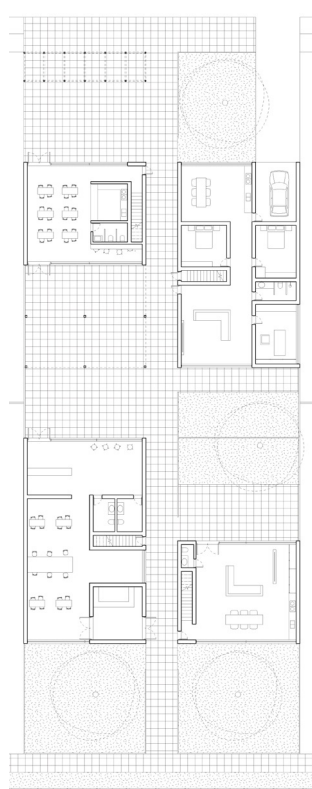
Hierarchy Lot Second Floor



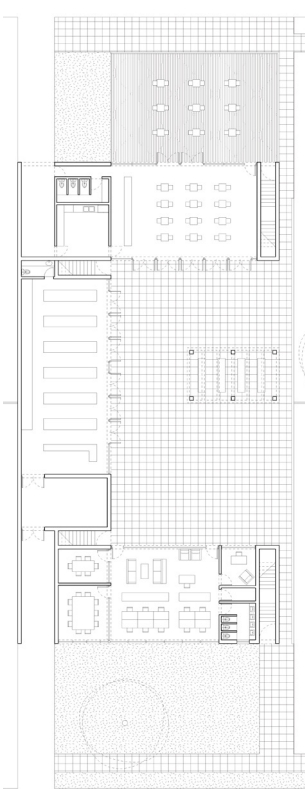
Cross Lot No.1 Ground Floor



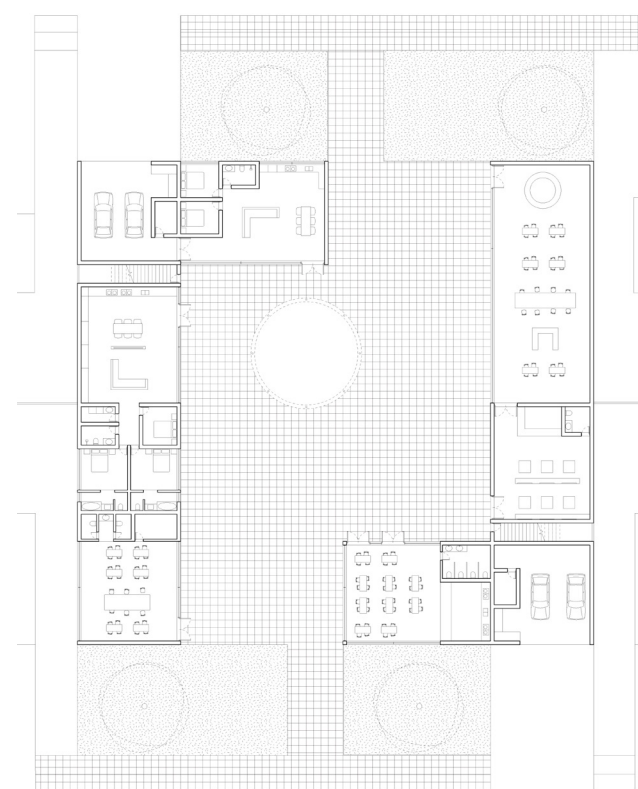
Cross Lot No. 2 Ground Floor



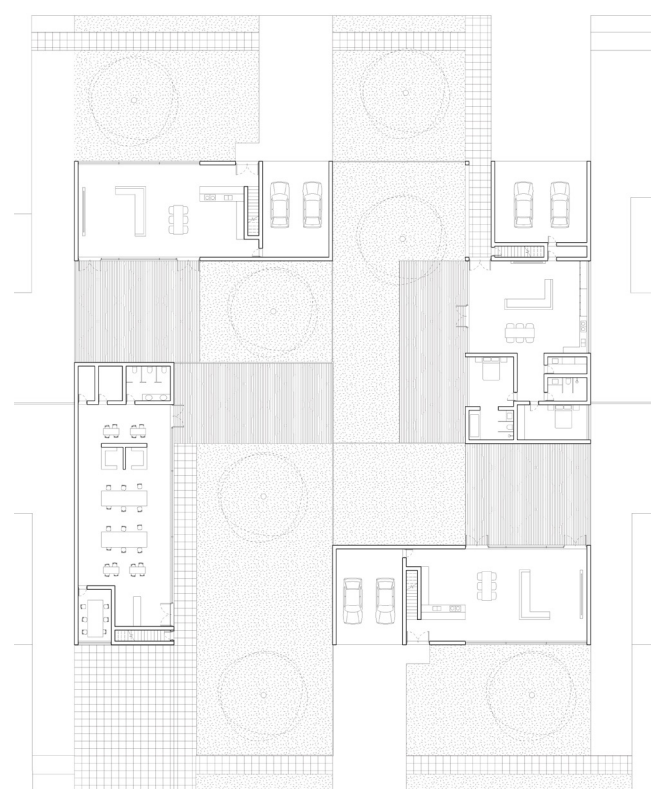
Through-Block Lot Ground Floor



Courtyard Lot Ground Floor



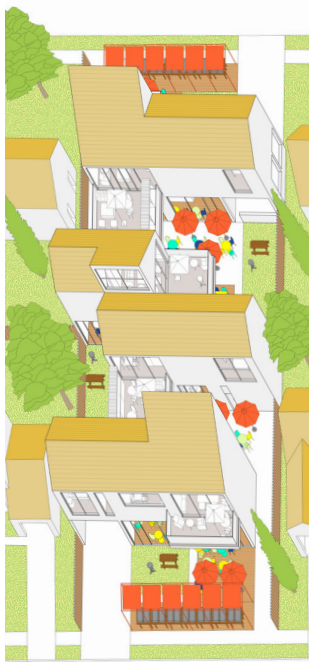
Open Lot Ground Floor



Hierarchy Lot Ground Floor



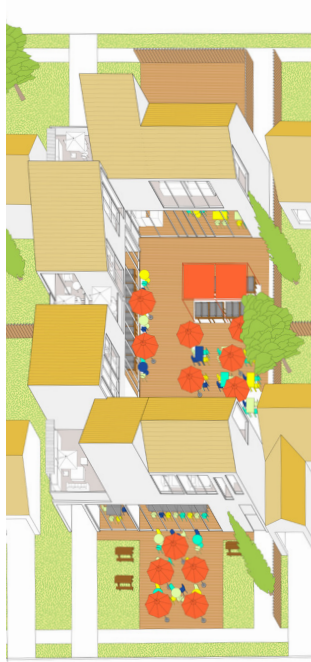
Cross Lot No. 1 Axon



Cross Lot No. 2 Axon



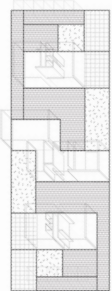
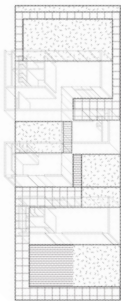
Through-Block Lot Axon



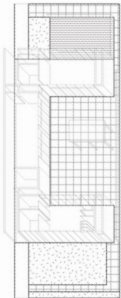
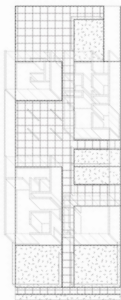
Courtyard Lot Axon

■ Gym
 ■ Restaurant
 ■ Cafe
 ■ Day Care
 ■ Market
 ■ Residential

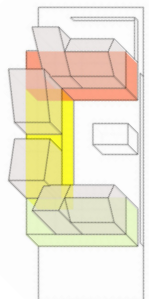
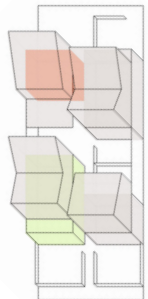
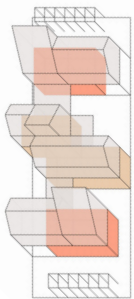
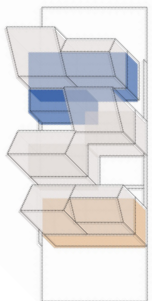
Pavement and Access



Through-Block Lot



Programs



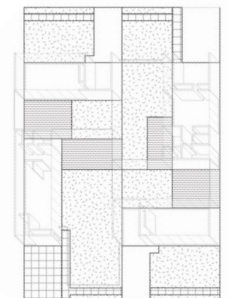
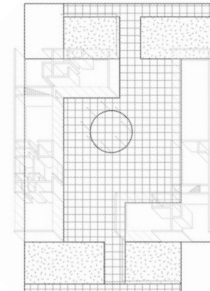
Open Lot Axon



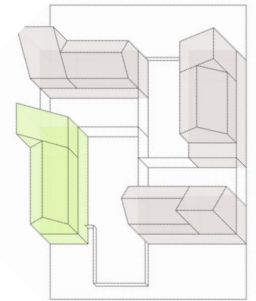
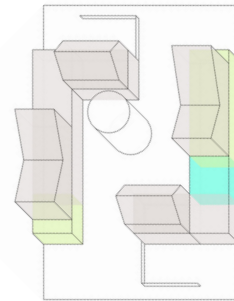
Hierarchy Lot Axon

■ Barbershop
 ■ Stone Pavement
 ■ Grass
 ■ Wood Deck

Pavement and Access



Programs



Pigeon Cage Office

Academic Spring 2021

Typology: Architecture Representation / Office

Syracuse University Beijing Visiting Critic Studio

Instructor: Li Han, Hu Yan

Location: Beijing, China

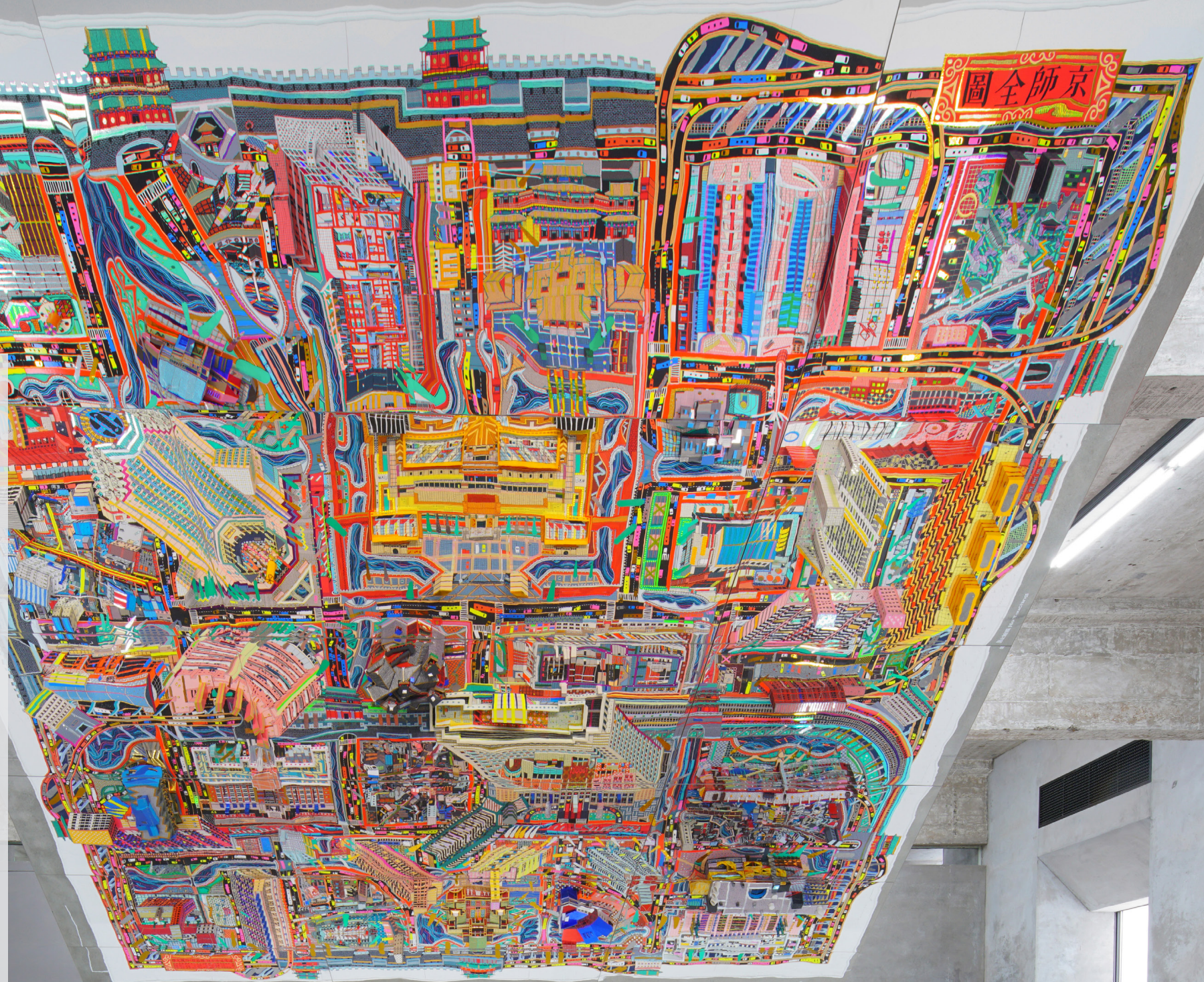
Design and model produced in collaborated with Yiqun Feng.

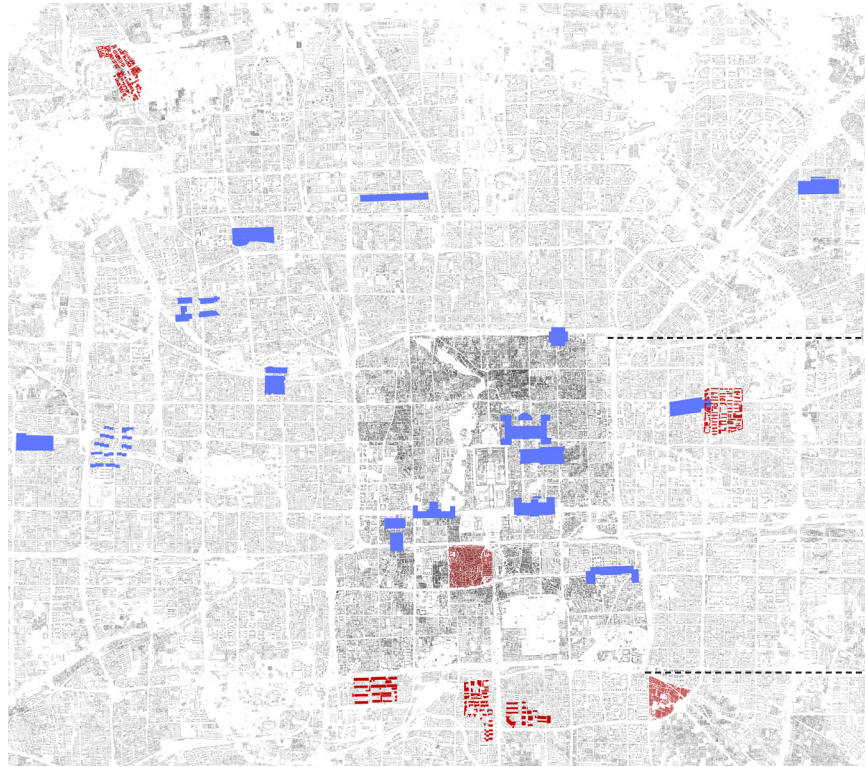
All drawings done by author.

The entire drawing "The Complete Map of Beijing" is done in collaboration with all 16 students in the studio.

The Complete Map of Capital Beijing is a 1:100 architectural diorama with the carefully composed drawings and the production of the three-dimensional models generating architectural languages through the techniques of copying that attempts to conceptualize the physical characteristics of the city of Beijing.

This studio pays special attention to Beijing's vernacular structures of the anti-theft windows, extended baywindows and balcony enclosure that rebel against the congested cityscape and surveys the areas with the most diverse vernacular constructions such as hutong and the old gated communities. The drawings and models intends to create an analogy of beijing's architecture of different temporalities and social classes while at the same time explore the depth of history by the layered physical constructions. Finally, the drawings retraces and replicates the most distinctive architectural characters, ambience, and charisma of the capital of China.

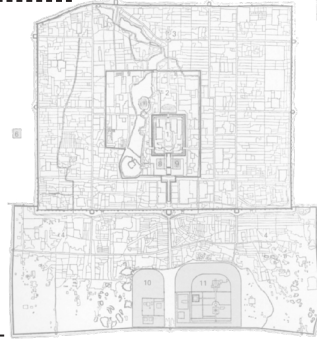




Urban fabric of Beijing highlighted with selected architectures and urban areas



1



2

1. The Original "Complete Map of Beijing" (1744)
2. Accurate plan of Beijing from the Qing dynasty (1750)



a



b



c



d

- a. Slabbed Gated Communities
- b. Towered Gated Communities
- c. Urban Villages
- d. Hutong



1



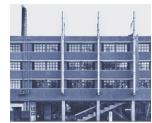
2



3



4



5



6



7



8



9



10



11



12



13



14

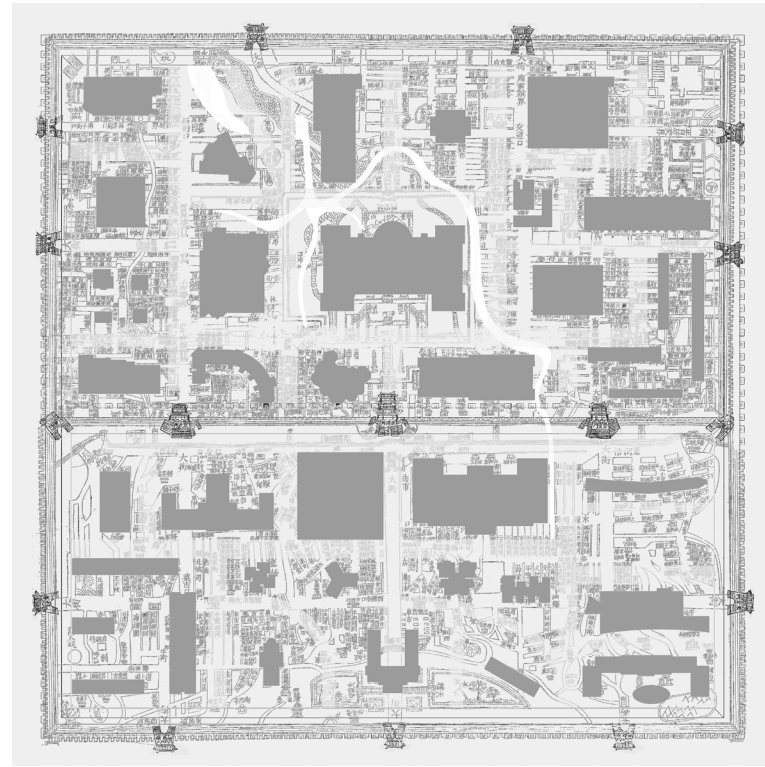


15

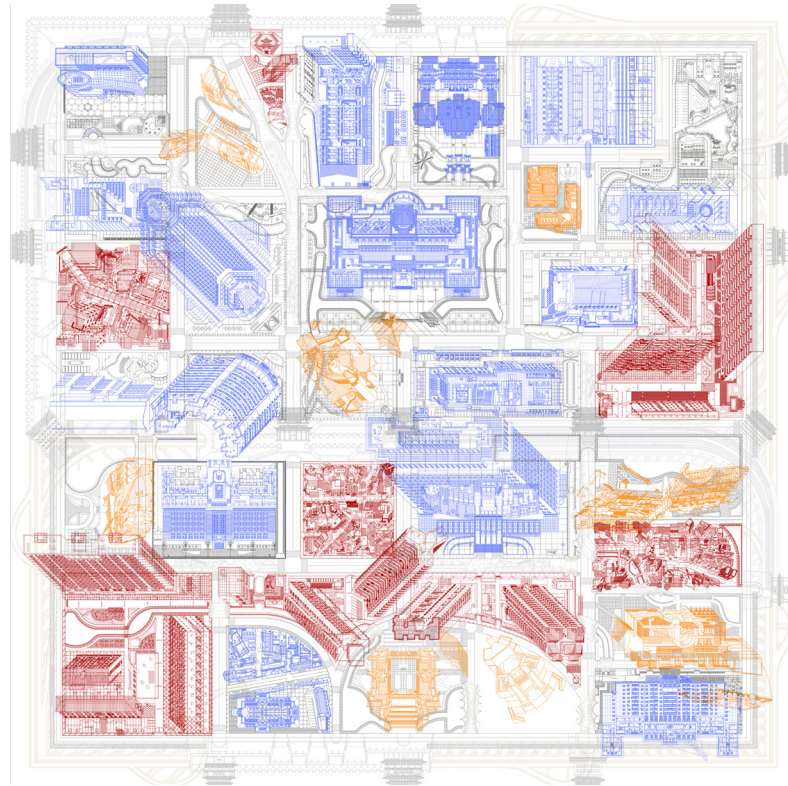


16

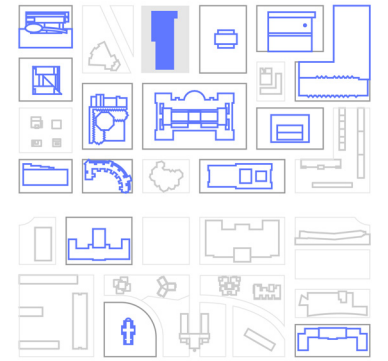
1. Red-brick Art Gallery, 2014
2. EPark Collaborative Office, 2014
3. Xiyuan Hotel, 1984
4. Beijing Hotel, 1990
5. UCCA At Center, 2007
6. Foreign Language Teaching and Research Press, 1979
7. OSGH Cinemas, 2014
8. National Art Museum of China, 1962
9. Dinghui Xili Building no. 1, 1990
10. Anglican Church of China, 1979
11. Beijing Capital Theater, 1956
12. Beijing Haidian Civil Affairs Bureau, 1999
13. The Anhua Building, 1960
14. YongHeGong Lama Temple Falun Hall, 1694-2015
15. Telegraph Building, 1953
16. Beijing Jidiyuan Corporation, 1907



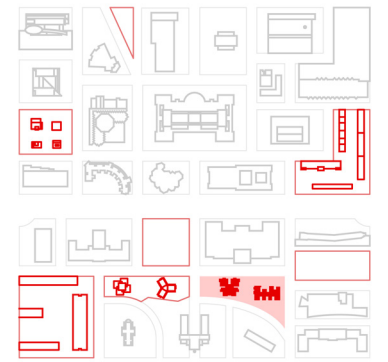
"The Complete Map of Beijing" with new spatial imagination



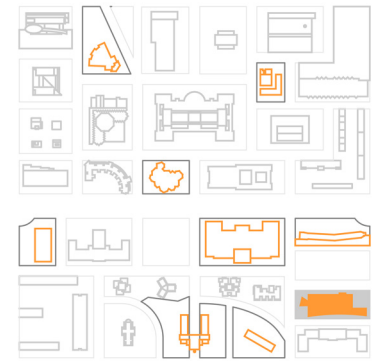
X-ray of the artificial city with three types of urban space combined.



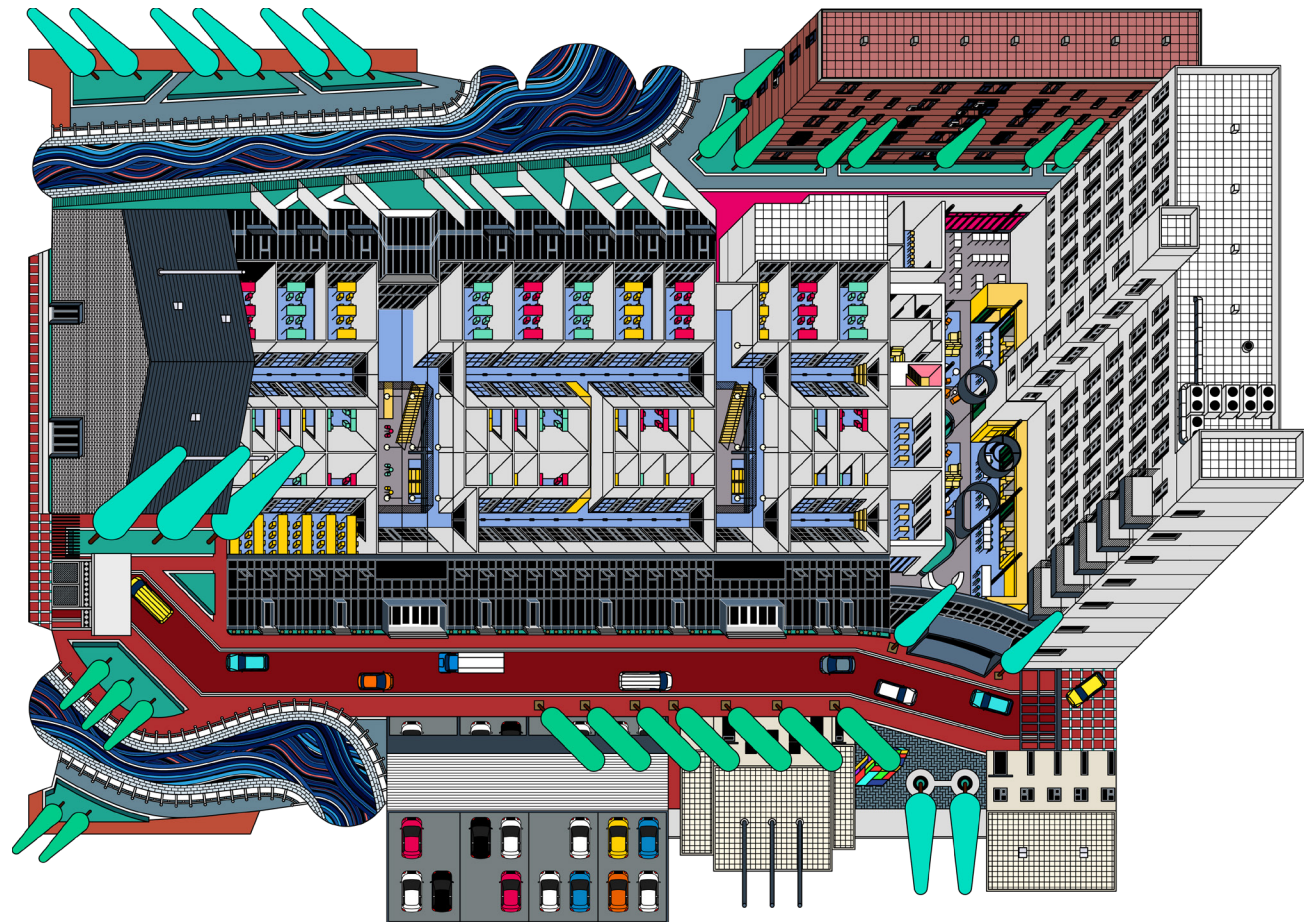
- Sixteen **iconic architectures** highlighted in blue singles out the architectures during the movements of Beijing's modern constructions of the twentieth century.



- Four types of **urban spatial configurations** highlighted in red shows two urban villages, one remnant of the traditional Hutong, two towered gated communities and two slabbed gated communities.

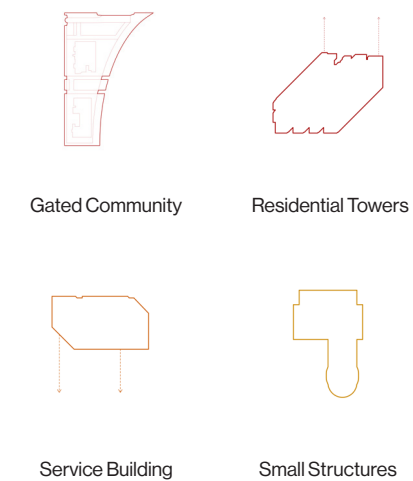
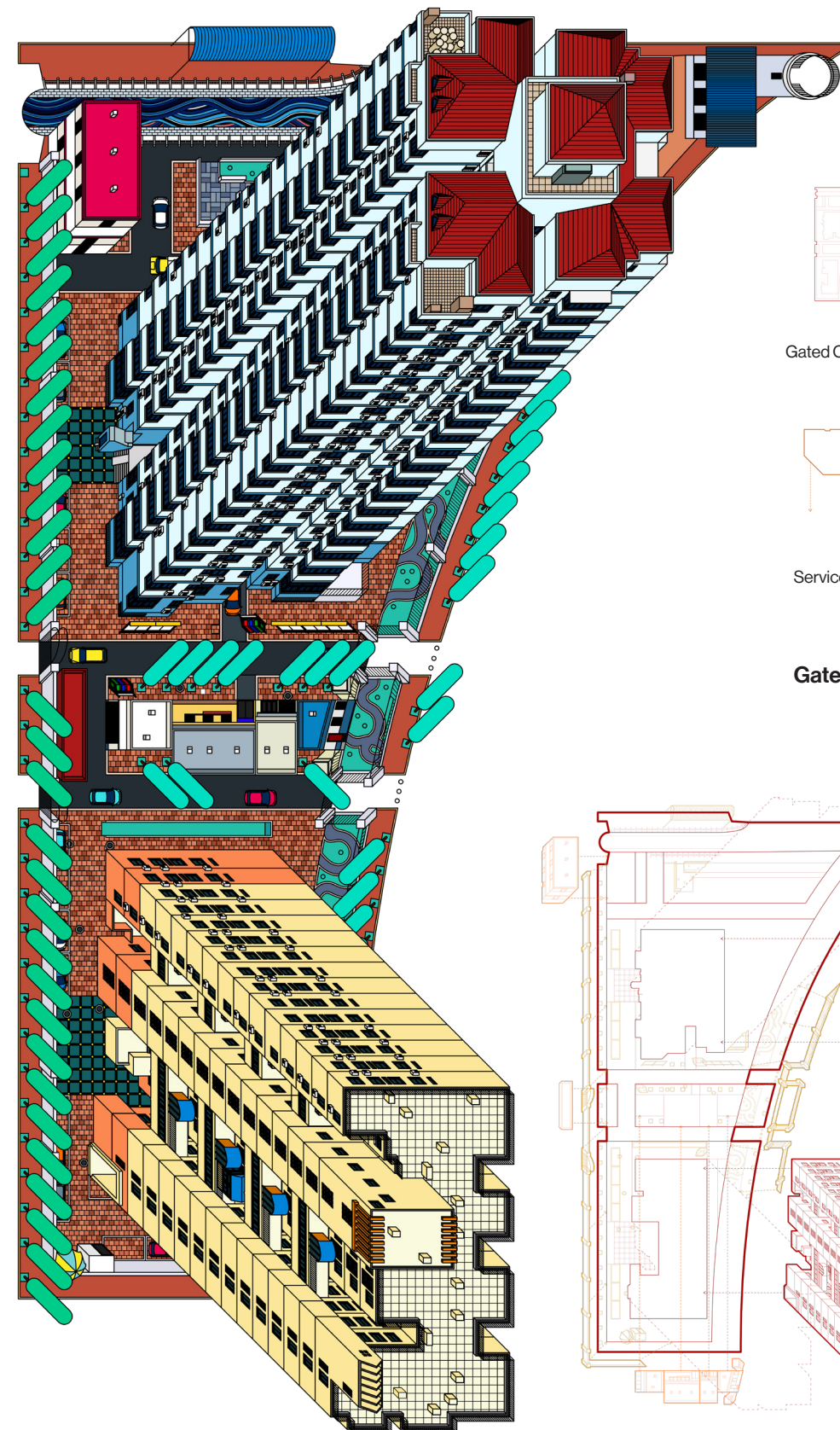
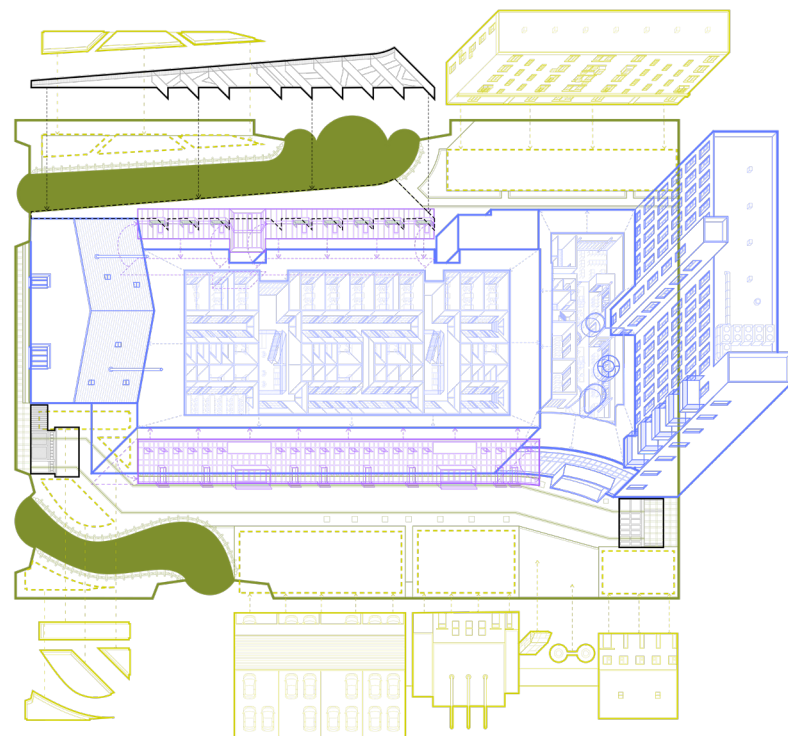
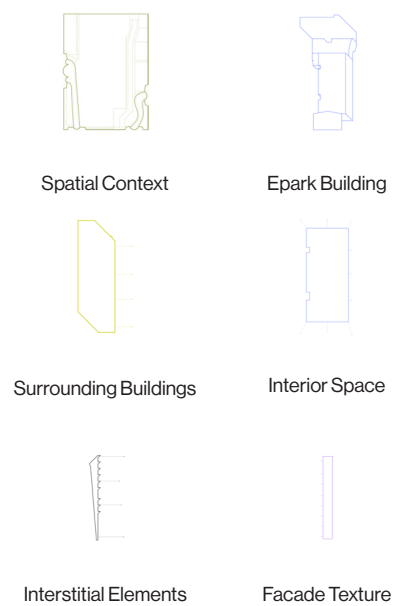


- Nine **new architectural interventions** highlighted in orange is designed with transcriptions of Beijing's vernacular architectural language onto the historical canonical architectures.



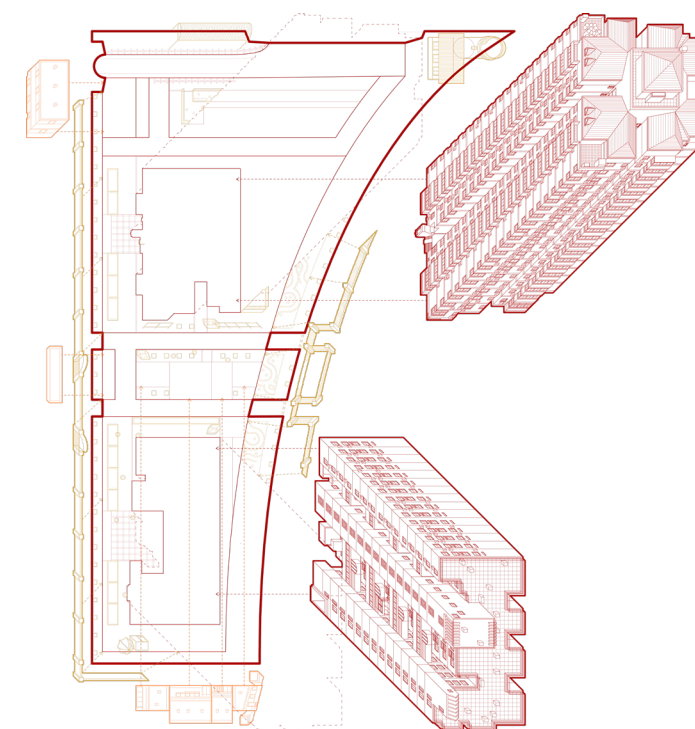
EPark (Co-Working Office), 2014

Former Beibingyang Soda Factory
25 N Huanyuan Rd, Bldg 1, Beijing



Gated Community, 1990s - 2000s

14 Hepingli North Street, Beijing
8 Hinghua Road, Beijing



1. Survey: [Beijing Vernacular Architectures]

Patterns, Geometries, Colors and Added Structures



[Red Paint Ribbons]

[Bay Windows]

11 Guangmingbeili N, Beijing



[Anti-theft Windows]

[Steel Roof Panels]

4 Anwai Avenue, Beijing



[Bay Windows]

[Steel Roof Panels]

3 Huagongdayuan Community, Beijing



[Anti-theft Windows]

[Steel Roof Panels]

9 Anhuali, Beijing



[Circular Bay Windows]

[Anti-theft Windows]

2 Anhuali, Beijing



[Pigeon House]

[Anti-theft Windows]

2 Anwai Avenue, Beijing



[Steel Roof Panels]

[Anti-theft Windows]

1 Anwai Avenue, Beijing

2. Feed: [Post Modernist Architectural Language]

K2 Building, Kazuo Shinohara, Tokyo



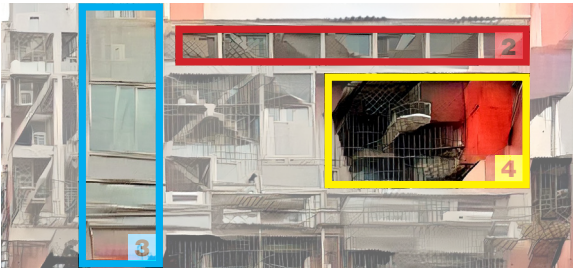
3. Merge: [AI Image Synthesis]

ostagram Image Generator

2. Feed: [Beijing Building Facades]



15 Qingnianhu Community



181 Anwai Avenue



3 Anwai Avenue

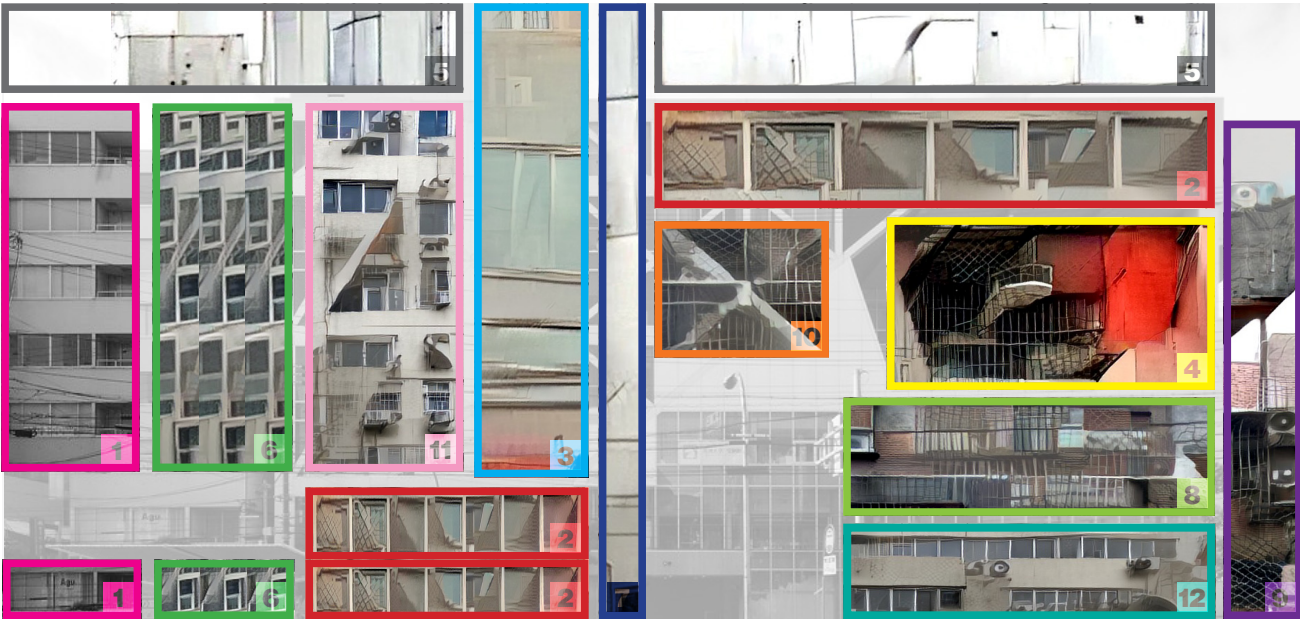


10 Xiaohuang-zhuang Rd



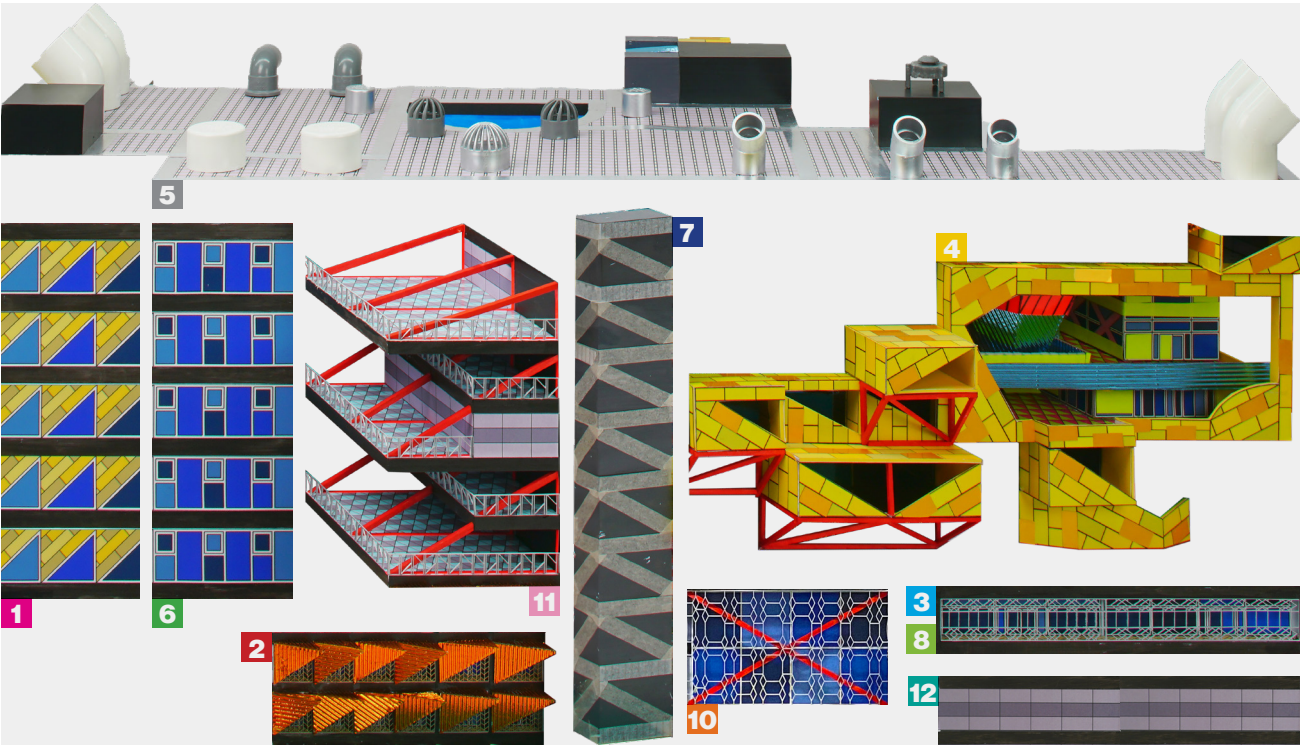
4. Collage: [Composing Facade Features]

Post-modernist Spatial Geometries and Beijing Vernacular Facade Expressions

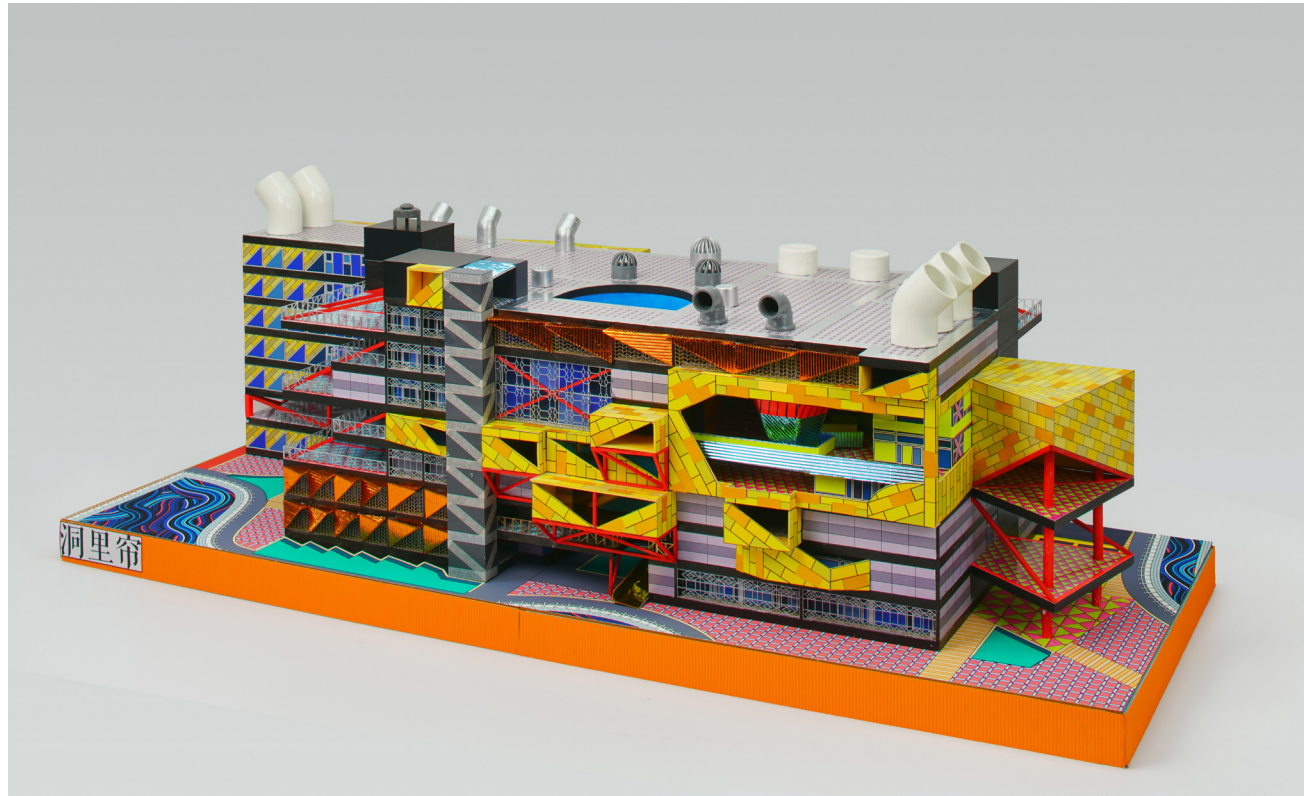


5. Interpret: [New Structures and Facade Elements]

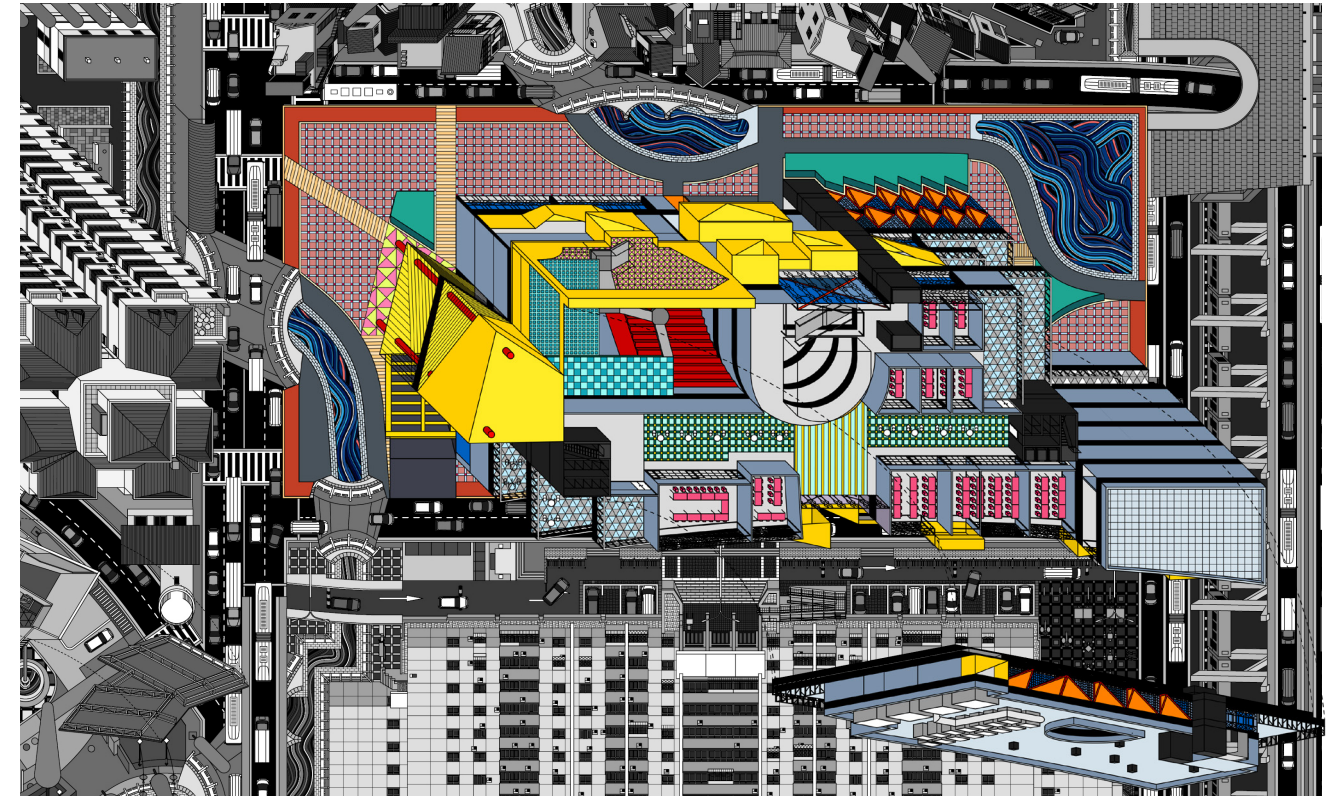
Post-modernist Spatial Geometries and Beijing Vernacular Facade Expressions



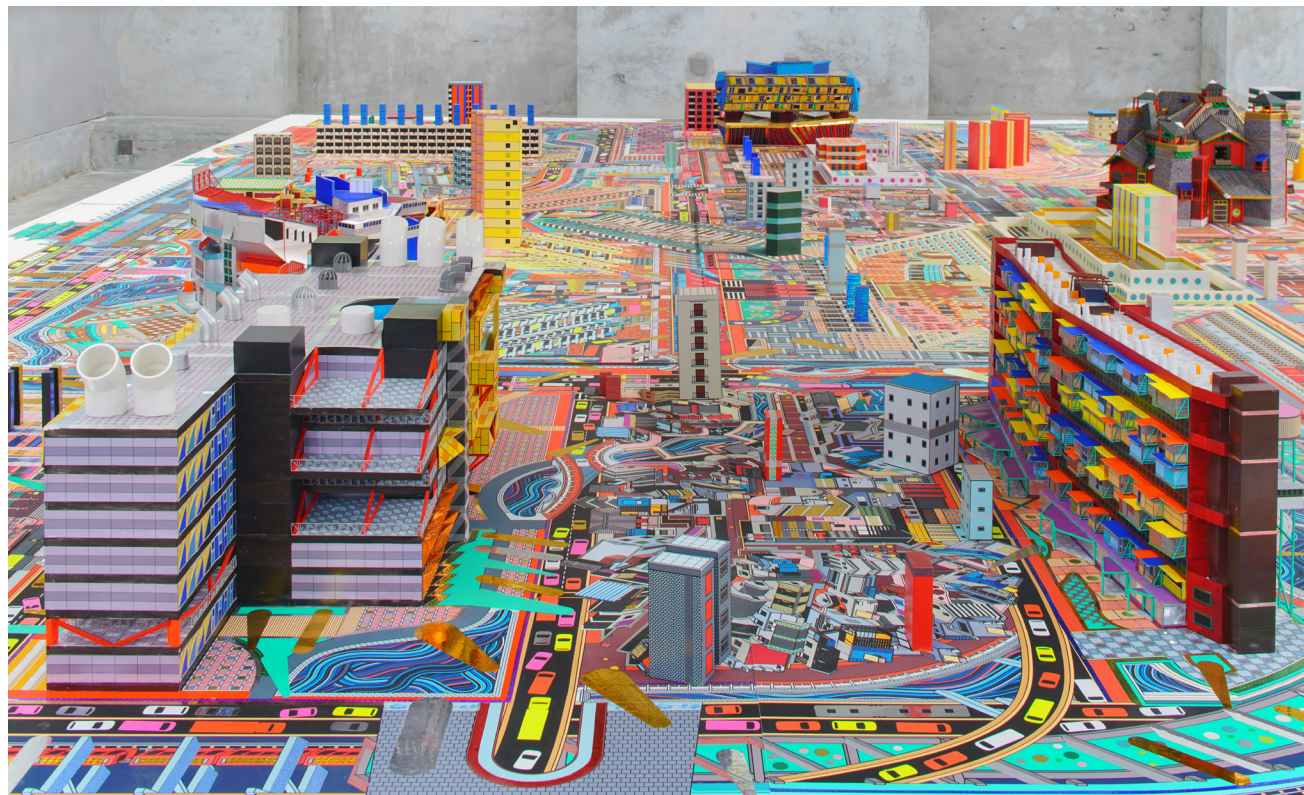
The major urban elements that have been referenced are the wild growing illegal balconies and security windows. In the design, the cell-like and grided forms turns into retreated balconies encased within metal frame curtains and yellow balcony extensions that colonizes the original surfaces.



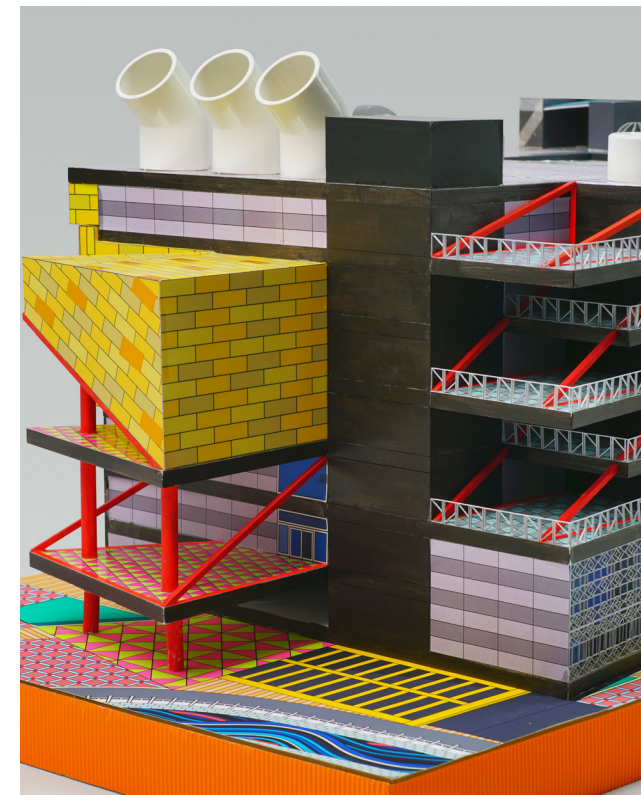
Pigeon Cage Office EModel North West View



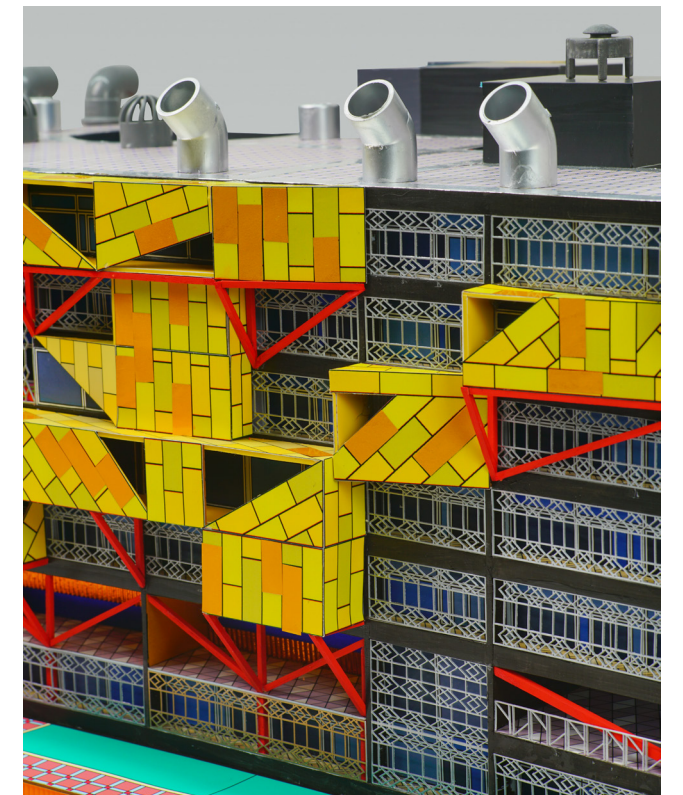
Pigeon Cage Office Exploded Axon and Immediate Context in "The Complete Map"



Pigeon Cage Office Model and Immediate Context in "The Complete Map"



Pigeon Cage Office North West Facade Detail



Pigeon Cage Office South Facade Detail

Professional, Drawing Architecture Studio Internship

"Learning from Macau" (Left). I was in charge of creating the drawings of the center piece buildings of the major illustrations and other irregular compositional elements such as the railway, cone shaped buildings and etc. "Donngbei Renaissance" (Right). Helped with coloration and post processing of the drawing details.



"Learning from Macau" Mural on The Handover Gifts Museum of Macao



"Donbei Renaissance" Drawing Detail



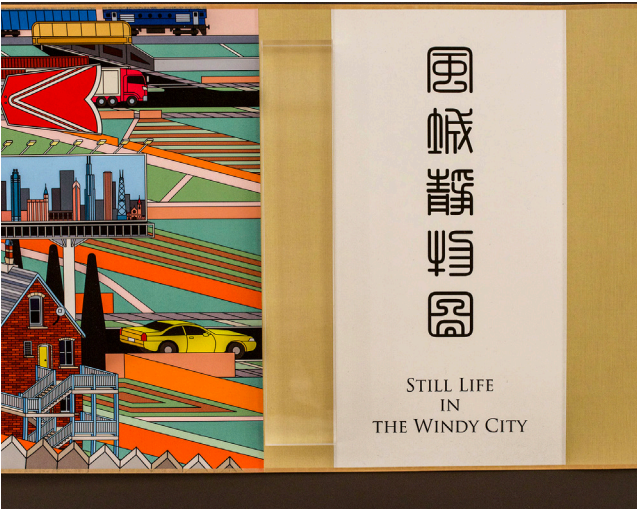
"Learning from Macau" Drawing Detial



"Donbei Renaissance" Mural at Dongmaoku, Shenyang

Professional, Drawing Architecture Studio Internship

"Still Life in the Wind City". I was in charge of designing one of the community engagement scenes illustrated in the drawing, including concept, content, compositions and lineworks.



"Still Life in the Wind City" Printed Drawing Detail



"Still Life in the Wind City" Printed Drawing Detail



"Still Life in the Wind City" Illustration.

1017 Triphammer Rd, #1, Ithaca, NY, 14850
t: (680) 356 5207 | e: xt245@cornell.edu



Thanks for your time.