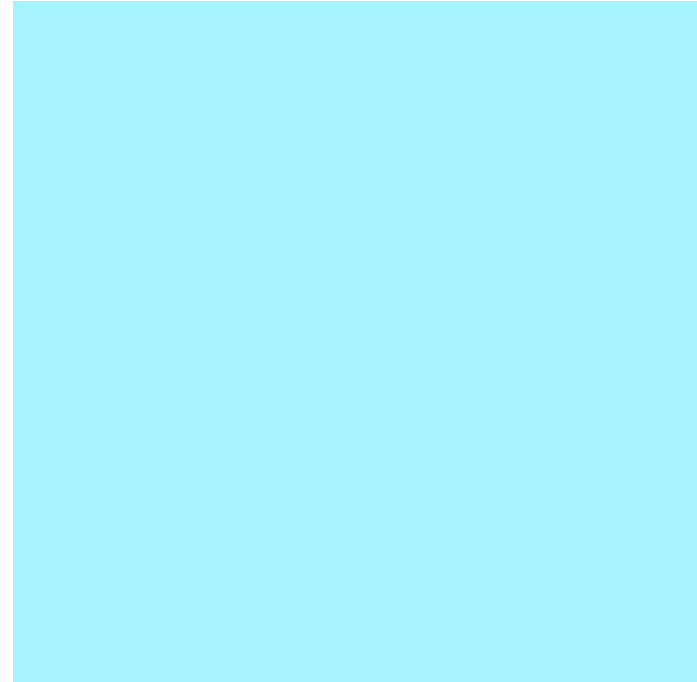


# **MAHARI KIT ARCH PORTFOLIO**

**SELECTED ACADEMIC WORKS 2019-2024**



# TABLE OF CONTENTS



## T H E N E S T

**Typology** Mixed-Use Art Center  
**Location** Brooklyn, New York  
**Professor** Peter Pittman  
**Date** Fifth Year, Spring 2024

**3-10**

## BLK. ARCHIVE

**Typology** Museum  
**Location** Atlanta, Georgia  
**Professor** Trace Gainey  
**Date** Third Year, Fall 2022

**11-18**

## **CURVE CHATEAU**

**Typology** Residential  
**Location** Marietta, Georgia  
**Professor** Simon Hoffiz  
**Date** Second Year, Fall 2020

**19-24**

## **PERSONAL WORKS**

**Paintings**  
**Digital Illustrations**  
**Graphic Compositions**

**25-28**

# THE NEST

Between Art and Architecture: Curating Space for Creatives

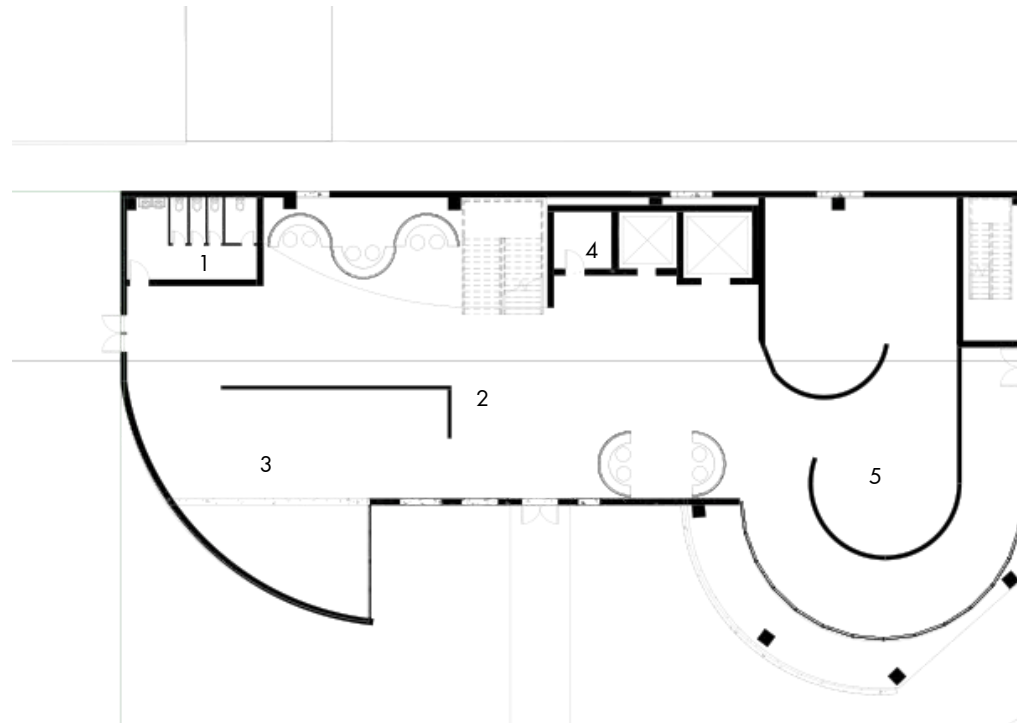
<b>Typology</b>	Mixed-Use Art Center
<b>Location</b>	Brooklyn, New York
<b>Professor</b>	Peter Pittman
<b>Date</b>	Fifth Year, Spring 2024

As my final thesis, "Between Art and Architecture: Curating Space for Creatives," The Nest is designed with the ethos that art is not merely a product but a dynamic process thriving on interaction and exchange. Located in East Flatbush, The Nest is a synthesis of community input and precedent analysis. It offers a blend of coworking areas, private studios, and shared facilities, all meticulously tailored to meet the multifaceted needs of artists. The layout encourages serendipitous encounters and cross-disciplinary collaboration while providing quiet spaces for focused work.

Drawing on the metaphor of a nest, the design creates a warm and supportive environment where artists can incubate their ideas, nurture their talents, and flourish creatively. With ample resources, guidance, and opportunities for growth, The Nest aims to be more than just a physical space—it seeks to be a catalyst for personal and societal transformation through the power of art.



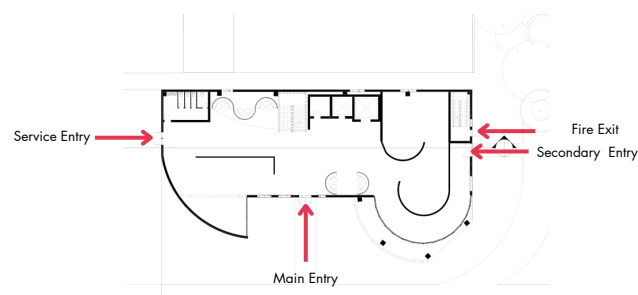
## FIRST FLOOR PLAN



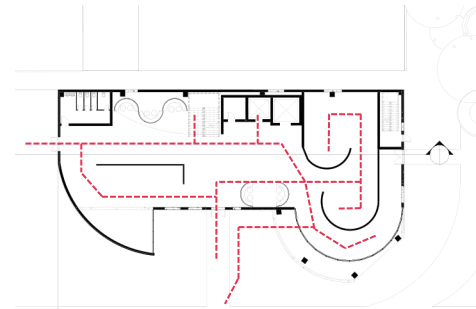
### Program Legend

- 1 Bathroom
- 2 Lobby
- 3 Multipurpose Room
- 4 Mechanical Room
- 5 Gallery

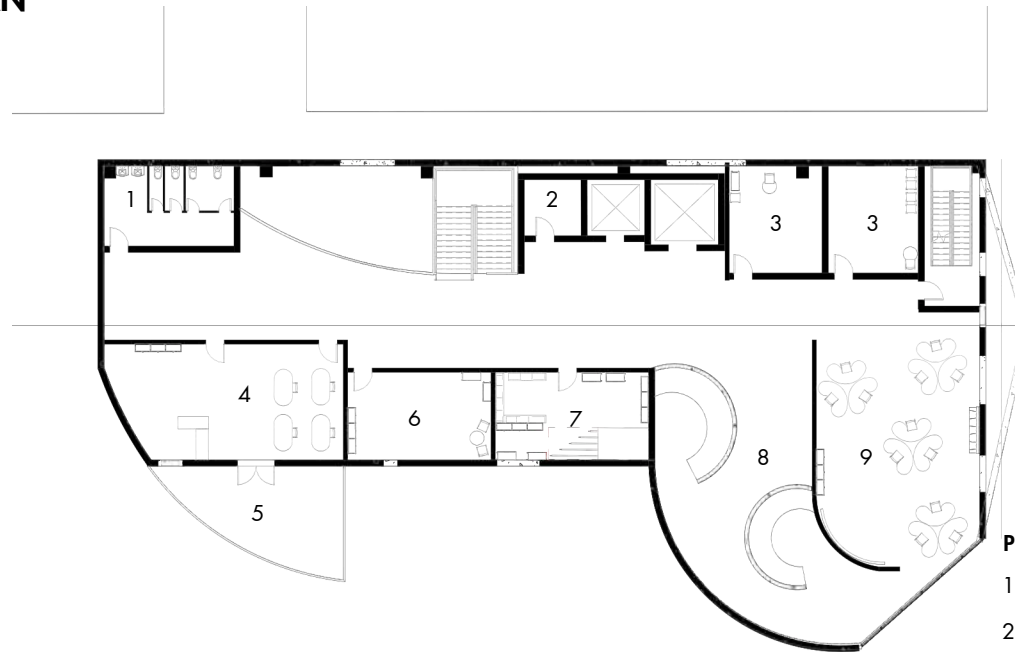
### Access to Building



### Circulation Path



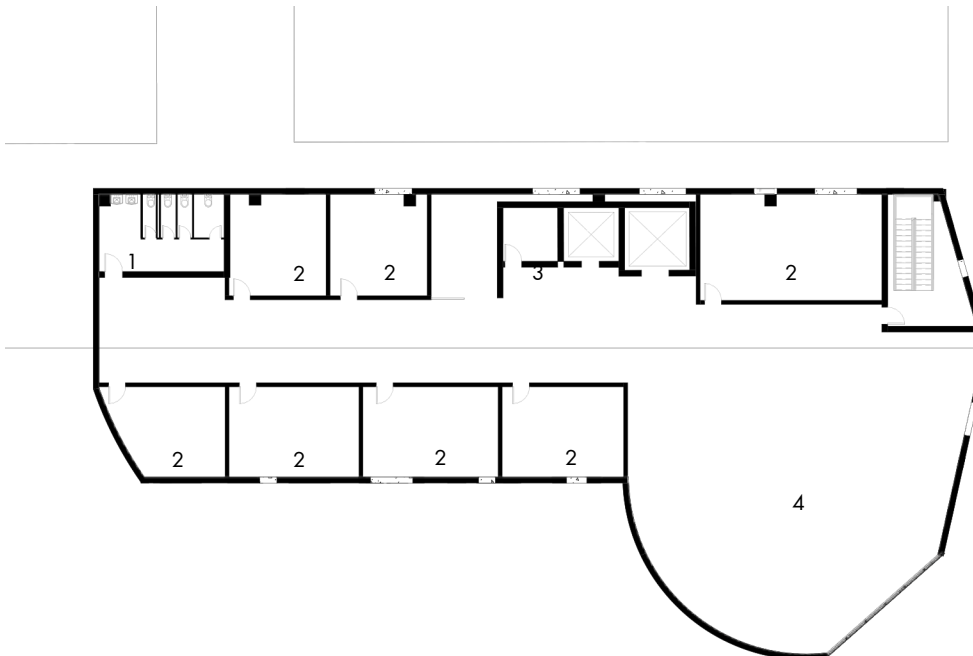
## SECOND FLOOR PLAN



### Program Legend

- |                   |                     |
|-------------------|---------------------|
| 1 Bathroom        | 6 Studio            |
| 2 Mechanical Room | 7 Materials Storage |
| 3 Private Studio  | 8 Lounge            |
| 4 Classroom       | 9 Makerspace        |
| 5 Outdoor Patio   |                     |

## THIRD FLOOR PLAN



### Program Legend

- |                     |
|---------------------|
| 1 Bathroom          |
| 2 Studio            |
| 3 Mechanical Room   |
| 4 Multipurpose Room |

## INTERIOR PROGRAM

### Maker Space | Learn



This creative makerspace is a dedicated room within a building where people gather to **design, build, and innovate**. It's equipped with tools like 3D printers, laser cutters, and woodworking equipment, enabling users to create everything from art installations to tech prototypes. It's a **collaborative environment** where individuals share ideas and skills, fostering a culture of creativity and experimentation.

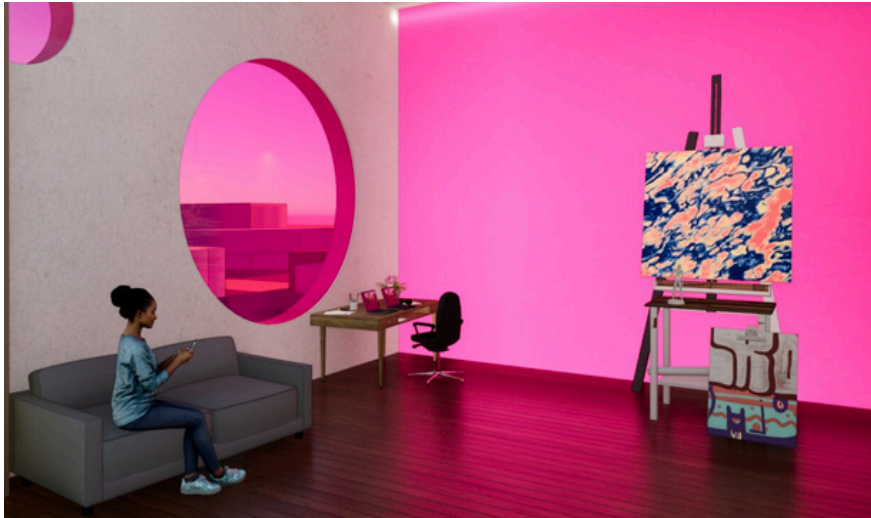
### Multi-functional Space | Speak



This **adaptable multipurpose** space offers endless possibilities for utilization, providing the flexibility to be rearranged and customized to suit the specific requirements of diverse **events, exhibitions, or workshops**. It can be used as a space for an artist talk, exhibition or for hosting community events.



## Artist Studio | Create



A private art studio is a **personal sanctuary** within The Nest, exclusively dedicated to an individual's creative endeavors. It's a secluded space where artists can immerse themselves in their work, **free from distractions**.

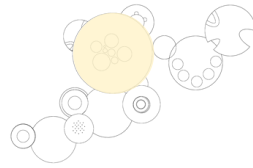
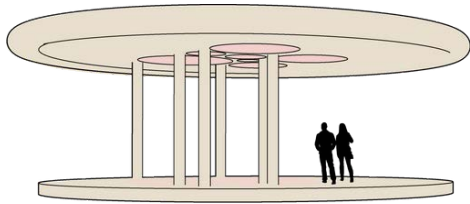
## Lobby | Mingle



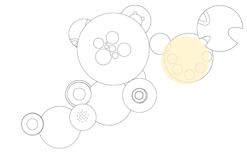
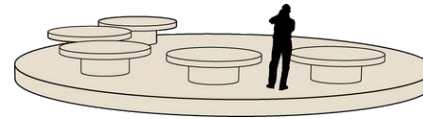
This dynamic area is designed for mingling, offering you the perfect opportunity to **meet other creators and engage with members of the local community**. Whether you're here to share innovative ideas, collaborate on exciting projects, or simply enjoy the company of like-minded individuals, the lobby serves as a hub for fostering new relationships and nurturing the creative spirit.

## PAVILION ACTIVITY MAPPING

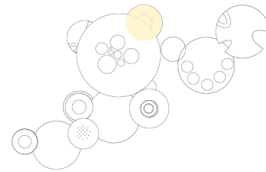
### Chromatic Immersive Space



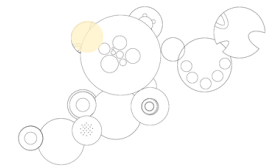
### Artist Showcase



### The Roundtable



### Versatile Seating



The pavilion's current functions include the Chromatic Immersive Space, which engages visitors with color and sensory exploration; the Artist Showcase, enhancing artist visibility and connections with potential buyers; the Roundtable, fostering discussions and creative collaboration; and Versatile Seating, offering adaptable arrangements for relaxation, socializing, and impromptu performances.

## EXTERIOR PROGRAM

### Aerial View | Exterior Pavilion



The pavilion aims to create an immersive environment where visitors engage with color, **sparking creativity and sensory exploration**. It enriches aesthetics, enhances artist visibility, and fosters connections between artists and buyers. As a hub for discussions, workshops, and creative collaboration, the pavilion promotes community involvement and inclusivity. Adaptable seating and a welcoming ambiance encourage interaction, making it a central spot for artistic innovation and a **sense of belonging**.

# BLK ARCHIVE

<b>Typology</b>	Museum
<b>Location</b>	Atlanta, Georgia
<b>Professor</b>	Trace Gainey
<b>Date</b>	Third Year, Fall 2022

Located in Atlanta, Georgia, the BLK Archive is a museum dedicated to showcasing the diverse works of Black creatives across various mediums. Its design philosophy draws inspiration from the concept of transparency, reflecting how Black artists reveal their innermost sentiments through their creations. This approach provides visitors with profound insights into the richness of Black history, life, community, and the challenges faced by Black individuals.

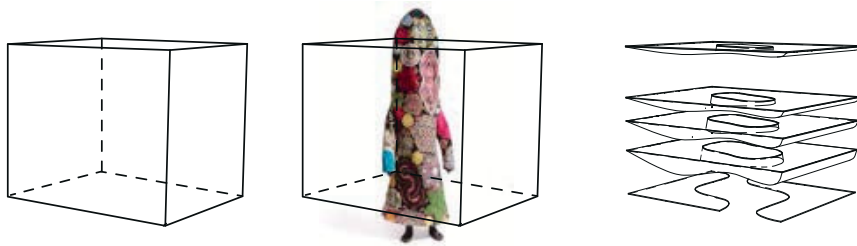
The museum includes exhibition spaces, offices, lounges, and a café. The creative process involved a thorough analysis of artworks by various Black creatives, extracting their distinctive shapes to craft voids within the space. This design not only honors the uniqueness of each artist but also creates an environment that encourages exploration and appreciation of Black art and culture.





## DESIGN CONCEPT

### Form Exploration



Inspired by Nick Cave's 'Soundsuits,' this project embodies a harmonious convergence of art and architecture. The incorporation of these dynamic shapes adds visual interest and shapes the spatial experience, creating an immersive environment. Positioning the Soundsuit within the site's boundary box created a void in the building, enhancing its unique design.

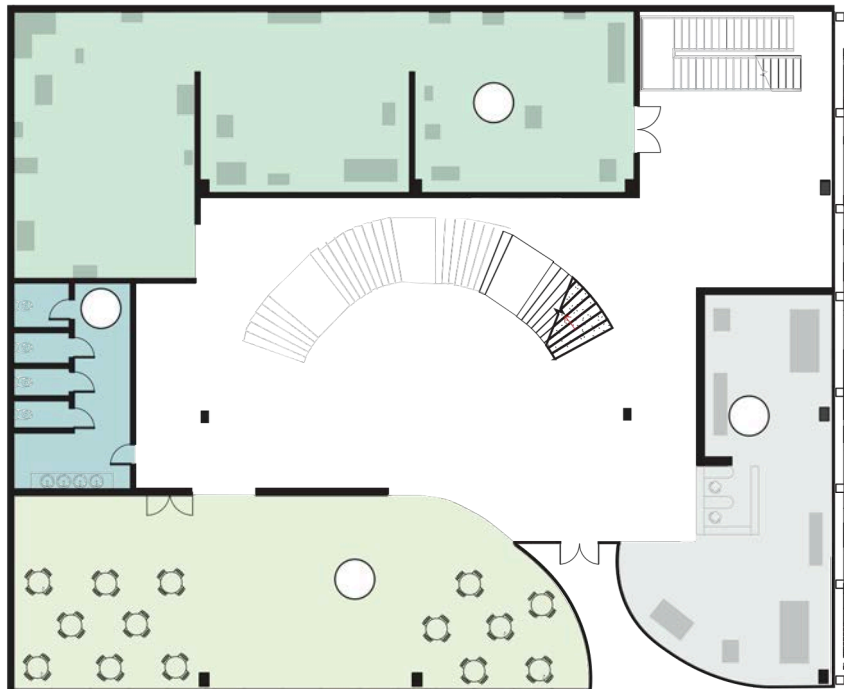
### Facade Exploration



This facade draws inspiration from artist Nick Cave's mesmerizing mosaic murals, seamlessly blending vibrant artistry into the architectural canvas. The result is a harmonious integration that infuses the space with a captivating interplay of form, creating dynamic patterns of light and shadow.

## FLOOR PLANS

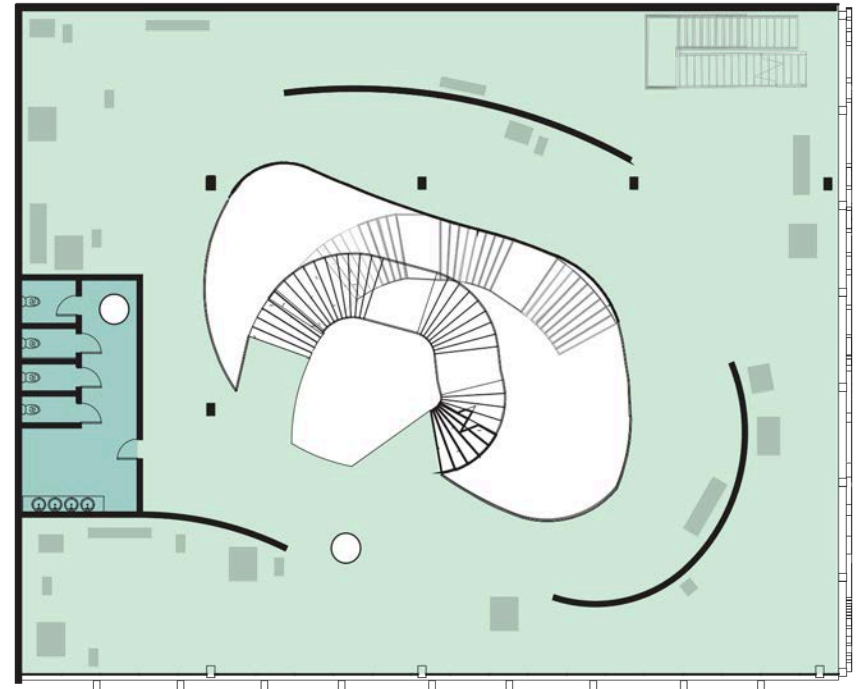
First Floor



### Program Legend

- 1 Exhibition Space
- 2 Bathroom
- 3 Lobby/ Lounge
- 4 Gift Store
- 5 Outdoor Patio

Second Floor



### Program Legend

- 1 Exhibition Space
- 2 Bathroom

## INTERIOR RENDERS

### Fashion Exhibition Space



The Fashion Exhibition space showcases the innovative designs of Pyer Moss, the acclaimed fashion brand by designer Kerby Raymond. This space highlights Raymond's unique blend of fashion and social commentary, featuring his bold and thought-provoking collections.

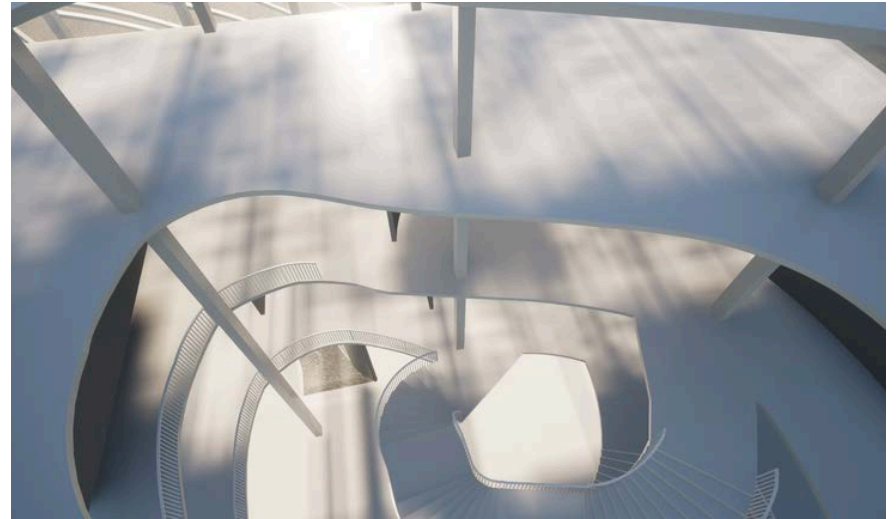
### Immersive Experience Space



This floor is for immersive experiences in this render it showcases Nick Cave's vibrant mosaics. This area envelops visitors in a dynamic and colorful environment, offering an engaging and sensory-rich experience that highlights Cave's intricate and expressive artwork.

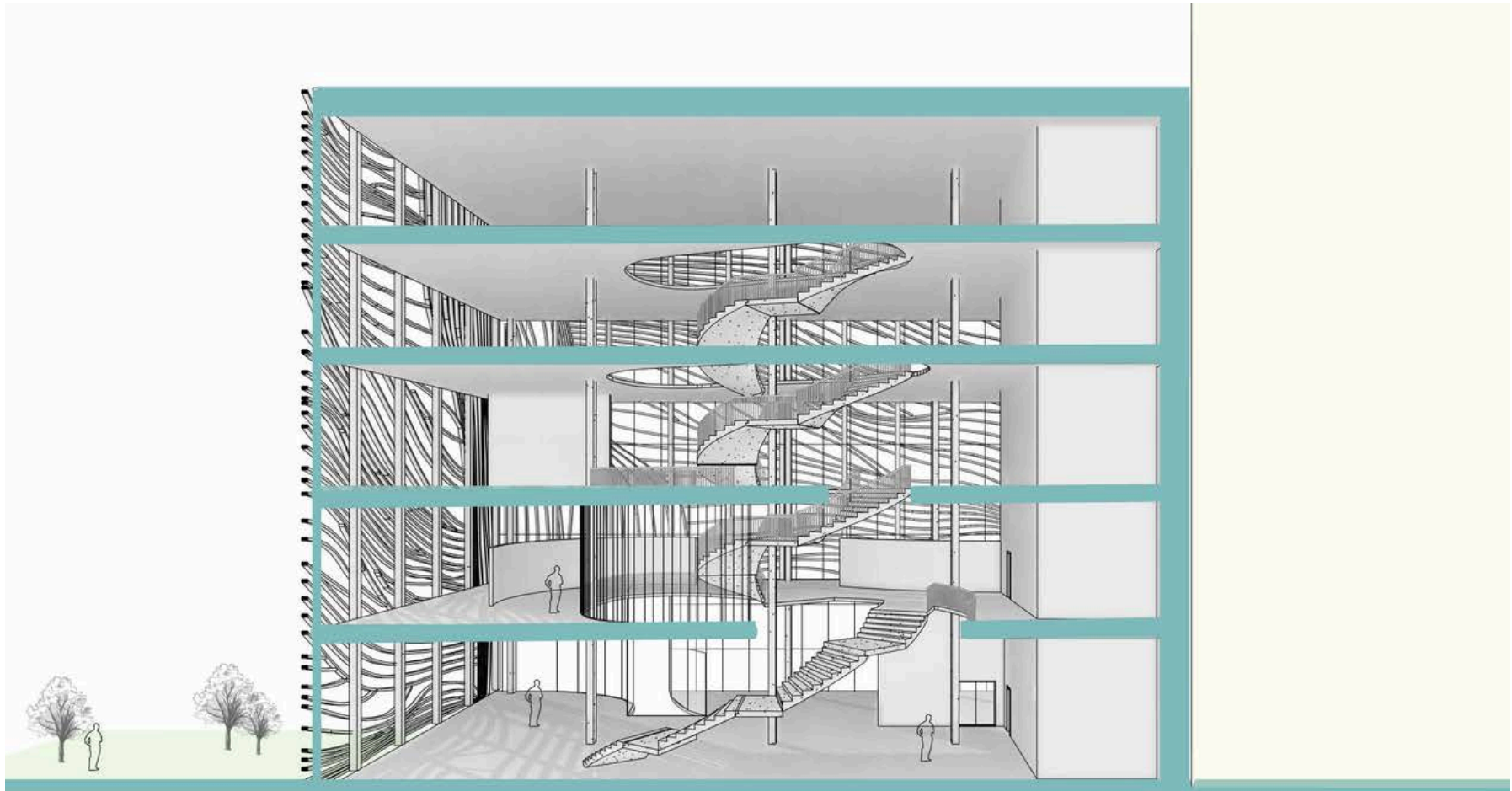


## Atrium



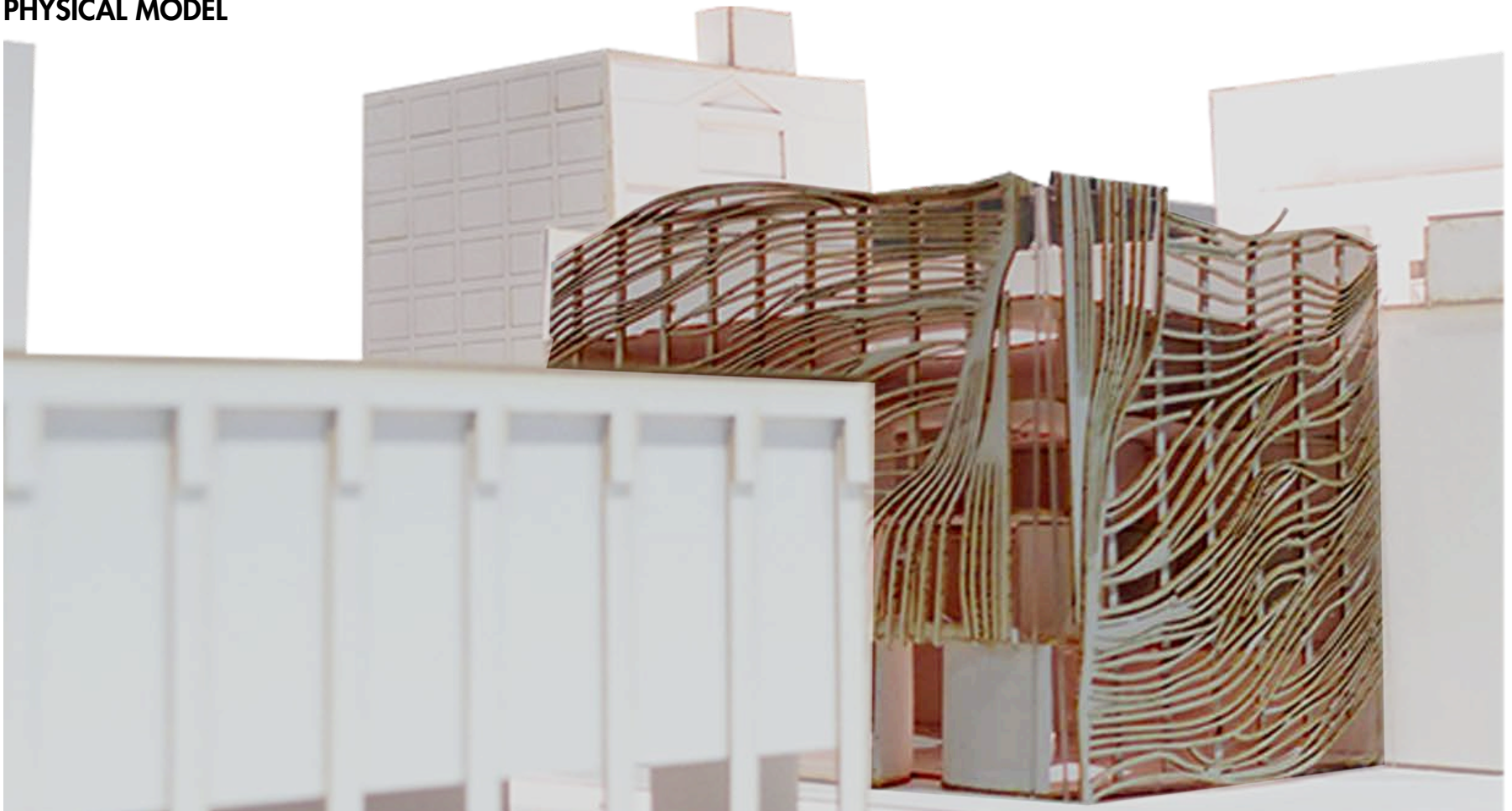
This dynamic design element shapes the spatial experience, fostering a harmonious convergence of art and architecture.

## SECTION



Inspired by Nick Cave's 'Soundsuits,' the circular atrium extends from the bottom floor to the top, creating an open museum that signifies open exchange. This dynamic design element shapes the spatial experience, fostering a harmonious convergence of art and architecture. The void created by positioning the Soundsuit within the site's boundary enhances the building's unique design, adding visual interest and creating an immersive environment.

## PHYSICAL MODEL



This physical model, crafted by laser cutting and assembling museum board and acrylic, also depicts the surrounding context of the BLK Archive.

# CURVE CHATEAU

<b>Typology</b>	Residential
<b>Location</b>	Marietta, Georgia
<b>Professor</b>	Simon Hoffiz
<b>Date</b>	Second Year, Fall 2020

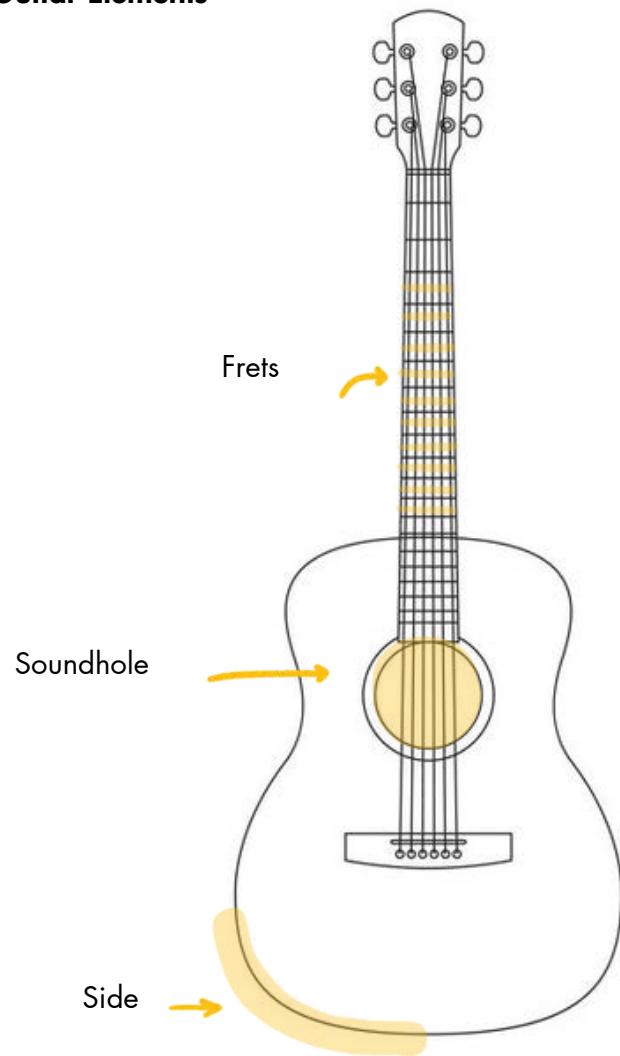
In the heart of Marietta, Georgia, the Curve Chateau is more than just a residence; it stands as a living testament to the vibrant art scene that defines this charming town. This home unfolds a narrative inspired by the shared passion of its occupants—guitar playing. Here, the elements of a guitar are deconstructed and seamlessly interwoven into the fabric of the living spaces. Each room resonates with a harmonious blend of aesthetics and functionality, paying homage to the musical talents that echo within its walls. The residence emphasizes privacy, open space, and natural lighting.



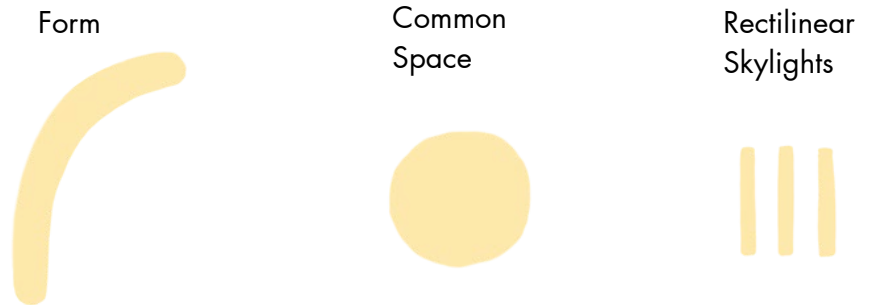


## CONCEPT DEVELOPMENT

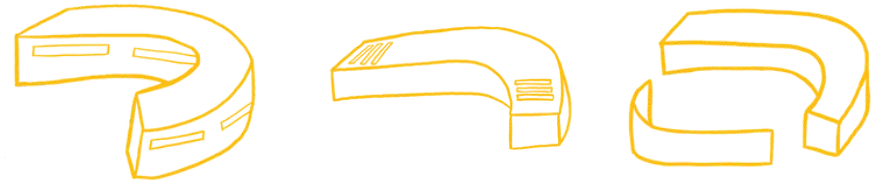
### Guitar Elements



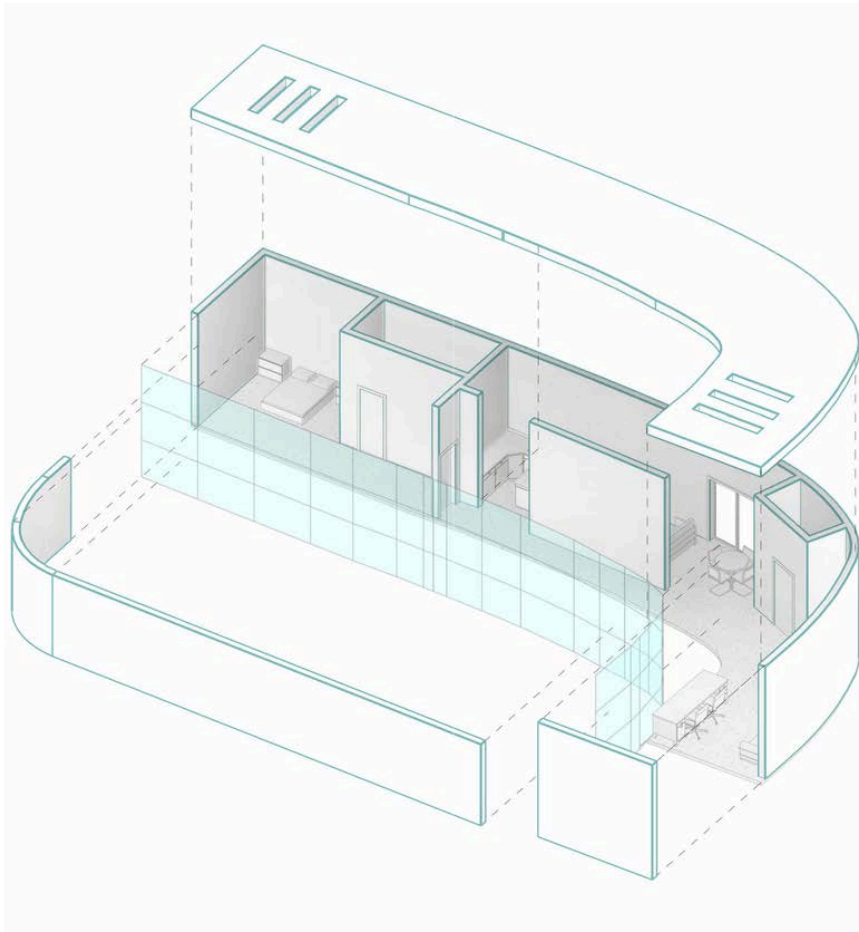
### Architectural Translation



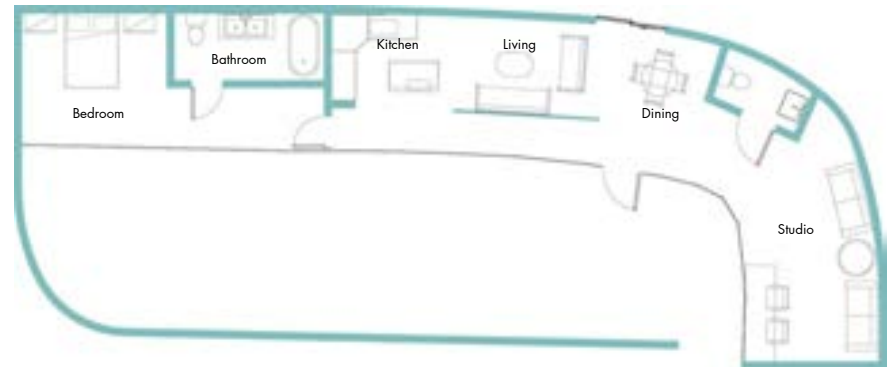
### Design Iterations



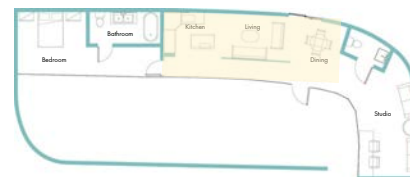
## AXONOMETRIC



## FLOOR PLAN



Public Space



Private Space



## RENDERS

### Exterior space



This space is kept private by a concrete wall creating an interior courtyard space.

### Bedroom | Private



This space is the couple's bedroom, featuring skylights inspired by the frets of a guitar, an essential element of the instrument.



### Living Room | Public



The living room is a public space for guests, reflecting the soundhole of a guitar, which produces the instrument's loudest sounds. This represents the living room as the house's open, lively area, filled with activity and noise.

### Music Studio | Public and Private



The music studio is a semi-public/private space in the house, designed for the couple to create and play music, continuing their passion for the guitar.

# PERSONAL WORK

Art has always held a special place in my heart, serving as a powerful avenue for **self-expression and exploration**. While my passion for artistic endeavors is most evident in my fascination with architecture, which I perceive as a captivating 3D art form, my love for creativity extends beyond that. I find immense joy in exploring other art forms, particularly painting and digital illustration. These mediums offer me a dynamic and diverse canvas to trans-late my thoughts and emotions into visual expressions.

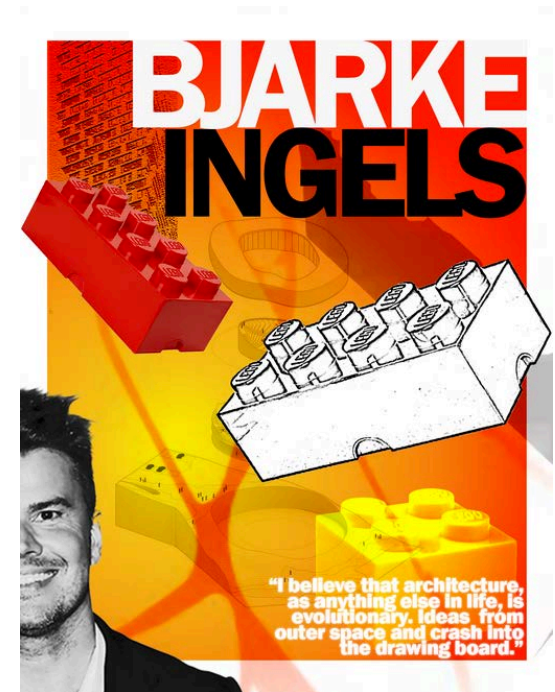
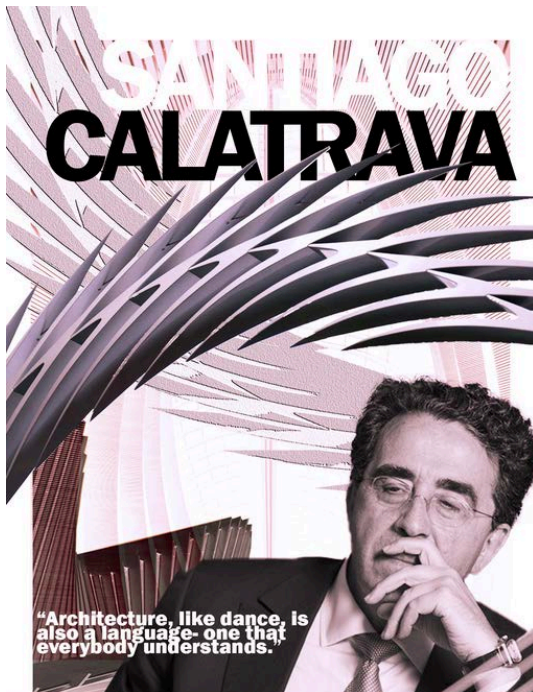
## CANVAS PAINTINGS

[Acrylic Paint]



## "ARCHIGRAM" | GRAPHIC COMPOSITION

[Adobe Illustrator, Adobe Photoshop]





## DIGITAL ILLUSTRATIONS

[Procreate]



**MAHARI  
KIT**

