



---

# RASHIDA MOMOH

Professional Portfolio

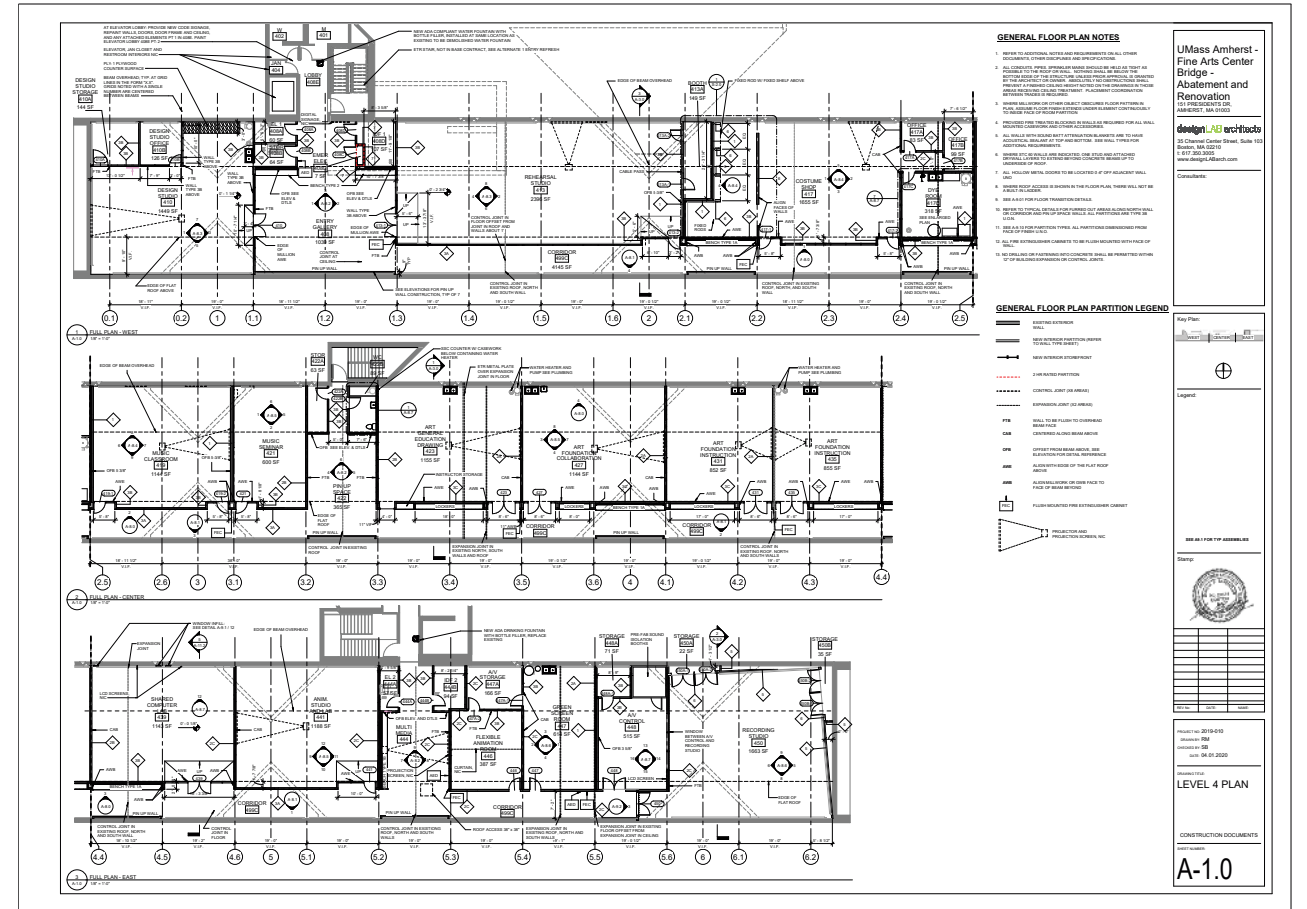
---

*Fine Arts Center Bridge*  
*The Webster Apartments*  
*The New Goodhue Center*  
*Strategic Process Improvement Documents*  
*Costello Columbia Lake Front*  
*Thamesmead Towers*  
*Sketches*

# FINE ARTS CENTER BRIDGE

designLAB Architects  
Completed 2021

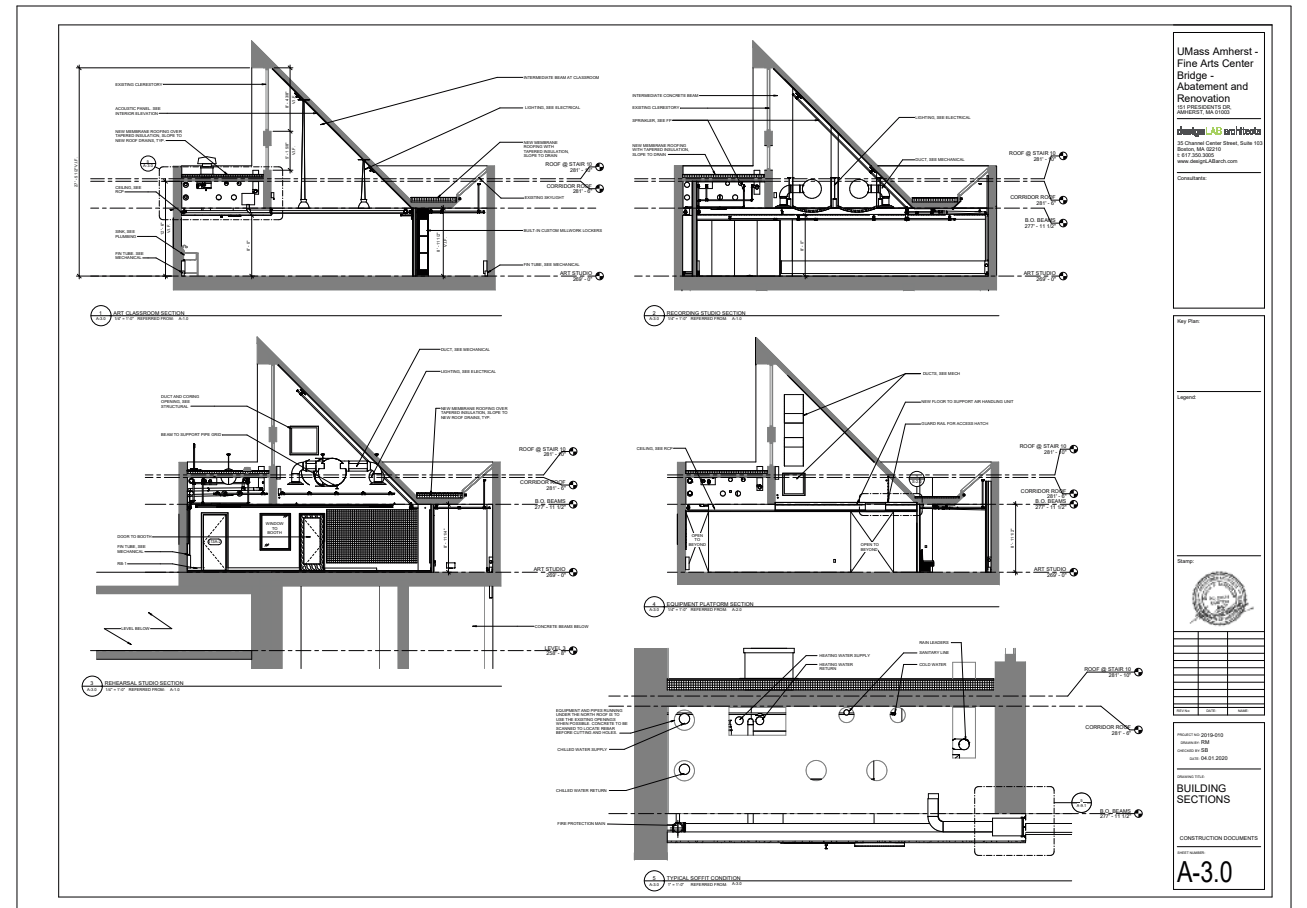
This project is a interior gut renovation of a 1970 brutalist building by Kevin Roche's building called "The Bridge". It is a 600 foot long concrete building elevated on 30' tall v-shaped columns. The project is roughly 25,000 sf and the project cost was about \$11m. I worked on this project from concept to completion which included client presentations, producing design drawings through all design phases, and performing construction administration tasks.



Construction Drawing - Floor Plan

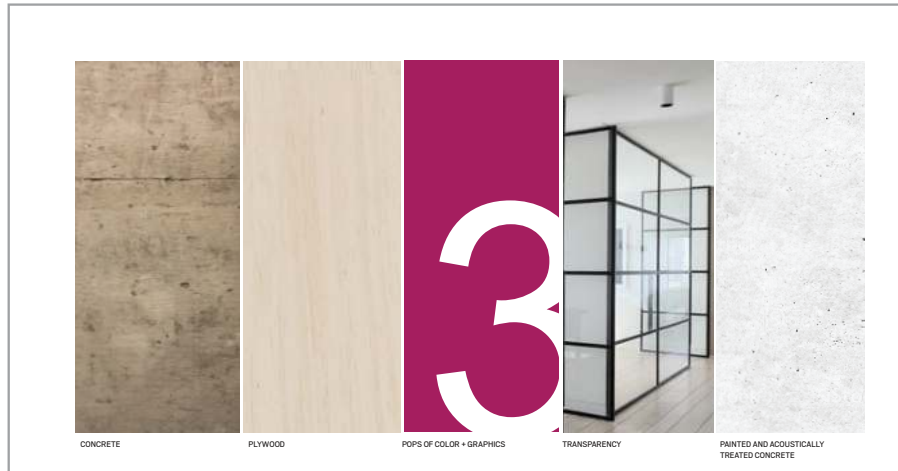


View of South Facade

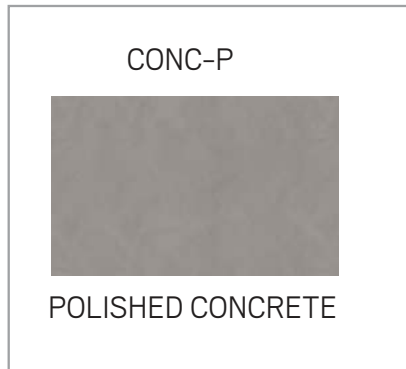


Construction Drawing - Section

PALETTE



FLOORS



LIGHTS



WALLS

MILLWORK



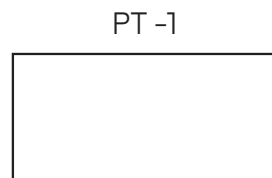
BALTIC BIRCH

BLACK STOREFRONT

GL-2 AND GL-3



DISPLAY WALLS



BRIGHT WHITE

FLUSH WOOD BASE

FWB-1



COLOR SCHEME 1

WARM

FABRICS

FAB-2



FAB-3



FAB-4



FAB-5



PAINTS

PT-2



PT-3



PT-4



PT-5



FABRICS

FAB-2



FAB-3



FAB-4



FAB-5



PAINTS

PT-2



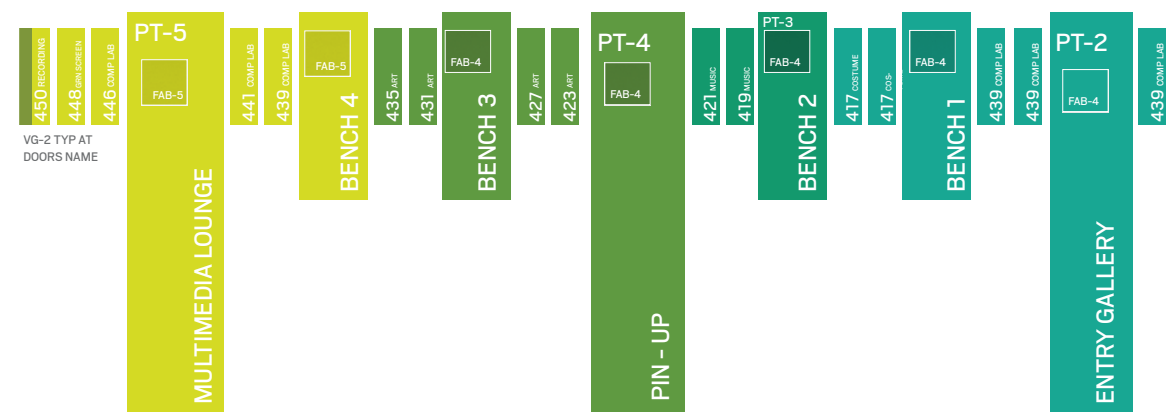
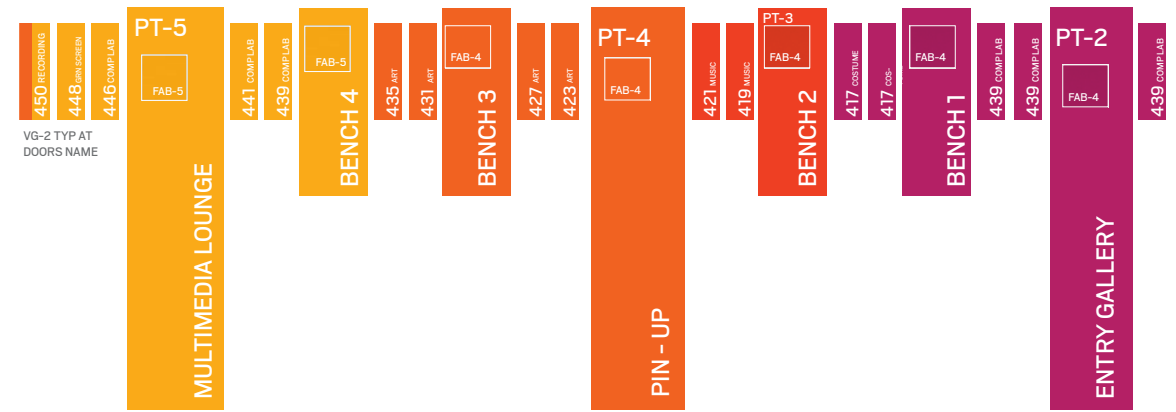
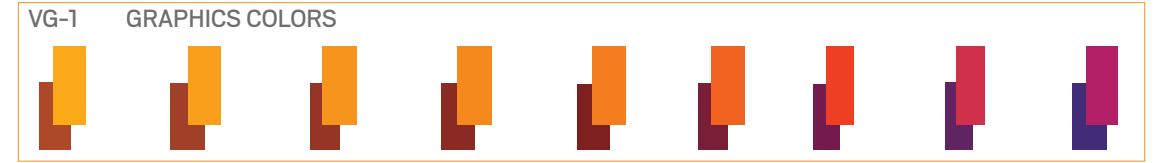
PT-3

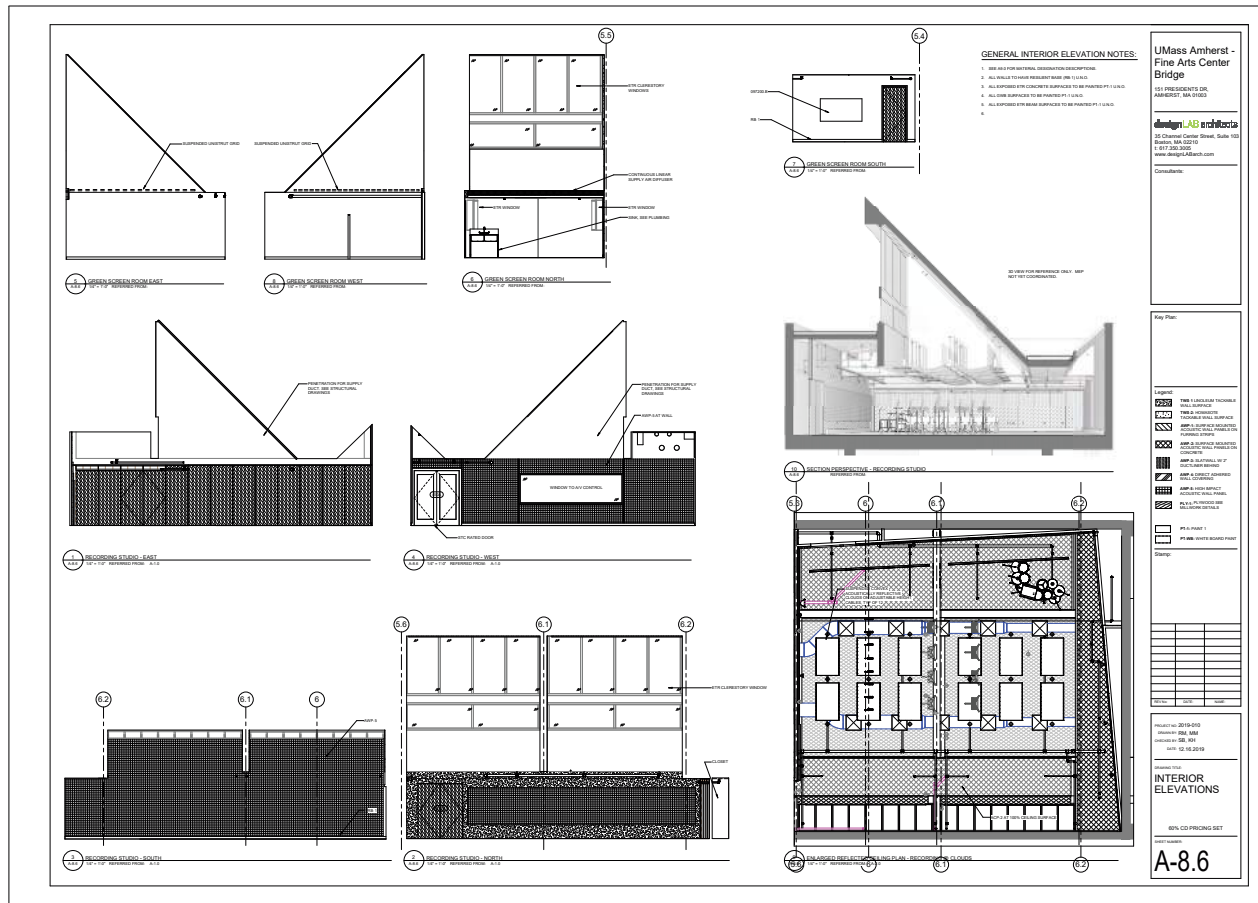


PT-4

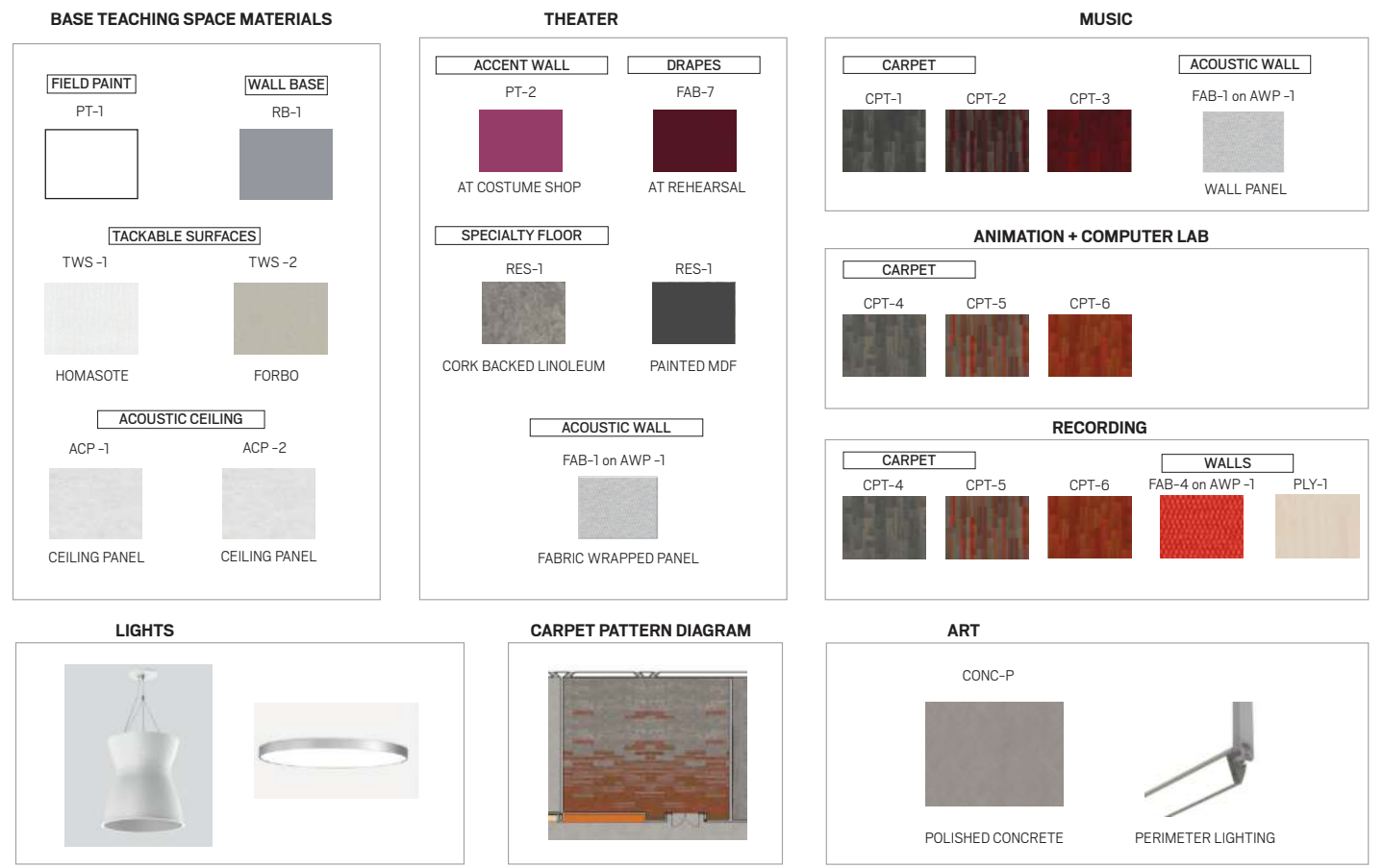


PT-5

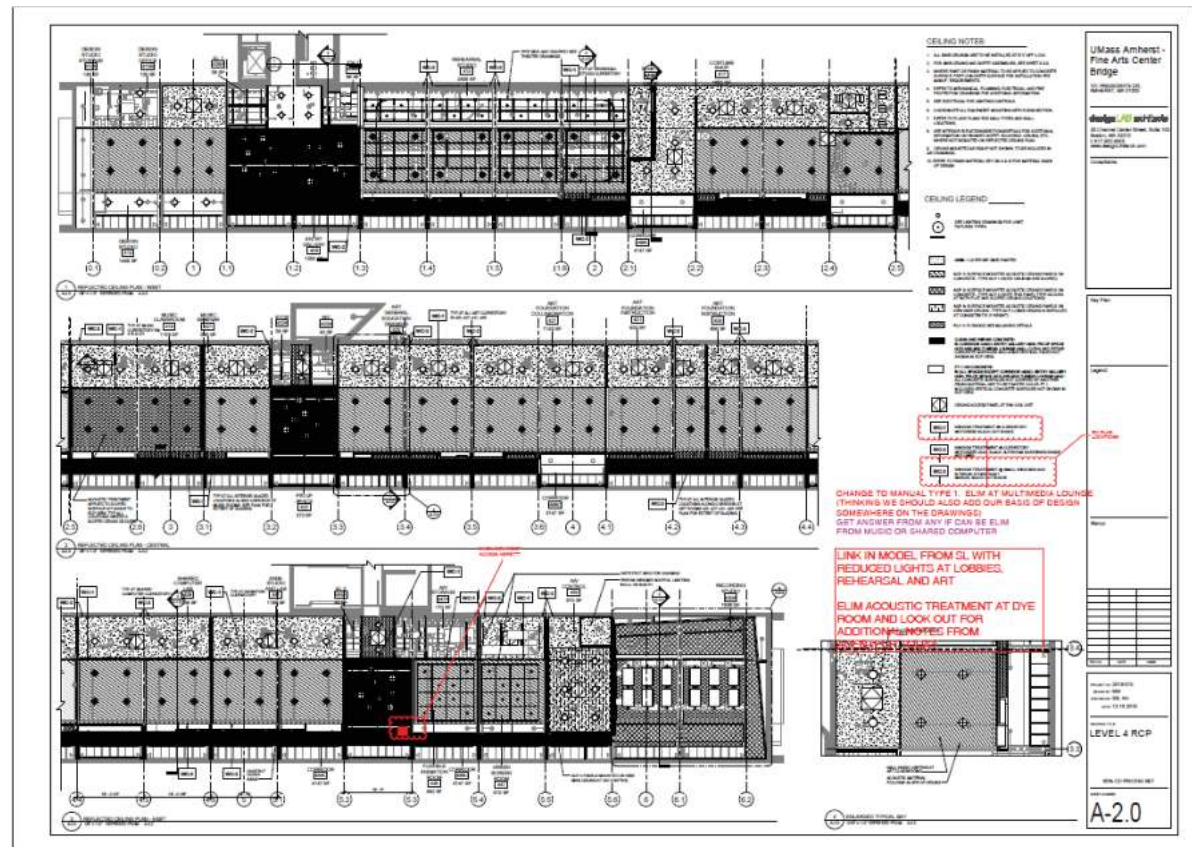




Construction Drawing - Interior elevation



Material Palette - Teaching Spaces



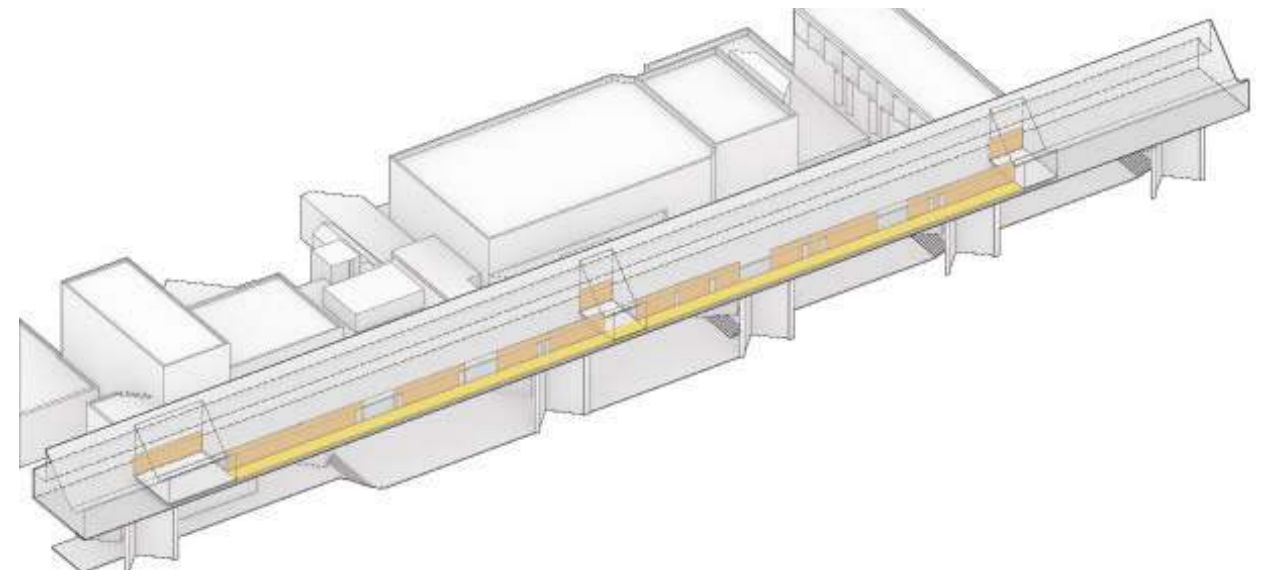
Construction Drawing - Reflected Ceiling Plan - red line



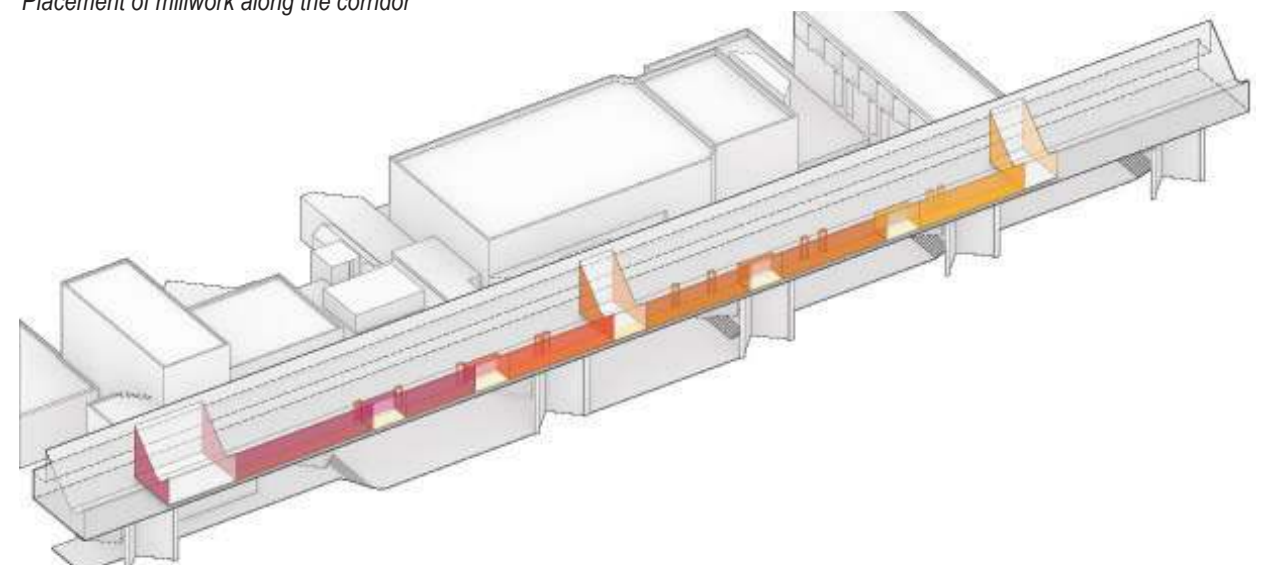
View of a typical classroom



Section Perspective - Corridor



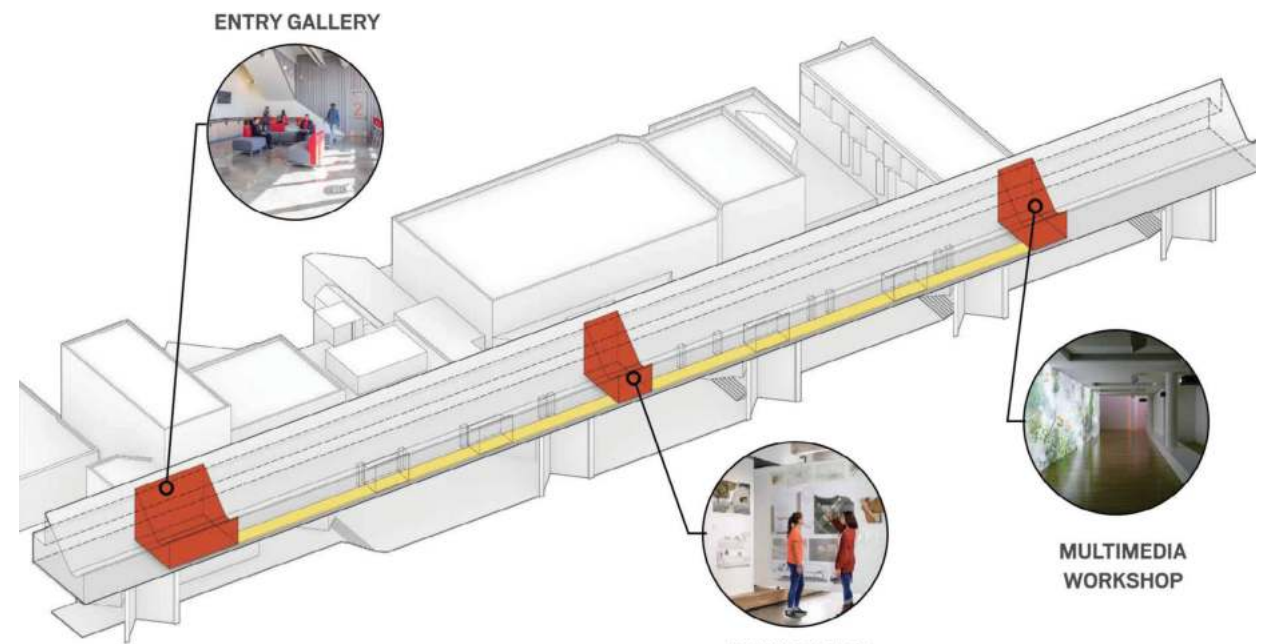
Placement of millwork along the corridor



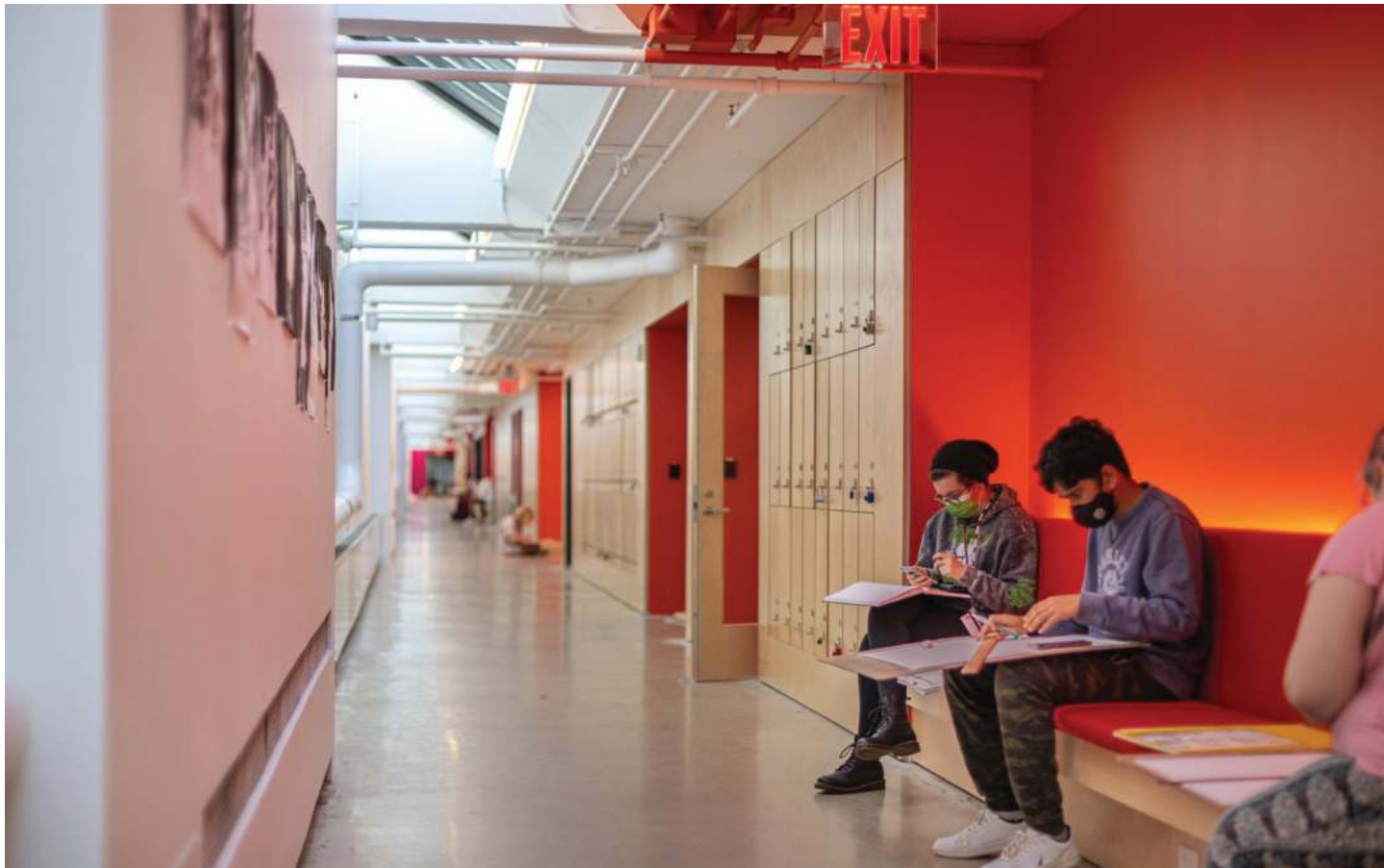
Color way-finding strategy



View of Entry Gallery



Addition of Lobbies



Finished Photo - Corridor at Pin-Up space



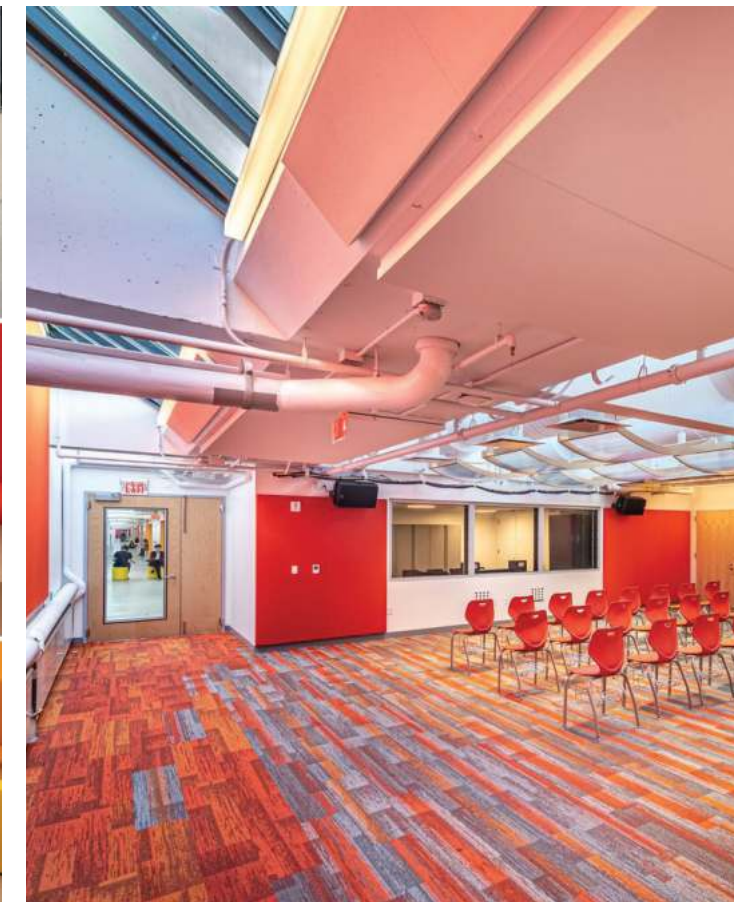
Finished Photo - Theater Costume Room



Finished Photo - Art Classroom  
10 | Fine Arts Center Bridge Project



Finished Photos - Millwork and Furniture details



Finished Photos - Recording Room  
Fine Arts Center Bridge Project | 11

# THE WEBSTER APARTMENTS

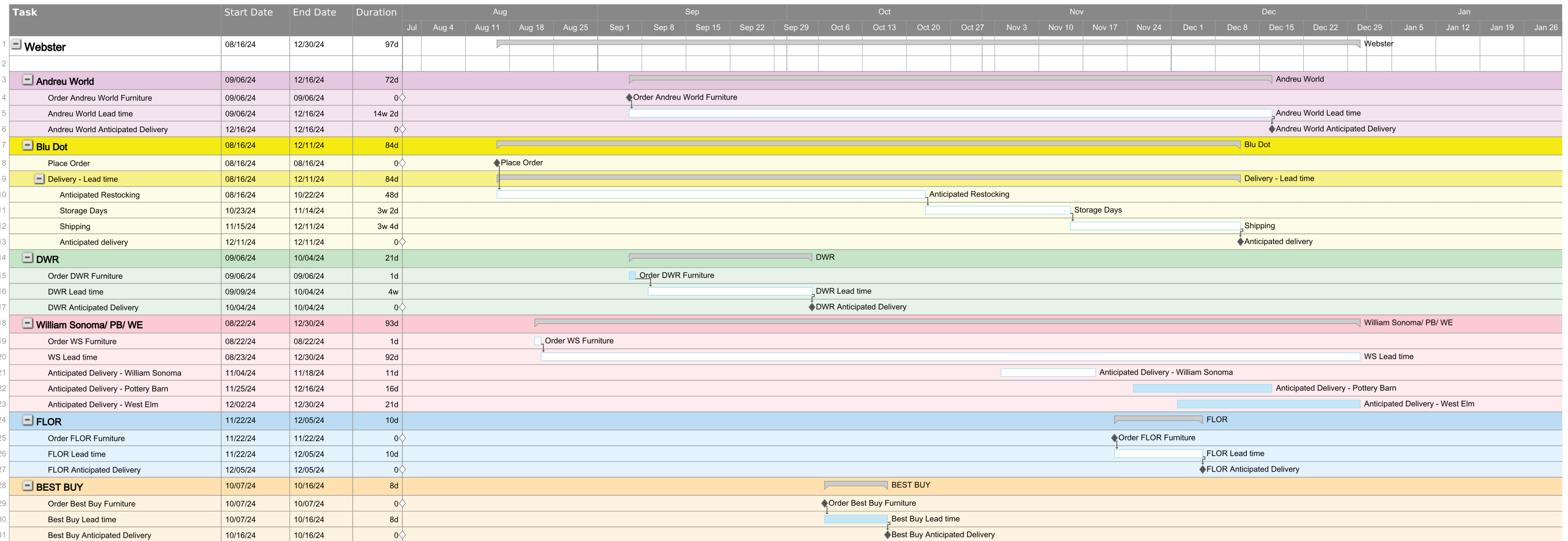
Zubatkin Owner's Representative, a Cumming Group Company  
Completed 2024

This project is a renovation of an apartment tower in downtown Brooklyn, NY to provide additional housing units for The Webster apartments, a non-profit organization that provides affordable housing for women early in their careers. On this project, I assisted in furniture procurement including client coordination, developing schedules, tracking cost, and coordination with furniture vendors.

Project Team  
Architect: FxCollaborative      Owner's Rep: Zubatkin      Contractor: JRM



Axonometric Diagram - Produced by FXCollaborative

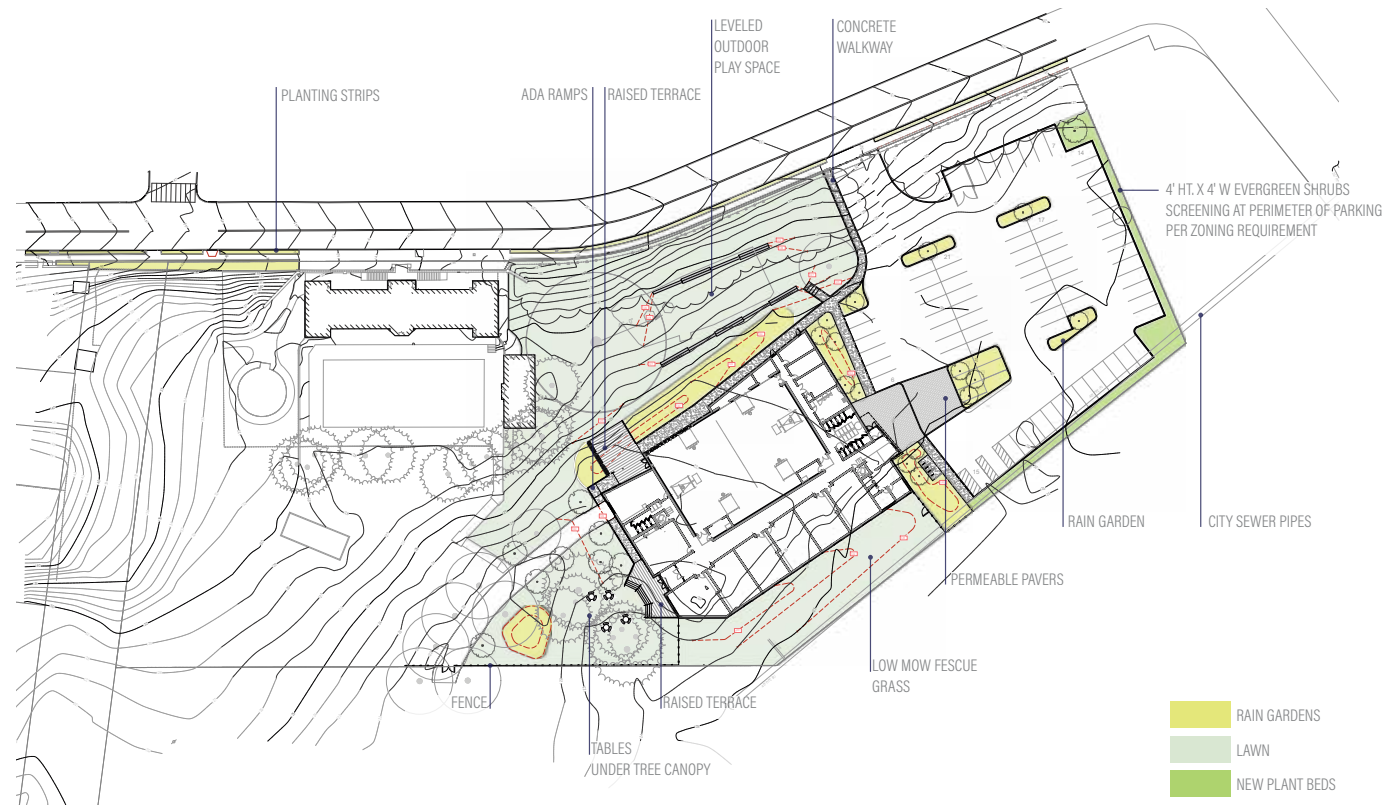


# THE NEW GOODHUE CENTER

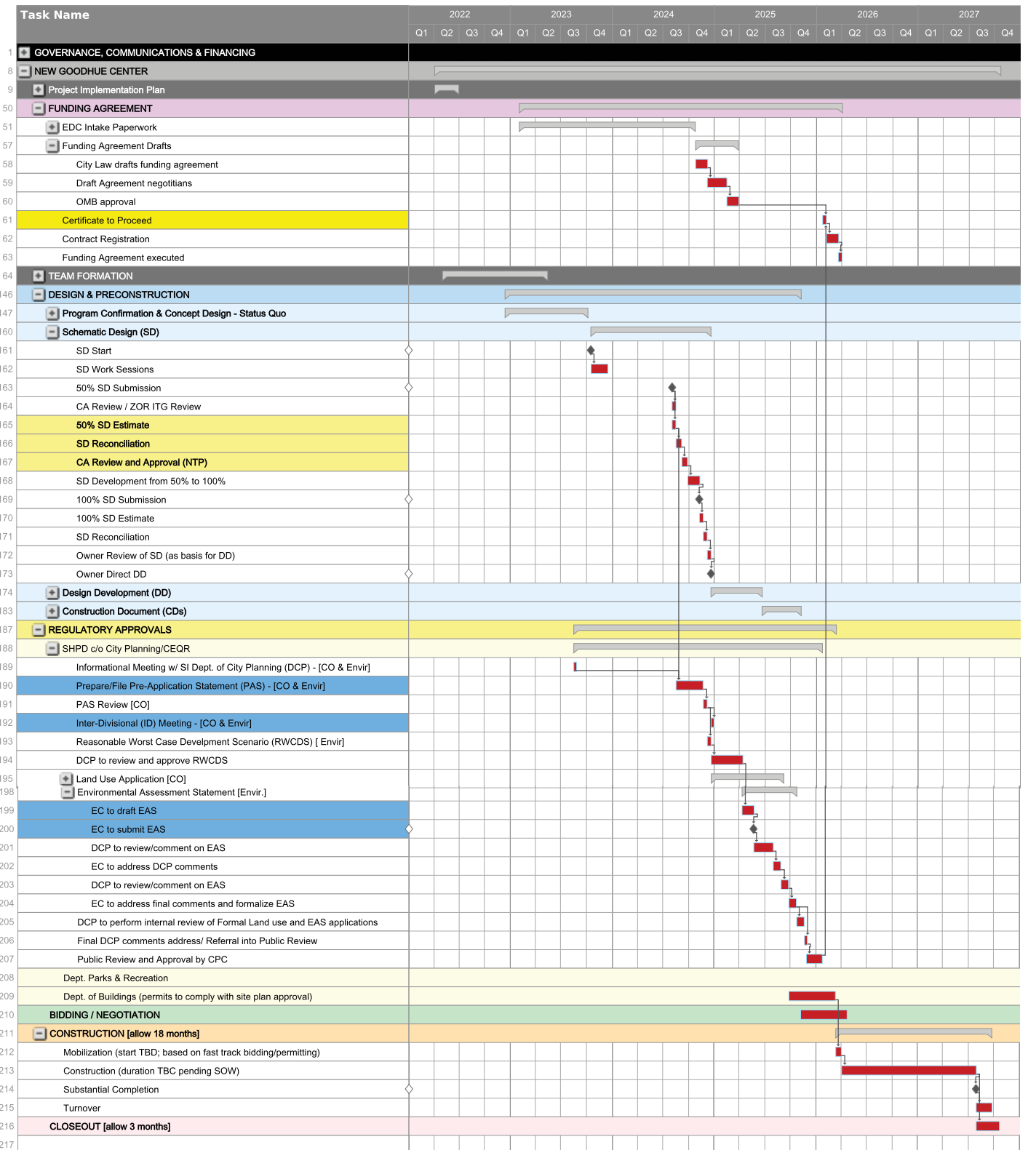
Zubatkin Owner's Representative, a Cumming Group Company  
Design Ongoing; Construction Anticipated 2026

A new 1 story building in Staten Island is being designed to support services provided by the Children's Aid Society to local school age children. I am currently assisting in project management which includes client coordination, tracking project costs, reviewing project scope, tracking required approvals processes, and developing RFPs.

Project Team  
Architect: BSKS Architects      Owner's Rep: Zubatkin      CM: Gilbane



GOODHUE | SITE PLAN | OCTOBER 30, 2024



# STRATEGIC PROCESS IMPROVEMENTS DOCUMENTS

Department of Design and Construction  
2023-2024

The images shown are pages from process improvements documents from two key priority initiatives the Strategic Initiatives Unit at the DDC focused on during my time there. One was on Advanced Capital Planning, which focused on assisting sponsor agencies with assessing their capital needs comprehensively. The other was a series of recommended process improvements between the DDC and the PDC (Public Design Commission), in an effort to create a more efficient design review process. My primary role on both of these initiatives was information gathering, leading coordination meetings, general project management, research, and writing.

## Working Together for Quality Public Design

### DDC | PDC Design Review Recommendations

December 2023

The NYC Public Design Commission (PDC) and the Department of Design and Construction (DDC) are committed to delivering high-quality public buildings and infrastructure to communities across New York City. Working together, we have identified opportunities to improve the City's design review process to streamline capital project delivery while building on our joint legacy of innovation and excellence in design.

These recommendations are the result of a year of in-depth engagement between the agencies. A dedicated working group comprised of DDC staff, PDC staff, PDC commissioners, and Deputy Mayor teams undertook an intensive series of workshops to better understand the process and experience of design review from multiple perspectives, to identify what is working well and where challenges lie, and to brainstorm ways to improve. Complementing this effort was the release of a comprehensive survey to NYC design professionals and DDC staff. The result is six overarching recommendations that our teams will work to implement in 2024 and beyond in partnership with the City's capital agencies.

#### 1. Establish a recurring process for evidence-based evaluation and change.

*We will regularly review and evaluate the project review process with our agency partners.*

##### The Issue:

The current design review process is complex. PDC reviews hundreds of project submissions every year on a strict monthly schedule to support effective design reviews. PDC has a regimented set of requirements for submitting City agencies. Currently there is no formalized process in which PDC and City agencies regularly review and revise these procedures. This can make it difficult to incorporate feedback, lessons learned, or changing conditions, such as the piloting of alternative project delivery methods.

##### Recommendations:

- PDC will establish a recurring, interagency exchange to discuss capital agencies' quantitative and qualitative data on how design review processes are working, allowing future opportunities to simplify or refine parts of the process where needed.
- PDC will consider the benefits of incorporating technology solutions into the design review process and explore how these may make certain tasks quicker and easier.

### Planning Better

DDC recognized even before its first *Blueprint* that early planning is key to delivering projects successfully, and that many projects were initiated without the funding, scope, legal authorizations, and other elements needed to complete the work. In 2017, the agency created its Front-End Planning (FEP) unit to assess every project for feasibility before starting work. In Fiscal Year 2023, DDC's FEP teams reviewed 106 projects, returning roughly half those projects to sponsors and collaborating with them to revise before initiating. While FEP has been effective in aligning project scopes and budgets, comprehensive capital planning must start earlier in the process.

### Assessing the City's Needs

**NEW STRATEGIES TO IMPROVE PLANNING FOR CAPITAL PROJECTS**

The agency took the first steps to launch its Advanced Capital Planning (ACP) program, which will work with sponsor agencies to assess their entire portfolio of public buildings and develop efficient, forward-looking strategies to manage their capital needs. **In 2023, DDC built and launched the first phase of a new ACP data portal to compile key information on NYC's public buildings within a single, easy-to-use interface.** In a future phase, information from DDC's site assessments will be input directly into the portal via a mobile site-survey tool. Last year, DDC also developed a prototype version of the tool in response to the City's effort to rapidly house asylum seekers. The agency kicked off an ACP pilot program with the Queens and Brooklyn public library systems and will expand the ACP program to additional sponsor agencies. **DDC also partnered with the Mayor's Office of Operations to analyze best practices in asset information management and capital planning, efforts that will inform future phases of Advanced Capital Planning.**

**SPOTLIGHT**

### Rapid Emergency Response

The City often turns to DDC to respond rapidly to emergencies. In 2023, under emergency declaration, DDC deployed CM-Build on four emergency project portfolios, including \$200 million of urgently needed upgrades at Rikers Island, 15 aging buildings removed from Hart Island, and temporary shelter for asylum seekers—all while achieving record M/WBE participation rates and rapid delivery.

To rapidly house asylum seekers, a 15-person "DMAB" team of architects, engineers, and project managers responded. By the end of 2023, they had assessed 45 potential Humanitarian Emergency Response and Relief Center (HERRC) sites, assessing each for capacity, fire safety and code compliance, fire safety, as well as other factors required to safely house asylum seekers.

The team oversaw construction of City-owned sites and provided oversight and guidance for the buildout of leased sites to meet aggressive construction schedules. In October 2023, the DDC HERRC team members were honored with the Mayor's 2023 Excellence in Customer Service Award.

To better track the data gathered in its detailed site assessments—including for use in a future emergency—DDC quickly built a prototype site survey tool to enter information on site and store it in a central database. These tools will serve as the model for a permanent site assessment tool integrated with the agency's new ACP data portal, allowing DDC and other City agencies to rapidly assess public buildings for use in an emergency.

Using On-Build, DDC completed an emergency reconstruction of critical sewer infrastructure in the Pugsley Creek area of the Bronx, upgrading a regulating chamber and diversion chamber over 90 years old and resilient to sea level rise. Over 1/3 of the Bronx's combined sewer and sanitary sewer flow.

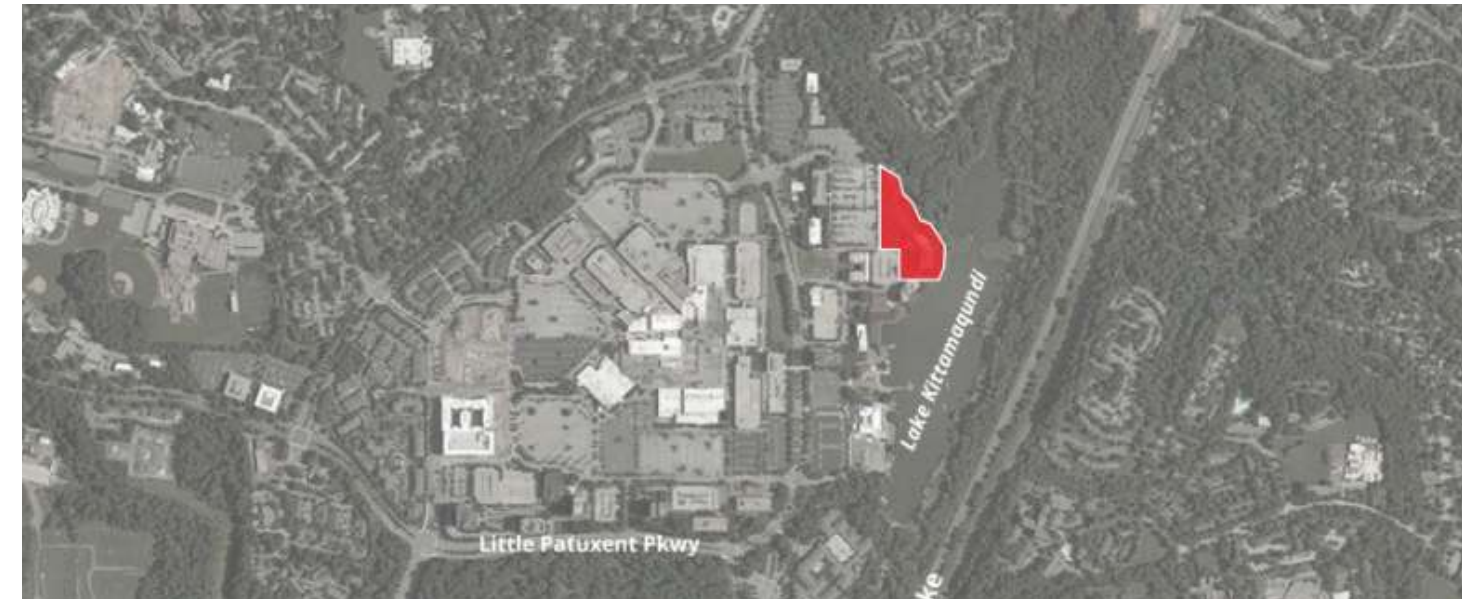
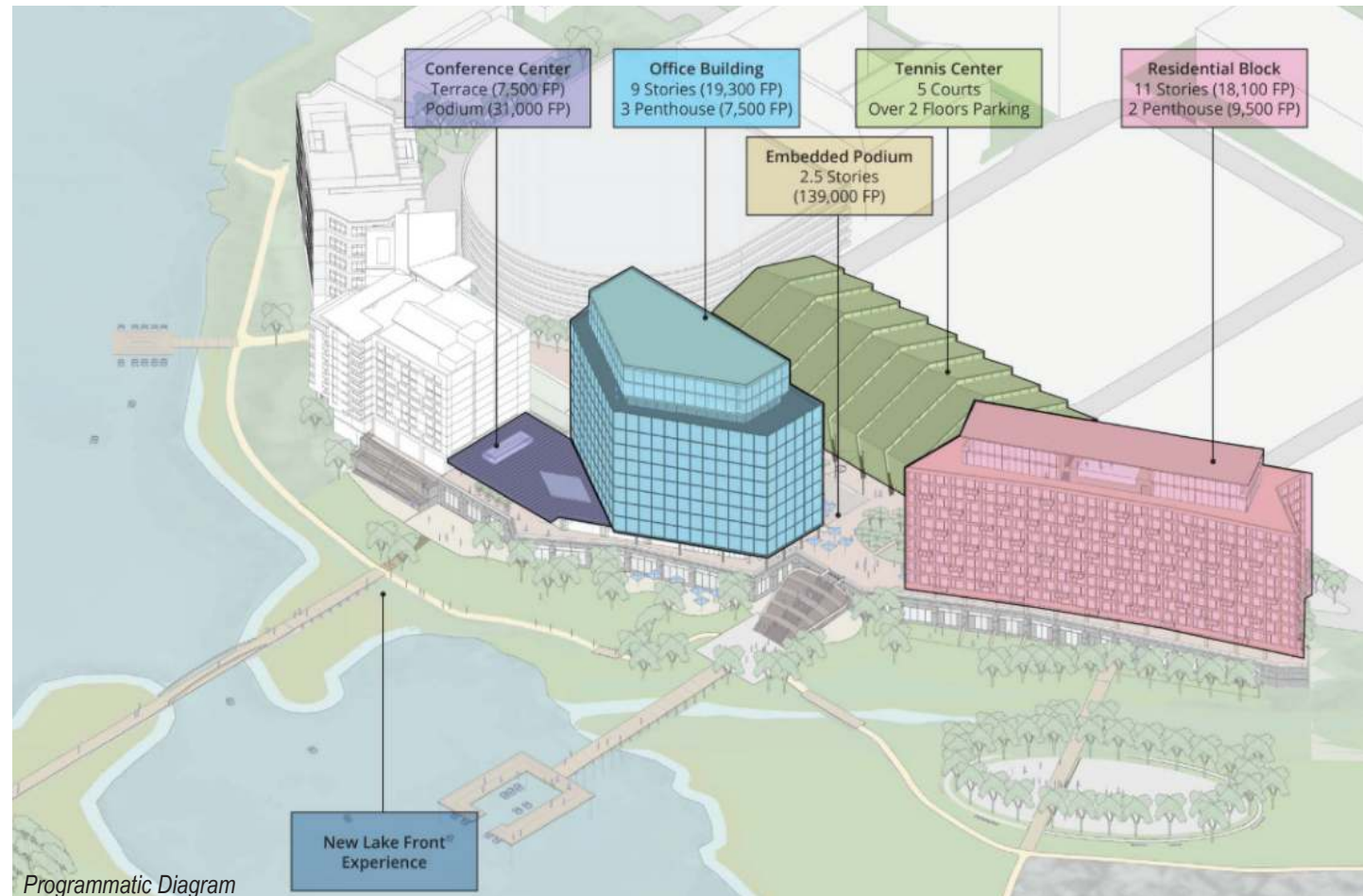
DDC STRATEGIC BLUEPRINT PROGRESS UPDATE

Strategic Blueprint

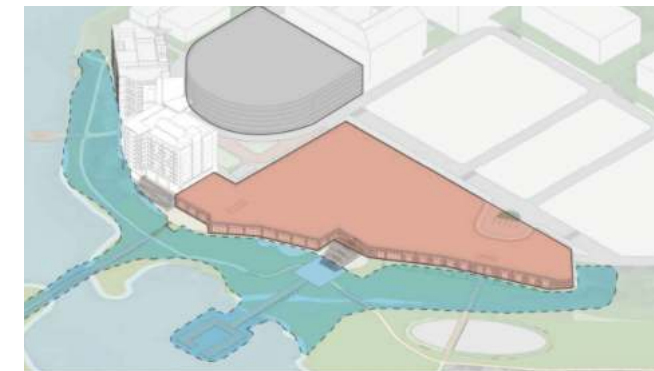
# COSTELLO COLUMBIA LAKE FRONT

Machado Silvetti  
2019

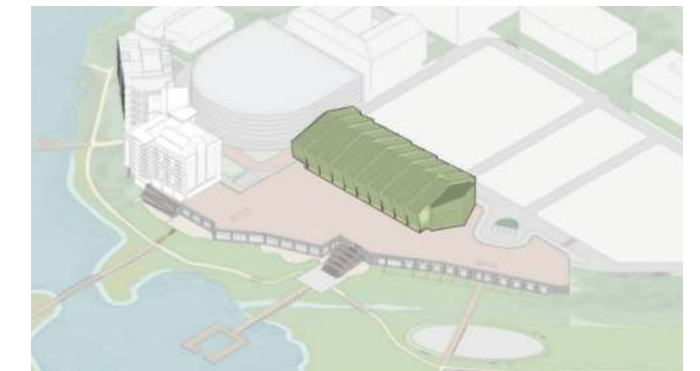
The location of this project is Columbia, Maryland. The program consists of a 170,000 sq ft office building, a 200,000 sq ft residential building, and a 6,000 sq ft tennis center along part of the north western edge of Lake Kittomaquundi. The primary design driver was ensuring the office building and the residents were given a strong connection to the lake through views, plazas, and green space. This project continued through schematic design and I assisted in preparing the massing diagrams, site plans and the renderings.



Site Plan



1. Enhance the quality of the Lake Front by activating edges with new active and passive programming.



2. A five-court tennis center provides wellness activities for all of Columbia. Expressive sports architecture gives iconic value to this large building.



3. A new signature office building for Downtown Columbia is sited with commanding views of the entire Lake Front.



4. A 200 unit Residential Building is located with great views of the Lake and Downtown Columbia.



Site Plan



View from Across the Lake



View from Lake Front



View from Plaza looking North

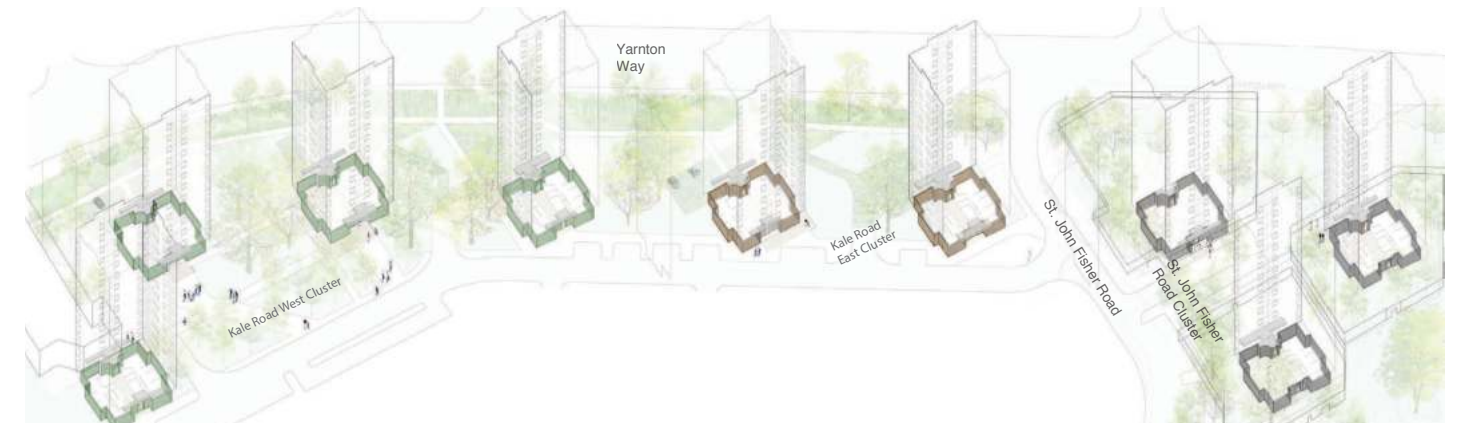


View from Plaza looking East

# THAMESMEAD TOWERS

5th Studio  
Co-op Work Experience | 2016-2017

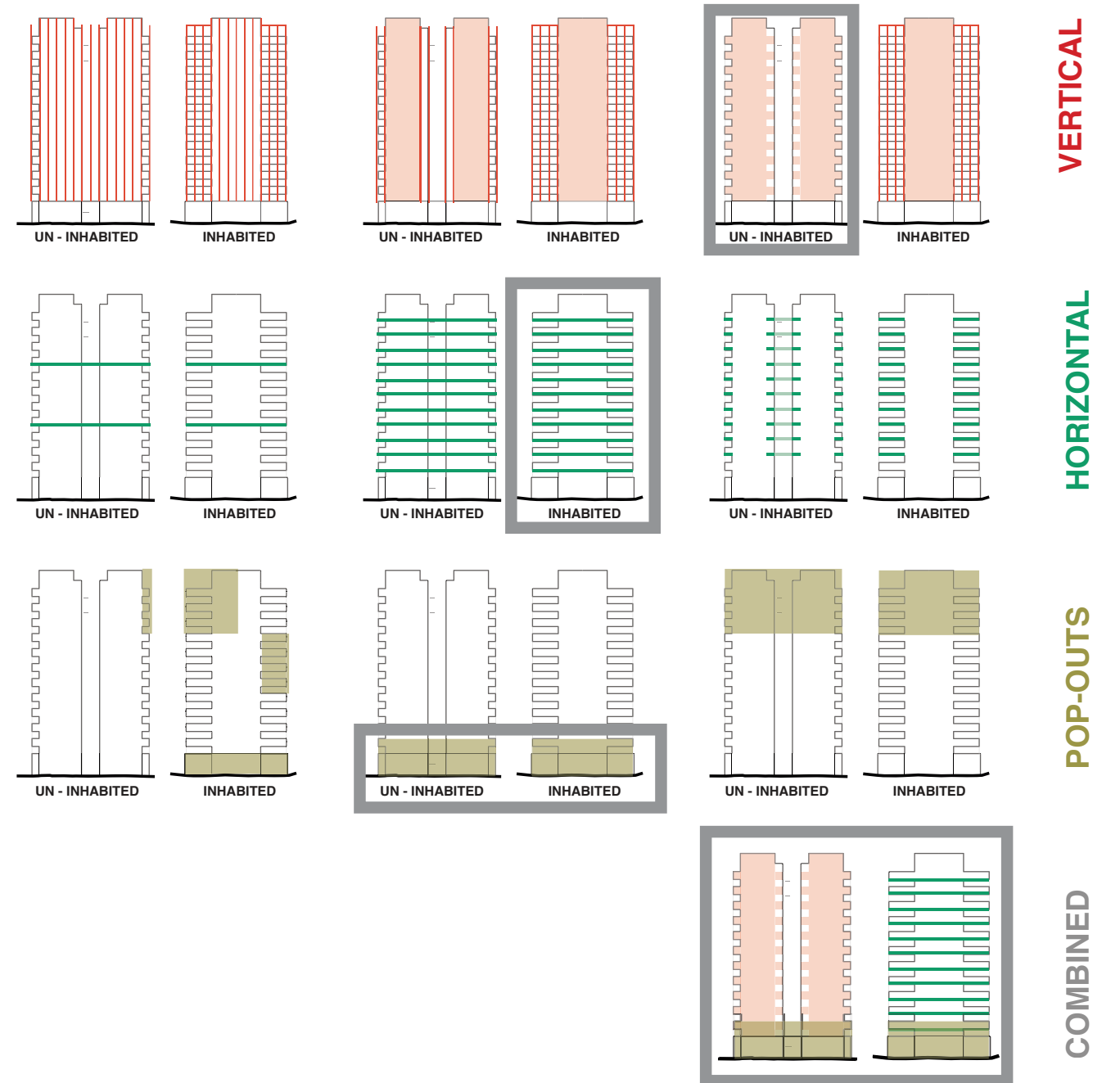
This London-based master planning project aimed to unite 9 towers through exterior cladding and landscape interventions. The diagrams on this page and the following page illustrate different options that were considered for the panelization and articulation of the inhabited and uninhabited facades - vertical, horizontal and pop-outs - and highlights the overall strategy.



Axon of the master plan



View of Kale Road West Cluster  
22 | Thamesmead Towers



Facade Studies



*View of Tower Cluster*



*View from St. John's Fisher Road*

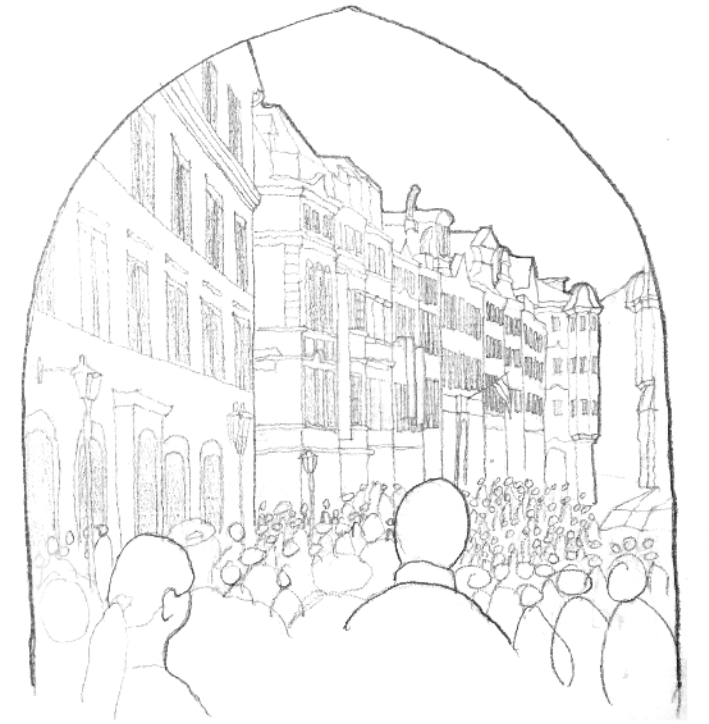
# DRAWINGS AND SKETCHES

2012-2017

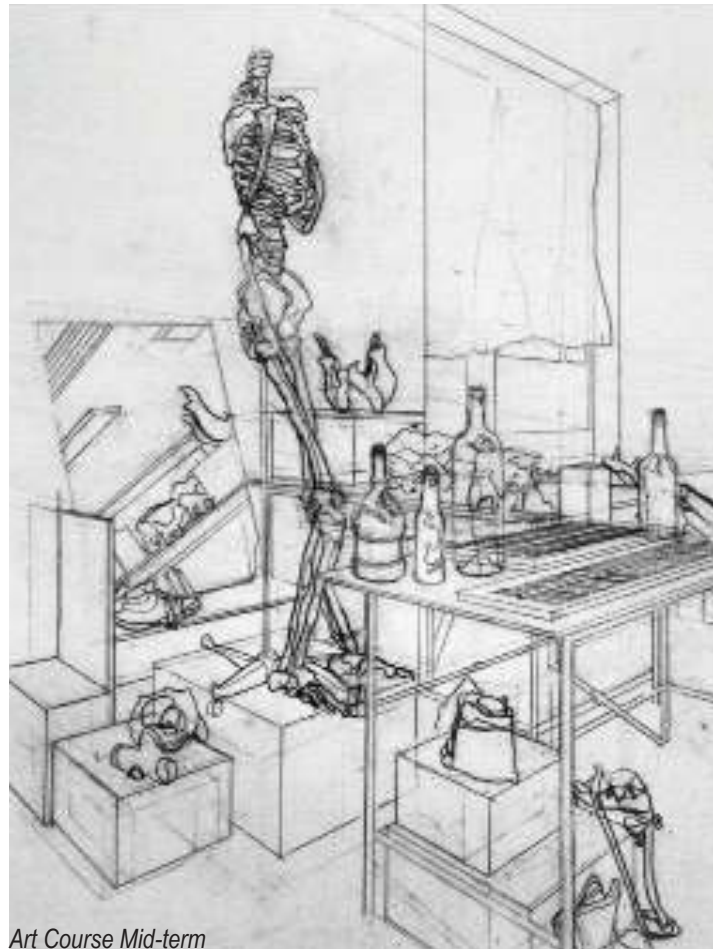
All my life I have had a passion for drawing, which has come in handy throughout my studies of the built environment. I have been able to understand abstraction and form on a deeper level through developing this craft. The drawing on the bottom left of this page is a semi-blind contour and perspective piece produced for my Drawing 1 class. On the following page I mimicked Alberto Giacometti technique in a recreation of one of his drawings. The remaining sketches are from my time abroad.



Alberto Giacometti recreation drawing



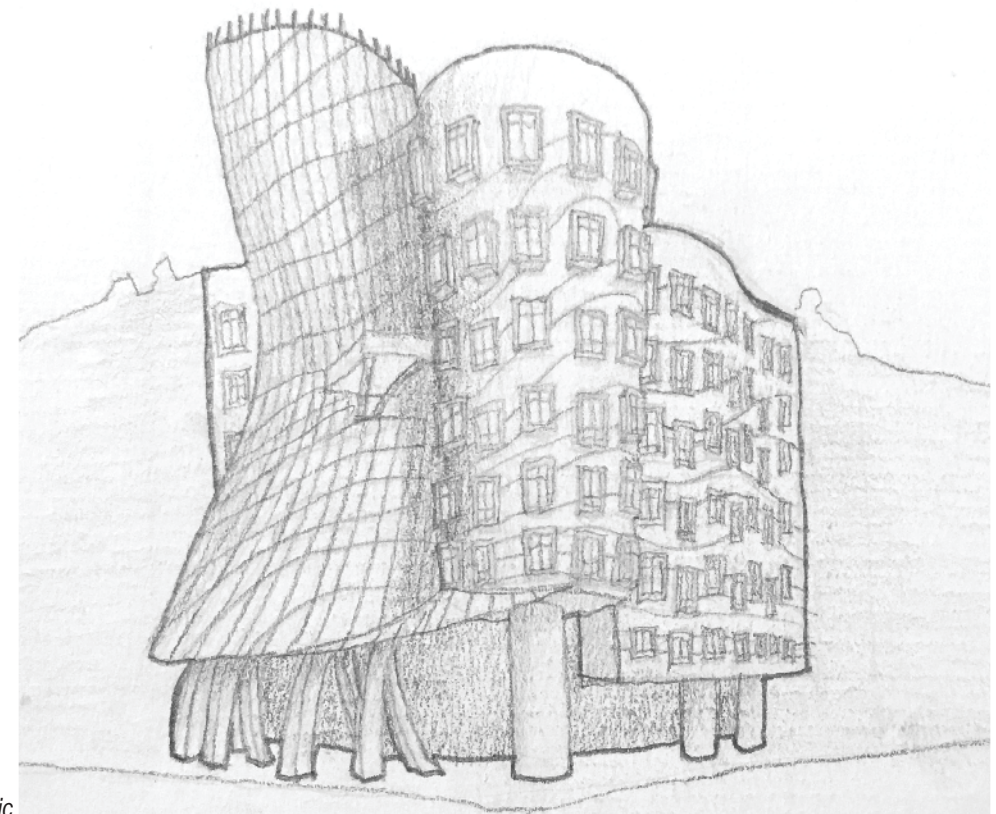
Prague, Czech Republic



Art Course Mid-term  
26 | Drawings and Sketches



London, England



Prague, Czech Republic



---

**RASHIDA MOMOH**

Professional Portfolio

---