



# ROBERTO ANDONIE

## PORTFOLIO 2025

---

### Contact

Design & Architecture:  
Roberto Andonie

Phone:  
(862) 344-2445

Email:  
[roberto.andonie@gmail.com](mailto:roberto.andonie@gmail.com)

Website & Online Portfolio:  
[www.robertoandonie.com](http://www.robertoandonie.com)

## **Commercial**

Retail, Offices, Restaurants



## Starbucks Reserve Artz Pedregal

Mexican artistry brews with worldclass coffee  
culture.

Starbucks Reserve Artz Pedregal was a project where I focused on merging Starbucks' iconic global identity with the unique aesthetic and artisanal spirit of Mexico City. Through my work in design development and construction supervision, I aimed to create a space that serves not just as a coffee destination but also as a place where local traditions and world-class design come together.

We designed the interior to balance Starbucks' signature style with local cultural motifs. Using wood, metal, and concrete, we created a contemporary space that honors the sophistication of the Reserve brand while celebrating the rich artistic heritage of the region. Thoughtful lighting was essential in crafting a warm, inviting atmosphere that highlights textural contrasts and complements the store's modern lines. During the construction phase, I paid close attention to every detail to ensure our design vision was realized exactly as intended. Each material and finish was carefully selected to meet high standards of functionality and aesthetic integrity. This Starbucks Reserve is more than just a place to enjoy exceptional coffee—it's an immersive experience that reflects a sense of place, inviting guests to engage with Starbucks' premium offerings in a setting that respects and celebrates the local context.

**Contributions:** Schematic Design, Design Development, Construction Documentation, Construction Inspection, Facade Design, Adapative Reuse, RFI Management, ADA Compliance.





## Starbucks Reserve Punto Valle

Sensory Coffee Tapestry

Designing Starbucks Reserve Punta Valle in San Pedro Garza García allowed me to merge luxury with the authentic charm of coffee culture. We set out to create more than just a café—it became a destination where the craft of coffee is celebrated in an elegant, contemporary setting.

The interior features dark, lustrous textures complemented by warm wooden accents. We used strategic lighting to highlight both the architectural elements and the rare, globally sourced coffee beans central to the Starbucks Reserve brand. The layout blends comfort and style, accommodating both intimate gatherings and those seeking a quiet moment alone.

Every detail was thoughtfully considered to encourage interaction with the baristas, inviting guests on a journey into the world of specialty coffee. The furniture and custom fittings were carefully chosen to reflect a sense of exclusivity and craftsmanship, aligning with the Reserve's ethos.

In developing the design, I focused on capturing Starbucks' rich tradition while introducing a fresh narrative that points to the future of coffee retail. From the moment you enter and are greeted by the aroma of coffee, to the interactive barista stations showcasing coffee artistry, the space is designed to flow naturally and engage the senses.

We aimed to harmonize the design with the cultural fabric of San Pedro Garza García, adding an international flair that elevates the local coffee experience.

**Contributions:** Schematic Design, Design Development, Construction Documentation, Construction Inspection, Facade Design





## Blend Station II

Crafting Connections

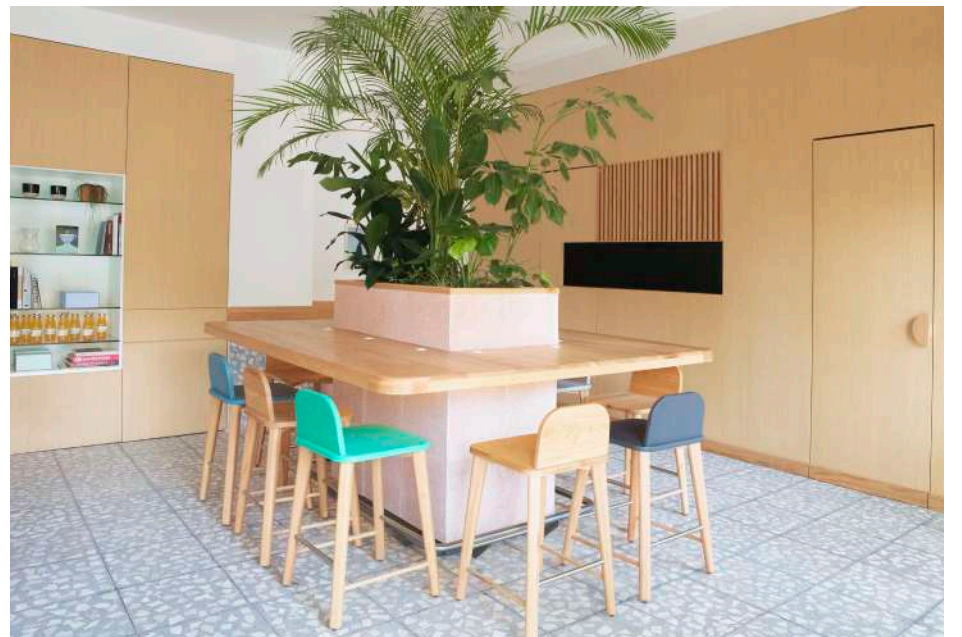
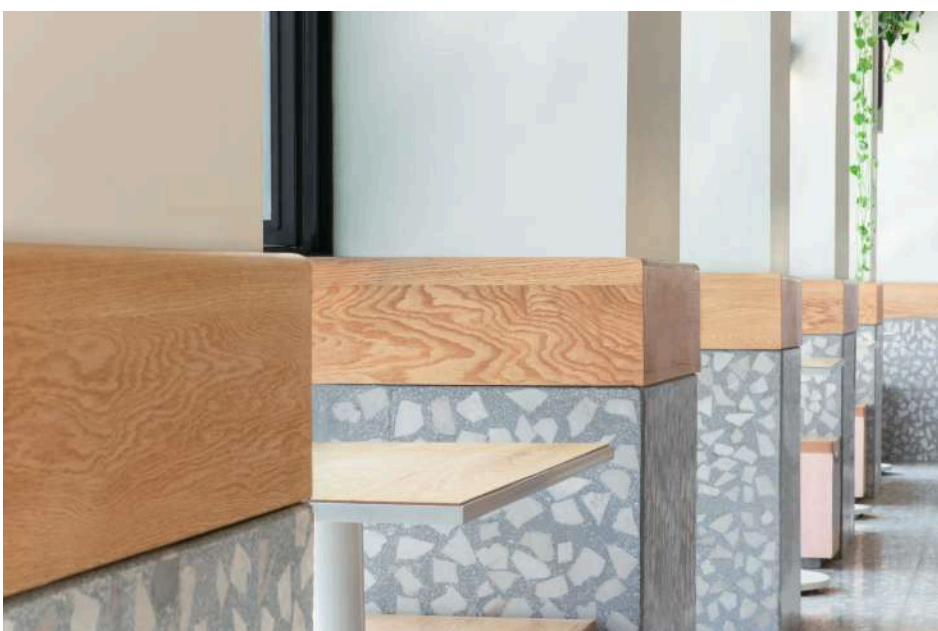
Designing Blend Station 2 in Roma Norte was a truly rewarding experience. I wanted to create a space that captures the lively essence of the neighborhood, a place where people feel comfortable gathering, chatting, and savoring artisanal coffee in a setting that reflects their community.

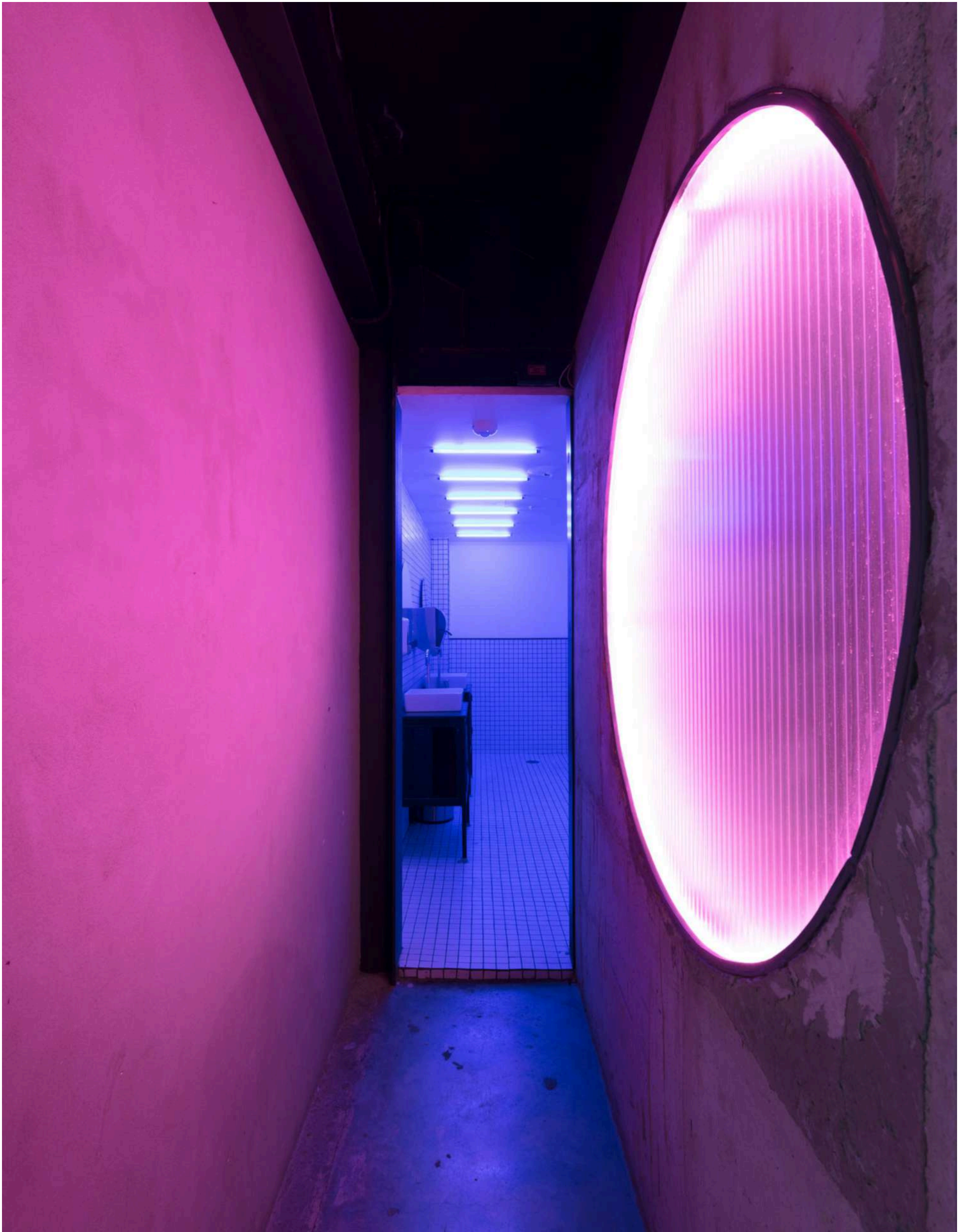
From the initial concept to overseeing construction, I focused on infusing the cafe with the area's communal energy. One of the aspects I'm particularly proud of is the custom terrazzo flooring. Collaborating with local artisans, we crafted unique color blends and patterns that add a contemporary touch while honoring traditional craftsmanship.

The furniture was carefully designed to balance form and function. Warm wooden chairs and bar stools with vibrant accents weren't just chosen for their looks; they play a key role in making the space inviting and personable. Each piece contributes to an atmosphere that encourages patrons to relax and connect.

Every detail in Blend Station 2 was thoughtfully considered to create an environment where design and social interaction go hand in hand. It's more than just a cafe—it's a welcoming retreat where the hustle of the city fades, and people can enjoy good coffee and great company. This project allowed me to blend my passion for design with a deep appreciation for the local culture, resulting in a space that feels both familiar and fresh.

**Contributions:** Conceptual Design, Schematic Design, Design Development, Construction Documentation, Construction Inspection, Furniture Design.





## Black Taiga

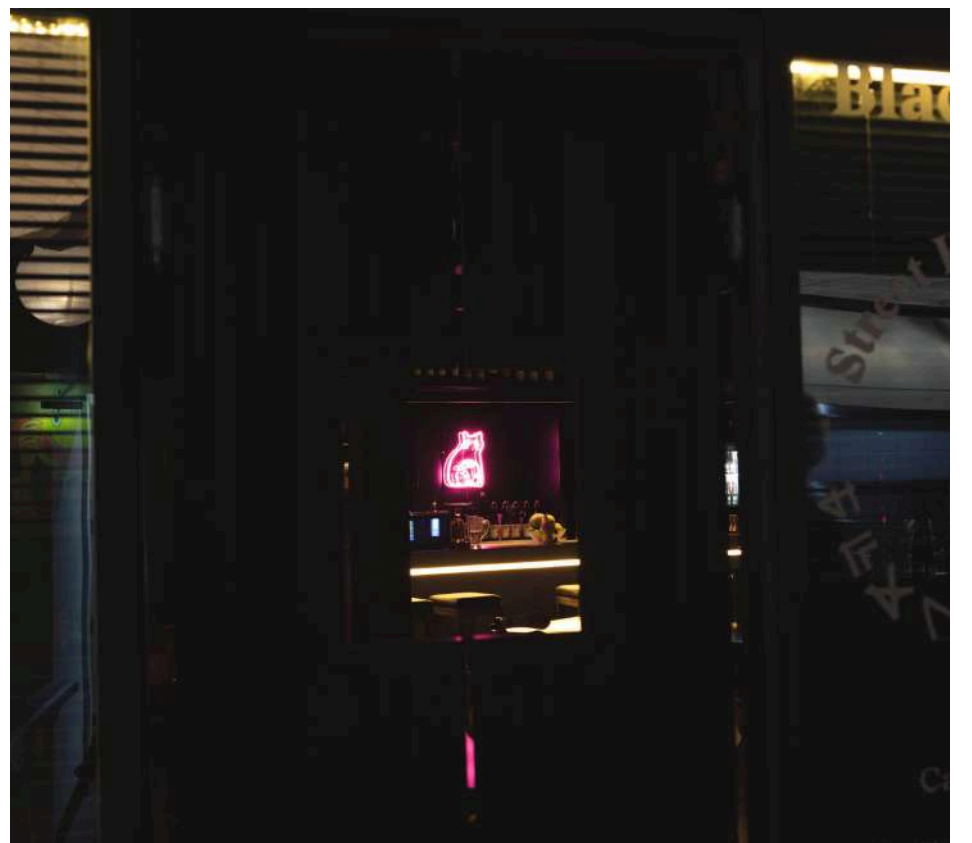
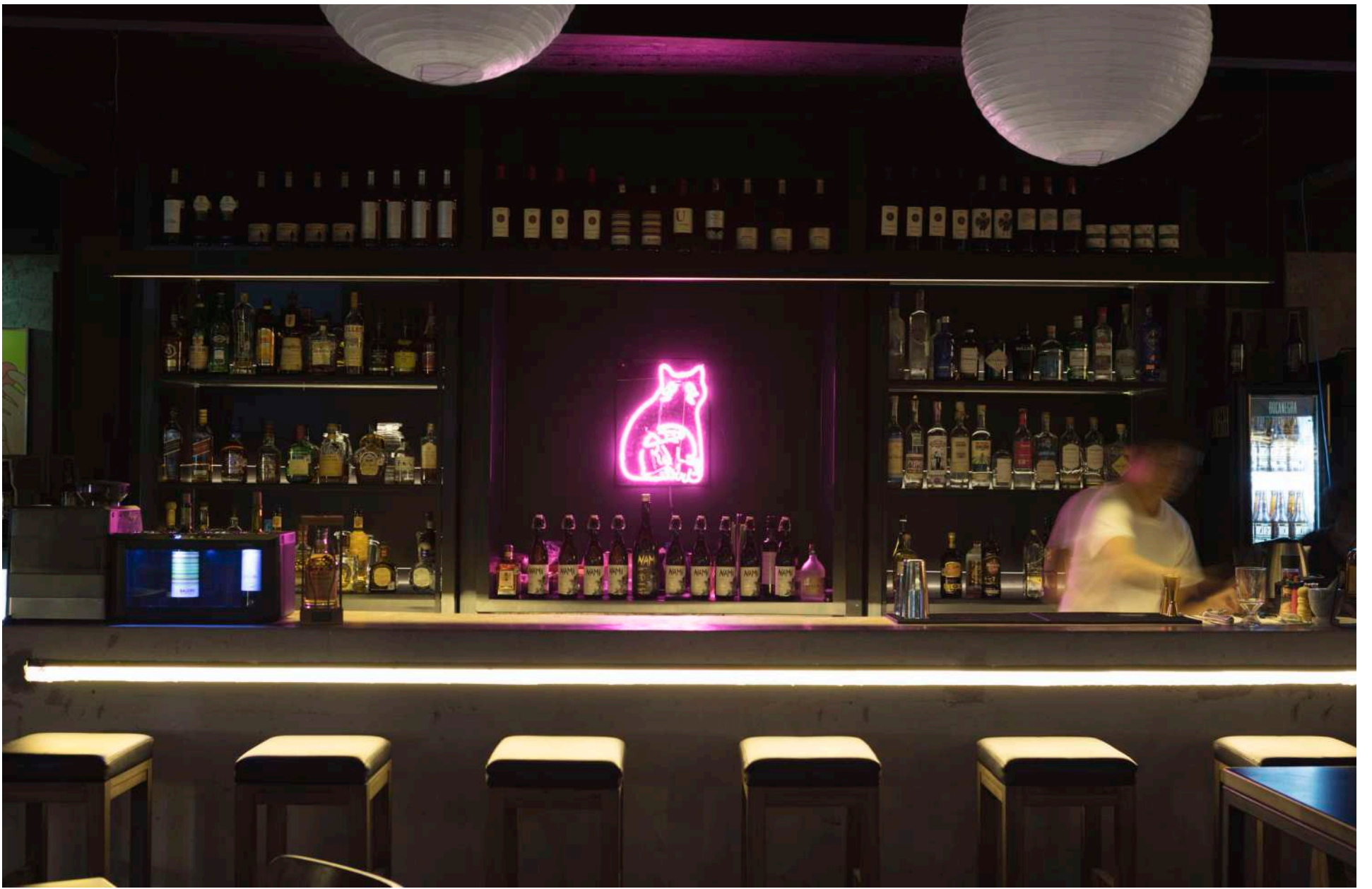
Shadows and Flavors

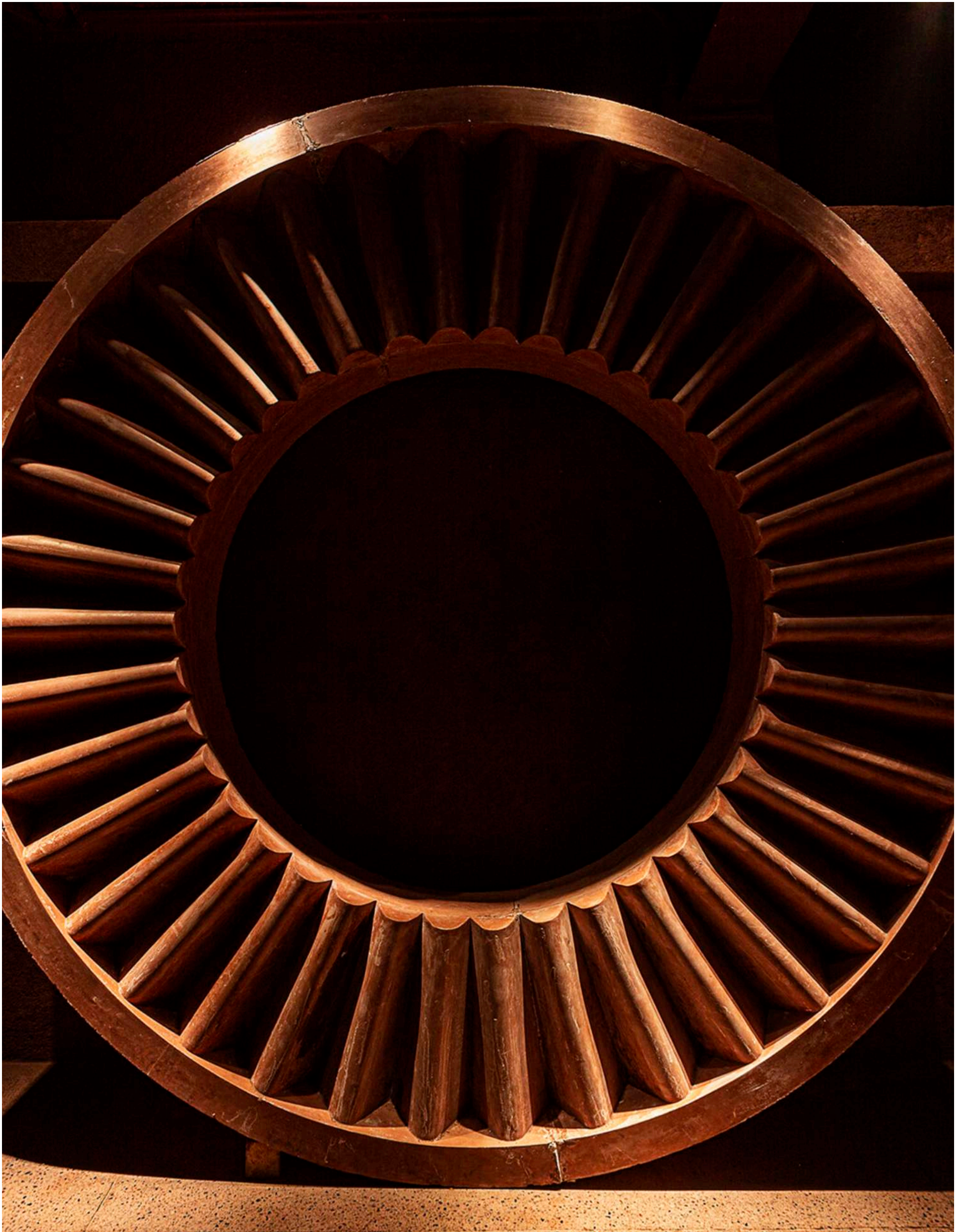
Black Taiga is a project I'm especially proud of—a nuanced addition to Mexico City's dynamic culinary scene, presenting an izakaya with a distinct Mexican soul. I was involved mainly from conceptual design through design development, driven by the ambition to fuse the friendly spirit of a Japanese gastropub with the boldness of Mexican design ethos.

We used strategic lighting to highlight raw materials and subtle cultural motifs that pay tribute to both Japanese minimalism and Mexican craftsmanship. The space is an ensemble of custom woodwork, concrete finishes, and vibrant neon art—a convergence of elements that mirror the adventurous spirit of the hybrid menu.

From the initial sketches to detailed plans, the project required an intimate understanding of spatial harmony. Black Taiga isn't just a place to eat; it's an experience—a dialogue of cultures told through design and gastronomy, where every corner and every detail contributes to the story of culinary convergence.

**Contributions: Conceptual Design, Schematic Design, Design Development, Construction Documentation, Construction Inspection, Furniture Design**





## Tlecan

Modern echoes of ancient Mexico

Featured in North America's 50 Best Bars, Tlecan, a high-end mezcaleria in Mexico City, allowed me to delve deep into exploring cultural identity through architecture. From the initial schematic designs to overseeing the construction process, I was committed to crafting a space that reverently reflects mezcal's rich history.

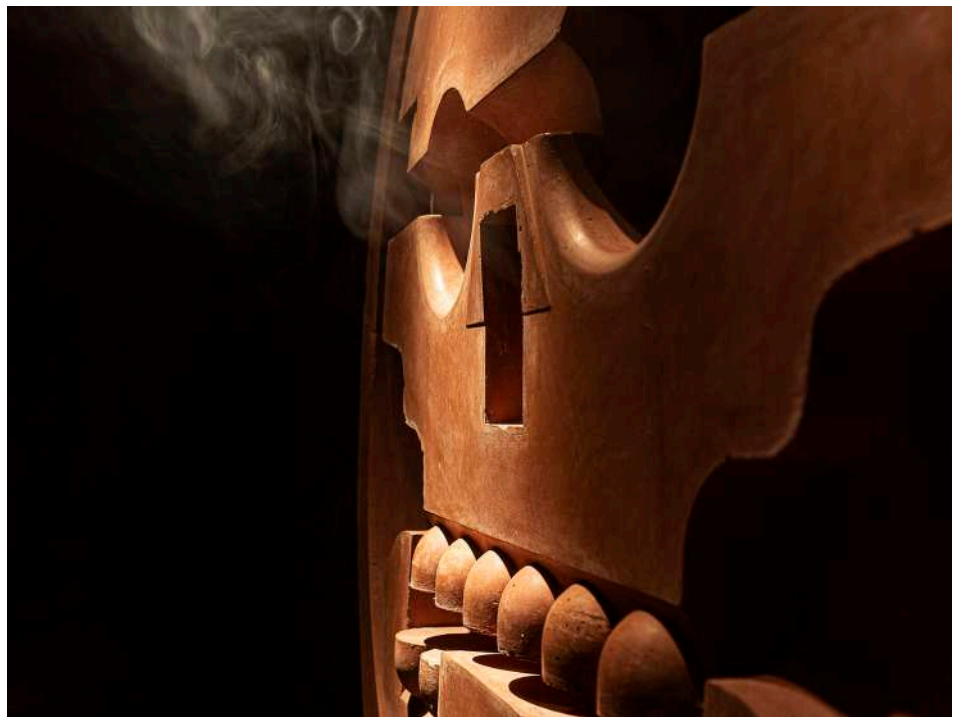
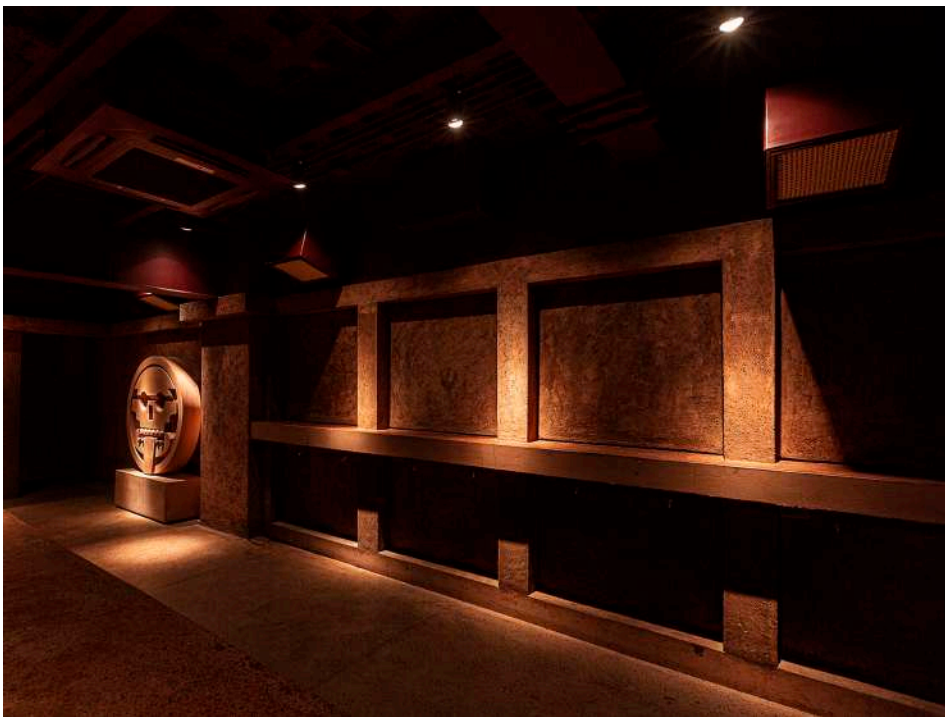
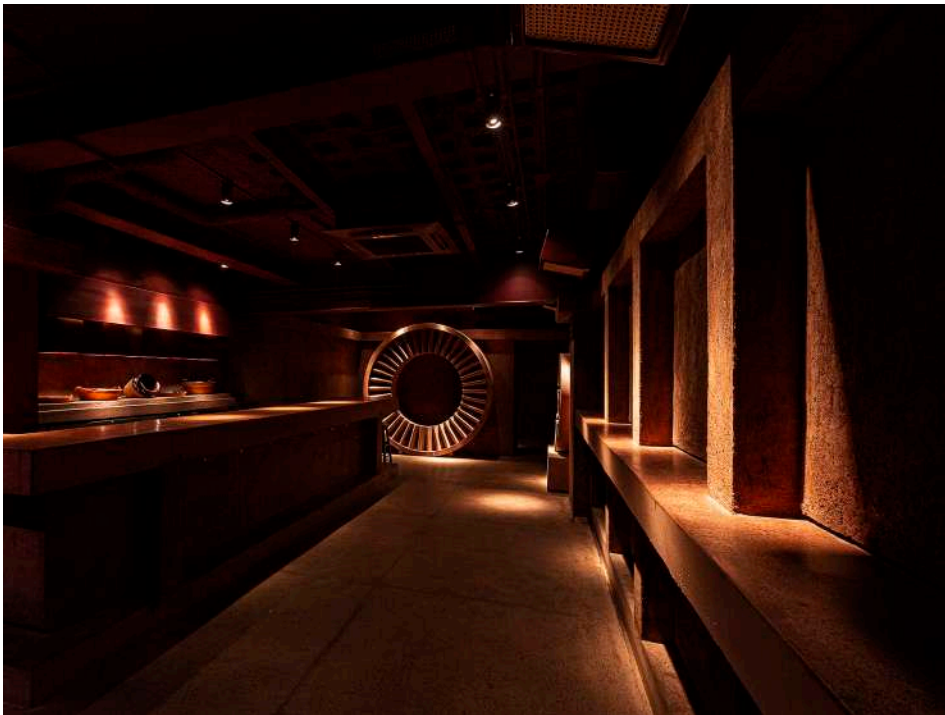
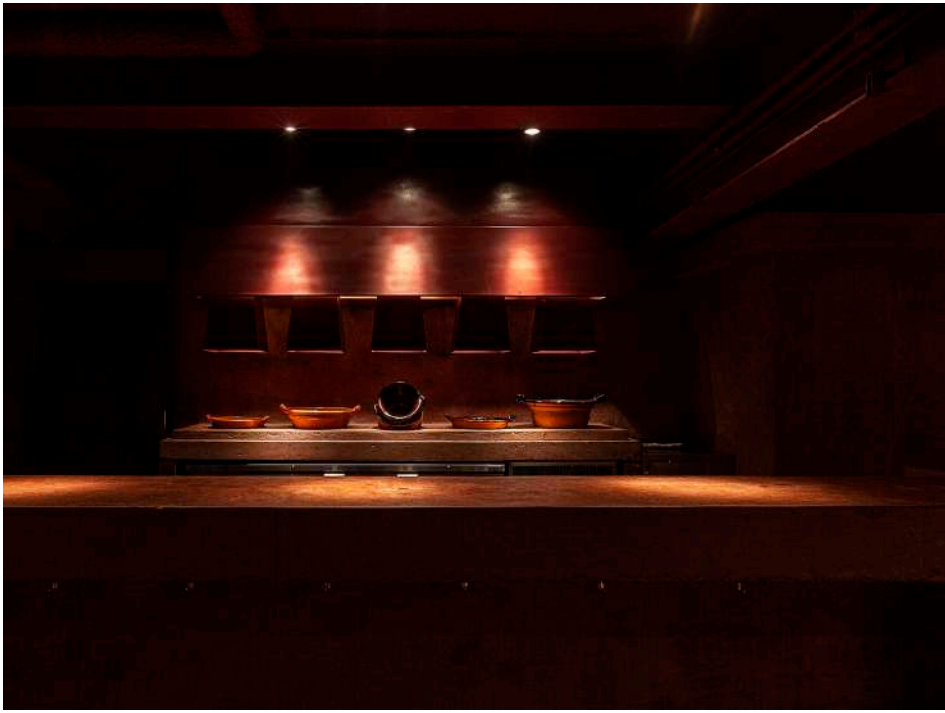
Drawing inspiration from the solemnity of precolonial Mexico, I chose to utilize tezontle, a porous, earth-toned volcanic stone significant in Mexican architecture. This material grounds the space in the textures of the past, offering a tactile experience that complements the robust flavors of mezcal. The tezontle not only adds depth and authenticity but also creates a sensory connection between the environment and the drink.

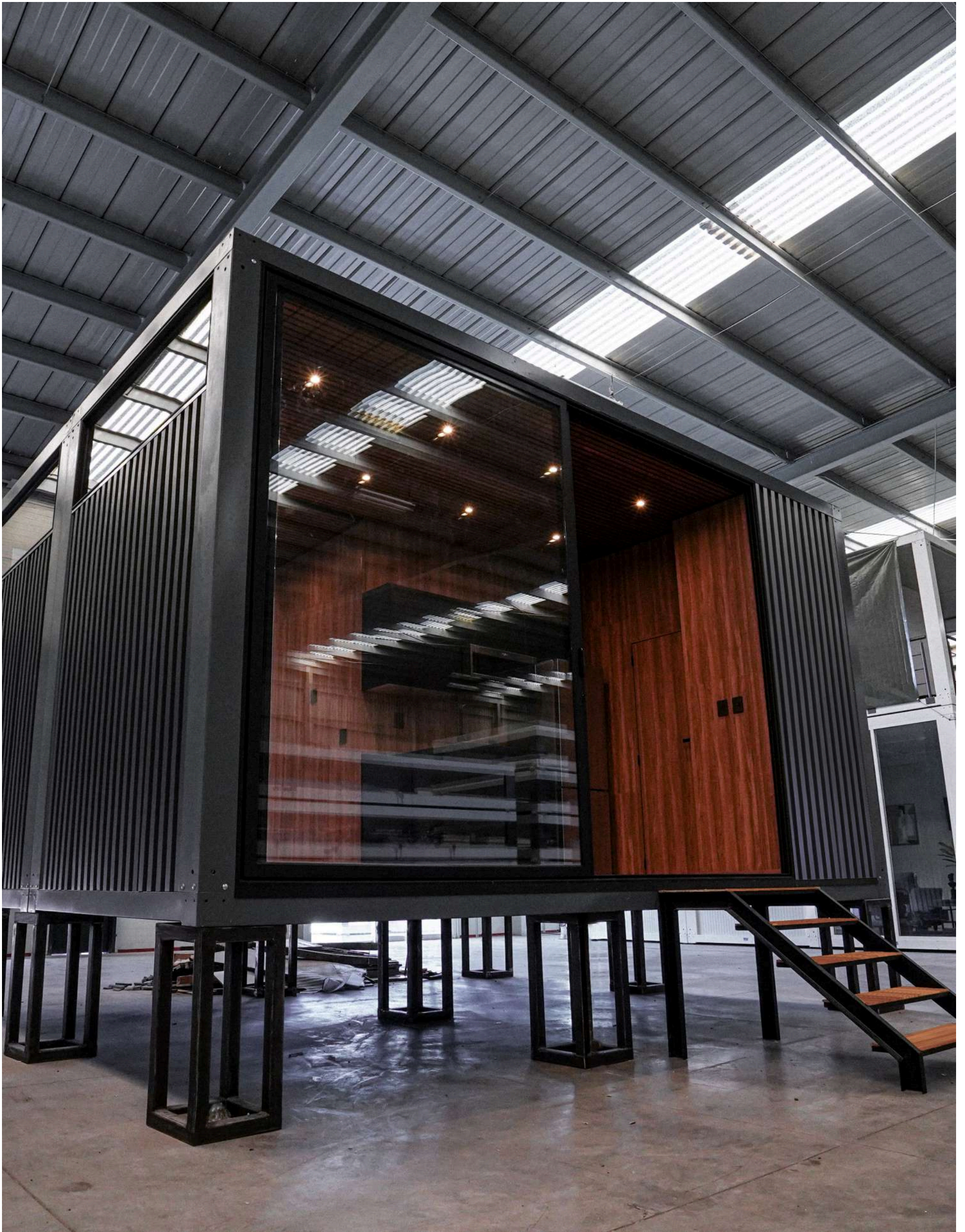
Throughout the project, I approached each phase with intellectual rigor to ensure the space serves as both a tribute to tradition and an example of modern design principles. Embracing minimalism as the core design ethos allowed the complexity of mezcal to take center stage. Subdued lighting and raw materials form a backdrop that encourages contemplation and conversation, providing a peaceful retreat from the city's bustling energy.

My goal was to imbue Tlecan with a sense of authenticity and simplicity, enabling guests to engage deeply with the spirit of mezcal in a setting that's both historically informed and relevant to today. The result is an environment that fosters a dialogue between the drink and its historical roots, offering an immersive experience that resonates with the cultural significance of mezcal.

 Roberto Andonie.  
[www.robertoandonie.com](http://www.robertoandonie.com)

**Contributions:** Material Selection, Conceptual Design, Schematic Design, Design Development, Construction Documentation, Construction Inspection, Furniture Design





## Casa Neutra

Essence of Modern, Modular Living

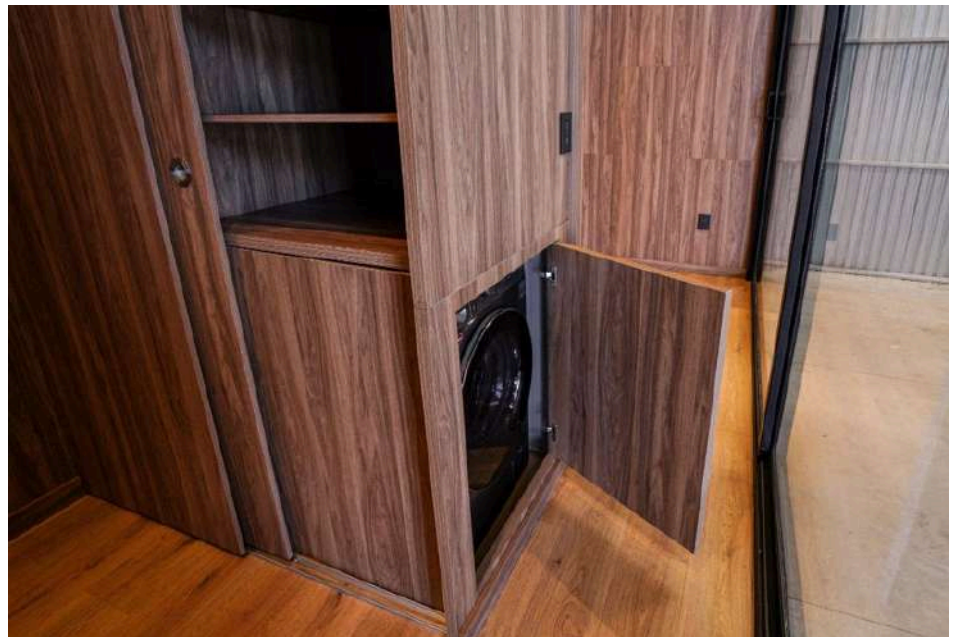
With Casa Neutra, I had the chance to rethink what a tiny home can be. I wanted to prove that compact living doesn't have to sacrifice elegance or comfort. As the head of design at Kambio, my goal was clear: create a dwelling that can be quickly assembled, easily transported, and doesn't require specialized on-site construction—all while maintaining a beautiful aesthetic.

We focused on modular and prefabricated construction to achieve flexibility and efficiency. The clean lines and uncluttered spaces not only give the home a modern, timeless appeal but also maximize livability within a small footprint. This minimalist approach enhances both form and function.

Every element was carefully considered. We integrated green technologies and strategically placed expansive windows to blur the line between indoor and outdoor living. This not only brings in natural light but also connects the inhabitants with their surroundings, making the space feel larger and more open.

Casa Neutra stands as a testament to innovative design where efficiency and environmental mindfulness go hand in hand. It's more than just a place to live; it's a bold statement about the sustainable possibilities of modern housing. Creating this home allowed me to blend practicality with aesthetics, showing that tiny living can indeed be both stylish and comfortable.

**Contributions:** Conceptual Design, Schematic Design, Design Development, Construction Documentation, Construction Inspection, Material Selection, Engineering Coordination, Interactive Visualization



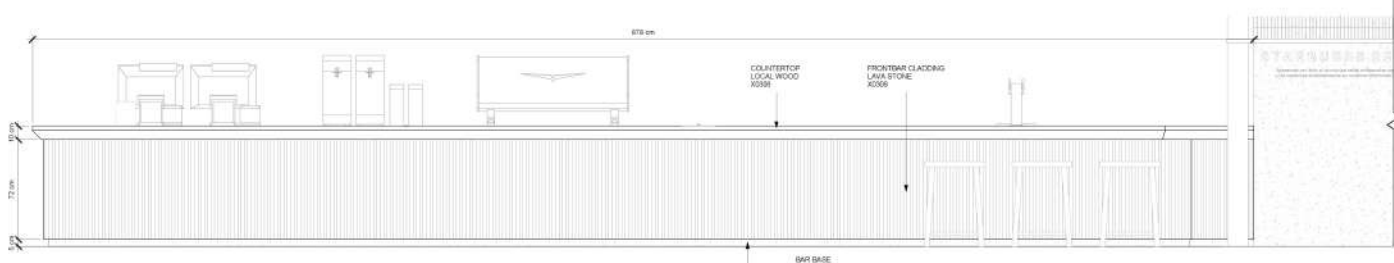
## Documentation

Drawings, Details, Sketches

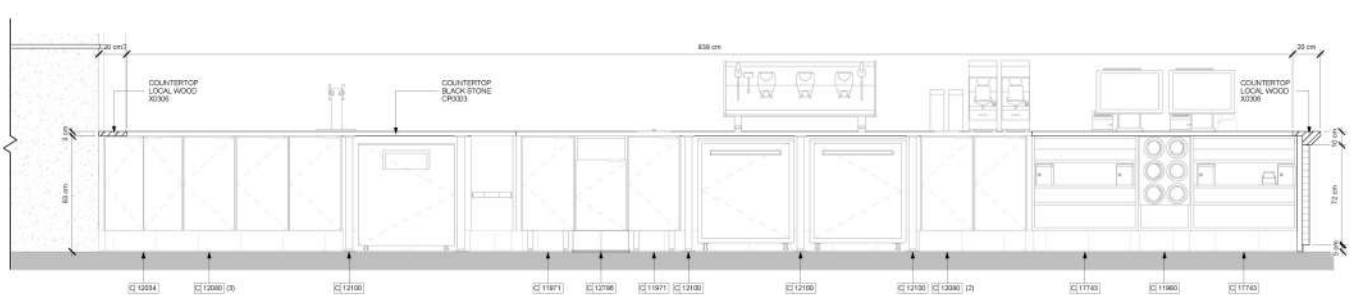




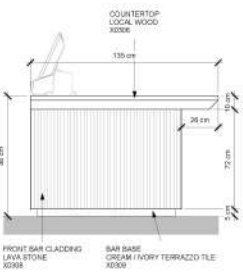
11/16/2017 11:41:18 PM C:\Users\andonr\Desktop\Items - Data\Team\SQLVARL\_FROM\_SQLVARL\FROM\_SQLVARL\021115-7776-001\_Artz Pedregal\_002.rvt



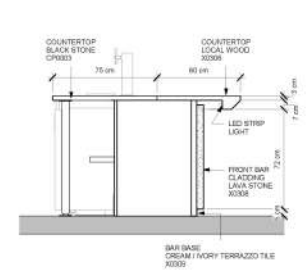
1 ELEVATION @ CRAFT BAR (CUSTOMER SIDE)  
Scale: 1:15



2 ELEVATION @ CRAFT BAR (BARISTA SIDE)  
Scale: 1:15



3 DETAIL @ CRAFTBAR SIDE  
Scale: 1:15



4 DETAIL @ CRAFTBAR  
Scale: 1:15



**STARBUCKS COFFEE COMPANY**  
2401 UTAH AVENUE SOUTH  
SEATTLE, WASHINGTON 98134  
(206) 318-1575

THESE DRAWINGS AND SPECIFICATIONS ARE CONFIDENTIAL AND SHALL REMAIN THE SOLE PROPERTY OF STARBUCKS CORPORATION, WHICH IS THE OWNER OF THE COPYRIGHT IN THIS WORK. THEY SHALL NOT BE REPRODUCED IN WHOLE OR IN PART, SHARED WITH THIRD PARTIES OR USED IN ANY MANNER IN CONNECTION WITH THIS PROJECT WITHOUT THE PRIOR WRITTEN CONSENT OF STARBUCKS CORPORATION. THESE DRAWINGS AND SPECIFICATIONS ARE INTENDED TO EXPRESS DESIGN INTENT FOR A PROTOTYPICAL STARBUCKS STORE. EACH IS SUBJECT TO CHANGE AT ANYTIME AND DO NOT REFLECT ACTUAL SITE CONDITIONS. NEITHER PARTY SHALL HAVE ANY LIABILITY OR LIABILITY TO THE OTHER (EXCEPT AS STATED ABOVE) UNTIL A WRITTEN AGREEMENT IS FULLY EXECUTED BY BOTH PARTIES.

STARBUCKS TEMPLATE VERSION: 8/9/2017 (P.03)

**ARCHITECT OF RECORD**  
THIS DRAWING IS A DESIGN DEVELOPMENT DOCUMENT. SITE SPECIFIC MODIFICATIONS MADE UNDER THE RESPONSIBILITY OF THE ARCHITECT, ENGINEER, AND/OR ENGINEER-OF-RECORD SHALL BE REQUIRED FOR CONSTRUCTION. USING THIS DOCUMENT FOR RECORD, PERMITTING, OR CONSTRUCTION.

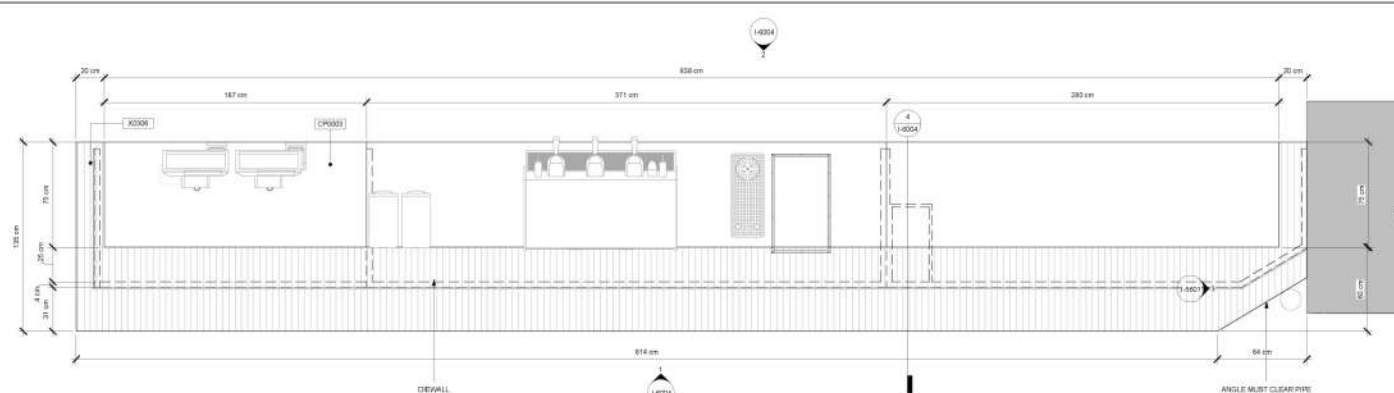
**PROJECT NAME:** ARTZ PEDREGAL  
**PROJECT ADDRESS:** JARDINES DEL PEDREGAL, MEXICO CITY, MEXICO

**STORE #:** 77760-001  
**PROJECT #:** 77760-001  
**CASWORK CONCEPT:** 18 NOV 2017  
**PROGRAM MANAGER:** KEVIN DEL CORRAL  
**LEED AP:** KEVIN DEL CORRAL  
**CHECKED BY:** DENISE RODRIGUEZ

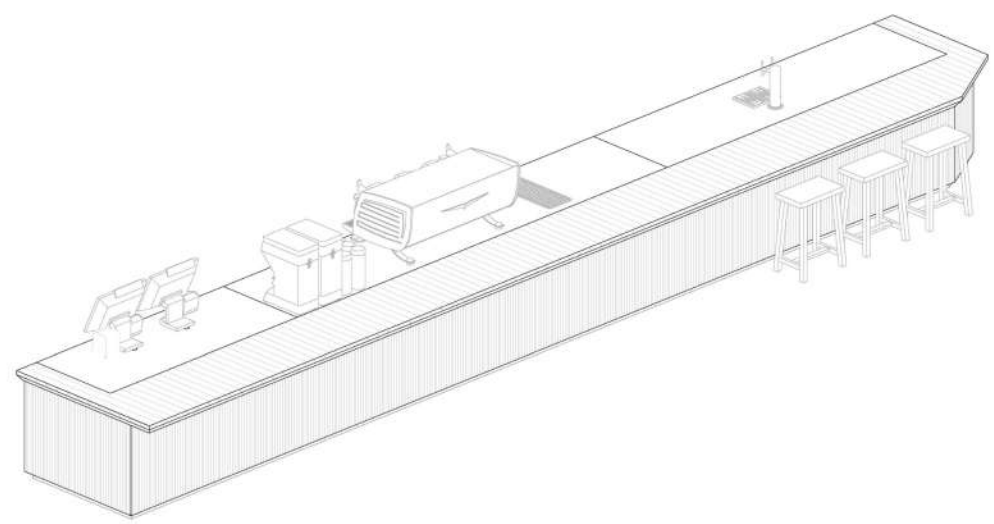
Rev	Date	By	Description

**SHEET TITLE:** DESIGN DETAILS  
**SCALE:** AS SHOWN  
**SHEET NUMBER:** I-6004


11/16/2017 11:41:18 PM C:\Users\andonr\Desktop\Items - Data\Team\SQLVARL\_FROM\_SQLVARL\FROM\_SQLVARL\021115-7776-001\_Artz Pedregal\_002.rvt



1 DETAIL @ CRAFTBAR  
Scale: 1:15



2 VIEW @ CRAFTBAR  
Scale: 1:15



**STARBUCKS COFFEE COMPANY**  
2401 UTAH AVENUE SOUTH  
SEATTLE, WASHINGTON 98134  
(206) 318-1575

THESE DRAWINGS AND SPECIFICATIONS ARE CONFIDENTIAL AND SHALL REMAIN THE SOLE PROPERTY OF STARBUCKS CORPORATION, WHICH IS THE OWNER OF THE COPYRIGHT IN THIS WORK. THEY SHALL NOT BE REPRODUCED IN WHOLE OR IN PART, SHARED WITH THIRD PARTIES OR USED IN ANY MANNER IN CONNECTION WITH THIS PROJECT WITHOUT THE PRIOR WRITTEN CONSENT OF STARBUCKS CORPORATION. THESE DRAWINGS AND SPECIFICATIONS ARE INTENDED TO EXPRESS DESIGN INTENT FOR A PROTOTYPICAL STARBUCKS STORE. EACH IS SUBJECT TO CHANGE AT ANYTIME AND DO NOT REFLECT ACTUAL SITE CONDITIONS. NEITHER PARTY SHALL HAVE ANY LIABILITY OR LIABILITY TO THE OTHER (EXCEPT AS STATED ABOVE) UNTIL A WRITTEN AGREEMENT IS FULLY EXECUTED BY BOTH PARTIES.

STARBUCKS TEMPLATE VERSION: 8/9/2017 (P.03)

**ARCHITECT OF RECORD**  
THIS DRAWING IS A DESIGN DEVELOPMENT DOCUMENT. SITE SPECIFIC MODIFICATIONS MADE UNDER THE RESPONSIBILITY OF THE ARCHITECT, ENGINEER, AND/OR ENGINEER-OF-RECORD SHALL BE REQUIRED FOR CONSTRUCTION. USING THIS DOCUMENT FOR RECORD, PERMITTING, OR CONSTRUCTION.

**PROJECT NAME:** ARTZ PEDREGAL  
**PROJECT ADDRESS:** JARDINES DEL PEDREGAL, MEXICO CITY, MEXICO

**STORE #:** 77760-001  
**PROJECT #:** 77760-001  
**CASWORK CONCEPT:** 18 NOV 2017  
**PROGRAM MANAGER:** KEVIN DEL CORRAL  
**LEED AP:** KEVIN DEL CORRAL  
**CHECKED BY:** DENISE RODRIGUEZ

Rev	Date	By	Description

**SHEET TITLE:** DESIGN DETAILS  
**SCALE:** AS SHOWN  
**SHEET NUMBER:** I-6003

# Starbucks Reserve Artz Pedregal

Mexican artistry brews with worldclass coffee culture.



## Blend Station II

Crafting Connections

Designing Blend Station 2 in Roma Norte was a truly rewarding experience. I wanted to create a space that captures the lively essence of the neighborhood, a place where people feel comfortable gathering, chatting, and savoring artisanal coffee in a setting that reflects their community.

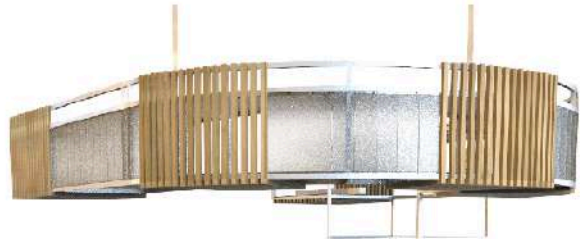
From the initial concept to overseeing construction, I focused on infusing the cafe with the area's communal energy. One of the aspects I'm particularly proud of is the custom terrazzo flooring. Collaborating with local artisans, we crafted unique color blends and patterns that add a contemporary touch while honoring traditional craftsmanship.

The furniture was carefully designed to balance form and function. Warm wooden chairs and bar stools with vibrant accents weren't just chosen for their looks; they play a key role in making the space inviting and personable. Each piece contributes to an atmosphere that encourages patrons to relax and connect.

Every detail in Blend Station 2 was thoughtfully considered to create an environment where design and social interaction go hand in hand. It's more than just a café—it's a welcoming retreat where the hustle of the city fades, and people can enjoy good coffee and great company. This project allowed me to blend my passion for design with a deep appreciation for the local culture, resulting in a space that feels both familiar and fresh.

**Contributions:** Conceptual Design, Schematic Design, Design Development, Construction Documentation, Construction Inspection, Furniture Design

BLEND STATION PUEBLA



12. COPERÓ

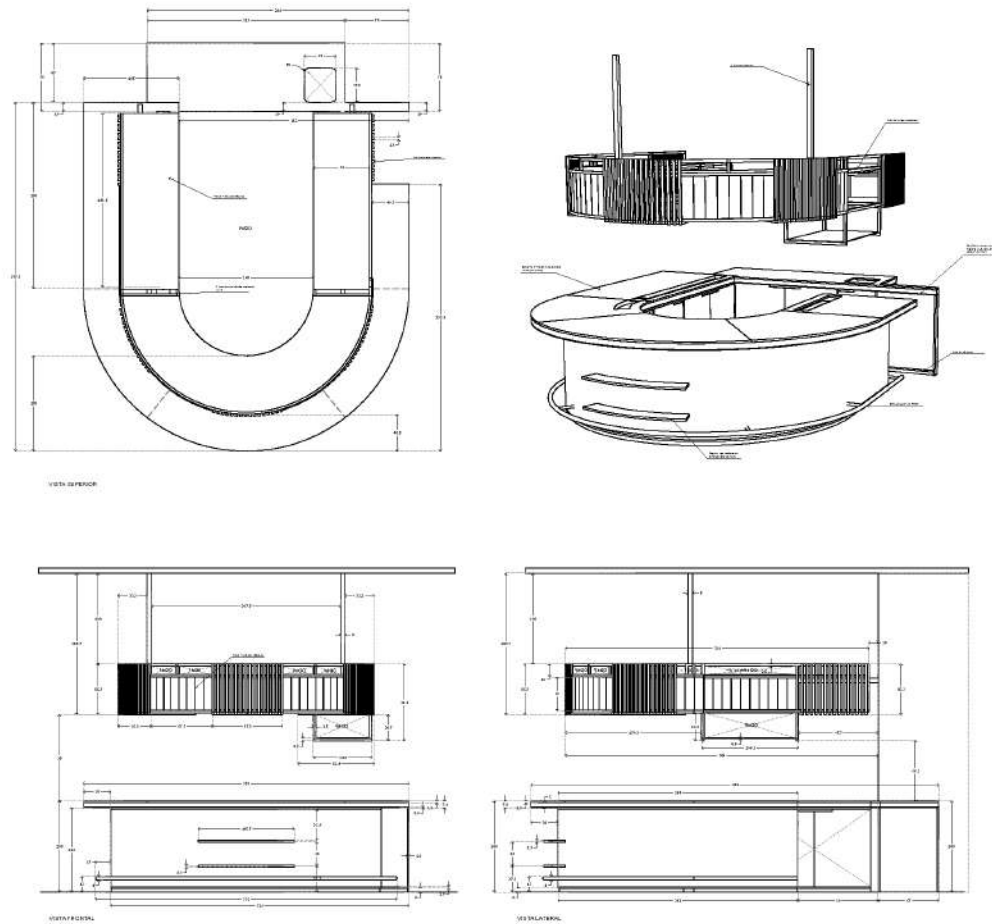
CANTIDAD: 1 PIEZA

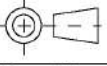
NOTA: Considerar dimensiones para envío, y colocación en sitio

ACABADO: Madera de Encino, vidrio opaco, estructura en Perfil con pintura electrostática).

Portfolio: [www.robertoandonie.com](http://www.robertoandonie.com)  
Contact: [roberto.andonie@gmail.com](mailto:roberto.andonie@gmail.com)

MOBILIARIO DE INTERIOR



LÍNEA: BLEND	No DE PARTE:	DIBUJO: David Valdivia	No PLANO: 01	
NOMBRE: <b>BARRA / COPERÓ</b>	MATERIAL: VARIOS	REVISO:	FECHA: 30/10/18	
CLIENTE: BLEND	CLAVE: BLRE - MB12	APROBO:		
	MODELO:	TOLERANCIAS GENERALES SALVO LAS INDICADAS		
		LÍNEAL: +/- 0.5 mm	ANGULAR: +/- 10°	ESPESOR: +/- 0.25 mm
			ESC: 1:55	ACOT: Cm

Portfolio: [www.robertoandonie.com](http://www.robertoandonie.com)  
Contact: [roberto.andonie@gmail.com](mailto:roberto.andonie@gmail.com)

## Blend Station II

Crafting Connections



12. BARRA

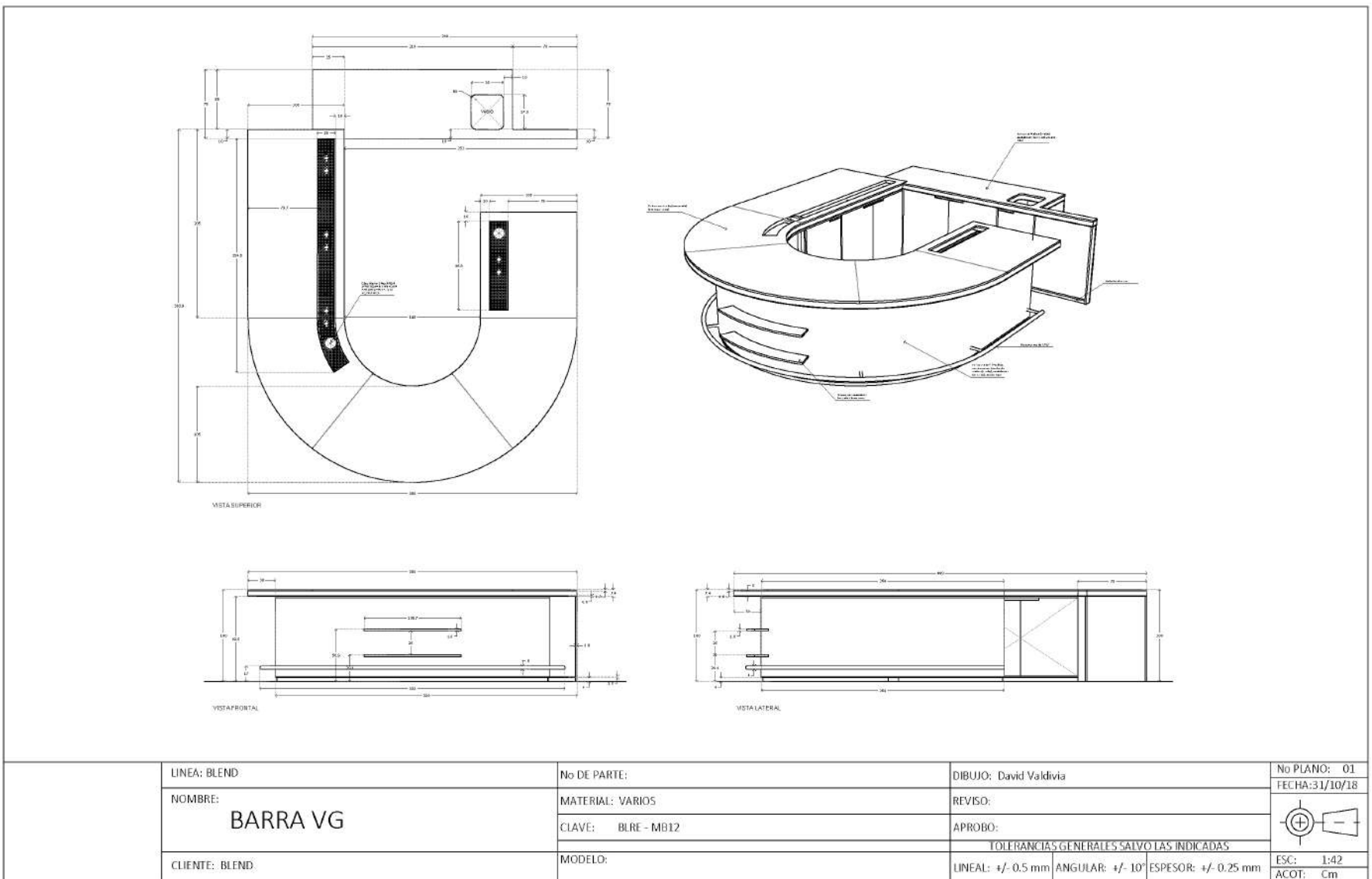
CANTIDAD: 1 PIEZA

NOTA: Considerar dimensiones para envío, y colocación en sitio

ACABADO: Madera de Encino, laminado blanco, estructura en Perfil con pintura electrostática.

Portfolio: [www.robertoandonie.com](http://www.robertoandonie.com)  
Contact: [robertoandonie@gmail.com](mailto:robertoandonie@gmail.com)

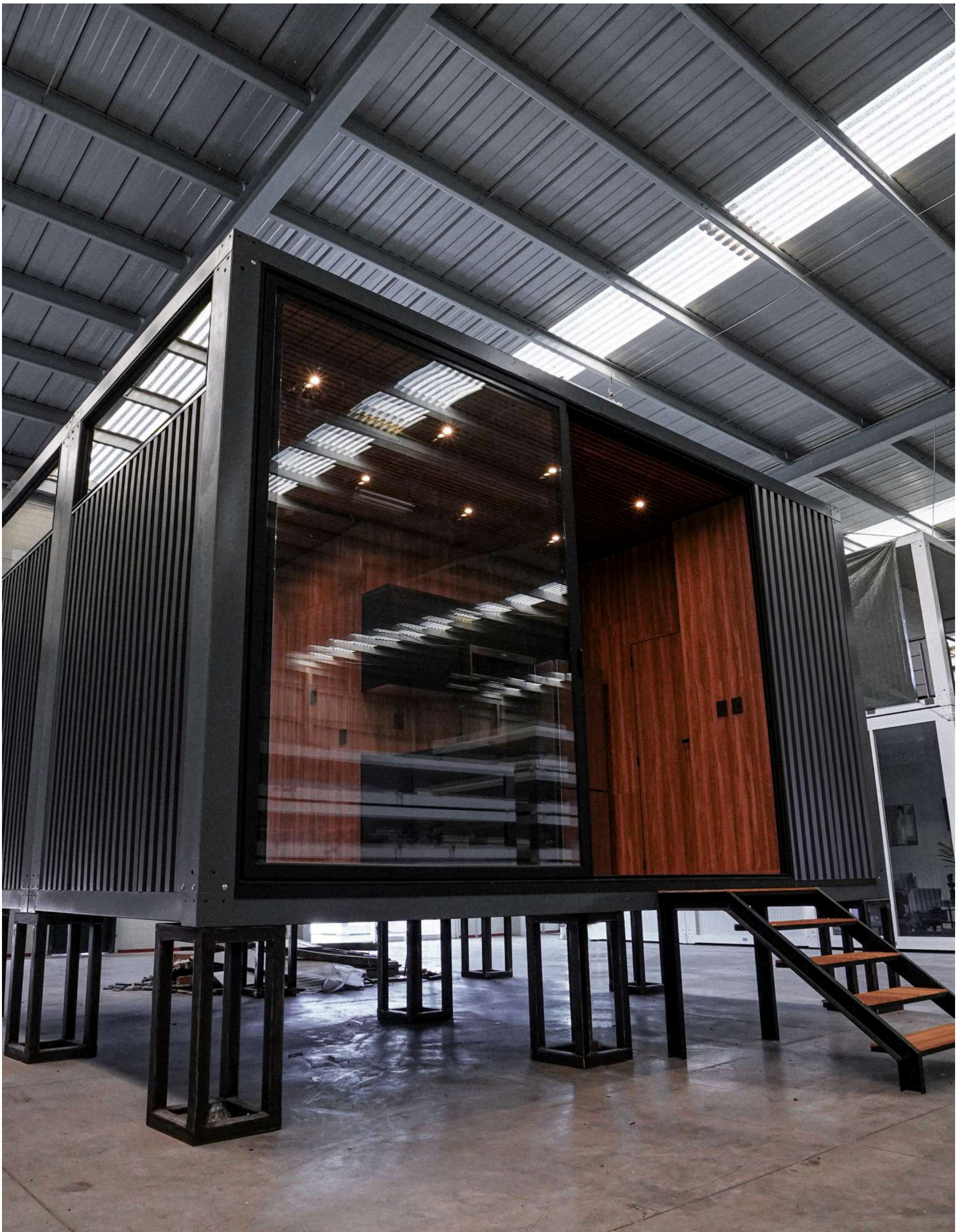
MOBILIARIO DE INTERIOR



Portfolio: [www.robertoandonie.com](http://www.robertoandonie.com)  
Contact: [robertoandonie@gmail.com](mailto:robertoandonie@gmail.com)

Blend Station II

Crafting Connections



## Casa Neutra

Essence of Modern, Modular Living

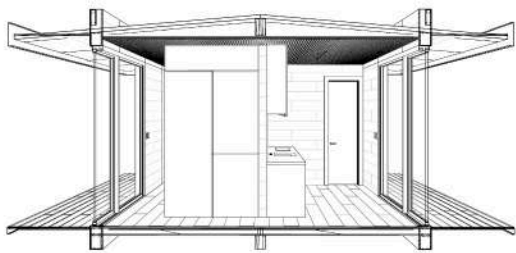
With Casa Neutra, I had the chance to rethink what a tiny home can be. I wanted to prove that compact living doesn't have to sacrifice elegance or comfort. As the head of design at Kambio, my goal was clear: create a dwelling that can be quickly assembled, easily transported, and doesn't require specialized on-site construction—all while maintaining a beautiful aesthetic.

We focused on modular and prefabricated construction to achieve flexibility and efficiency. The clean lines and uncluttered spaces not only give the home a modern, timeless appeal but also maximize livability within a small footprint. This minimalist approach enhances both form and function.

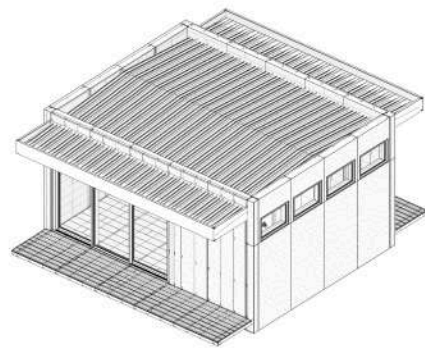
Every element was carefully considered. We integrated green technologies and strategically placed expansive windows to blur the line between indoor and outdoor living. This not only brings in natural light but also connects the inhabitants with their surroundings, making the space feel larger and more open.

Casa Neutra stands as a testament to innovative design where efficiency and environmental mindfulness go hand in hand. It's more than just a place to live; it's a bold statement about the sustainable possibilities of modern housing. Creating this home allowed me to blend practicality with aesthetics, showing that tiny living can indeed be both stylish and comfortable.

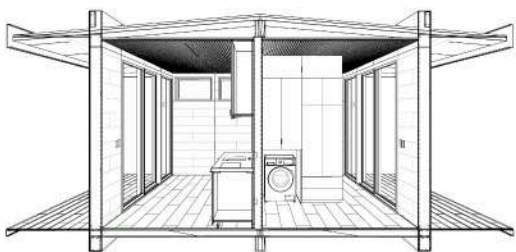
**Contributions:** Conceptual Design, Schematic Design, Design Development, Construction Documentation, Construction Inspection, Furniture Design.



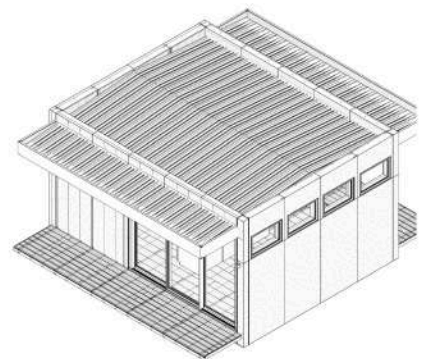
3 CORTE PERSPECTIVADO 1 - LISTADO DE PLANOS  
Fecha: 09/05/2023



1 ISOMETRÍA 1 - LISTADO DE PLANOS  
Fecha: 09/05/2023



4 CORTE PERSPECTIVADO 2 - LISTADO DE PLANOS  
Fecha: 09/05/2023



2 ISOMETRÍA 2 - LISTADO DE PLANOS  
Fecha: 09/05/2023

LISTADO DE PLANOS	
CLAVE	NOMBRE
A1-100	PLANTA EJECUTIVA Y TIRAZO
A1-600	PLANTA DE TECHOS REFLEJADOS, APAGADORES Y ELECTRICIDAD
A0-033	TABLA DE ILUMINACIÓN
A0-034	TABLA DE EQUIPOS
A0-032	TIPOS DE MURO Y DETALLES GENERALES
A0-020	SIMBIOLOGÍA
A0-000	PORTADA
A0-001	LISTADO DE PLANOS
A0-010	NOTAS GENERALES
A0-030	TABLA DE PUERTAS
A0-031	TABLA DE ACABADOS
A1-200	ACABADOS EN MURO Y PISO
A2-100	ELEVACIONES AMPLIADAS CONSTRUCTIVAS
A3-100	CORTES CONSTRUCTIVOS
A6-100	CORTES POR FACHADA
A5-101	PLANOS AMPLIADOS DE COCINA
A5-103	PLANOS AMPLIADOS DE BAÑO
A5-102	PLANOS AMPLIADOS DE RECÁMARA-SALA
A6-101	DETALLES DE CARPINTERÍAS
A6-301	DETALLES GENERALES
A3-101	CORTES CONSTRUCTIVOS
A6-101	CORTES POR FACHADA
A6-102	DETALLES DE CARPINTERÍAS
A6-103	DETALLES DE CARPINTERÍAS
A6-104	DETALLES DE CARPINTERÍAS
A0-021	ABREVIACIONES

**KAMBIO**

KAMBIO  
MODULAR CONSTRUCCIÓN SUSTENTABLE CREADOR  
DE SPACES DE VIDA

PROYECTO:  
CASA NEUTRA  
UBICACIÓN:  
PUNTA DE VIEJA

NOTAS GENERALES:  
1. EL DISEÑO DE ESTA OBRA SE HA DESARROLLADO EN  
EL MARCO DE LA LEY DE OBRAS DE CONSTRUCCIÓN  
DE LA REPÚBLICA ARGENTINA, Y SE HA CUMPLIDO  
CON LOS REQUISITOS ESTABLECIDOS EN LA  
LEGISLACIÓN VIGENTE EN MATERIA DE OBRAS  
DE CONSTRUCCIÓN EN EL SECTOR DE OBRAS  
DE CONSTRUCCIÓN DE EDIFICIOS DE HOGAR.

REVISIONES:  
# FECHA REVISOR  
# FECHA REVISOR

NUMERO DE REVISION: 1  
FECHA: 09-05-2023  
DIBUJO: AG  
APROBADO: MR  
ESCALA (80 X 60 CMS):  
ESCALA (11 X 17 PULG):  
DIBUJO:

LISTADO DE PLANOS

A0-001

## Casa Neutra

Essence of Modern, Modular Living

With Casa Neutra, I had the chance to rethink what a tiny home can be. I wanted to prove that compact living doesn't have to sacrifice elegance or comfort. As the head of design at Kambio, my goal was clear: create a dwelling that can be quickly assembled, easily transported, and doesn't require specialized on-site construction—all while maintaining a beautiful aesthetic.

We focused on modular and prefabricated construction to achieve flexibility and efficiency. The clean lines and uncluttered spaces not only give the home a modern, timeless appeal but also maximize livability within a small footprint. This minimalist approach enhances both form and function.

Every element was carefully considered. We integrated green technologies and strategically placed expansive windows to blur the line between indoor and outdoor living. This not only brings in natural light but also connects the inhabitants with their surroundings, making the space feel larger and more open.

Casa Neutra stands as a testament to innovative design where efficiency and environmental mindfulness go hand in hand. It's more than just a place to live; it's a bold statement about the sustainable possibilities of modern housing. Creating this home allowed me to blend practicality with aesthetics, showing that tiny living can indeed be both stylish and comfortable.

Contributions: Conceptual Design, Schematic Design, Design Development, Construction Documentation, Construction Inspection, Material Selection, Engineering Coordination, Interactive Visualization



## **Visualization**

Rendering, Modelling, CGI











---

## Contact

**Design & Architecture:**  
Roberto Andonie

**Phone:**  
(862) 344-2445

**Email:**  
roberto.andonie@gmail.com

**Website & Online Portfolio:**  
[www.robetoandonie.com](http://www.robetoandonie.com)