

ALEX ZAPATA

SELECTED WORKS / 2019 - 2024

EXPERIENCE

Jul 2024 - Current

AIA LA DAC (Graphics Sub Committee)

Graphic Designer

- Collaborated in the design and development of graphical materials for the promotion and execution of the 2024 AIA Design Awards

Sep 2023 - May 2024

CPP Architecture Department:

Architectural Graphic Designer

- Utilized desktop design software to space plan graphics of instructional and support spaces, campus map and title graphics for use in Department accreditation videos
- Used critical thinking to solve problems related to flyer creation, design, and printing

Jun 2022 - Aug 2022

Opal / Alimo Architects:

Architecture Intern

- Worked with real estate agents, contractors, and software programmers to create BIM Models
- Called and organizing contractors and engineers
- Tasked with plan checks, and permits from LADBS

May 2021

City of Pomona:

Zoning Proposition (Class Project)

- Proposed new and innovative zoning for the City of Pomona introducing a new type of higher density housing
- Presented to the City of Pomona staff through oral presentation and written staff report

EDUCATION

Masters in Architecture

Cal Poly Pomona

3.78 GPA

B.S. Urban and Regional Planning

Cal Poly Pomona

3.65 GPA / Magna Cum Laude

Architectural Design Concentration Level I Certificate

Mt. San Antonio College

HONORS & AWARDS

Interim Student Exhibit - Fall 22, Spring 23, Fall 23, Spring 24

LT Shanks Scholarship Winner - Summer 2023

Helmle Fellowship Workshop - Spring 2023

Housing Award Nominee - Spring 2023

SKILLS

Fluent

Adobe Illustrator

Adobe Photoshop

Adobe InDesign

AutoCAD

Bilingual (Spanish)

Hand Drafting

Microsoft Word

Revit

Rhino

Twin Motion

Familiar

Climate Consultant

Grasshopper

SketchUp

V-Ray

REFERENCES

Victor Jones (Professor)

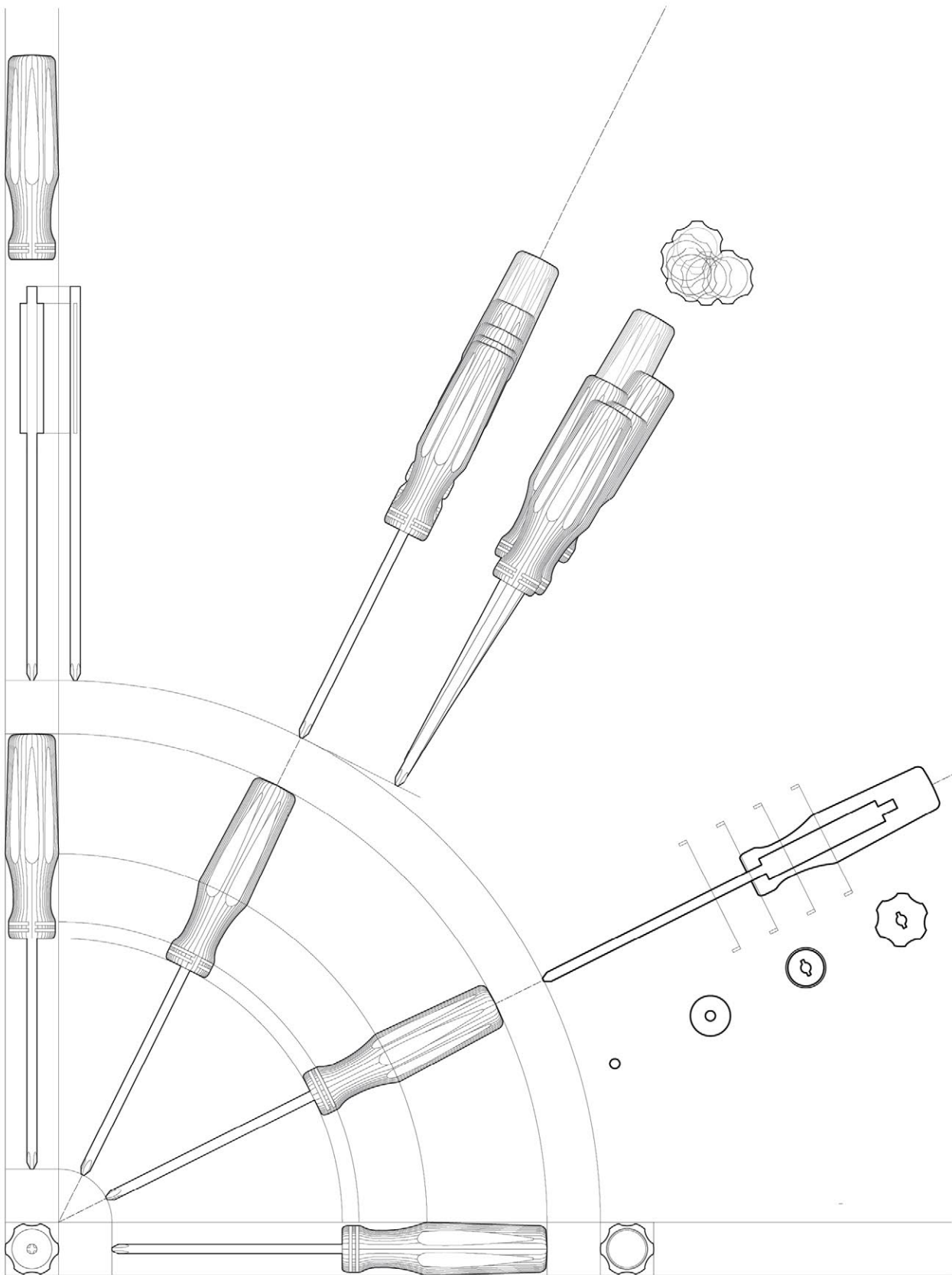
vjjones@cpp.edu

Roberto Sheinberg (Professor)

rsheinberg@cpp.edu

George Proctor (Professor/Employer)

grproctor@cpp.edu



Phillips Screwdriver

As the inaugural exercise of the M.Arch program, we were challenged to select a household tool and analyze it through detailed diagramming. From its elevations to its construction and the dynamics of its movements in use, this assignment marked the starting point of a transformative three-year journey.

CONTENTS

Enclave
Senior Project/ Spring 2024

01

Santa Ana Housing Project
Design Development Project / Spring 2023

02

Cantilever
Design Exercise / Fall 2022

03

The Jungle Gym
Team Project / Fall 2023

04

Hillside Retreat
Design Project / Spring 2021

05

Bas-Relief
Design Exercise/ Spring 2022

06

Collage Work

07

View My Full Development Set Here
A more in-depth look at the Santa Ana Multi-Family Housing Project



<https://shorturl.at/mpCRT>

Enclave

Date Spring 2024
Type Academic / 3rd Year Graduate Senior Project
Instructor Victor Jones

Throughout the years, Boyle Heights has served as an ethnic enclave for a multitude of different ethnic groups. Although the city still serves many of the traditional purposes of an ethnic enclave, the enclave of today looks different than before. Today, an enclave has the opportunity to serve a multitude of different people in ways not possible before.

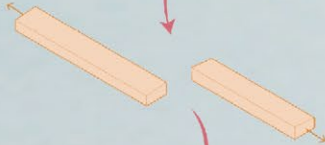
For this project, a miniature enclave designed to serve single mothers is proposed. This enclave will create a space for single mothers and their children to get the resources they require in order to strive forward in their lives. In this project, healthcare, educational, and employment resources will be provided for single mothers in an effort to provide them with the tools that will allow them to succeed. Along with these resources, a series of semi-permanent housing will be provided for families that need and wish to be housed. Whether it is job assistance, trade skill training, or even child care, this facility will help single mothers, both living in and outside of the facility, to gain the tools to push their families forward.



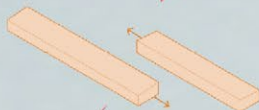
"House"
Slice and Split



Grow
Extrude



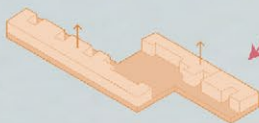
Overlap
Shift



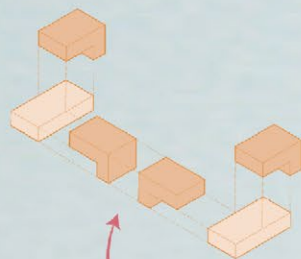
Bite
Subtract



Elevate
Add Platform



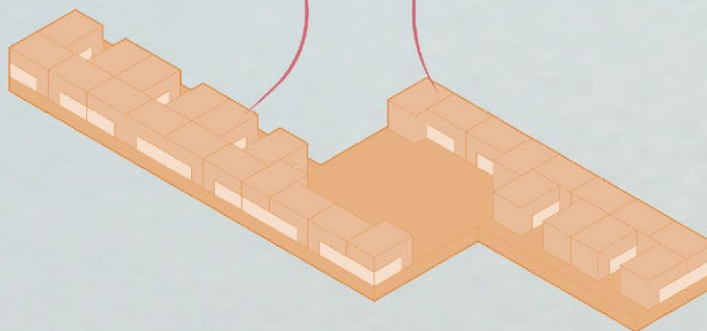
Units



Cluster



Massing

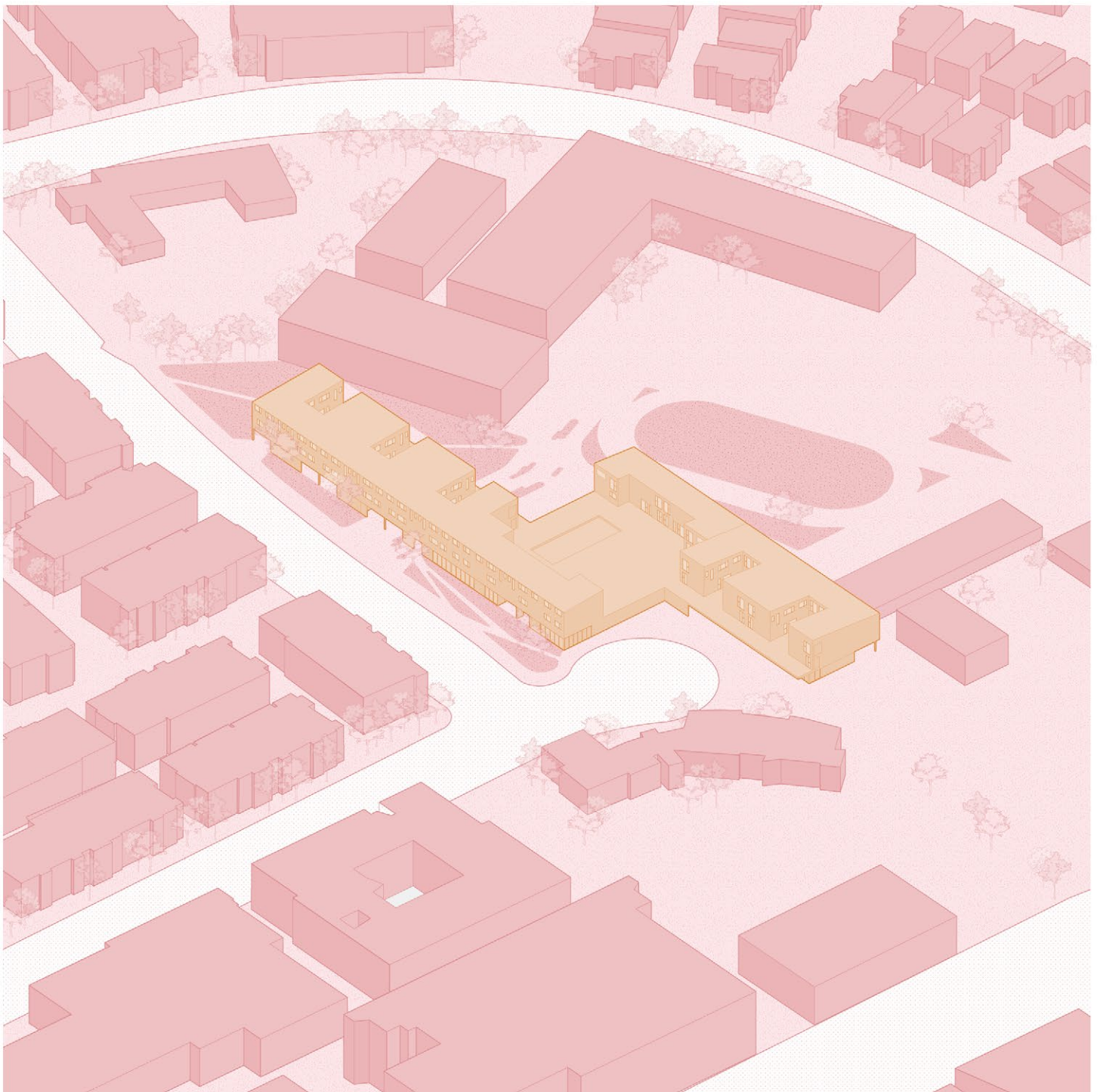


The design began with the simple, childlike form of a house, a square base topped with a triangular roof, and evolved into two bars set atop a podium. This form is oriented to

engage with the property's street frontage, nearby schools, and surrounding housing communities. The ground level serves as a flexible space for community amenities and services,

while 42 residential units are located on the second and third floors



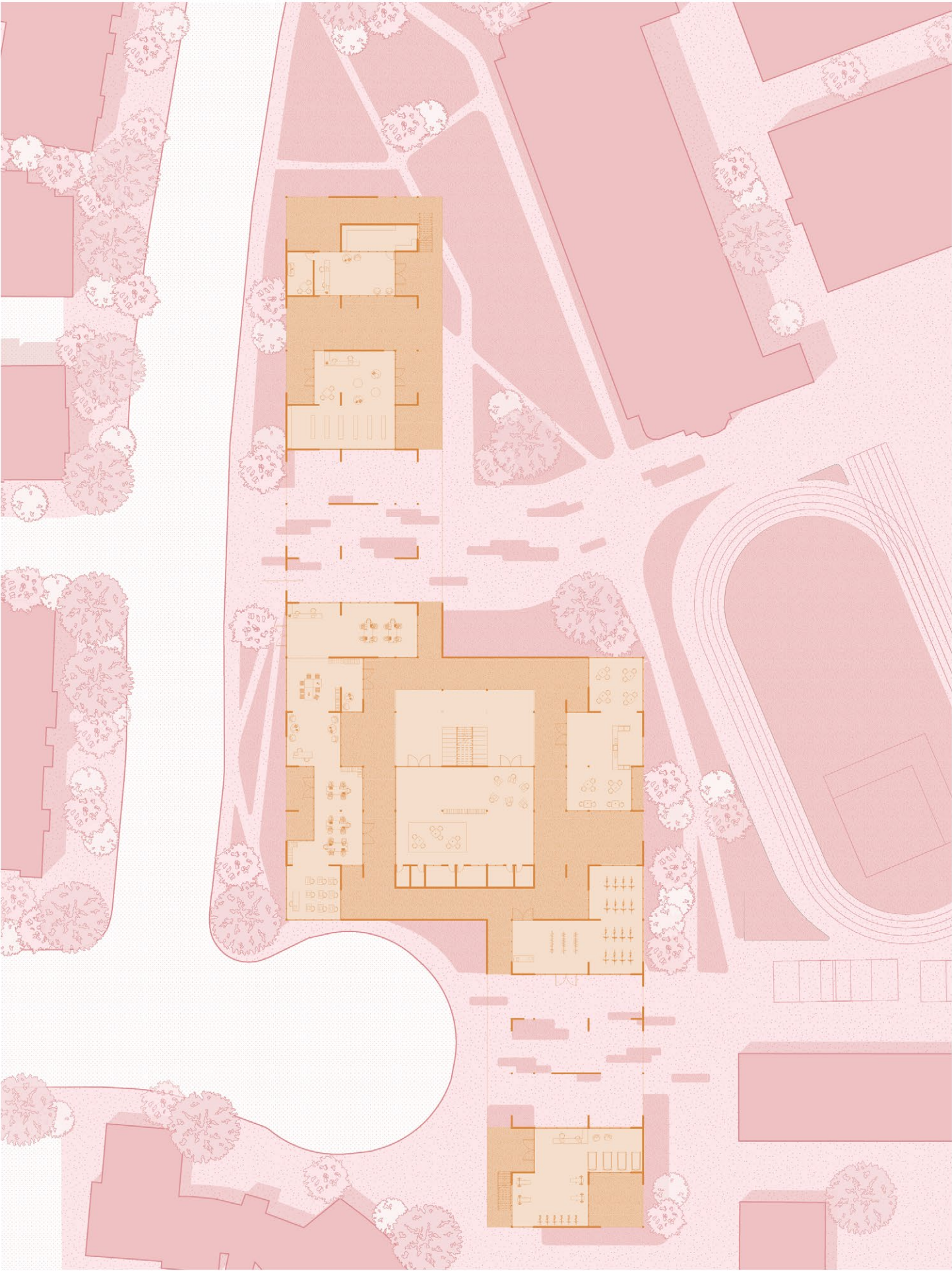


This project, in partnership with the non-profit organization SHE IS HOPE LA, seeks to expand access to vital resources, extending support to previously underserved communities.

SHE IS HOPE LA, is devoted to empowering single-mother families by providing a comprehensive suite of support services. The organization's name reflects its mission, standing for Single Moms, Housing & Empowerment, Inspiring Self-Confidence through Hope, Opportunity, Perseverance, & Education in Los Angeles

THESIS

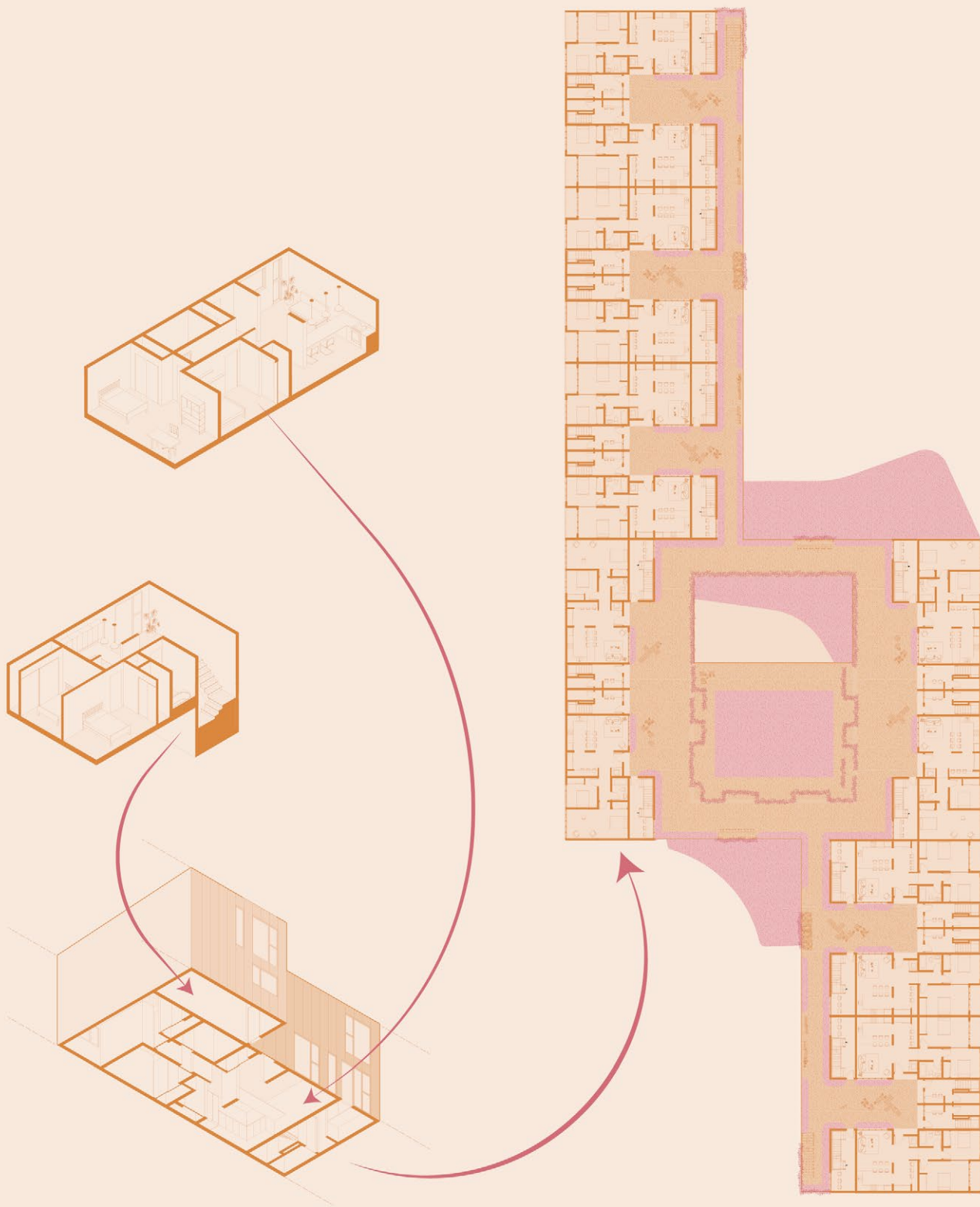
This project delves into the essence of an enclave, examining its principles on both micro and macro levels, reshaping our understanding of community, flexibility, and facilitation.

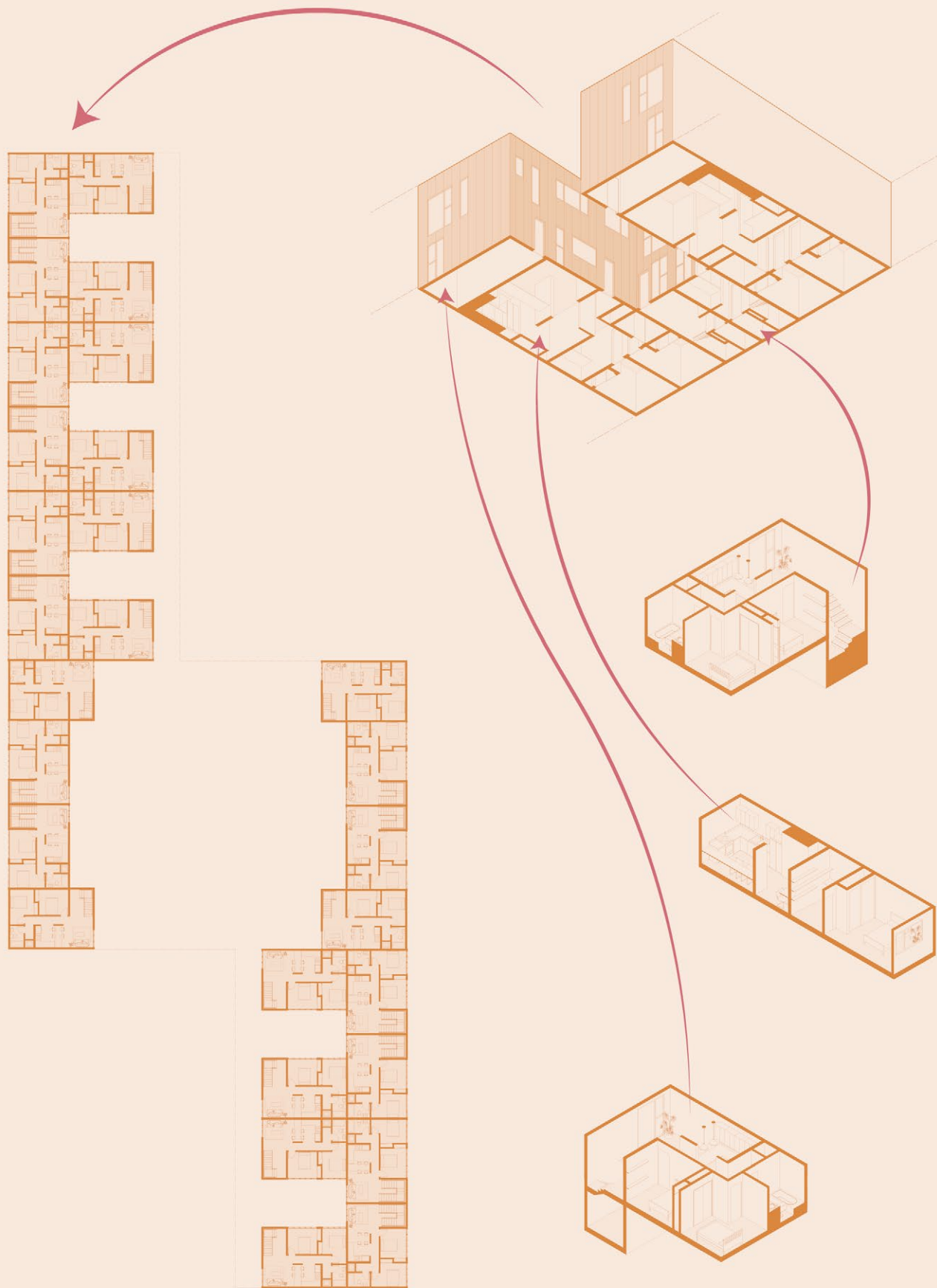


The residential units are arranged in clusters, reminiscent of 'vecindario' neighborhoods, each comprising six units that share a communal outdoor space. These clusters are complemented by community-wide

common areas dispersed throughout the project. Safety is a central concern, with play areas and child-friendly spaces enclosed by built structures to minimize risk and create a constant Jane Jacobs 'eyes on the street' effect.

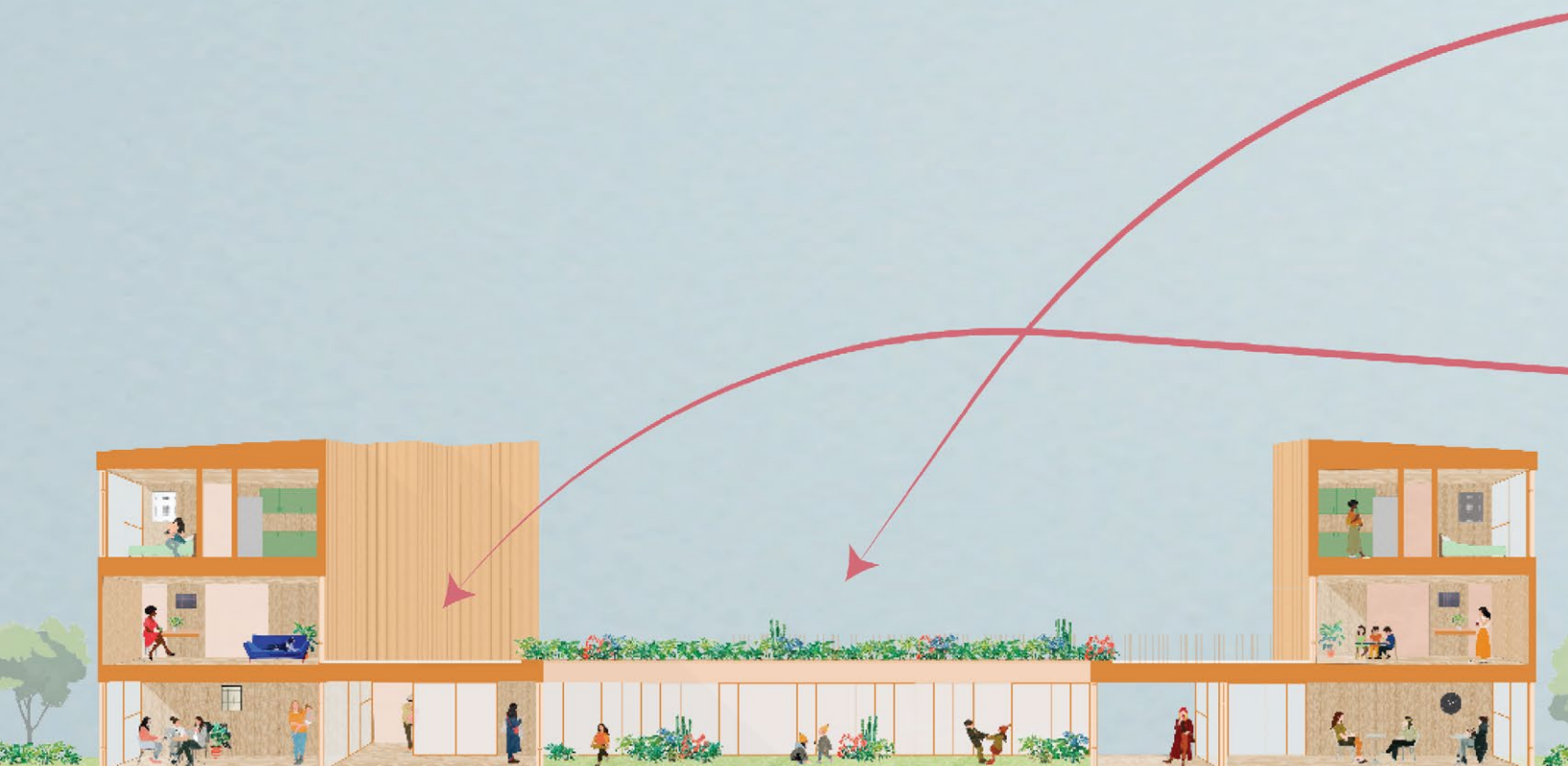
This focus on safety is seen in the design of the clusters and emphasized by the centrally located childcare center.

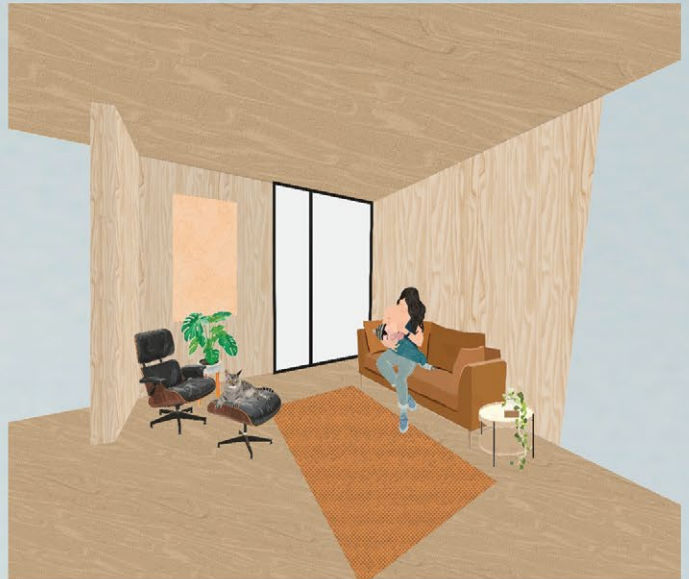




As someone raised by a single mother, I have seen firsthand the struggles a single mother goes through trying to get her family ahead. Although there are some aspects of that experience that this project may not fix, this project would provide a solid foundation for these women and children to start a new life.

For 20 years, my mother took care of her son alone. Although her journey of needing to raise a child by herself has ended, That journey is just now starting for another mother. The journey of that mother will look very similar to that of my mother's, but today, new and unforeseen challenges arise that don't need to be handled alone.





Unit Living Room



Daycare



Communal Outdoor Space

Santa Ana Housing Project

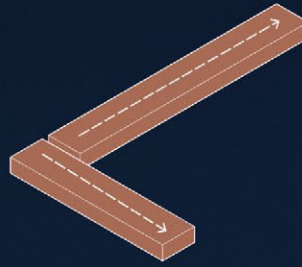
Date Spring 2023
Type Academic / 2nd Year Graduate Studio Project
Instructor George Proctor

Nestled in the vibrant heart of Santa Ana, this multi-family, mixed-use housing project stands adjacent to the Santa Ana train station within a proposed, transit-oriented master plan for the city. Its purpose is to cater to the burgeoning artist community in the vicinity while providing a space where commuters and residents alike can converge and immerse themselves in a creative atmosphere.

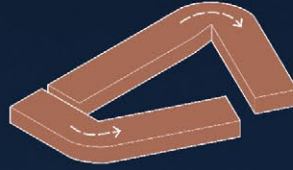
The exterior facade of the project harmoniously integrates with the surrounding architecture, employing colors and materials that reflect the existing context. Rich hues of red and soft yellow, coupled with a textured wooden louver system, establish visual connections to the train station across the street while asserting a distinct aesthetic identity. The louver system not only provides sun protection for the living spaces but also ensures privacy for the residents, shielding their homes from prying eyes. Additionally, at night, the louver system transforms into a luminous lantern, emanating gentle light from within the apartments.



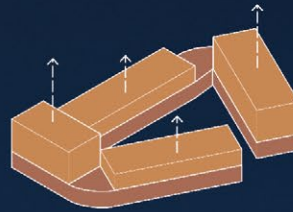
"L"
Rectangular Forms



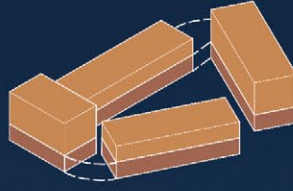
Curve
Bend



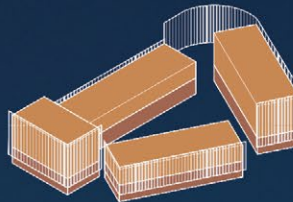
Grow
Extrude



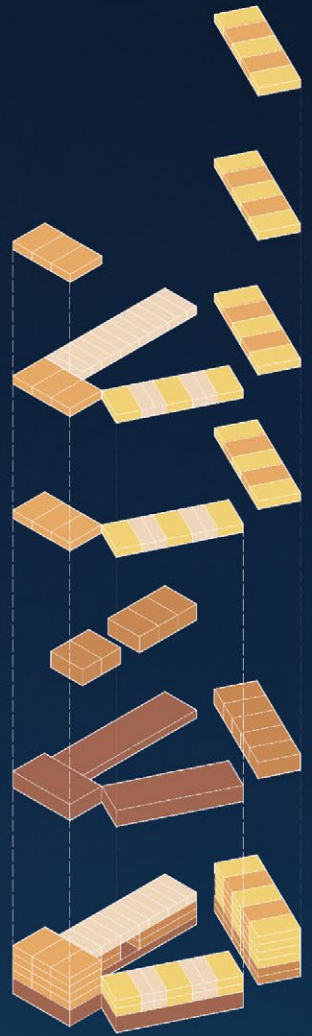
Bite
Subtract



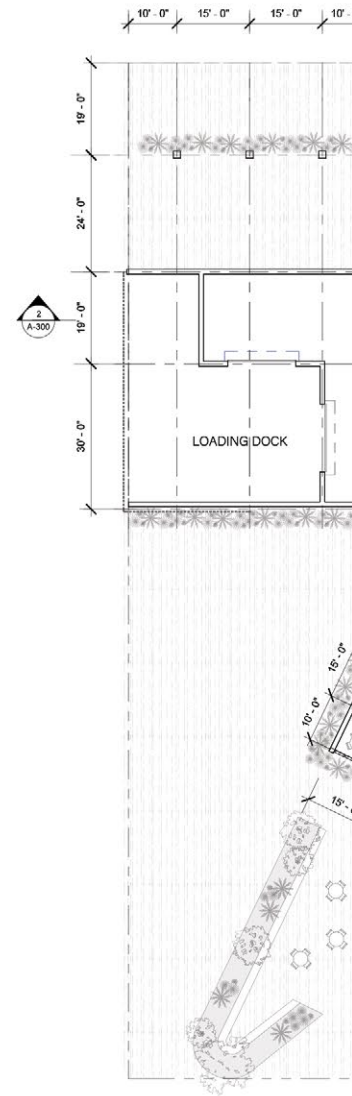
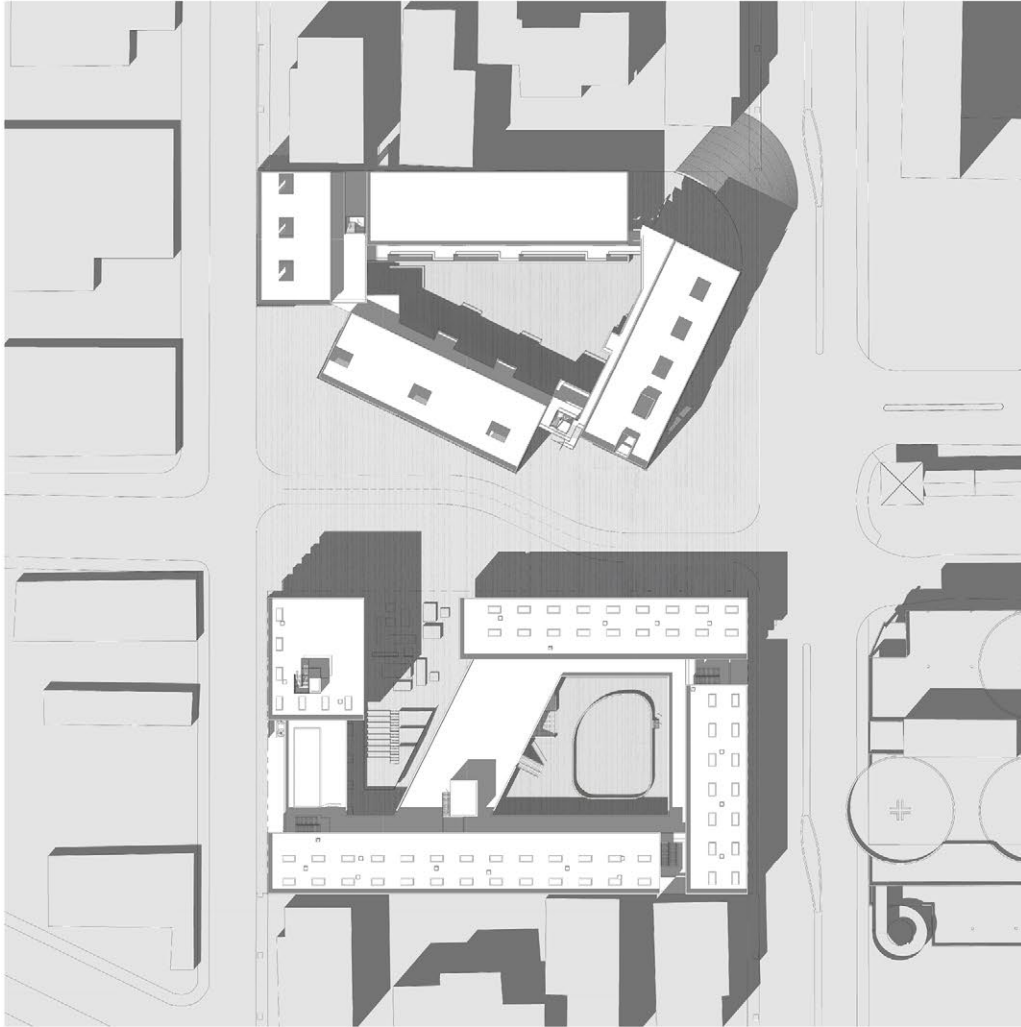
Wrap
Add Facade



Program
Exploded

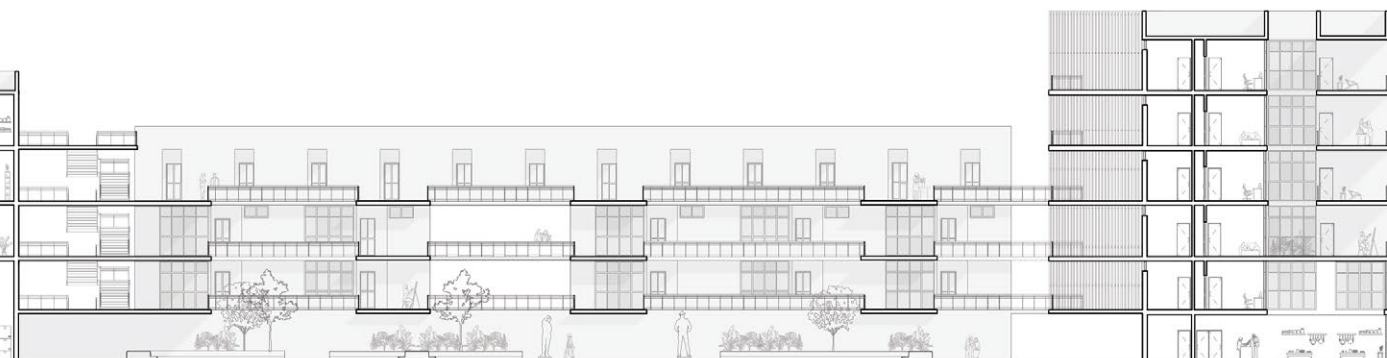
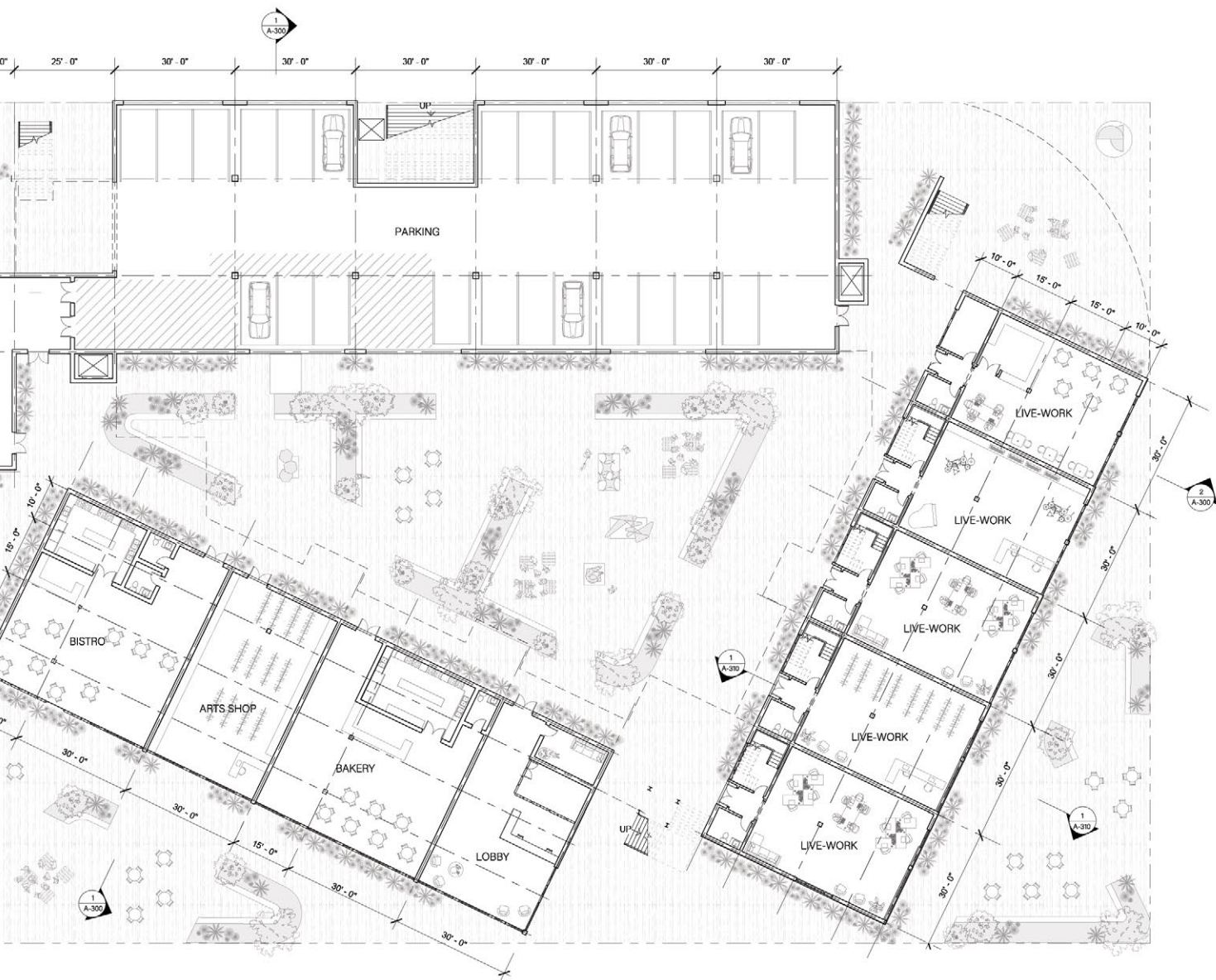


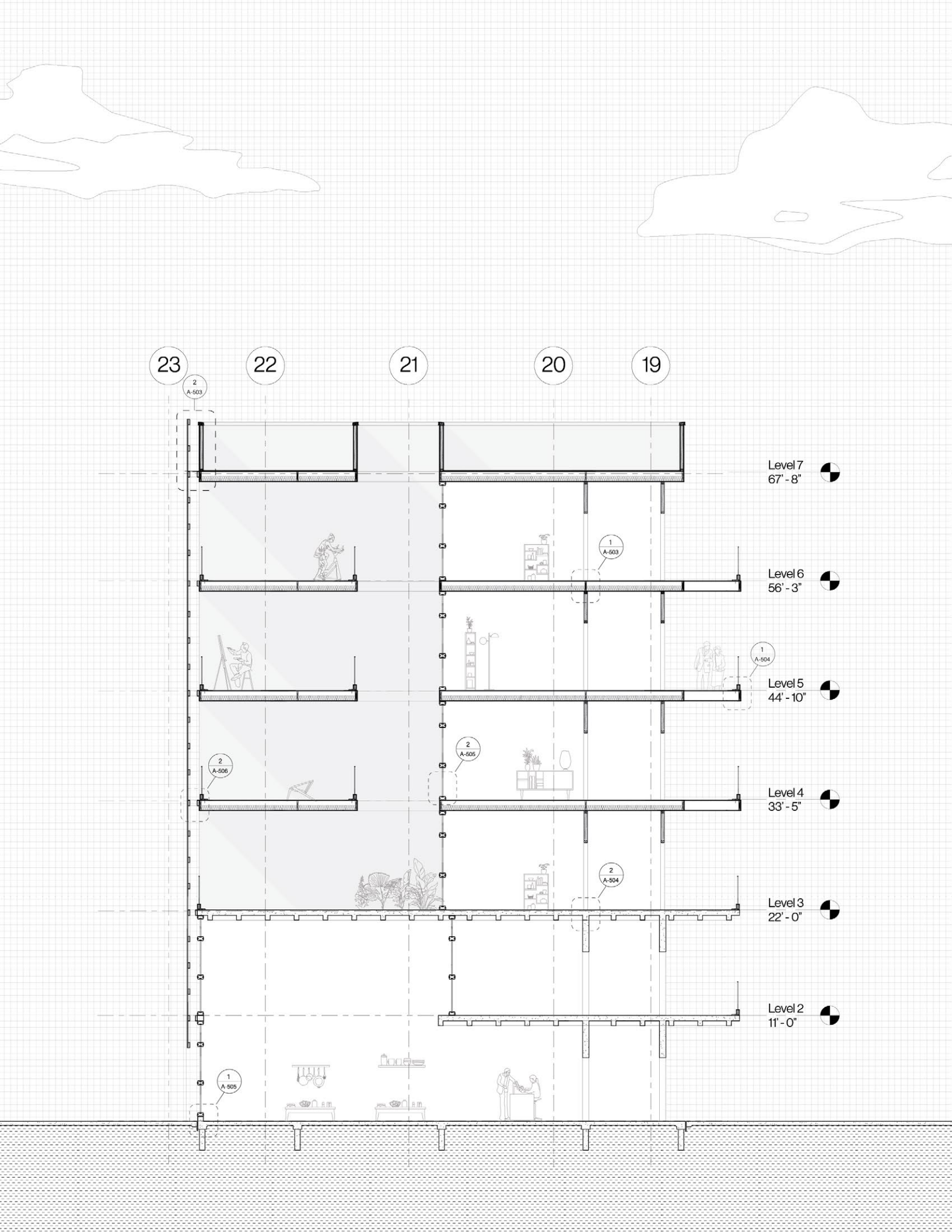
- Axonometric Key**
- Commercial
 - Live Work
 - 2 Bedroom
 - 1 Bedroom
 - Studio



At a grand scale, the building's form wraps around, forming a curved shape that gently guides pedestrians toward the central promenade. Along this lively thoroughfare, commercial spaces and live-work units face the communal area, fashioning a retail space that empowers artists to showcase their work, exchange ideas, and engage with one another. In harmony with its sister project across the promenade, these two designs communicate, with architectural features accentuating the significance of their counterparts, such as art galleries, lobby spaces, entrances, and storefronts.







23

22

21

20

19

2
A-503

Level 7
67' - 8"



Level 6
56' - 3"



Level 5
44' - 10"



Level 4
33' - 5"



Level 3
22' - 0"



Level 2
11' - 0"



1
A-503

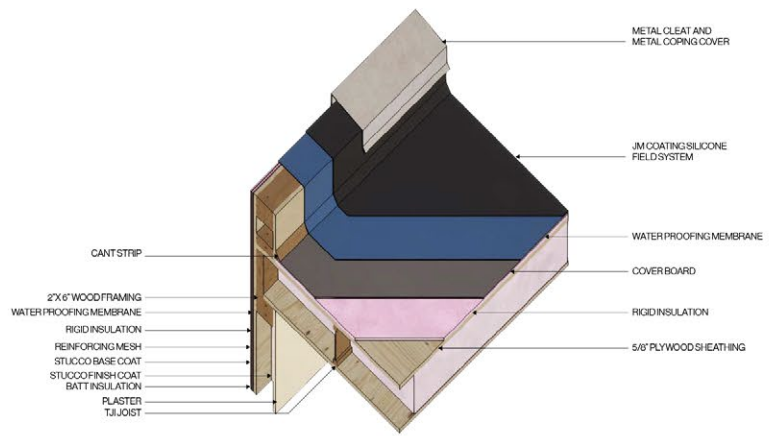
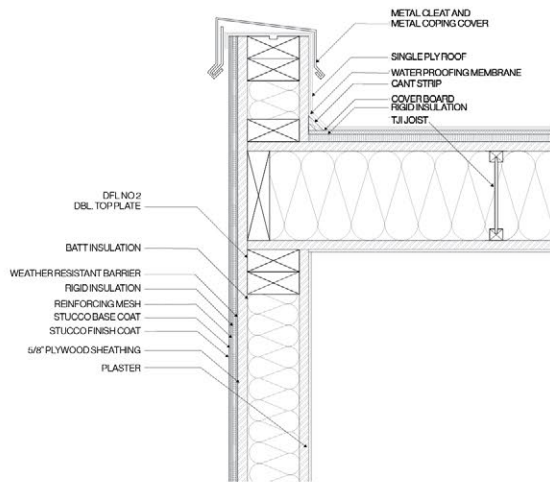
1
A-504

2
A-506

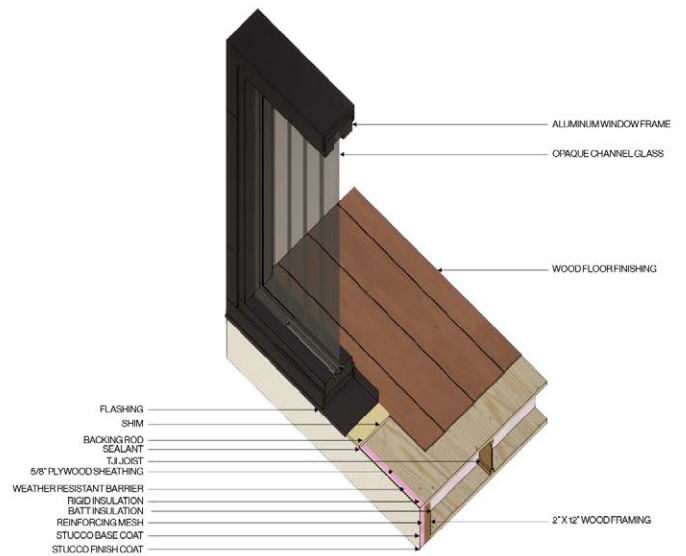
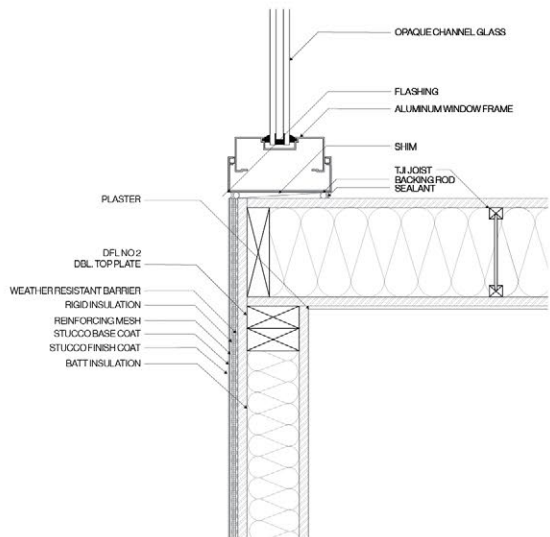
2
A-506

2
A-504

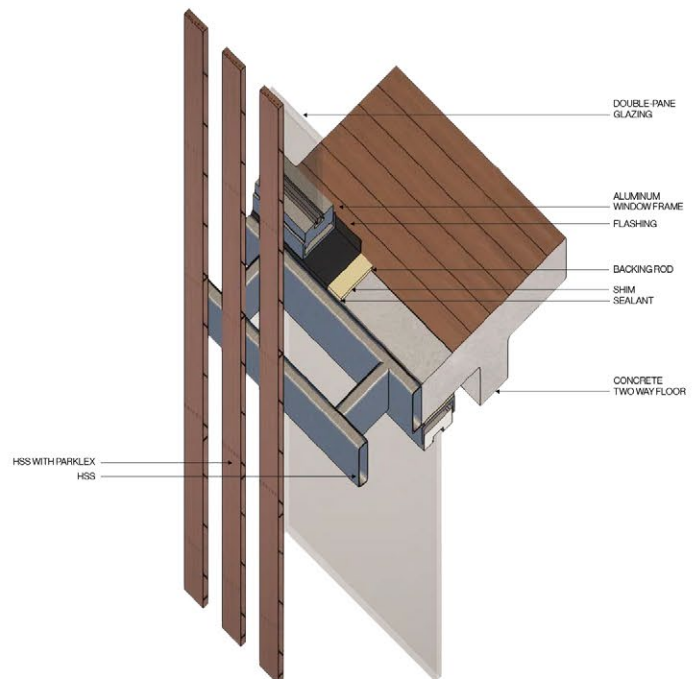
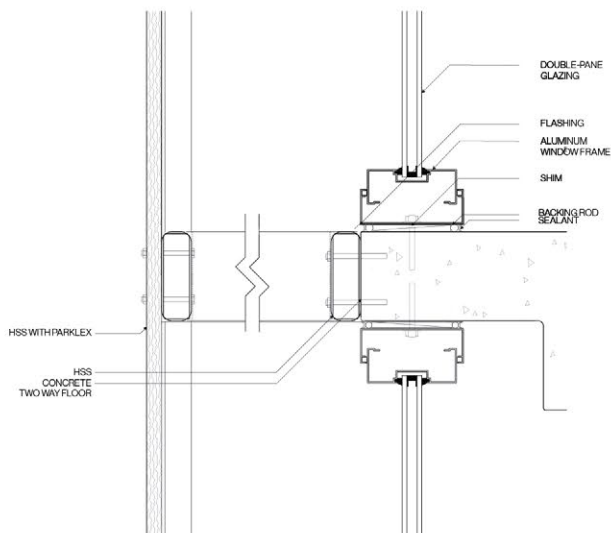
1
A-505



Wall Meets Roof



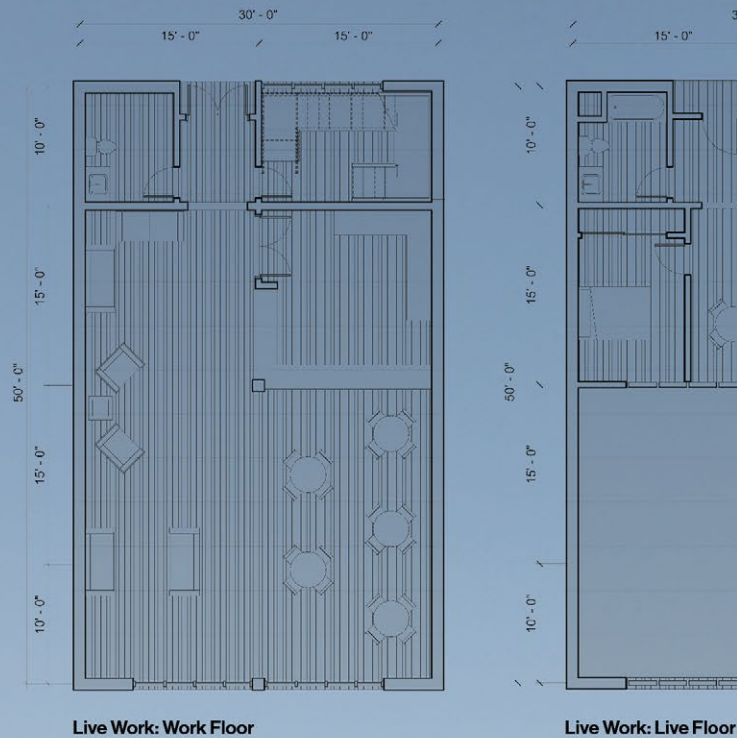
Channel Glass Window

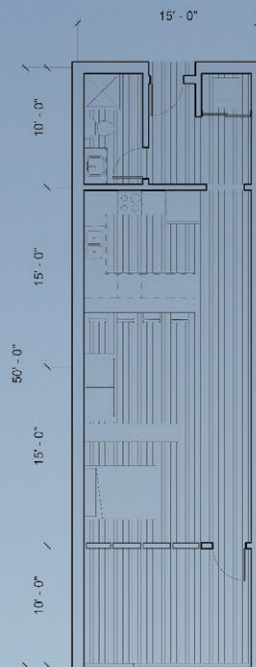
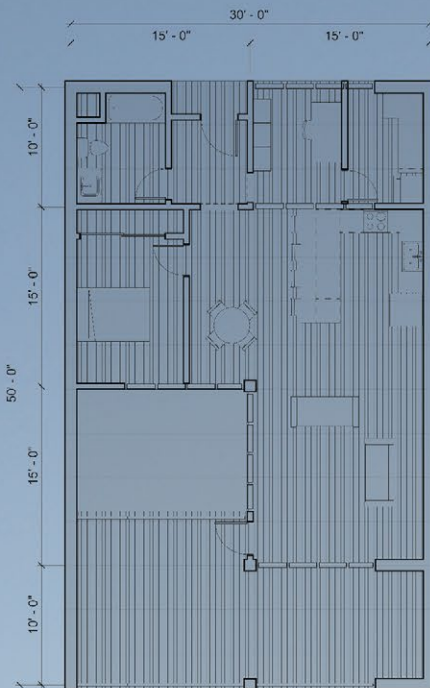
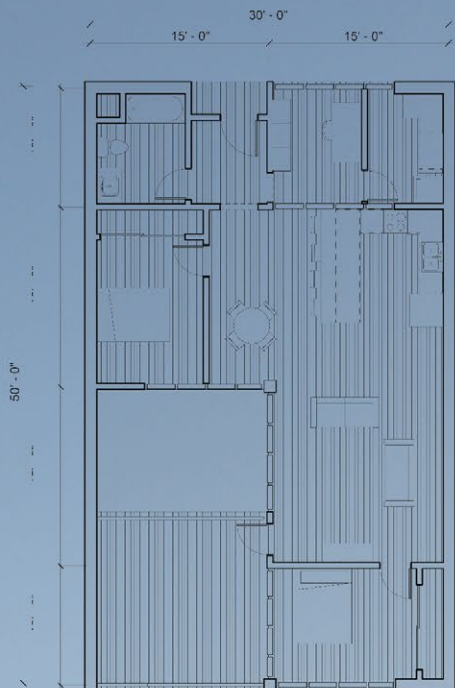
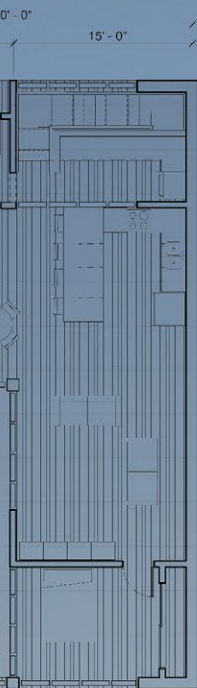


Louver System

Regardless of whether it's a studio, work-live unit, one-bedroom, or two-bedroom apartment, each space is meticulously designed to prioritize creativity and privacy. Notably, the units feature expansive deck spaces that transcend the traditional porch concept. These versatile outdoor areas are intended to accommodate various activities, from extending one's creative workspace to serving as a sleeping porch, or a place for social gatherings. Despite their openness to the outside, the louver system enveloping these decks ensures a layer of seclusion for residents.

From the podium level brimming with commercial spaces to the individual units on the upper floors, every facet of this project is imbued with a spirit of creativity. Each space is crafted with the artist in mind, resulting in a housing development that not only celebrates creativity but also nurtures its artist residents, with the aspiration of extending this enriching experience to the surrounding community.





Two-Bedroom

One-Bedroom

Studio



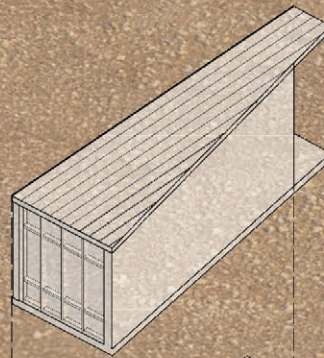
Cantilever

Date Fall 2022
Type Academic / 2nd Year Graduate Studio Project
Instructor Roberto Sheinberg

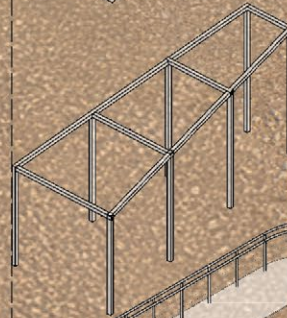
The Cantilever project stands as the culminating assignment in a trilogy of design challenges, comprising of the tower, bridge, and finally, the cantilever. Beyond merely testing our creative prowess, this series of assignments aimed to stretch our problem-solving abilities, especially in the realm of structural considerations. Progressing in complexity, the cantilever emerged as the ultimate test, compelling us to think innovatively in both design and structural aspects.



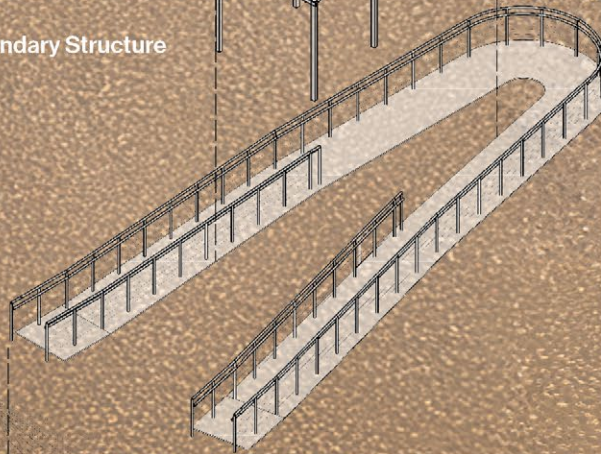
Enclosure



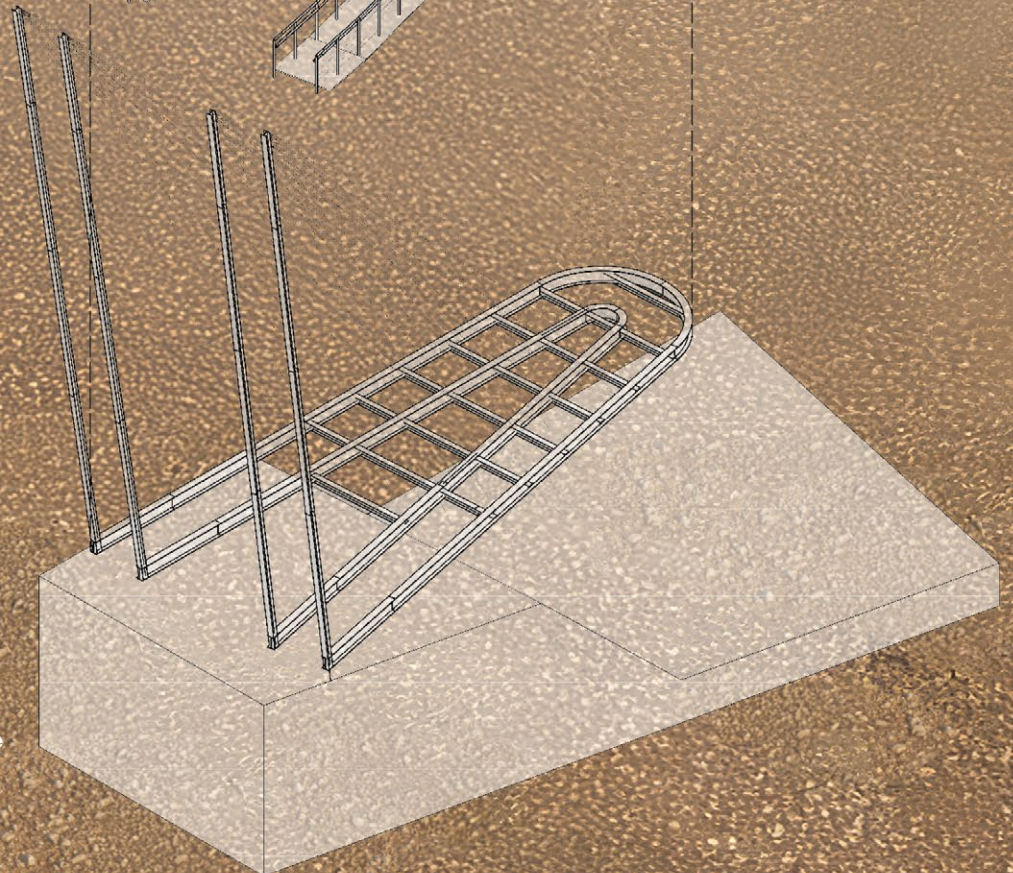
Secondary Structure



Pathway



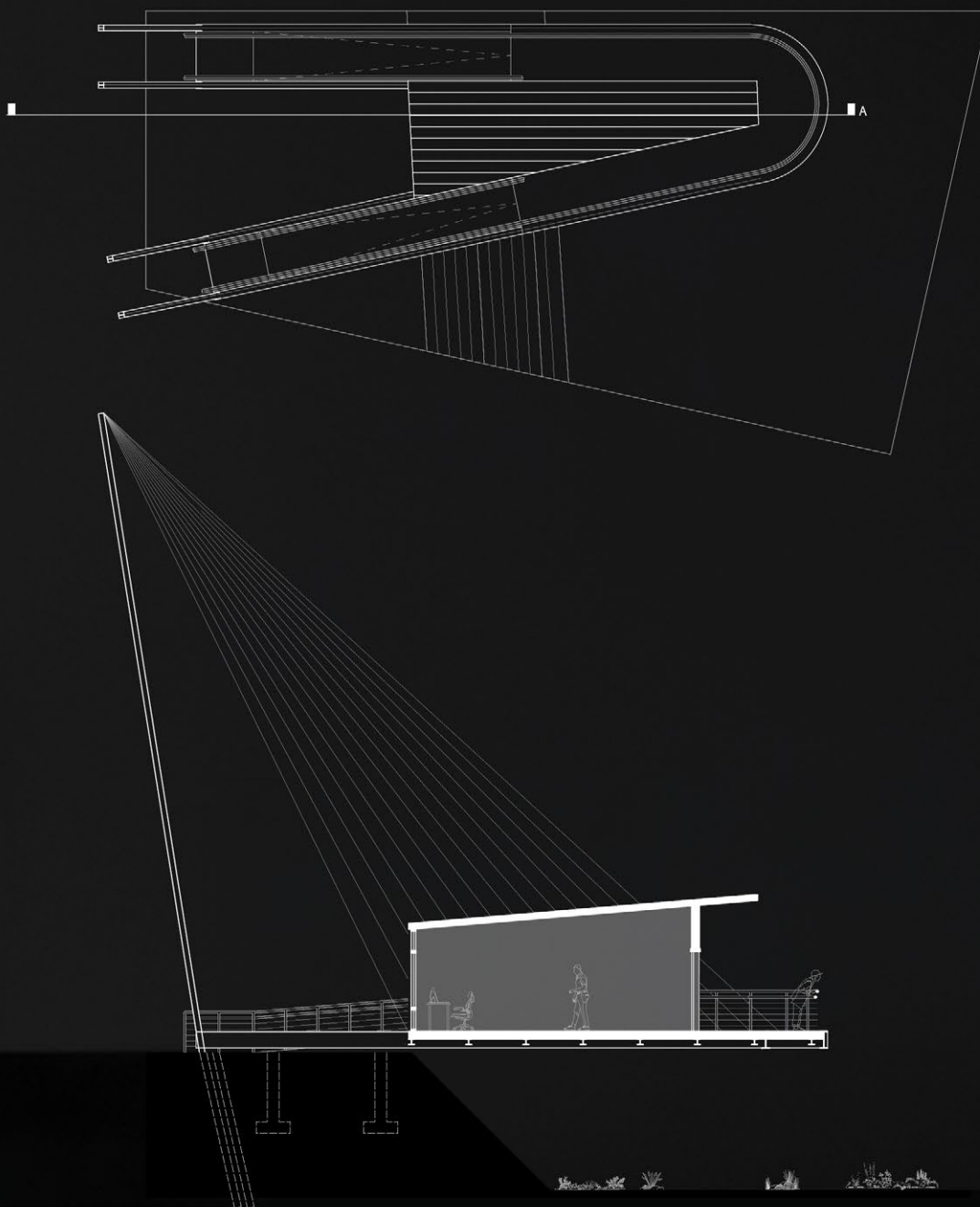
Primary Structure





Perched on the edge of a dried-up ravine, the cantilever project incorporates two primary programming elements: the work studio, a dedicated space for environmental scientists to immerse themselves in their work, and the lookout, a pathway strategically designed to capture the breathtaking scenic views.

Approaching the cantilever, one encounters two imposing structural towers, integral to supporting the cantilever itself. Ascending the ramp, the visitor gradually unveils the expansive ravine, peering over its precipice. It is only after diverting attention from these captivating views that the entrance to the studio space becomes apparent.

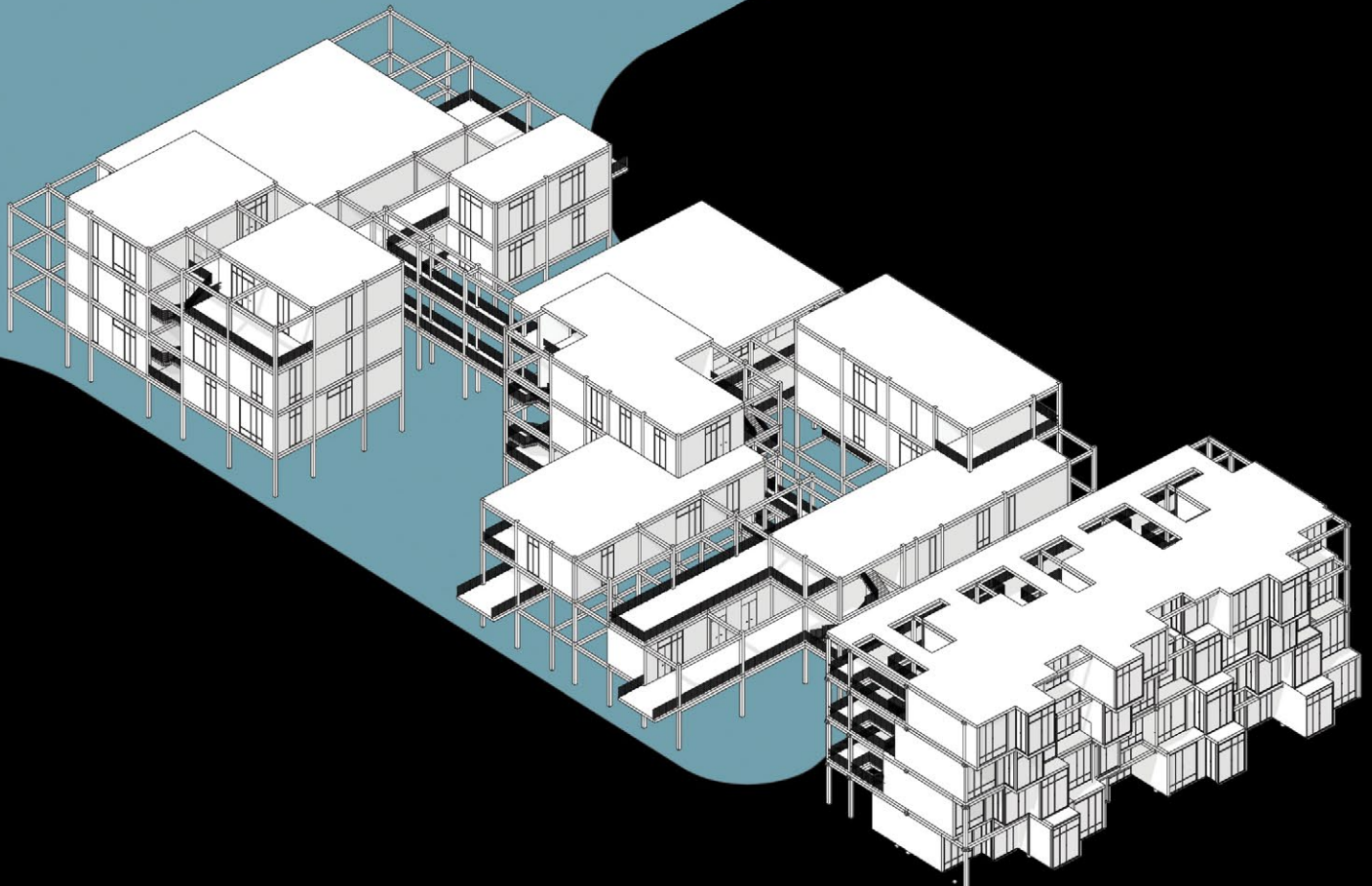


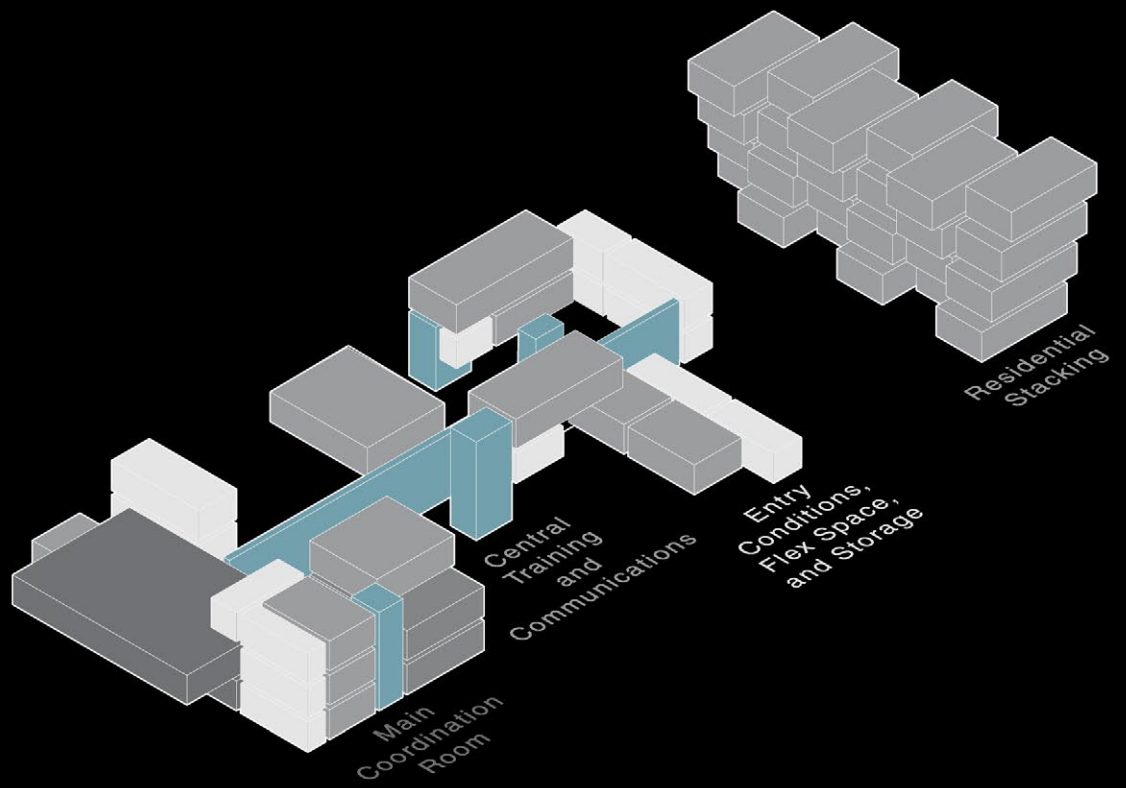
The Jungle Gym

Date	Fall 2023
Type	Academic / 3rd Year Graduate Studio Project
Instructor	Axel Schmitzberge
Collaborators	Jonathan Cortez Gavin Fitch Esteban Perez

Focusing on precast concrete, this proposed Emergency Operations Center (EOC) in Honolulu, Hawaii, serves as a vital hub for first responders and a refuge for citizens during emergencies. Positioned adjacent to a small stream flowing through the city, the project diverts the flow of water beneath the structure, creating a moat-like effect. Elevated on a series of corbel columns, the building hovers over the water, evoking a sense of security while benefiting from a natural cooling effect.

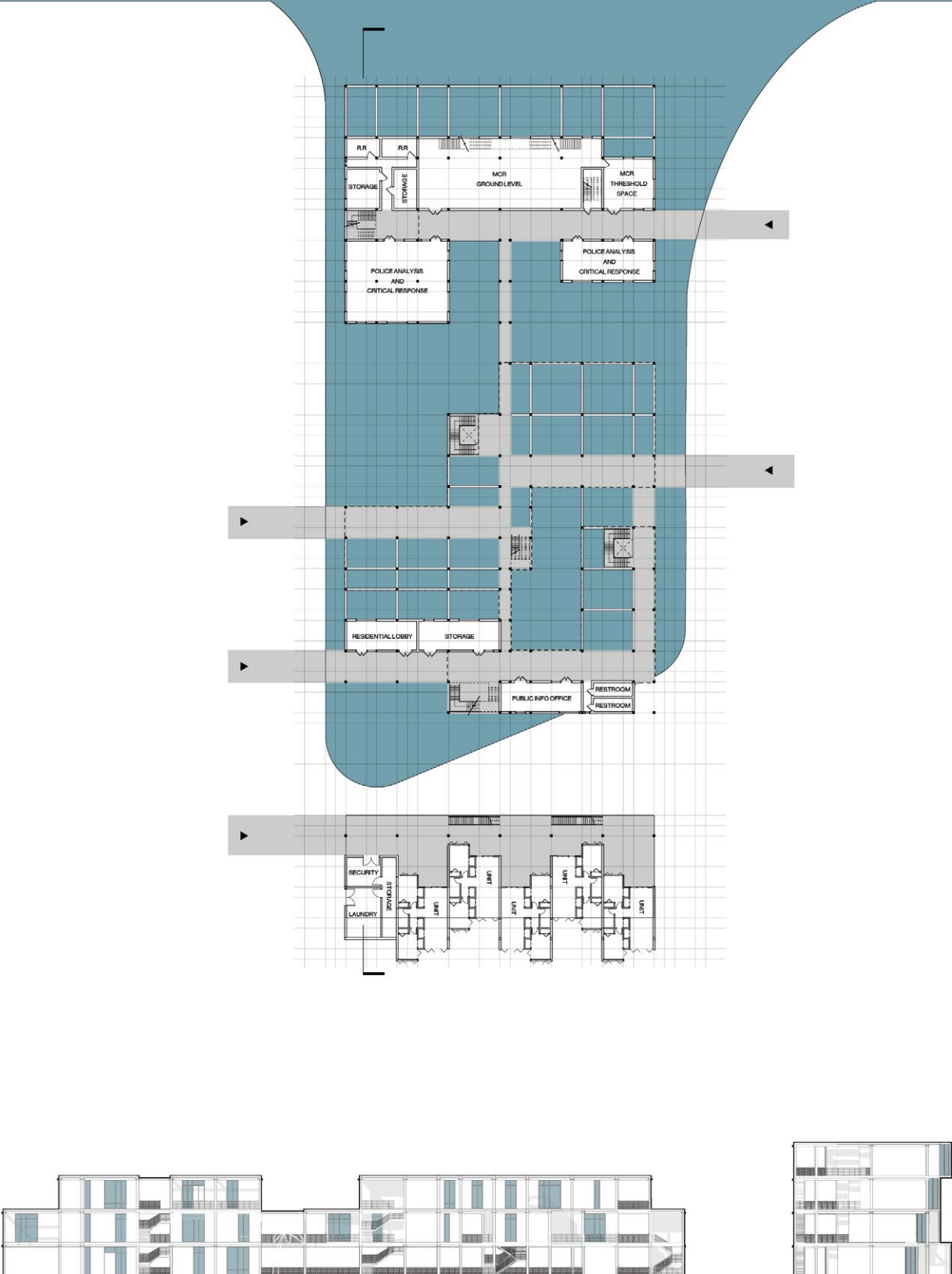
The corbel columns, combined with concrete beams and floor plates, lend the structure a distinctive, jungle-gym-like appearance; an easily recognizable design ideal for a facility that may need to serve as a beacon of safety in times of crisis.





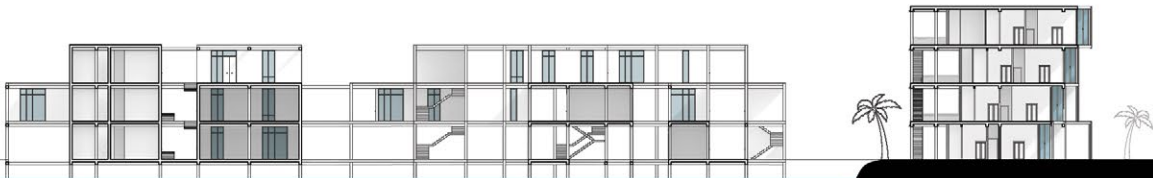
The facility's programming includes essential spaces such as conference rooms, fire dispatch, and a master control room (MCR), ensuring it is fully equipped to respond quickly and efficiently to natural disasters. Residential quarters are located

on solid ground, offering housing for facility workers and displaced citizens. All programmatic elements are organized along a central spine, optimizing circulation and reducing travel distances within the facility.



Leveraging a modular design, the project is constructed with a minimal set of components that can be easily reconfigured to create a variety of spaces. Certain areas are intentionally left incomplete, with exposed columns and beams, allowing

for future growth and expansion as the facility's needs evolve over time. Access to the site is highly controlled, with limited pathways to maintain privacy and security in high-priority areas.

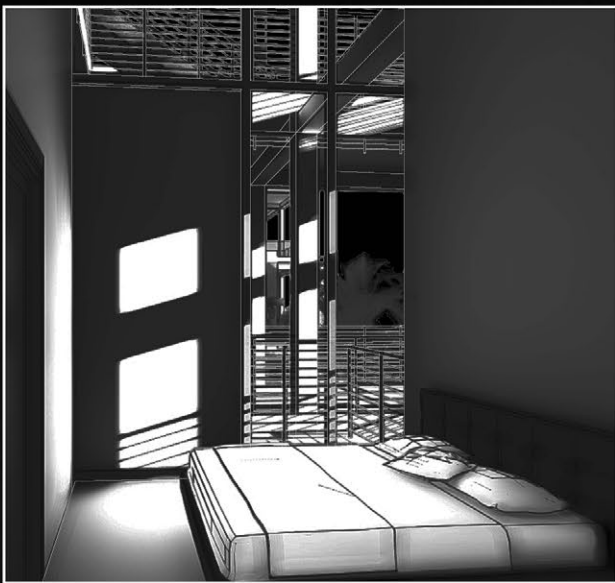




Walkway



Residential Walkway



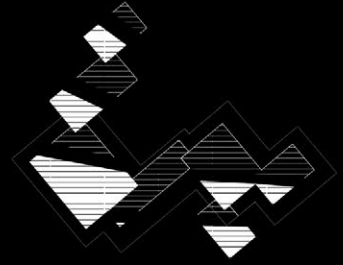
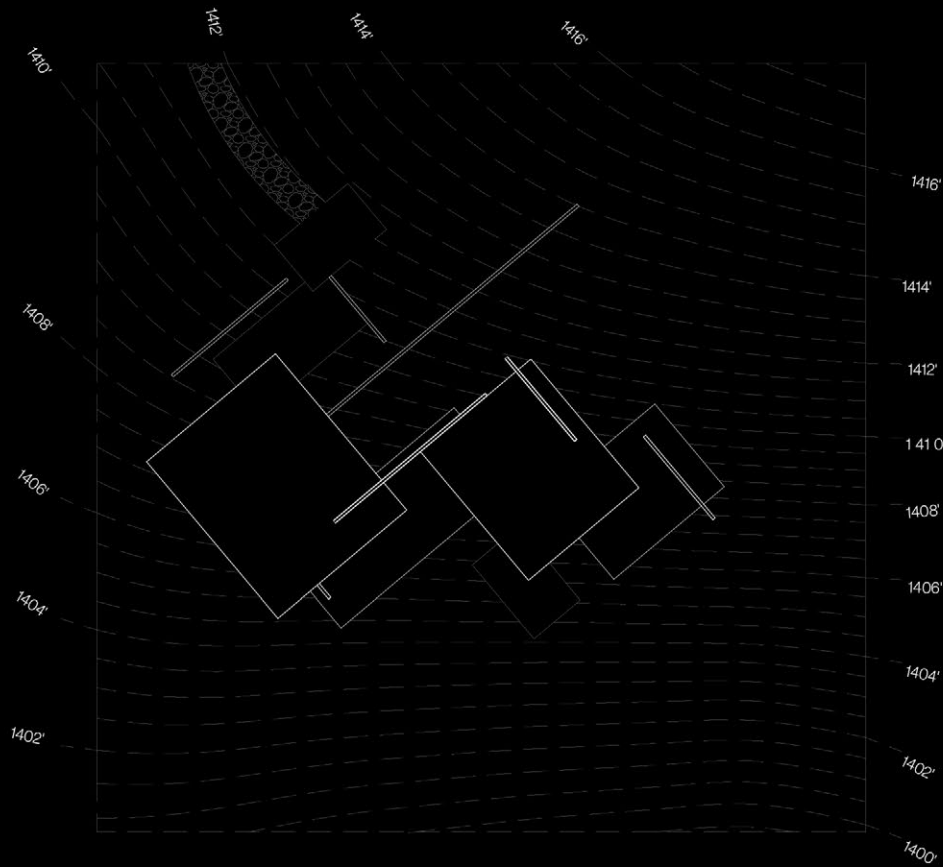
Residential Room



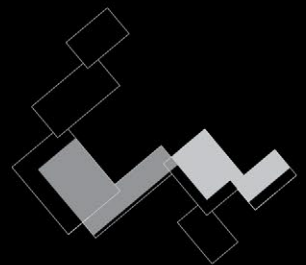
Hillside Retreat

Date
Type
Instructor

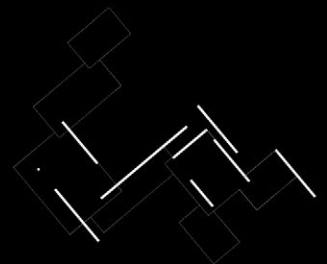
Spring 2021
Academic / 2nd Year Community Collage
Nadim Itani



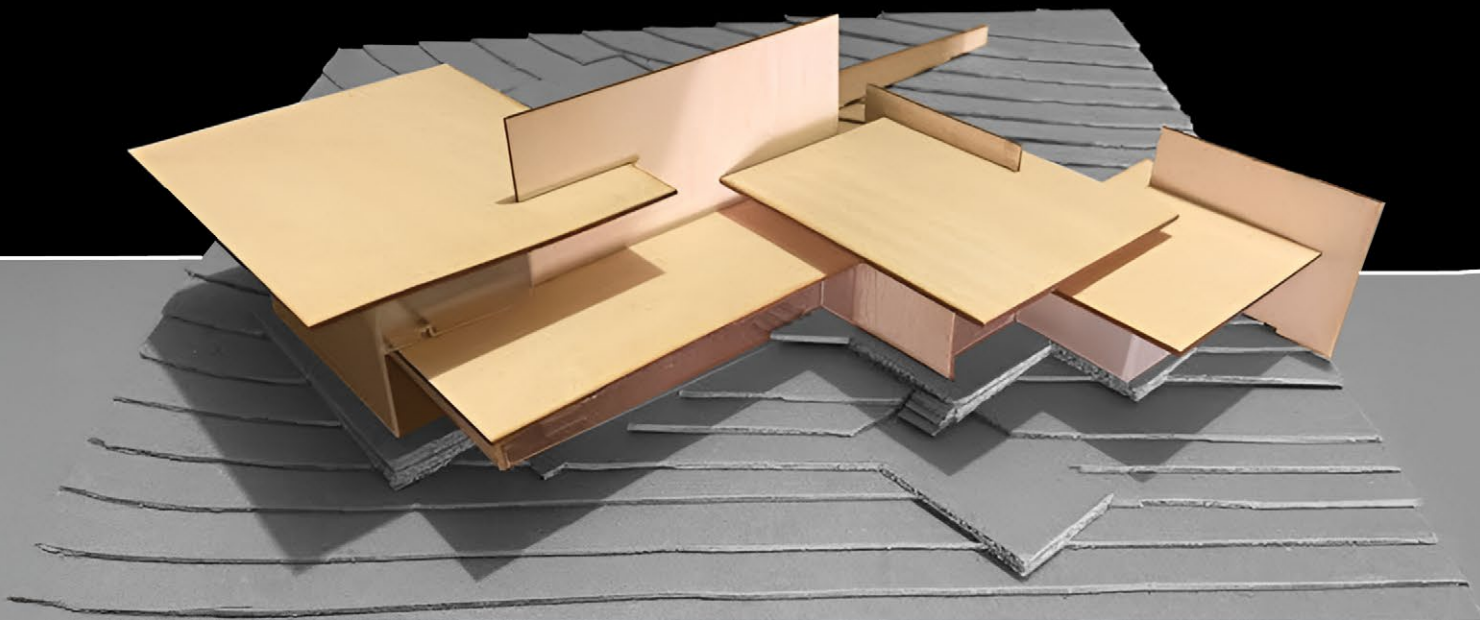
Out and Fill
Cut
Fill



Public and Private Enclosure
Private
Public

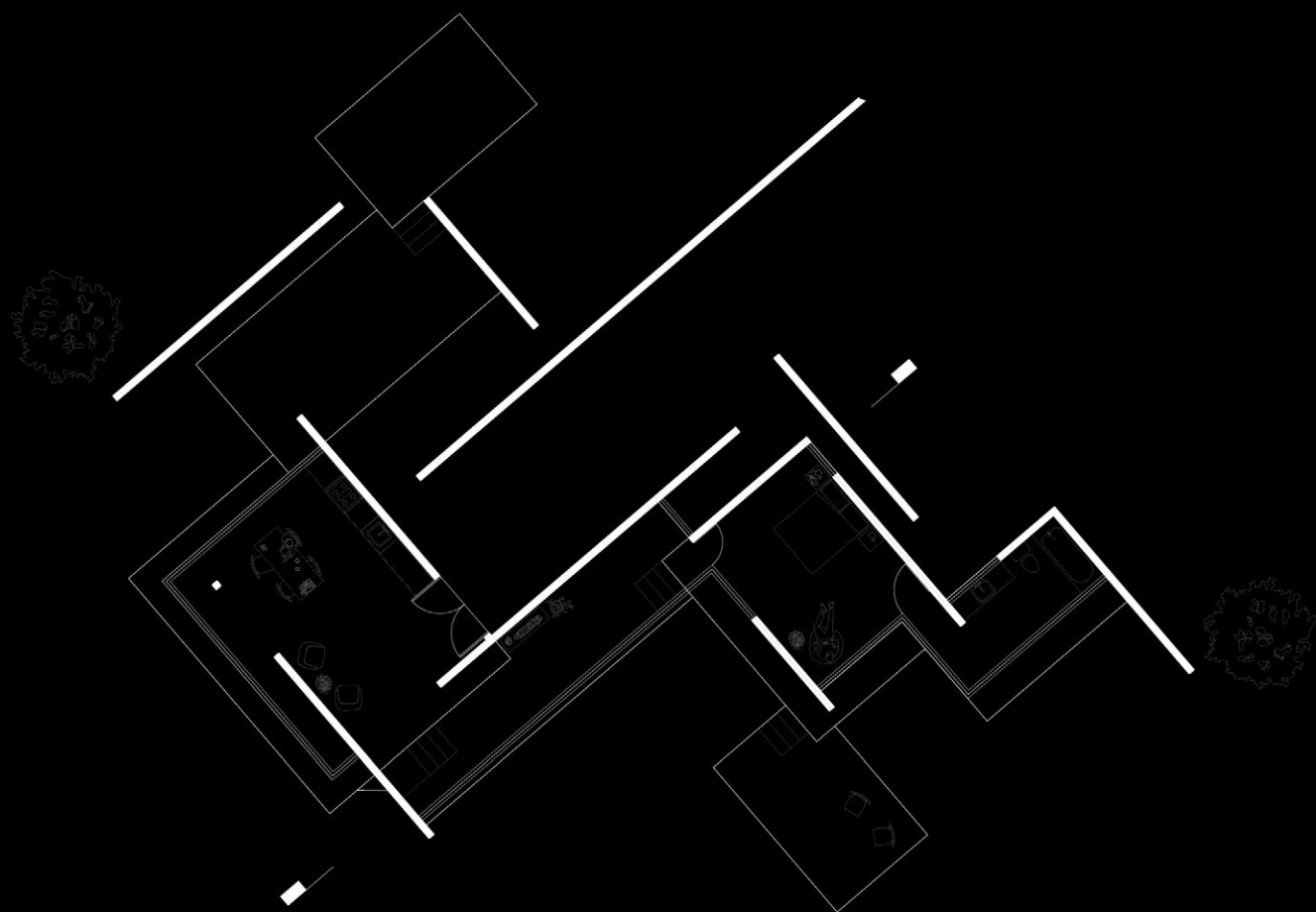


Structure



This project utilizes a restrained palette of volumes, planes, and points to craft a single-family residence that seamlessly merges indoor and outdoor spaces. Embracing both literal and phenomenal transparency, expansive glazed walls establish a strong connection between residents and the

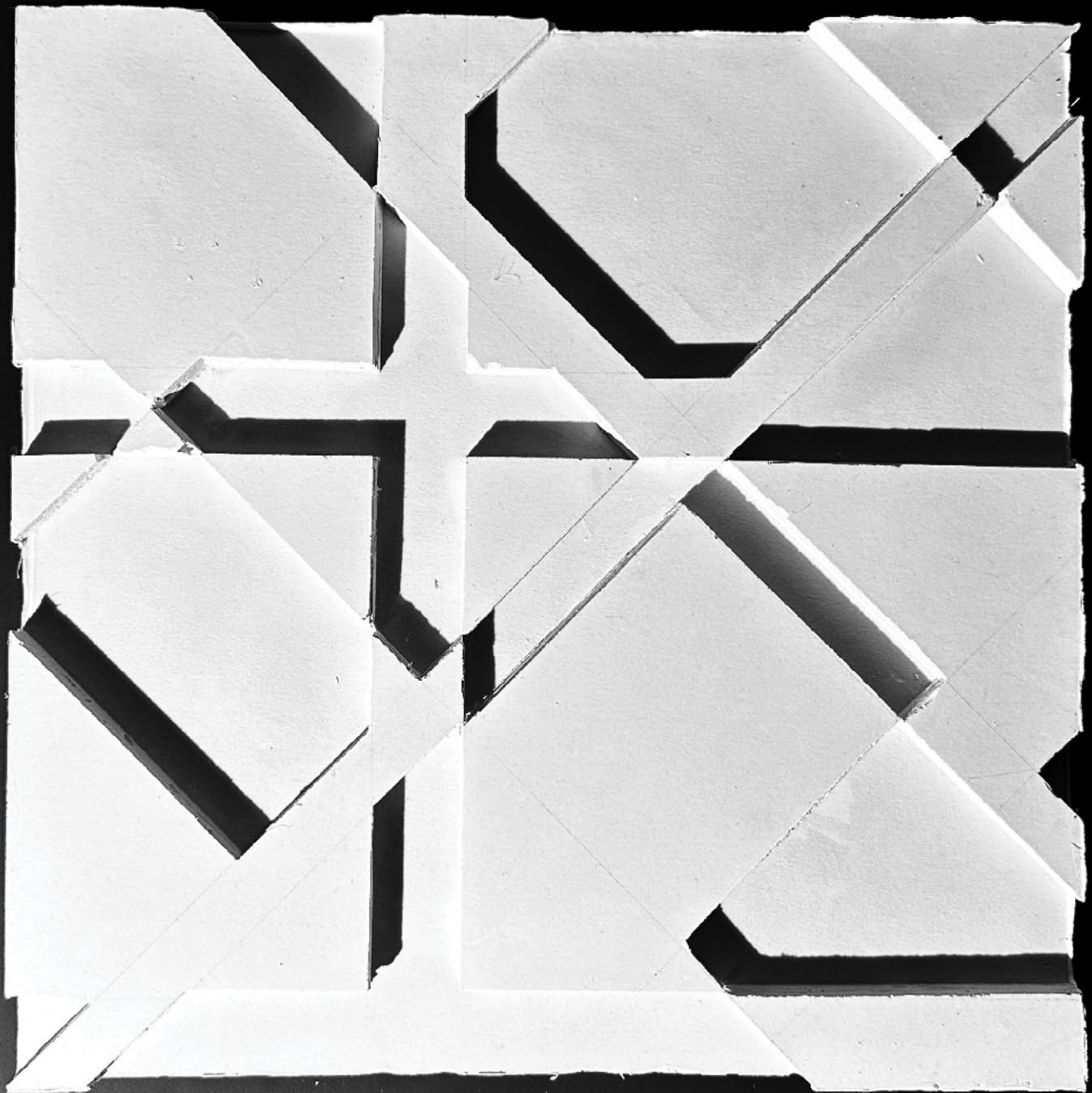
surrounding landscape, while large planes stack, conceal, and reveal themselves from behind one another. Thoughtfully executed cuts and fills nestle the structure into the terrain, creating a cascading sequence of platforms that harmonize with the natural landscape.

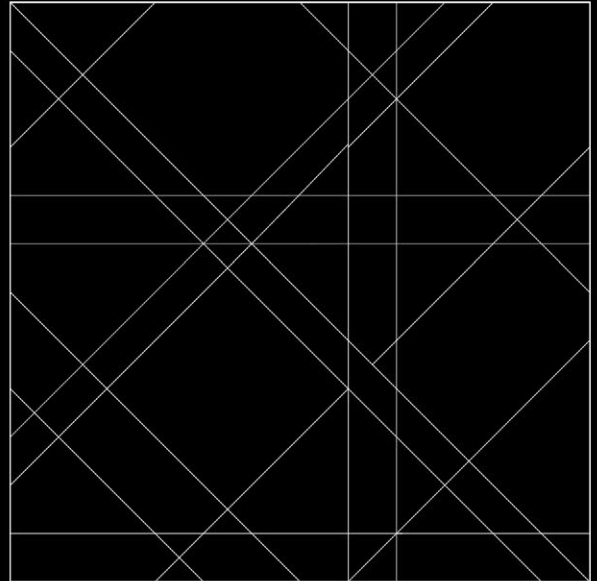


Bas-Relief

Date Spring 2022
Type Academic / 1st Year Graduate Studio Project
Instructor Alex Pang

This exercise, centered on the exploration of grids, delves into lines, forms, and the concept of phenomenal transparency. The resulting plaster sculpture plays with light and shadow, creating a dynamic interaction between shapes. As one form intersects with another, new shapes emerge, transforming the sculpture into something entirely fresh, yet subtly revealing that it was always present, waiting to be seen.





Line Drawing

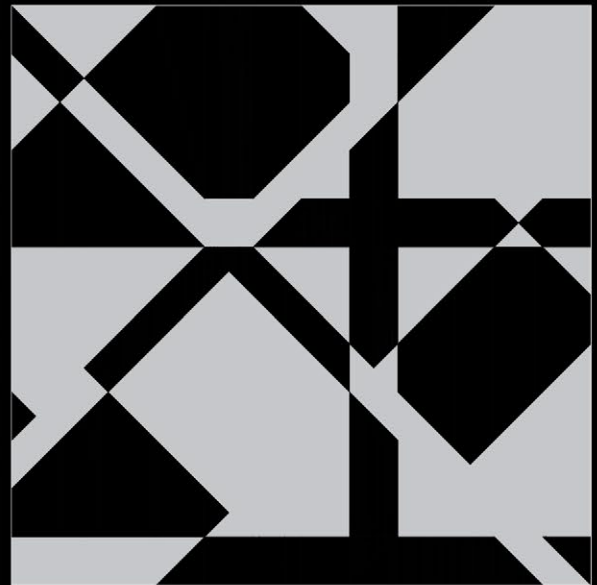
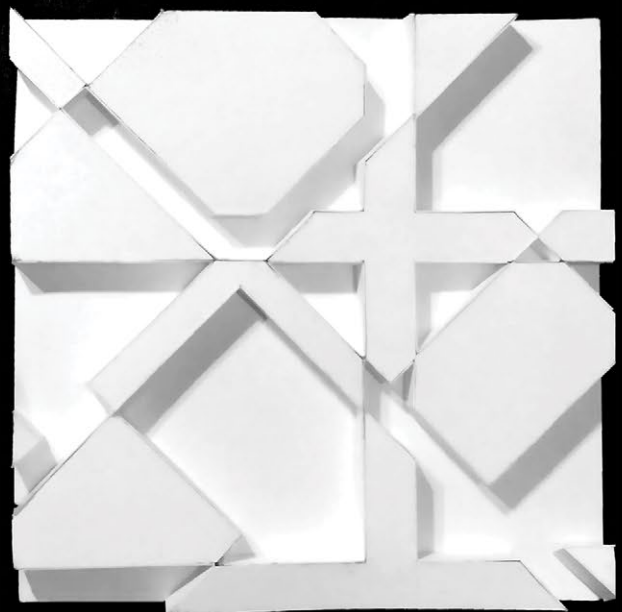


Figure Drawing



Mock Model

Collage Work

Through collage-making, I explore and experiment with color, texture, shape, transparency, narrative, and composition.

By cutting up magazines, old prints, and leftover modeling materials, I transform abstract ideas and emotions into tangible, visual forms. These abstract representations invite exploration and creativity. With no strict rules governing the composition, everyday objects and visuals are repurposed to convey more complex design concepts.



Ellsworth Kelly Wannabe

Captivated by the postcard collages of minimalist artist Ellsworth Kelly, this series of explorations seeks to unravel the brilliance embedded in his work. By emulating and reimagining his creations, I aim to grasp how he achieves such elegance and balance using minimalistic and simple materials.



She's a Woman

What began as a simple collection of red, orange, and yellow images gradually evolved into a narrative celebrating icons and symbols of strong, empowered women. From world leaders to fashion icons and illustrations, each embodies a distinct yet unmistakable energy of strength and resilience.



Last Look

Composed of intertwined strands from three distinct images, this collage seeks to capture the simultaneous expression of three different emotions. Each emotion holds its own space, shifting in intensity depending on the viewer's focus, mirroring the way we often navigate and balance complex feelings.

During the summer of 2023, it was impossible to escape the cultural phenomenon of Barbie. Both a film and an icon, Barbie embodies a blend of complex ideas surrounding feminism. This collage seeks to encapsulate a fragment of the Barbie-mania experience; vibrant pinks, empowerment, and the iconic greeting: "Hi, Barbie!"

