

architecture  
portfolio

selected  
works

2025

kyle daou

# contents



04 - 13

Belmar Triangle  
Student House



14 - 25

Transposed  
Topology



26 - 31

Los Angeles  
Chinese Massacre  
Memorial



32 - 38

Case Study House  
Modernist ADU





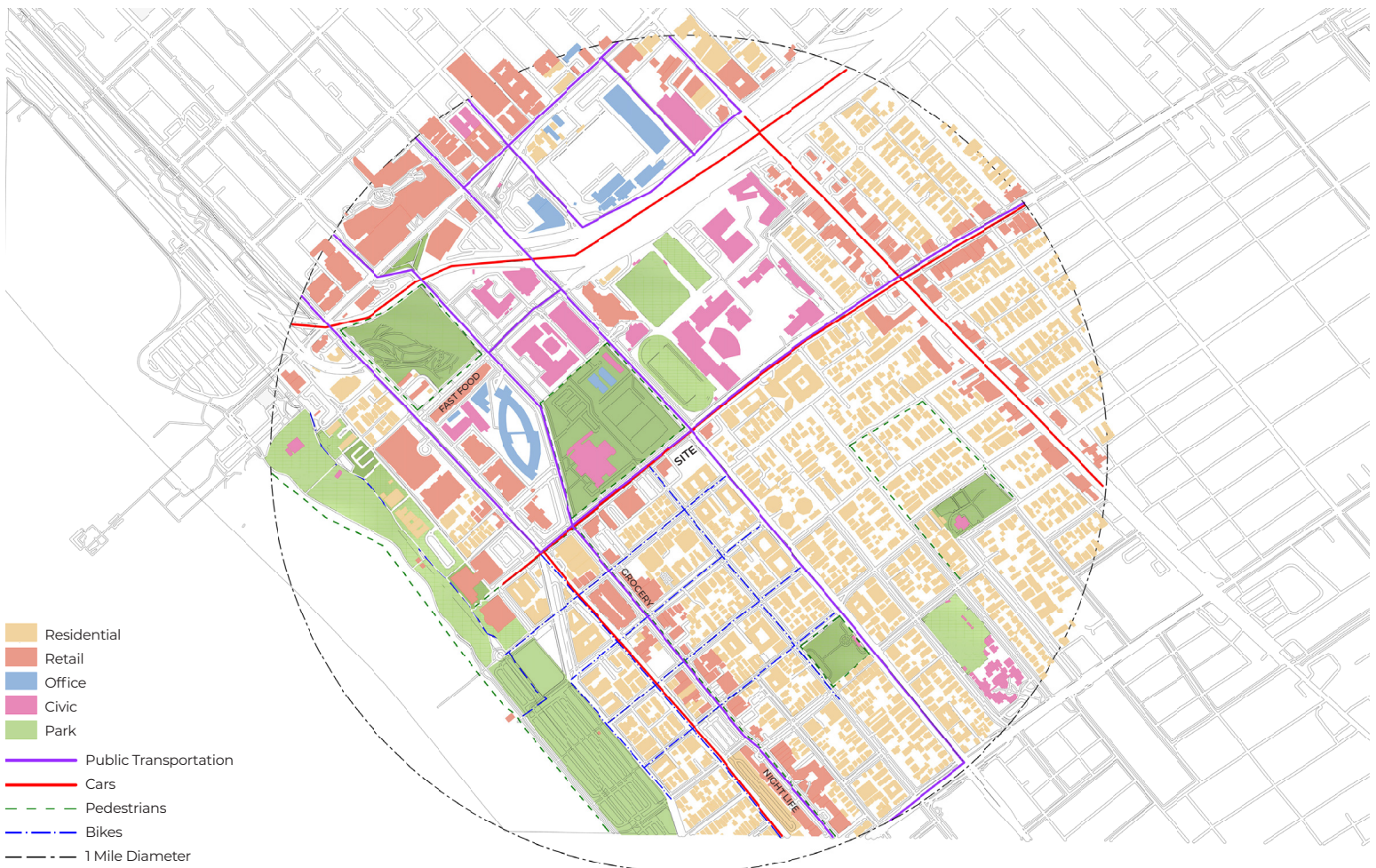
BELMAR TRIANGLE STUDENT HOUSING



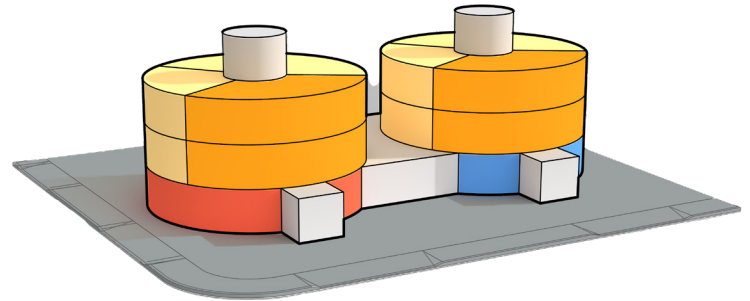
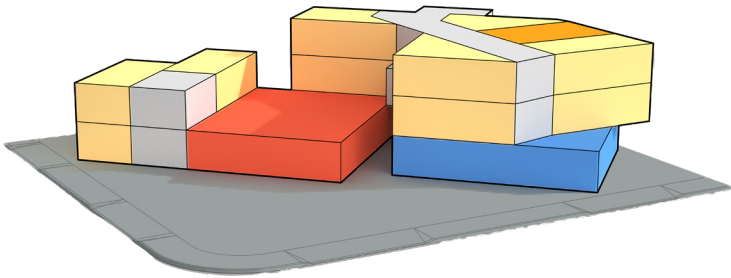
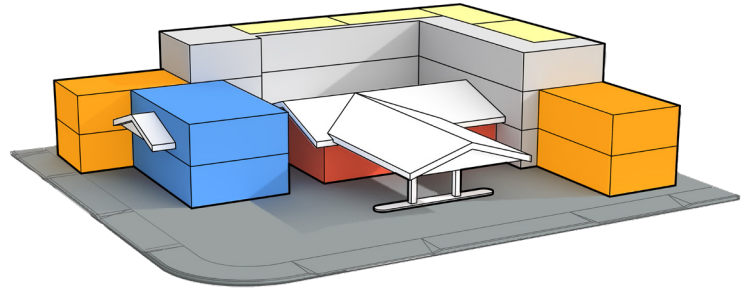
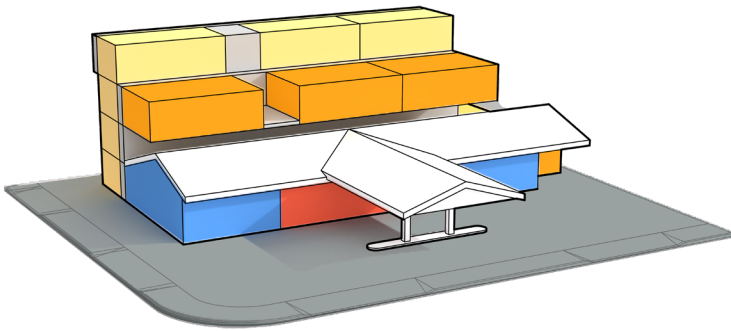


The Belmar Triangle was a thriving Black Community in Santa Monica between the early 1900s through the mid-1950s. During Eisenhower's presidency, he implemented the national "Build America Better" cleanup campaign. Through this campaign, the city of Santa Monica was able to categorize the many shotgun houses in the Belmar Triangle as blight and unsanitary. Santa Monica's solution was to burn down the entire Belmar Triangle, erasing one of America's most prosperous Black communities.

The Belmar Triangle today has been replaced by civic buildings, parks, and retail. Santa Monica's dark history put an emphasis on consumerism rather than on community. The Belmar Triangle Student Housing's initiative is to provide a small communal space for the residents of Santa Monica to gather. By completely removing the Arco gas station that currently sits on the project site, and replacing it with an inviting student housing complex, Santa Monica can slowly start to rebuild the once destroyed neighborhood, now flipping the script to prioritize community over consumerism. This complex contains twelve studio apartments, four one-bedroom apartments, a cafe, a Black Collegians office, roof top lounge areas, and plenty of social gathering spaces to encourage interaction and create a welcoming space for all walks of life.

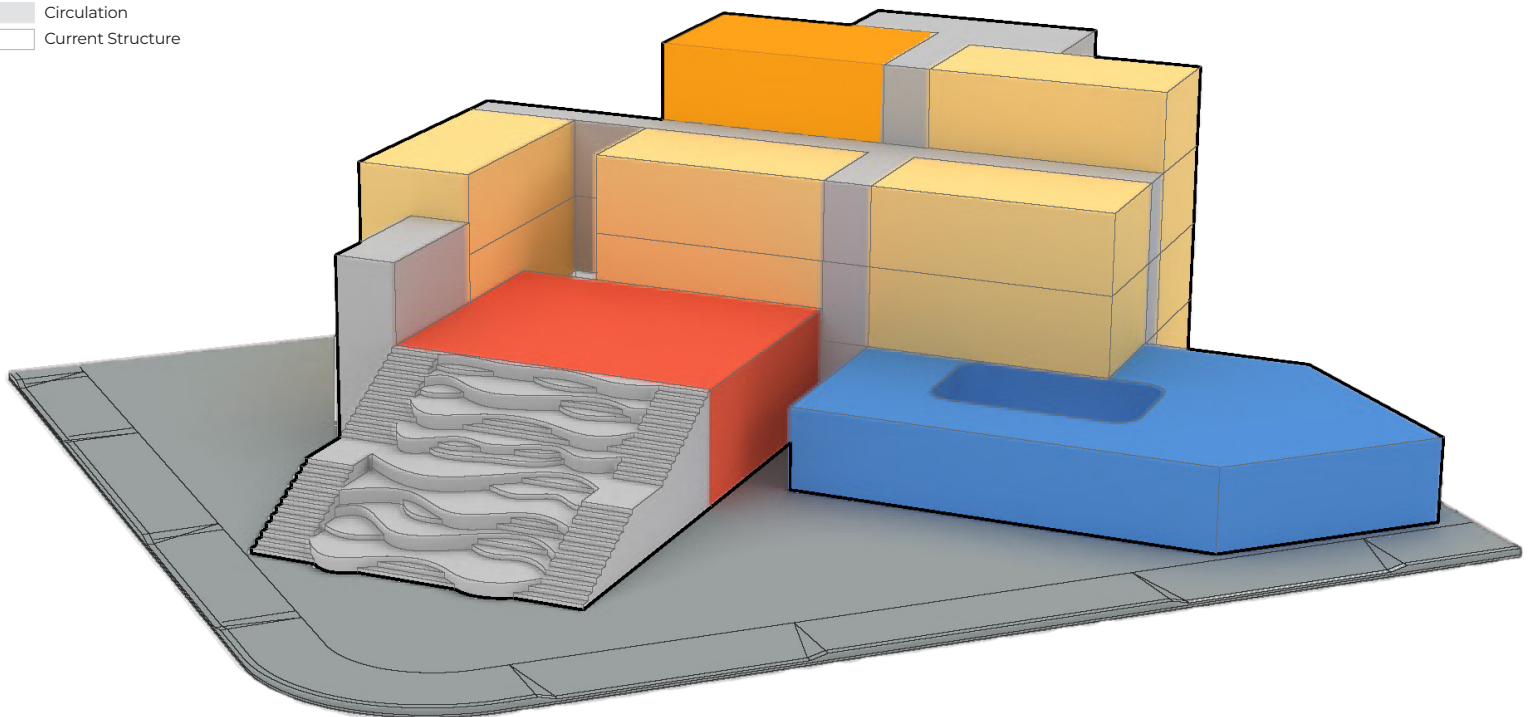






## INITIAL MASSING CONCEPT STUDIES

- Studio Apartments
- 1 Bedroom Apartments
- Student Service (Café)
- Black Collegians Office
- Circulation
- Current Structure



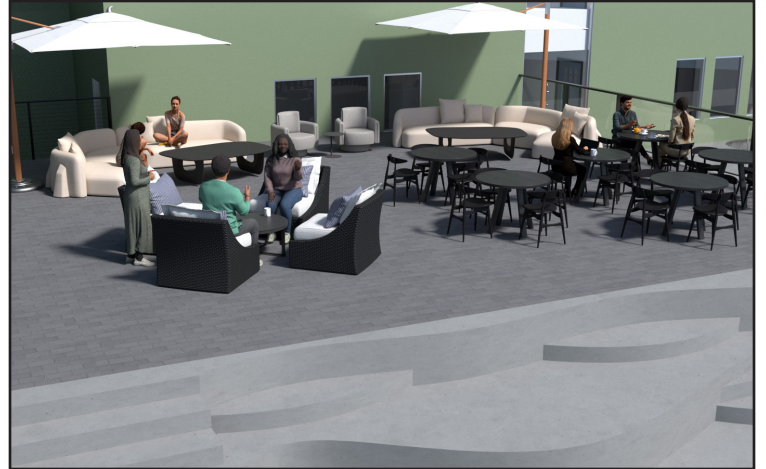
## FINALIZED MASSING











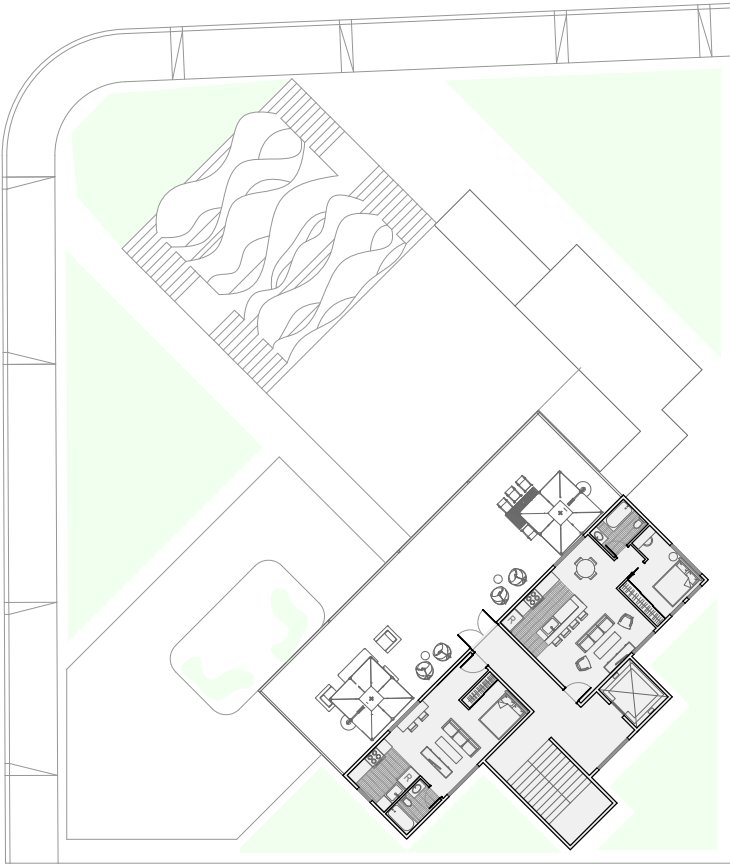




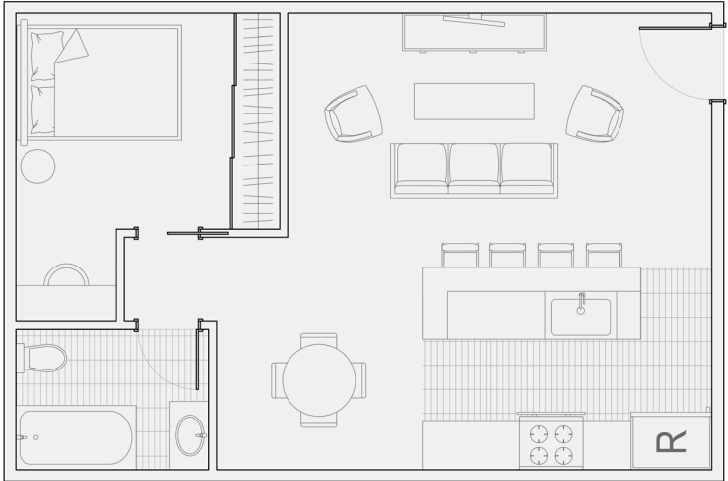
SECOND FLOOR SITE PLAN



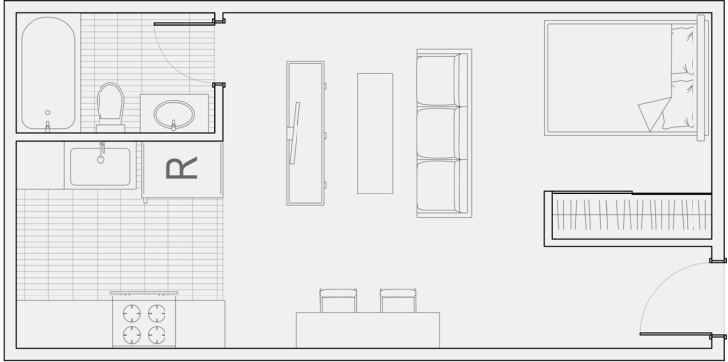
THIRD FLOOR SITE PLAN



FOURTH FLOOR SITE PLAN

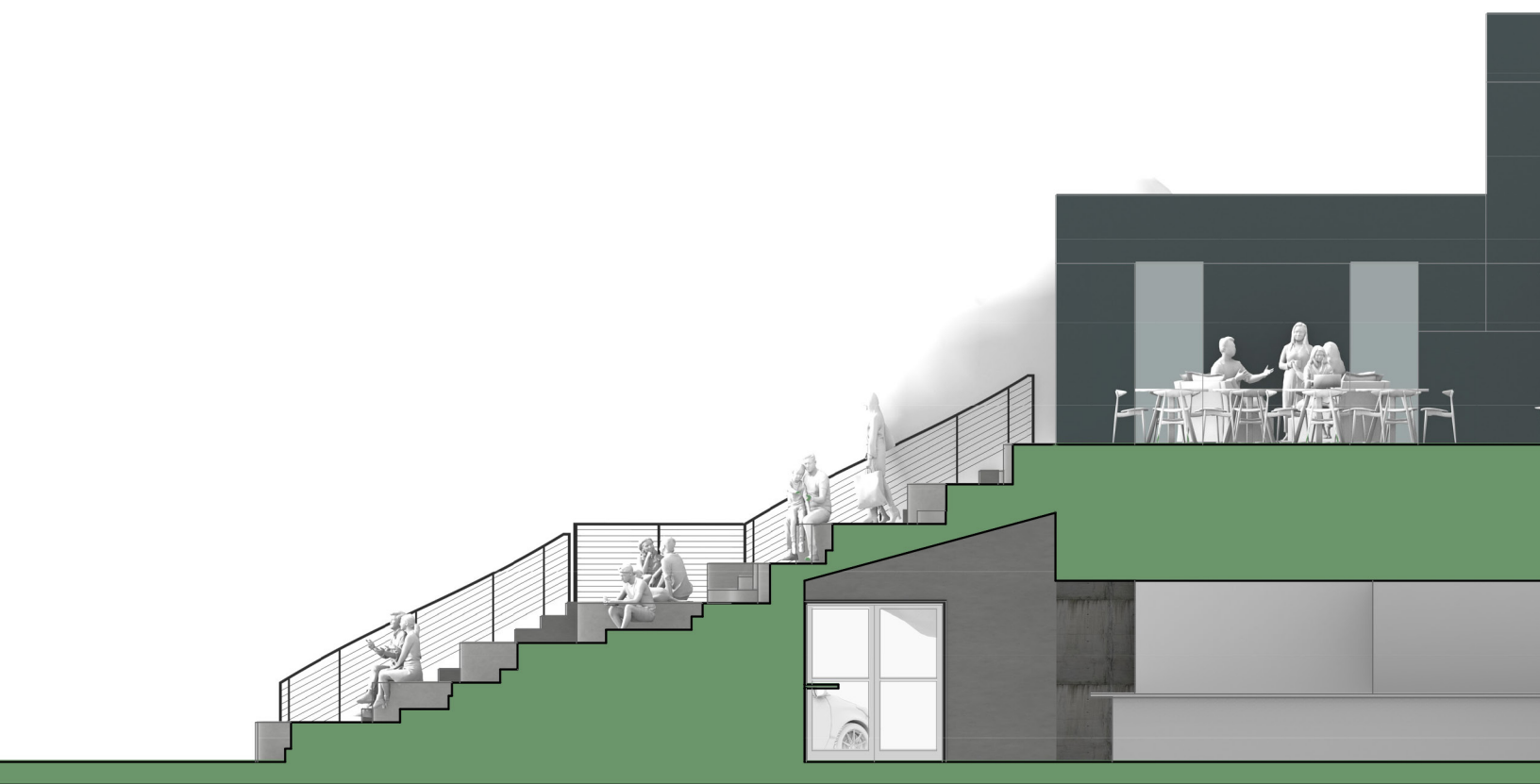


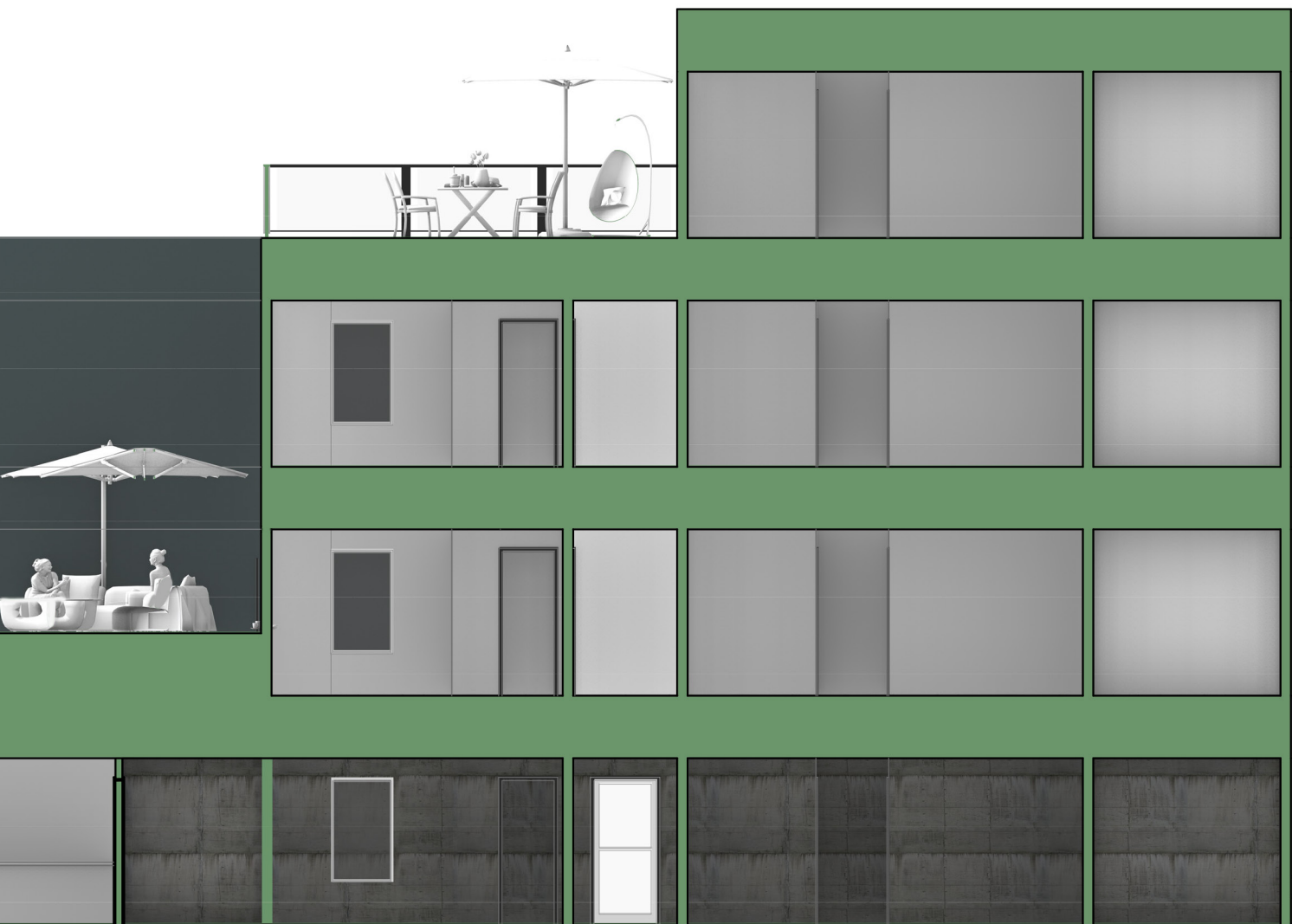
One Bedroom



Studio

UNIT PLANS

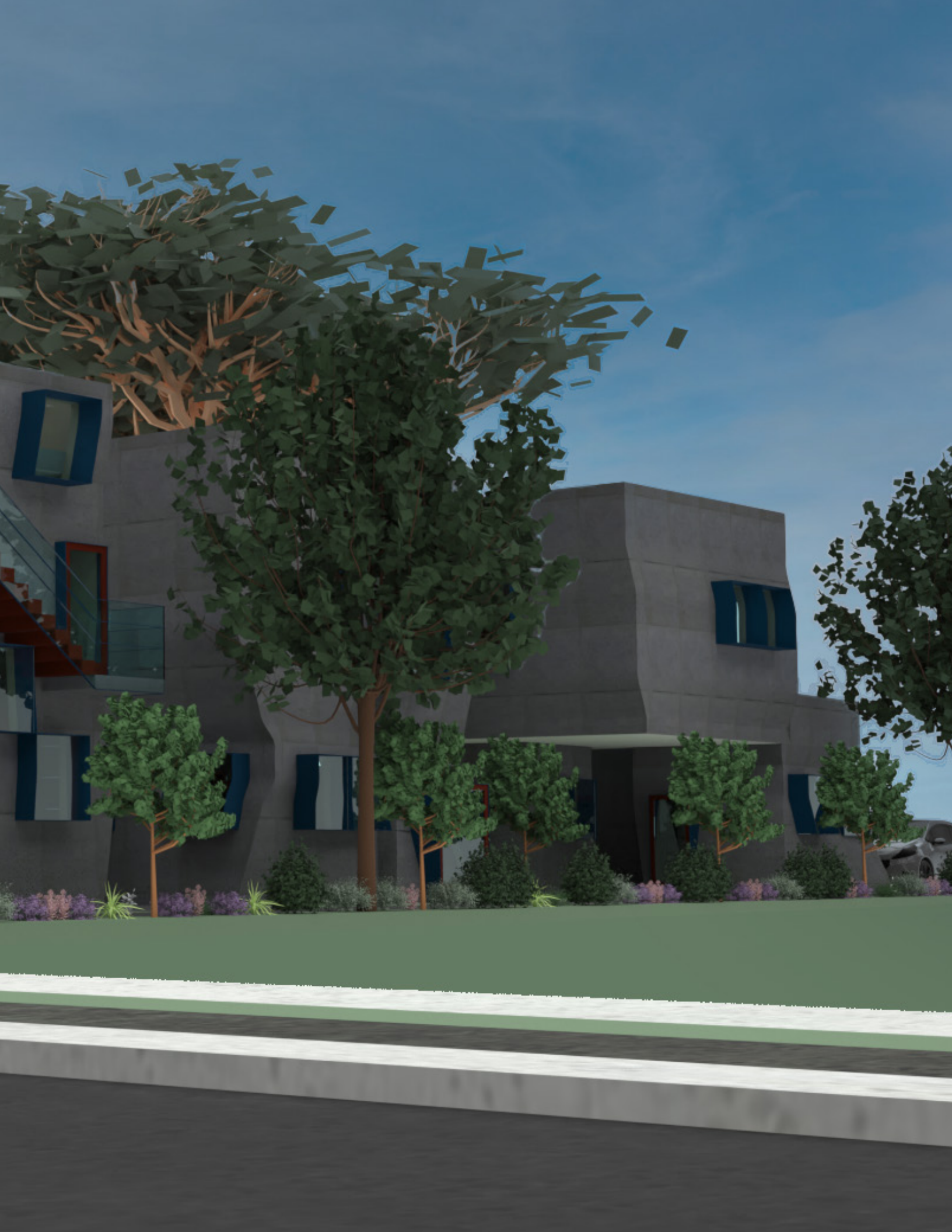








TRANSPPOSED TOPOLOGY





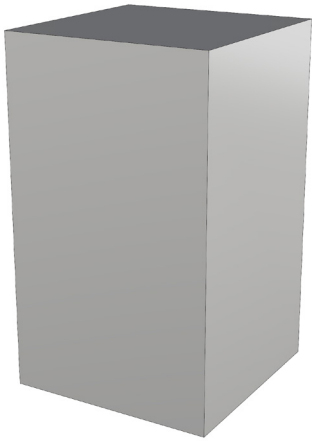
## 02

## TRANSPPOSED TOPOLOGY

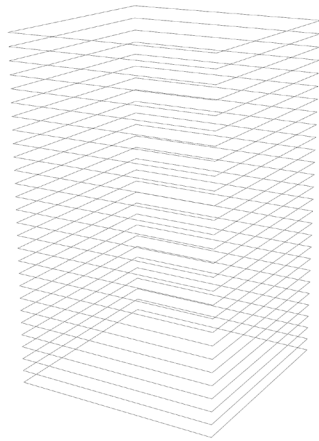
INSTRUCTOR: PATRICK GESKE  
STUDIO 3  
2024

Transposed Topology is an ADU Fourplex located at 1949 17th Street, Santa Monica, CA, with the intent to cater to extended families that want to live independently from one another, yet in close proximity. This complex is suited for, grandparents, young adults, and newly forming families.

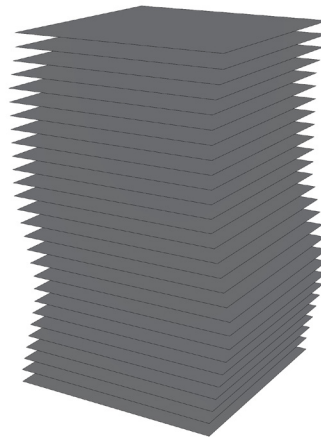
The design of the complex is inspired by the precedent study building, “The Vespertine” in Culver City, CA. I created an initial massing using the form of the cement cast seating from the precedent study building. By reconfiguring those massings, I came up with the designs of my ADUs. I then applied the same transformations to each ADU, through a series of pushes, pulls, and rotations.



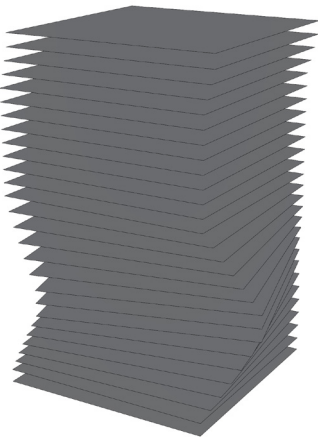
Rectangular Prism Massing



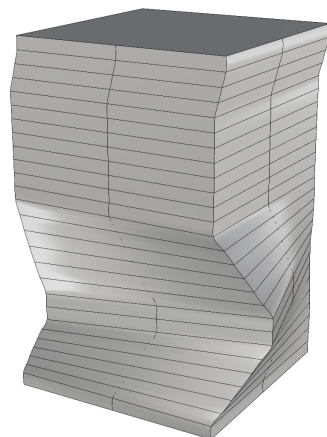
Horizontal Segmentation



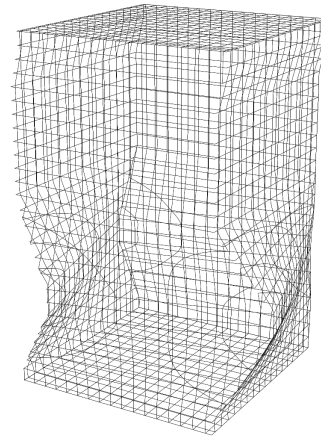
Push/Pull



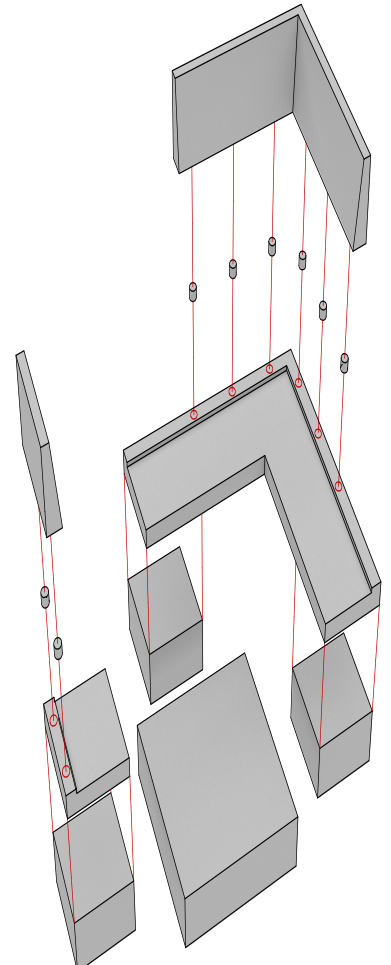
Rotation



Enclosed Form

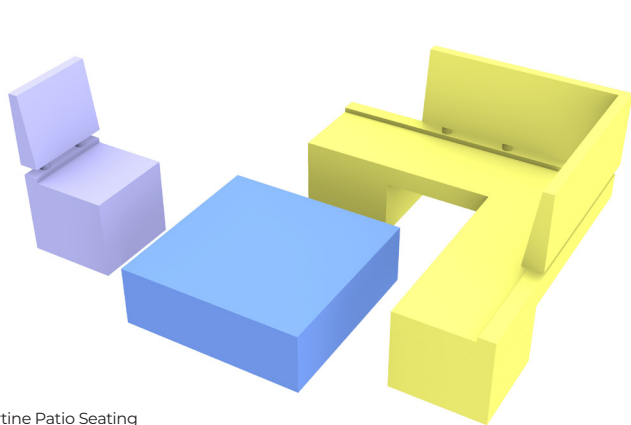


Glazing Waffled Enclosure

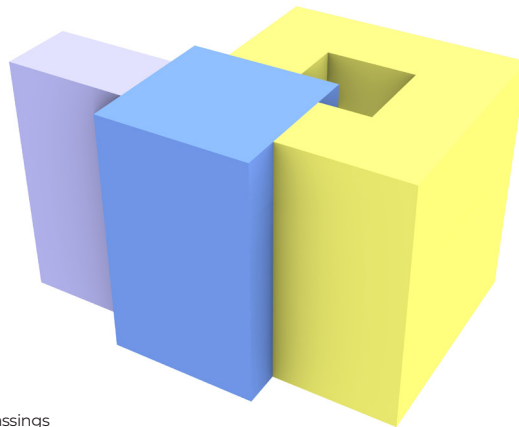


Patio Seating Exploded Axonometric

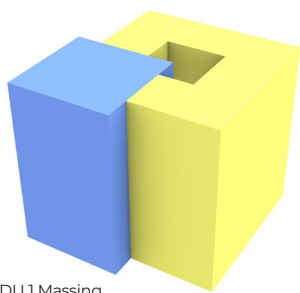




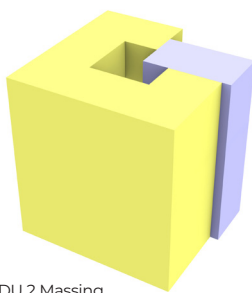
Vespertine Patio Seating



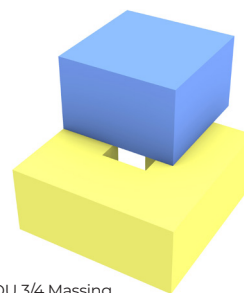
Simplified Massings



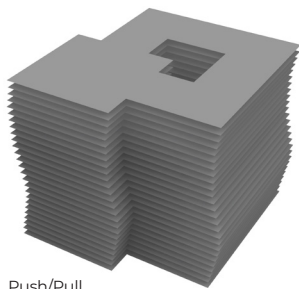
ADU 1 Massing



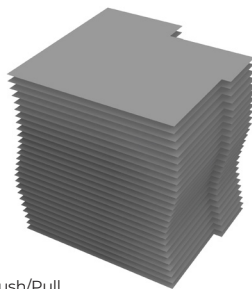
ADU 2 Massing



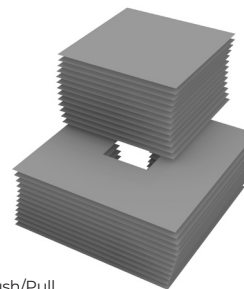
ADU 3/4 Massing



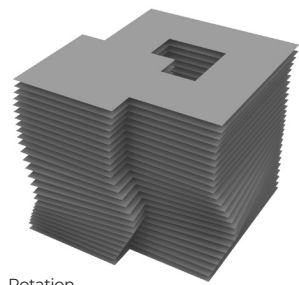
Push/Pull



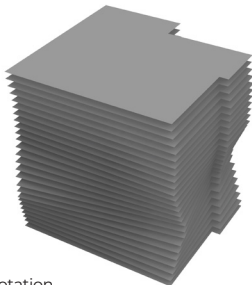
Push/Pull



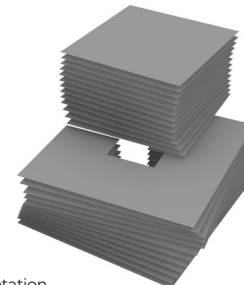
Push/Pull



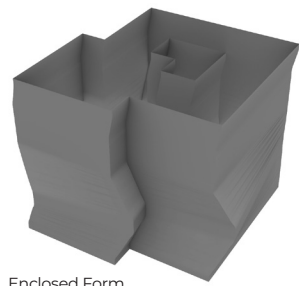
Rotation



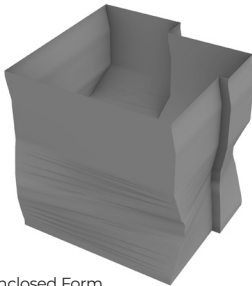
Rotation



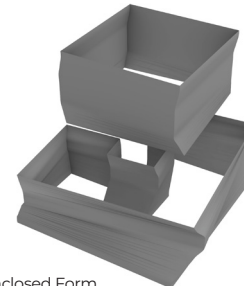
Rotation



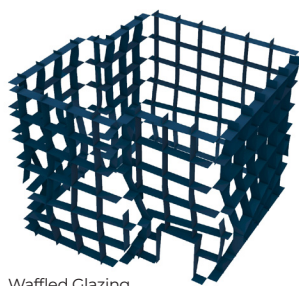
Enclosed Form



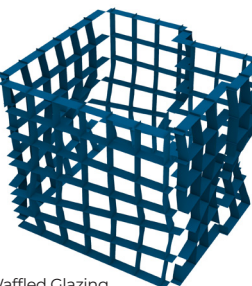
Enclosed Form



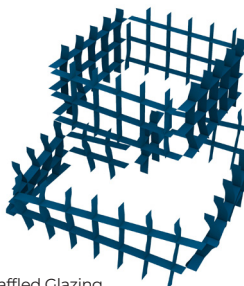
Enclosed Form



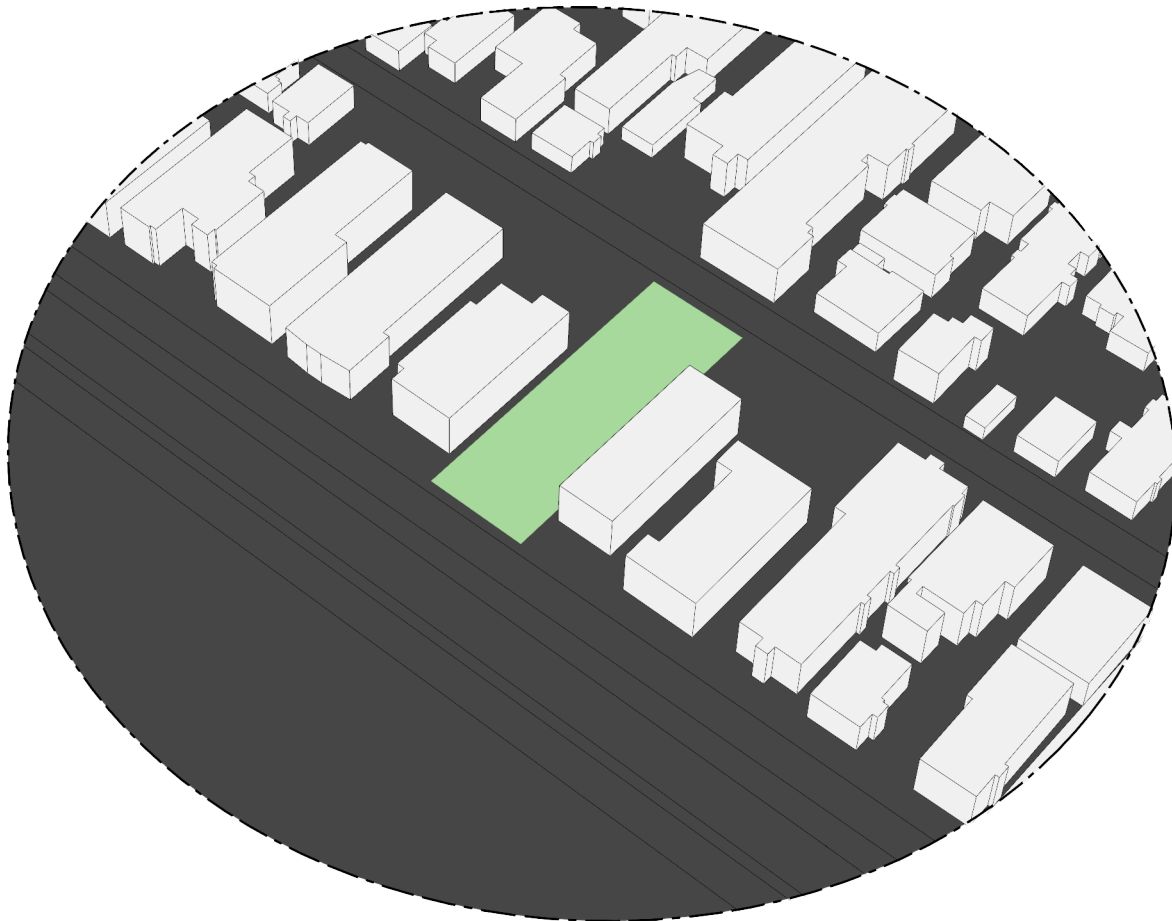
Waffled Glazing



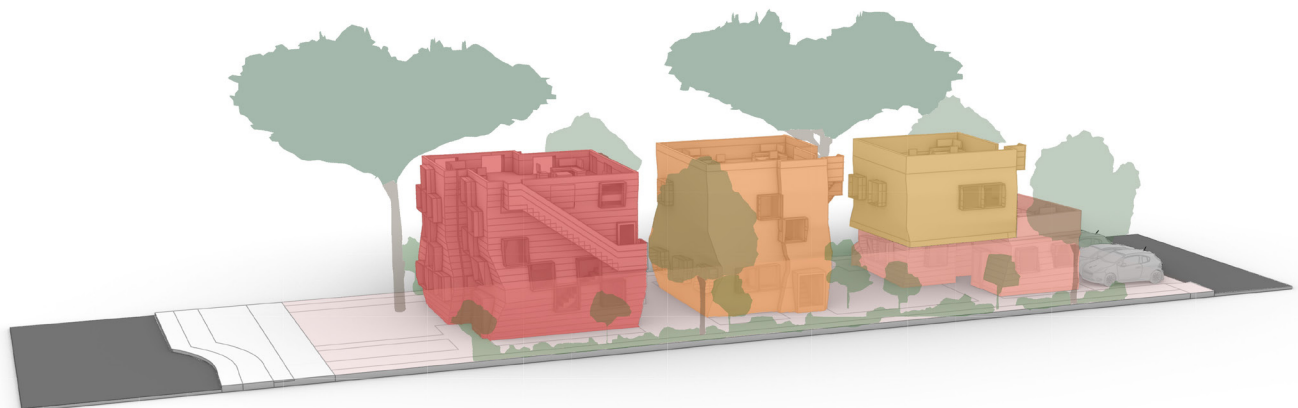
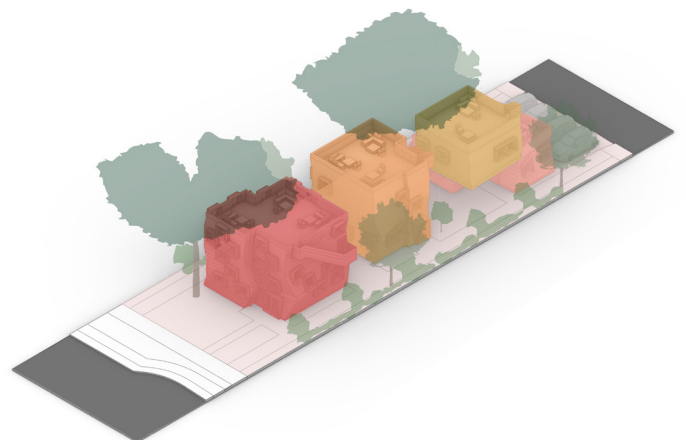
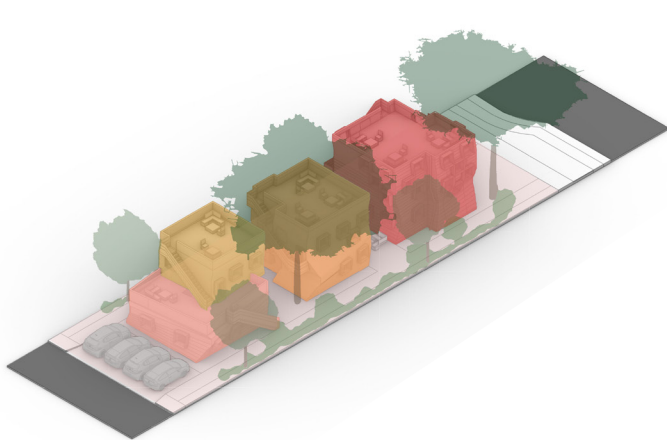
Waffled Glazing



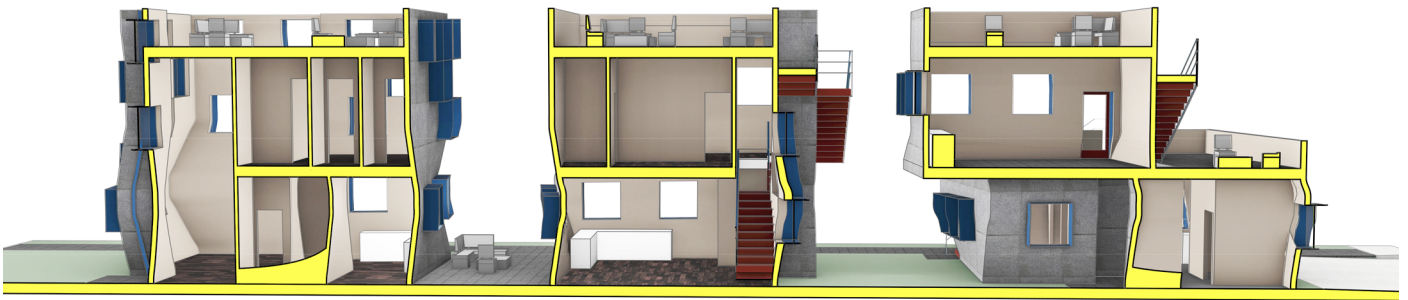
Waffled Glazing



SITE STUDY



SITE DIAGRAM

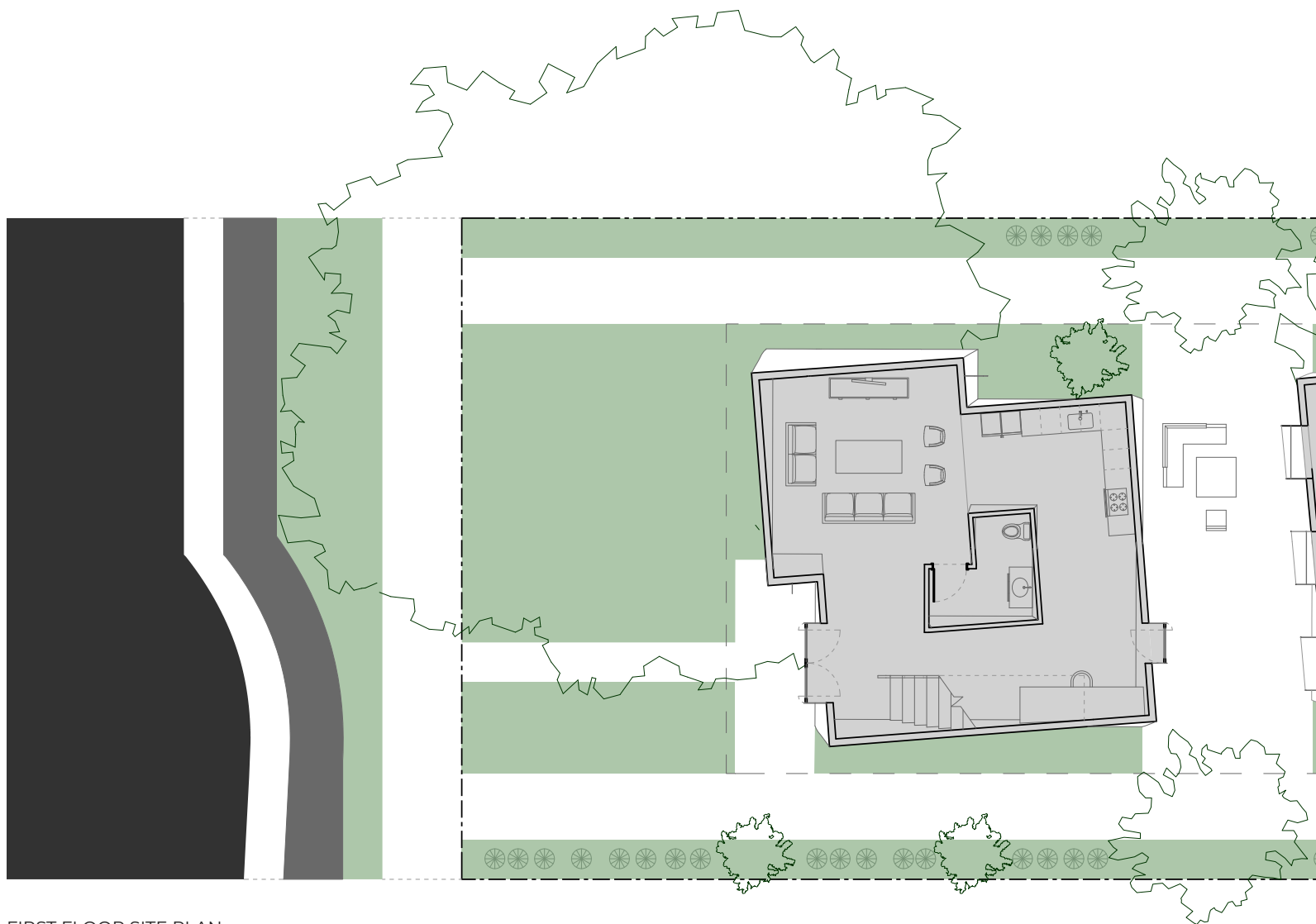


EAST SECTION

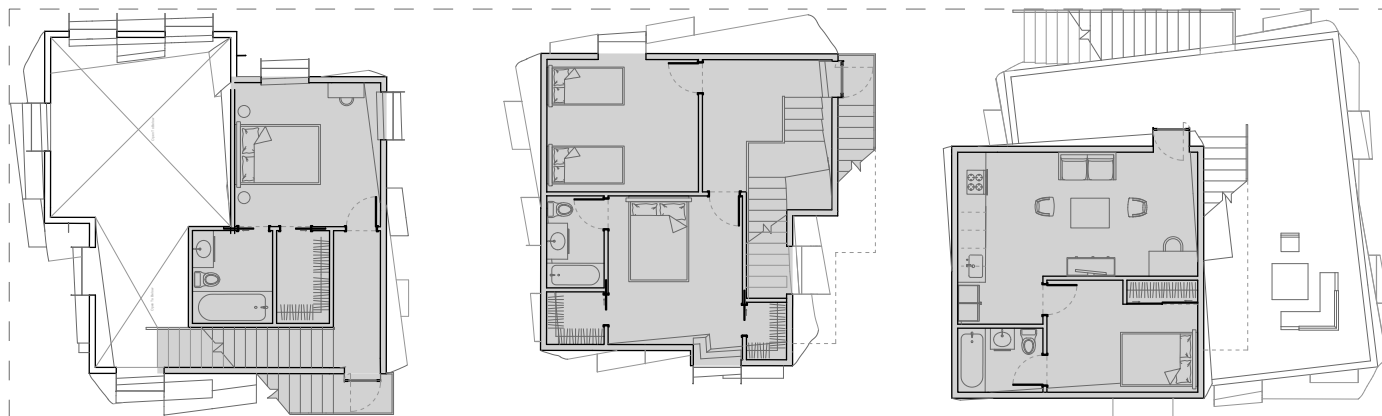


WEST ELEVATION

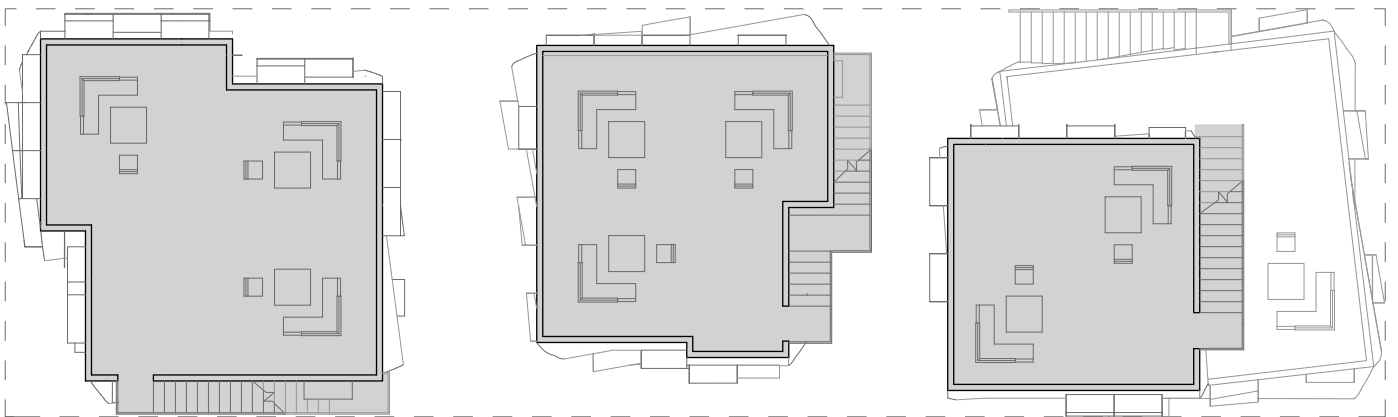
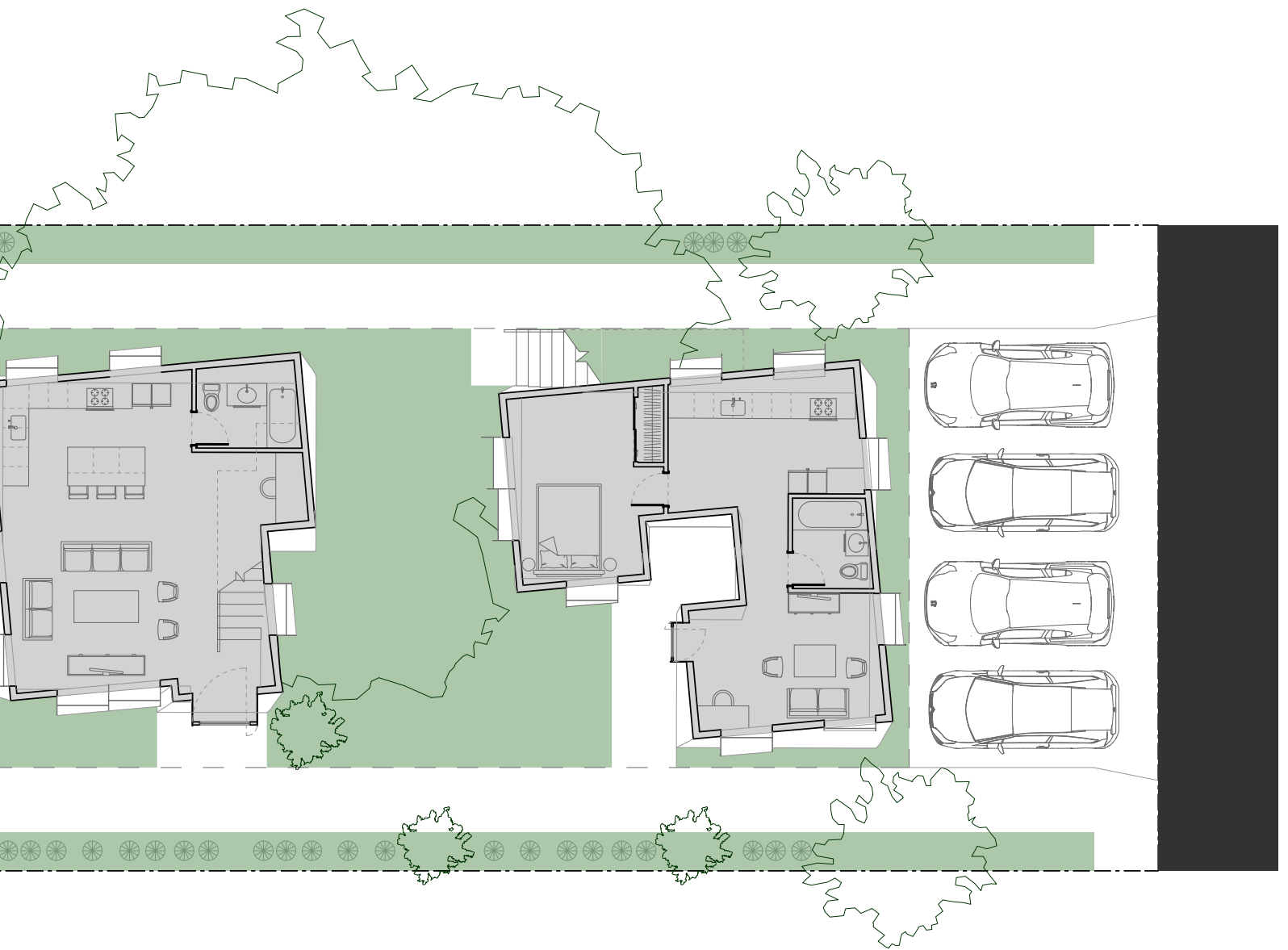




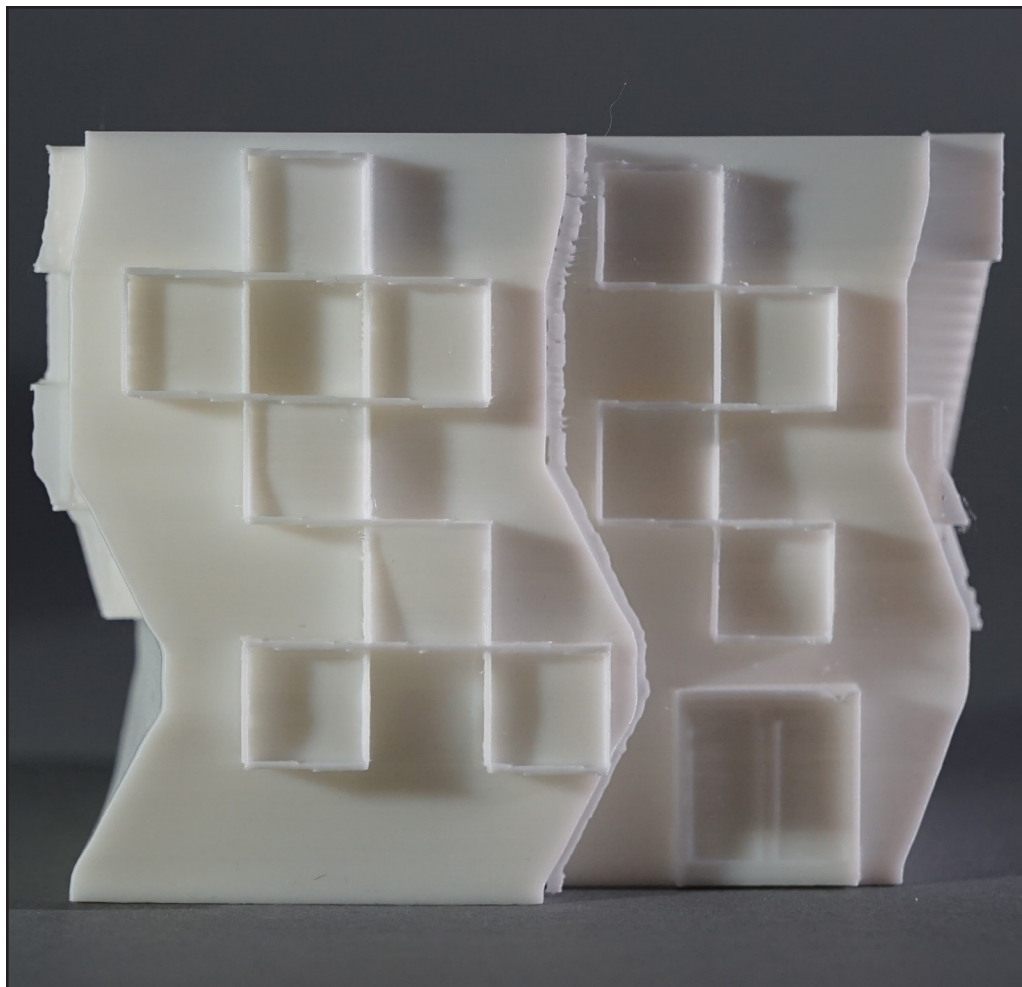
FIRST FLOOR SITE PLAN



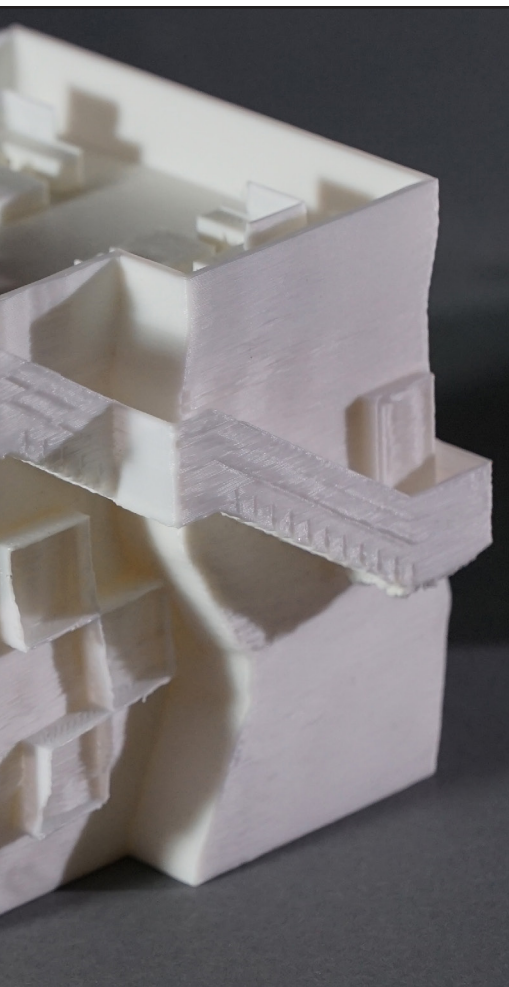
SECOND FLOOR PLAN



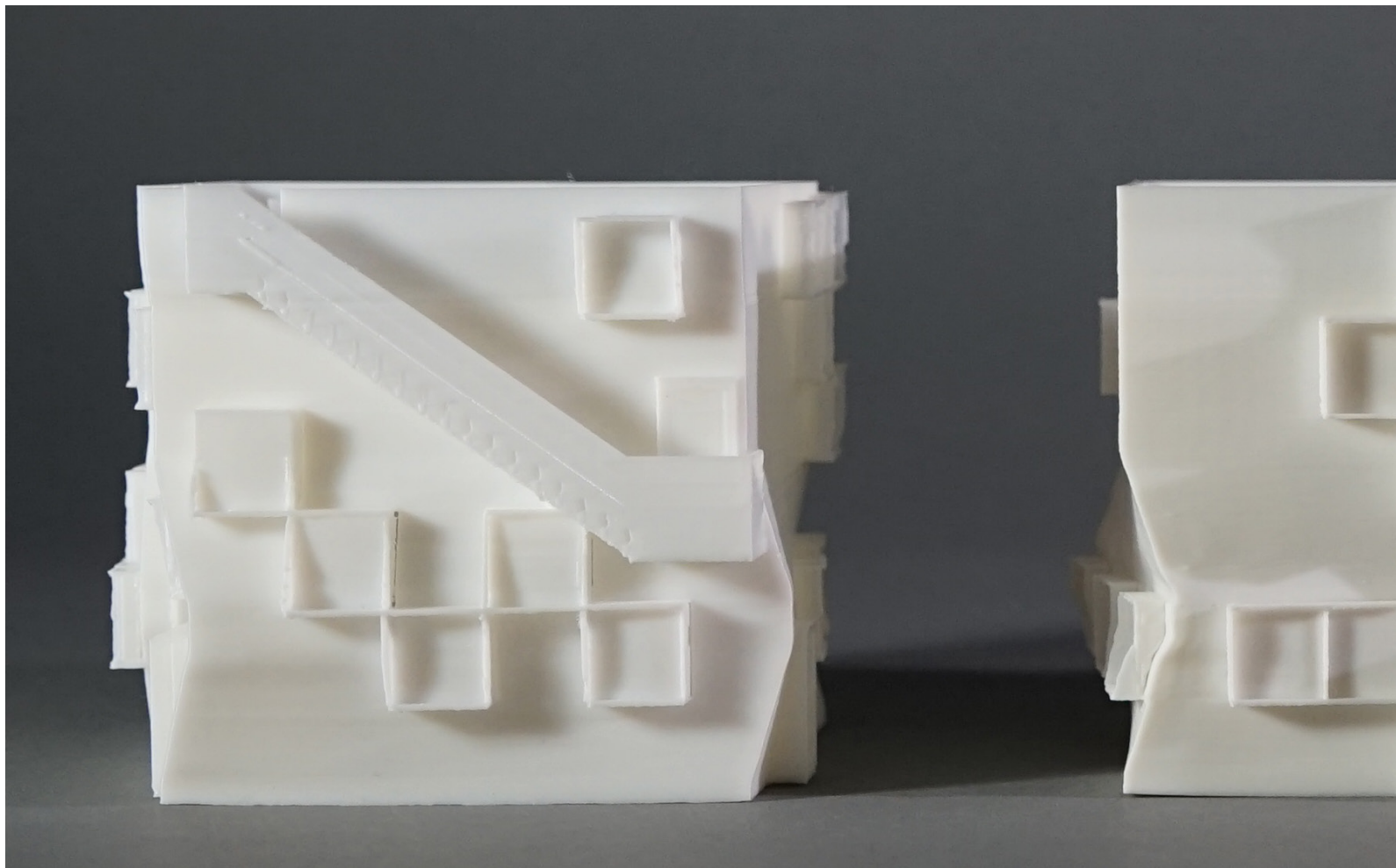
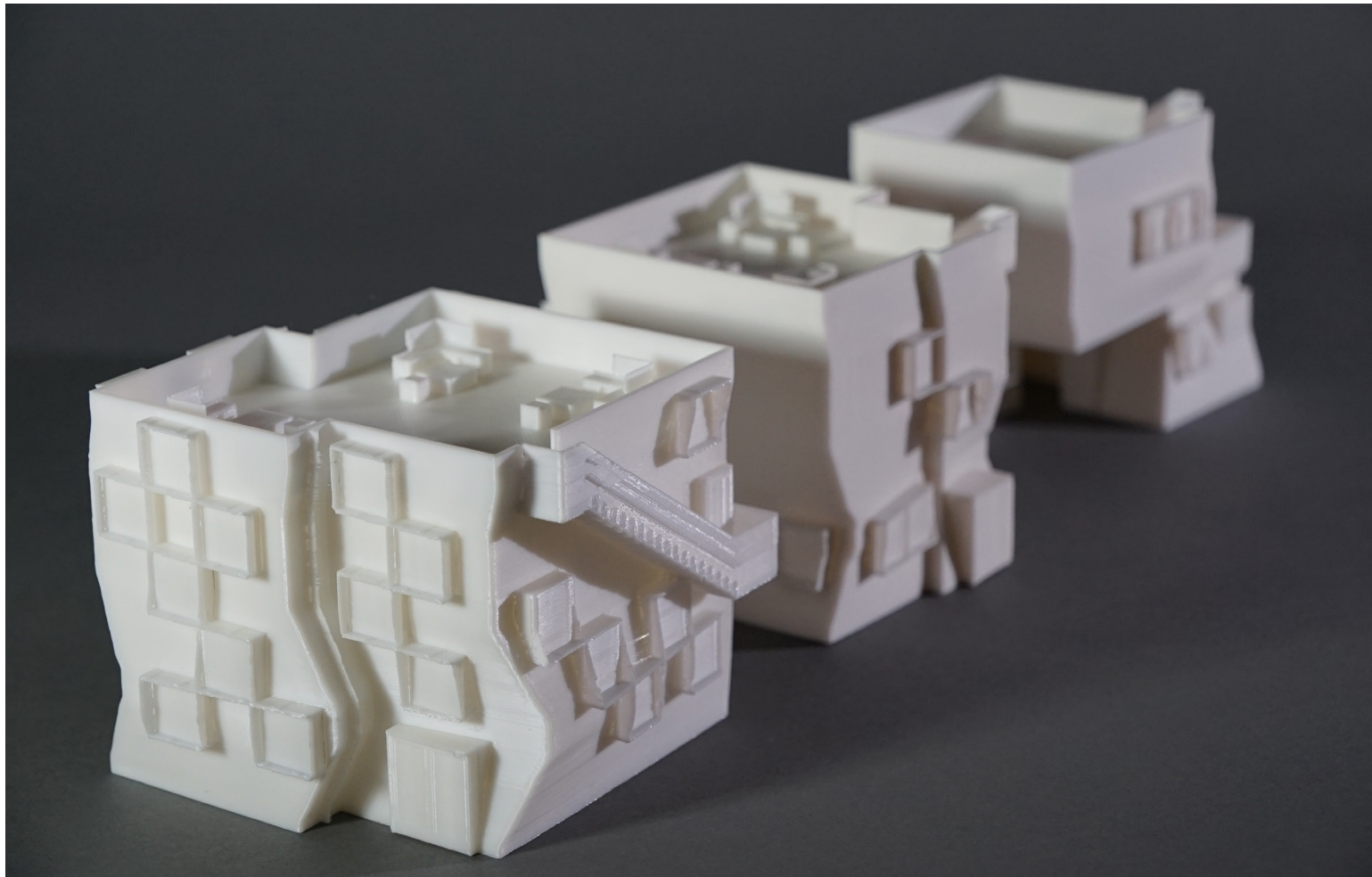
ROOF PLAN

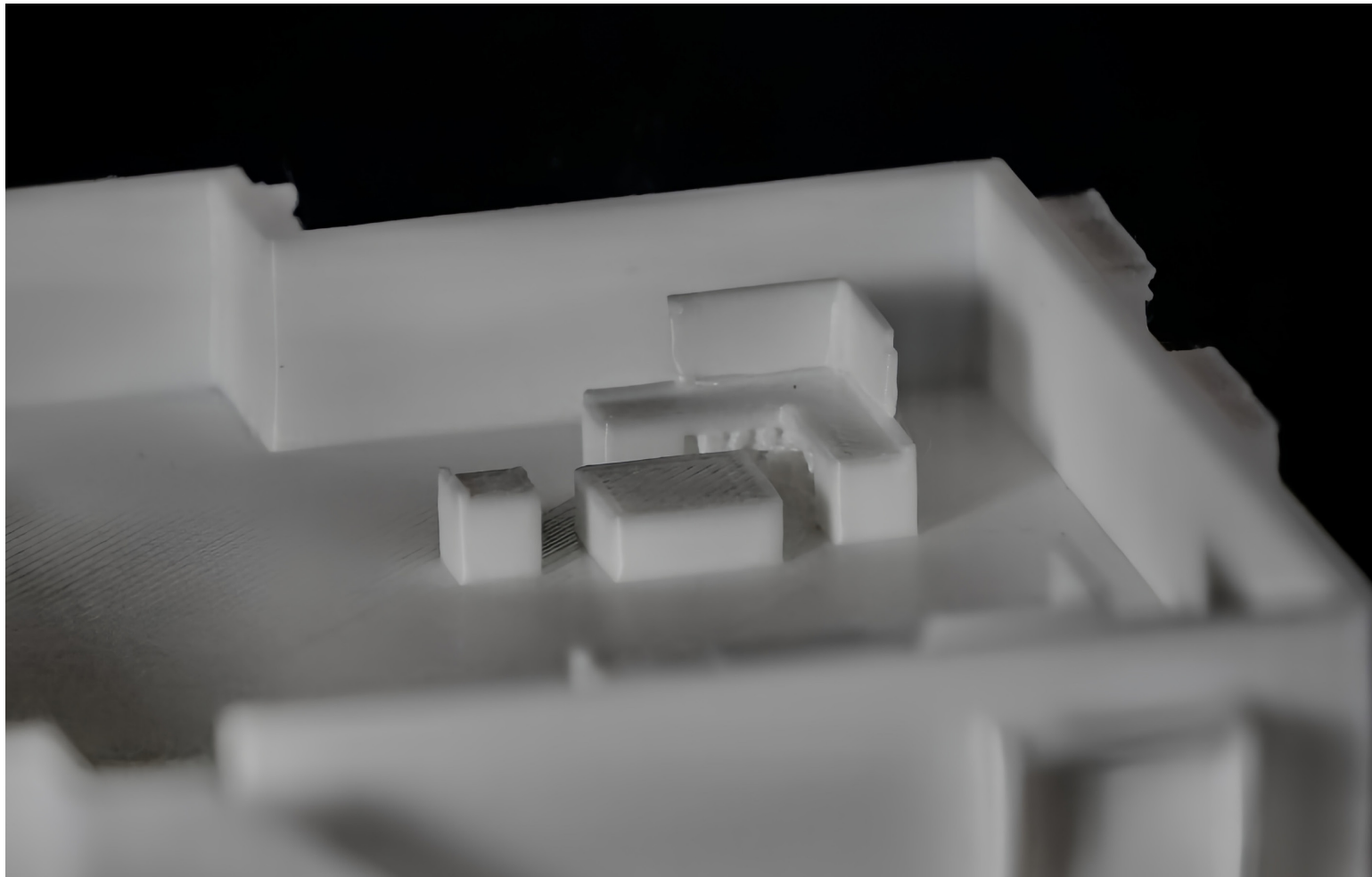




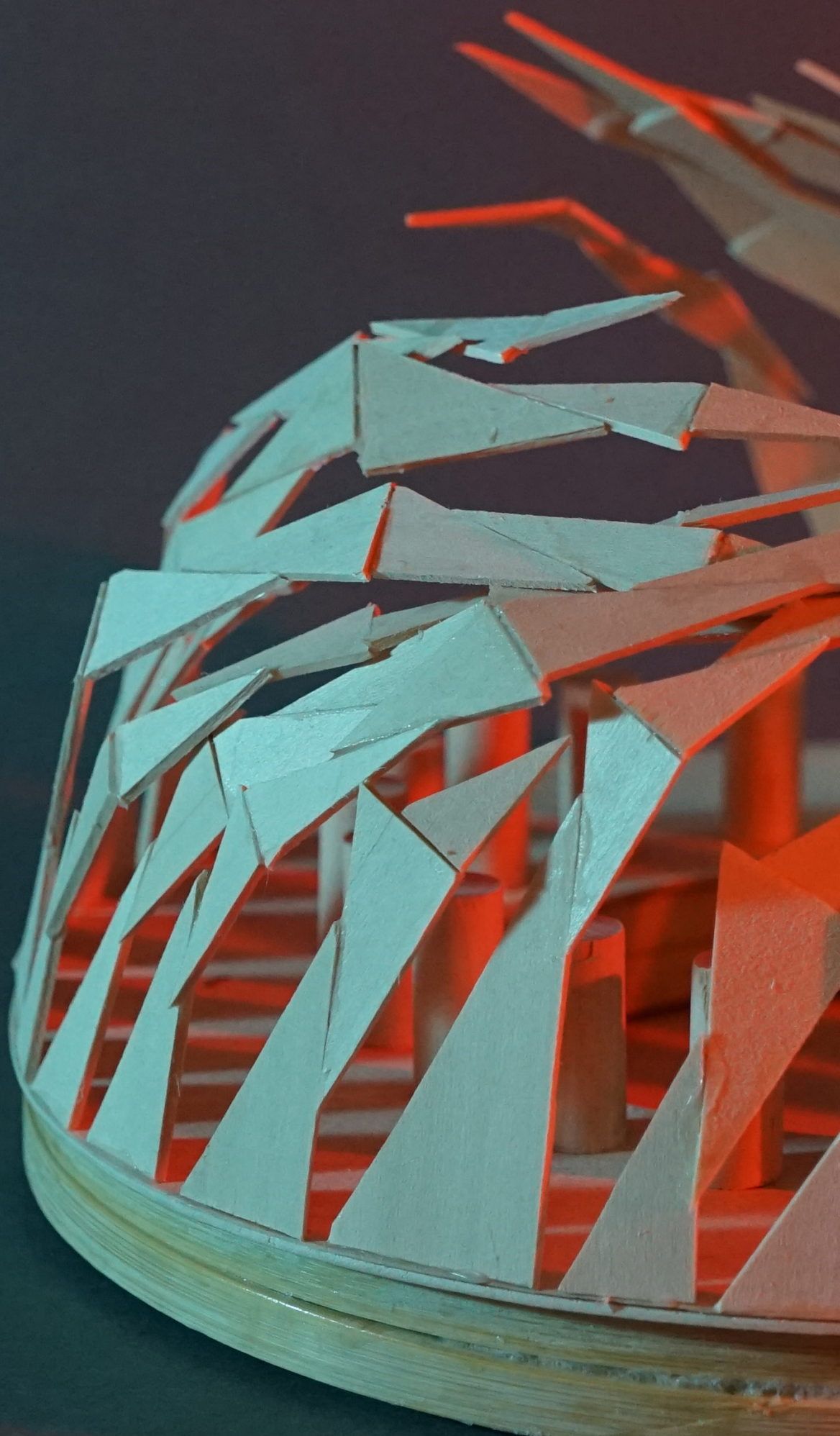






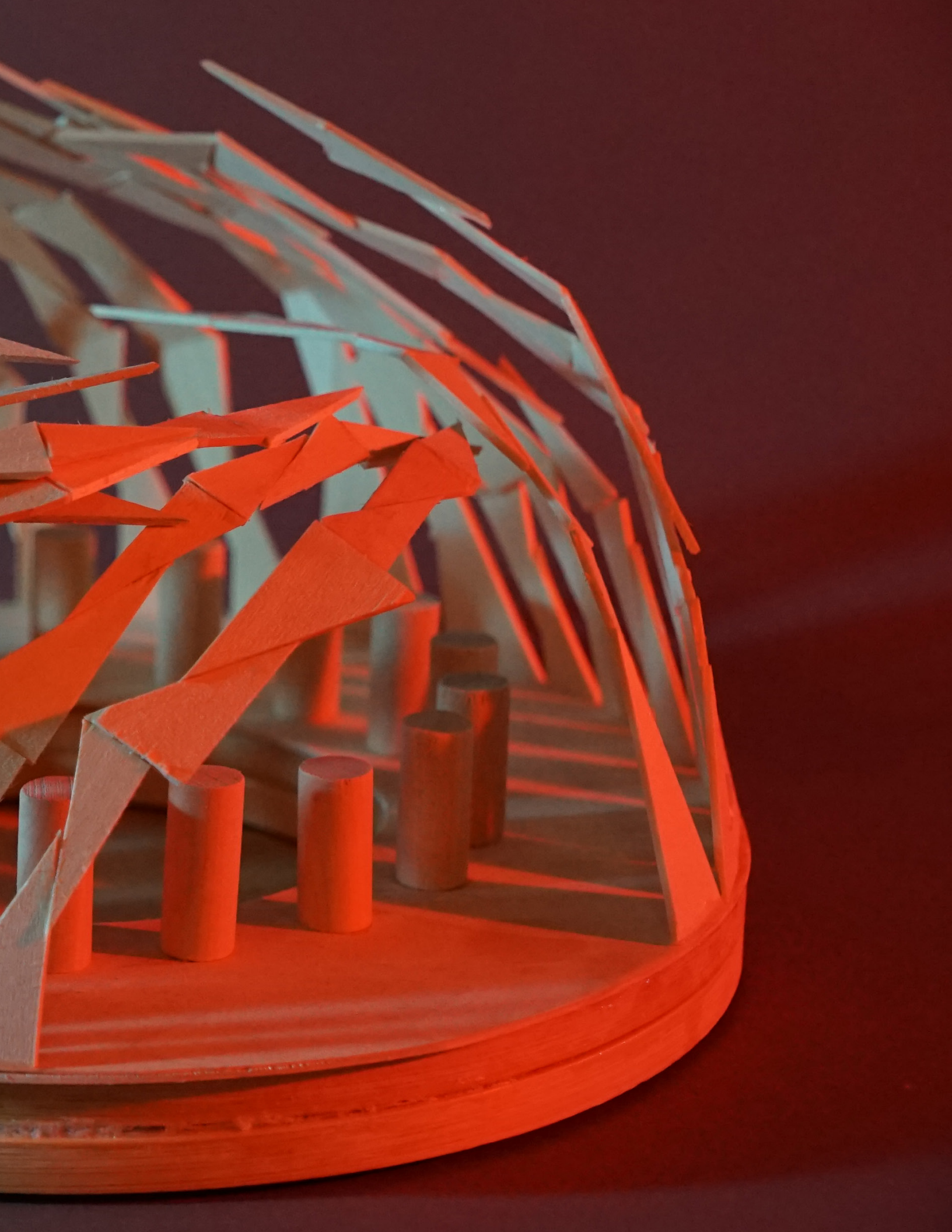






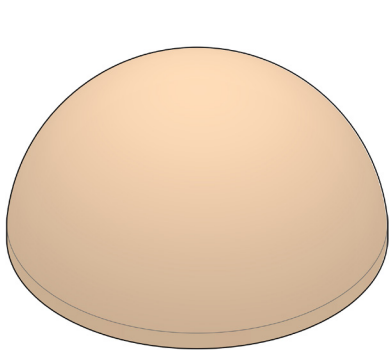
LA CHINESE MASSACRE MEMORIAL



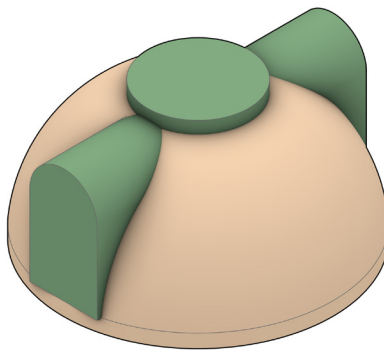


The Los Angeles Chinese Massacre Memorial commemorates the 19 innocent Chinese citizens who were murdered in 1871. The Chinese Massacre is a forgotten part of Los Angeles History that reduced the Chinese population at the time by over ten percent. The fully wood structure stands at 22 feet tall and has a diameter of 40 feet. 19 pillars, representing the 19 victims of the massacre, surrounds a shallow pool of water in the center of the structure. The spiraling structure on the border of the memorial is formed using 153 triangular wood pieces, representing the Chinese population in Los Angeles in 1871 after the massacre.

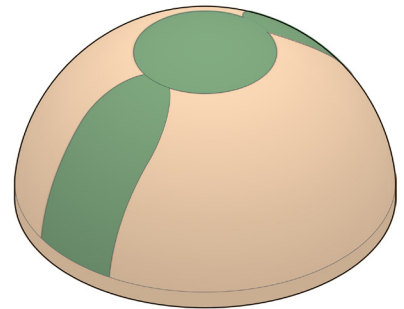
The memorial focuses on the Chinese symbolism of wood, water, and fire, and how they interact with one another. The 19 pillars of wood, similar to chopped trees, have the name of each victim etched into the pillar. Wood is the most human of all the elements, which is why the chopped down trees represent the 19 people that were murdered. Water is in the center of this circle of pillars because water is what fuels wood, water is the source of life. Water also represents contemplation, calmness, reconsideration, observance, and reflection. The idea is that when people interact with this memorial, they can stare back at their reflection in the central pool of water, the source of life, and reflect on this horrific event and those who lost their lives. Fire symbolizes combustion. The outer shell of the memorial follows the shape of a flame to represent the hecticness that is associated with fire. The calmness and stillness of the water inside the memorial, is meant to contrast that of the flame on the exterior. Fire symbolizes combustion. The outer shell of the memorial follows the shape of a flame to represent hecticness. The calmness and stillness of the water inside the memorial contrasts that of the flame on the exterior.



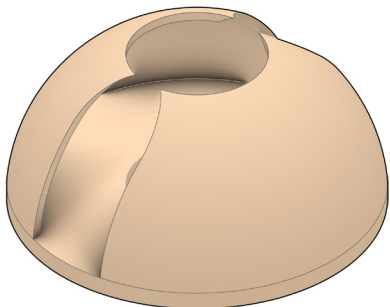
Dome



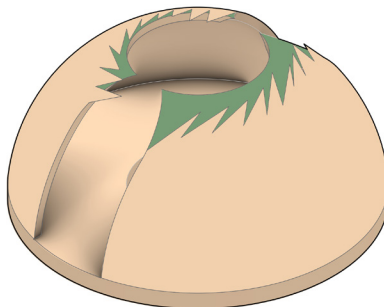
Intersection



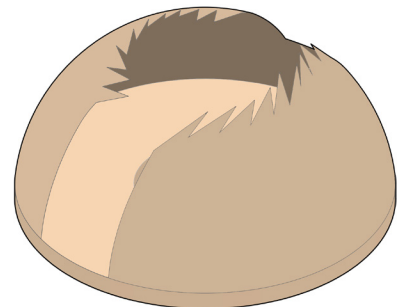
Cut



Void

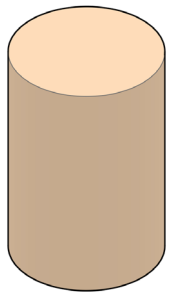
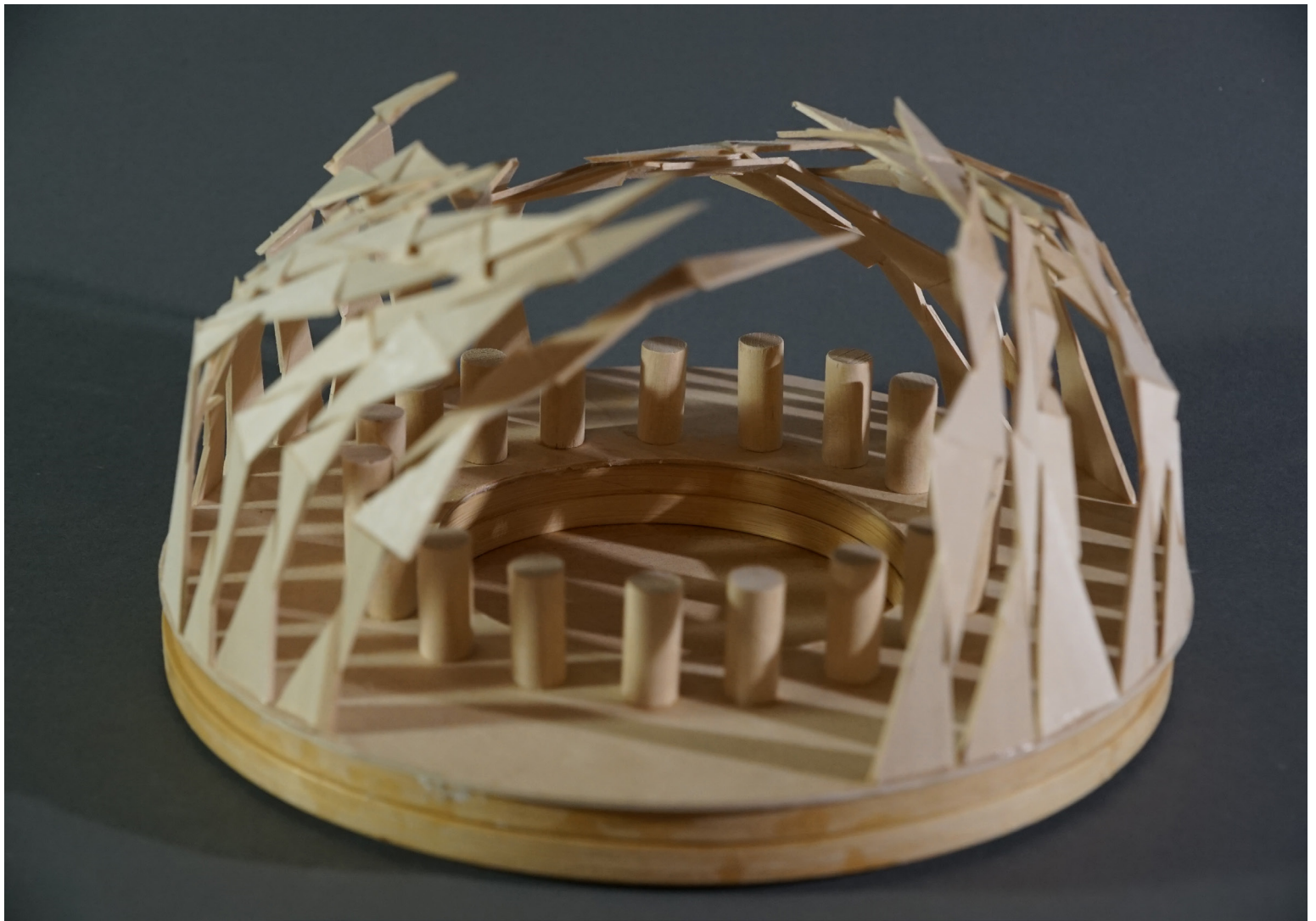


Cut



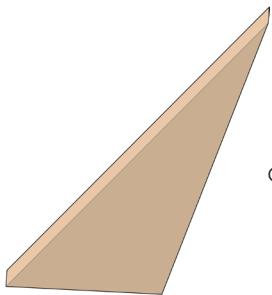
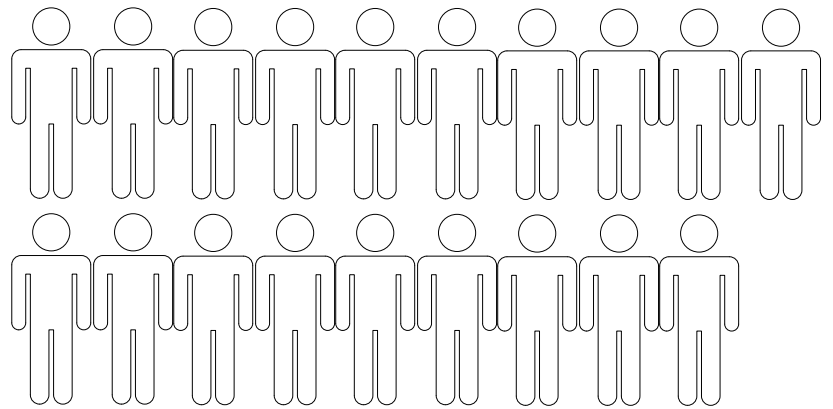
Final Massing





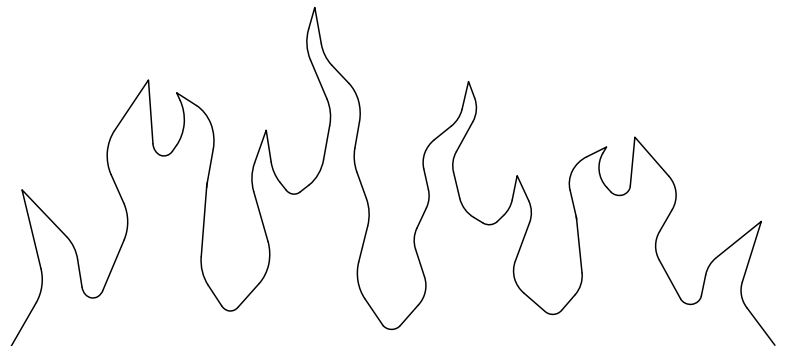
x 19  
Chinese Victims

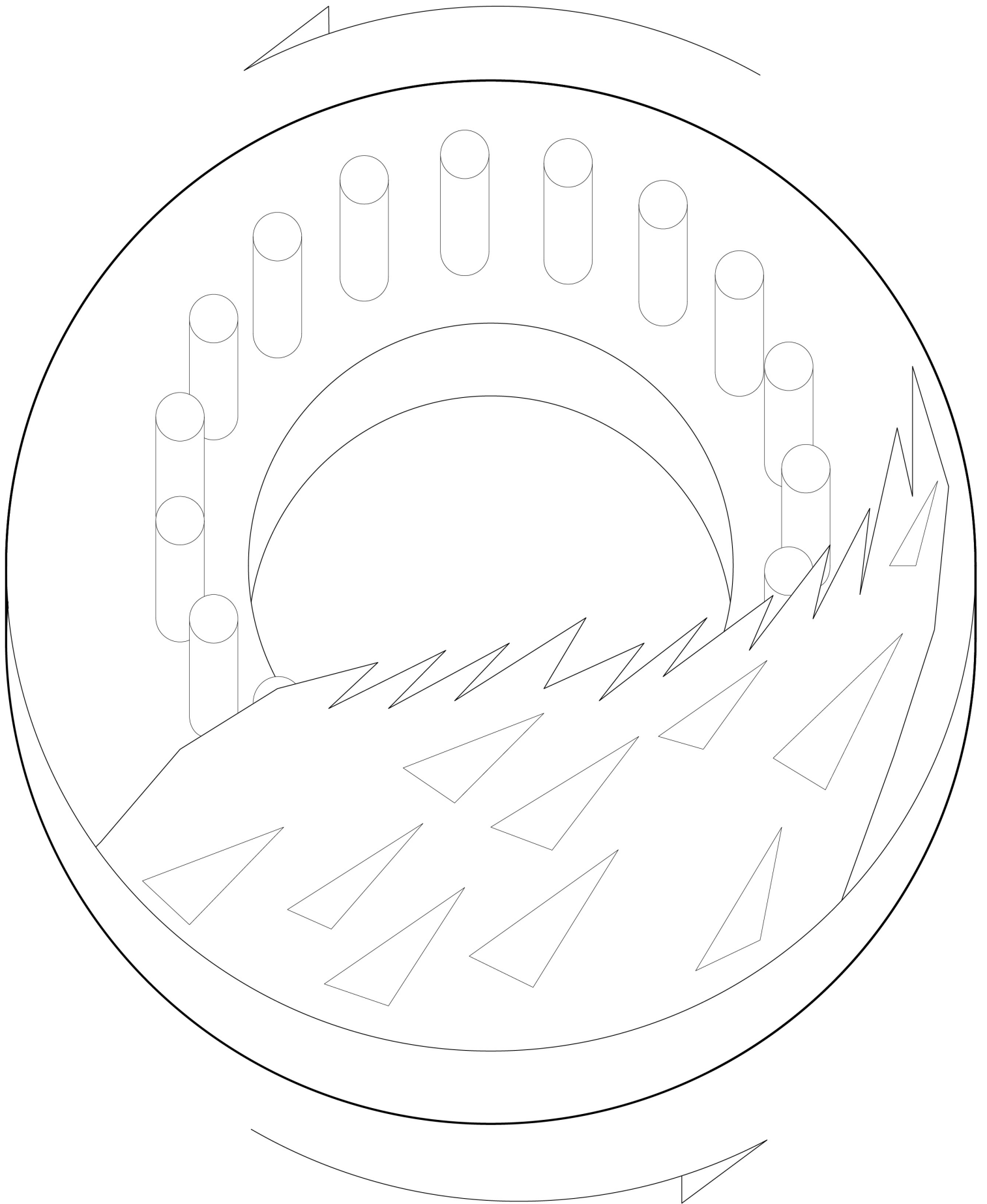
=



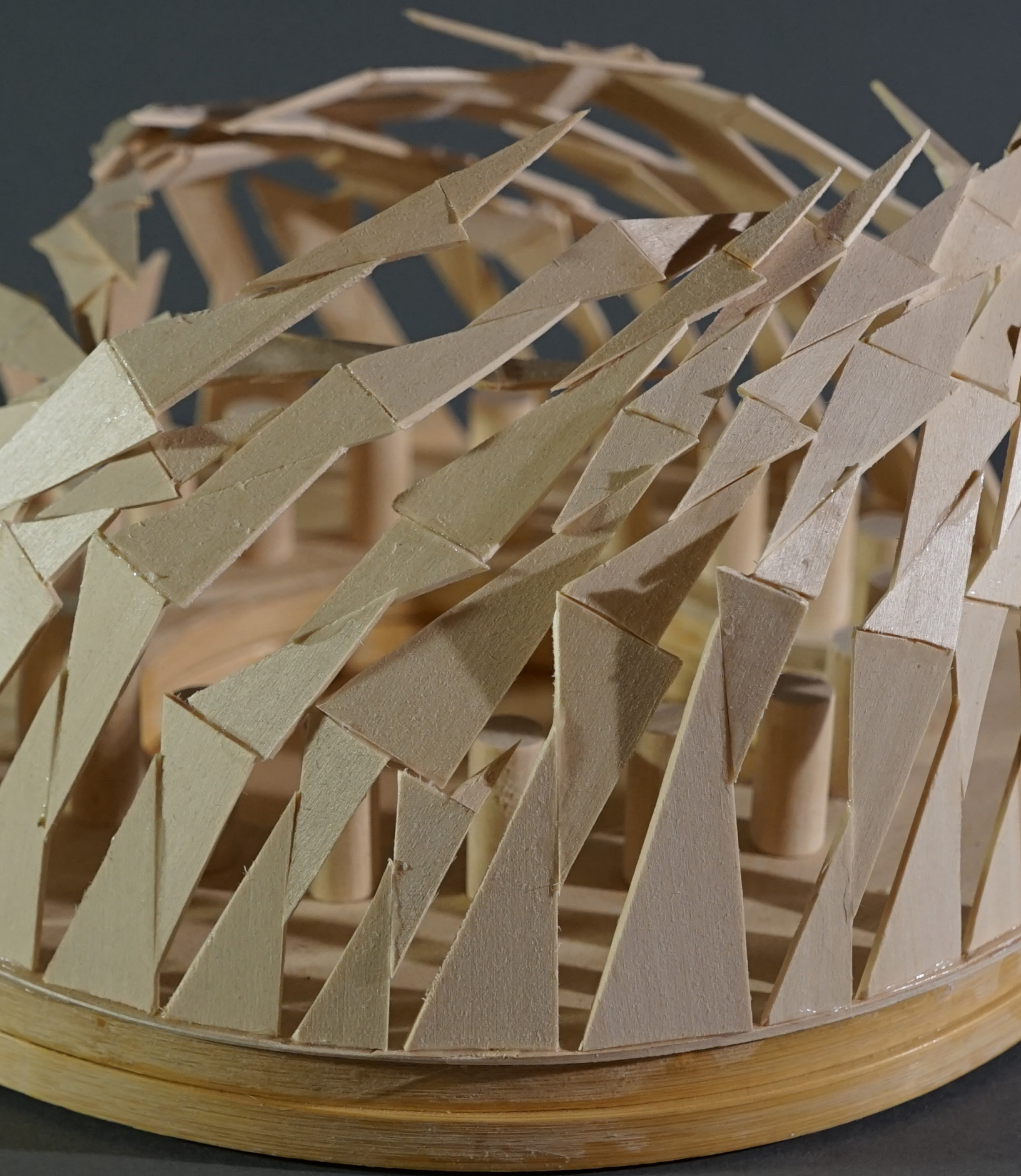
x 153  
Chinese Population  
Post-Massacre

=













CASE STUDY HOUSE MODERNIST ADU





## 04

# CASE STUDY HOUSE MODERNIST ADU

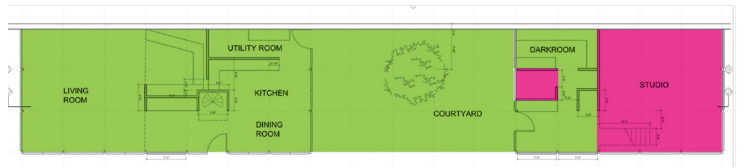
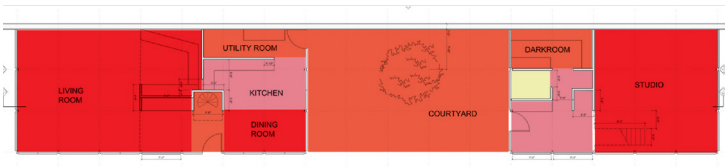
INSTRUCTOR: JAVIER CAMBRON  
PARTNER: ALEJANDRO CORDOVA  
STUDIO 2  
2024

This project started with a precedent study of Case Study House #1 and Case Study House #8. My partner and I categorized the floor plans of each house by room usage, and found the square footage of each category. We then created cubic massings based on the square footages of each house's bedrooms, bathrooms, and kitchens. The massings were then used to create the programmatic aggregation of our ADU.

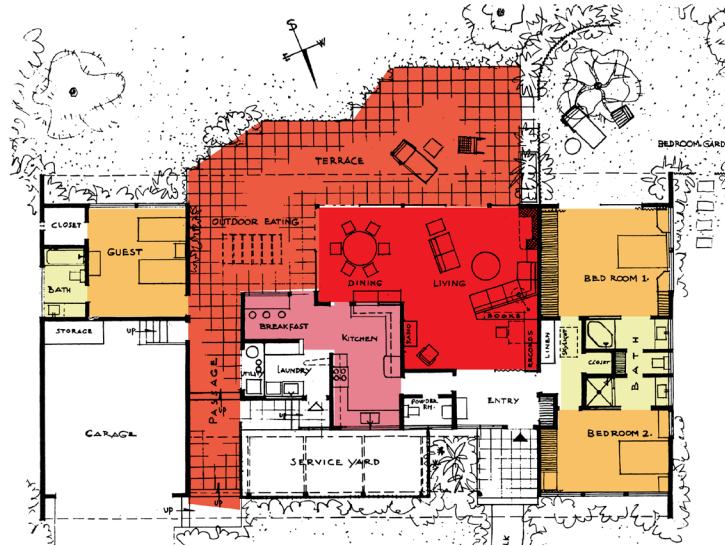
The ADU was then designed focusing on the concept of "Expand." The edges of the roof were expanded to create sloped roofs, and the bedroom on the east side of the unit was stretched vertically to add a loft area to the bedroom. The 2nd floor was also expanded horizontally to create shade structures and a balcony. The tall floor to ceiling windows also work to further convey the idea of expansion. The idea of this ADU is that one will feel the concept of "Expand" while walking through it, with its long hallways and extended walls the force the eye to look out into the distance.







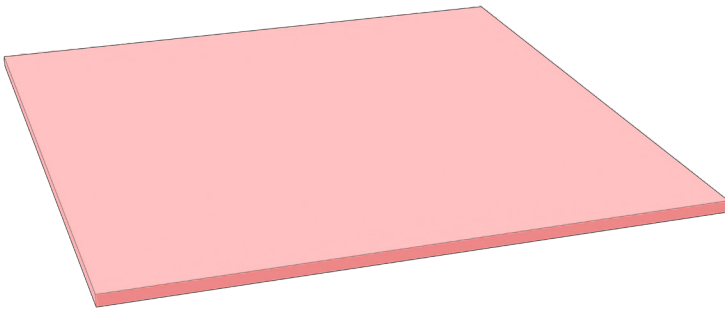
CASE STUDY HOUSE #8 FLOOR PLAN



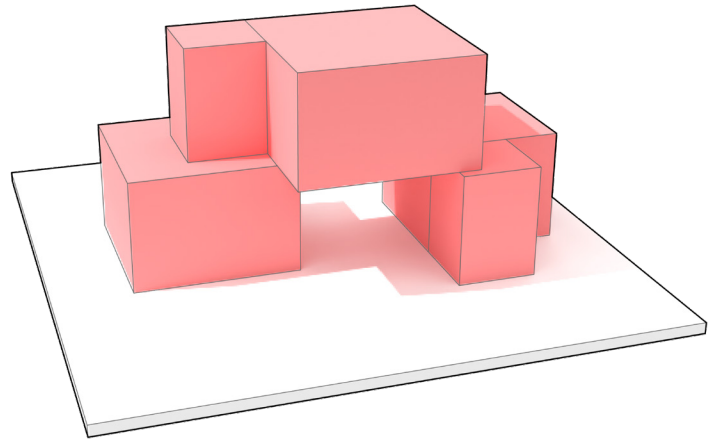
CASE STUDY HOUSE #8 FLOOR PLAN

- Primary Living
- Secondary Living
- Bedrooms
- Bathrooms
- Kitchen

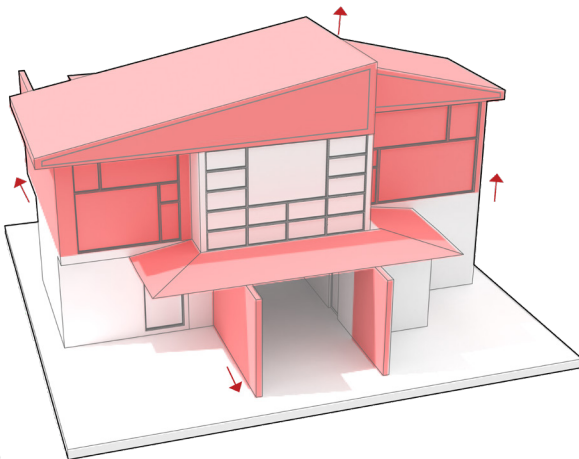
- Public Space
- Private Space



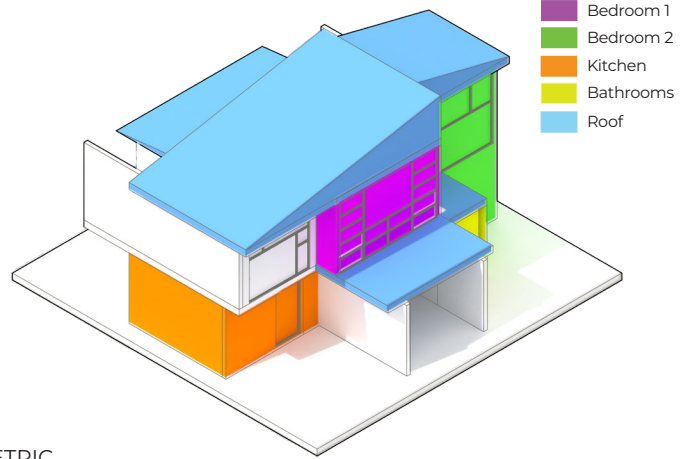
SITE



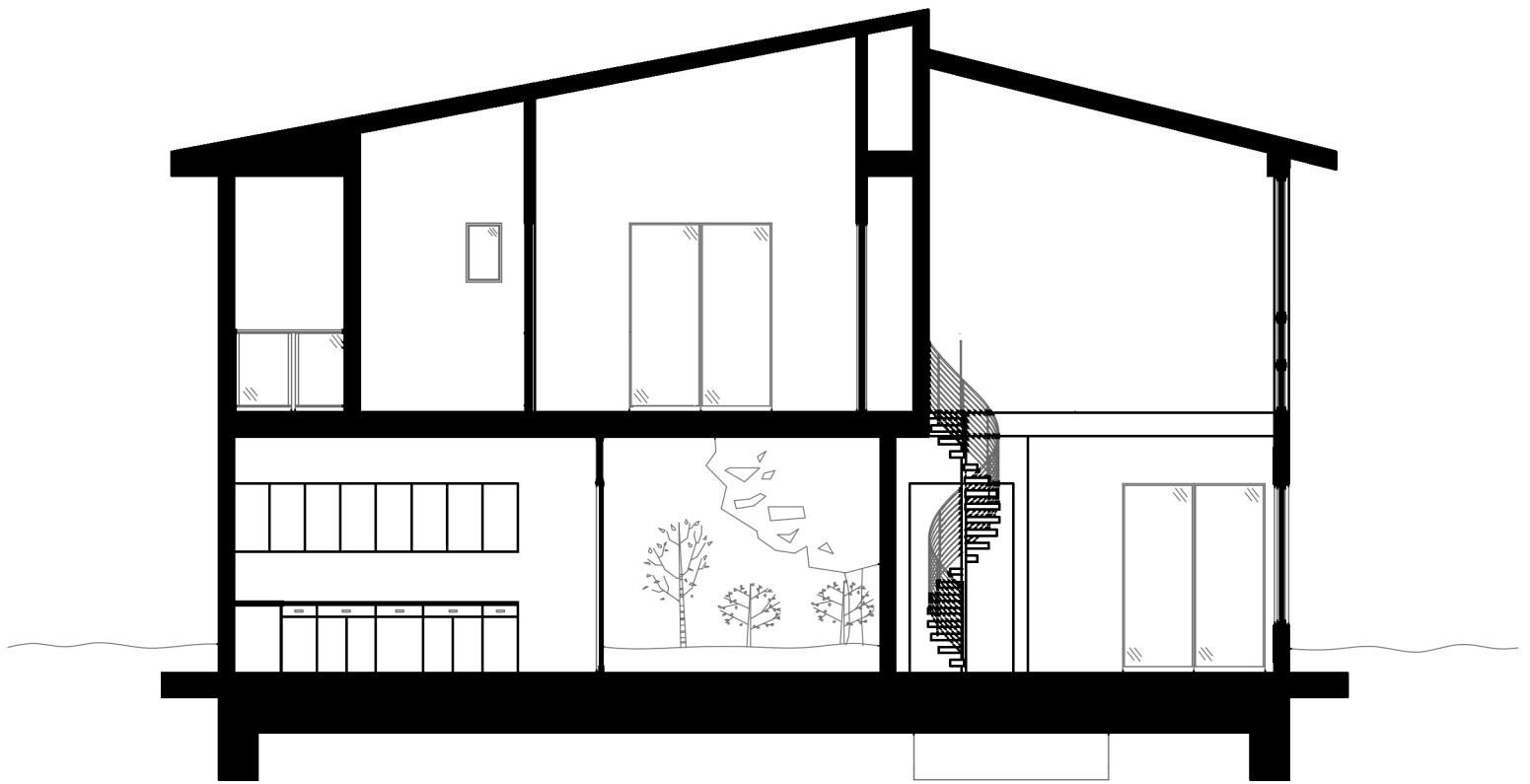
PROGRAMMATIC AGGREGATION



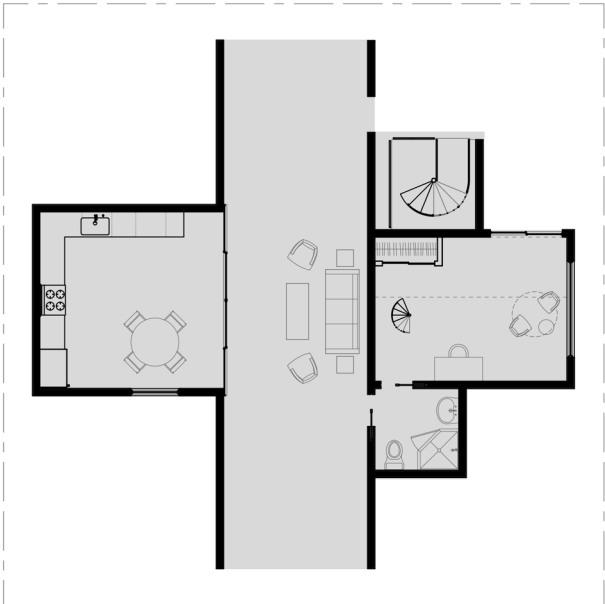
EXPAND



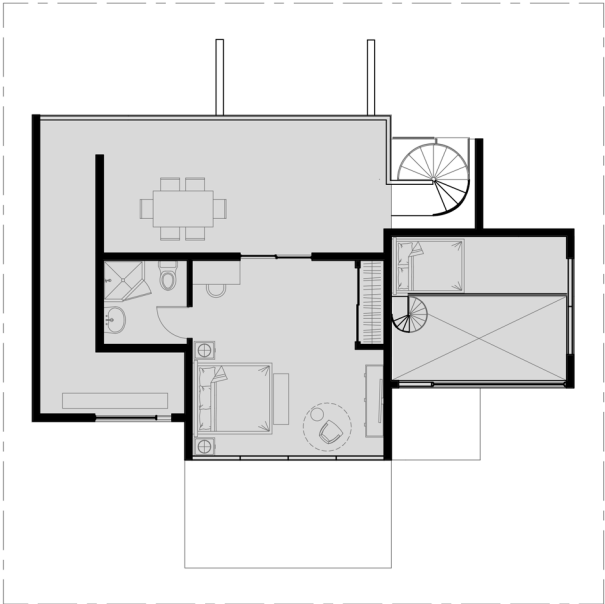
ISOMETRIC



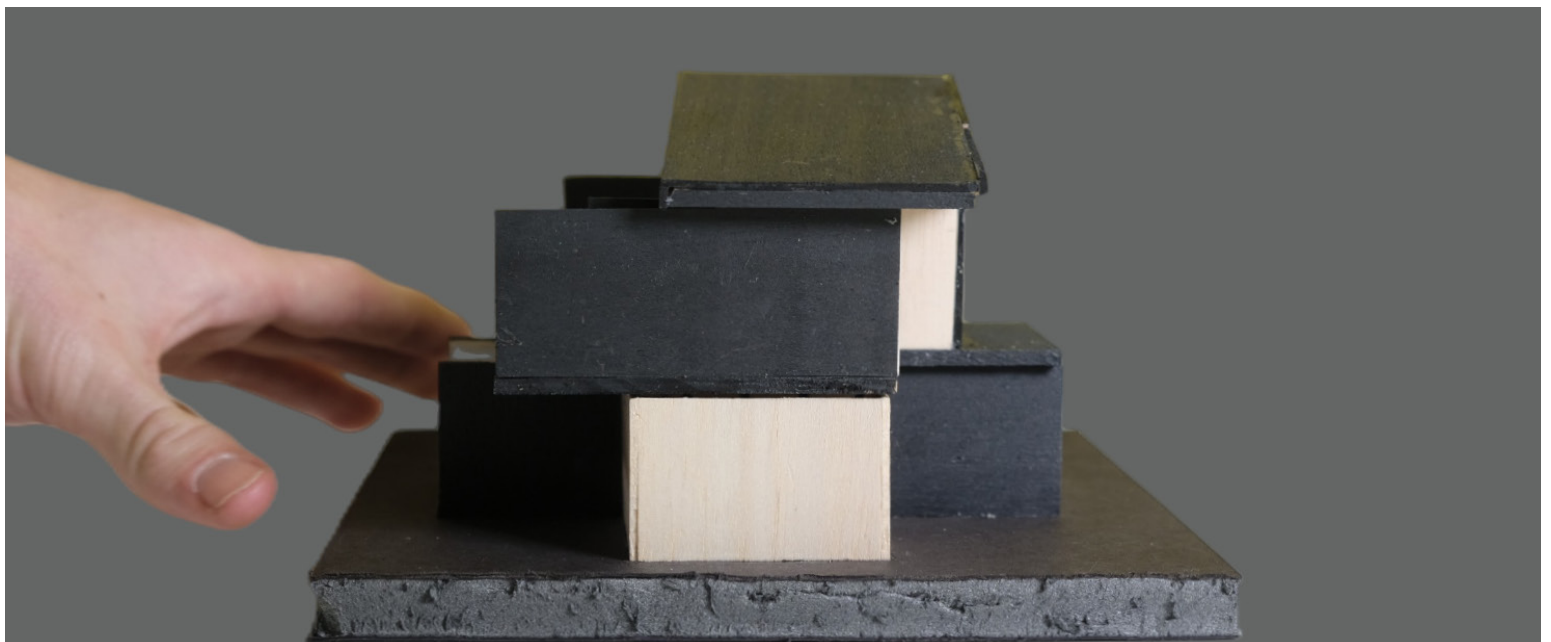
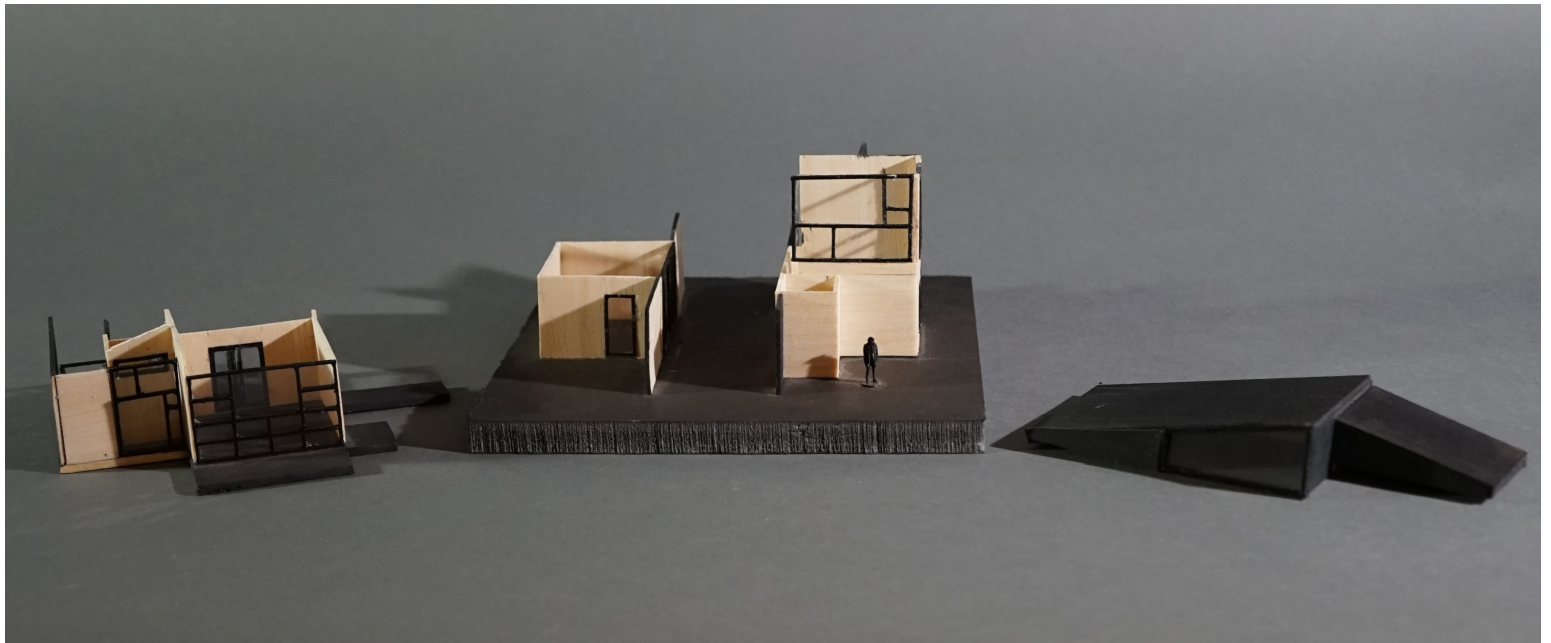
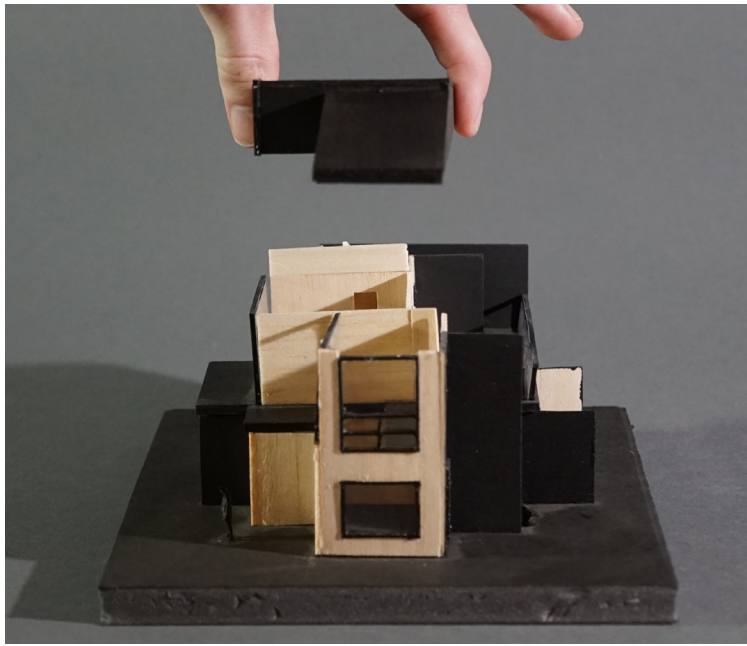
SOUTH SECTION



FIRST FLOOR PLAN



SECOND FLOOR PLAN







# KYLE DAOU

[kyledaou@gmail.com](mailto:kyledaou@gmail.com)

(818) 970-9279

[archinect.com/kyle](http://archinect.com/kyle)

Burbank, CA