

P O R T F O L I O

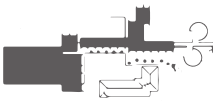
MAYANK
SHARMA

CONTENTS

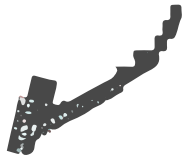
ACADEMIC PROJECTS UNIVERSITY AT BUFFALO



EMERGENT TERRACES
A CONTEMPORARY ARTS GALLERY
4 - 13



BIG PROJECTS STUDIO
RE-IMAGINING BUFFALO WITHOUT
EXPRESSWAYS
14 - 19



EQUESTRIAN CENTER
HEALING THE NEIGHBORHOOD
20 - 25



ECO-ELEGANCE
A NATURE CENTER AND BOARDWALK
26 - 33



BRIDGING THE DIVIDE
UNIVERSITY AT BUFFALO'S
CULTURAL CAMPUS IN MADRID
34 - 39



SKETCHING SPANISH MODERNISM
UNIVERSITY AT BUFFALO
STUDY ABROAD IN MADRID
40 - 41

Mayank Sharma

M.Arch Portfolio 2022-2025 + Professional Work
Master of Architecture 2025
School of Architecture and Planning
University at Buffalo/ SUNY Buffalo
archmayankrise@gmail.com

PROJECTS WITH AR. DEEPANSHU GARG CHANDIGARH, INDIA



A REVITALIZED ABOHAR MANDI
URBAN DESIGN PROJECT
42 - 47



REACHING THE GRASSROOTS
MODULAR LIBRARY TEMPLATE
48 - 49

KIDENEY ARCHITECTS BUFFALO, NY



RUPAL HOSPITALITY
MIXED USE DEVELOPMENT
50 - 51



ENDEAVOR BROADWAY
A MENTAL WELLNESS
INSTITUTION
52 - 53



FANTASTIC FRIENDS
INSTITUTE FOR THE SPECIALLY
ABLED
54 - 55



CMH-KMH UROLOGY ROOM
INTERIOR RETROFITTING AND
RENOVATION
56 - 57

AJAI JOHL AND ARCHITECTS CHANDIGARH, INDIA



URBAN RESPITE
RESIDENTIAL PROJECT
58 - 61



OLIVE TROTTERS
A RESORT PROJECT
62 - 65

PROFESSIONAL WORK



Winter daytime front view from street intersection

EMERGENT TERRACES

A CONTEMPORARY ARTS GALLERY

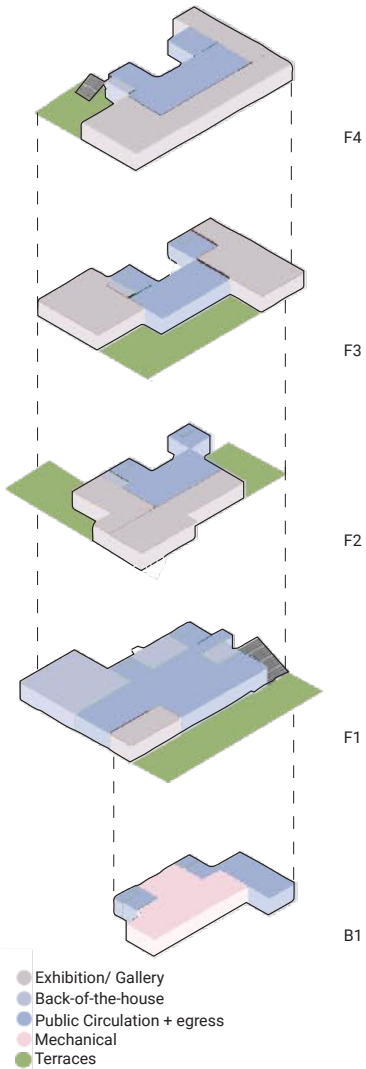
Downtown Buffalo, New York
 Academic Group Project, M.Arch
 Spring 2023
 Professor Gregory Serweta
 Team member - Sean Burnstein
 Software - Revit, Rhino, Lumion,
 Auto CAD, Illustrator, InDesign,
 Photoshop and Climate Consultant

A contemporary arts gallery is proposed as a cultural catalyst for downtown Buffalo, NY. The design strategy revolves around the manipulation of floor plates to generate a series of interconnected outdoor terraces. Through the strategic rotation of these levels, a dynamic and visually compelling facade emerges, offering opportunities for sculpted landscapes, exhibition extensions, and tranquil retreats. These exterior spaces are envisioned as versatile platforms, potentially adaptable for private events. A central atrium serves as the circulatory core, guiding visitors through diverse gallery spaces.



Nighttime front view

Parti + Programming

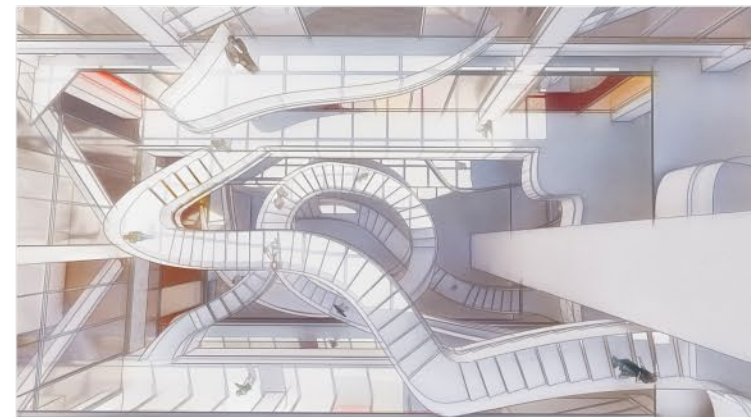
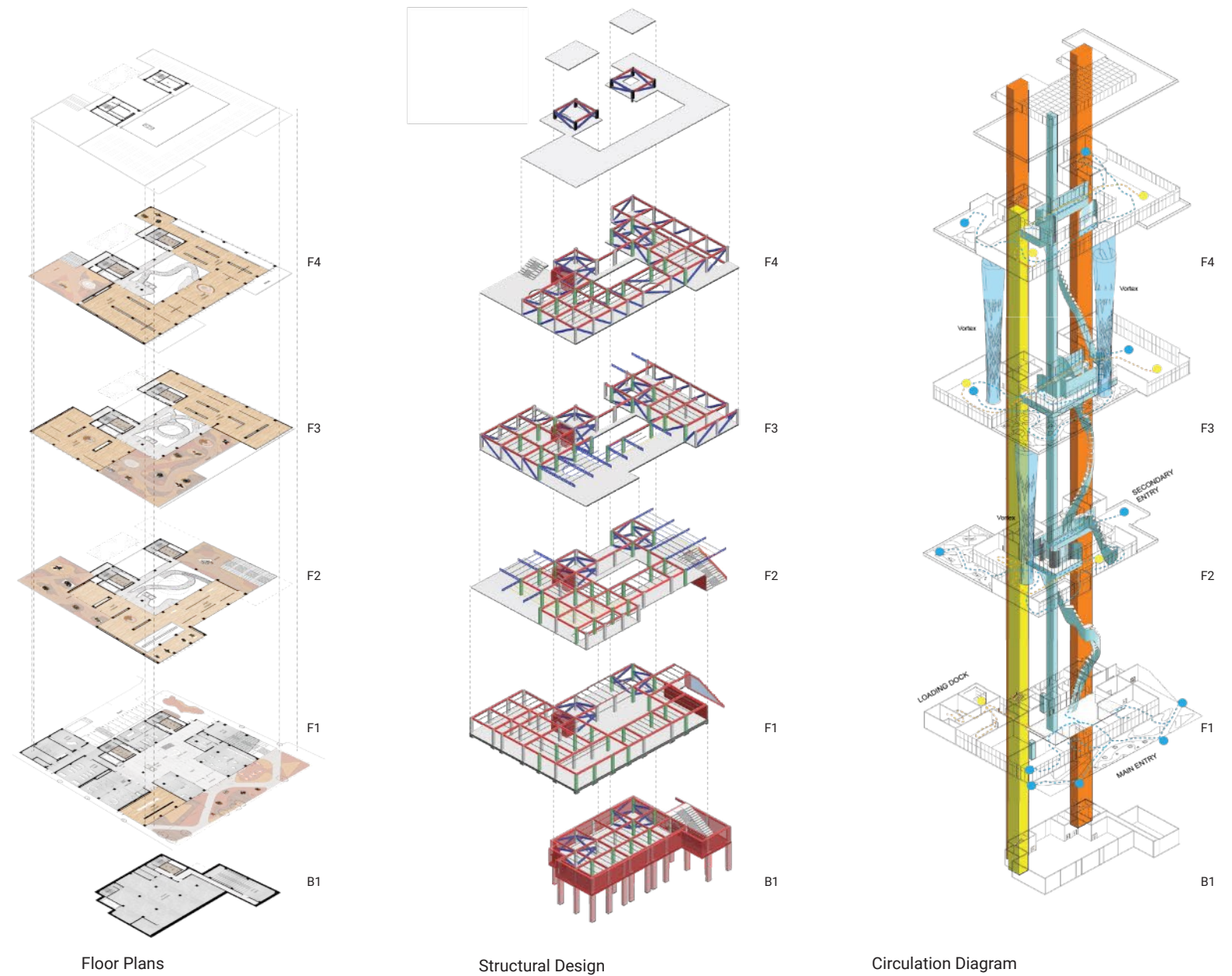


Axonometric view with site context





1st floor plan (center-top) and mezzanine floor plan



Bird's eye view of the "ribbon" staircase in the atrium



View of the "ribbon" staircase on the second floor



Land Use And Site Ecology

The project transforms a brown-field site into public space with terraces, a plaza. Rainwater is reused, and low-flow plumbing fixtures conserves water, enhancing sustainability.

Energy Use

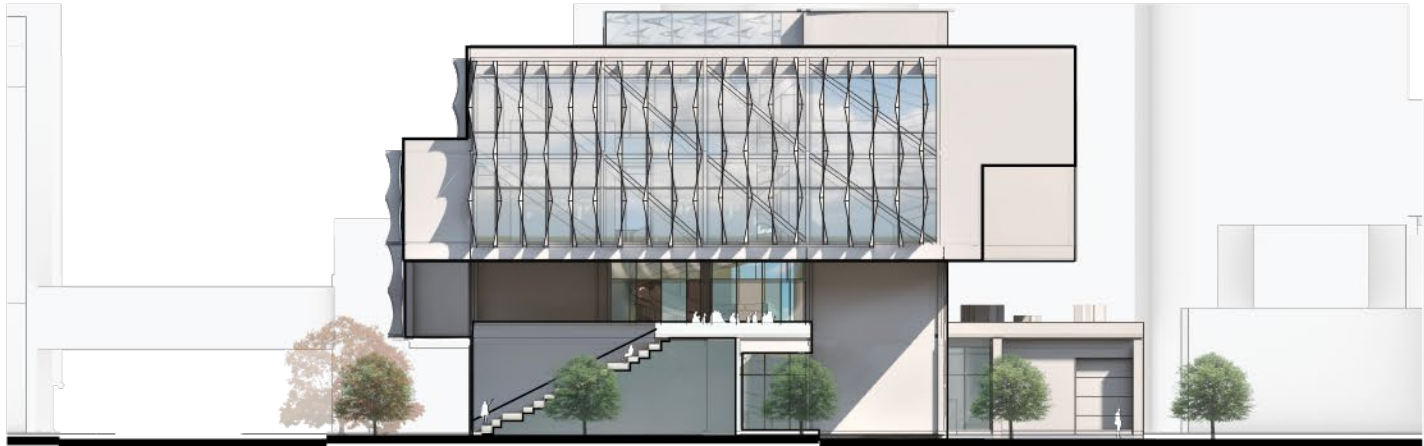
The site features photo-voltaic panels, geothermal wells, recycled materials, and soy-based insulation. A white EPDM roof reflects heat, and the building is adaptable for future use.

Community Design

The community design offers public transit access, parking, a bike lane, restaurant, shop, 24/7 outdoor spaces for socializing, and promotes cultural diversity as a new institution.



View of the grand stepped entry leading to the second floor



West elevation



East elevation



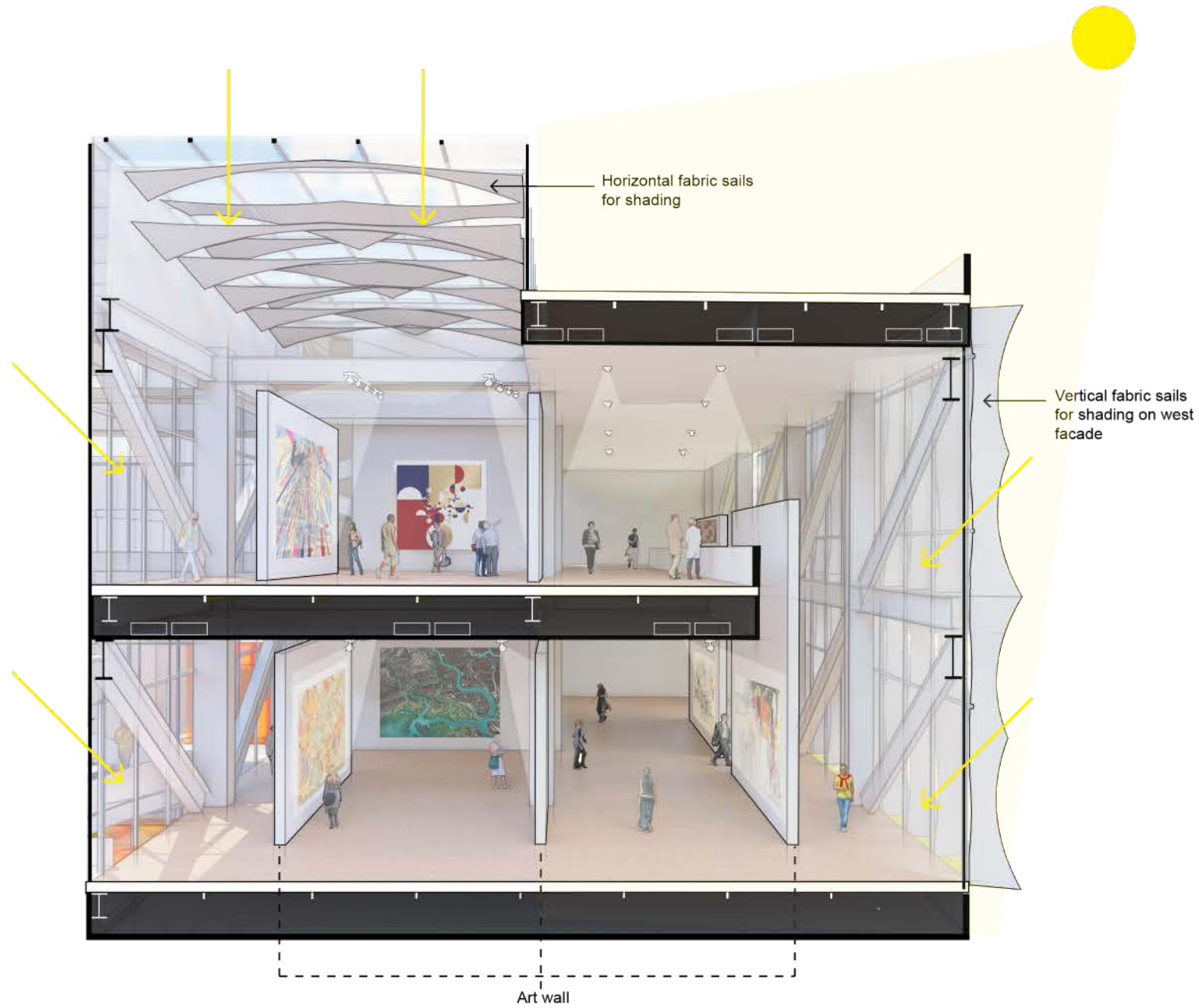
View of the “vortex” staircase linking the 3rd and 4th floor, the cloth membrane filtering the daylight.



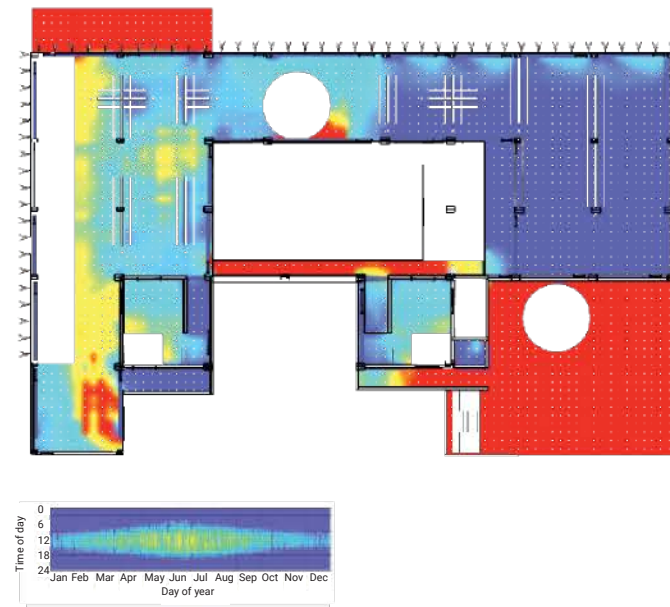
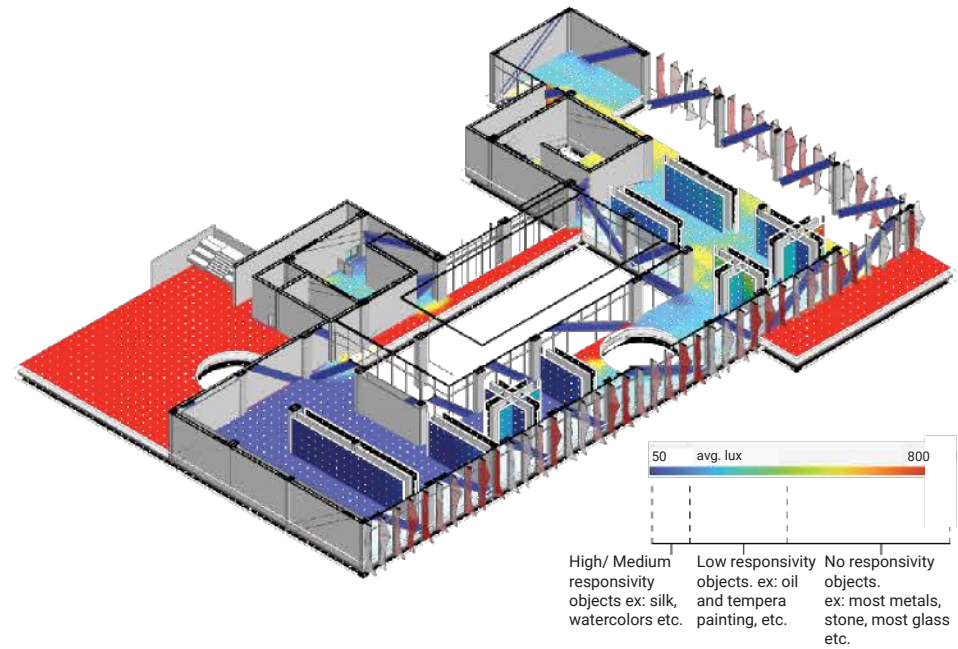
View of the “vortex” staircase linking the 3rd and 2nd



North elevation



Sectional perspective visualizing the daylighting strategy for galleries



Typical daylight analysis done for gallery



View of the outdoor sculpture gallery on the third floor



View of a typical gallery space on the third floor



Double height gallery space on first floor



View of a gallery space on the fourth floor

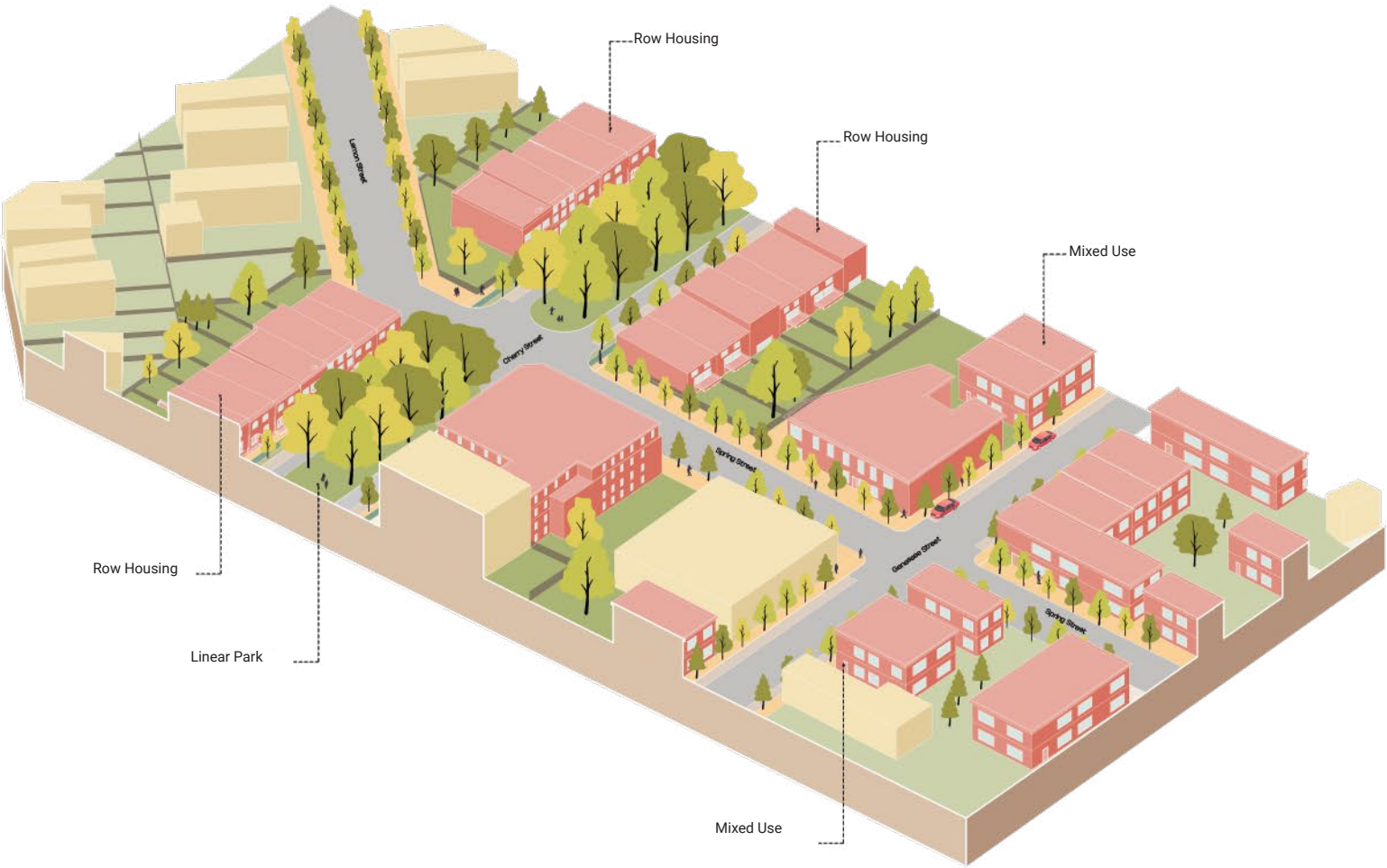


Proposed interventions in Fruit Belt neighborhood by Mayank Sharma

BIG PROJECTS STUDIO
RE-IMAGINING BUFFALO WITHOUT EXPRESSWAYS

Buffalo, New York
Academic Group Project, M.Arch
Spring 2024
Professor Gregory Delaney
Team members - Behnoush Nikparvar,
Haitain Zhang and 15 others
Software - Rhino, Auto CAD, Illustrator,
InDesign and Photoshop

Our studio developed a schematic framework to re-imagine Buffalo's future by removing the NY-198 Scajaquada Expressway and the NY-33 Kensington Expressway. The initiative responds to the pressing changes both expressways are undergoing, which have historically damaged neighborhoods by severing connections and reducing access to critical community resources. Our framework leverages the opportunities created by these removals, not only restoring Olmsted's original views and connections but also enabling new development and improved neighborhood linkages.



Transect of intersection of Cherry St., Lemon St., Genessee St. And Spring St. by Mayank Sharma

1. McCarley Gardens

New housing, mixed-use spaces, and community land lots will be developed, alongside affordable apartments and amenities like a wellness center and café. A pedestrian axis will reconnect downtown to the Fruit Belt, enhancing connectivity and development.

2. Downtown Revitalization

New housing will be developed along Goodell St., while the opposite edge will feature mixed-use and commercial spaces. Adjacent streets will be commercialized and revitalized with new development.

3. Neighborhood Healing

Cherry St. will become the Fruit Belt's signature address, featuring a focal building, a community farmer's market, and new row housing. This will create a unique identity while seamlessly reconnecting the neighborhood with Genesee St.

4. Resilient Community

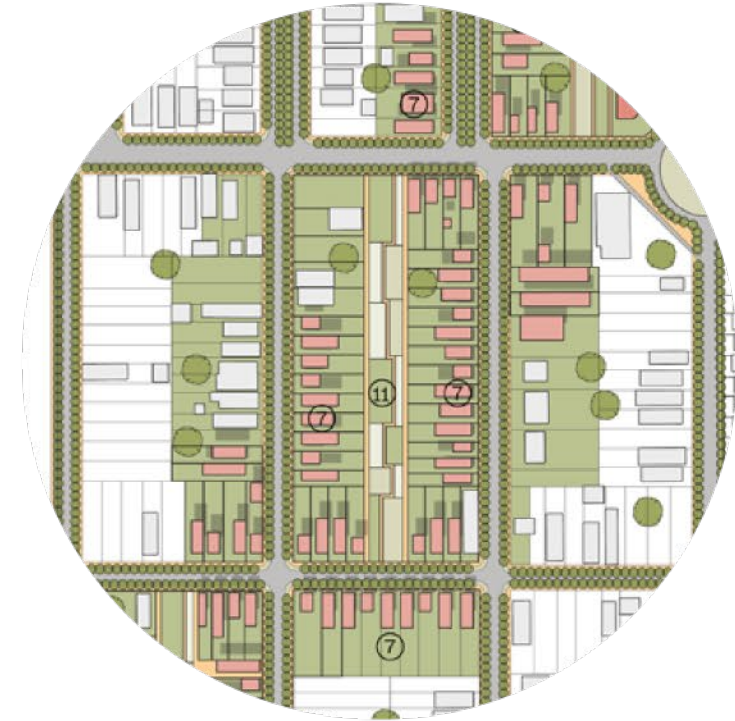
'Genessee' Park will have sports facilities and an Oak Savannah, surrounded by residential, educational, and commercial spaces. A nearby community center and library will provide resources, promote healthy lifestyles, and foster community engagement.

5. Urban Farmlands

Urban farms will address food insecurity, allowing residents to grow and sell crops at a nearby market, while a pedestrian path will strengthen neighborhood bonds and provide communal space.



Overall proposed plan for the Fruit Belt by Mayank Sharma, Behnoush Nikparvar and Haitian Zhang



Street view of Cherry St. by Mayank Sharma

Proposed View Of Cherry St.

In the revitalized Fruit Belt, Cherry St. will reconnect with Genessee St., enhancing mobility and commercial activity. As highway traffic is redirected through major roads like Genessee, Sycamore, and Broadway, Genessee St. will see increased commercial activity, supporting local businesses and mixed-use development, with potential plots reserved for the Fruit Belt Community Land Trust.



Street view of urban farming proposal by Haitian Zhang

Proposed View Of Urban Farming Concept

To address food insecurity in the Fruit Belt, we propose urban farmlands in new blocks and a food market on Cherry Street. Families can own farm parcels, sell crops for profit, and strengthen community bonds. The farmland will also serve as a park for pedestrians to enjoy leisurely strolls.



View of stables from south-east

EQUESTRIAN CENTER

HEALING THE NEIGHBORHOOD

East Side Buffalo, New York
 Academic Individual Project, M.Arch
 Fall 2022
 Professor Adam Thibodeaux
 Software - Revit, Lumion, Auto CAD,
 Illustrator, InDesign and Photoshop

The Northampton site is a storied location in Buffalo’s architectural context - not for the right reasons. The neighborhood was partitioned by the infamous Kensington expressway, leading to decay and stagnation of the area. The proposed equestrian center provides a refreshing opportunity to help heal and rejoin the east and west side. By integrating the proposed Kensington parkway design by the NYS government with the site, the equestrian center will seamlessly merge with and enhance the neighborhood’s urban fabric. It will foster opportunities for healing and attracting residents from both sides to come while providing a peaceful equine sanctuary that helps care for the community’s elders and providing educational opportunities for the youth.

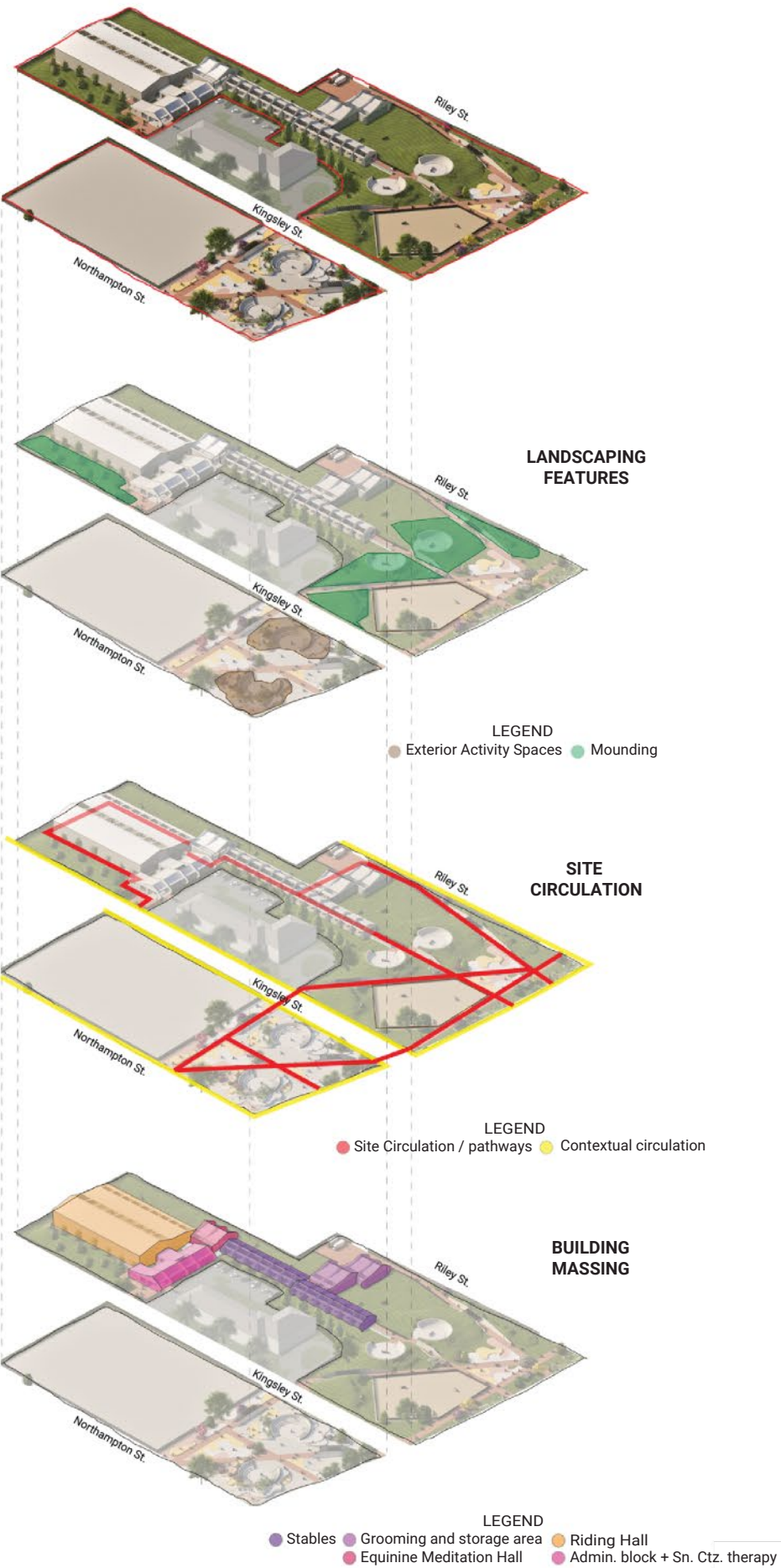
Delaying The Design

Encourages healthy interaction between humans and horses while improving neighborhood environment

Reduce building signature & street noise while provides people-centric spaces

Improves walk-ability and connects streets

Activates the street edge with equestrian and public spaces.





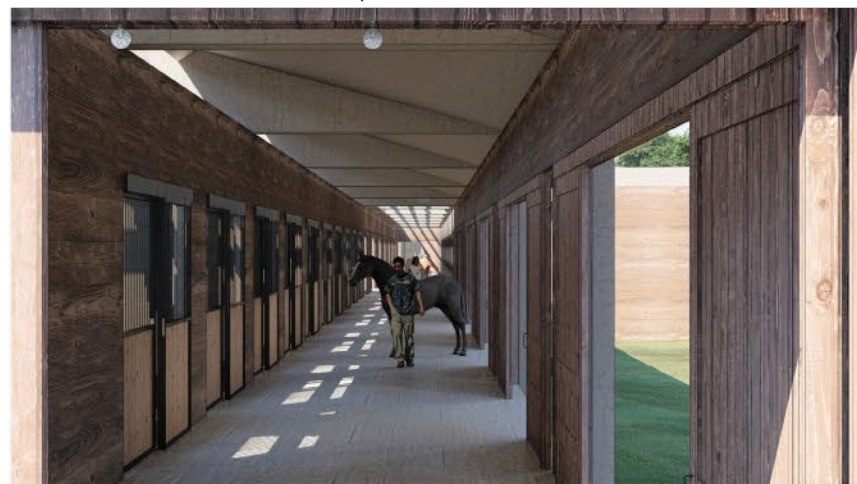
Site Plan (above) and Site Section (Below)



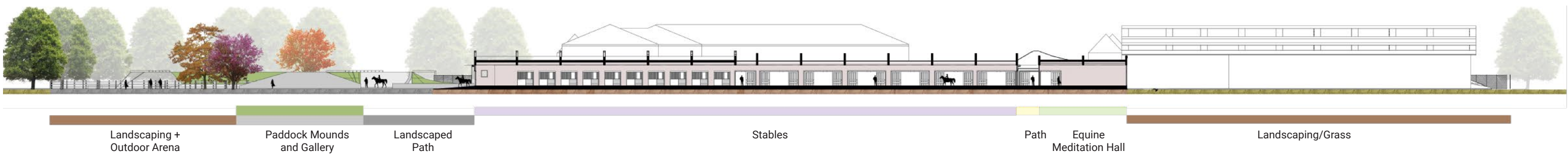
View From barn door: The north-facing slope maximizes natural light.



View of the stables from behind the paddocks



Interior view of stables



Landscaping +
Outdoor Arena

Paddock Mounds
and Gallery

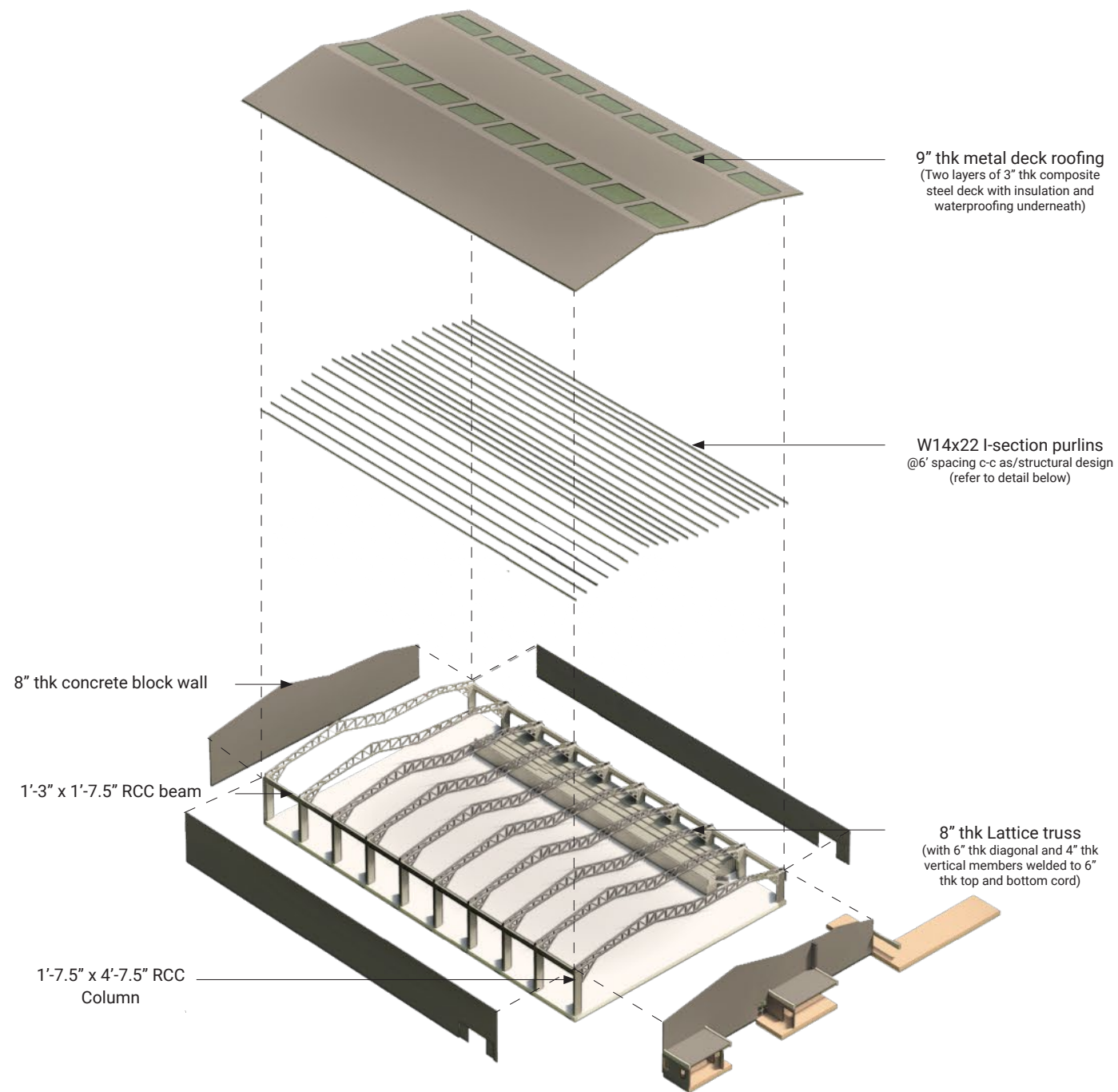
Landscaped
Path

Stables

Path

Equine
Meditation Hall

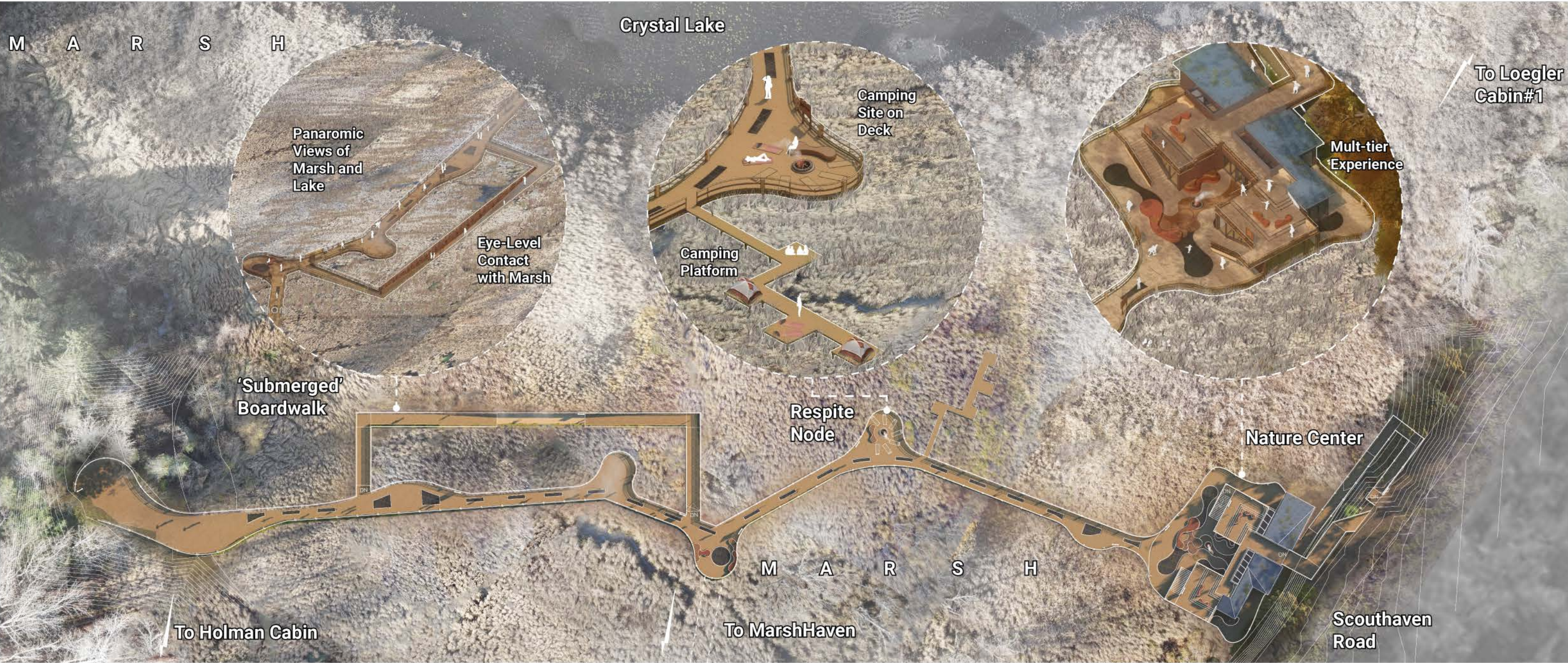
Landscaping/Grass



Axonometric diagram of the riding hall structure



View of the paddocks

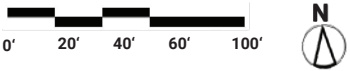


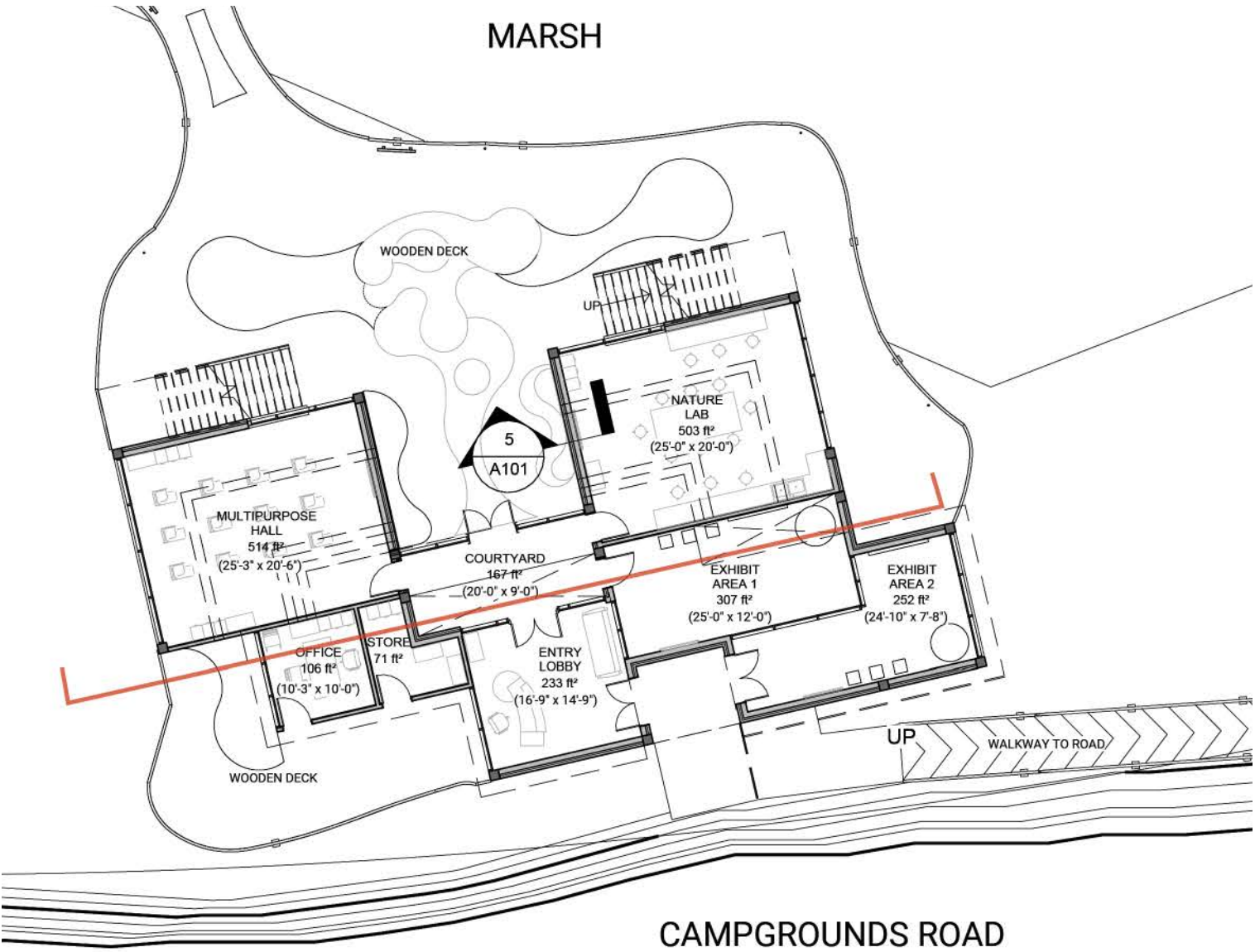
Nature center and boardwalk site plan

ECO-ELEGANCE
A NATURE CENTER AND BOARDWALK

Camp Scout-haven, Freedom, New York
Academic Individual Project, M.Arch
Fall 2023
Professor Stephanie Cramer
Software - Revit, Lumion, Auto CAD,
Illustrator, InDesign and Photoshop
and Rhino

An Intimate boardwalk in the marsh near Loegler Cabin #1, offering scouts and visitors an immersive experience with the ecosystem. The 8 feet wide boardwalk, constructed from on-site timber, follows natural contours, with platforms for observation and ADA accessibility. Additionally, a nature center, strategically located at the marsh edge, introduces visitors to the ecology, featuring a subdued profile that seamlessly connects to a boardwalk on the roof, enhancing the overall experience.

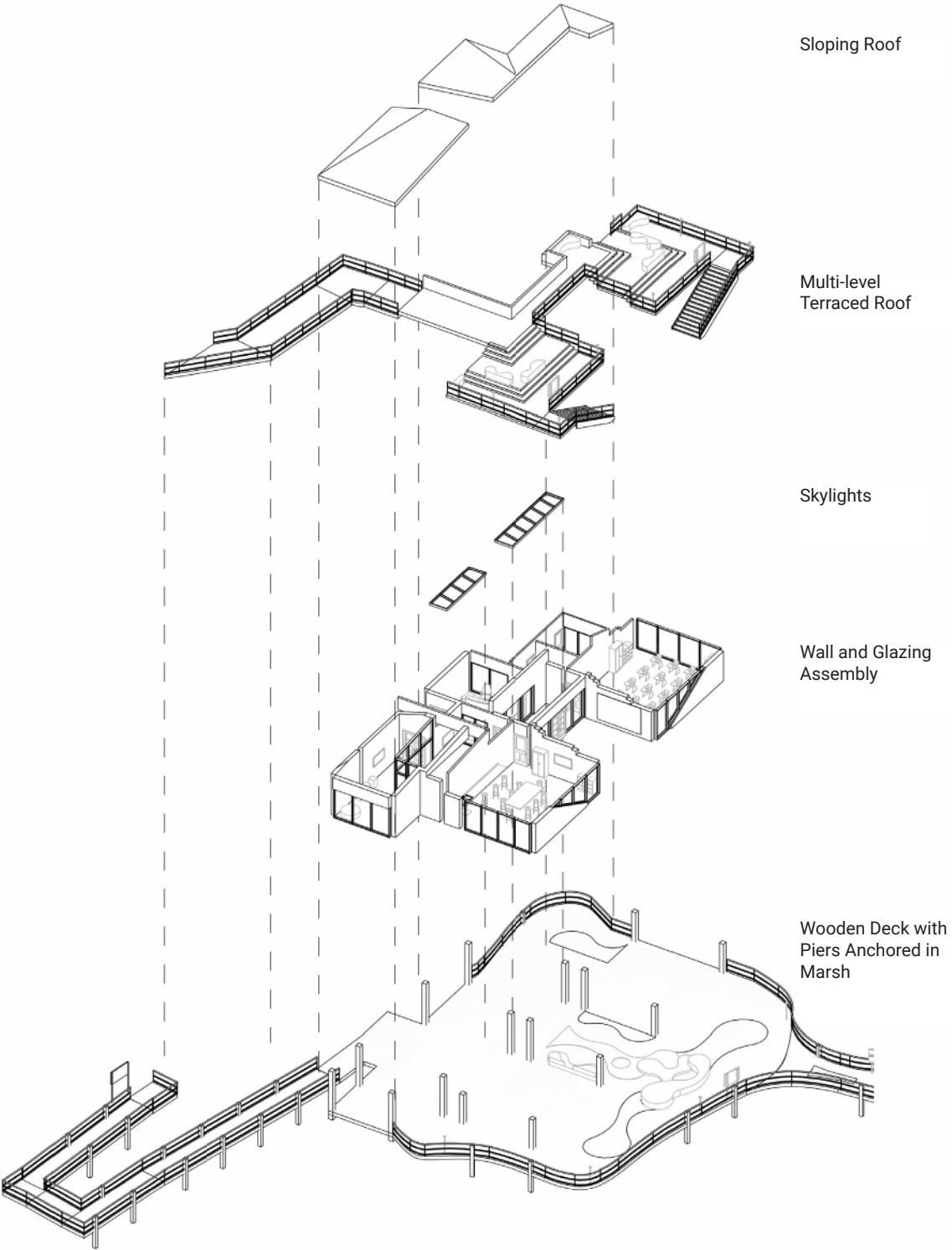




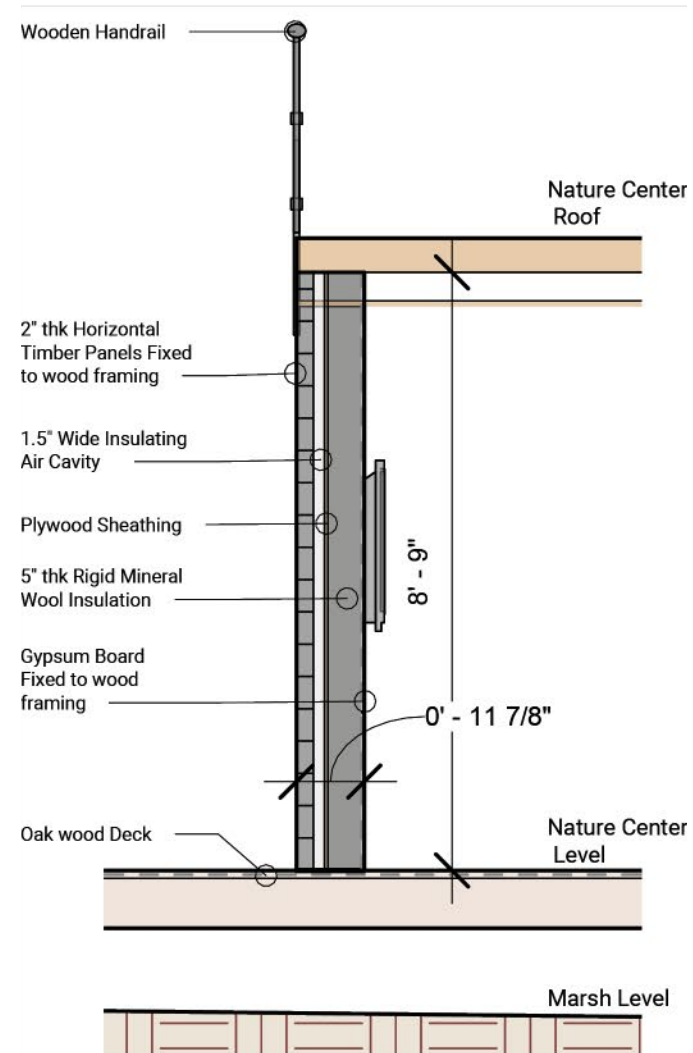
Nature center floor plan



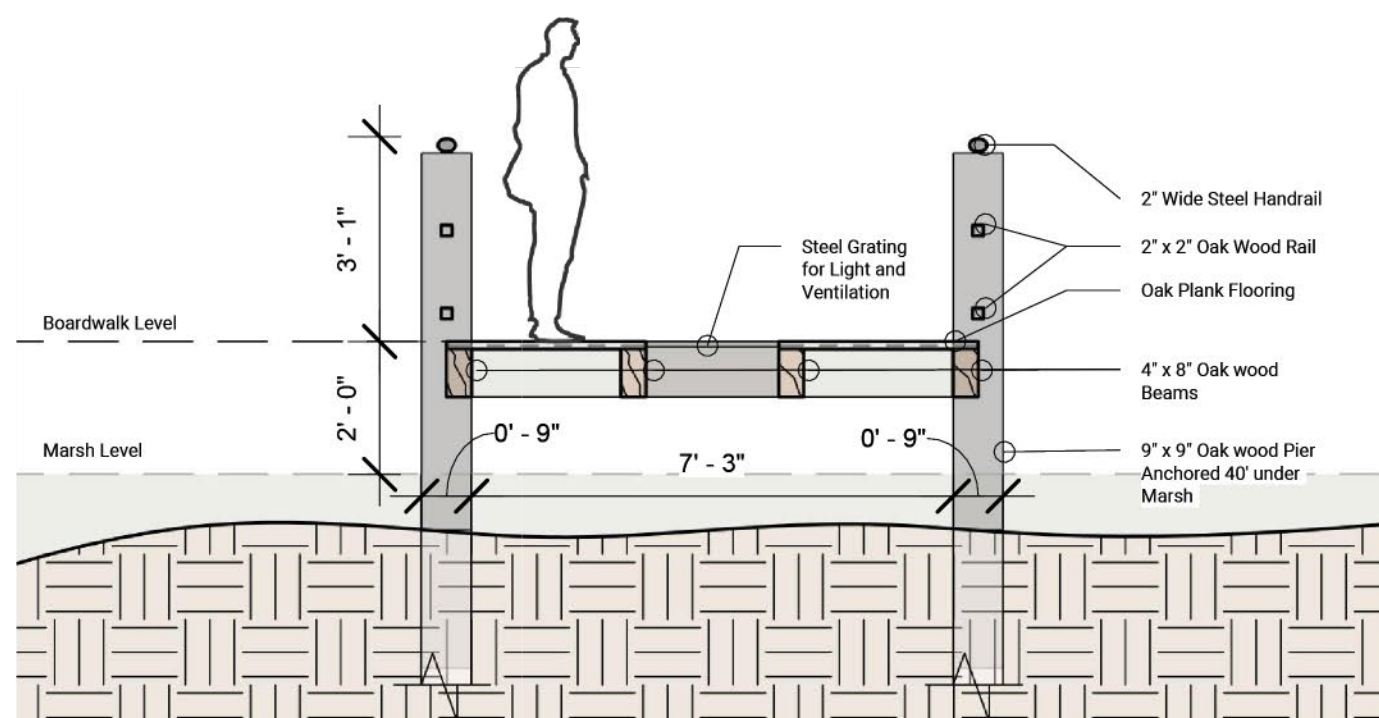
West facing elevation



Exploded axonometric diagram of nature center



Wall section detail



Boardwalk section detail



Stepped Transition - the nature center steps down level by level from the campground level to marsh level, facilitating dynamic views while respecting the natural skyline.



Exhibit Area - With two exhibit areas, the well lit nature center has a flexible functionality w.r.t seasons.



Classroom - the stepped roof with skylights between the risers creates a dynamic lighting scheme



Multi-level Roof - The stepped roof gives multiple vantage points of the marsh at different levels while also offering a seamless transition from road to marsh.



A Deliberate Subdued Profile - The nature center is constructed at marsh level, with the boardwalk starting over it on the roof and stepping down to the marsh.



A forced perspective physical model showing a plan view of the design with the nature center. The model showcases the subdued yet distinctive presence of the structure within the textures of the marsh.



A forced perspective physical model showing a section of the nature center. The different levels step down one by one, taking the visitor from the campgrounds down to the boardwalk level while using the roof as a panoramic viewing platform.



View of front entrance staircase from street level

BRIDGING THE DIVIDE

UNIVERSITY AT BUFFALO'S CULTURAL CAMPUS IN MADRID

Universidad Pontificia de Salamanca,
 Madrid, Spain
 Academic Project, M.Arch
 Summer 2024
 Professor Miguel Guitart
 Team members - Melissa Kelley
 Software used - Revit, Lumion, InDesign
 and Photoshop

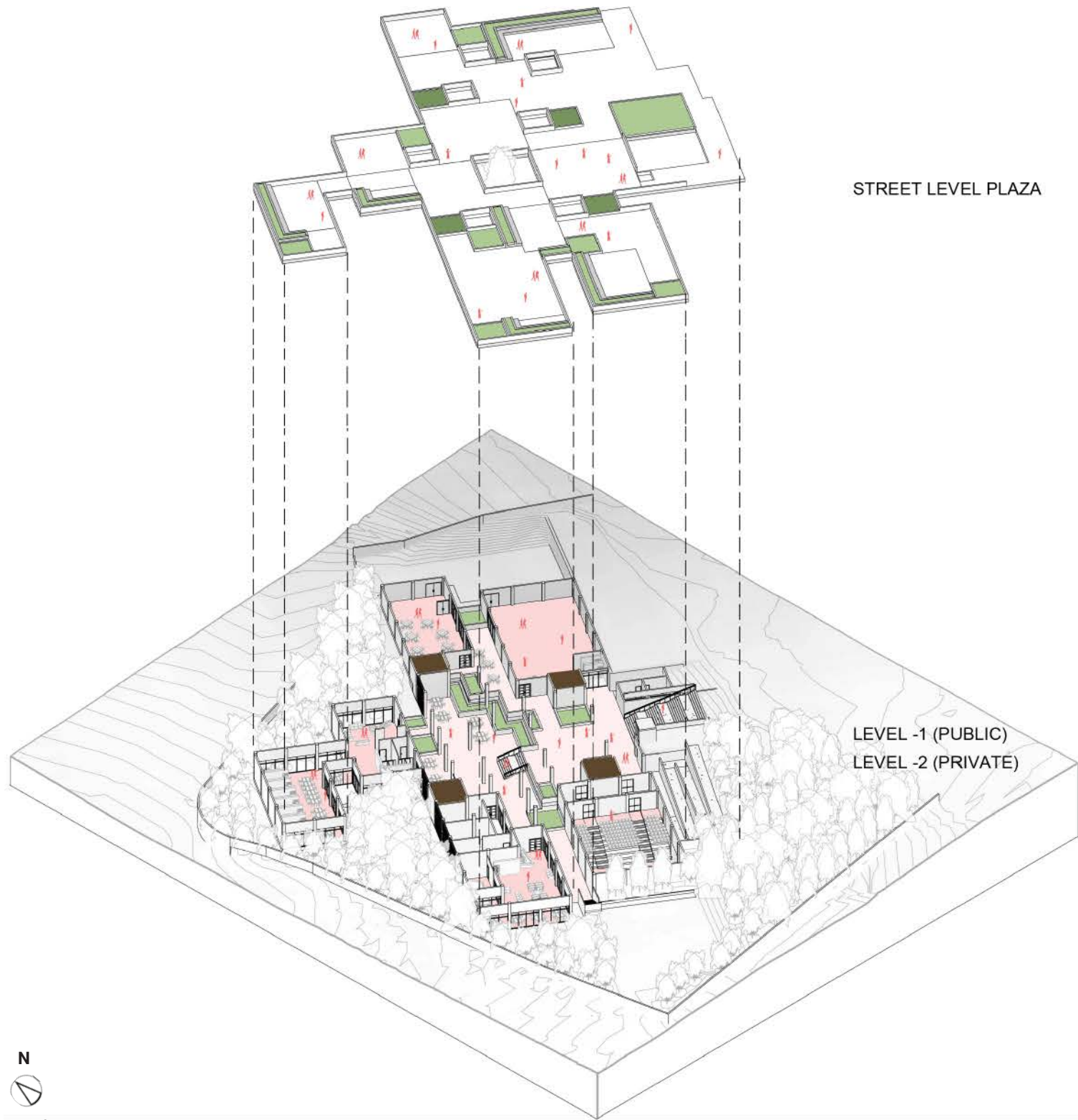
University at Buffalo's Cultural Campus in Madrid, themed "Bridging the Divide," organizes multi-level public plazas. The ground-level plaza offers open space for connection, while the below-ground level features skylights for natural light. The program separates public and private spaces, serving both the public and university students. Inspired by precedents like the Apple Store in NYC and Magok Central Plaza, the design connects landscapes and activities across multiple levels. Drawing from Spain's Moorish heritage, elements of the Kasbah, with covered alleyways, courtyards, and lush planters, reflect the influence of buildings like the Alhambra.



Daytime view showing the visual interaction of the two plazas via the cutouts



An axonometric view showing the building w.r.t its site context



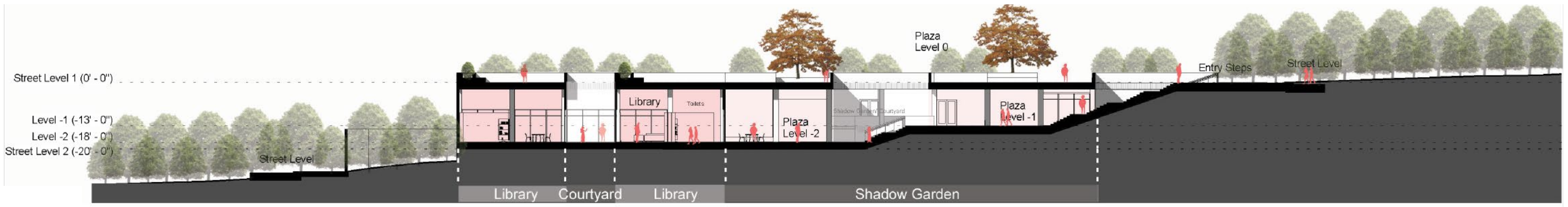
View of Front Entrance Staircase From Street Level

Granite floors are locally sourced and representative of the city's architectural character. Arrangement of squares accompanied by planters and benches creates moments of community and opportunities for diverse events. Courtyards perforate the roof and channel light and ventilate the plaza below. Placement of accessibility through staircase, ramps, and elevators along the central axis. A clear division of public and private spaces along the north-south axis. Shadow gardens and courtyards bridge the divide between the different programs.





Section 2 - East-West Axis



West Elevation



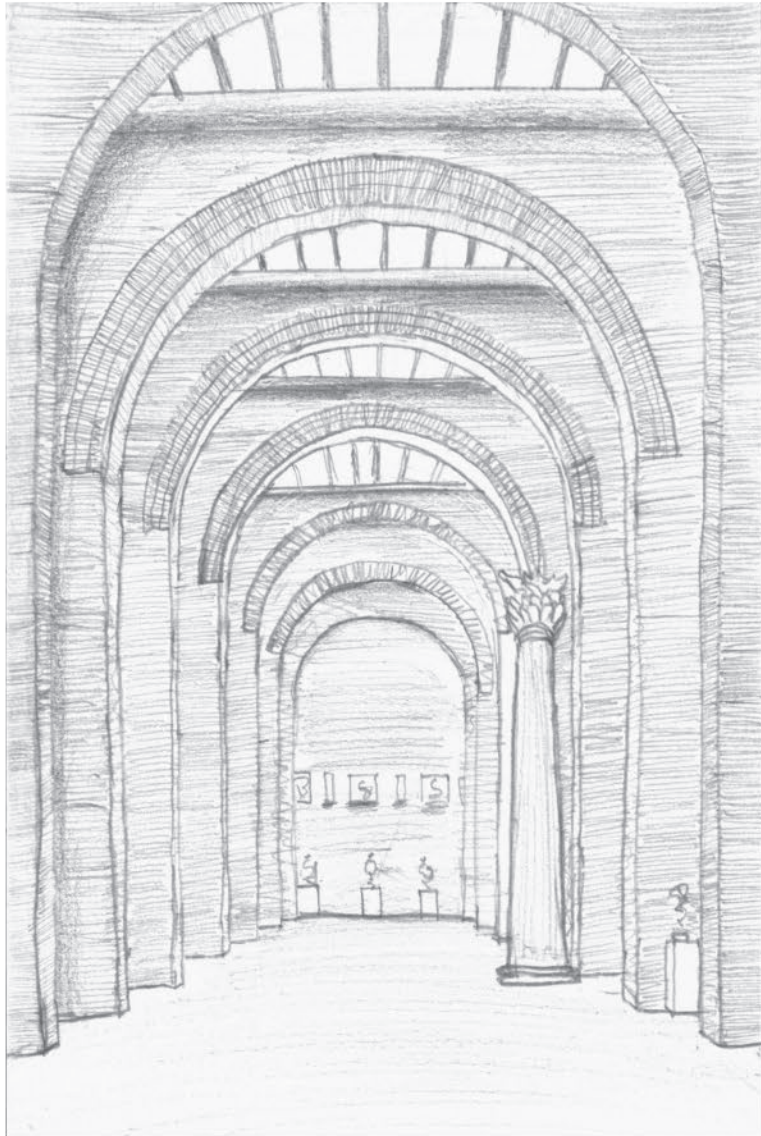
View of stairs



View of library - reading vestibule



View of Level -2



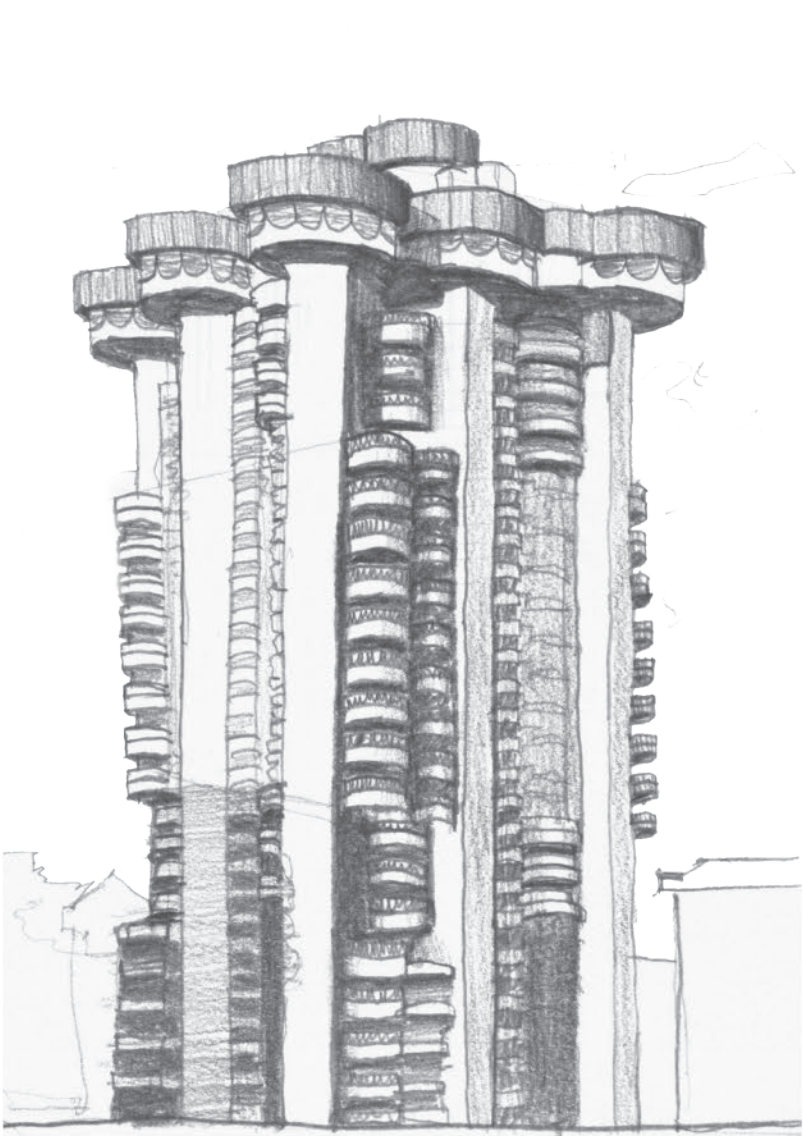
National Museum of Roman Art - Rafael Moneo



Banco de Bilbao Tower - Javier Sáenz de Oiza



Valencia Tower - Javier Carvajal Ferrer



Torres Blancas - Javier Sáenz de Oiza

SKETCHING SPANISH MODERNISM
UNIVERSITY AT BUFFALO STUDY ABROAD IN MADRID

Spain
Academic Project, M.Arch
Summer 2024
Professor Miguel Guitart
and Israel Alba

The aim of this exercise was to introduce and familiarize students in the study abroad program with the evolution, history and examples of Spanish Modernist architecture. During this 1.5 month long excursion in Spain, we traveled across the country to see examples of Spanish architecture by the modernist masters.



Winter daytime front view from street intersection

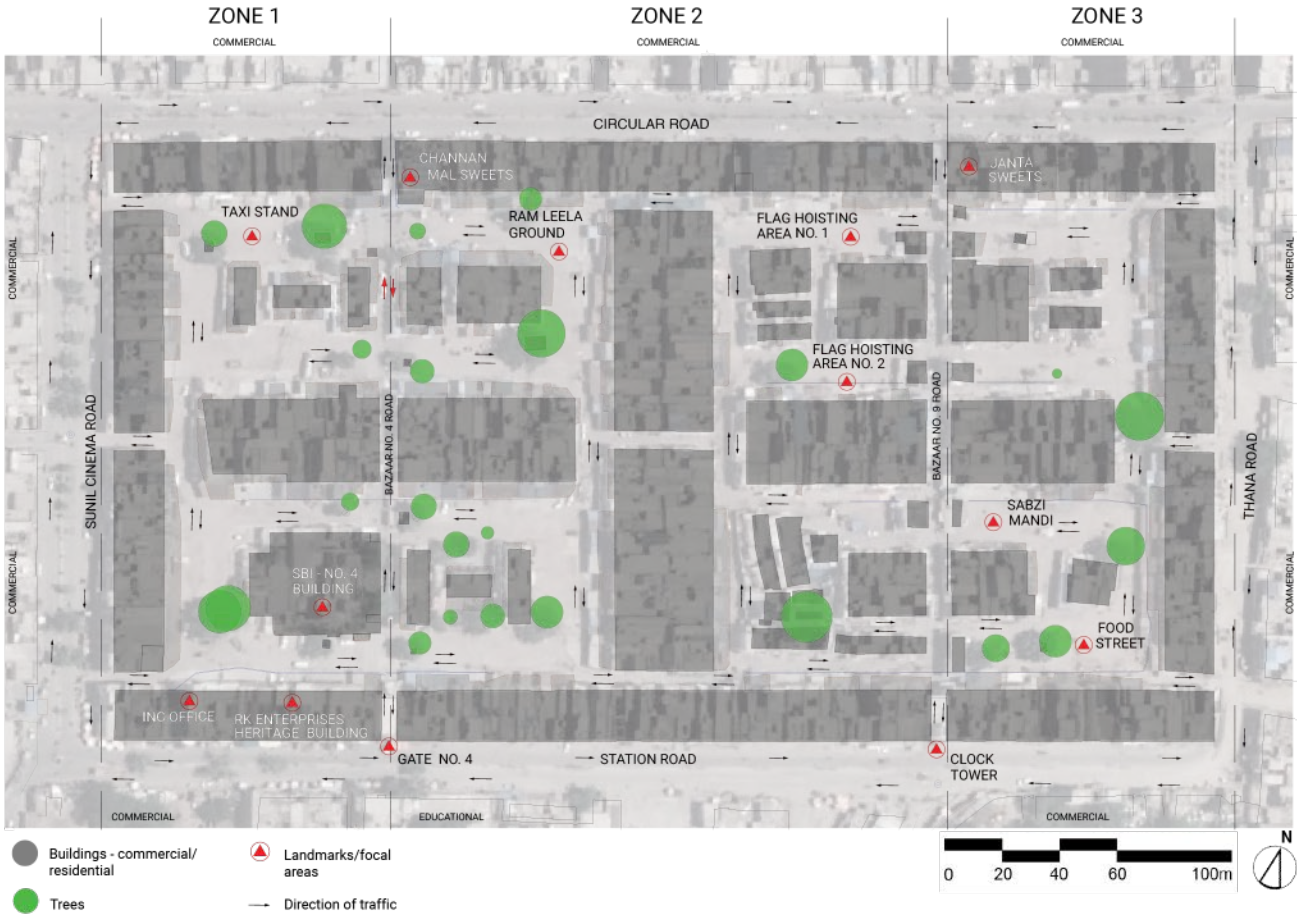
A REVITALIZED ABOHAR MANDI

URBAN DESIGN PROJECT
PROJECTS WITH AR. DEEPANSHU GARG

Abohar Mandi, Abohar, Punjab
Professional Work, Prinicipal Architect
January 2021- Ongoing
Client: Abohar Municipal Corporation
Team Members: Ar. Deepanshu Garg
Software used - Auto CAD, Sketchup,
Lumion, Illustrator, InDesign and
Photoshop

Abohar is a town in Punjab that has a rich and proud cultural past. This is no more evident than in the Mandi - 'big market' in Hindi and Punjabi - located in the heart of the town. This site was once a booming symbol of Abohar's cotton industry till the late 1960's. After the decline of its industry after the 1970's, the Mandi's condition deteriorated. After consultation with the local municipal corporation, we took up the project to revitalize the nascent urban character of this site.

Site Analysis



LACK OF SERVICES AND ENCROACHMENT
Encroachments are a perpetual menace and function as pseudo-pedestrian spaces in the absence of people-friendly spaces. Services and drainage are exposed.

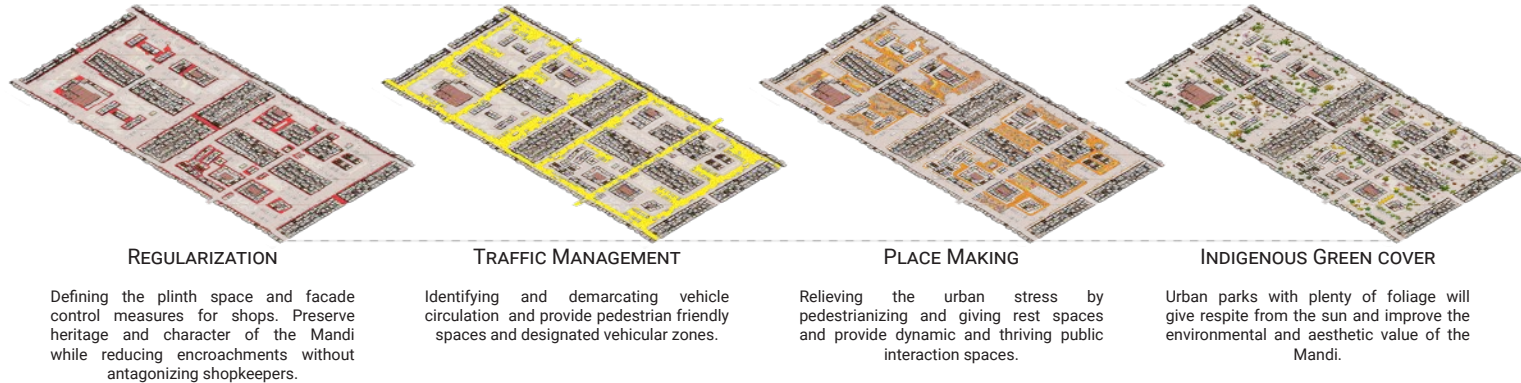


NO GREEN COVER AND PEOPLE-CENTRIC PLACES
There are very minimal trees and greens in the Mandi. The wide streets are in bad shape. The streets waste their potential as Catalysts of social interaction.



CHAOTIC AND UNSAFE TRAFFIC
There is no coherence and structure in the traffic flow. Pedestrians are forced to share space with vehicles.

Delaying The Required Interventions



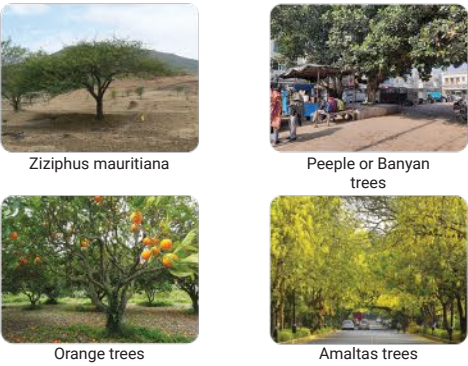
Proposed Design With Interventions



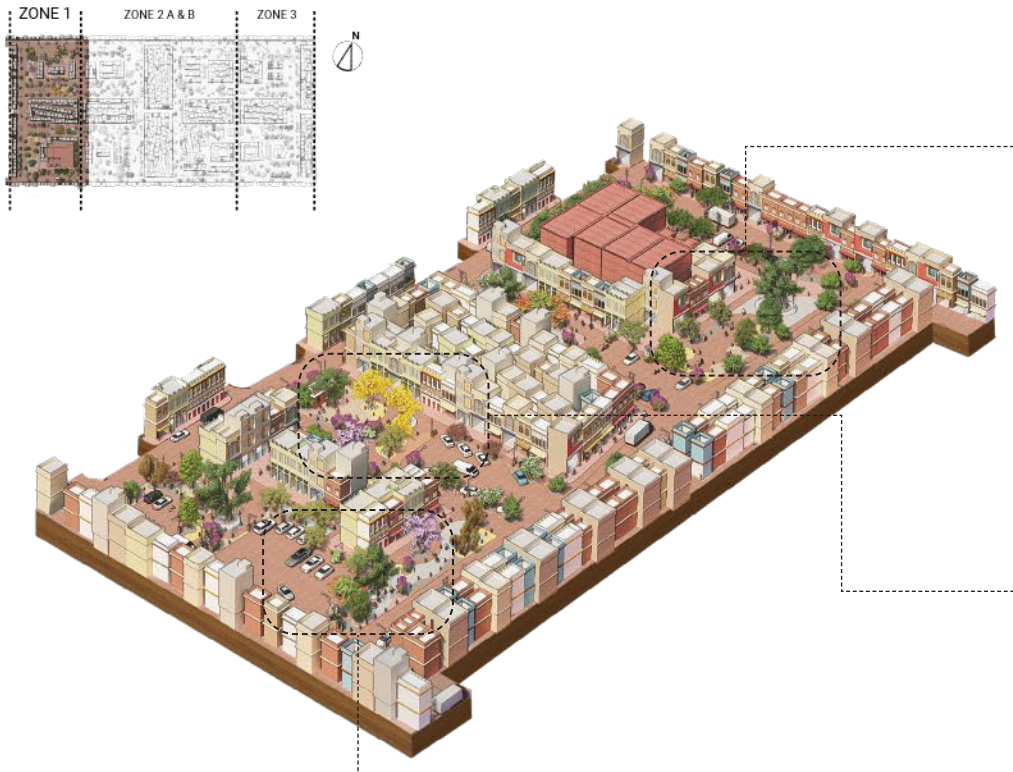
Material Palette



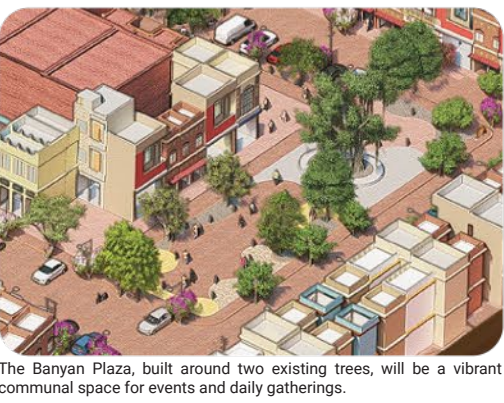
Local Tree Species



Zone 1



Banyan Plaza



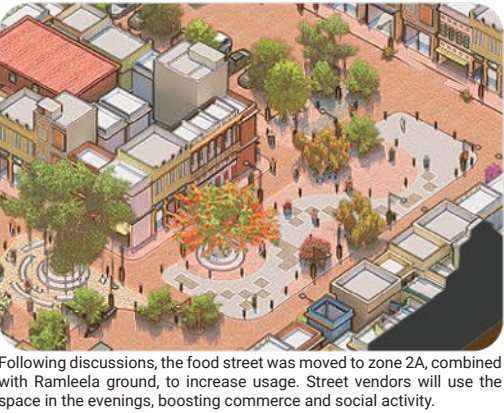
Spaces For All



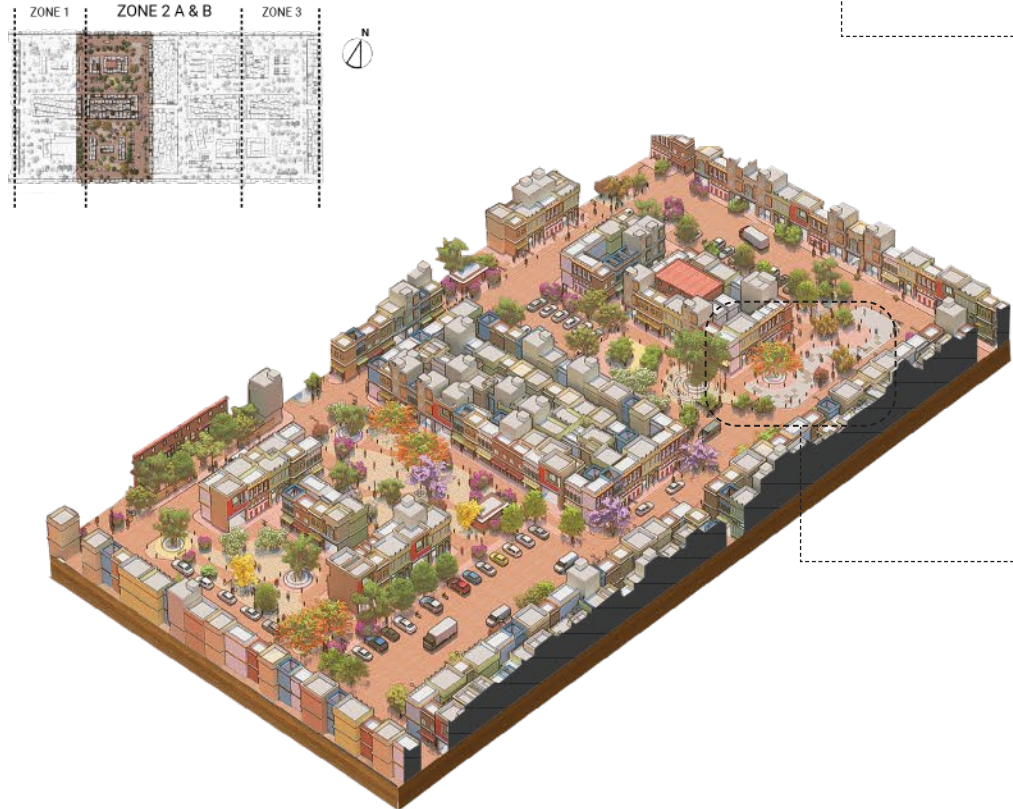
Taxi Stand



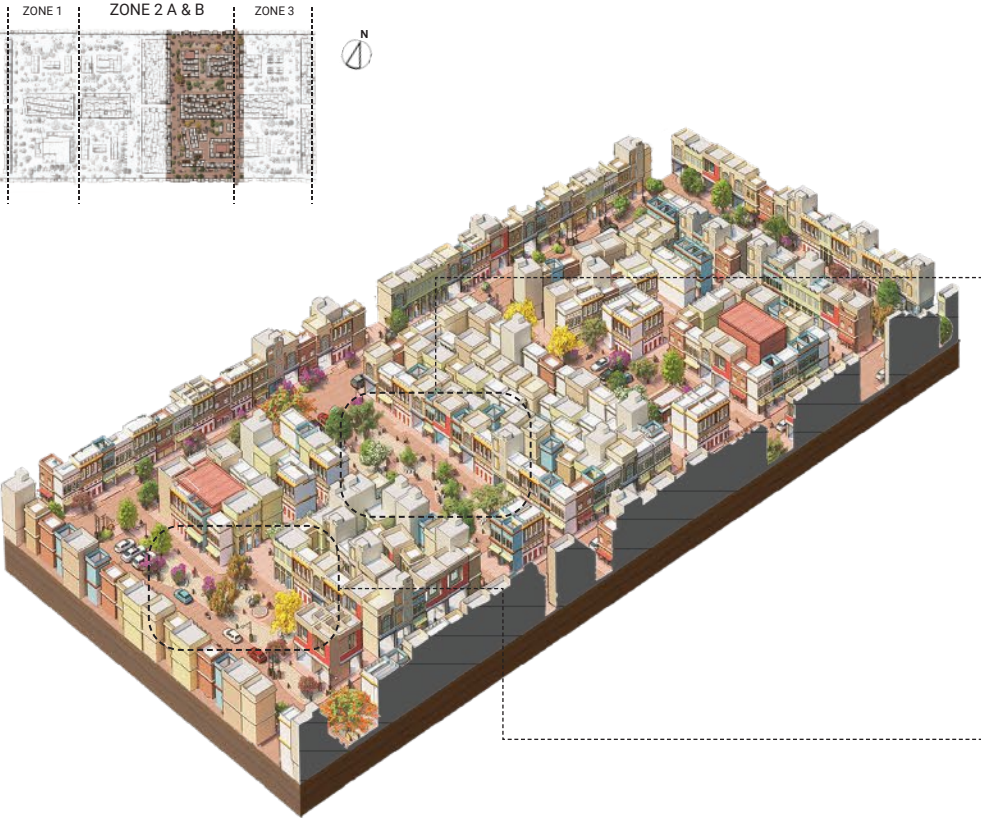
Ramleela Ground And Food Street



Zone 2A



Zone 2B



Flag Hoisting Area No.1



The flag hoisting areas remain unchanged but are upgraded with clear zoning and vehicle prohibition.

Flag Hoisting Area No.2



When not used for national events, these spaces will serve as recreational hubs, promoting public welfare and community engagement.



View Of the plaza in Zone 2A

Zone 3



Sabzi Mandi (Farmer's Market)



The space will operate like the Ramleela ground, hosting vegetable vendors multiple times a week, with ample vendor areas and tree-shaded zones during peak summers.



View Of the banyan plaza



View of pedestrianized streets and traffic segregation



View Of plaza in zone 1



View of Ramleela Ground

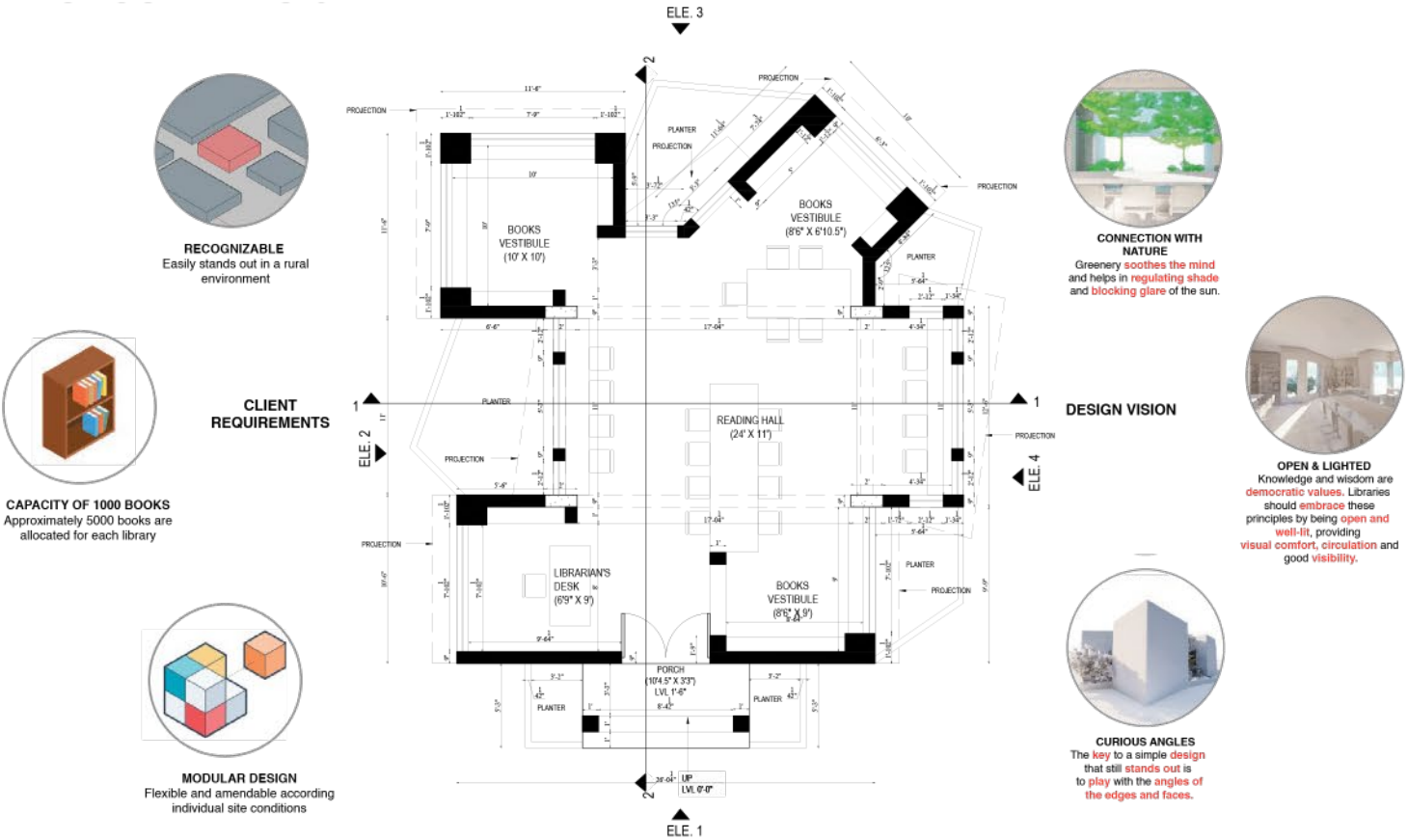


Axonometric Plan of Library Template

REACHING THE GRASSROOTS MODULAR LIBRARY TEMPLATE PROJECTS WITH AR. DEEPANSHU GARG

Bathinda District, Punjab
Professional Work, Principal Architect
January 2021
Client: Bathinda Municipal Corporation
Team Members: Ar. Deepanshu Garg
Software used - Auto CAD, Sketchup, Lumion, Illustrator, InDesign and Photoshop

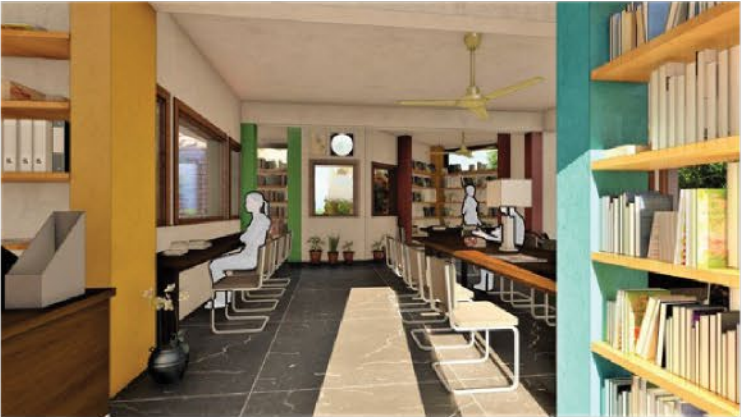
Bathinda is the fifth largest city in the state of Punjab. The city is a provider of good quality education in the district and the rural countryside. However, there has been glaring lack of study spaces for students and aspirants for government jobs. Bathinda's municipal corporation identified this issue and envisioned a goal of building hundreds of public libraries throughout the entire district. We were contacted by the municipal corporation and we subsequently took up the project to create an ideal template for their objective.



Section of library



View of reading area and cubicles



View of reading area from entry foyer



Nighttime Main Entrance View

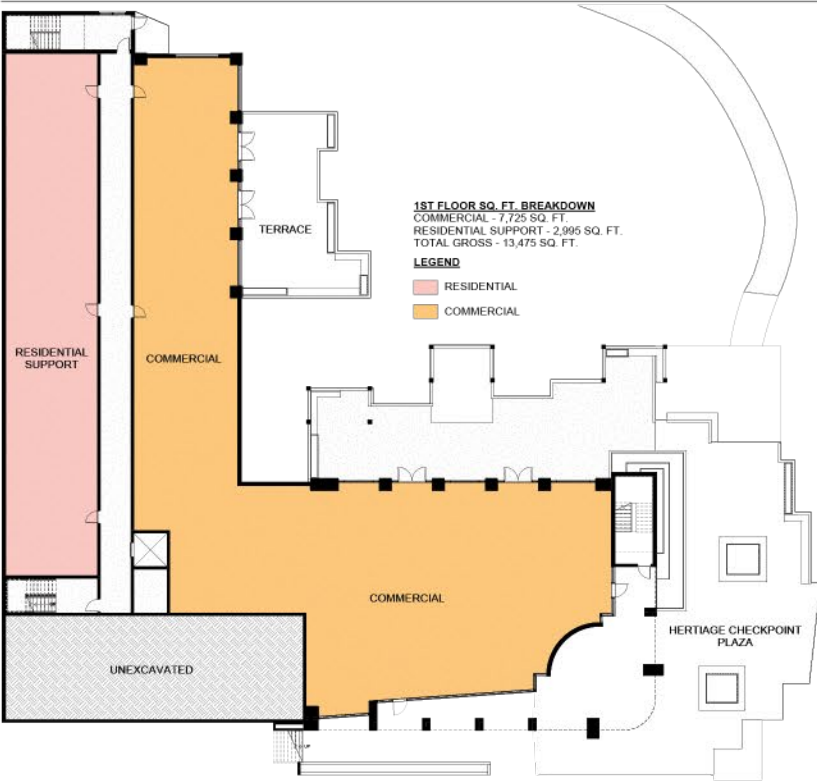
RUPAL HOSPITALITY
MIXED USE DEVELOPMENT
KIDENEY ARCHITECTS

Niagara, New York
Professional, Internship
Summer 2023 - Spring 2024
Software used - Revit, Twin-motion

Rupal Hospitality is a developer based in Niagara city. They envisioned a grand mixed used development that would be situated at a strategic crossroad junction of Buffalo avenue and 1st Street, leading over the bridge to Goat Island. The development will promote a new face of Niagara city, one that is dynamic, warm and enterprising with its panoramic facade celebrating heritage with its classic mansard roof, quaint brick exterior while incorporating contemporary elements like metal plated ceilings and a modern plaza connecting the street to the parkway below. The first floor is primarily a commercial space for showrooms while the upper floors provide numerous residential options.



South-west exterior elevation



First Floor Plan



Typical floor plan from 2nd to 4th floors



View of Rear Hardscaped Plaza



View of building from park side



View from Goodyear and Broadway streets (top) and View from Titus and Broadway streets (above)

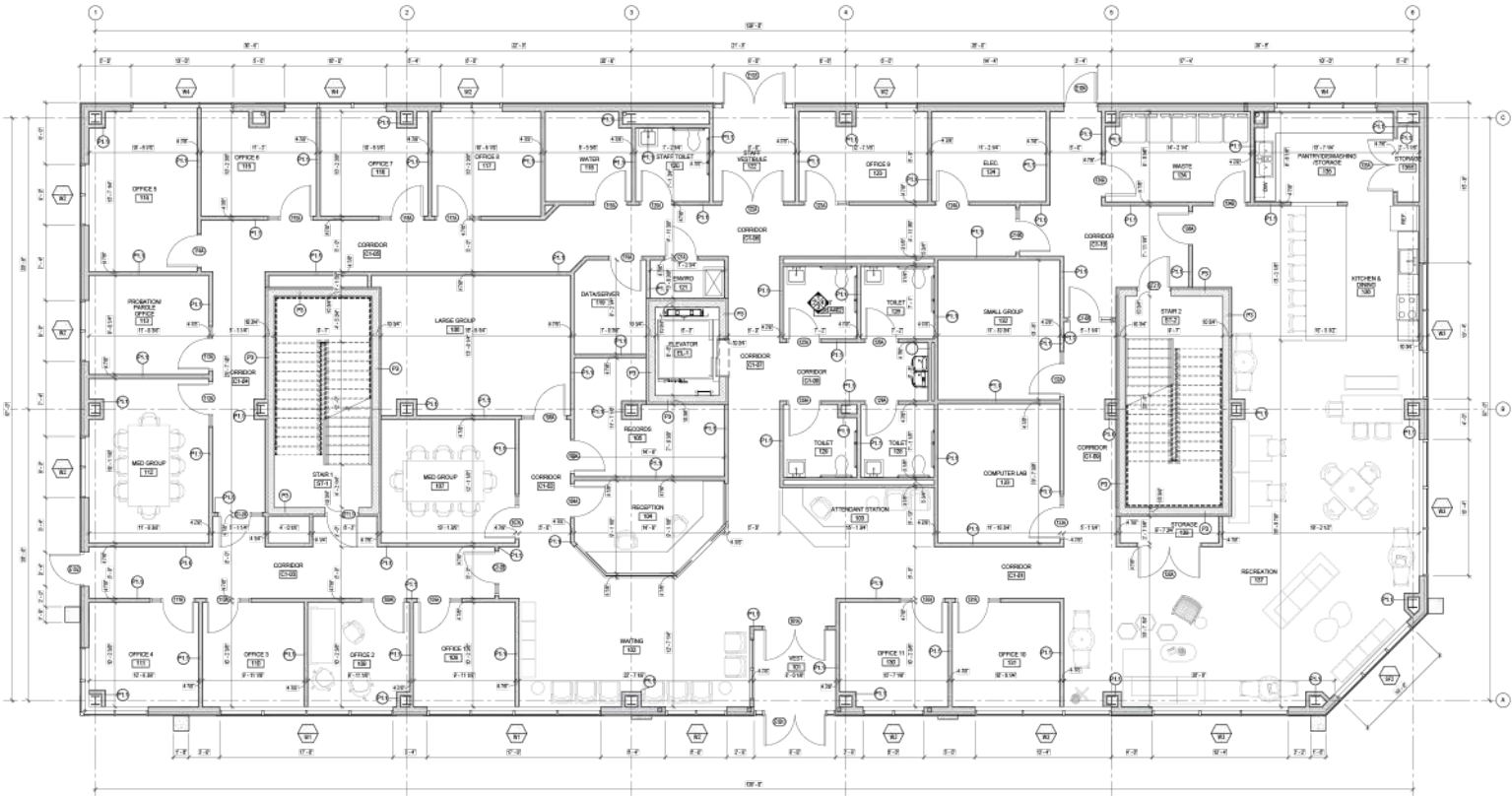
ENDEAVOR HEALTH BROADWAY

A MENTAL WELLNESS INSTITUTION

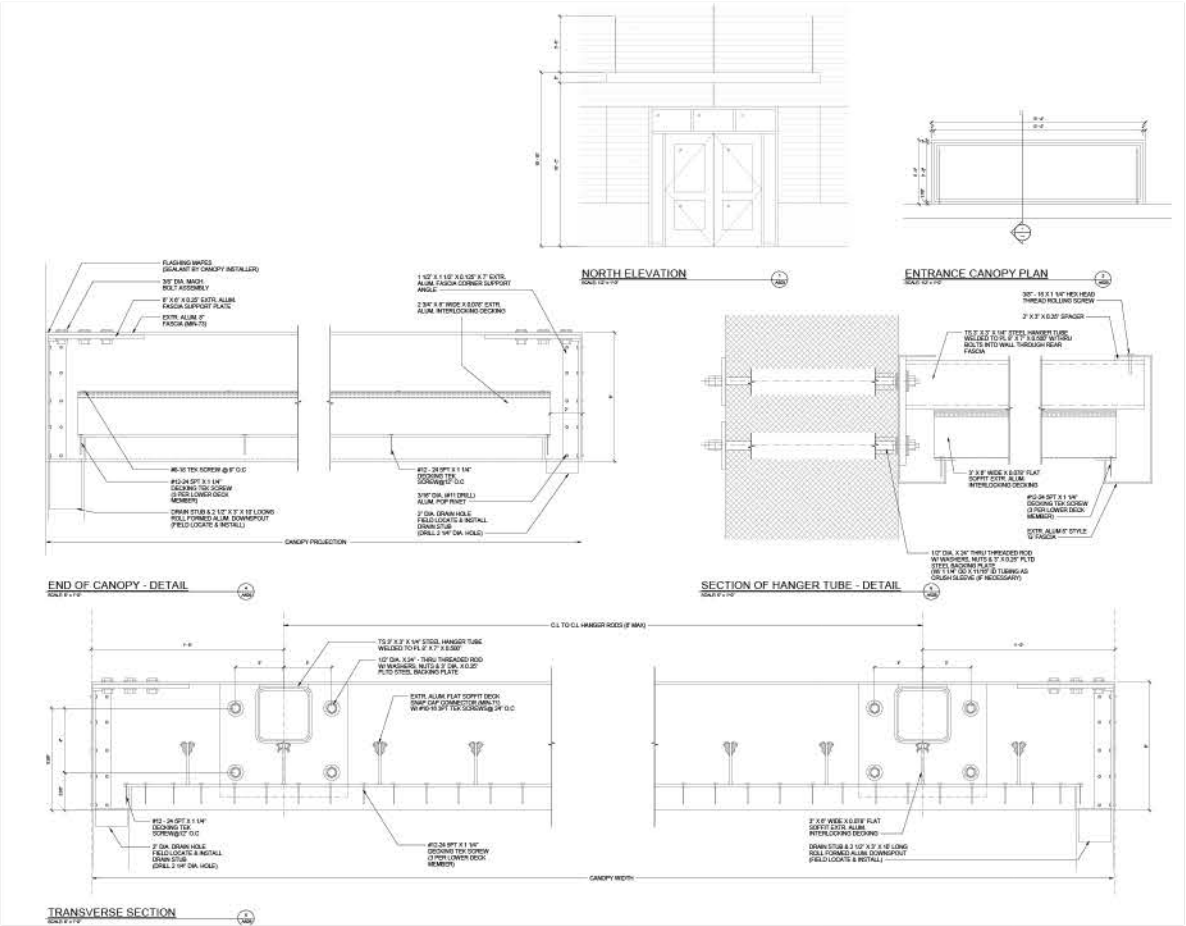
KIDENY ARCHITECTS

Buffalo, New York
Professional, Internship
Summer 2023 - Spring 2024
Software used - Revit

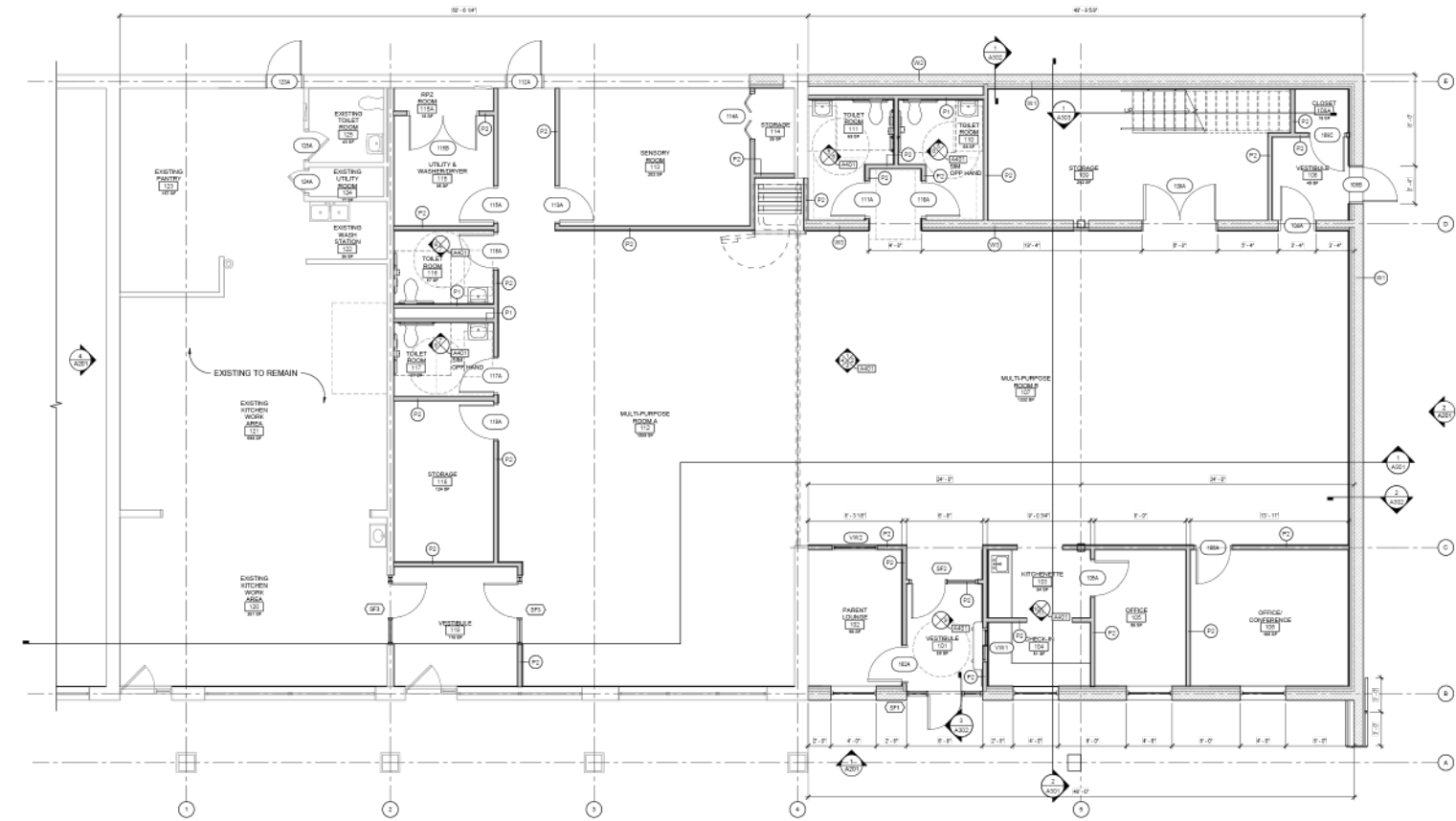
The Endeavor Health institution based in and around Buffalo wished to establish a presence for its patients on the East side of Buffalo that would not only provide a holistic, safe and inviting place for clients and patients, but also respect the local building heritage and become a landmark in the neighborhood on Broadway street. Several iterations for the facade were developed out of which the above was selected, with its brick exterior combined harmoniously with aluminum composite panels. The chamfered edge on the intersection of Broadway and Goodyear streets presents a highly visible entry point while the brick patterns above the lintels, borrowed from local and traditional buildings, add a old world charm to the facade.



First Floor Plan



Entrance Canopy Construction Details

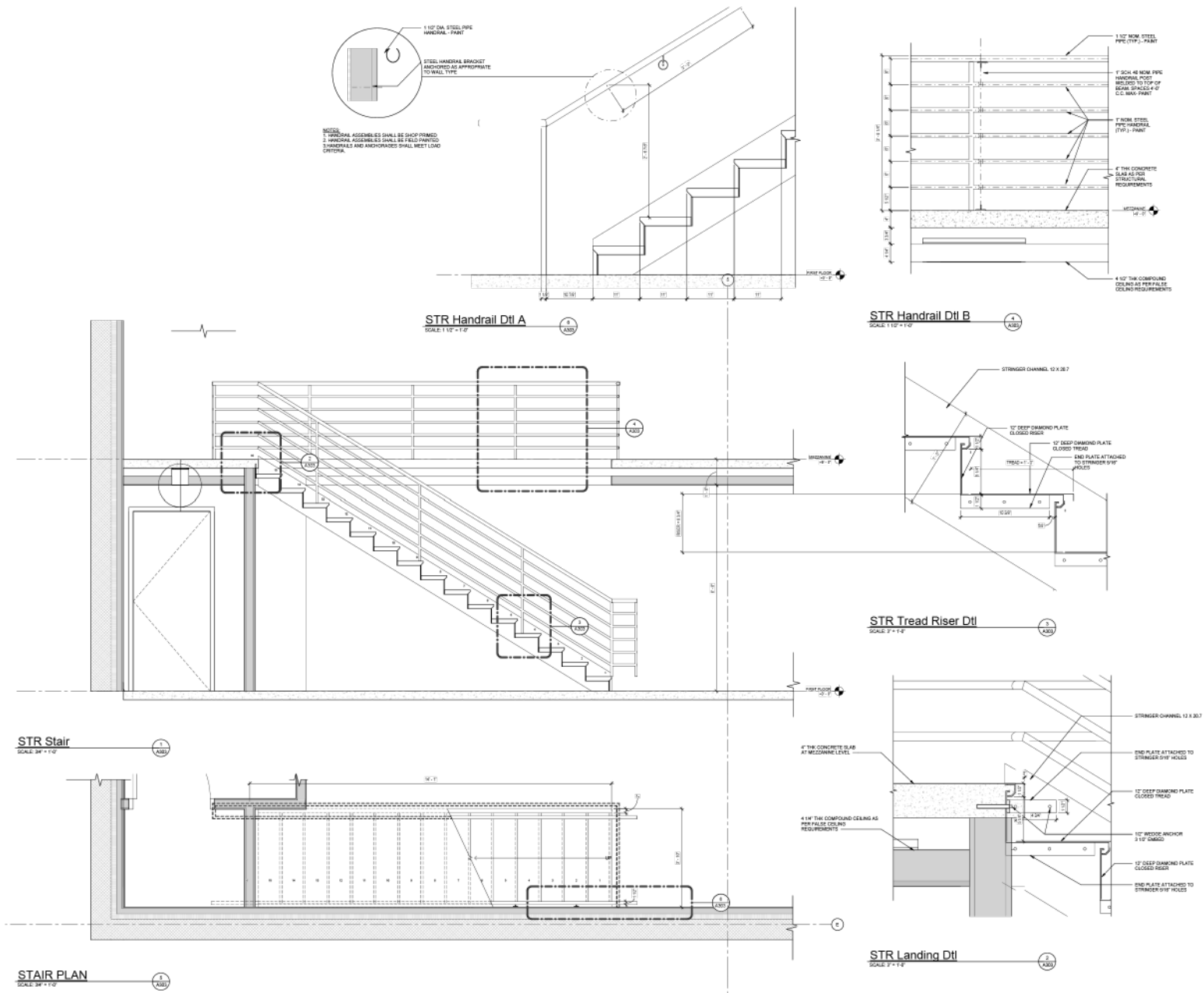


First floor plan

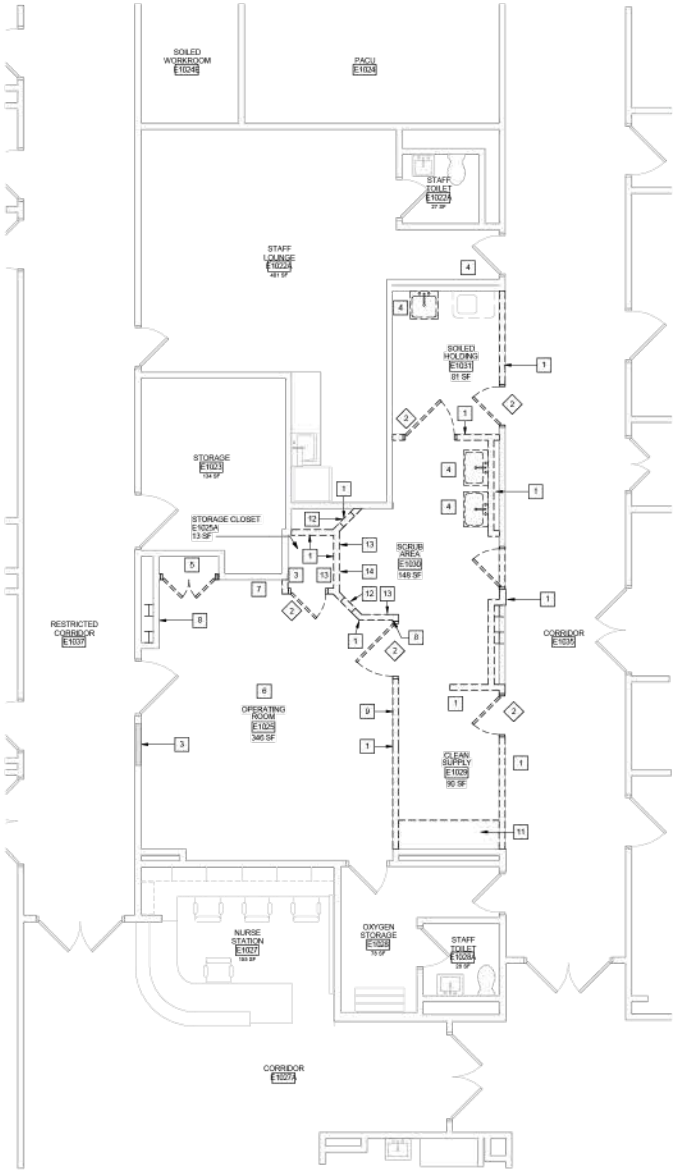
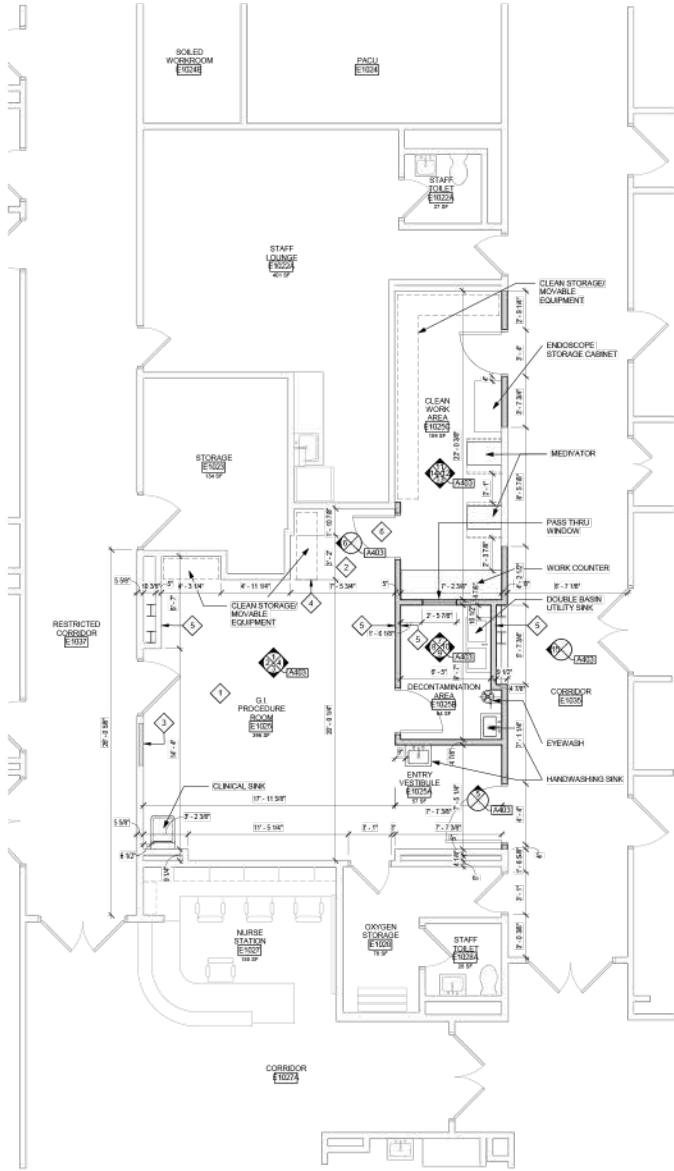
FANTASTIC FRIENDS OF WNY INSTITUTE FOR THE SPECIALLY-ABLED KIDENEY ARCHITECTS

Buffalo, New York
Professional, Internship
Summer 2023 - Spring 2024
Software used - Revit

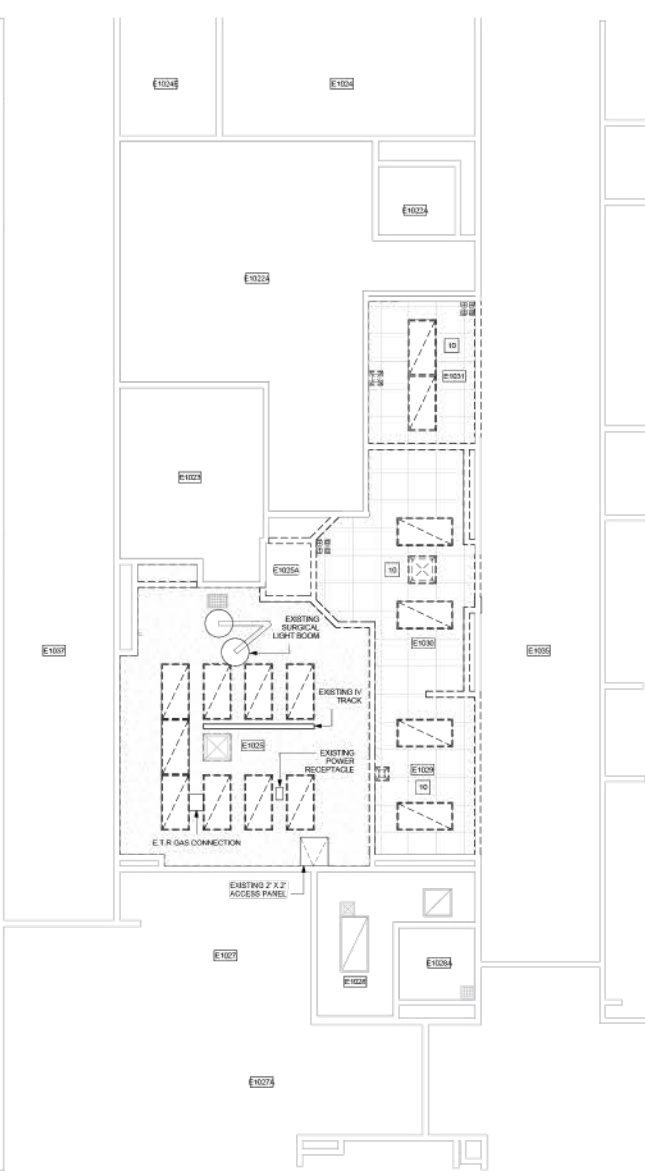
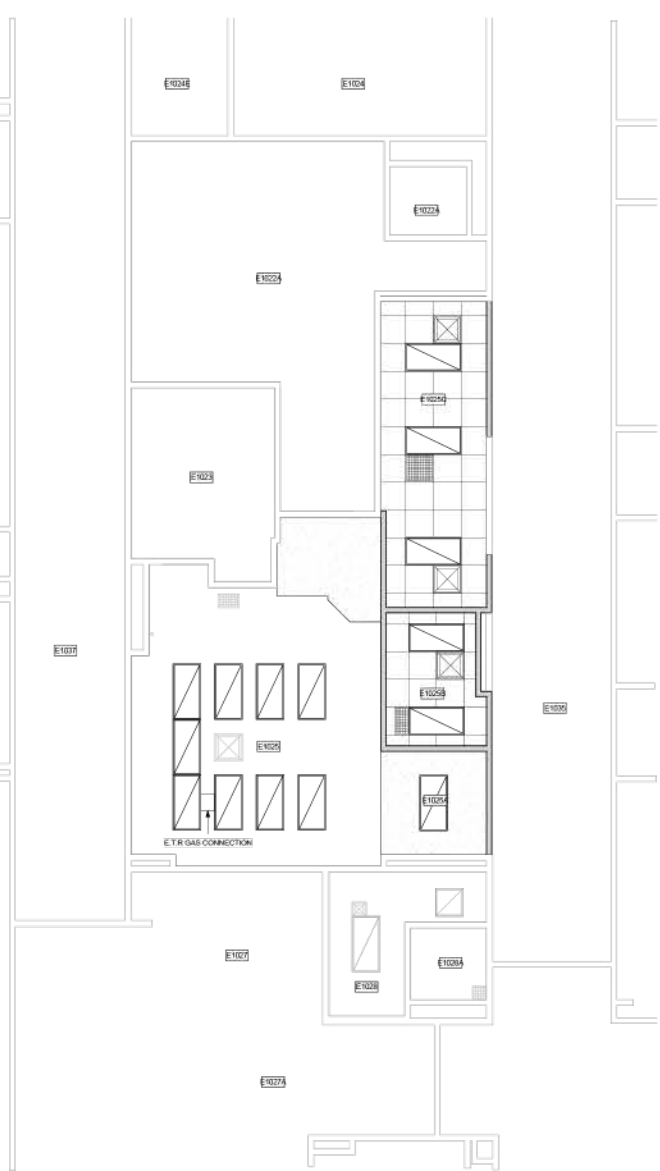
The office was commissioned to do a project for this institution, namely providing retrofits and renovations to their existing spaces, which were ageing and needed interventions. One of the main interventions was to renovated their lobby space and provide an additional staircase linking the first floor and a mezzanine floor level.



Staircase details



Partial enlarged first floor plan - new (left) and partial enlarged first floor plan - demolition (right)



Partial enlarged first floor RCP- new (left) and partial enlarged first floor RCP - demolition (right)

CMH-KMH UROLOGY ROOM

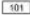





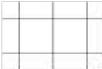












INTERIOR RETROFITTING AND RENOVATION

KIDENY ARCHITECTS

Niagara, New York
Professional, Internship
Summer 2023 - Spring 2024
Software used - Revit, Twinmotion

The CMH-KMH institution wished to convert one of their G.I procedure rooms into a Urology room setup, complete with a operating room. To this end, we prepared demo plans and proposed plans for the space. Further, reflected ceiling plans and interior elevations of all connected rooms were prepared.

DEMOLITION NOTES
1. REMOVE EXISTING MASONRY AND PLASTER PARTITION IN ITS ENTIRETY FOR THE EXTENTS SHOWN. PREPARE ADJACENT SURFACES (WALLS, FLOORS, CEILINGS) FOR NEW SCHEDULED FINISHES.
2. REMOVE EXISTING DOOR, FRAME AND HARDWARE IN THEIR ENTIRETY. PREPARE ADJACENT SURFACES TO RECEIVE NEW SCHEDULED FINISHES.
3. REMOVE EXISTING CONCRETE HOUSEKEEPING PAD (APPROX. 3'-6" X 4'-0" X 4" THK) IN ITS ENTIRETY. PREPARE ADJACENT SURFACES TO RECEIVE NEW SCHEDULED FINISHES.
4. REMOVE EXISTING PLUMBING FIXTURE AND ALL ASSOCIATED COMPONENTS IN THEIR ENTIRETY. REFER TO PLUMBING DRAWINGS FOR ADDITIONAL INFORMATION.
5. REMOVE EXISTING METAL BASE AND WALL CABINETS / UNIT IN ITS ENTIRETY. PREPARE ADJACENT SURFACES TO RECEIVE NEW SCHEDULED FINISH.
6. REMOVE EXISTING 4'-0" WAINSCOT WALL PROTECTION FROM EXISTING TO REMAIN WALLS. PREPARE WALLS TO RECEIVE NEW SCHEDULED FINISH.
7. REMOVE EXISTING RECESSED X-RAY VIEW BOX IN ITS ENTIRETY. REFER TO ELECTRICAL DRAWINGS FOR ADDITIONAL INFORMATION. PREPARE WALL FOR NEW SCHEDULED FINISH.
8. REMOVE EXISTING FLOOR TO CEILING EXPANSION JOINT COVER TO ALLOW FOR REMOVAL AND RE-INSTALLATION OF WALL PROTECTION. SALVAGE AND REINSTALL COVER.
9. REMOVE EXISTING WALL MOUNTED MEDICAL GASES. REFER TO PLUMBING DRAWINGS FOR ADDITIONAL INFORMATION.
10. REMOVE EXISTING ACOUSTICAL PANEL CEILING AND ALL ASSOCIATED COMPONENTS (LIGHTS, DIFFUSERS, SPEAKERS, ETC.) IN THEIR ENTIRETY FOR THE ROOM INDICATED. REFER TO MECHANICAL, ELECTRICAL, PLUMBING AND FIRE PROTECTION DRAWINGS FOR ADDITIONAL INFORMATION.
11. REMOVE EXISTING MILLWORK (BASE, WALL CABINETS / SHELVES) IN THEIR ENTIRETY. PREPARE ADJACENT SURFACES TO RECEIVE NEW SCHEDULED FINISH.
12. REMOVE EXISTING LEAD GLASS VIEW WINDOW AND FRAME IN THEIR ENTIRETY.
13. REMOVE EXISTING RECESSED ELECTRICAL PANEL AND ALL ASSOCIATED CONDUITS IN THEIR ENTIRETY. REFER TO ELECTRICAL DRAWINGS FOR ADDITIONAL INFORMATION.
14. REMOVE (2) 4" DIAMETER CONDUITS TO ABOVE CEILING/ BELOW FLOOR. REFER TO ELECTRICAL DRAWINGS FOR ADDITIONAL INFORMATION. PREPARE FLOOR/ CEILING FOR REQUIRED FIRE STOPPING AND NEW SCHEDULED FINISH.

REFLECTED CEILING PLAN LEGEND			
	ROOM NUMBER		SUPPLY AIR DIFFUSER
	CEILING HEIGHT (EXIST DENOTES EXPOSED) (EXIST DENOTES EXISTING CEILING HEIGHT)		RETURN AIR GRILL
	CEILING TYPE		SMOKE DETECTOR
	SUSPENDED CEILING GRID		THERMO DETECTOR
	GYPSUM WALLBOARD CEILING AND/OR SOFFIT		CARBON MONOXIDE DETECTOR
			SPEAKER
			OCCUPANCY SENSOR
			SPRINKLER
			EXIT SIGN
			SIDE WALL SPRINKLER HEAD
	2' x 4' FLUORESCENT LIGHT FIXTURE		
	1' x 4' FLUORESCENT LIGHT FIXTURE		
	2' x 2' FLUORESCENT LIGHT FIXTURE		
	RECESSED DOWNLIGHT		

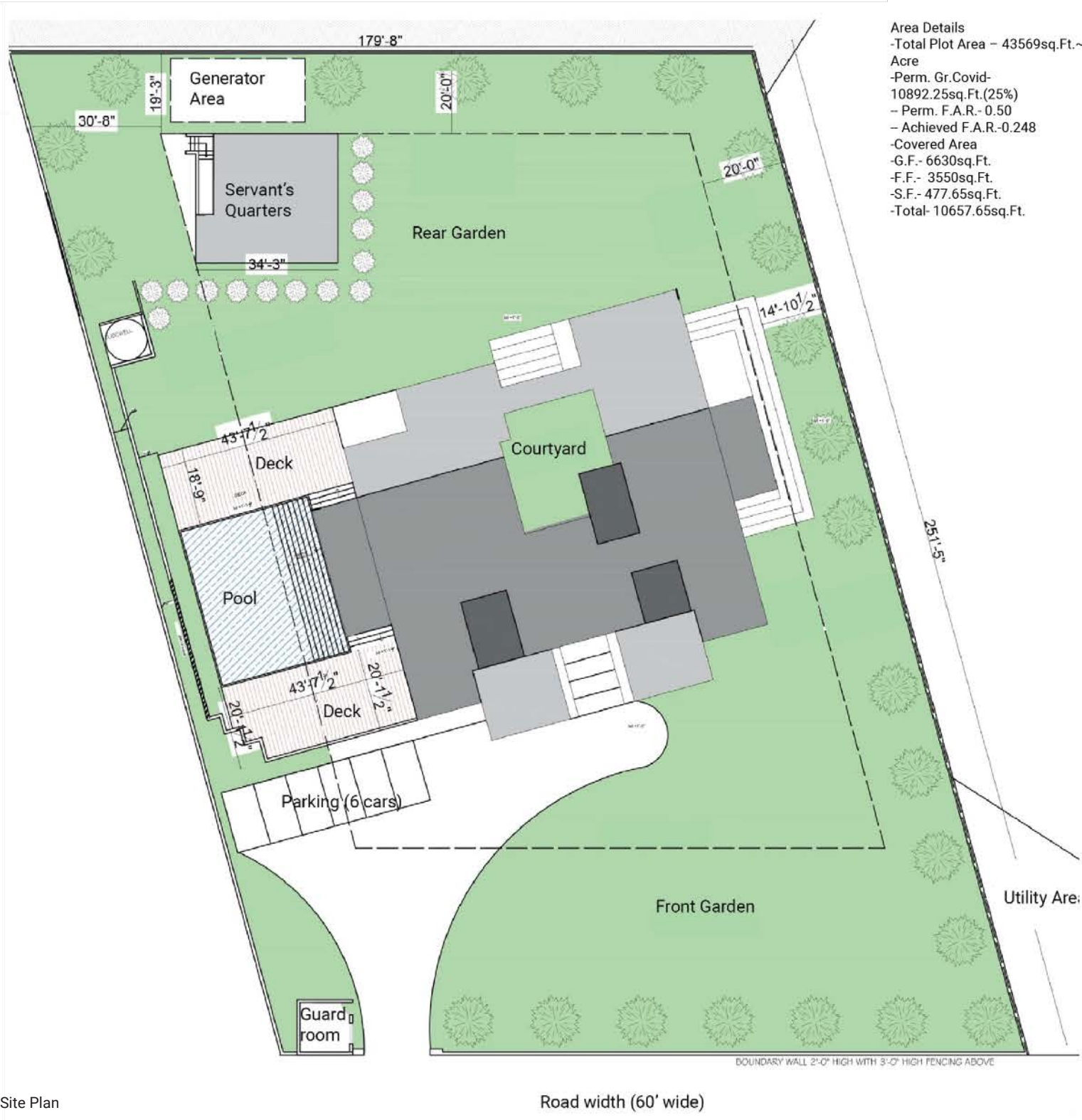


Revit Views of Farmhouse Design

URBAN RESPITE A RESIDENTIAL PROJECT AJAI JOHL AND ARCHITECTS

Siswan, Mohali District, Punjab
Professional Project
2019 - 2021
Under supervision of Ar. Ajai Johl
Software used - Auto CAD, Revit and Photoshop

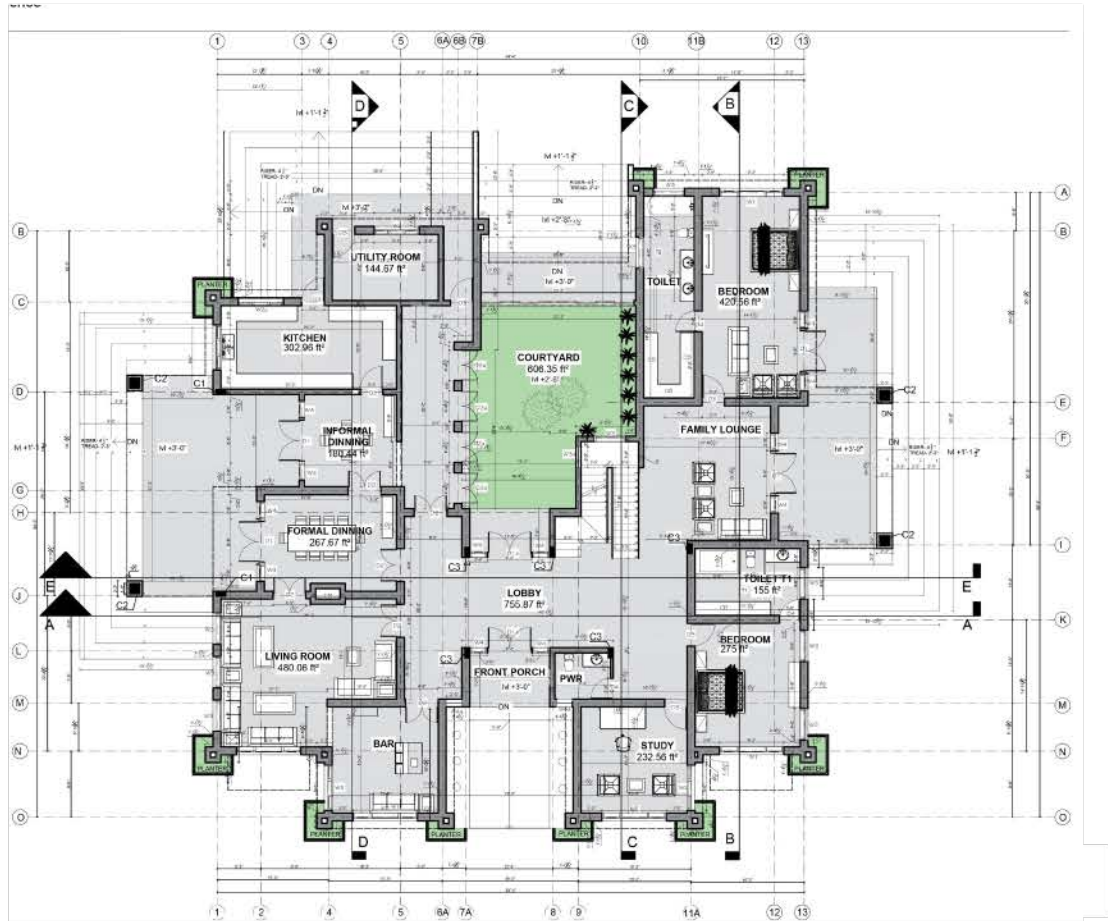
The client’s desire for a family farmhouse was inspired by the elegance of Italian and Spanish villas. The design revolves around a central courtyard, flanked by verandas on each side. One veranda opens to a decked pool area, while the other provides a private retreat near the master bedroom. The design carefully integrates Mediterranean elements like intricately designed window grills, balcony detailing, and wooden pergolas, blending beauty with function. This thoughtful approach creates a tranquil, family-centered space, reminiscent of classic villa architecture. This courtyard also extends to a spacious backyard, emphasizing seamless indoor-outdoor living. The two-story home features a balanced layout, including bedrooms, living rooms, a kitchen, and an office-library. A shaded tree in the courtyard offers a peaceful haven, while the pool is located at the rear for added privacy.



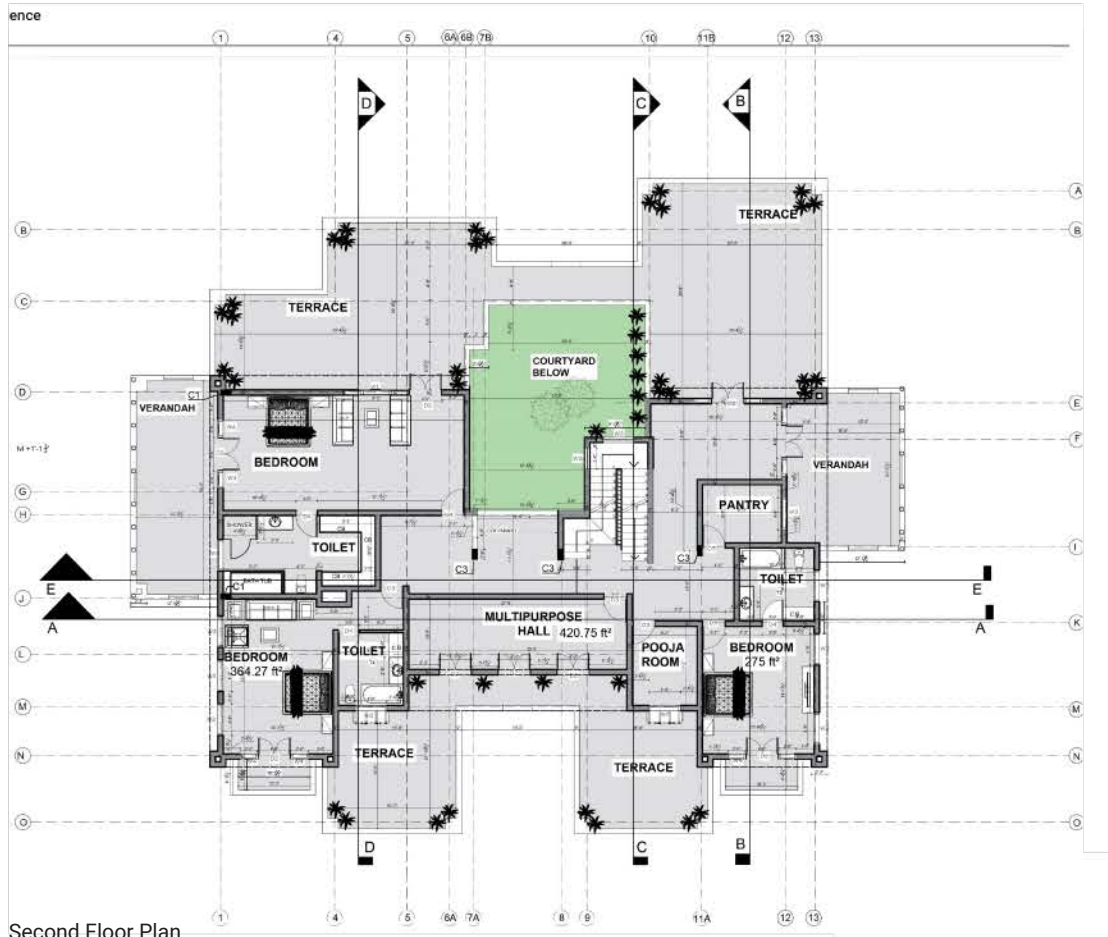
Site Plan

Plot- 22.jubilee
Farmville
Manakpur Sharif,
Tehsil Kharar ,
S.A.S. Nagar
New Chandiagr, Punjab

Area Details
-Total Plot Area – 43569sq.Ft.~1 Acre
-Perm. Gr.Covid- 10892.25sq.Ft.(25%)
– Perm. F.A.R.- 0.50
– Achieved F.A.R.-0.248
-Covered Area
-G.F.- 6630sq.Ft.
-F.F.- 3550sq.Ft.
-S.F.- 477.65sq.Ft.
-Total- 10657.65sq.Ft.



First Floor Plan



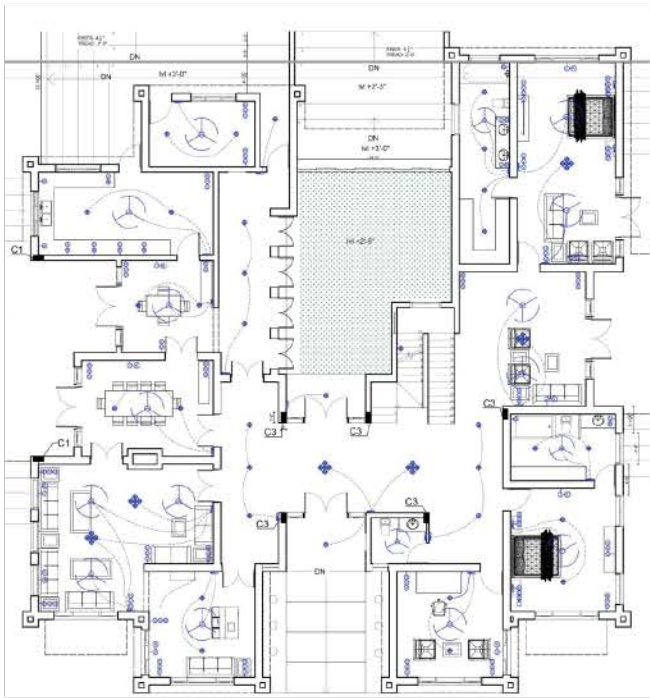
Second Floor Plan



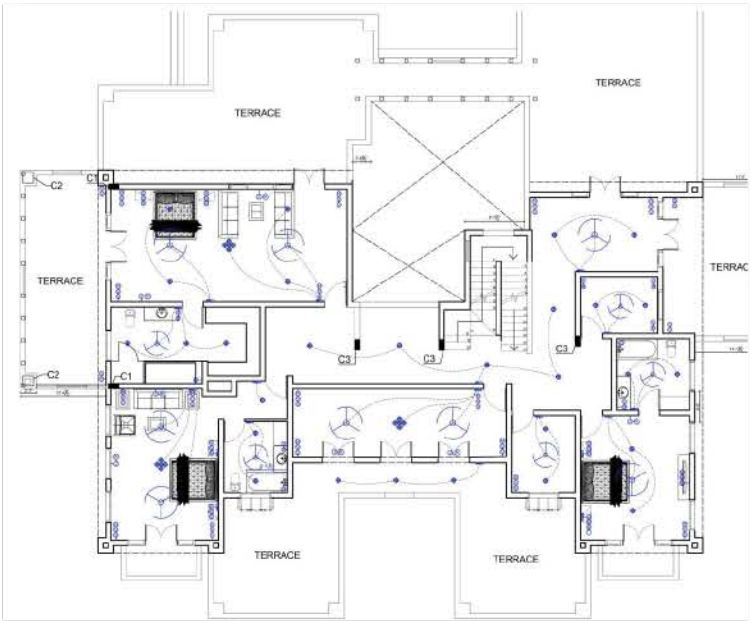
Section AA (top) and Section BB (above)
Electrical plans (below)

U	Gate Light	
	Chandelier	
F	Foot Light	+9"
	Bell Buzzer	+8'-3"
A	Aquaguard	+7'-6"
B	Bell Push	+2'-6"
J	Split Ac provision connected to K	+8'-3"
K	32Amp Industrial Socket for A.C.	+12"
V	5Amp	+3'-3"
R	15Amp	+3'-3"
	Concealed Light	
D	6Amp point (in case of toilet (in case of Dress @+2'-6"))	+12"
E	Exhaust Fan	as/detail

	Ceiling Fan	
G	Geyser	+7'-6"
H	15Amp. Point	+12"
L	wall mounted light	+7'-6"
N	Telephone	+12"
S	Tube Light	+7'-6"
	Switch Board (in case of bed side switch board to be at the height of @+2'-6")	+3'-6"
T	T.V. Antenna	+18"
X	Bed Light	+2'-6"
Z	Two Way Switch (as/switchboard)	+3'-6"



First Floor Plan



Second Floor Plan

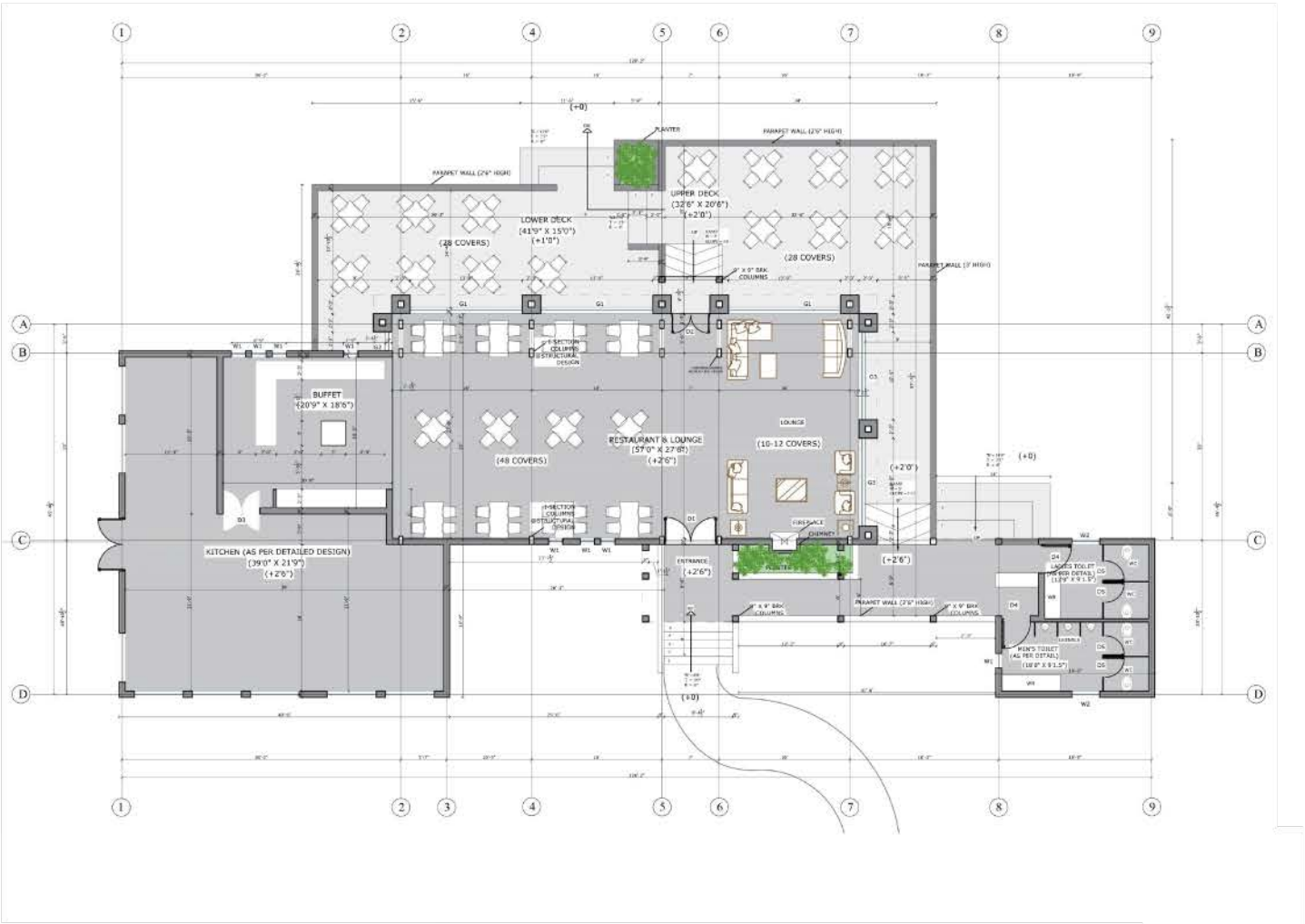


Site Plan

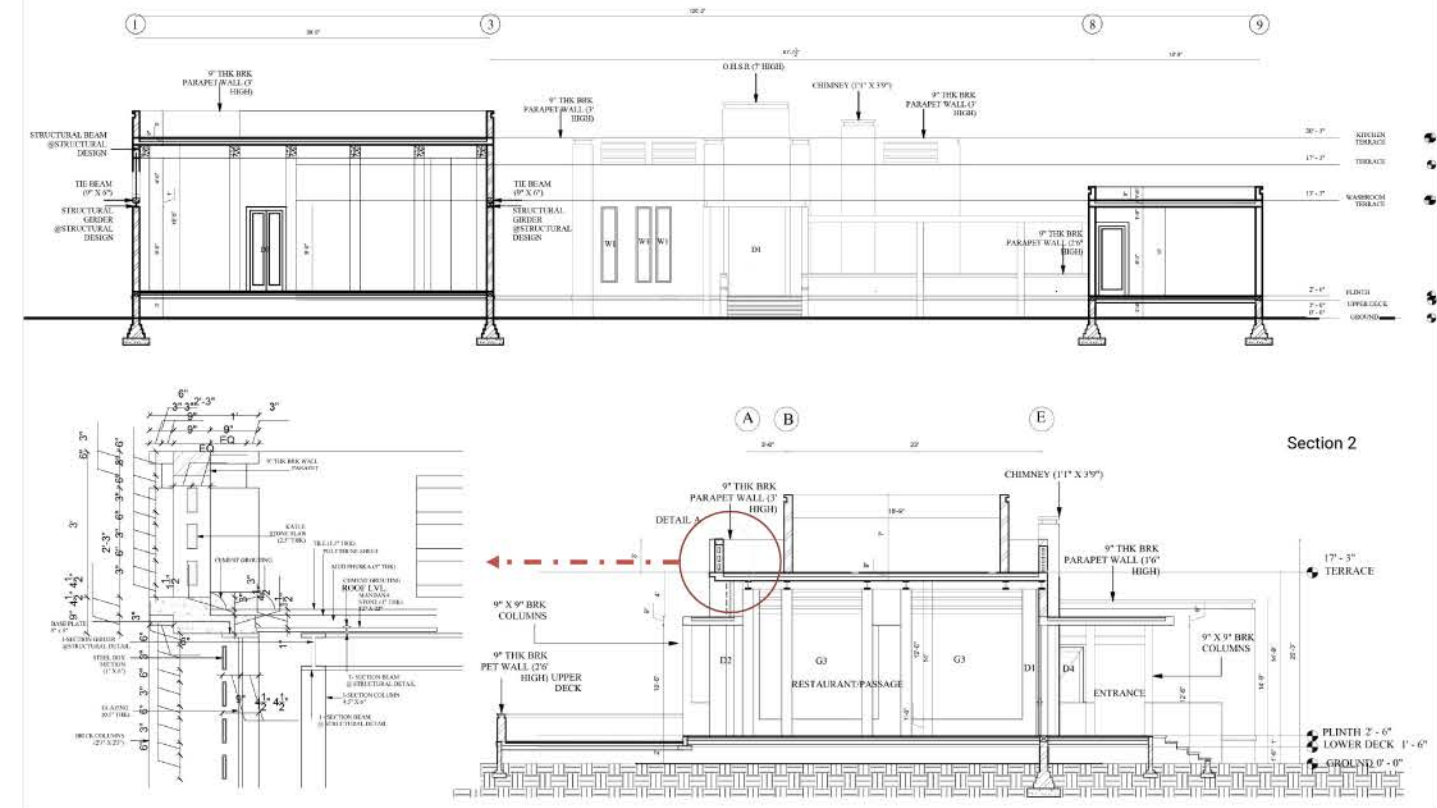
OLIVE TROTTERS A RESORT PROJECT AJAI JOHL AND ARCHITECTS

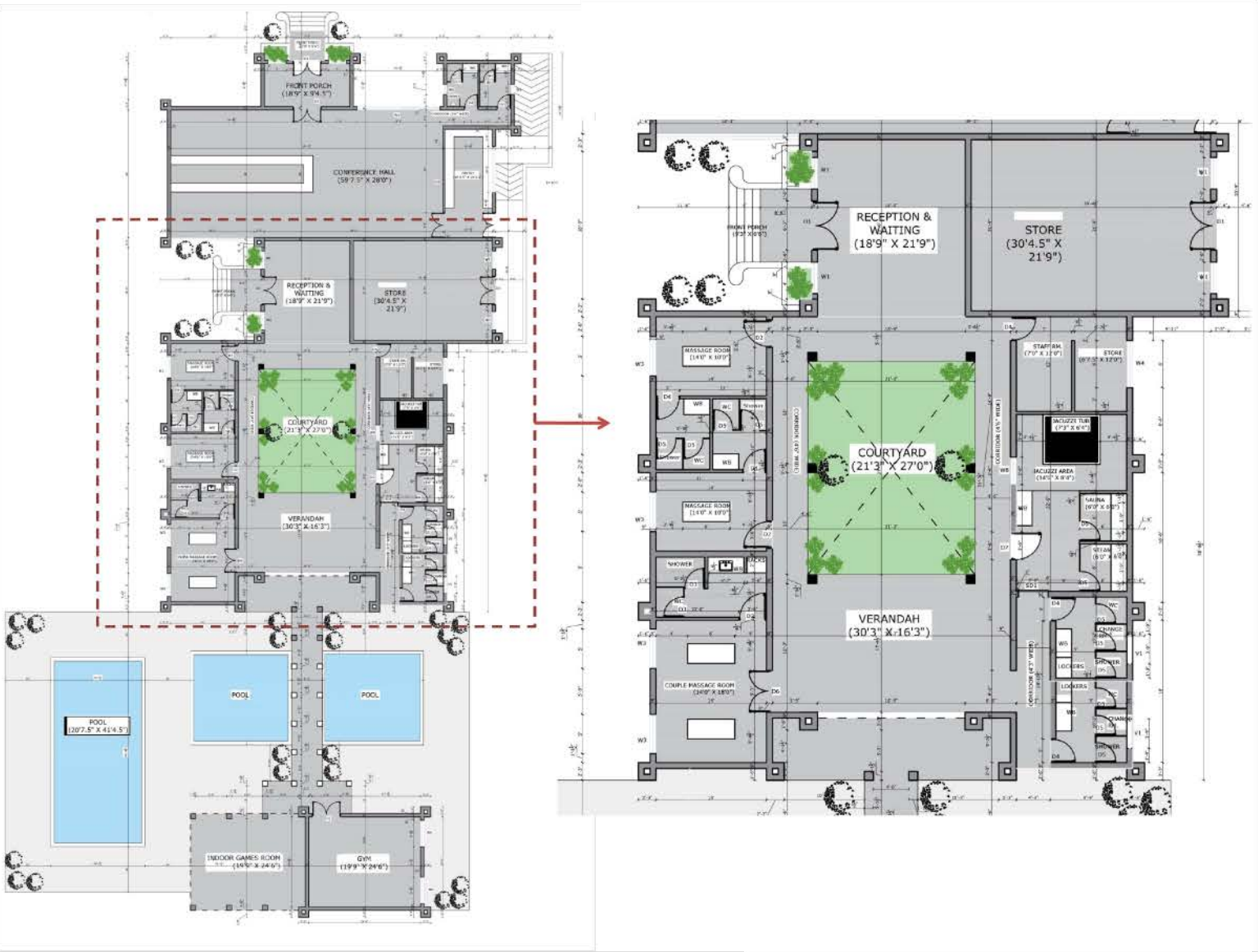
Nangal, , Punjab
 Professional Project
 2019 - 2021
 Under supervision of Ar. Ajai Johl
 Software used - Auto CAD, Revit and Photoshop

The resort is located on the banks of the Satluj River, near Nangal, Punjab, and shares its boundary with a stable housing 30 horses owned by the client. Designed as an eco-resort, the construction embraces a modest yet rustic aesthetic, blending harmoniously with nature. The resort immerses guests in the surrounding landscape and river views. The meticulously landscaped gardens, featuring local plant species, lead guests to the restaurant and spa blocks. Beyond these lie private cottages that capitalize on scenic views of a serene pond between the resort and the river. This tranquil setting offers guests a secluded, natural retreat, complete with a private beachhead for relaxation. The design enhances the connection to nature, providing an intimate and peaceful escape.



Restaurant floor plan (above) and restaurant sections (below)

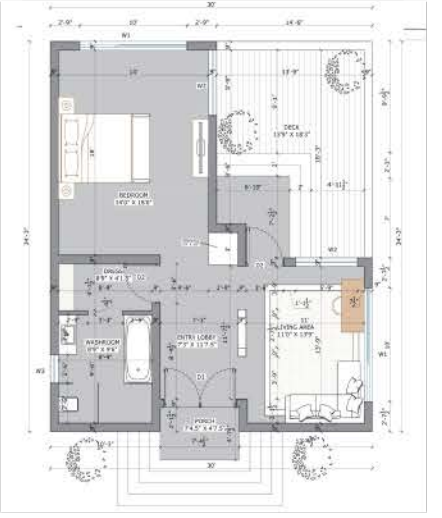




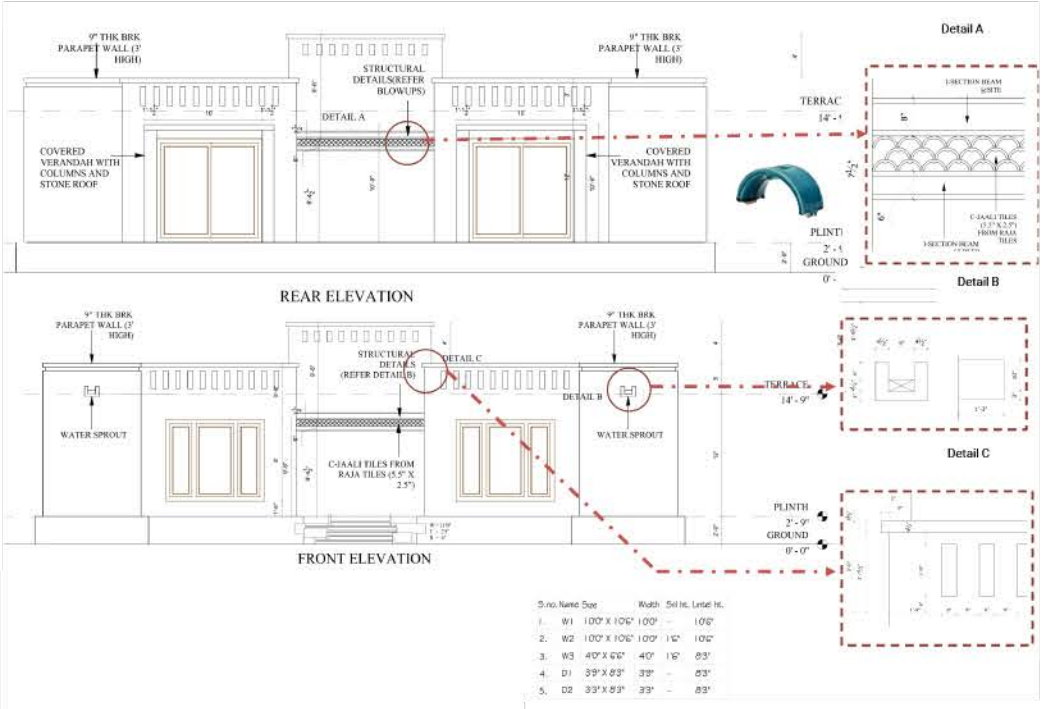
Spa floor plan (top) and elevational perspective views (above)



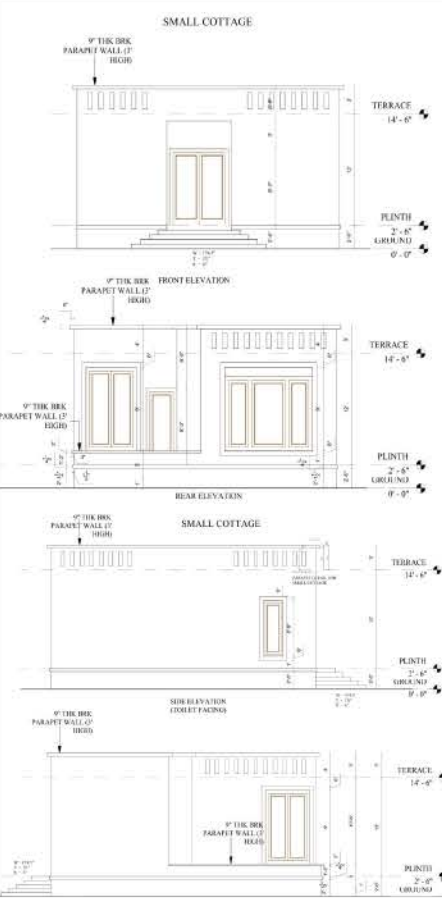
Cottage type 1 floor plan



Cottage type 3 floor plan



Cottage type 1 elevations



Cottage type 3 elevations

Mayank Sharma

M.Arch Portfolio 2022-2025 + Professional Work

Master of Architecture 2025

School of Architecture and Planning

University at Buffalo/ SUNY Buffalo

archmayankrise@gmail.com