

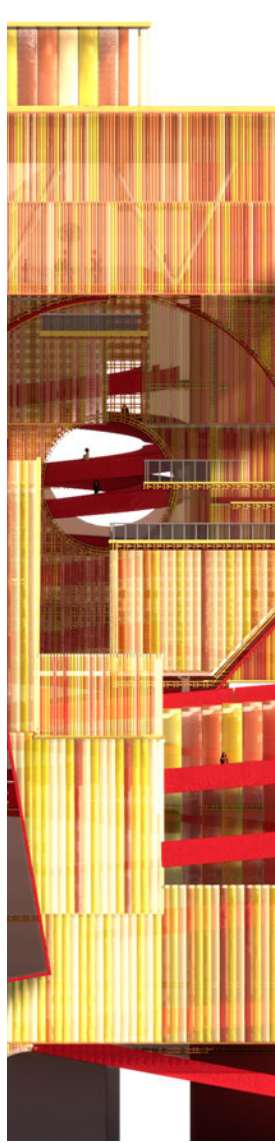
Selected Works 2021-2024
University of Pennsylvania Weitzman School of Design
Master of Architecture



TABLE OF CONTENTS

LUCID
GATHERING

4-7



FLOATING
BATHHOUSE

8-13



ROWHOUSE
FRENZY

14-19



VIADUCT
GARDEN

20-23



01 LUCID GATHERING

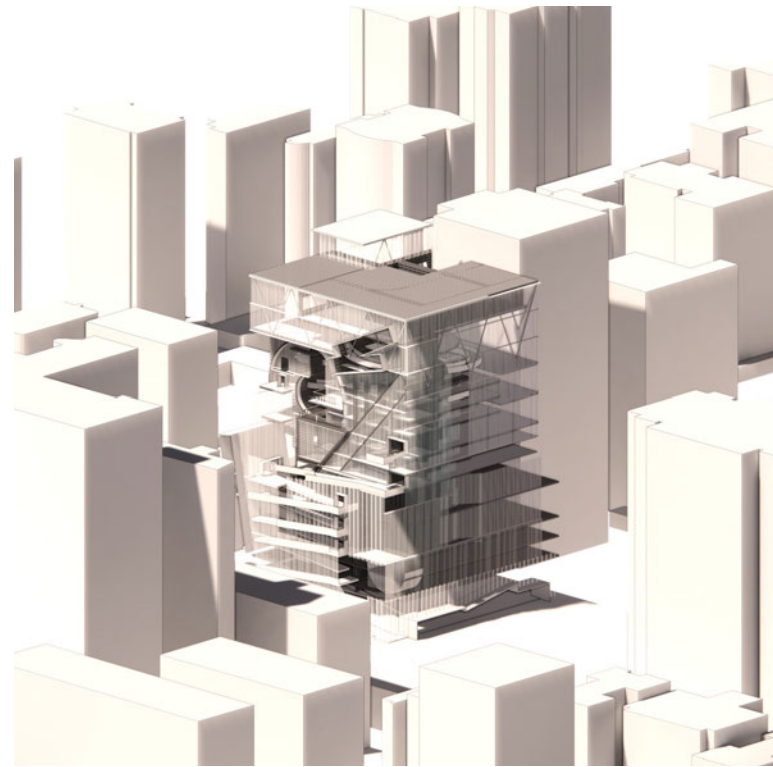
PLACE: SAO PAULO, BRAZIL

YEAR: FALL 2023

TYPE: ACADEMIC GROUP PROJECT, TRAVEL STUDIO

PROFESSOR: NATE HUME

COLLABORATOR: MING CHEN

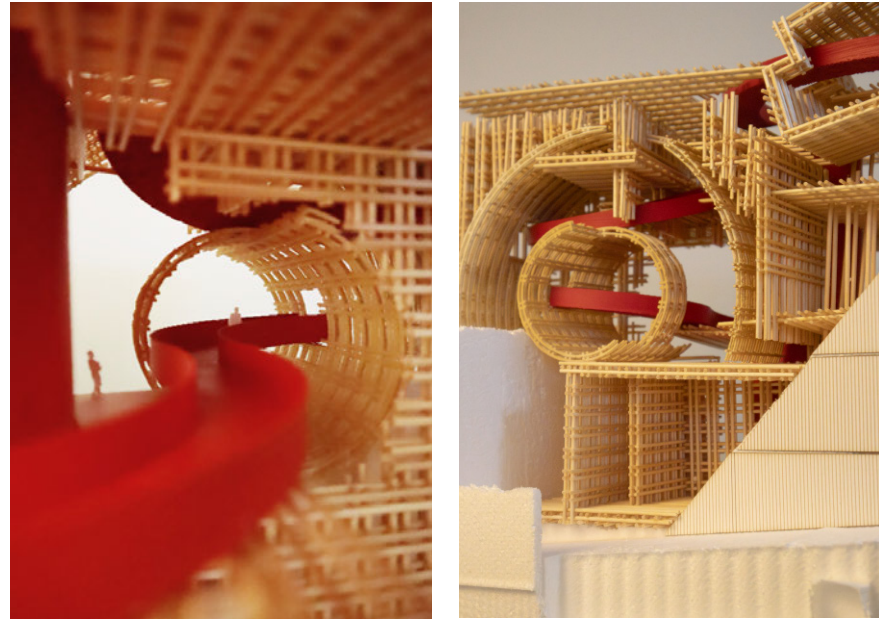
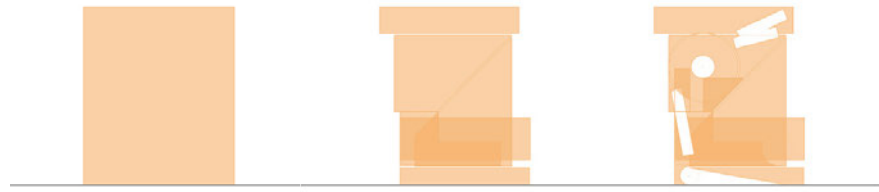


The Sesc project in São Paulo aimed to create a welcoming and transparent community space that integrates seamlessly with its urban surroundings. Inspired by nearby landmarks and green spaces, the design features a central core and ramp system, facilitating continuous access and interaction.

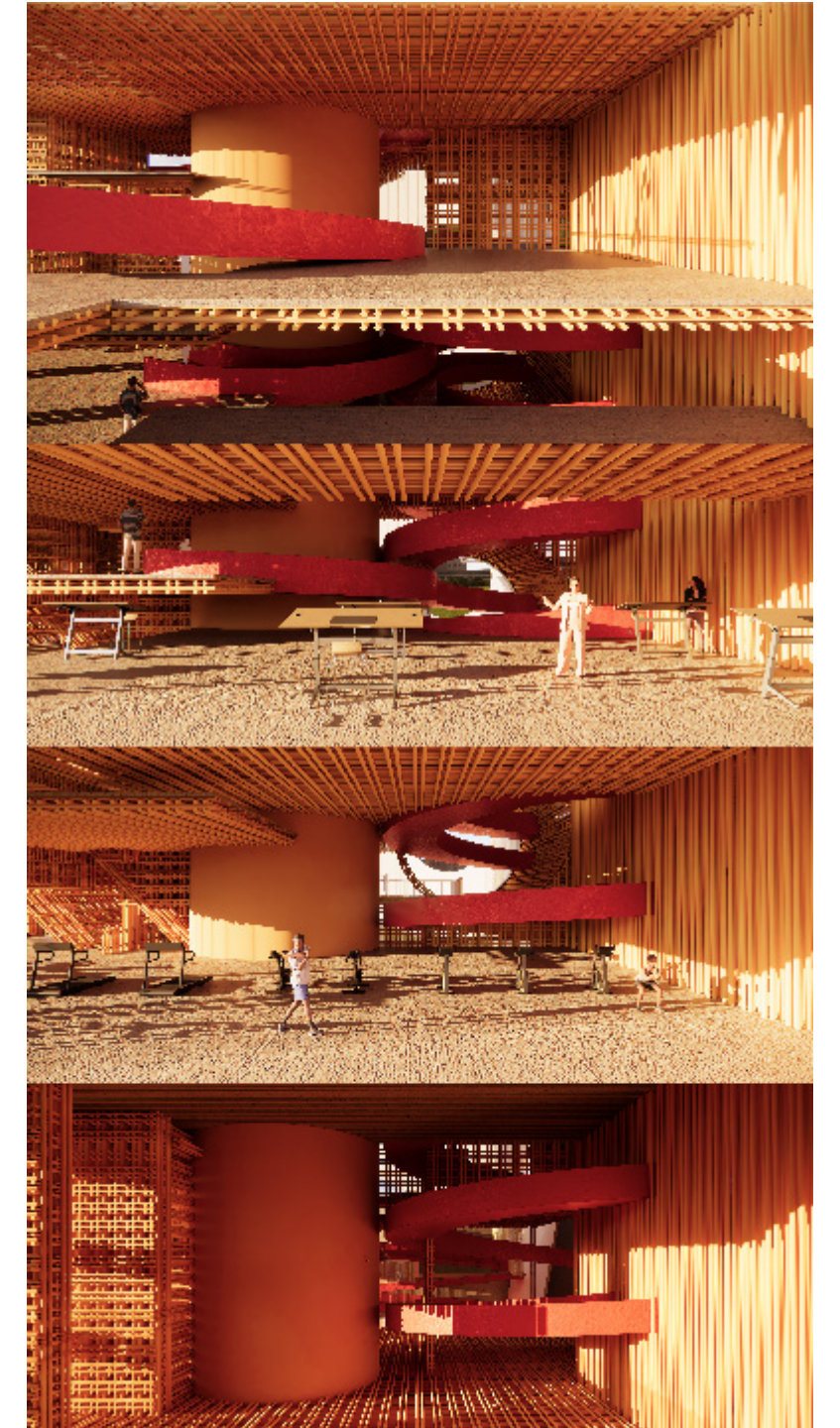
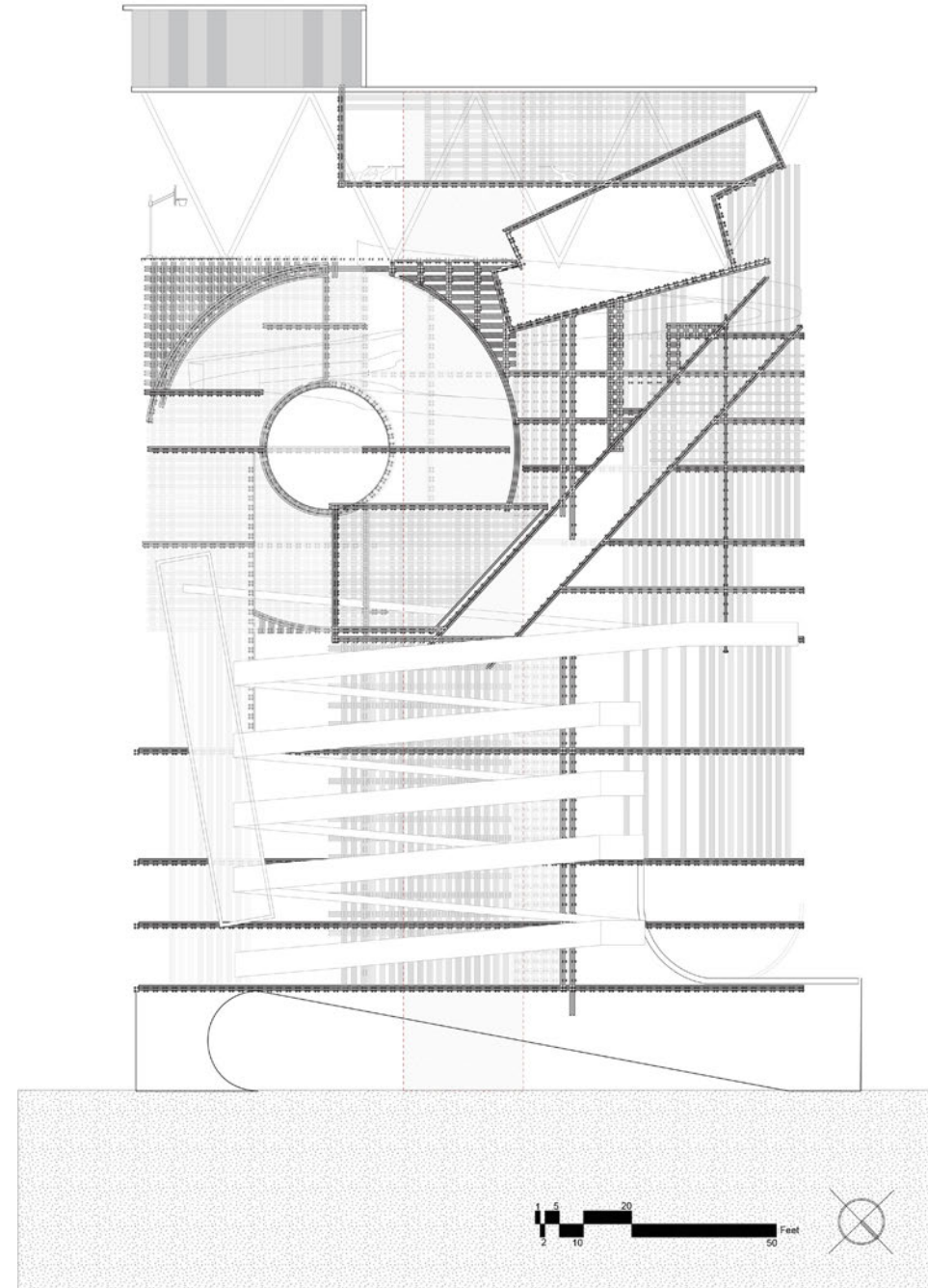
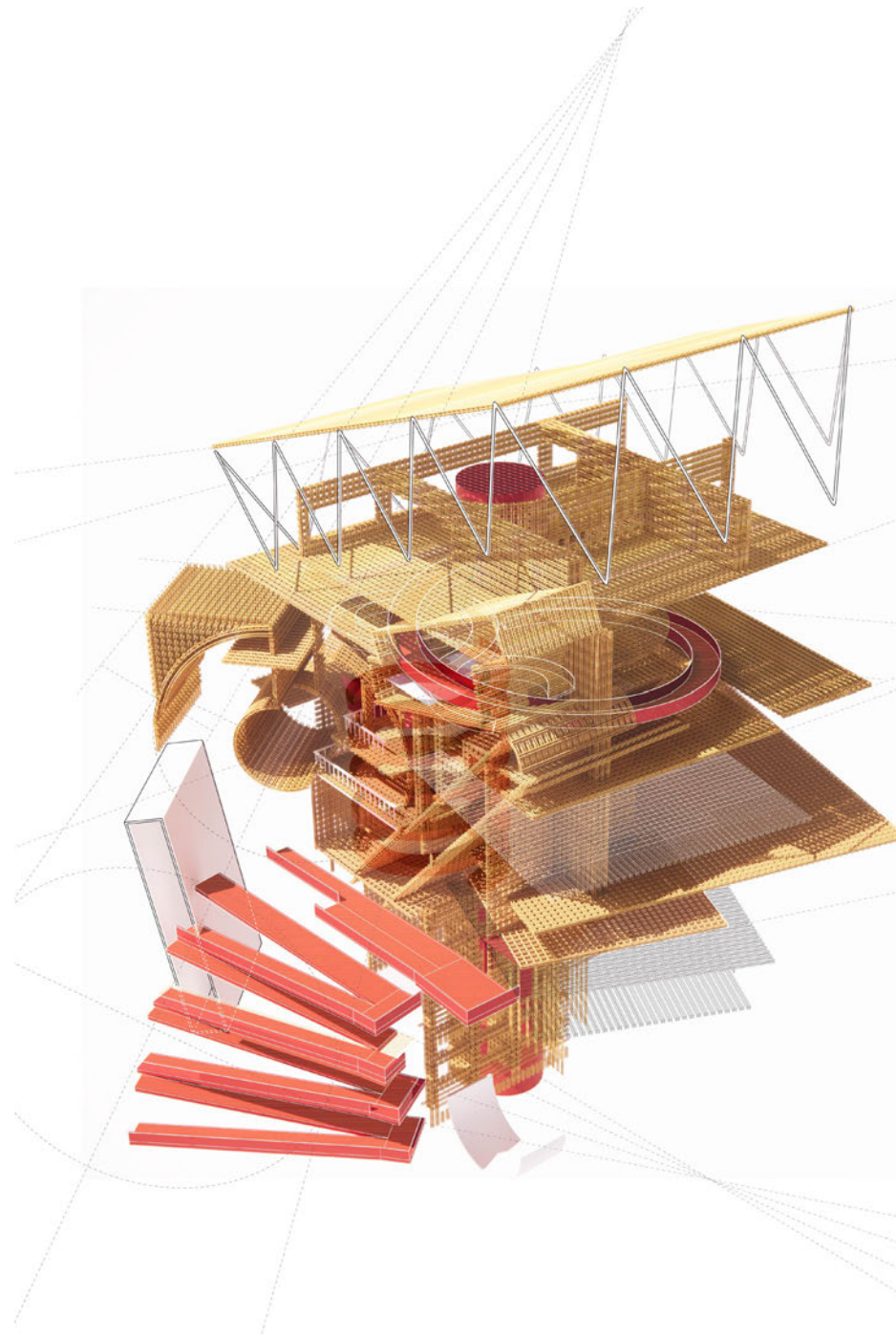
Bamboo was chosen for its structural versatility, forming a translucent framework that supports the building while integrating with concrete elements for stability. The façade, made from recycled soybean plastic, reflects the dynamic and welcoming atmosphere of Sesc, with adjustable translucency for privacy and openness.

Programmatically, the building houses a gym and dentistry services, both open to the public to promote interaction and community engagement. Through thoughtful design and material choices, the Sesc project embodies a holistic approach to architecture, prioritizing well-being, sustainability, and integration with the urban fabric.





The geometry of the stacking informs the circulation logic throughout the building. This is represented through the center elevator core and the two ramp systems that account for the interior as well as the exterior circulation.



02 FLOATING BATHHOUSE

PLACE: PHILADELPHIA, PA

YEAR: SPRING 2023

TYPE: ACADEMIC GROUP PROJECT

PROFESSOR: DANIEL MARKIEWICZ

COLLABORATOR: JING HUANG

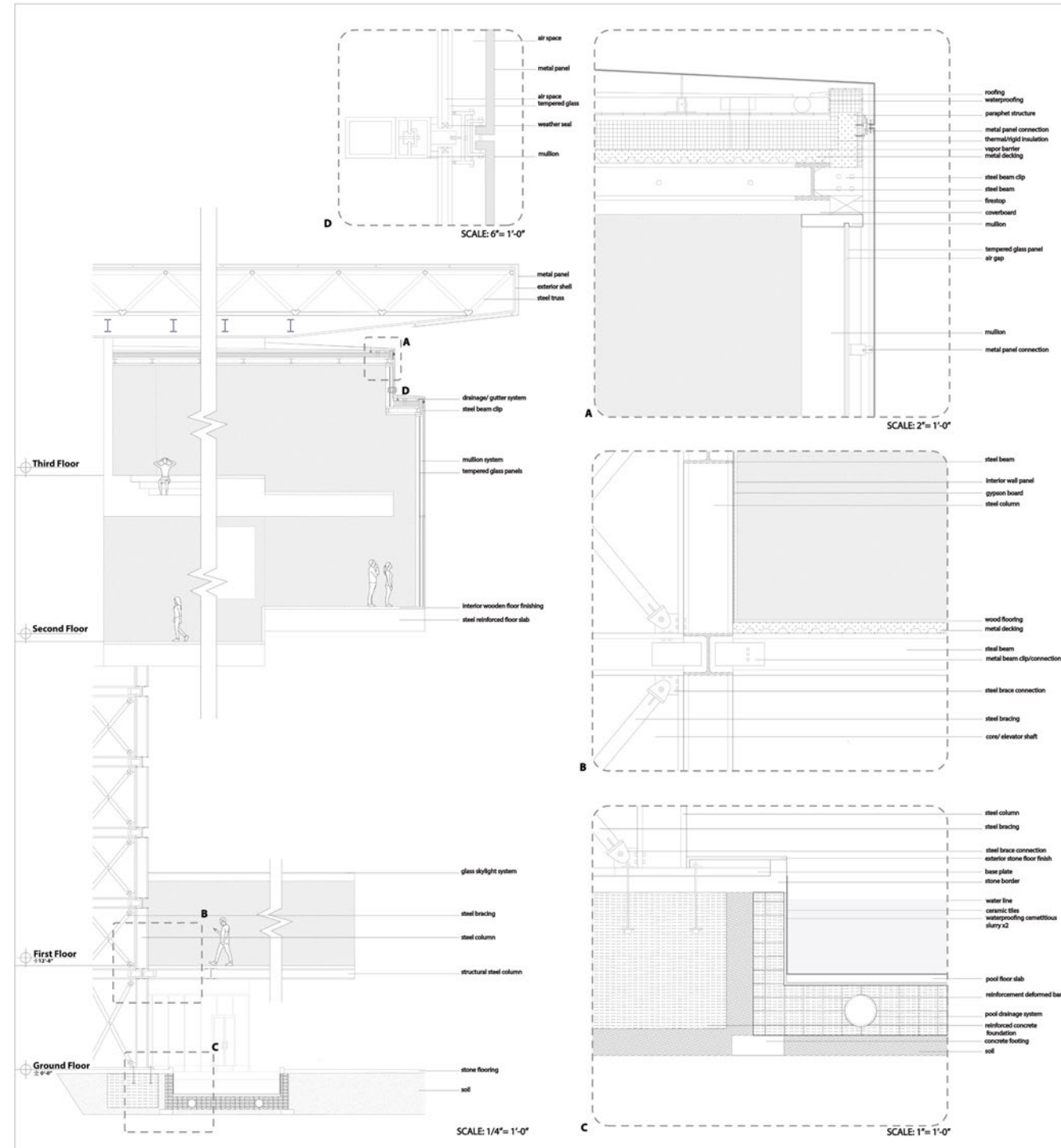


The floating bathhouse project is where architecture meets nature to redefine relaxation. The design carves into the land, establishing ground and sub-levels connected by a ramp while elevating the bathhouse above ground, creating a unique spatial relationship for diverse experiences. Surrounded by serene nature, the bathhouse offers a tranquil retreat away from urban chaos. Meticulously planned circulation pathways provide freedom to explore, with paths leading to the main lobby or the large ramp accessing various programs. With a focus on natural elements and innovative design, the bathhouse invites visitors to embark on a journey of relaxation and architectural wonder.



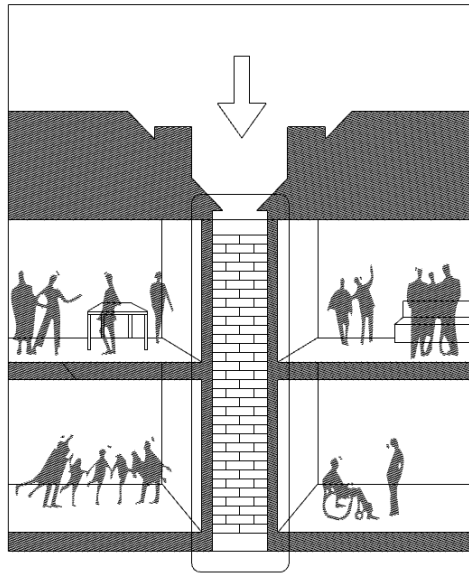


Looking into the interior scene, the breathing openings in the ceiling introduce natural light and ventilation, while a steel cage exterior structure creates an airy atmosphere, seamlessly integrating with nature. Transparency and color variation enhance the experience, with opaque panels ensuring privacy on the upper level and transparent glass connecting the interior with nature below.



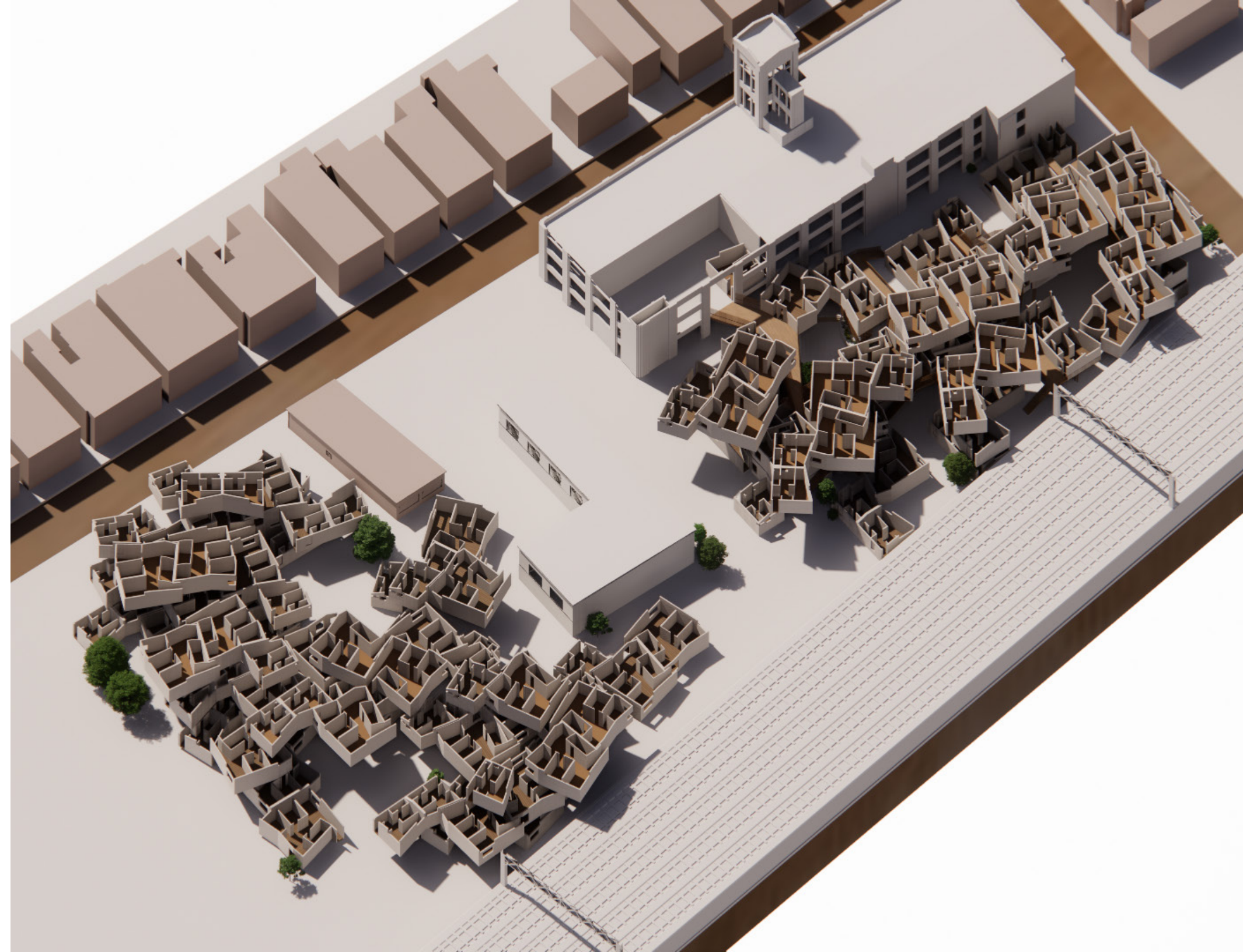
03 ROWHOUSE FRENZY

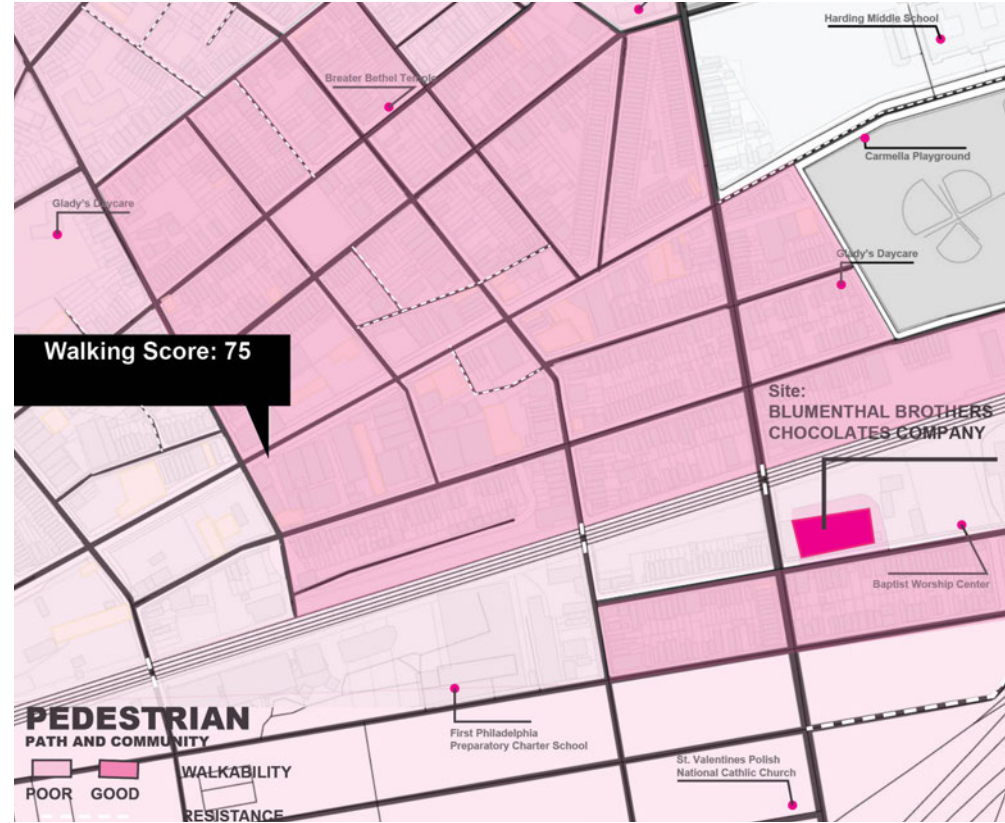
PLACE: PHILADELPHIA, PA
YEAR: FALL 2022
TYPE: ACADEMIC PROJECT
PROFESSOR: BRIAN PHILLIPS



Inspired by Philadelphia's iconic rowhouse blocks, this project reimagines the city's urban fabric to foster new social and spatial connections between residential units and public spaces. Departing from William Penn's original city plan, the design offers a fresh perspective tailored to the needs of the younger generation.

Guided by the principles of visibility and circulation, the form of each unit reflects the irregular motion of the mutated Rowhouse grid. This approach not only integrates the residential complex with existing structures but also enhances vertical circulation through the establishment of a revised "party wall." Thus the design encourages social interactions at ground level while preserving privacy and solitude as residents navigate through the changing landscape of the site.





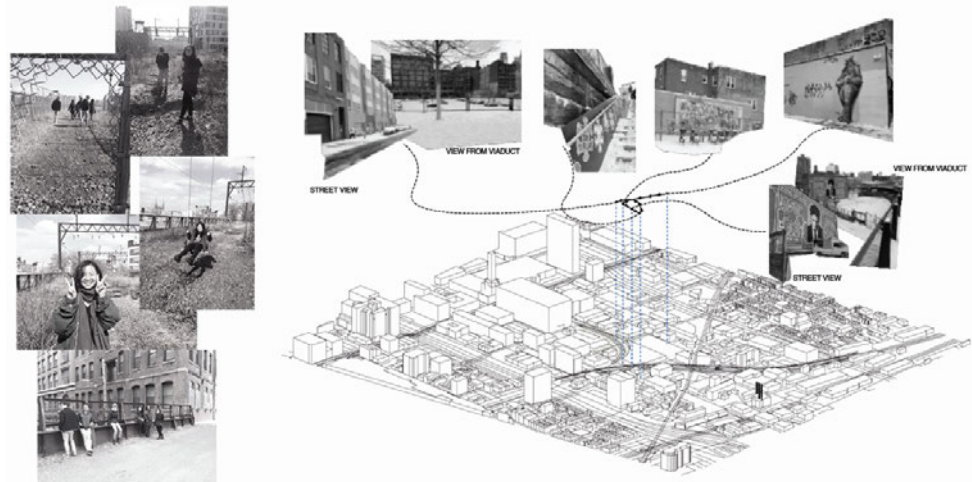
The walkable nature of the surrounding site guides the circulation within the interior of the factory and the flow of the force.





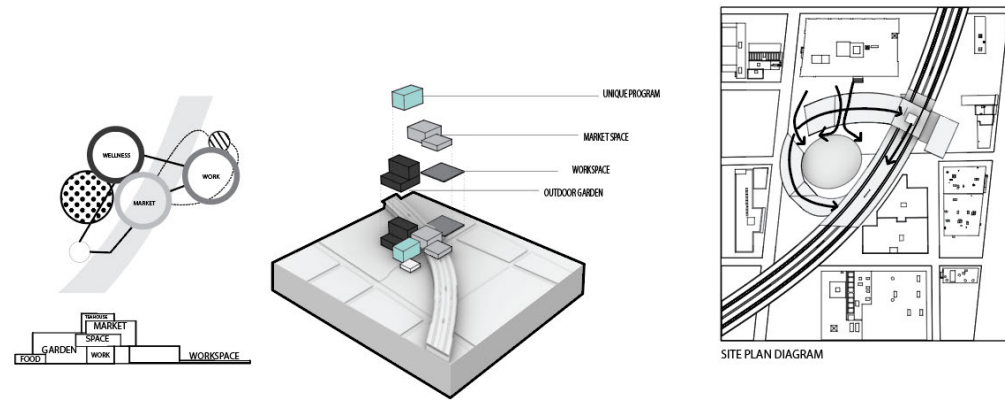
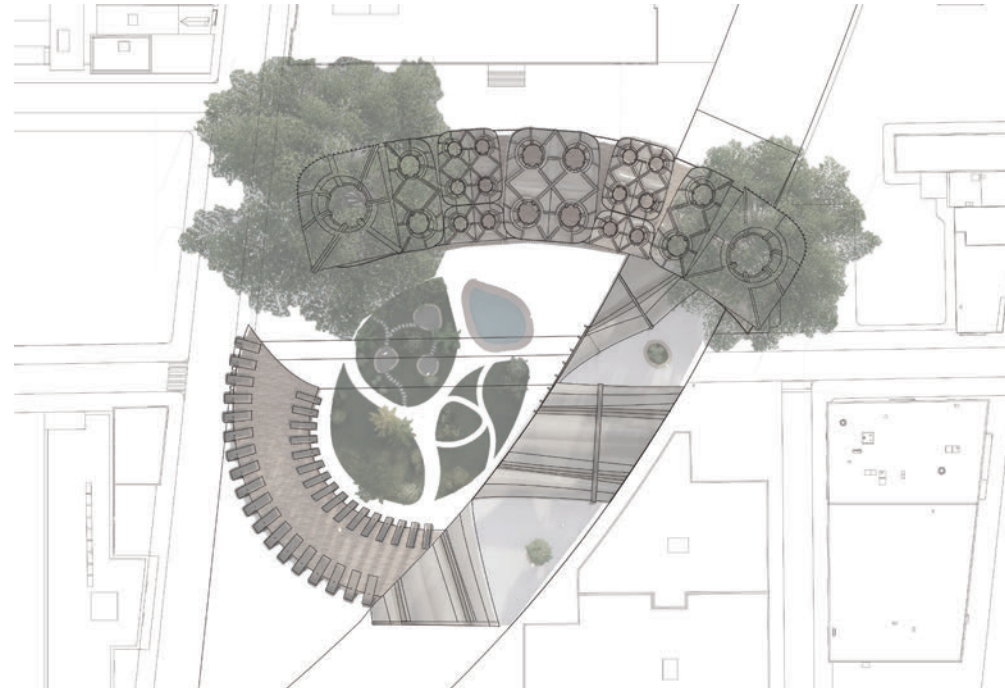
04 VIADUCT GARDEN

PLACE: PHILADELPHIA, PA
YEAR: SPRING 2022
TYPE: ACADEMIC PROJECT
PROFESSOR: JACKIE MARTINEZ



In the heart of the Callowhill neighborhood, amidst the urban landscape and near the viaduct, an oasis of wellness emerges from an empty parking lot. Inspired by the ethos of the neighborhood and the viaduct's atmosphere, the design confronts the prevailing sense of abandonment with a space dedicated to health and vitality. Drawing from Gestalt principles, the design vision aims to revitalize the community while providing a tranquil retreat adjacent to the bustling open market space on the viaduct. Enter the connecting tea house and adjacent garden, where students and office workers alike can pause and rejuvenate amidst the daily grind.







Selected Works 2021-2024
University of Pennsylvania Weitzman School of Design
Master of Architecture