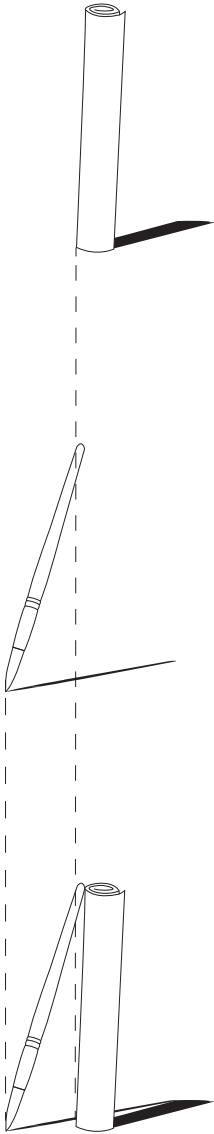


A. DE LEON
Art & Architecture



About

Dedicated aspiring licensed architect, interior designer, and artist with a profound source of inspiration drawn from the scopes of design, art, nature, and music. Navigating through contrasting and complementary elements, colors, and materials to orchestrate harmonious compositions, driven by a vision to create designs resonating with both nature and humanity, the focus lies in shaping spaces that nourish the soul and elevate the wellbeing of its users. With the intent to lend expertise to diverse areas in architecture, where design becomes a catalyst for enriching experiences and cultivating connection

www.adeleonartarch.com/
adeleonartarch@gmail.com

 @adeleonartarch

Table of Contents

Healing Architecture: A Place for Wellness Graduate Thesis	4
Circular Community	14
Un Form Atelier Research-based studio	20
Las Islas Community Center	26
Central Serenity Residence	32
Paper Forms, Urban Flows 120 hours Competition	36
Visual arts	40

1 HEALING ARCHITECTURE

A PLACE FOR WELLNESS

This thesis project is located in Ameca, a city in the state of Jalisco, Mexico. About two hours from the metropolitan city of Guadalajara. Ameca comes from the word Amecatli which means river or water cord in the indigenous language, Nahuatl.

Ameca is an agricultural, commercial, and industrial city where sugarcane and cereals are commonly grown based on the favorable weather conditions. In addition, a sugarcane mill is situated in the area. Cattle, pigs, and horses are also widely raised and sold.

The form formation started with the idea of using the cruciform shape and taking advantage of the already established formality of the form such as the placement of columns, entrance points, and circulation aisles. Additionally, the form would be broken down





by courtyards simulating a monastery or hacienda. The design principles implemented include transparency, progression and transition, symmetry, and materiality.

The design principles implemented include transparency, progression and transition, symmetry, and materiality. Transparency is implemented through the openings of windows and doors but also influenced by the materiality which in this case is brick. Brick celosias are used creating different patterns allowing light to come in through the brick. The use of skylights, open-air spaces, and courtyards were also explored and used in some way on the project.

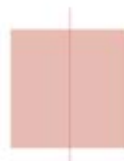
The theoretical framework for this project involved vernacular architecture, religious architecture, and the impact of physical health on mental health, seeking to unravel the intricate interplay of cultural, spiritual, and environmental factors that shape and contribute to human well-being.



Transparencies



Progression & Transition



Symmetry



Materiality

Thesis Statement

Given the absence of qualified personnel and infrastructure, along with the current architectural typology, there is a pressing need for the establishment of a novel community mental health center in Mexico, this project will focus on mood disorders such as bipolar disorder and major depression integrating both mental and physical health services, enabling patients to manage their overall well-being. This novel approach aims to create an environment for patients, their families, medical personnel, aspiring psychologists, and the wider community to foster mental health awareness and support, incorporating vernacular architecture with an emphasis on religious motifs defining the center's design ethos.

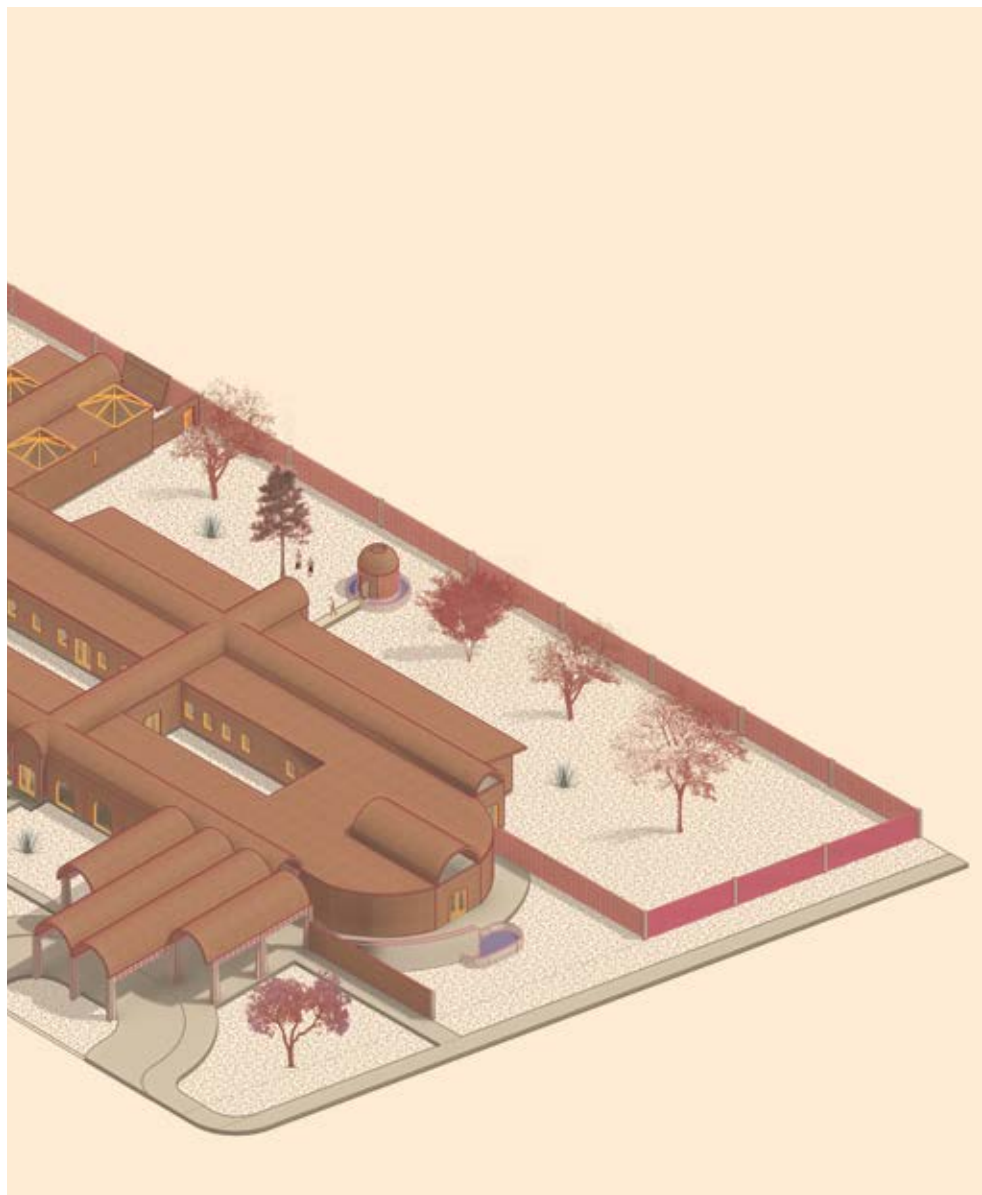


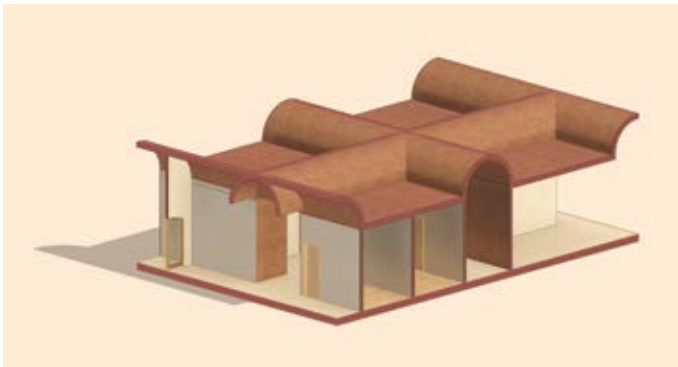
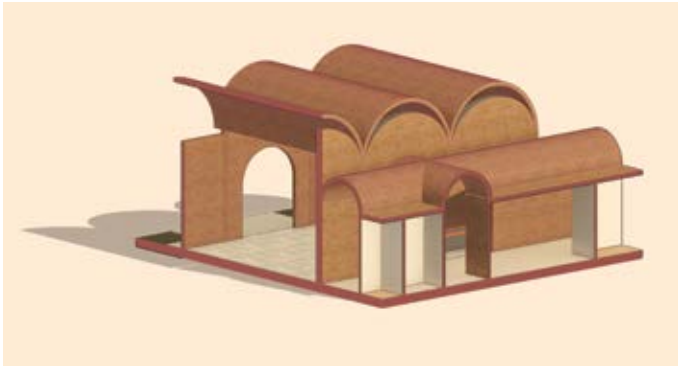
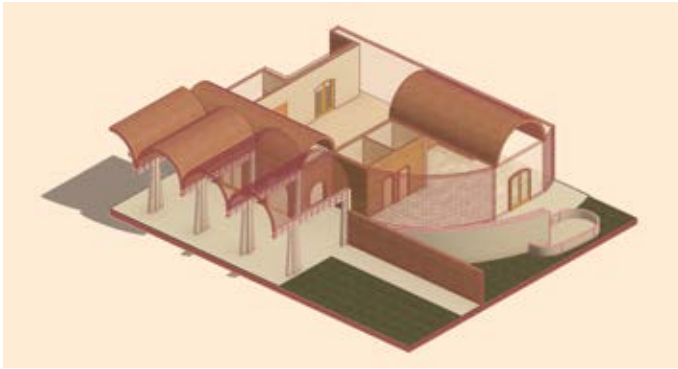






The facility will provide support to the community by providing outpatient services such as cognitive behavioral therapy and animal-assisted therapy. Patients can get support for their physical health as well as their dental health all in one facility for their convenience. Furthermore, the facility will have an emergency section to treat patients having a mental health crisis with patients staying in a short-term period. Staff can enjoy outdoor space with the allocation of two courtyards providing staff with private outdoor areas for them to have a break, meditate, and unwind from their duties.





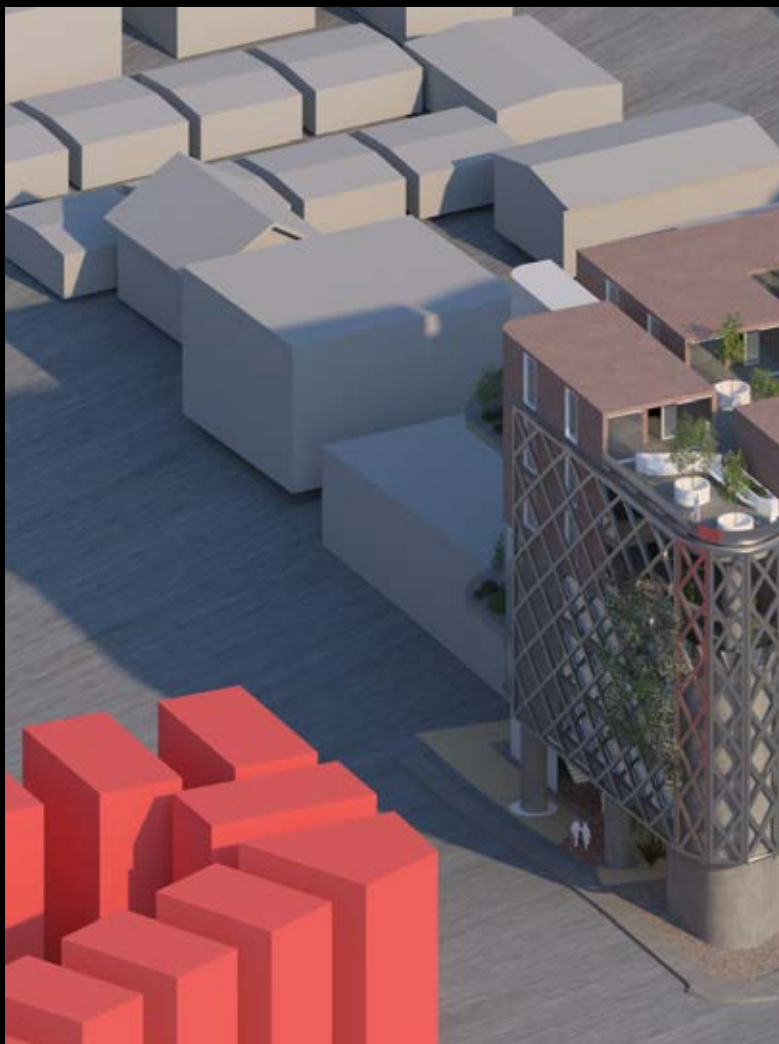
The project's tectonics take advantage of the innate properties of brick, utilizing playful layering to achieve various patterns and create a porous surface. This design choice brings a sense of warmth and texture into a mental health context. Brick is also employed in the roof structures, requiring horizontal placement. Safety requirements dictated areas where the brick needed to be covered, leading to a thoughtful designation of exposed and covered brick based on the programmatic needs of the building.



This project was awarded "Graduate Outstanding Thesis Award" by Newschool of Architecture and Design.

2 CIRCULAR COMMUNITY

hillcrest



Located at 3090 Centre Street in San Diego's Hillcrest community, "Circular Housing" is an affordable housing project consisting of 38 residential units above a community garden at ground floor and amenities in upper floors. Circular Housing is composed with two different housing typologies, studios and two-bedroom units focusing on ample and warm interiors for parenting youth, elders, and LGBTQ youth. Amenities consist of a food market and a health clinic with multiple services such as mental health therapy, physiotherapy, and optometry to care for the most vulnerable.



Circular Housing embodies its lush character through the harmonious interplay of geometric shapes, delicately smoothing their edges to evoke a profound sense of security for its end users. Intertwined vegetation seamlessly merges with the structure, flourishing from within and extending outward through a secondary skin. The meticulous organization is executed following a twenty-foot grid system creating molding cubes that can be twisted, moved, and removed from the grid.

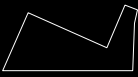
FORM
MAKING

CIRCULATION

ORGANIC FORMS
BREAKING LINEAR FORM

MOLDING SHAPES

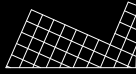
MODULARITY



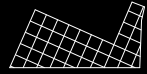
PROPERTY LINE



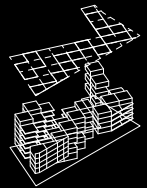
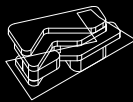
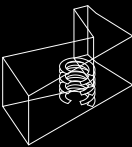
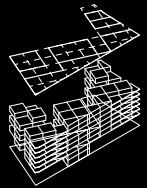
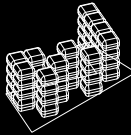
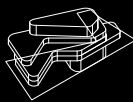
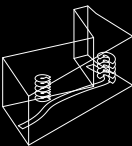
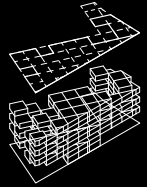
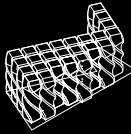
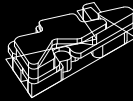
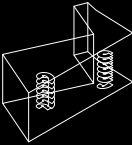
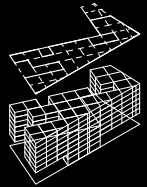
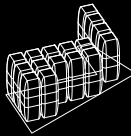
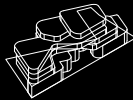
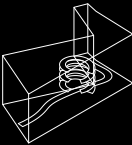
FORM-MAKING BASED ON PROPERTY
ANGLES, PROJECTION AND
ROUNDING EDGES

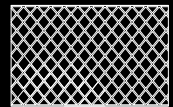
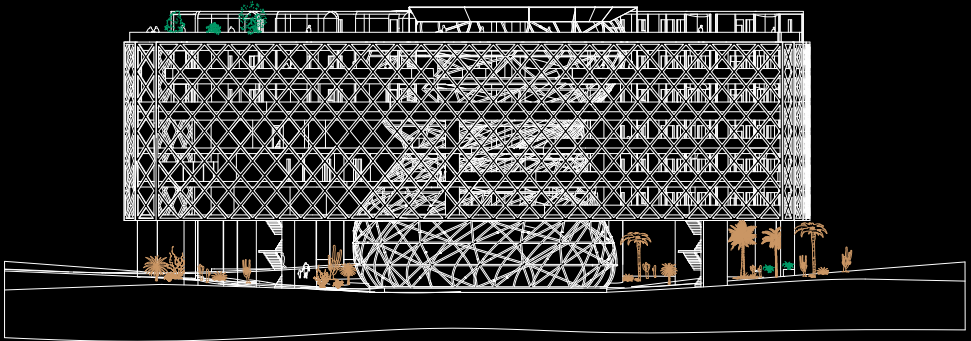


20FT. SQUARE GRID

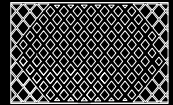


20FT. SQUARE GRID

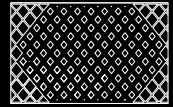




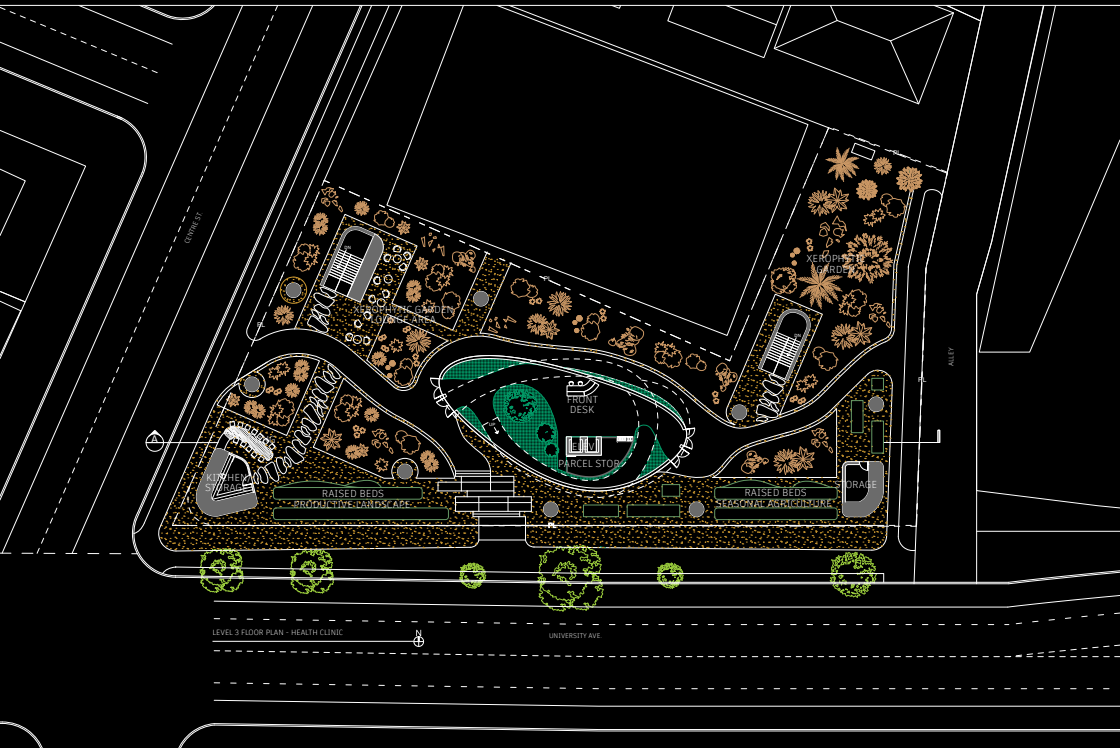
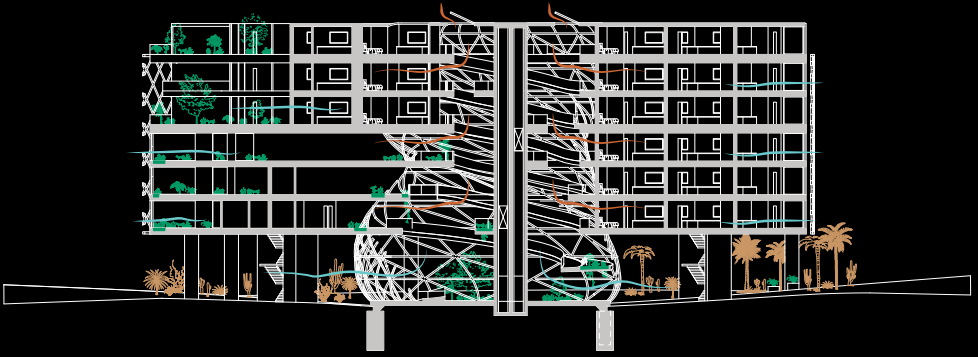
SHADING 100% OPEN



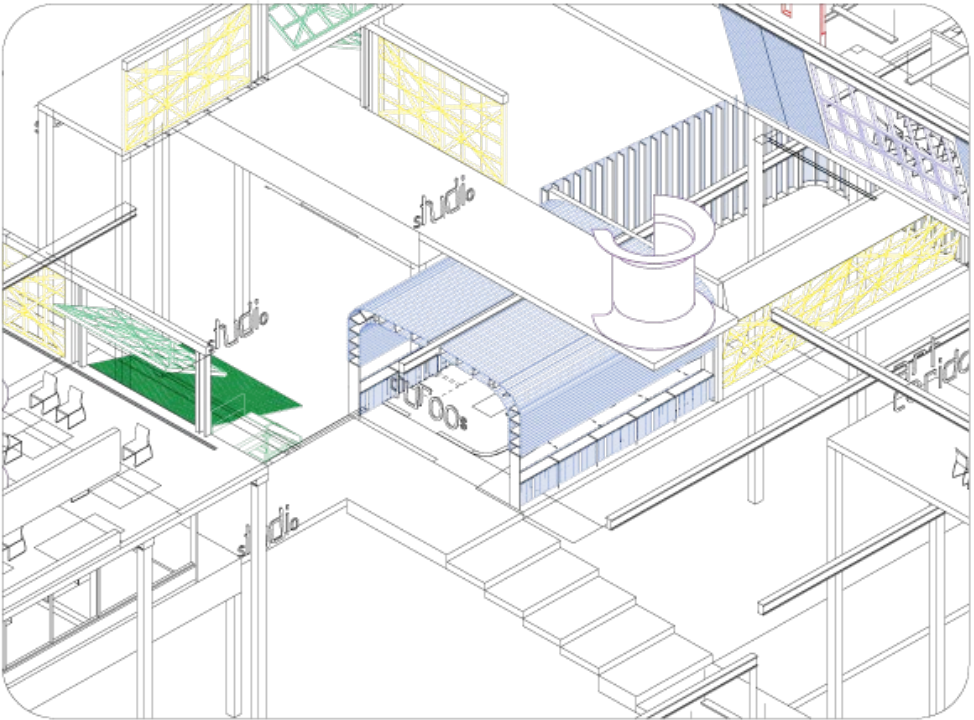
SHADING 50% OPEN



SHADING 100% CLOSED



3 un form atelier

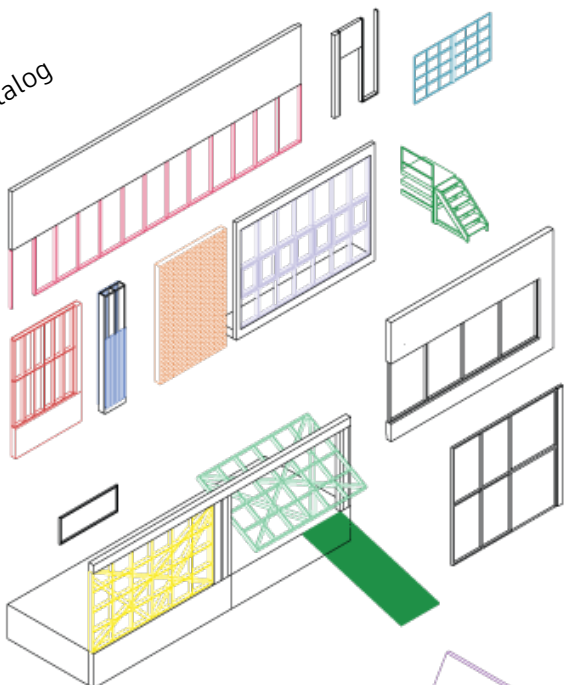


STUDENT CENTERED-SCHOOL

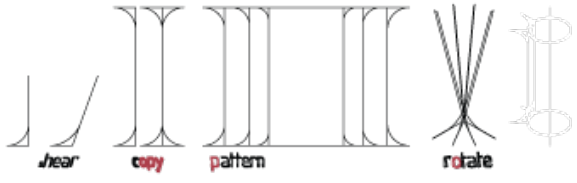
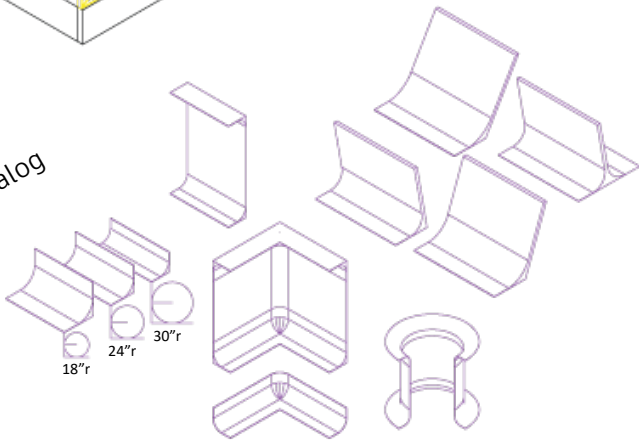
Drawing from Woodbury University's architectural typology while researching other established academic institutions such as University of Applied Arts Vienna, this project endeavors to craft a pioneering prototype for a novel architecture school.

With a student-centric approach, the institution places students in leadership roles, supported by a dynamic student union that empowers them to shape their education and campus experience. By prioritizing student engagement, the prototype seeks to enhance the overall student experience.

(E) Architecture Catalog



(N) Architecture Catalog
Cyclorama Wall



THE EVOLVING OF THE CYCLORAMA WALL CREATES THE PROGRAM AND BECOMES THE AESTHETIC OF THE PROJECT



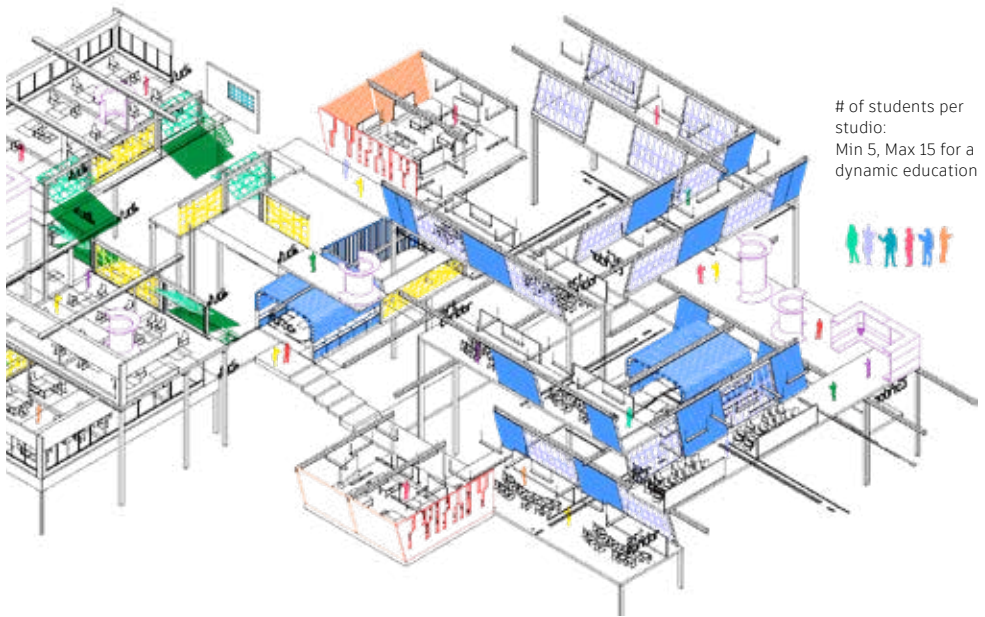
Program

Undergraduate, Graduate, Minors and Certificates on:

Visual Arts, Interior Design/Architecture, Architecture, study of materials and tools:

- Photography
- Carpentry (Wood)
- Glass
- Clay/Stone
- Metal
- Textiles
- Furniture making/design
- 2D – 3D Drafting. Students learn the software used by professionals
- Study of construction and representation

The flexible curriculum and varying course lengths are designed to equip the community with practical tools and skills that can be directly applied to job opportunities in the architecture field.



When theorizing about the school becoming a firm for students to gain experience and practice what they are learning, the main question was: How could that work?

Ideally, students would get paid hourly on a full or part-time basis, which in return would allow them to pay for school, housing, food, or school materials based on their needs. In a 4-year program, students would spend the first 2 years learning and working on their studio projects. In their last two years, students would research, develop ideas, create models, and design concepts. They would then work on drawings and revisions, presenting their ideas to school members.

Does this give flexibility to the student? Both undergraduate and graduate students could choose to participate, working in a collaborative environment. In-house professionals would lead the projects developed by students, who would collaborate with professionals on drawings and revisions. Ideally, this would allow students to earn AXP hours towards their path to licensure, build a more complex portfolio, and gain a deeper understanding of the overall meaning of architecture and the practice of architecture.

A NAP TO RECHARGE

Sleeping pods for students to slow down. Research documents that a six minute nap can sharpen thinking, improve memory, mood and mental flexibility



OFFICES FOR STUDENTS

Create a practice-based education.

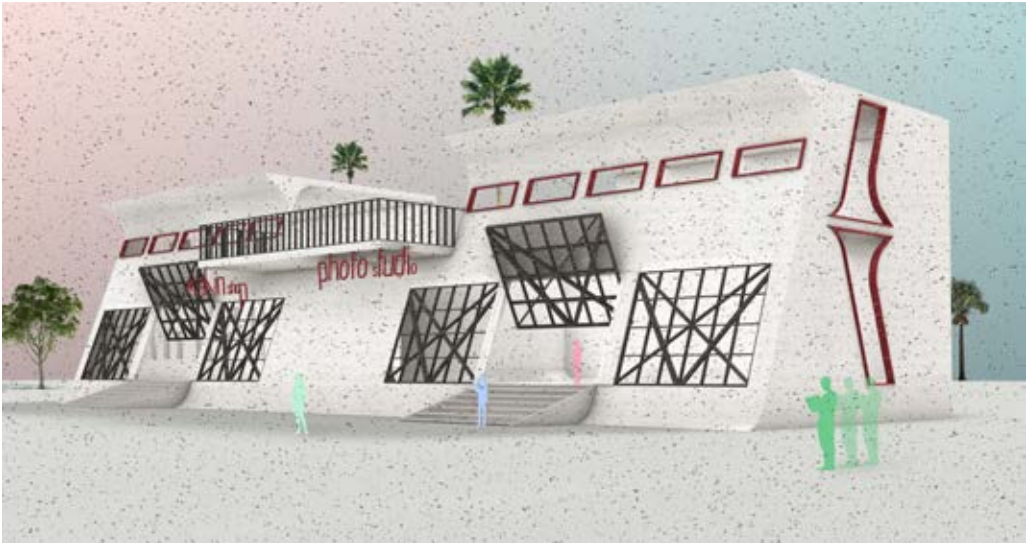
Offices for students to have student union meetings, and for students to create their own business, networking with professionals outside and inside school, create their own marketing.

REVIEWS & REVIEWS

Gallery space for student's work reviews



THE ART OF MAKING & THE CONNECTION W/ PHYSICAL MATERIALS.
Shop for wood, glass, ceramic, and metal works. Space opens to the outside providing indoor and outdoor workplaces.

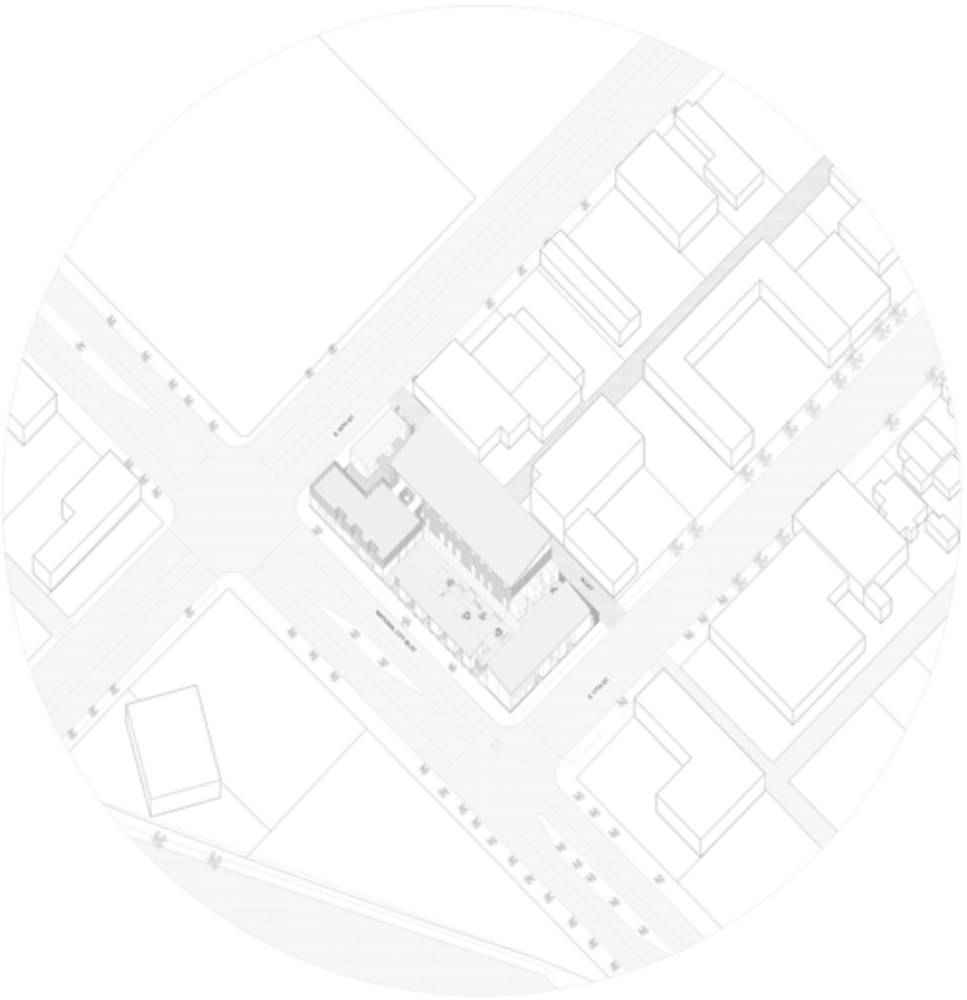


PHOTOGRAPHING THE PROCESS

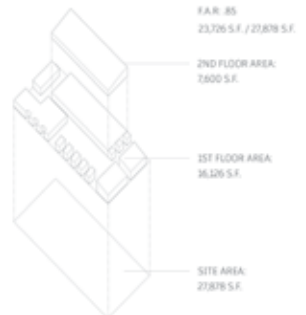
Students learn the art of photography enabling them to experiment with their architectural models under different light conditions. Open space with natural and artificial lighting for product, fine art, still life, time-lapse, and architectural photography. Built-in cyclorama wall, also known as infinity wall. Students will also take advantage of their surroundings exploring nature, landscape and urban settings photography.

4 Las Islas Community Center

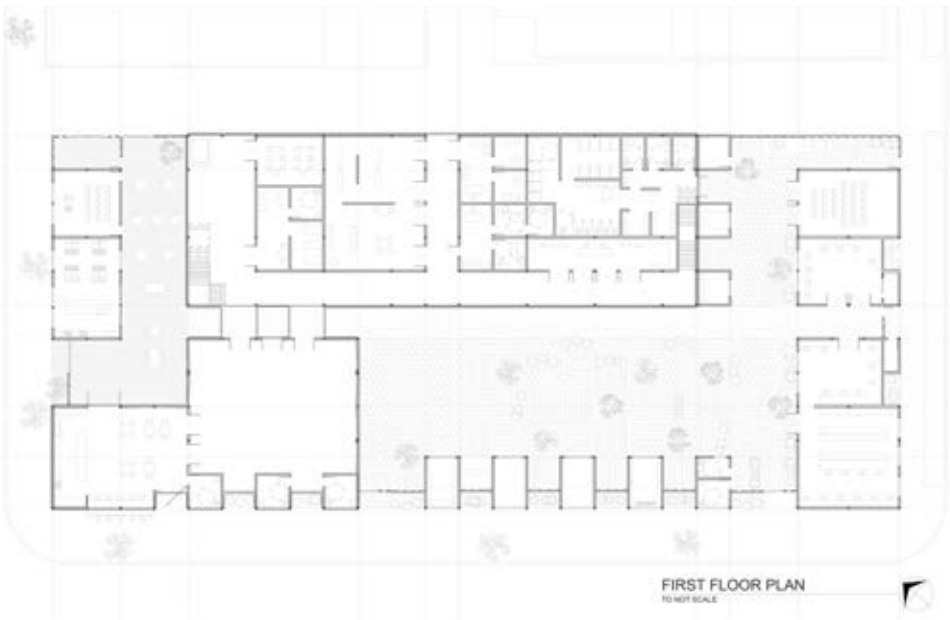


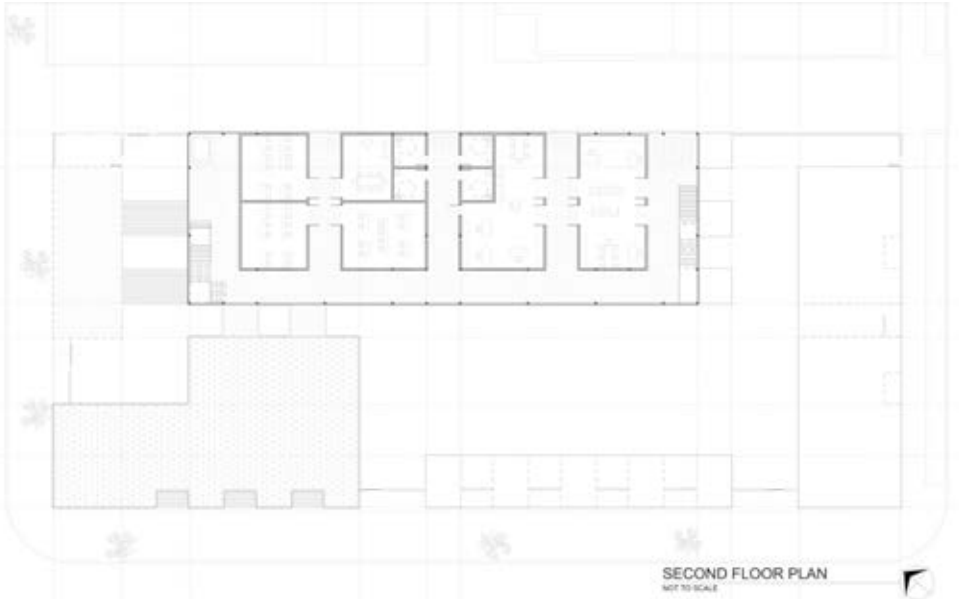


Introducing a vibrant hub at the heart of National City's bustling Mile of Cars: the innovative, new Las Islas Community Center. Meticulously designed to cater to the diverse needs of the community, offering a dynamic array of facilities and services aimed at fostering growth, connection, and well-being.



The program offers a spacious communal hall, where community members can gather for various events, celebrations, and gatherings. Adjacent to this hall, a charming restaurant/cafe offers a cozy atmosphere for socializing and enjoying delicious meals. For those with a passion for culinary arts, the center boasts a state-of-the-art culinary art school, providing aspiring chefs with the tools and knowledge to pursue their dreams.

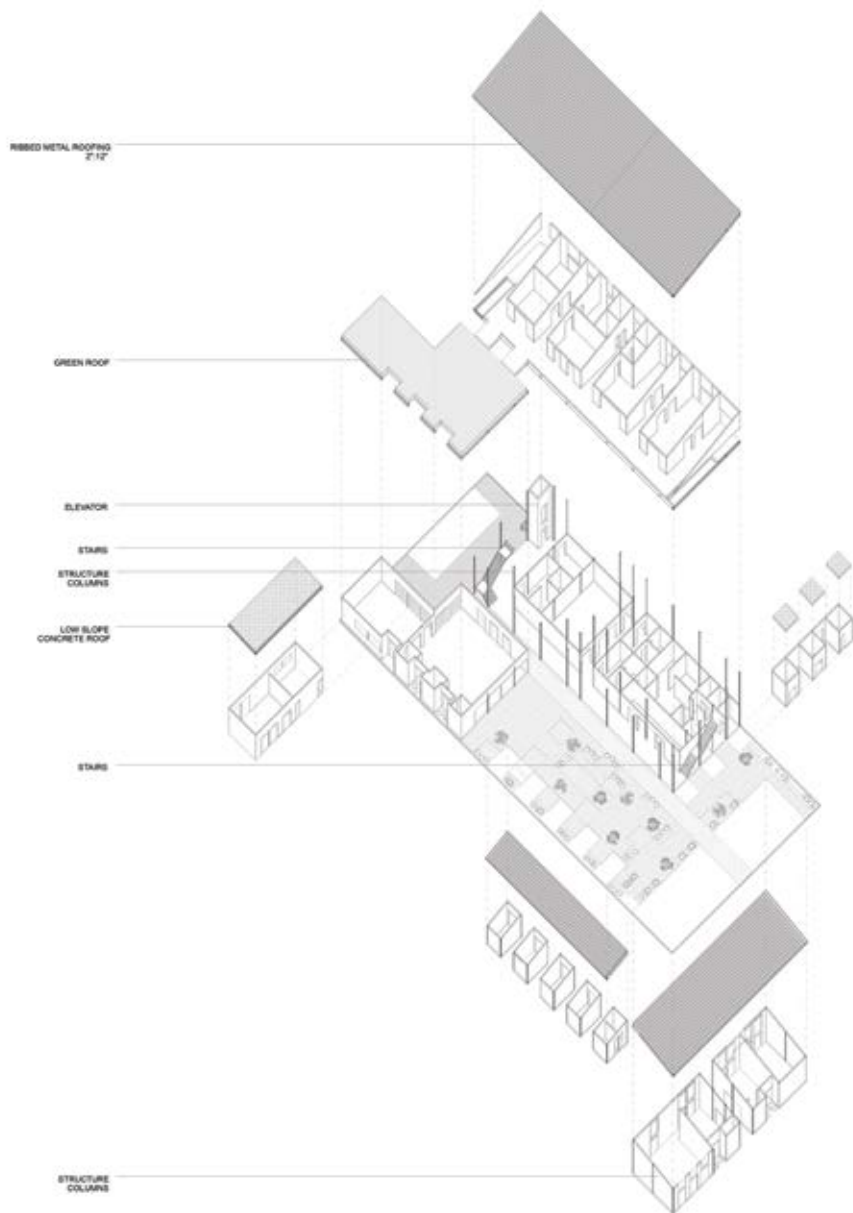




On a second level, are thoughtfully designed offices dedicated to ESL education, legal services, and administration, providing essential resources and support to empower individuals and families. Step outside and discover an inviting outdoor gymnasium, inviting residents to engage in physical activity and promote healthy lifestyles. Tech enthusiasts will find their haven in the dedicated technology and IT workshop, equipped with the latest tools and resources for innovation and skill development. Additionally, the center houses two healthcare facilities, catering to both physical and mental well-being through comprehensive therapy services.



With its diverse range of amenities and services, Las Islas Community Center stands as a beacon of opportunity and inclusiveness, enriching the lives of all who call National City home.

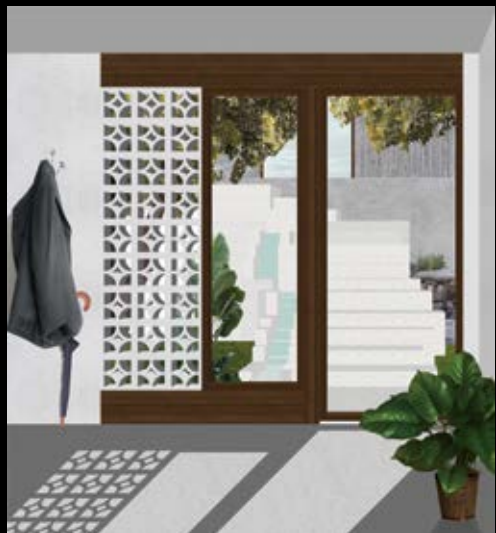


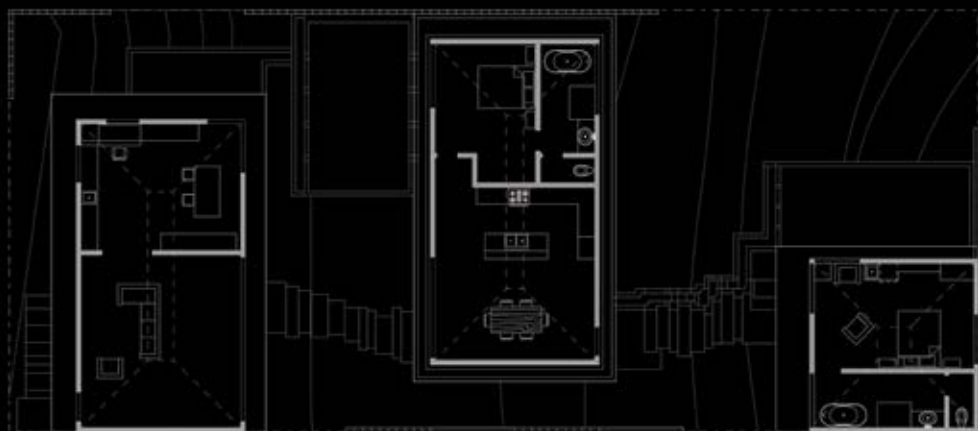
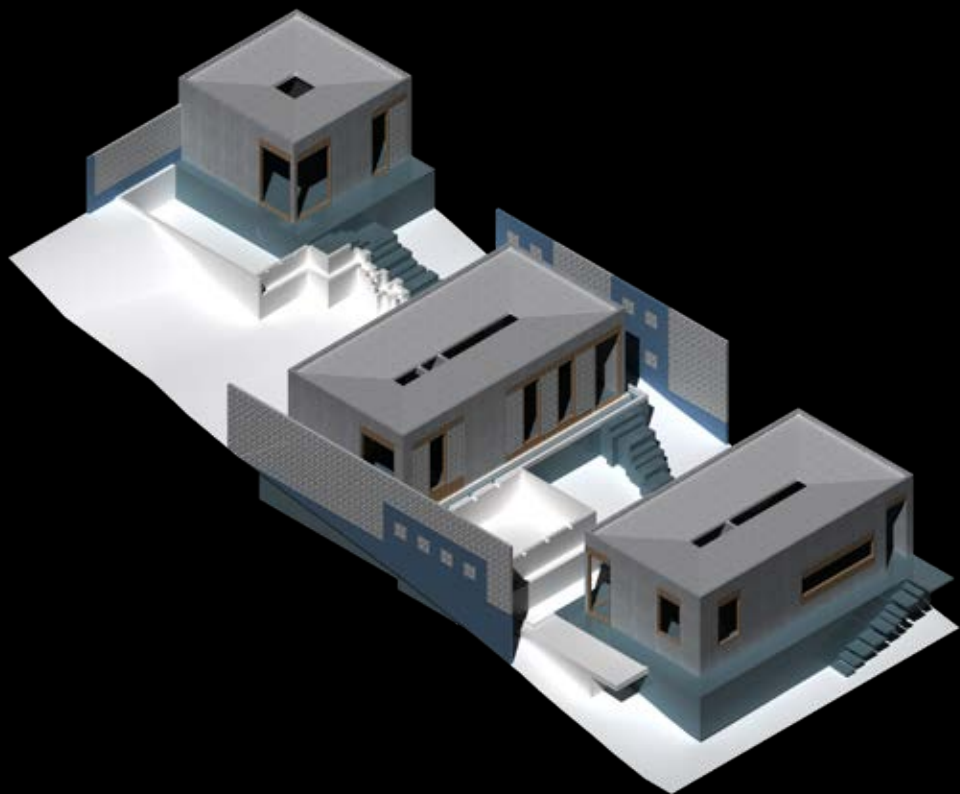
5 Central Serenity Residence



This innovative dwelling is designed to inspire creativity, comprising three distinct volumes interconnected by open-air steps. The first volume contains living room and studio space, fostering artistic expression.

The second volume harmoniously combines a modern kitchen/dining area with a tranquil bedroom retreat, creating a seamless living experience. Finally, the third volume offers a welcoming guest room, ensuring comfort and hospitality for visitors.







A residence that honors nature. Built with concrete that extends from its foundation to the roof, wood at windows and doors framing the landscape, and breeze blocks allowing playful shadows to invade the interiors.

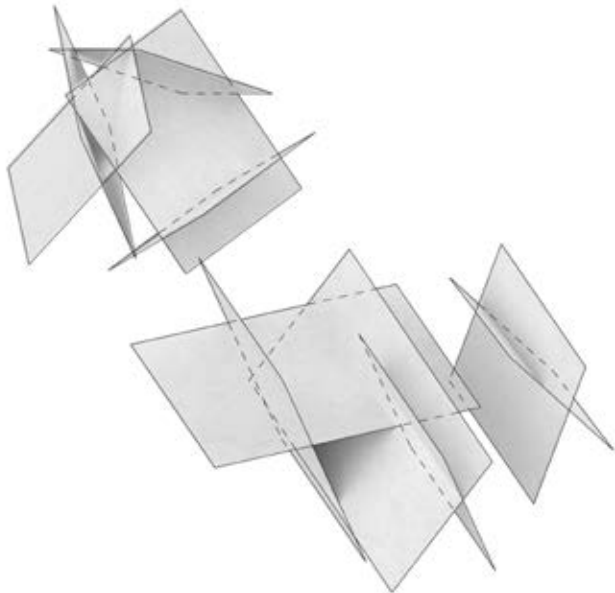
The project is situated in Seattle, Washington, the vignettes capture the city's distinctive climate and evoke its moody, atmospheric essence.



6 Paper Flows, Urban Flows

Participation in the 2024-120 hours student competition, this year the task was to create a National Art Museum for the city of Andorra based on the 2008 competition in which architects Jean Nouvel, Frank Gehry, Dominique Perrault, Zaha Hadid and Norman Foster participated.

The program overview included an entrance and reception area, exhibition rooms, lecture and multi-purpose hall, and classrooms. These were accommodated in two separate masses with the intention to connect the two volumes through underground spaces.





Enhancing both indoor and outdoor experiences is essential for nurturing walkability within the cityscape, facilitating spaces that encourage interaction among visitors, residents, and staff. It's imperative that the design remains mindful of the surrounding context to prevent any sense of detachment or alienation from the broader environment specifically in a small city like Andorra. Therefore, the buildings remain within the same height as the surrounding. The program was divided into two masses, creating a walkable path in between. The masses were generated through a series of angular "pieces of paper", their idiosyncratic forms drawing inspiration from the world of surrealist art. The materiality selected is simple, concrete and copper.





8 Visual Arts



The photographs were captured at Balboa Park's Rose Garden, immersed in the enchanting glow of the golden hour. Here, the delicate rose blossoms are embraced by a natural radiance, meticulously framed to showcase their vibrant hues and the mesmerizing highlights cast by the soft, golden light.



In this acrylic painting, a study on the vibrant hues created by the soft, golden light comes to life, echoing the photograph taken at Balboa Park's Rose Garden.





In this photograph, the three subjects establish distinct layers of depth within the composition. The airplane appears nearly parallel to the cable lines, with the cables also framing the airplane and palm trees.



In this charcoal study, the subject is positioned on a serene ocean backdrop, working with the manipulation of loose charcoal to evoke the texture of water and the expansive sky. A distinct contrast emerges at the horizon, delineating the boundary between the two elements with clarity.

In this acrylic study, mountain ranges are depicted, creating a sense of depth and perspective through the manipulation of light and shadow. Additionally, an exploration of light and shadow brings to life a group of clouds hovering above the picturesque landscape, while the vegetation serves as a study of textures, adding depth and complexity to the composition.



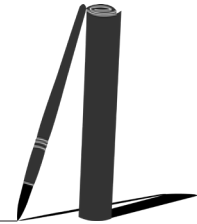
The photograph was captured in the coast of Greece in Sounion to the south of Athens. Capturing the Temple of Poseidon above the horizon and the blue waters of Greece.



24 A. De León

Alexandra G. De Leon

Associate AIA
(619) 327 8011
adeleonartarch@gmail.com
adeleonartarch.com
@adeleonartarch



PROFILE

Aspiring architect, interior designer, and artist dedicated to creating designs through research and contextual understanding, with a strong focus on sustainability. Currently studying for the LEED Green Associate credential, inspired by the arts and sciences to craft designs that connect with nature and humanity, contributing to communities through thoughtful designs that foster connection and elevate user well-being.

EDUCATION

NewSchool of Architecture & Design | NAAB Accredited
Master of Architecture | June 2024

Woodbury University, San Diego | STEM, NAAB Accredited
Master of Architecture, coursework | Aug 2020 - May 2022

The Art Institute of California, San Diego | CIDA Accredited
Bachelor of Science, Interior Design | June 2018

Southwestern College
Coursework | Aug 2014 - June 2015

EXPERIENCE

Architectural Designer/Drafter | Kevin Rugee Architect Inc. | July, 2018-March, 2020

Engaged in collaborative efforts to produce construction documents for remodels, new construction, historic, and non-historic residential projects within the urban landscape of Coronado. Conducted precise site measurements, understood ADA and code requirements, and organized building details and materials. Also created physical and digital 3D models for improved project visualization.

Interior Design intern | Maxion Design | January-March, 2017

Under the guidance of a licensed architect and interior designer, played an integral role in developing interior design plans, including demolition, floor, and furniture plans, as well as material specifications, while conducting comprehensive site measurements for a diverse portfolio of projects encompassing a racketball club, residential property, and dining venue.

SOFTWARE

Rhino
Autodesk AutoCAD, Revit, 3ds Max, Navisworks
Adobe Photoshop, InDesign, Illustrator
SketchUp Pro, Autodesk FormIt
VRay for Rhino & 3ds Max
Procure, Microsoft Office, Google Applications

TECHNICAL

Design research
Problem solving
Schematic design
Design development
Specifications
Hand rendering/drafting

ACHIEVEMENTS

120 Hours student competition participant, 2024
Artwork published in Drawn4 by Capsules Book, 2020
IIDA Fashion Show participant, 2017

LANGUAGES

English, Proficient | Spanish, Native