

Jinghan Wang

Columbia M.Arch + Bath B.S Arch

arch.jinghanwang@gmail.com 718.501.3095

Professional Projects

Luxury Mixed-use Apartments

Site Planning

Role

Architectural Intern for RAMSA, New York

- assisted in drafting plans, sections; developing the 3D digital model, area schedules
- assisted in preparing presentation materials
- made a 3d-print model

Others Involved

Daniel Lobitz, Gemma Kim (project lead)

Zoey Yao,

Christine Song

Year

2023

Location

West Palm Beach, US

Status

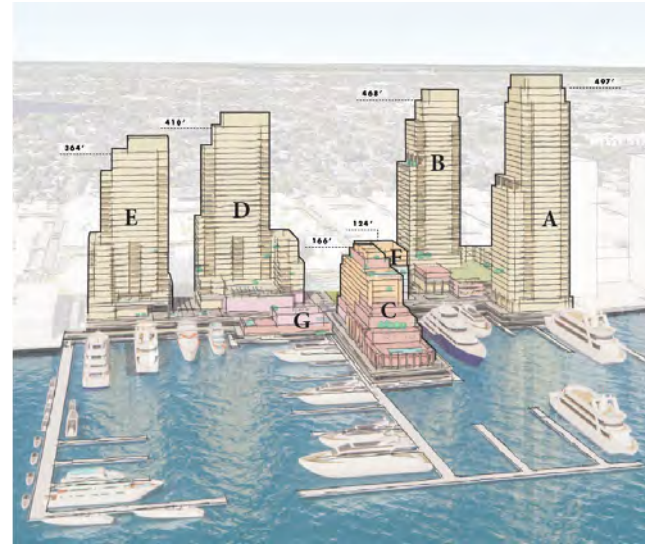
Confidential

Program

Mixed-use Apartments

Area

2,338,914 SF



Shanghai Cityland Office Tower

Concept Design

Role

Architectural Assistant for BDP, Shanghai

- conducted site visit and analysis
- developed massing models
- managed reports and presentation files
- developed landscape strategy

Others Involved

tianyi gu (project lead)

Qibing Jiang

liru chen

Year

2019

Status

completed in 2024

Location

shanghai, china

Program

office

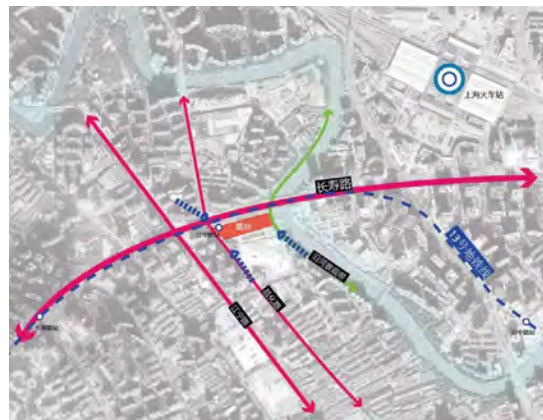
Area

141,540 SF

SITE MAPPING



Longevity Bay - Prominent Location



Transportation Analysis

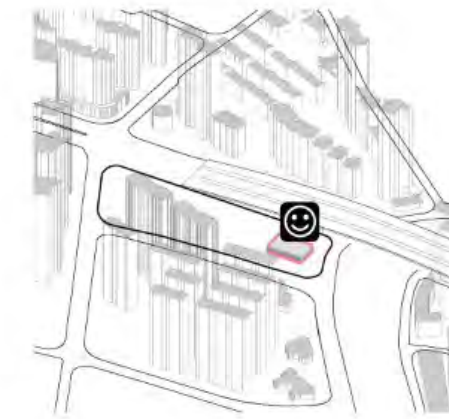


SITE ANALYSIS CONCLUSION

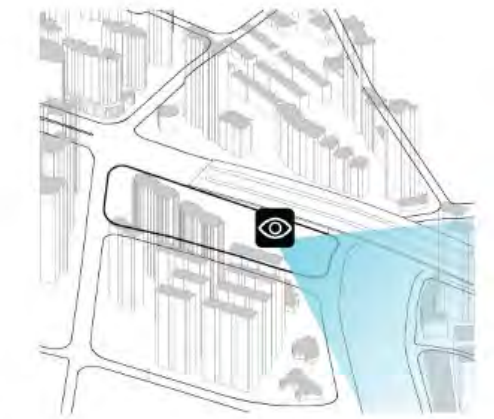
TRANSFORMING NEGATIVE ELEMENTS OF THE SITE INTO POSTIVE IMPACTS & UTILIZE THE ADVANTAGE OF THE SITE



North Side Open to the City

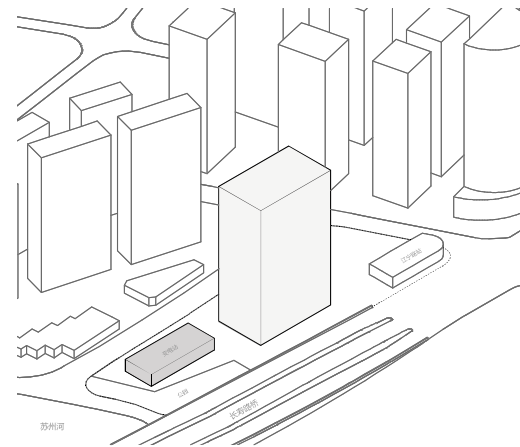


Minimize the Negative Impact of the Transformer

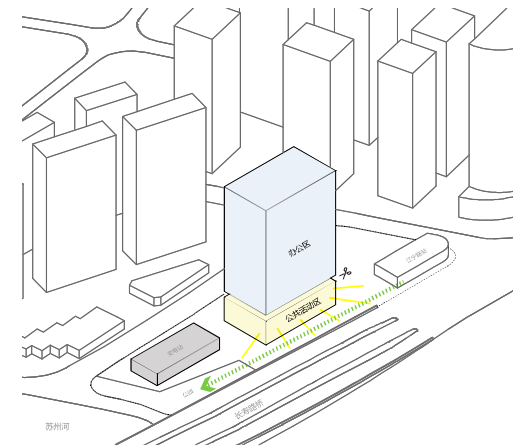


Optimize the Advantage of Landscape View

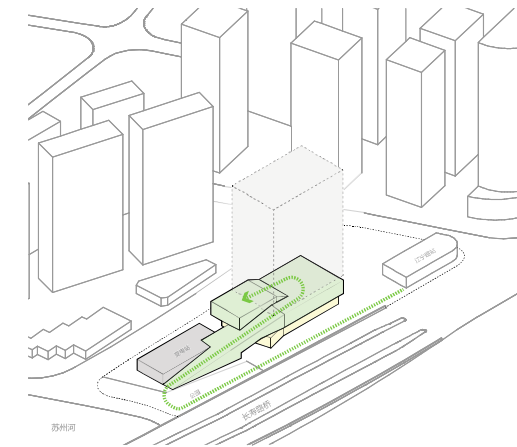
MASSING GENERATION



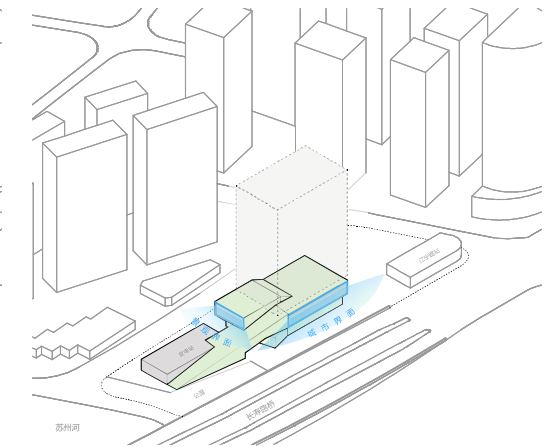
01 Define the Position and the Height of the Tower



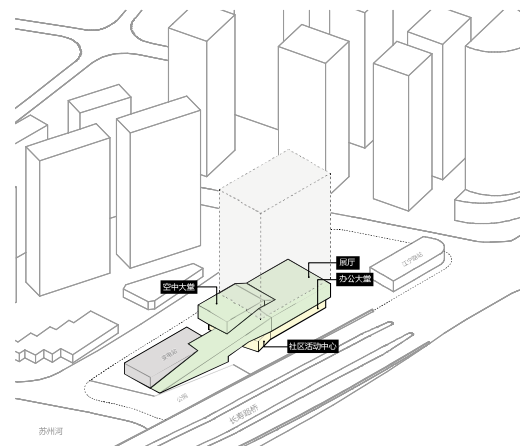
02 Activate North Corridor, Separate the Public Community Space with the Office Space



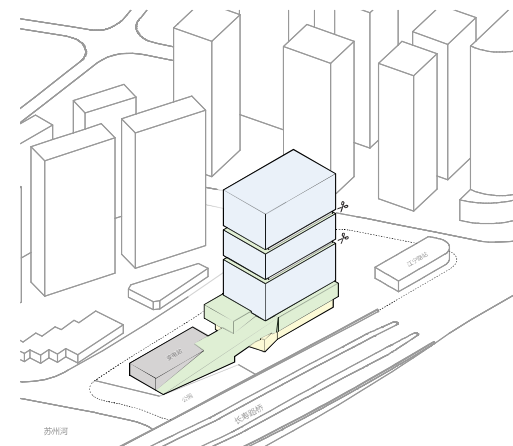
03 Continue the Green Corridor to the Tower and Form Landscape Ramp



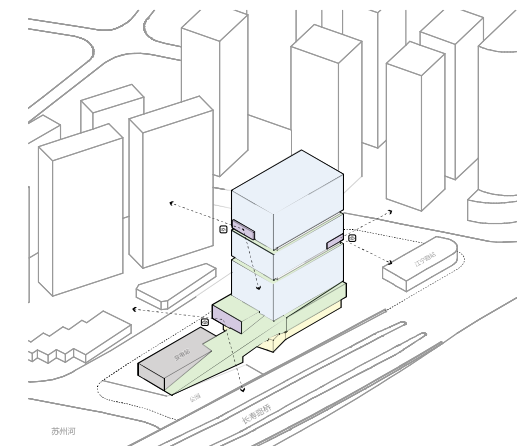
04 Form City Interface and Landscape Interface



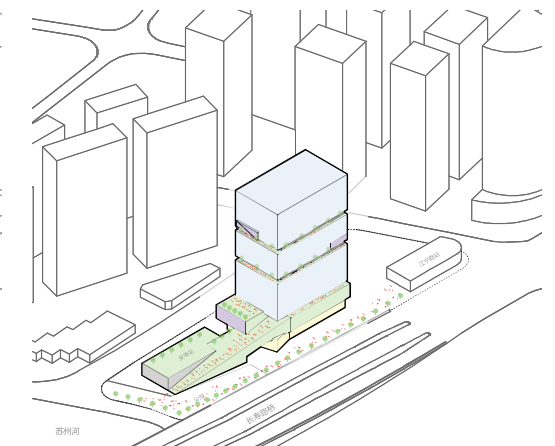
05 Place in Various Public Functions



06 Cut the Tower Horizontally into Three Slices



07 Create Special Viewing Windows



08 Final Outcome

Monmouth Comprehensive School

Design Development in Revit

Role

Architectural Assistant for BDP, Bristol

- Assisted in modelling and drafting in Revit
- Built a physical model

Others Involved

Chris Kenny (project lead)

Beatriz Herrero Toribio

Zhongyi Shi

Year

2015

Status

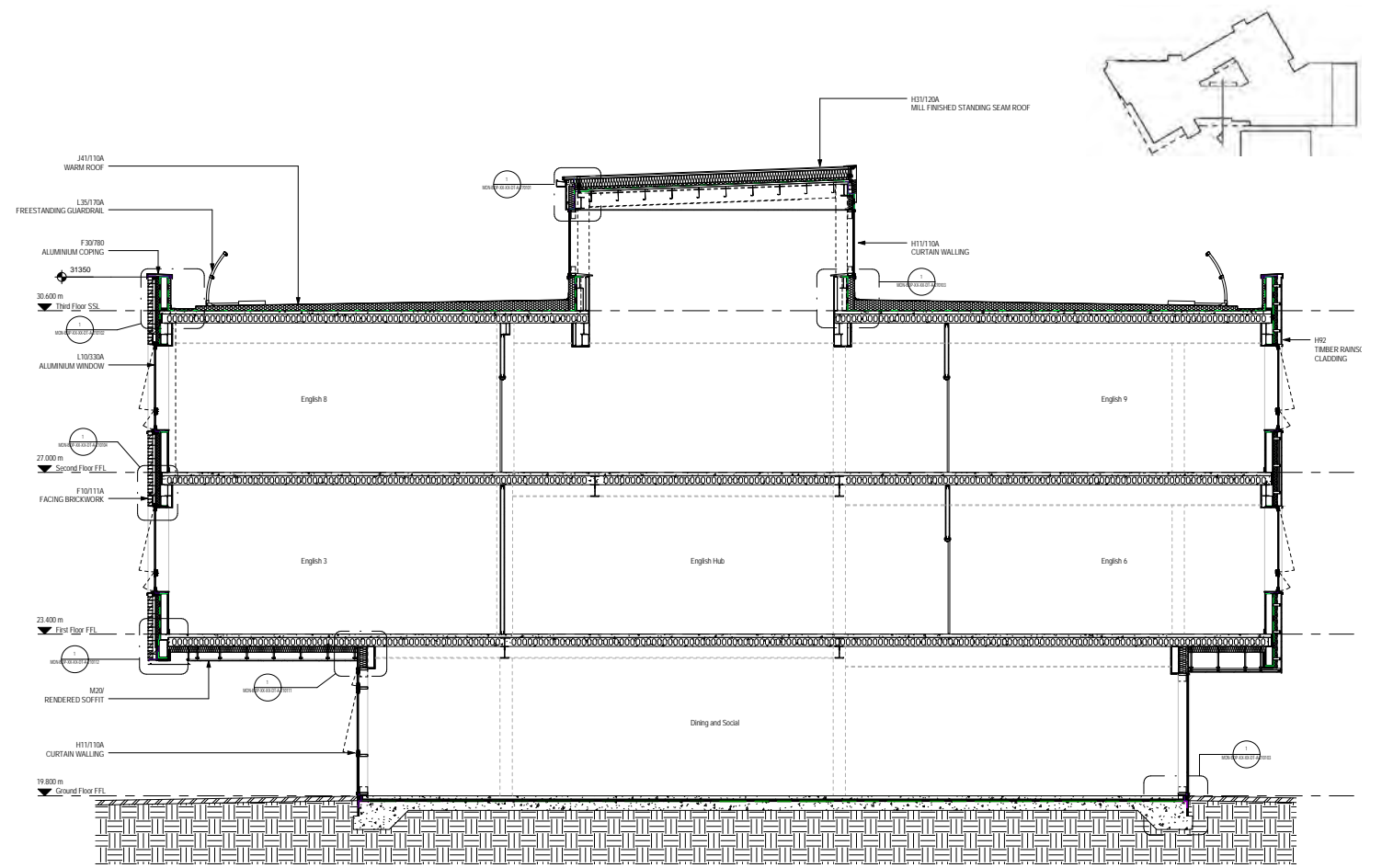
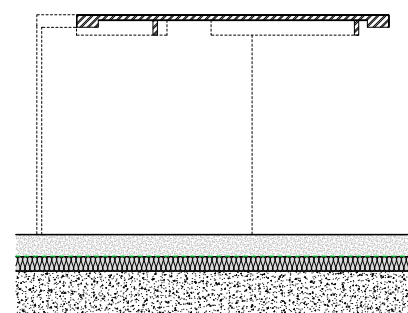
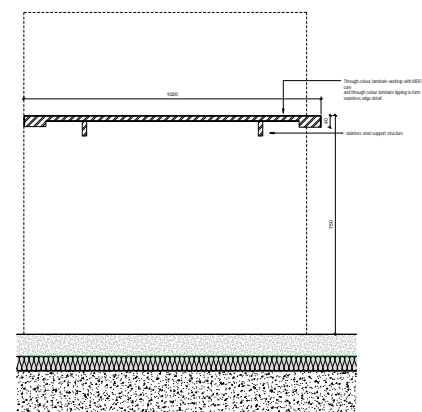
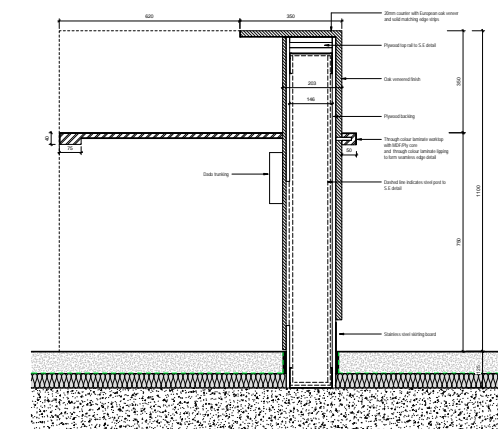
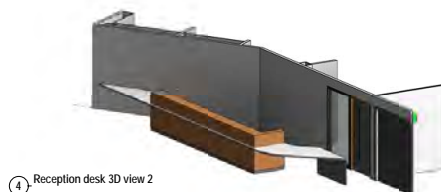
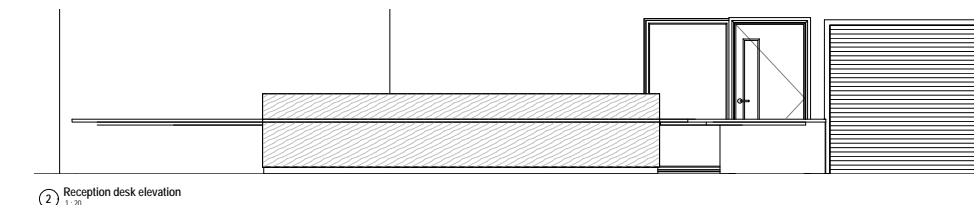
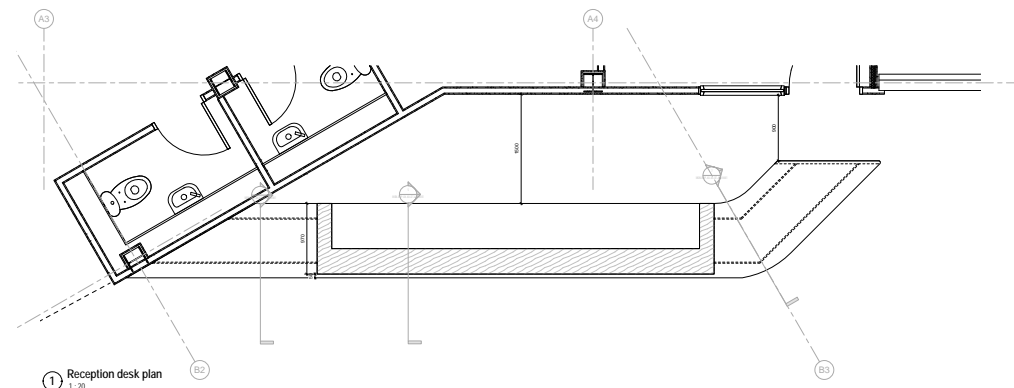
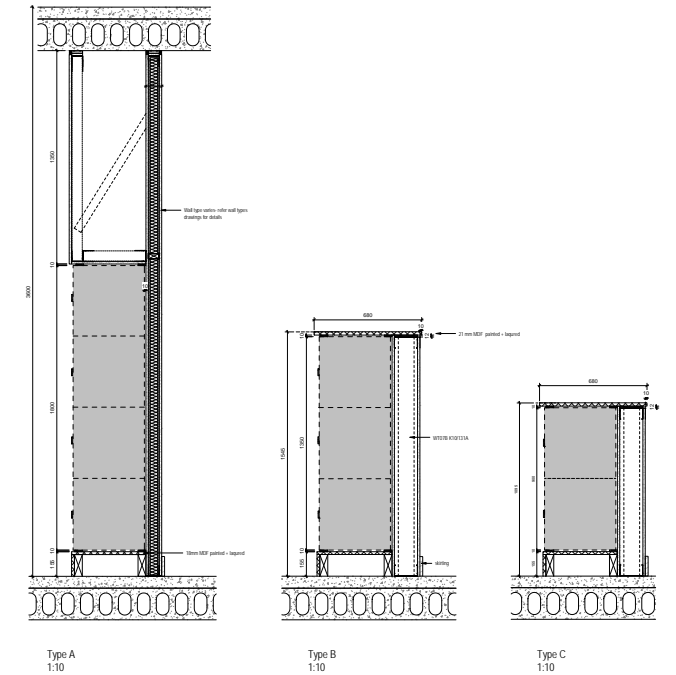
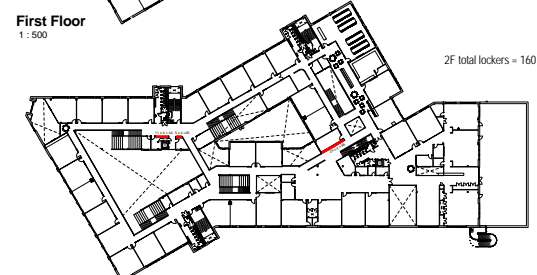
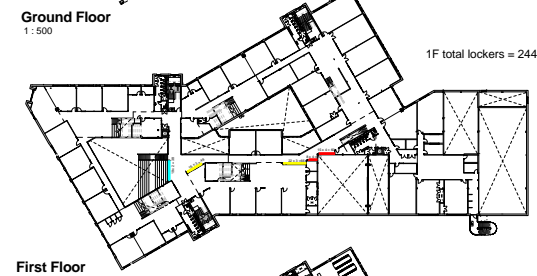
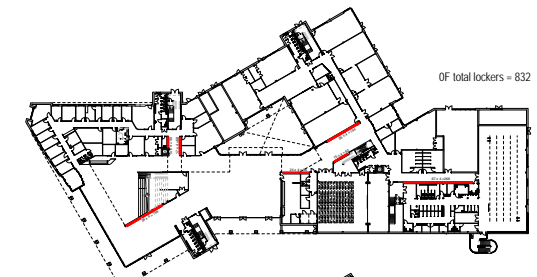
Completed in 2018

Location

Monmouth, Wales, UK

Area

140,000 SF



Stick'n'Sushi Interior Design

Construction Documentation in CAD

Role

Architectural Intern for Neri & Hu

- assisted in drafting the whole construction set
- developed the noren fixing system and restroom
- re-organized the office material library
- contacted various suppliers

Others Involved

erika lanselle (project lead)
laia maritinez sitja
Ana Ameyugo Martín

Year

2016

Status

completed in 2017

Location

Victoria, London, UK

Program

interior F&B

Area

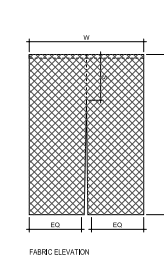
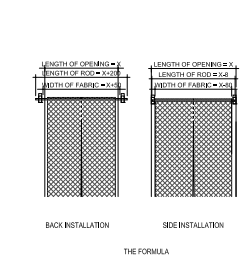
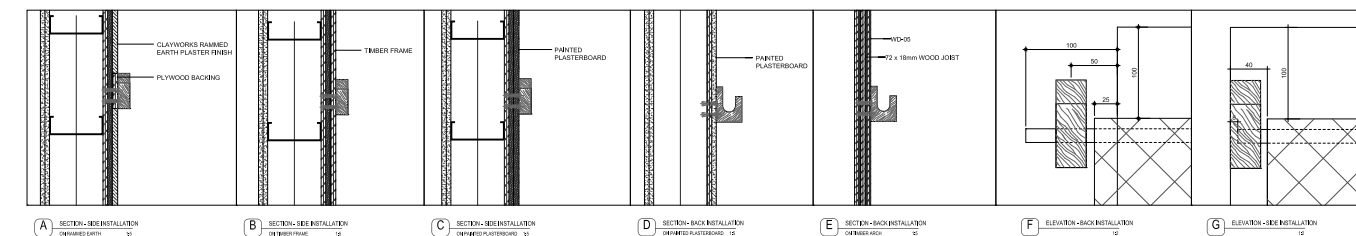
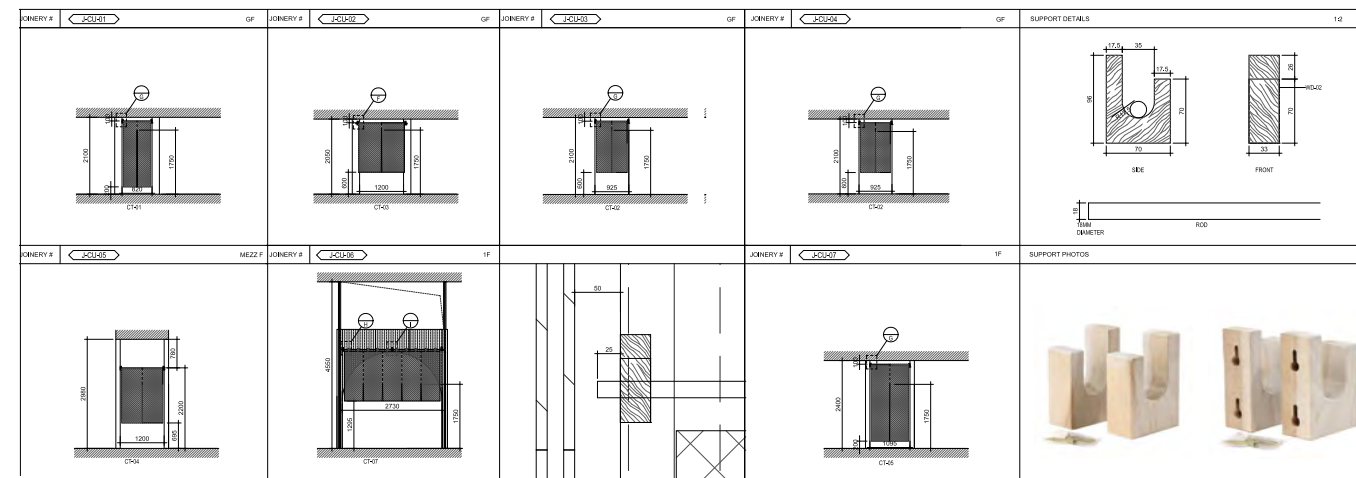
5100 SF



RESTROOM DESIGN AND DETAILING

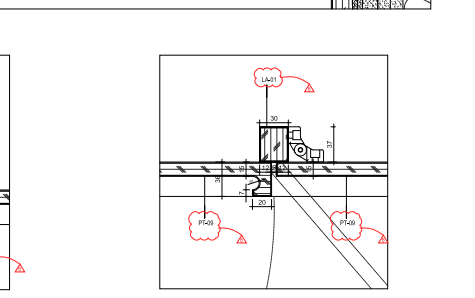
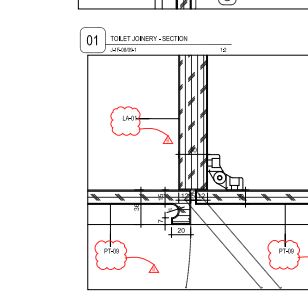
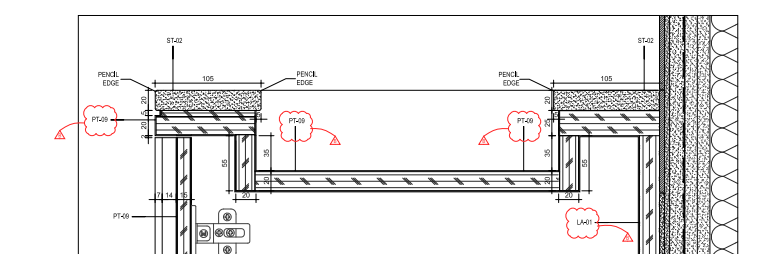
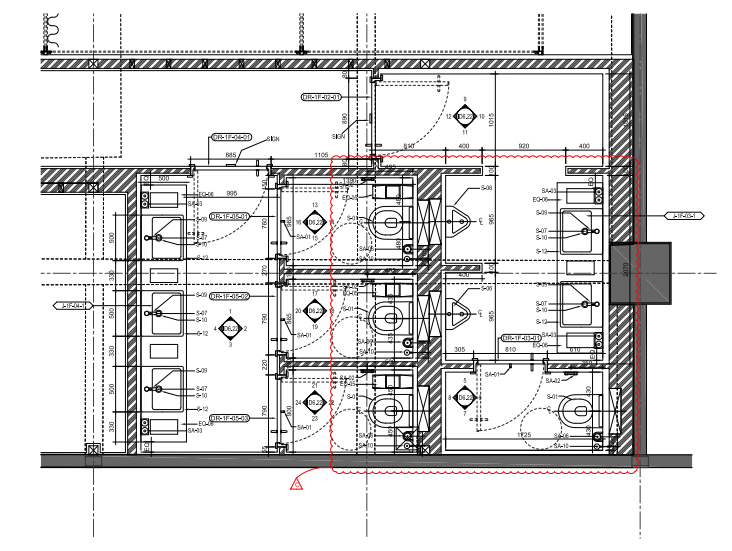
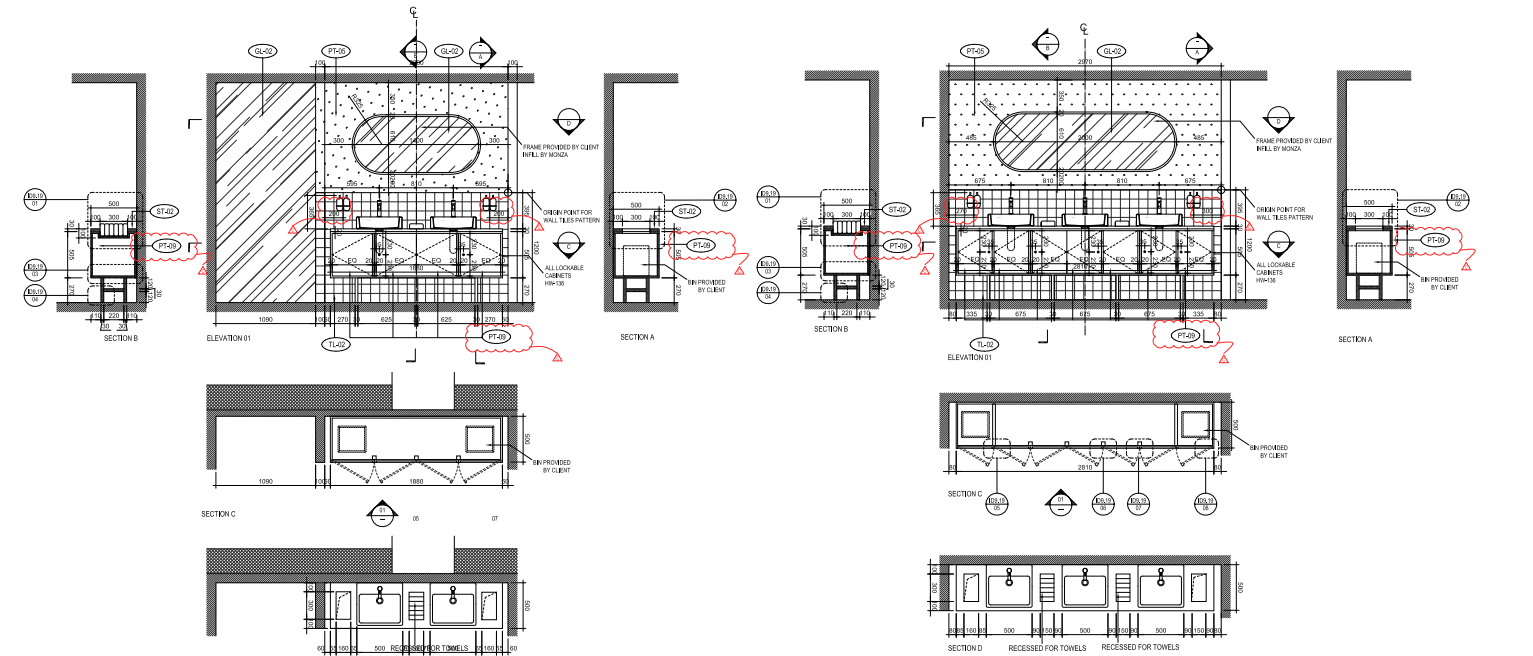
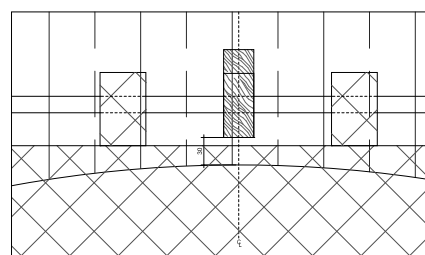


NOREN FIXING SYSTEM



		FIXINGS				FABRIC		
CODE	LOCATION	LENGTH OF ROD	FIXING TYPE	FIXING DETAIL	FFE CODE	WIDTH	LENGTH	SEAM
JCH41	GF	812	SIDE	B.G	CT-01	740	1880	250
JCH42	GF	1400	BACK	D.F	CT-03	1250	1350	200
JCH43	GF	917	SIDE	B.G	CT-02	845	1400	250
JCH44	GF	917	SIDE	B.G	CT-02	845	1400	250
JCH45	MEZZ.F	1192	SIDE	A.F	CT-04	1120	1505	450
JCH46	IF	2780	BACK	E.H	CT-07	2010	1355	900
JCH47	IF	1087	SIDE	C.G	CT-06	1050	2100	550

NOTE: ALL DIMENSIONS TO BE VERIFIED BASED ON SITE DIMENSIONS.

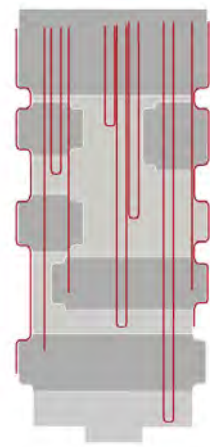


01 ENLARGED TOILET PLAN

06 TOILET JOBERY-SECTION

05 TOILET JOBERY-PLAN

Academic/Personal Projects



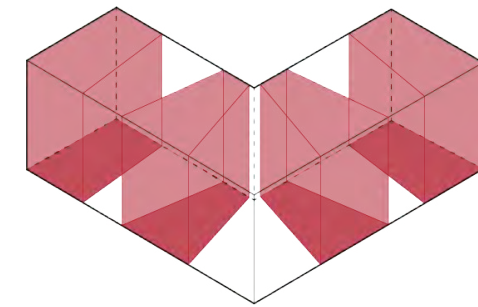
EVERYWHERE LIBRARY



UNCERTAIN DENSITY



ARCHWAY TO OXFORD



SCHOOL WITHIN SCHOOL

Everywhere Library

Challenge the Traditional Library Typology
Library with Delivery System



Personal Project

Project Info:

Year

2020

Location

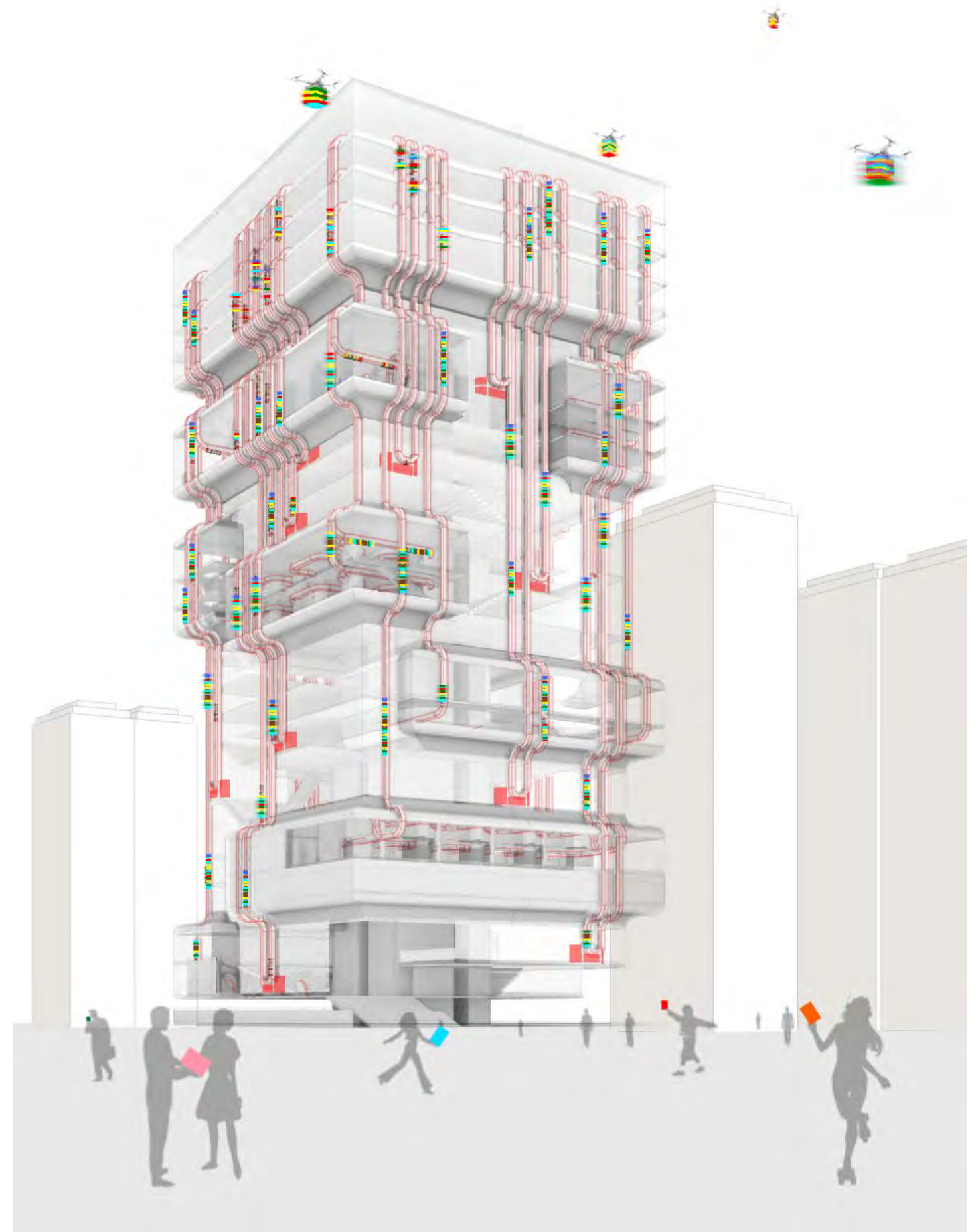
everywhere

Topics

typology intervention

Description

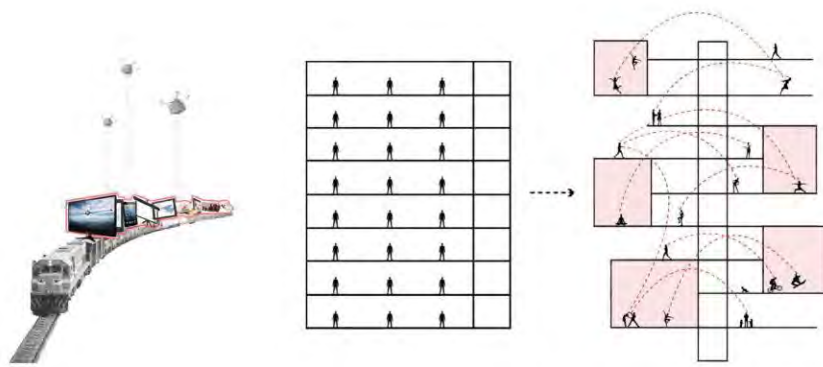
The project envisages a future library typology where people and knowledge are exchanging in a fast pace. Library is no longer perceived as a static and silent reading place, rather, it brings various programs from the city into a single entity to encourage cross-disciplinary learning in all possible ways.



In mega cities like New York, Tokyo, Hongkong, Shanghai, the majority of the population lead their lifestyle in a fast pace.

What if the experience in a library is no longer a static, solitary one, but we can be in a dynamic and fast-exchanging way to exchange knowledge?

This is the starting point of the project.



PAST

"WE ARE RESTRAINED TO SIT AND READ QUIETLY UNDER RIGID LIBRARY RULES."

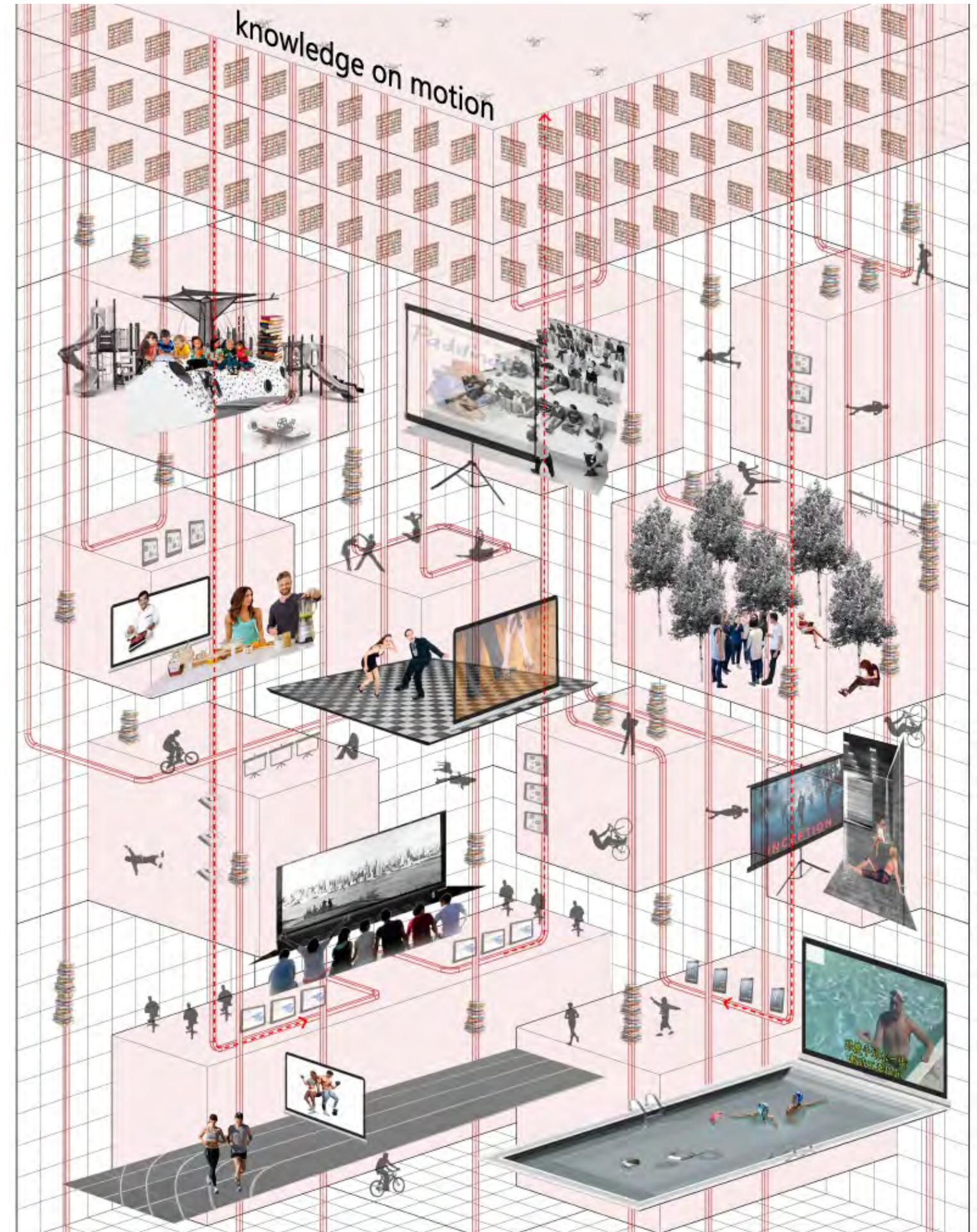
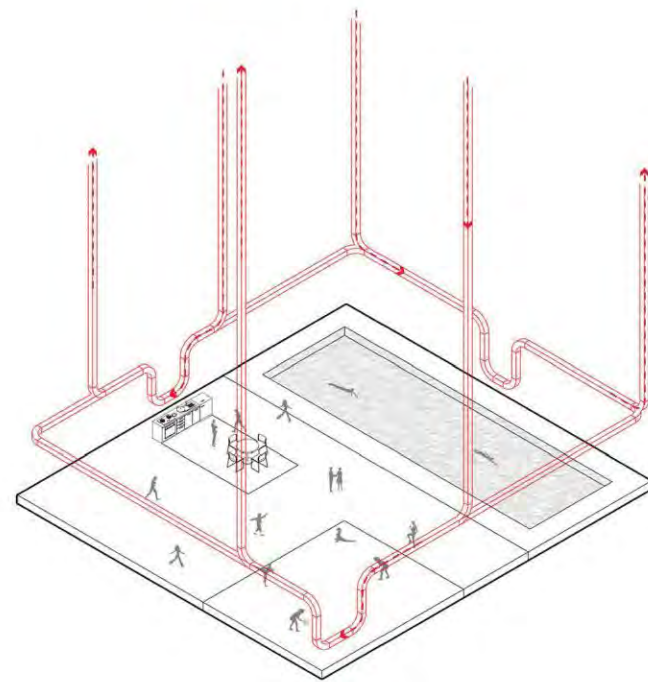
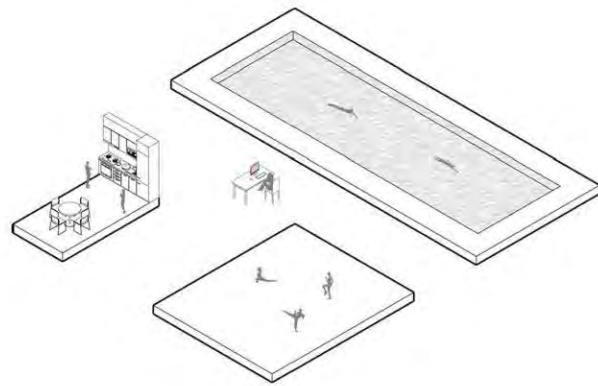


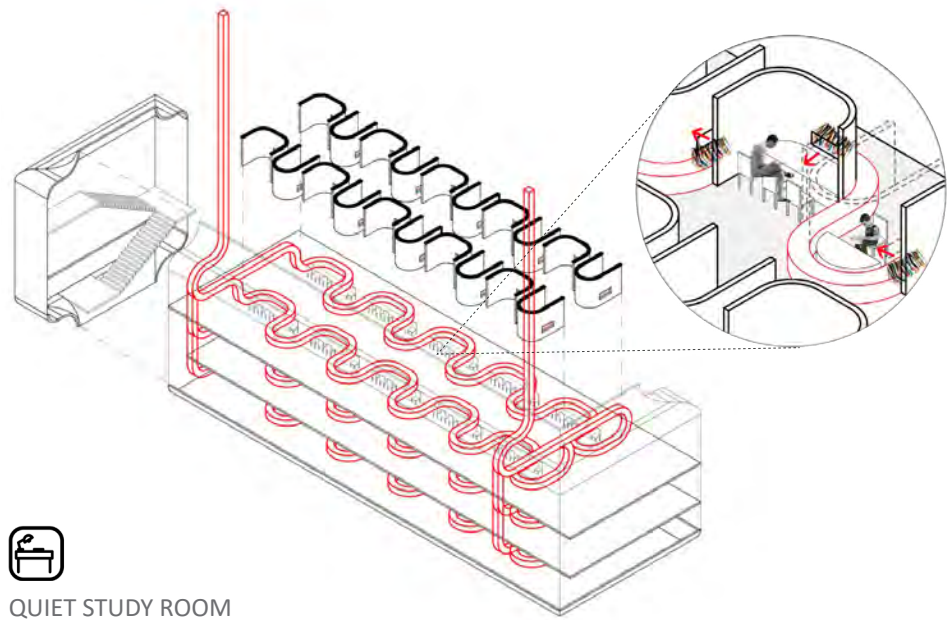
FUTURE

"WE CAN GRAB KNOWLEDGE EVERYWHERE FREELY AND AT HAND."

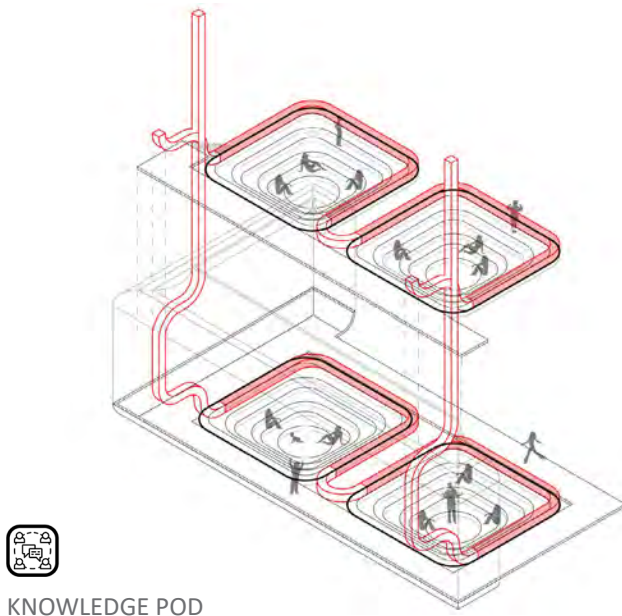


- KNOWLEDGE
- KNOWLEDGE PATH
- KNOWLEDGE TUBE

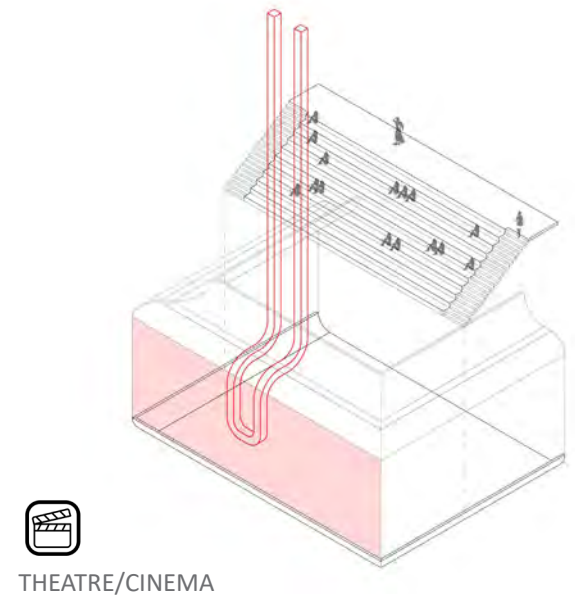




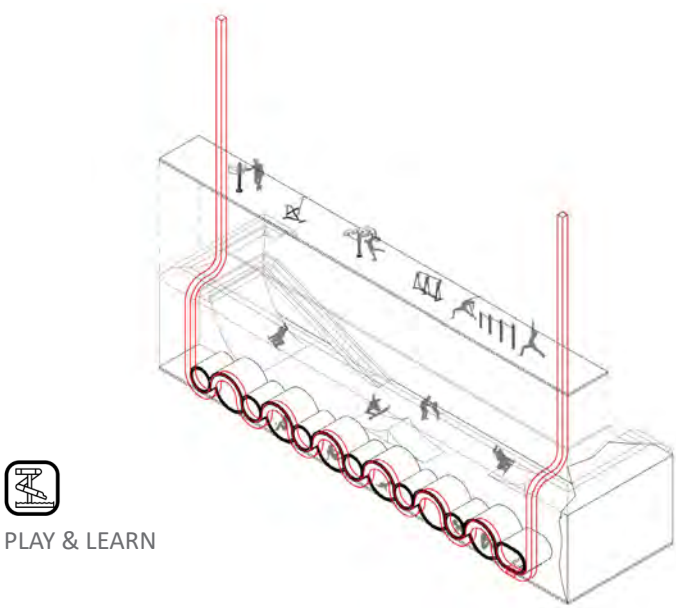

QUIET STUDY ROOM



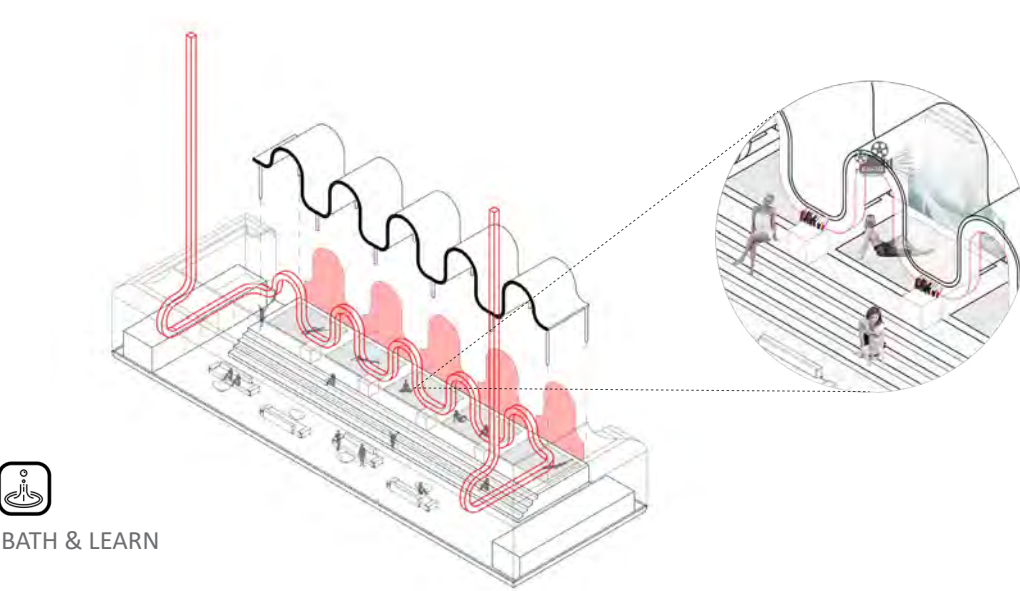

KNOWLEDGE POD



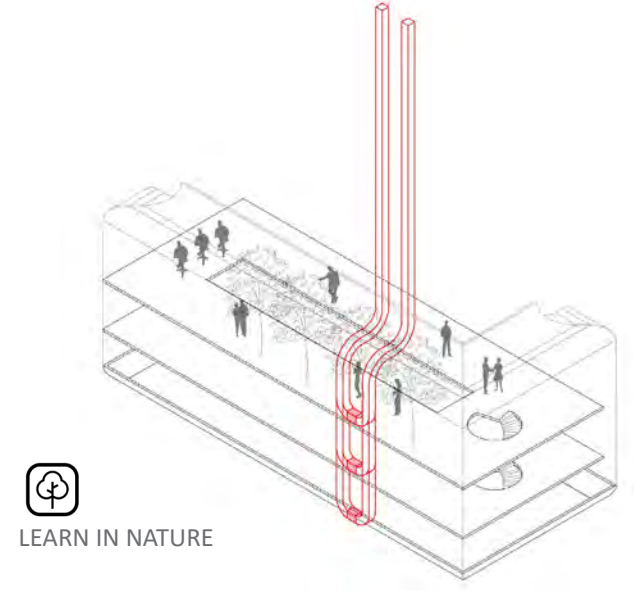

THEATRE/CINEMA



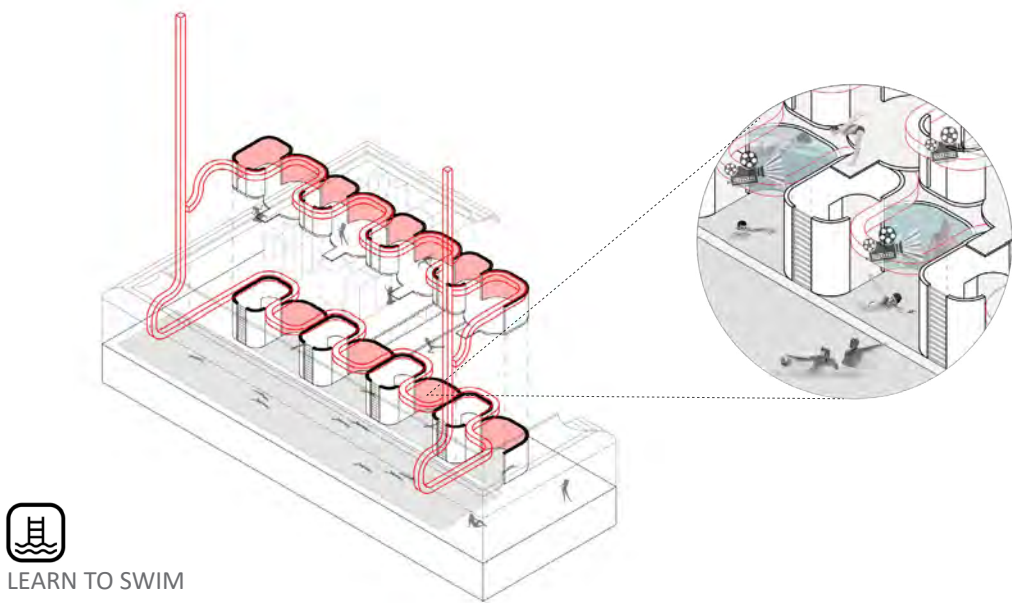

PLAY & LEARN




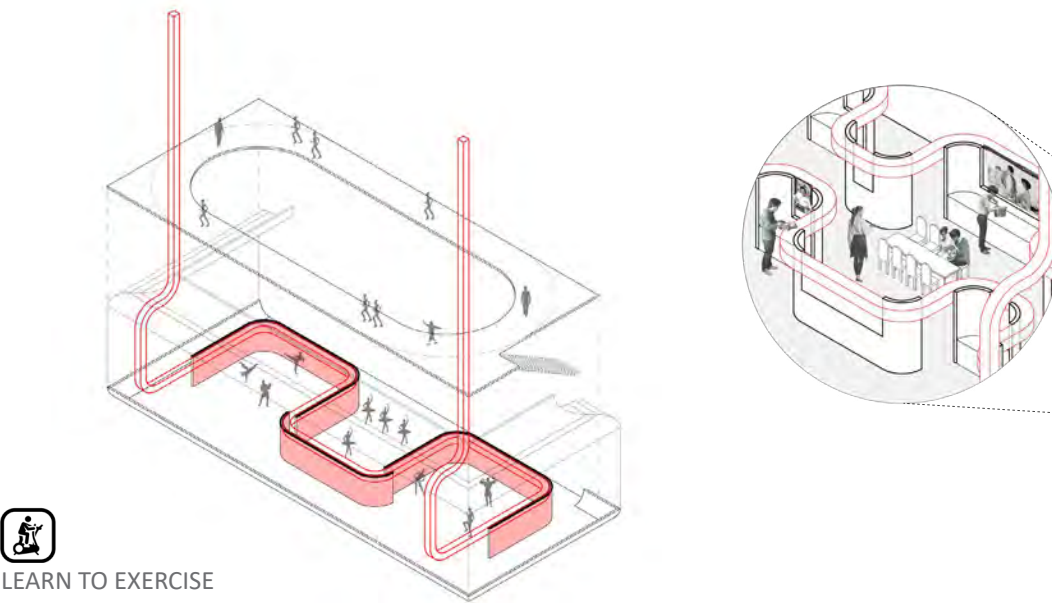

BATH & LEARN





LEARN IN NATURE



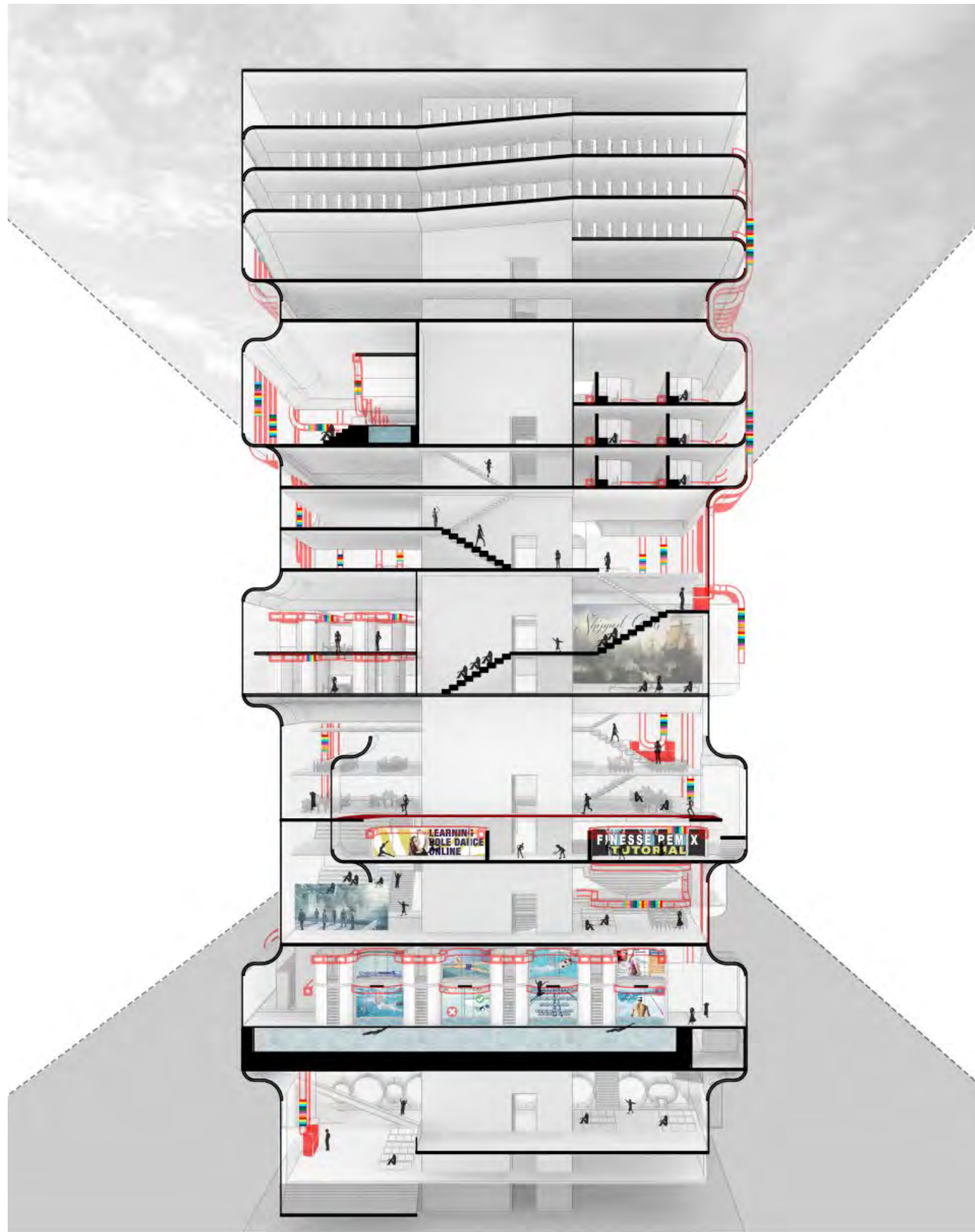

LEARN TO SWIM




LEARN TO EXERCISE




LEARN TO COOK



Uncertain Density

Design with/for Uncertainty
Adaptive Urban Ecological Community Space



M. Arch Studio
Columbia University GSAPP

Project Info:

Year

2023

Status

academic project

Location

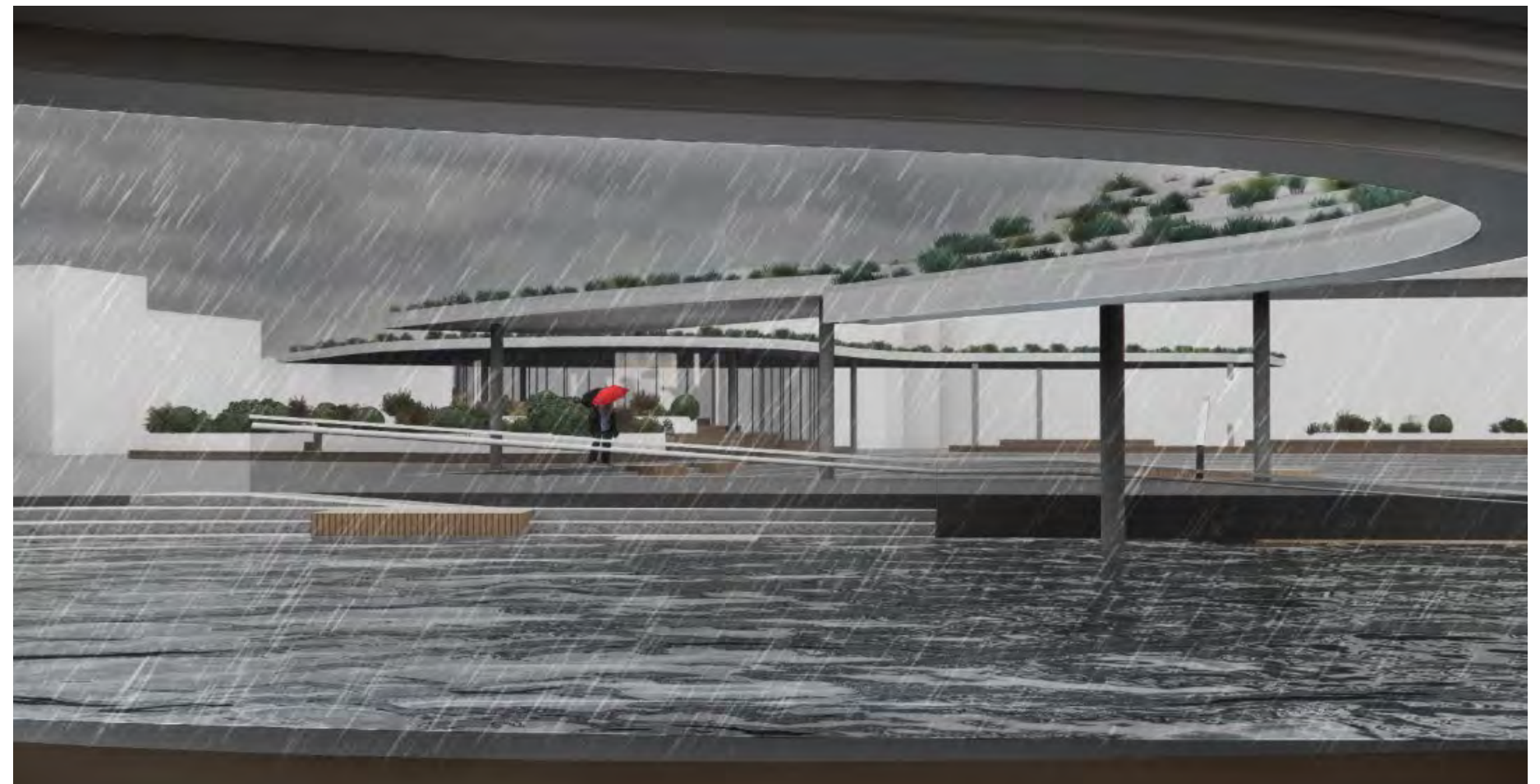
south end, bridgeport, united states

Topics

urban voids; climate mitigation; mixed-use

Description

The project is a prototype for underutilized lands to foster community social life with a hybrid of building, landscape and public plaza, which performs differently under different weather conditions.



EXPERIMENT



What is the experiment

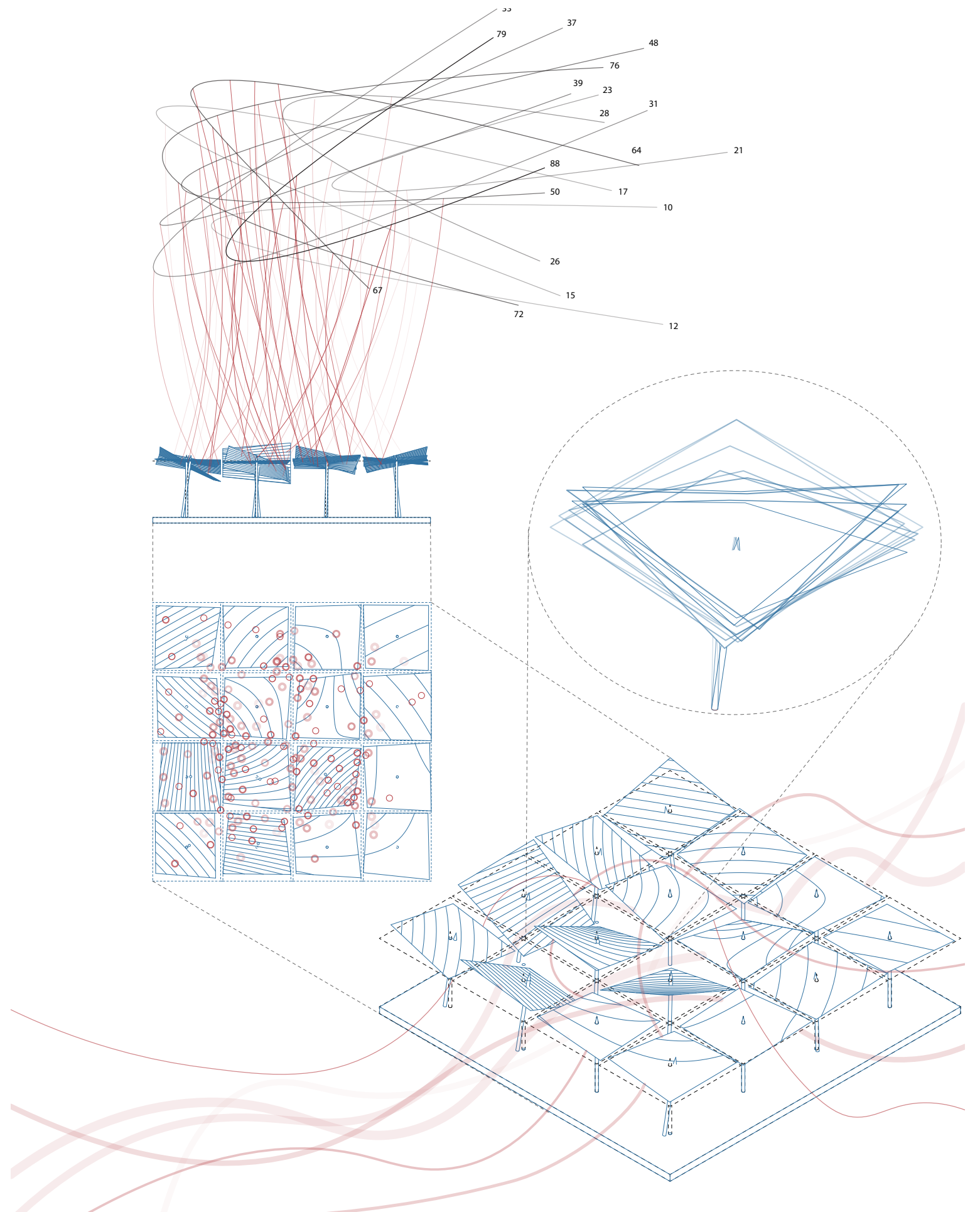
The experiment explores the notion of “Design with Uncertainty”. The photos documents the deformation of the paper by dropping coffee powder onto ice cubes, coffee-colored water then dripping down onto the paper. It deforms but never cracks. It presents the idea of an uncertain state resulted from a set of certain rules - fixed grid-shaped paper; fixed areas; coffee powder is dropped from a certain height with steady movement.

What is the drawing

The drawing is a documentation of the experiment under a set of criteria - a 36”x24” sized paper, two colors, no color block. It illustrates the process through plan, elevation, isometric, perspective etc. By incorporating the dimension of “time” into the drawing, it uses different line types, line weights and transparency to showcase the movement of the form through time.

How does the experiment inform the design

The regular grid becomes a literal approach for picking up sites on the city’s abundant parking lots. The coffee drops become a literal reference for adding density to the empty lots. The deformation of the paper inspired the design to work with contours on the ground. Such literal formal inspiration can be traced through in the design process.



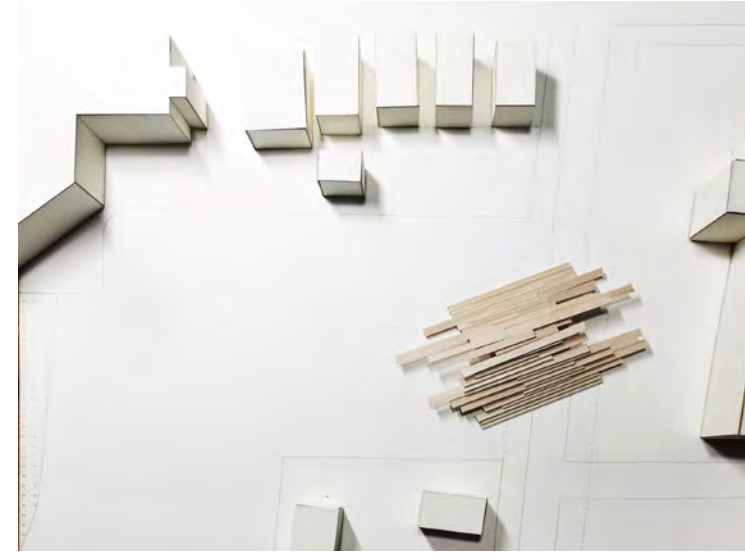
CONCEPT MASSING



UNCERTAIN DENSITY

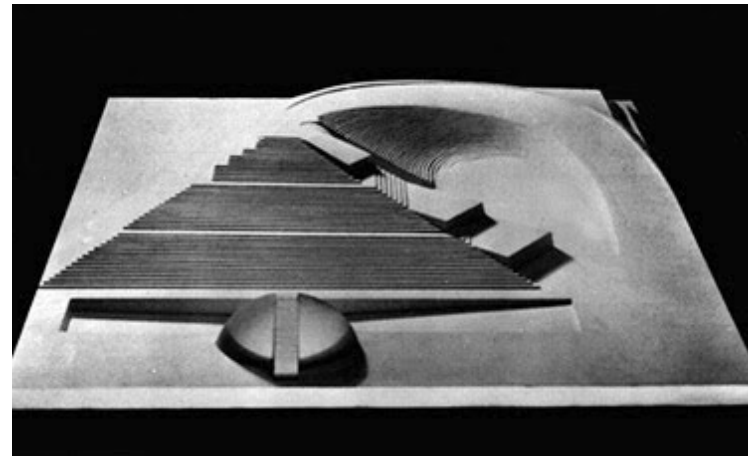
The concept of the form is a mutation of the two languages - urban grid (orthogonal) and landscape (freeform) driven from the two concept massing model.

Having learnt from the experiment, to harness uncertainty, one has to be certain in some parameters. Therefore, in my design, there is a certain parameter that is the height of the cutting line - which is the height of a step - 6".



CERTAIN RULES

INSPIRATION



Isamu Noguchi

Play Mountain
Contoured Playground
Swimming Pool for Josef von Sternberg

Contoured Playground is a rolling, undulant landscape with gentle hills, subtle depressions, and ridges that gradually slope up from the ground to a defined edge. It almost looks as though it were molded over thousands of years by flowing water.

"He said the essence of sculpture is the relationship between that thing you design, the space it's in, and the people walking through it. Sculpture isn't any one of those three; it's not even all those three things. It's the relationships you can't even see between them." *"When you move around [the model], you feel like you could be in it,"* Frangos says. *"That unlocks [the model's] 'frozen' state and shows it as an inhabitable space."*

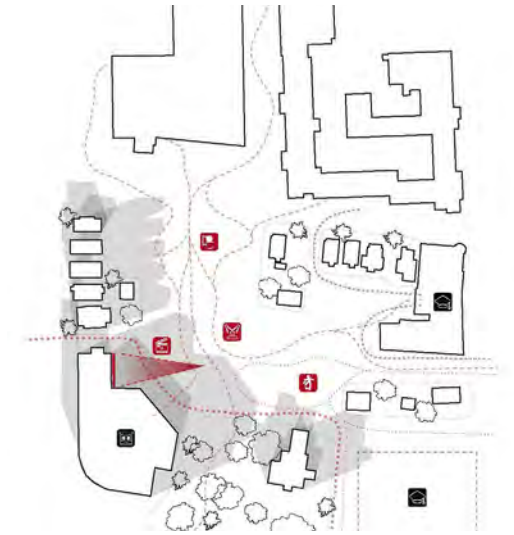
What's interesting about it is there is no center or any dominant elements. The relationship is more important than the object itself. I think this was the feeling I wanted to create in my design on the playground.



FORM GENERATION



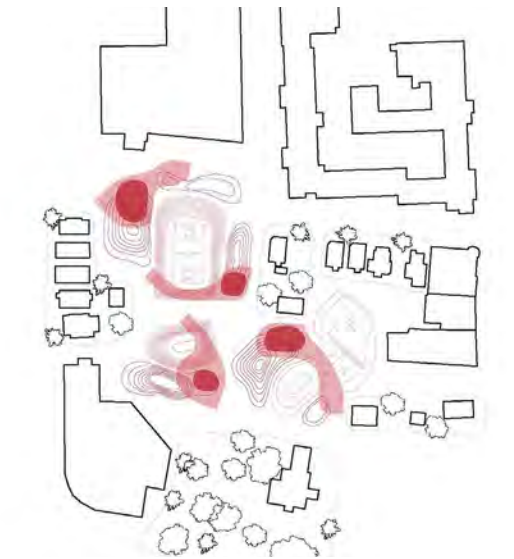
01 EXISTING SITE CONDITION



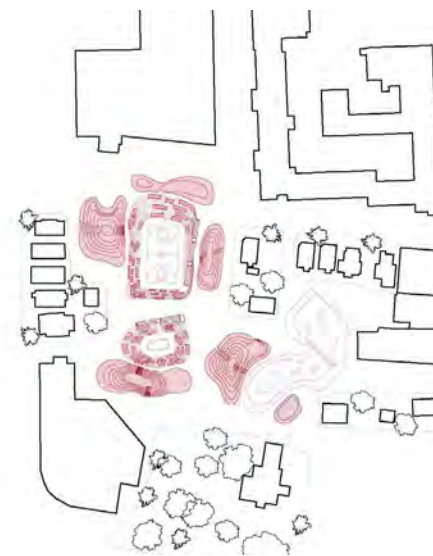
02 PROPOSED PROGRAM AND MOVEMENT



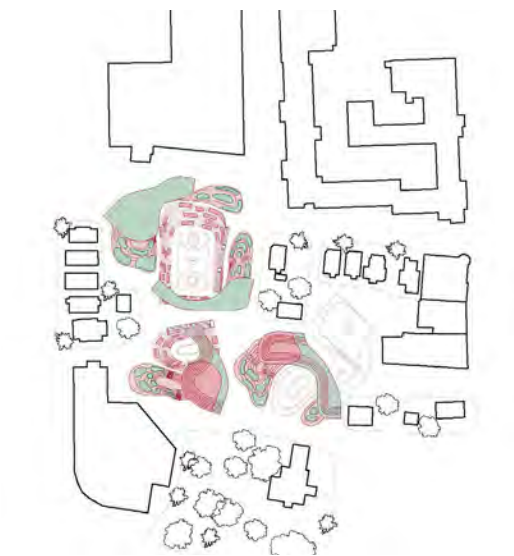
03 CONTOUR



04 ROOF AND INDOOR SPACE



05 HABITABLE SPACE

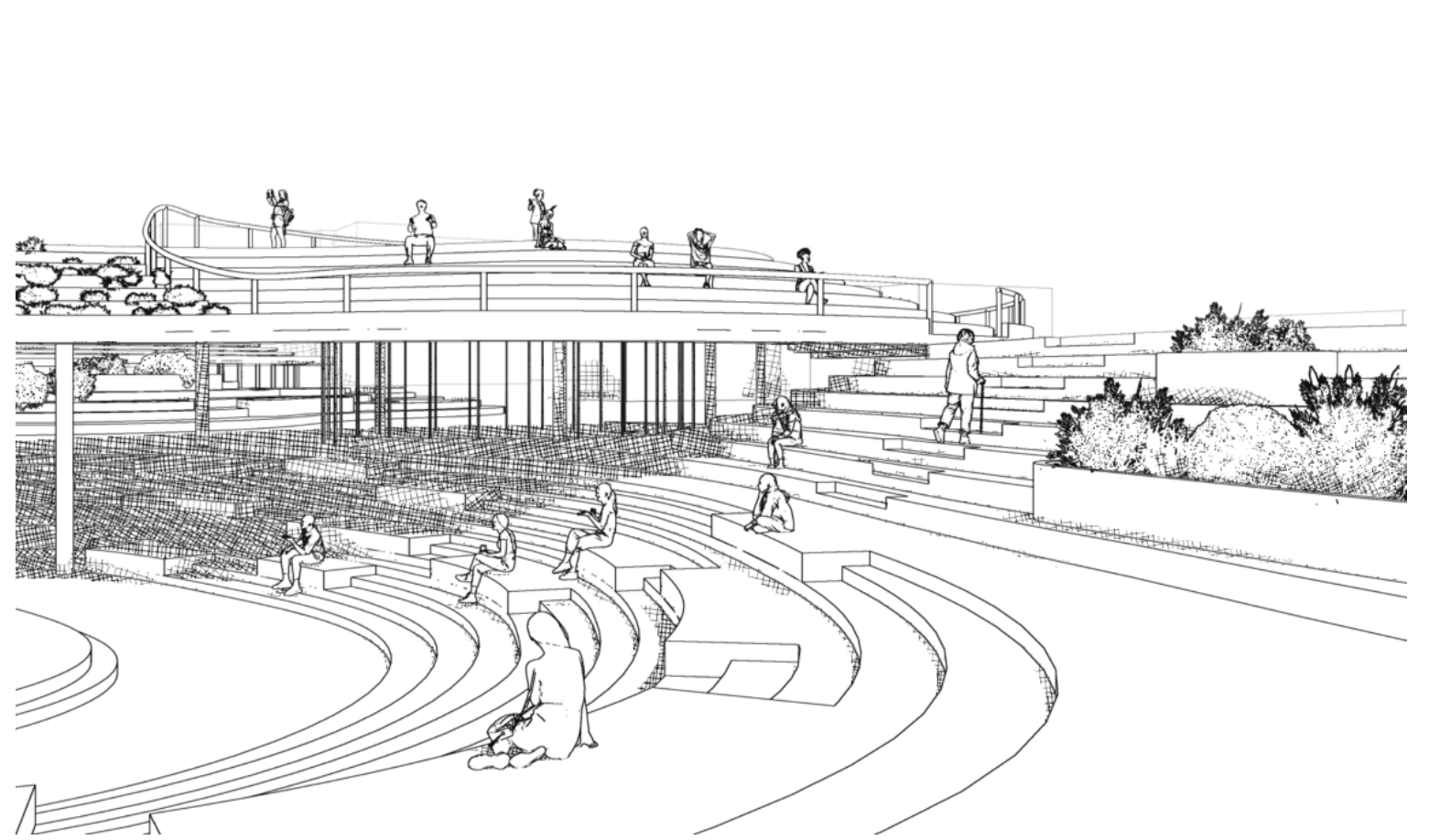


06 ECOLOGY

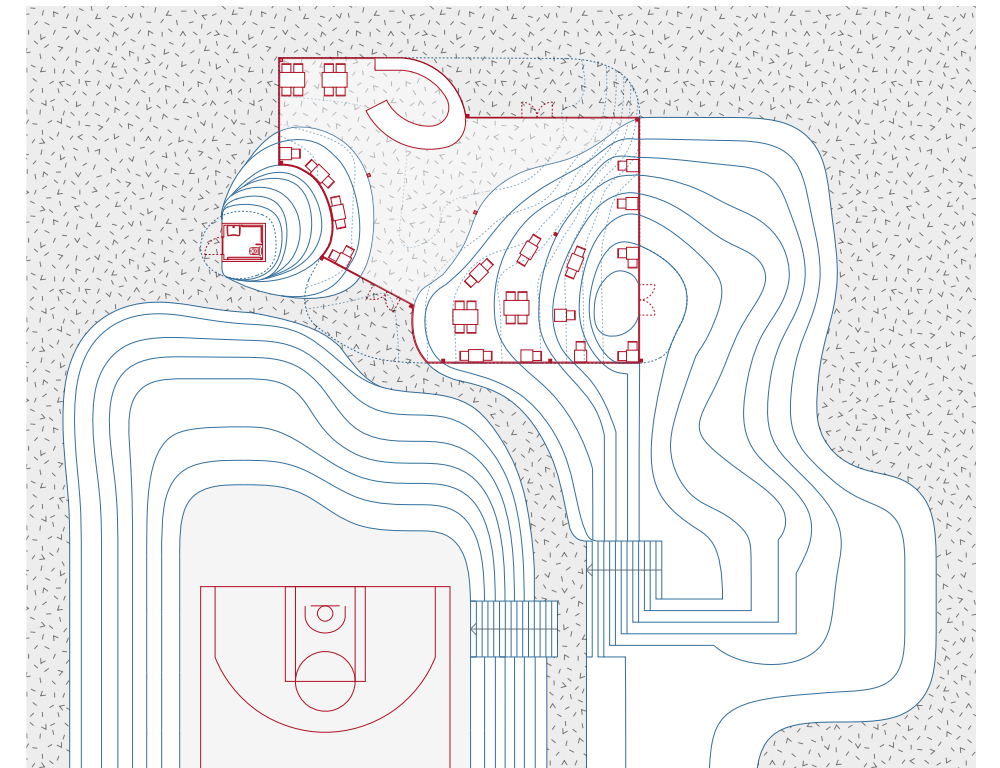
AT THE URBAN SCALE



AT THE SEGMENT SCALE

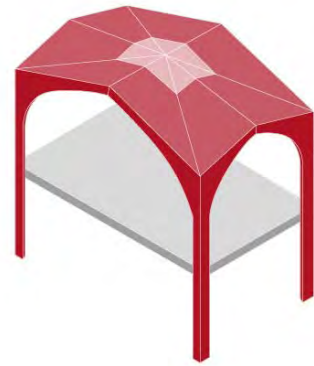


Establish a relationship between the hill, the sunken plaza/water tank and the roof
Meandering between the indoor, the semi-indoor and the outdoor; from the underground to the ground and to the roof



Archway to Oxford

Reinterpret the Historic Construction Wonder
Train Station Renovation



B. Arch Studio
University of Bath

Project Info:

Year

2017 (reworked in 2019)

Status

academic project

Location

oxford, united kingdom

Topics

infrastructure; renovation

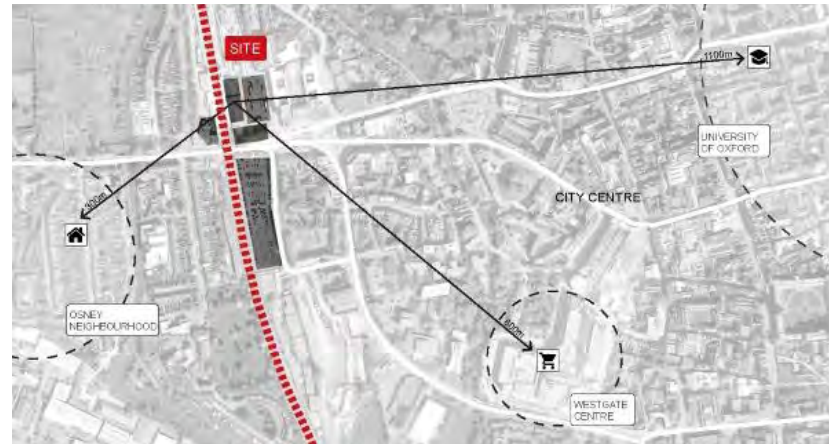
Description

The project is a train station upgraded into an integrated complex including exhibition spaces, retail areas, a business center and a hostel.



As a gateway to the city of Oxford, how to bring dignity to this renowned city which it deserves and also how to further rejuvenate the surrounding areas to promote healthy economic and culture propagation becomes the foremost thing to consider when starting the project.

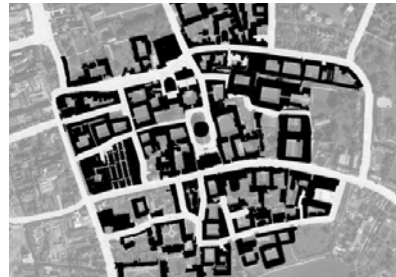
The design intention stems from our appreciation at the prevailing Gothic architecture in Oxford, we took 'pointed arch' as our design approach, we celebrated this feature by inventing modern arches made from timber to create an imposing gateway to the city.



DESIGN FORMATION



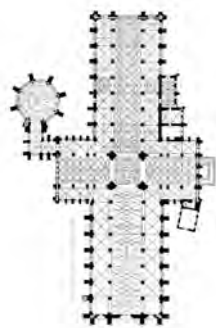
RAILWAY AS A DIVIDE



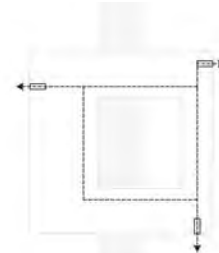
URBAN FORM - COURTYARD



GOTHIC FEATURES



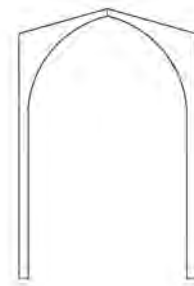
REGULARITY OF GRID



CONNECTOR



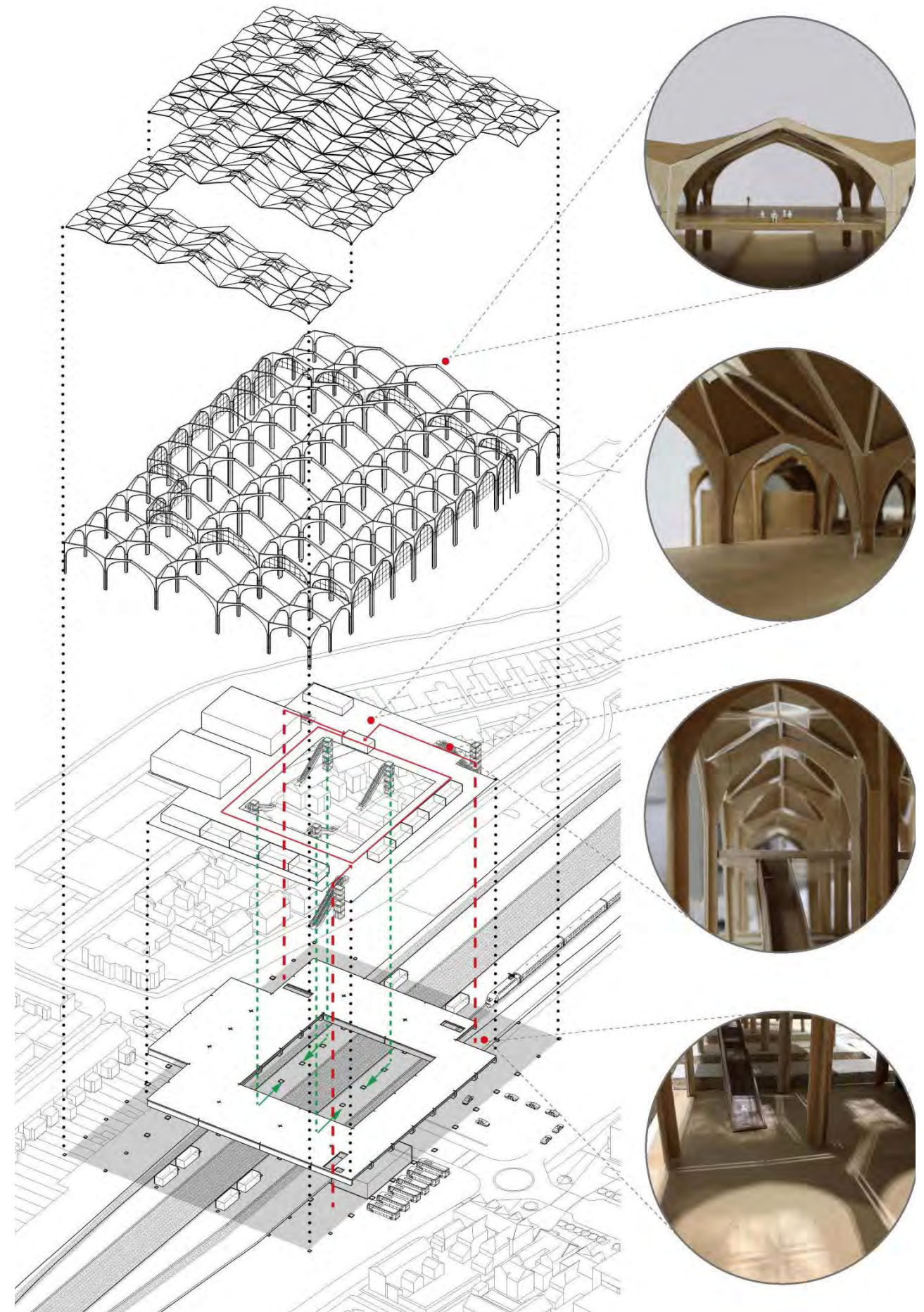
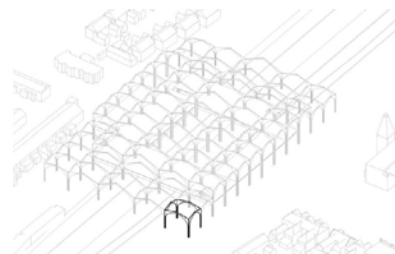
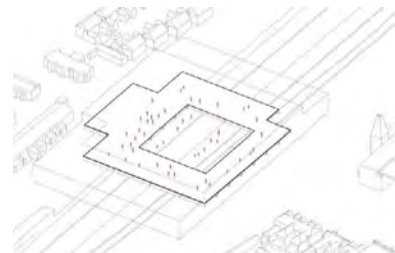
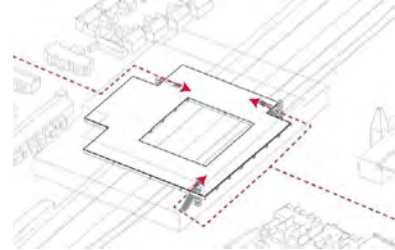
ATRIUM

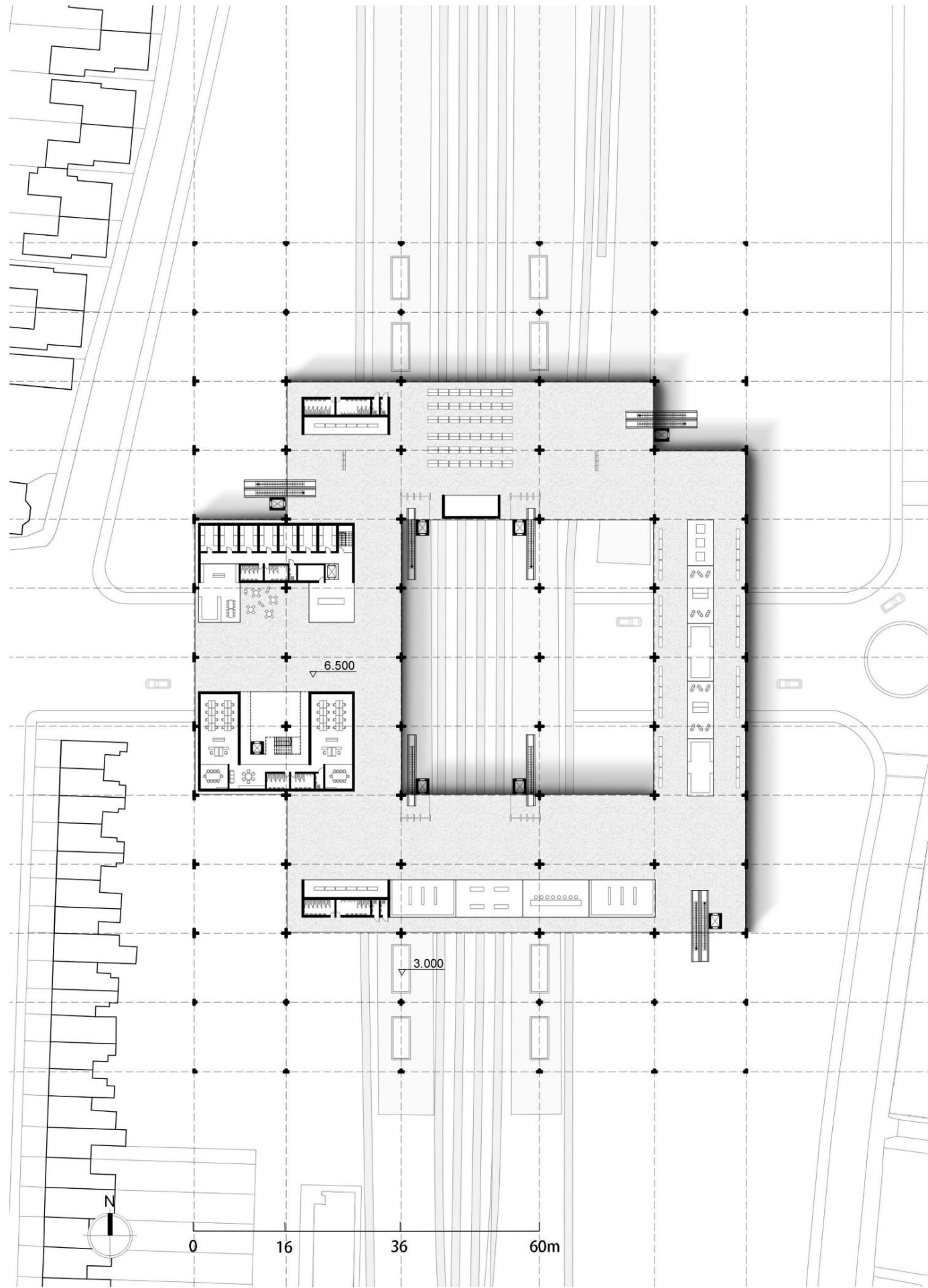


FORM

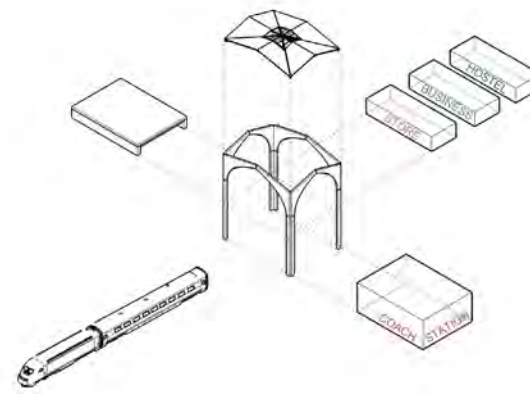


SYMMETRY

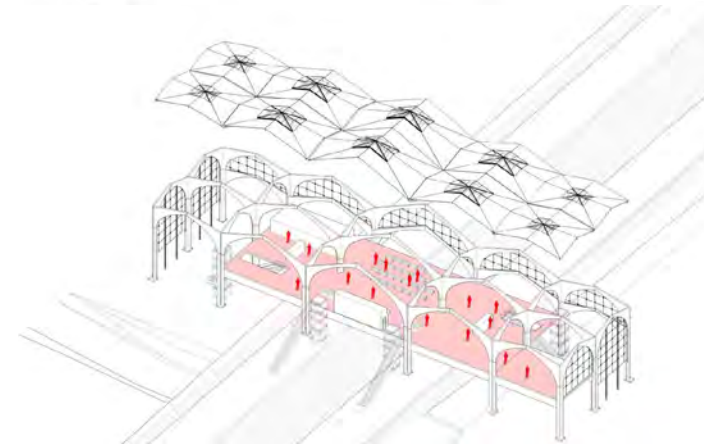
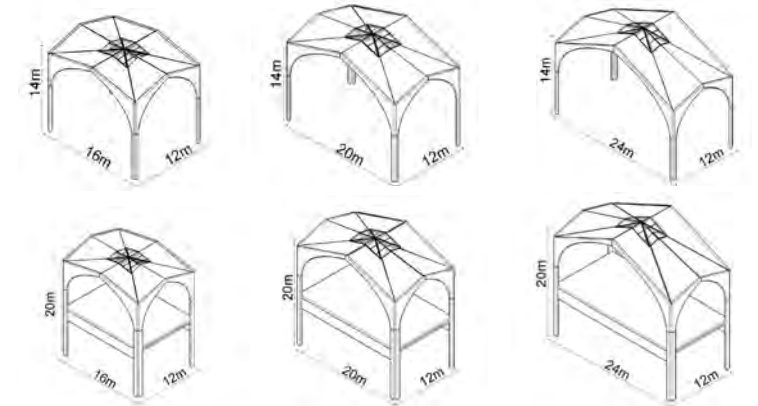




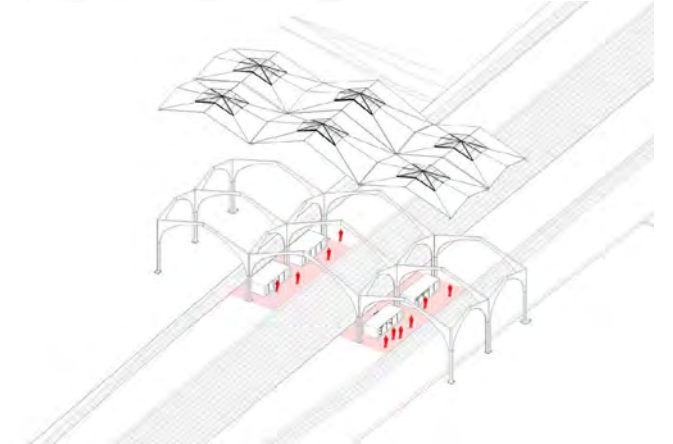
ONE FORM



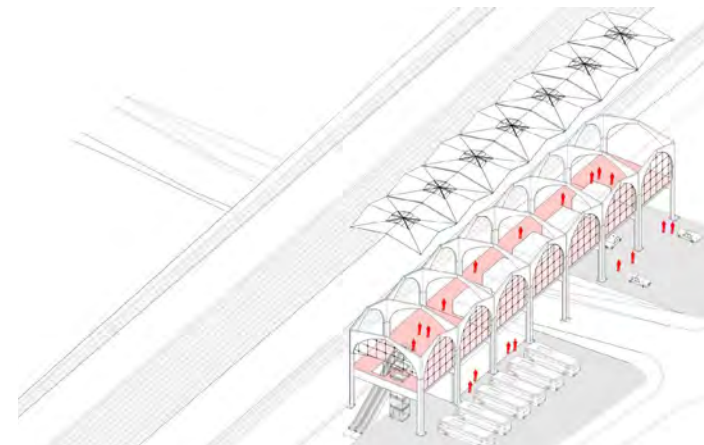
SIX TYPES



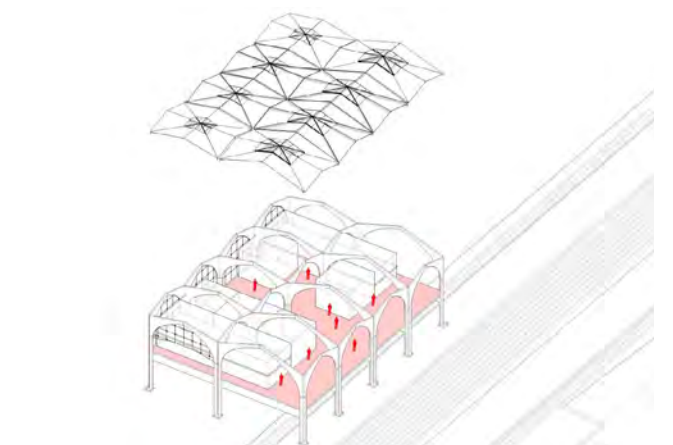
CONCOURSE



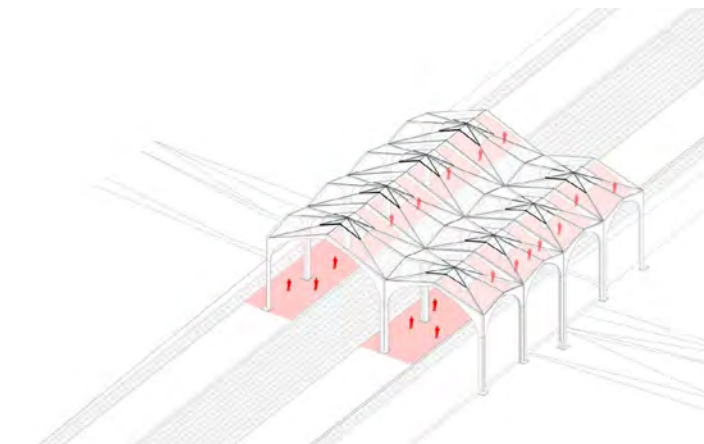
SIDE WAITING AREA



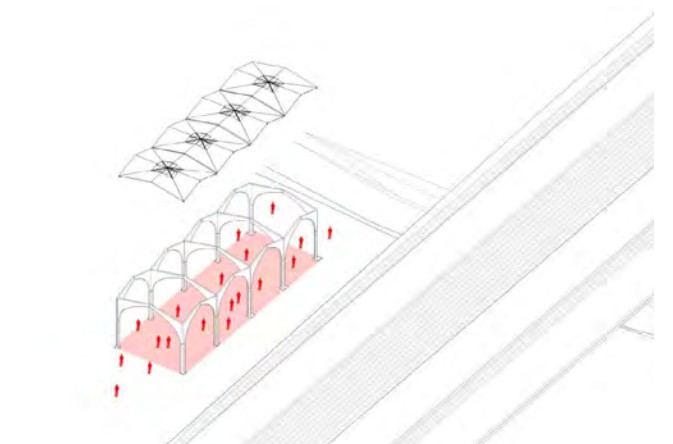
RETAIL CORRIDOR + COACH/TAXI WAITING AREA



HOSTEL + BUSINESS CENTER



CENTRAL WAITING AREA

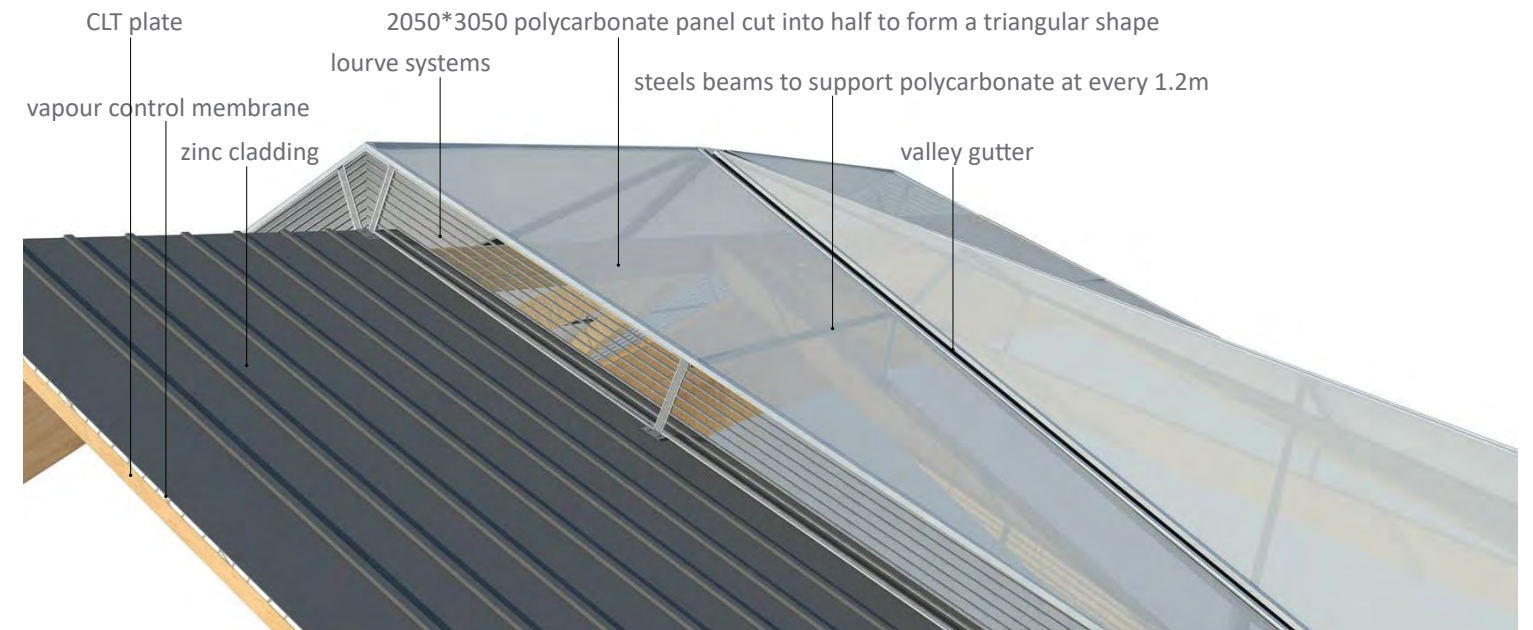
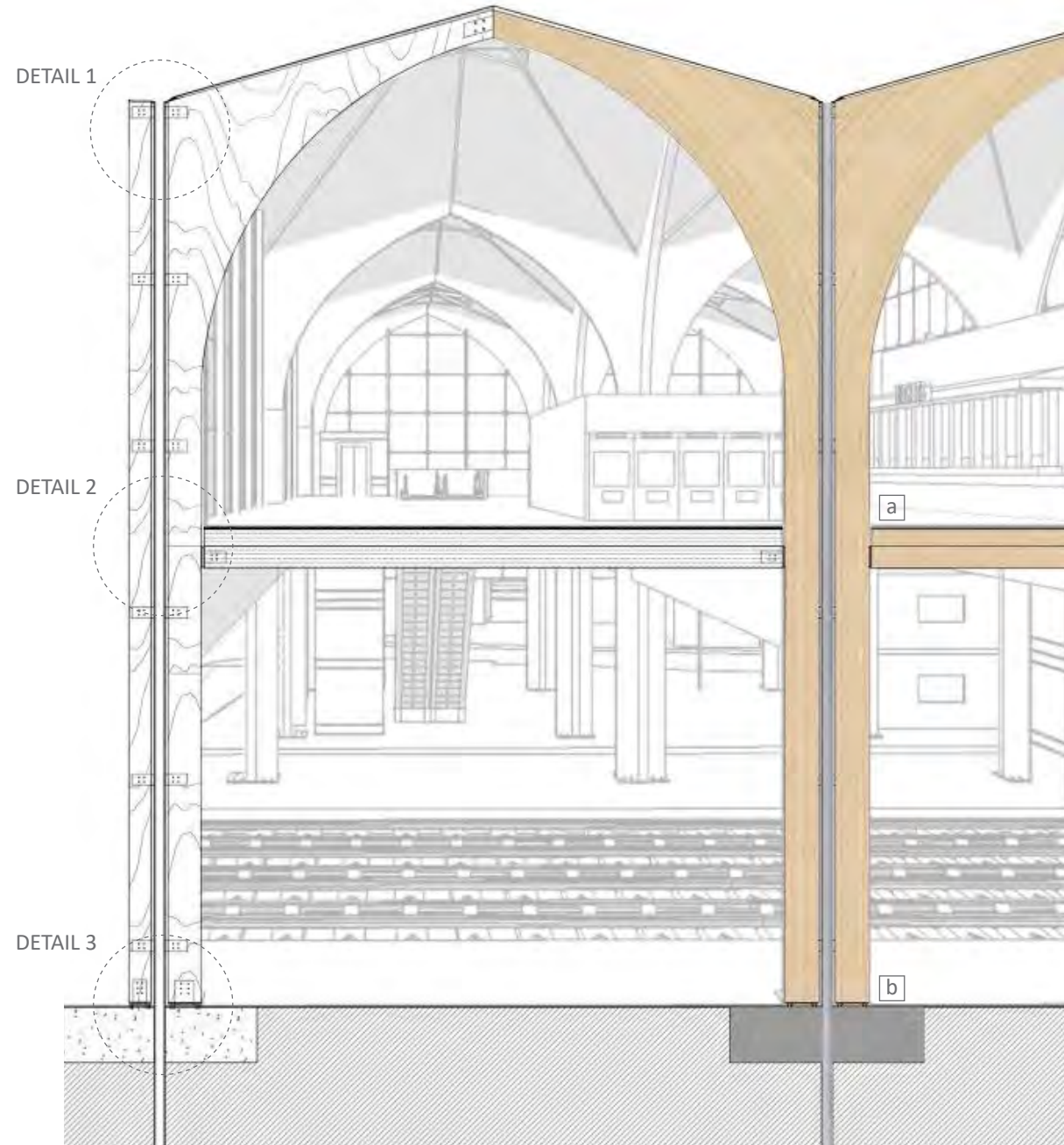


FLEXIBLE SPACE

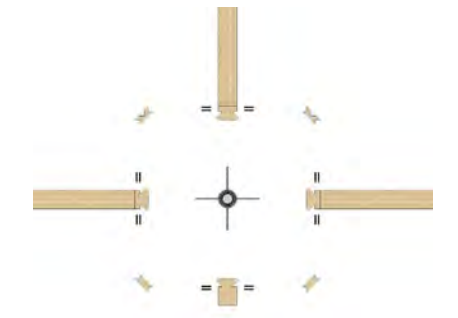
A TRIP TO OXFORD



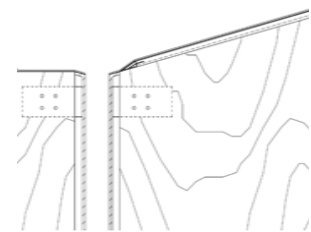
TECTONICS



a COLUMN TO BEAM & FLOOR CONNECTION



PLAN VIEW OF COLUMN TECTONICS



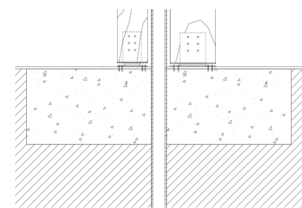
DETAIL 1
WATER PIPE WITHIN COLUMN

- zinc cladding form a barrier on the edge
- 200mm steel pipe with 50mm gap to timber both sides
- CLT plate on top of the ridge connected by steel bracket



DETAIL 2
COLUMN TO FLOOR

- 30mm Concrete screed finish
- 20mm waterproof membrane
- 300mm CLT panel
- 250mmx400mm secondary glulam beam



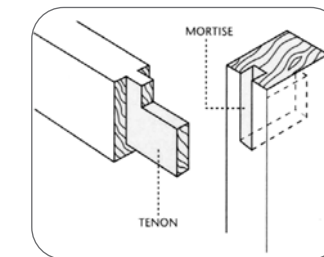
DETAIL 3
COLUMN TO GROUND

- steel plate connection
- pad foundation

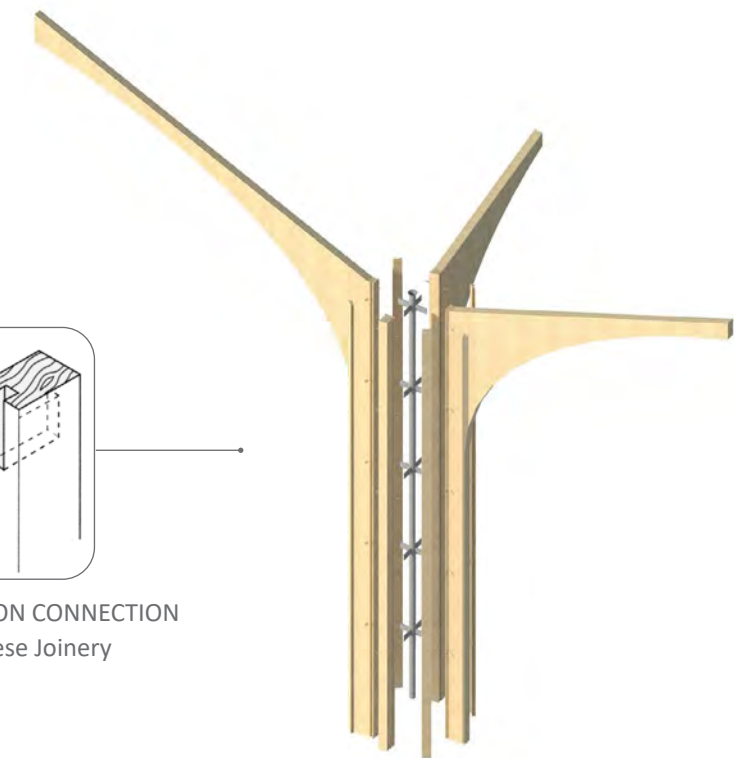


b COLUMN TO GROUND CONNECTION

INSPIRATION



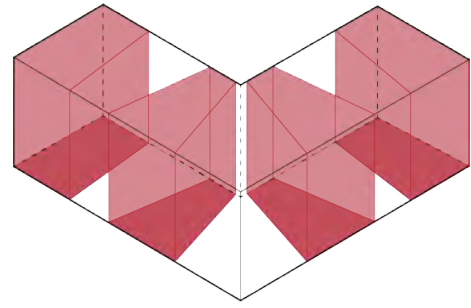
MORTISE-AND-TENON CONNECTION
The Artistry of Chinese Joinery



STEEL KINFE PLATE CONNECTION

School Within School

Group Project in Revit



Role :

- modelled building components, rooms and furnitures
- Participated in developing the double facade system
- Participated in developing the sustainability strategy
- drew details of various wall, floor, ceiling types

Others Involved

Wei Xiao, Yingxi Dong, Yichun Liu, Han Qin

M. Arch Technology

Columbia GSAPP

Project Info:

Year

09.2022 - 01. 2023

Status

academic project

Location

new york, united states

Topics

school; renovation

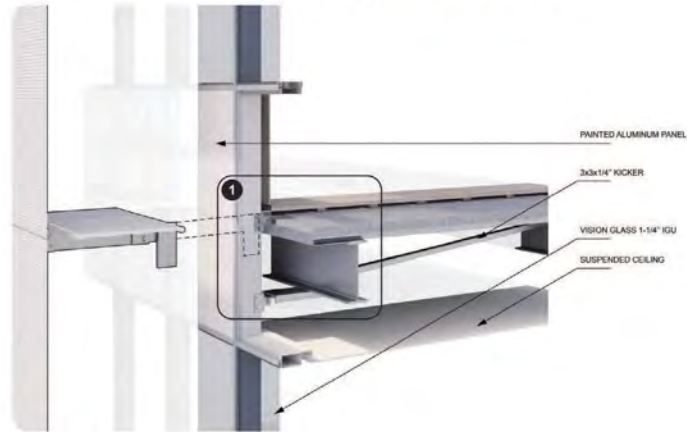
Description

The project is a K-12 school renovation developed in Revit, guided by the concept of "Solid v.s. Void", resolved structural, environmental, mechanical envelope aspects of the design.





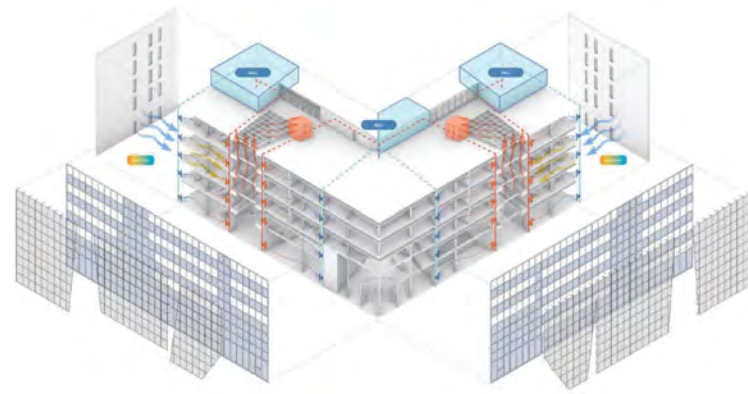
1 CONNECTION DETAILS



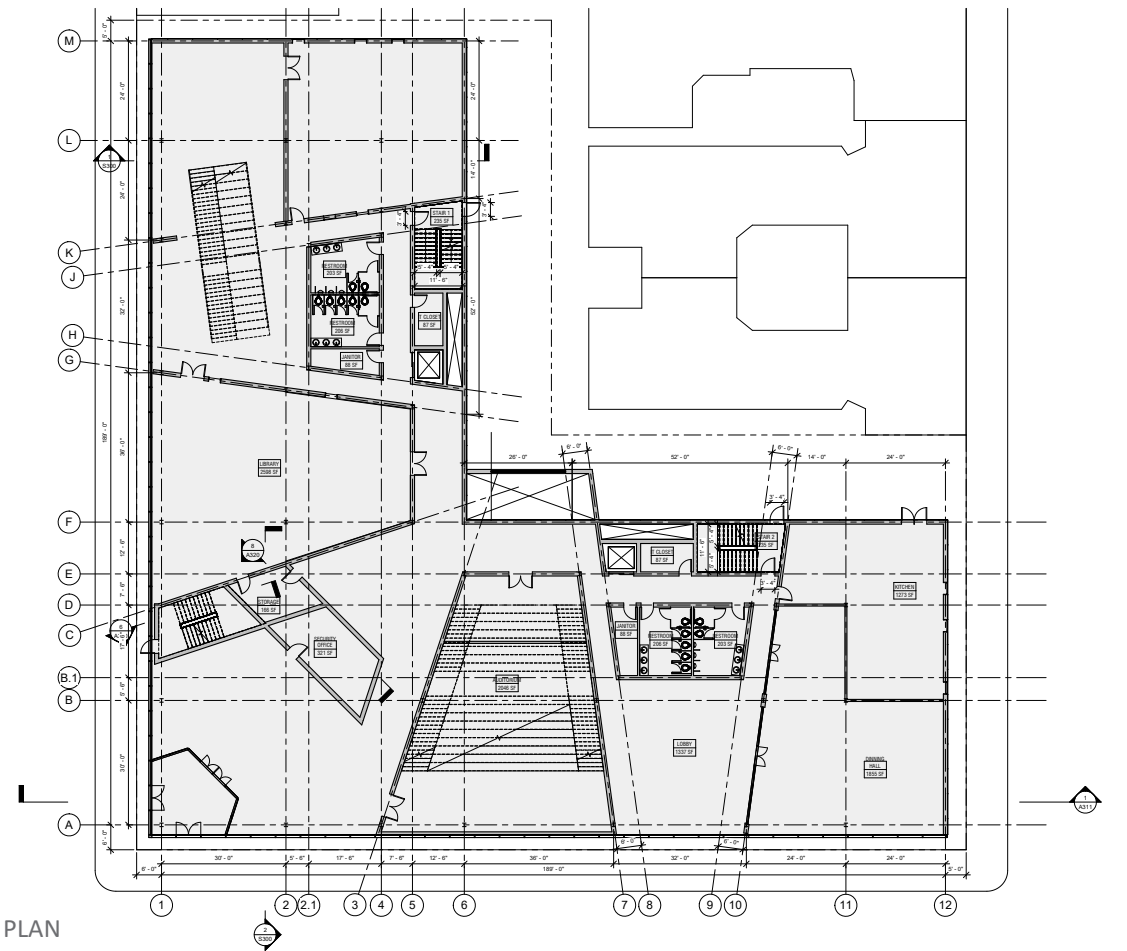
DOUBLE FACADE CONNECTION TECTONIC



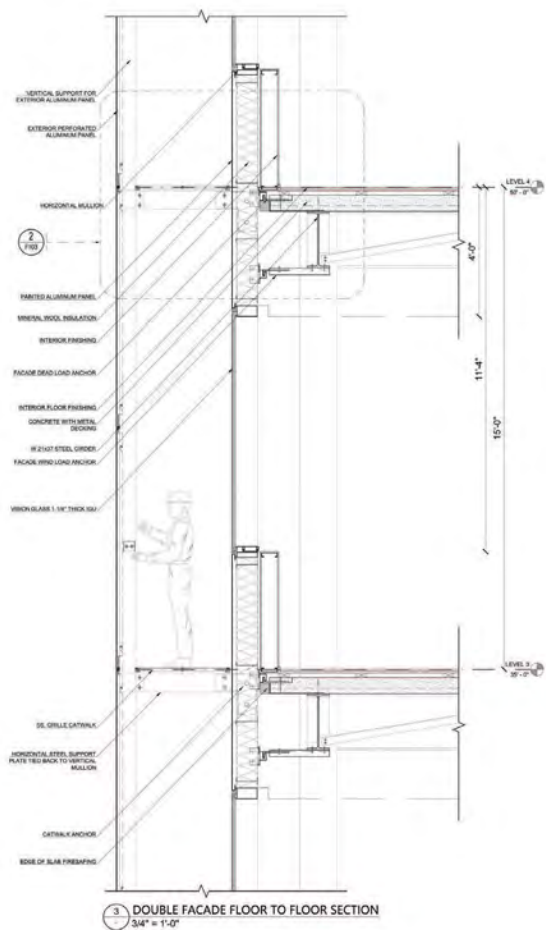
SOLAR AND GEOTHERMAL



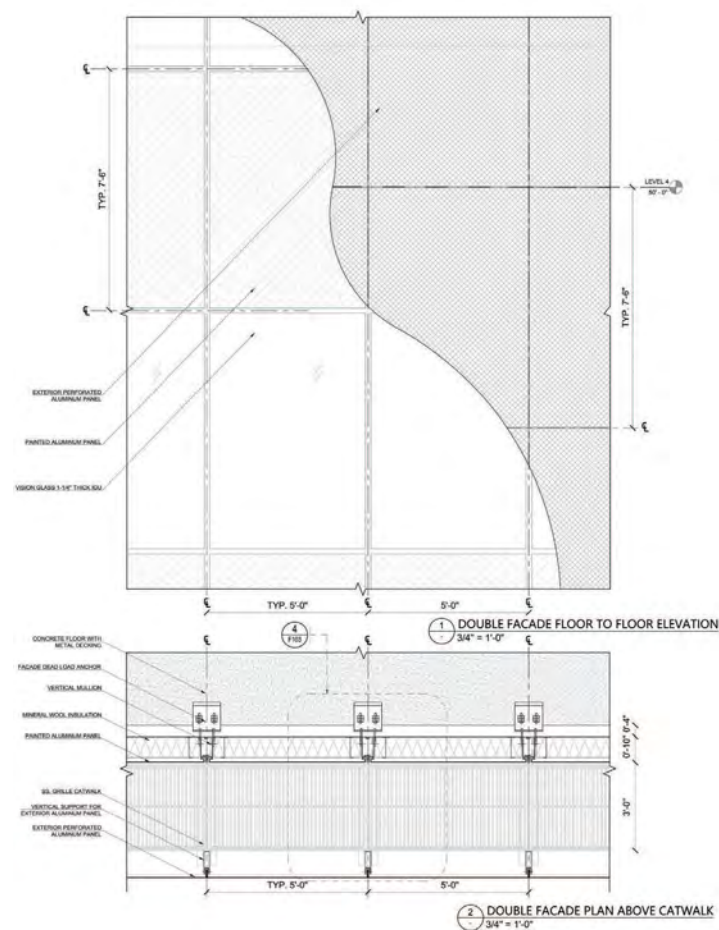
WIND FLOW CIRCULATION



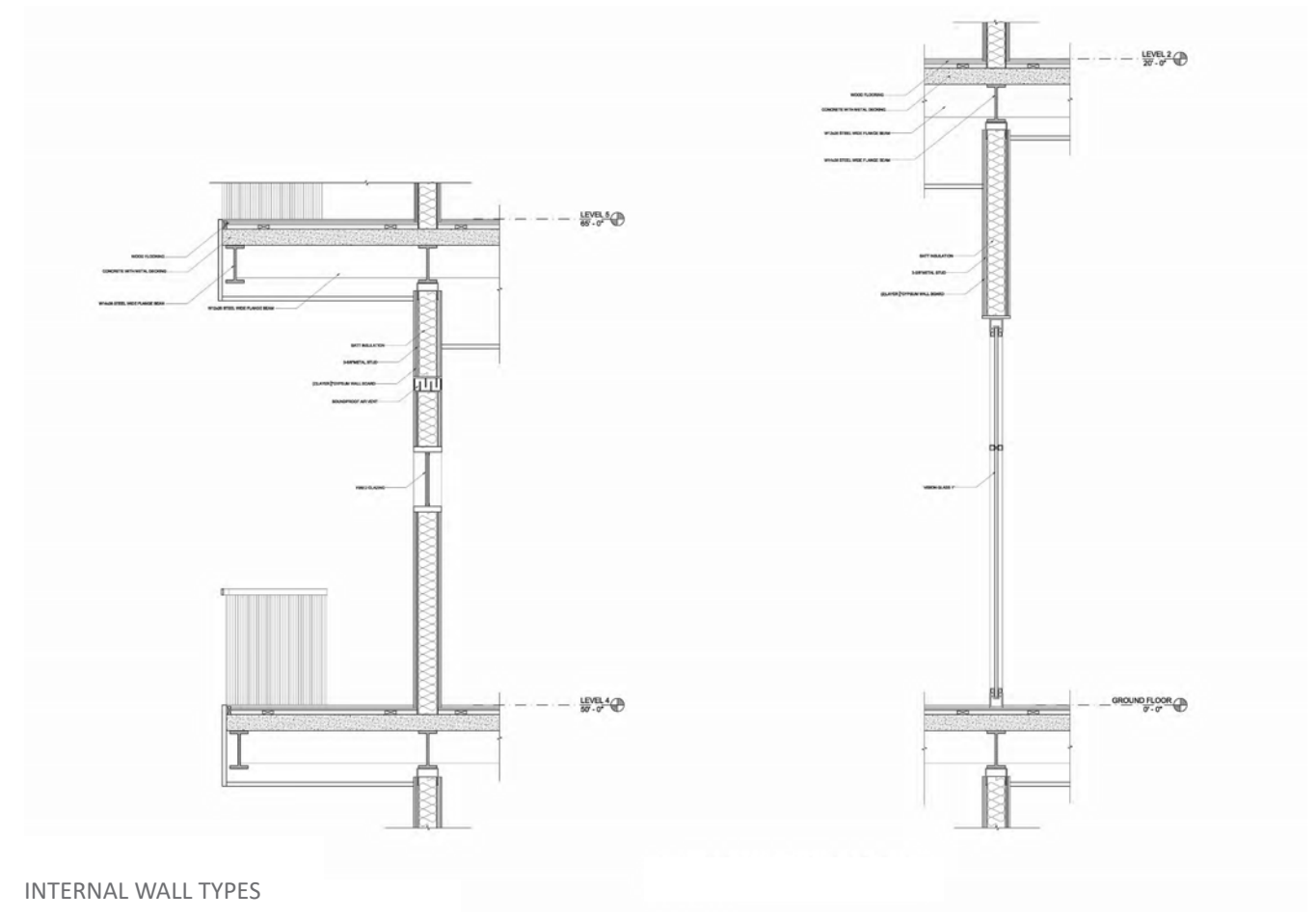
GROUND FLOOR PLAN



3 DOUBLE FACADE FLOOR TO FLOOR SECTION
3/4\"/>



2 DOUBLE FACADE PLAN ABOVE CATWALK
3/4\"/>



INTERNAL WALL TYPES