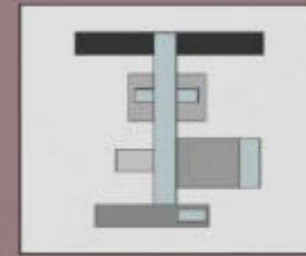
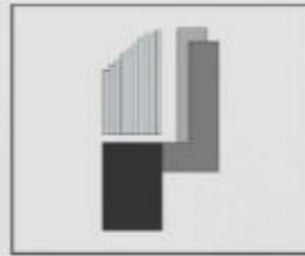
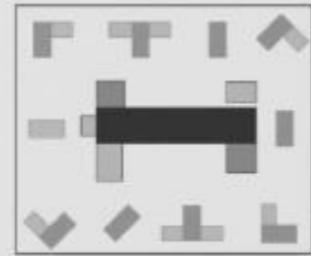


ARCHITECTURE  
PORTFOLIO



SEYFALI KARKIN  
ARCHITECT

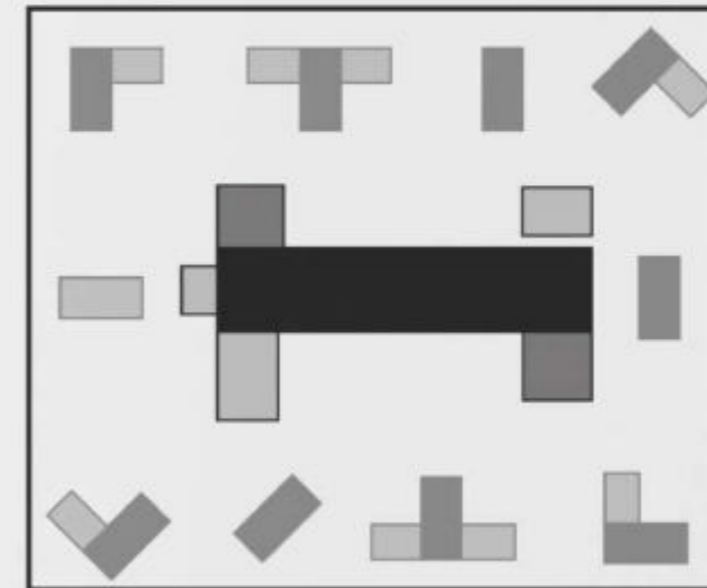
## /CONTENTS

01. EREGLI UNIVERSITY CAMPUS FACULTY OF AGRICULTURE	5-34
<small>Studio: VIII - Gradition Project, Teamwork (KONYA)</small>	
02. MARKET AREA AND CONGRESS CENTER	35-52
<small>Studio: VII - Social Area Project (KONYA)</small>	
03. LIFE CAMPUS FOR CHILDREN IN NEED OF PROTECTION	53-66
<small>Studio: VI - Social Awareness Project (KONYA)</small>	
04. BOUTIQUE HOTEL PROJECT	67-82
<small>Studio: V - Accomodation Project (ANKARA)</small>	
83-88	SKETCHS .05
89-94	RENDERING .06
94-102	PHOTOGRAPHY .07

## 01/ EREGLI UNIVERSITY CAMPUS FACULTY OF AGRICULTURE

Studio VIII - Graduation Project, Teamwork (KONYA)

Universities are institutions where qualified human power that shapes the future of society grows and sprouts like a seed. It is aimed to plan university units in a holistic system and to develop a flexible design base that will bear the traces of its development. They are sheltered spaces with campus boundaries, defined and closed. The campus, which establishes a border-periphery relationship with the city, is a set of interactive closed-open-semi-open spaces within itself.









South West Silhouette

STRUCTURING



VEHICLE AXLE



GREEN AND WATER ELEMENT



PEDESTRIAN CIRCULATION



PERSPECTIVE



North West Silhouette



South East Silhouette

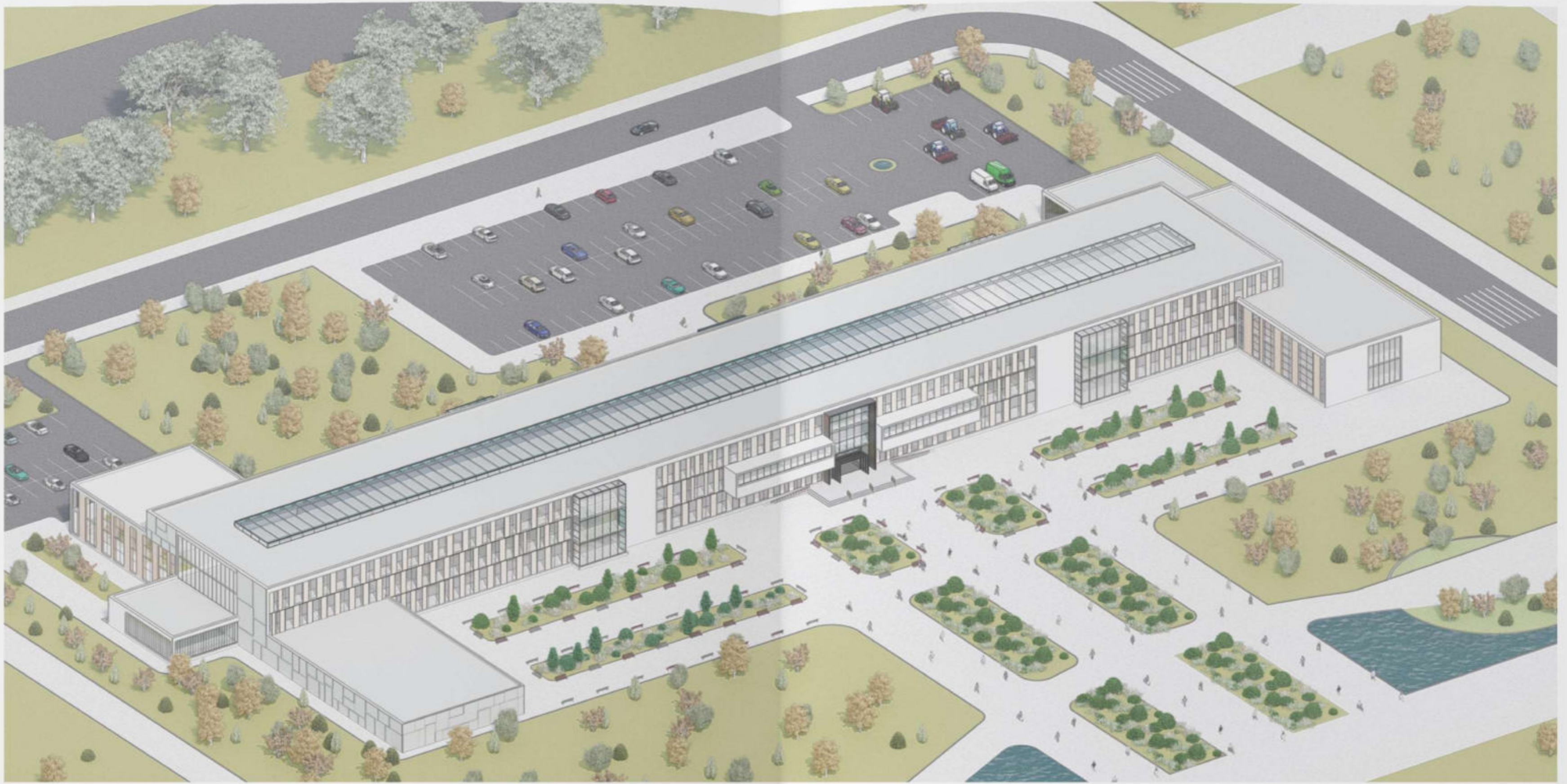


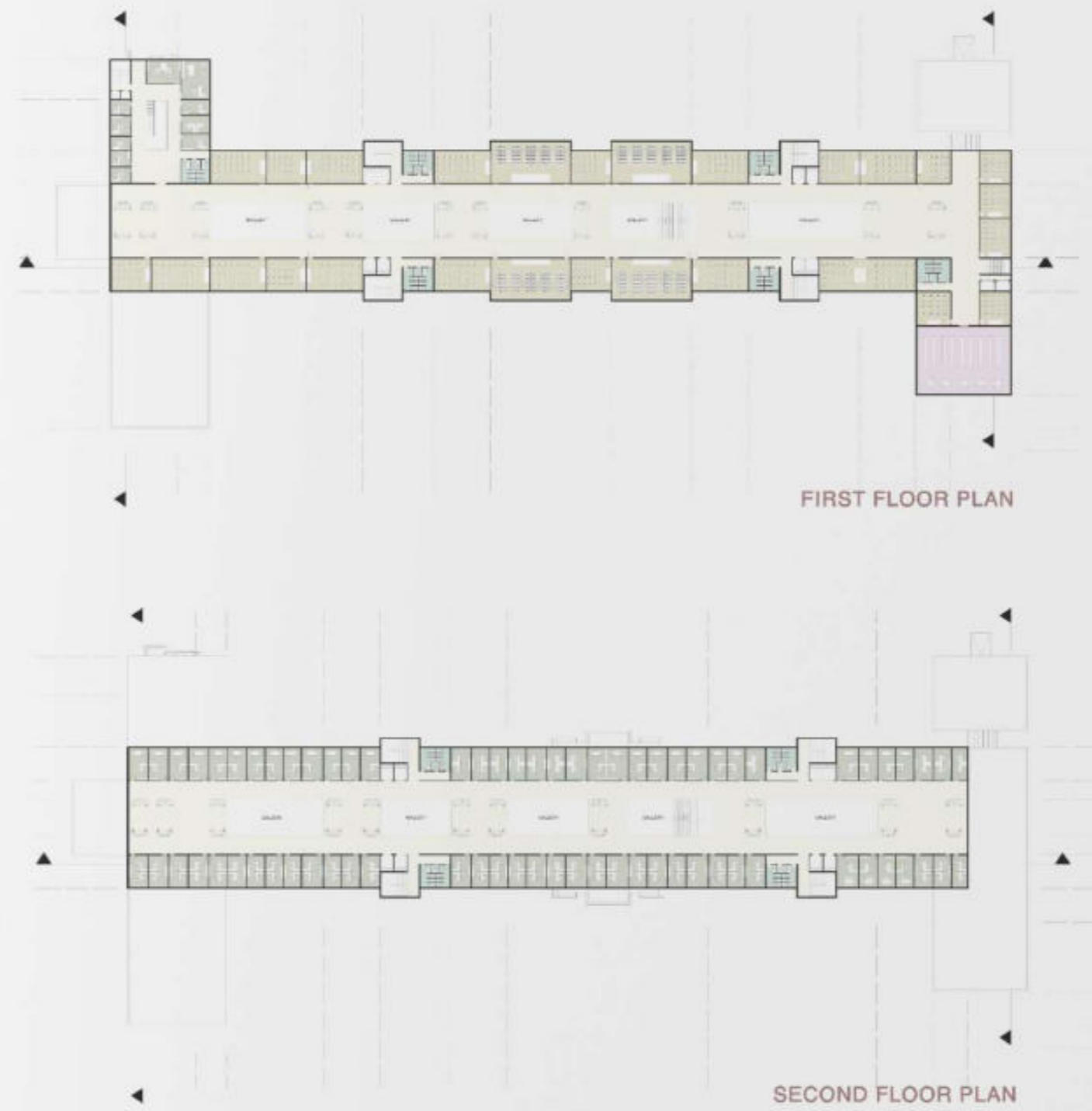
North East Silhouette

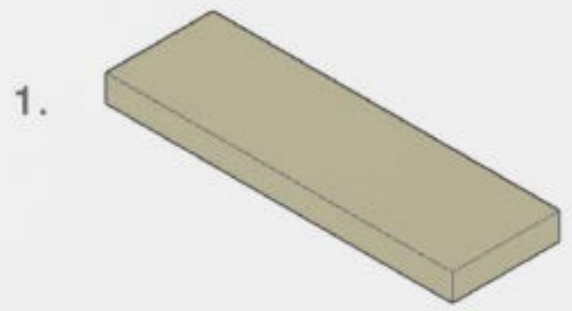


Mass courtyard relationship continues in the design of the Faculty of Agriculture. It was desired to create transparent surfaces on the roof level, natural light was desired to be taken into the atrium area

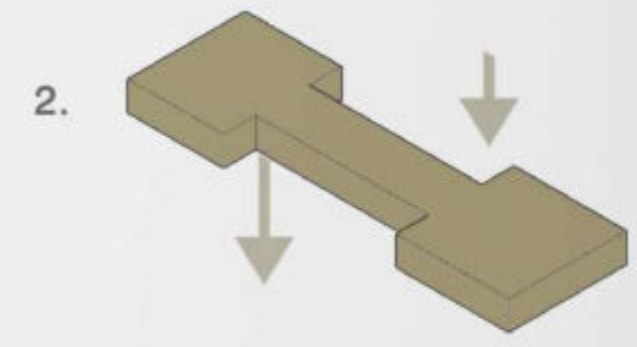




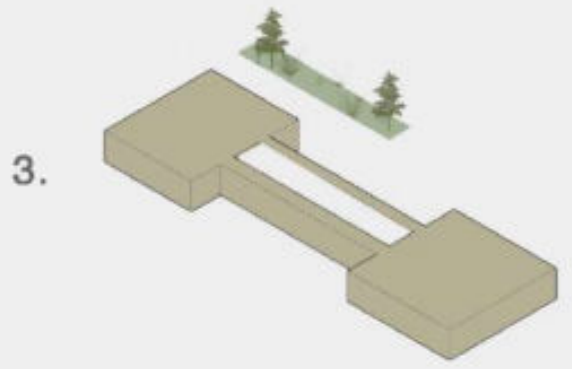




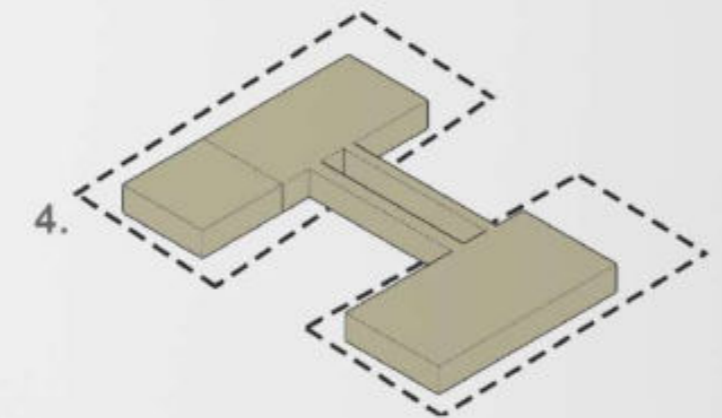
Main Mass



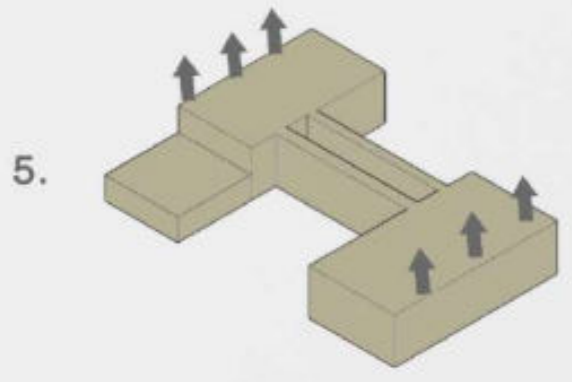
Massively inward volumes. Entries defined from the main body were created. Social areas have been created for the user.



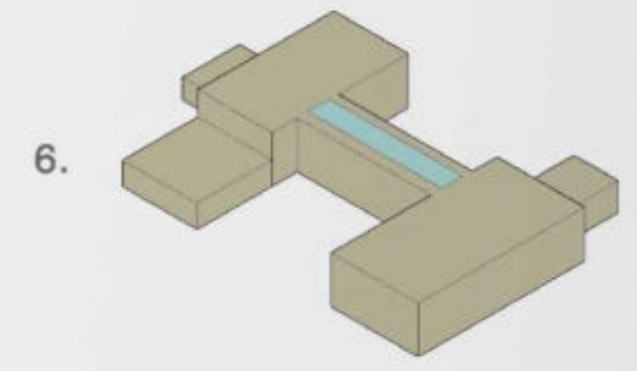
The transparency created for natural light in the Main Mass was designed as an atrium on the ground floor.



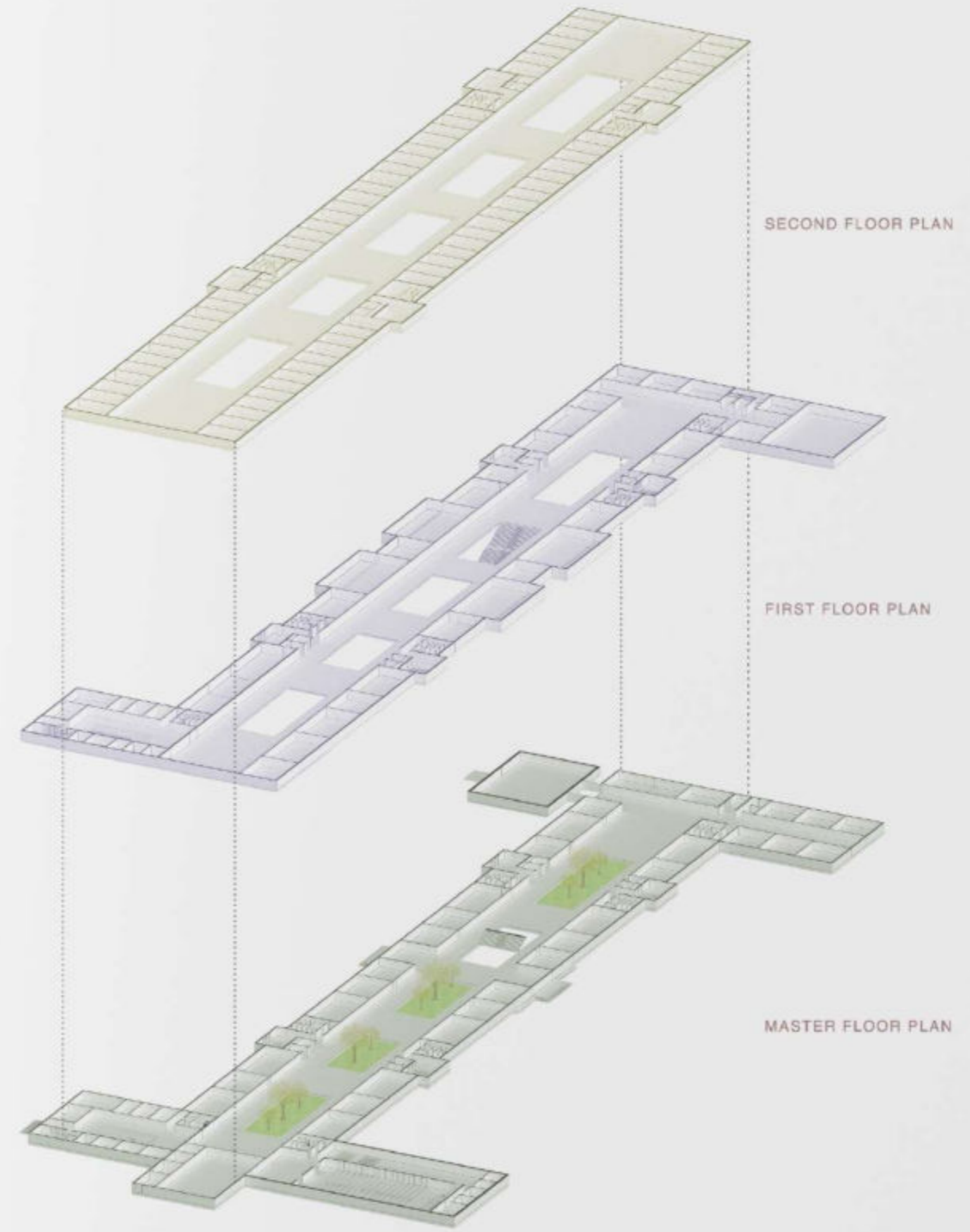
The relations of the functions with the main mass and the car park were designed.



The form of the structure emerged with the construction of the functions.



Social areas were developed by integrating the building with the landscape.

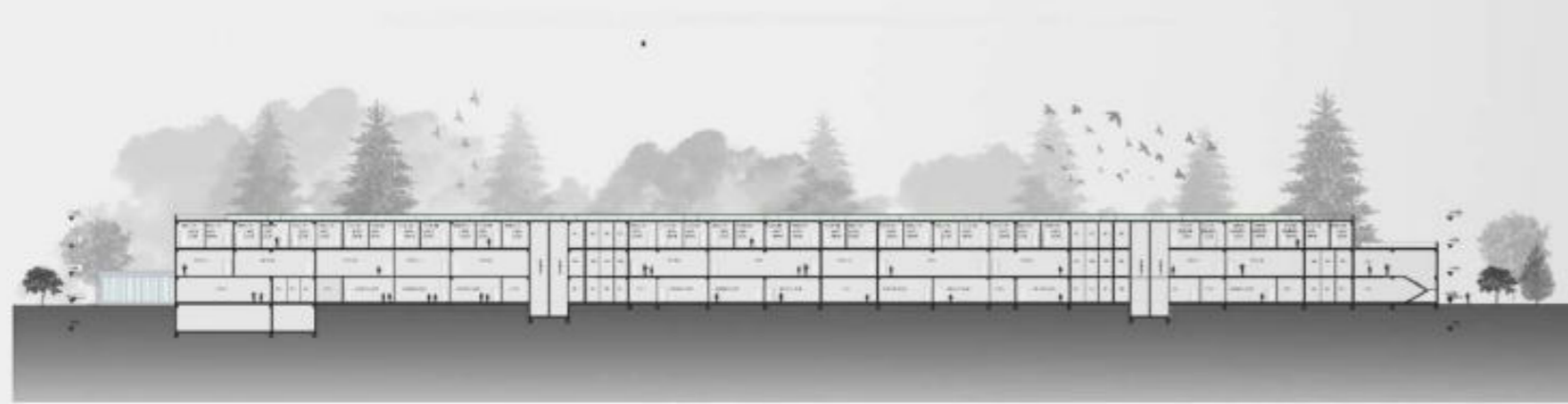








SECTION 1



SECTION 2



SECTION 3



SOUTHWEST ELEVATION



SOUTHEAST ELEVATION



NORTHWEST ELEVATION



NORTHEAST ELEVATION

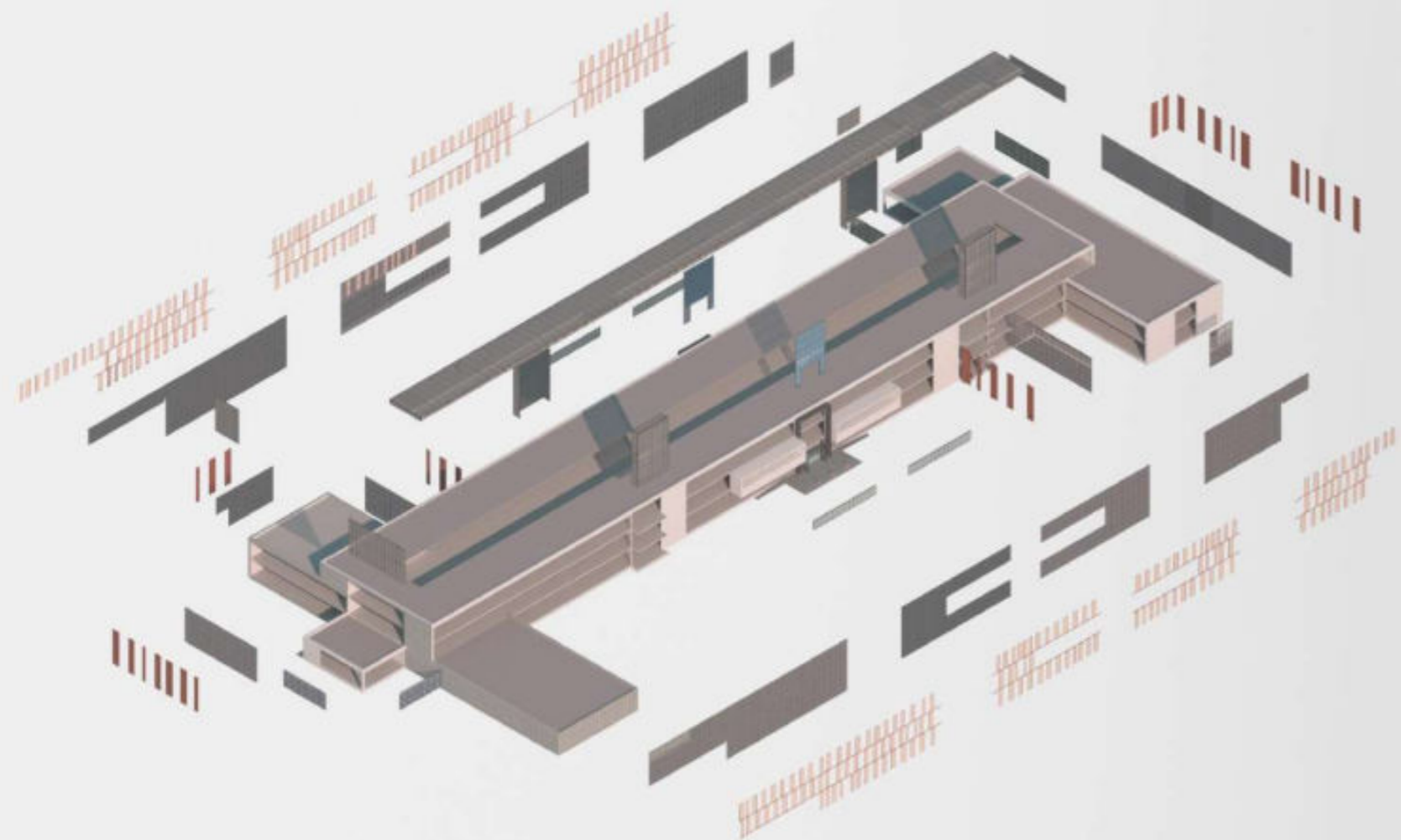


DIAGRAM 1

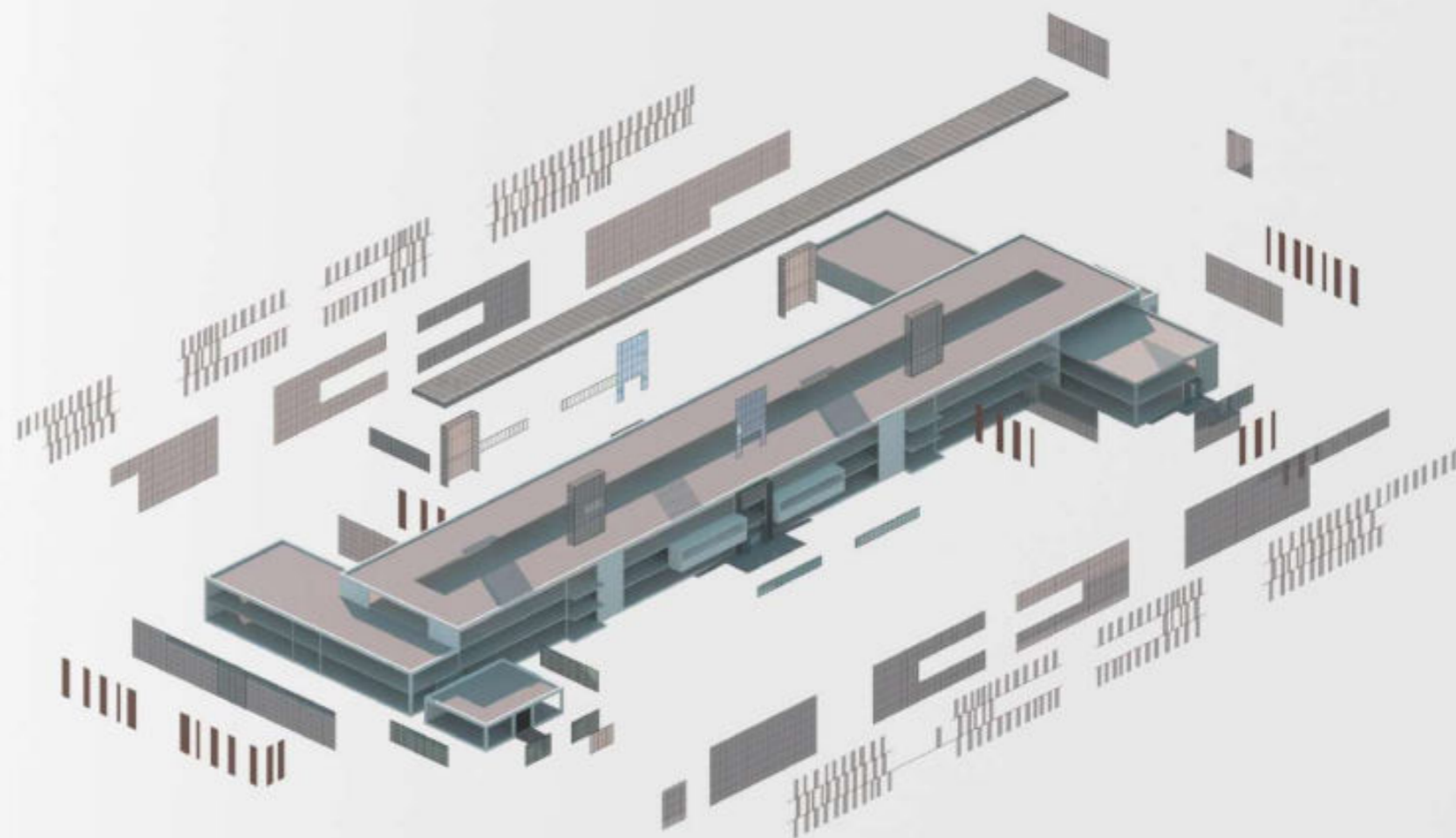


DIAGRAM 2



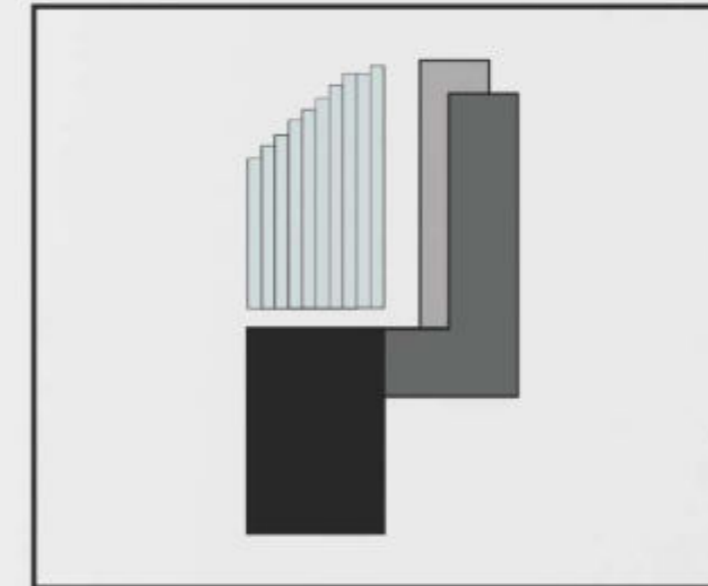
## 02/ MARKET AREA AND CONGRESS CENTER

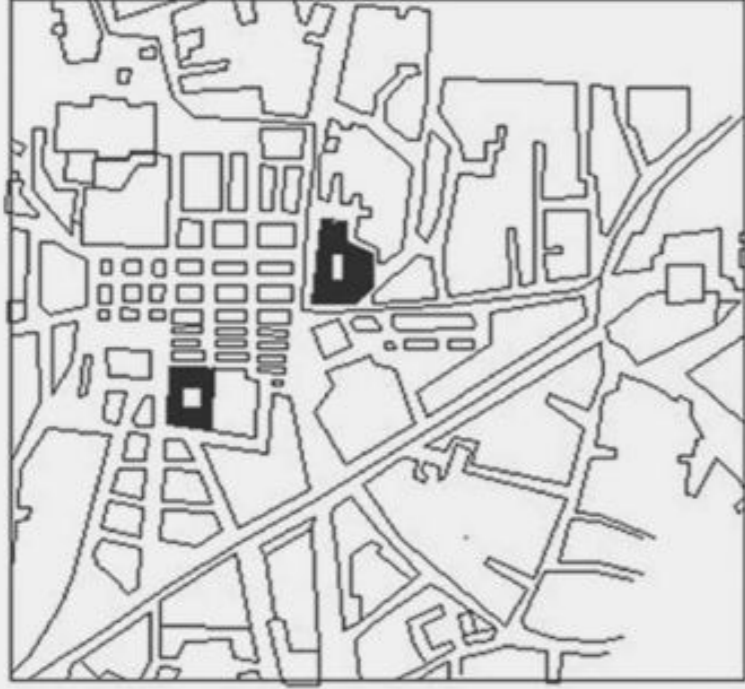
Studio VII-Social Area Project (KONYA)

As a social space, 'Marketplace' aims to create suitable environments for people to come together and interact. Its political function is to hold people from all walks of life together for democracy, freedom, equality and justice. The fact that public open spaces bring individuals together and that this space is open to the whole community requires it to provide certain physical conditions for the interaction and activities that will take place there. In this context, the main factors that make a public space successful are that they are accessible, people can engage in various activities, the place has a comfortable and good image, and it is a friendly place that supports social activities and provides more social interaction by meeting people.

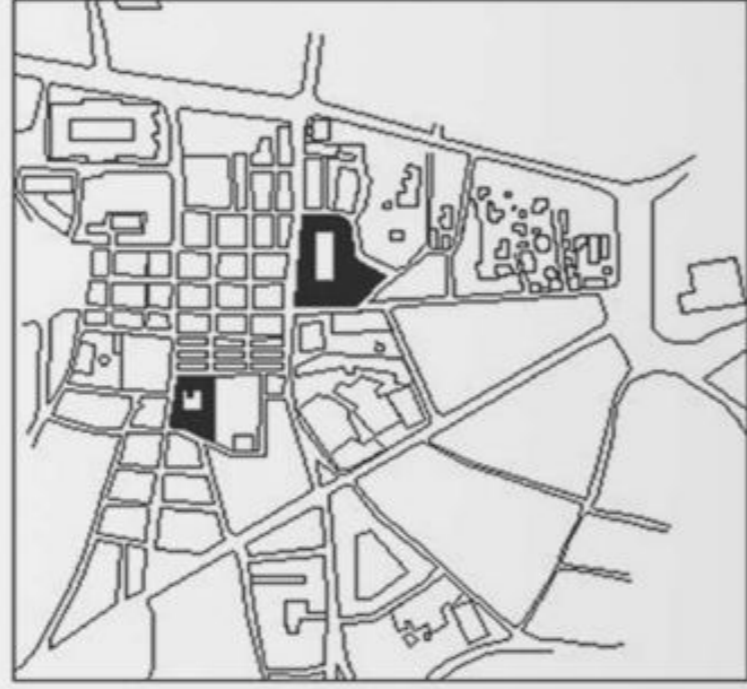
*"The public space is the bearer of democracy, the heart of the city, the spirit of the city where the feelings and memories of citizenship take place, and the ambiance of the city. These areas are tools to transform and reshape the city physically, socially and symbolically. This definition is also very important in terms of emphasizing the multifaceted features of public spaces such as equality, sharing, sense of place, and both their physical and social content."*

RICHARD SENNETT





1923 - Historical Development of the Old Market Place



1950 - Historical Development of the Old Market Place



1980 - Historical Development of the Old Market Place



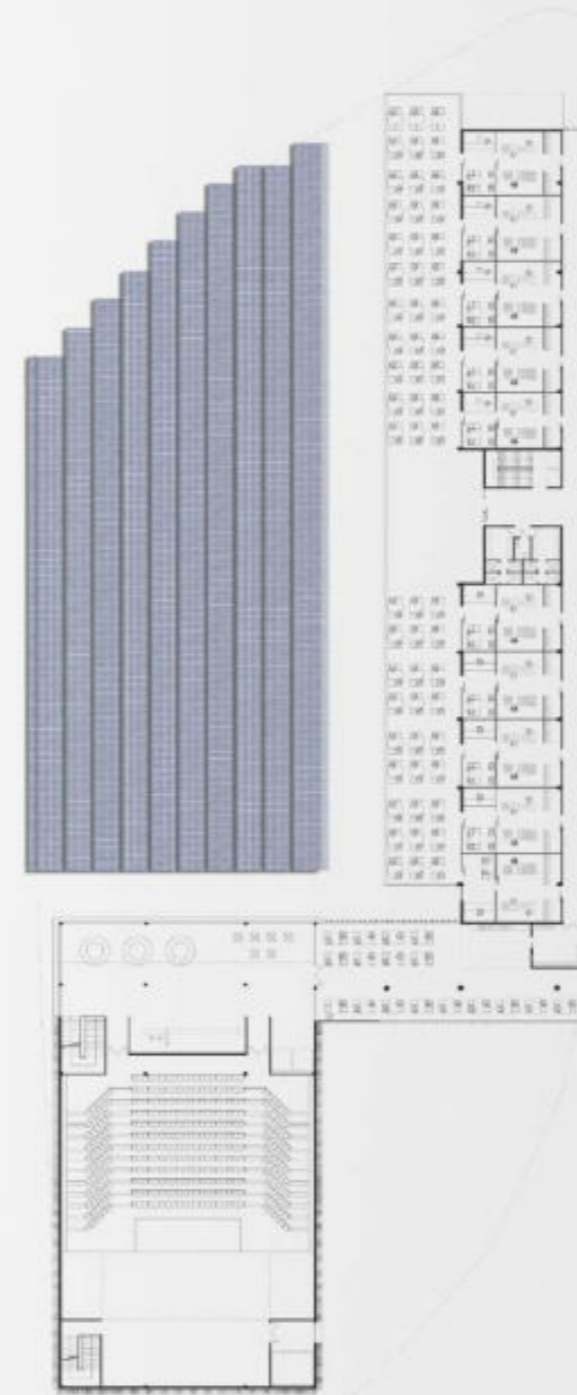
2000 - Historical Development of the Old Market Place



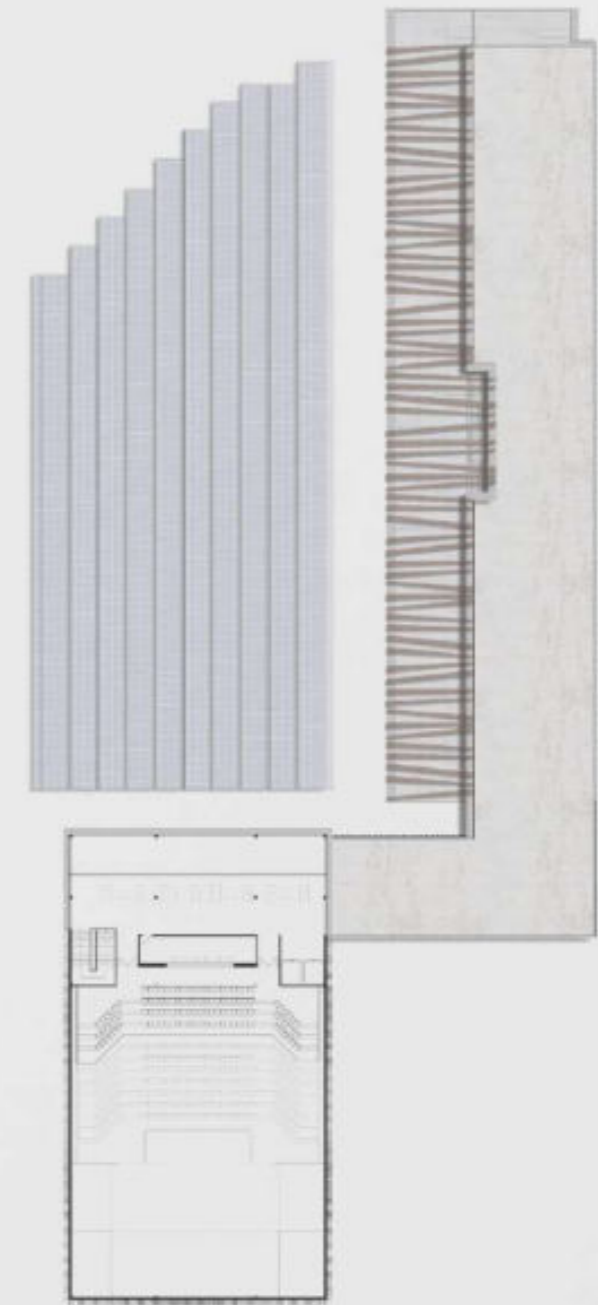
SITE PLAN



GROUND FLOOR PLAN

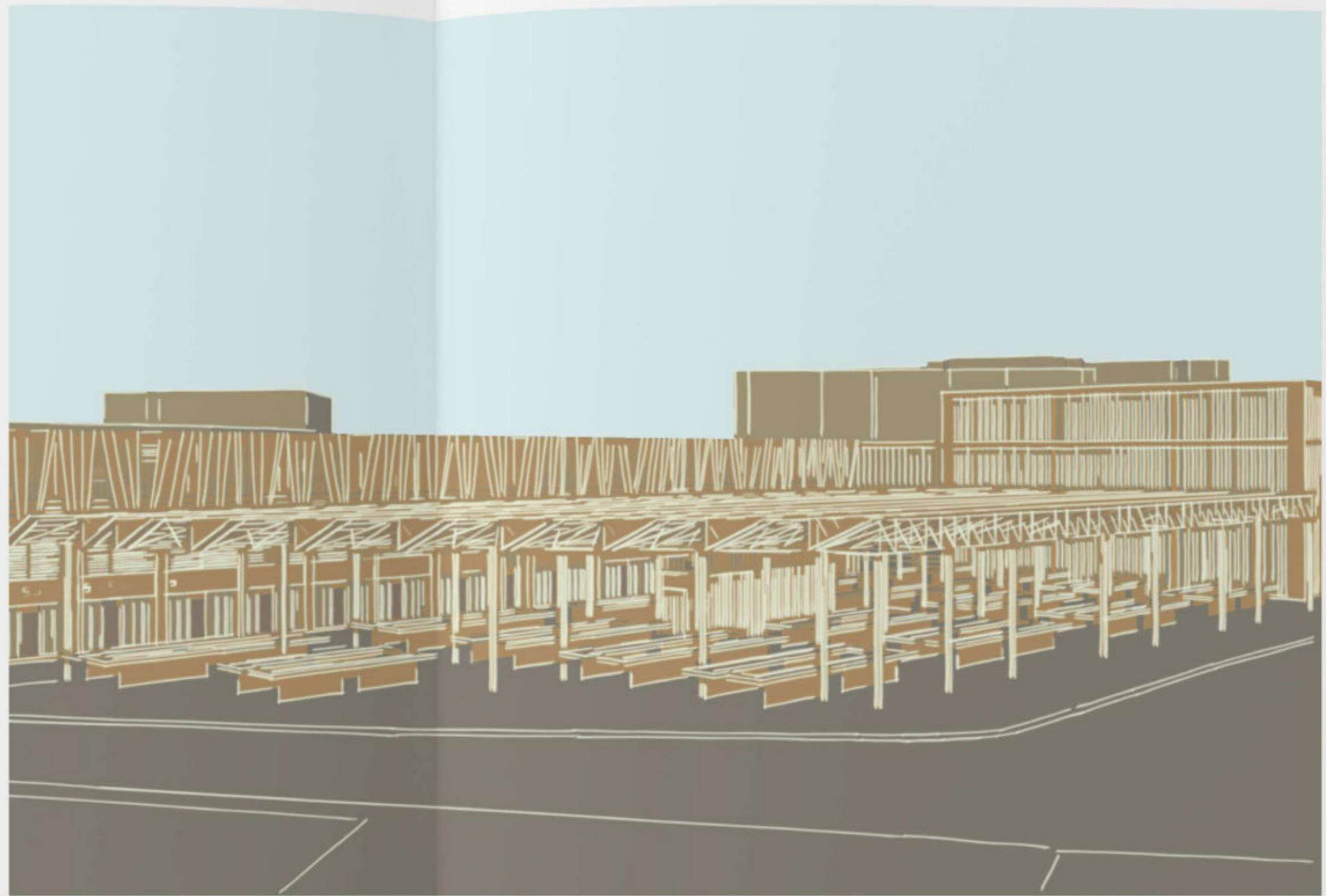
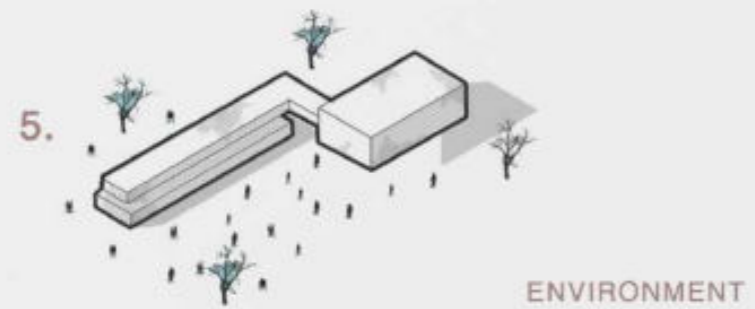
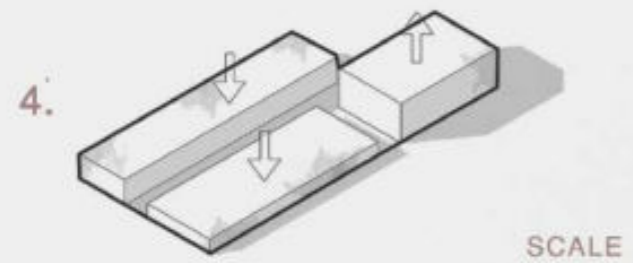
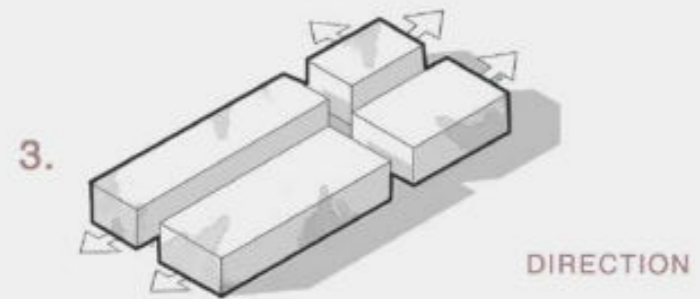
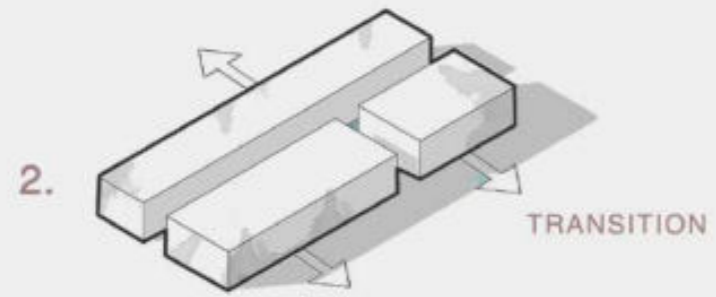
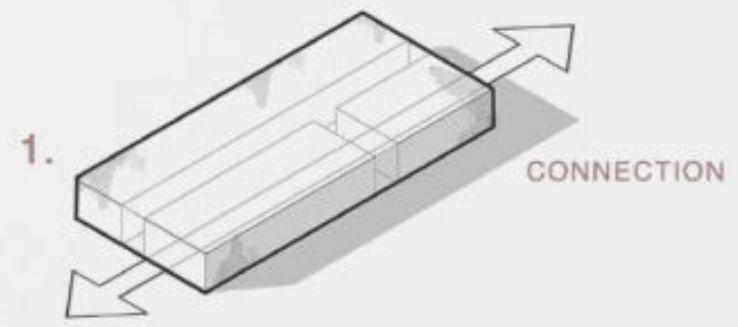


FIRST FLOOR PLAN



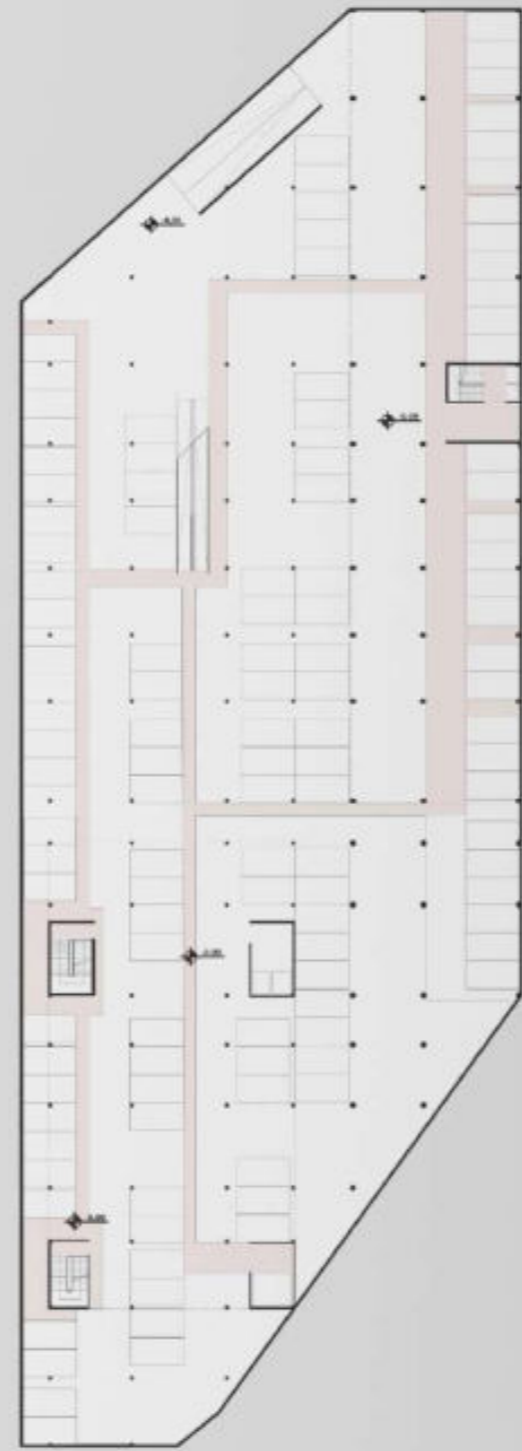
SECOND FLOOR PLAN







1ST BASEMENT FLOOR PLAN



2ND BASEMENT FLOOR PLAN





SECTION 1



SECTION 2



SECTION 3



EAST ELEVATION



NORTH ELEVATION



SOUTH ELEVATION



WEST ELEVATION





### 03/ LIFE CAMPUS FOR CHILDREN IN NEED OF PROTECTION

Studio VI - Social Awareness Project (KONYA)

With the Life Campus for Children in Need of Protection, it will serve a total of 110 children in the 0-6 age group, 24 in the 7-12 age group, 40 in the 13-18 age group and 6 in need of special care. By taking; It has been designed with approaches that will meet their physical, social, psychological and developmental needs, provide them with shelter, security, comfort and basic cultural infrastructure, allow them to grow up in conditions closest to family life, and increase their relations with nature.

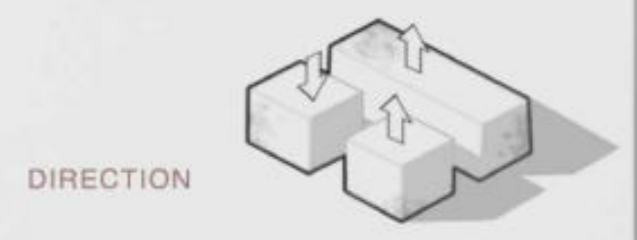
*"Nations whose children are not raised in a healthy and knowledgeable manner collapse as quickly as buildings with rotten foundations."*

MUSTAFA KEMAL ATATURK.





SITE PLAN







ADMINISTRATIVE UNITS GROUND FLOOR PLAN



ADMINISTRATIVE UNITS 1ST FLOOR PLAN



LIFE UNIT GROUND FLOOR PLAN



LIFE UNIT 1ST FLOOR PLAN





ADMINISTRATIVE UNITS SOUTHWEST ELEVATION



ADMINISTRATIVE UNITS NORTHWEST ELEVATION



ADMINISTRATIVE UNITS SECTION



ANY UNIT OF LIFE FRONT ELEVATION



ANY UNIT OF LIFE LEFT SIDE ELEVATION



ANY UNIT OF LIFE SECTION



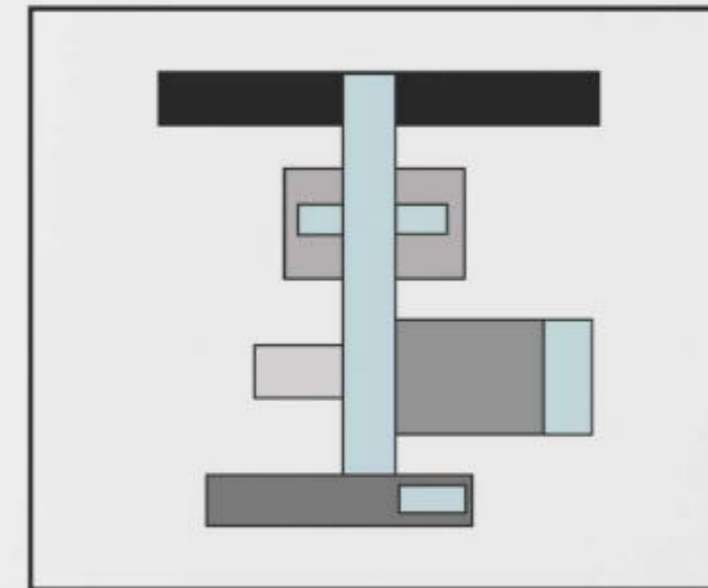
## 04/ BOUTIQUE HOTEL PROJECT

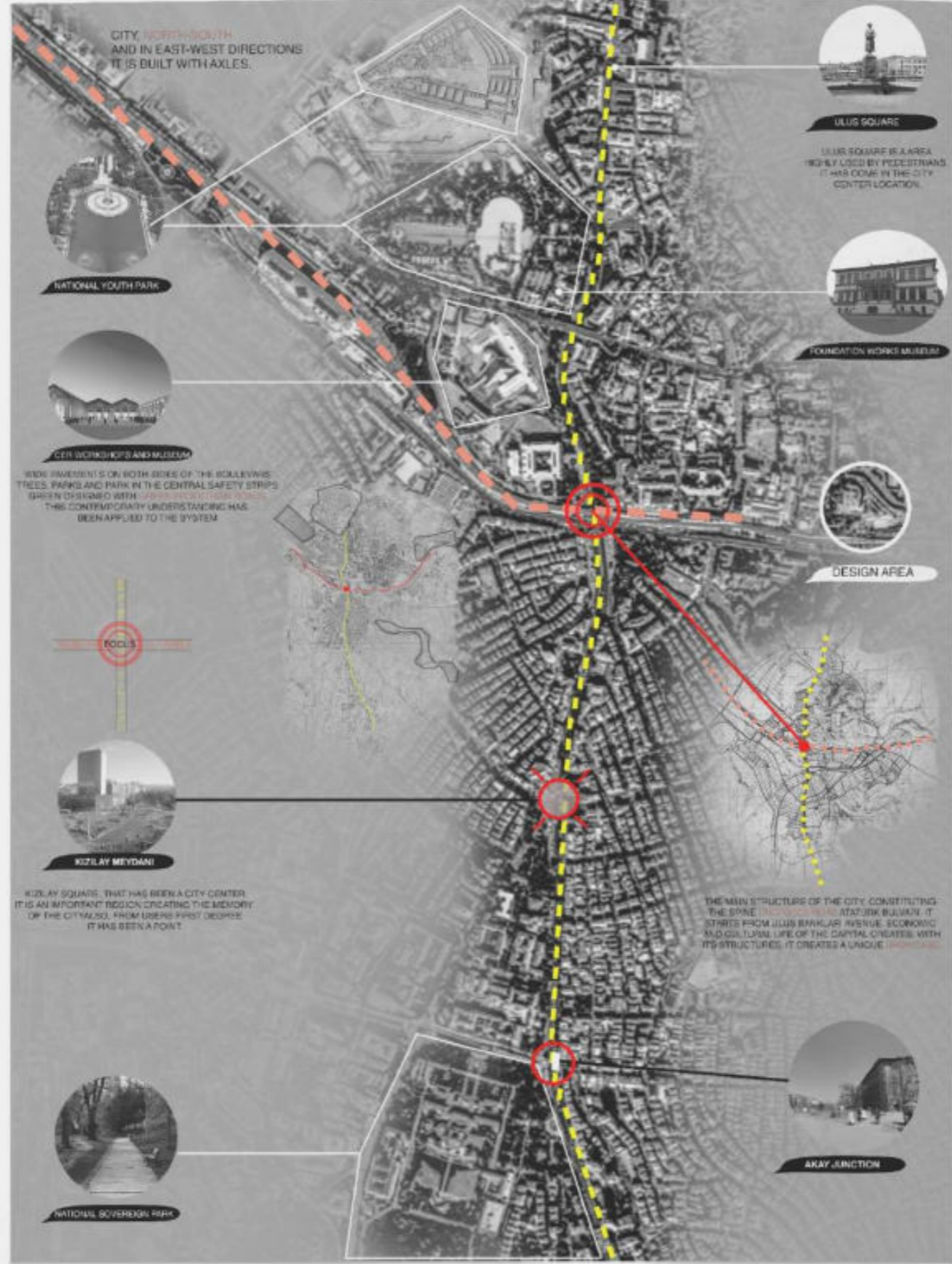
Studio V - Accommodation Project (ANKARA)

This project was designed as a result of the decisions taken in line with the needs of the city and the region. Accommodation consists of social, administrative and cultural units. The masses are connected to the main axis, which functions as the main exhibition area. The concept of the formation of the city has been adopted.

*The main future of architecture. How to create an environment is a healing thought. On the one hand, it is about housing, but also about working with pleasure.*

ZAHA HADID.





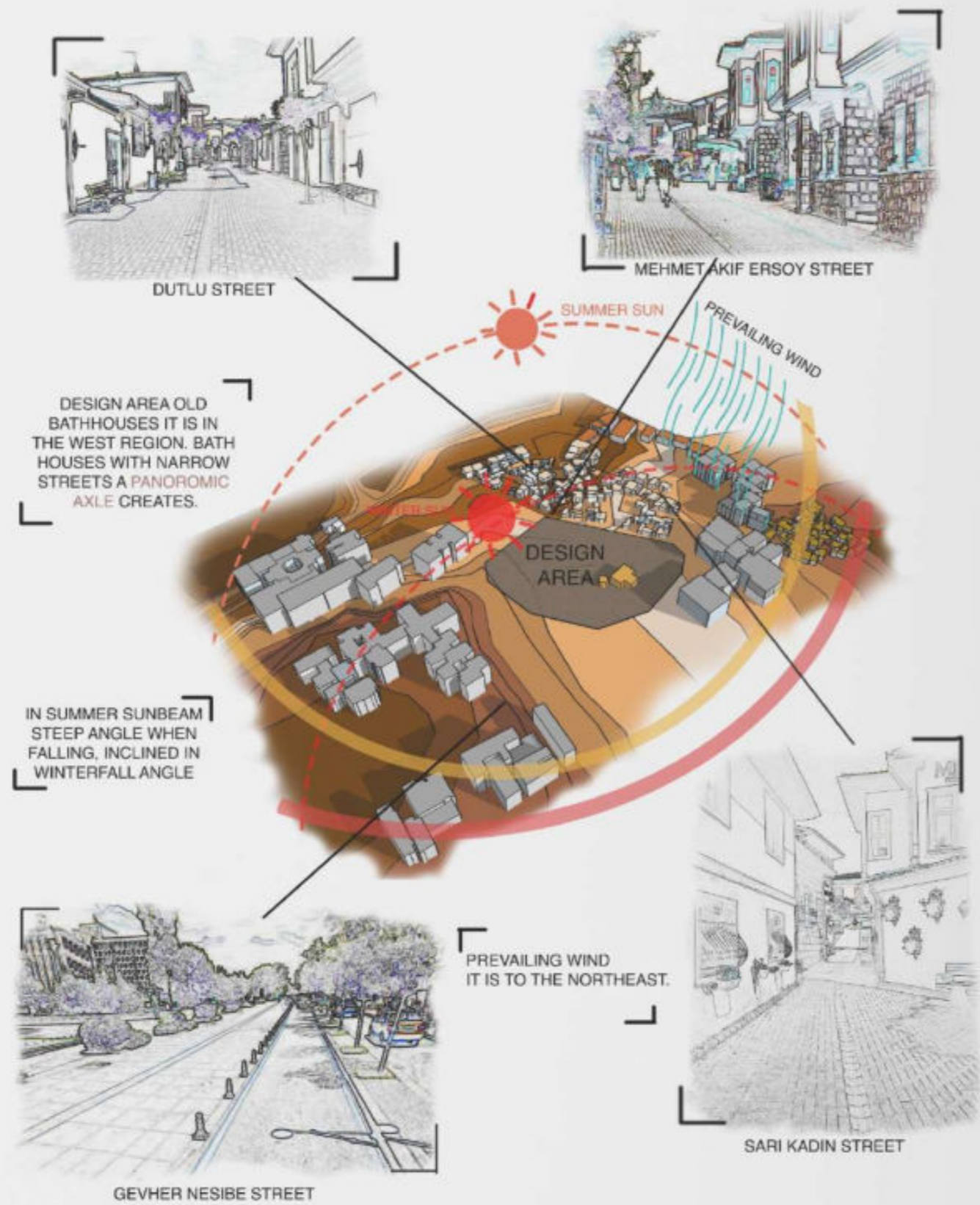


GROUND FLOOR PLAN

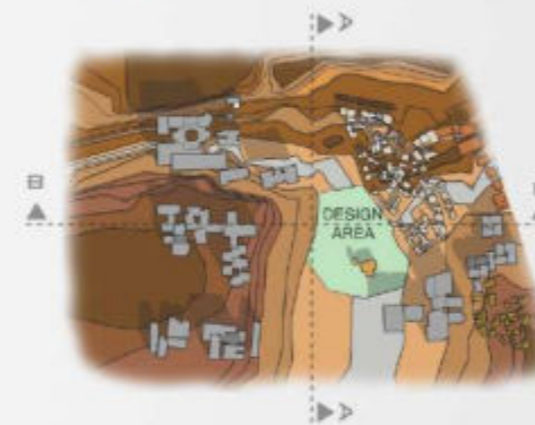


1ST FLOOR PLAN

PHYSICAL ENVIRONMENTAL ANALYSIS



SLOPE ANALYSIS



Sloping areas around the design area surrounded by but the design space has a flat (non-sloping) structure.

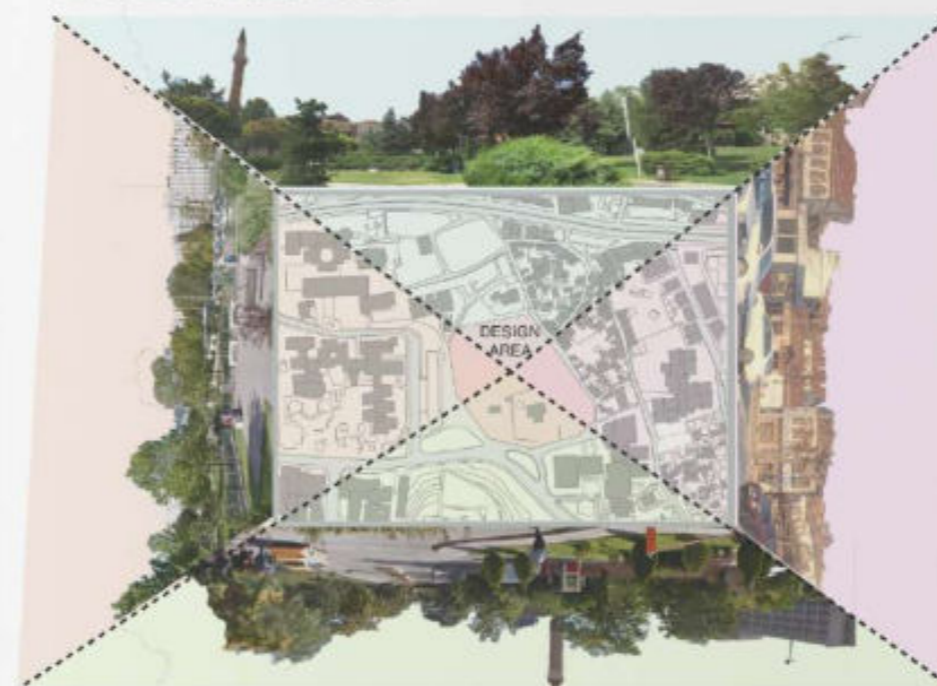


Towards the east in section view It is seen that the slope increases



At the same time, silhouette layers are intertwined. relationship arises.

LANDSCAPE ANALYSIS

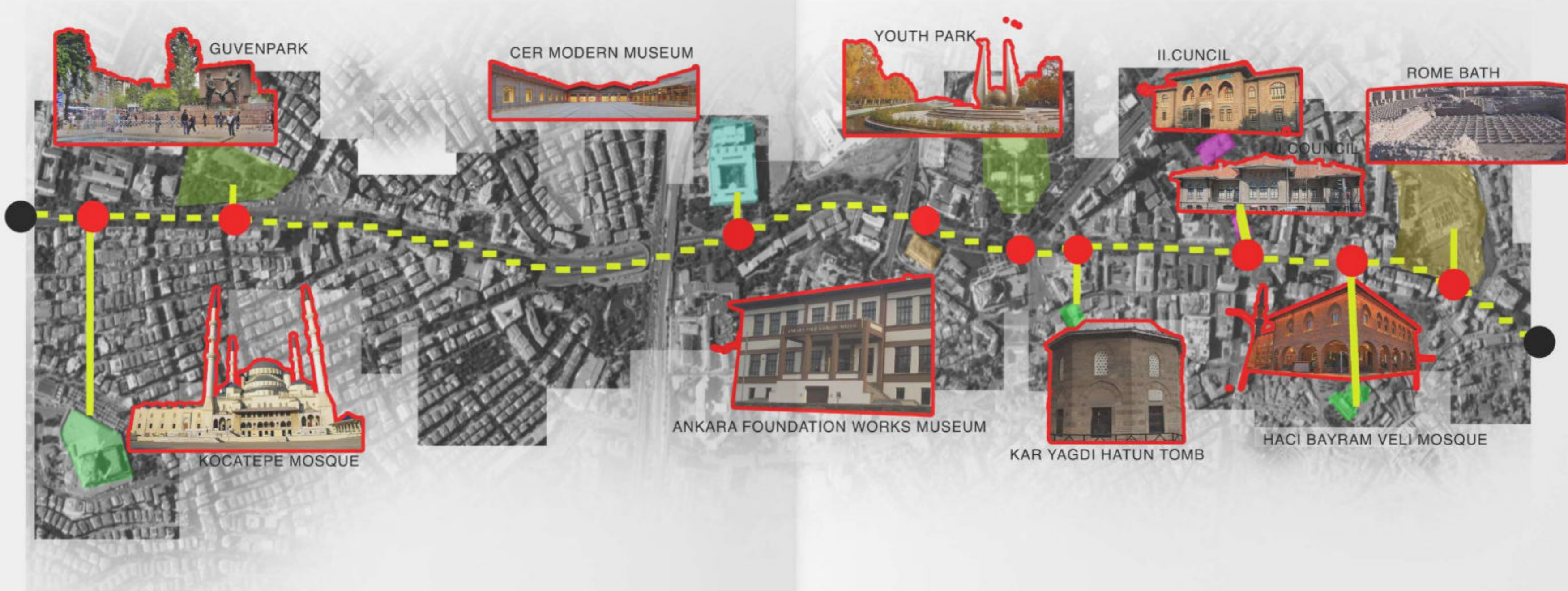


West of the design area historical Hamamonu Houses filled with.

Design area landscape it is insufficient in care western and east regionn full north and south opportunity for open view gives.



EAST AND WEST OF THE DESIGN AREA IS SURROUNDED BY BUILDINGS NORTH AND SOUTH OPEN ZONE LANDSCAPE ORIENTATION IT IS IN THE SOUTH REGION.



GUVENPARK

CER MODERN MUSEUM

YOUTH PARK

II.CUNCIL

ROME BATH

KOCATEPE MOSQUE

ANKARA FOUNDATION WORKS MUSEUM

KAR YAGDI HATUN TOMB

HACI BAYRAM VELI MOSQUE



SECTION 1



SECTION 2



SECTION 3



NORTHWEST ELEVATION



SOUTHWEST ELEVATION

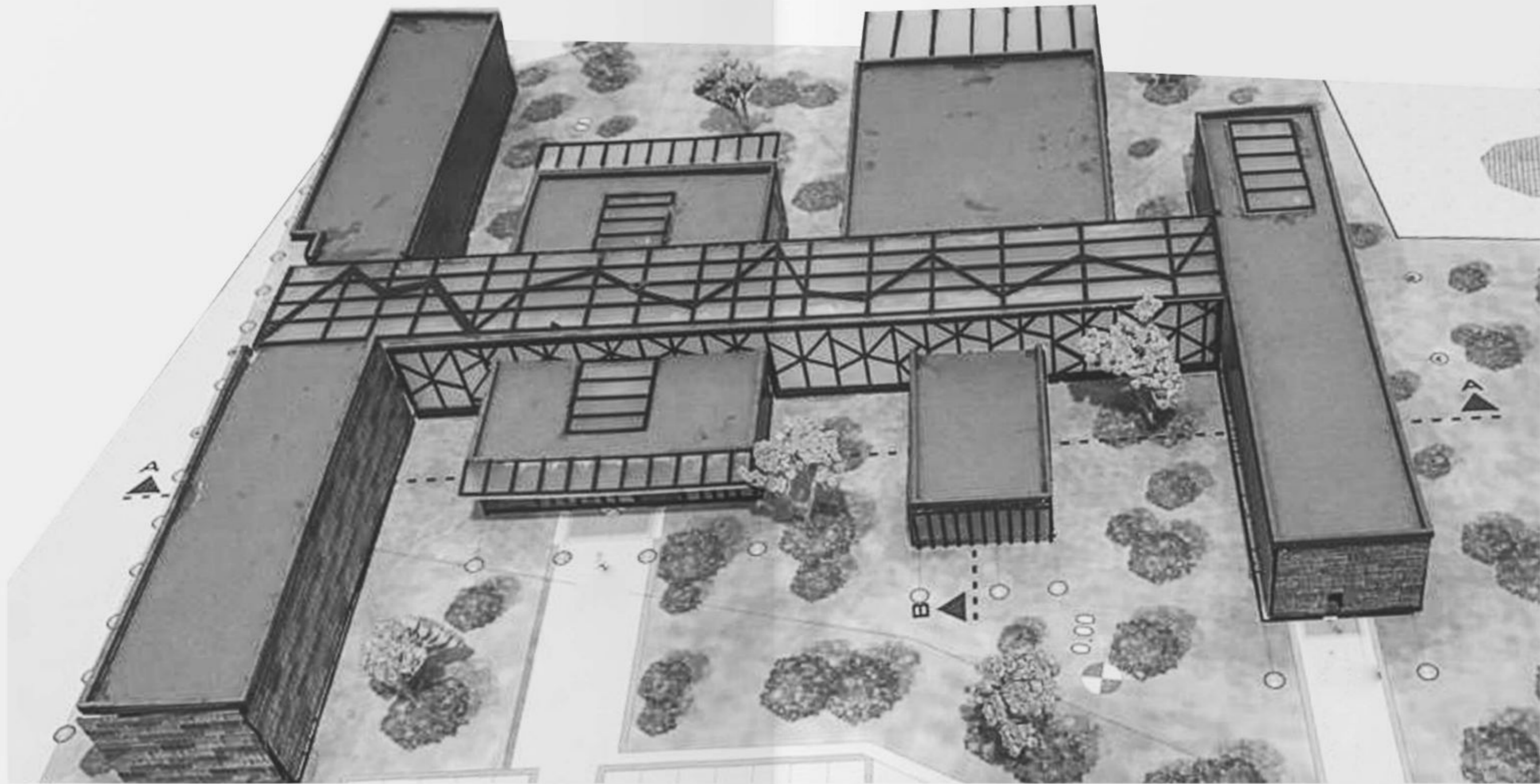


NORTHWEST ELEVATION

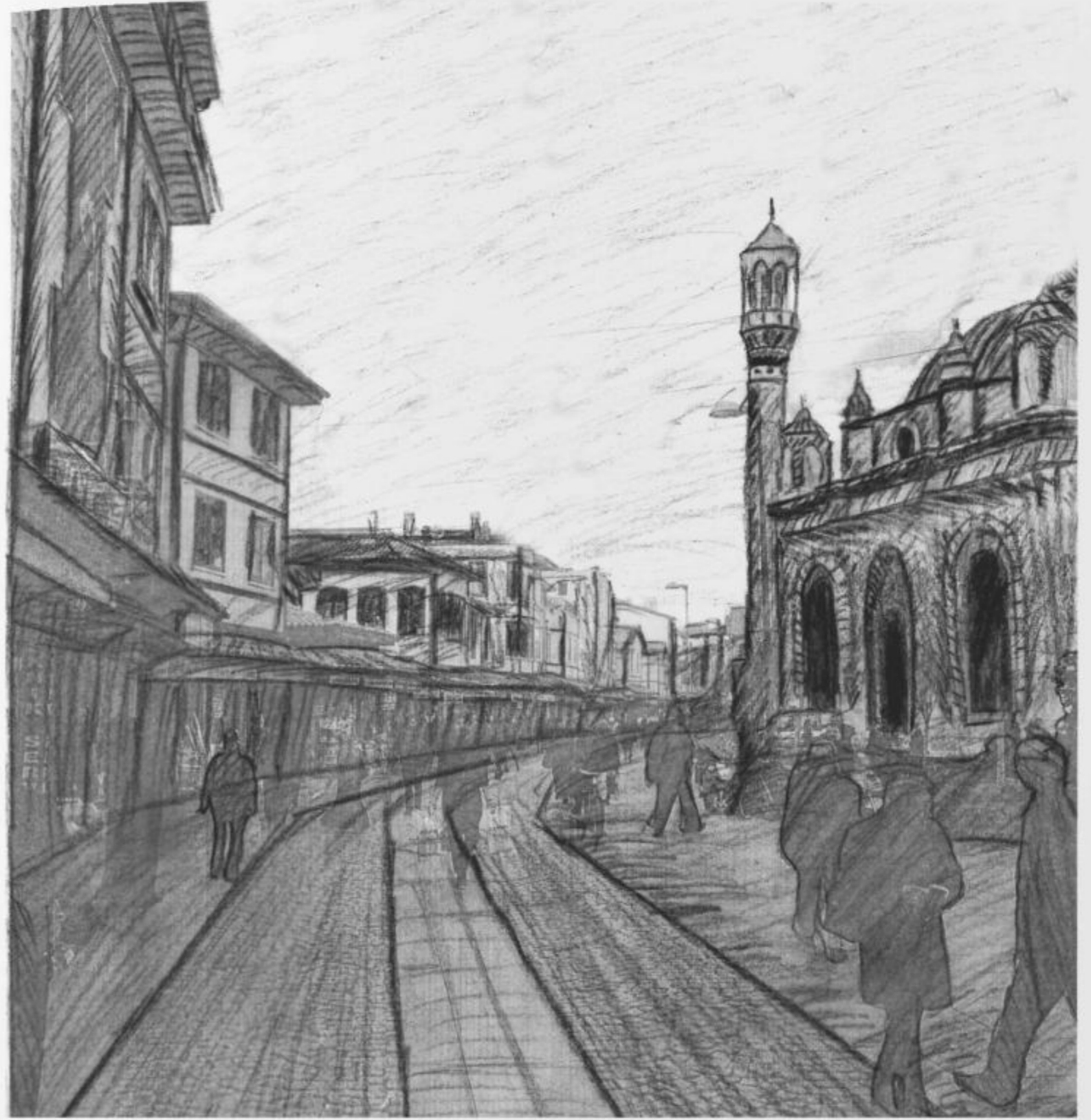


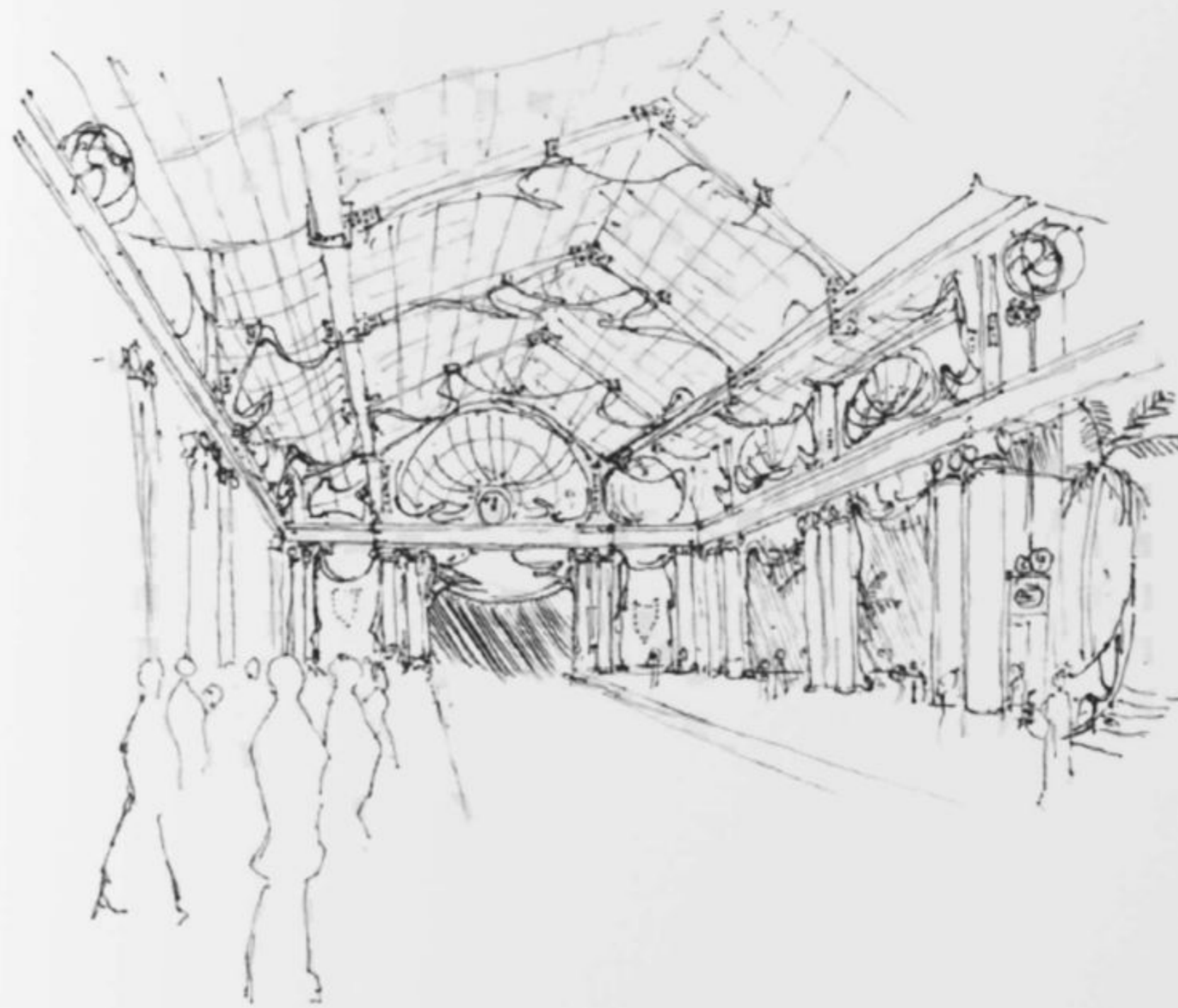
SOUTHEAST ELEVATION

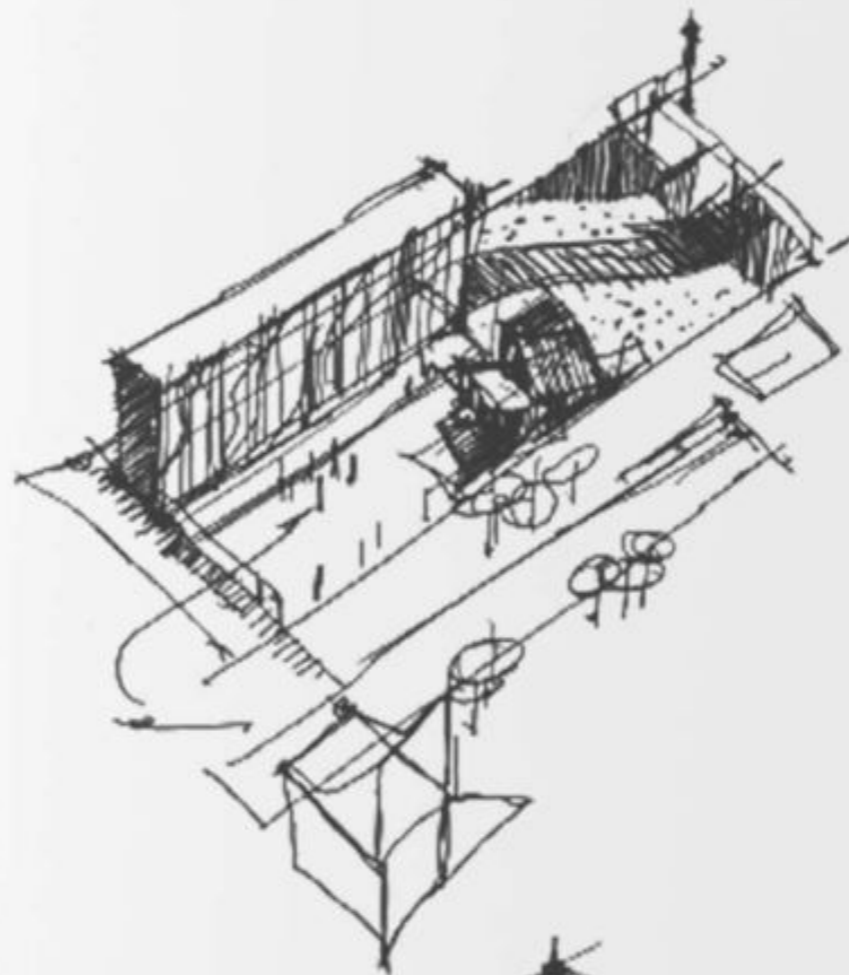
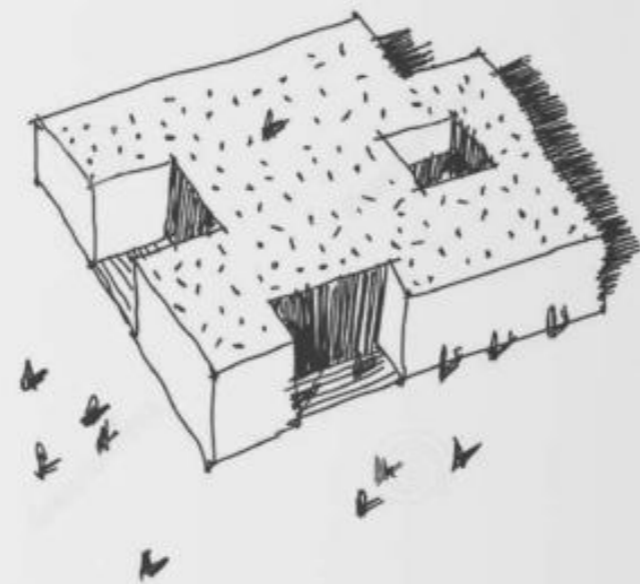
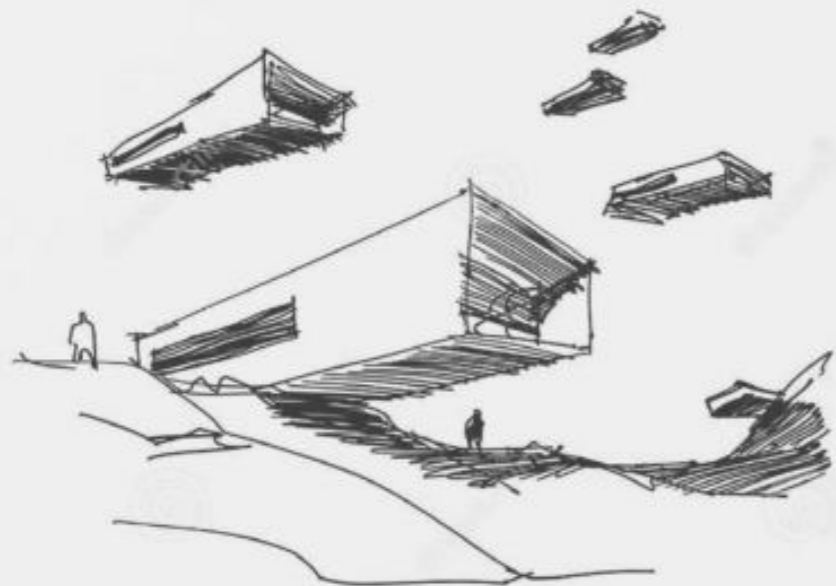




/SKETCHS







/RENDERING

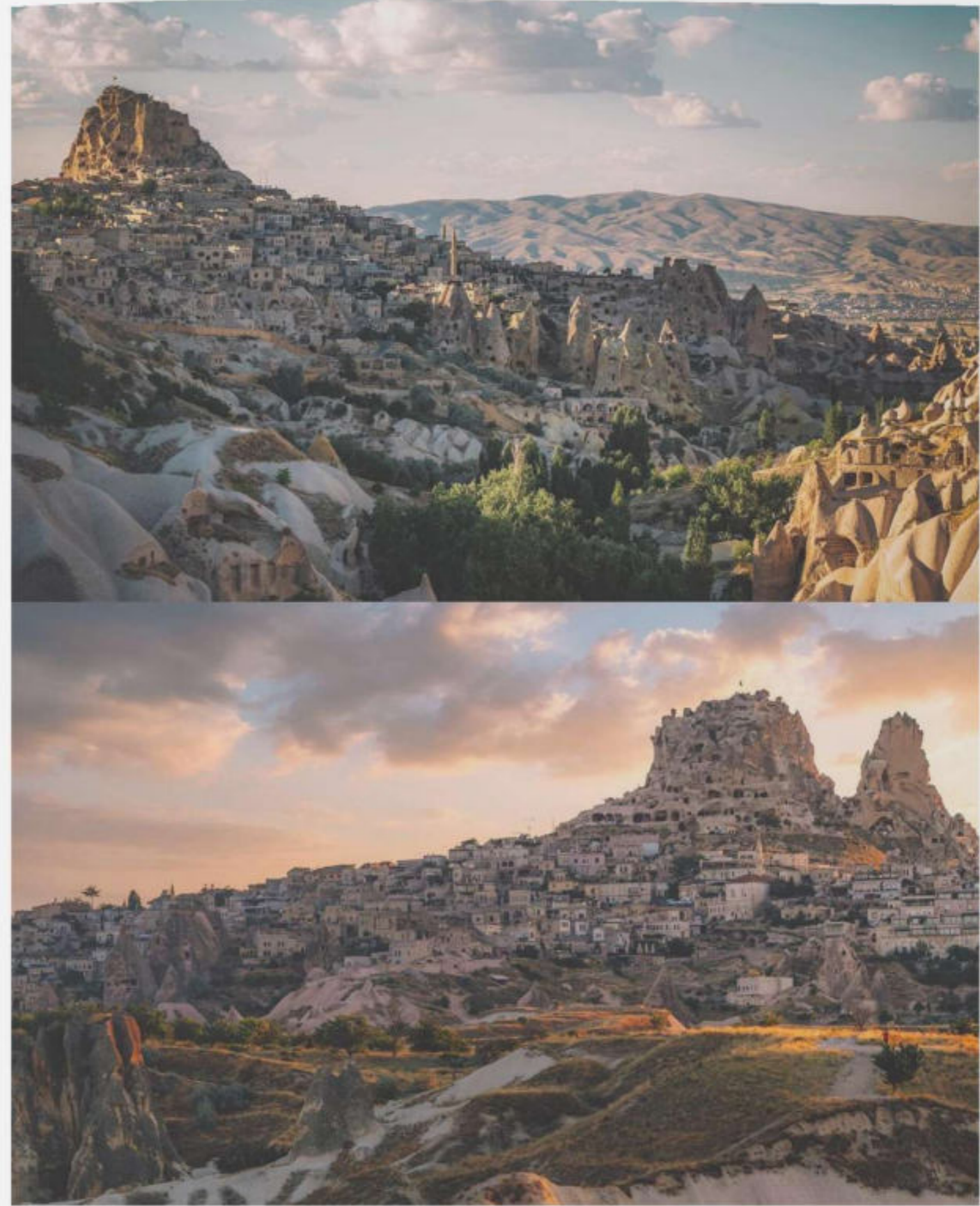






/PHOTOGRAPHY



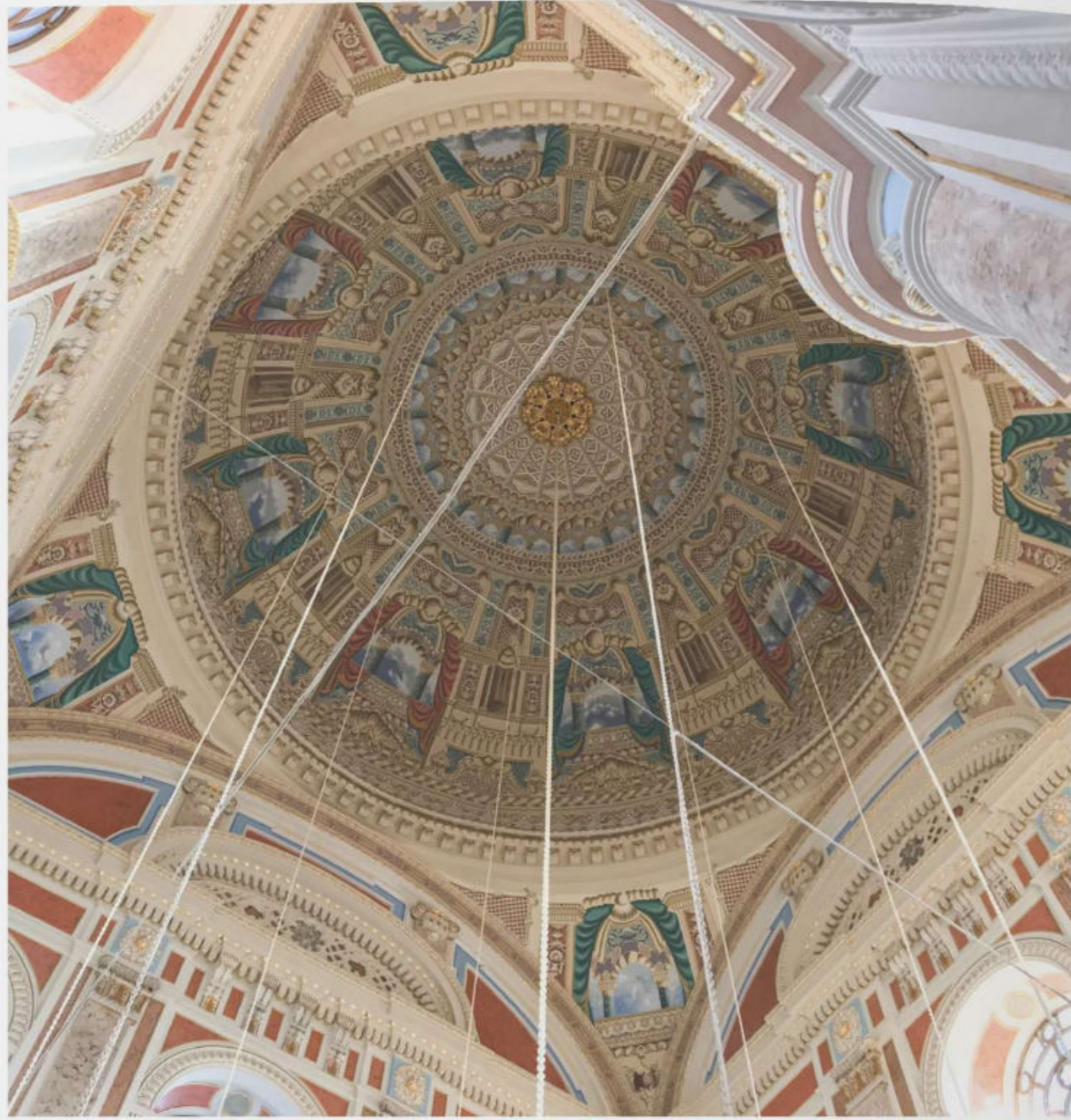




Hagia Sophia



Hagia Sophia





SEYFALI KARKIN  
seyfalikarkin@gmail.com