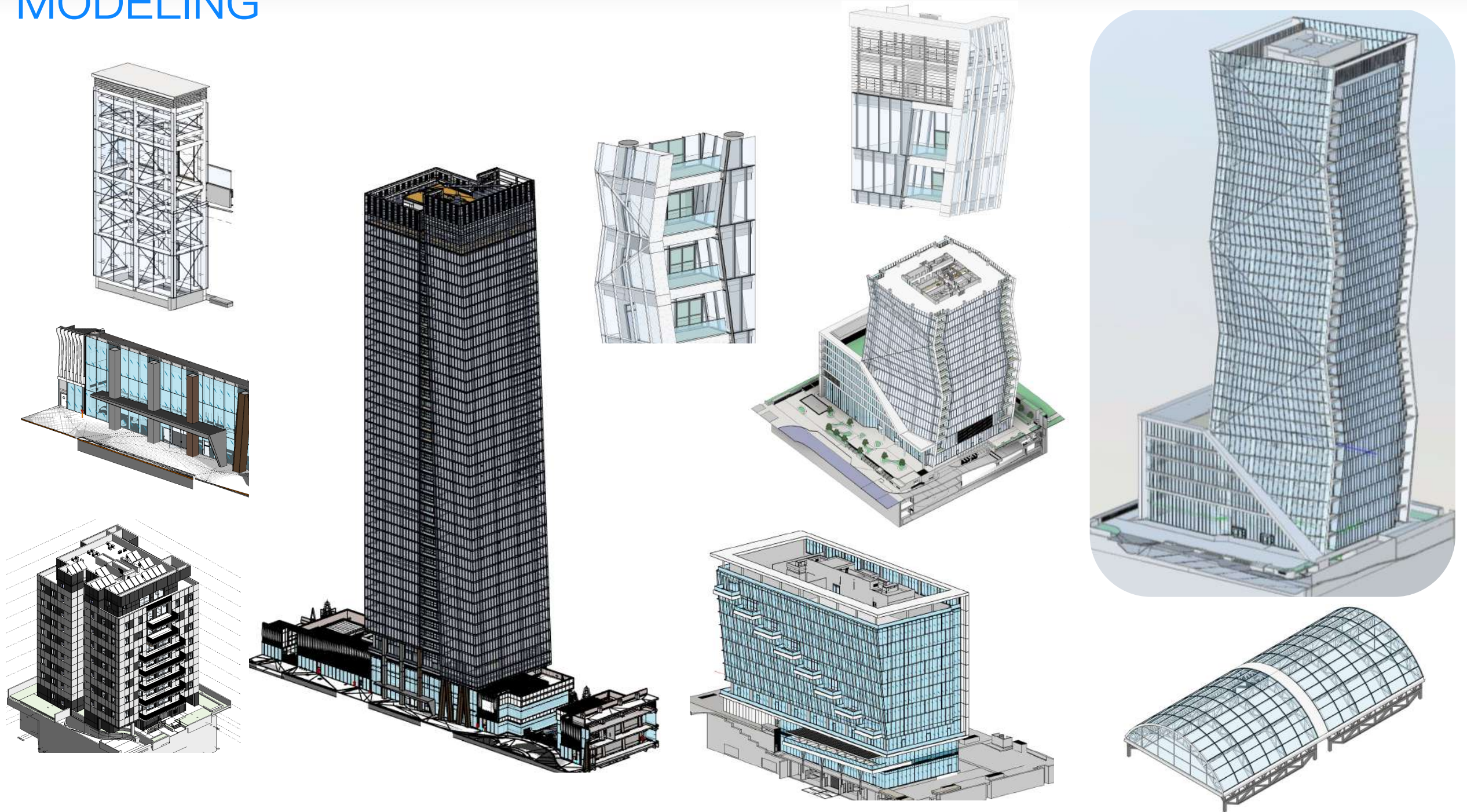
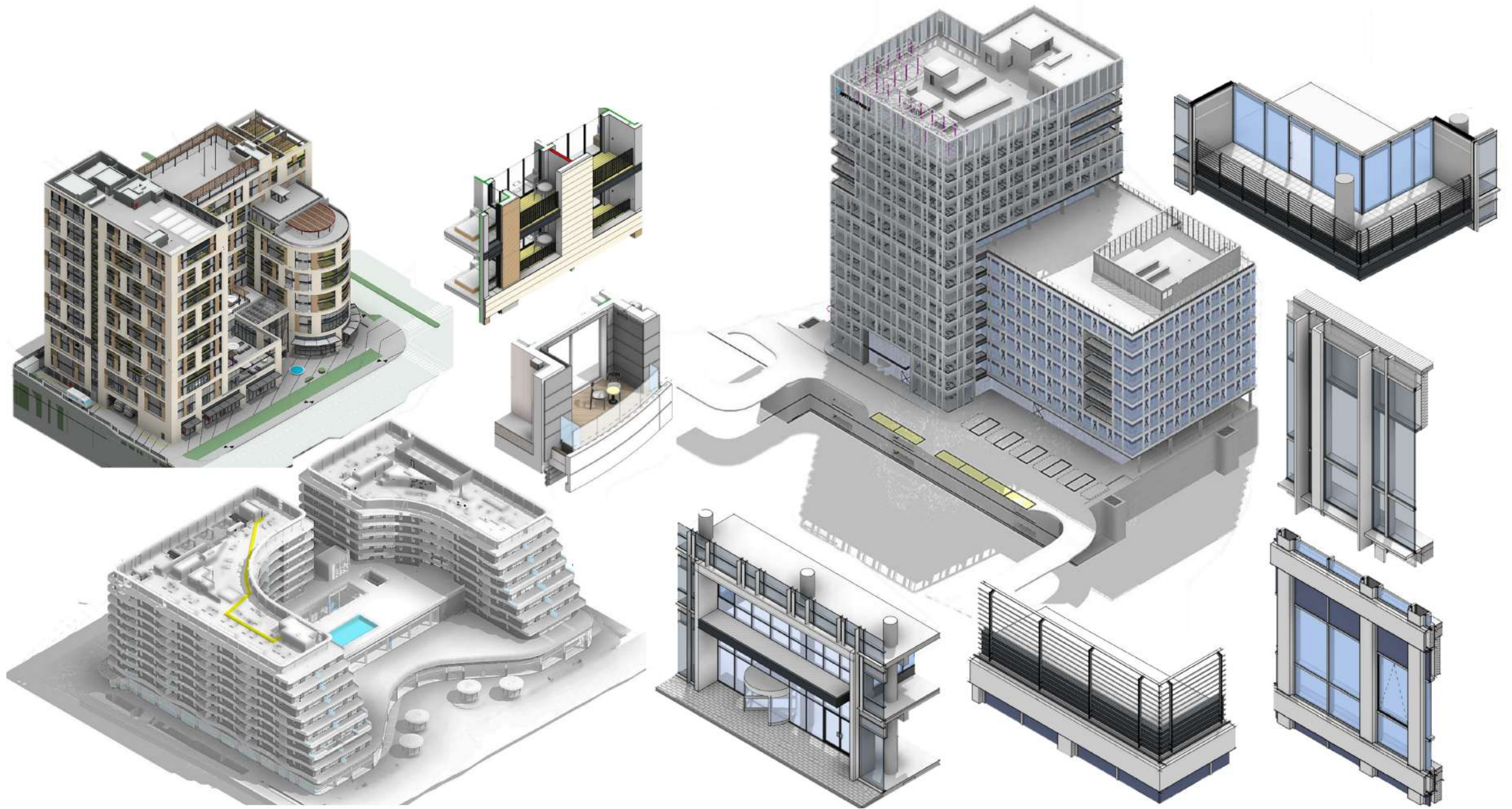


# MODELING

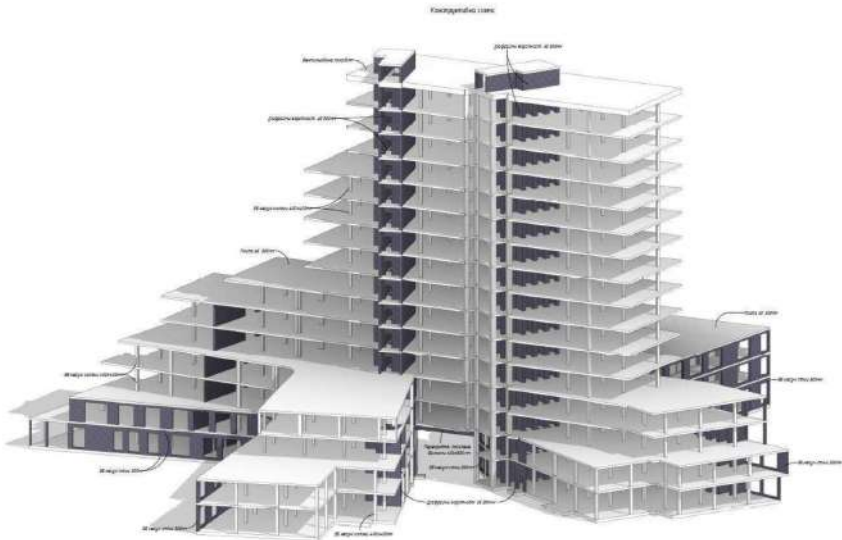


\*Please, note, that due to NDAs with clients, only a limited number of projects can be presented in the Portfolio

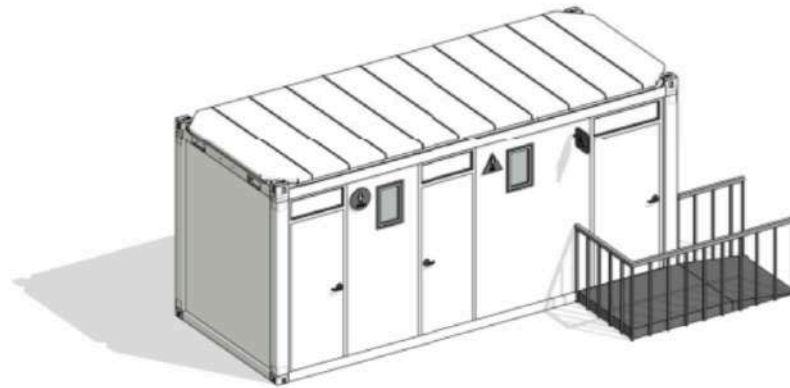
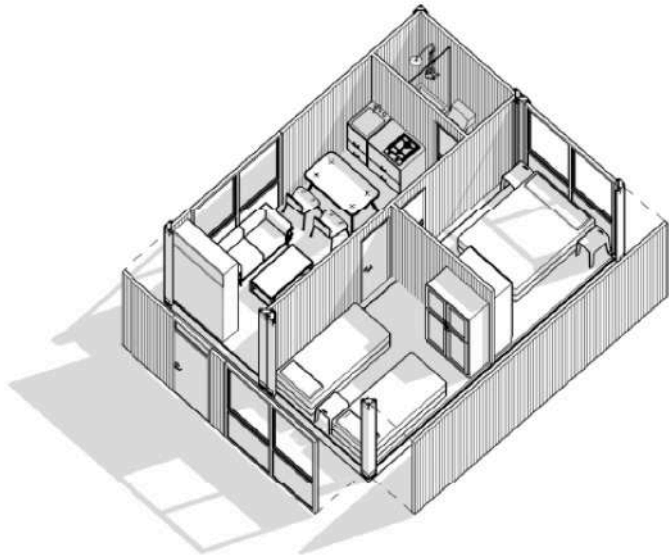
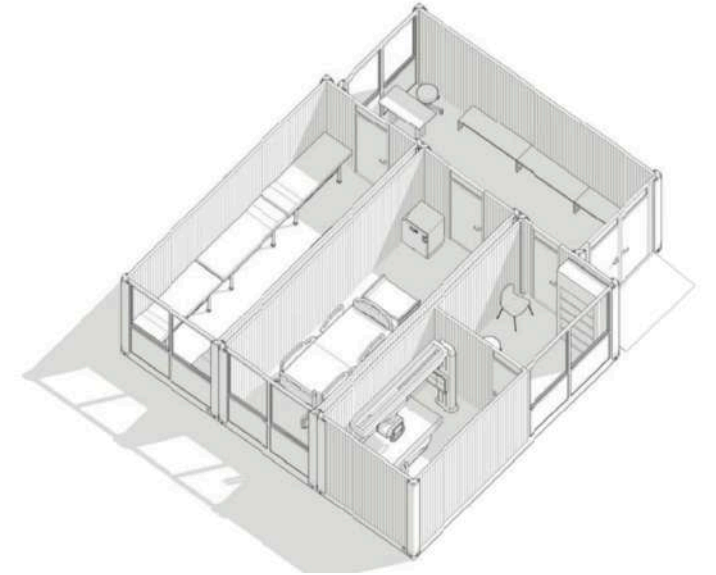
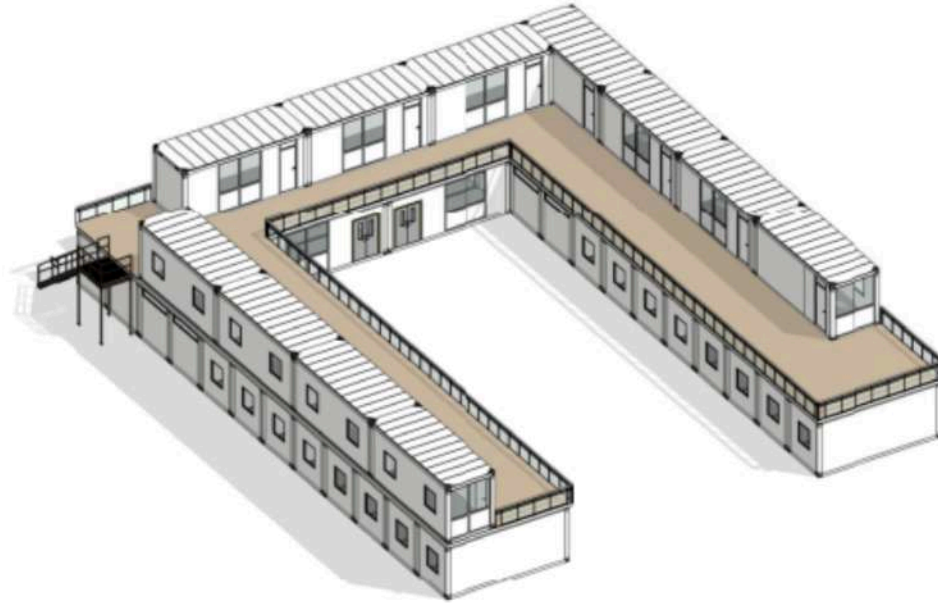
# MODELING



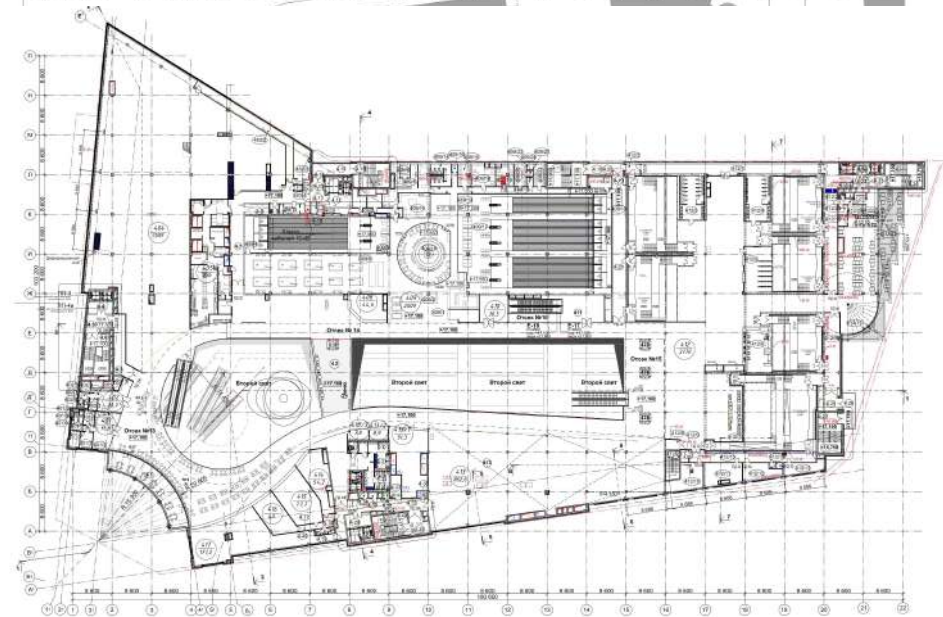
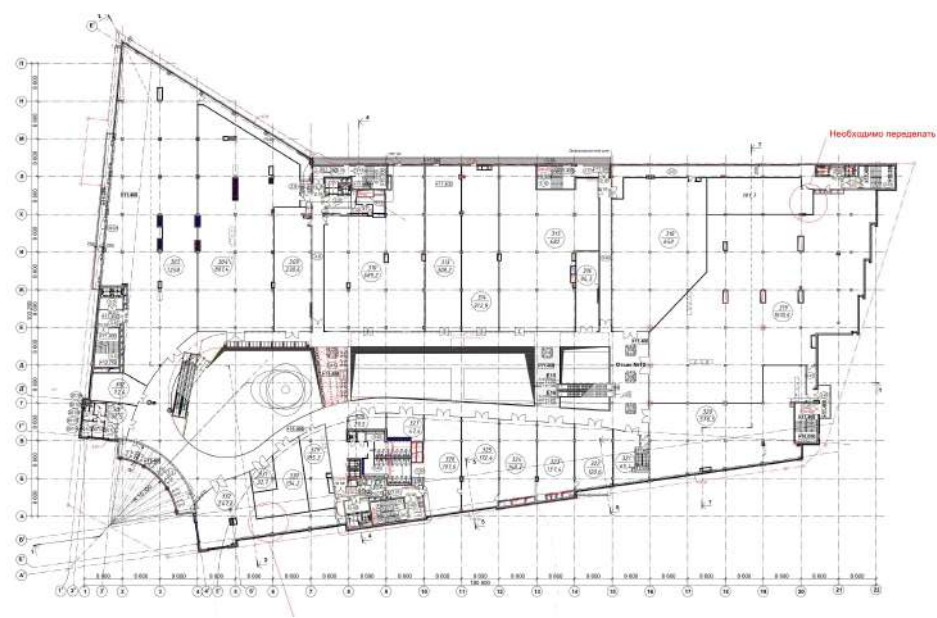
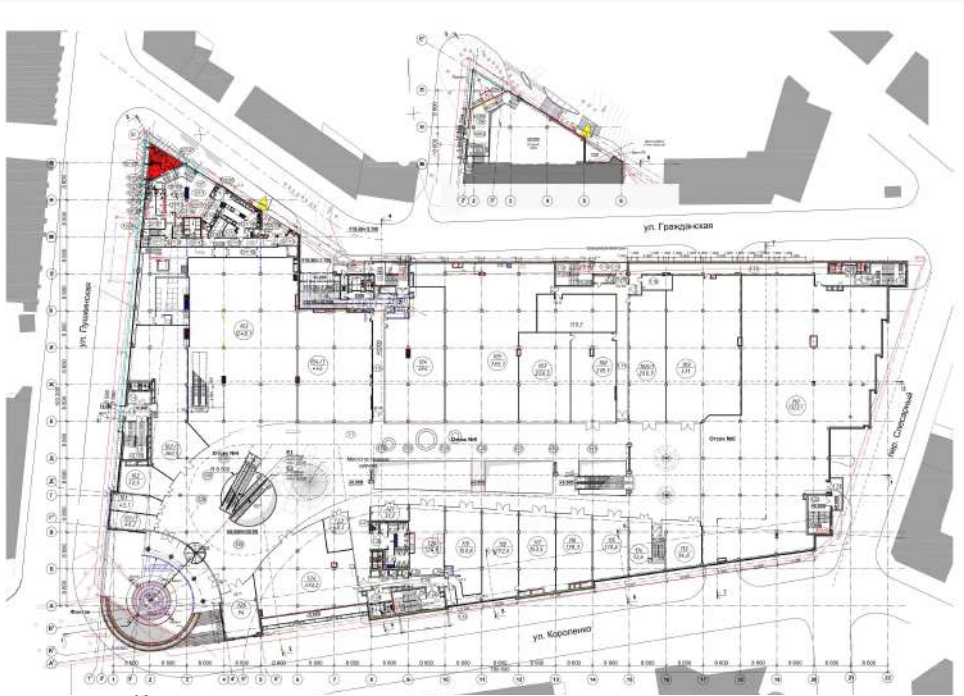
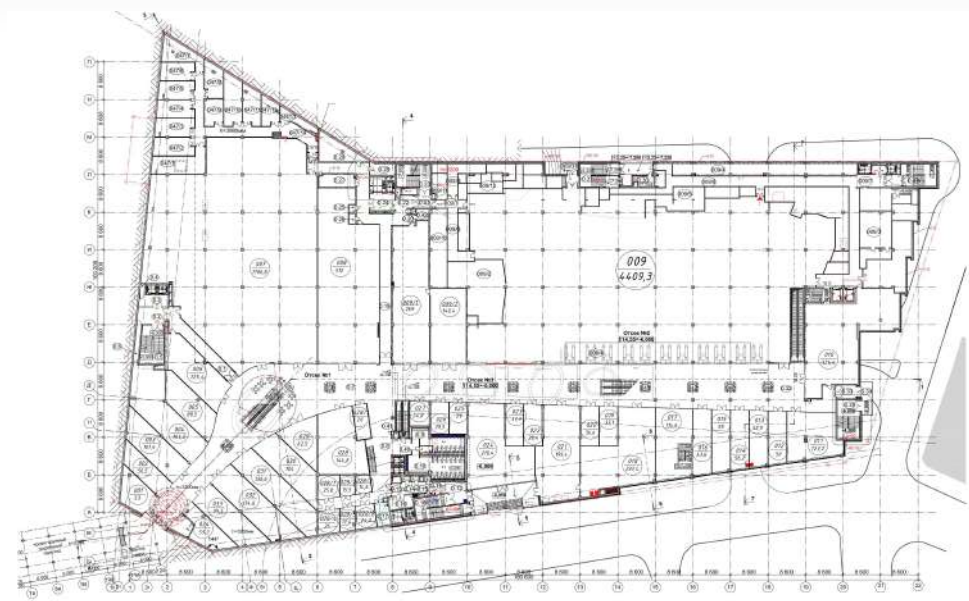
# MODELING



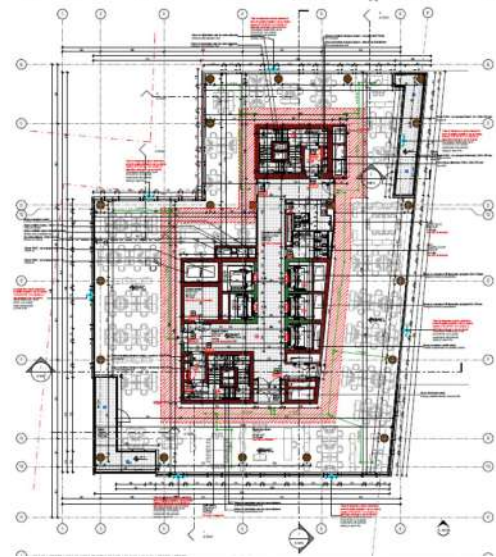
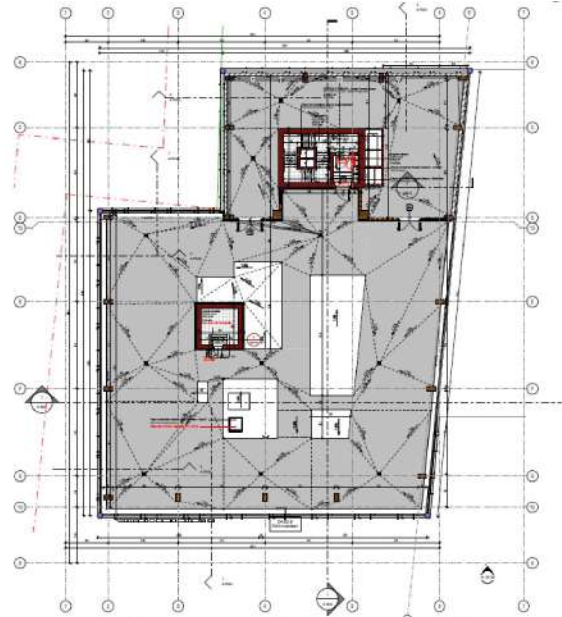
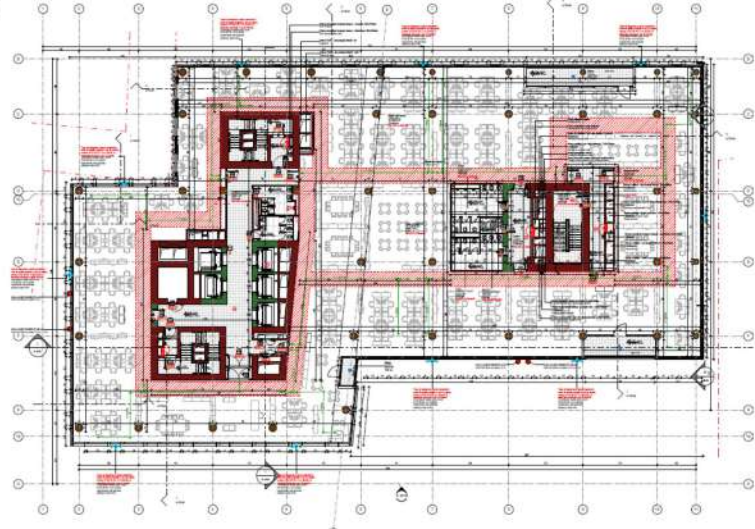
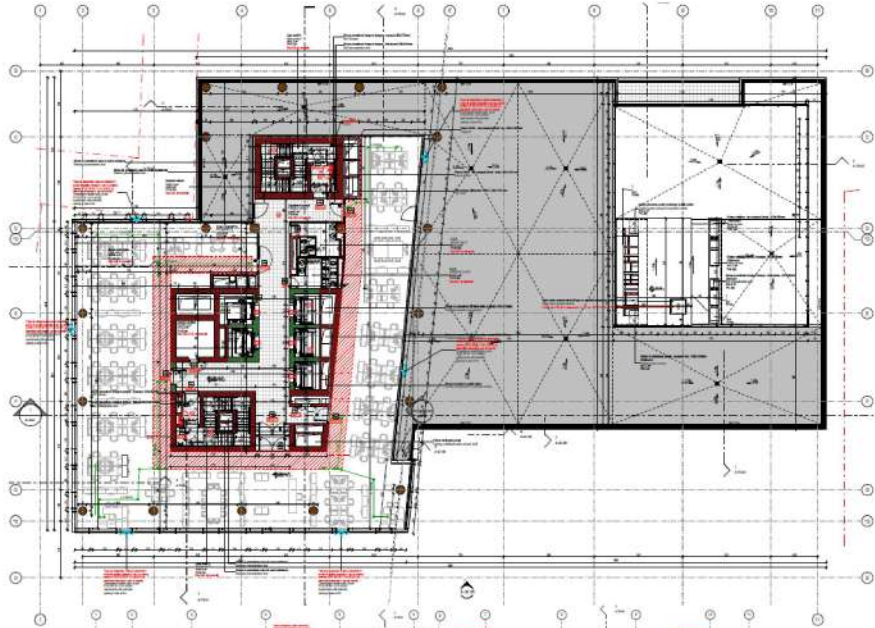
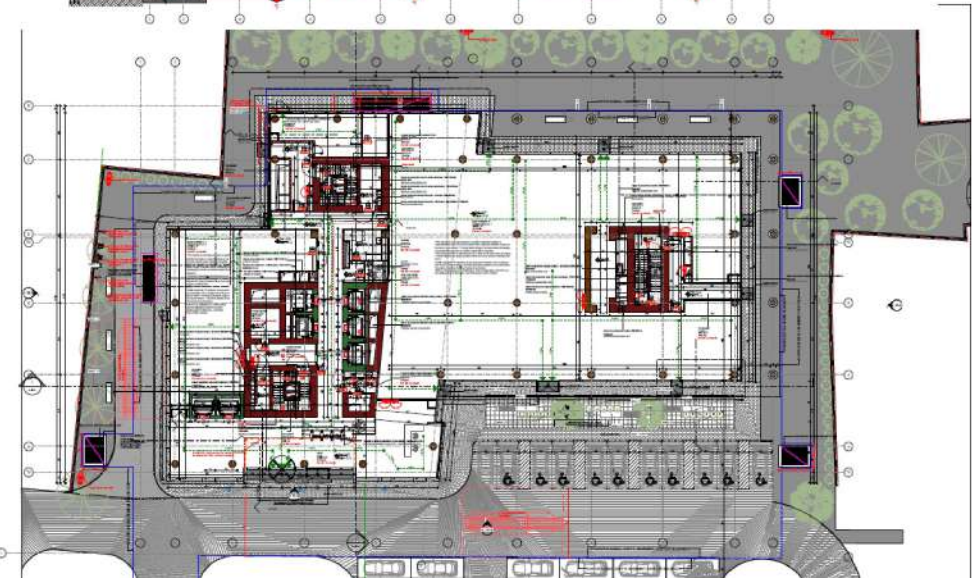
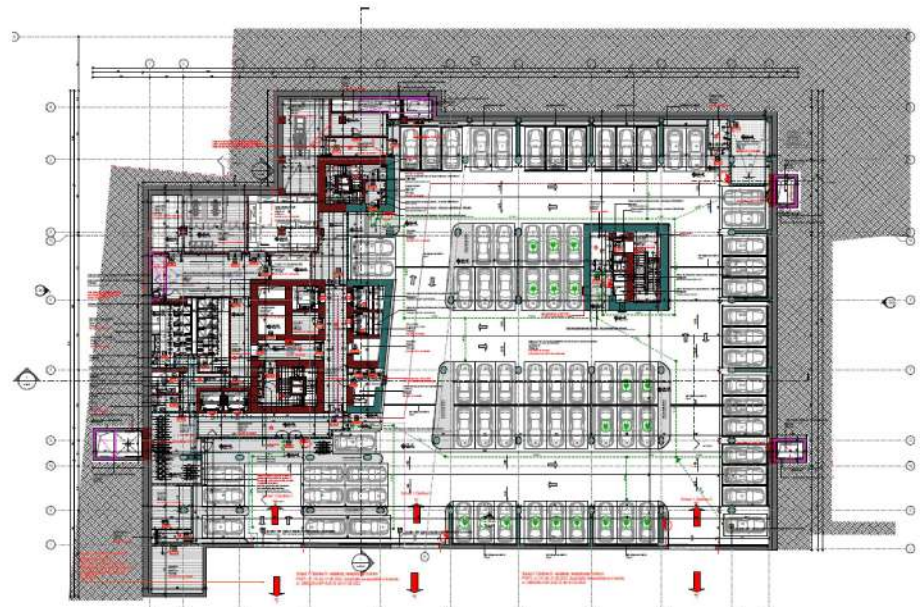
# MODELING



# PLANS



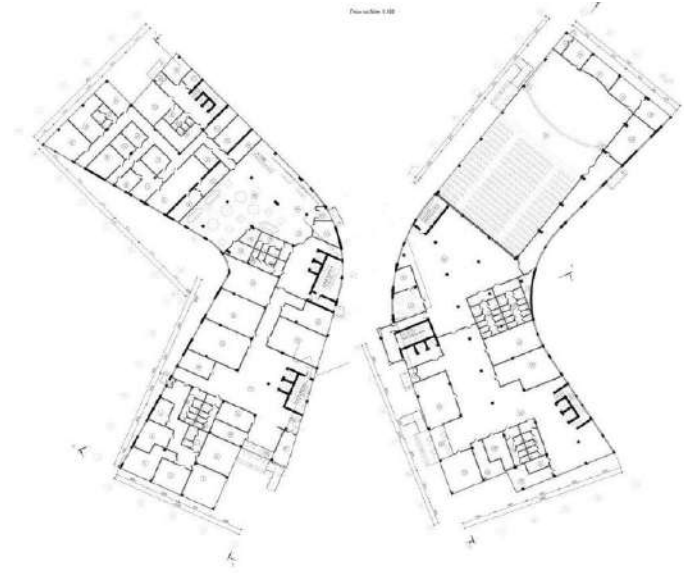
# PLANS



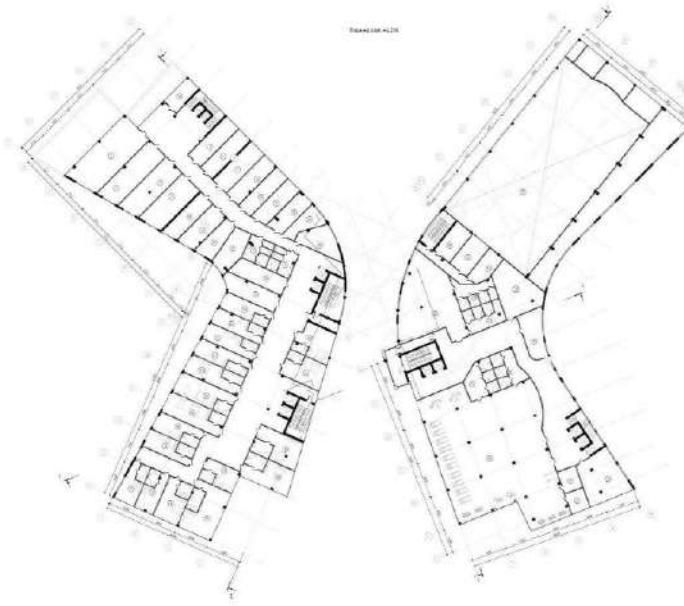
# PLANS



# PLANS



| Socioeconomic indicators of the ERM |                          |
|-------------------------------------|--------------------------|
| 1                                   | Age                      |
| 2                                   | Gender                   |
| 3                                   | Marital status           |
| 4                                   | Education                |
| 5                                   | Occupation               |
| 6                                   | Income                   |
| 7                                   | Health status            |
| 8                                   | Living arrangement       |
| 9                                   | Religion                 |
| 10                                  | Political affiliation    |
| 11                                  | Attitude towards the ERM |
| 12                                  | Attitude towards the ERM |
| 13                                  | Attitude towards the ERM |
| 14                                  | Attitude towards the ERM |
| 15                                  | Attitude towards the ERM |
| 16                                  | Attitude towards the ERM |
| 17                                  | Attitude towards the ERM |
| 18                                  | Attitude towards the ERM |
| 19                                  | Attitude towards the ERM |
| 20                                  | Attitude towards the ERM |
| 21                                  | Attitude towards the ERM |
| 22                                  | Attitude towards the ERM |
| 23                                  | Attitude towards the ERM |
| 24                                  | Attitude towards the ERM |
| 25                                  | Attitude towards the ERM |
| 26                                  | Attitude towards the ERM |
| 27                                  | Attitude towards the ERM |
| 28                                  | Attitude towards the ERM |
| 29                                  | Attitude towards the ERM |
| 30                                  | Attitude towards the ERM |
| 31                                  | Attitude towards the ERM |
| 32                                  | Attitude towards the ERM |
| 33                                  | Attitude towards the ERM |
| 34                                  | Attitude towards the ERM |
| 35                                  | Attitude towards the ERM |
| 36                                  | Attitude towards the ERM |
| 37                                  | Attitude towards the ERM |
| 38                                  | Attitude towards the ERM |
| 39                                  | Attitude towards the ERM |
| 40                                  | Attitude towards the ERM |
| 41                                  | Attitude towards the ERM |
| 42                                  | Attitude towards the ERM |
| 43                                  | Attitude towards the ERM |
| 44                                  | Attitude towards the ERM |
| 45                                  | Attitude towards the ERM |
| 46                                  | Attitude towards the ERM |
| 47                                  | Attitude towards the ERM |
| 48                                  | Attitude towards the ERM |
| 49                                  | Attitude towards the ERM |
| 50                                  | Attitude towards the ERM |
| 51                                  | Attitude towards the ERM |
| 52                                  | Attitude towards the ERM |
| 53                                  | Attitude towards the ERM |
| 54                                  | Attitude towards the ERM |
| 55                                  | Attitude towards the ERM |
| 56                                  | Attitude towards the ERM |
| 57                                  | Attitude towards the ERM |
| 58                                  | Attitude towards the ERM |
| 59                                  | Attitude towards the ERM |
| 60                                  | Attitude towards the ERM |
| 61                                  | Attitude towards the ERM |
| 62                                  | Attitude towards the ERM |
| 63                                  | Attitude towards the ERM |
| 64                                  | Attitude towards the ERM |
| 65                                  | Attitude towards the ERM |
| 66                                  | Attitude towards the ERM |
| 67                                  | Attitude towards the ERM |
| 68                                  | Attitude towards the ERM |
| 69                                  | Attitude towards the ERM |
| 70                                  | Attitude towards the ERM |
| 71                                  | Attitude towards the ERM |
| 72                                  | Attitude towards the ERM |
| 73                                  | Attitude towards the ERM |
| 74                                  | Attitude towards the ERM |
| 75                                  | Attitude towards the ERM |
| 76                                  | Attitude towards the ERM |
| 77                                  | Attitude towards the ERM |
| 78                                  | Attitude towards the ERM |
| 79                                  | Attitude towards the ERM |
| 80                                  | Attitude towards the ERM |
| 81                                  | Attitude towards the ERM |
| 82                                  | Attitude towards the ERM |
| 83                                  | Attitude towards the ERM |
| 84                                  | Attitude towards the ERM |
| 85                                  | Attitude towards the ERM |
| 86                                  | Attitude towards the ERM |
| 87                                  | Attitude towards the ERM |
| 88                                  | Attitude towards the ERM |
| 89                                  | Attitude towards the ERM |
| 90                                  | Attitude towards the ERM |
| 91                                  | Attitude towards the ERM |
| 92                                  | Attitude towards the ERM |
| 93                                  | Attitude towards the ERM |
| 94                                  | Attitude towards the ERM |
| 95                                  | Attitude towards the ERM |
| 96                                  | Attitude towards the ERM |
| 97                                  | Attitude towards the ERM |
| 98                                  | Attitude towards the ERM |
| 99                                  | Attitude towards the ERM |
| 100                                 | Attitude towards the ERM |



| Table 1. Summary of the data used in the study |      | Total number of cases |                     |
|--|------|-----------------------|---------------------|
| Case   | Year | Number of cases       | Percentage of cases |
| 1  | 1998 | 10                    | 1.0                 |
| 2  | 1999 | 10                    | 1.0                 |
| 3  | 2000 | 10                    | 1.0                 |
| 4  | 2001 | 10                    | 1.0                 |
| 5  | 2002 | 10                    | 1.0                 |
| 6  | 2003 | 10                    | 1.0                 |
| 7  | 2004 | 10                    | 1.0                 |
| 8  | 2005 | 10                    | 1.0                 |
| 9  | 2006 | 10                    | 1.0                 |
| 10   | 2007 | 10                    | 1.0                 |
| 11   | 2008 | 10                    | 1.0                 |
| 12   | 2009 | 10                    | 1.0                 |
| 13   | 2010 | 10                    | 1.0                 |
| 14   | 2011 | 10                    | 1.0                 |
| 15   | 2012 | 10                    | 1.0                 |
| 16   | 2013 | 10                    | 1.0                 |
| 17   | 2014 | 10                    | 1.0                 |
| 18   | 2015 | 10                    | 1.0                 |
| 19   | 2016 | 10                    | 1.0                 |
| 20   | 2017 | 10                    | 1.0                 |
| 21   | 2018 | 10                    | 1.0                 |
| 22   | 2019 | 10                    | 1.0                 |
| 23   | 2020 | 10                    | 1.0                 |
| 24   | 2021 | 10                    | 1.0                 |
| 25   | 2022 | 10                    | 1.0                 |
| 26   | 2023 | 10                    | 1.0                 |
| 27   | 2024 | 10                    | 1.0                 |
| 28   | 2025 | 10                    | 1.0                 |
| 29   | 2026 | 10                    | 1.0                 |
| 30   | 2027 | 10                    | 1.0                 |
| 31   | 2028 | 10                    | 1.0                 |
| 32   | 2029 | 10                    | 1.0                 |
| 33   | 2030 | 10                    | 1.0                 |
| 34   | 2031 | 10                    | 1.0                 |
| 35   | 2032 | 10                    | 1.0                 |
| 36   | 2033 | 10                    | 1.0                 |
| 37   | 2034 | 10                    | 1.0                 |
| 38   | 2035 | 10                    | 1.0                 |
| 39   | 2036 | 10                    | 1.0                 |
| 40   | 2037 | 10                    | 1.0                 |
| 41   | 2038 | 10                    | 1.0                 |
| 42   | 2039 | 10                    | 1.0                 |
| 43   | 2040 | 10                    | 1.0                 |
| 44   | 2041 | 10                    | 1.0                 |
| 45   | 2042 | 10                    | 1.0                 |
| 46   | 2043 | 10                    | 1.0                 |
| 47   | 2044 | 10                    | 1.0                 |
| 48   | 2045 | 10                    | 1.0                 |
| 49   | 2046 | 10                    | 1.0                 |
| 50   | 2047 | 10                    | 1.0                 |
| 51   | 2048 | 10                    | 1.0                 |
| 52   | 2049 | 10                    | 1.0                 |
| 53   | 2050 | 10                    | 1.0                 |
| 54   | 2051 | 10                    | 1.0                 |
| 55   | 2052 | 10                    | 1.0                 |
| 56   | 2053 | 10                    | 1.0                 |
| 57   | 2054 | 10                    | 1.0                 |
| 58   | 2055 | 10                    | 1.0                 |
| 59   | 2056 | 10                    | 1.0                 |
| 60   | 2057 | 10                    | 1.0                 |
| 61   | 2058 | 10                    | 1.0                 |
| 62   | 2059 | 10                    | 1.0                 |
| 63   | 2060 | 10                    | 1.0                 |
| 64   | 2061 | 10                    | 1.0                 |
| 65   | 2062 | 10                    | 1.0                 |
| 66   | 2063 | 10                    | 1.0                 |
| 67   | 2064 | 10                    | 1.0                 |
| 68   | 2065 | 10                    | 1.0                 |
| 69   | 2066 | 10                    | 1.0                 |
| 70   | 2067 | 10                    | 1.0                 |
| 71   | 2068 | 10                    | 1.0                 |
| 72   | 2069 | 10                    | 1.0                 |
| 73   | 2070 | 10                    | 1.0                 |
| 74   | 2071 | 10                    | 1.0                 |
| 75   | 2072 | 10                    | 1.0                 |
| 76   | 2073 | 10                    | 1.0                 |
| 77   | 2074 | 10                    | 1.0                 |
| 78   | 2075 | 10                    | 1.0                 |
| 79   | 2076 | 10                    | 1.0                 |
| 80   | 2077 | 10                    | 1.0                 |
| 81   | 2078 | 10                    | 1.0                 |
| 82   | 2079 | 10                    | 1.0                 |
| 83   | 2080 | 10                    | 1.0                 |
| 84   | 2081 | 10                    | 1.0                 |
| 85   | 2082 | 10                    | 1.0                 |
| 86   | 2083 | 10                    | 1.0                 |
| 87   | 2084 | 10                    | 1.0                 |
| 88   | 2085 | 10                    | 1.0                 |
| 89   | 2086 | 10                    | 1.0                 |
| 90   | 2087 | 10                    | 1.0                 |
| 91   | 2088 | 10                    | 1.0                 |
| 92   | 2089 | 10                    | 1.0                 |
| 93   | 2090 | 10                    | 1.0                 |
| 94   | 2091 | 10                    | 1.0                 |
| 95   | 2092 | 10                    | 1.0                 |
| 96   | 2093 | 10                    | 1.0                 |

[illegible]

| Sociodemografické údaje, typ a výška výstavby |                            |              |
|---|----------------------------|--------------|
| Typ výstavby                                  | Podstavba                  | Průměr výška |
| 1   | rodinné domy s podkrovní   | 1,48         |
| 2   | rodinné domy s podkrovní a | 1,51         |
| 3   | rodinné domy s podkrovní a | 1,52         |
| 4   | rodinné domy s podkrovní a | 1,53         |
| 5   | rodinné domy s podkrovní a | 1,54         |
| 6   | rodinné domy s podkrovní a | 1,55         |
| 7   | rodinné domy s podkrovní a | 1,56         |
| 8   | rodinné domy s podkrovní a | 1,57         |
| 9   | rodinné domy s podkrovní a | 1,58         |
| 10  | rodinné domy s podkrovní a | 1,59         |
| 11  | rodinné domy s podkrovní a | 1,60         |
| 12  | rodinné domy s podkrovní a | 1,61         |
| 13  | rodinné domy s podkrovní a | 1,62         |
| 14  | rodinné domy s podkrovní a | 1,63         |
| 15  | rodinné domy s podkrovní a | 1,64         |
| 16  | rodinné domy s podkrovní a | 1,65         |
| 17  | rodinné domy s podkrovní a | 1,66         |
| 18  | rodinné domy s podkrovní a | 1,67         |
| 19  | rodinné domy s podkrovní a | 1,68         |
| 20  | rodinné domy s podkrovní a | 1,69         |
| 21  | rodinné domy s podkrovní a | 1,70         |
| 22  | rodinné domy s podkrovní a | 1,71         |
| 23  | rodinné domy s podkrovní a | 1,72         |
| 24  | rodinné domy s podkrovní a | 1,73         |
| 25  | rodinné domy s podkrovní a | 1,74         |
| 26  | rodinné domy s podkrovní a | 1,75         |
| 27  | rodinné domy s podkrovní a | 1,76         |
| 28  | rodinné domy s podkrovní a | 1,77         |
| 29  | rodinné domy s podkrovní a | 1,78         |
| 30  | rodinné domy s podkrovní a | 1,79         |
| 31  | rodinné domy s podkrovní a | 1,80         |
| 32  | rodinné domy s podkrovní a | 1,81         |
| 33  | rodinné domy s podkrovní a | 1,82         |
| 34  | rodinné domy s podkrovní a | 1,83         |
| 35  | rodinné domy s podkrovní a | 1,84         |
| 36  | rodinné domy s podkrovní a | 1,85         |
| 37  | rodinné domy s podkrovní a | 1,86         |
| 38  | rodinné domy s podkrovní a | 1,87         |
| 39  | rodinné domy s podkrovní a | 1,88         |
| 40  | rodinné domy s podkrovní a | 1,89         |
| 41  | rodinné domy s podkrovní a | 1,90         |
| 42  | rodinné domy s podkrovní a | 1,91         |
| 43  | rodinné domy s podkrovní a | 1,92         |
| 44  | rodinné domy s podkrovní a | 1,93         |
| 45  | rodinné domy s podkrovní a | 1,94         |
| 46  | rodinné domy s podkrovní a | 1,95         |
| 47  | rodinné domy s podkrovní a | 1,96         |
| 48  | rodinné domy s podkrovní a | 1,97         |
| 49  | rodinné domy s podkrovní a | 1,98         |
| 50  | rodinné domy s podkrovní a | 1,99         |
| 51  | rodinné domy s podkrovní a | 2,00         |
| 52  | rodinné domy s podkrovní a | 2,01         |
| 53  | rodinné domy s podkrovní a | 2,02         |
| 54  | rodinné domy s podkrovní a | 2,03         |
| 55  | rodinné domy s podkrovní a | 2,04         |
| 56  | rodinné domy s podkrovní a | 2,05         |
| 57  | rodinné domy s podkrovní a | 2,06         |
| 58  | rodinné domy s podkrovní a | 2,07         |
| 59  | rodinné domy s podkrovní a | 2,08         |
| 60  | rodinné domy s podkrovní a | 2,09         |
| 61  | rodinné domy s podkrovní a | 2,10         |
| 62  | rodinné domy s podkrovní a | 2,11         |
| 63  | rodinné domy s podkrovní a | 2,12         |
| 64  | rodinné domy s podkrovní a | 2,13         |
| 65  | rodinné domy s podkrovní a | 2,14         |
| 66  | rodinné domy s podkrovní a | 2,15         |
| 67  | rodinné domy s podkrovní a | 2,16         |
| 68  | rodinné domy s podkrovní a | 2,17         |
| 69  | rodinné domy s podkrovní a | 2,18         |
| 70  | rodinné domy s podkrovní a | 2,19         |
| 71  | rodinné domy s podkrovní a | 2,20         |
| 72  | rodinné domy s podkrovní a | 2,21         |
| 73  | rodinné domy s podkrovní a | 2,22         |
| 74  | rodinné domy s podkrovní a | 2,23         |
| 75  | rodinné domy s podkrovní a | 2,24         |
| 76  | rodinné domy s podkrovní a | 2,25         |
| 77  | rodinné domy s podkrovní a | 2,26         |
| 78  | rodinné domy s podkrovní a | 2,27         |
| 79  | rodinné domy s podkrovní a | 2,28         |
| 80  | rodinné domy s podkrovní a | 2,29         |
| 81  | rodinné domy s podkrovní a | 2,30         |
| 82  | rodinné domy s podkrovní a | 2,31         |
| 83  | rodinné domy s podkrovní a | 2,32         |
| 84  | rodinné domy s podkrovní a | 2,33         |
| 85  | rodinné domy s podkrovní a | 2,34         |
| 86  | rodinné domy s podkrovní a | 2,35         |
| 87  | rodinné domy s podkrovní a | 2,36         |
| 88  | rodinné domy s podkrovní a | 2,37         |
| 89  | rodinné domy s podkrovní a | 2,38         |
| 90  | rodinné domy s podkrovní a | 2,39         |
| 91  | rodinné domy s podkrovní a | 2,40         |
| 92  | rodinné domy s podkrovní a | 2,41         |
| 93  | rodinné domy s podkrovní a | 2,42         |
| 94  | rodinné domy s podkrovní a | 2,43         |
| 95  | rodinné domy s podkrovní a | 2,44         |
| 96  | rodinné domy s podkrovní a | 2,4          |

PLANS



PLANS

Архитектурный план с расстановкой мебели и оборудования



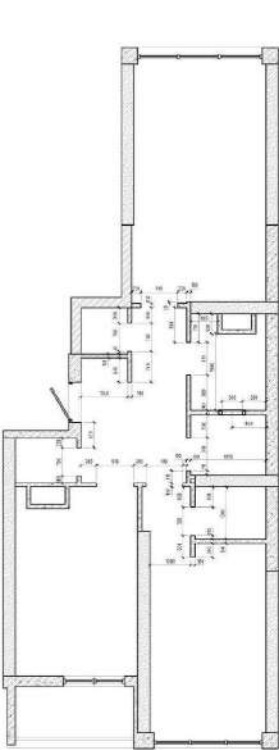
План привязки осветительных приборов



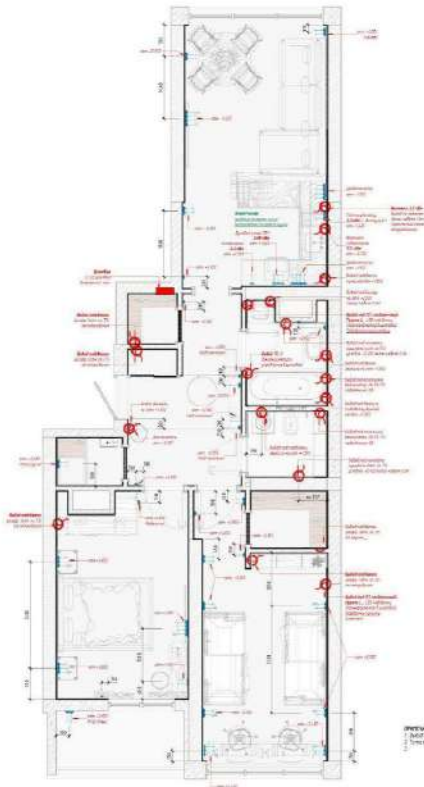
План половых покрытий



Кладочный (монтажный) план



План ЗОМ

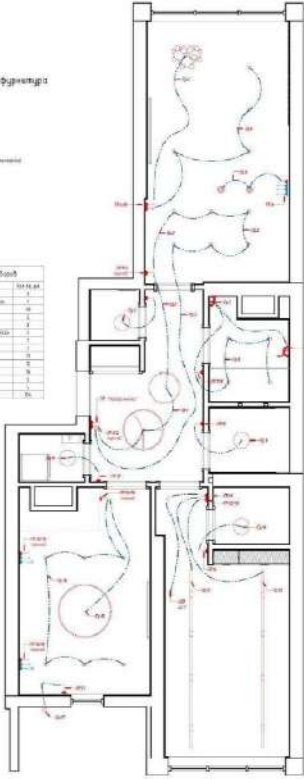


Условные обозначения. Электропроектирование

- В - Ввод
- В - Вывод
- П - Подключение
- Л - Линия
- Л - Линия
- Л - Линия

| Наименование | Единица измерения | Количество |
|--------------|-------------------|------------|
| Ввод         | шт.               | 1          |
| Вывод        | шт.               | 1          |
| Подключение  | шт.               | 1          |
| Линия        | шт.               | 1          |
| Линия        | шт.               | 1          |
| Линия        | шт.               | 1          |

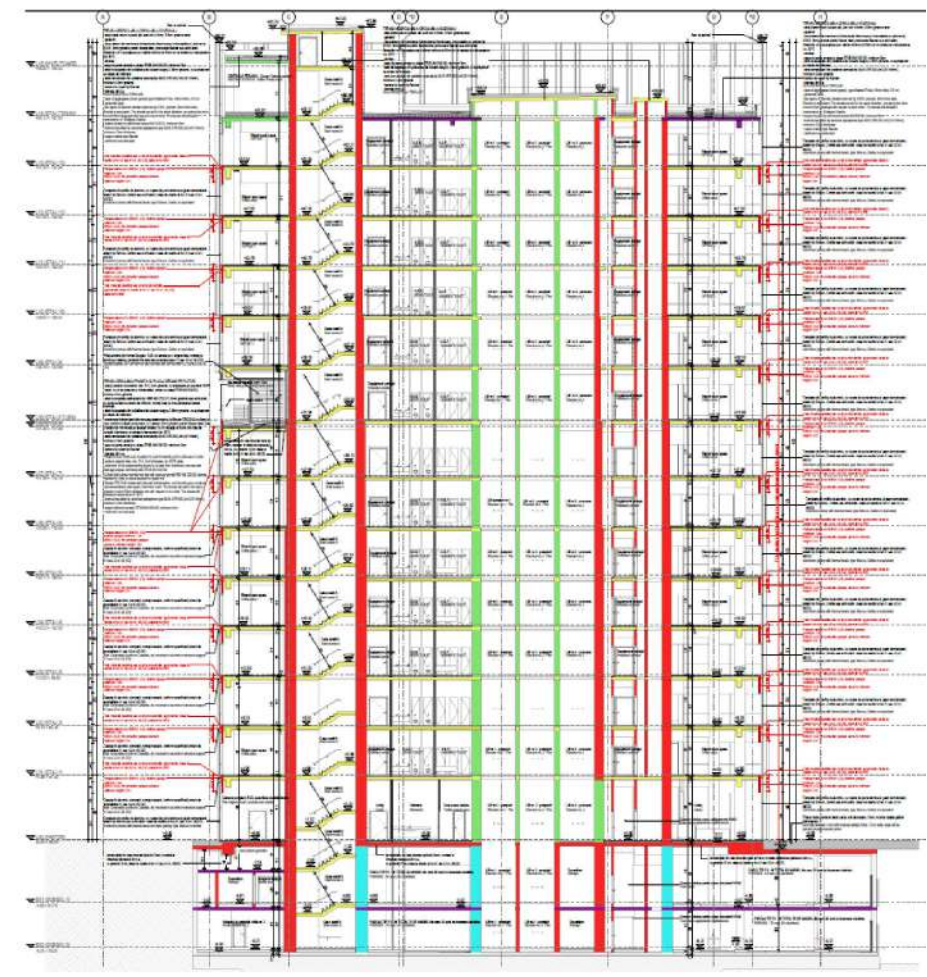
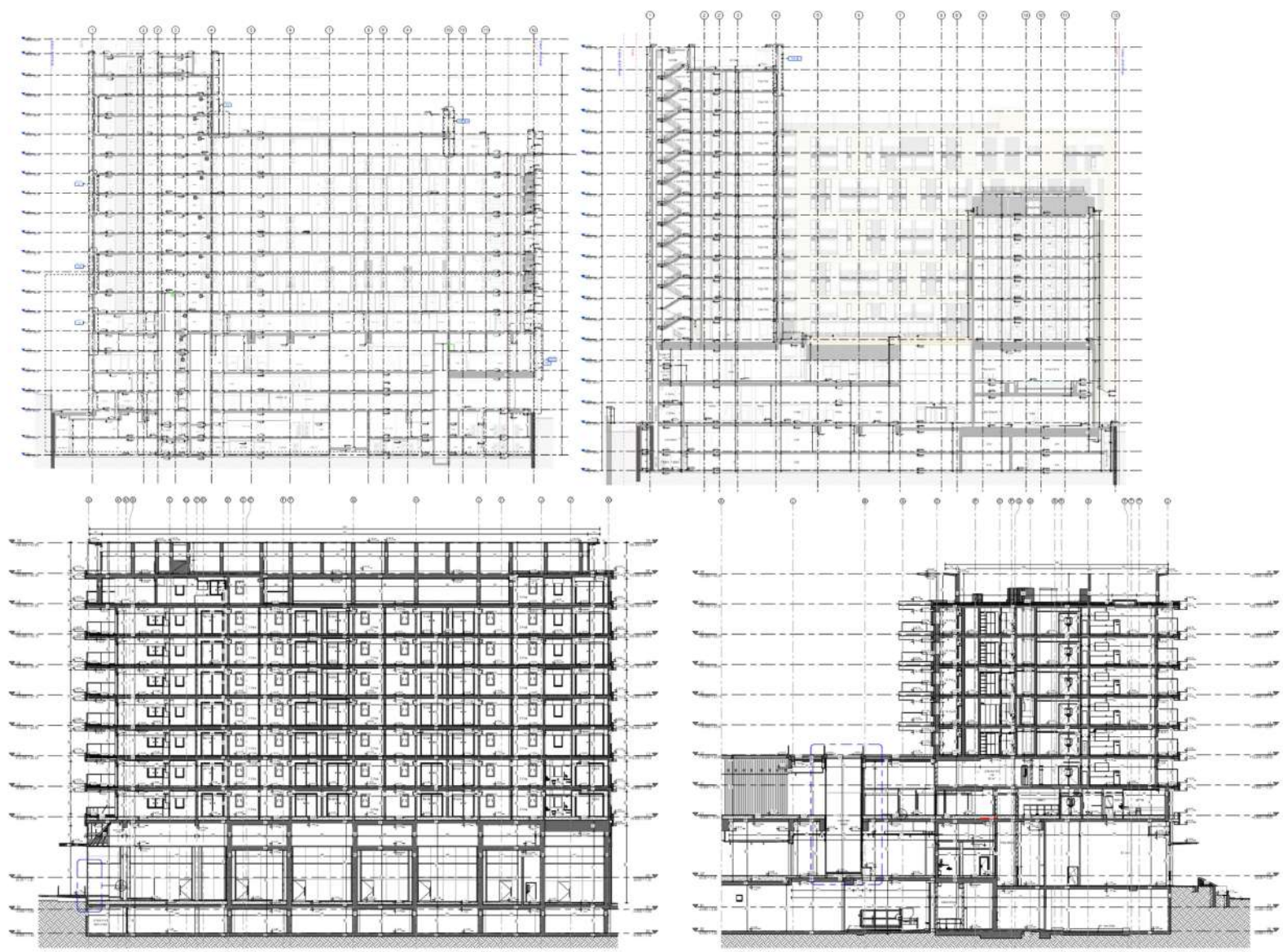
План выключателей по группам



# PLANS

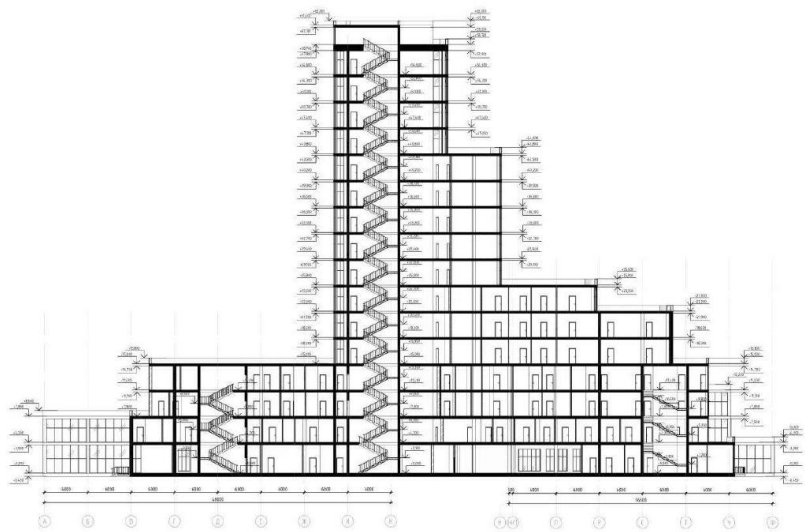


# SECTIONS

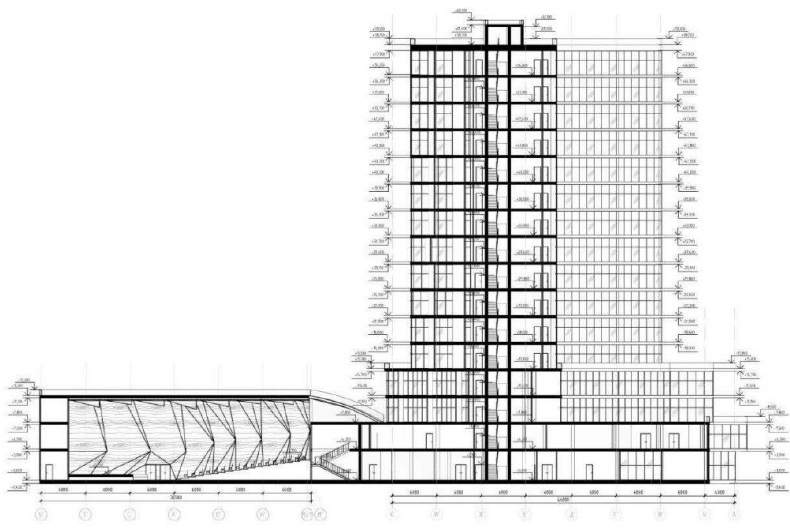


# SECTIONS

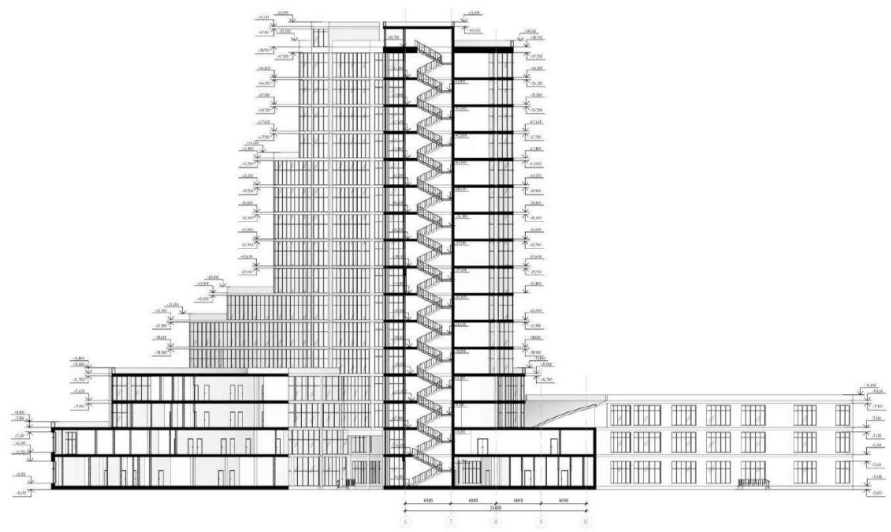
Pozio 2-2 (1:200)



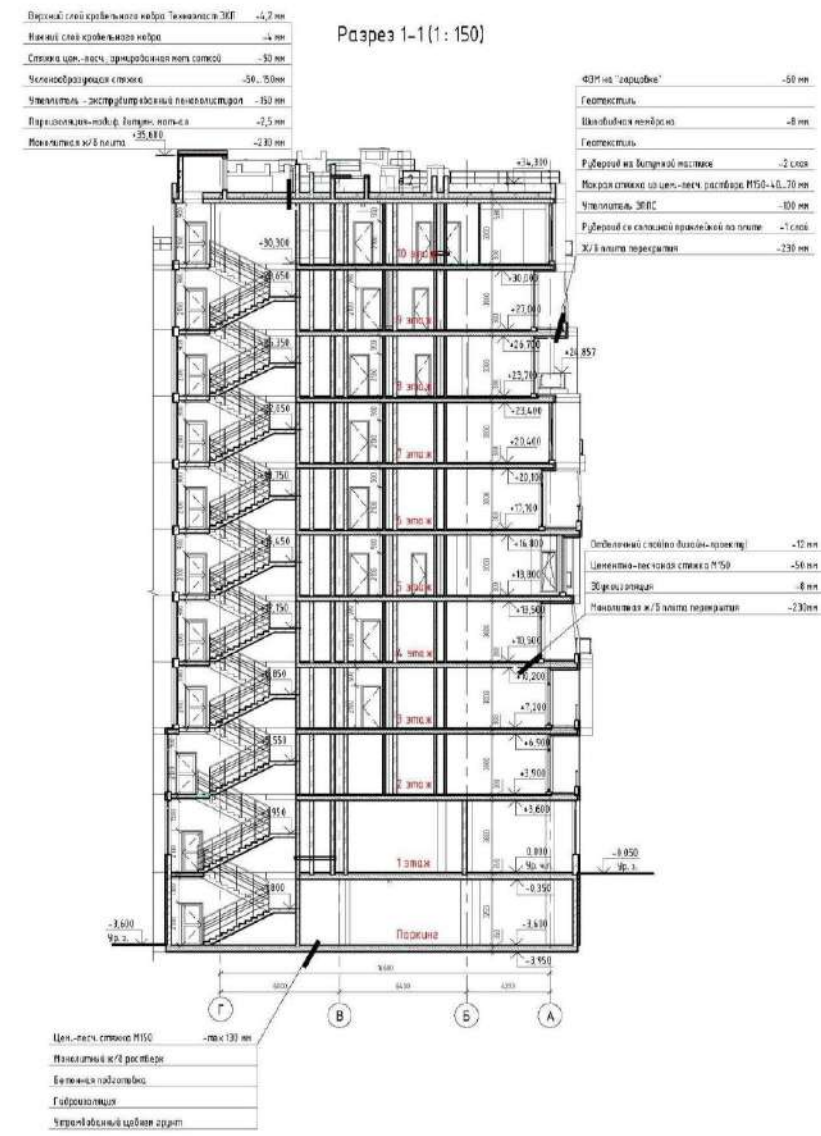
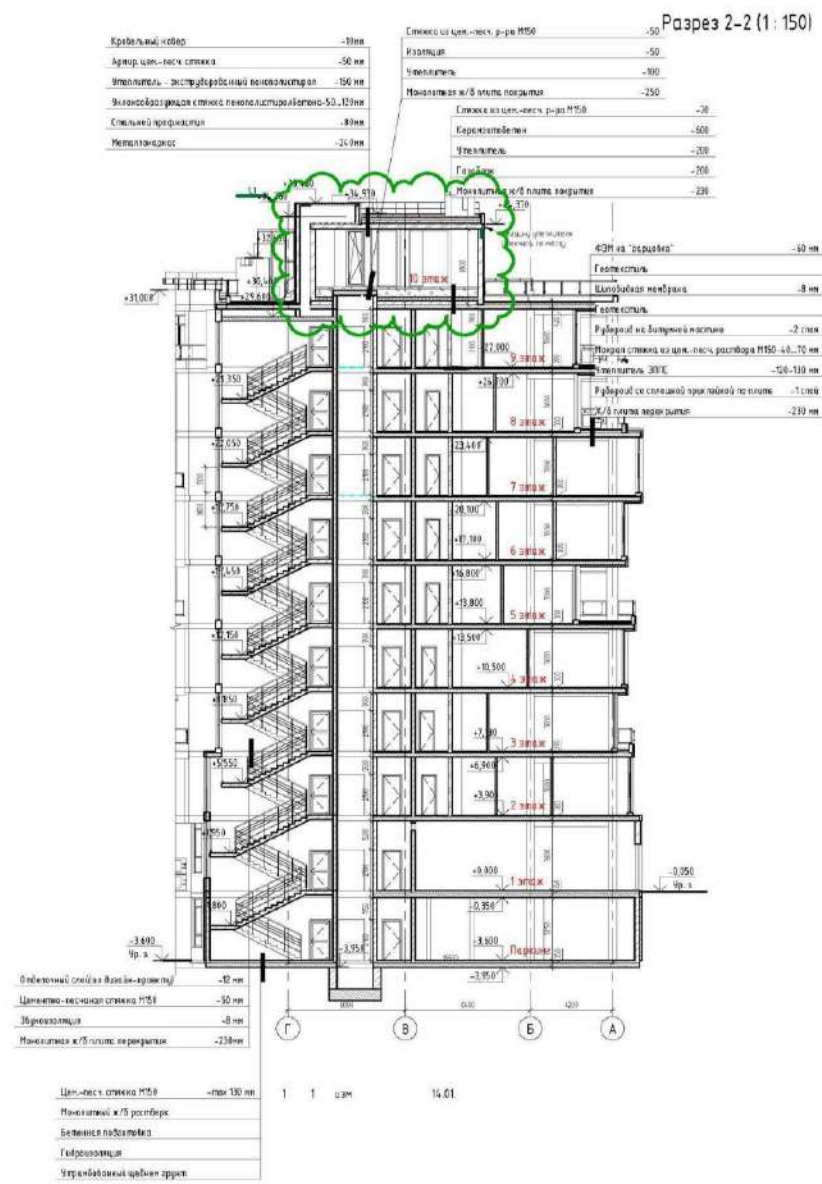
Pozio 1-1 (1:200)



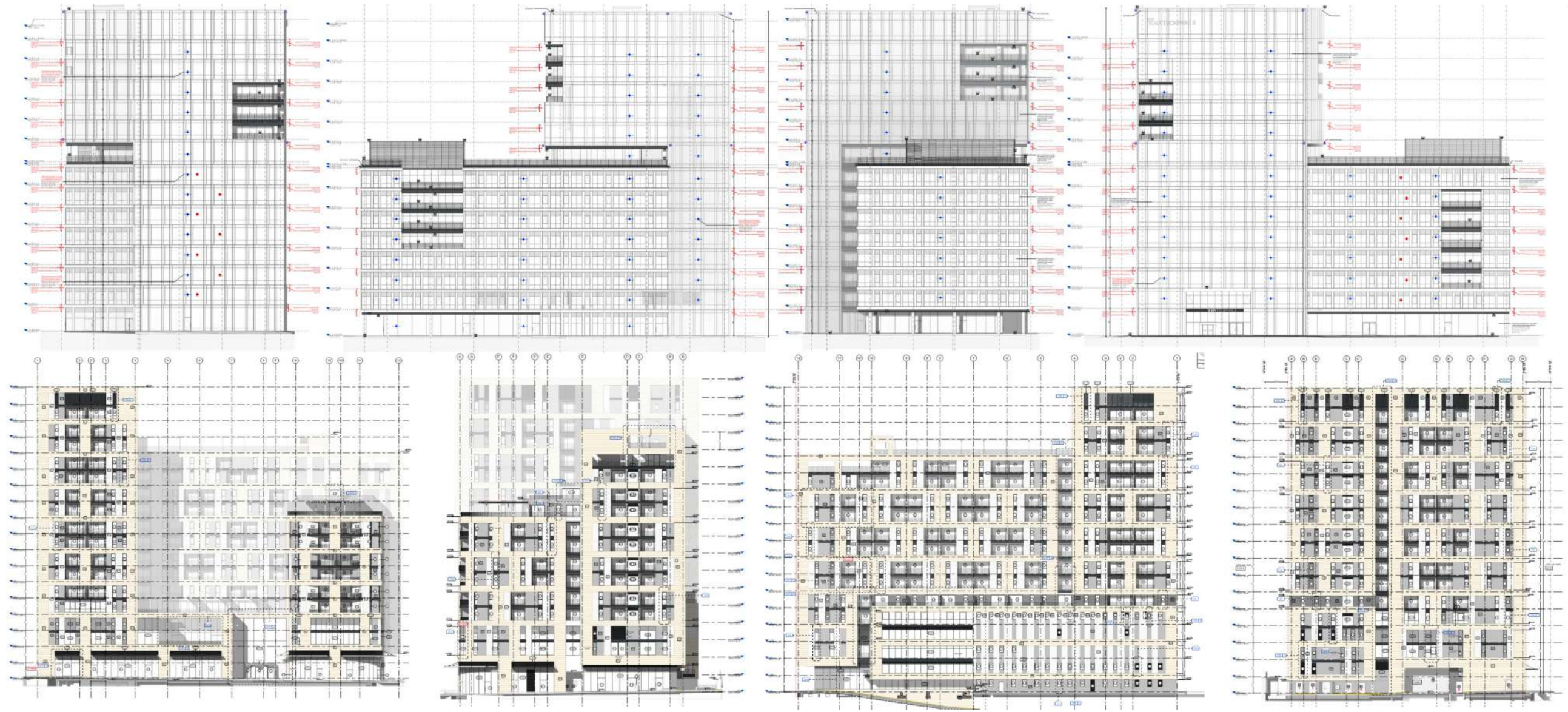
Pozio 3-3 (1:100)



# SECTIONS



# ELEVATIONS



# ELEVATIONS

Развертка фасада 1-13 (1:200)

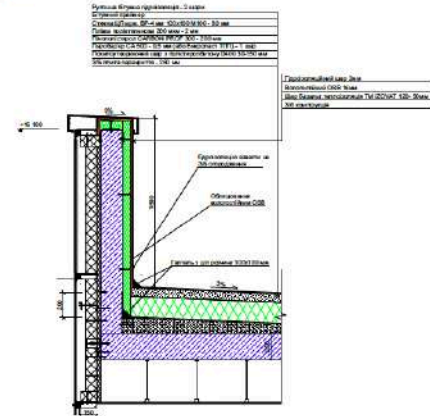


Развертка фасада 13-1 (1:200)

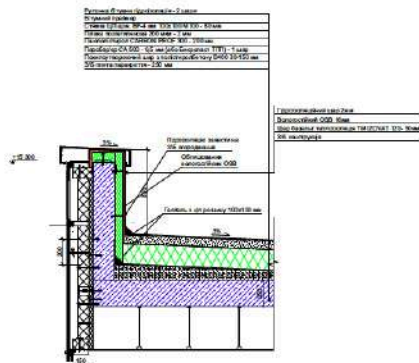


## DETAILS

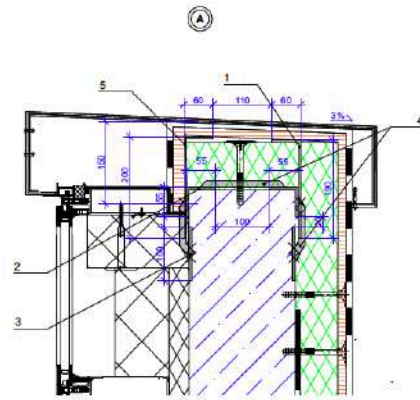
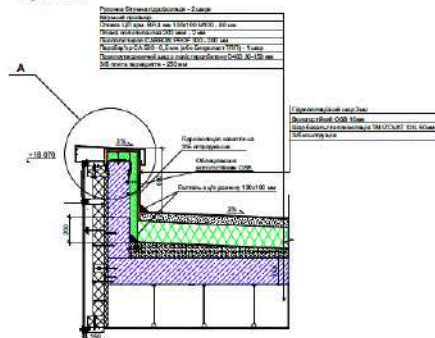
Взнос 1 1:25



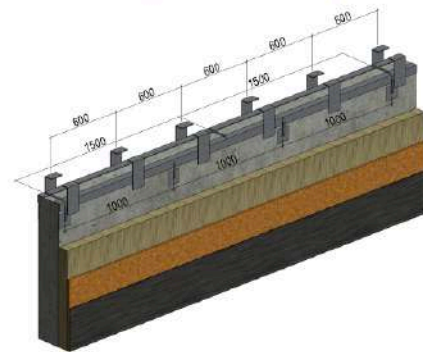
Вузол 2 1:25



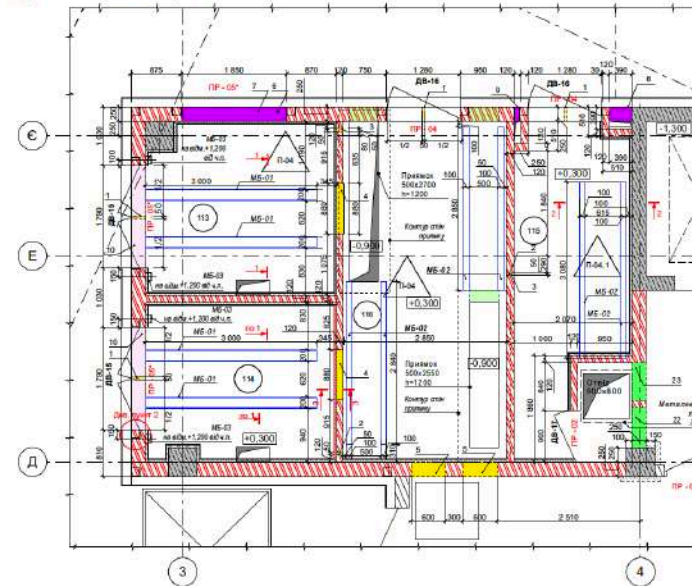
Выход 3 1:25



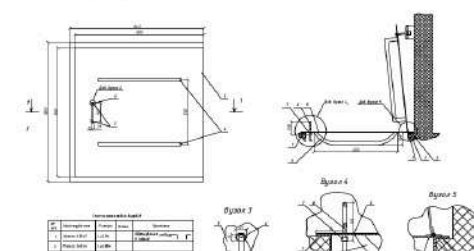
Типове розміщення ЗД та вугнів по всьому периметру покрівлі



Фрагмент плану 01. Влаштування ТП



Металевий люк Л-1



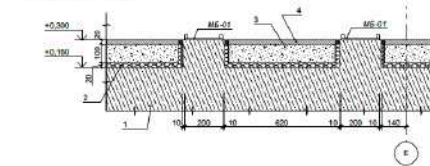
### Специфікація матеріалів до МБ-01

| Позиция | Наименование                                      | Единица | Примечание |
|---------|---|---------|------------|
| 1       | <input type="checkbox"/> 16x16                    |         |            |
| 2       | <input checked="" type="checkbox"/> Полоса 200x10 |         |            |
| 3       | <input checked="" type="checkbox"/> 18 А500С      | т=150   | шт         |

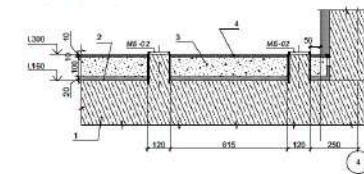
### Специфікація матеріалів до МБ-02

| Позиция | Наименование      | Ко-сть | Примеч. |
|---------|-------------------|--------|---------|
| 3       | Ø 16 AS09C 250 мм |        |         |
| 4       | — Палка Ø100      |        |         |

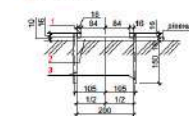
Перетин 1-1 1:15



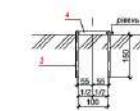
Перетин 2-2 1:15



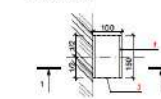
MB-01 1:10



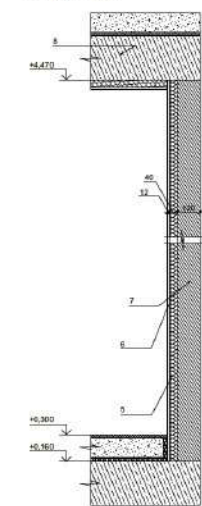
MB-02 1:10



MB-03 1:10



Перетин 3-3 1:15




Умовні позначення

1. Фундаментна з/б плита;
2. Звукоізоляційні плити - 20мм;
3. Армована стяжка не менше 80мм M100 (стіка Вр1 ф4, виском 100х100);
4. Ц.П. стяжка арм.сіткою Вр1 ф4мм 100х100 товщиною не менше 60мм;
5. Звукоізоляційна плита 40мм;
6. Лист гіпсокартонний 12,5 мм;
7. Цегла;
8. З/б плита перекриття;

Примітки:

1. Рішення по фасаді див. розділ
2. Рішення по стійкам у ТП буде видано окремо.

### Умовні позначення

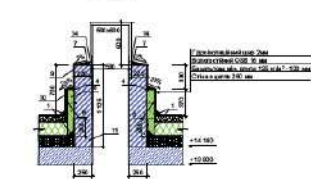
1. Кутки для кріплення по внутрішньому контуру 190х100х60 мм
2.  55 х 3 мм L- по всьому периметру паралелепіпеда
3. Закладна деталь 100х100х4 мм
4. Арматура 10мм А500С
5. Кутки для кріплення по зовнішньому контуру 200х100х60 мм

Примітки:

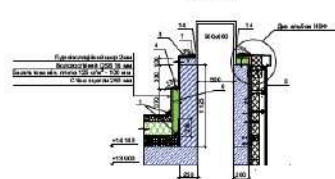
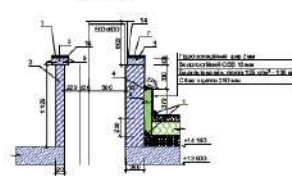
1. Вузли НВФ показано умовно
2. OSB на металеві кутики кріпiti за допомогою саморізів
3. Всі металеві елементи приварюються один до одного за допомогою зварки

## DETAILS

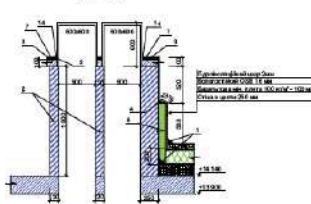
Page 1-1



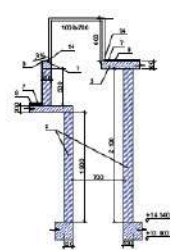
**People 2-2**

**Figure 3-3**

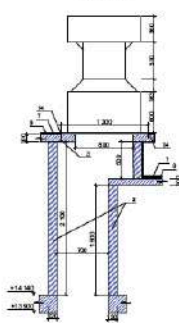
Page 4-4



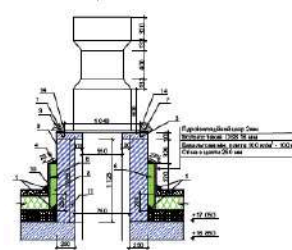
Principio 5-5



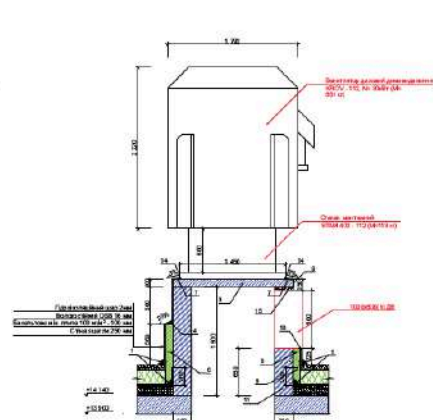
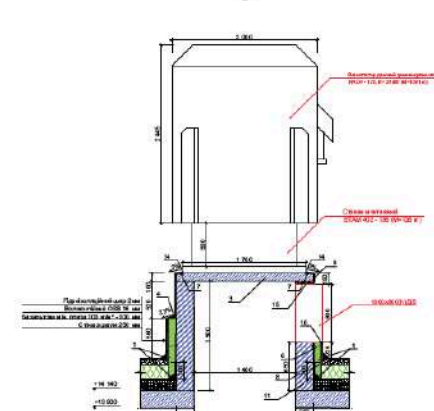
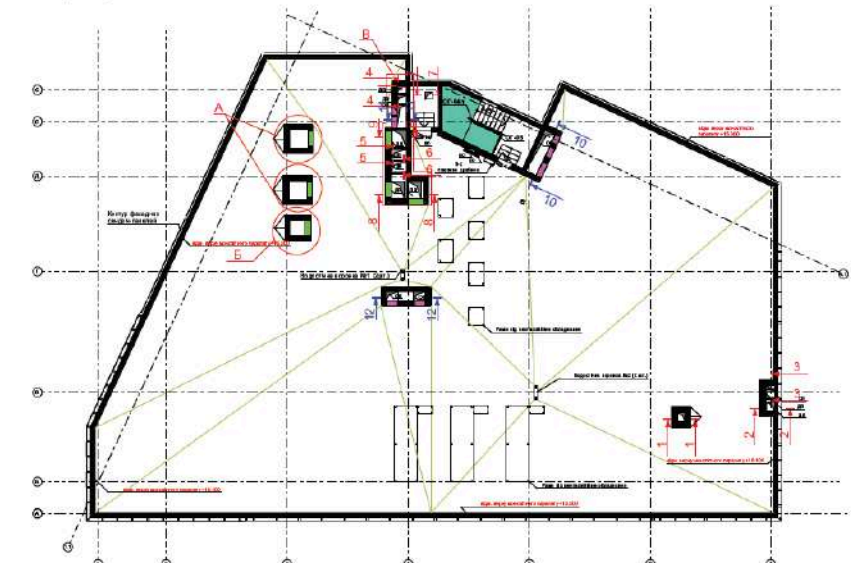
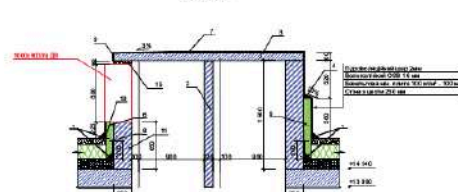
Pospis 6-6



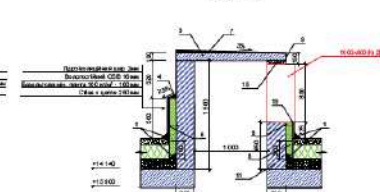
**Propia 7-7**



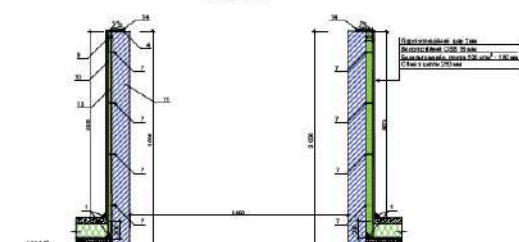
Схематизированное изображение

**Propis 8-8**

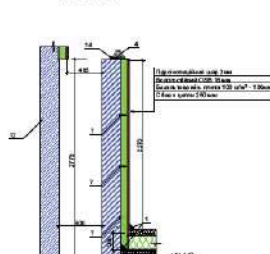
### Points 9.



Page 10-10



Pospisil 11-11



Poznań 12-12

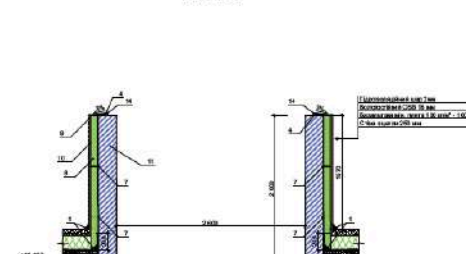
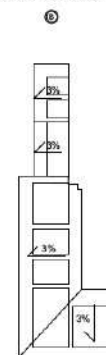


Схема похиту бетонної плити 100 мм.



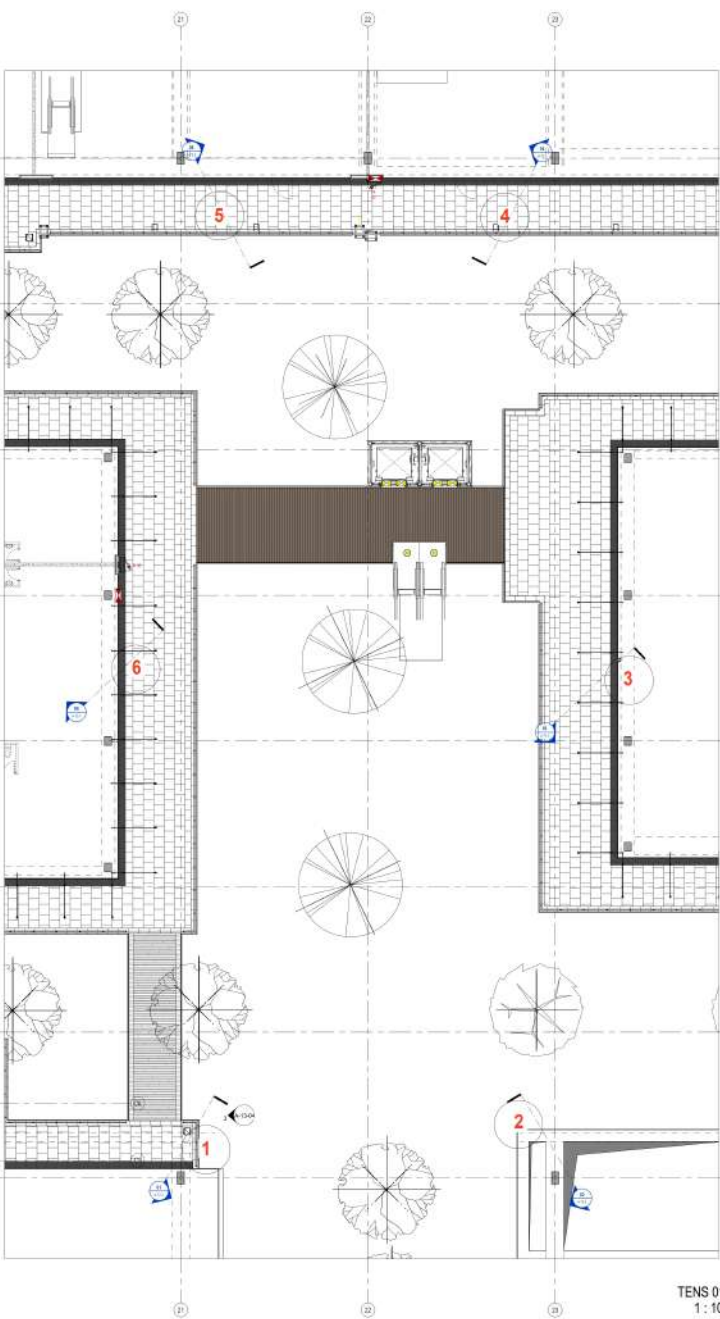
Умножи на 1031252003

1. Габарити в ЦП розчину 10х14х20 мм
2. Сила в центрі 120 мм
3. Інформація про ЦП привода гігієни 12 АССОС
4. Посилена внутрішня частина в ЦП розчину
5. 3/5 конструкція 200 мм
6. Тривалість роботи в розчині в акумуляторі
7. Сила в центрі розчину
8. Ультразвуковий ЕПСС 100 мм
9. Провідний кабель 2 м
10. Висловлення ОВВ 16 мм
11. Сила в центрі 250 мм
12. 3/5 конструкція 250 мм
13. Ультразвуковий ЕПСС 50 мм
14. IV Габарити
15. Значення змін, що виступають 90 мм

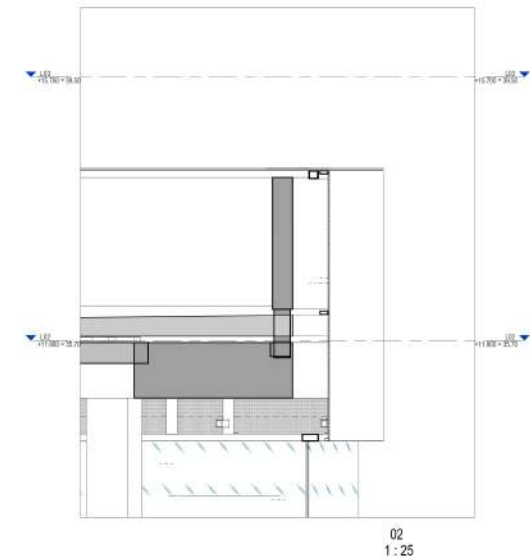
Il presidente

- [illegible]

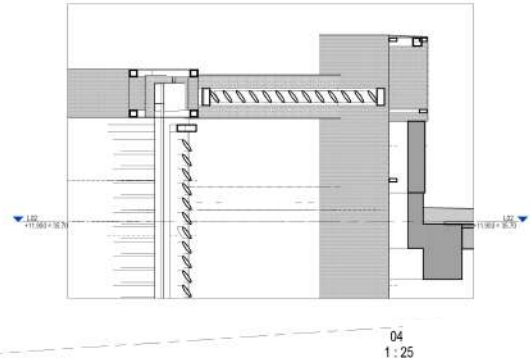
# DETAILS



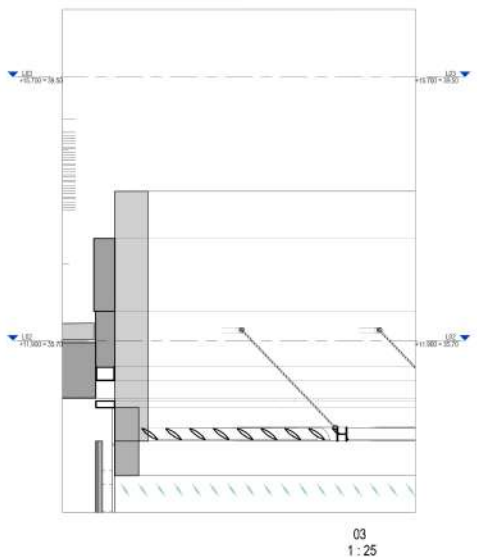
TENS 01  
1:100



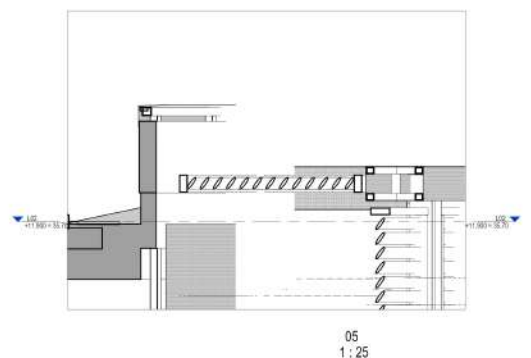
02  
1:25



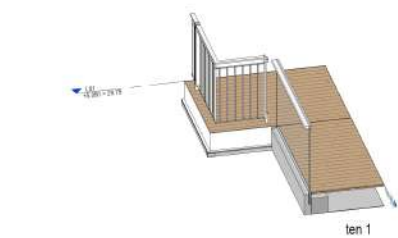
04  
1:25



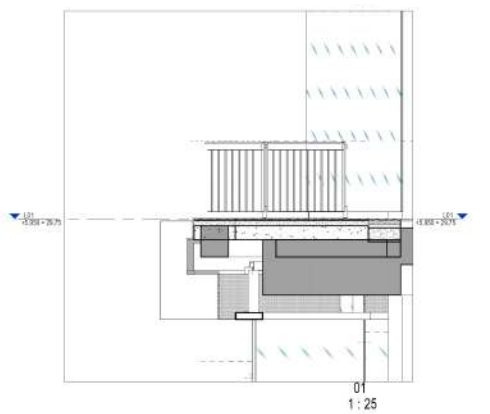
03  
1:25



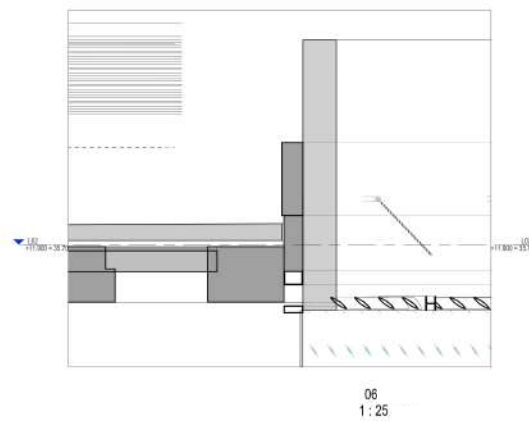
05  
1:25



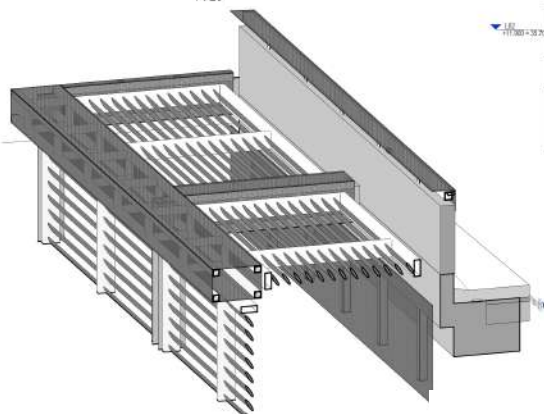
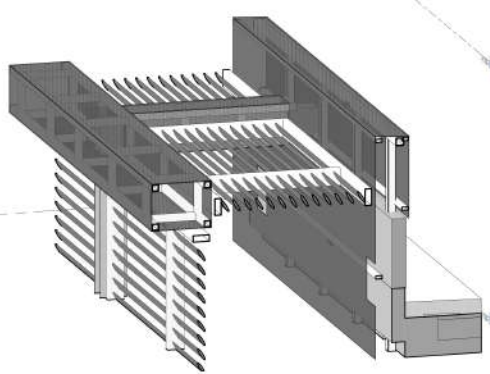
ten 1



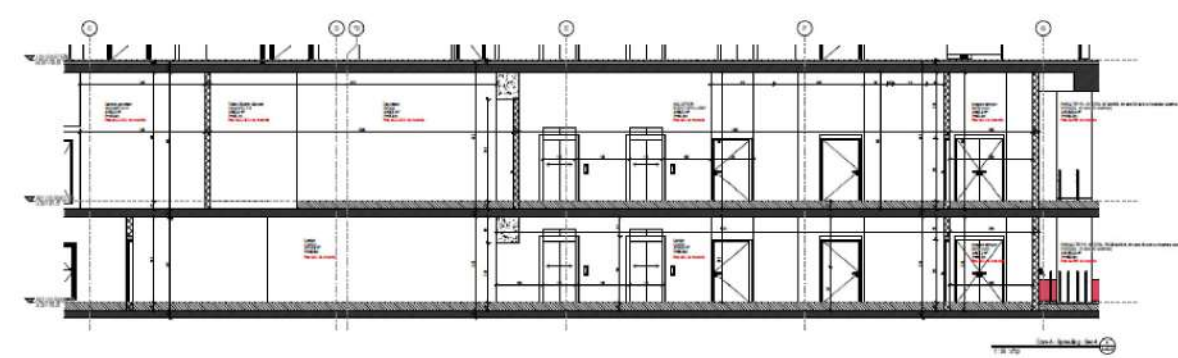
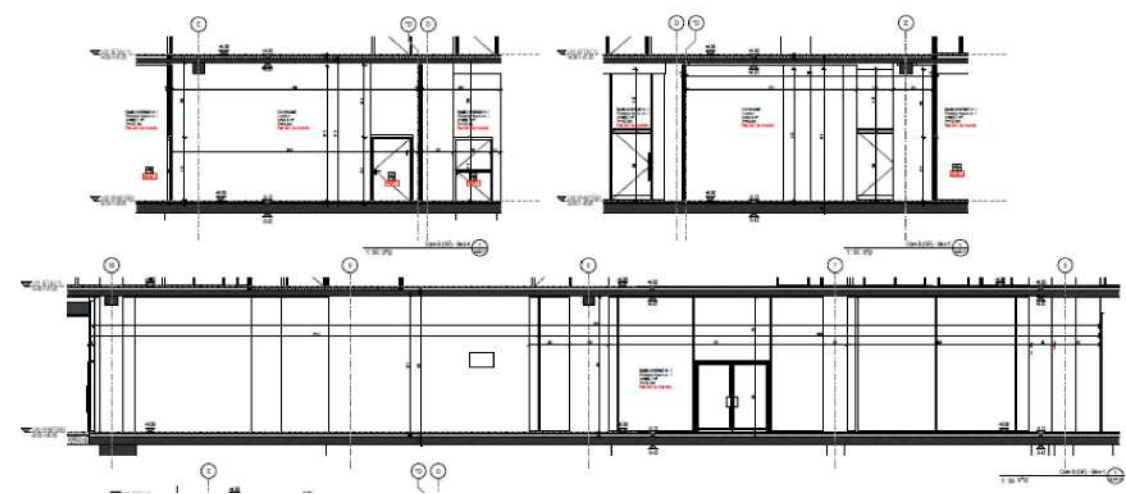
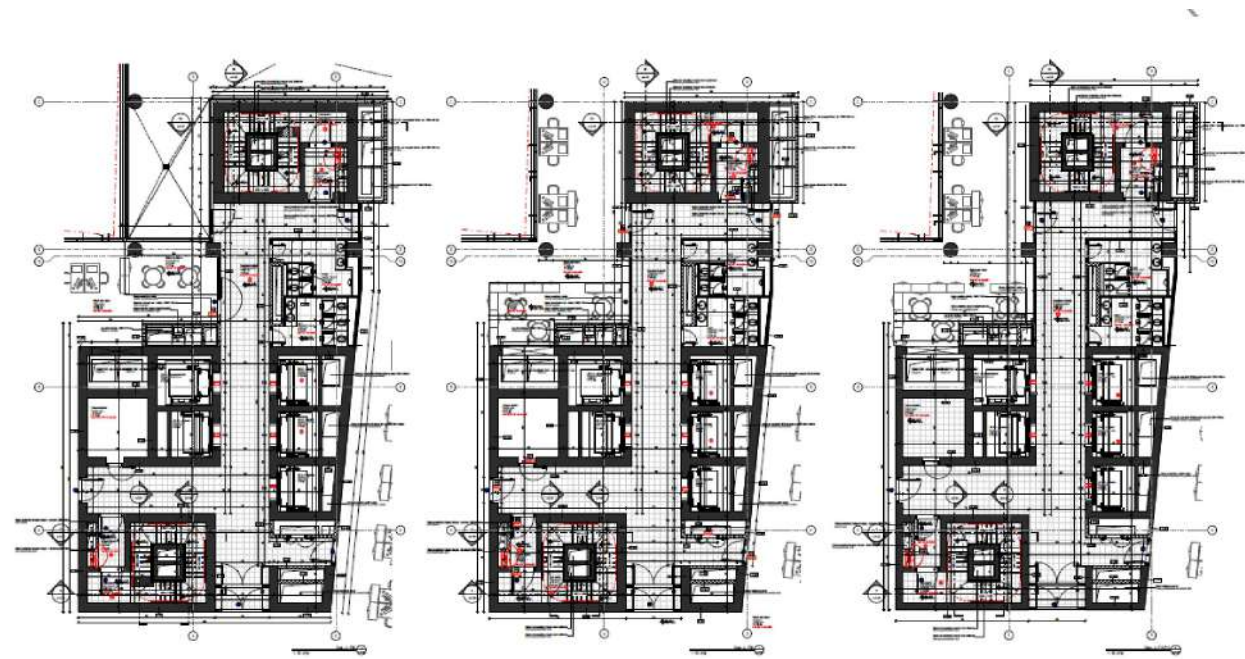
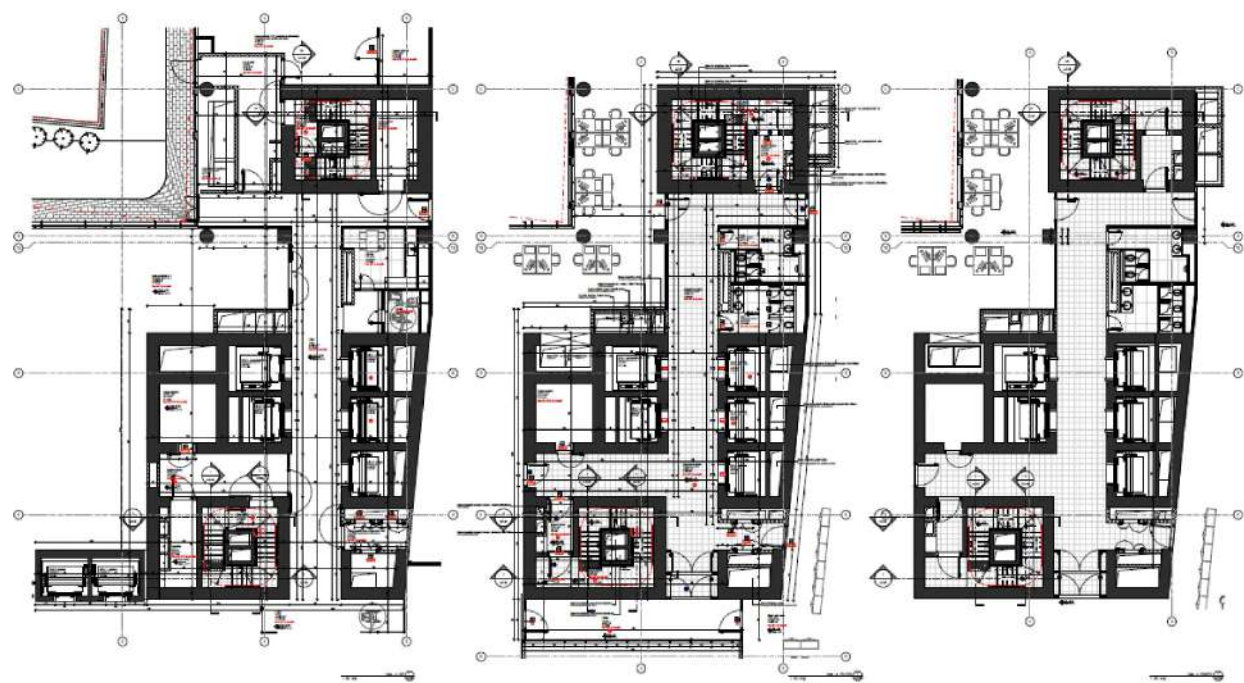
01  
1:25



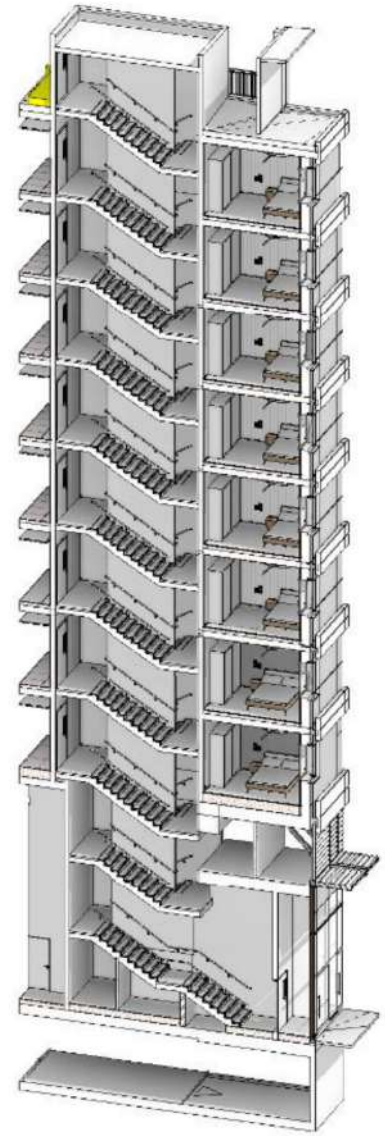
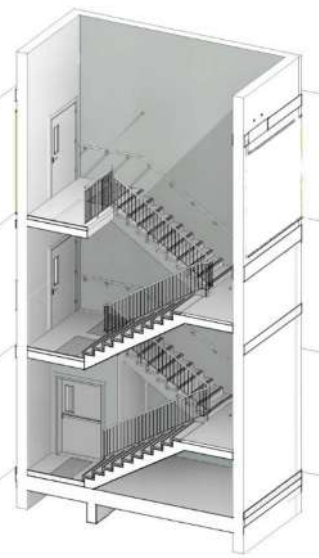
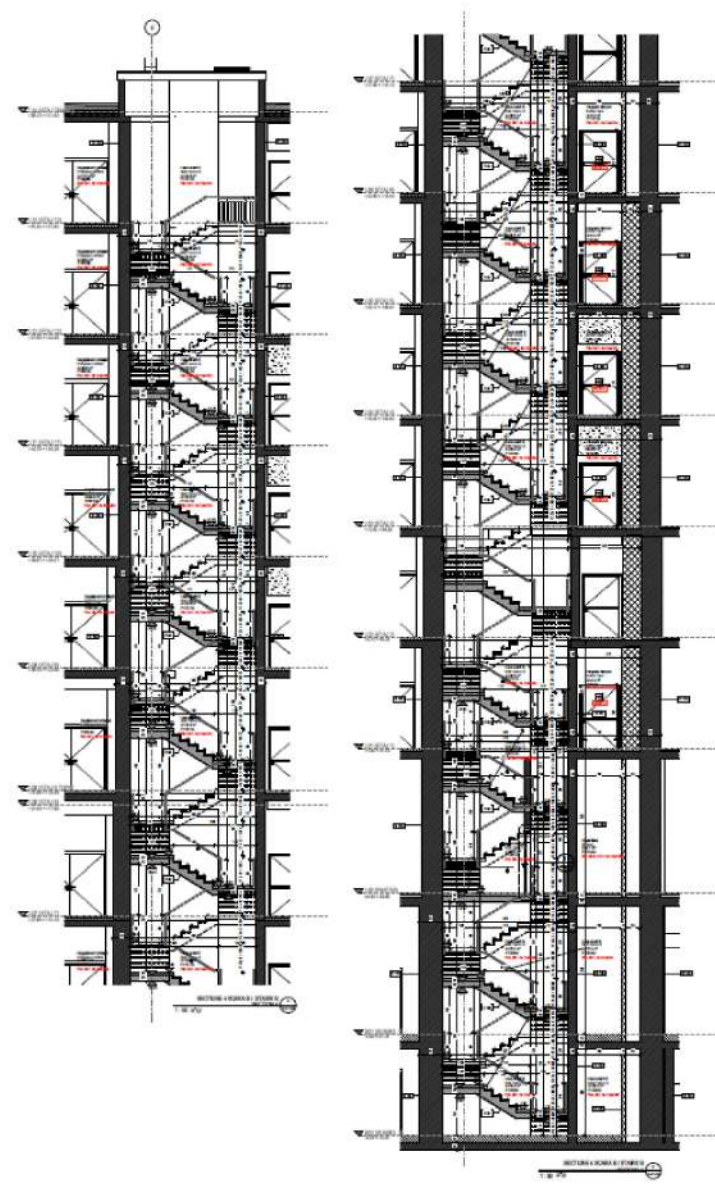
06  
1:25



# CORES



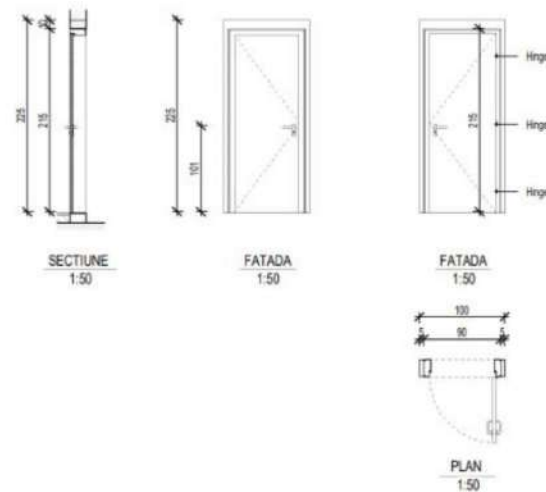
# STAIRS



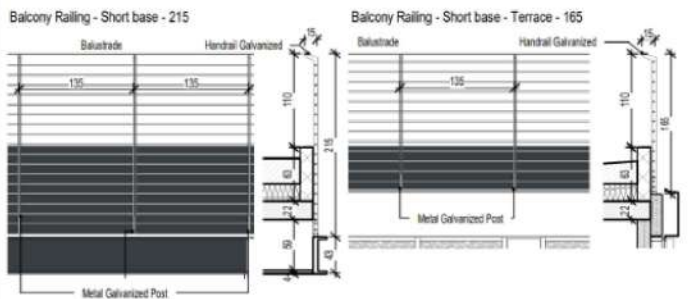
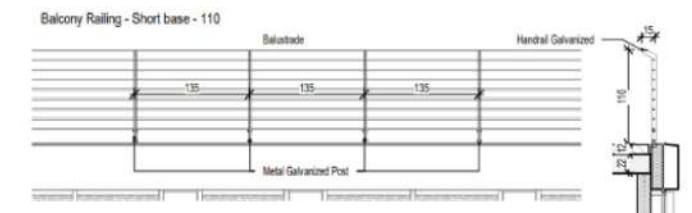
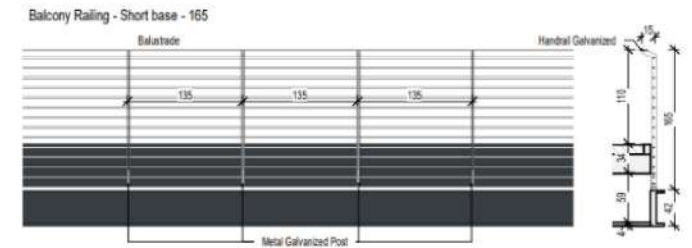
# METAL LIST

[illegible]

| Rating Sources |                  |          |         |       |              |         |
|----------------|------------------|----------|---------|-------|--------------|---------|
| TIME<br>BASE   | TYPE             | LOCATION | LENGTH  | COUNT | TIME<br>BASE | REMARKS |
| 14             | Area Survey, 100 | San Jose | 1:00:00 | 30    | 10           |         |
| 15             | Area Survey, 100 | San Jose | 1:00:00 | 30    | 10           |         |
| 16             | Area Survey, 100 | San Jose | 1:00:00 | 30    | 10           |         |
| 17             | Area Survey, 100 | San Jose | 1:00:00 | 30    | 10           |         |
| 18             | Area Survey, 100 | San Jose | 1:00:00 | 30    | 10           |         |
| 19             | Area Survey, 100 | San Jose | 1:00:00 | 30    | 10           |         |
| 20             | Area Survey, 100 | San Jose | 1:00:00 | 30    | 10           |         |
| 21             | Area Survey, 100 | San Jose | 1:00:00 | 30    | 10           |         |
| 22             | Area Survey, 100 | San Jose | 1:00:00 | 30    | 10           |         |
| 23             | Area Survey, 100 | San Jose | 1:00:00 | 30    | 10           |         |
| 24             | Area Survey, 100 | San Jose | 1:00:00 | 30    | 10           |         |
| 25             | Area Survey, 100 | San Jose | 1:00:00 | 30    | 10           |         |
| 26             | Area Survey, 100 | San Jose | 1:00:00 | 30    | 10           |         |
| 27             | Area Survey, 100 | San Jose | 1:00:00 | 30    | 10           |         |
| 28             | Area Survey, 100 | San Jose | 1:00:00 | 30    | 10           |         |
| 29             | Area Survey, 100 | San Jose | 1:00:00 | 30    | 10           |         |
| 30             | Area Survey, 100 | San Jose | 1:00:00 | 30    | 10           |         |
| 31             | Area Survey, 100 | San Jose | 1:00:00 | 30    | 10           |         |
| 32             | Area Survey, 100 | San Jose | 1:00:00 | 30    | 10           |         |
| 33             | Area Survey, 100 | San Jose | 1:00:00 | 30    | 10           |         |
| 34             | Area Survey, 100 | San Jose | 1:00:00 | 30    | 10           |         |
| 35             | Area Survey, 100 | San Jose | 1:00:00 | 30    | 10           |         |
| 36             | Area Survey, 100 | San Jose | 1:00:00 | 30    | 10           |         |
| 37             | Area Survey, 100 | San Jose | 1:00:00 | 30    | 10           |         |
| 38             | Area Survey, 100 | San Jose | 1:00:00 | 30    | 10           |         |
| 39             | Area Survey, 100 | San Jose | 1:00:00 | 30    | 10           |         |
| 40             | Area Survey, 100 | San Jose | 1:00:00 | 30    | 10           |         |
| 41             | Area Survey, 100 | San Jose | 1:00:00 | 30    | 10           |         |
| 42             | Area Survey, 100 | San Jose | 1:00:00 | 30    | 10           |         |
| 43             | Area Survey, 100 | San Jose | 1:00:00 | 30    | 10           |         |
| 44             | Area Survey, 100 | San Jose | 1:00:00 | 30    | 10           |         |
| 45             | Area Survey, 100 | San Jose | 1:00:00 | 30    | 10           |         |
| 46             | Area Survey, 100 | San Jose | 1:00:00 | 30    | 10           |         |
| 47             | Area Survey, 100 | San Jose | 1:00:00 | 30    | 10           |         |
| 48             | Area Survey, 100 | San Jose | 1:00:00 | 30    | 10           |         |
| 49             | Area Survey, 100 | San Jose | 1:00:00 | 30    | 10           |         |
| 50             | Area Survey, 100 | San Jose | 1:00:00 | 30    | 10           |         |
| 51             | Area Survey, 100 | San Jose | 1:00:00 | 30    | 10           |         |
| 52             | Area Survey, 100 | San Jose | 1:00:00 | 30    | 10           |         |
| 53             | Area Survey, 100 | San Jose | 1:00:00 | 30    | 10           |         |
| 54             | Area Survey, 100 | San Jose | 1:00:00 | 30    | 10           |         |
| 55             | Area Survey, 100 | San Jose | 1:00:00 | 30    | 10           |         |
| 56             | Area Survey, 100 | San Jose | 1:00:00 | 30    | 10           |         |
| 57             | Area Survey, 100 | San Jose | 1:00:00 | 30    | 10           |         |
| 58             | Area Survey, 100 | San Jose | 1:00:00 | 30    | 10           |         |
| 59             | Area Survey, 100 | San Jose | 1:00:00 | 30    | 10           |         |
| 60             | Area Survey, 100 | San Jose | 1:00:00 | 30    | 10           |         |
| 61             | Area Survey, 100 | San Jose | 1:00:00 | 30    | 10           |         |
| 62             | Area Survey, 100 | San Jose | 1:00:00 | 30    | 10           |         |
| 63             | Area Survey, 100 | San Jose | 1:00:00 | 30    | 10           |         |
| 64             | Area Survey, 100 | San Jose | 1:00:00 | 30    | 10           |         |
| 65             | Area Survey, 100 | San Jose | 1:00:00 | 30    | 10           |         |
| 66             | Area Survey, 100 | San Jose | 1:00:00 | 30    | 10           |         |
| 67             | Area Survey, 100 | San Jose | 1:00:00 | 30    | 10           |         |
| 68             | Area Survey, 100 | San Jose | 1:00:00 | 30    | 10           |         |
| 69             | Area Survey, 100 | San Jose | 1:00:00 | 30    | 10           |         |
| 70             | Area Survey, 100 | San Jose | 1:00:00 | 30    | 10           |         |
| 71             | Area Survey, 100 | San Jose | 1:00:00 | 30    | 10           |         |

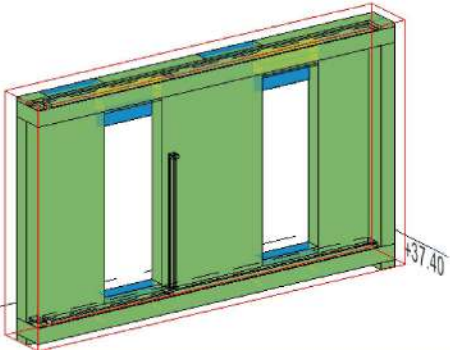
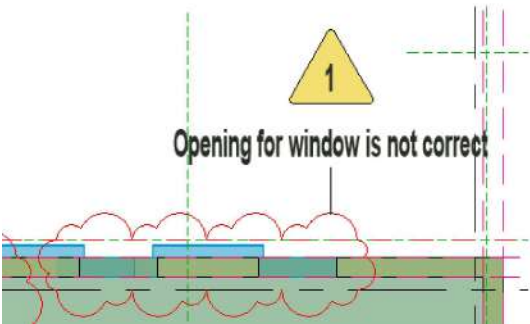
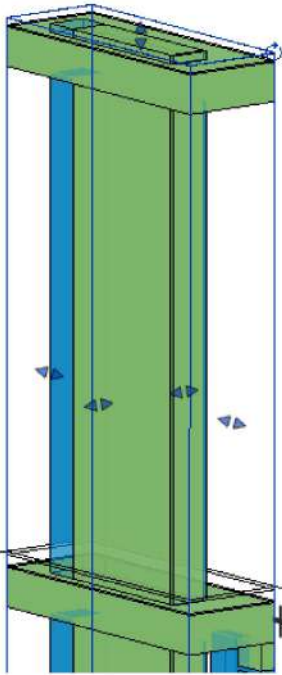
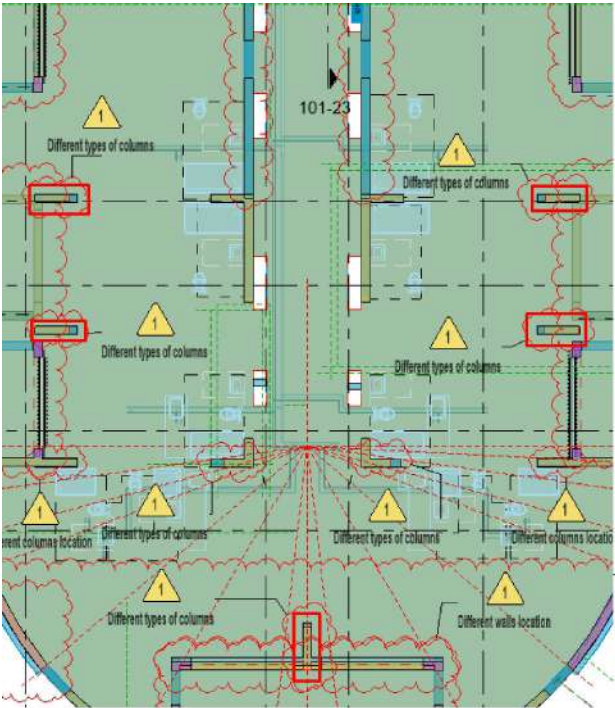
[illegible][illegible]

| NINZ-PROGET  |   |  | Frame thickness according to wall construction and finishes |       |                   |                      |
|--|---|--|---|-------|-------------------|----------------------|
| Description  | FR Classification   | UEI 90-C   | No. of Fixed Parts  |       | Opening Direction | Acc to arc plans     |
|  | No. of door leaves  |  | Door Material   | Steel | Door Finish       | (see Doors schedule) |
|  | Door Construction   | Steel  | Frame Material  | Steel | Frame Finish      | PTD RAL 9002         |
|  | Window  | (see Doors schedule)   |   |       |                   | (see Doors schedule) |
| Hardware   | Hinge   | 3 hinges: one per leaf with spring for the self-closing and one ball-bearing hinge with screws for the vertical adjustment |   |       |                   |                      |
|  | Handle  | Black safety handle with steel core, supplied with plates, cylinder bore and keyholes for patent keys                      |   |       |                   |                      |
|  | Lock  | Lock complete with cylinder bore and keyhole for patent keys   |   |       |                   |                      |
|  | Bolt  | Safety bolt in hinge-side leaf edge  |   |       |                   |                      |
|  | Panic bar   | -  |   |       |                   |                      |
|  | Door closer   | Hawke DCL-501 rack-operated over-head door closer with dual regulation   |   |       |                   |                      |
|  | Door selector device  |  |   |       |                   |                      |
| Galvanized steel-sheet door with high density insulating material core, without bottom frame, total thickness 54mm, with thick rebate, corner frame made of galvanized steel-sheet profile joint to the corners without welding, prepares for fastening on sub-frame, joint for in situ assembly and screw on bottom slacer, with thermal gasket on three sides. |   |  |   |       |                   |                      |
| General  | 1. Direction of opening to be according to architectural plans  |  |   |       |                   |                      |
|  | 2. Contractor must check, verify and assure compliance of clear width opening to be in accordance with the requirements indicated above.  |  |   |       |                   |                      |
|  | 3. Contractor must check and verify all dimensions of existing conditions prior to installation. In case of discrepancies contractor must notify the architect of any deviation from the plans and must submit cahrges for architects approval. |  |   |       |                   |                      |
|  | 4. Contractor must submit installation details for architects approval prior to installation  |  |   |       |                   |                      |
|  |   |  |   |       |                   |                      |

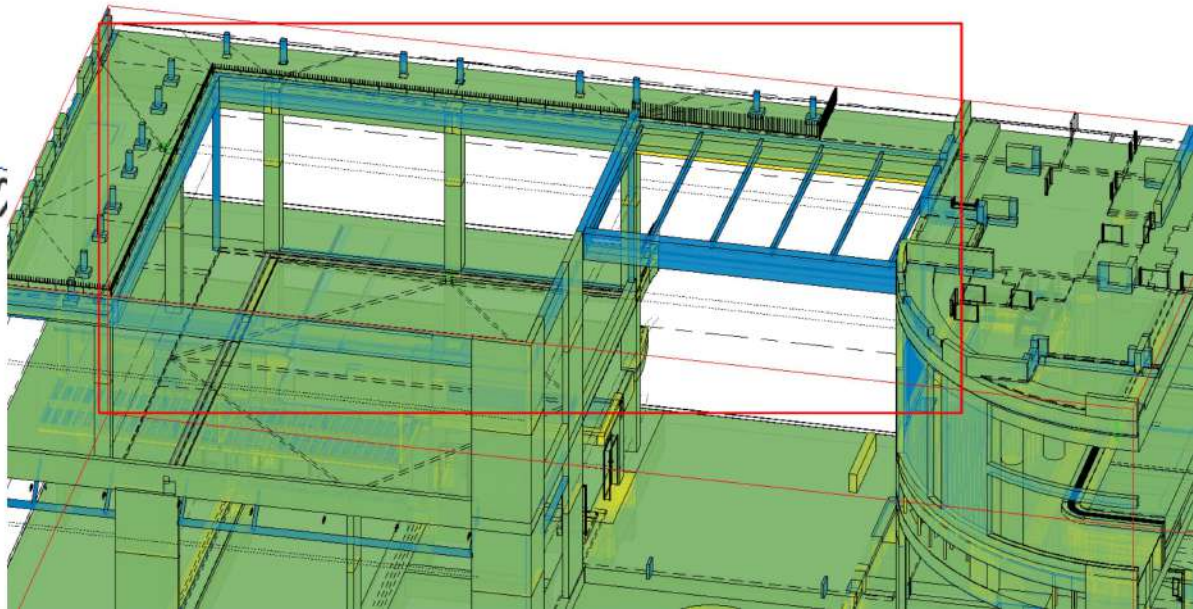


|                  |   |
|------------------|---|
| Description      | Balcony railing   |
| Comments         | Surface finish:<br>Galvanized and primer powder coated<br>Painted metal paint final colour by architect   |
| General Comments | <ol style="list-style-type: none"> <li>1. Direction of opening to be according to architectural plans.</li> <li>2. Contractor must check, verify and ensure compliance of clear width: opening to be in accordance with the requirements indicated above.</li> <li>3. Contractor must check and verify all dimensions of existing conditions prior to installation. In case of discrepancies contractor must notify the Architect of any deviations from the plans and must submit change for architect's approval</li> <li>4. Contractor must submit installation details for Architects approval prior to installation</li> </ol> |

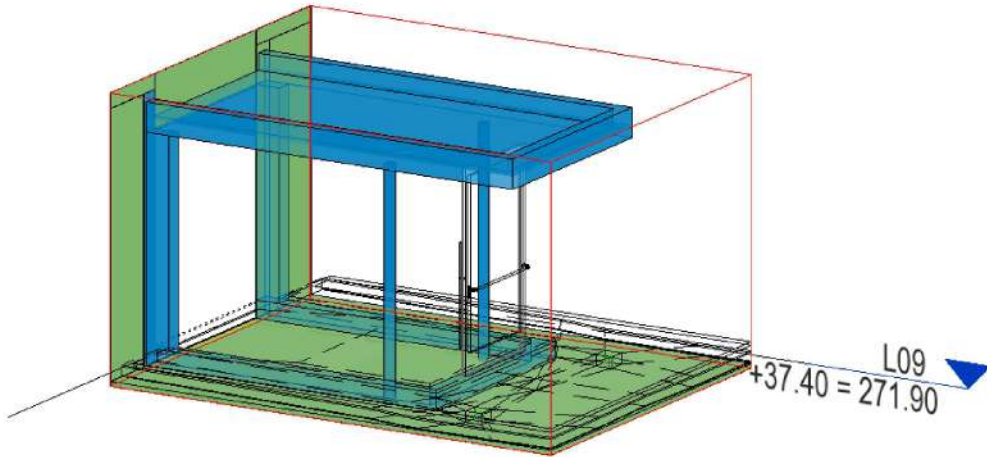
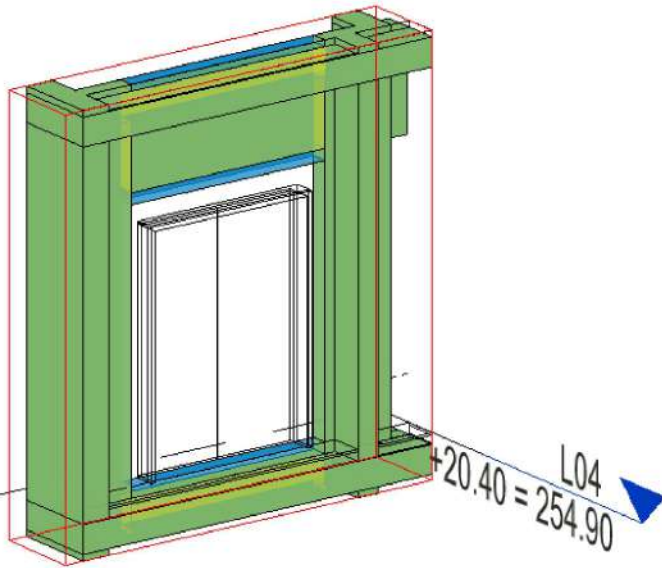
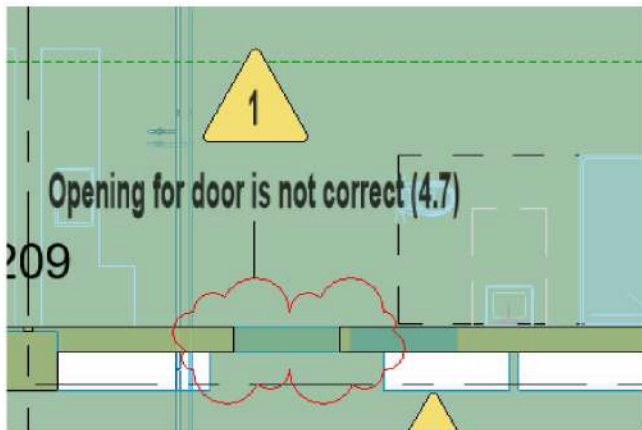
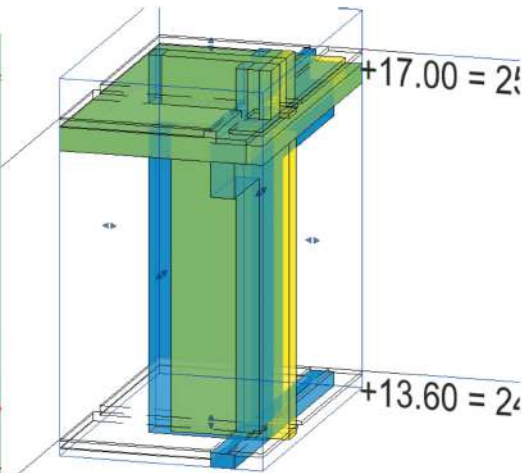
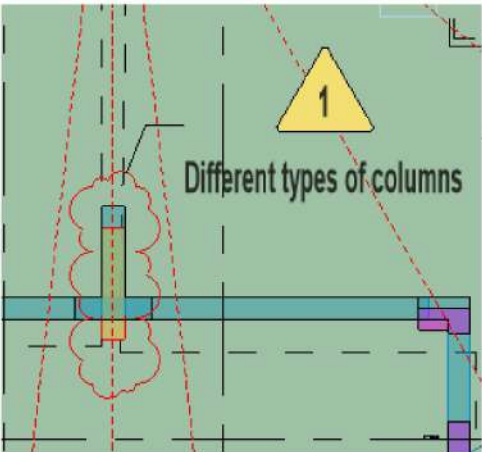
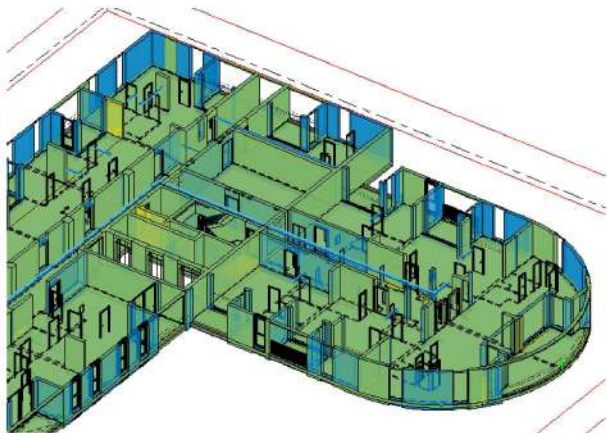
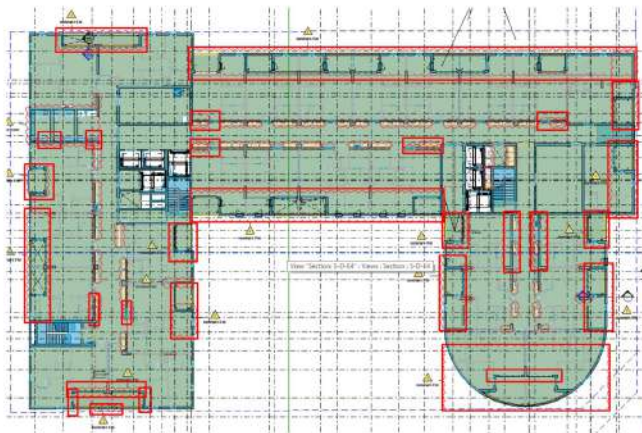
# COORDINATION



+27.20 = 2



# COORDINATION



# VISUALIZATION



# VISUALIZATION

