

VANIYA KHAN ARCHITECTURE PORTFOLIO
2024 SELECTED WORKS 

CONTENTS

1	CLOCKY HOME residential rendering	Spring 2023
2	FOUR CORNERS OF THE MEDITERRANEAN WORLD landscape architecture	Summer 2024
3	CATHEDRAL OF KELP structural integration	Winter & Spring 2022
4	SQUIGGLY WIGGLY adaptive reuse, user agency, & physical modeling	Winter 2024
5	HARMONIC STRINGS public art installation	Summer 2021
6	BONUS: AZADI thesis process work	Fall 2024-Present

1

CLOCKY HOME

This home was designed with the intent to cater towards one's wellbeing through materiality, lighting, and an overall open layout. These renders were created alongside design changes in order to visualize the space's maximum potential and to experiment with different materials to fulfill the user's needs.

Located in: Los Angeles, CA

Spring 2023



View from interior foyer into the guest bedroom



View of interior foyer with entrance to bathroom(left) and bar(right)



One of many experiments of the dining room with focuses on lighting and integrating exterior views with interior spaces

2

FOUR CORNERS OF THE MEDITERRANEAN WORLD

In collaboration with Elizabeth Castillo & Meagen Berstecher

Located in an existing courtyard in the California Mens Colony, San Luis Obispo, this hospice garden aims to transport incarcerated individuals outside the prison walls and appeal to the five senses in order to evoke feelings of serenity and escape. After extensively conversing with the inmates, design initiatives were taken to appease their needs.

Located in: San Luis Obispo, CA

Summer 2024

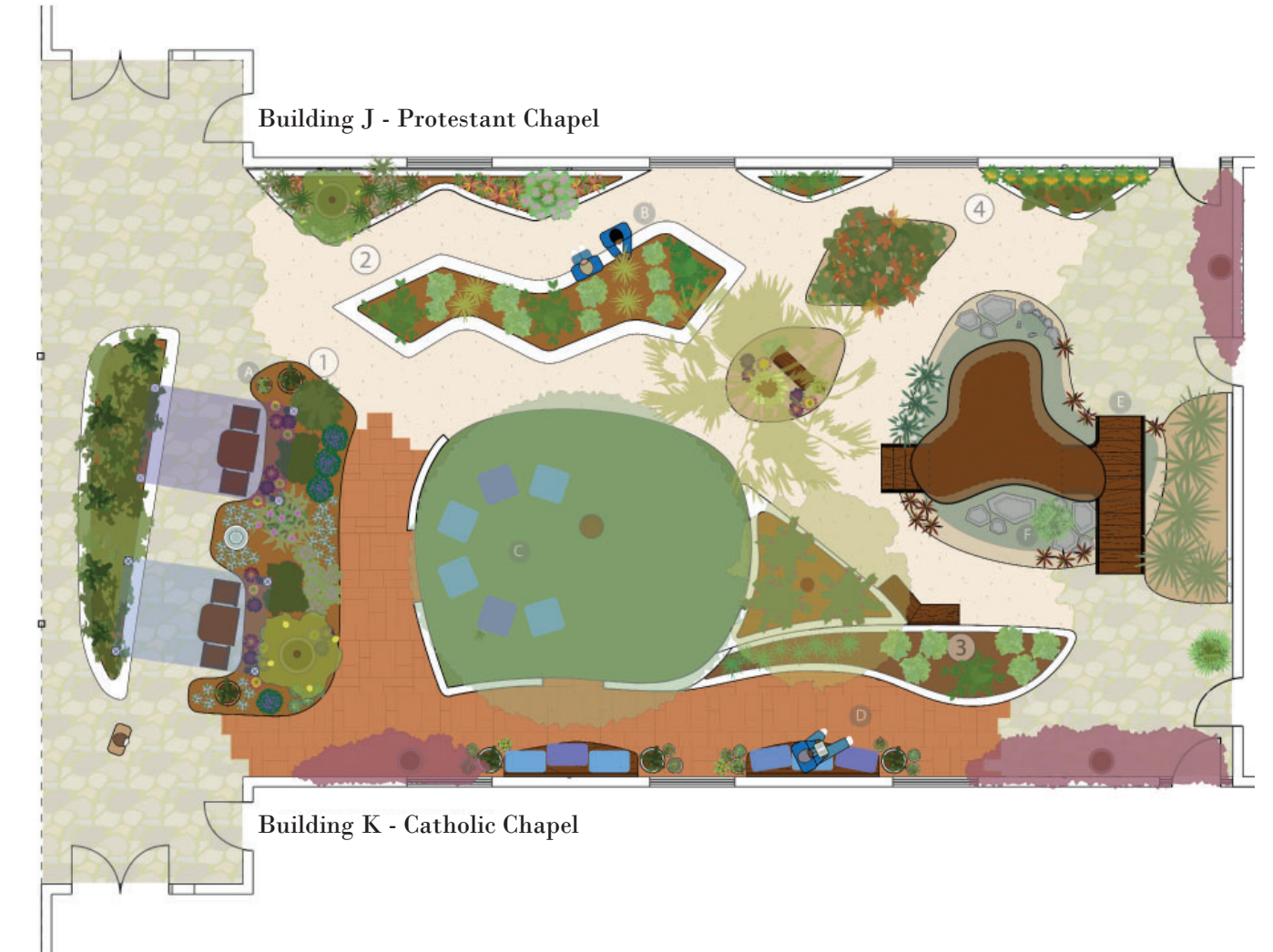
SIDEWALK PLANTERS ADDITION



SITE PLAN

- 1 Mediterranean Region
- 2 Australian Region
- 3 Chilean Region
- 4 South African Region

- A Metal Shade Structures With Fabric Canopy
- B Raised Agricultural Bed With Seat Walls
- C Turf/Clover Area
- D Lounge/Study Area With Wall Bench Seating
- E Bridged Pond With Pebble Margin For Relaxing
- F Gazebo Over Water, Private Reflective Space





Aromatic plants along pathways provide a sense of serenity as inmates stroll through the courtyard



Pavillions provide shade and privacy for those wanting a quiet place to study or converse

3

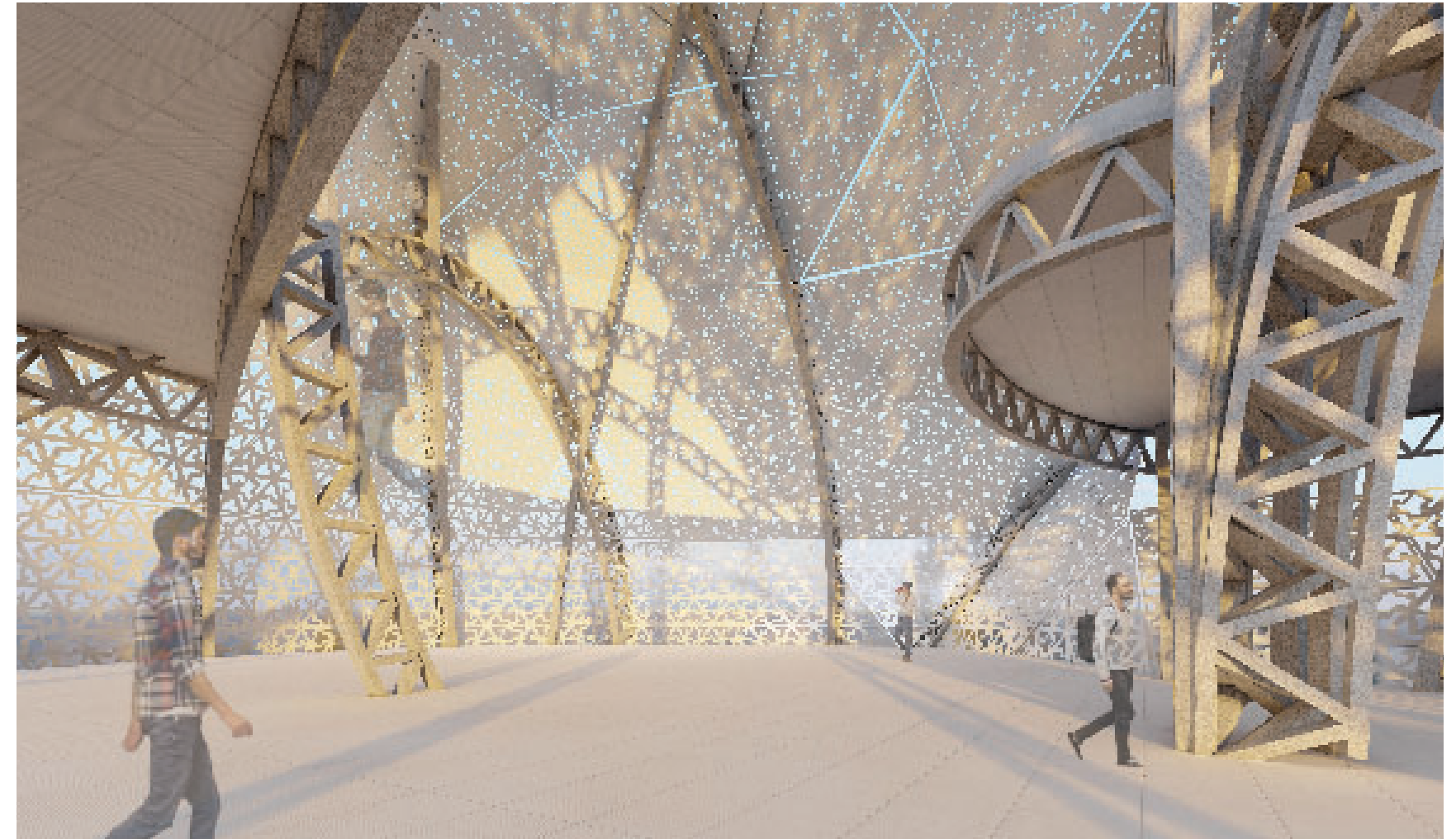
CATHEDRAL OF KELP

In collaboration with Jacob Bjornson

Located on Platform Holly, an abandoned oil rig off the coast of Santa Barbara, the experimental chumash cultural center inspired by kelp serves to educate the public about underwater conservation while also providing spaces for research and housing.





Located in: Santa Barbara, CA

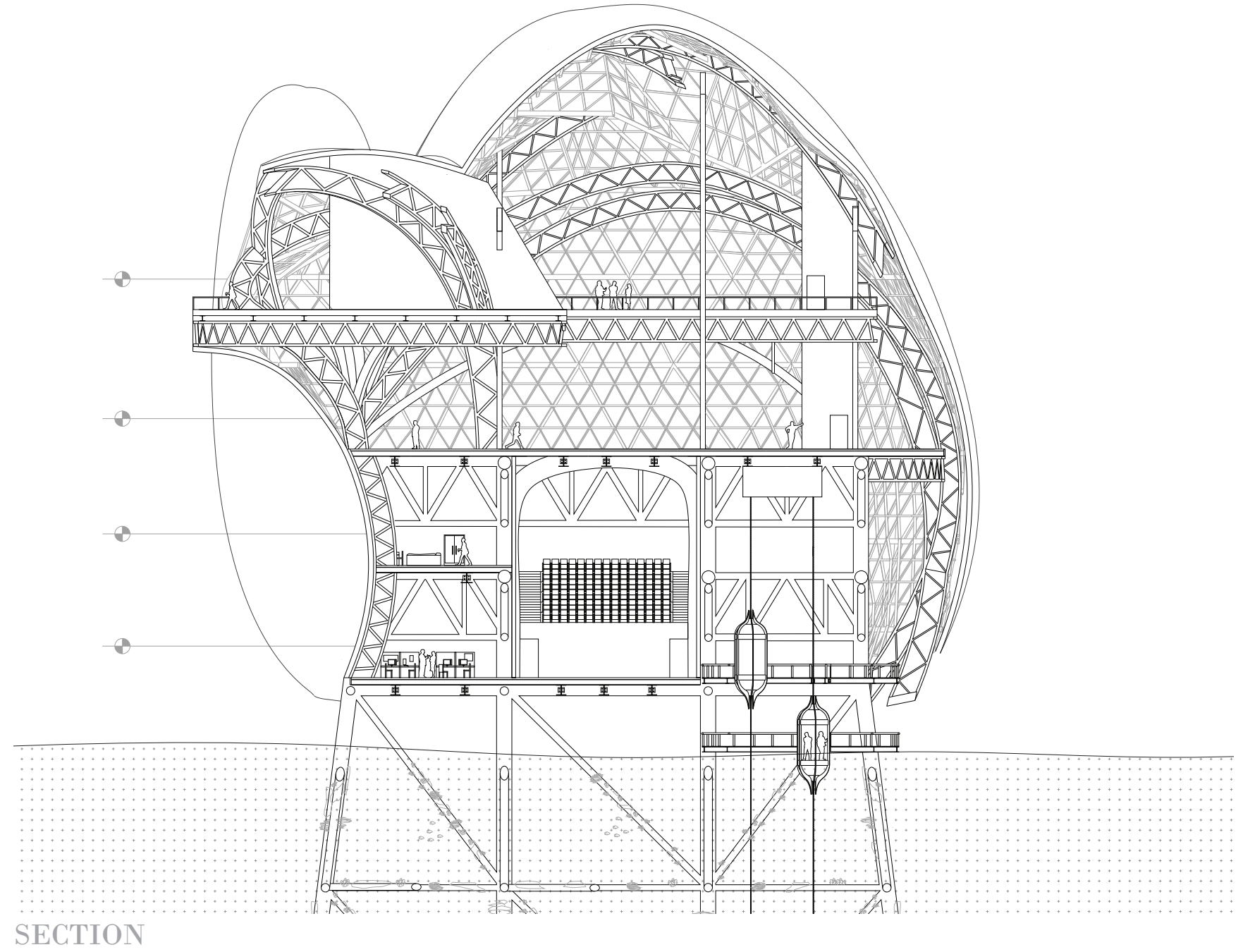
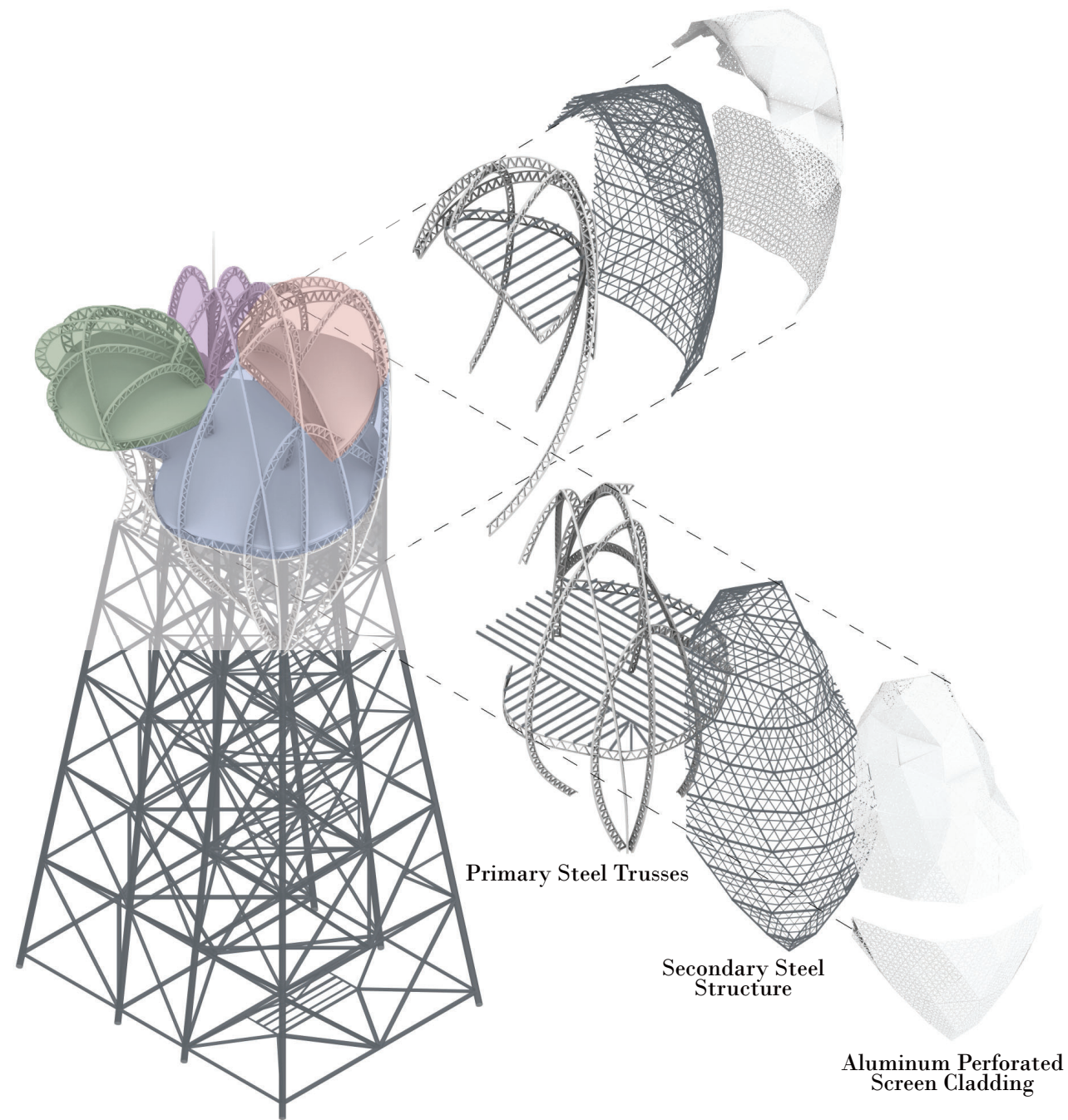
Winter & Spring 2022



The atrium instills a sense of wonder and curiosity about ocean life and the potential sites of abandoned oil rigs

**PROGRAM &
STRUCTURE**

-  Housing//Offices
-  Atrium//Gallery
-  Circulation Core
-  Outdoor Space



4

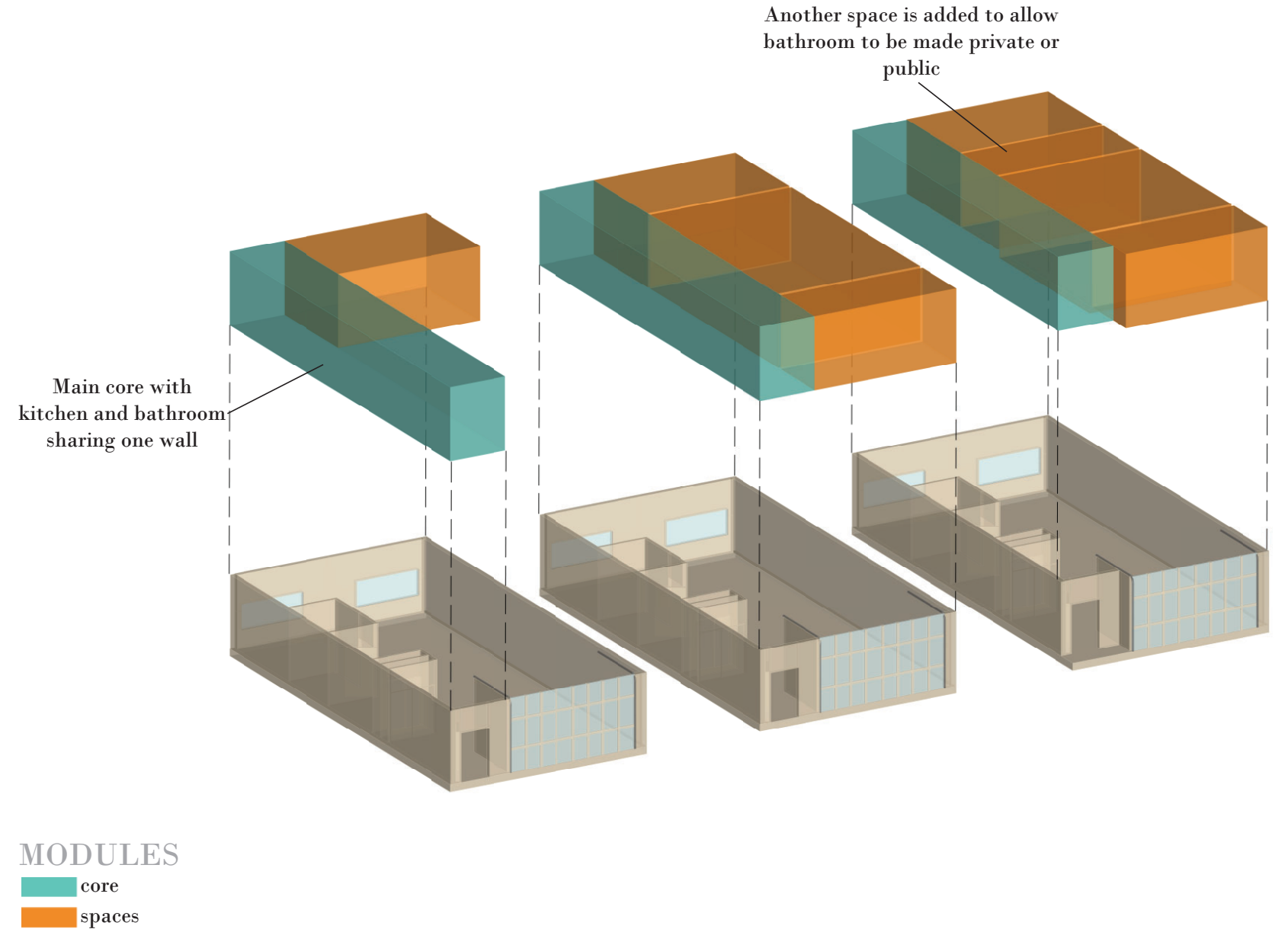
SQUIGGLY WIGGLY

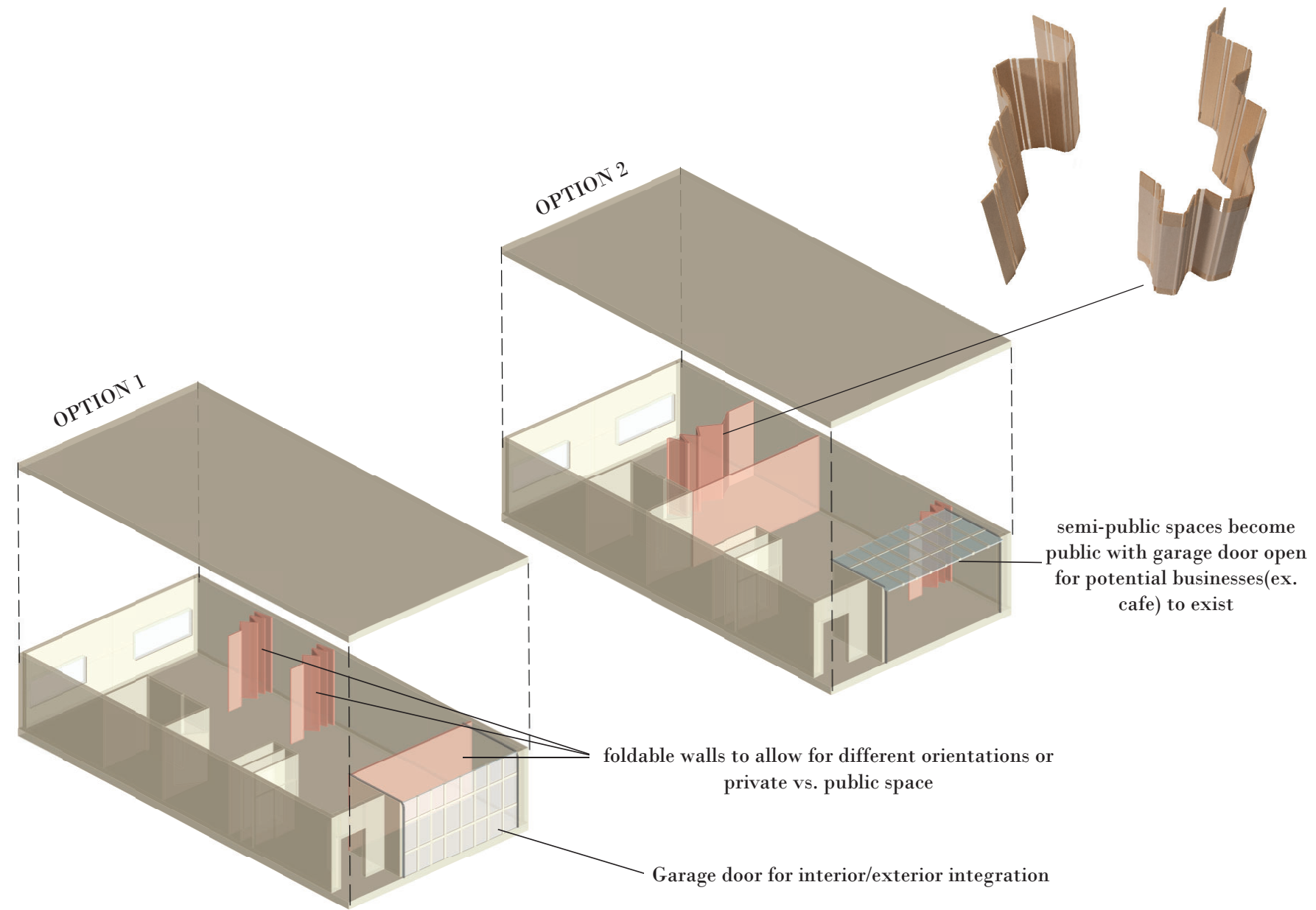
In collaboration with Nate Jackson, Malia Johnson, Anthony Nguyen, & Sami Tapia

Located in St. Louis, Missouri, this whimsical yet affordable housing project aims to serve low-income individuals and families through utilizing prefabricated modules but also allowing user agency and the ability to grow in a single module over a lifetime.

Located in: St. Louis, MO

Winter 2024





1 BEDROOM/STUDIO



The option of making a space public, semi-public, or private is up to the user through the use of the "squiggly wiggly" wall

5

HARMONIC STRINGS

In collaboration with Rakhee Jain

Located at the Pharr Tennis Center in Austin, TX, this project abstracts the energy, strength and dynamism of tennis. Harmonic Strings takes inspiration from the Austin community, the tennis racket, the back and forth rally and lines of music, and the colorful strings pay tribute to Blondie Pharr.

Located in: Austin, TX

Summer 2021



6

BONUS: AZADI

thesis project - still in progress

Located in Baramulla, Kashmir, this complex is designed to provide safety, a place of learning, and a sense of belonging to indigenous Kashmiri communities such that their culture can be preserved. Despite the ongoing political turmoil, this project represents the Kashmiri people's strong desire for change and will help uplift them to better their future.

Located in: Baramulla, Kashmir

Fall 2024-Present

OVERLAY MAP

OCCUPIERS

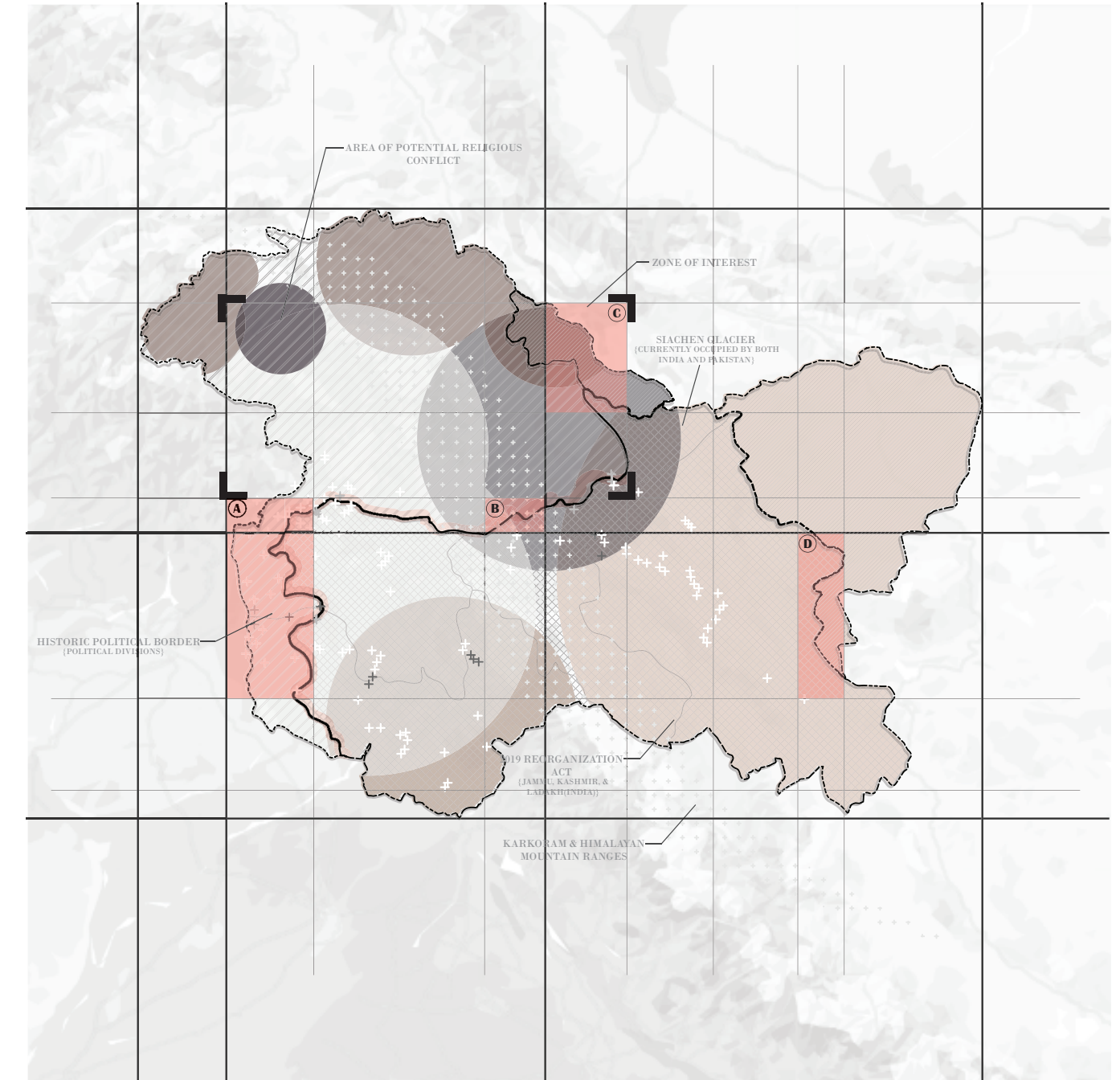
- China
- India
- Pakistan

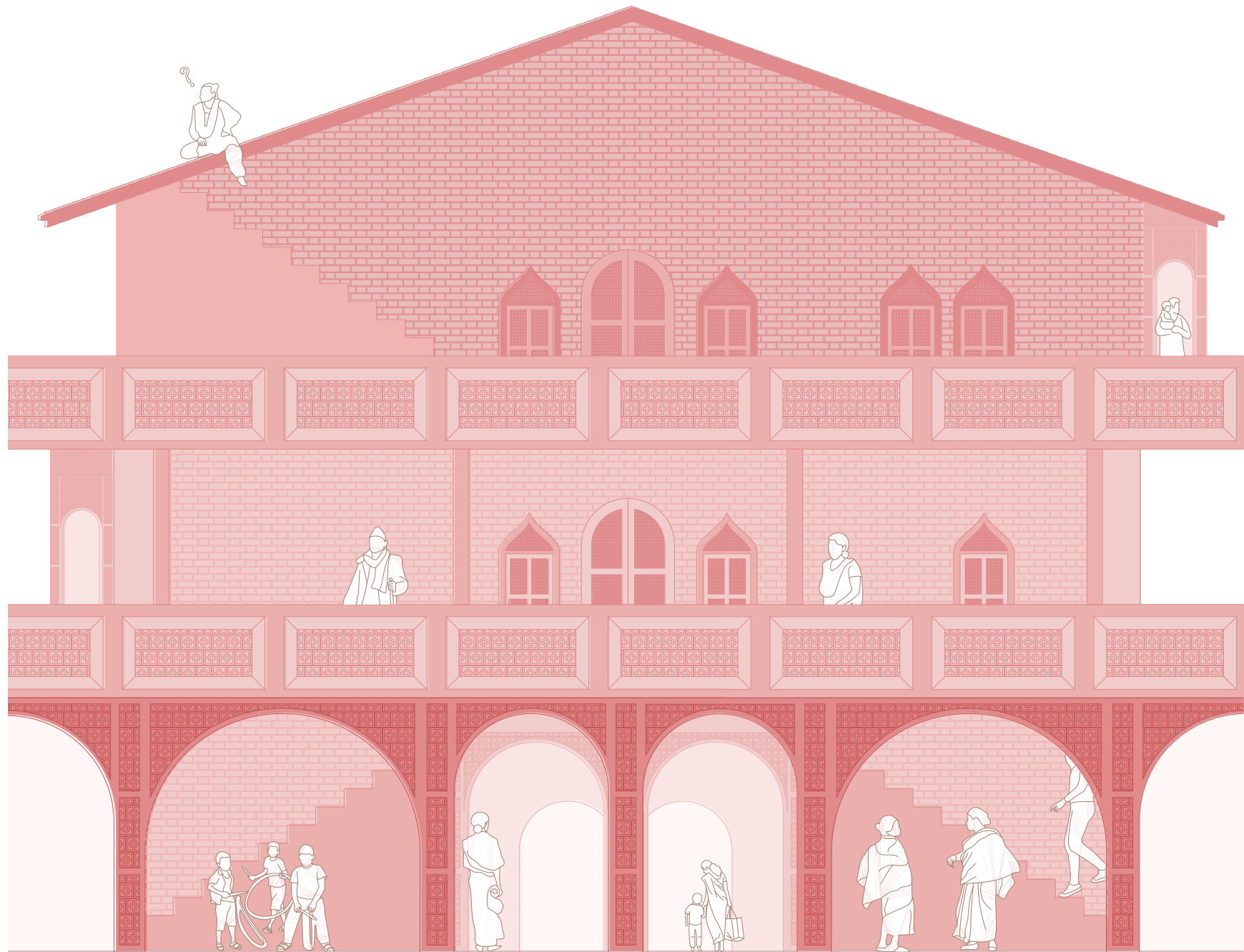
SURVEYED VILLAGES

- Regular
- + Border
- + Historical Border

RELIGIONS

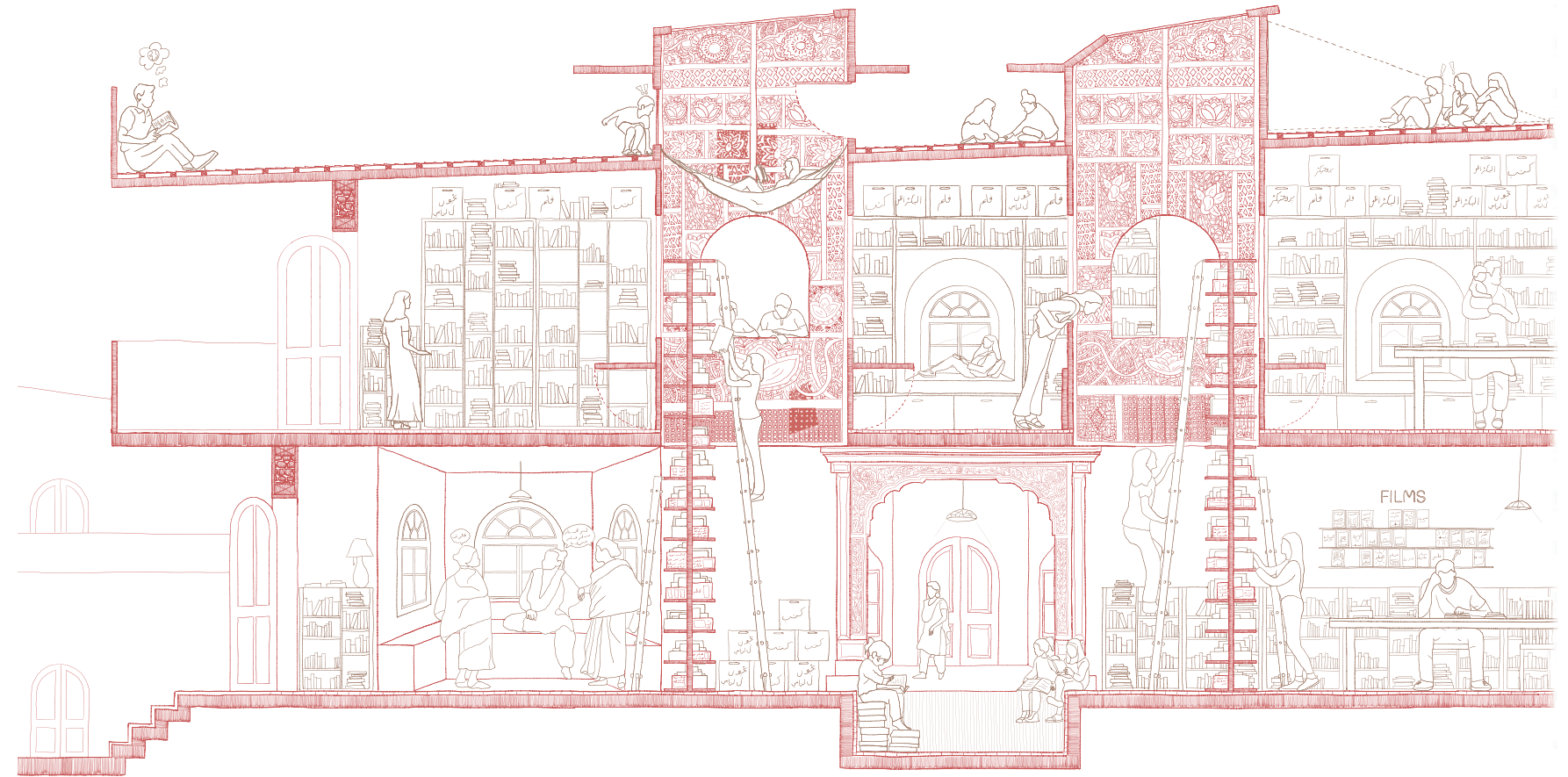
- Islam(Sunni)
- Islam(Shia)
- Buddhism
- Hinduism
- Islam(Ismaili)





HOUSING AND BAZAAR ELEVATION

1/2" = 1'0"



LIBRARY SECTION