

**Jae Young Jang**

---

Portfolio

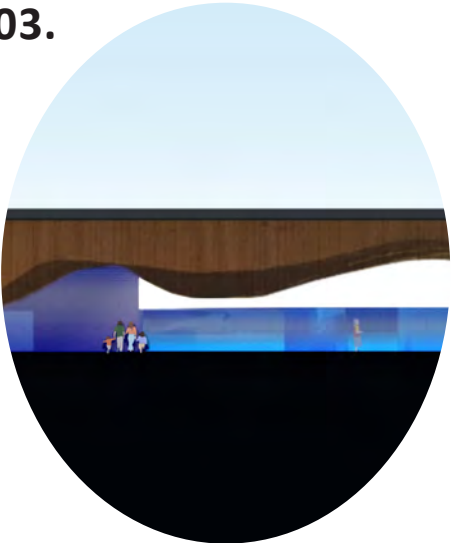
# Contents

01.



Ozark Haven  
2024

03.



Experience From Vestibule  
to Sensory Room  
2022

05.



A Spatial Coherence: Y  
2024

02.



Unfolding Discovery of  
Genuine Beauty  
2024

04.



Nature LAB  
2021



# Ozark Haven

2024 FALL IARD ADVANCED STUDIO - UNIVERSITY OF ARKANSAS



OZARK HAVEN

***Ozark Haven*** is a wellness-focused bike hotel in Fayetteville, Arkansas, inspired by the serene beauty and active lifestyle of the Ozark Mountains. Rooted in the concept of “Embodied Rejuvenation,” the design captures the invisible pleasures of nature, such as breezes, the sound of the creek, and the essence of exploration, harmonizing outdoor adventure with inner tranquility. The design process drew inspiration from the Ozarks, beginning with collages and mood boards that abstracted natural elements such as wood branches, leaves, wind, and transparency into spatial forms. Four key elements—trees, creek, ground, and flowers—shape the hotel’s design through branching structures of trees, reflecting water flows of the creek, earthy textures of the ground, and blooming flowers. This seamless integration of nature and activity creates a tranquil retreat where cycling trails, outdoor exploration, and serene interiors immerse guests in the essence of the Ozarks.

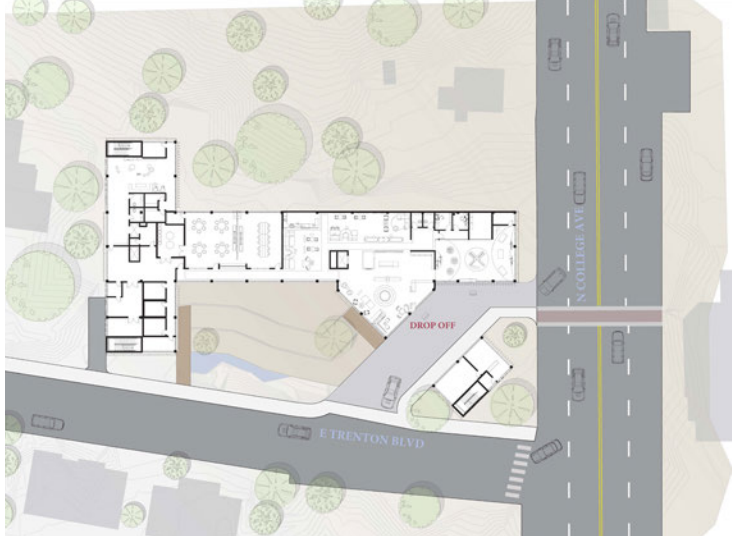


The *Ozark Haven's* design balances both its commercial and residential aspects seamlessly. Access flows from North College Avenue, featuring a car drop-off and bike storage area.

The glass facade of the retail shop, *Iron Mountain*, and the fitness center invite visitors with their openness, while the restaurant, *Loblolly Pine*, faces the hotel's greenery-filled yard. This thoughtful arrangement encourages both guests and the public to engage and enjoy the space.



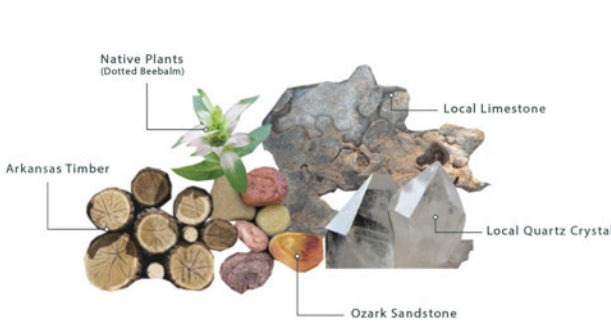
#### LOCATION



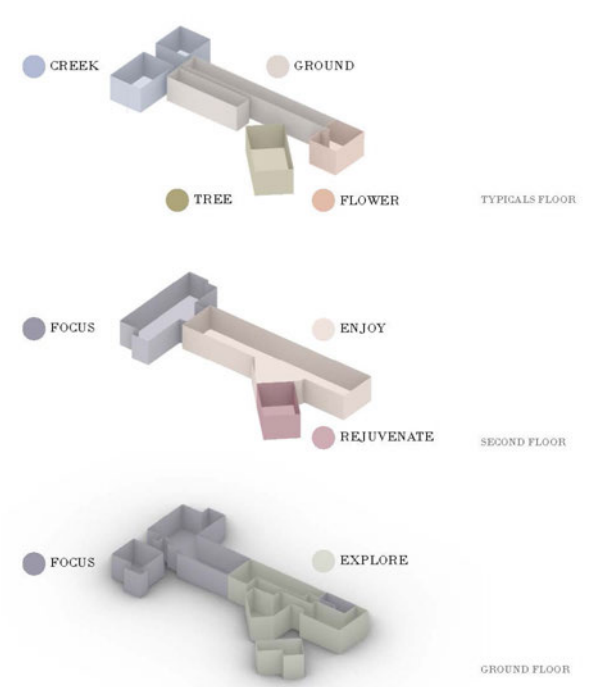
#### NATURE-INSPIRED DESIGN



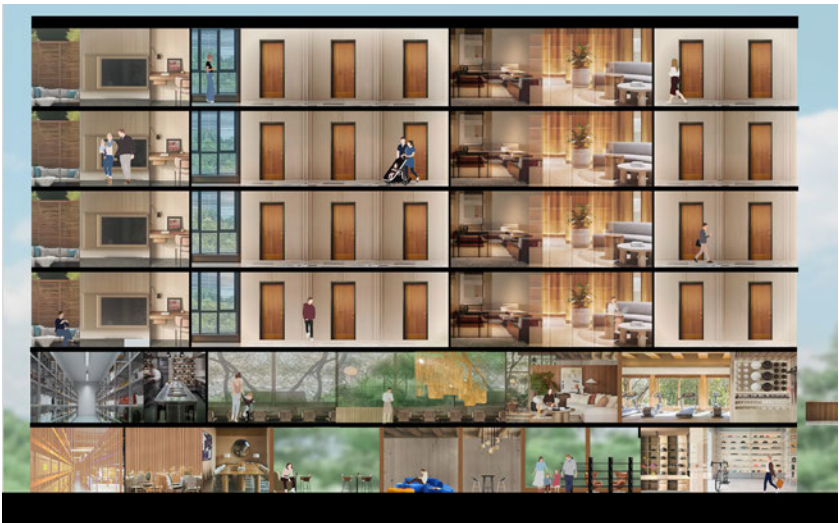
#### LOCALLY-INSPIRED MATERIALITY STUDY



#### PROGRAM AXONOMETRIC DRAWING

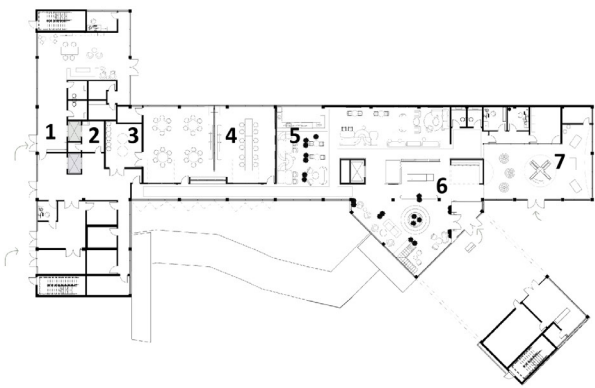


#### COLLAGE SECTION & PERSPECTIVES



# GROUND FLOOR

## EXPERIENCE MAP



GROUND FLOOR PLAN

- 1. Administration
- 2. House-Keeping
- 3. Storage
- 4. Meeting Room
- 5. Creek Cafe
- 6. Check-In Lobby
- 7. Iron Mountain Retail Shop



1 2 3 4 5 6 7



The ground floor design features gravel-like flooring that bridges the nature-friendly outdoors of Ozark, Arkansas, with the warm, wooden tones of the lobby. This welcoming space invites both guests and the public to explore the café, Iron Mountain retail shop, and occasional meeting rooms.



Iron Mountain

1

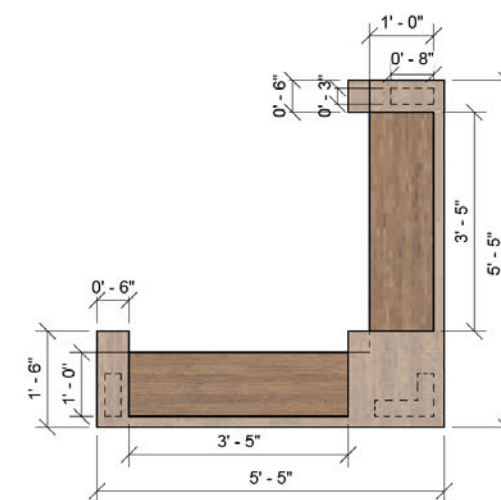
1. FLOOR TILE  
: PEBBLE-FINISHED MOSAIC TILE
2. WOOD WALL MATERIAL  
: KNOTTY ALDER
3. SHELVING FINISH MATERIAL  
: SOFT WALNUT
4. GLASS WALL MATERIAL  
: TRANSLUCENT TEXTURED GLASS
5. METAL WALL PANEL  
: COPPER PERFORATED METAL PANEL
6. WALL COVERING  
: ARKANSAS MAPPING WALLCOVERING
7. CUSTOM SHELVING  
: WOODEN HANGING SHELVING
8. CUSTOM DISPLAY SHELVING  
: WOODEN DISPLAY SHELVING
9. PENDANT LIGHTING  
: CIRIO CIRCULAR PENDANT



## MILLWORK DRAWING

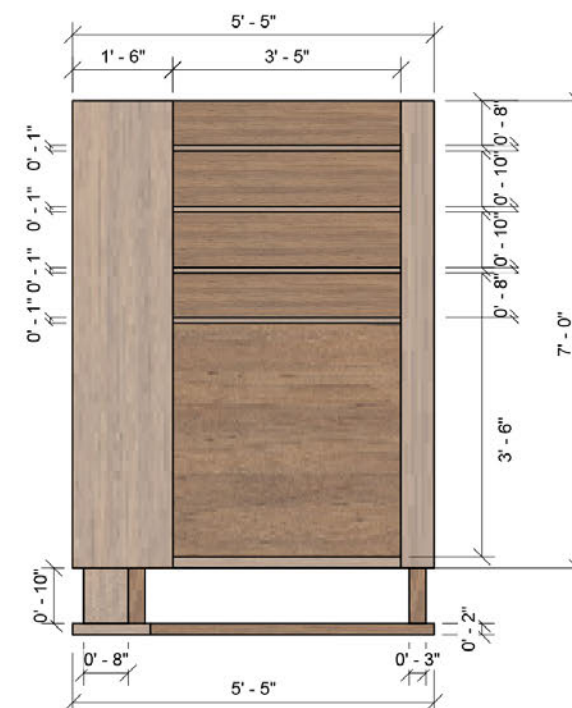


SCALE: 1/16"=1'-0"



**PLAN VIEW**

1 SCALE: 1/2"=1'-0"



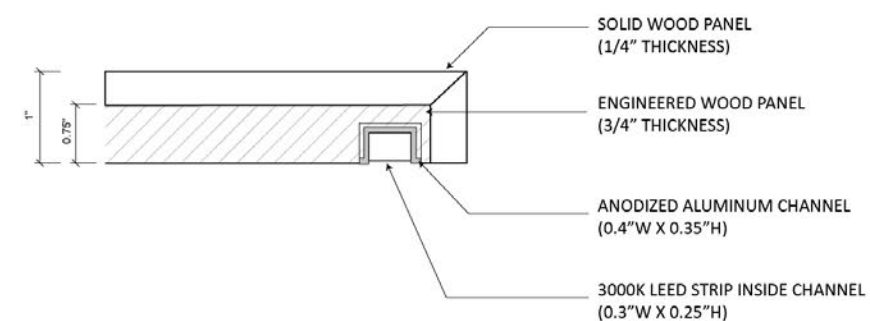
**FRONT VIEW**

SCALE: 1/2"=1'-0"



**SIDE VIEW**

SCALE:  $1/2'' = 1'-0''$

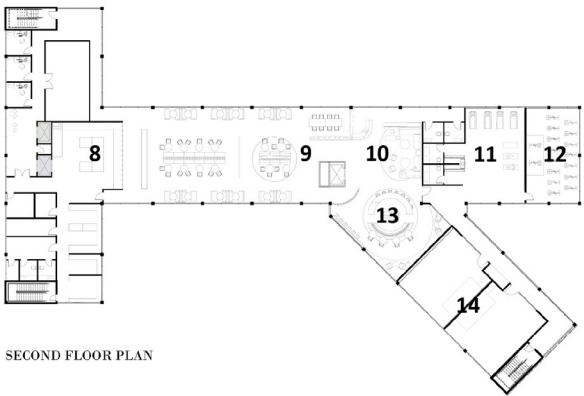


**CONSTRUCTION DETAIL**

SCALE: 1"=1'-0"

# SECOND FLOOR

## EXPERIENCE MAP



- 8. Kitchen
- 9. *Loblolly Pine* Restaurant
- 10. *Loblolly Pine* Check-In Lobby
- 11. Fitness Zone
- 12. Cycling Studio
- 13. *Loblolly Pine* Bar
- 14. Mixed-Use Studios



8

9

10

11

12



The second-floor design extends the natural connection with tree branch elements rooted from the first floor, enriched by wooden-textured walls, branch-inspired lighting, and a custom irregular-shaped wooden back bar. These details create a sense of depth, inviting visitors to further immerse themselves in the experience of nature.



LOBLOLLY PINE BAR

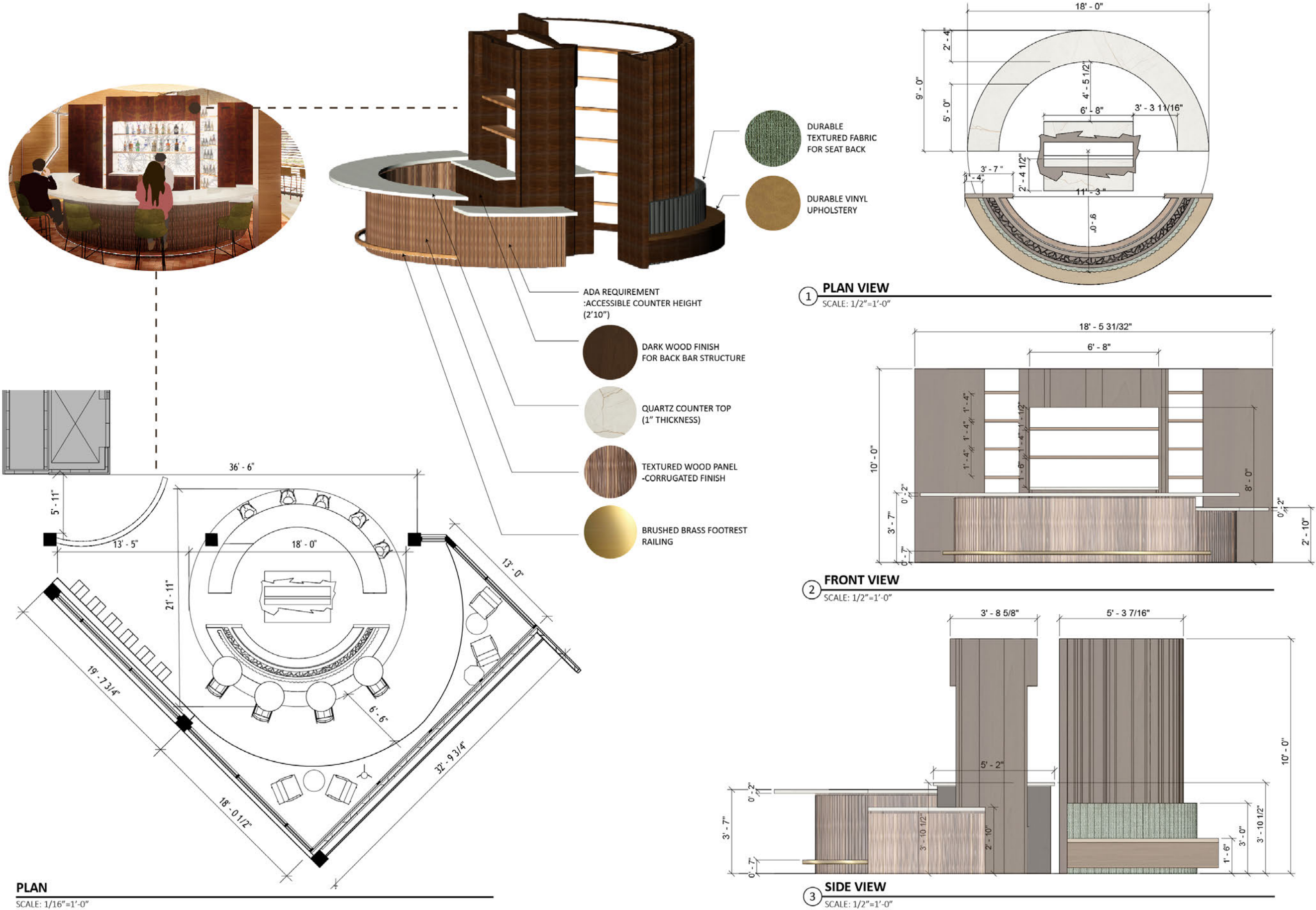


1. FLOOR TILE THROUGHOUT  
: CREMA MARFIL HONED MOSAIC TILE
2. ACCENT TILE  
: TERRACOTTA MATTE PORCELAIN TILE
3. COUNTERTOP  
: POLISHED QUARTZ SLAB
4. CUSTOM BAR FINISH  
: DARK WALNUT
5. CUSTOM BAR COUNTER PANELING  
: FLUTED WOOD
6. BAR STOOL UPHOLSTERY  
: CARRARA DARK GREEN VINYL
7. CUSTOM BACK-BAR WITH COUNTER
8. BAR STOOL  
: ALETA BAR STOOL
9. CUSTOM TREE-LIKE LINEAR LIGHTING
10. CUSTOM PENDANT LIGHTING  
: WOVEN FABRIC CIRCULAR PENDANT
11. PENDANT LIGHTING  
: FLAMINGO VIBIA PENDANT LAMP
12. CUSTOM BACK-BAR PAINTING  
: GEORGE DOMBEK, TOUR DE TREE



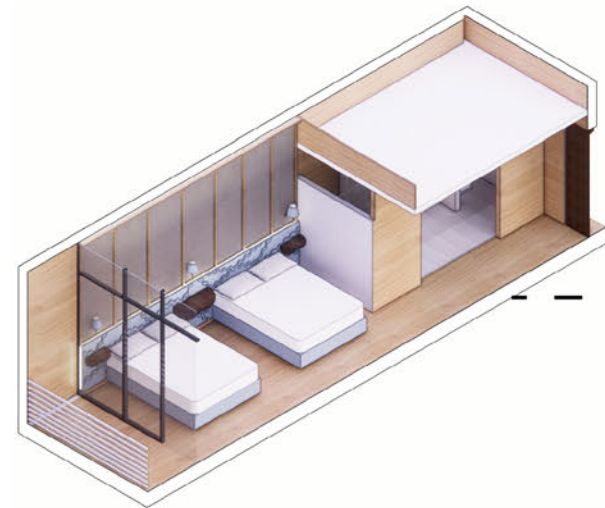
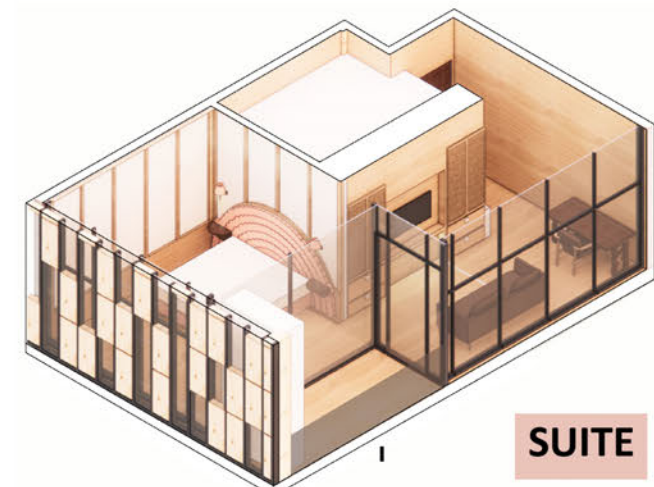
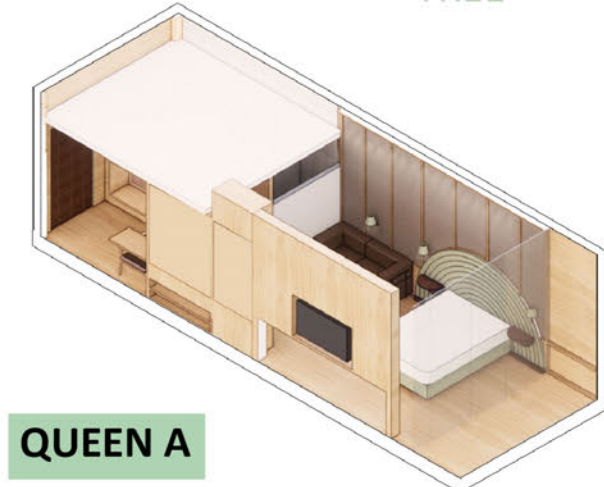
# LOBLOLLY PINE BAR

MILLWORK DRAWING



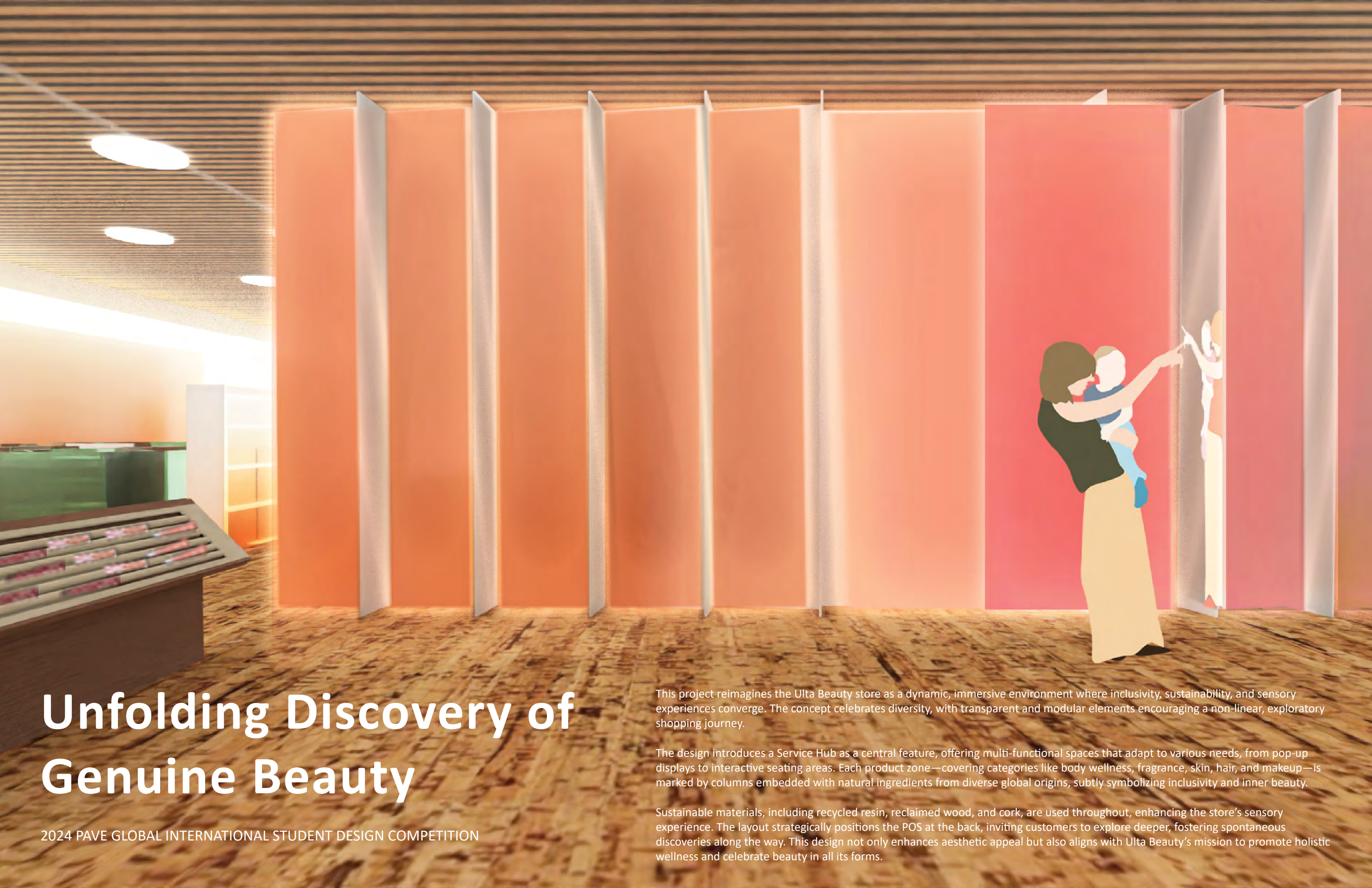
# TYPICAL FLOORS

The typical floors include four types of rooms: King, Queen A, Queen B, and Suite. Each room embraces one of the four natural elements: ground, tree, creek, and flower. These nature-inspired designs give each room a unique character, creating meaningful and memorable experiences for guests. At the same time, consistent materials and furnishings maintain a sense of unity throughout the hotel.





GUESTROOM - KING



# Unfolding Discovery of Genuine Beauty

2024 PAVE GLOBAL INTERNATIONAL STUDENT DESIGN COMPETITION

This project reimagines the Ulta Beauty store as a dynamic, immersive environment where inclusivity, sustainability, and sensory experiences converge. The concept celebrates diversity, with transparent and modular elements encouraging a non-linear, exploratory shopping journey.

The design introduces a Service Hub as a central feature, offering multi-functional spaces that adapt to various needs, from pop-up displays to interactive seating areas. Each product zone—covering categories like body wellness, fragrance, skin, hair, and makeup—is marked by columns embedded with natural ingredients from diverse global origins, subtly symbolizing inclusivity and inner beauty.

Sustainable materials, including recycled resin, reclaimed wood, and cork, are used throughout, enhancing the store’s sensory experience. The layout strategically positions the POS at the back, inviting customers to explore deeper, fostering spontaneous discoveries along the way. This design not only enhances aesthetic appeal but also aligns with Ulta Beauty’s mission to promote holistic wellness and celebrate beauty in all its forms.

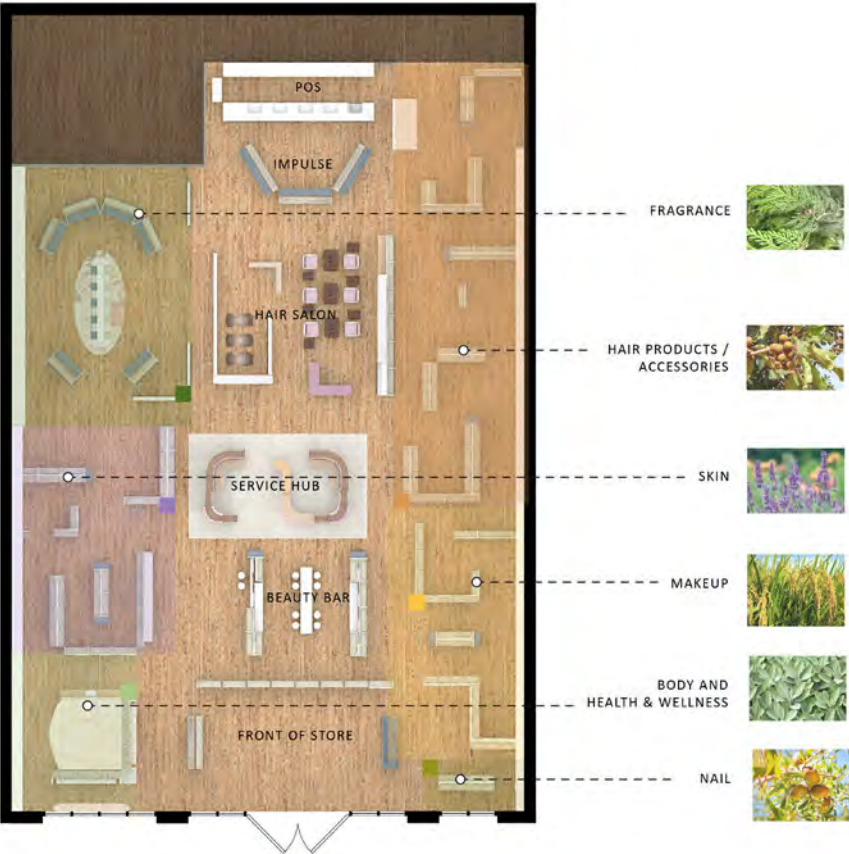


## FLOOR PLAN

The non-linear layout leads customers through an unexpected journey, with columns marking each product zone.

These columns are embedded with natural ingredients that symbolize diversity: *Argan oil* (Nail) from Morocco, *Sage tree* (Body & Wellness) from North America, *Rice bran* (Makeup) from Asia, *Lavender* (Skin) from Southern Europe, *Cedar tree* (Fragrance) from the Mediterranean, and *Shea butter tree* (Hair) from West Africa.

Each ingredient's origin enriches the design, subtly celebrating global beauty and inclusivity.



This project reimagines the Ulta Beauty store as a dynamic, immersive environment where inclusivity, sustainability, and sensory experiences converge. The concept celebrates diversity, with transparent and modular elements encouraging a non-linear, exploratory shopping journey.

The design introduces a Service Hub as a central feature, offering multi-functional spaces that adapt to various needs, from pop-up displays to interactive seating areas. Each product zone—covering categories like body wellness, fragrance, skin, hair, and makeup—is marked by columns embedded with natural ingredients from diverse global origins, subtly symbolizing inclusivity and inner beauty.

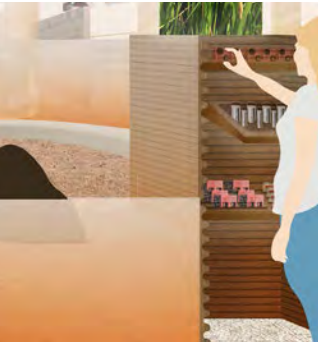
Sustainable materials, including recycled resin, reclaimed wood, and cork, are used throughout, enhancing the store's sensory experience. The layout strategically positions the POS at the back, inviting customers to explore deeper, fostering spontaneous discoveries along the way. This design not only enhances aesthetic appeal but also aligns with Ulta Beauty's mission to promote holistic wellness and celebrate beauty in all its forms.

## DESIGN GOALS



### Expansion of Health & Wellness

The design shifts focus from appearance to holistic wellness, promoting products and services that nourish the mind, body, and spirit. Natural materials and soft lighting create a serene environment that celebrates inner beauty and well-being.



### Flexible Service Hub

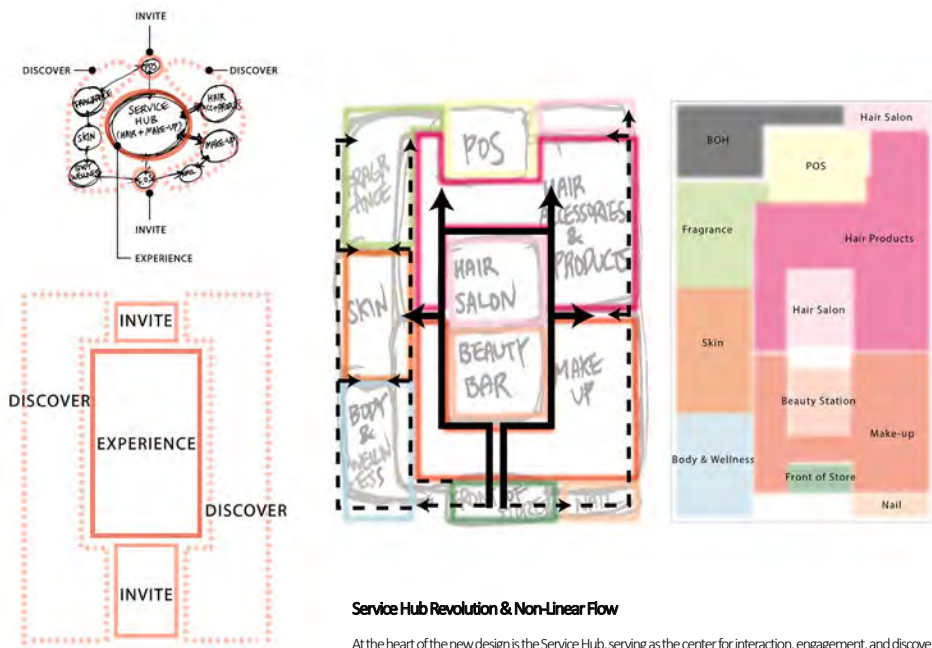
A multi-purpose hub that adapts to various needs—serving as a waiting area, an event observation zone, or a pop-up space for new displays. This dynamic space keeps customers engaged and comfortable.



### POS Placement

Positioning the POS at the back of the store encourages customers to explore more products, fostering unexpected discoveries and impulse purchases as they journey deeper into the space.

## REIMAGINING THE EXPERIENCE



EXPERIENCE MAP

Body & Health and Wellness

Highlight the natural ingredients that match each column's theme, giving shoppers playful hints and a touch of entertainment as they explore the space.



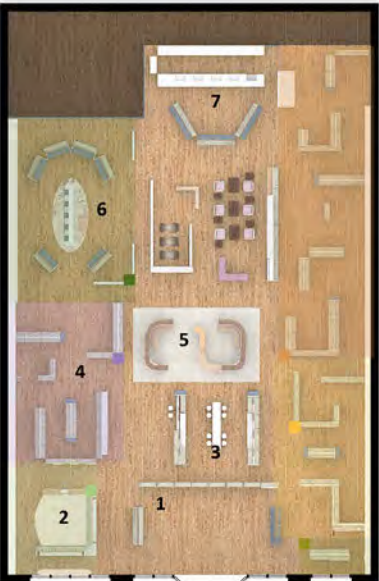
Service Hub

Incorporate multi-functional shelving that doubles as seating, providing a bespoke experience for customers and enhancing the personalized touch. The bespoke experience is continuously evolving based on customer interaction.

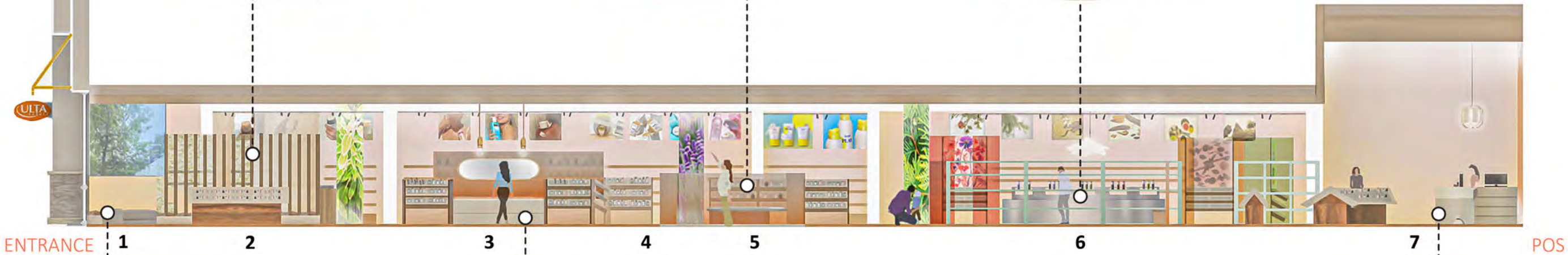


Fragrance

Highlight key fragrance notes using both visual graphics and an olfactory bar display, creating an immersive sensory experience for shoppers.



- 1. Front of Store
- 2. Body & Health and Wellness
- 3. Beauty Bar
- 4. Skin
- 5. Service Hub
- 6. Fragrance
- 7. Impulse + POS



ENTRANCE

1

2

3

4

5

6

7

POS



Front of Store

Utilize translucent resin panels in Ulta Beauty's signature colors, paired with lenticular mirror walls, to symbolize the unique beauty journey of each individual at Ulta Beauty.



Beauty Bar

Design a makeup discovery nook alongside the beauty bar, offering customers the opportunity for personal beauty exploration. Incorporate a virtual makeup tablet that allows users to digitally try on makeup, enhancing their personalized experience.



Impulse and POS

Introduce a modular impulse display that adapts easily to different product types and placements, while the multi-height POS counter ensures accessibility and inclusivity, embracing diversity in design.



Cork Floor Tile

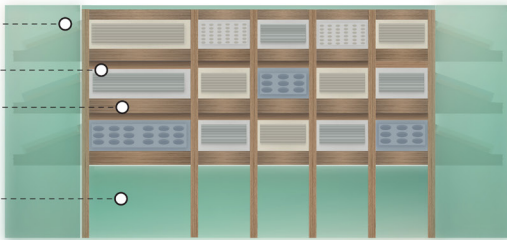
Sustainably-sourced Area Rug

Recycled Resin

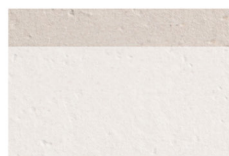
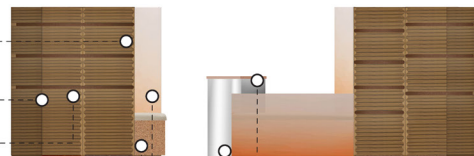
SERVICE HUB

## CUSTOM MILLWORK / DISPLAY

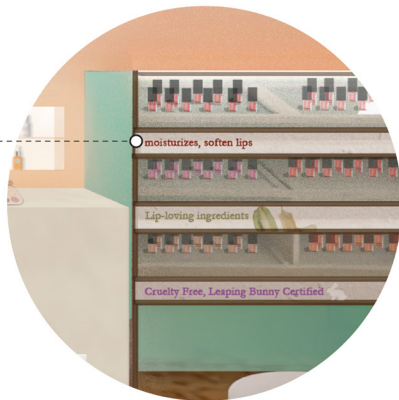
- MODULAR ADJUSTABLE SHELVING WITH INTERLOCKING JOINT
- RECYCLED PAPER STONE WITH CUSTOM VARYING TEXTURED CORRUGATED SURFACE
- RECLAIMED WOOD SHELVING FOR SUSTAINABILITY AND WARMTH
- COLOR GRADIENT RECYCLED RESIN BACKING WITH TRANSLUCENT PANELS



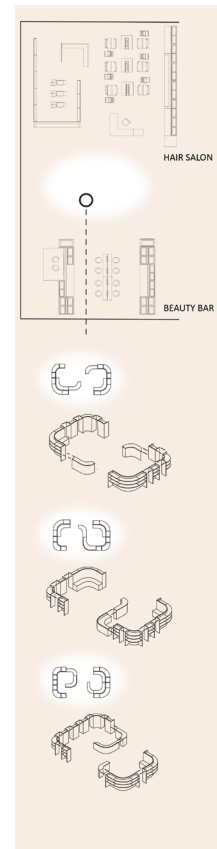
- MODULAR RECLAIMED CORRUGATED WOOD SHELVING
- RECLAIMED REINFORCED HARDWOOD BLOCKING, 1-1/2" THICKNESS
- BUILT-IN LED ACCENT LIGHTING ALONG THE SHELVES
- SOLID CORK BASE
- COLOR GRADIENT TRANSLUCENT RECYCLED RESIN PANEL
- RECYCLED POWDER-COATED STEEL FRAMEWORK
- RECLAIMED WOOD TOP



- SUSTAINABLE TAGGING SOLUTION: REPLACE TRADITIONAL PLASTIC TAGS WITH DOUBLE-SIDED PLANTABLE SEED PAPER TAGS



- SEAMLESS TRANSITION FROM REGULAR PRODUCT DISPLAYS TO EVENT OR SPECIAL OCCASION SETUPS WITH EASY ADJUSTABLE MODULARITY



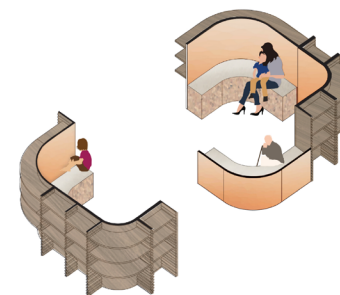
## DYNAMIC DISPLAY ZONE



### The Dynamic Display Zone

emphasizes seasonal displays, new product launches, and collaborative pop-up installations, allowing for quick trends and frequent changes. This creates an environment of constant discovery that keeps the shopping experience fresh and engaging.

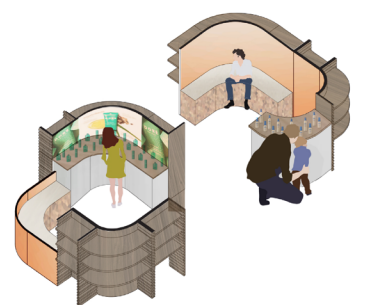
## INCLUSIVE REST AREA



### The Inclusive Rest Area

focuses on comfort and inclusivity, providing customers with a space to unwind while waiting for hair or beauty services, or simply to take a break during their shopping journey. This zone makes every visitor feel welcomed and valued, enhancing their overall experience.

## INTEGRATED EXPERIENCE HUB



### The Integrated Experience Hub

merges functional seating with dynamic product displays, offering a versatile space that balances comfort and multi-functionality. Customers can explore products while enjoying seating areas, discovering small surprises through interactive elements.

# Mind, Body & Spirit

Reclaimed Wood

Environmentally Friendly  
Translucent Resin

Hemp Fabric Curtain

Wood Look Cork Tile

BODY & HEALTH AND WELLENSS



the possibilities are beautiful. Fragrance

Floral

Sweet

Fresh & Citrus

Warm

FRAGRANCE



Reclaimed Wood



Paper stone



Reclaimed Steel



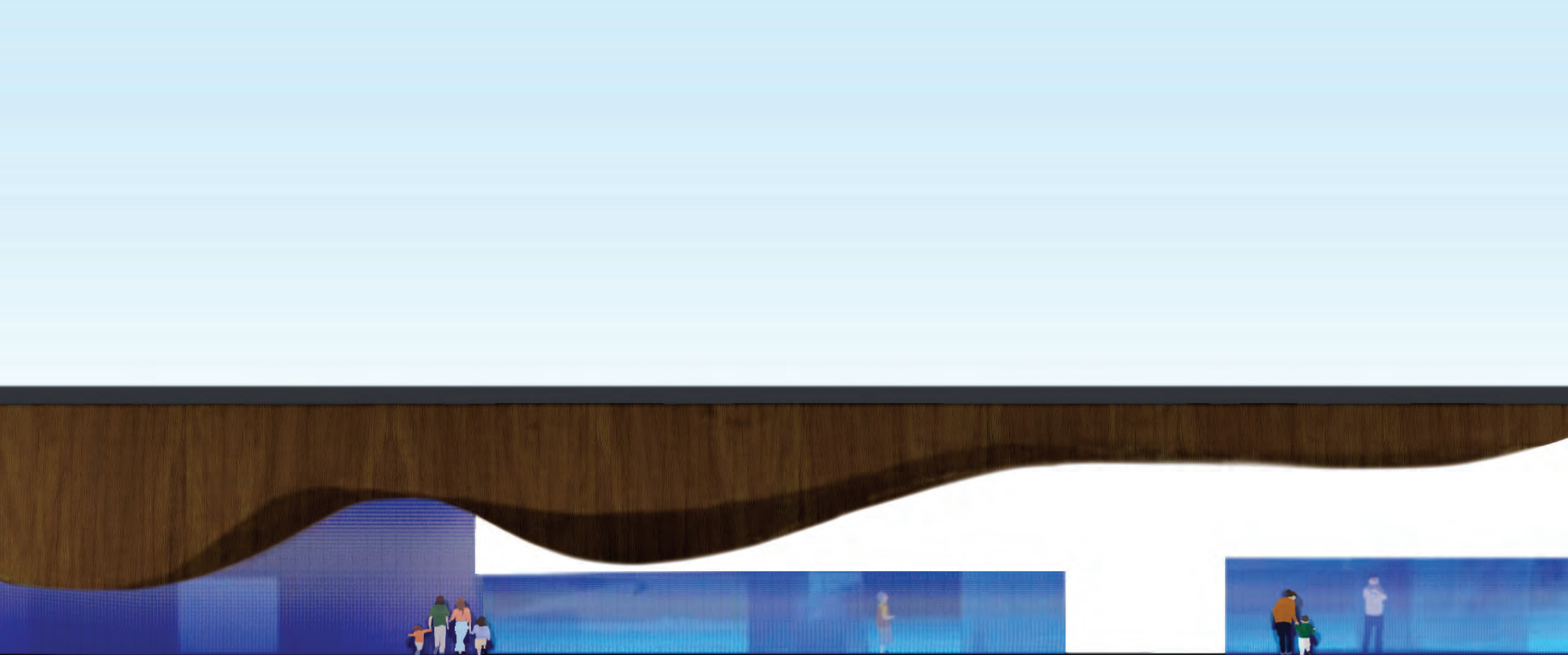
Floral Floor Tile



Organic Embedded  
Recycled Resin



Sustainably Sourced  
Woven Fabric



# Experience From Vestibule to Sensory Room

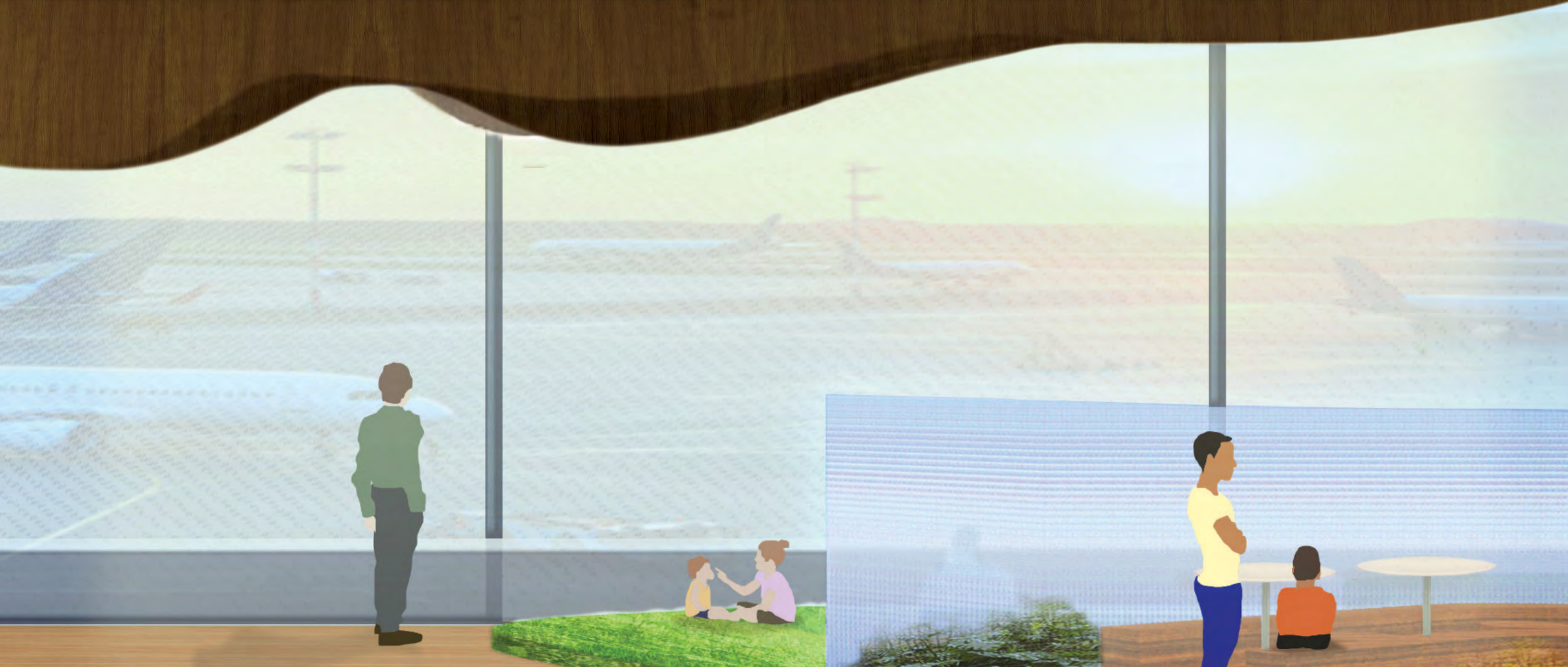
2022 SUMMER INTERNSHIP - STUDIO ORD Studio Gang | SCB | Corgan | Milhouse | STLarchitects

StudiORD

As a design intern at *Studio ORD*, I contributed to a project for *O'Hare Global Terminal* aimed at reducing the psychological stress of air travel by creating an inclusive hub. This space incorporates three key zones: **vestibule**, **restorative space**, and **sensory room**, offering a calming transition from the airport's chaos.

The vestibule acts as a buffer, leading travelers to the restorative space, which provides privacy and relaxation. From there, the path guides to the sensory room, specifically designed for individuals with special needs, such as autism.

Unifying elements like partitions, ceiling baffles, and landscape design guide users through the spaces. The ceiling baffles gradually lower as you move from the vestibule to the sensory room, enhancing the sense of privacy and intimacy. Both fixed and movable partitions in the vestibule and restorative space give users flexibility and autonomy in shaping their environment. Landscape design is seamlessly integrated throughout all three zones, enhancing the unity and harmonization of the entire space.



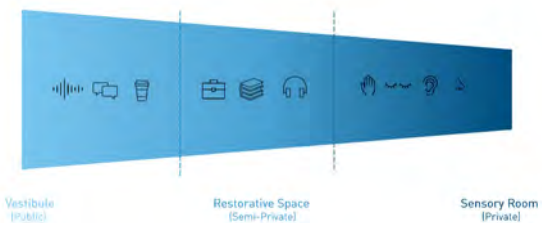
## LOCATION PROPOSAL



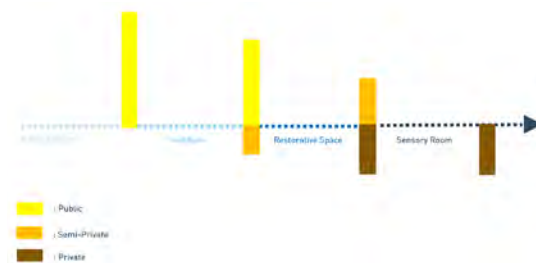
## PRECEDENT STUDY FOR USER-AWARE DESIGN



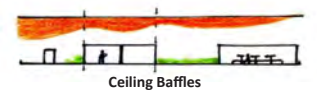
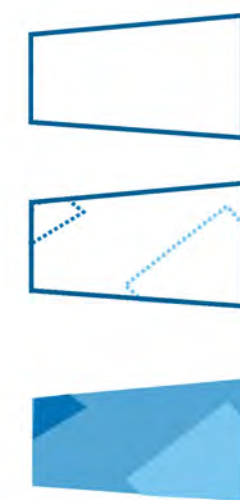
## PROCESSION FROM VESTIBULE TO SENSORY ROOM



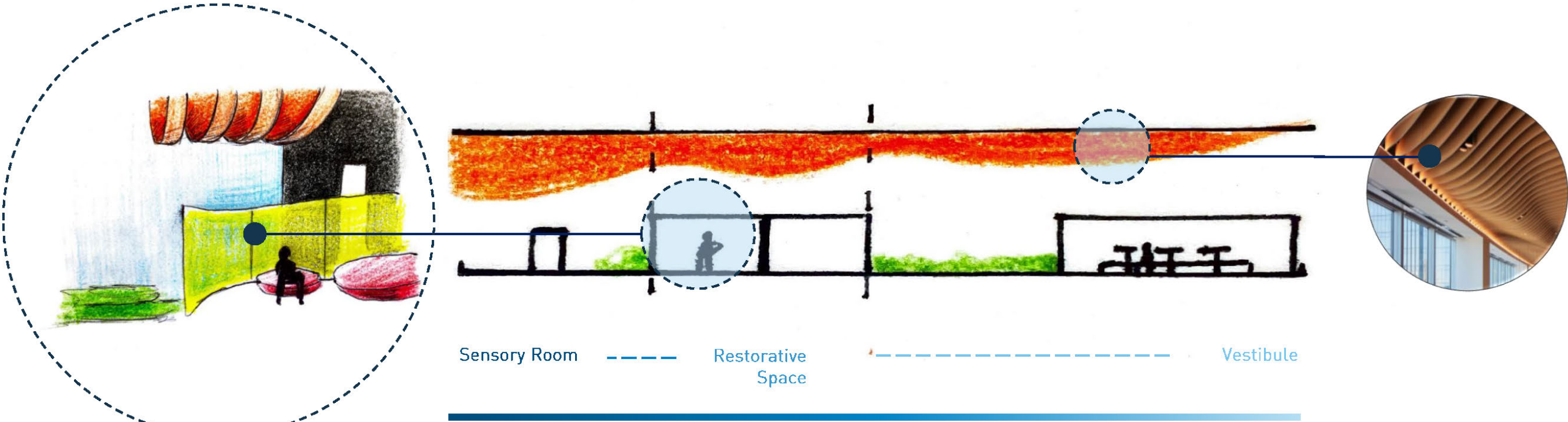
## USER PRIVACY DEGREE



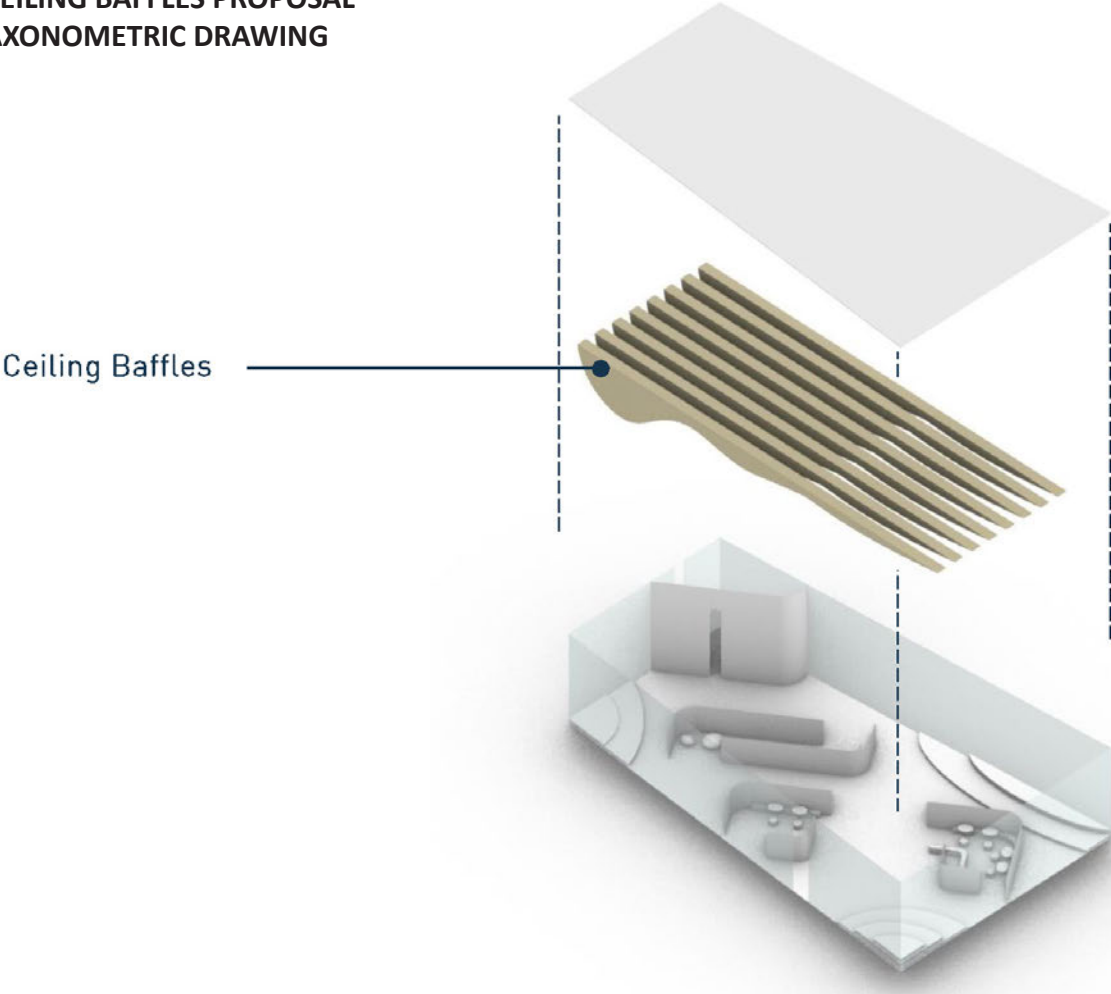
## DESIGN PROPOSAL



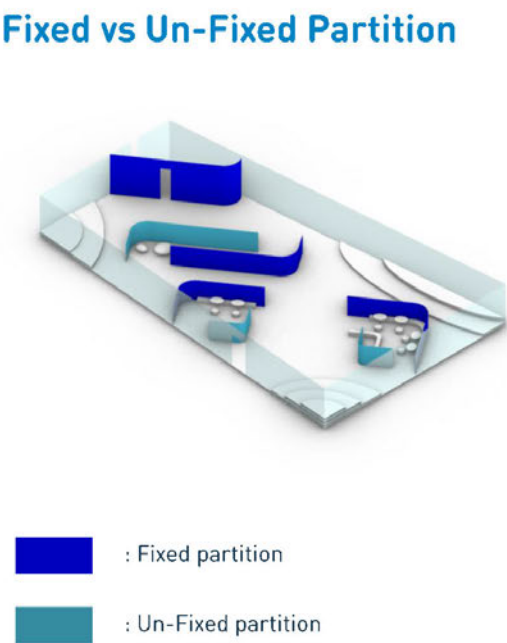
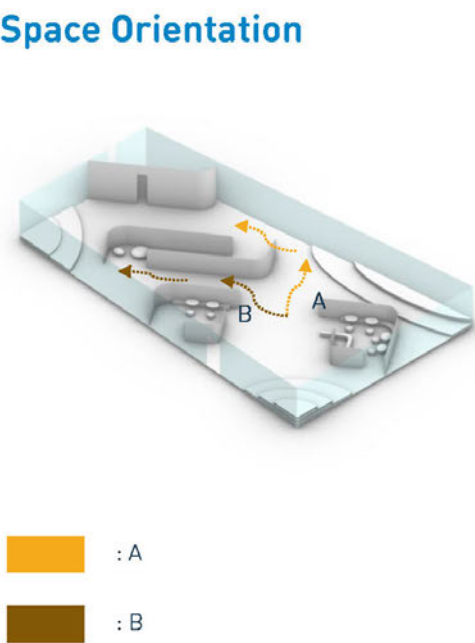
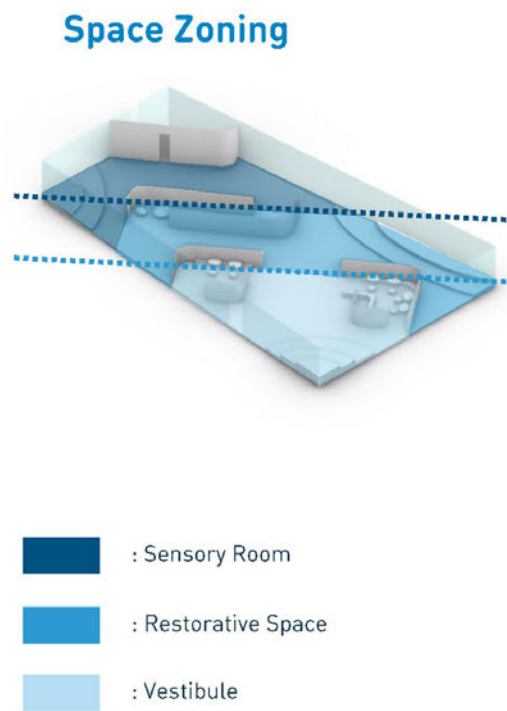
CEILING DESIGN SCENARIO



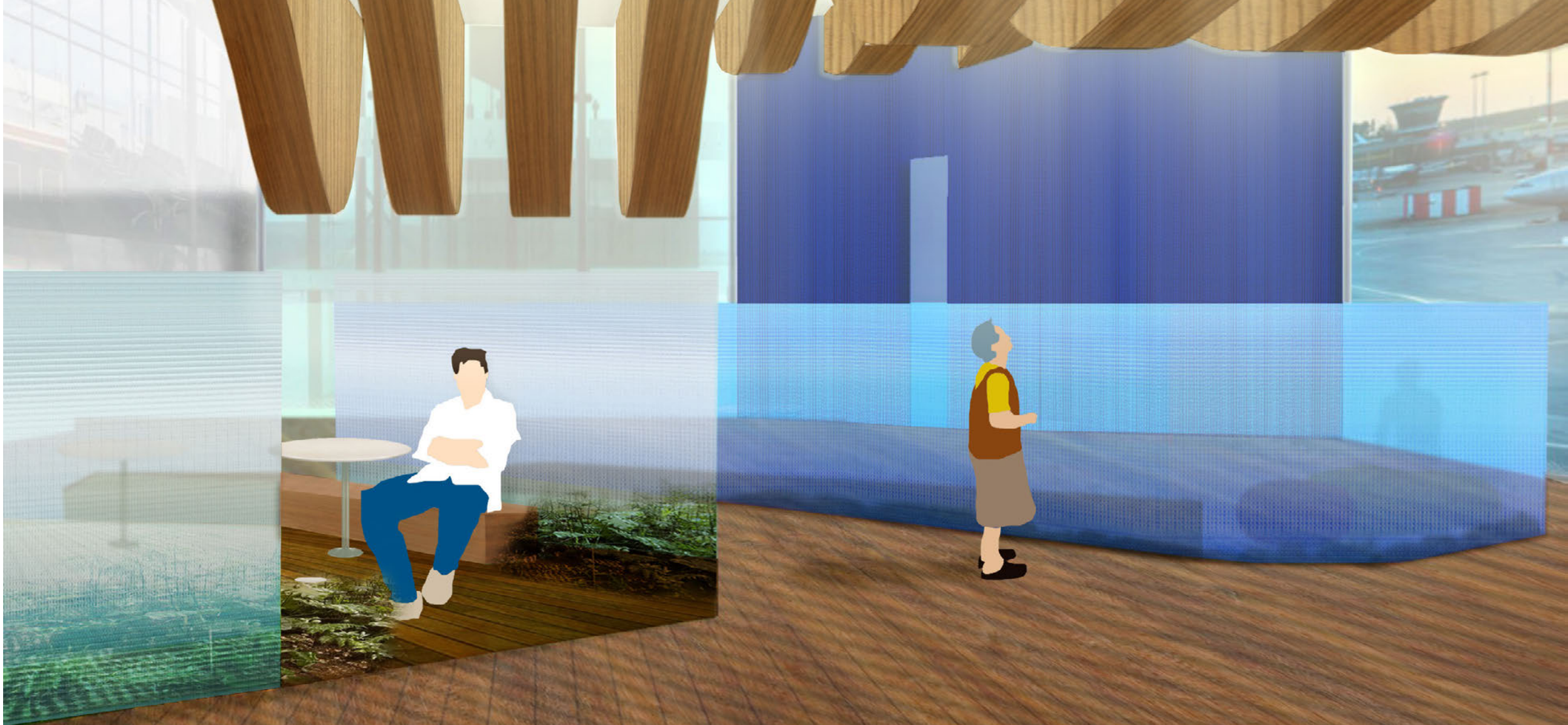
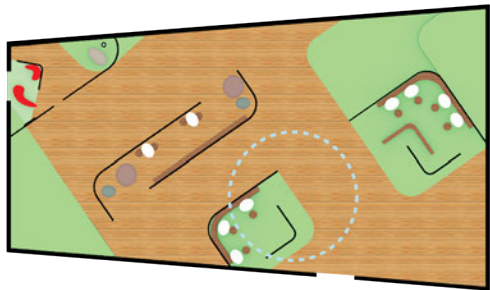
CEILING BAFFLES PROPOSAL  
AXONOMETRIC DRAWING



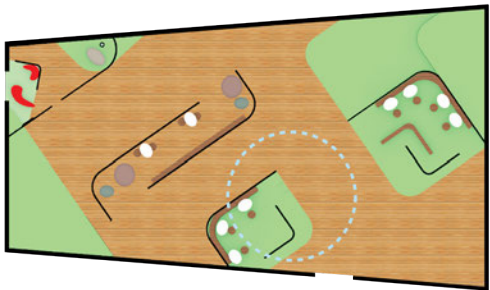
DESIGN DIAGRAMS



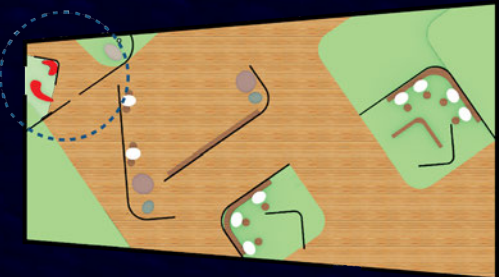
VESTIBULE



RESTORATIVE SPACE



SENSORY ROOM





# Nature LAB

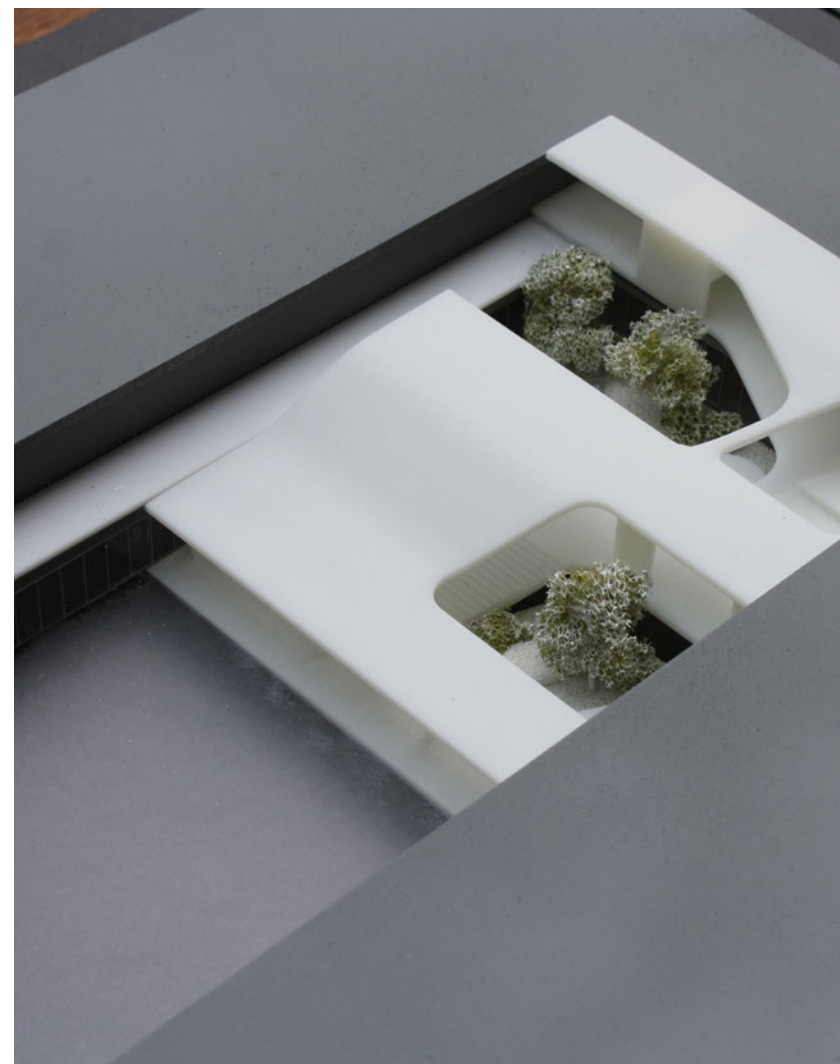
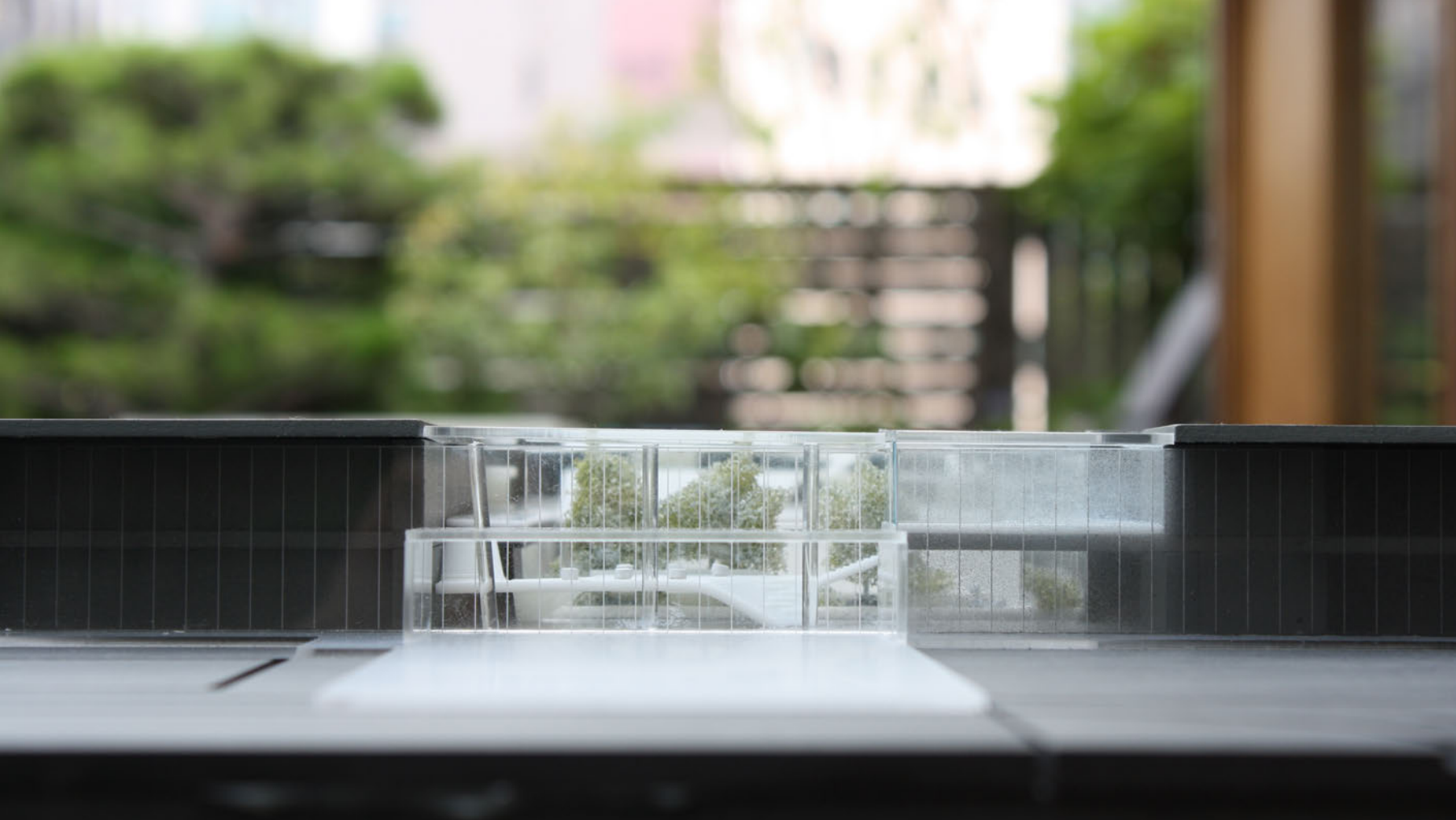
2021 SUMMER INTERNSHIP - BCHO Architects and Associates

As an architectural intern at *BCHO Architects*, I contributed to the *Nature Lab* project, which supports automotive designers by providing inspiration from nature, particularly insects and other species.

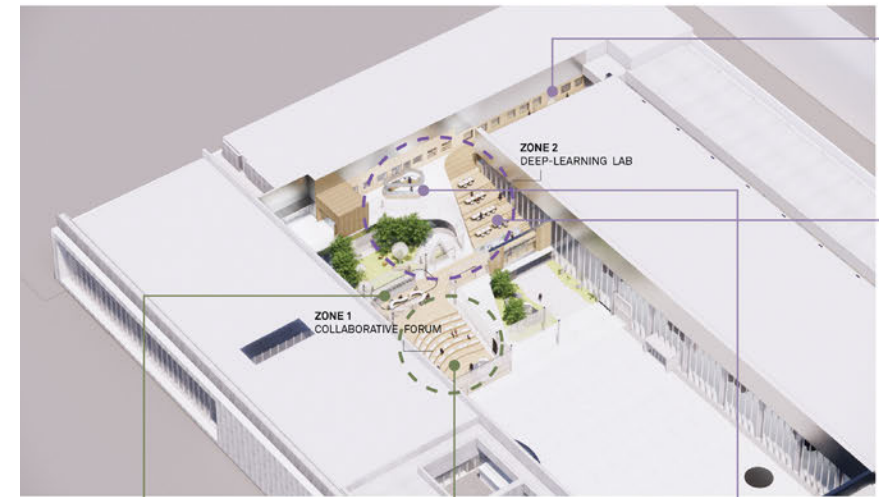
The lab is divided into three zones:

- **Collaborative Forum** – A versatile space for seminars, product evaluations, critiques, and designer meetings. It connects to a meeting room via a sliding wall, fostering interaction and flexibility.
- **Deep-Learning Lab** – A creative space offering access to nature-inspired ideas. Designers can study insect movements in a sketching lounge or examine preserved species at a microscopy station for unique automotive design inspiration.
- **Nature and Future Technology Lab** – A makerspace equipped with 3D printers and robotic tools. Here, designers can integrate natural elements with future technologies in hands-on sessions and interactive meetings.

The seamless integration of these zones fosters creativity and productivity by encouraging designers to draw innovative ideas from nature.



# AXONOMETRIC DRAWING



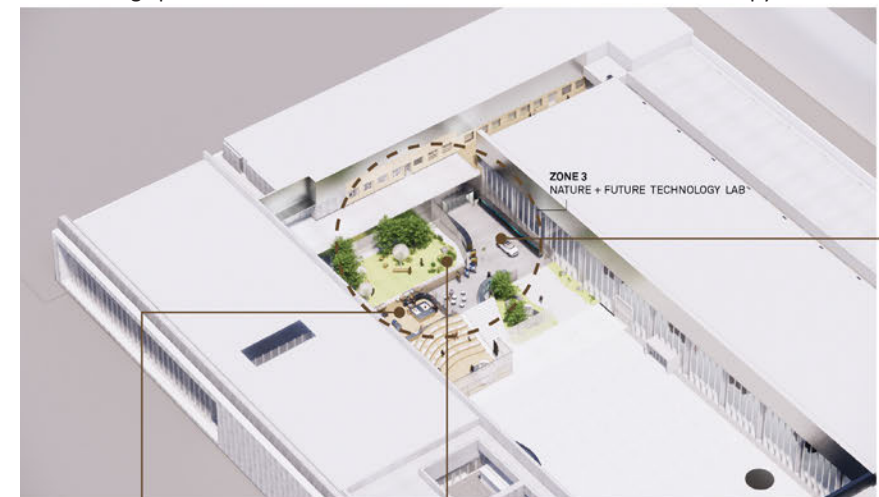
Meeting Space



Forum



Microscopy Station



Nature + Future Technology  
Lounge



Nature + Future Technology  
Garden



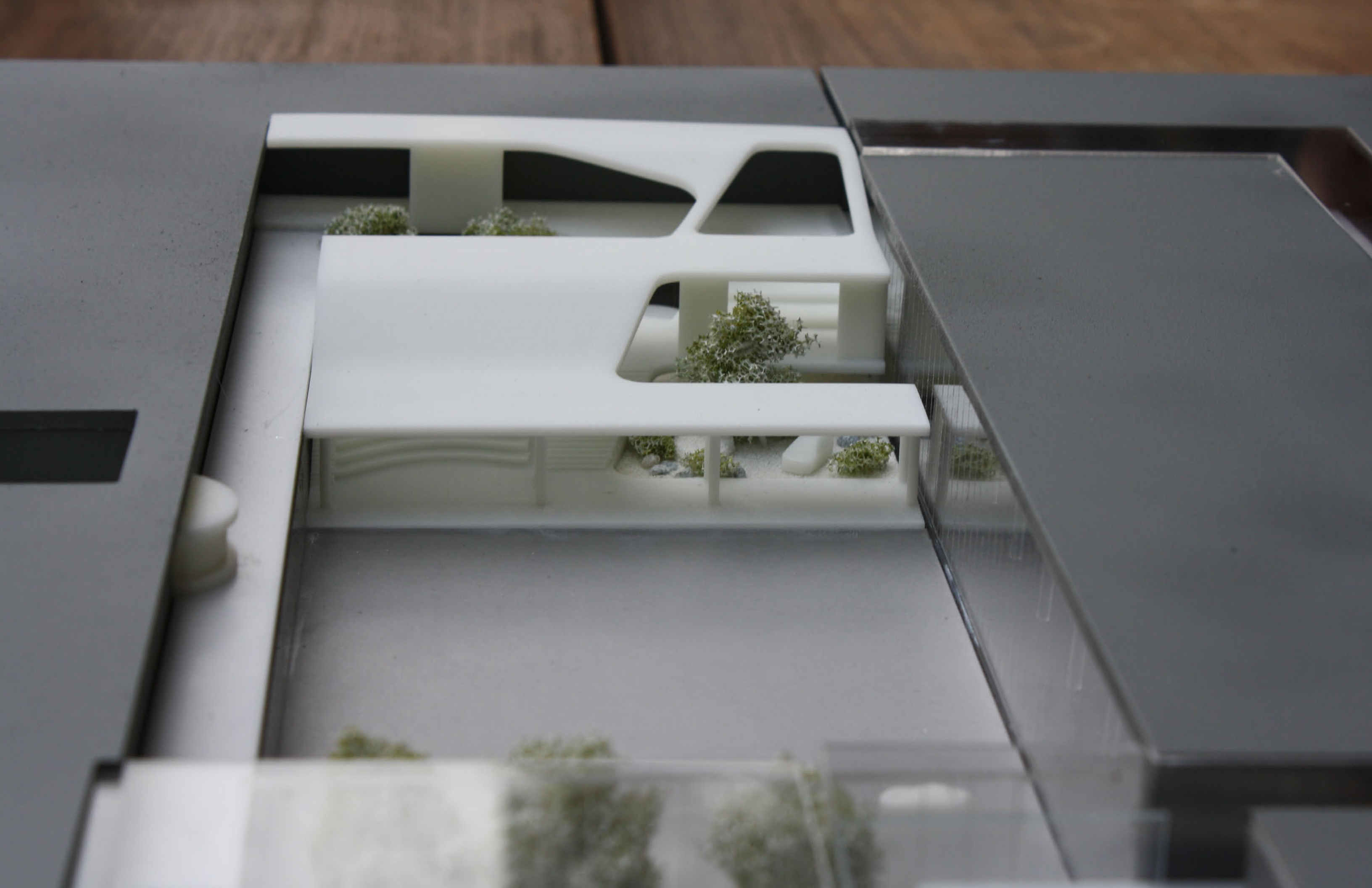
Preserved Specimen Collection



Sketching Lounge



Nature + Future Technology  
Exhibition Lounge





# A SPATIAL COHERENCE : Y

# A Spatial Coherence: Y

2024 FALL HEALTH AND WELLNESS - UNIVERSITY OF ARKANSAS

- 
- 
- 

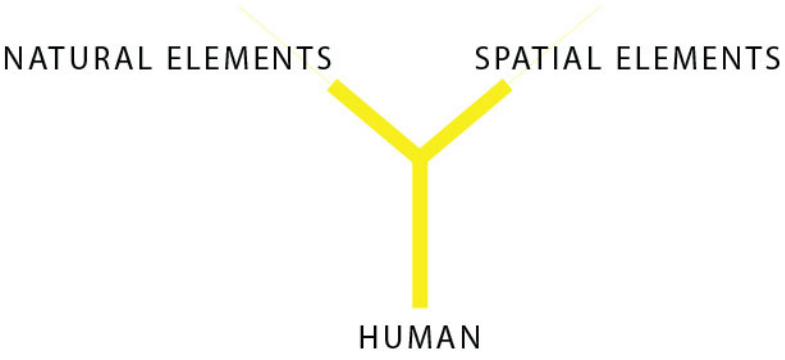
A spatial coherence: Y' is a project redesigning the Community Christian Alternative Academy in Chicago as a space that brings together people, nature, and architecture to encourage interaction and strengthen community engagement. The redesign focuses on connecting indoor and outdoor areas while using sustainable materials to reect a commitment to environmental responsibility. Key features include stair-like seating made from FSC-certied reclaimed wood and plant containers made from recycled plastic sheets. The selection of materials aligns with WELL and LEED standards, supporting wellness and transparency in sourcing. This project creates a functional and inviting environment that fosters a sense of community and supports the Academy's mission in a sustainable way. The seamless integration of these zones fosters creativity and productivity by encouraging designers to draw innovative ideas from nature.

SPATIAL COHERENCE : Y

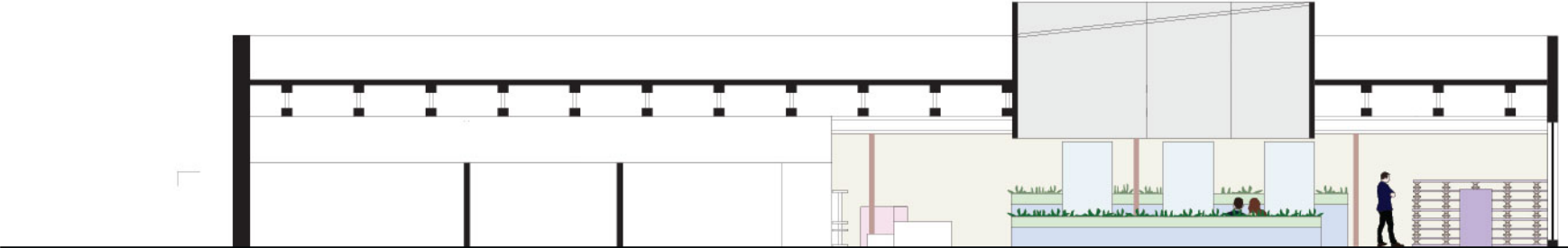
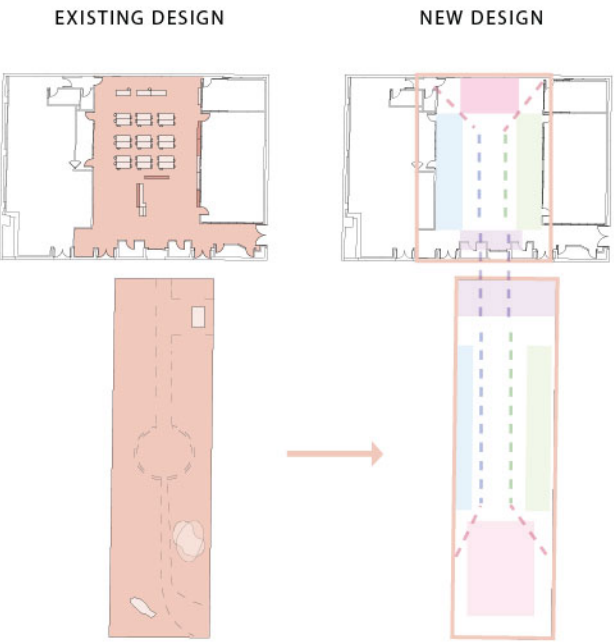
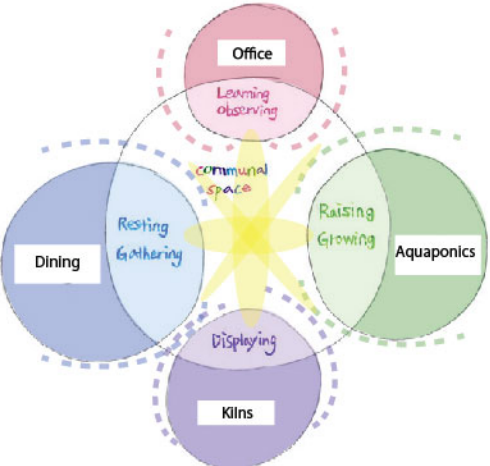
The Spatial Coherence:Y project redesigns both indoor and outdoor spaces at Community Christian Alternative Academy (CCA) in Chicago to allow students and teachers to interact more broadly with one another and with neighbors for community projects.

The overall theme of the project is to create a link between the spatial, human, and natural elements that are infused in space and become an essential source of genuine harmony. The primary focus is on designing spaces that not only function practically but also add richness and life to the environments, allowing students and teachers to interact with and involve each other in space. The programs include a space for a large kiln, a small office space for staff and teachers to monitor the students, a dining area, and a few aquaponics tanks inside the main existing building. Across the alley, additional learning space is designed for students and teachers to collaborate with neighbors on community projects. The concept of the project is to represent the integration of the spatial, human, and natural elements with a tripartite Y symbol, which I intentionally borrowed from the City of Chicago Logo, the Y, representing the Chicago River and its two branches.

The design of each zone - both indoor and outdoor - creates an active, collaborative space. The shape of the furniture, also including the Y symbol, is more deeply embedded in the creation of space. The grand sculptural skylight that pierces the roof in the middle of the open space welcomes the natural elements of light and allows shadow, light, and sound to play with one another. Mirroring the outdoor spaces onto those indoors, creating continuity and consistency throughout the entire space, strengthens the symbol represented by the Y.

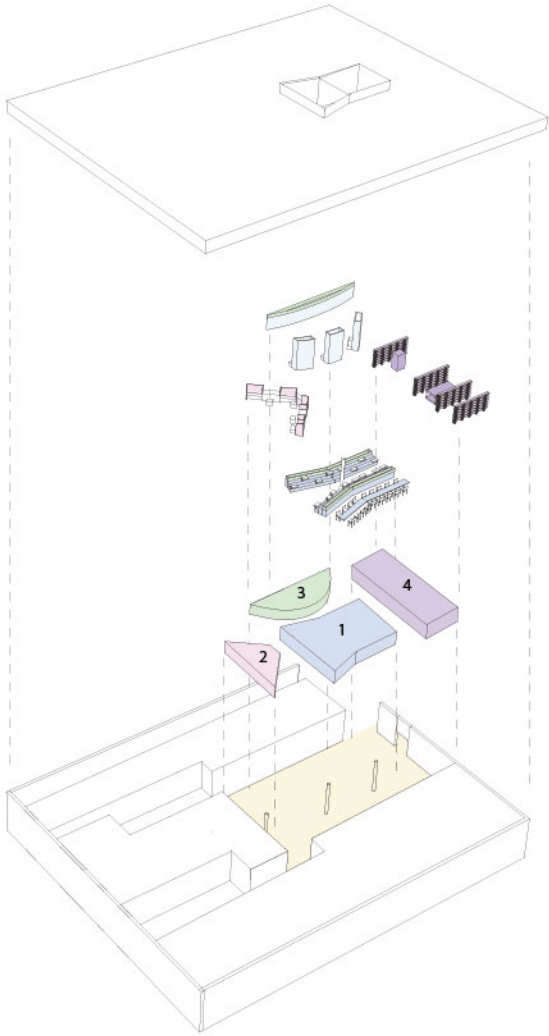


NEW DESIGN PROPOSAL  
RELATED WITH PARTI DIAGRAM



SECTION AA

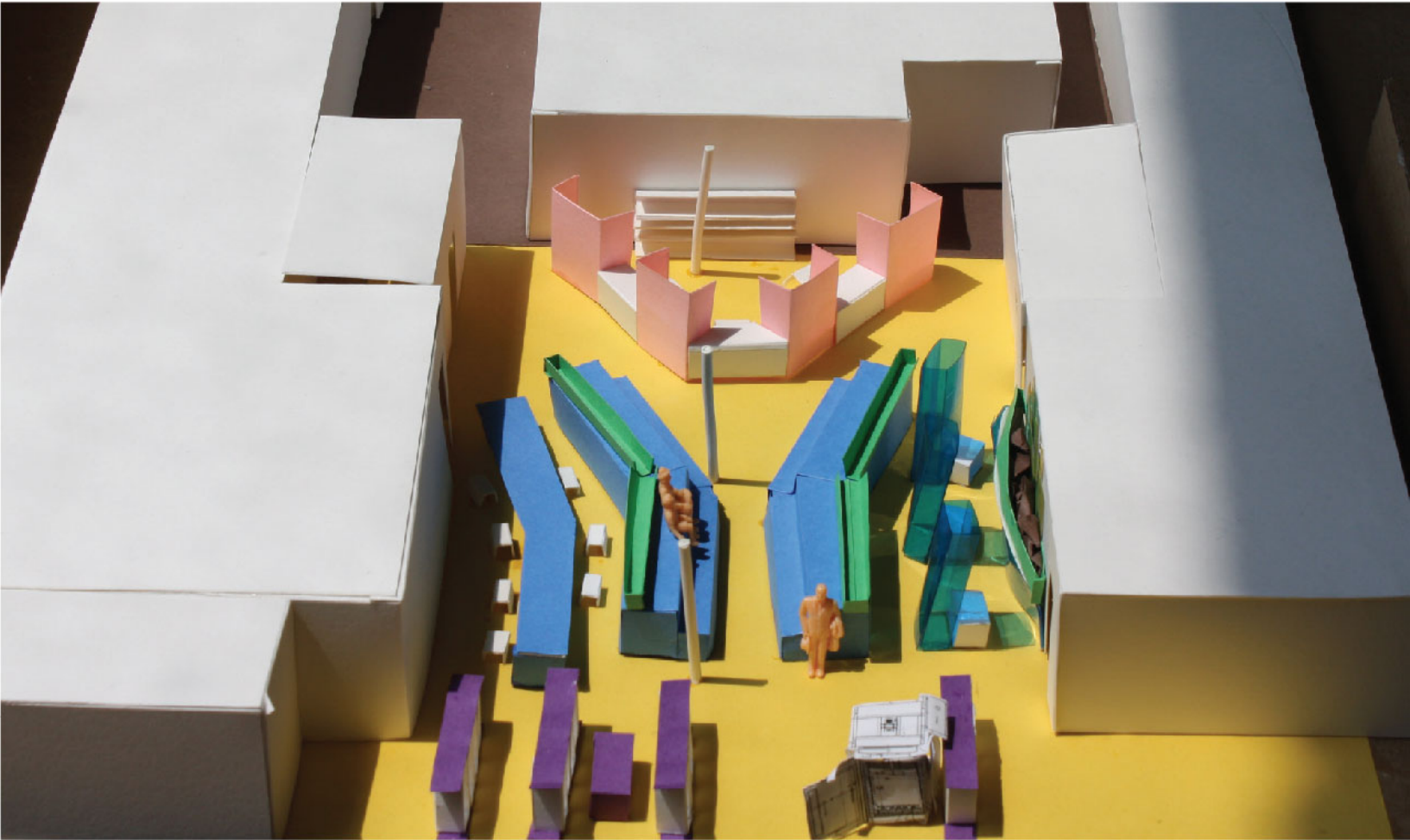
INDOOR PROGRAMS



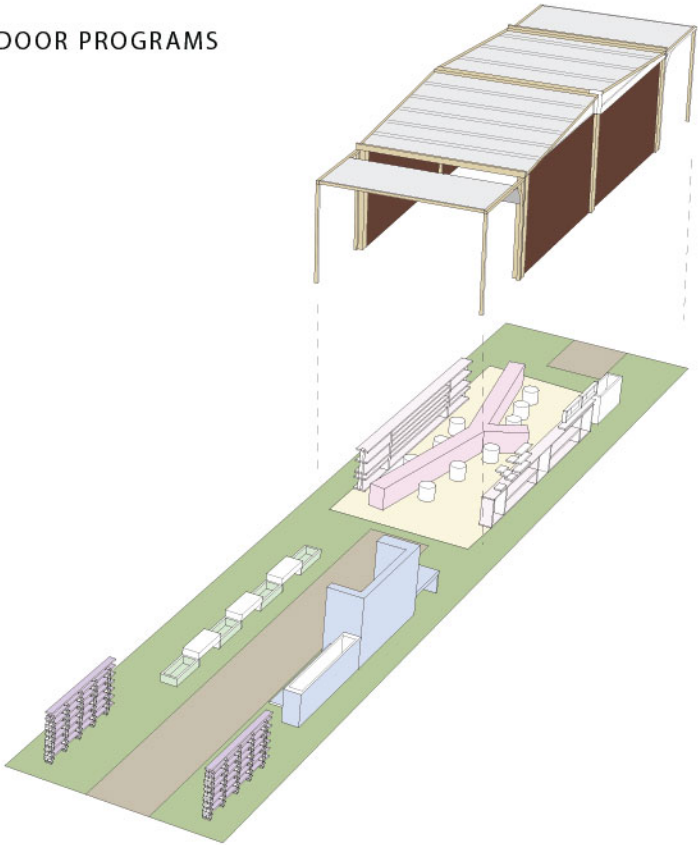
- DINING / RESTING/ GATHERING
- OFFICE / COUNSELING CENTER
- AQUAPONICS
- KILN / DISPLAY SPACE



THE Y SKYLIGHT



OUTDOOR PROGRAMS



- BARBEQUE PLACE
- WORKSHOP PLACE / CLASSROOM
- GARDEN
- DISPLAY SPACE



# BEFORE\_INDOOR



## Exposed Ceiling and Ductwork

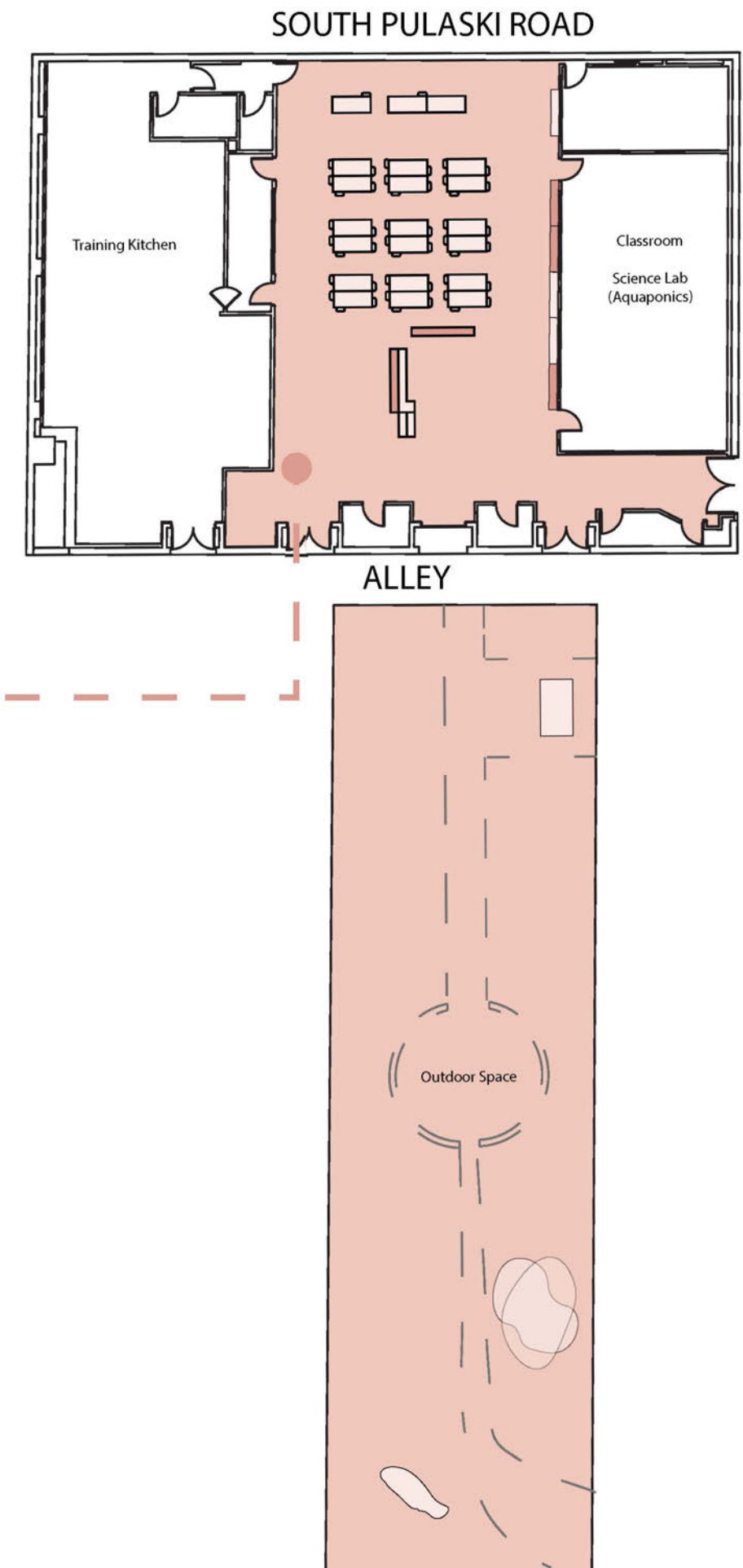
: The ceiling features exposed ducts and structural elements without any integrated ceiling lights. The metal ducts and pipes convey an industrial, raw look and atmosphere, which contrasts with the typical atmosphere and character expected in an educational space.

## Lighting

: The space uses a combination of functional overhead lighting and artificial colored lights (pink and red tones) for plants. However, this combination creates a lack of abundant ambient lighting, with no natural light flowing into the space, which is possibly necessary for productivity for both students and staff members.

## Materials

: The space predominantly uses industrial materials such as exposed metal ducts, wall paintings, and resin flooring, which do not prioritize sustainability. There is a visible absence of natural materials, such as reclaimed wood or recycled composites, that could create a more eco-conscious environment.



# BEFORE\_OUTDOOR



## Planting Stations and Seating Areas

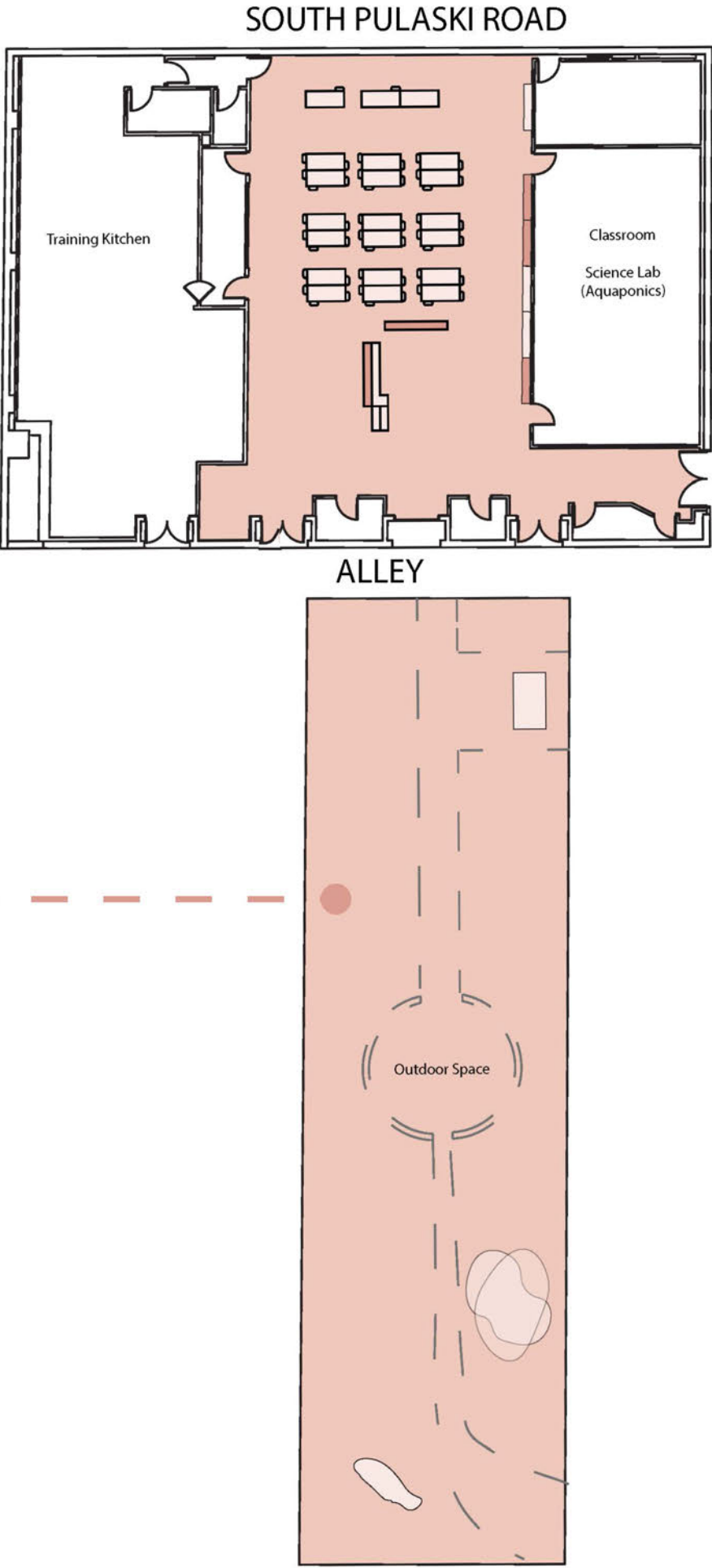
: The planting stations and seating areas, including the firepit, are designed for educational purposes and to promote healthy habits. However, they lack year-round functionality, especially during Chicago’s long, cold winters. As a result, the space is primarily utilized during milder weather or specific events, significantly limiting its overall utility and engagement potential.

## Lighting

: The garden lacks any lighting solutions to extend the usability of space from day to night. The absence of lighting not only limits functionality during darker hours but also creates safety concerns for those using the space.

## Materials

: The use of materials throughout the garden, such as concrete and metal fencing, reflects a lack of environmentally friendly design. Additionally, these materials create an industrial atmosphere that contrasts with the intended purpose of the spaces as an educational environment.



# AFTER\_INDOOR

## MATERIAL SELECTION

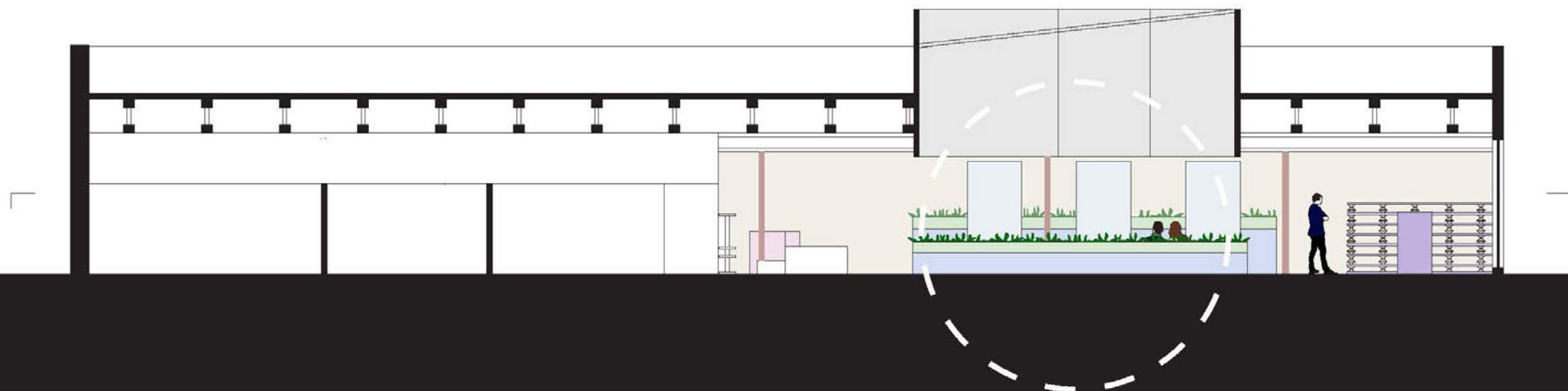
- 1 Side Table  
:Tangent recycled  
plastic lumber



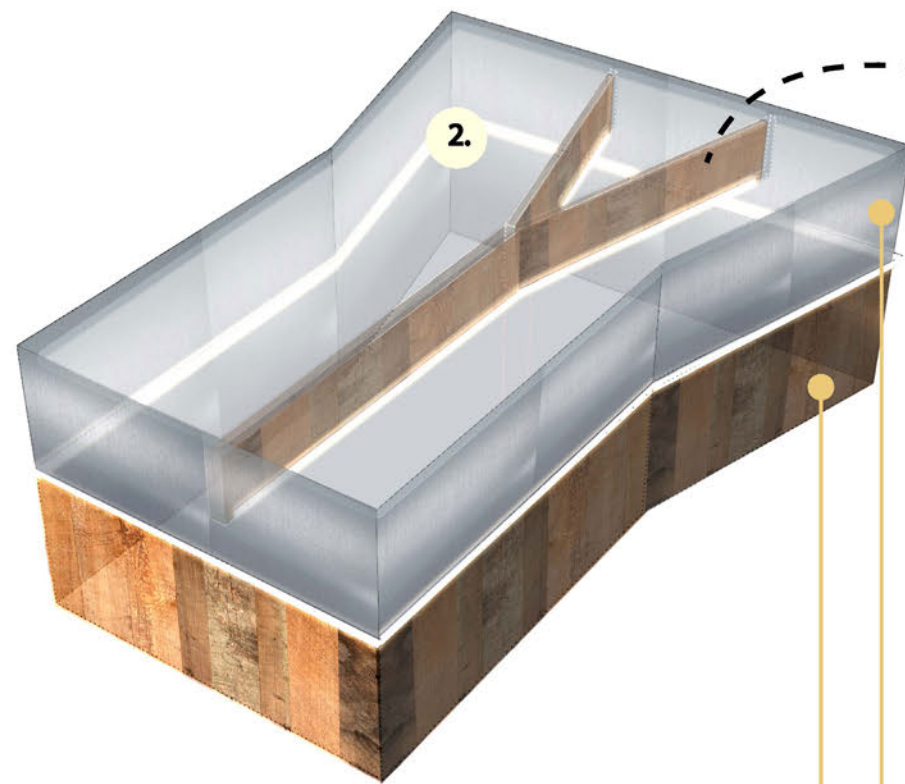
- 2 Plant Container  
:Recycled plastic sheet



- 3 Stair-like Seating  
:FSC reclaimed wood



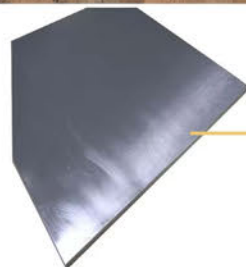
SECTION AA



#### MATERIAL SELECTION

Extrusion of the tube - Bottom  
:FSC Reclaimed Wood

Extrusion of the tube - Top  
:Recycable Highly Reflective Aluminum



1.

Staircase Under lighting  
:UL Listed LED Strip Light

Color temperature - 1800K to 3000K (soft to neutral white) for comfortable and glare-free illumination  
Diffuser - Features a frosted acrylic diffuser for even light distribution and visual comfort  
UL Listed - Safety and quality standards are fulfilled



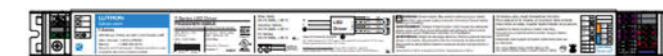
2.

Ceiling lighting  
:Tunable LED Lighting Fixtures

Color temperature - Tunable from 1500K to 6500K, simulating natural daylight cycles and support WELL L03 Circadian Lighting Design

Green Guard Certified - Low-VOC materials support improved indoor air quality, meeting WELL Standards for environmental health

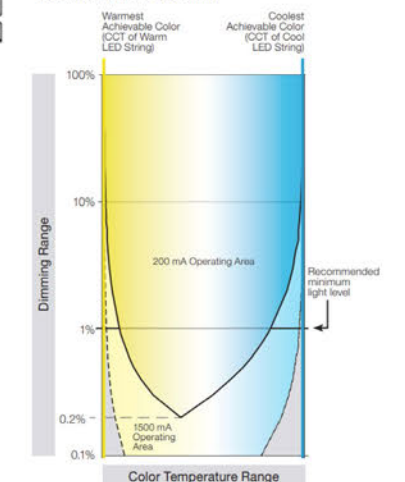
UL Listed - Safety and quality standards are ensured with WELL Standards



Case Type W

1.18 in (30 mm) W x 0.83 in (21.0 mm) H x 16.06 in (408 mm) L

#### Tunable White Capability



The grand sculptural skylight that pierces the roof in the middle of the open space welcomes the natural elements of light and allows shadow, light and sound to play with one another

# AFTER\_INDOOR & OUTDOOR CONNECTION

BEFORE



AFTER



- 1. Bike Storage
- 2. Sprout & Grow
- 3. Grill Area
- 4. Seating Area
- 5. Learning Hub



## Bike Storage

**V04 Facilities for Active Occupants:** Bike storage supports active commuting by providing secure and convenient facilities, encouraging cycling, and promoting occupant activities.

**V09 Physical Activity Promotion:** Bike storage encourages daily movement by making cycling an easy and convenient option for students and staff. It supports sustainable commuting while helping everyone stay active as part of their everyday routine.

## Sprout & Grow Zone

**V01 Active Buildings and Communities:** The Sprout & Grow zone promotes active engagement with nature, supporting both physical activity and mental well-being. The integration of a winter planting cold frame provides year-round functionality, protecting plants during Chicago's severe winters while enabling continuous planting and harvesting activities.

**V09 Physical Activity Promotion:** The Sprout & Grow zone strengthens physical engagement through planting, watering, and harvesting activities. With the addition of the cold frame, the zone fosters a sustainable and healthy community by extending the usability of planting areas, ensuring a consistent connection to nature, even in harsh winter conditions.

## Grill Area

**V01 Active Buildings and Communities:** The grill area offers active outdoor interaction and movement as users navigate around the area for grilling and communal dining.

**V04 Facilities for Active Occupants:** The grill area provides a dedicated space for gathering and facilitates communal events, encouraging informal movement and engagement outside the classroom.

## Seating Area

**V01 Active Buildings and Communities:** The seating area offers flexible seating options, encouraging occupants to rest, connect, and interact within the space, fostering a sense of community. The brick partition features LED lighting for warmth and visibility, while linear floor lighting under the seating enhances safety and encourages use from day to night.

**V09 Physical Activity Promotion:** The Y-shaped seating layout smoothly transitions from indoors to outdoors, encouraging natural movement and physical activity. The integration of lighting elements further strengthens the connection between indoor and outdoor spaces, supporting extended use and creating a welcoming environment throughout the day and evening.

## Learning Hub

**V01 Active Buildings and Communities:** The learning hub provides a multi-functional space that fosters active learning and collaboration, encouraging movement within and between zones.

**V09 Physical Activity Promotion:** The space incorporates features such as standing desks for crafting, a Y-shaped desk with seating for group learning and collaboration, and hanging shelves for display and storage. These elements encourage active engagement, group learning, and seamless collaborative movement within the environment.