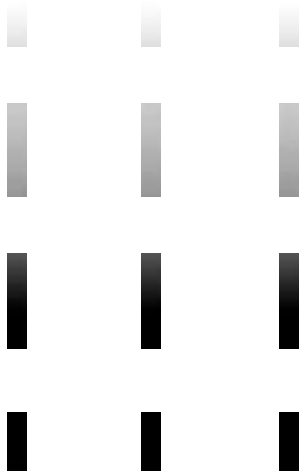


THE NEW ERA OF  
CONSTRUCTION  
DRAFTING & DESIGN

“Design must reflect the practical and  
aesthetic in business but above all...  
good design must primarily serve people.”

-Thomas J. Watson

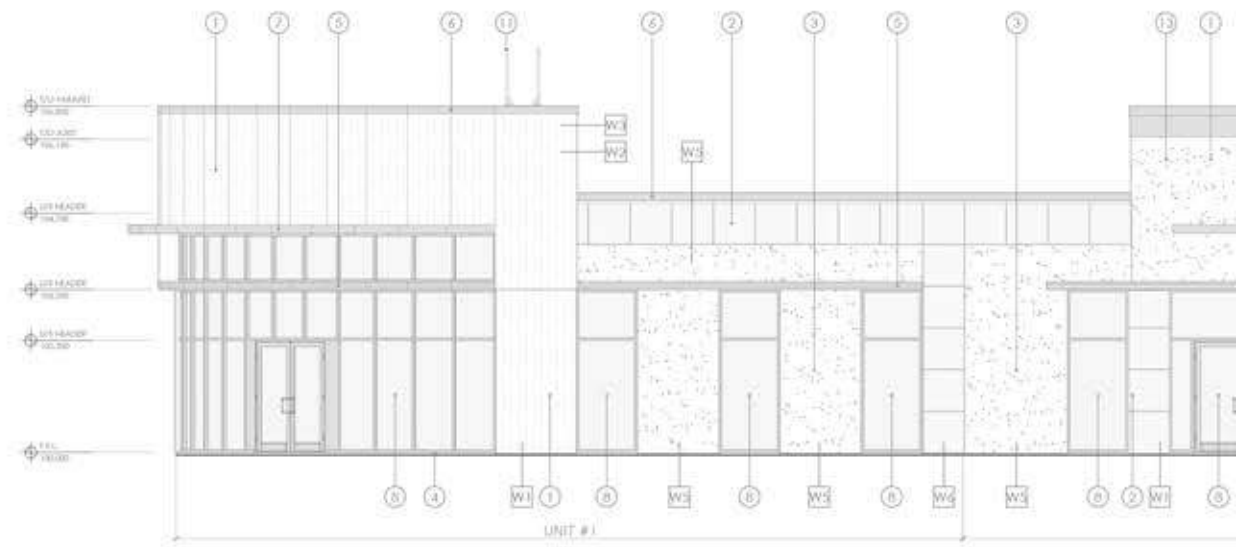
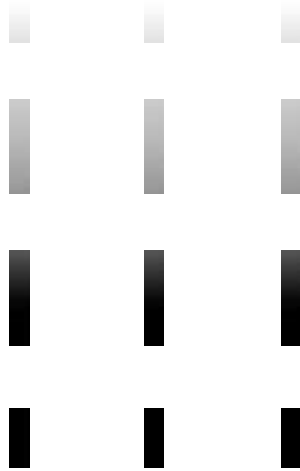
E N S



CHRISTOPHER  
ROZYCKI



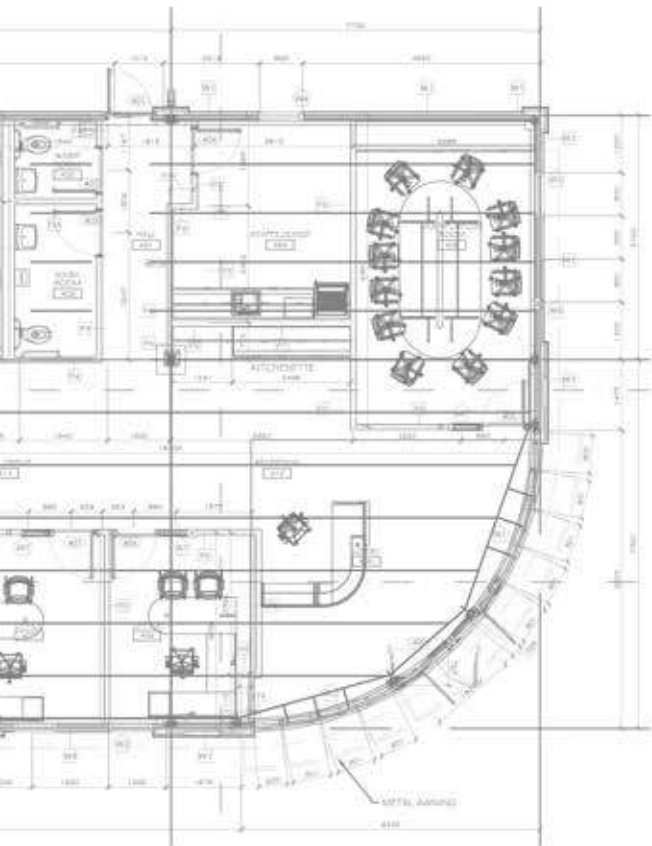
# ENS



## ENS DESIGN GROUP, LLC FOUNDED IN 2021

Professional experience for over 20+ years in the construction, manufacturing, engineering, and design industries. Fully remote and specializing in the latest technology, advanced techniques, focused on every detail, incorporating our clients vision, and providing exceptional drafting and design services.

6003 CONNIE AVENUE, LEHIGH, FLORIDA  
SERVING THE US | CANADA | GLOBALLY  
PHONE: 850-462-2912



# CONCEPT + DESIGN DEVELOPMENT + CONSTRUCTION DOCUMENTS +

The client had a desire to maximize the space on a smaller site development. The city requested mixed-use due to it's central downtown location. ENS Design Group was able to present the city with a concept design and permit/construction drawings



## ► PROJECT: FATE, TX MIXED-USE COMMERCIAL & RESIDENTIAL DEVELOPMENT

Preliminary design of an 11 building complex residential & commercial site development. 55 residential units totaling 56,187 square feet and 5,952 square feet of commercial space. Buildings boast a rooftop terrazo along with ample visitor parking.





STANDARD 3D RENDERING



VS. AI RENDERING

# REALISTIC RENDERINGS

Using recent technological advances with the latest AI applications helps take traditional rendering to a new level of photo-realism. Future AI models will eventually incorporate Augmented Reality where the client can choose their product and virtually add it to their desired room. A process that once took days to create, model, and render, now takes only a few minutes







# ▼ FACADE RENDERING

EXTERIOR DESIGN  
WITH MULTIPLE OPTIONS

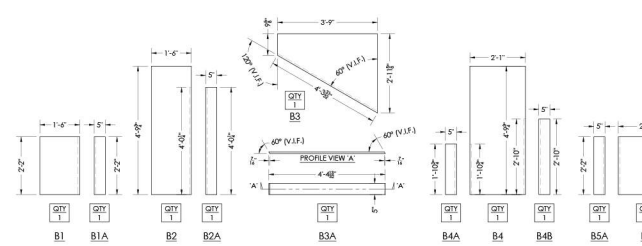
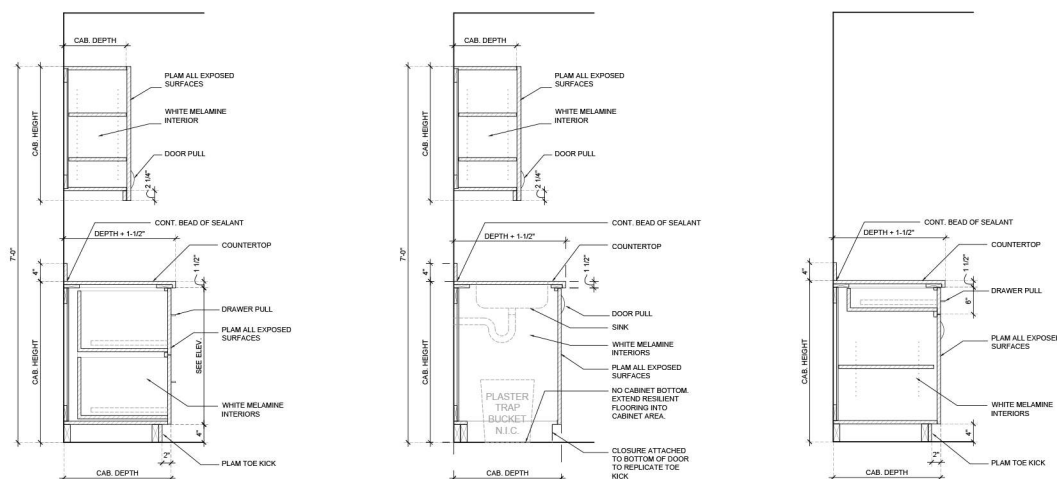
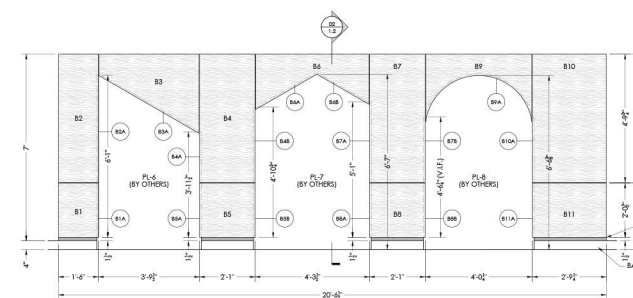
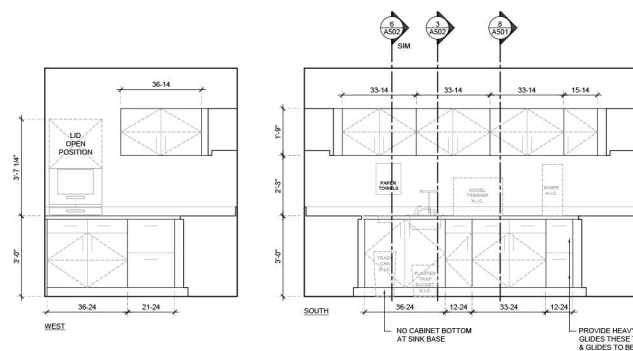
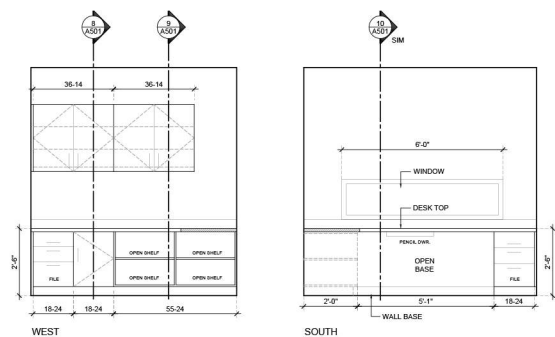
The client wanted to view varying options on an exiting home in Germany. A moder villa with differing build-out options and windows



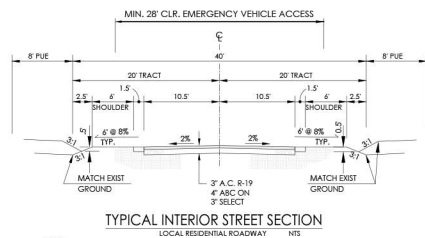
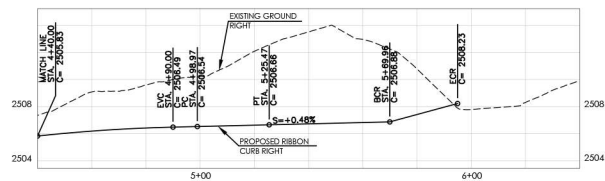
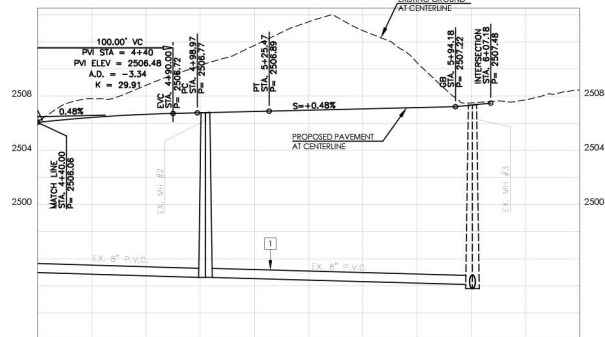
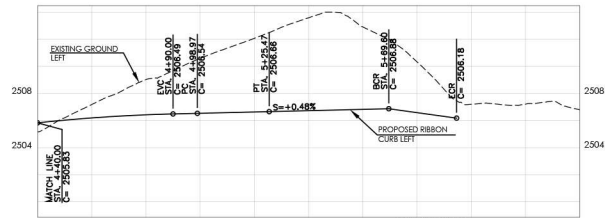
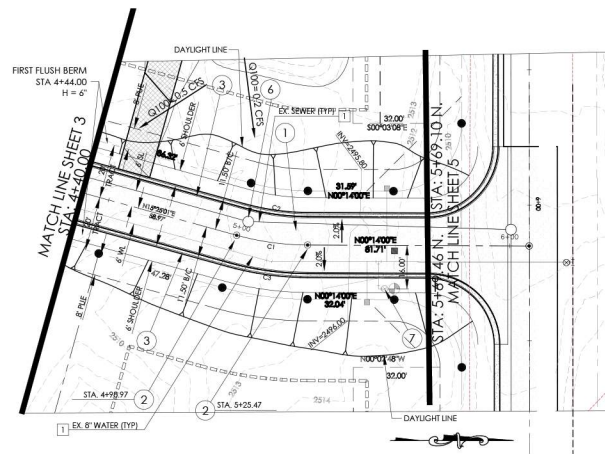
# EN S

- + INTERIOR ELEVATIONS
- + MILLWORK DRAWINGS
- + SHOP DRAWINGS
- + CUT LISTS

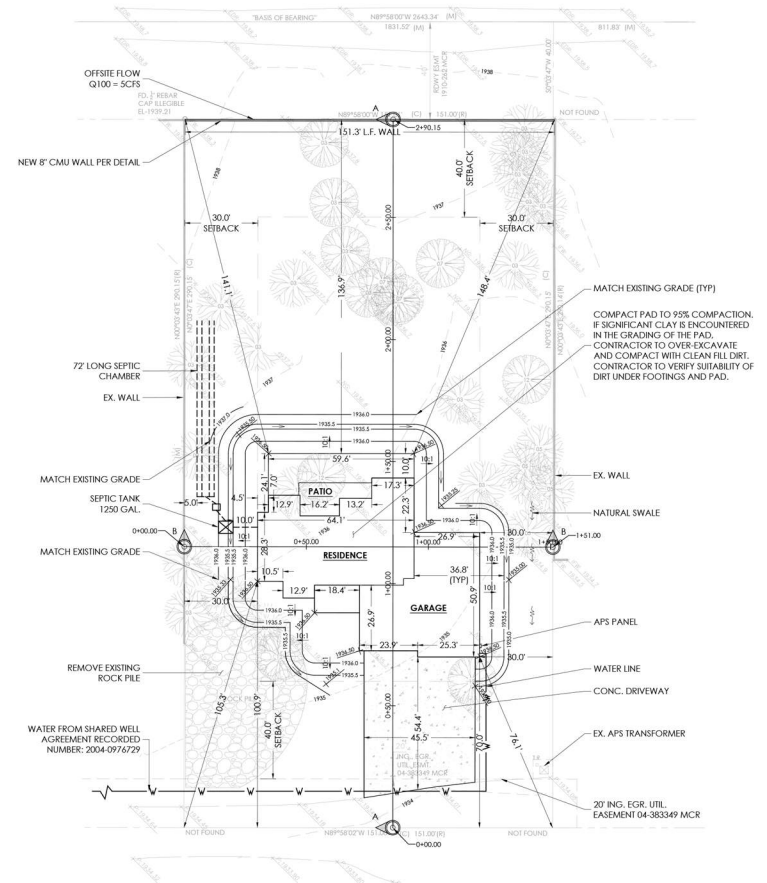
Interior elevations and shop drawings allow the manufacturer or builder to have a sense of direction. They are a guide to be used for visualizing the finished product and provide the necessary information to build







NOTE:  
1. 6" SHOULDER SHALL BE CONSTRUCTED WITH CLEAN NATIVE TOPSOIL WHICH IS FREE OF ROCKS, DEBRIS OR HEAVY CLAYS AND BE COMPACTED TO A MINIMUM OF 90% OF THE MAXIMUM DENSITY.  
2. SOILS REPORT SHALL BE CONSULTED BY CONTRACTOR FOR SOIL CONDITIONS AND PAYMENT STRUCTURE PRIOR TO CONSTRUCTION

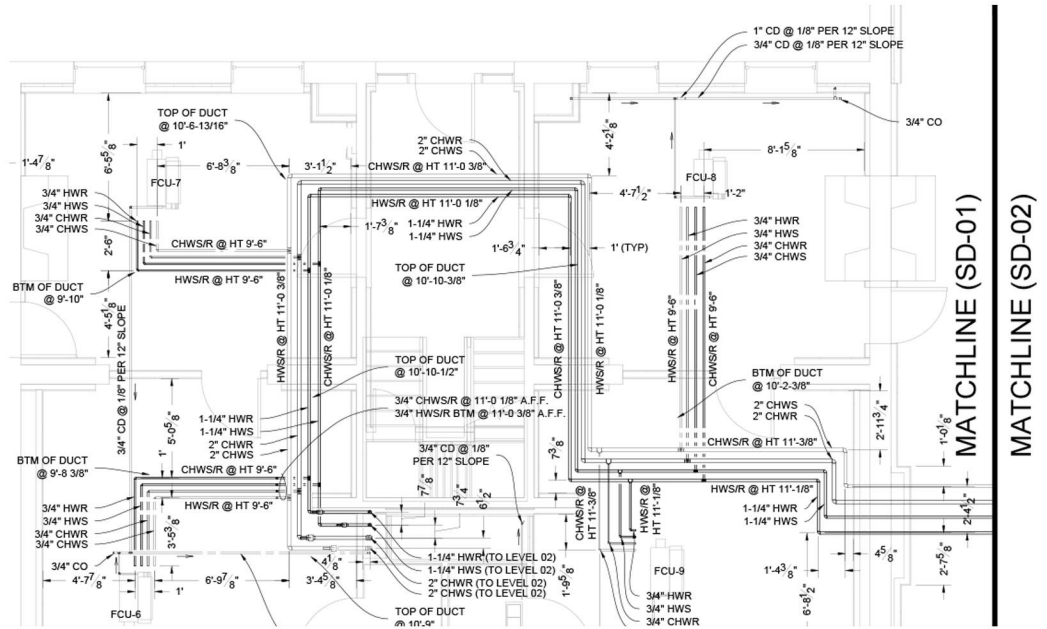
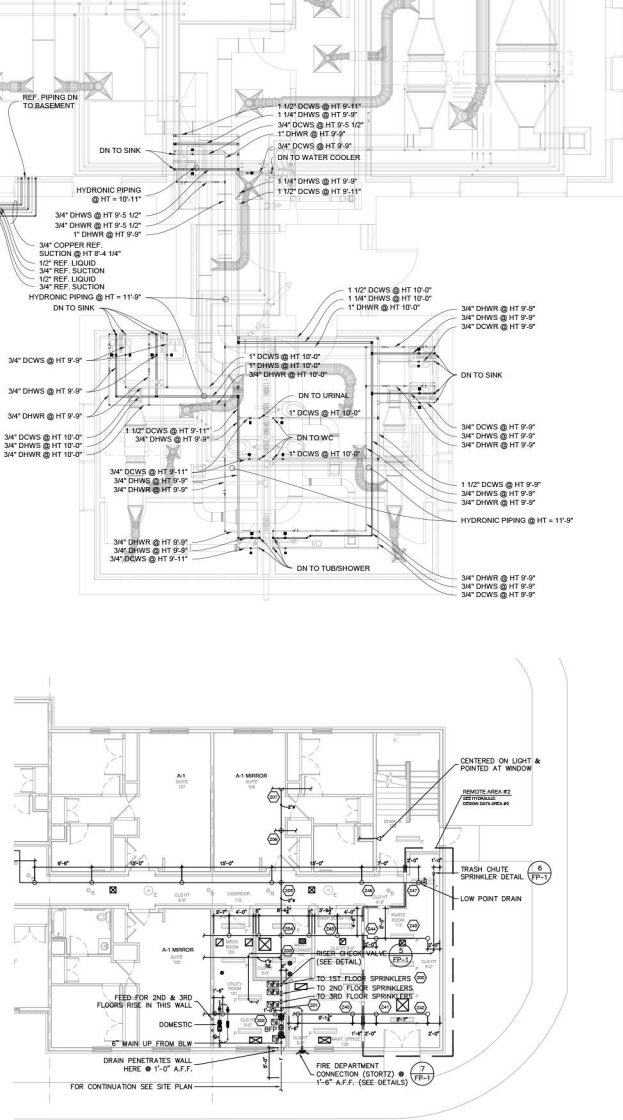


# CIVIL GRADING & DRAINAGE DESIGN

Commercial +  
Residential +  
Roadwork +

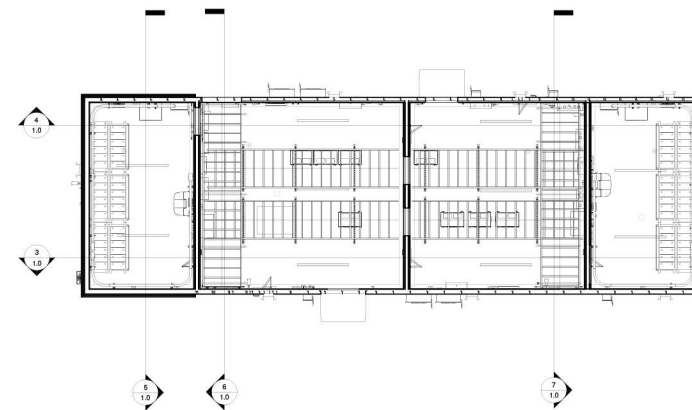
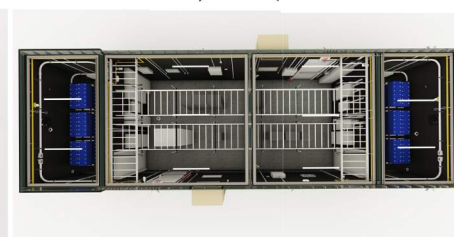
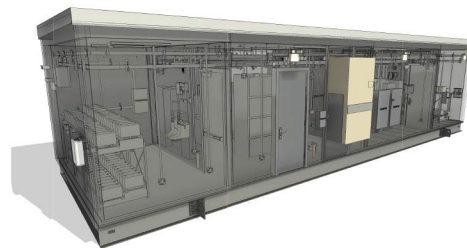
Civil drafting services that provide comprehensive quantities reports, proper site grading & drainage, sanitary & water lines, & accurate site sections.

# MEP | HVAC | FIRE SHOP & COORDINATION



## UTILIZATION OF BIM SOFTWARE TO ENSURE PRECISION & ACCURACY

The backbone to a great building starts with installation of Mechanical, Electrical, and Plumbing products. Shop drawings ensure correct installation, sizing, location, and type of product being installed. Coordination drawings help ensure the layout will work without conflict.







ENS Design Group works closely with Licensed Architects & Engineers to ensure accuracy, building code application, adherence to industry standards, remaining within budget, meeting scheduled deadlines, and a drawing that is to the best of qualities,

Living and working remotely has its challenges within the government & infrastructure, but we are dedicated to serving our local community to the best ability. A portion of our profits are poured into the local community & your decision to partner with us has a lasting impact.

SERVING THE US & CANADA  
REMOTE & ONLINE IN GUATEMALA  
PHONE: 850-462-2912