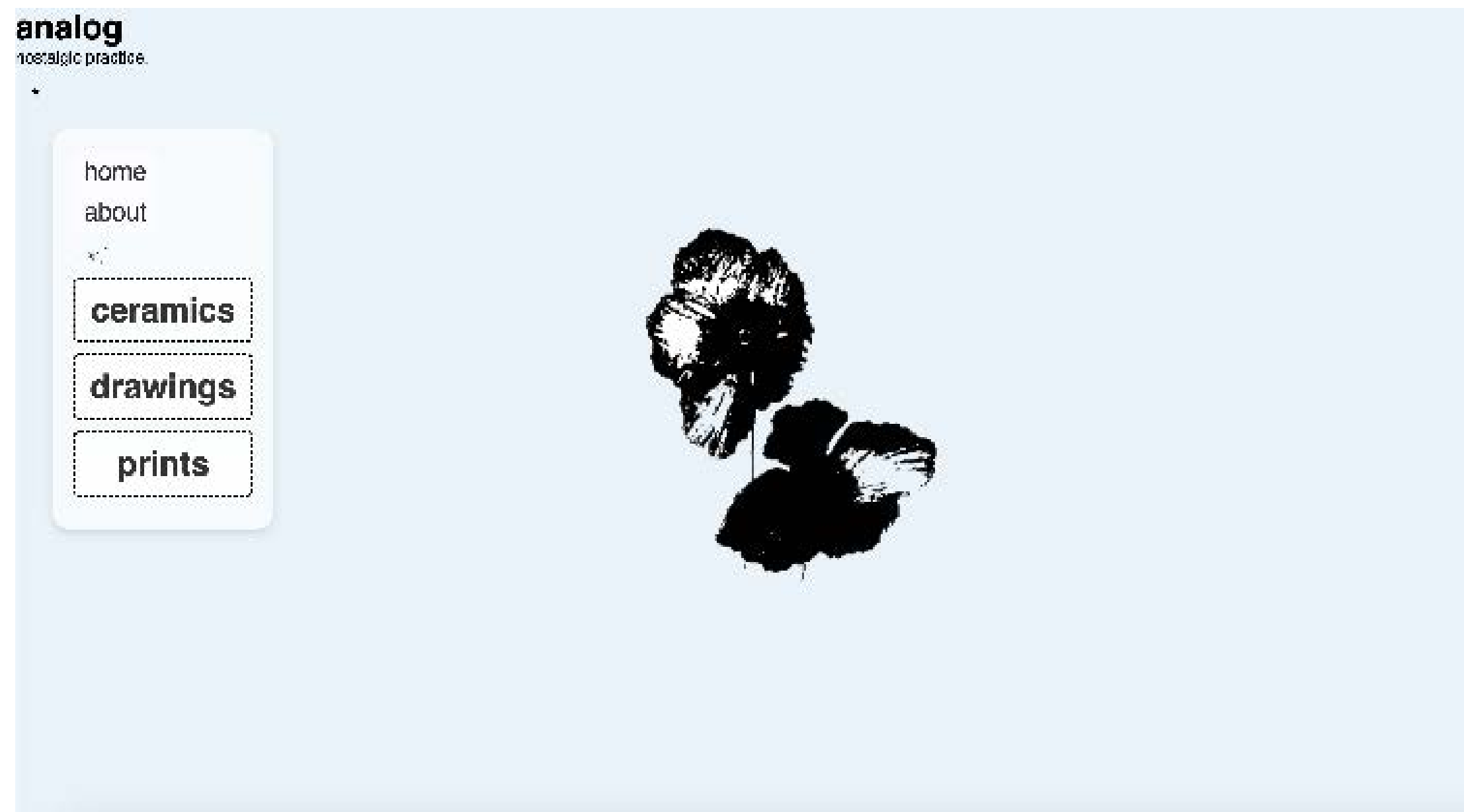




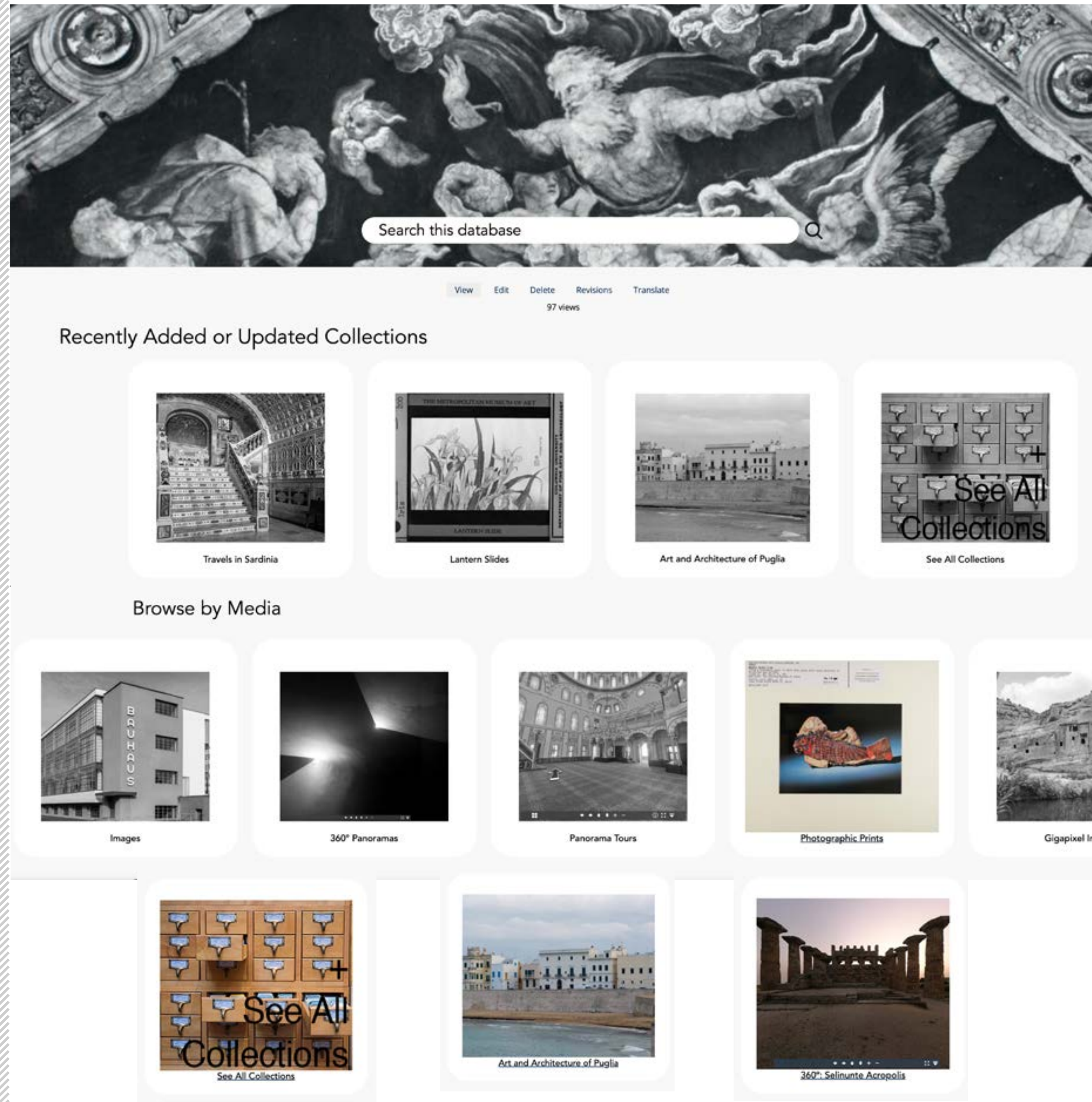
website design designed on cargo/css/html



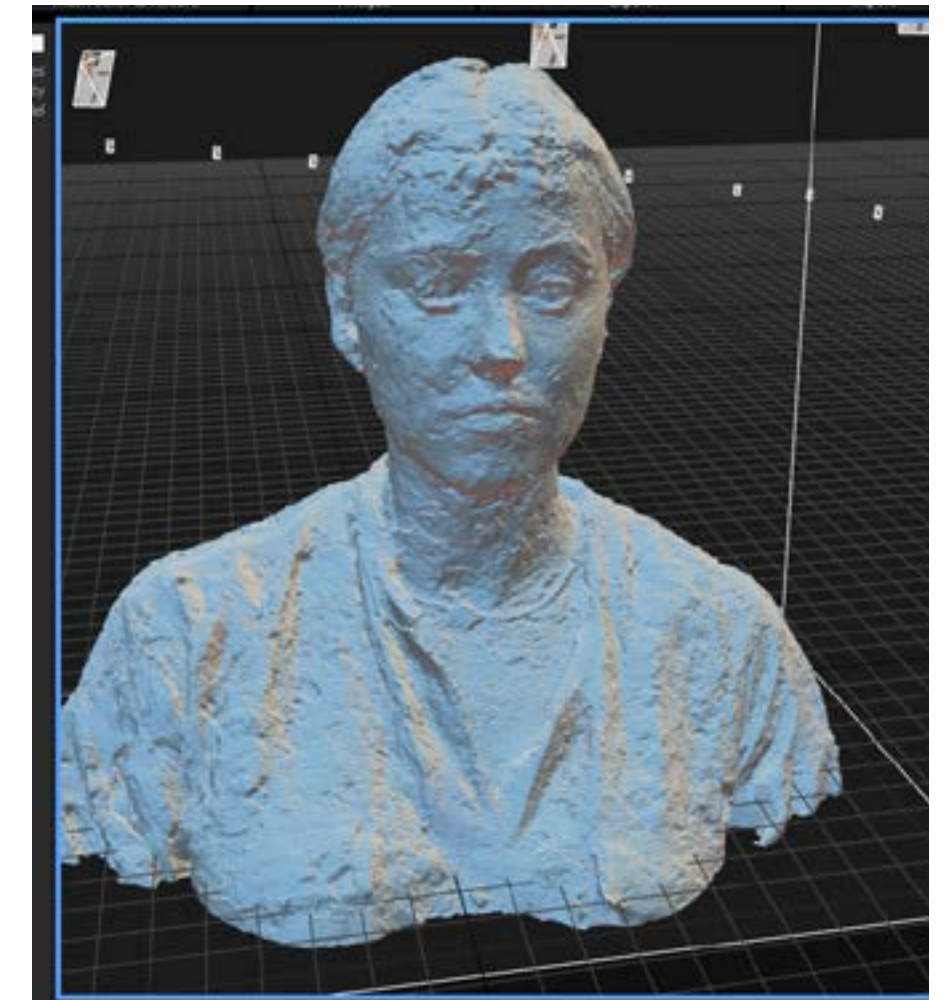
business card asset designed on photoshop



deployed with javascript, html, css on a neocities cms.



mcid restructuring and redesign. designed in figma, deployed with javascript, html, css on a drupal cms.

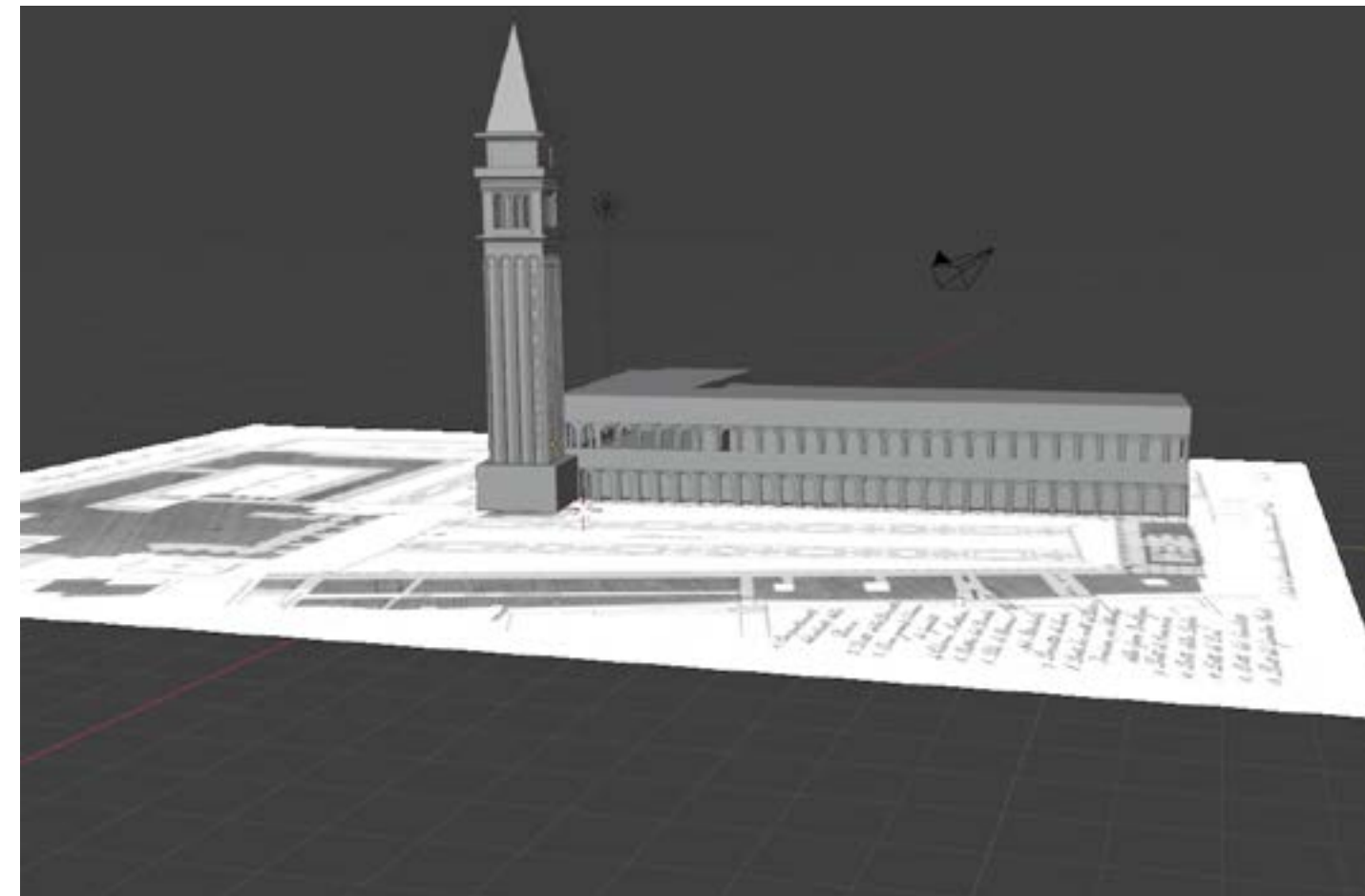


photogrammetry rendering using unreal capture in order to create a metahuman.

an aedicule built for a pantheon unreal project. modeled in blender.



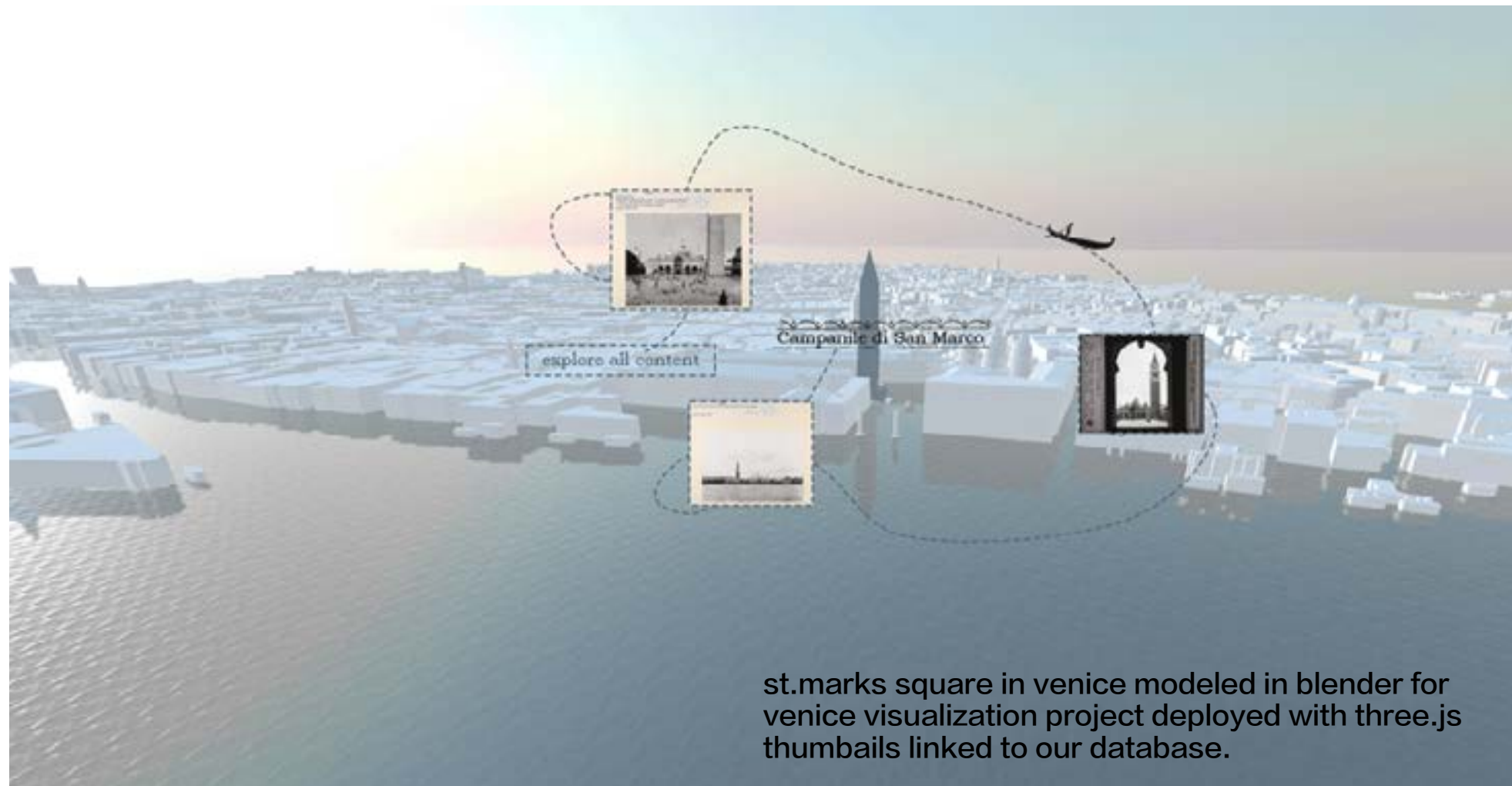
villa savoye unreal project. textured with substance painter, modeled in blender, deployed with unreal engine.



st.marks square in venice modeled in blender for venice visualization project deployed with three.js

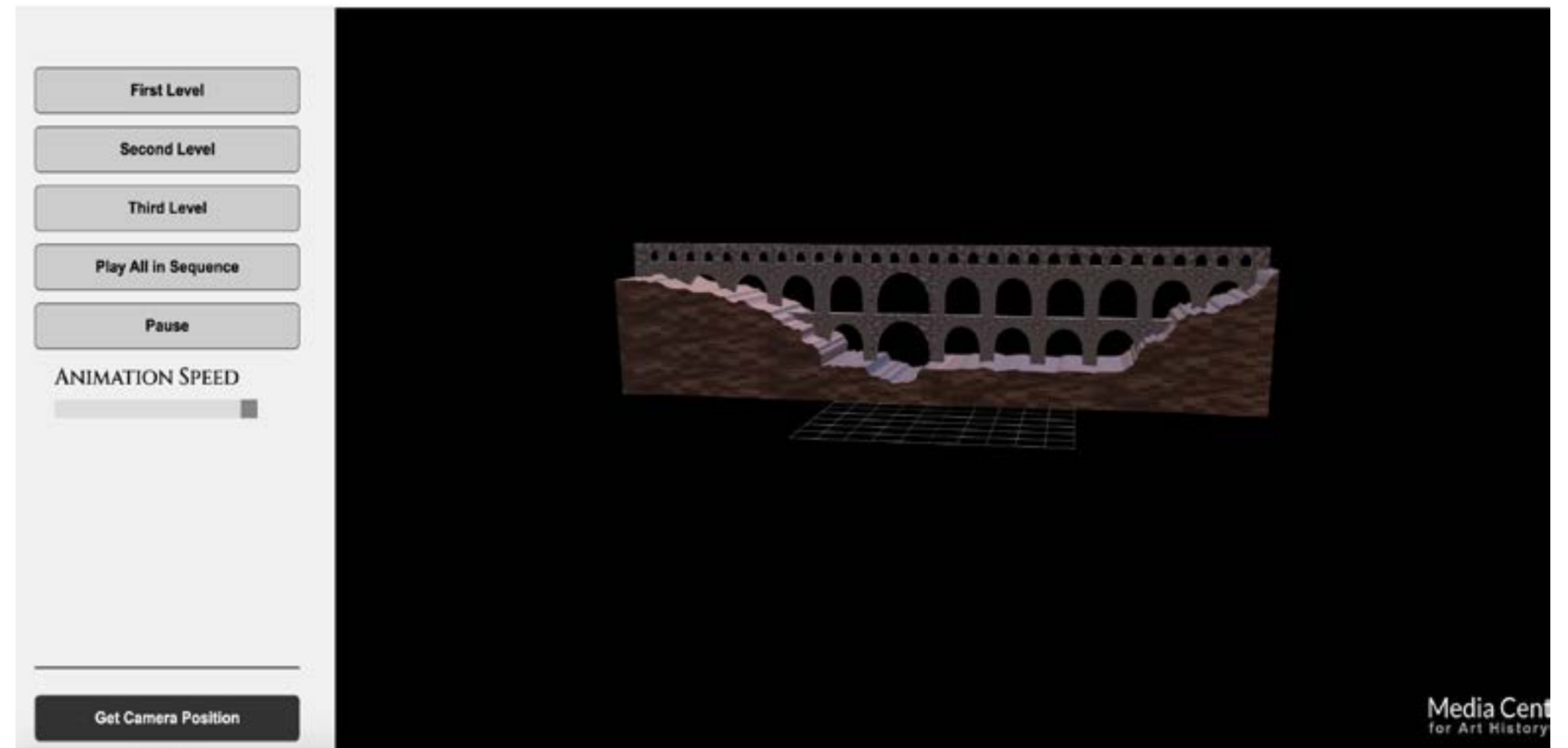


an acanthus leaf modeled in blender for pantheon unreal project.

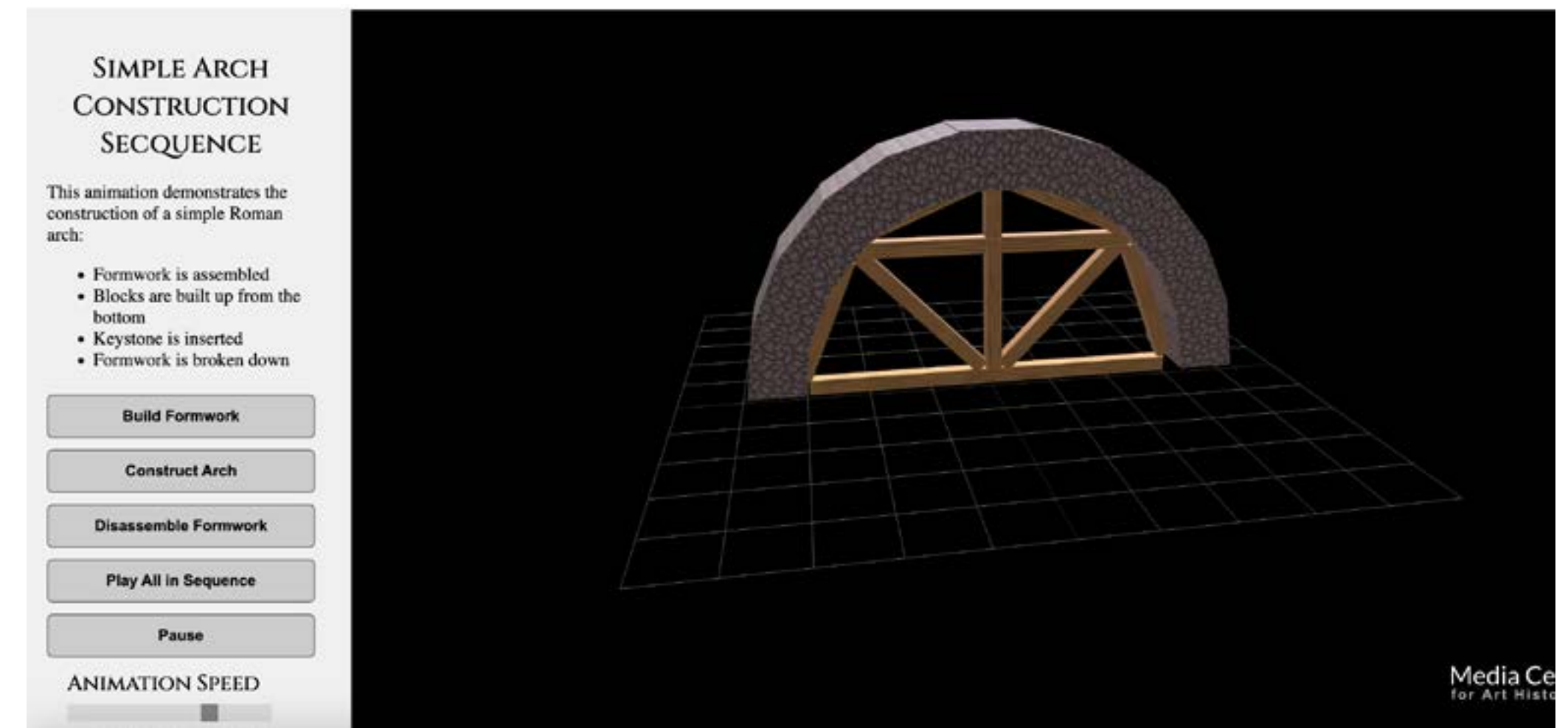


st.marks square in venice modeled in blender for venice visualization project deployed with three.js thumbnails linked to our database.

THE ROMAN ART OF ENGINEERING: TRADITIONS OF PLANNING, CONSTRUCTION, AND INNOVATION



villa savoye ui design



roman engineering aqueduct modeled and animated in blender, deployed using three.js