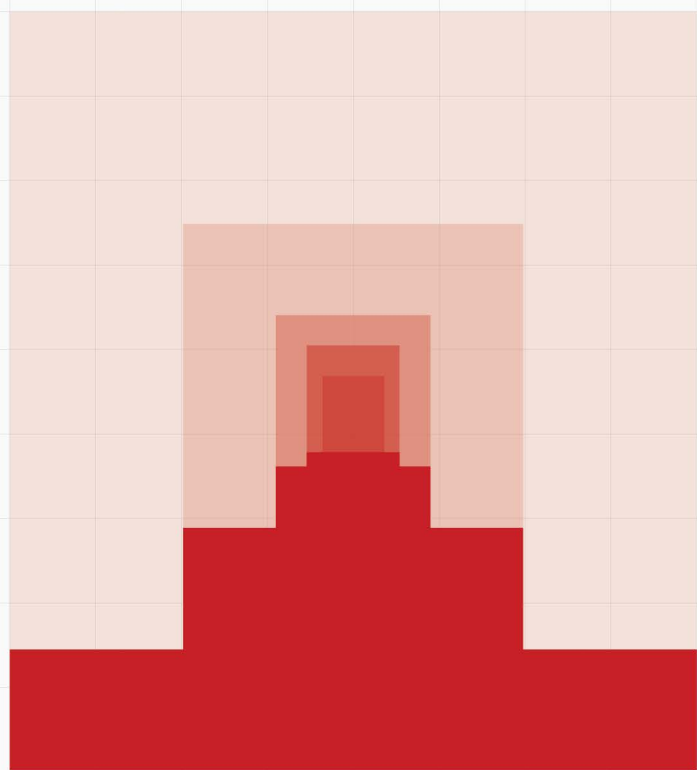


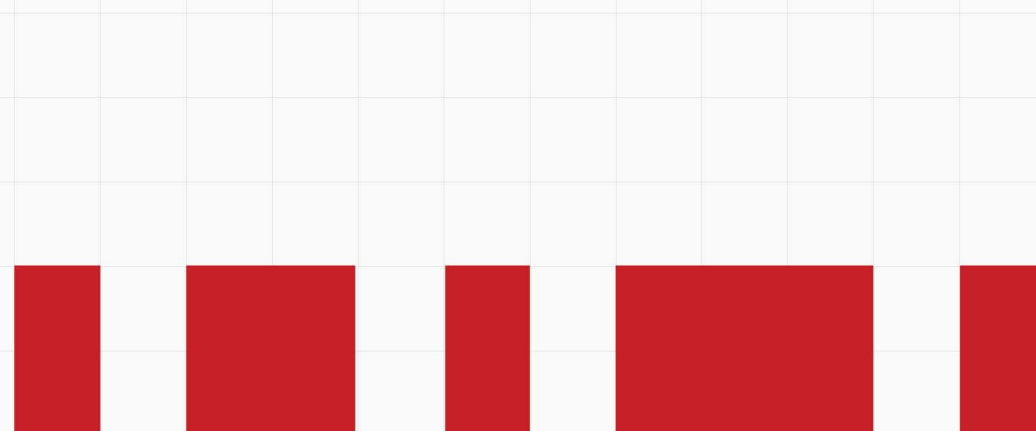
# Devin Keenan

## Academic Portfolio

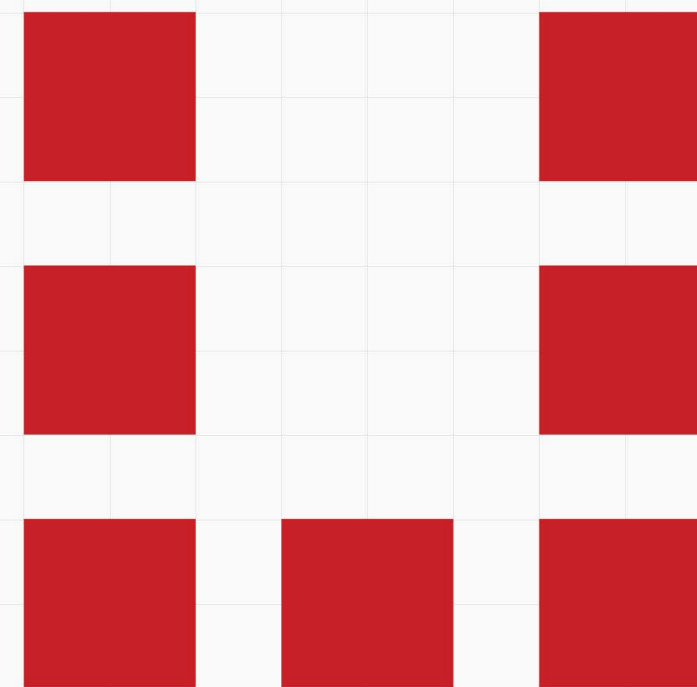
University of Illinois at Chicago  
Illinois Institute of Technology



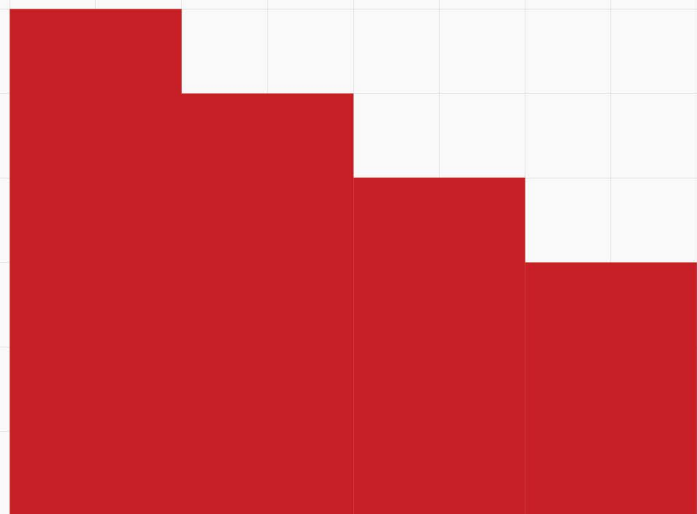
01.



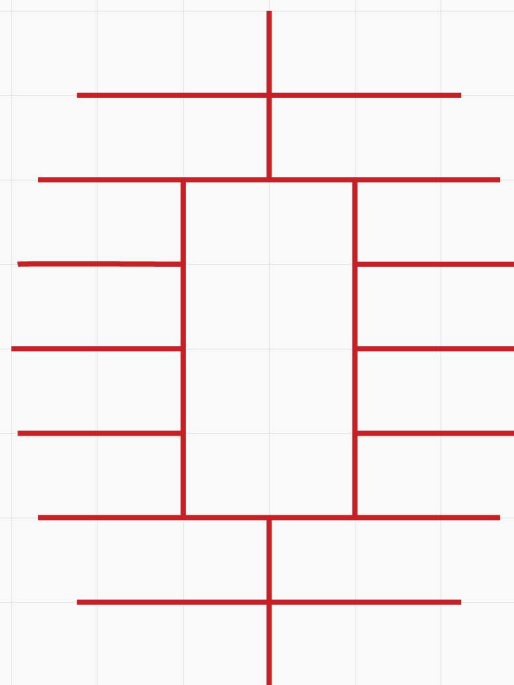
02.



03.



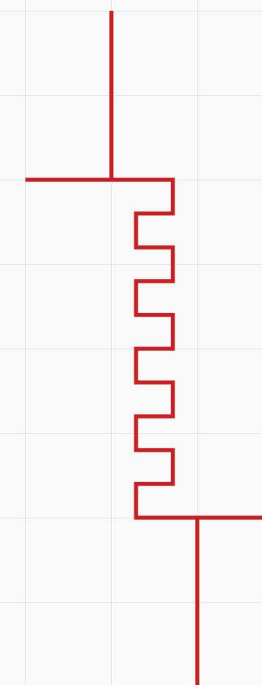
04.



05.



06.



07.

# 01.

## SOCIETY OF ROOMS

**SPRING 2022**

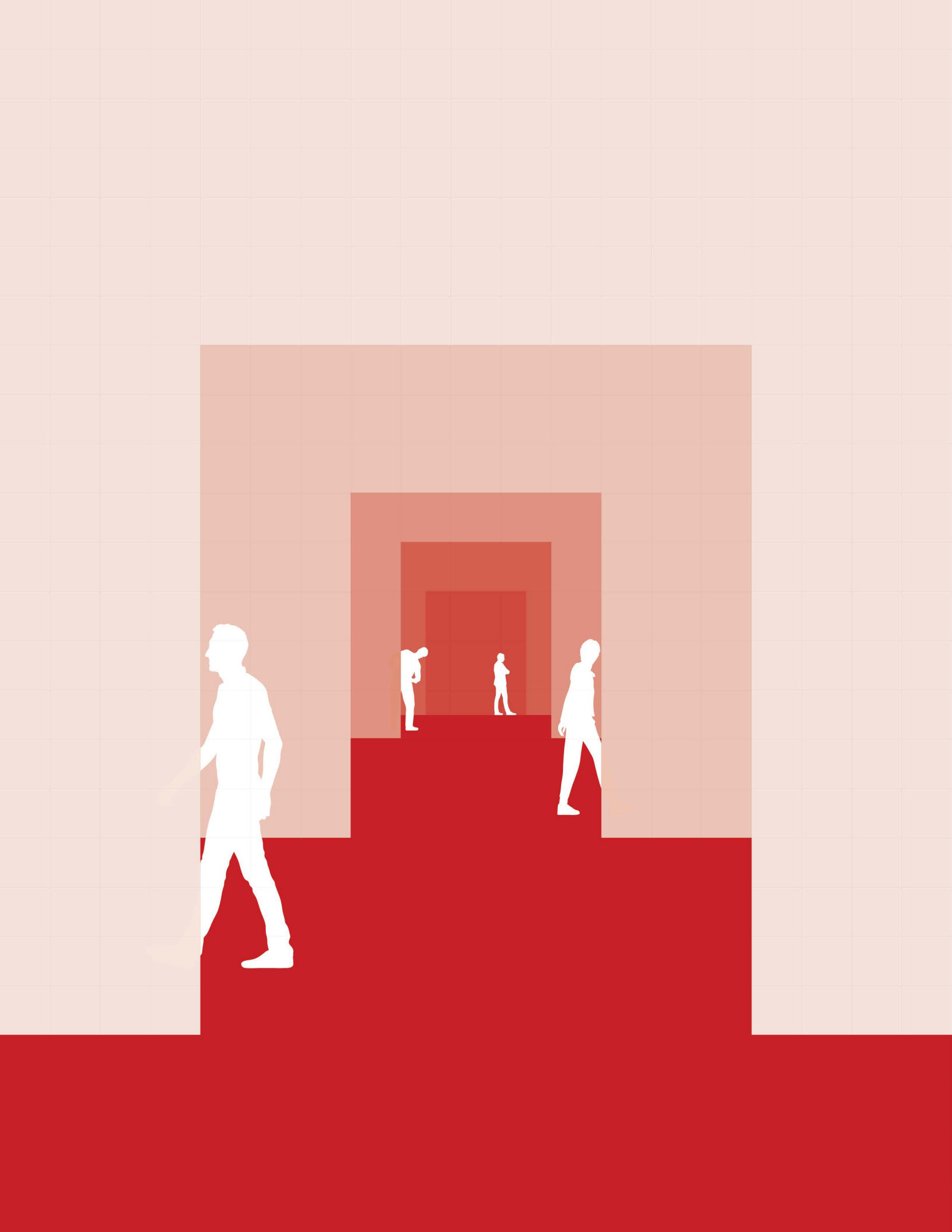
**INSTRUCTOR: THOMAS KELLEY**

A “Room”, in this project, is defined as a space that holds or omits your attention.

Patterns, textures and colors line the walls and floors, pushing and pulling you into rooms.

Rooms are organized along a grid of columns. Then, to create private and open spaces, walls are pushed and pulled, creating depth within a gridded field.

The matrix of rooms is experienced as one walks through the building. On the way, a visitor actively defines what a room is based on cues like form, color or the presence of others engaged in activities.





FRAGMENTED STUDY MODELS



MATERIAL + LIGHT



LAYERING

CONGLOMERATE STUDY MODEL



MATERIAL + LIGHT



LAYERING



ORIENTATION



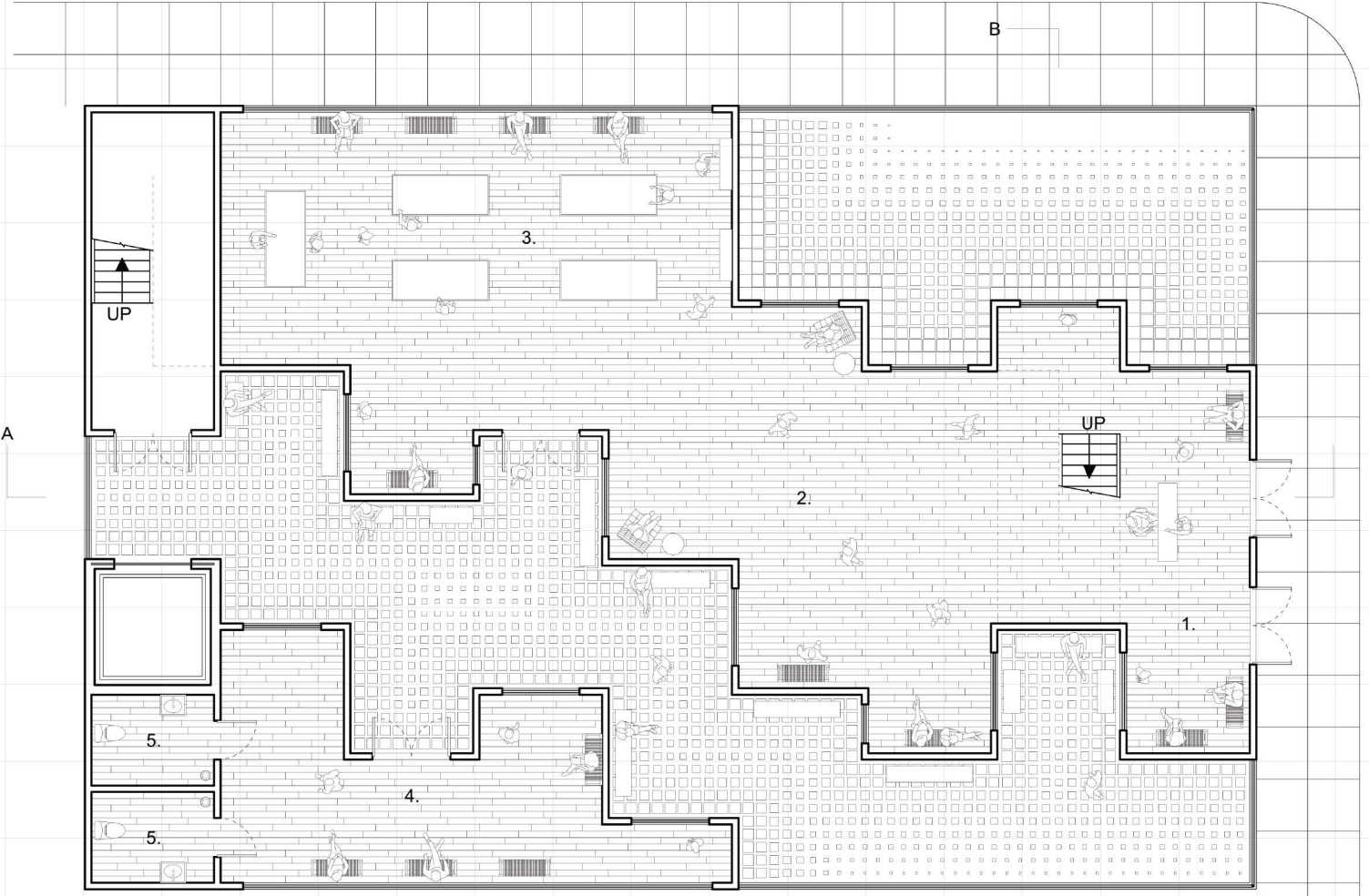
THRESHOLD



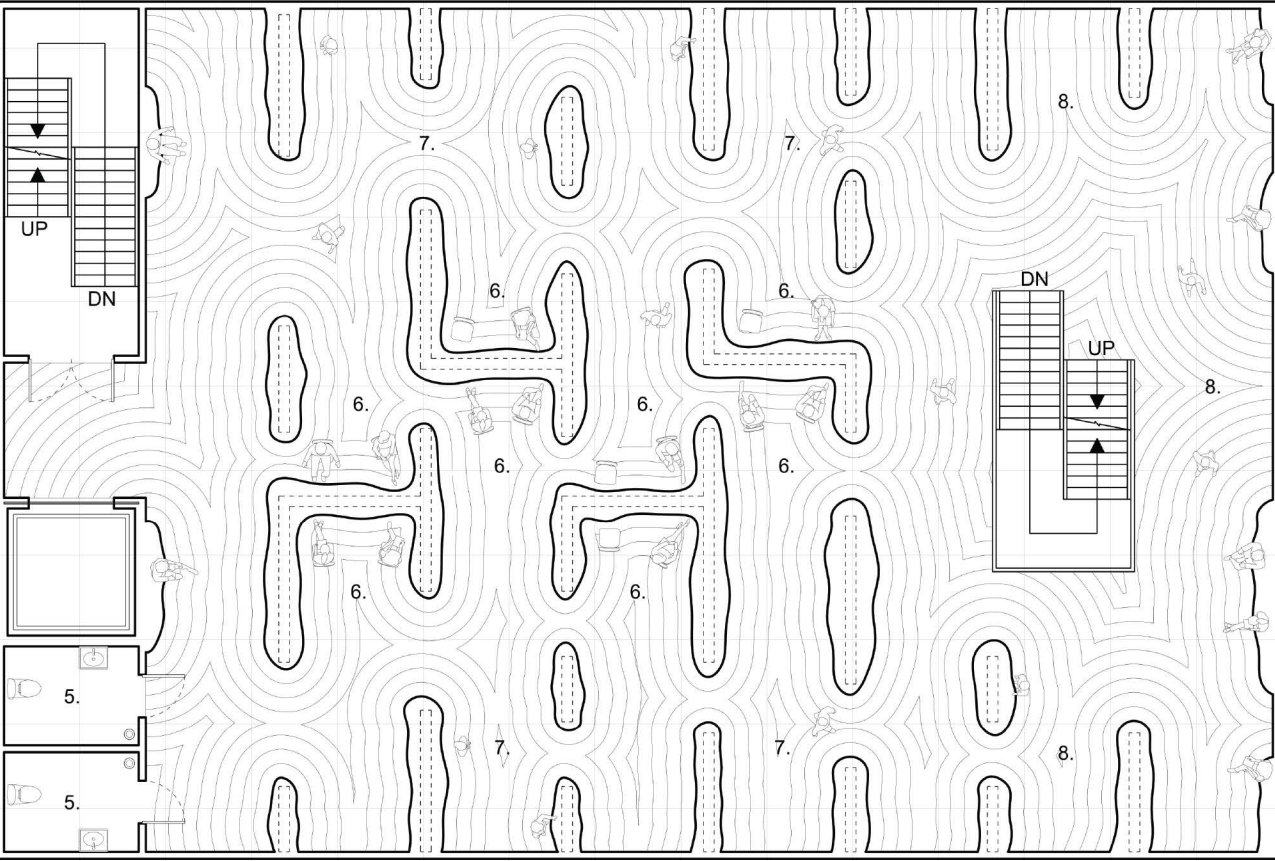
ORIENTATION



THRESHOLD



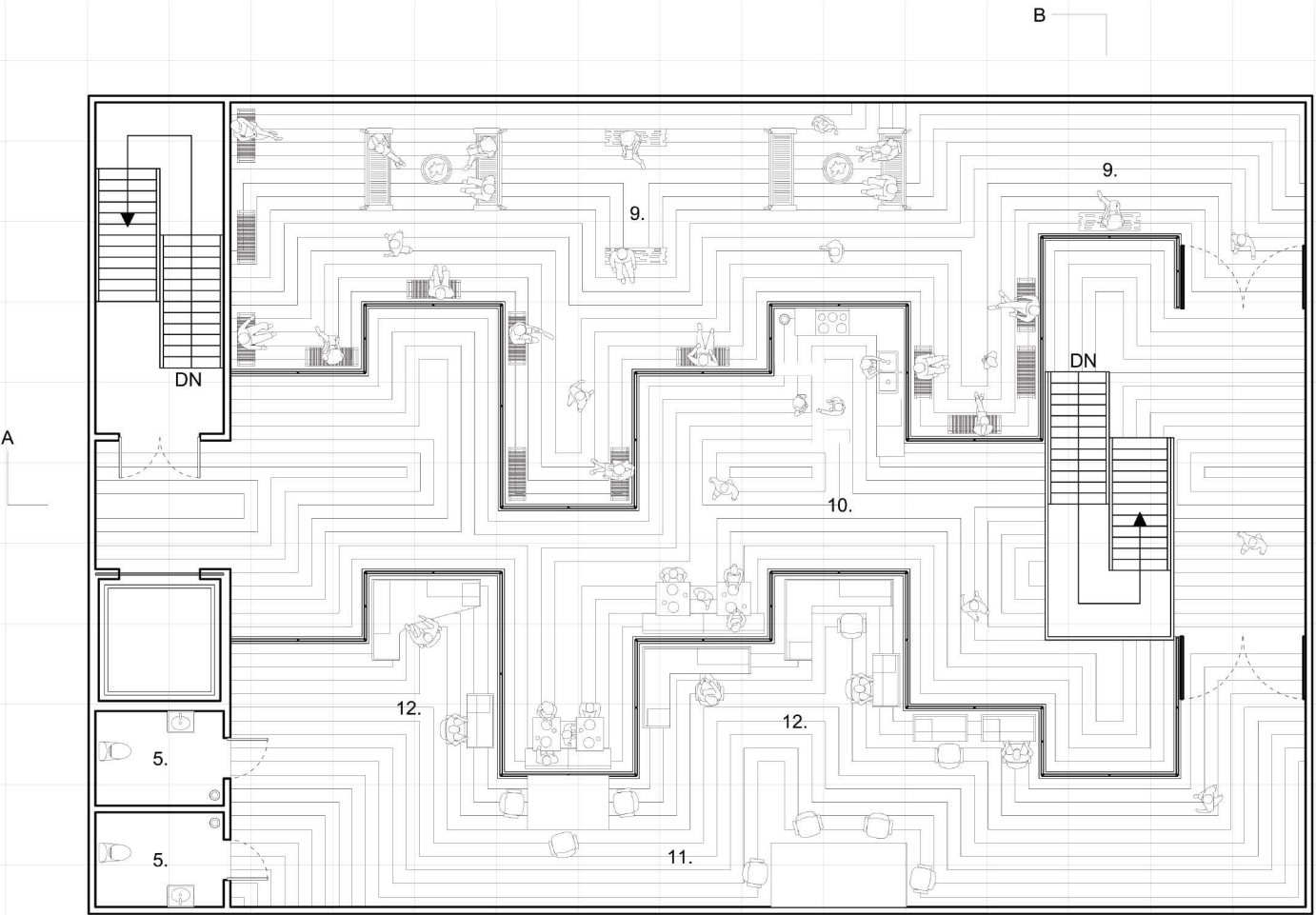
GROUND FLOOR PLAN



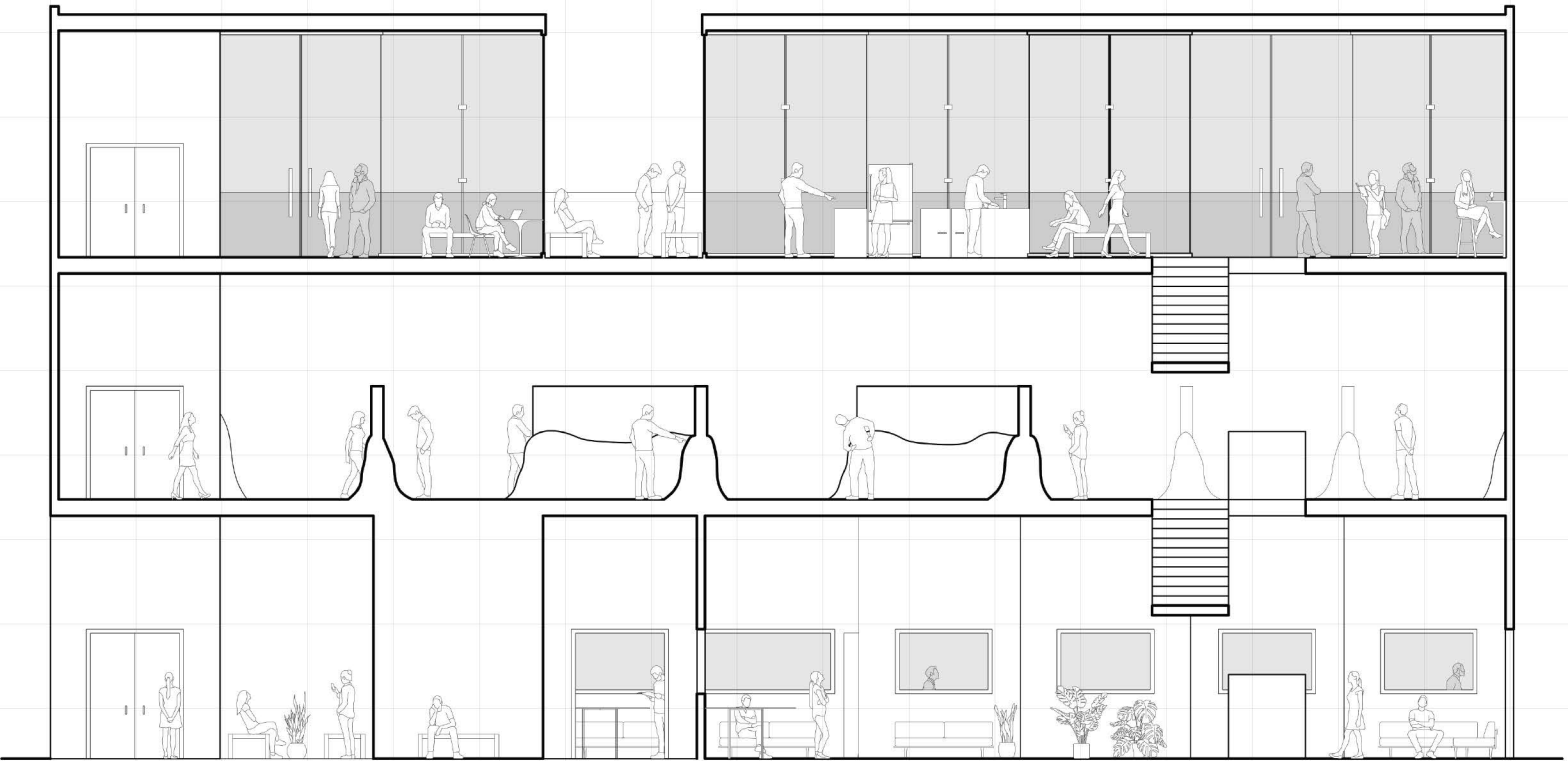
LEVEL 2 FLOOR PLAN

- |              |                |                |                |
|--------------|----------------|----------------|----------------|
| 1. Reception | 4. Daycare     | 7. Art Studios | 10. Cafe       |
| 2. Lounge    | 5. Bathroom    | 8. Exhibition  | 11. Conference |
| 3. Gift Shop | 6. Art Gallery | 9. Rooftop     | 12. Office     |





LEVEL 3 FLOOR PLAN



SECTION A





MODEL





MODEL



# 02.

## DECAYING ORDER

**SPRING 2023**

**INSTRUCTOR: DAN WHEELER**

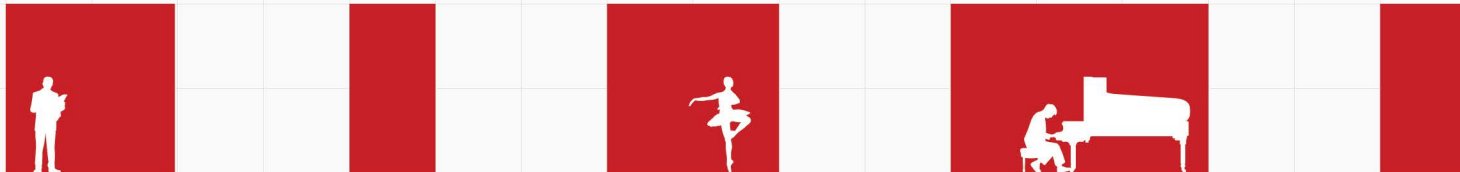
*The intent is to activate the site with a linear academy of workspaces, low slung so not to diminish the presence of the industrial archeology, while spurring activity/ interest in the site.”*

This project explores a series of modestly sealed workspaces, each bound by a 48 x 48 x 16 foot envelope, forming a wall running parallel to the sublime ore walls at U.S. Steel’s South Works.

Rather than attempting to create a new spatial experience, the workspaces replicate the experience of traversing through the ore walls.

Constructed from rammed earth, both inside and out, the walls resemble the decaying concrete structures. As you enter each workspace, you transition through a wooden box before reaching the larger space. This not only allows for decompression but also mimics the experience of traversing through the openings in the ore walls and emerging on the other side.

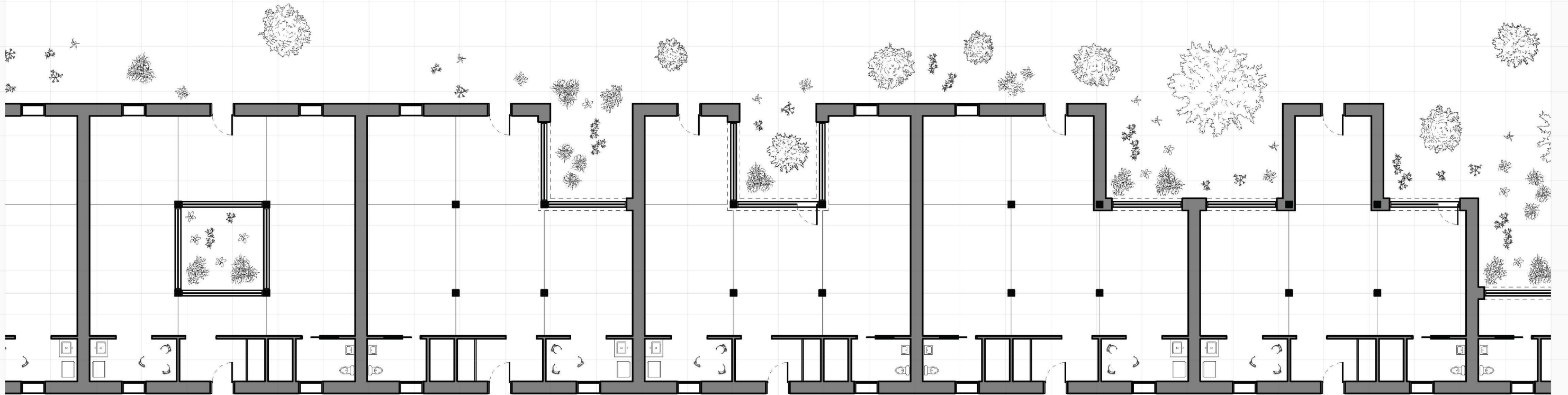
The string of workspaces are all organized on a nine-square grid, but each space is unique, to accomodate different programs. As you move towards the lake, the exterior encroaches on the interior, forming courtyards and private exterior spaces for residents. This notion is derived from the crumbling of the original ore walls as they approach the lake.



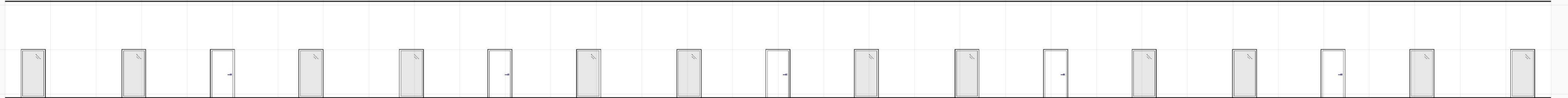




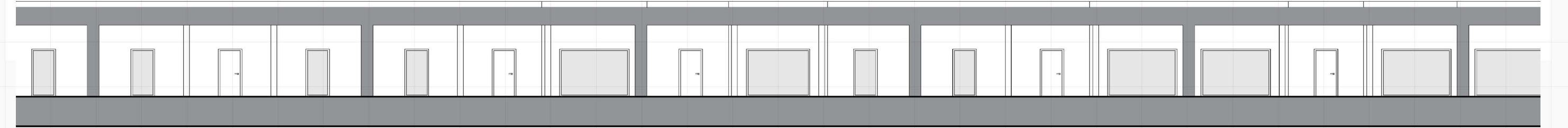




PLAN

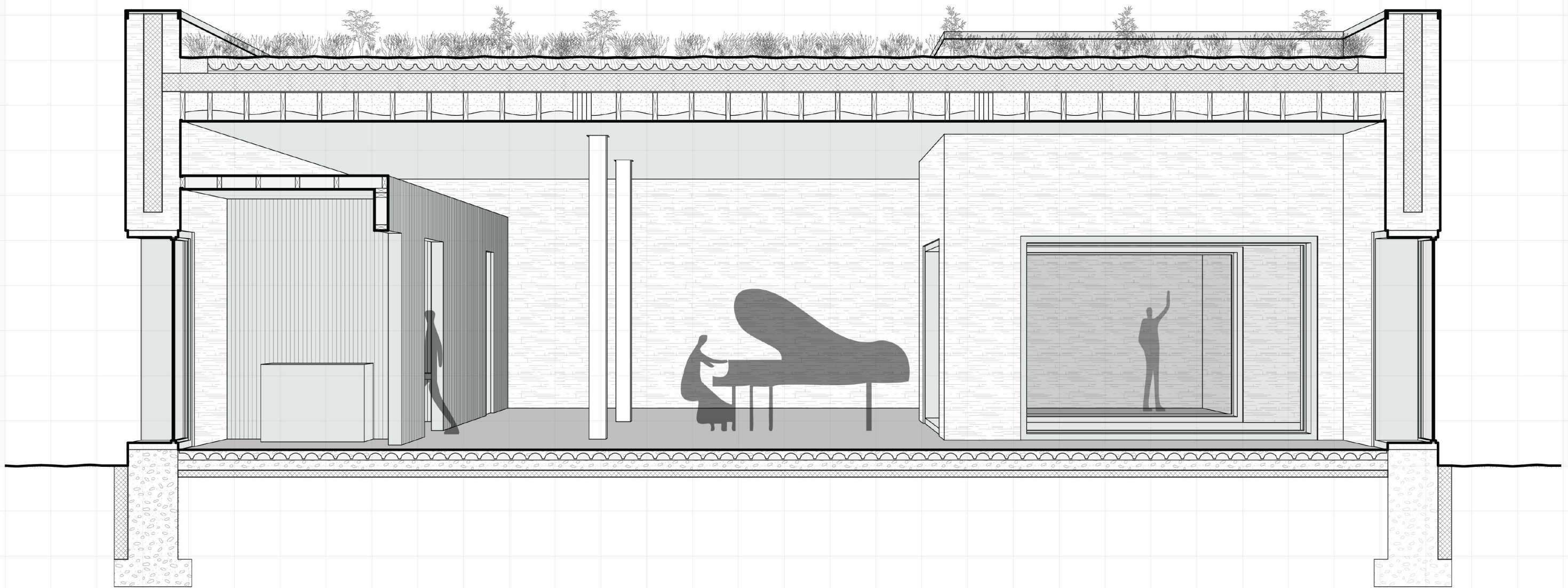


ELEVATION



SECTION



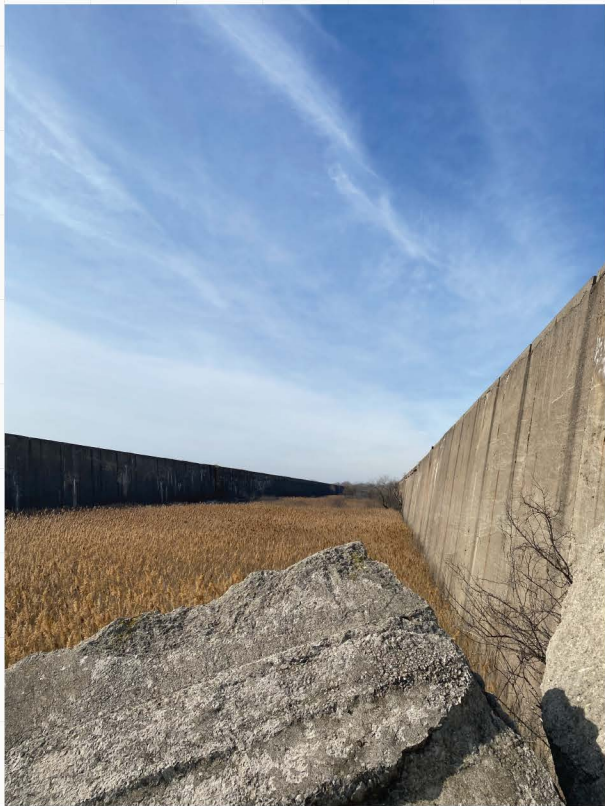


SECTION PERSPECTIVE





DECAY



ENDLESS



SITE PHOTOGRAPHS

RENDERS

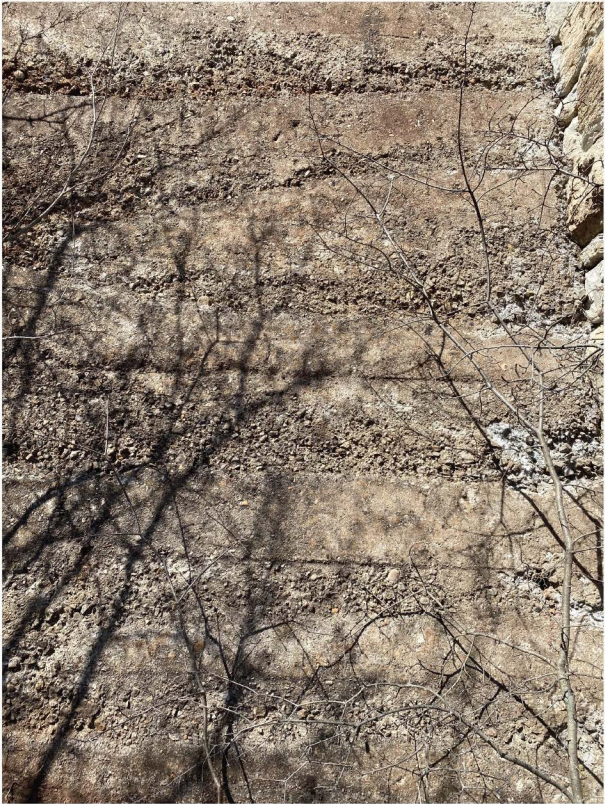




ORDER



REPITITION



MATERIAL



RENDERS

SITE PHOTOGRAPHS



# 03.

## REFINEMENT

FALL 2022

INSTRUCTOR: THOMAS KELLEY

*“An exercise in architectural refinement, or the improvement or clarification of something by the making of small changes.”*

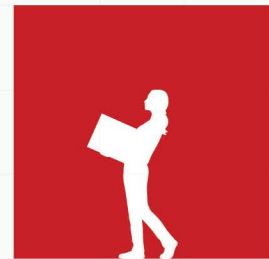
The site for this project is the Keck-Gottschalk-Keck apartments, located in Hyde Park, Chicago. The original building took reference from the first Chicago School, as well as emerging architects around the world. At the time of construction, an architectural movement was not easily definable.

Refinement, in this project, is restoring focus on what the Kecks were trying to achieve by imposing a new form of rationalism to the building.

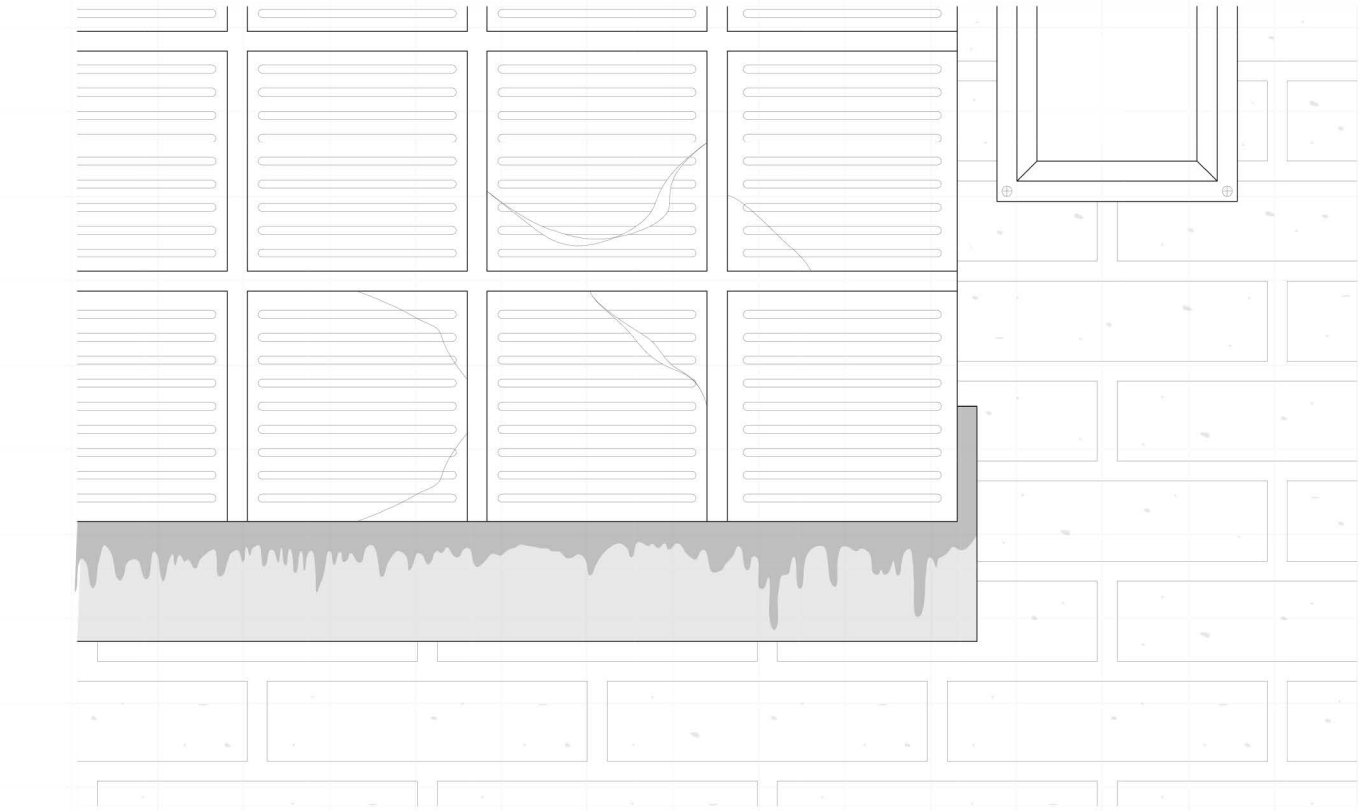
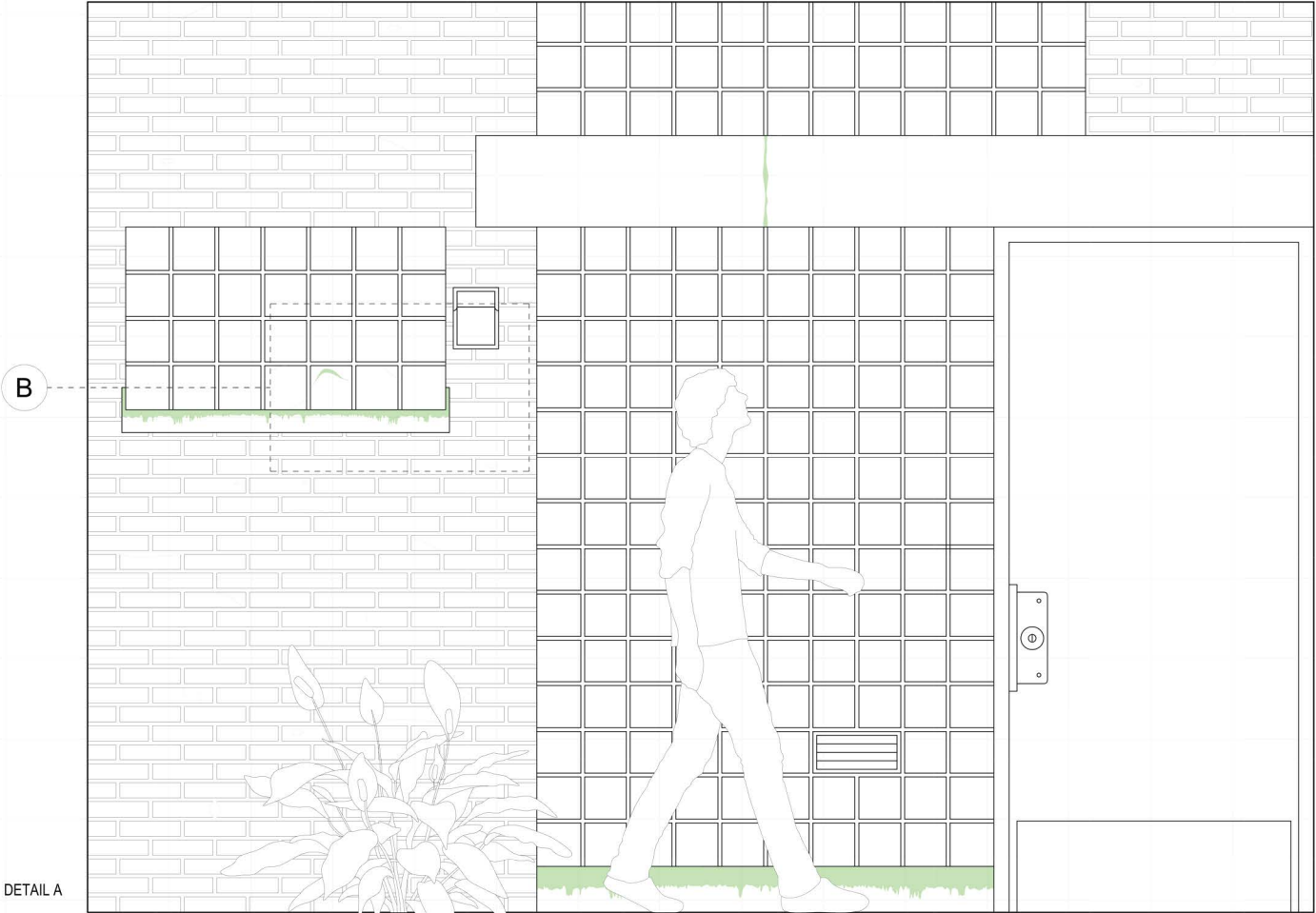
This project refines the principles the Kecks used in the current day and pushes them further. It combines four vastly different definitions of a modern household into one building, exploring social, economical and historical ideas within its framework.

The arrangement of rooms are derived from the most rational part of the building, the front facade. The rooms are arranged in a uniform set of modules that are repaeated and altered between floors.

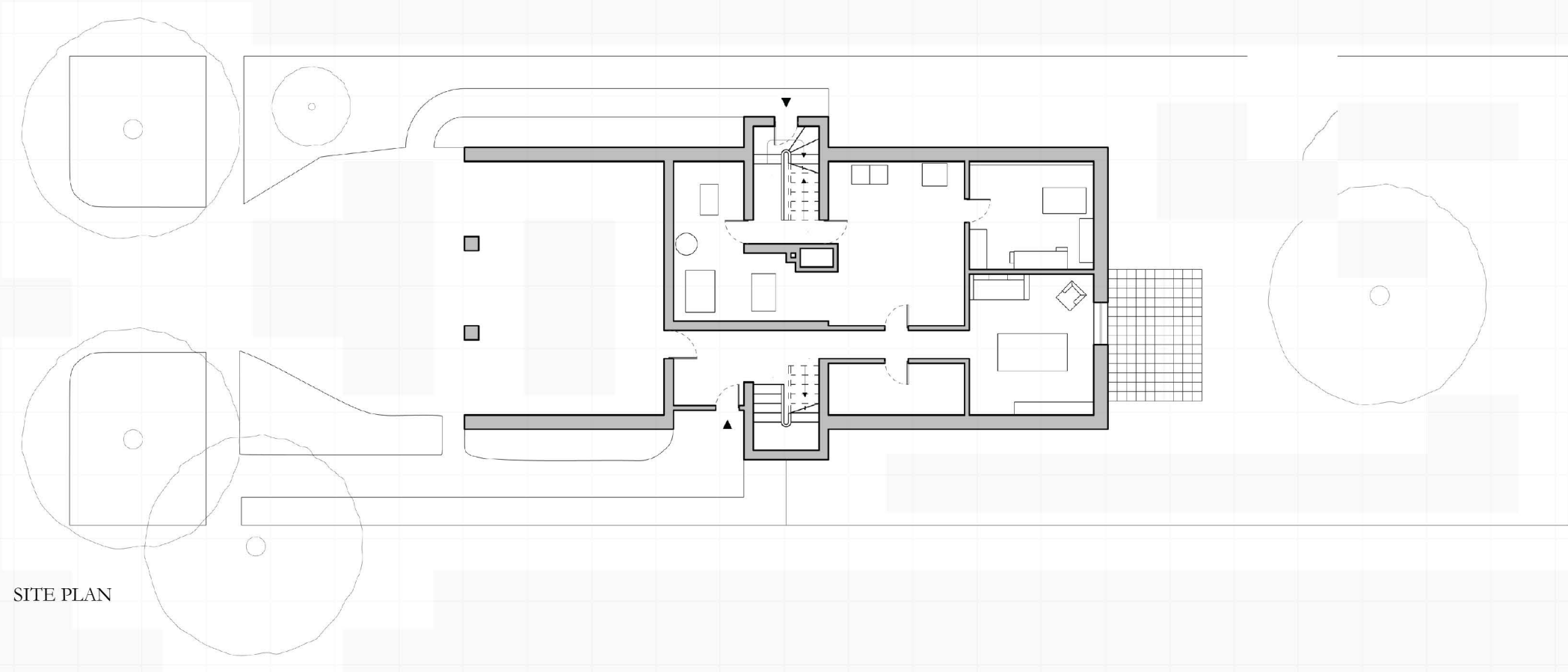
The intent is to restore focus on what the Kecks were trying to achieve and what they did achieve, rather than starting new.



AS FOUND

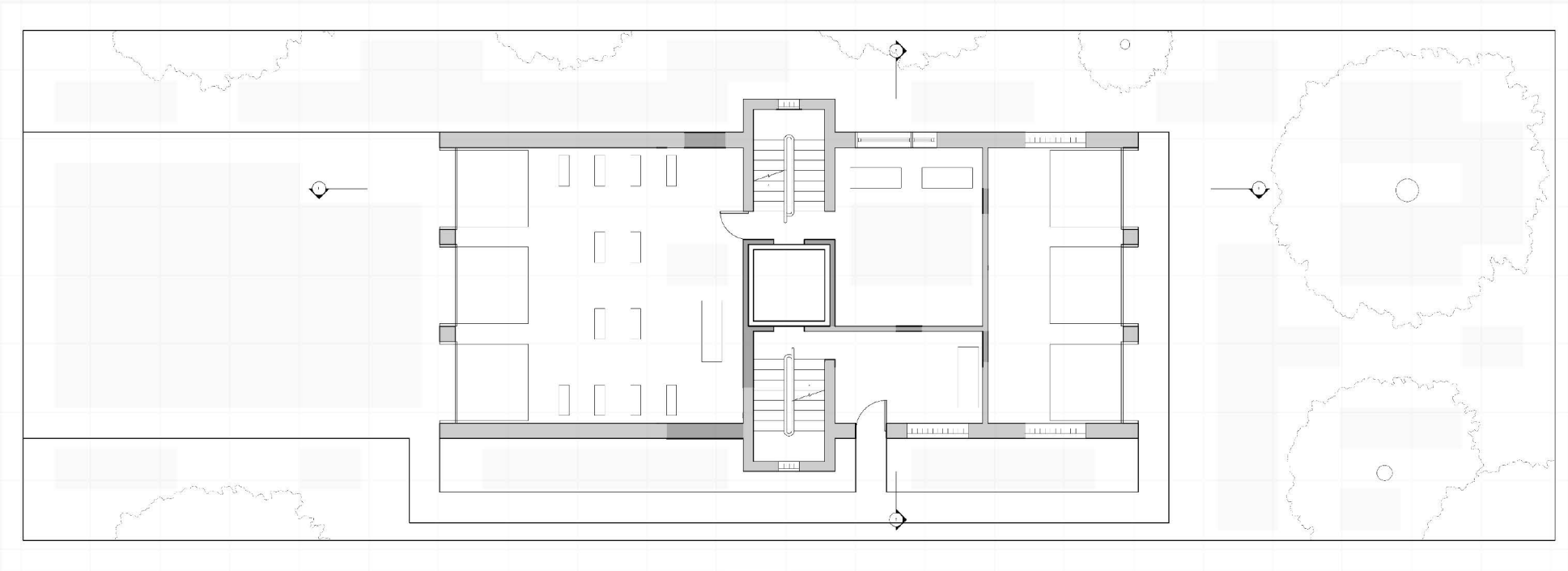


AS FOUND



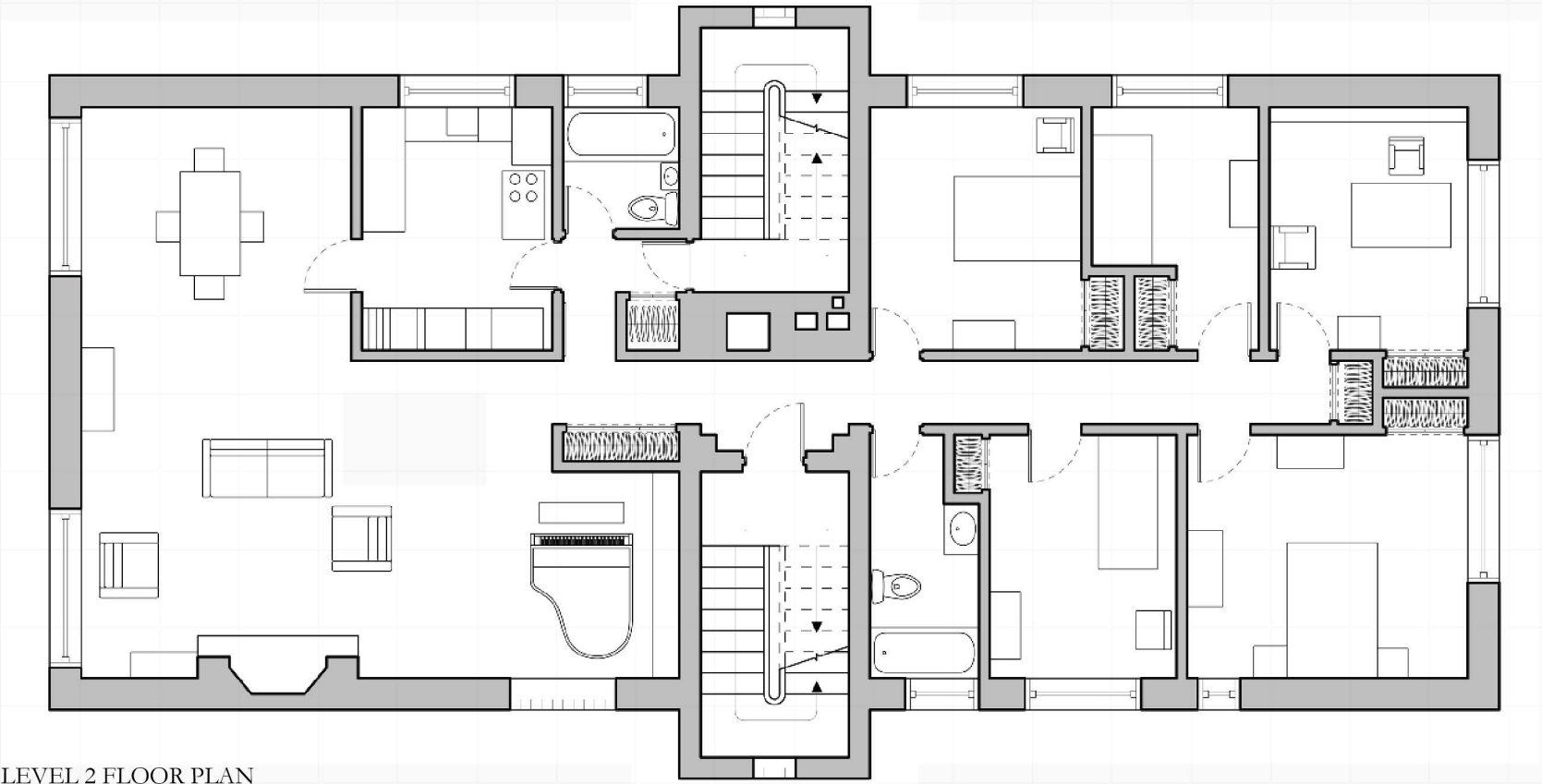
SITE PLAN

REFINED



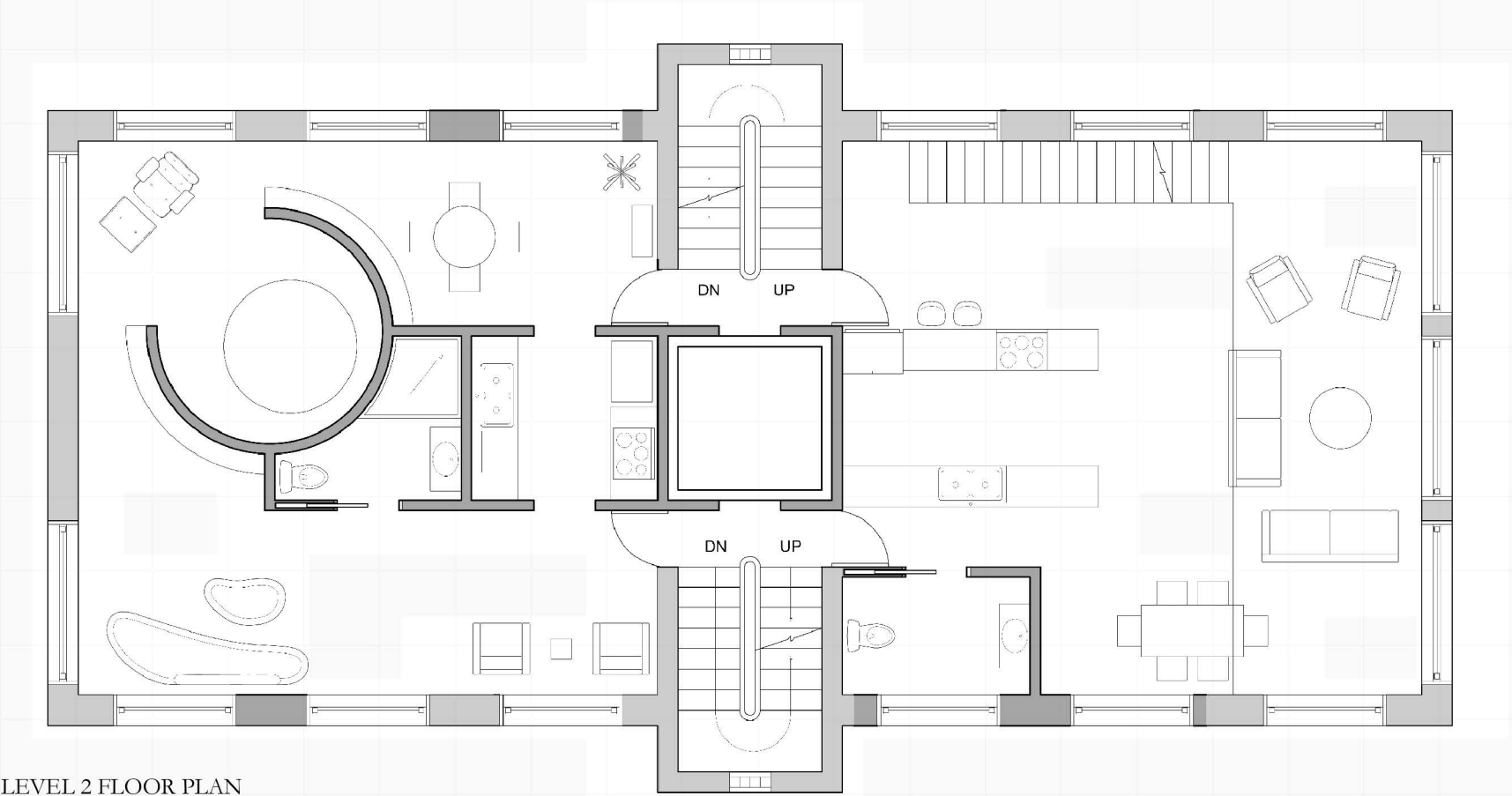
SITE PLAN

AS FOUND



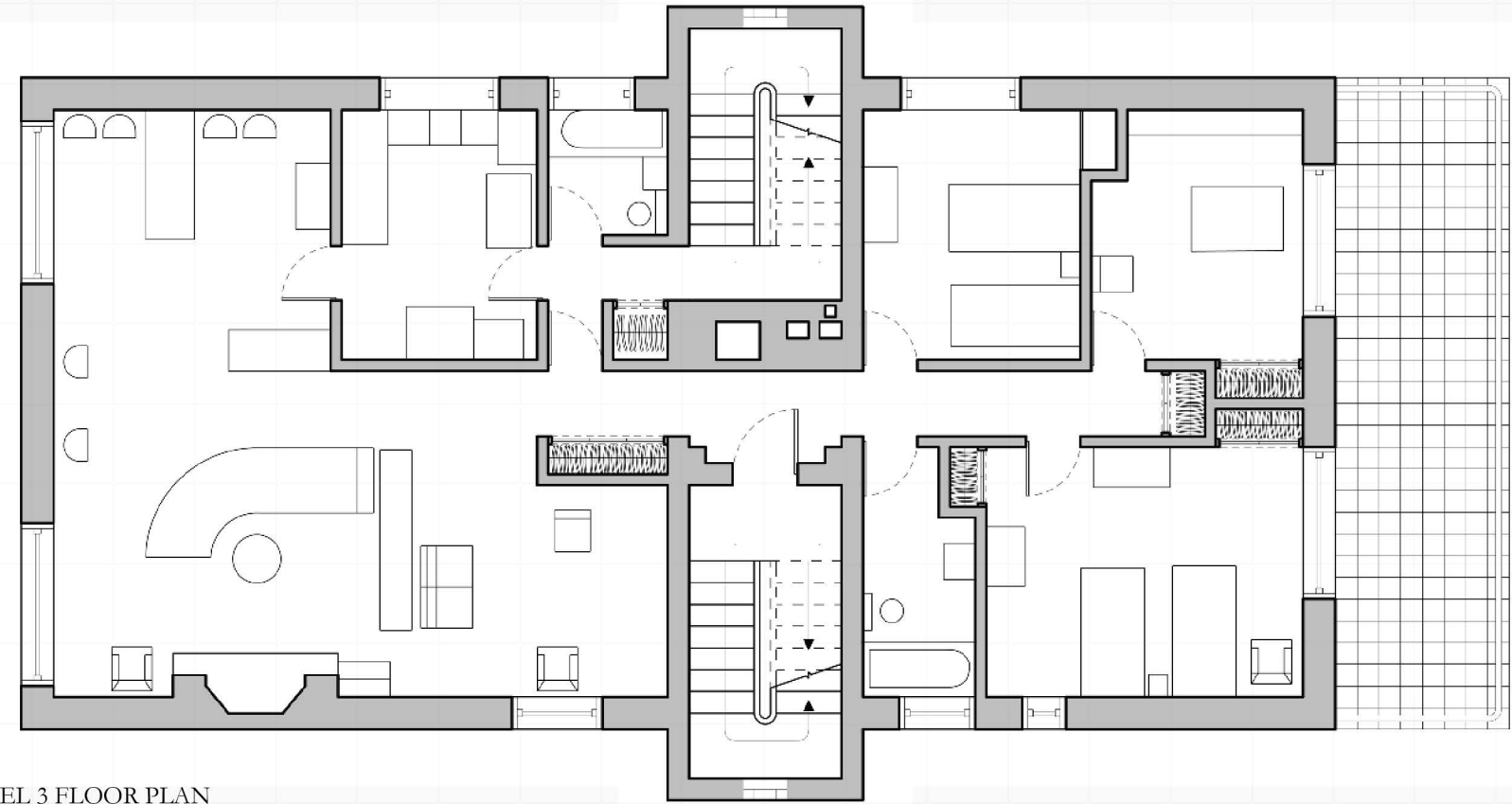
LEVEL 2 FLOOR PLAN

REFINED



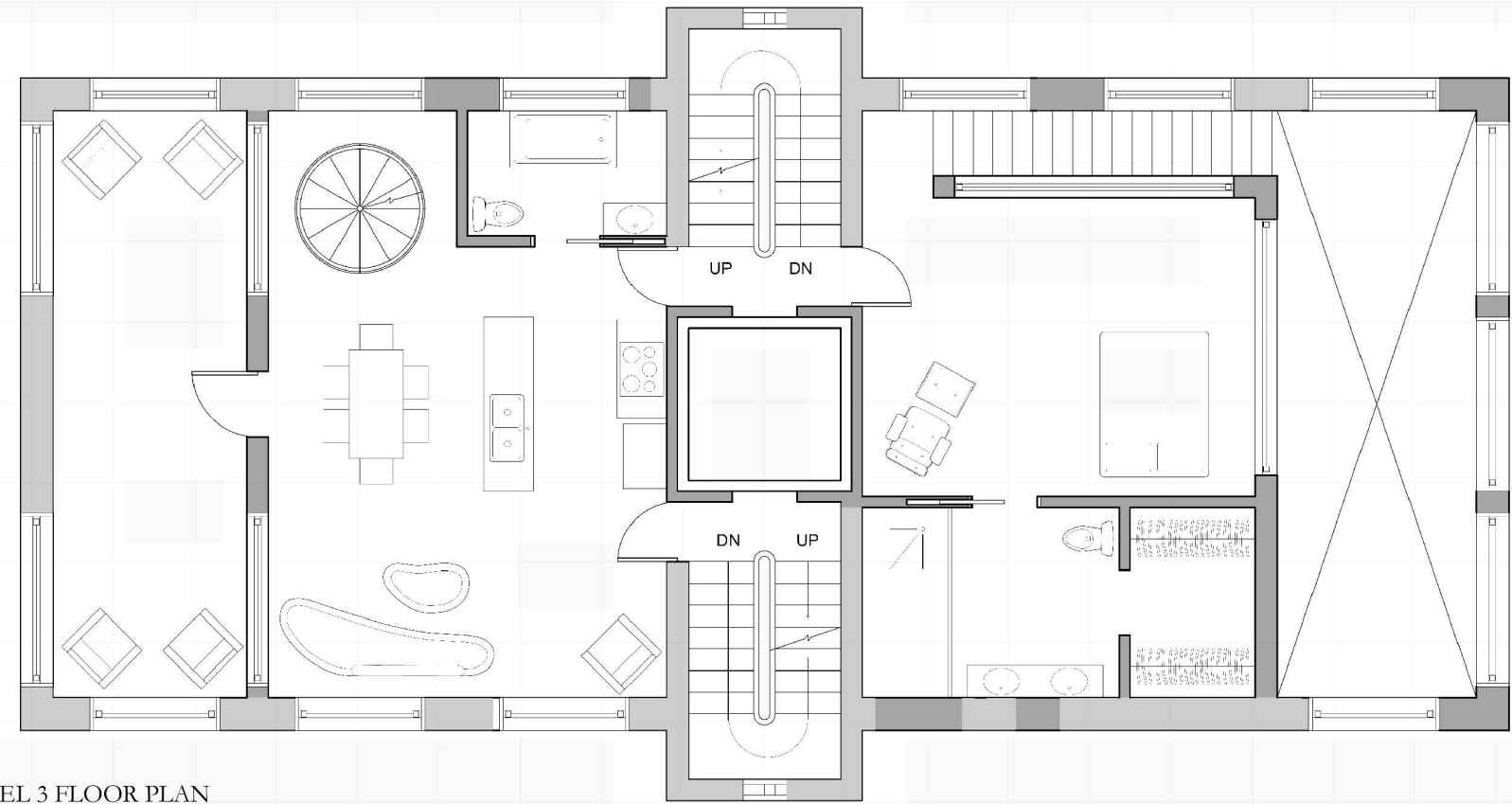
LEVEL 2 FLOOR PLAN

AS FOUND



LEVEL 3 FLOOR PLAN

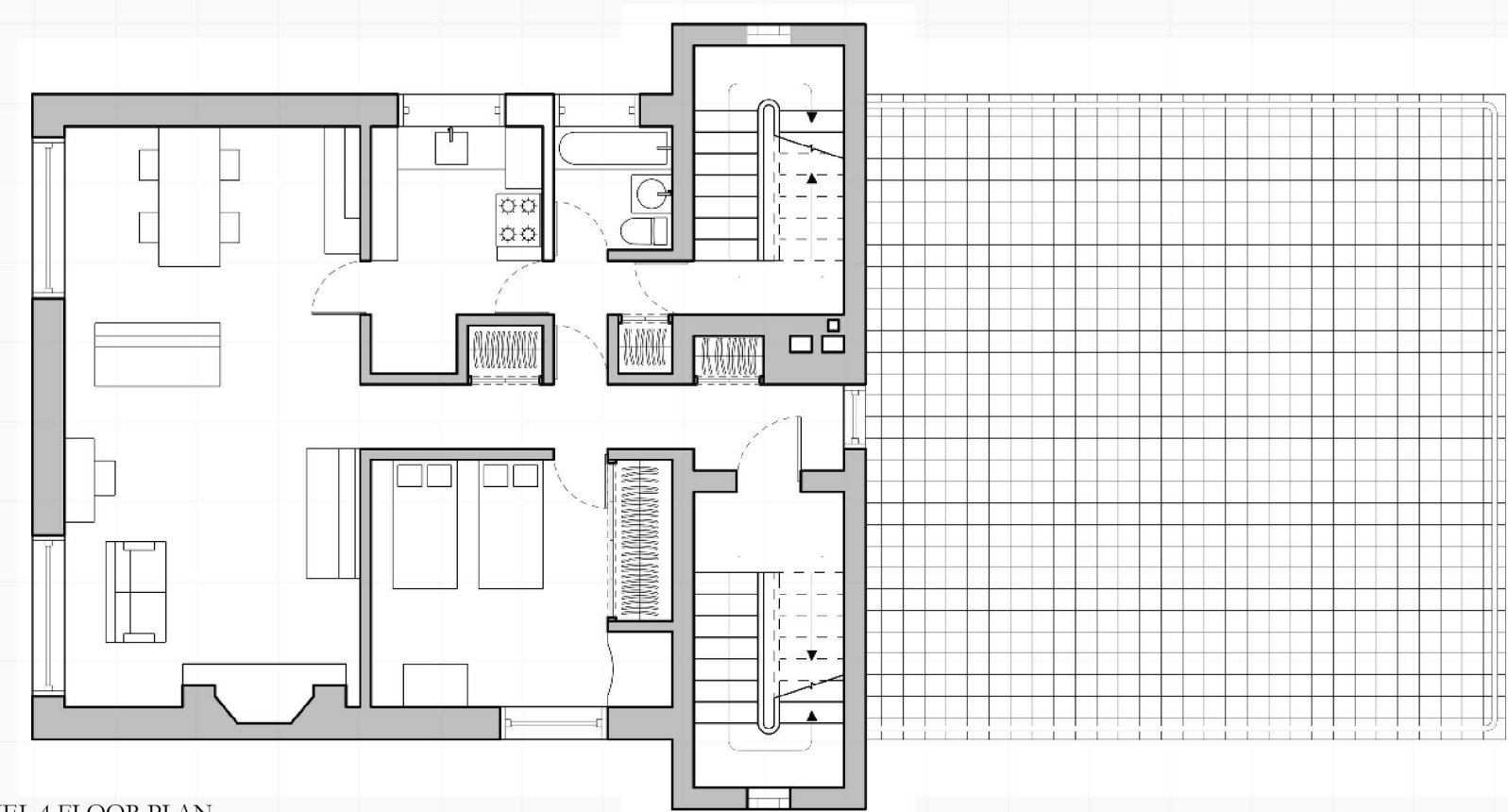
REFINED



LEVEL 3 FLOOR PLAN

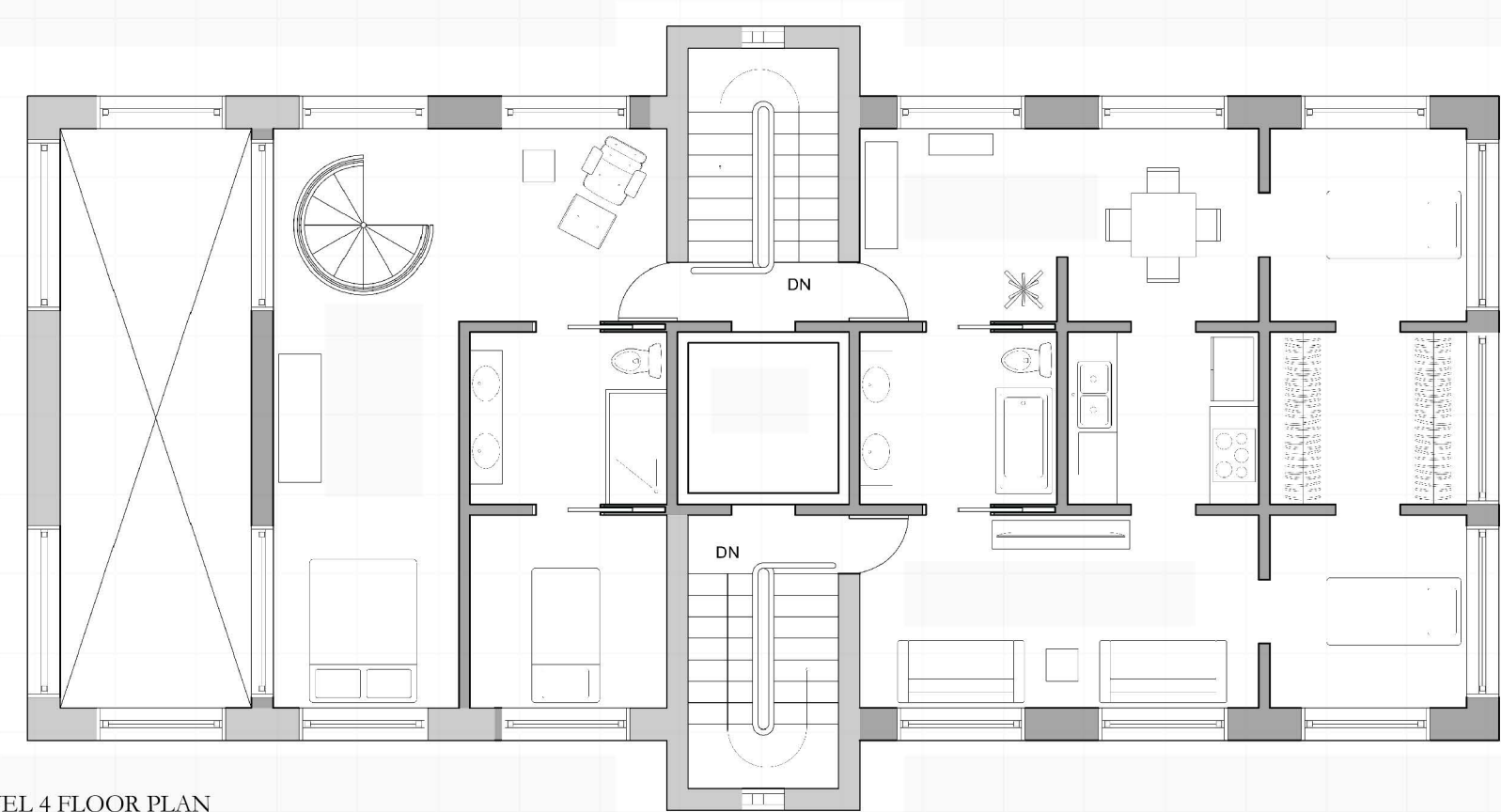


AS FOUND



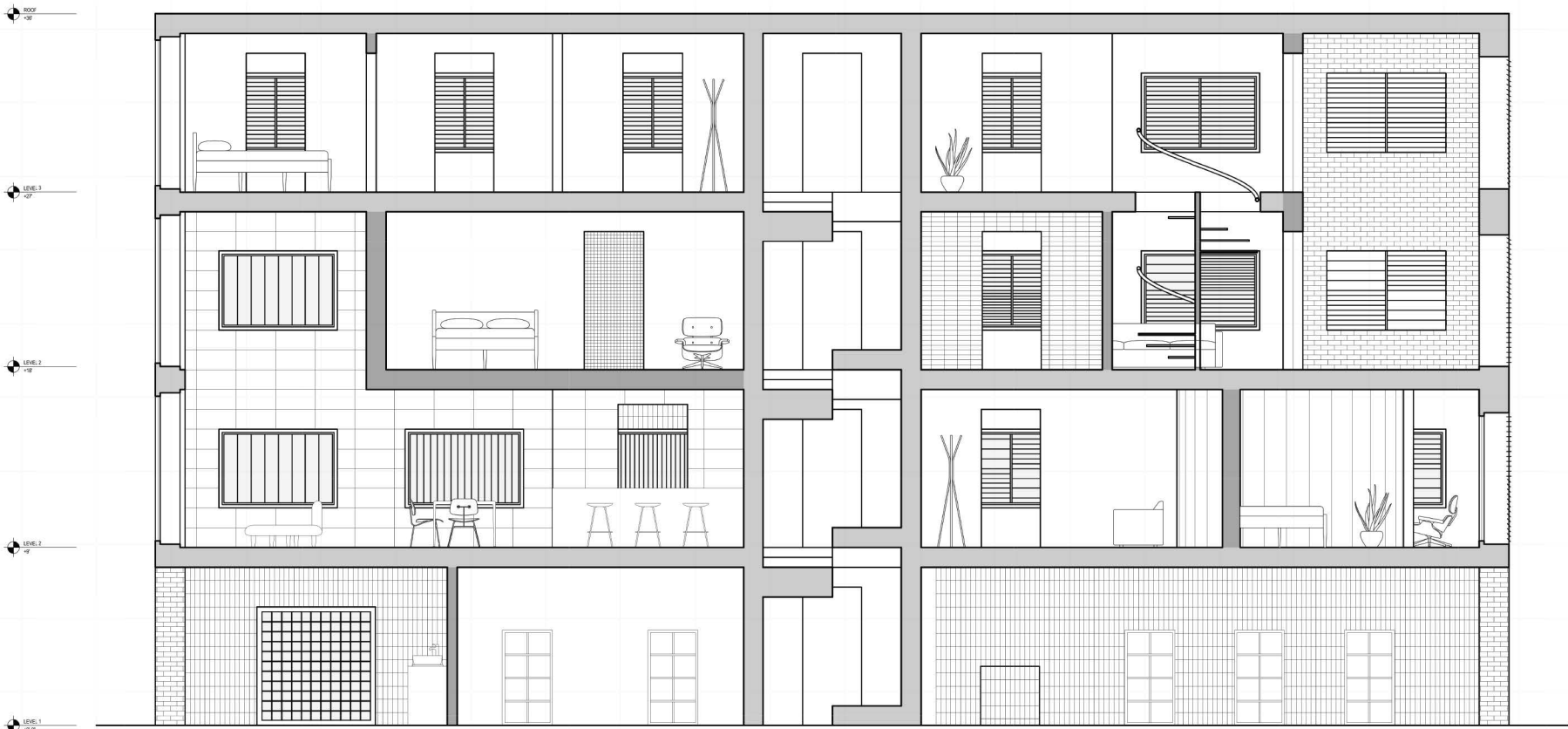
LEVEL 4 FLOOR PLAN

REFINED

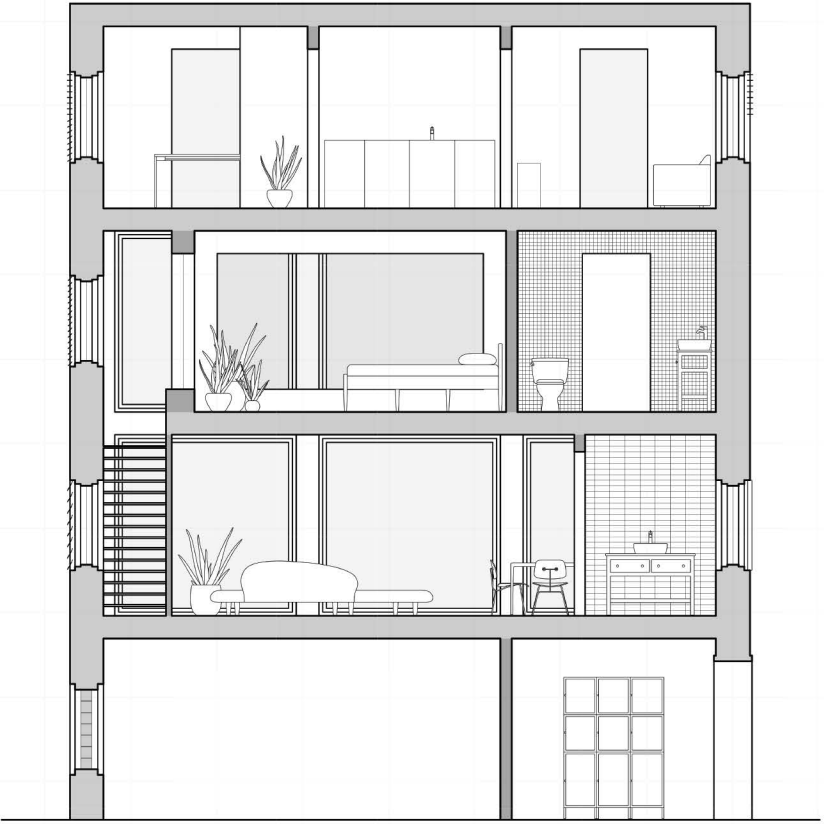


LEVEL 4 FLOOR PLAN

REFINED



LONGITUDINAL SECTION



TRANSVERSE SECTION





# 04.

## SUB - TONNETZ

SPRING 2024

INSTRUCTOR: TOM BROCK

*“Revolves around the making of discernable and meaningful connections between people, the institutions they rely on and the spaces these institutions create.”*

Concept: Aggregation

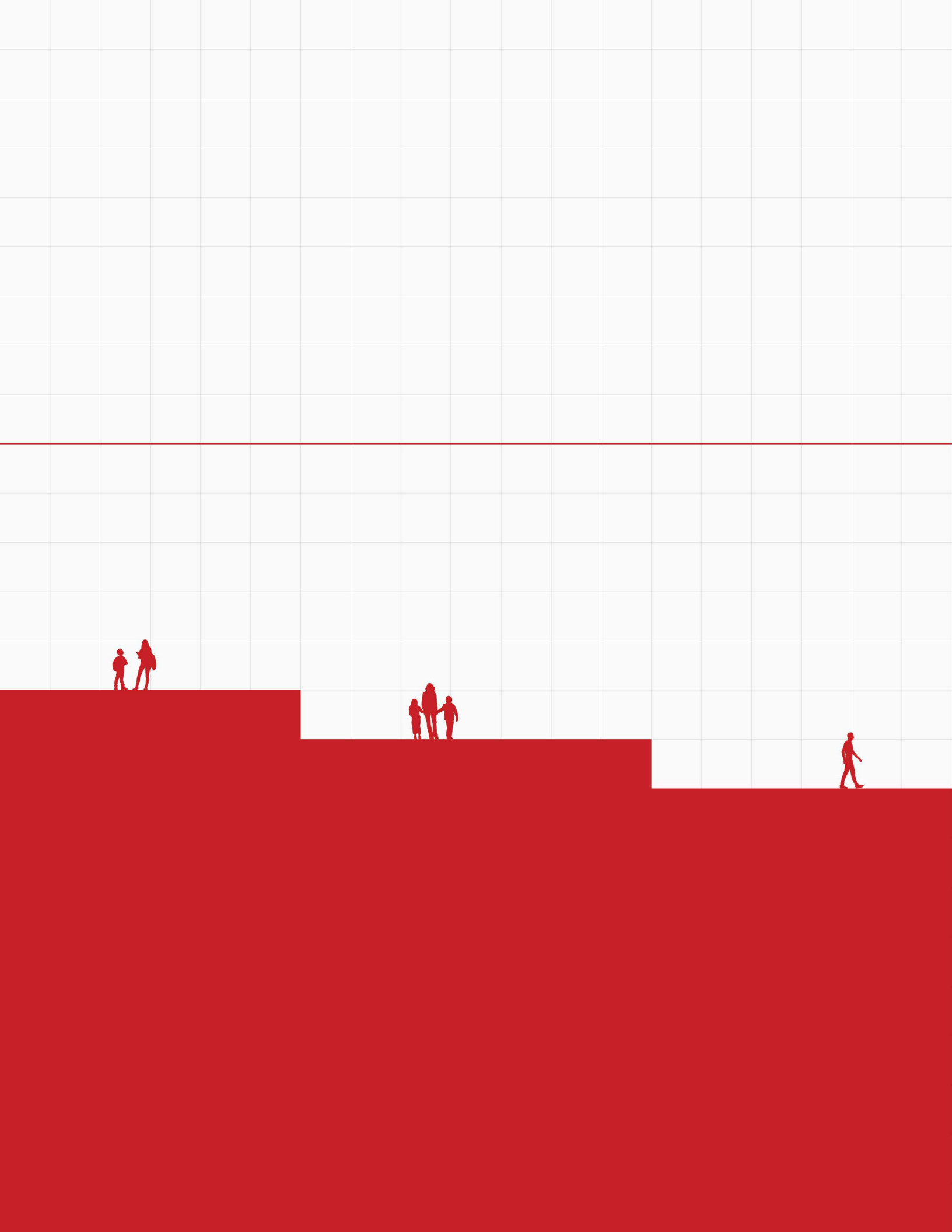
This project explores “aggregation” as both a collection of distinct parts forming a unified structure and the act of bringing people and information together. Programmatic elements combine to create a cohesive whole, both physically and socially.

Strategy: Modularity

A hexagonal grid reimagines the island’s topography, aligning with natural contours and enabling flexible, modular design. This approach supports spatial adaptability and responds to Northerly Island’s environmental and cultural context.

Architectural Expression: Rhythm + Integration

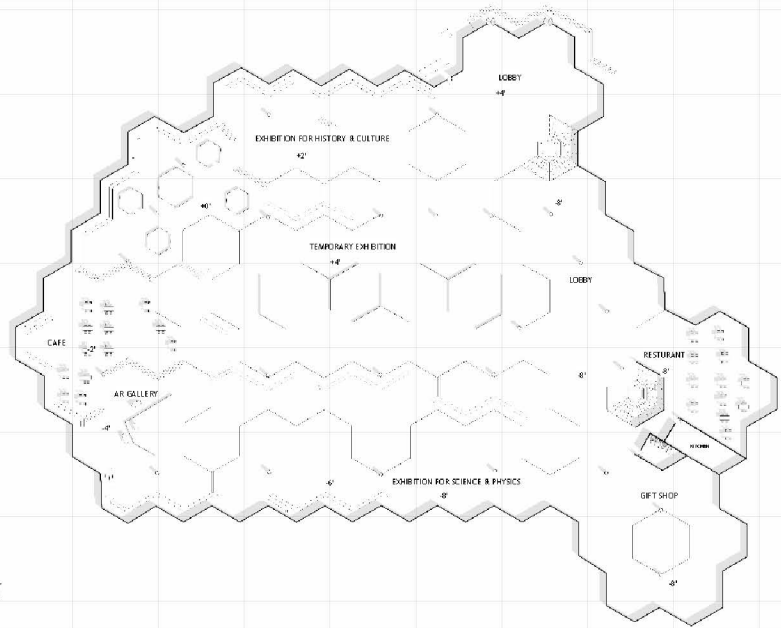
The design integrates with the island’s landscape through a stepped rhythm that mirrors natural elevation changes. ‘Loud’ zones like the museum are placed above ground, while ‘quiet’ zones such as the school and auditorium are below. The hexagonal grid extends into the surroundings, blending with the island’s patterns to create a sustainable, immersive environment attuned to sound, ecology, and cultural sensitivity.



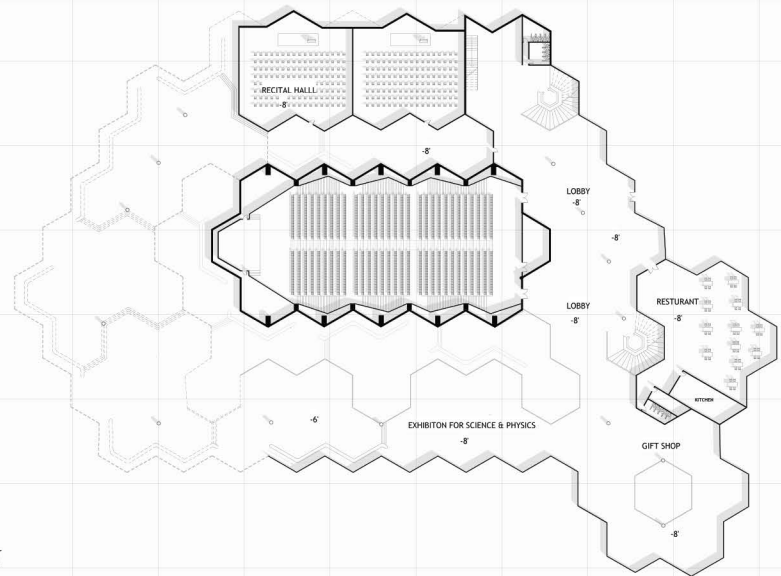




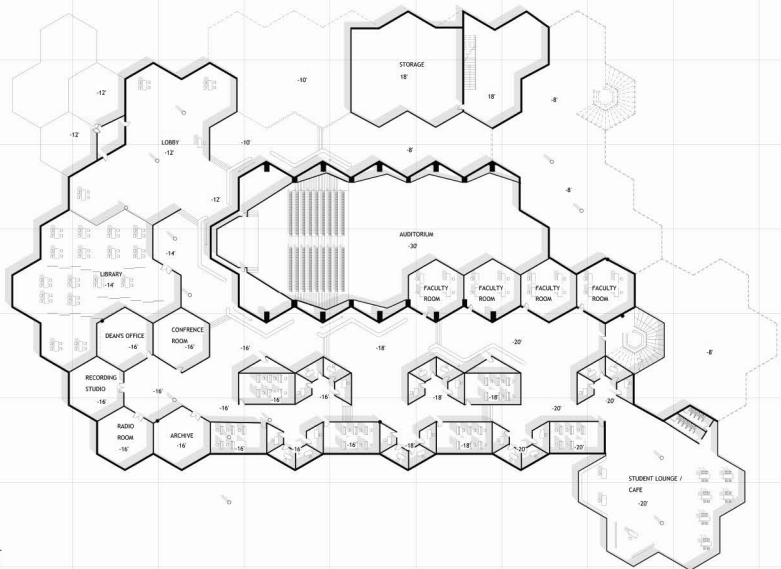




LEVEL 3 FLOOR PLAN



LEVEL 2 FLOOR PLAN



LEVEL 1 FLOOR PLAN









# 05.

## EMBRACE

FALL 2023  
INSTRUCTOR: DAVID BRINNINSTOOL & ANDREW METTER

*“A response to the issues of mobility, displacement and accommodations to the weary traveler”*

### Concept: Embrace

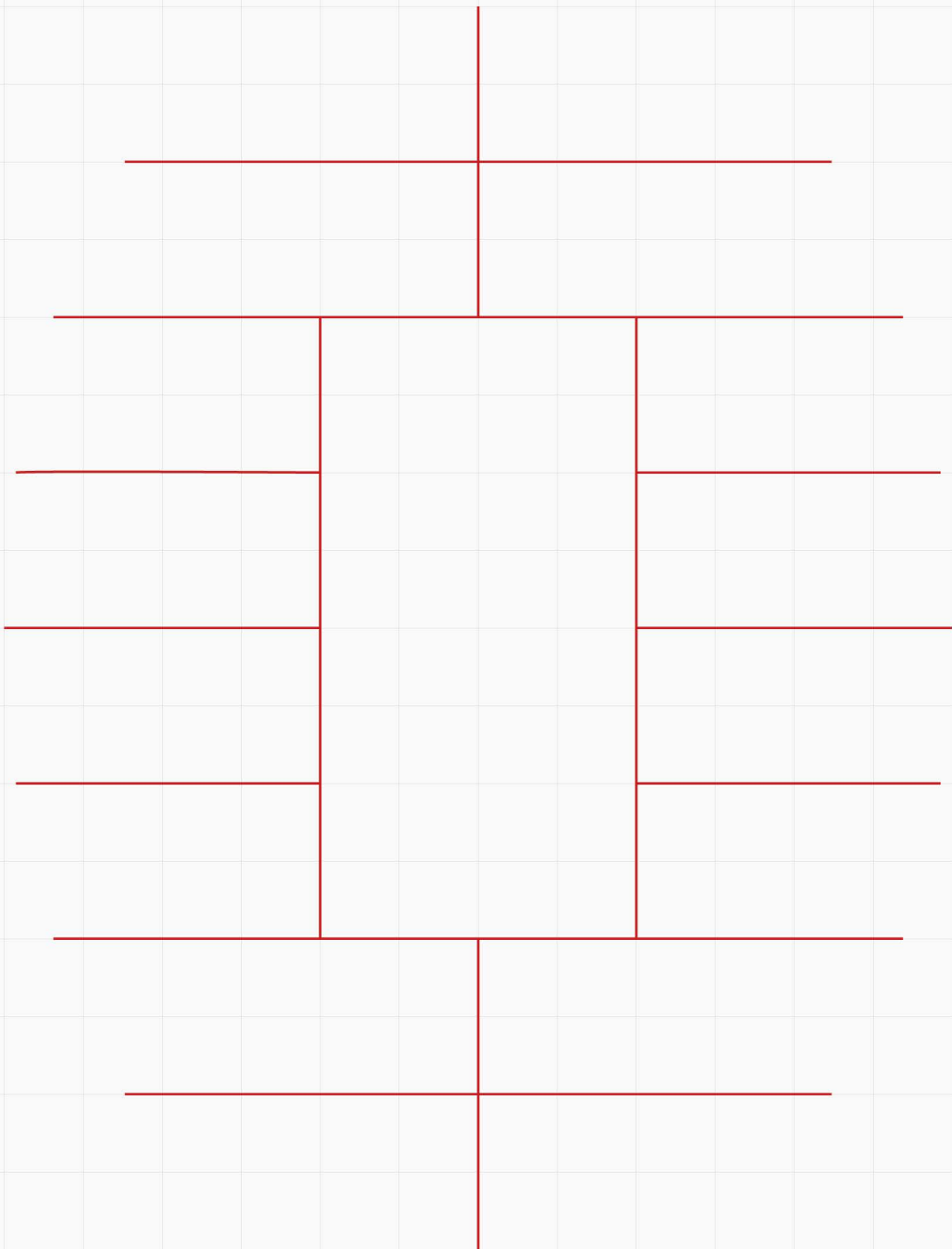
The building welcomes those seeking sanctuary, rising from the site as a beacon toward Logan Square and downtown Chicago. Three glass volumes float at ground level, inviting migrants into a courtyard that fosters open exchange with the park and neighborhood. The organic base conveys calm and nourishment, reflecting the mission of the welcome center.

### Strategy: Envelop

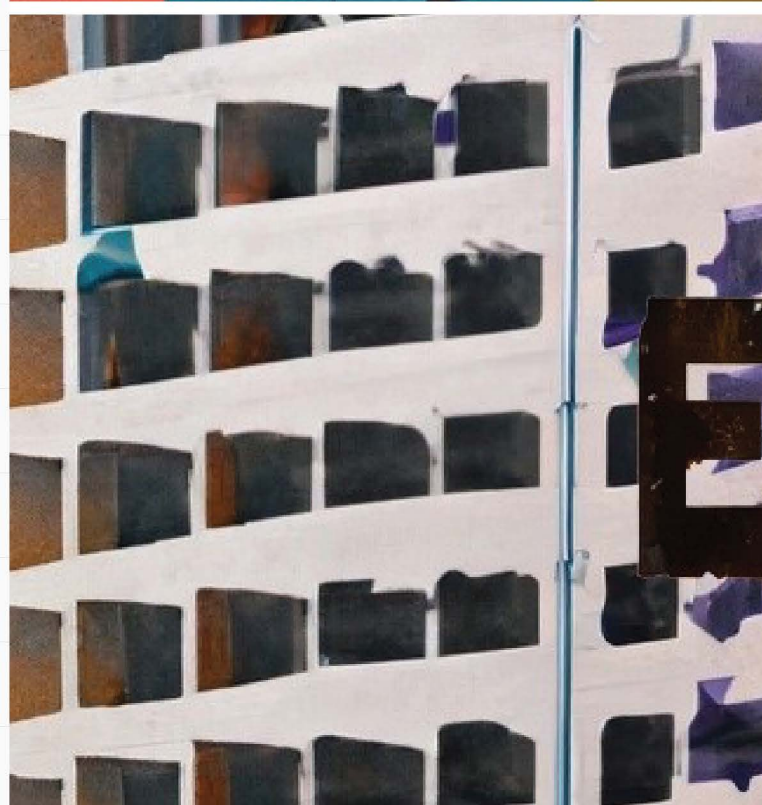
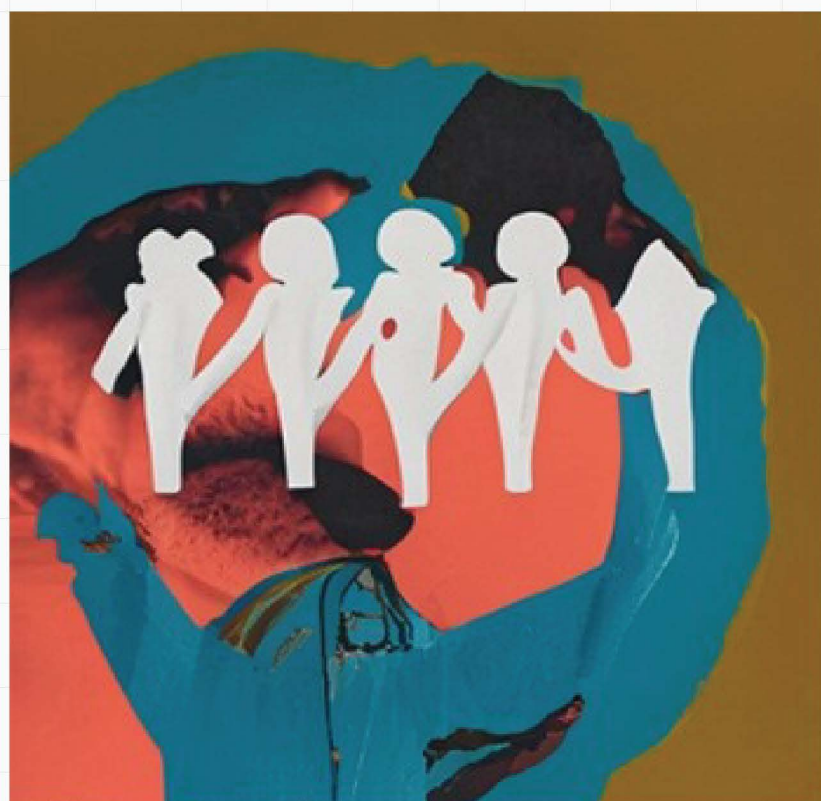
The base wraps the site’s edge, creating an inward-focused sanctuary. Circular and elliptical geometries evoke unity and openness, while shading devices soften the perimeter, blurring the line between inside and out.

### Architectural Expression: Weaving

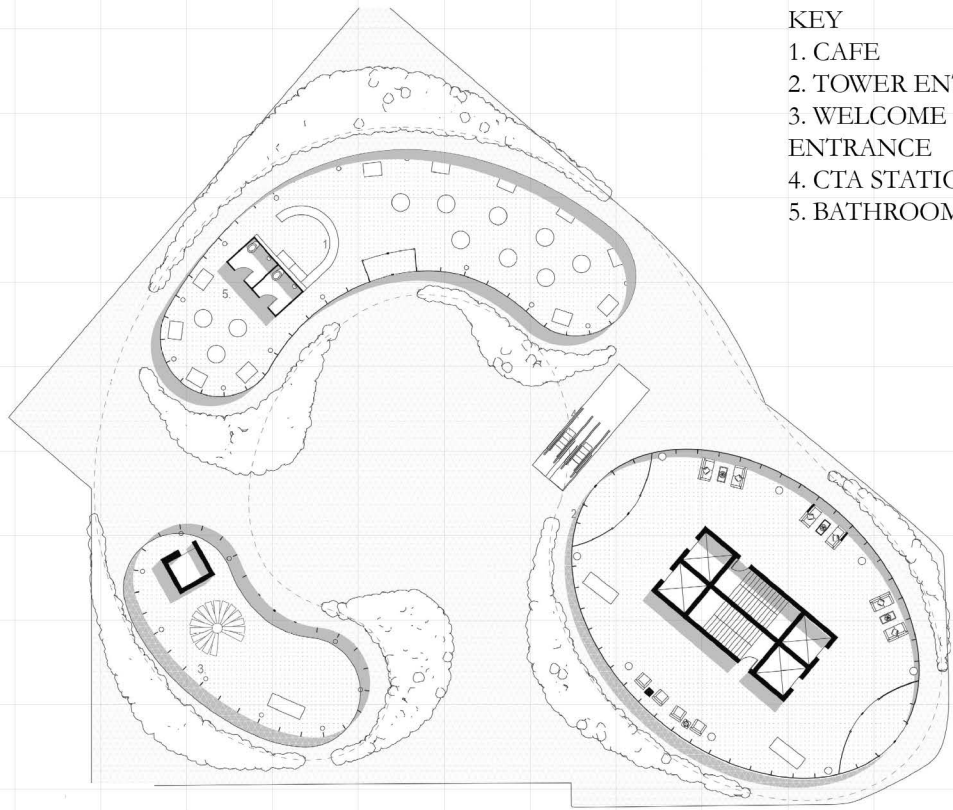
Program elements are unified through a layered façade. Shading fins, woven in alternating patterns, provide privacy and solar protection while echoing traditional fabric techniques, enhancing the building’s fluid and elegant form.





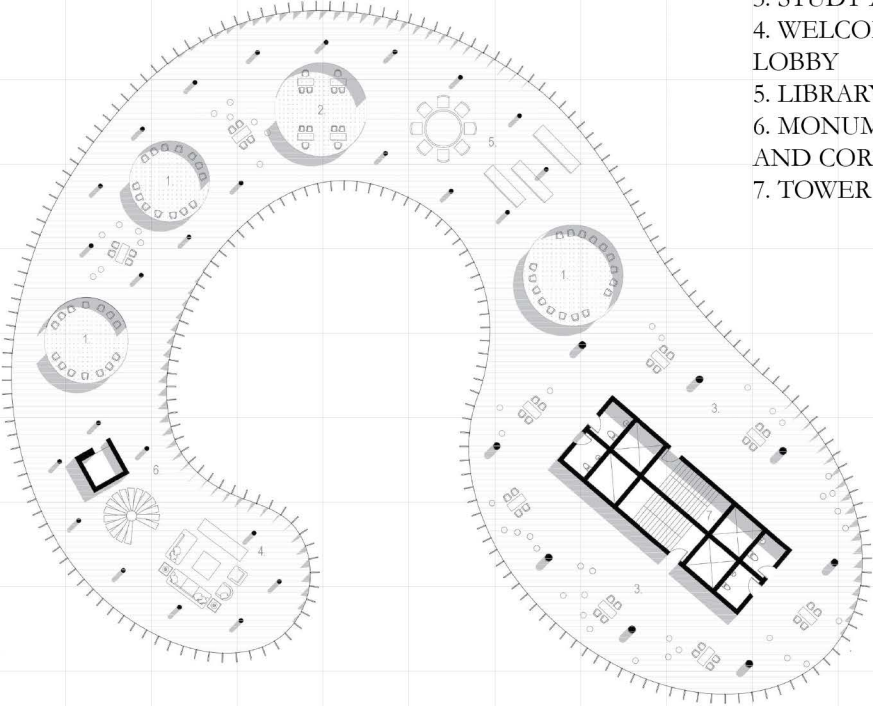






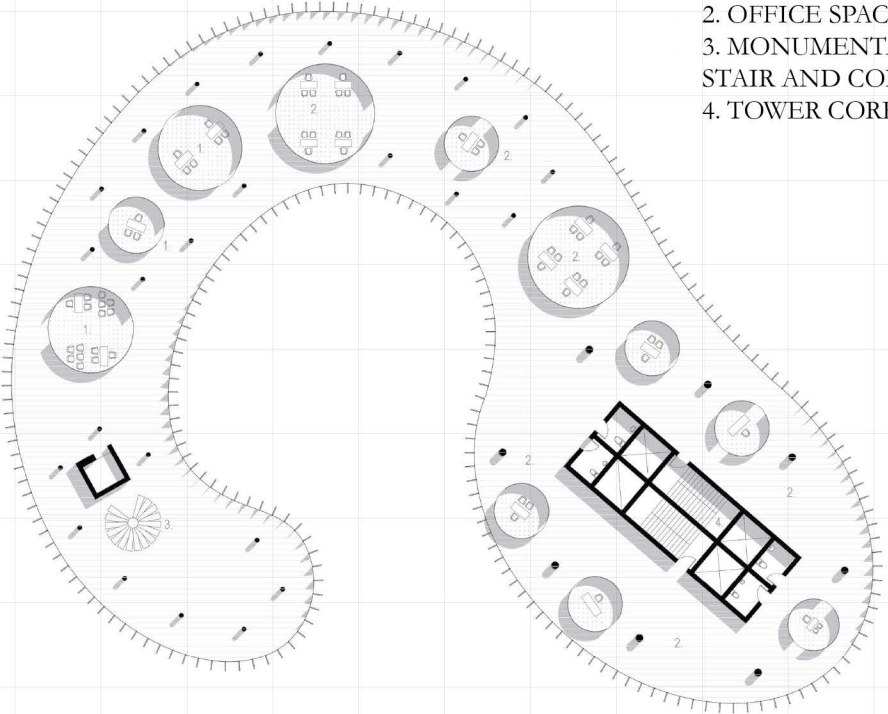
- KEY
- 1. CAFE
  - 2. TOWER ENTANCE
  - 3. WELCOME CENTER ENTRANCE
  - 4. CTA STATION
  - 5. BATHROOMS

GROUND FLOOR PLAN



- KEY
- 1. CLASSROOMS
  - 2. STAFF CABINS
  - 3. STUDY AREA
  - 4. WELCOME DESK AND LOBBY
  - 5. LIBRARY
  - 6. MONUMENTAL STAIR AND CORE
  - 7. TOWER CORE

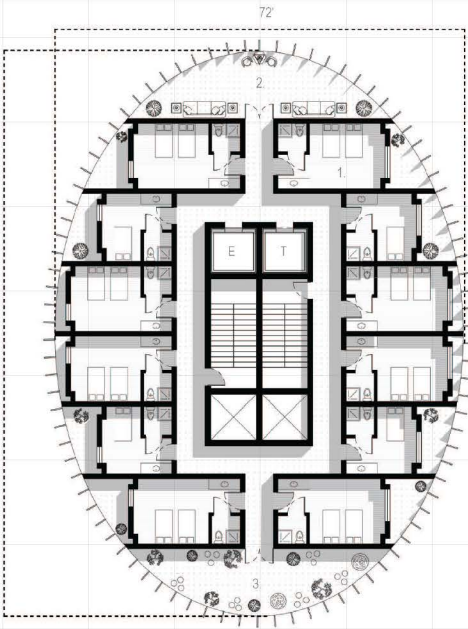
SECOND FLOOR PLAN - WELCOME CENTER



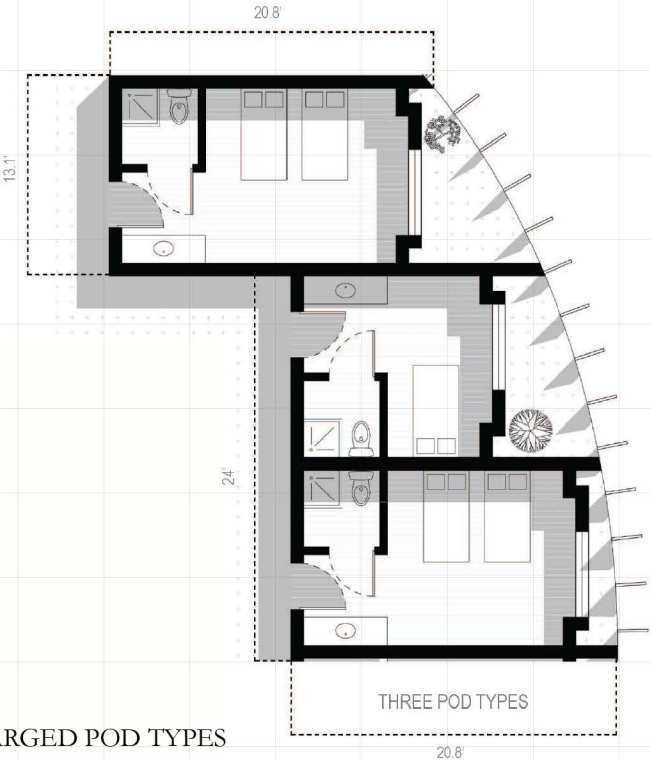
- KEY
- 1. MEDICAL STATIONS
  - 2. OFFICE SPACE
  - 3. MONUMENTAL STAIR AND CORE
  - 4. TOWER CORE

THIRD FLOOR PLAN - WELCOME CENTER

- KEY
- 1. PODS
  - 2. LOUNGE
  - 3. GARDEN

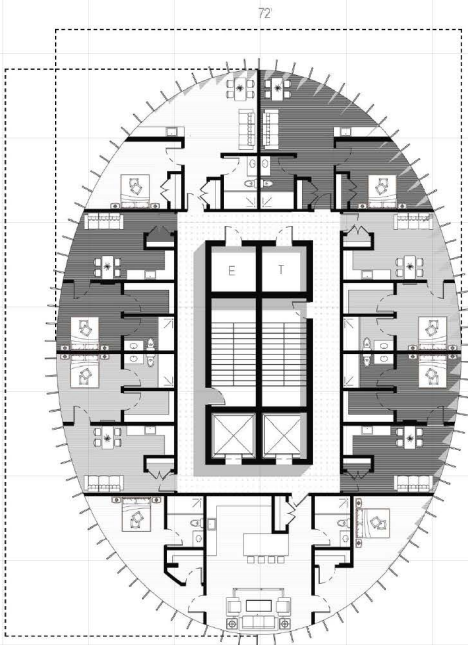


POD FLOOR PLAN

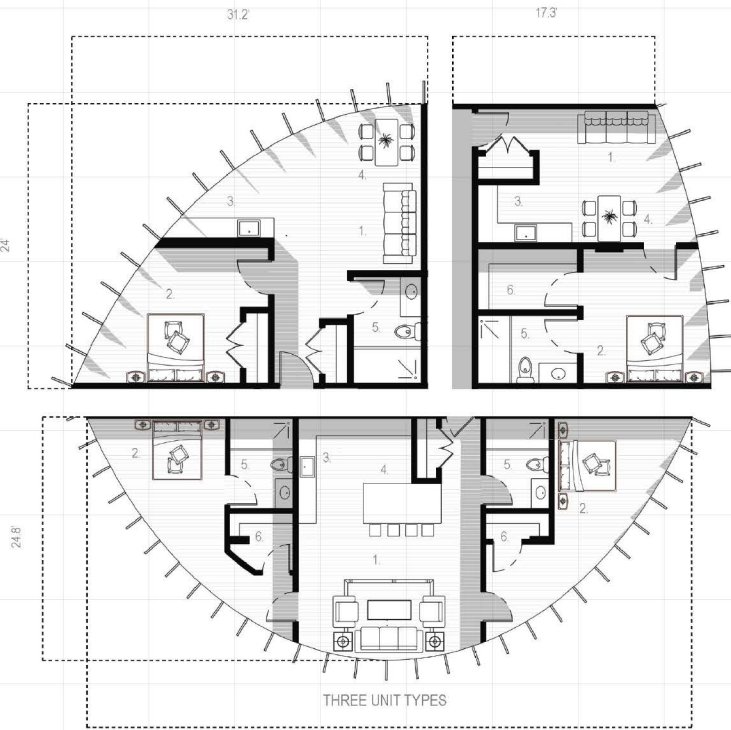


ENLARGED POD TYPES

- KEY
- 1. LIVING ROOM
  - 2. BEDROOM
  - 3. KITCHEN
  - 4. DINING ROOM
  - 5. BATHROOM
  - 6. STORAGE



RESIDENTIAL FLOOR PLAN



ENLARGED ROOM TYPES



EAST ELEVATION

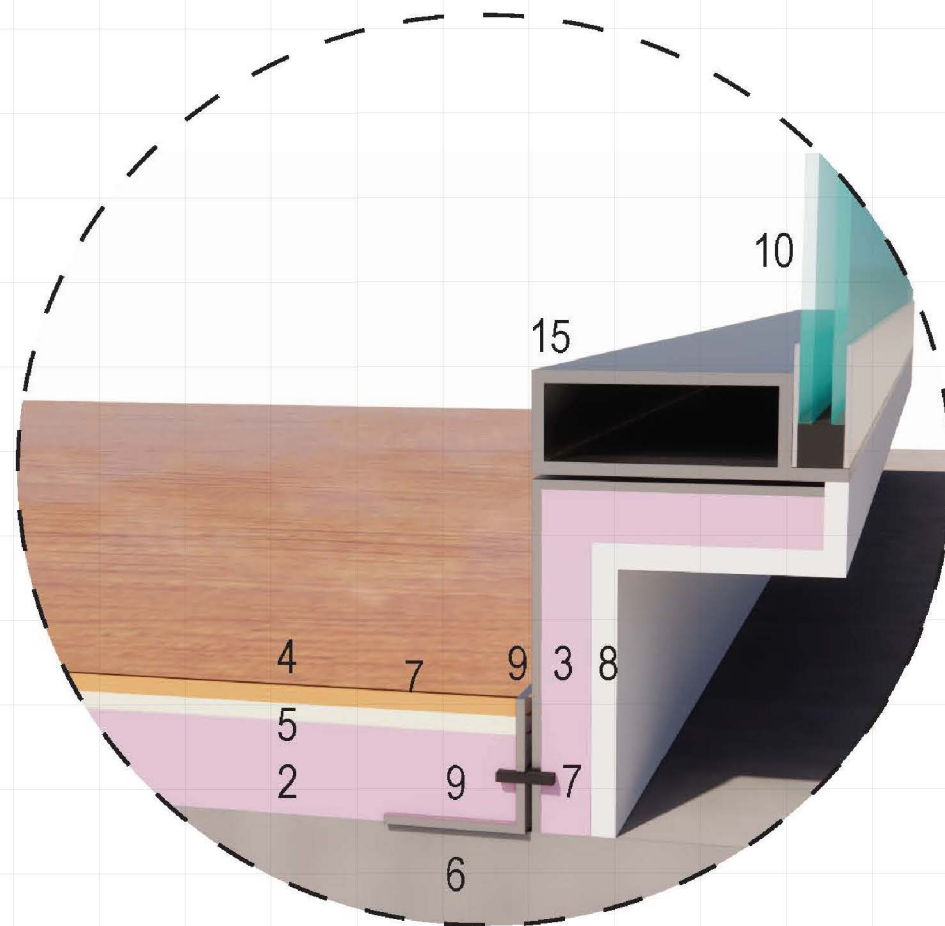
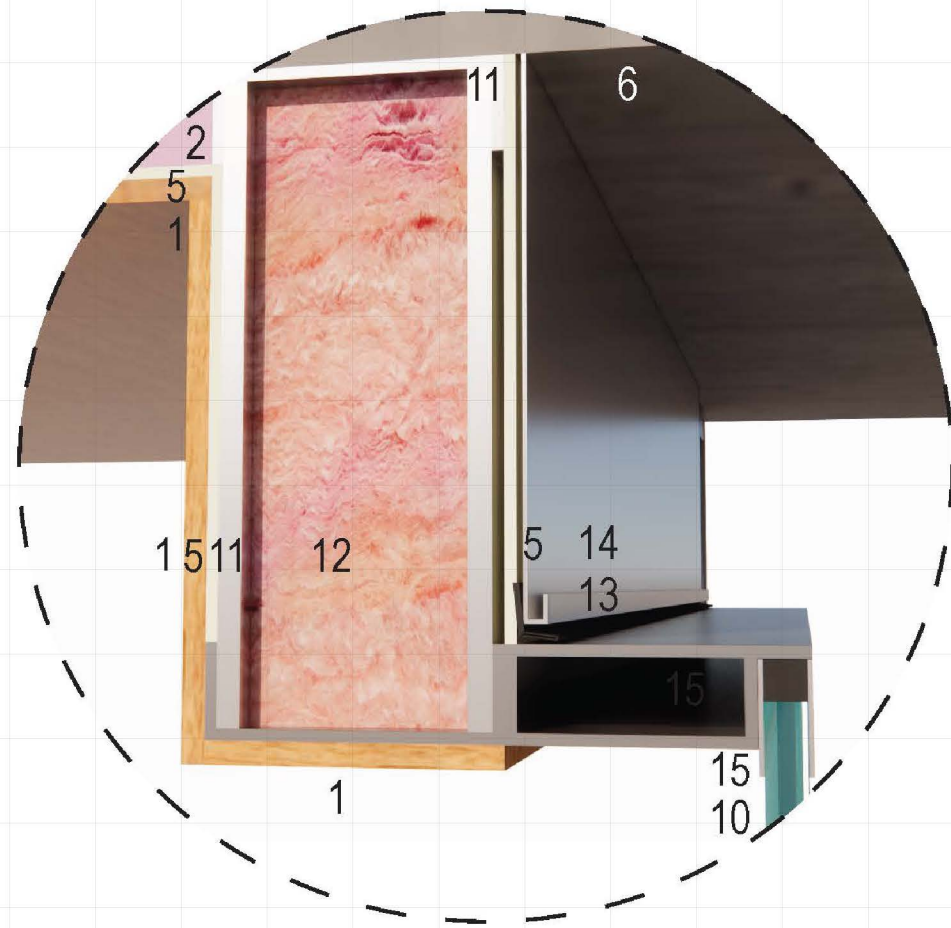


WEST ELEVATION





POD WALL SECTION DETAIL



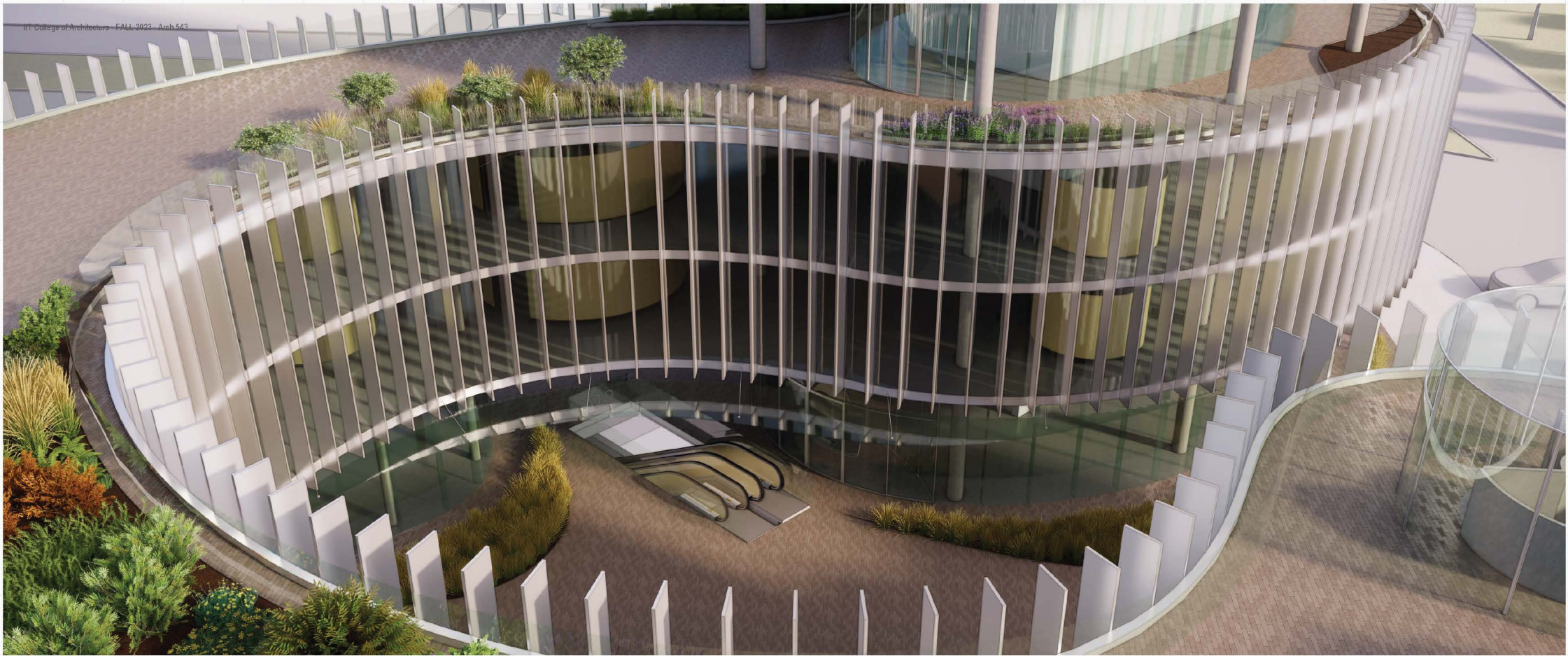
# KEY

1. 1/2" GYPSUM BOARD FINISH
2. 2" RIGID INSULATION
3. 1" RIGID INSULATION
4. 3/4" HARD WOOD FINISH
5. 5/8" SHEATHING
6. 8" CAST IN PLACE SLAB
7. BOLT
8. CLOSURE PIECE
9. METAL ANGLE
10. GLASS
11. 6" METAL STUD
12. BATT INSULATION
13. FLASHING
14. EXTERIOR FINISH - METAL PANELS
15. MULLION











# 06.

## A PATH TO

**SPRING 2025**

**INSTRUCTOR: VLADIMIR RADUTNY**

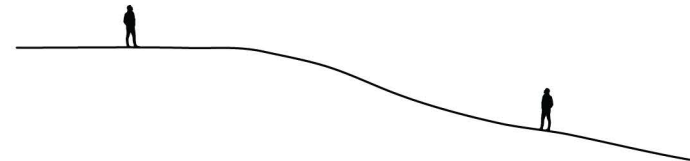
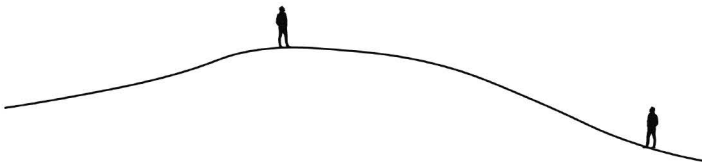
Nestled within the serene canopy of Warren Woods State Park, Michigan, A Path To is an elevated walkway designed to offer a quiet choreography through the forest.

Carefully weaving around the park's ancient beech trees, the path minimizes its impact on the natural environment, honoring the presence and history of the landscape. Rising and falling with the site's unique topography, the walkway invites visitors to experience the forest from shifting perspectives-ascending from the shadowed forest floor, through the dense canopies, and finally, to the sunlit emergent layer above.

Constructed from perforated, folded steel plates prefabricated off-site, the path maintains a lightweight, durable presence that subtly merges with its surroundings. Its railing height varies-lowering to frame moments of clarity and rising to conceal or protect-guiding both movement and gaze. A Path To is not just a means of passage, but a carefully attuned spatial experience that encourages reflection, attention, and renewed connection with the forest.











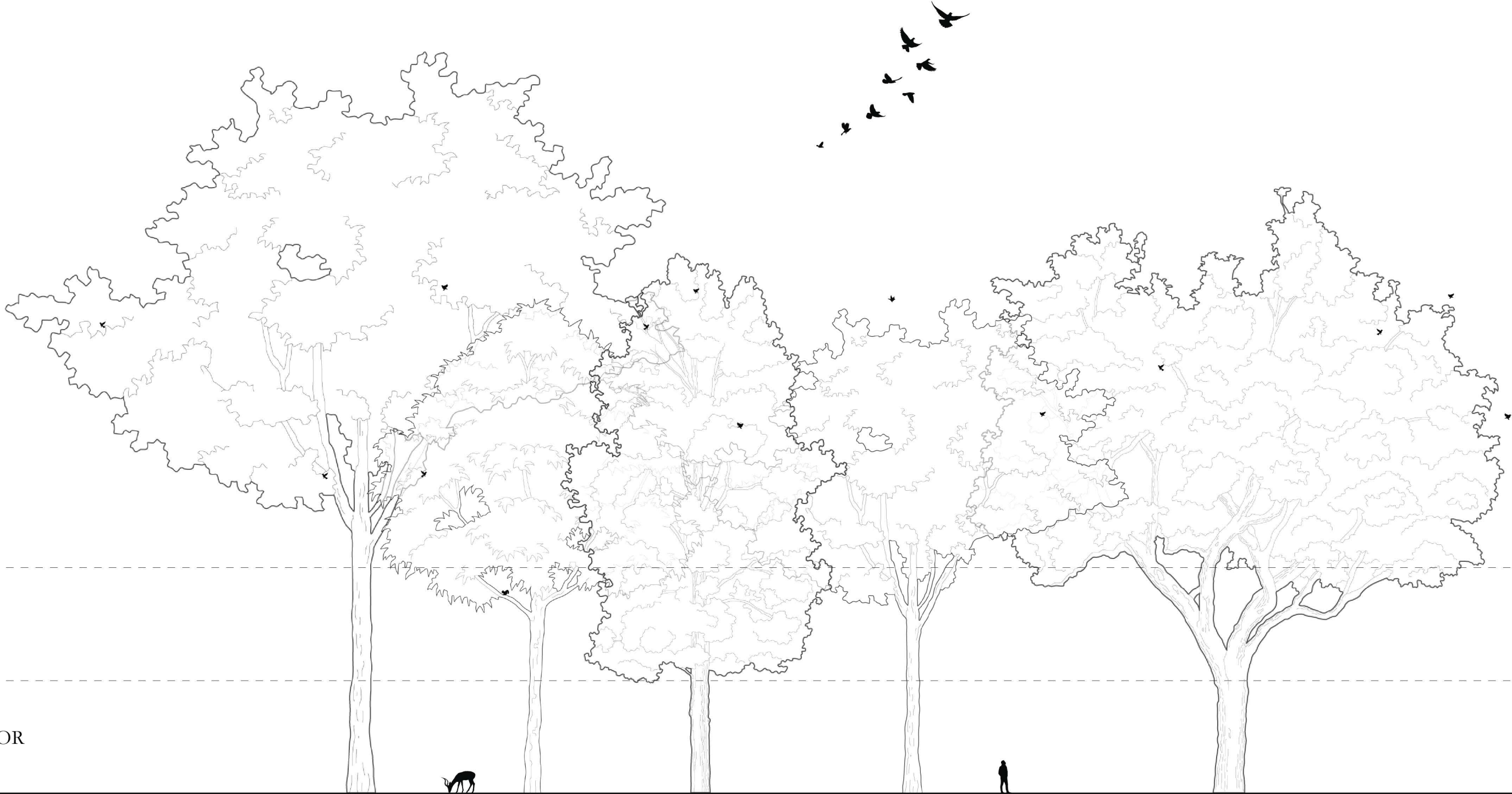
PROPOSED  
1.5 MILES

EMERGENT

CANOPY

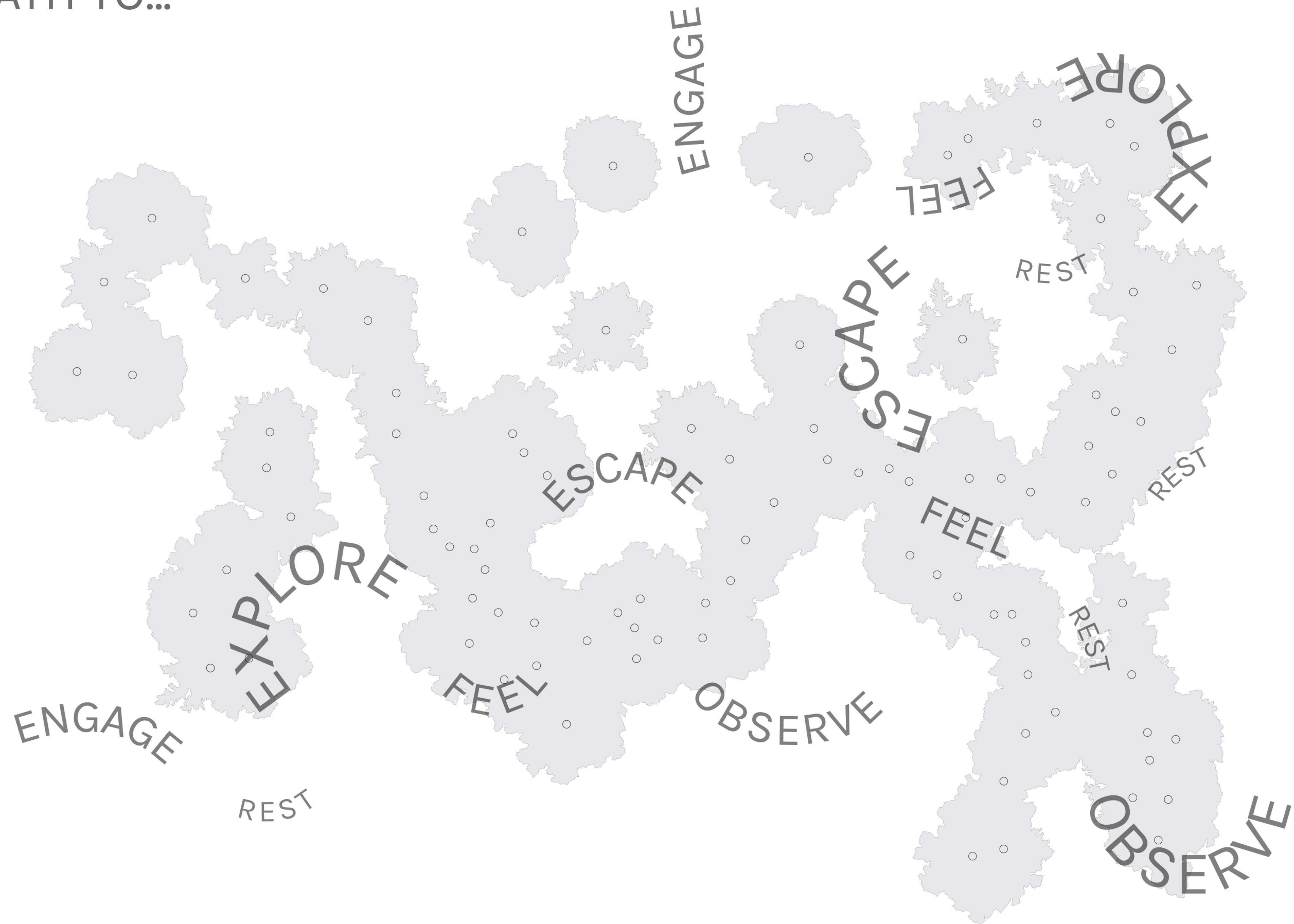
SUBCANOPY

FOREST FLOOR

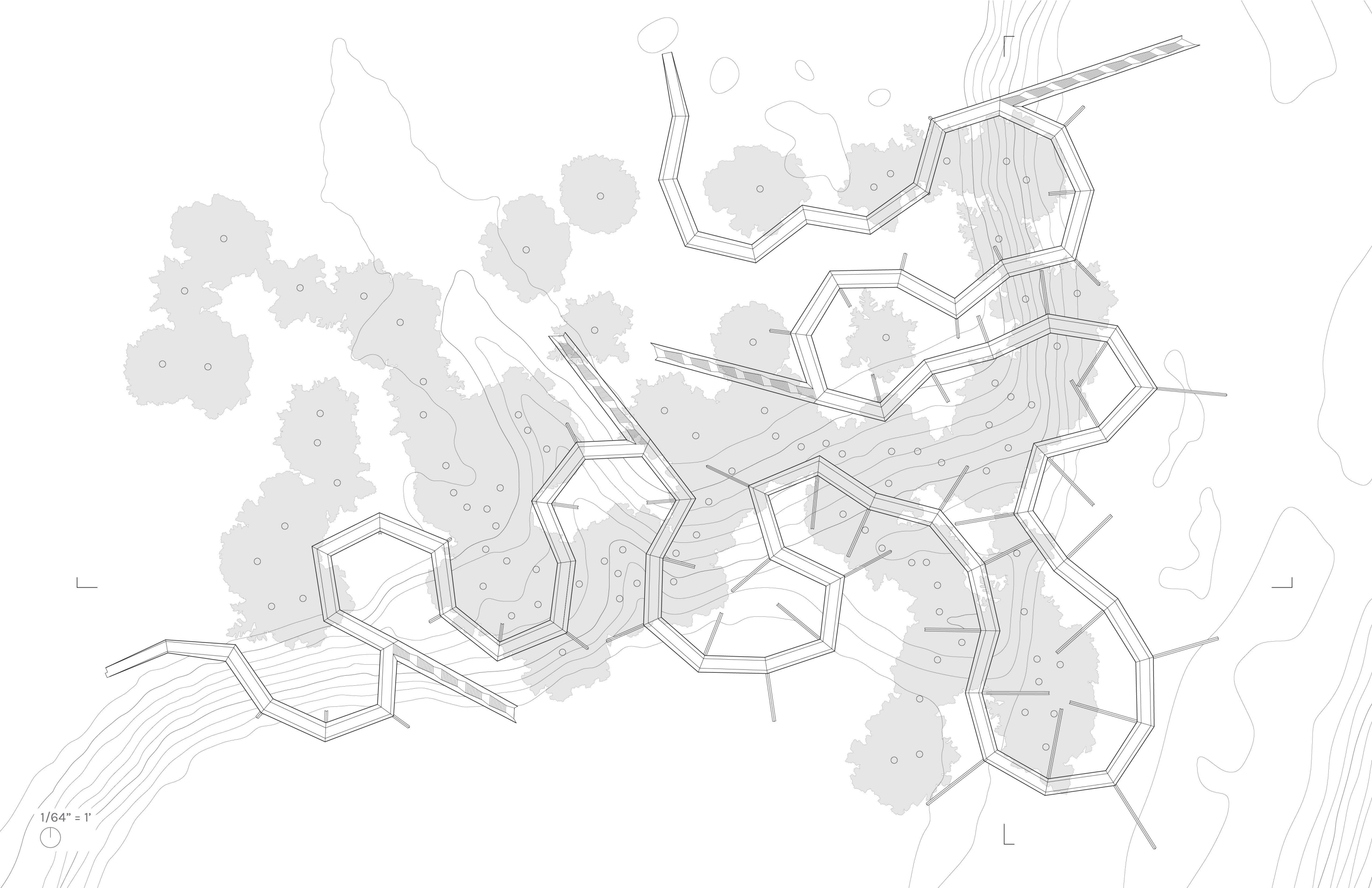




A PATH TO...



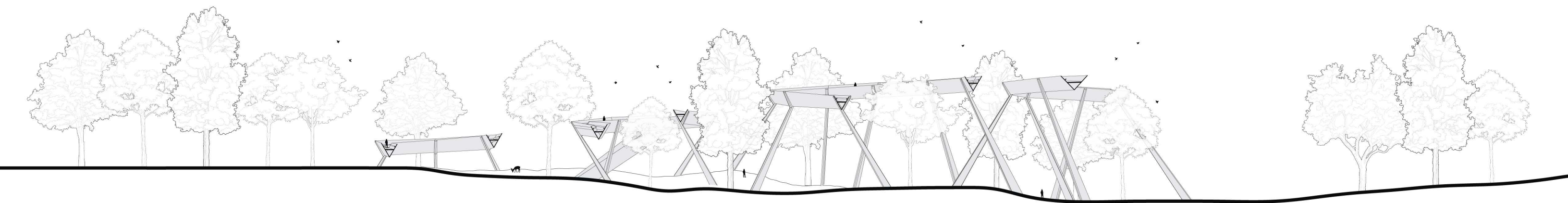




1/64" = 1'



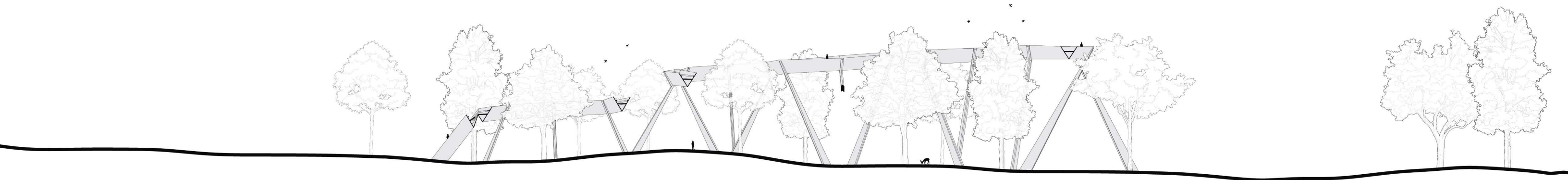
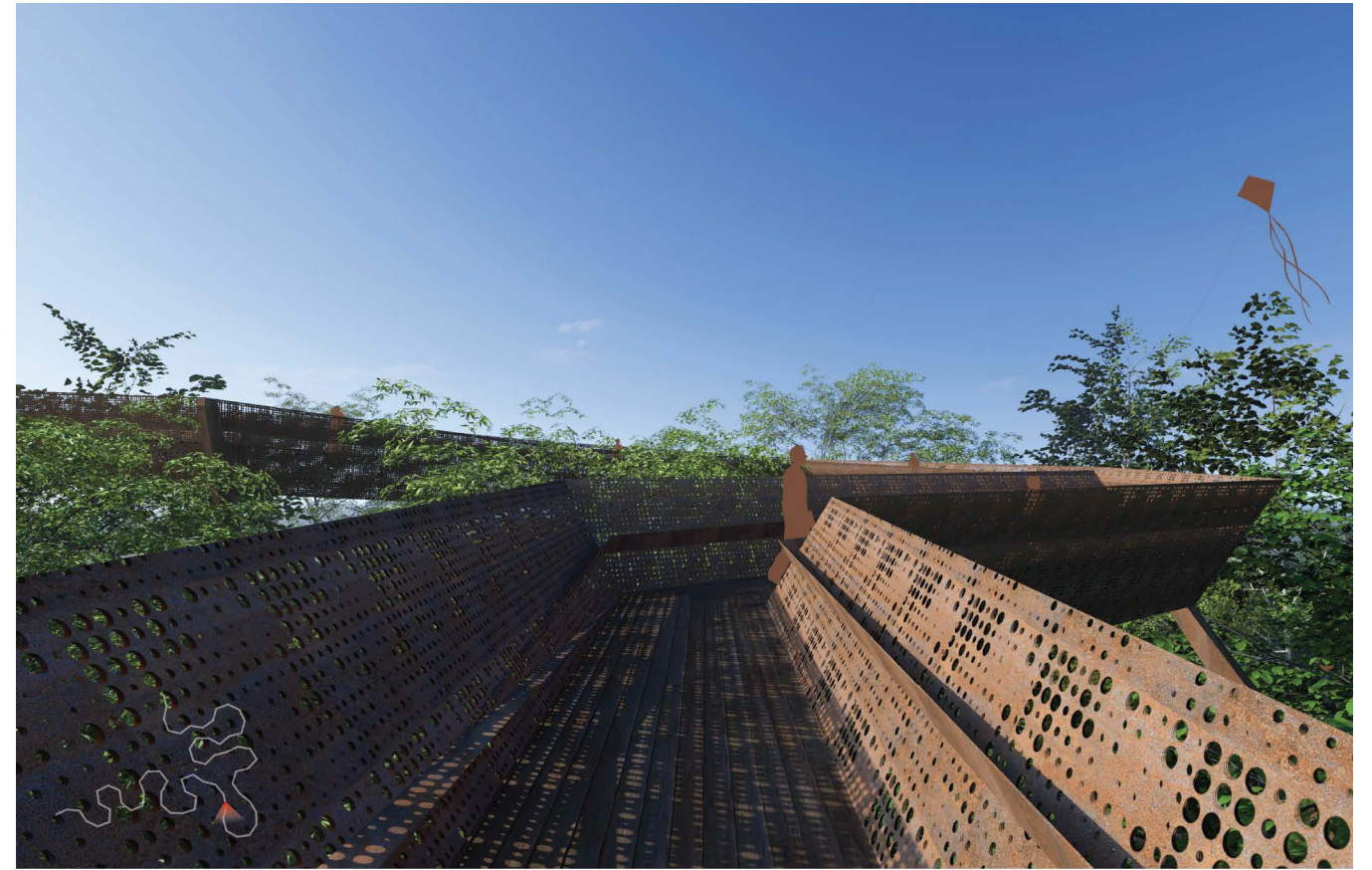




1/64" = 1'











# Supplemental Project

## FROM FLORA - FOR FAUNA

**SPRING 2025**

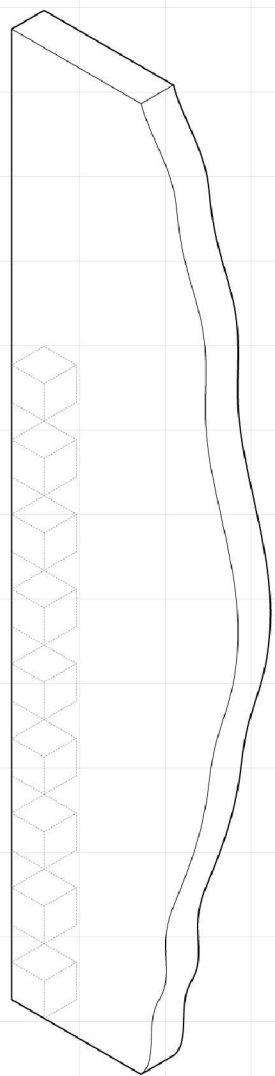
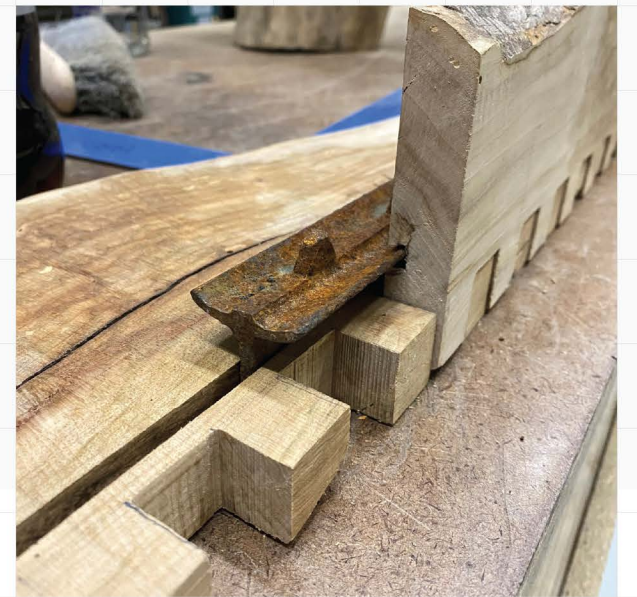
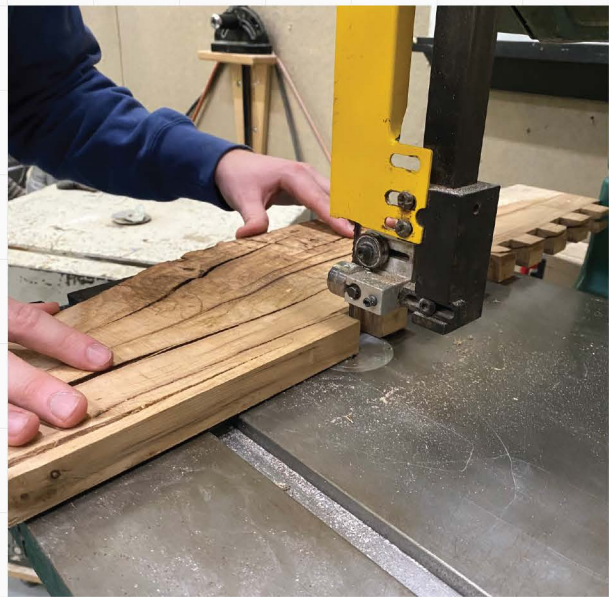
**INSTRUCTOR: VLADIMIR RADUTNY**

From Flora, For Fauna is a sculptural micro-habitat engineered to support a wide range of bird species that nest below ten feet, including open cup, cavity, and platform nesters. Constructed primarily from Pine and Maple, the structure is optimized to provide shelter, protection, and accessibility for diverse avian occupants across seasonal cycles.

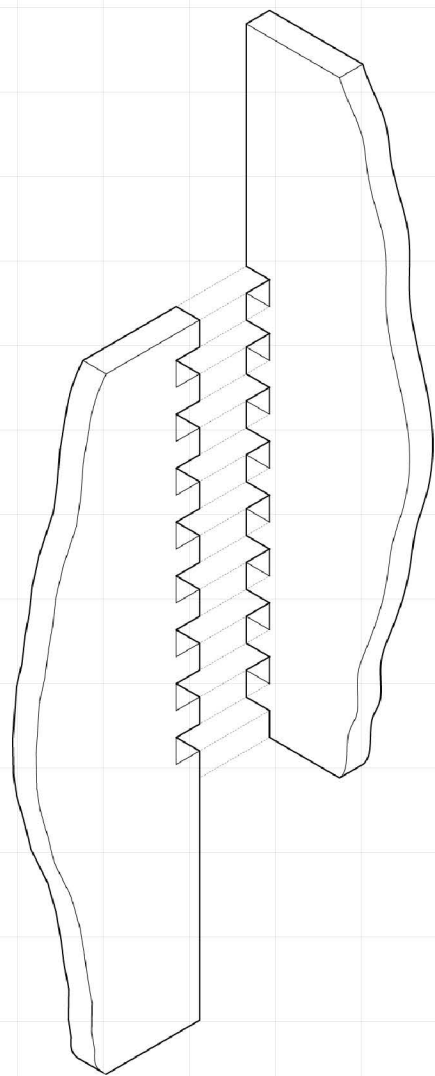
A key aspect of the project was its commitment to using exclusively found and reclaimed materials. This imposed a set of material constraints that directly influenced both the design logic and fabrication strategy. The available wood components exhibited a high degree of variability in dimension, condition, and surface quality—featuring warping, knots, discoloration, and structural inconsistencies. These imperfections required a flexible, iterative approach to construction, prioritizing joinery techniques that could accommodate irregularities while maintaining structural integrity.

Rather than forcing a uniform design language onto inconsistent material, the form of the habitat evolved through a responsive process of material-driven decision-making. This not only allowed for efficient use of salvaged resources but also resulted in a structure that inherently reflects the ecological values it promotes—adaptation, reuse, and integration with natural systems. From Flora, For Fauna demonstrates how design excellence can emerge through the constraints of scarcity and imperfection, aligning sustainable construction practices with ecological function and visual clarity.

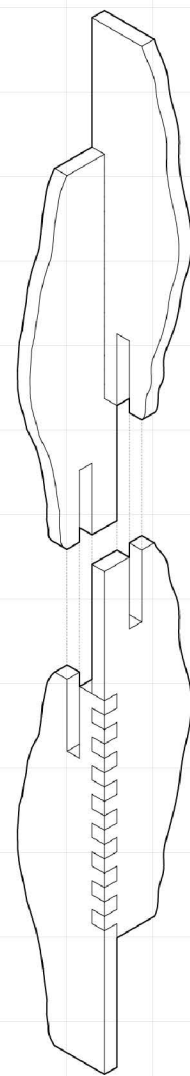




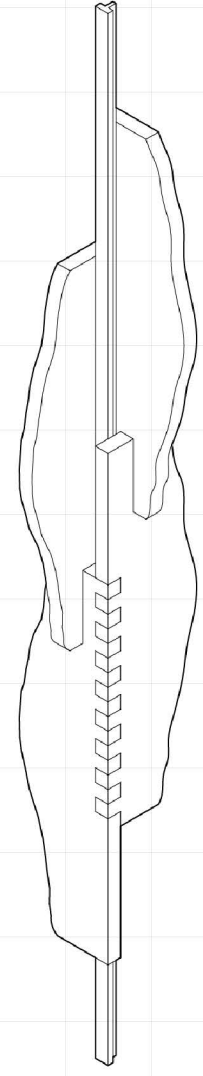
NOTCHING



INTERLOCKING



STACKING



INTEGRATING











Thank you!