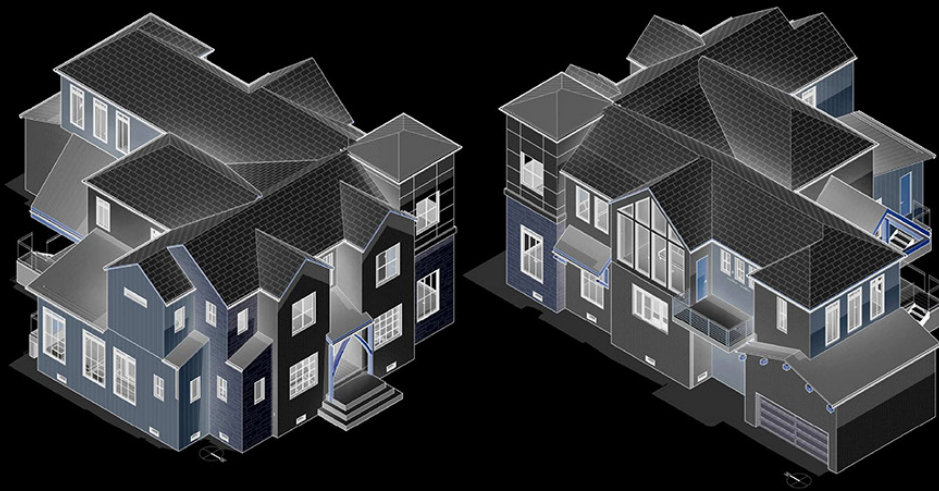


PORTFOLIO OF CONSTRUCTED WORK: 2025

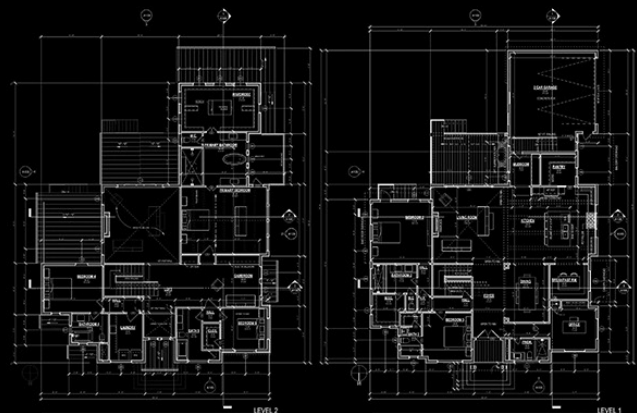
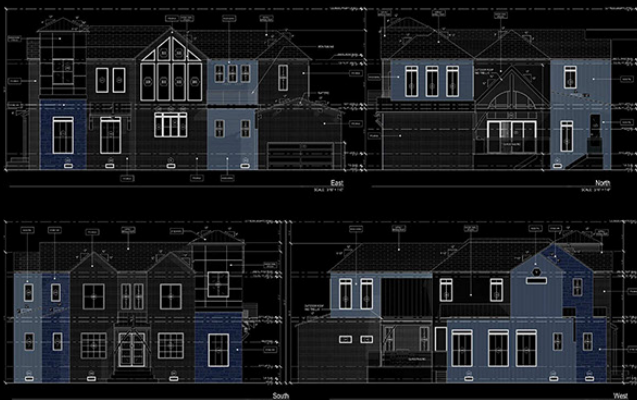
BRS.

Elevated Sustainability

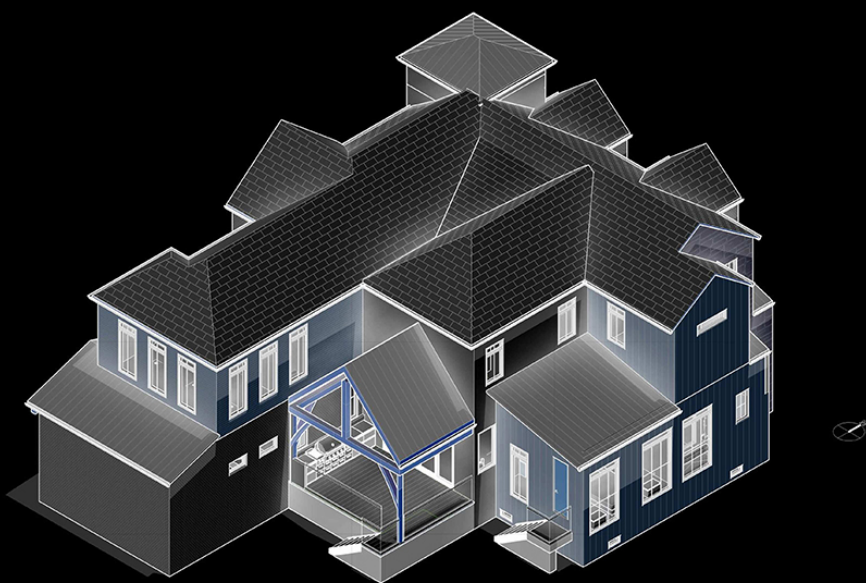
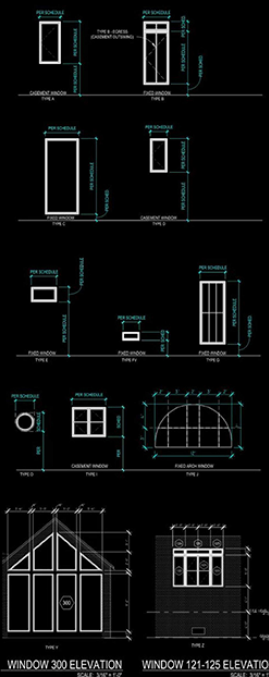
A high-end residence thoughtfully designed to minimize its carbon footprint within the doorstep of a natural sanctuary. Strategically nestled in nature without obfuscating the mountains, the form follows nature. With approximately 300 days of sunlight annually, the design prioritizes outdoor views while maintaining a shed roof and integrating sustainable, passive house principles.



The flexible layout allows for adaptable tenancy arrangements in response to local real estate trends. Wind and solar energy considerations are integrated into the building's massing, while the bedroom offers expansive views of the park and the mountainous western horizon.



The structure combines exposed wood beams with exterior masonry, creating a warm yet grounded aesthetic. Inside, floor-to-ceiling windows bring in abundant natural light from the east, enhancing the sense of openness and connection to the surroundings.

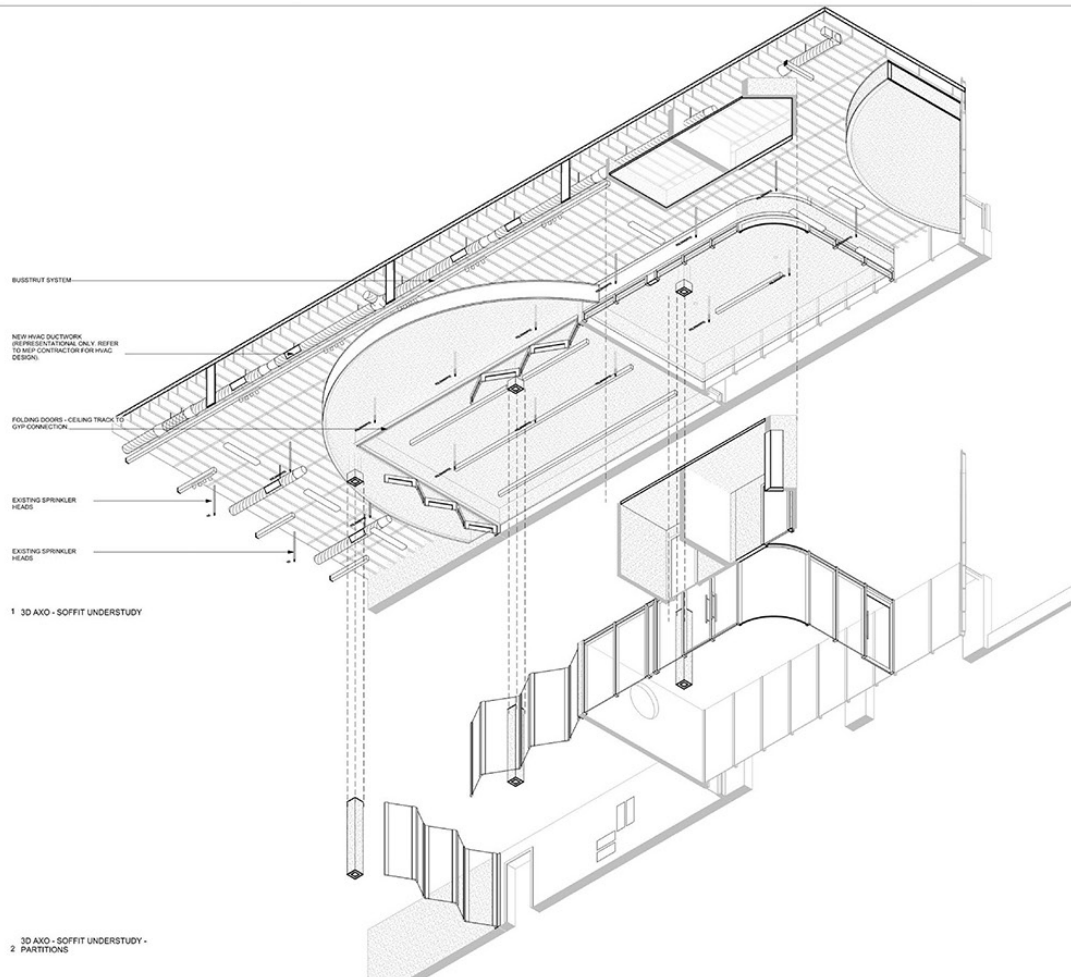


In the backyard, an open trellis frames a deck patio designed for casual outdoor living—ideal for grilling, lounging, and enjoying the natural setting.

Collaborators:
Lailey Khatibloo
Jazmine Marte Designs

BlueSpace Showroom – Renovation

Commercial



brianriverastudio
NEW YORK
LOS ANGELES
MIAMI
Aggregating Interior Professionals

OWNER:
OFFICE SOLUTIONS
YORBA LINDA, CALIFORNIA

CONSULTANTS:
ILLUM LIGHTING DESIGN
805.696.5605
501 E. Guadalupe
Santa Barbara, CA 93103
MARIO ROMANO WALLS
ROMANO STUDIO LLC
310.243.1987
2314 Michigan Ave
Santa Monica, CA 90404
TEKNIUM CORPORATION
1150 Pine Road
Toronto, ON M3J2J5
Canada
Tel. 416.661.3370
www.teknum.com

PROJECT ADDRESS:
OFFICE SOLUTIONS
1ST FLOOR
23300 LA PALMA AVE, YORBA LINDA, CA
92887

DRAWING TYPE:
SOFFIT DIAGRAM

SEAL & SIGNATURE:	DATE:	6/5/2024
	PROJECT NO.:	9643
	SCALE:	
	DRAWING NO.:	A503

A showroom for high-end office furniture and lighting design: this interior renovation merged the worlds of commercial retail space and residential trends. Designed exclusively by Brian Rivera Studio in Yorba Linda, California using the views of the mountains as influence for the slopes and forms of the architecture.



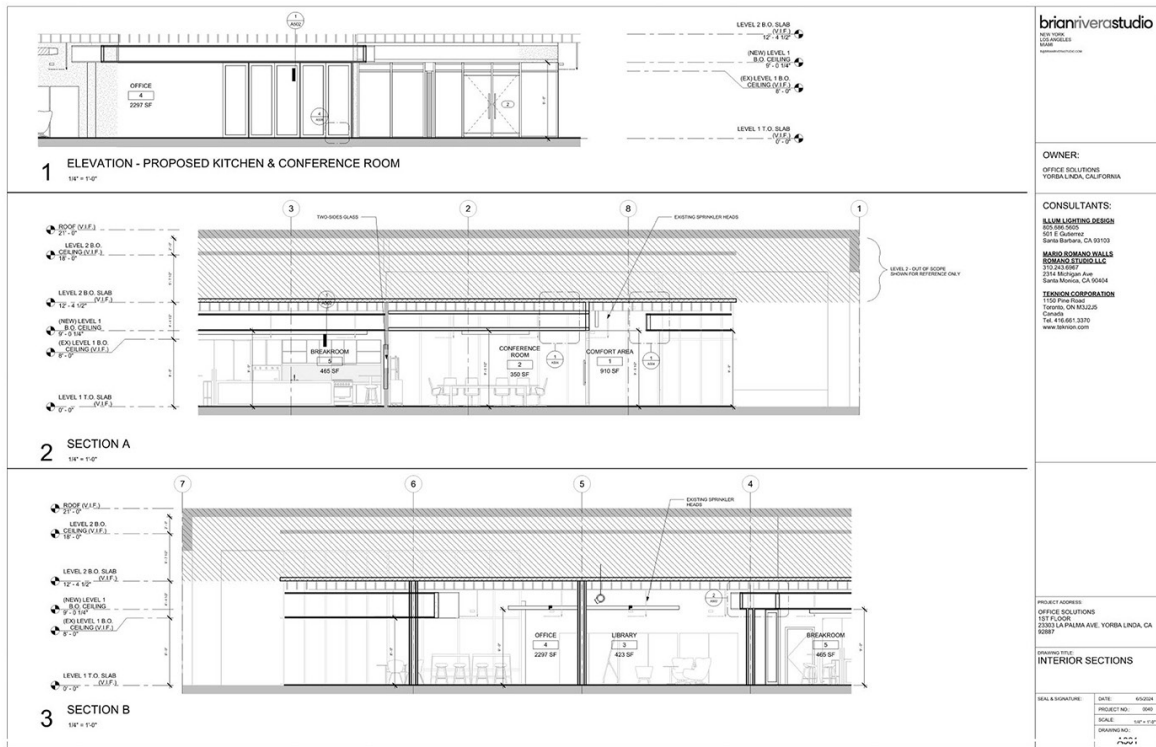


The curved soffits in the new design posed as a challenge to the integrity of the project, given the existing sprinkler heads and joists. These existing condition elements could not be relocated or removed without interfering with the structural integrity of the building, ultimately informing the soffit design.

Interior Architecture

After a year of collaboration with an LED wall art installer, electrical contractor, kitchen designer, and furniture designer, the final product was born: an open flexible showroom fit for the modern, high end commercial client. Currently under construction, it's slated to finish in early 2025 with electrical and studs already in place.









Hope Ranch Residence

A 4-Year project that began as a concept for a permanent waterfront haven.

Transforming the needs of a growing family and evolving smart home technology meant a shifting design that was flexible but functional. From the basement level to the second story terrace: all spaces are interconnected, weaving in and out of a tapestry of views of Santa Barbara's coast.

Altogether, a careful blend of contemporary stone, stucco, and Santa Barbara sandstone brings this home to life.



Located in Santa Barbara, California, the view offers mountains to the East and the water to the West. This helped orient the residence so that the views were maximized.

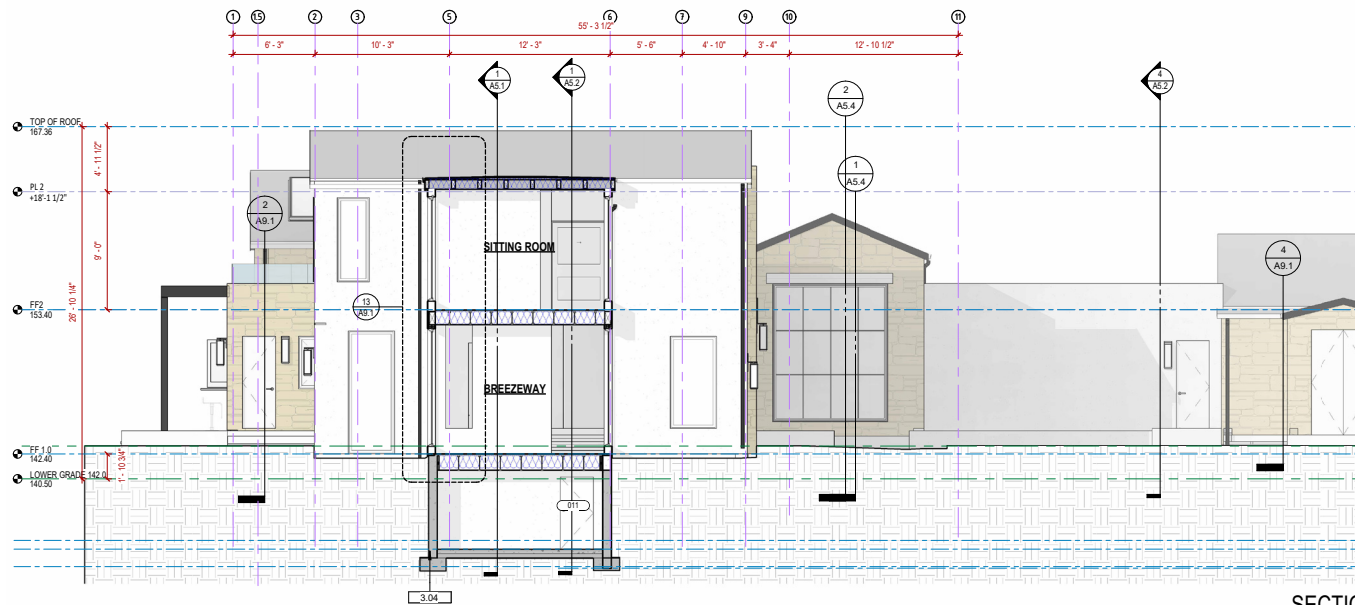
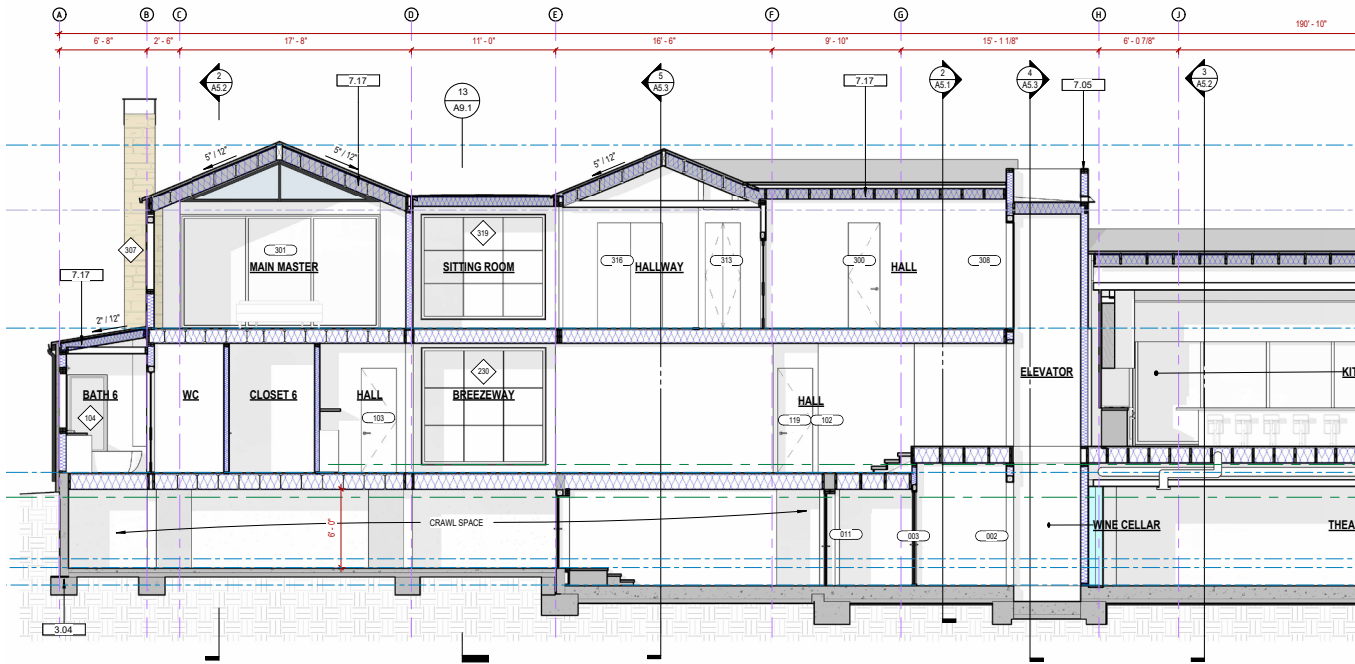


Aside from the main house is the cabana and an ADU/Garage, located on opposite ends of the site. This makes the 20,000 square foot home a campus within a 5 acre site, with a horse ranch and path that leads down to the water.



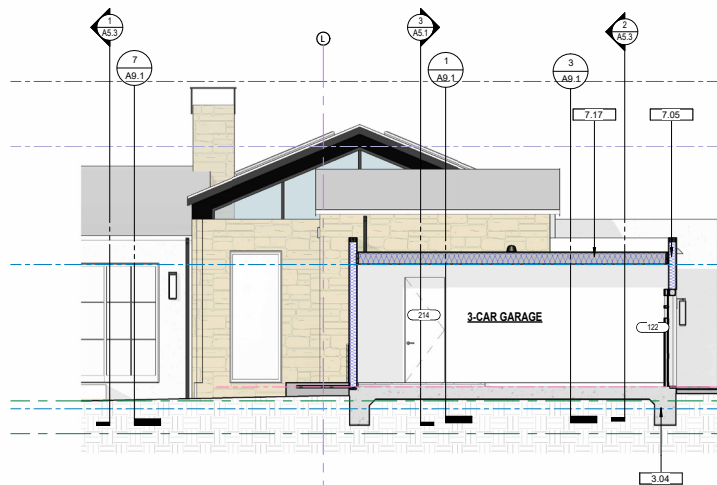


Project Architect: Kate Svensson Design LLC
 Structural Engineers: NSE Engineering
 Construction: 2025

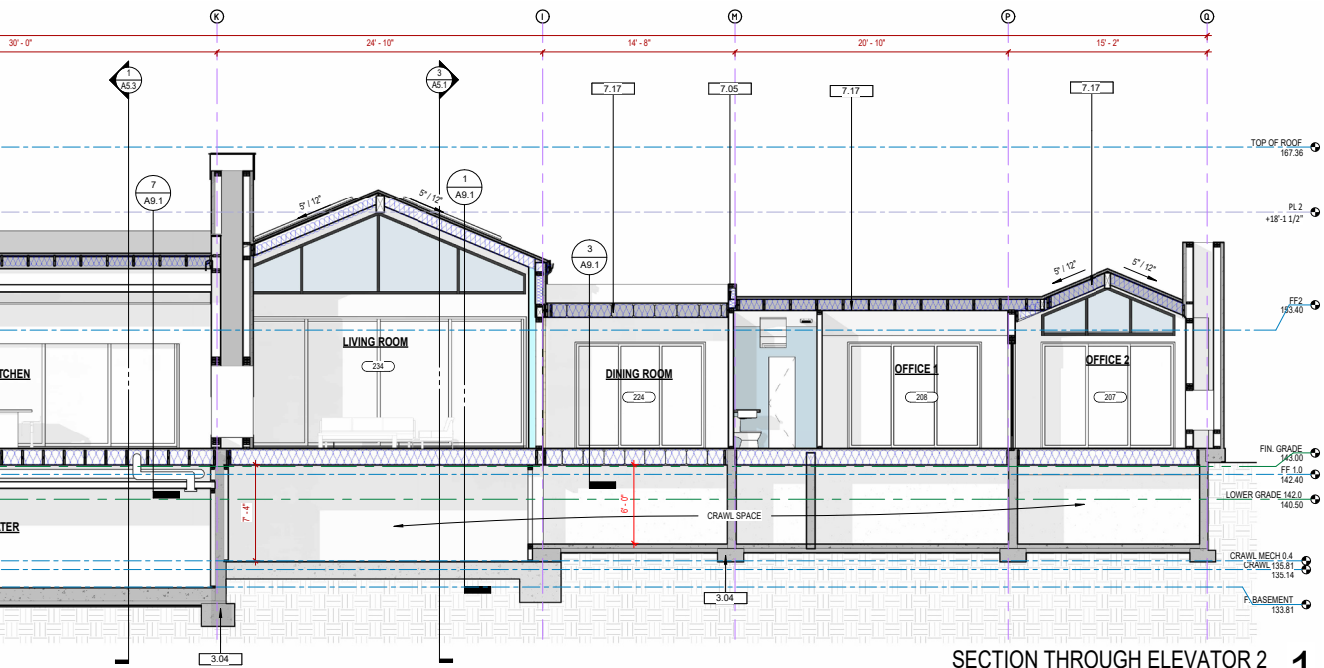


KEYNOTES

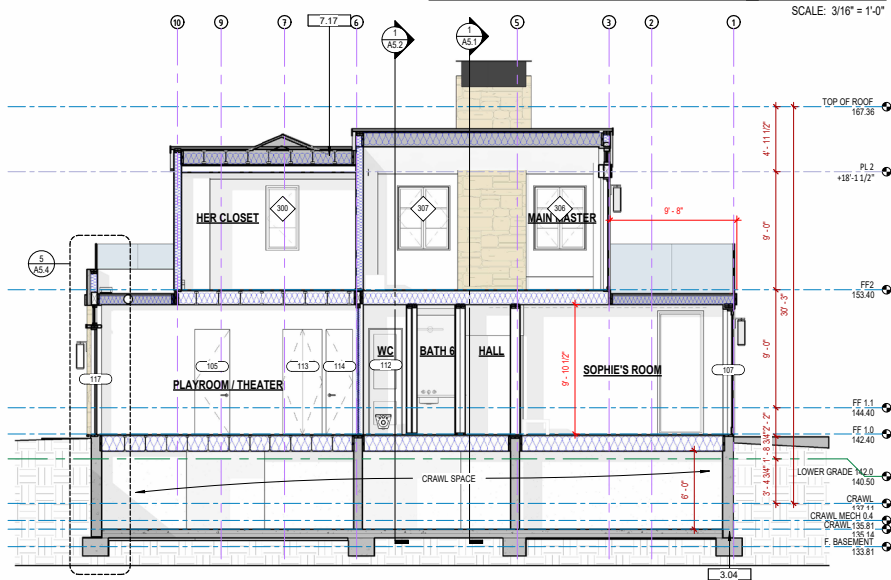
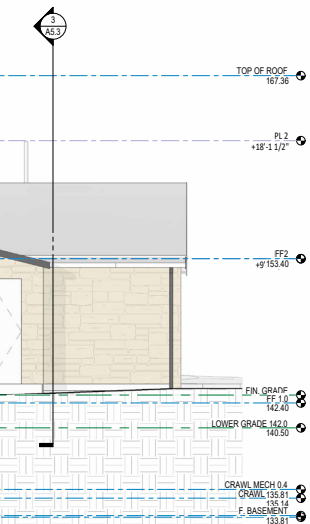
XXX	KEYNOTE DESIGNATION
3.04	CONCRETE FOOTING. SEE STRUCTURAL DRAWINGS.
7.05	THERMAL INSULATION (THICKNESS AND R-VALUE PER T24 CALCULATIONS).
7.17	OPEN CEILING NON-ABSORBANT, AIR-IMPERMEABLE CLOSED CELL SPRAY FOAM INSULATION. SEE TITLE 24 CALCULATIONS.



SECTION THRU

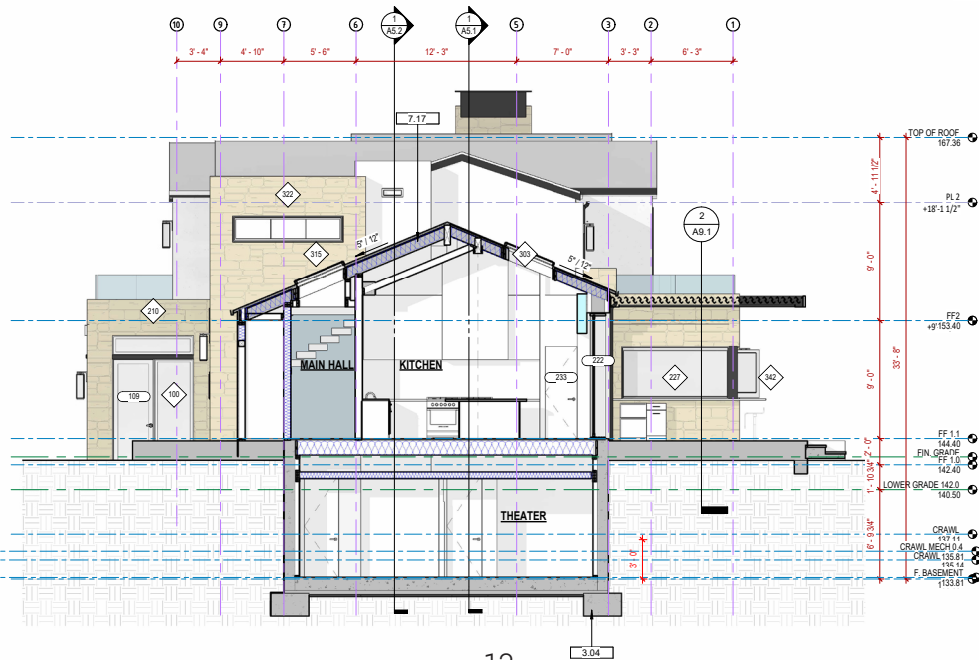
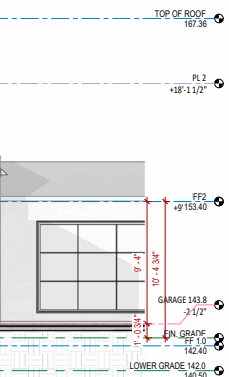


SECTION THROUGH ELEVATOR 2 1
SCALE: 3/16" = 1'-0"



SECTION THROUGH WEST WING 2
SCALE: 3/16" = 1'-0"

SECTION THROUGH BREEZEWAY 5
SCALE: 3/16" = 1'-0"



SECTION THROUGH GARAGE 1 4
SCALE: 3/16" = 1'-0"

Mixed-use Retail and Commercial Development

Ground Up Office Building with Shopping Spaces Located in Central Boise, Idaho

The newly completed shopping mall and four-story office center in central Boise, Idaho, represents a transformative urban development designed to reimagine a once-industrial landscape into a dynamic civic and commercial destination. Situated at the heart of a major intersection previously dominated by factory warehouses, this project is the result of a four-year design and development collaboration between a prominent national developer, the City of Boise's planning and urban design authorities, and the surrounding community. Officially completed in 2023, the project sets a new benchmark for mixed-use design, pedestrian-first planning, and technologically advanced public engagement.



Spanning an impressive footprint, the site includes 120,000 square feet of Class A office space, distributed across four levels of high-ceiling, daylight-optimized floorplates. This office center is tailored to attract a wide range of tenants, from innovative tech startups to established corporate firms, offering flexible layouts, integrated smart building systems, and panoramic views of Boise's evolving skyline. The commercial levels are supported by state-of-the-art mechanical, electrical, and HVAC systems, meeting and exceeding LEED standards, while interior finishes blend industrial character with modern elegance — a subtle nod to the site's historical past.



At the street level, the retail experience anchors the development with a thoughtfully curated mix of flagship stores, boutique retail, and dining concepts, aimed at serving both the daytime office population and surrounding residential communities. The building's south-facing façade features an iconic, programmable LED lightshow and digital advertisement array, making it a visual focal point of the district and a beacon for nighttime activity. This high-tech display system is seamlessly integrated into the building envelope, engineered to minimize light pollution while maximizing creative potential for brand activations, community messaging, and seasonal shows. Urban connectivity was a central pillar of the master planning process. The project occupies a pivotal site at the confluence of several transit corridors and sought to restore the pedestrian experience in a previously underutilized zone. A comprehensive traffic study informed the introduction of new signalized intersections, curb extensions, widened sidewalks, and ADA-compliant crosswalks that encourage pedestrian and cyclist movement while regulating vehicular flows. Drop-off zones, rideshare hubs, and micro-mobility stations enhance the accessibility of the site, promoting a car-optional lifestyle in support of the City of Boise's long-term sustainability goals.

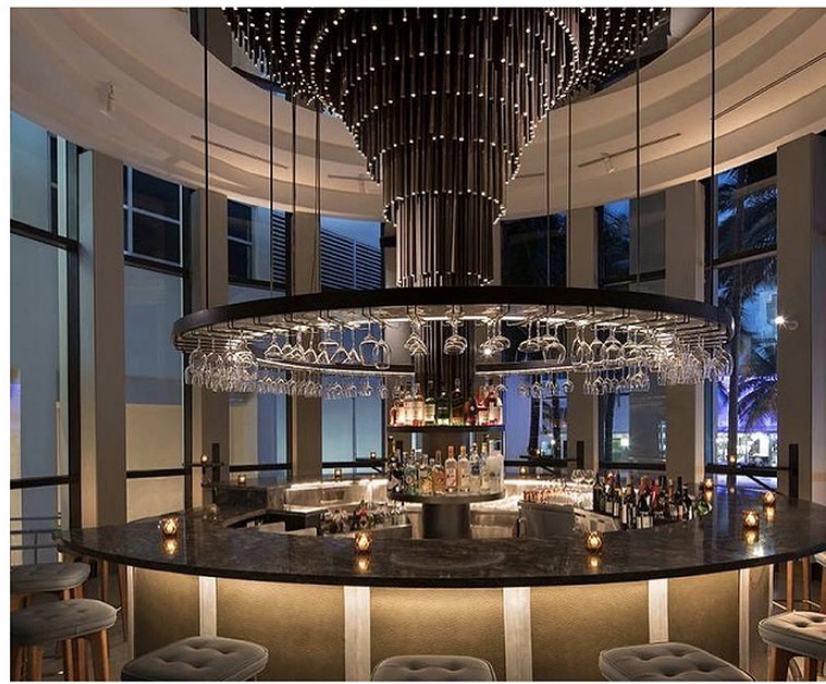


Designed in close collaboration with city officials and with extensive public feedback, the architectural language of the development embraces a contemporary aesthetic rooted in Boise's western heritage. Materials were sourced regionally where possible, and the massing strategy of the buildings prioritizes human scale and daylight access. Street-level transparency, art-infused public spaces, and shaded pedestrian promenades contribute to a vibrant sense of place that supports both economic activity and community gathering.

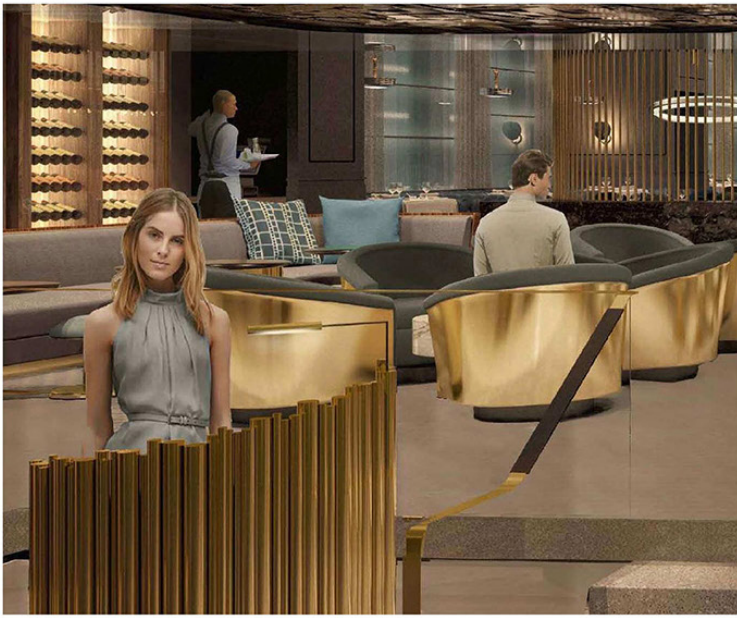
This mixed-use hub is more than just a commercial destination — it's a reactivation of urban potential. It honors the industrial legacy of the site while embracing the vitality of Boise's future. Through disciplined planning, advanced technologies, and inclusive design, the project has become a model for sustainable and equitable urban redevelopment in the Pacific Northwest.

Tatel Restaurant at the Ritz Carlton

A luxury design for a celebrity client's restaurant in Miami Beach.



Faced with challenges from the South Beach Neighborhood Council and Miami Beach Landmarks — we fought tooth and nail to get our design approved. We worked meticulously on planning committee presentations, emphasizing the unique features of the chandelier above the bar and its connection to Miami's Art Deco skyline.



Located in the Ritz Carlton Miami Beach — this Art-Deco lined street in South Beach is fraught with tourists. We carefully preserved elements of local architecture and waterfront features, blending locality with hospitality.

