

WELCOME



HI, I'M NONSO, AN ARCHITECTURAL DESIGNER. I CREATE USER CENTERED SPACES , WITH KEEN EYE FOR DETAIL. WITH GOOD DESIGN PHILOSOPHY,THE OUTCOMES ARE BOTH FUNCTIONAL AND BEAUTIFUL. BEYOND ARCHITECTURE I ENJOY FOOTBALL AND MOVIES

CONTENT

1. SKILL ACQUISTION CENTER
2. STUDENT CENTER
3. WATERFRONT PARK
4. ARTIST RESIDENCE
5. RESORT AFRICANA



OVERVIEW

The center comprises of 15 skills, spread across 3 buildings. the center is aimed to help reduce the large population of person unemployed in the region. The center teaches skills that vary from simple machines to power tools, which in turn help to establish small businesses. The buildings are designed to operate in hot and humid climates , noise generated from the workshop equipment are all considered.



Administrative Block



Allocated
space for
cafeteria

**Workshop
Blocks**



A community based approach, this was achieved by the fragmentation of a single piece to different units.

The architectural advantage of this was that reduced the building size , making it less bulky and adequate circulation within each space for both machines and people.

15 programs in total, 8 of these were zoned away into **Workshop block** due to there high noise generation and outdoor activity, while 7 were incorporated into the **Administrative block**.

The site includes a cafeteria and parking for both bikes and vehicles , and recreation spots . The administration building consists of 7 training programs, and the handles the administrative sector of the institution.

STUDENT



CENTER



OVERVIEW

Recreation centers need to be light in terms of vibrance and tone. The building lets enough light via skylight and with large fenestration, wayfinding is easy with close exists.

The building responds well to climate as the materials are apt for hot and humid climate and power sustainability through the use of photovoltaic glass for the skylight.



The entire facility is designed to cater for students staff alike and encourage campus activities beyond classrooms. The center can also serve as an interest point to prospective students





W
A
T
E
R
F
R
O
N
T

P
A
R
K

+

OVERVIEW

As apart of the university's development plan ,a water park was proposed to provide a unique and engaging recreational space for students. The designs utilises the Otammiri river that runs through the university, and also flows the landscape. The design features a beach front, restitution center and indoor recreational spaces





A RESIDENCE T

S

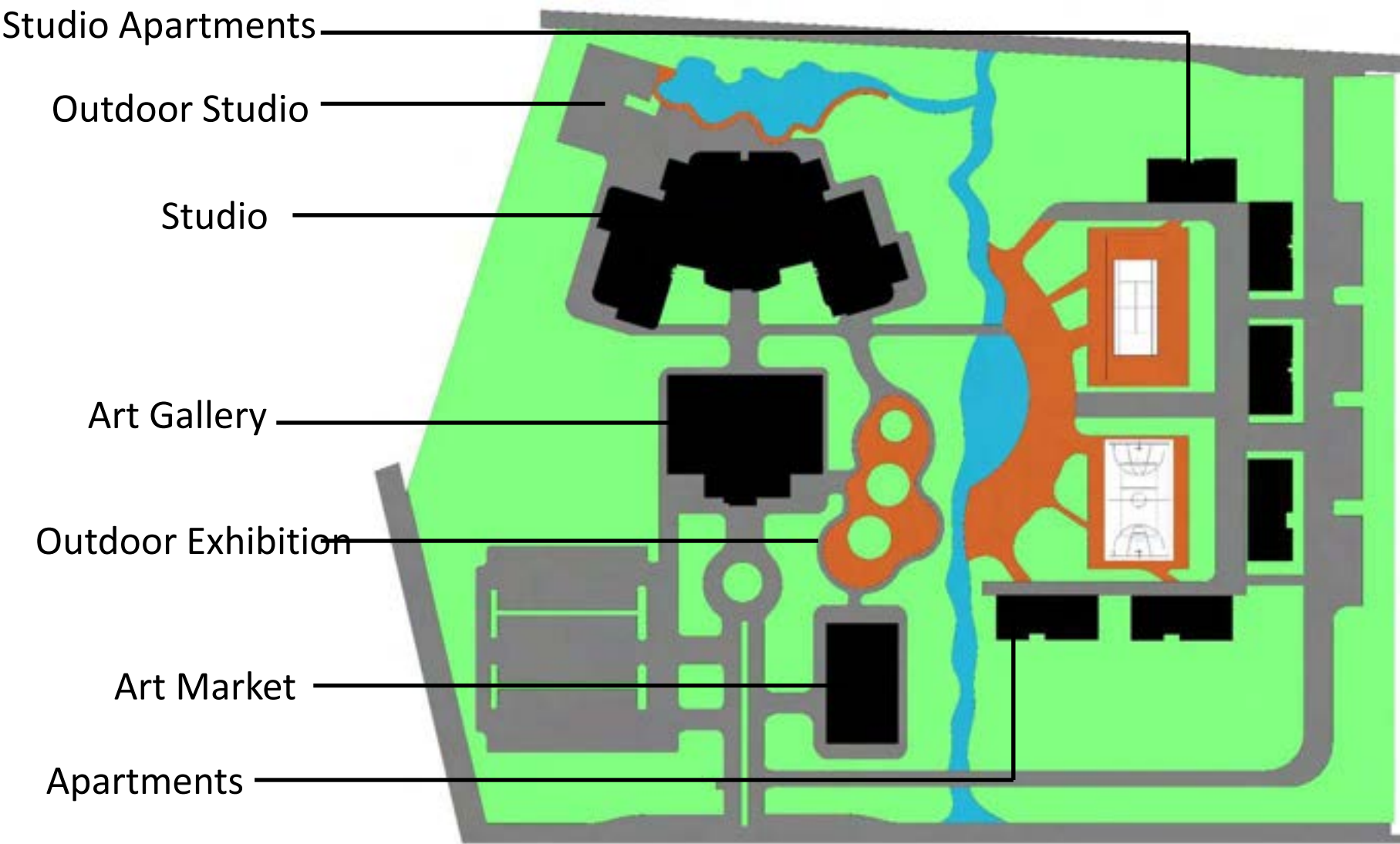


OVERVIEW

An Artist Village, a vibrant and inclusive community dedicated to fostering creativity, collaboration, and cultural exchange amongst artists. This village serves as a hub for artists from Nigeria and beyond, providing a supportive environment where they can live, work, and thrive. With sustainability



in mind, incorporating green building practices, renewable energy sources, and water conservation measures. The village will strive to minimize its environmental impact while maximizing its social and cultural contributions.

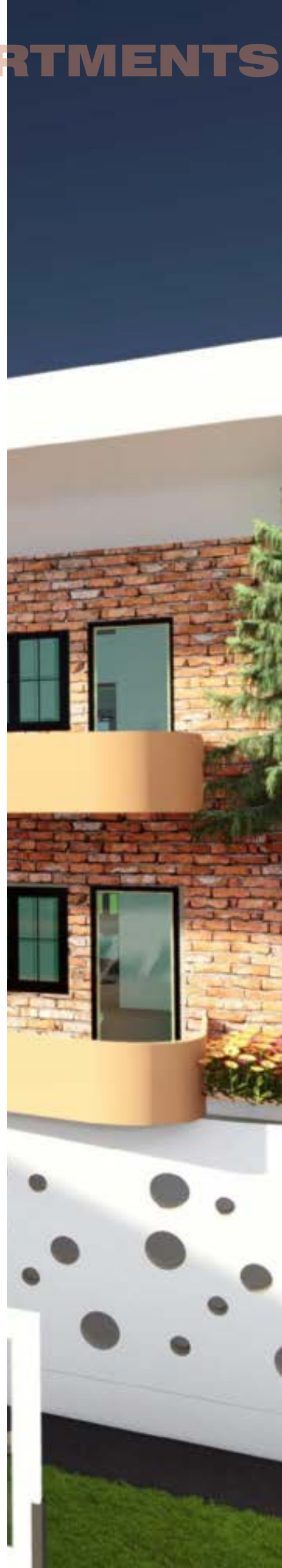
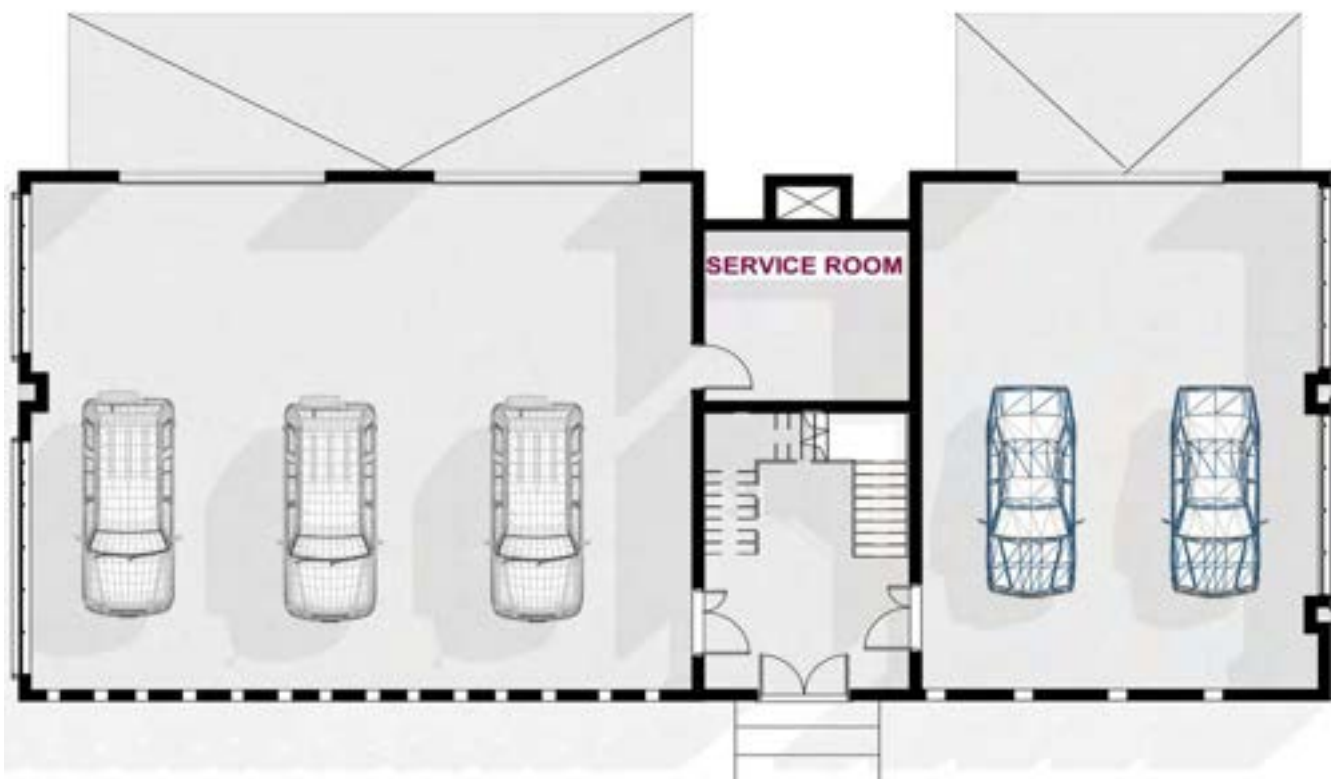




APARTMENTS



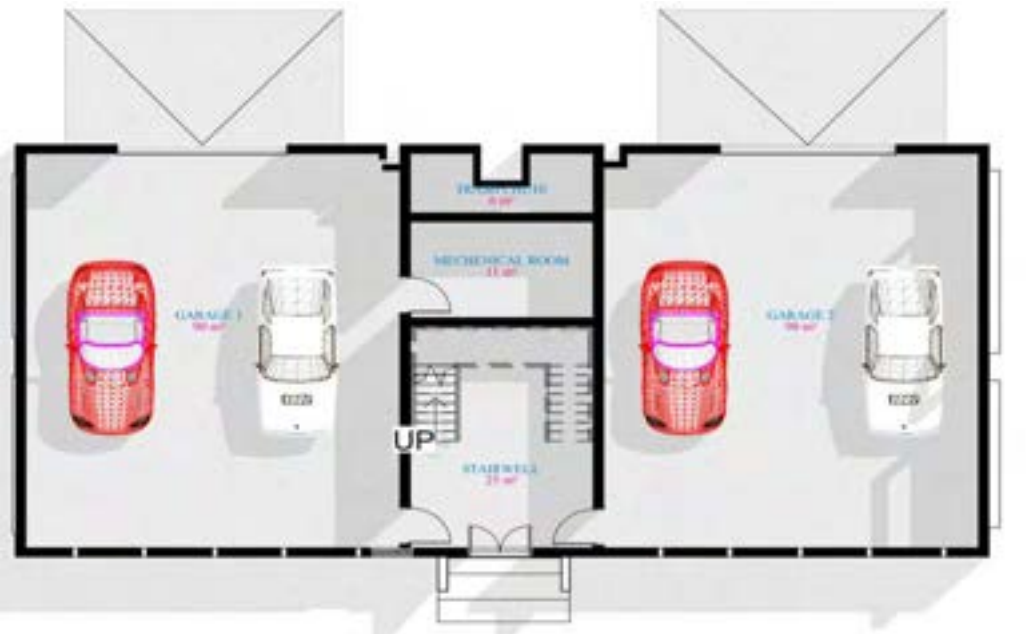
FIRST FLOOR PLAN





STUDIO APARTMENTS

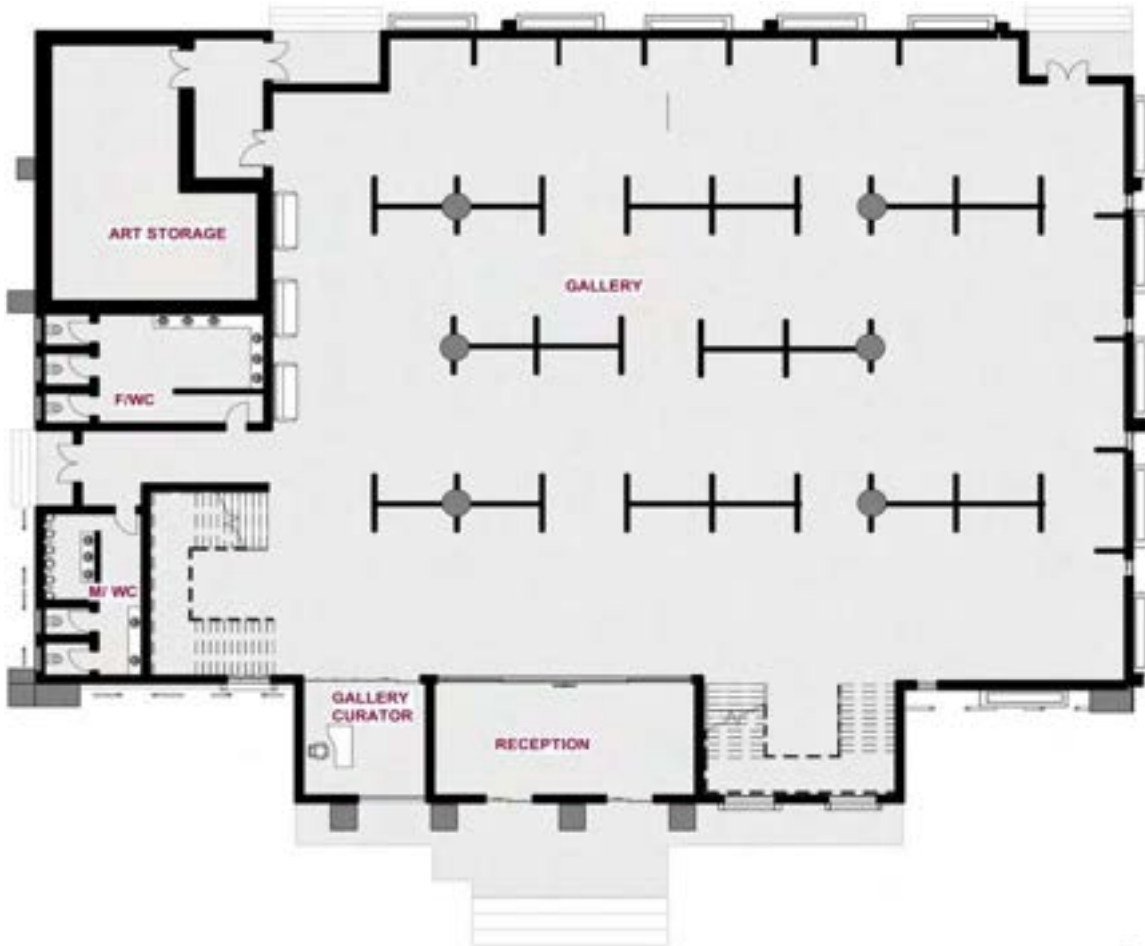
FIRST FLOOR PLAN



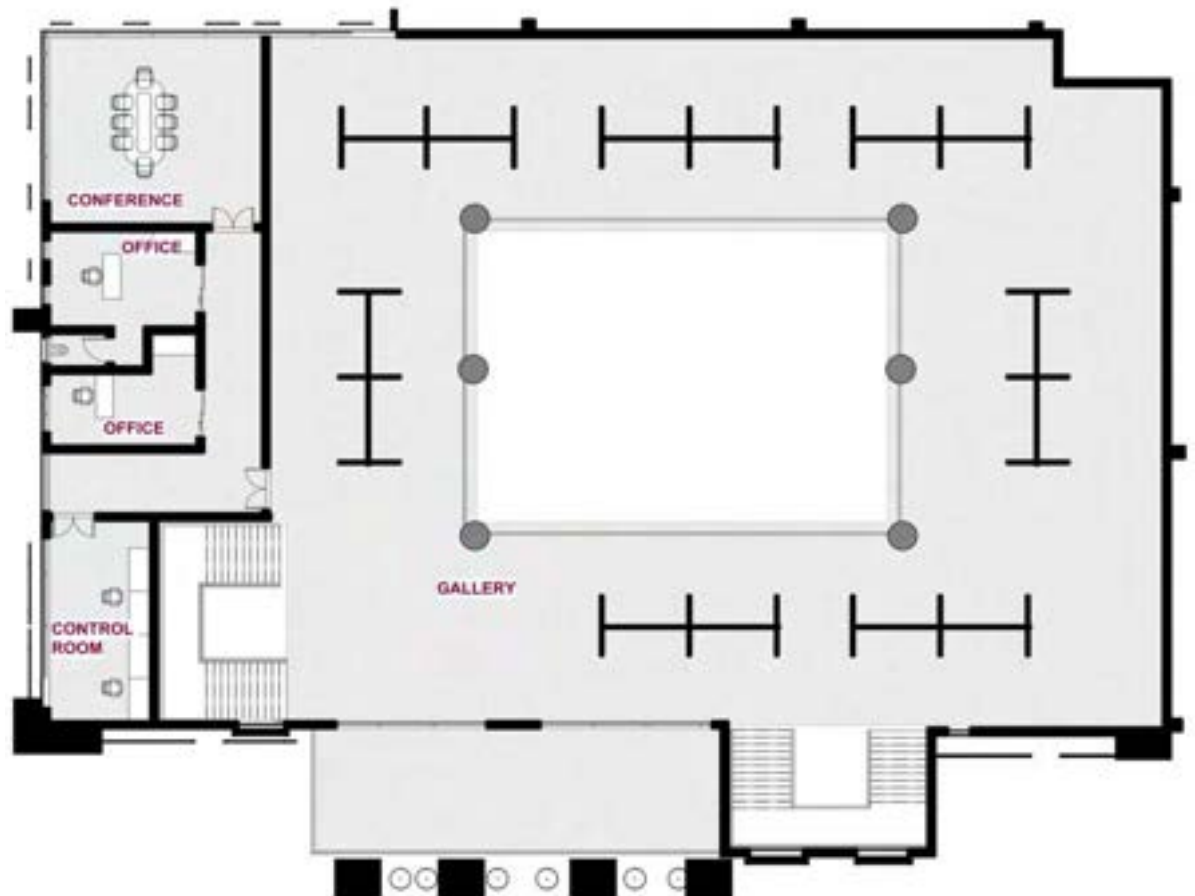
GROUND FLOOR PLAN



ART GALLERY



GROUND FLOOR PLAN

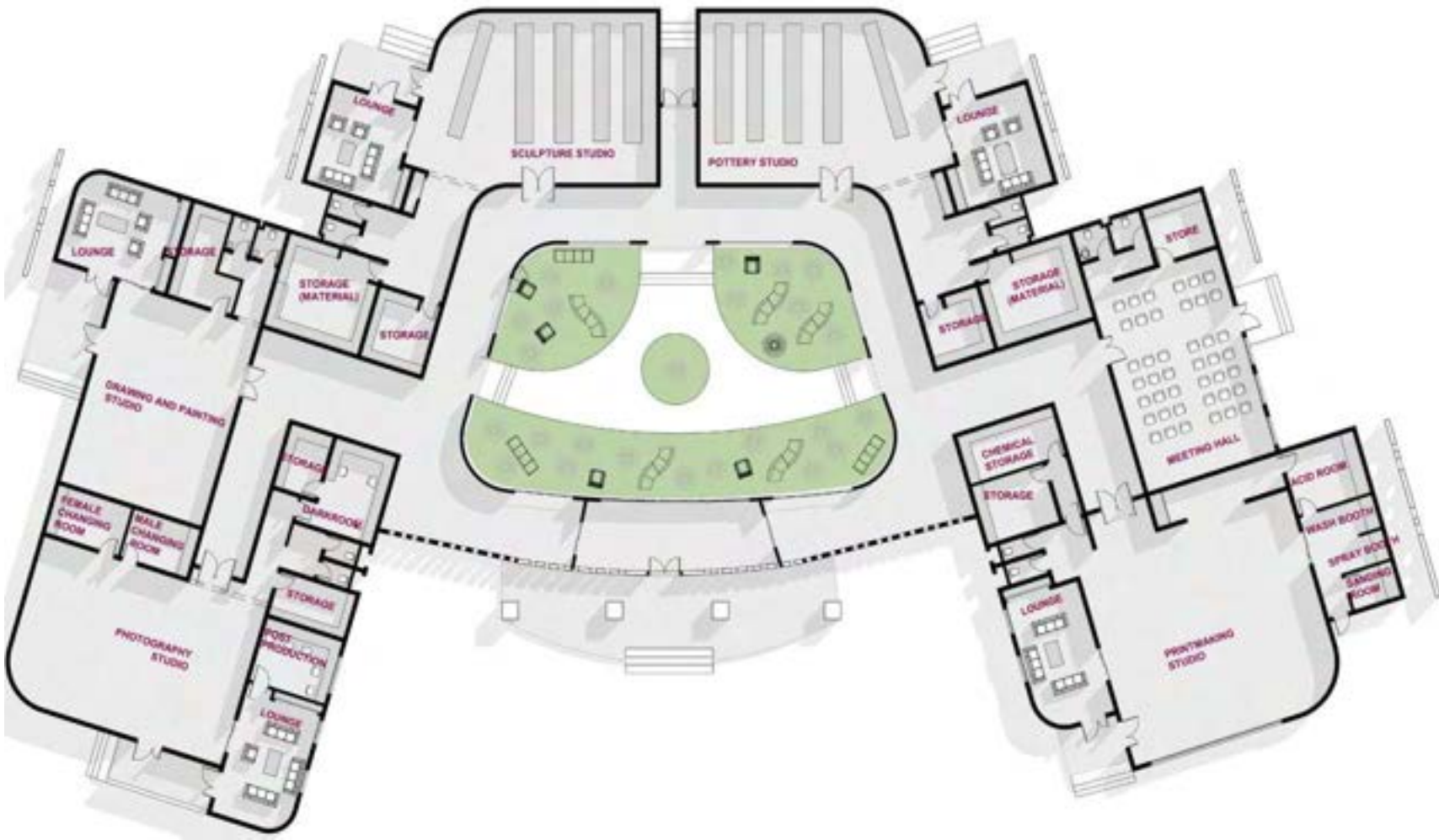


FIRST FLOOR PLAN

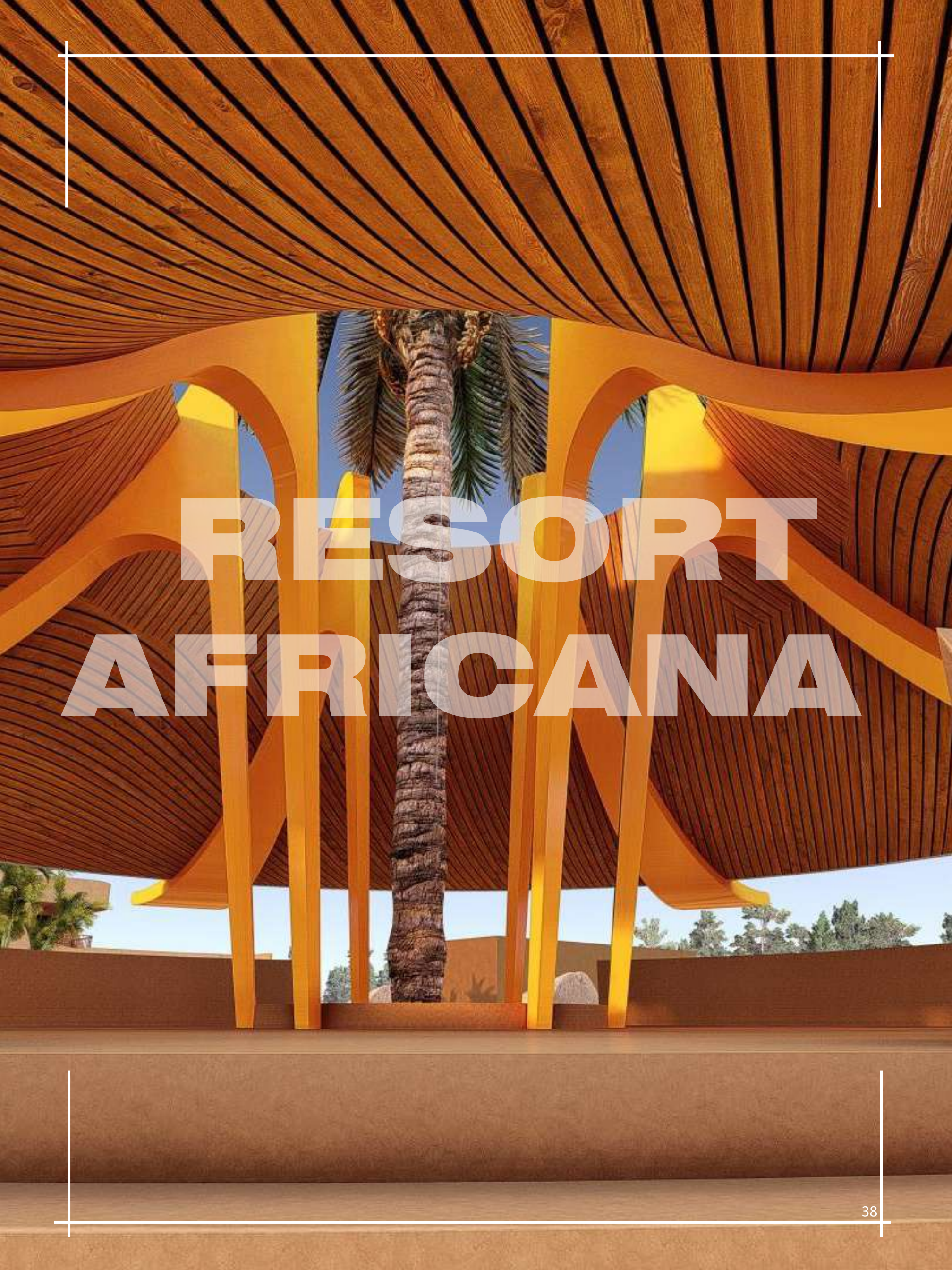




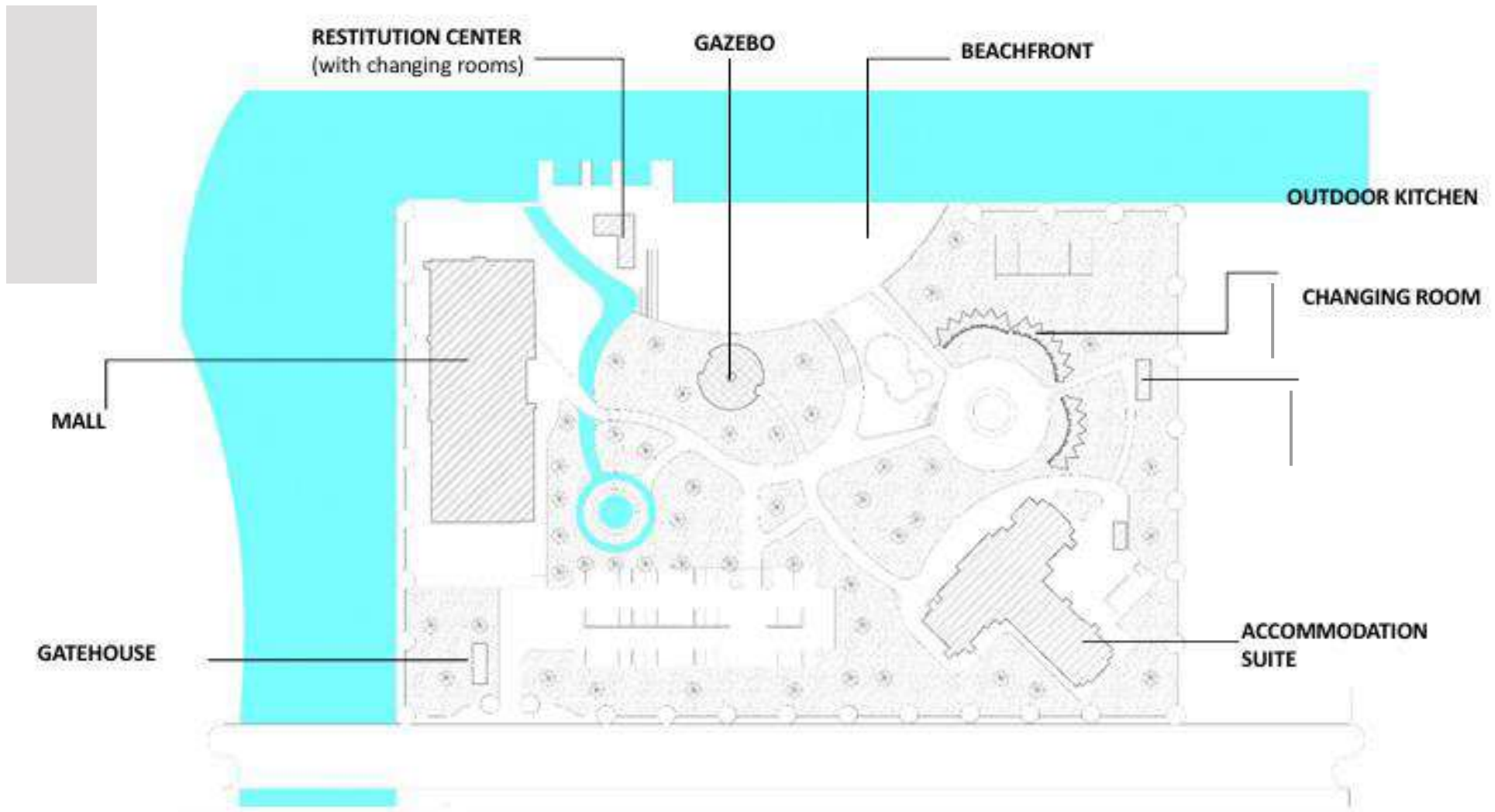
STUDIO







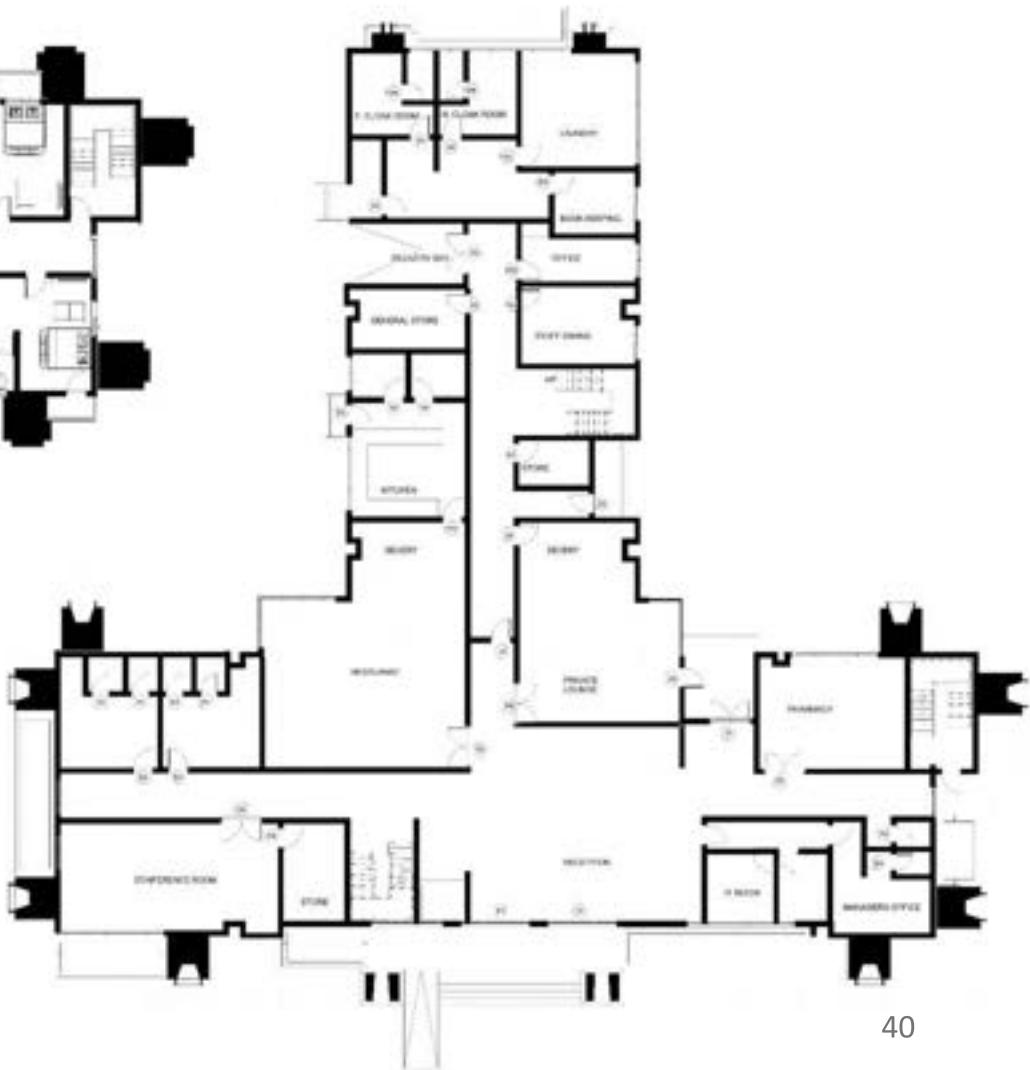
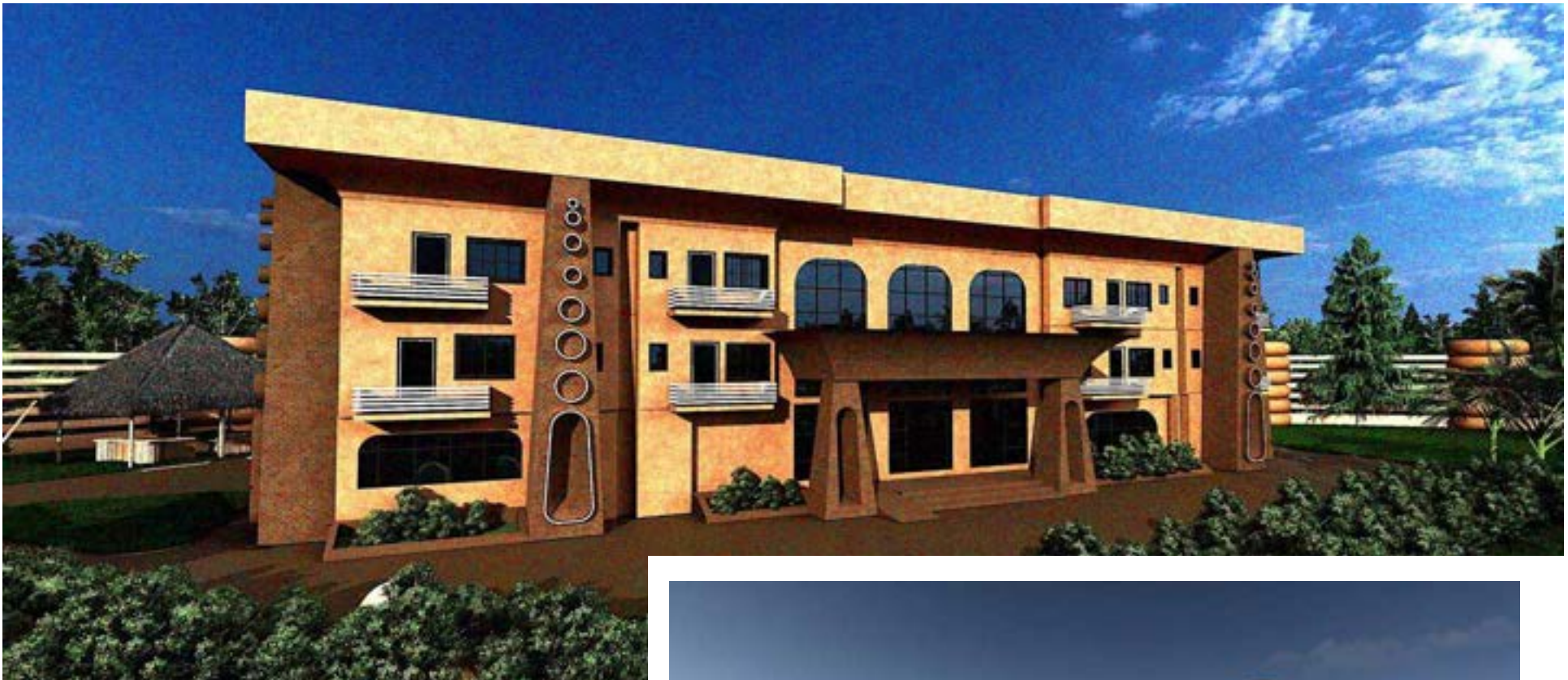
RESORT AFRICANA

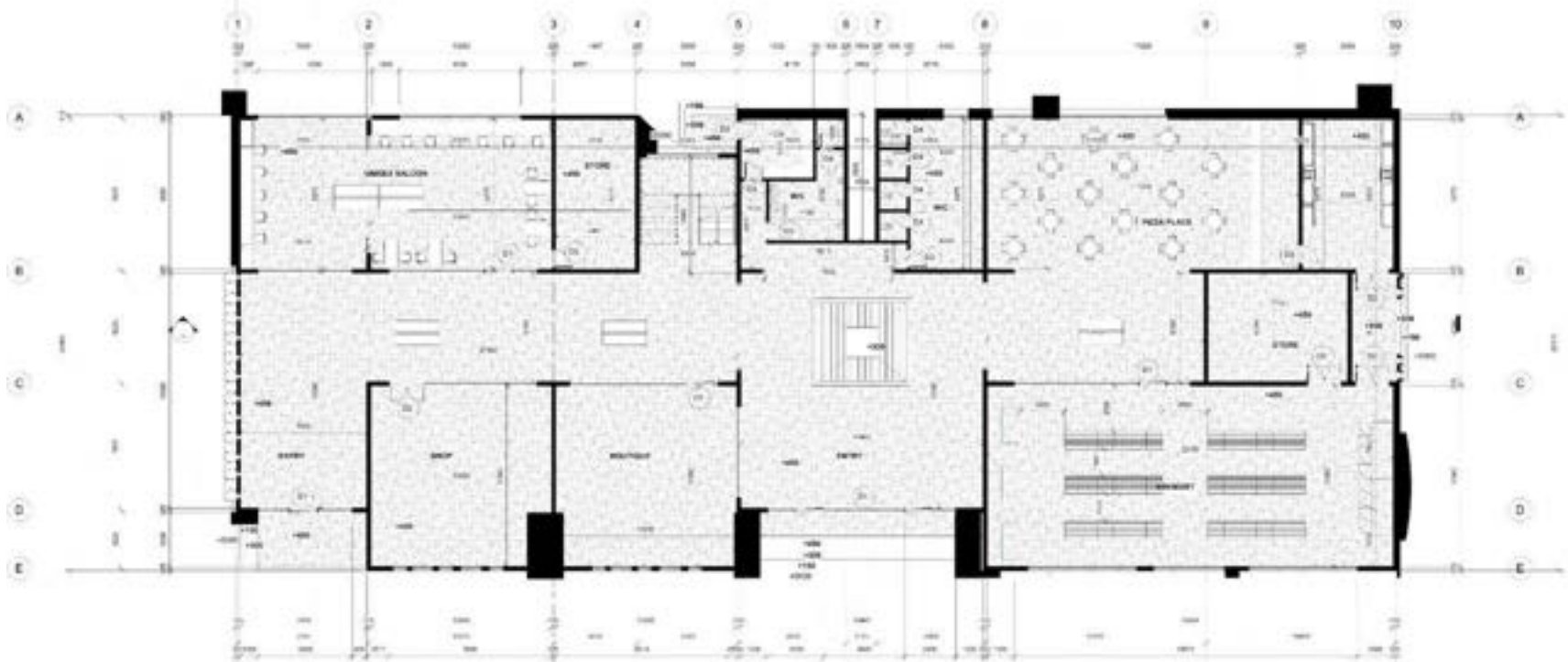
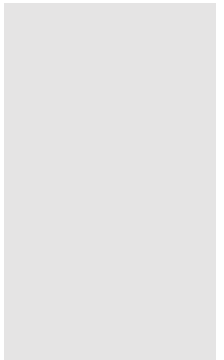
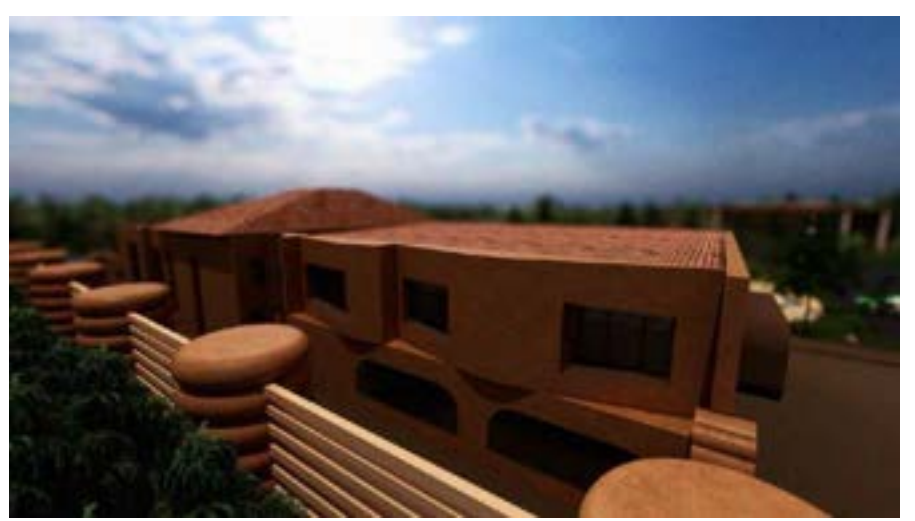


OVERVIEW

A mini-resort that seamlessly integrates elements of African art and architecture, while harnessing advanced versions of locally sourced materials indigenous. It also embraces the cultural values and authenticity of the region, Igbo.

Design Conceptualization: The Igbo culture been our focus, our ideation process began from studying the living space of the Igbos as they live in a cluster form of housing , with the obi ,obi ukwu (sleeping huts) , and kitchen forming the compound. Major architectural advantages of this are circulation and zoning. The proposed design is based on this as we decompactlised our structures, which are the accommodation suite, the mall, outdoor kitchen and gazebo .Haven taken design and planning consideration such as circulation, zoning, privacy and security. The design is zoned into two parts ,which we call the in-house that is the accommodation suite and outhouse which is the mall .The in-house serves primary for the overnight users while the outhouse serve for general use.





OBI



BEACHFRONT



OUTDOOR KITCHEN



