

Mystery of Hope

Dimensions: 9 x 2.5 meters

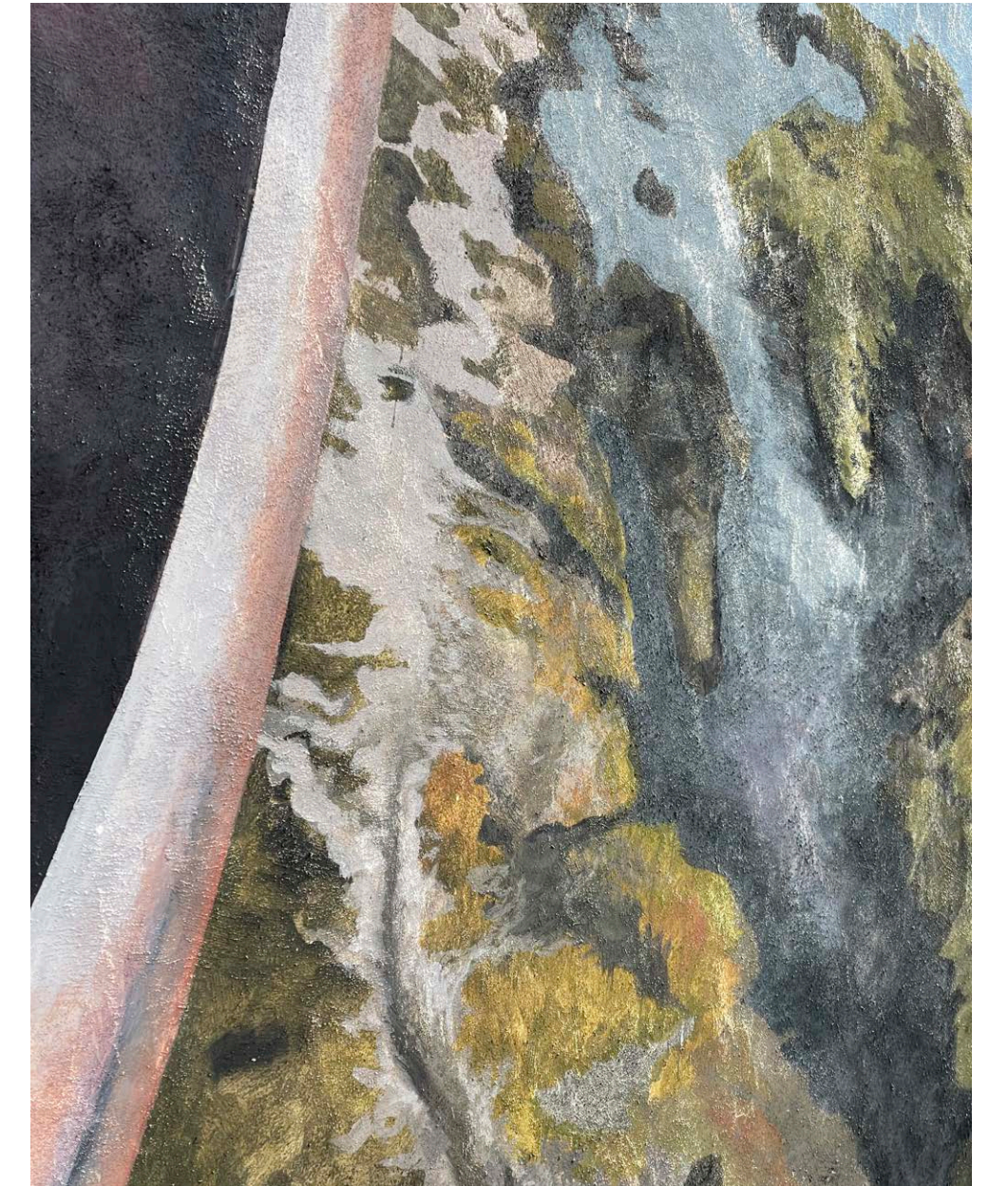
The phoenix, a spiritual figure embedded in both Eastern and Western traditions, fascinates me as a potent symbol of transition, between death and hope, night and day. The surreal mural has been receiving rave reviews from visitors. Author and art critic Anthony Fawcett came to view the mural, saying, "I was transported back to my time in Istanbul; it gave me a strong feeling of it."



51.481480° N, 0.023540° W

Dimensions: 4 x 3 meters

Collaboration with the local community, McMillan Educational Herb Garden, and the everyday textures of the neighbourhood led to a work grounded in place and memory. Yet, it's shadowed by a quiet sense of emotional and spatial detachment that echoes the grit of lived experience.



Constellations Perfume

Ceiling 5 x 2.5 m2, chimney breast 2 x 3 m2

Kitchen mural for a private residence in Leeds, UK, aimed at transforming the ceiling and chimney breast into a vivid and immersive space. It captures the essence of strolling through a mystical forest, where every glance reveals new wonders—lush foliage, blossoming flowers, whimsical mushrooms, and constellations peeking through the interstices of the leaves in the sky.



Invitations

Dimensions: 4.5 x 2.5 meters

A commission from a lovely family in Leicester. The mural is a surprise for their disabled daughter in her bedroom, her sanctuary. I hope to invite her to uncover the traces within the garden scenery and walk her path in the garden.

This concept is born from the evolving garden at my home, tended by my partner Philippe. The rustling and serene quietness of the garden seem to be constantly talking and chirping to the comers, a presence we might only notice in the absence of noise.



A Moment's Rest, 43.4505000° N, 5.8481112° E (2025)

Dimensions: 5 x 2.5 meters

During my residency at Domaine du Deffends, an organic vineyard in the South of France, I deepened my exploration of site-specific art, creating works inspired by the land, its history, and the community's relationship with nature. This experience reinforced my belief in my work to encourage people to 're-see' the landscape and its connections with forming our worldview—an approach I wish to bring to the In-ruins residency 2025.



Translucent Mumbai

10.5 x 6.5 meters space - 9 walls

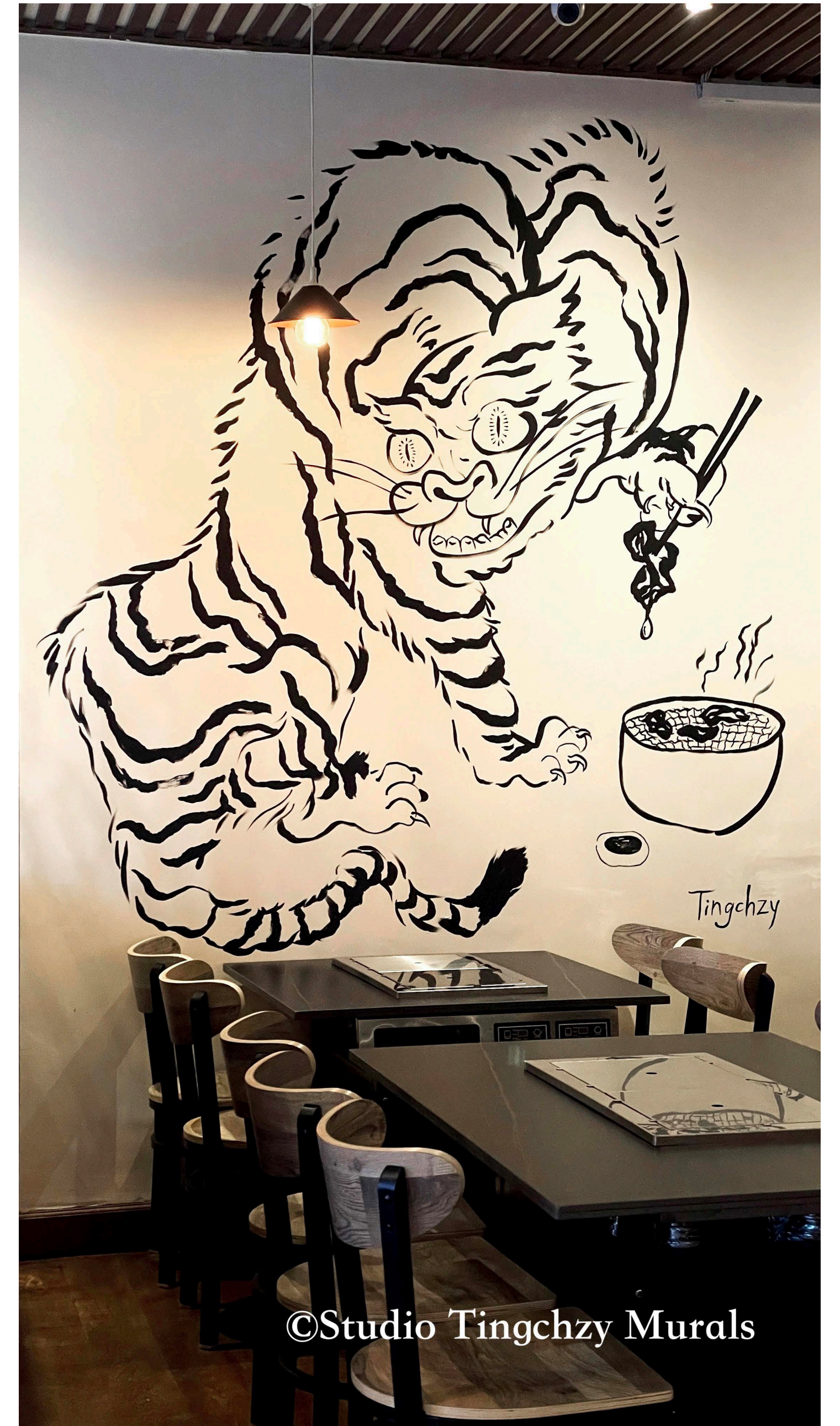
An Immersive Mural Experience at Mumbaikar Vadapav” is a commission for the new Mumbai street food restaurant in Kenton, London. The mural aims to visually explore the vibrant city of Mumbai. The word “translucent” implies transparency, offering glimpses into the city’s layers and complexities. Created within five days, this mural celebrates the city’s culture, heritage, and people, creating a dynamic ambiance for guests.



Folklore

4 x 3 meters

It took much longer to work on this one! Painting on a large wall feels completely different from painting on paper at a table. Honestly, it felt like I was boxing with this painting. Mural painting with Seoul sarang. Inspired by ink painting traditions shared across Taiwan, Korea, Japan, and China.



©Studio Tingchzy Murals

Tingchzy Studio Tingchzy Murals

Gamer StArt

Two corridors
10 x 7 x 2 meters

For my 90's kids, "Gamer StArt", created for Xbox Rare Studio Ltd., celebrating Rare's 40th anniversary!

Inspired by Rare's legacy, I used raw, simple strokes to capture both the digital quality and the characters' energy, as well as the magnificent setting of Rare's studio.

