

PORTFOLIO
Justin M. Kemmerer

B.S. Arch. '24
M. Arch. '25

Temple University | Tyler School of Art and Architecture



Law School Addition

Beasley Law school | Temple University
Location: Philadelphia, PA

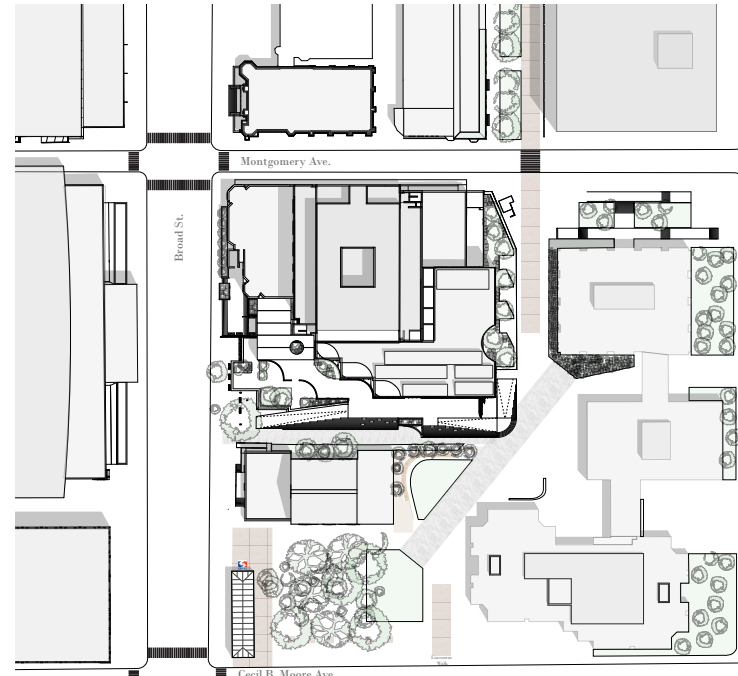
Arch. 8012 Elective Design Studio
Professor Clifton Fordham | Jeremy Avellino
Summer '25

The focus of this studio was to present the university facilities group and law school leadership with a viable edition that could accommodate their growing enrollment.

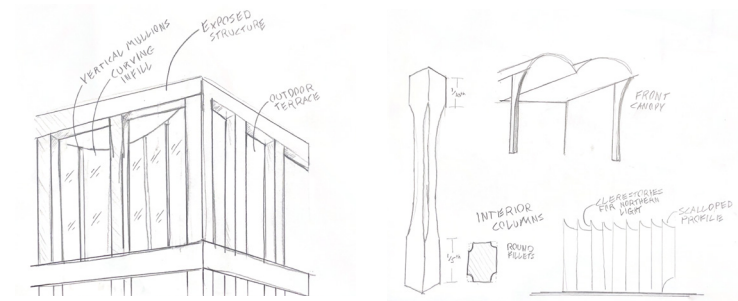
I began by addressing accessibility issues, as the current entrance has none. I also shifted the main entrance to the southern elevation, giving it better access to the student thoroughfare of Liacouras Walk and SEPTA rail.

The parti diagram of the building is that of a new, evolving idea of the study of law, shown as a structure that is unwrapping from the existing building. The structure is mass timber, wrapped in a terracotta rain screen that presents as an unfolding tapestry.

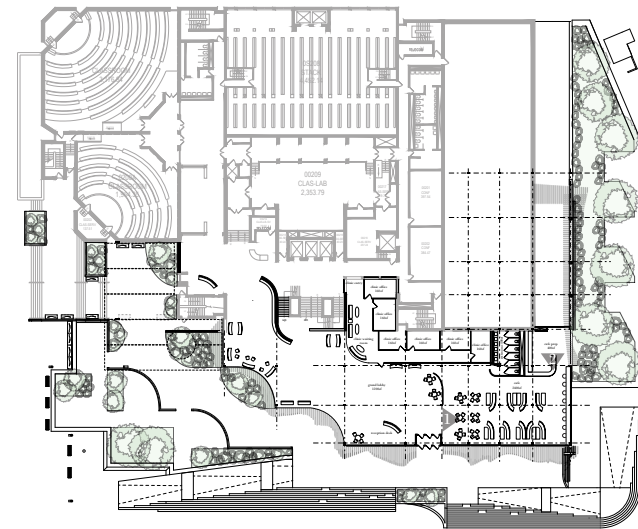
The new program includes group study spaces, moot courts, classrooms, an auditorium, a reception hall, a cafe, and wellness rooms.



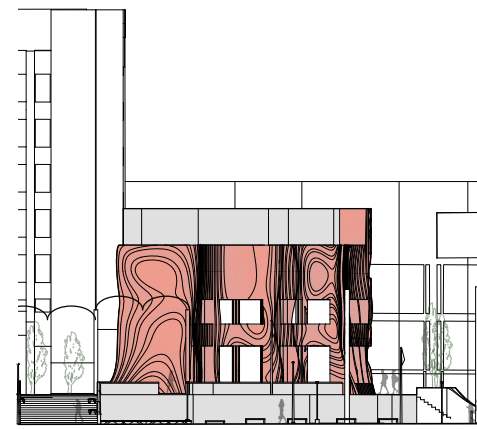
Project Site Map: Temple University - Philadelphia, PA



Selection of concept sketches



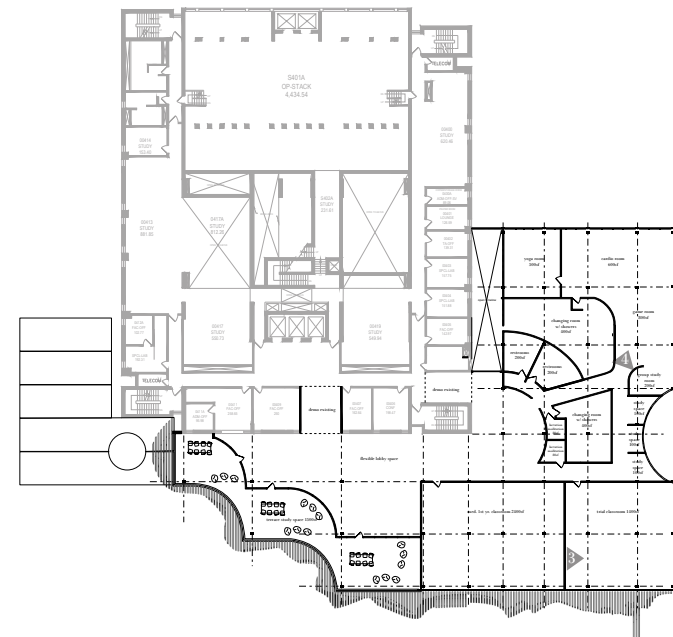
First level plan



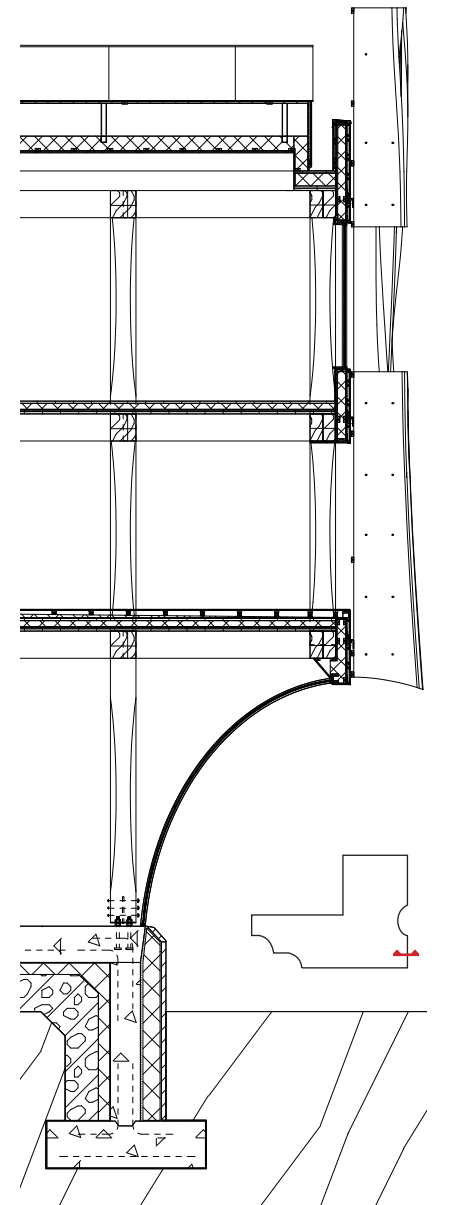
West elevation



S/E Perspective with accompanying East elevation



Third level floor plan with accompanying views



Southwest Perspective

CANOPY

Education | High School
Location: Philadelphia, PA

Arch. 8013 Comprehensive Design Studio
Professor Mauricio Bertet
Spring '25

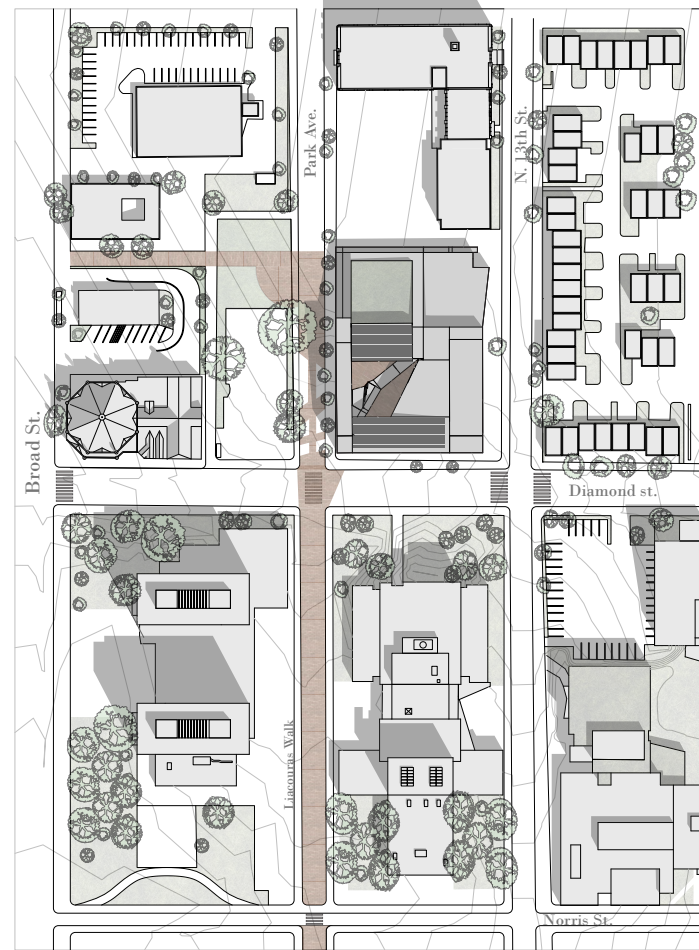
In collaboration with William Webb

Studio Goal

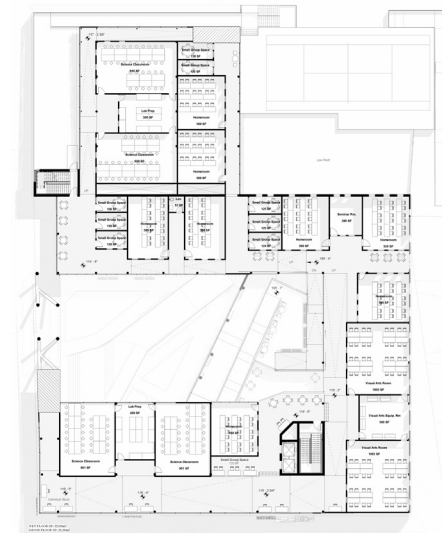
This studio focused on the integration of structural and environmental systems, programming, tectonics and detailing into architectural design, and architectural expression in a holistic and environmentally innovative way.

The prompt for this studio was to design an art and design highschool based in an empty lot adjacent to Temple University, in Philadelphia, PA.

The design was developed with rigorous attention to building codes and regulations, structural design,, accessibility design, energy compliance, plumbing, HVAC, lighting, environmental systems and controls, and egress.



Project Site Map: Philadelphia, PA



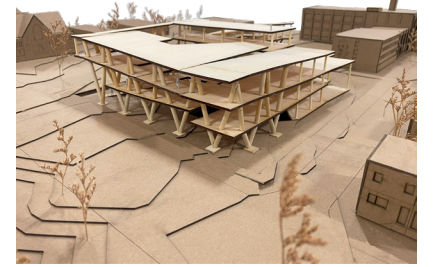
Second Level Plan



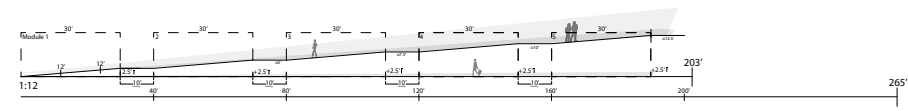
North / South Section



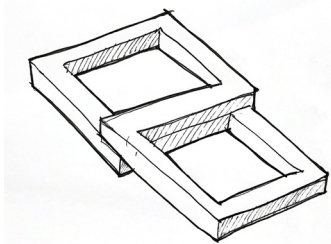
Physical Model 1/2" = 1'
~ 4' tall



Physical Model 1/16" = 1'
Base (including context): 7'x5'

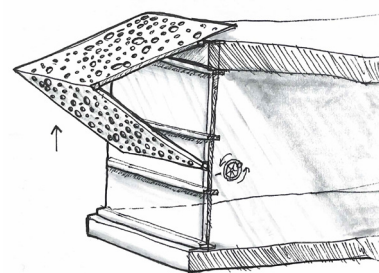


Ramp Rise / Run / Landing Diagram

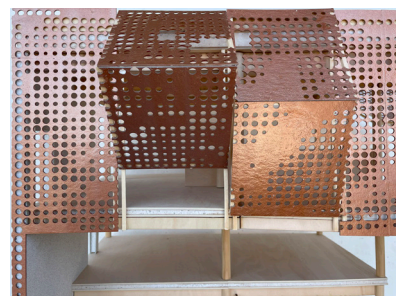


Parti - Infinity Loop Sketch

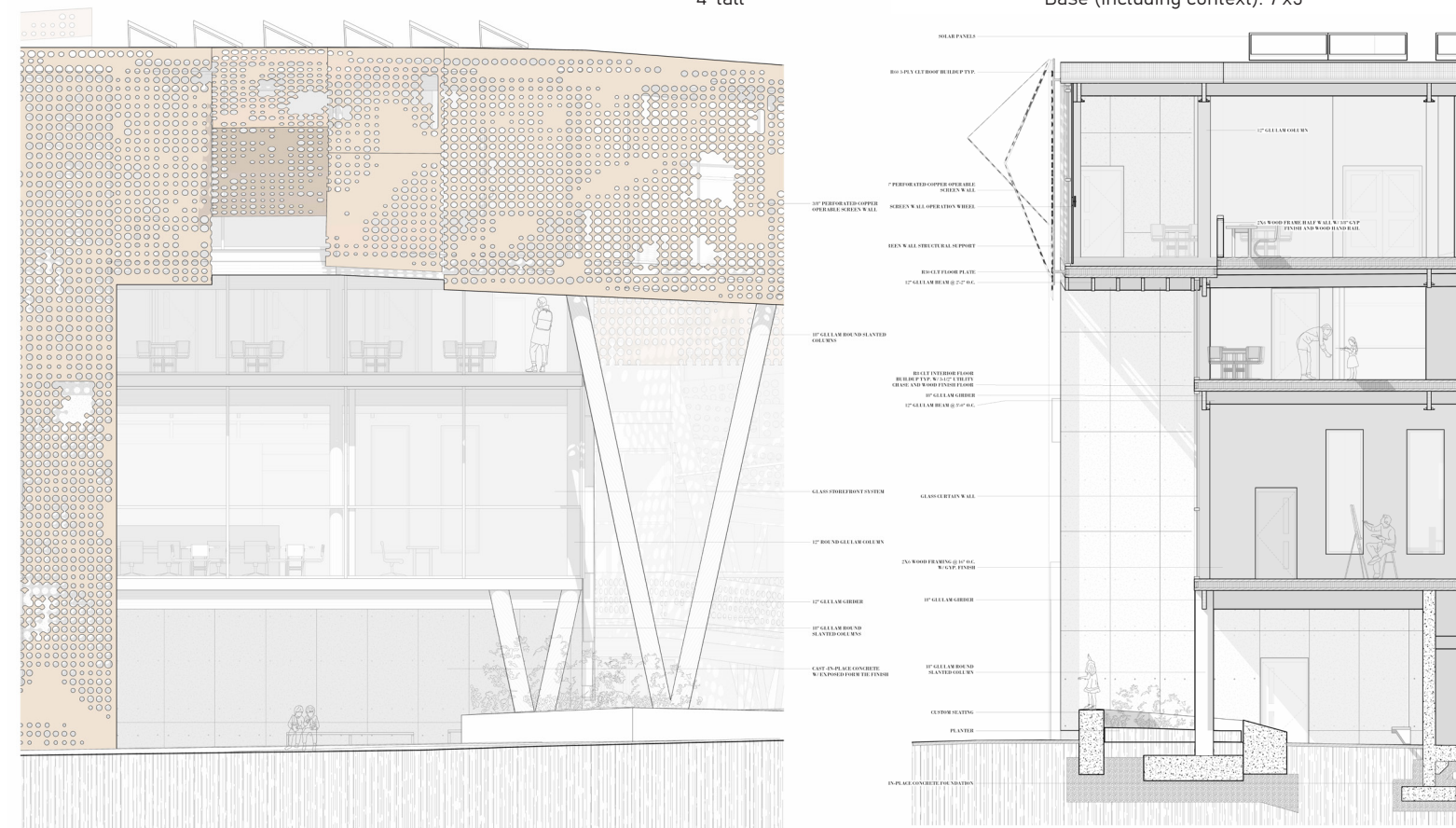
Our initial Parti for this design was fairly simple. A comprehensive ramp system arranged in a figure 8 (or infinity) pattern, that circulates entirely through the space, allowing equal access for all inhabitants while minimizing or entirely eliminating dead-end corridors



Operable screen concept



Operable screen model 1/2" = 1'



Related West Elevation

Related Comprehensive Section

PATCHWORKS

Mixed-Use | Transitional Housing & Health Services
Location: Philadelphia, PA

Arch. 8011 | Professors Na Wei & Ulysses sean Vance
Fall '24

In collaboration with: Britney Sciarillo, Josh Fekete and Jared Lista

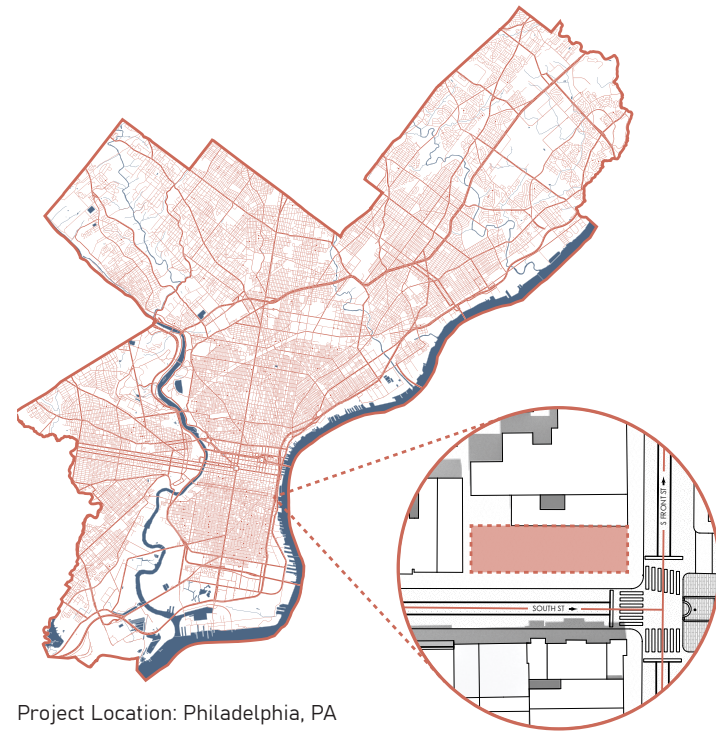
Studio Goal

This studio used "acupuncture" architecture methods to help solve community issues.

Individuals have a 90% drug relapse rate after 1 year, but less than a 10% chance of relapse after 5 years.

This mixed-use project offers community-style living and a commercial floor with access to professional rehabilitation resources.

Our modular system can be built offsite with high(er) precision, save ~40% on construction costs, and keep labor costs to a minimum.

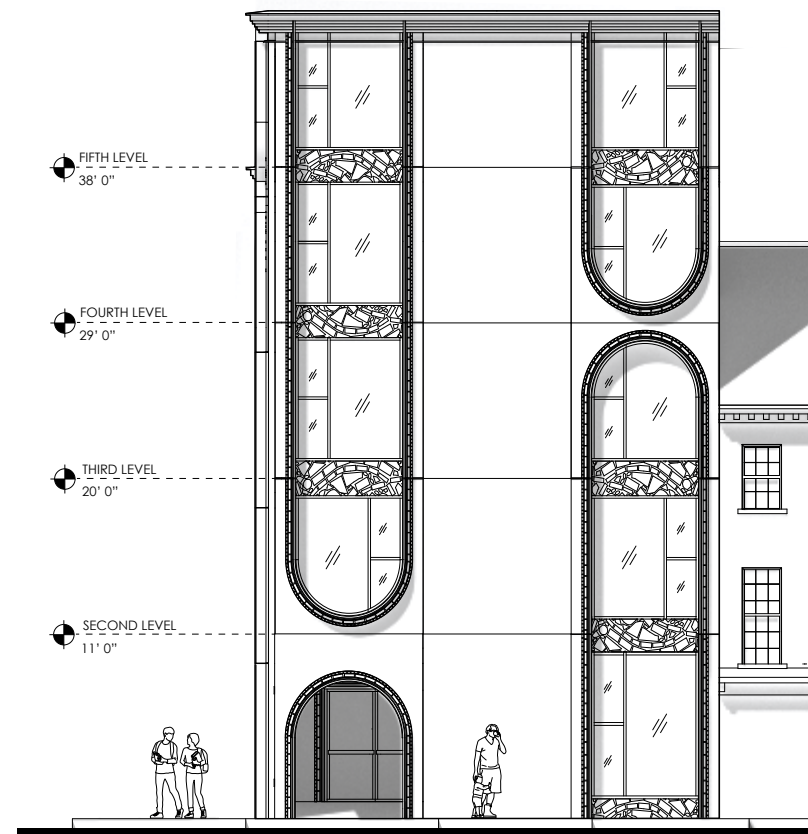
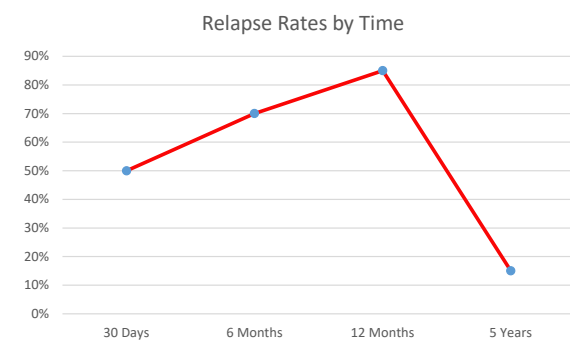


Project Location: Philadelphia, PA



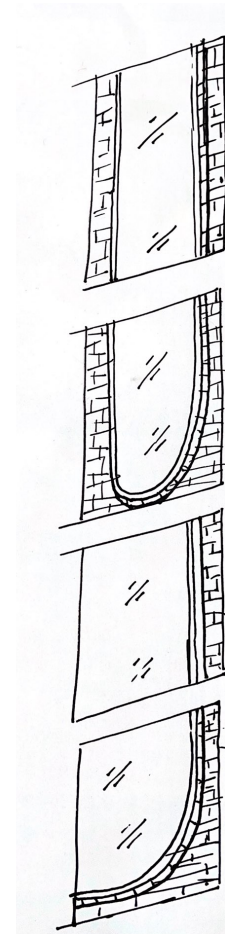
Research

Drug use by country

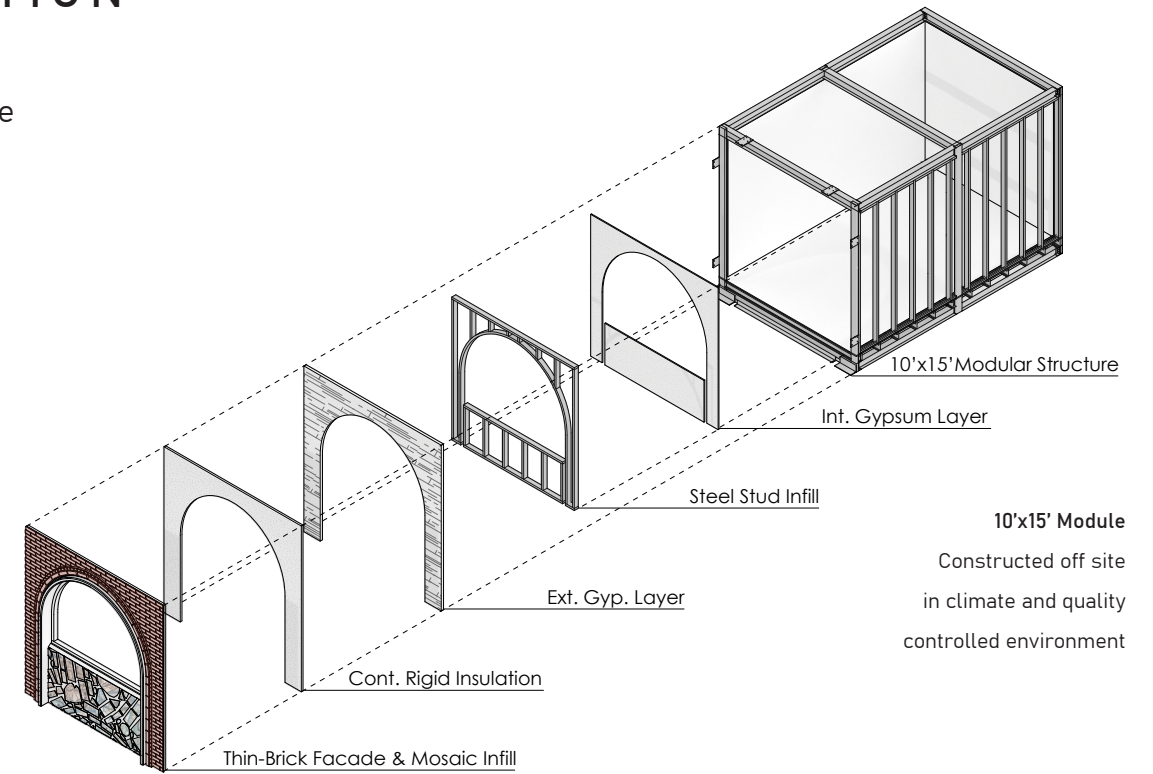


CONSTRUCTION STRATEGY

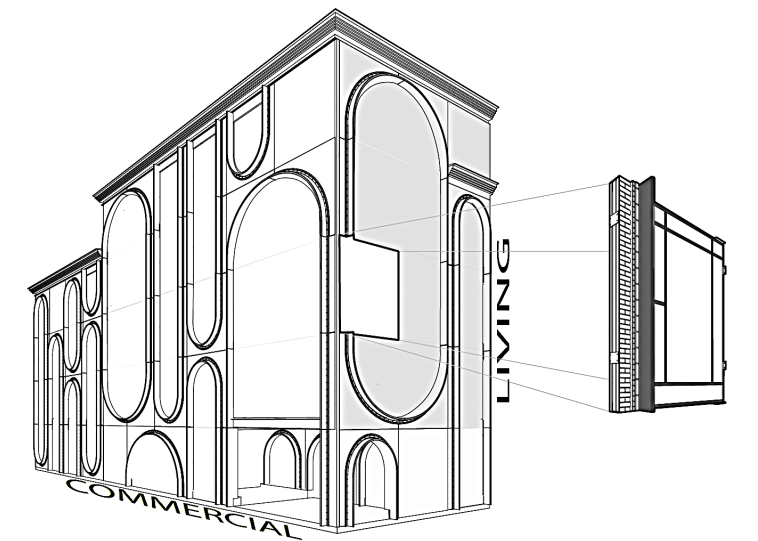
Facade & Module



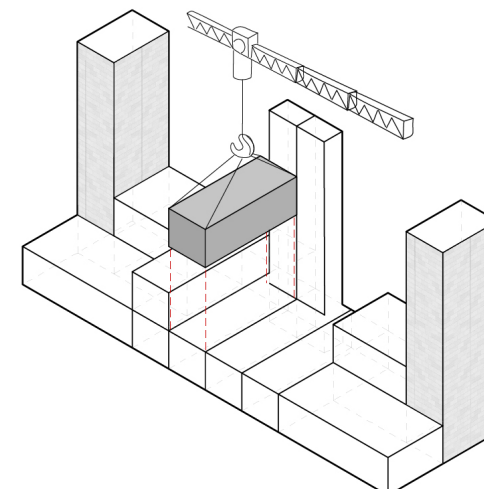
Facade Concept
4 styles, arranged to suit program and aesthetic



10'x15' Module
Constructed off site in climate and quality controlled environment



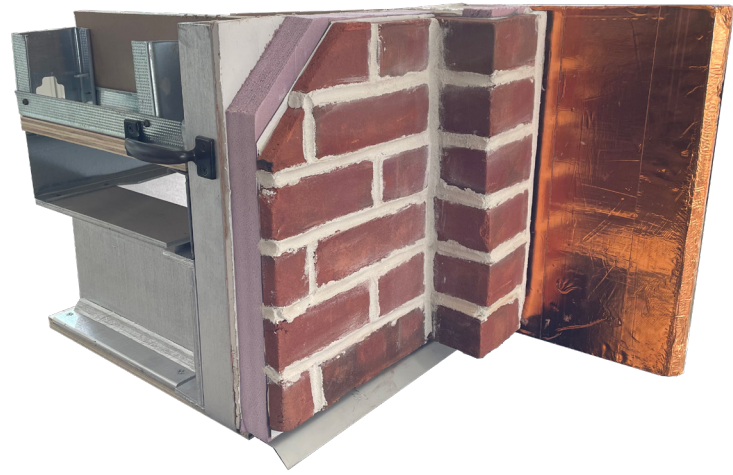
Facade Application
4 styles, arranged to suit program and aesthetic



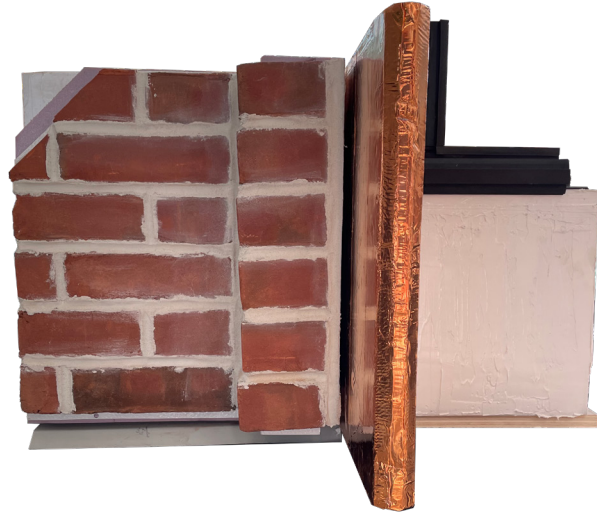
Module Assembly
Egress and Elevator Cores built on site
10'x15' Modules get craned into place

EXPLORATION

Model Making and Visuals



Full Scale Physical Model
Material and assembly exploration using construction materials true to design



Physical Model

South St. Elevation

1/2" = 1'



Elevation

4 Facade types create variety and respond to built context



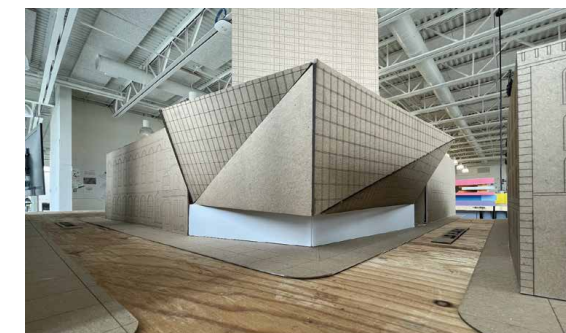
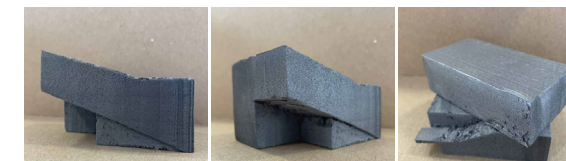
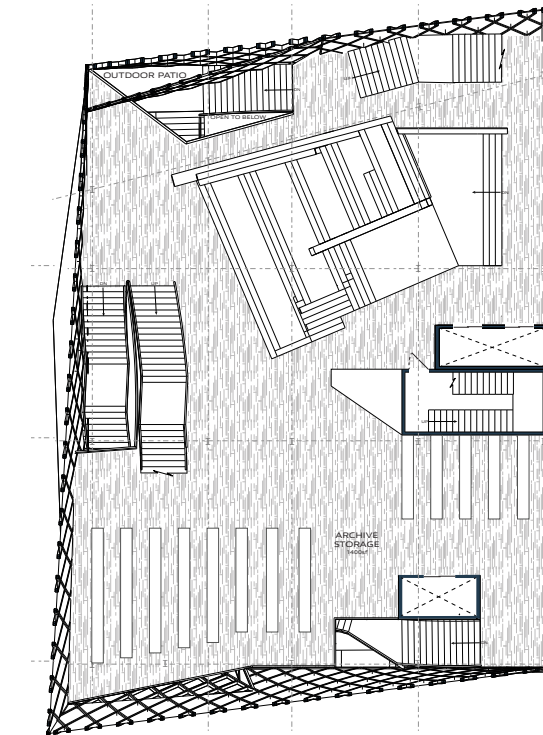
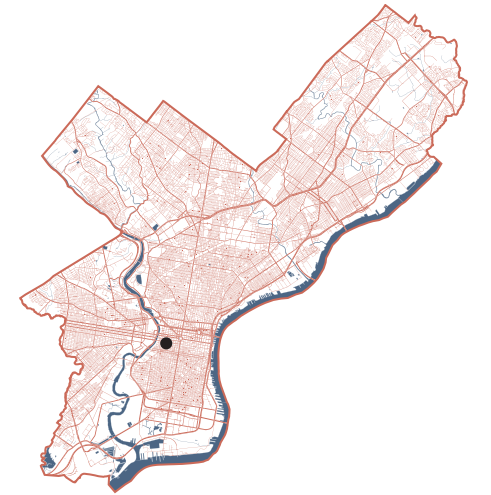
PUBLIC LIBRARY

Municipal Library
Location: Philadelphia, PA

Arch. 3232 | Professor Chris McAdams
Spring '23

Studio Goal

This studio focused on creating a public library in Philadelphia, PA that speaks to the history of the city while bringing an innovative design solution that help turn the space into a focal point for the community



REFERENCES

*Jeremy Riggall, CR | General Manager, Harth Design Build
215-528-3847
Jeremy.Riggall@Harthbuilders.com*

*Chris Lux | Sales Manager | Harth Design Build | Shared Office with
Responds best to emails
Chris.Lux@Harthbuilders.com*

*Robert Edwards PE, CCS, CCCA | President, Edwards & Co. Engineers
215-703-0628
rde@edwardsbec.com*

*Andrew Wit | Professor, Graduate Curricular head | Temple University
215-204-2137
Andrew.Wit@Temple.edu*

*Stephen Campbell, CR | Design Dpt. Manager, Harth Design Build
Direct Supervisor
Responds best to emails
Stephen.Campbell@Harthbuilders.com*

*Randy Grasse | Owner, NRG Mechanical
215-353-8871
nrg.mechanical.llc@gmail.com*

*Jill Voicheck AIA | Architect, Harth Design Build
215-692-4577
Jill.Voicheck@Harthbuilders.com*

THANK YOU



Justin M. Kemmerer

jmkemm89@gmail.com (267) 897-5818