

ARCHITECTURE PORTFOLIO

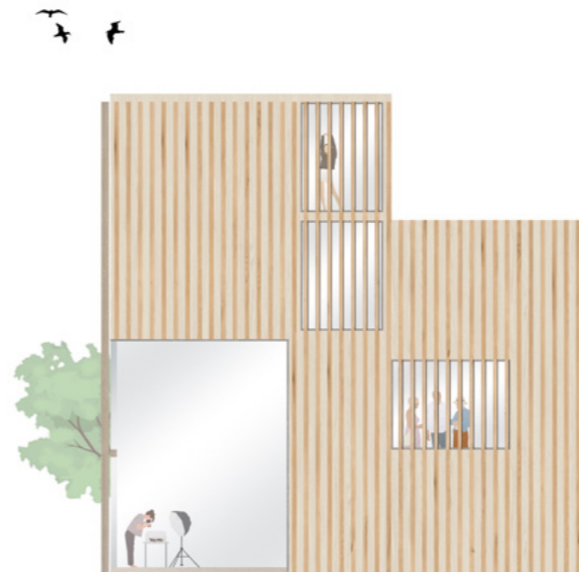
Amber MacLeod

ambermacleod25@gmail.com

+447305725694

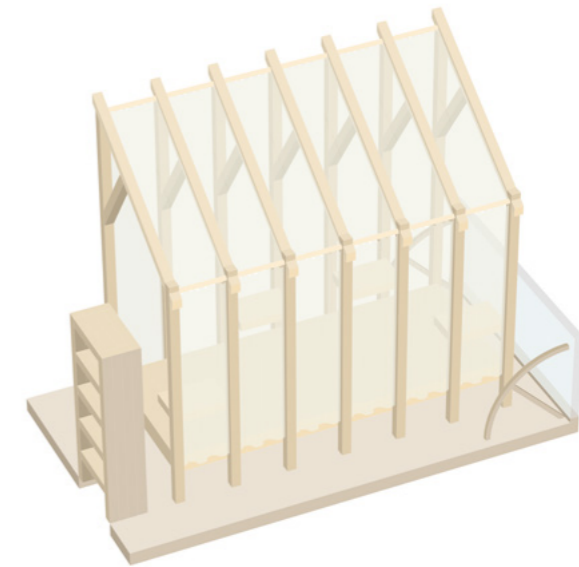


Contents



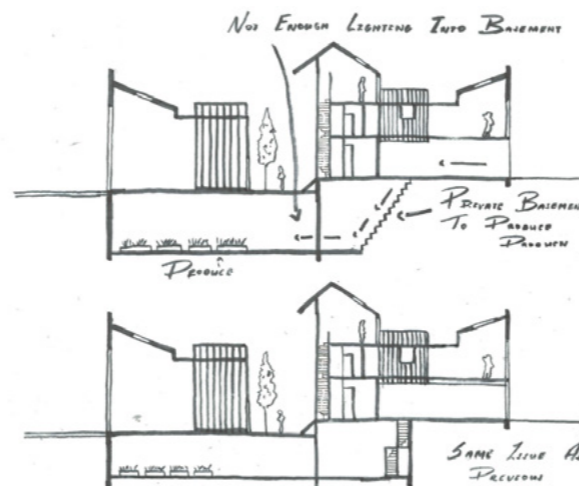
Life-Long Retreat
Fort William

Pg 1-3



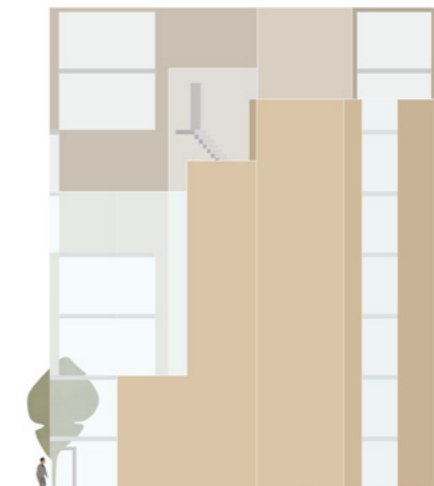
Deforestation Observatory
Lochaber

Pg 4-9



Adaptations
Borneo Sporenburg

Pg 10-13

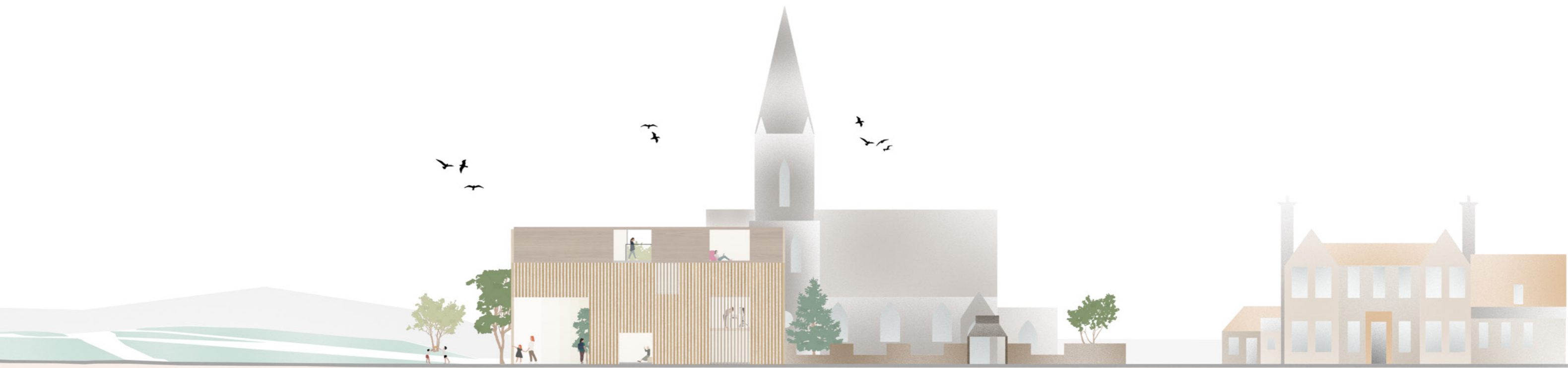


Collective Housing Initiative
Barcelona

Pg 14-17

Life Long Retreat, Fort William

I explored how tourism-focused architecture can support Fort William's local economy through context-sensitive design. A Scottish stone workshop can promote craft, community interaction, and local employment. The design prioritised accessibility, shared spaces, and local materials to foster both social and economic resilience.



Life Long Retreat, Fort William

Conceptual Design



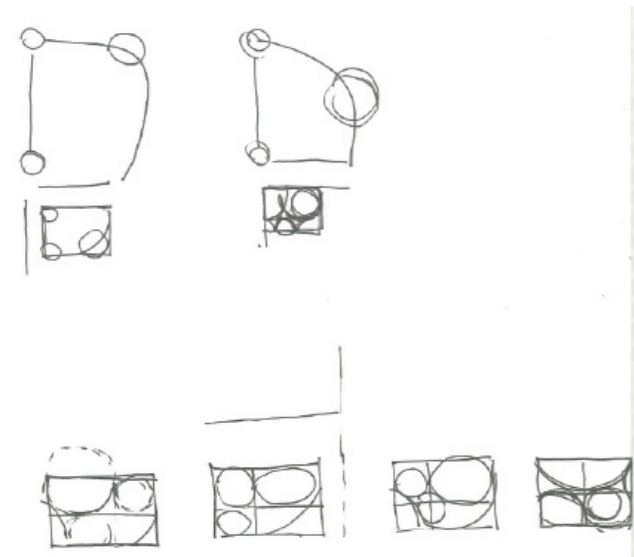
Iteration 1



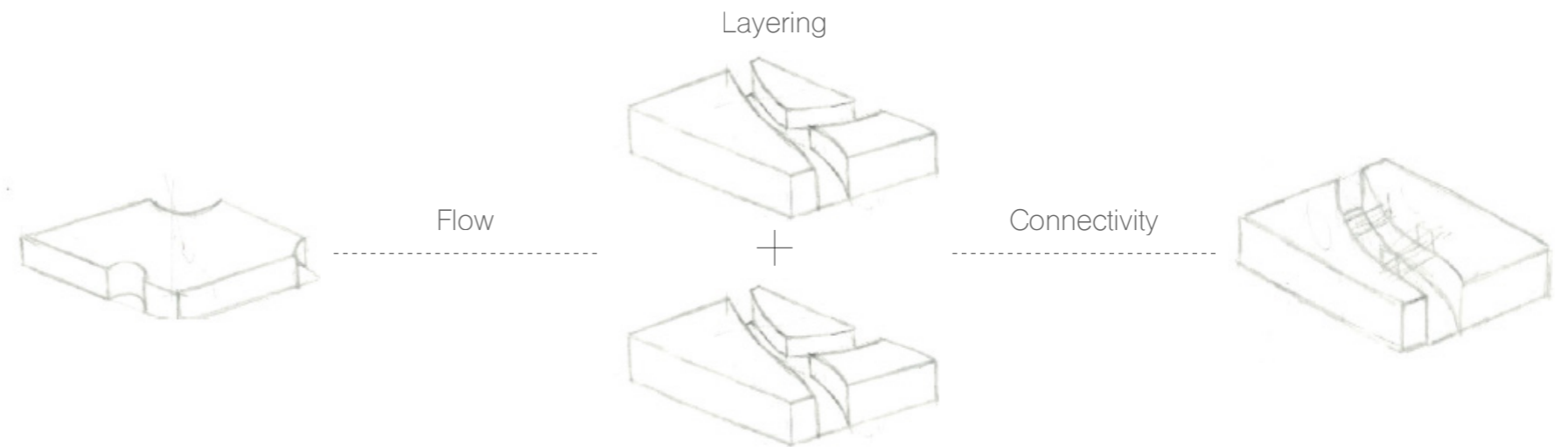
Iteration 2



Iteration 3



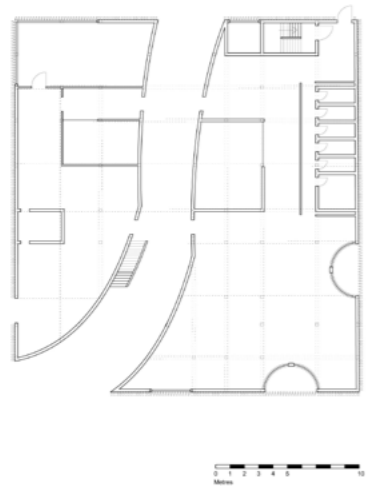
Form and Massing



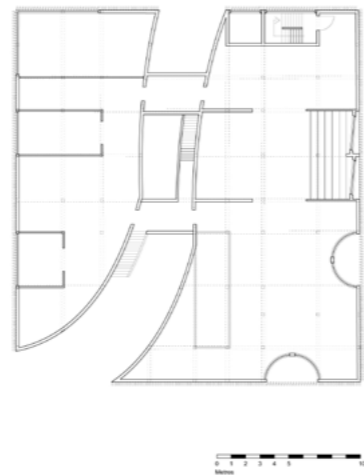
Life Long Retreat, Fort William

Development

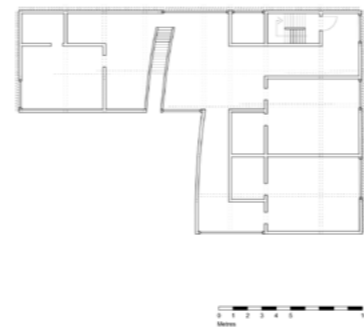
Level 0



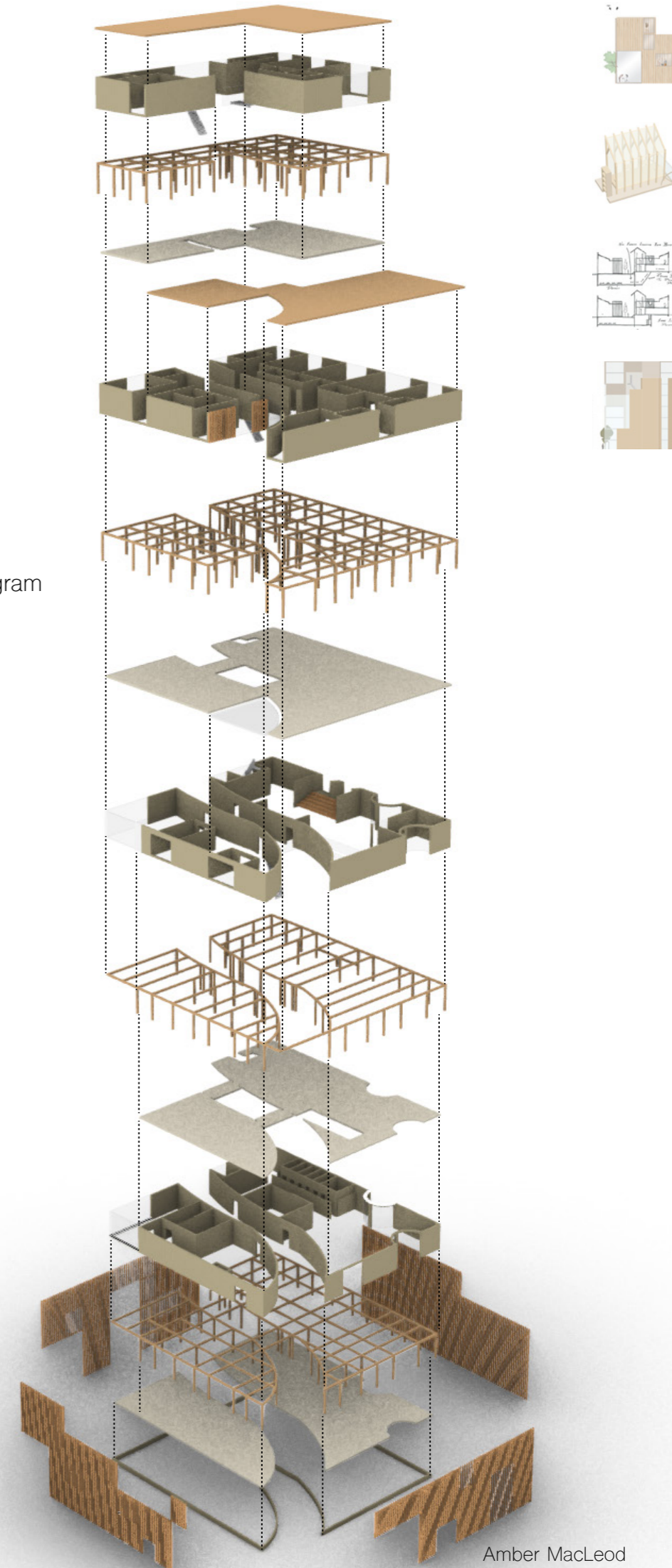
Level 1



Level 2



Exploded Diagram



Detail Section



Deforestation Observatory, Lochaber

The observatory is designed as a platform for users to record the environmental and ecological impacts of deforestation on the surrounding landscape. Beyond its functional role, the platform provides a reflective experience, allowing to witness how the land evolves and transforms – fostering a deeper connection to the dynamic changes occurring within the ecosystem.



Deforestation Observatory, Lochaber

Location + Activity



Forestry Scotland Research

Plans and Legacy Felling Approvals

Refers to previously granted felling permissions that may still be valid, but should be reviewed for compliance with current regulations and standards.



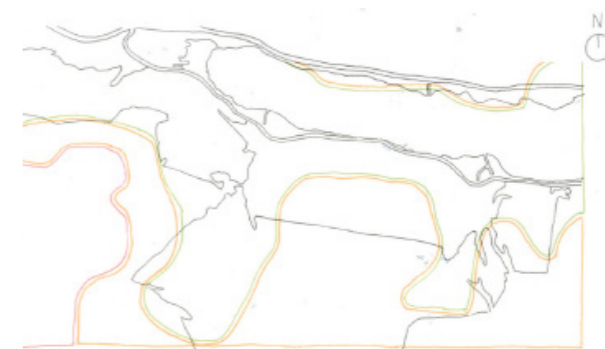
FGS WIG Restructuring Regeneration - Claims

Process of requesting payments for eligible work related to restructuring and regenerating woodlands under the Woodland Improvement Grant (WIG).



Diverse Conifer Scots Pine

Supports the sustainable planting and management of Scots pine alongside other conifer species to enhance woodland biodiversity and resilience to climate change.

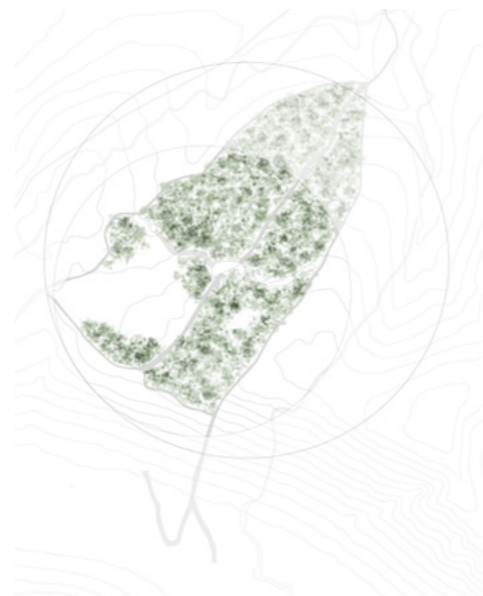


Deforestation Effects



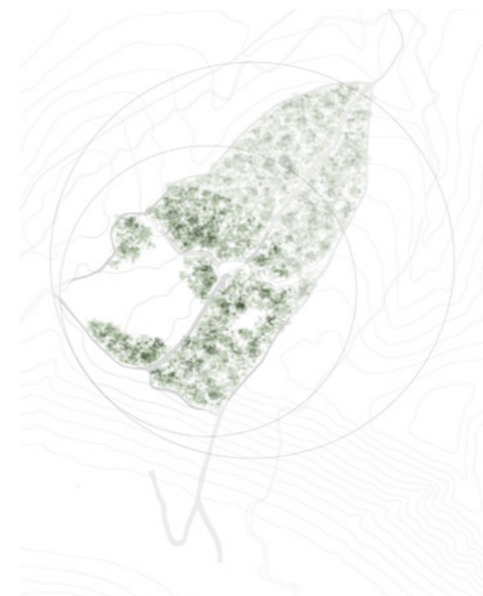
1-3 month

felling



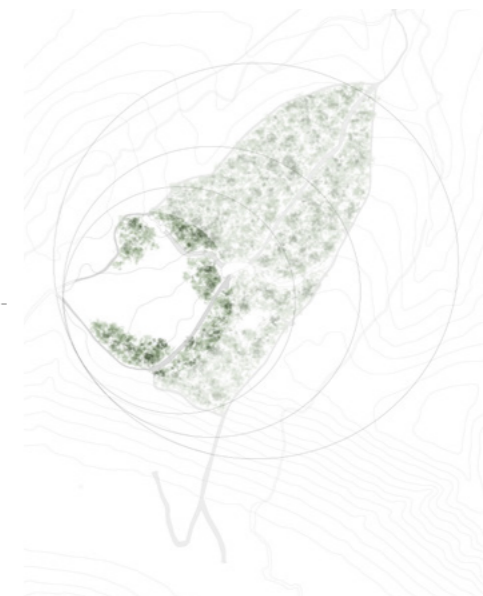
3-6 month

felling



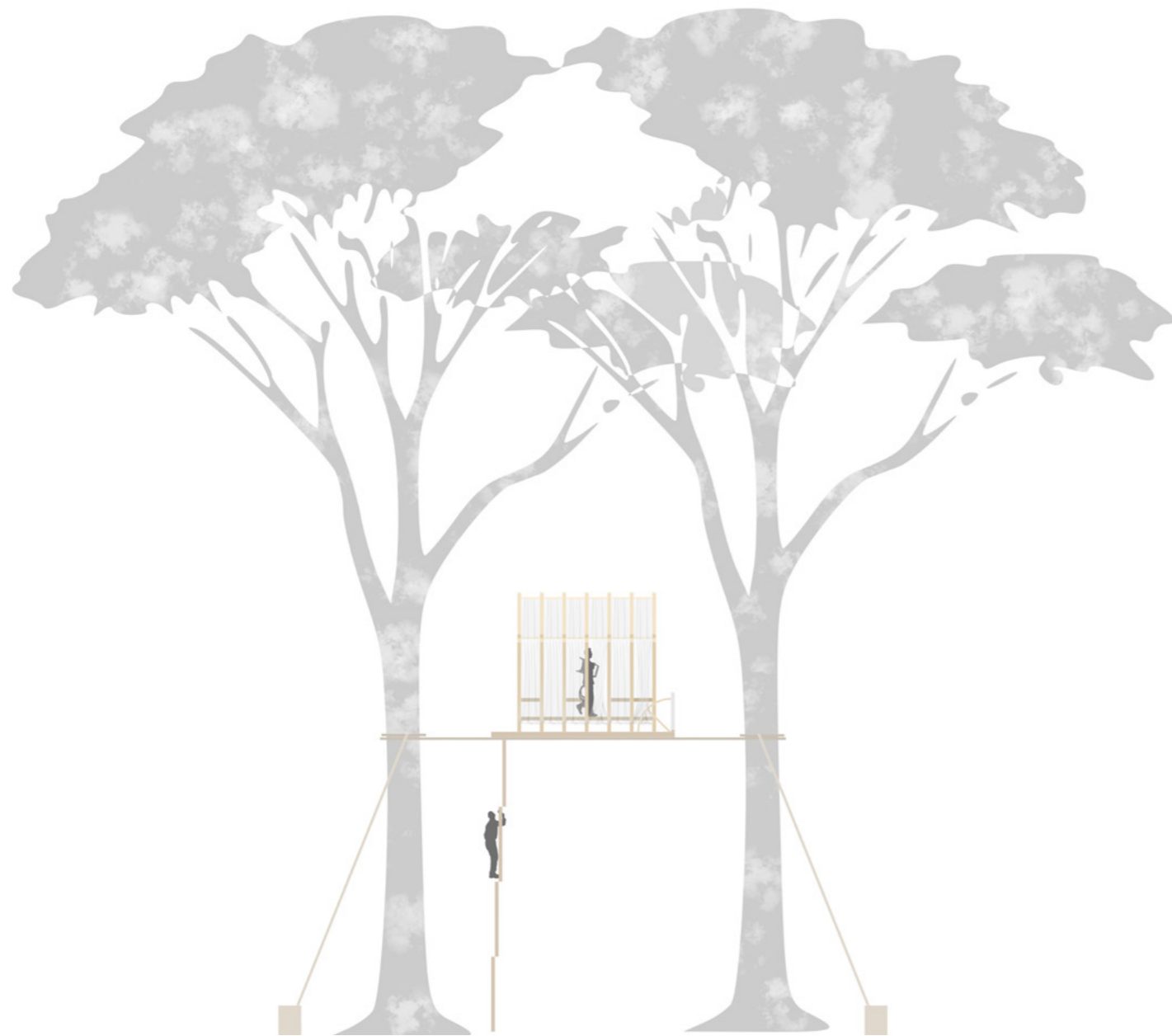
6-9 month

felling

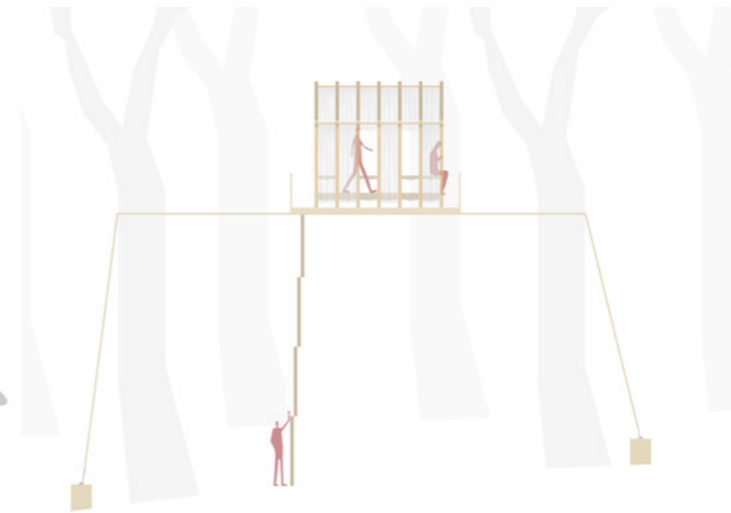


Deforestation Observatory, Lochaber

Proposal



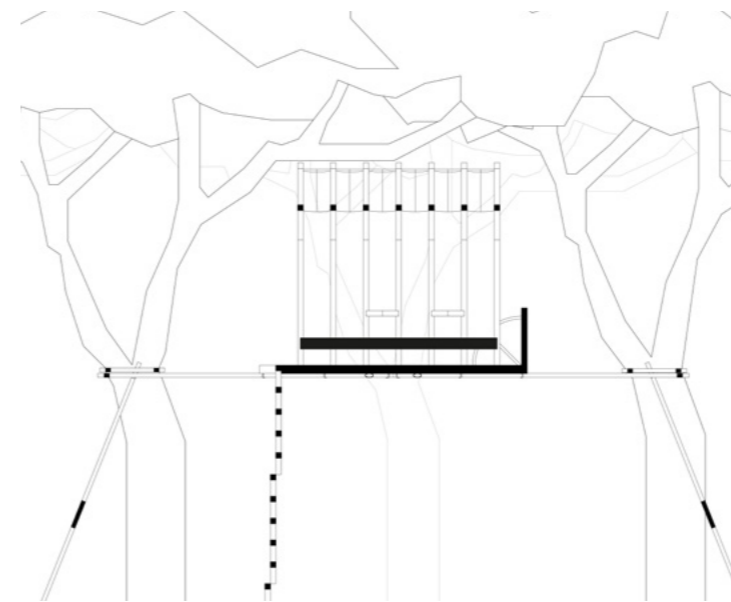
North Elevation



East Elevation



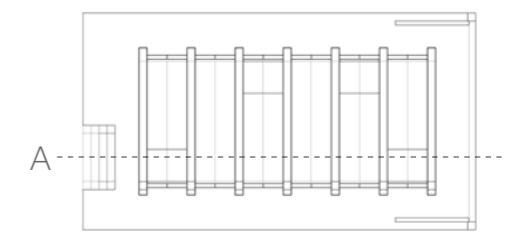
Section A



Base Plan



Floor Plan

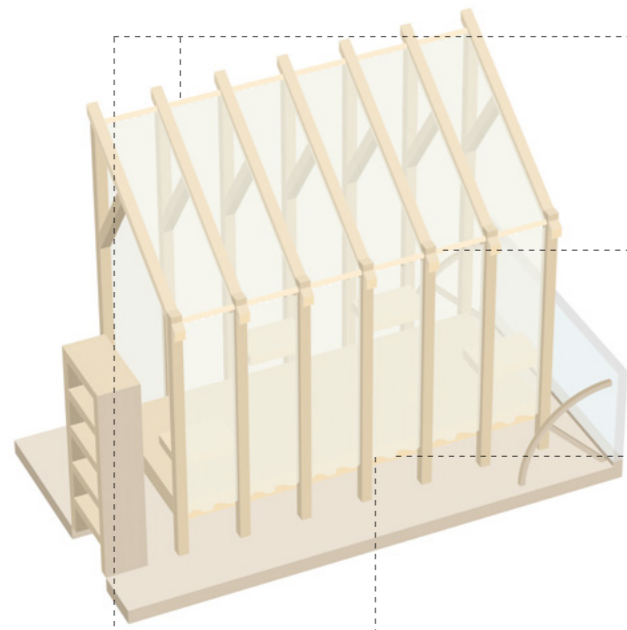


Deforestation Observatory, Lochaber

Adaptability



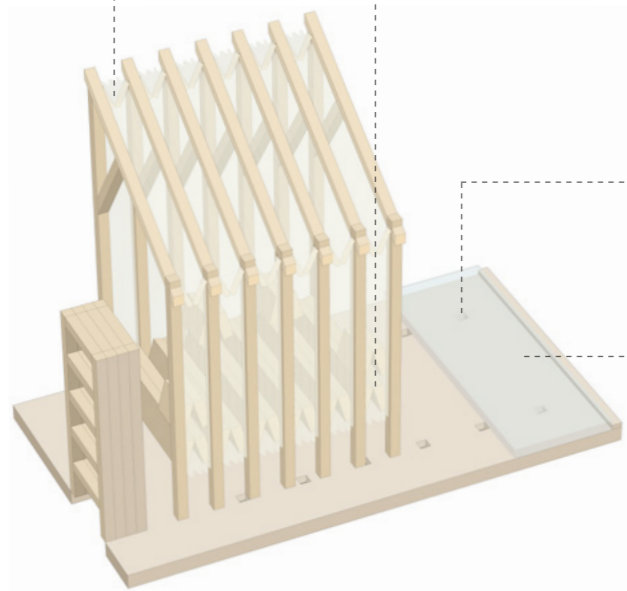
Modular Unit



Collapsible horizontal struts with central hinge, allowing the observatory platform to fold inward

The mesh curtain folds in response to the articulated horizontal members

Hinged floor planks fold in coordination with the articulated system



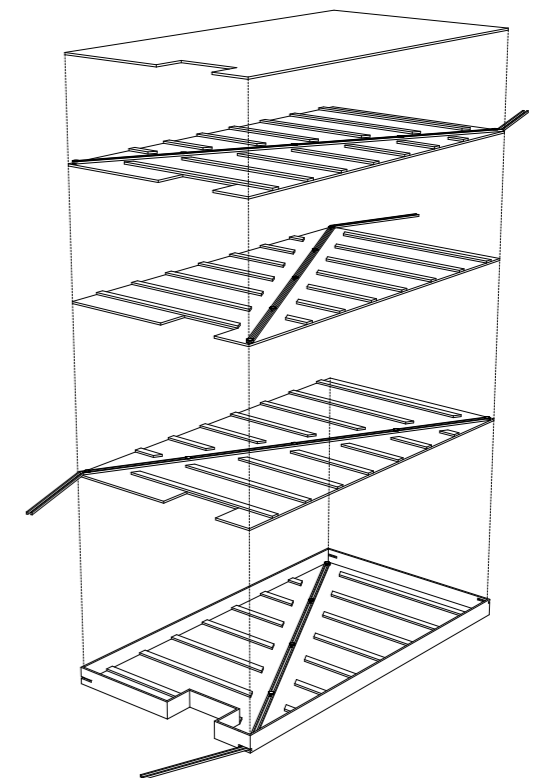
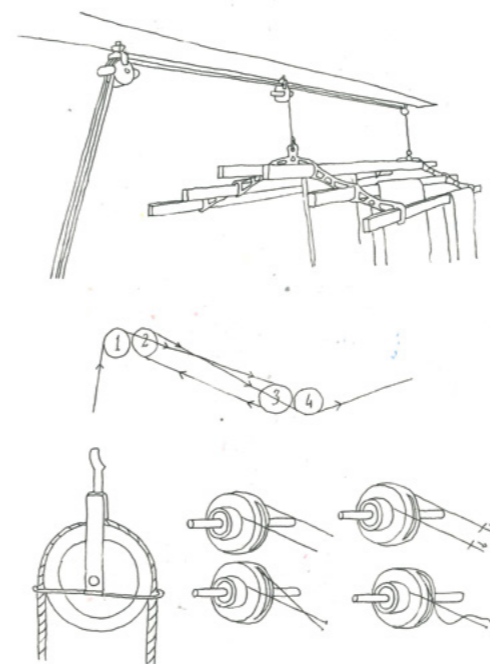
Recessed base slots lock the folded structure in place, ensuring alignment and stability

The articulated balcony, originally designed to fold, was later fixed to improve safety at height

On-Site Assembly



Pulley System Floor Breakdown

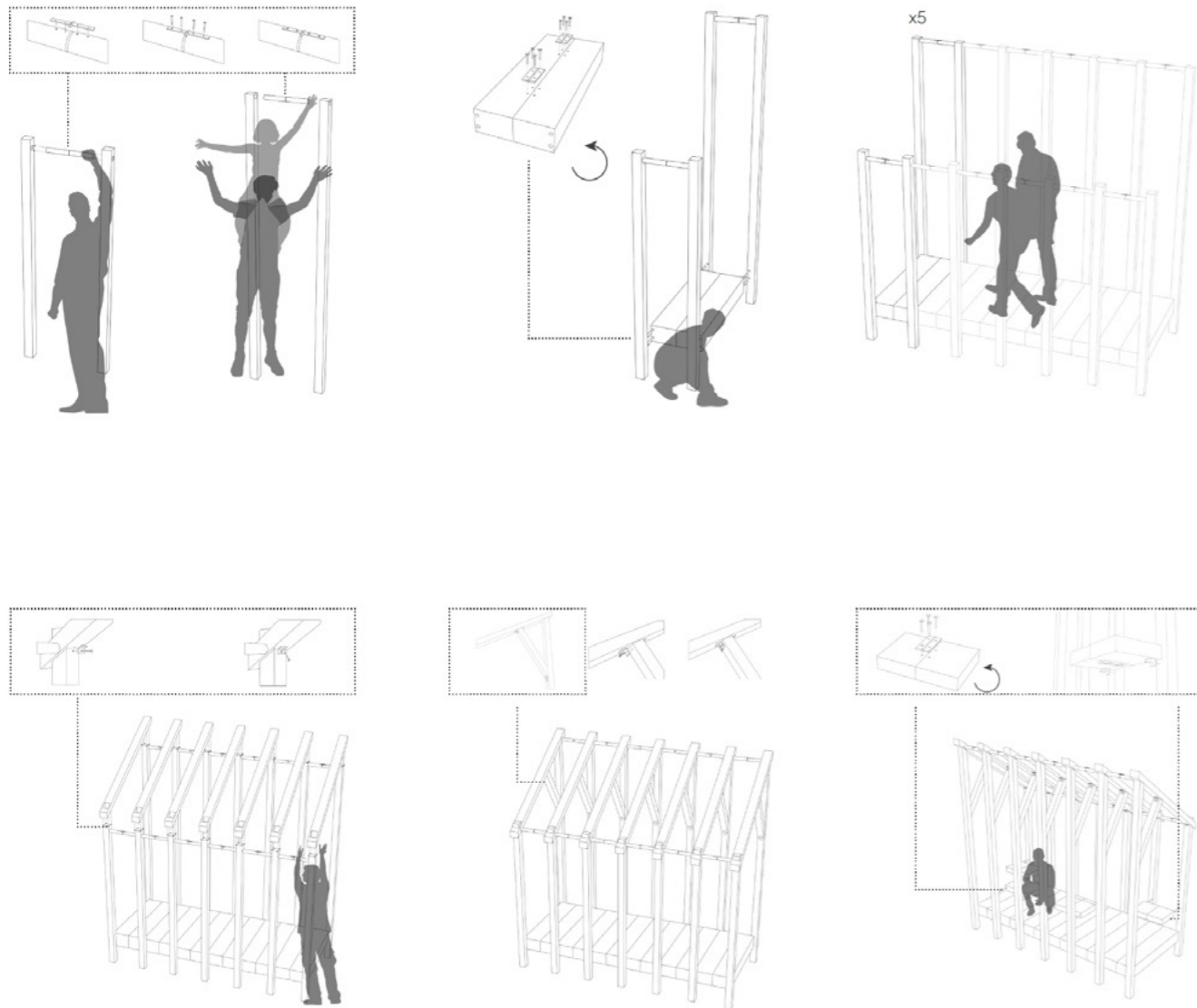


Deforestation Observatory, Lochaber

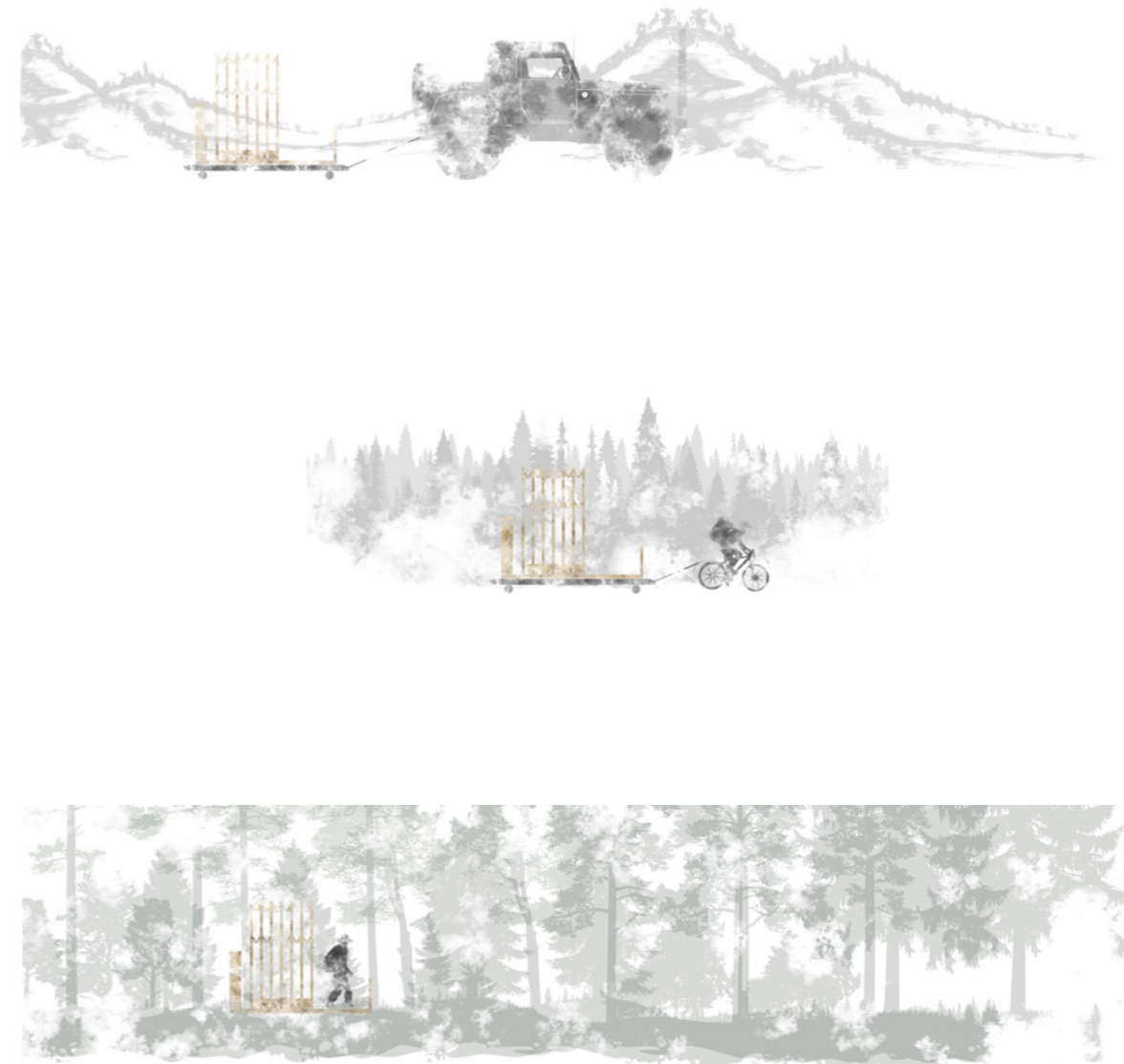
Low-Impact Approach



Kit-of-parts



Climate-Responsive Transport



Deforestation Observatory, Lochaber

Visualizations



Internal View



External View



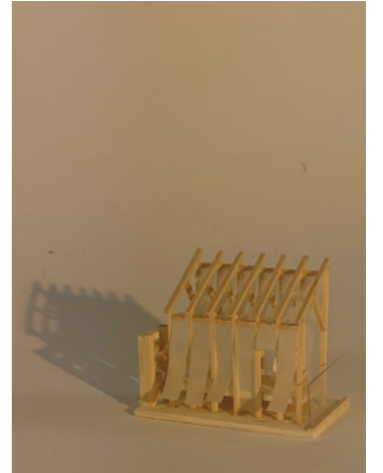
3D Models



1:5000 Plaster Cast Site Model



1:2000 Location Model

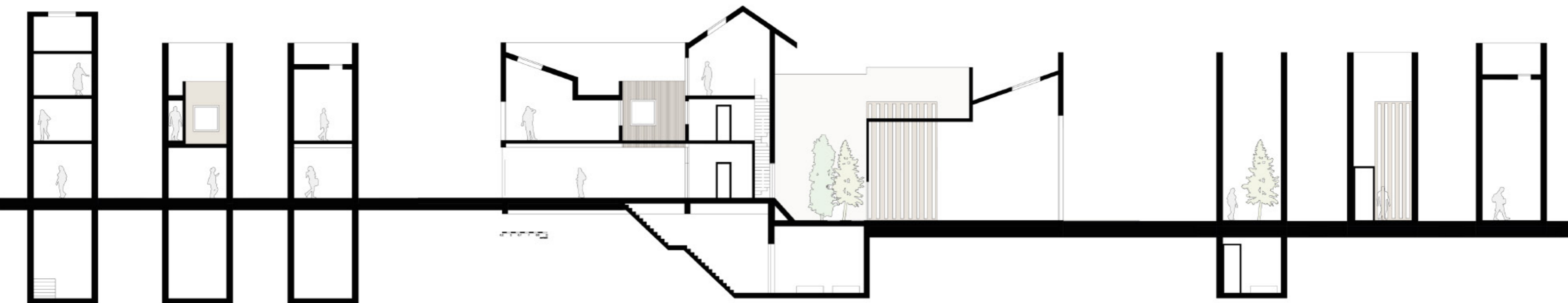


1:20 Proposed Model

Adaptations, Borneo Sporenbrug



I adapted an existing residential building to accommodate a new live/work typology, responding to changing spatial needs. The project involved reconfiguring internal layouts, integrating expanding volumes, and restructuring circulation to support both domestic and productive uses within a cohesive architectural language.

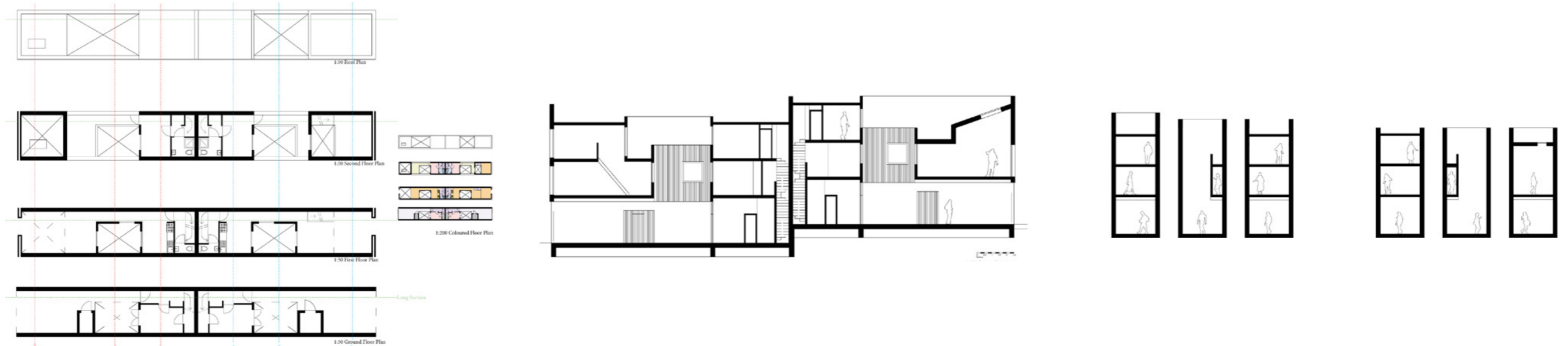


Adaptations, Borneo Sporenbrug

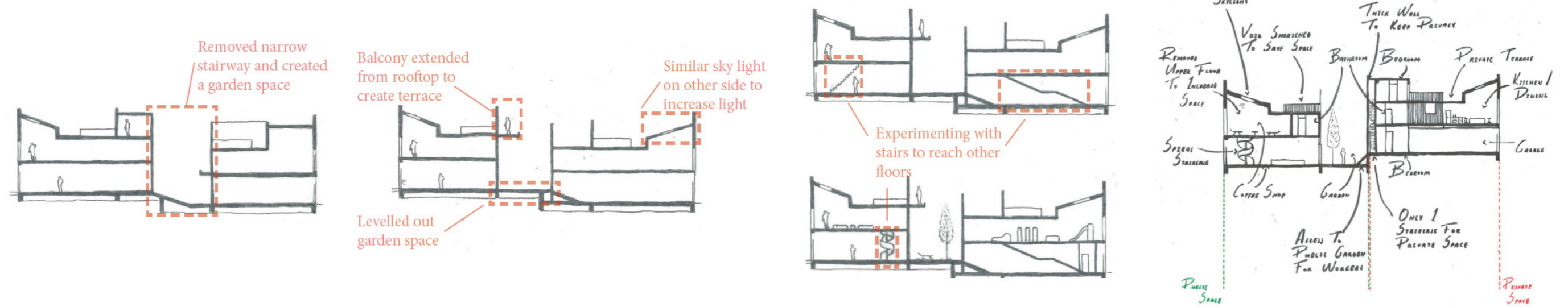
Spacial Configuration



Existing Building

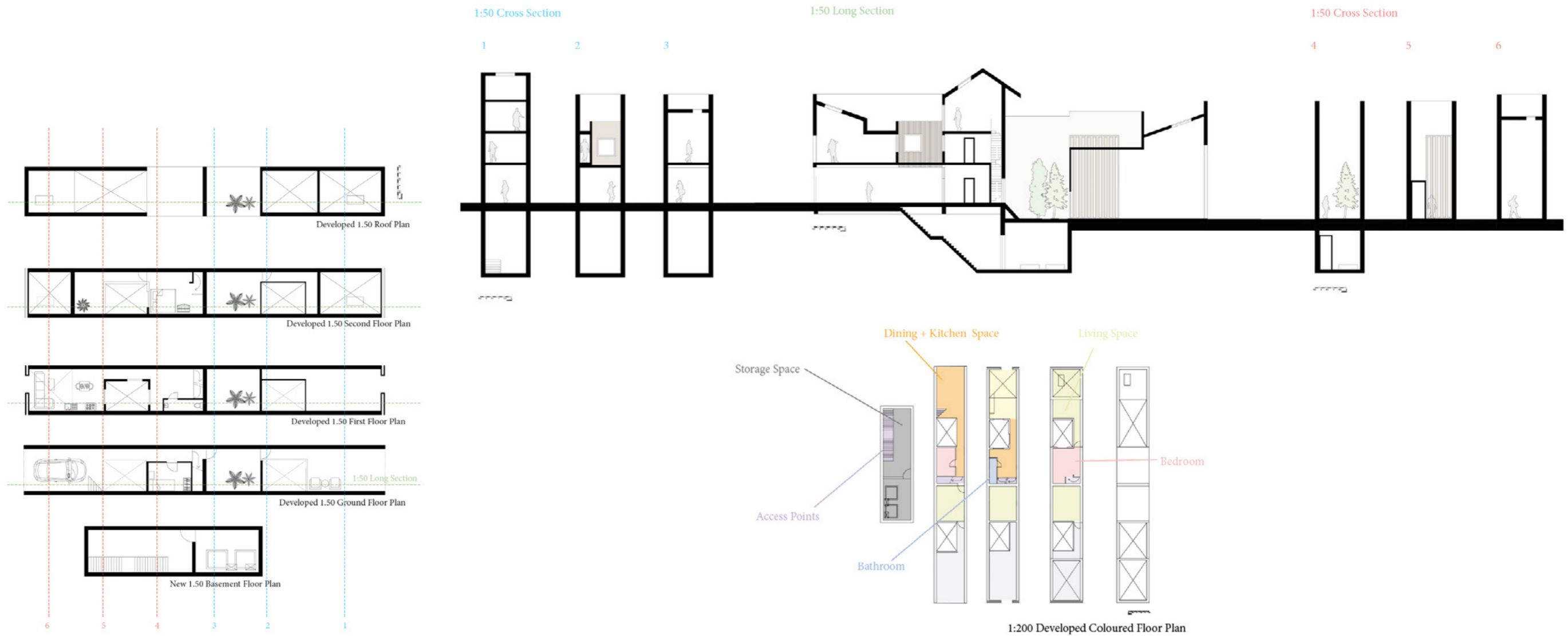


Testing Form and Assembly



Adaptations, Borneo Sporenbrug

Detail Drawings



Adaptations, Borneo Sporenbrug

Models



Public Space



Private Space



Volume Work

Collective Housing Initiative, Barcelona

I conducted a comprehensive site and urban analysis for a multi-generational social housing scheme, focusing on spatial inclusivity, accessibility, and communal living. The design proposed shared architectural spaces that promote interaction among diverse groups, strengthening social cohesion within a dense urban fabric.



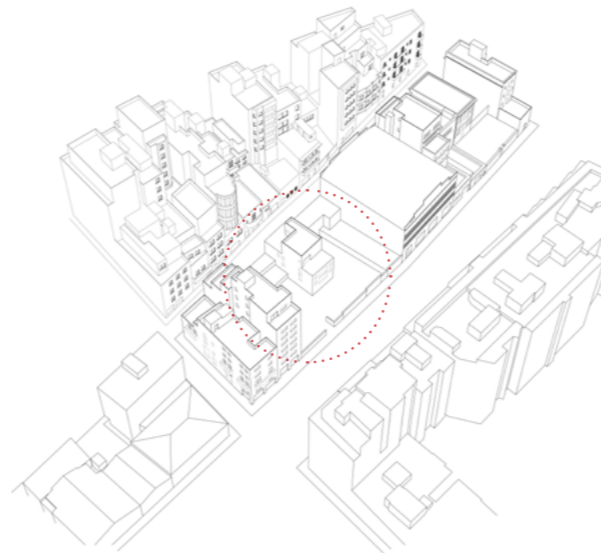
Collective Housing Initiative, Barcelona

Site Strategy

Location Plan



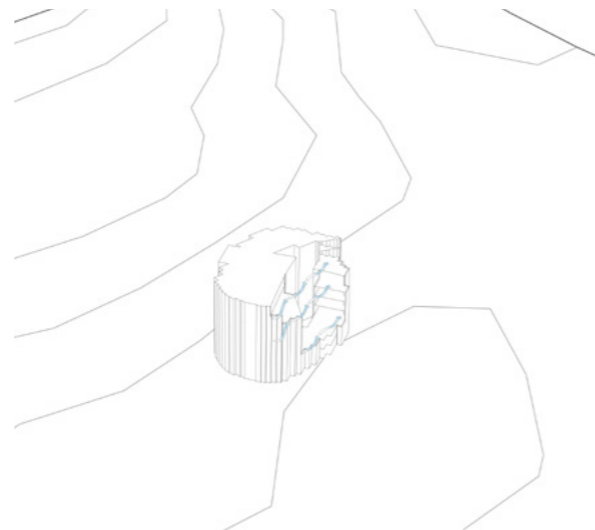
Site Axo



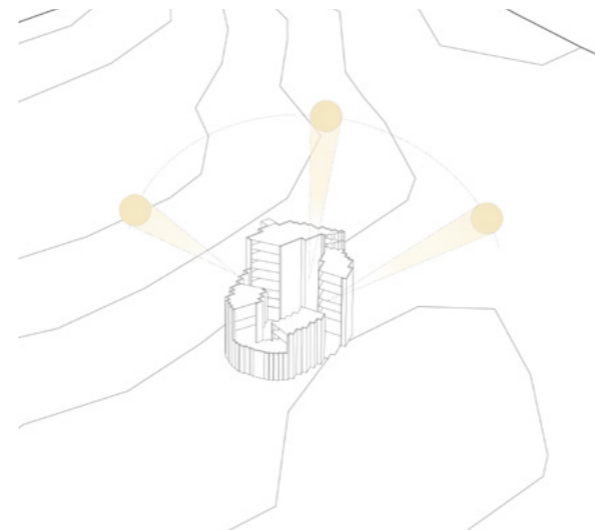
Visual Axes



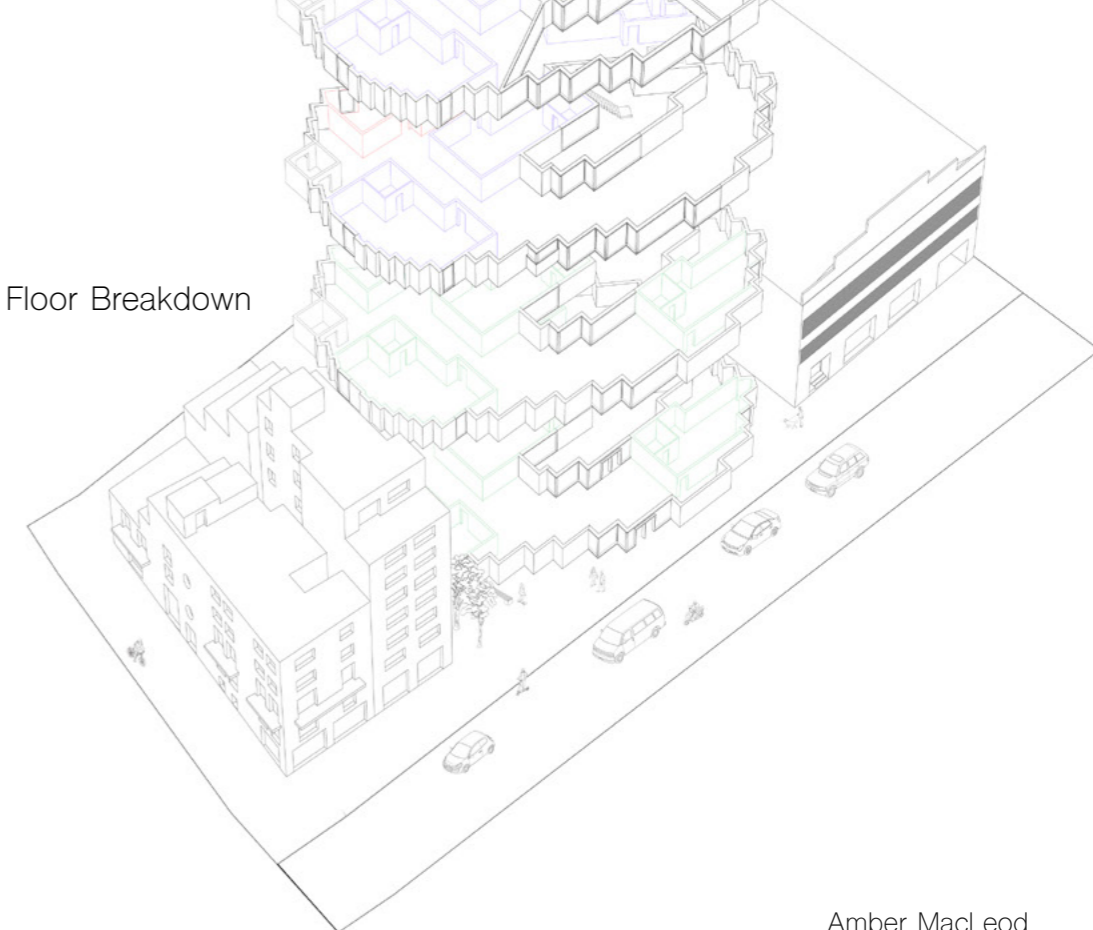
Ventilation Corridors



Solar Orientation



Floor Breakdown

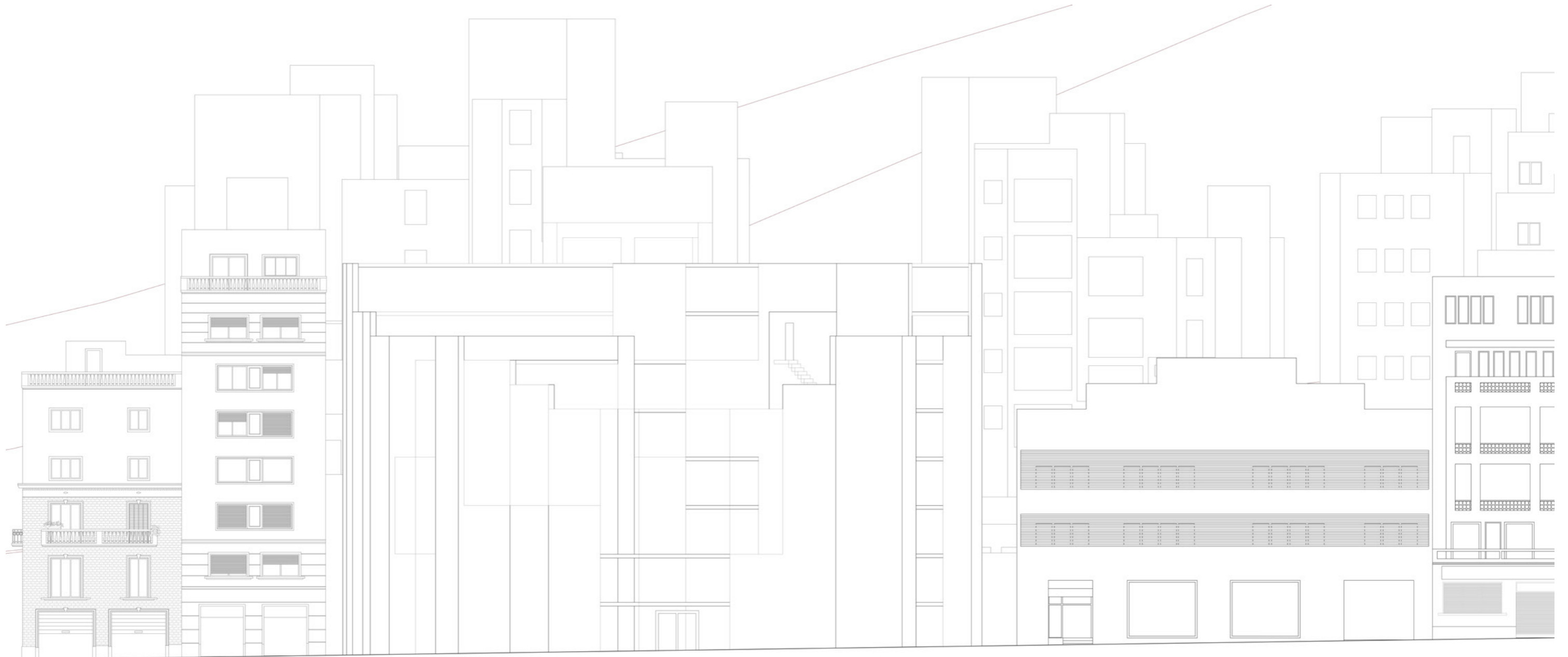


Collective Housing Initiative, Barcelona

Details



Avinguda de Vallcarca Elevation



Collective Housing Initiative, Barcelona

Details



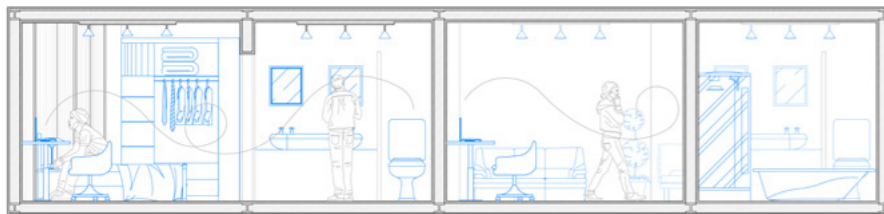
Detail Section



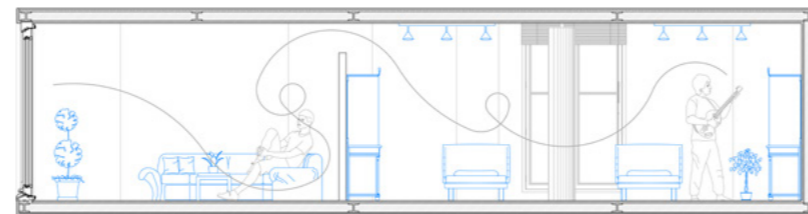
Avinguda de Vallcarca Section



Student Unit



2 Person Unit



3 Person Unit

