



Cazandra Romano
Architecture Portfolio

Cazandra Romano

cazandraromano@gmail.com

201-467-1537



Pratt Institute B.ARCH
2020 - 2025

Contents

Marketplace & Learning Center.....	01
Tompkins Children’s Center.....	02
Multi-Generational Housing.....	03
Mott Haven Library Addition.....	04
Prospect Park Water Ecologies.....	05
The Meadowlands: A Potential Oasis.....	06
Rebrand: phafil.....	07

Marketplace & Learning Center

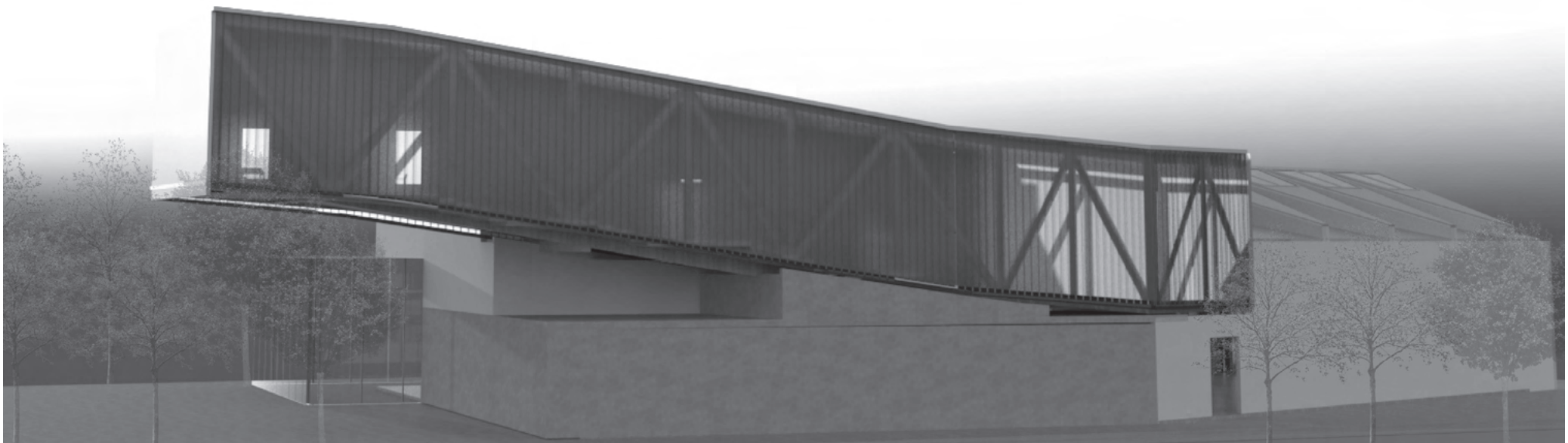
Spring 2023 / Third Year

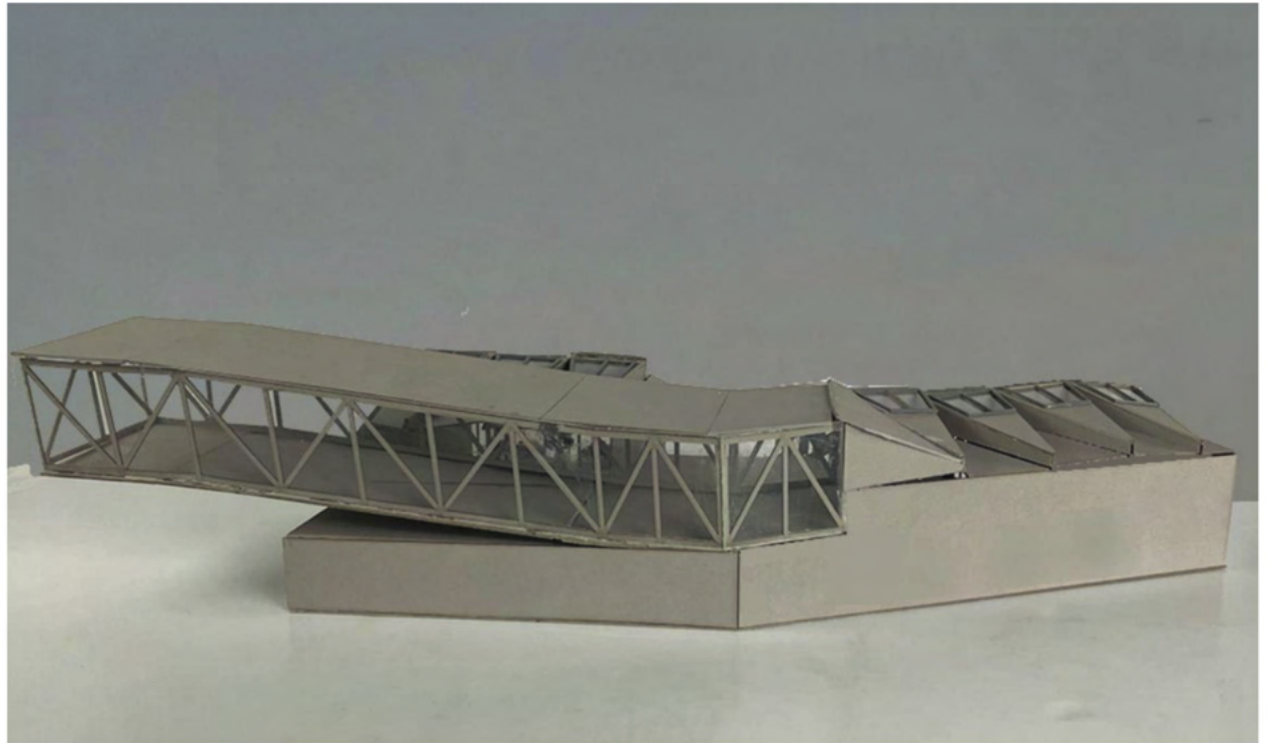
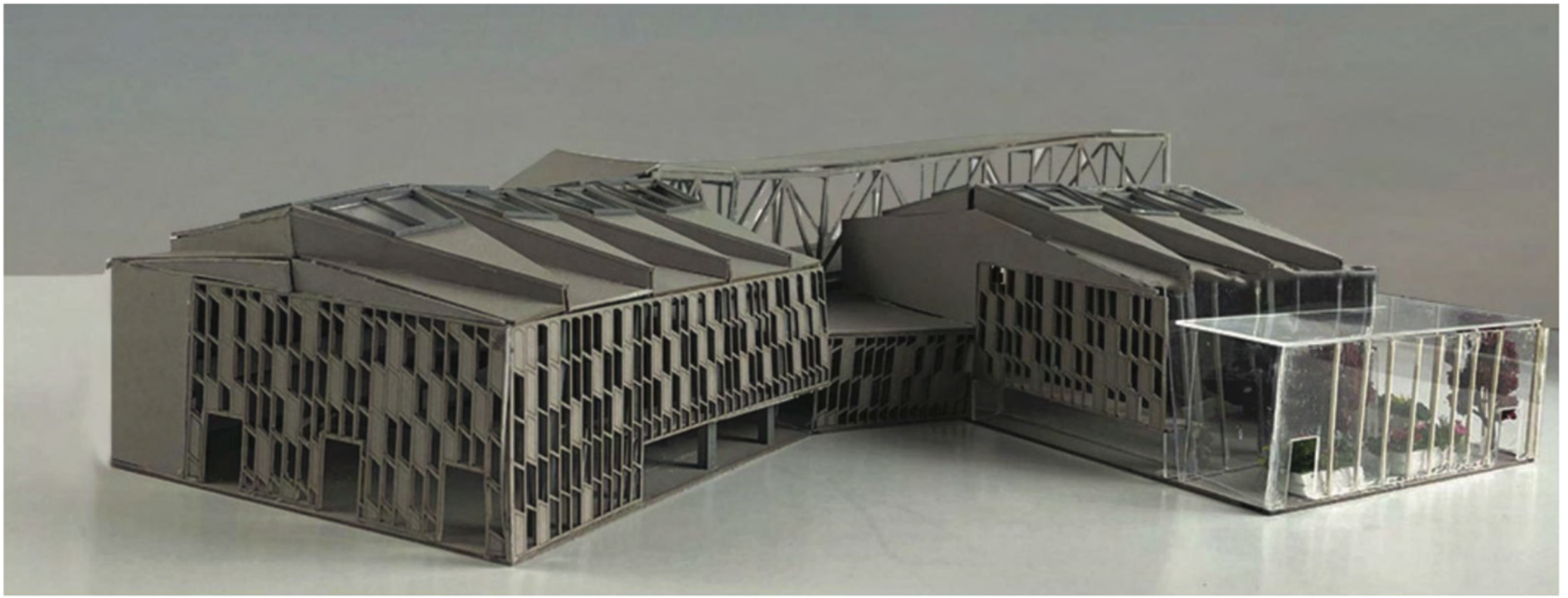
Partner: Bhavya Pitta

Critic: Giuliano Fiorenzoli

Located in Sara D. Roosevelt Park in the Lower East Side, this project encompasses a diverse range of public and private spaces. The program includes a large-scale market, both interior and exterior dining areas, and a kitchen. Additionally, there are administrative offices, classrooms, underground parking, a greenhouse, and exterior gardens.

The design engages the surrounding streetscape to offer moments of interaction from all directions. The market and dining areas are sheltered by a large gable-like roof supported by a truss system. To reach the administration offices and classrooms, circulation is provided via a ramp that spans the market below. The upper level features a semi-transparent cantilevered truss structure with a facade that combines solid elements and glass, offering a balance of privacy and transparency.

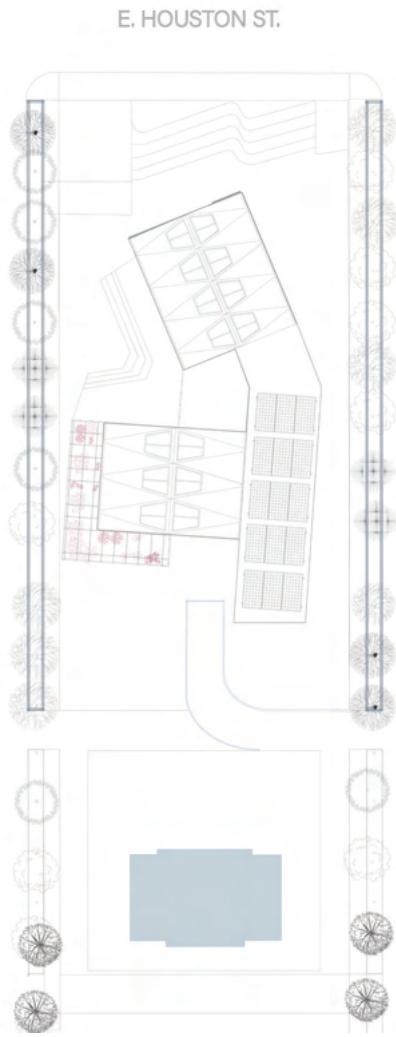






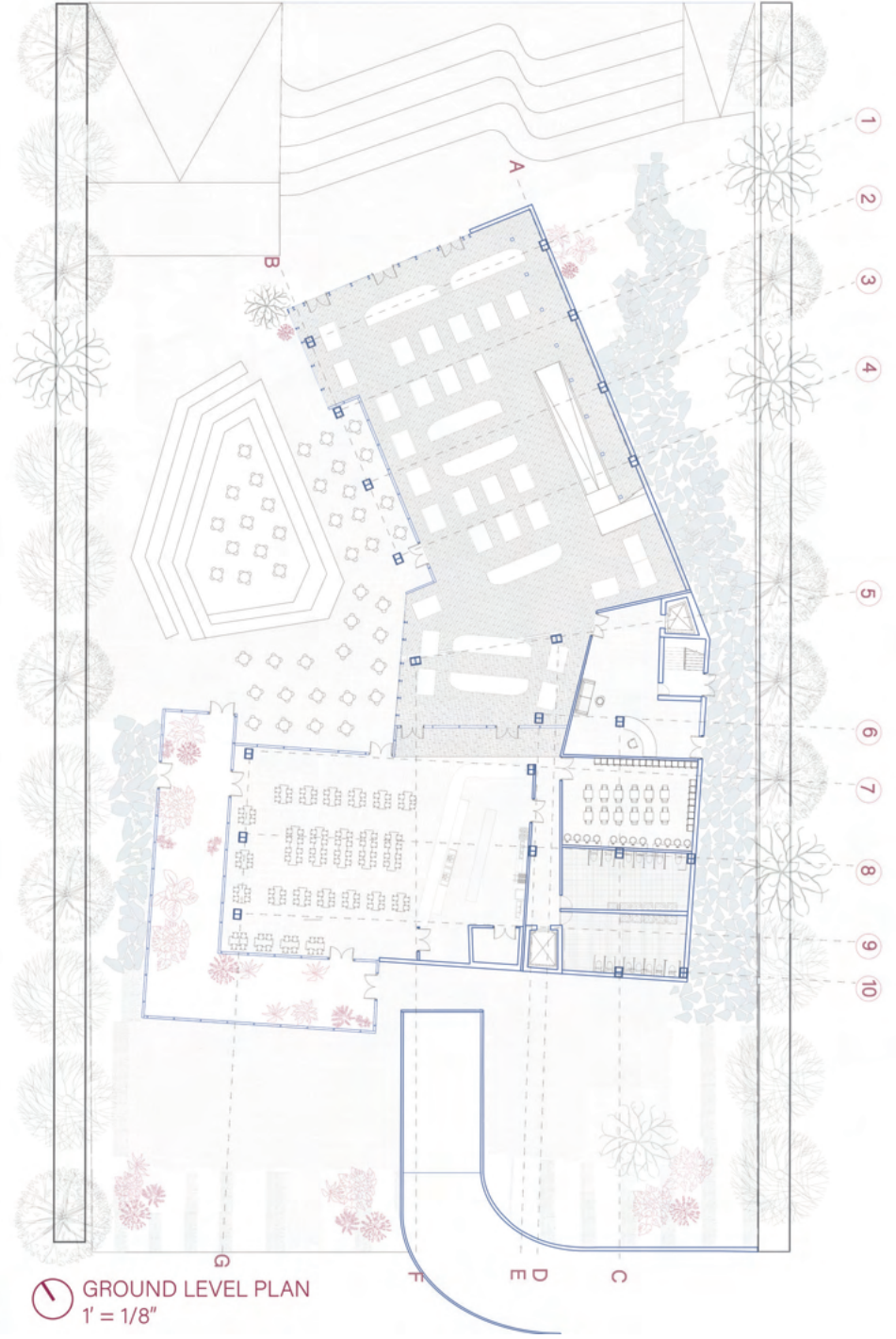
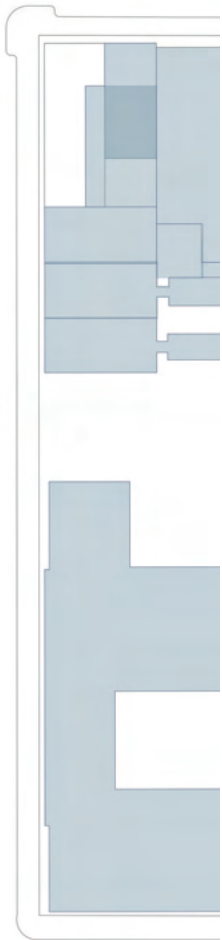

SITE PLAN
 1' = 1/16"

CHRISTIE ST.



E. HOUSTON ST.

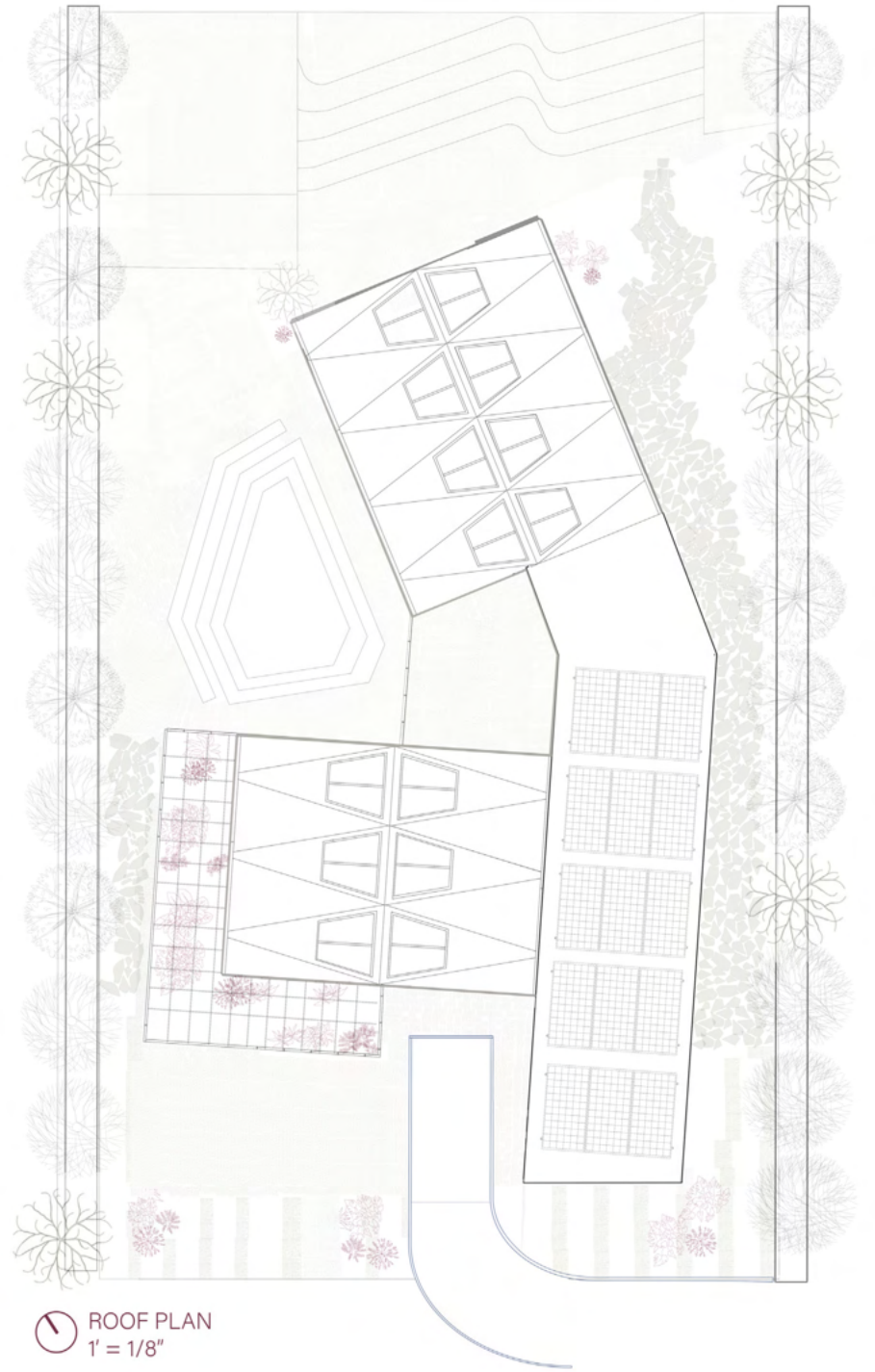
FORSYTH ST.



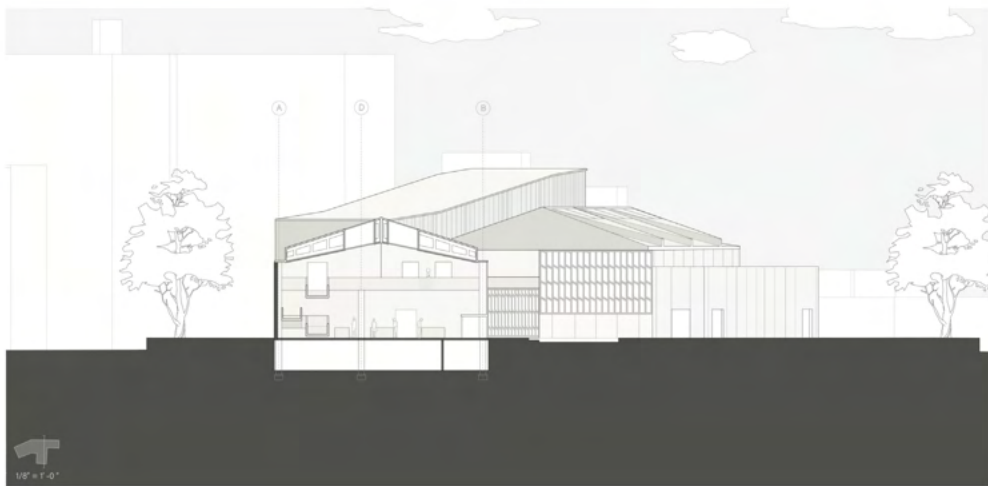

GROUND LEVEL PLAN
 1' = 1/8"



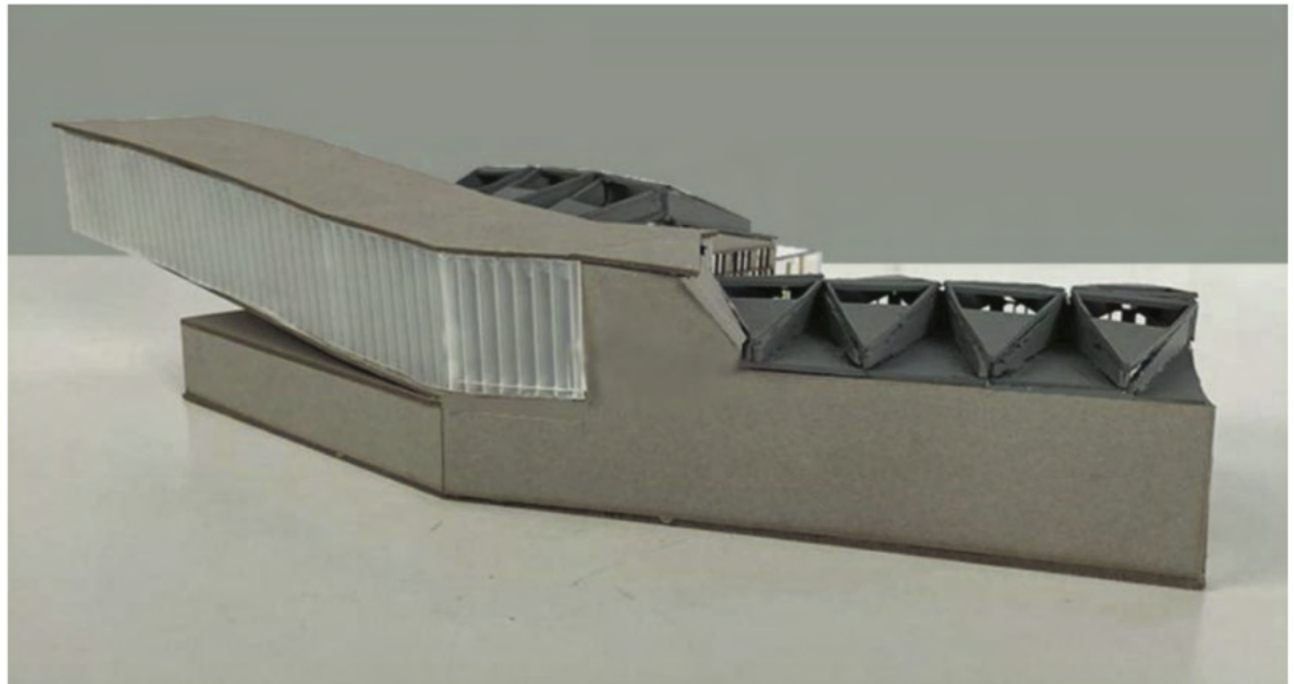
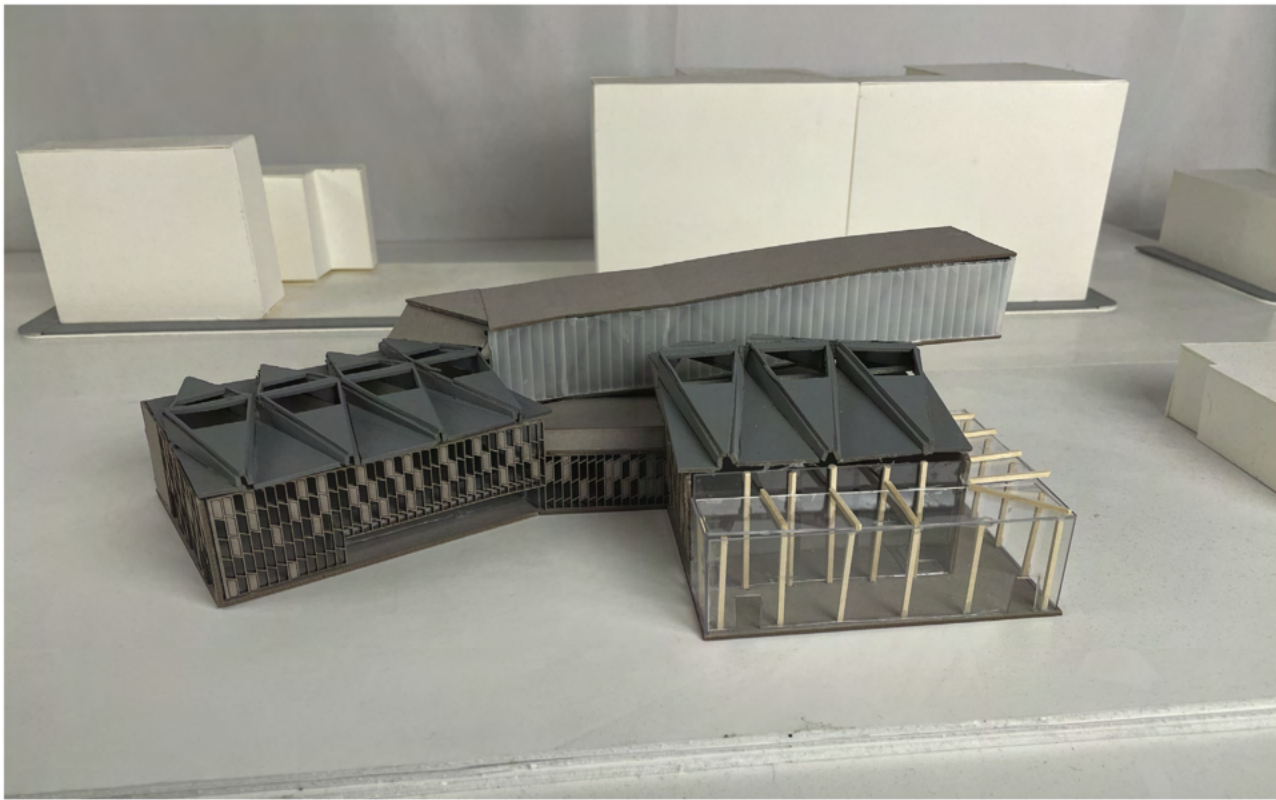
UPPER LEVEL PLAN
 1' = 1/8"

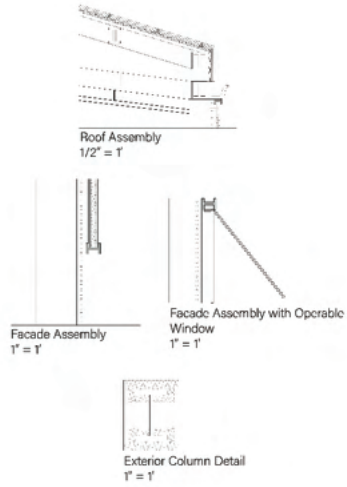
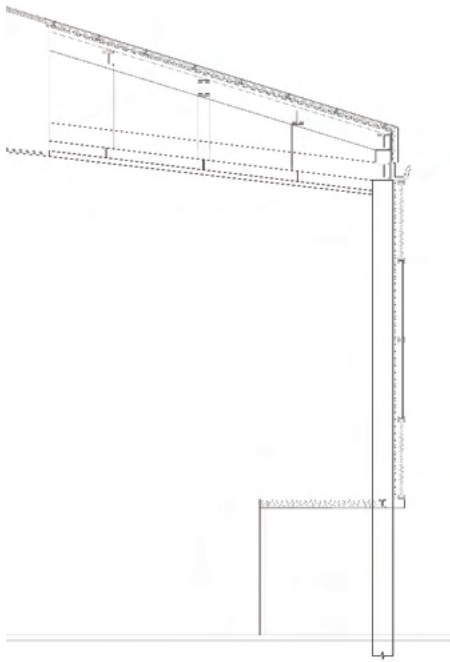


ROOF PLAN
 1' = 1/8"

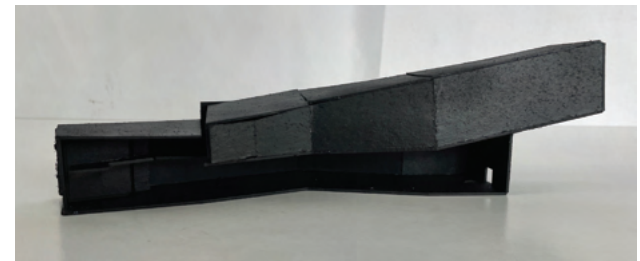
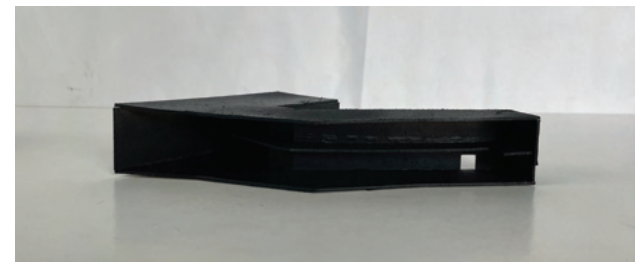
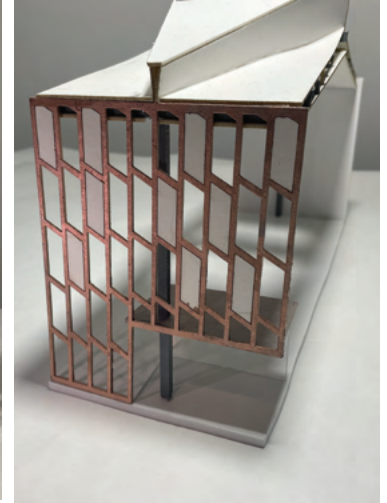








Market Facade Details
1/2" = 1'



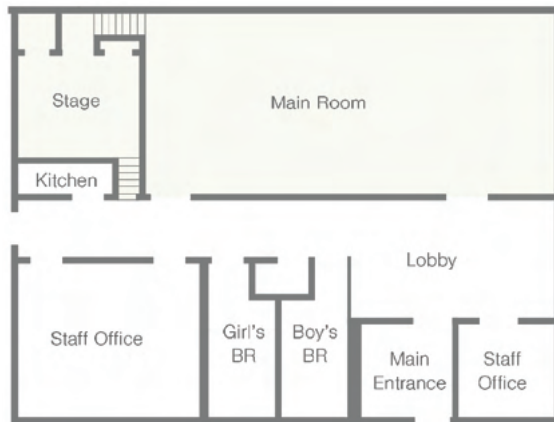
Study Models

Tompkins Children's Center

Fall 2024 / Fifth Year
Critic: Mark Rakatansky

This project reimagines the Tompkins Community Center into a youth focused space that accommodates children of various age groups. It addresses two key aspects of citizenship: the role of the children using the center and the center's integration within the Tompkins NYCHA site.

Currently, the center serves children in grades K-5 and 6-12, but only one group can use the space at a time. The redesign enables both age groups to engage simultaneously, with designated areas tailored to their needs. The younger children's area is closer to administrative spaces for supervision, while the teen area fosters independence, featuring a makerspace, study lounge, and social spaces.

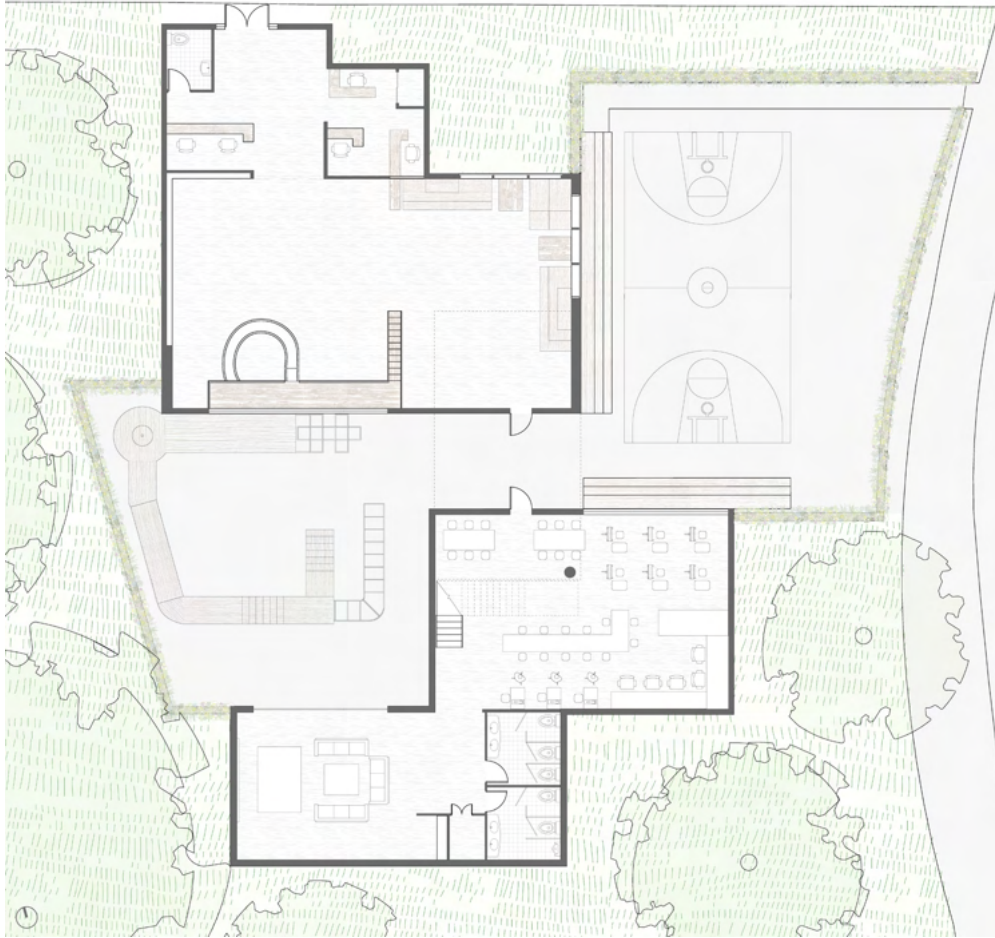


Existing Building Plan

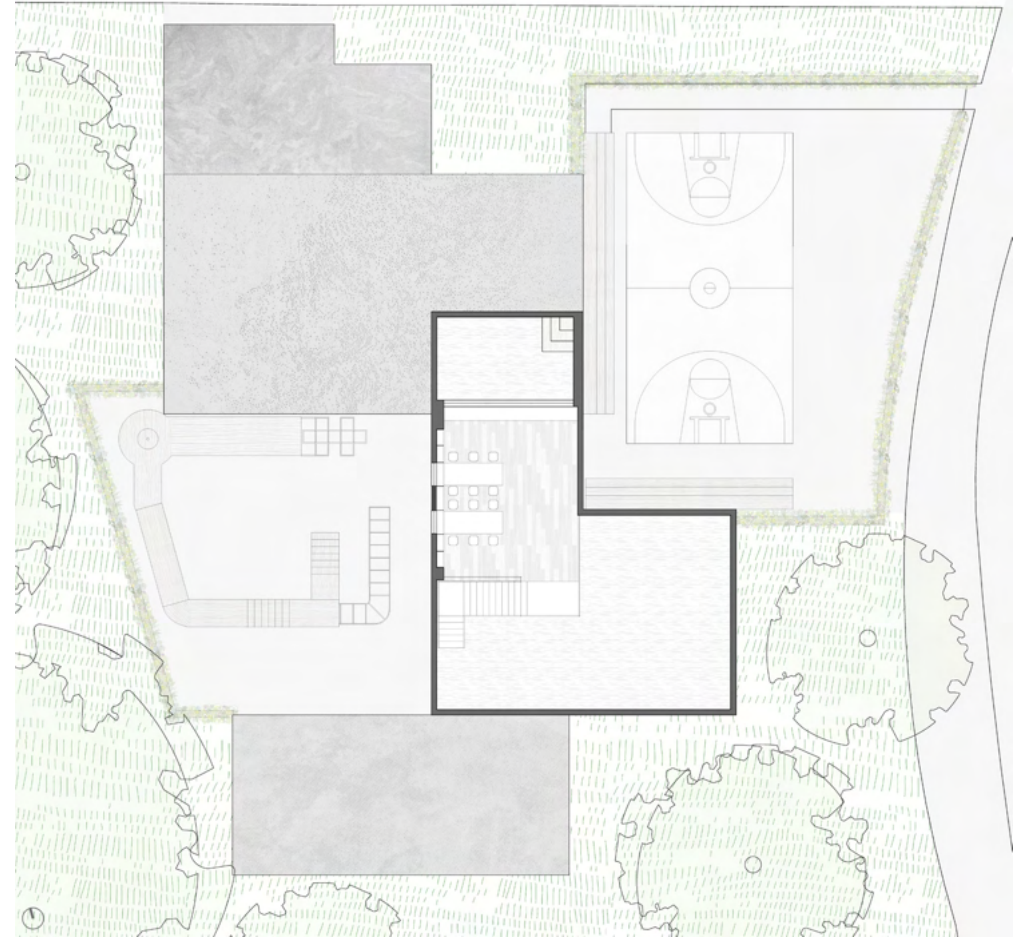


Site Photographs





Ground Level Plan



Upper Level Plan

To improve the site's connection to the surrounding neighborhood, the new design places the center at the edge of the site and softens the typical NYCHA fencing with planters, creating a more welcoming and integrated environment.





Multi-Generational Housing

Fall 2022 / Third Year

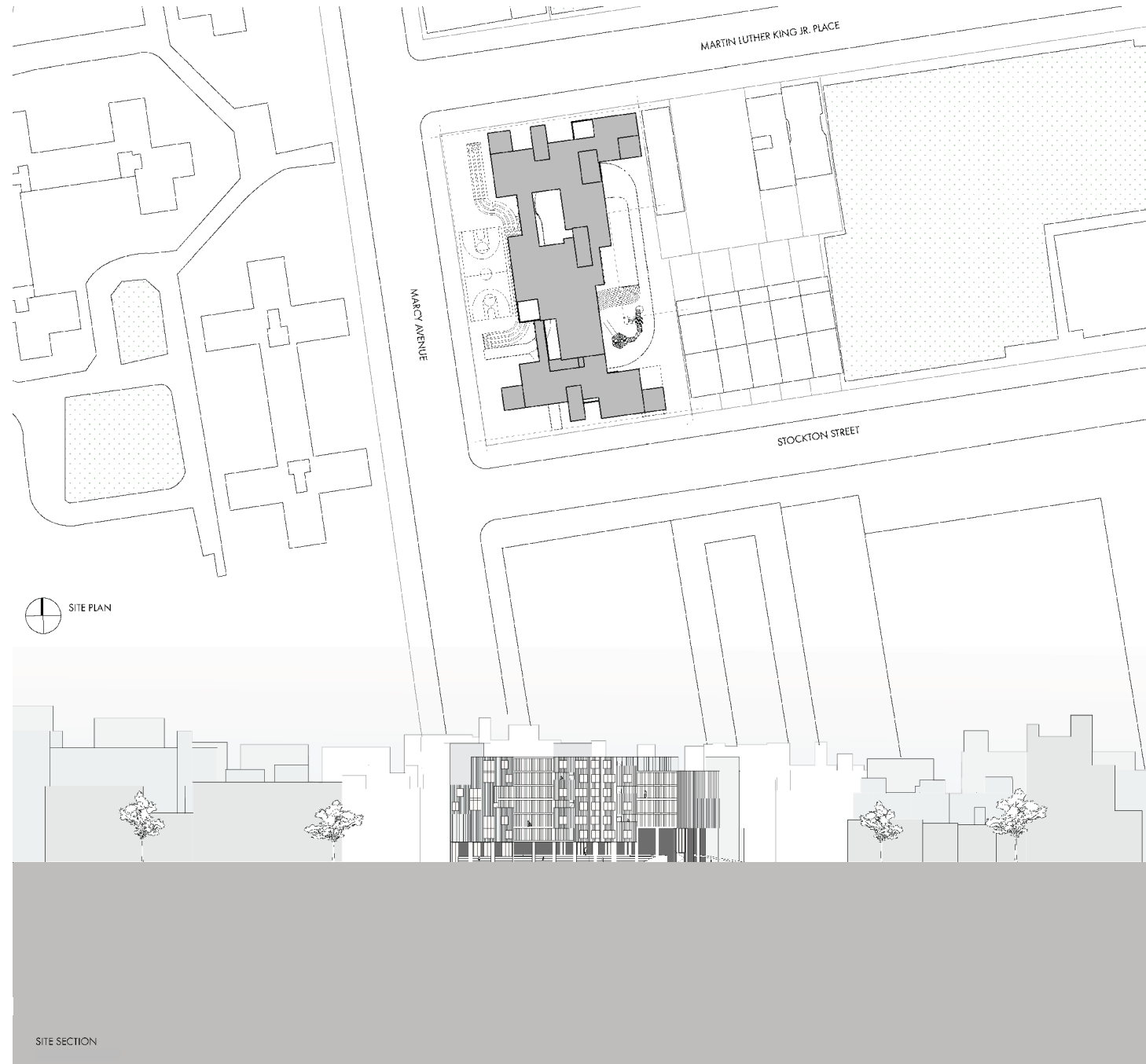
Partner: Reeshane Villarama

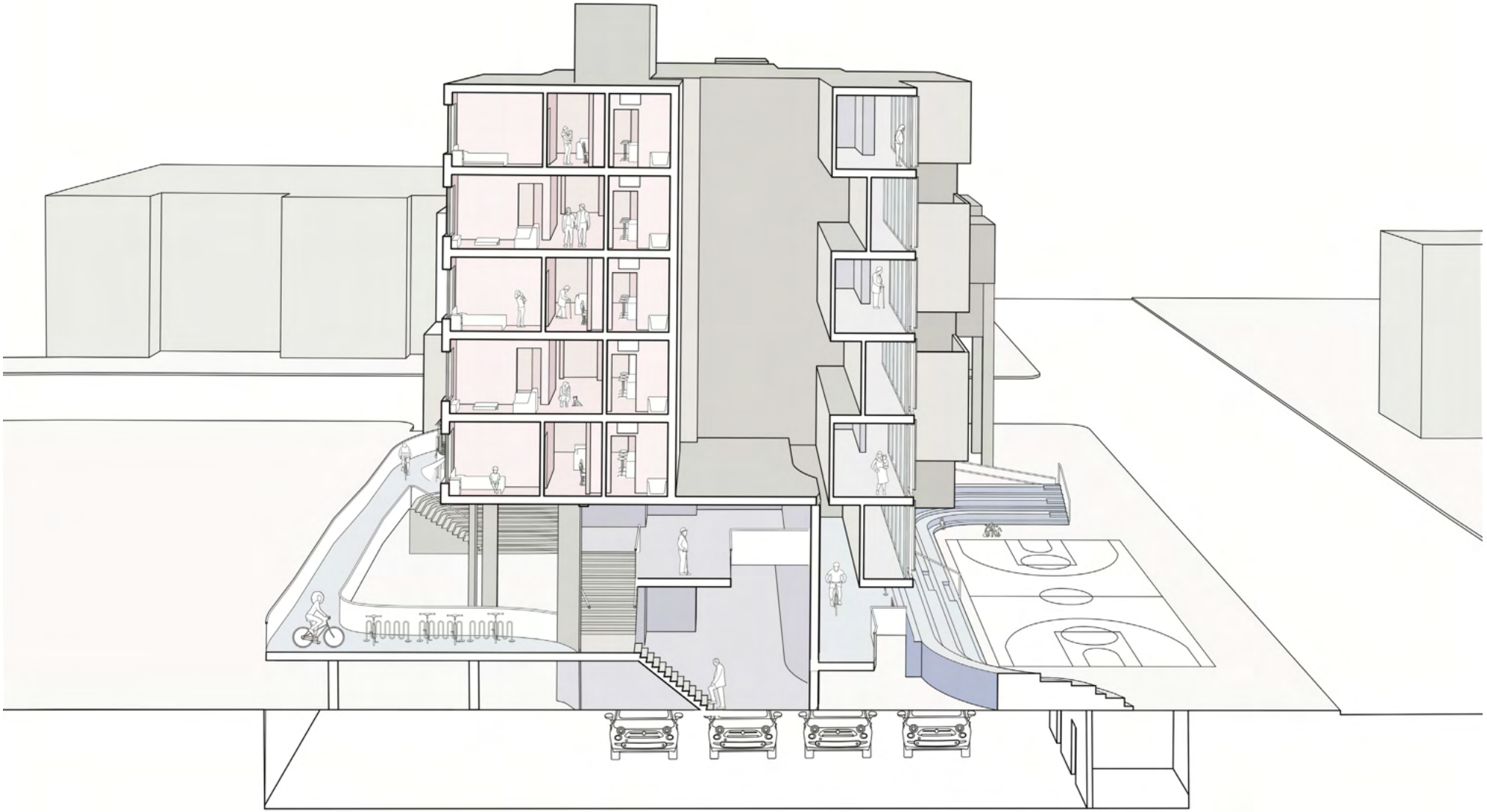
Critic: Leonard Leung

Located in Bedford–Stuyvesant, the drive for this project is the desire to foster intergenerational bonds and strengthening connections between older and younger generations.

Additionally, a key objective is to reclaim a portion of the space for public use to enhance community engagement. At the ground level, a meandering ramp weaves through the site, creating an active communal environment and facilitating various interactions. This ramp not only shapes the layout of the ground floor but also inspires design elements such as the seating arrangements at the basketball court.

The facade of the structure incorporates wood, glass, and metal. Residential units feature wooden facades with glazed elements, promoting a sense of warmth and transparency, while public areas have glass facades adorned with metal louvres, offering functional sun shading properties.

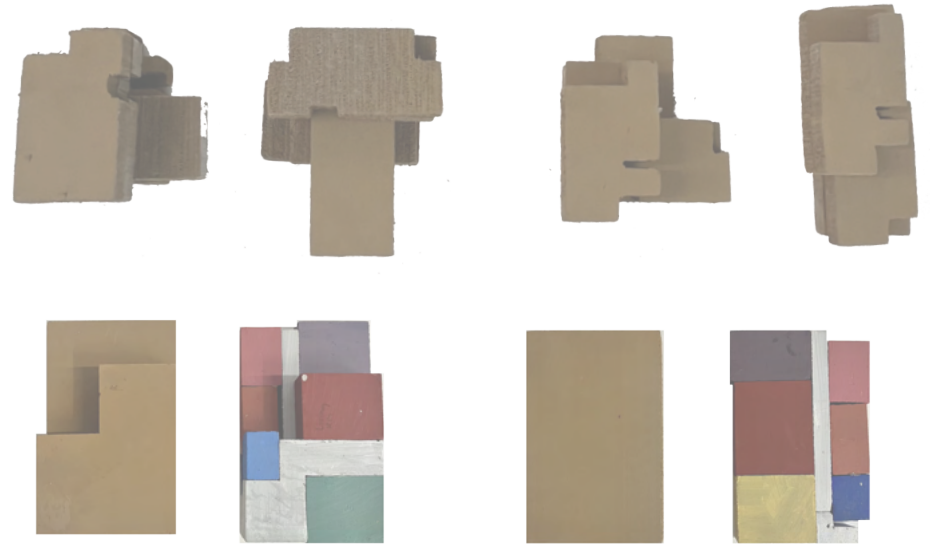




SECTION
3/32" = 1'



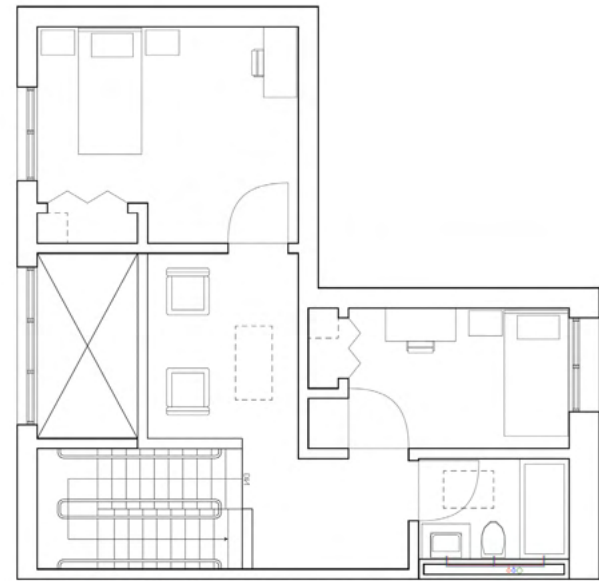
TYPICAL UNIT 1 PLAN



Unit Arrangement and Layout Studies

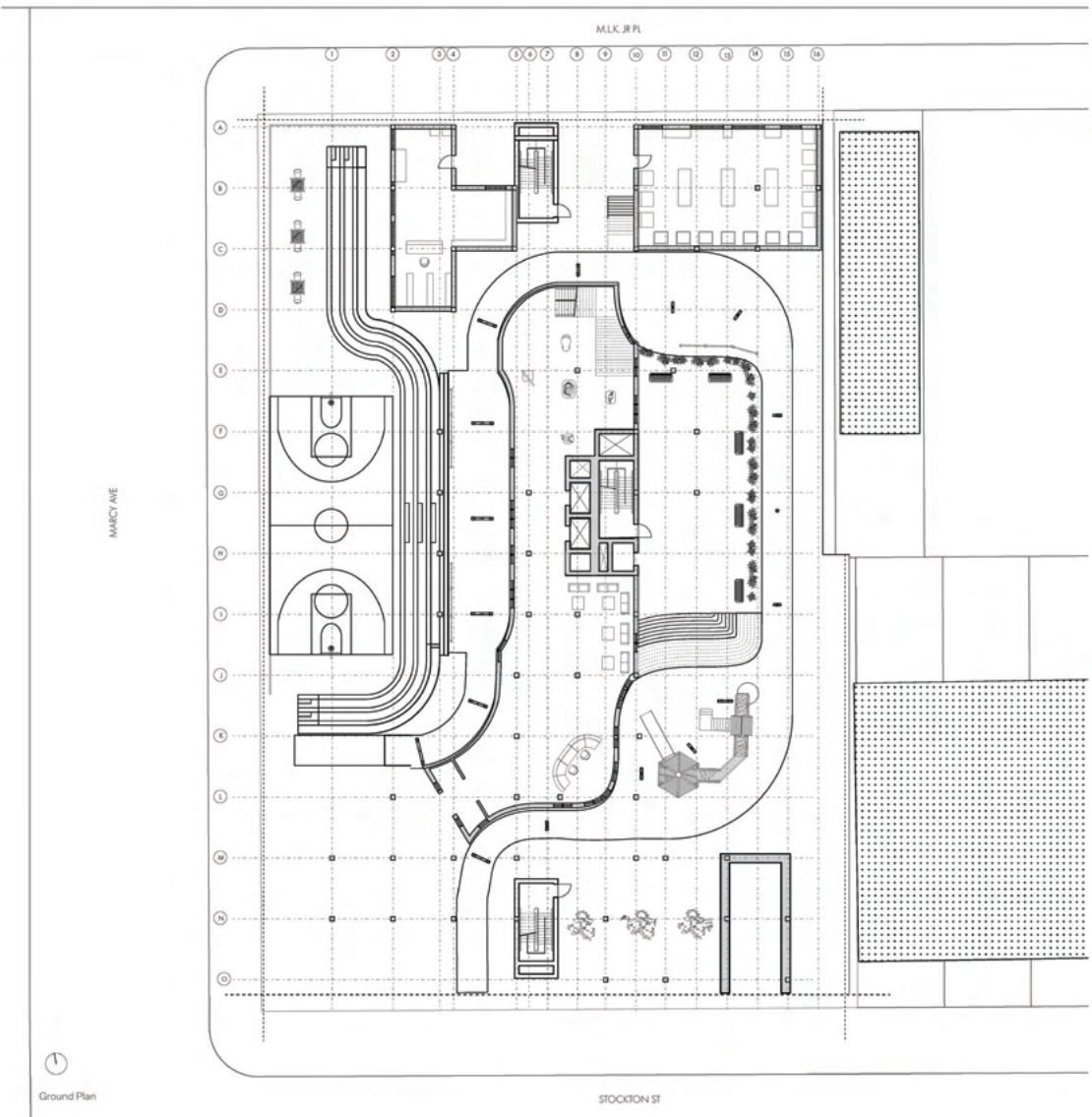


TYPICAL UNIT 2 PLAN LEVEL 1



TYPICAL UNIT 2 PLAN LEVEL 2

There are two distinct unit types: single-floor units with three bedrooms and duplex units with three bedrooms. The master bedrooms in both unit types are strategically positioned to provide easy access to living areas, bathrooms, and kitchens, prioritizing convenience and accessibility for older generations. This layout enhances the comfort and independence of senior family members but also promotes close proximity and interaction among all family members.



Ground Plan



Typical Plan 1



Typical Plan 1



NORTH ELEVATION



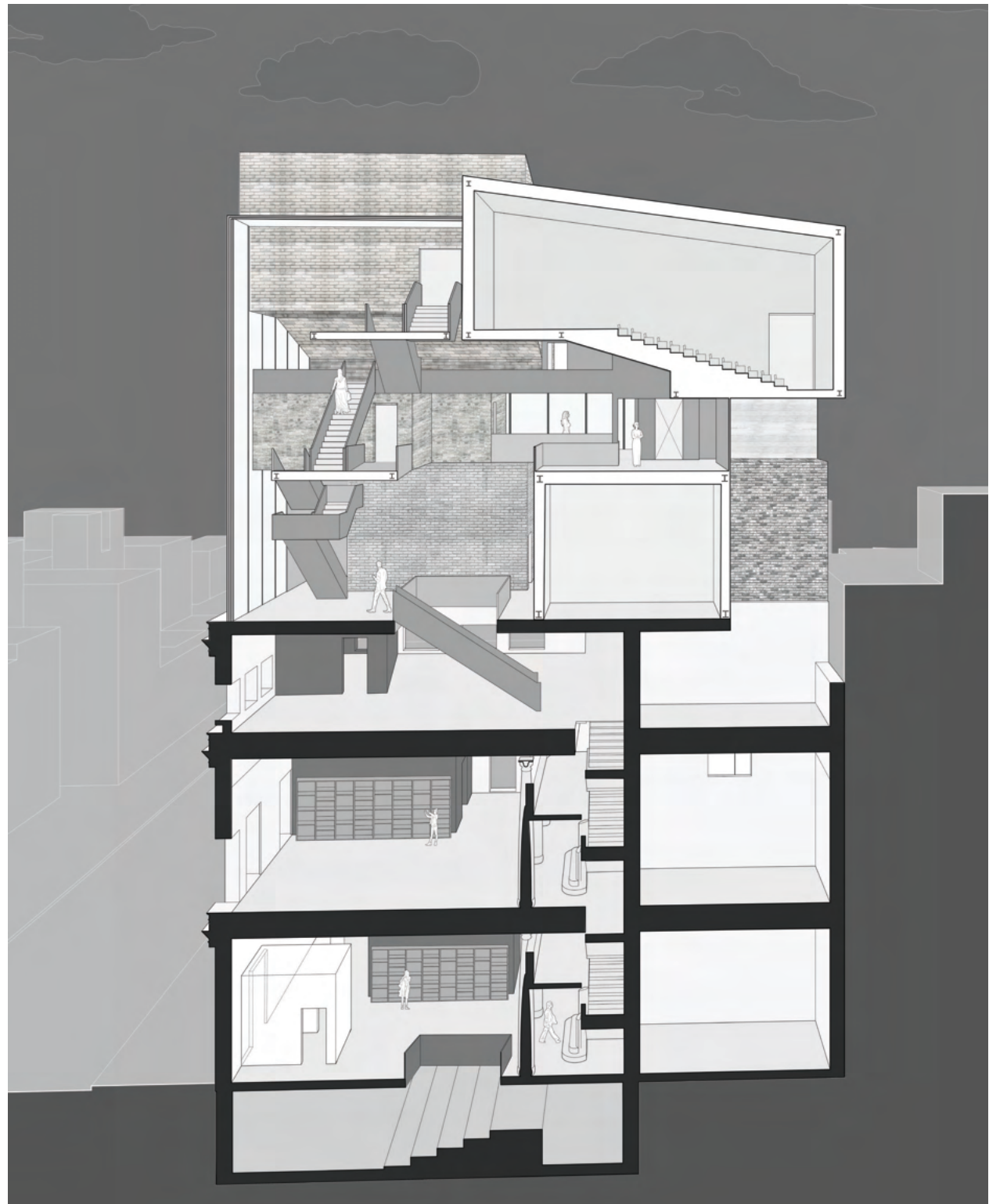
WEST ELEVATION

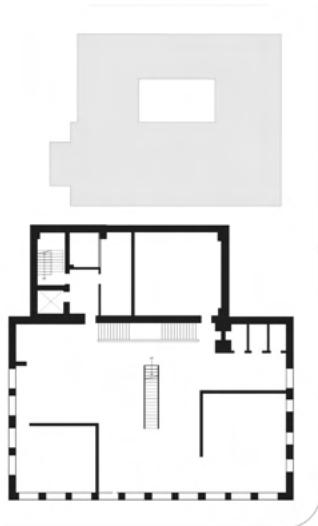


Mott Haven Library-Theater

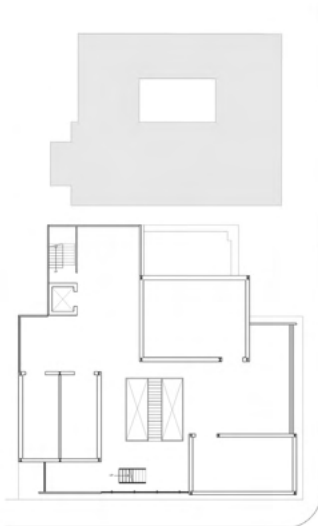
Fall 2022 / Second Year
Critic: Maria Vrdoljak

This project is an addition to the existing Mott Haven Library located in the Bronx. The design uses a balance of volumes to blend solid structures with open spaces. These voids are ingeniously utilized to accommodate open program and foster an inviting atmosphere for community engagement. The solid volumes house enclosed programs to ensure privacy and functionality. The program includes theaters, classrooms, and filming studios, catering to a wide array of cultural and educational needs. Through this project, it helps to enrich the cultural landscape of the Bronx while providing a dynamic hub for learning, creativity, and community interaction.





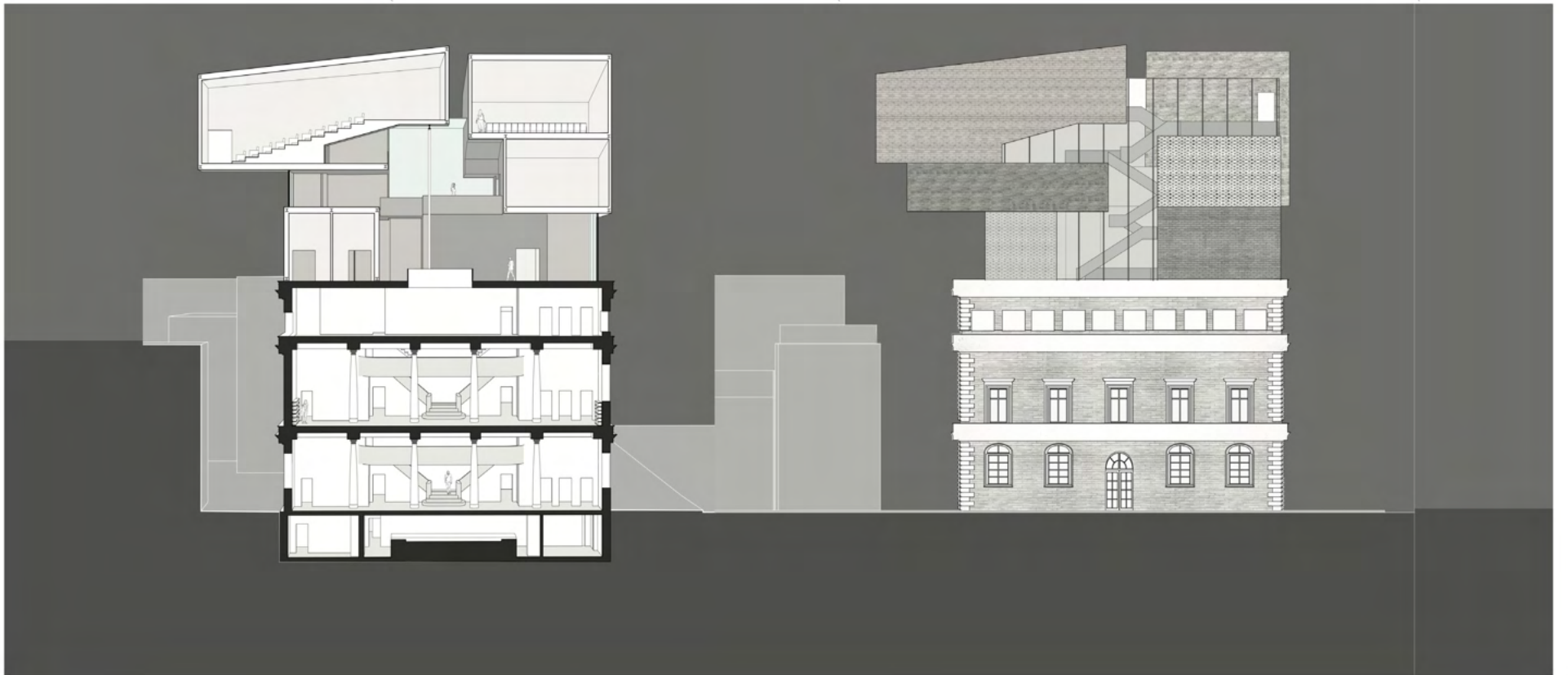
Third Floor



Fourth Floor



Seventh Floor



Prospect Park Water Ecologies

Spring 2024 / Fourth Year

Critic: Dragana Zoric

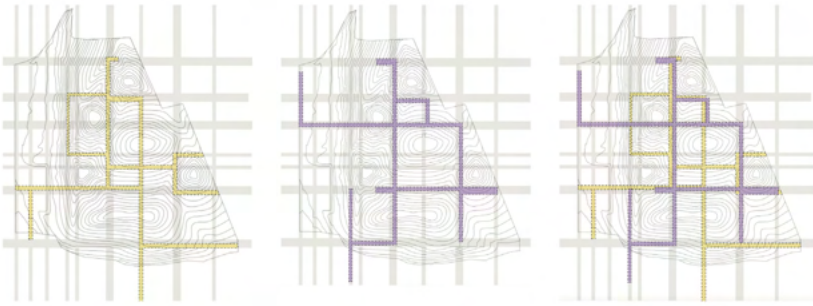
In envisioning the evolution of the site at Brooklyn's Prospect Park, my proposal integrates constructed wetlands into the landscape. It provides a sustainable solution for flood mitigation while enhancing biodiversity. The constructed wetlands will seamlessly merge with the terrain of the park and effectively manage water flow. This reduces flood risk by leveraging the ground's porous nature to absorb excess water.

Inspired by an initial grading exercise, I have integrated a grid pattern to organize elements of the landscape. This allows for the strategic placement of water bodies, pathways, and vegetation to enhance both functionality and aesthetic coherence.

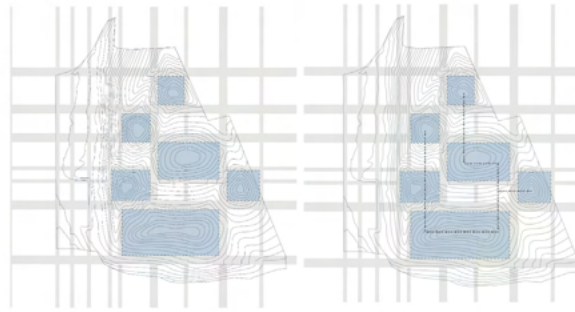
The grid is strict in the layout of built elements, but loose in terms of the organic elements. The water bodies will experience fluctuations in size as they gather and drain water. As the vegetation self sows and evolves over time, they will no longer be following the grid as strictly. Using this formal component on the site creates a cohesive layout in for the order to facilitate efficient water management and maximizing ecological benefits.



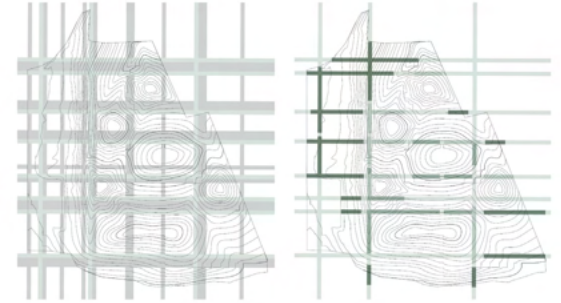
Circulation Grid



Water Grid



Plant Grid

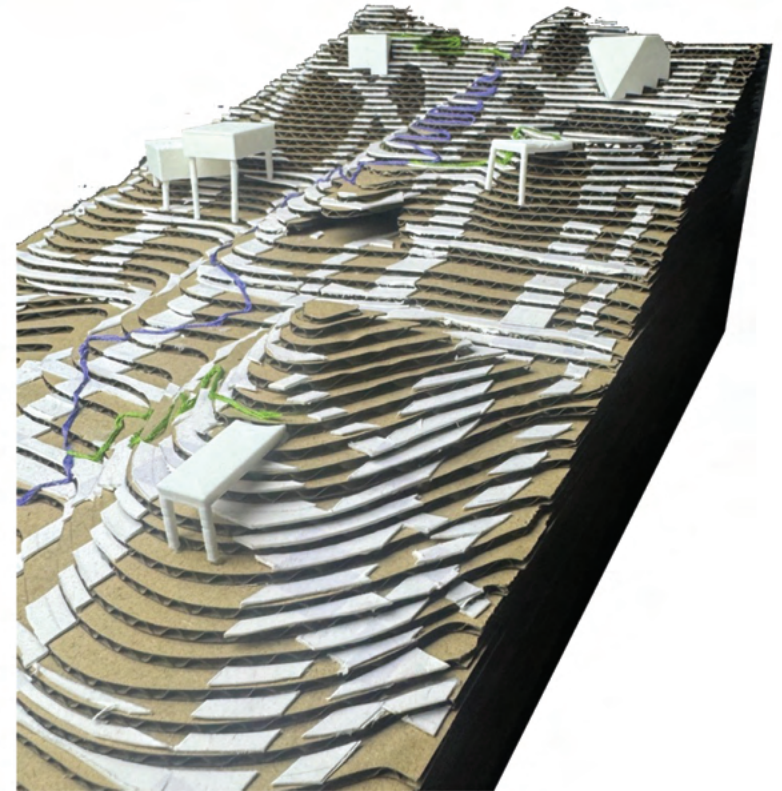
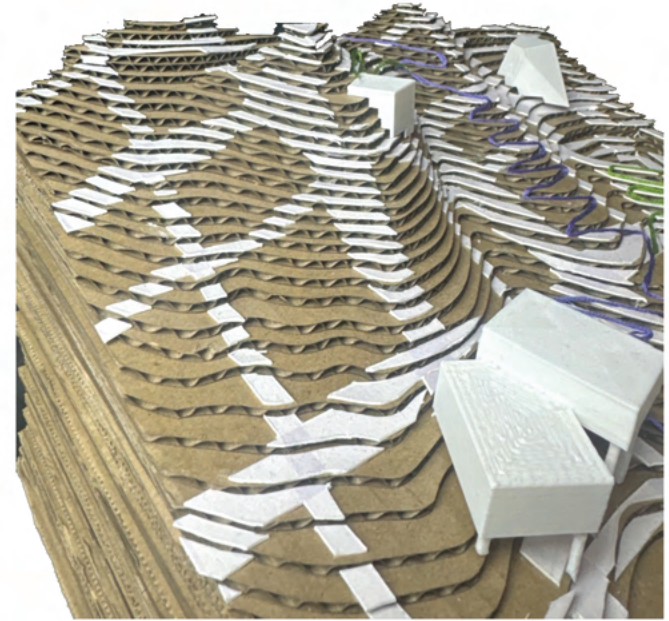
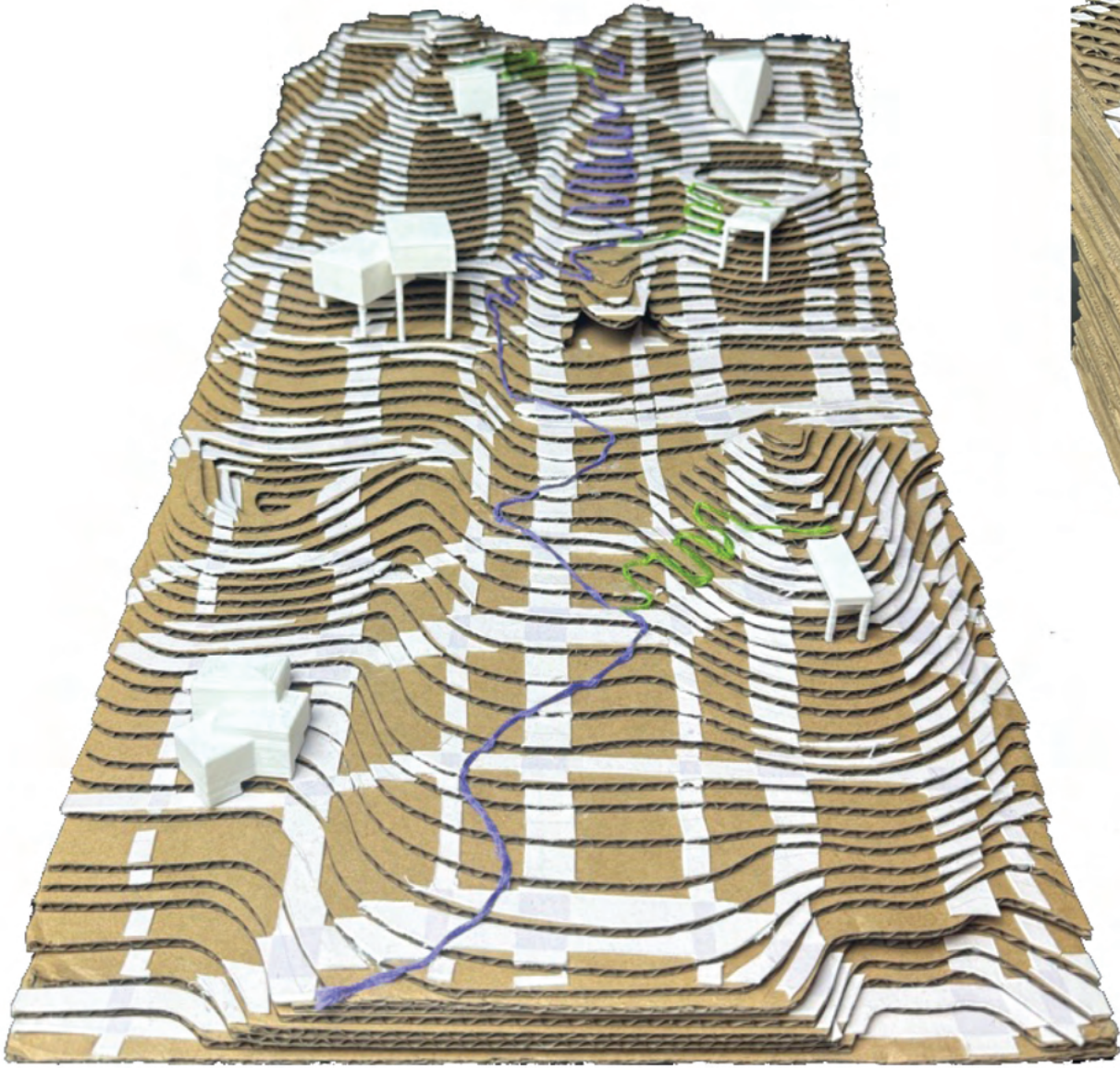


LEAST SATURATED

TYPICAL

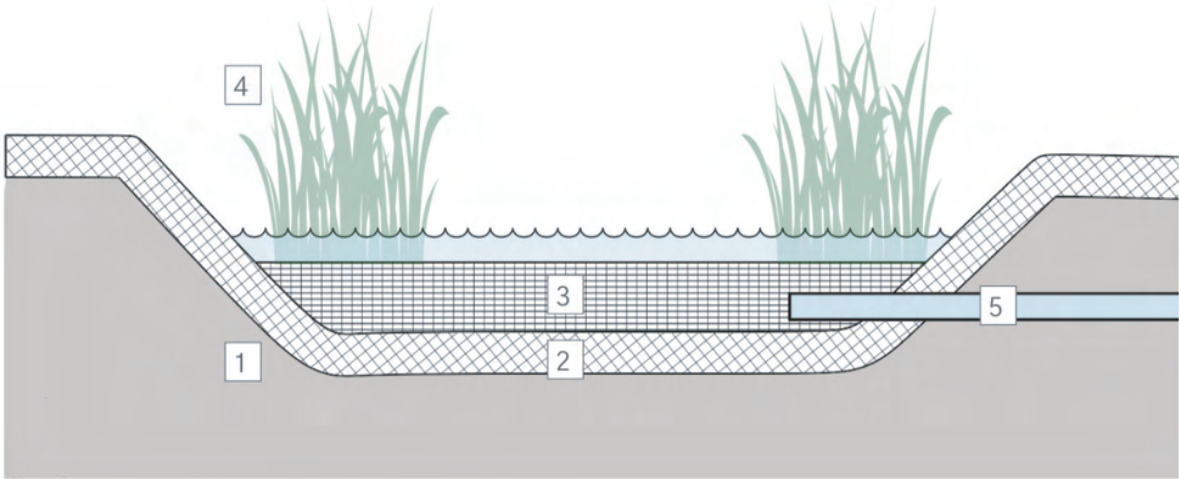
MOST SATURATED



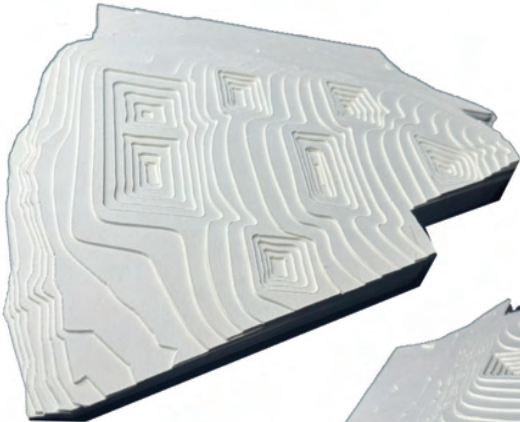


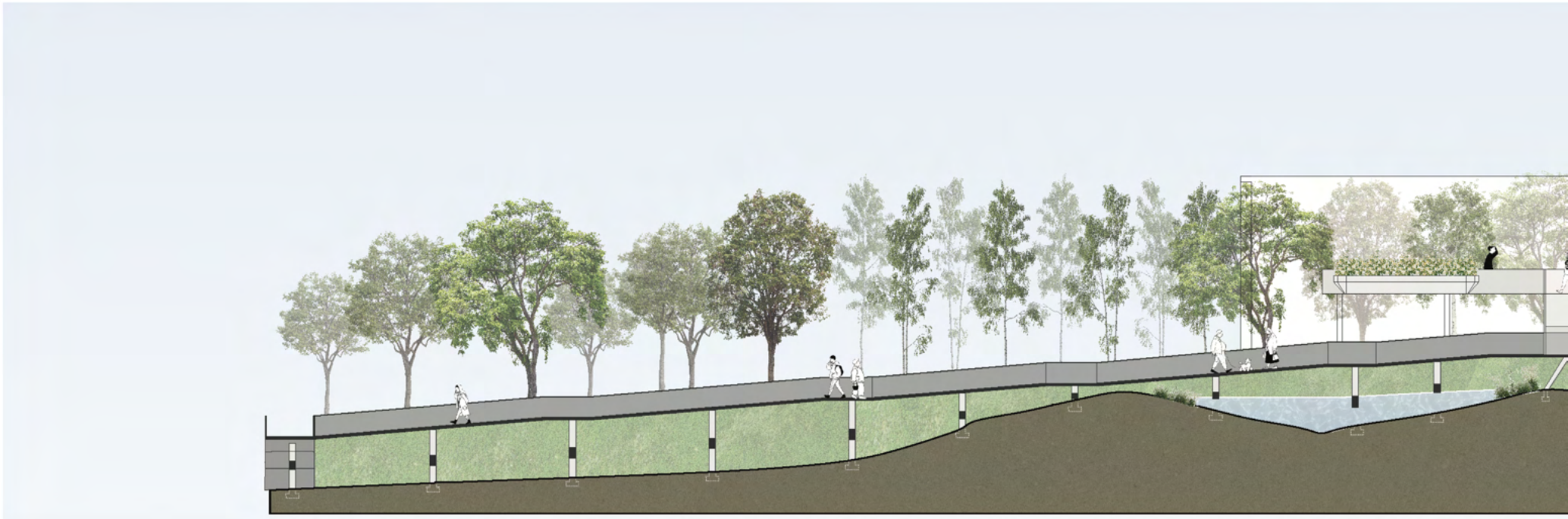
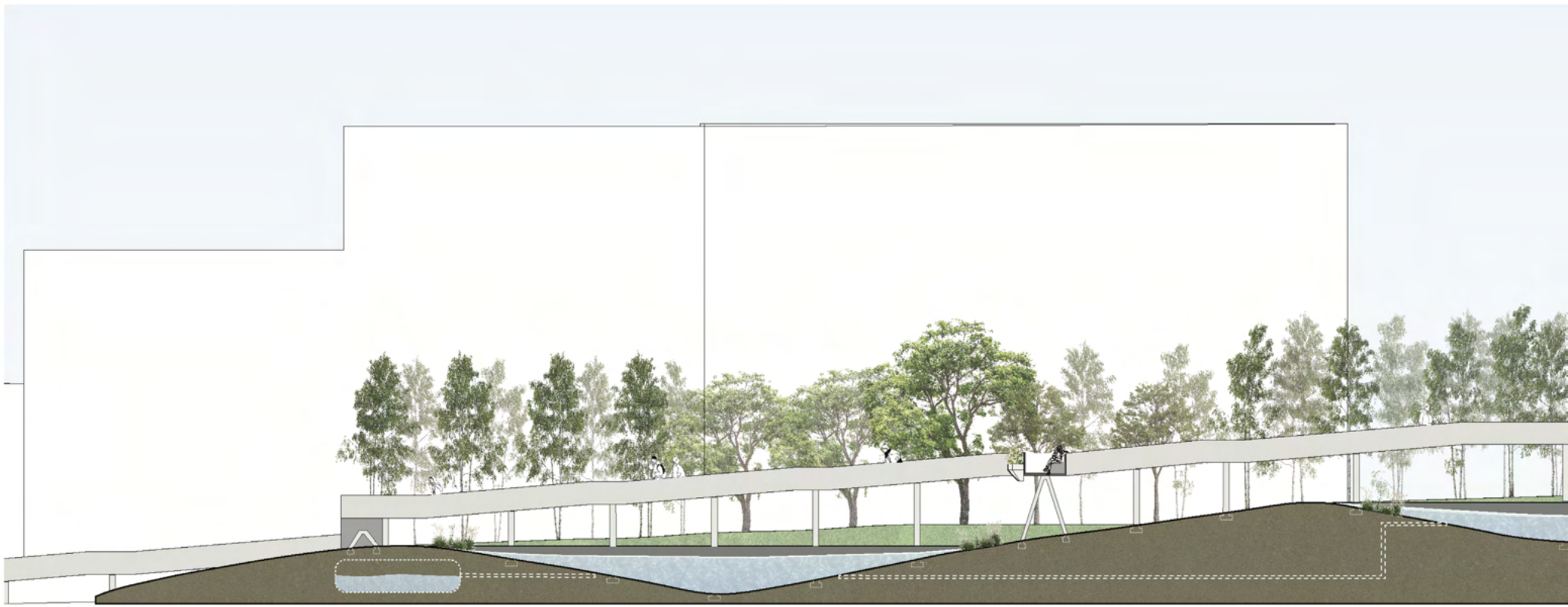
Initial Grading Study

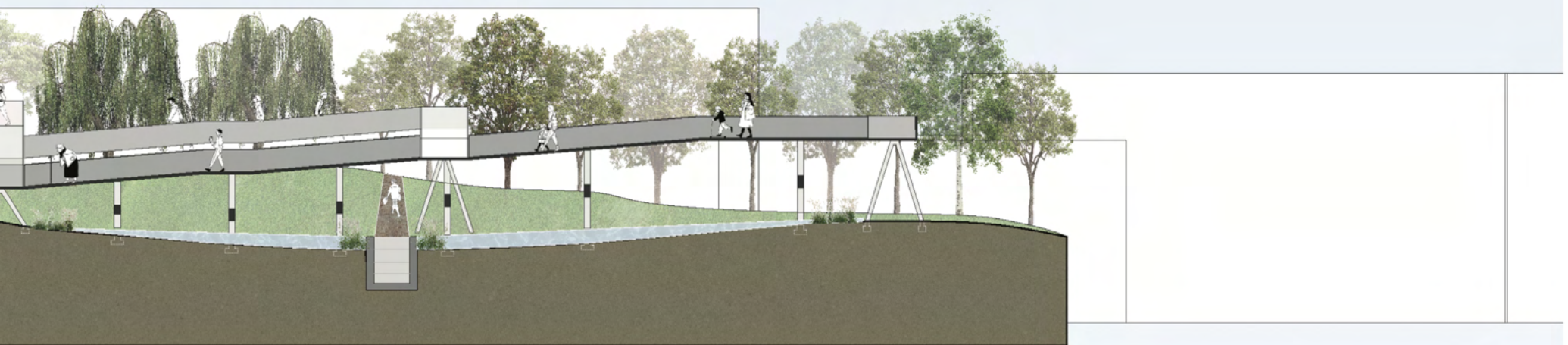
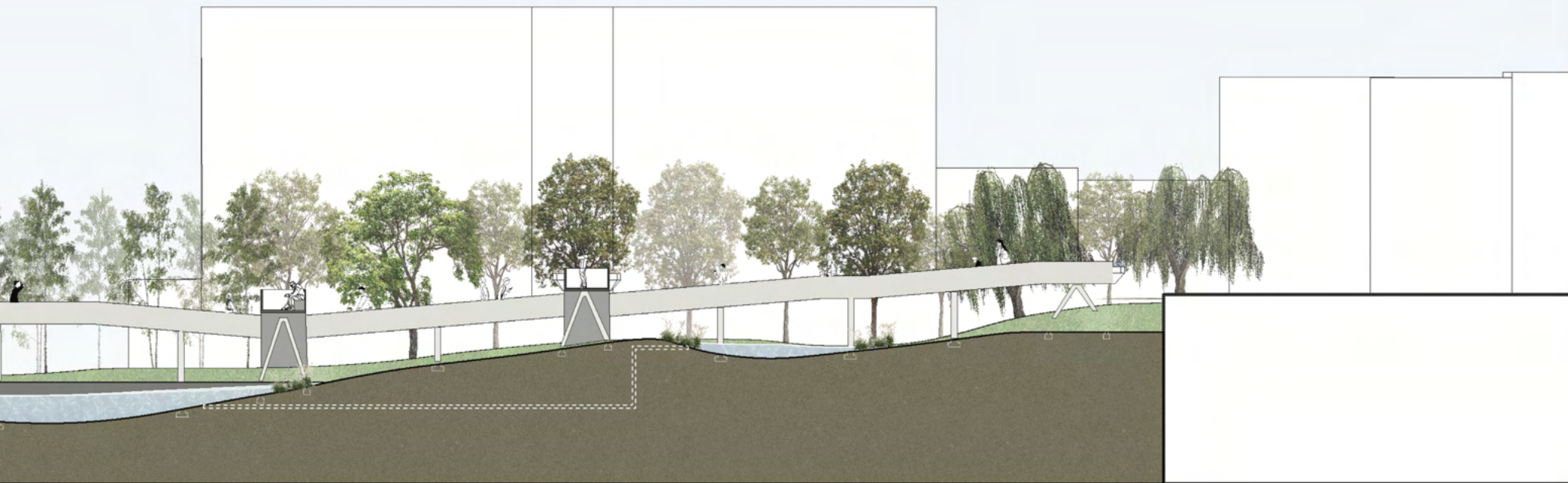
Constructed Wetland Typical Section

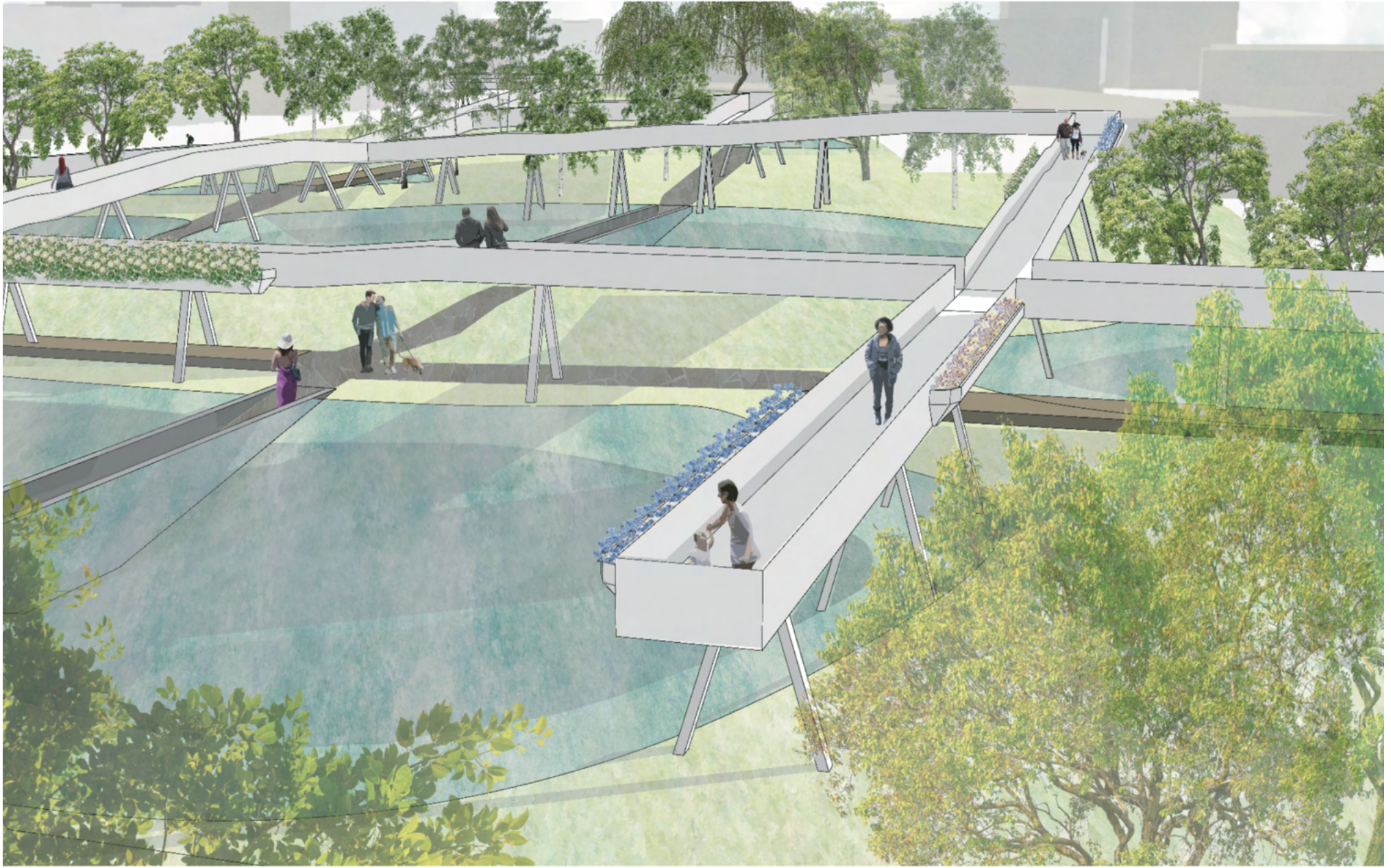


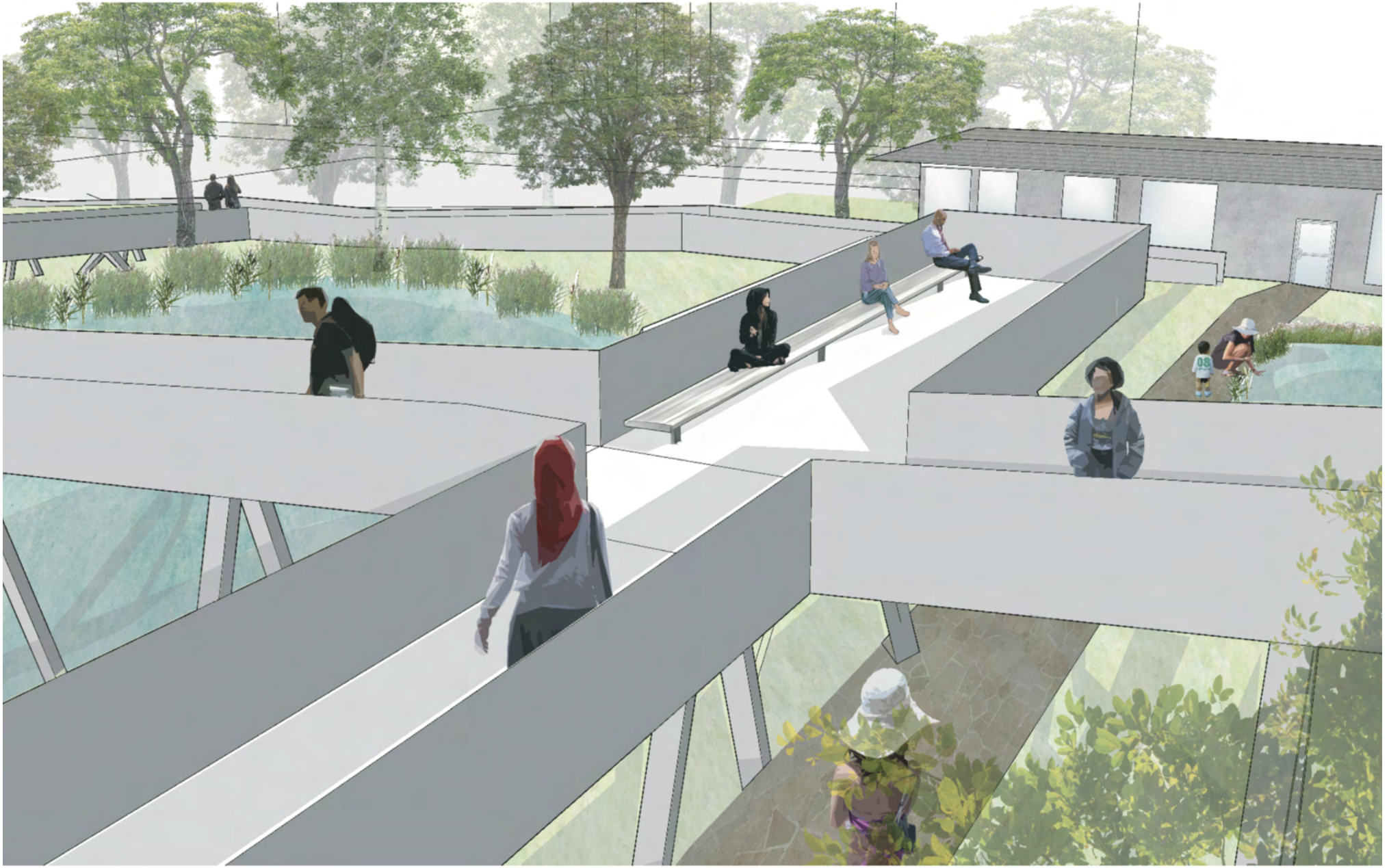
- 1. Impermeable Liner
- 2. Protective Soil Layer
- 3. Planting Media
- 4. Wetlands Vegetation
- 5. Water Extraction Pipe





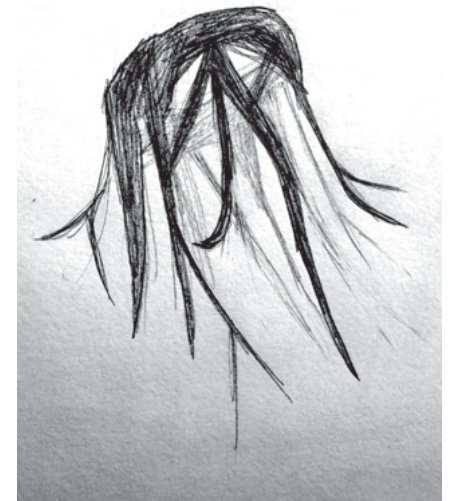
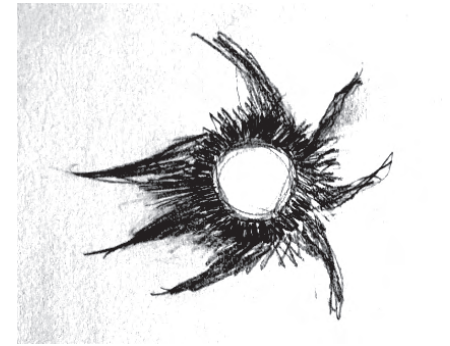






The Meadowlands: A Potential Oasis

Spring 2024 / Fourth Year
Critic: Cathryn Dwyre



This project is located in Secaucus, in the New Jersey Meadowlands. The Meadowlands is shaped by the absence of conventional features, making it a canvas for interpretation and reinvention. Once an Atlantic White Cedar Swamp, this area has undergone centuries of ecological transformation, now seen as a "wasteland" while still retaining hidden potential.

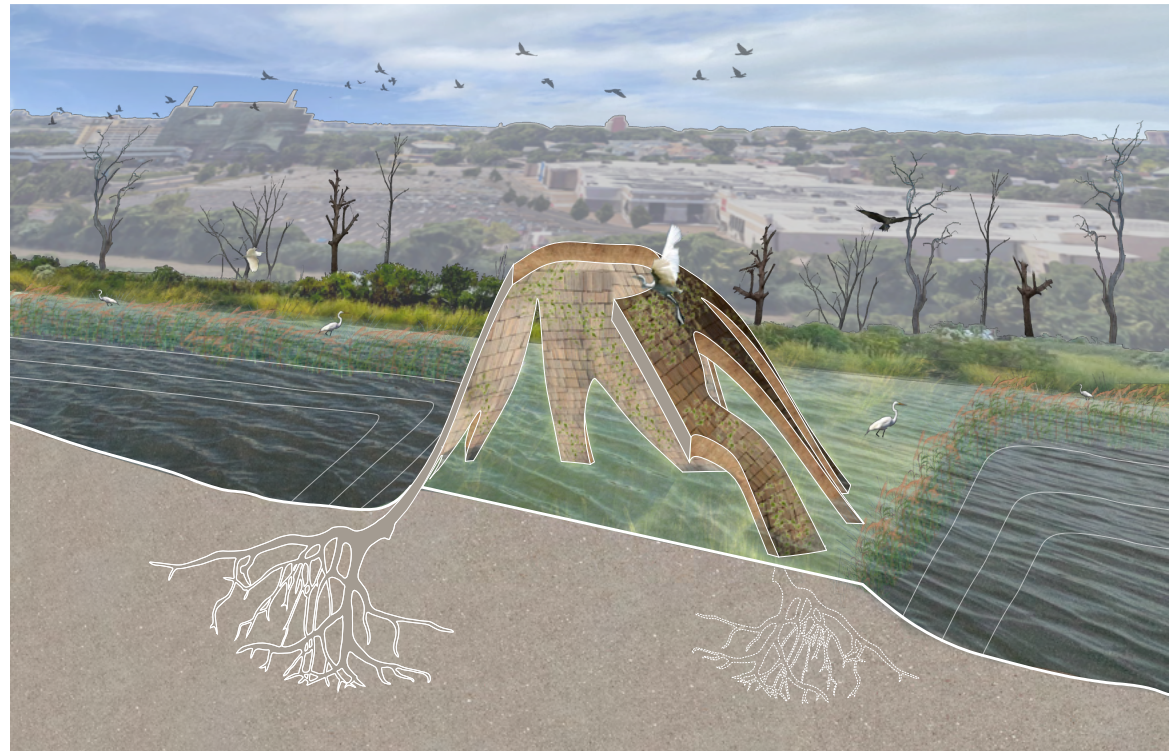
Irreversible changes due to industrialization highlight both the degradation and the infrastructure that have shaped the Meadowlands into its current state. This project explores the site's history to reveal how it can evolve into a thriving oasis. By reimagining the Meadowlands, there is an aim to uncover its potential through the lens of its early ecosystem as a White Cedar Swamp juxtaposed with its present-day condition.



By acknowledging the irreversible changes and understanding the historical significance of the Meadowlands, this project seeks to navigate the complexities of ecological restoration. In doing so, it envisions a future where the landscape can thrive once again.

The pavilion design reflects this transformation from cedar swamps to an industrial wasteland. Inspired by the remnants of Atlantic White Cedars that still emerge from the mudflats along the Mill Creek Marsh Trail during low tide, the pavilion is inspired by biomimicry, symbolizing the ecosystem's resilience and potential for renewal.

Constructed from reclaimed timber, the pavilion mimics the bark and roots of the original cedars, merging architecture with the ecological narrative of the site. As the tides rise and fall, the pavilion is alternately submerged and revealed, echoing the cyclical nature of the Meadowlands' transformation.



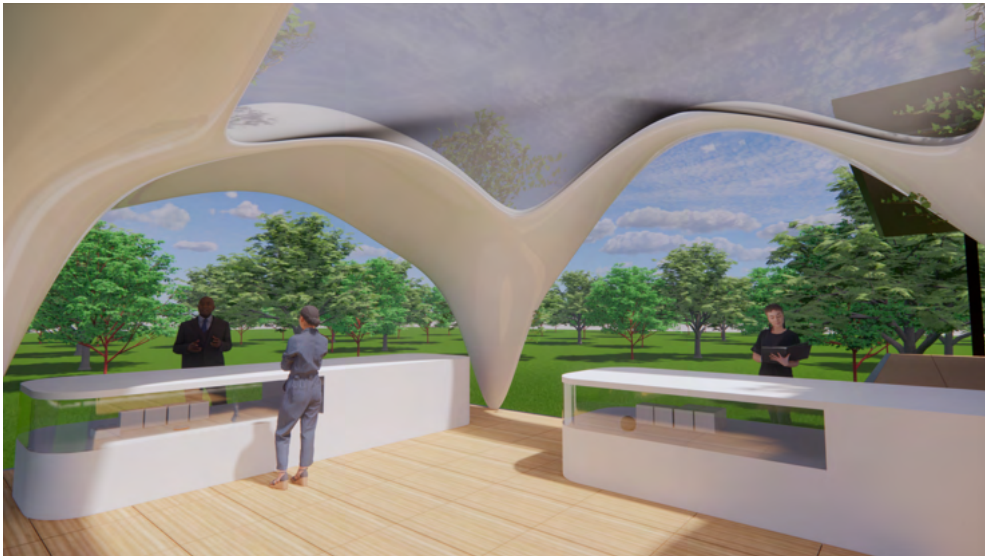
Rebrand: phafil

Fall 2021 / Second Year

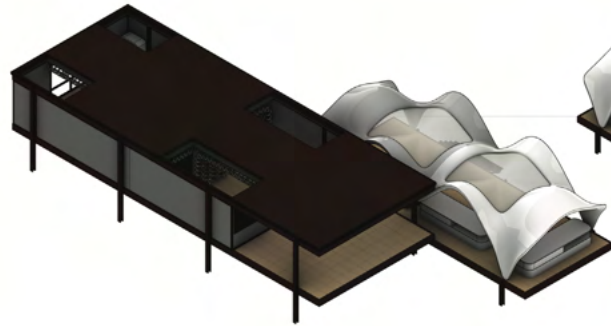
Partner: Emily Giang

Critic: David Mans

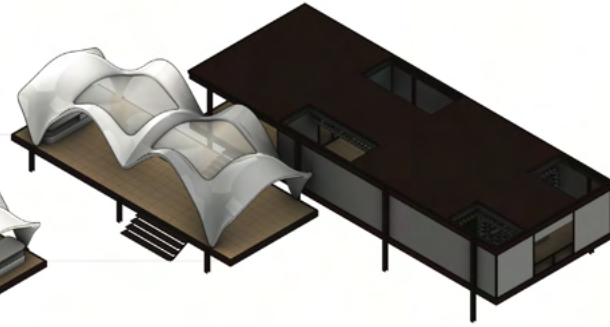
This is a brand merger project where we combined the prices and convenience of Amazon with the care & trustworthiness of CVS. The design was to create interior and exterior kiosks for a shop location at the Farnsworth House. There are two distinct canopy shapes; the outer fluid canopies invite and envelope customers into the outer patio, which serves as a tech sales floor. They also have weatherproof covers at the tops of the canopies which still allow light in. These interior canopies, which use a chain-link mesh design, line parts of the ceiling and snake down the walls. They serve as a guide through the interior, which has product showcases and a pharmacy at the back of the house.



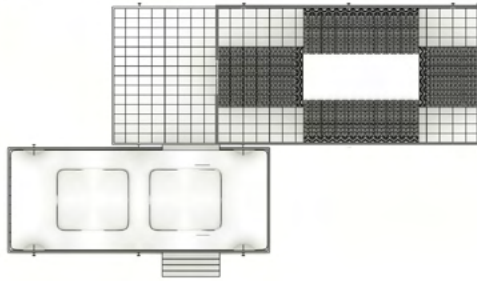
northeast isometric



southeast isometric



plan



program



sections

