





GENERAL NOTES

BUILDING A	GROSS: 22,050 SF FOOTPRINT: 7,350 SF
BUILDING B	GROSS: 47,882 SF FOOTPRINT: 15,588 SF
BUILDING C	GROSS: 2,766 SF FOOTPRINT: 2,766 SF
BUILDING D	GROSS: 25,487 SF FOOTPRINT: 8,209 SF
BUILDING E	GROSS: 34,001 SF FOOTPRINT: 11,066 SF
BUILDING F	GROSS: 21,258 SF FOOTPRINT: 6,861 SF

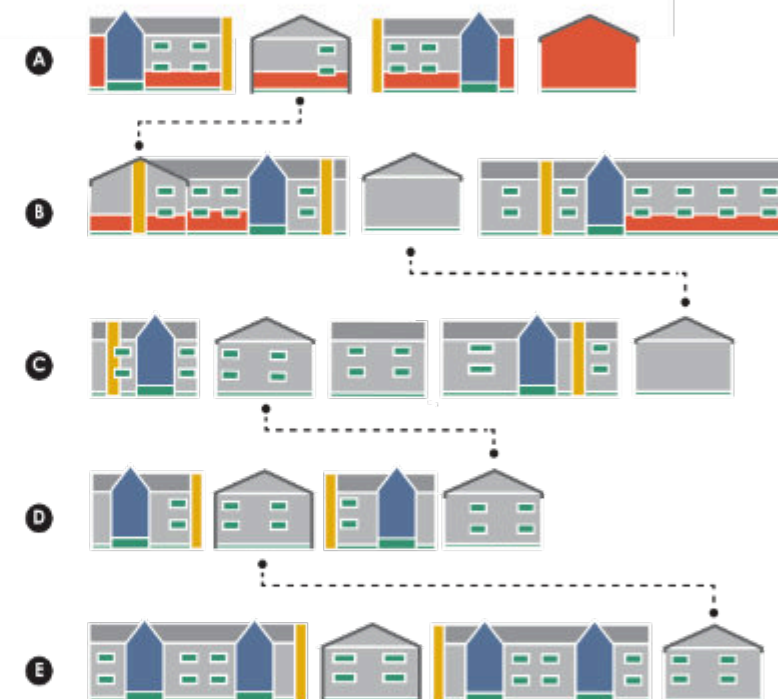
RESIDENTIAL UNITS: 127
PARKING STALLS: 195
TOTAL LANDSCAPING AREA: 50,982 SF

LANDSCAPE FOR PARKING: 500 SF per 24 STALLS

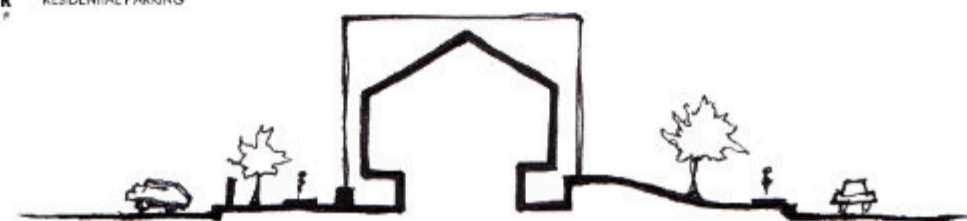
REQUIRED: 4,000 SF
PROVIDED / DEFINED: 1,049 SF
SPREAD: -2,951 SF
(19 stalls worth)

LEGEND

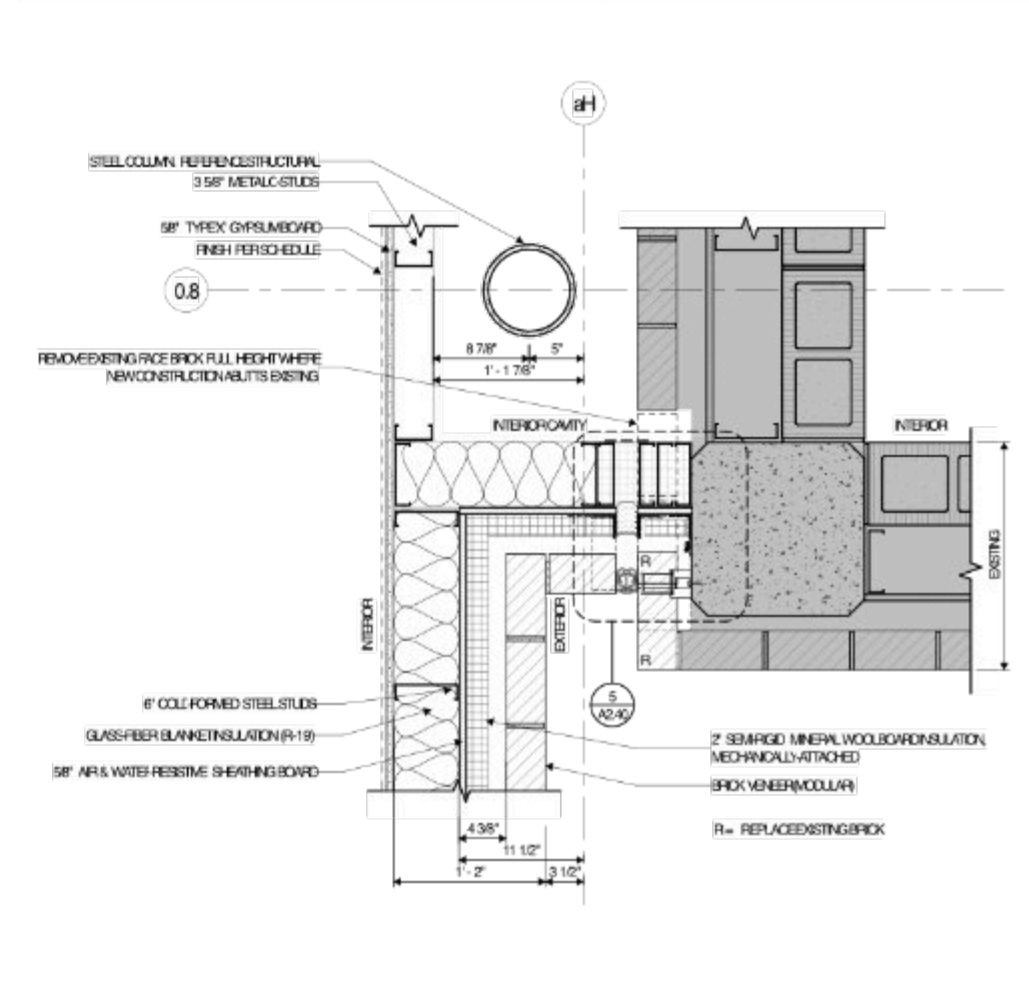
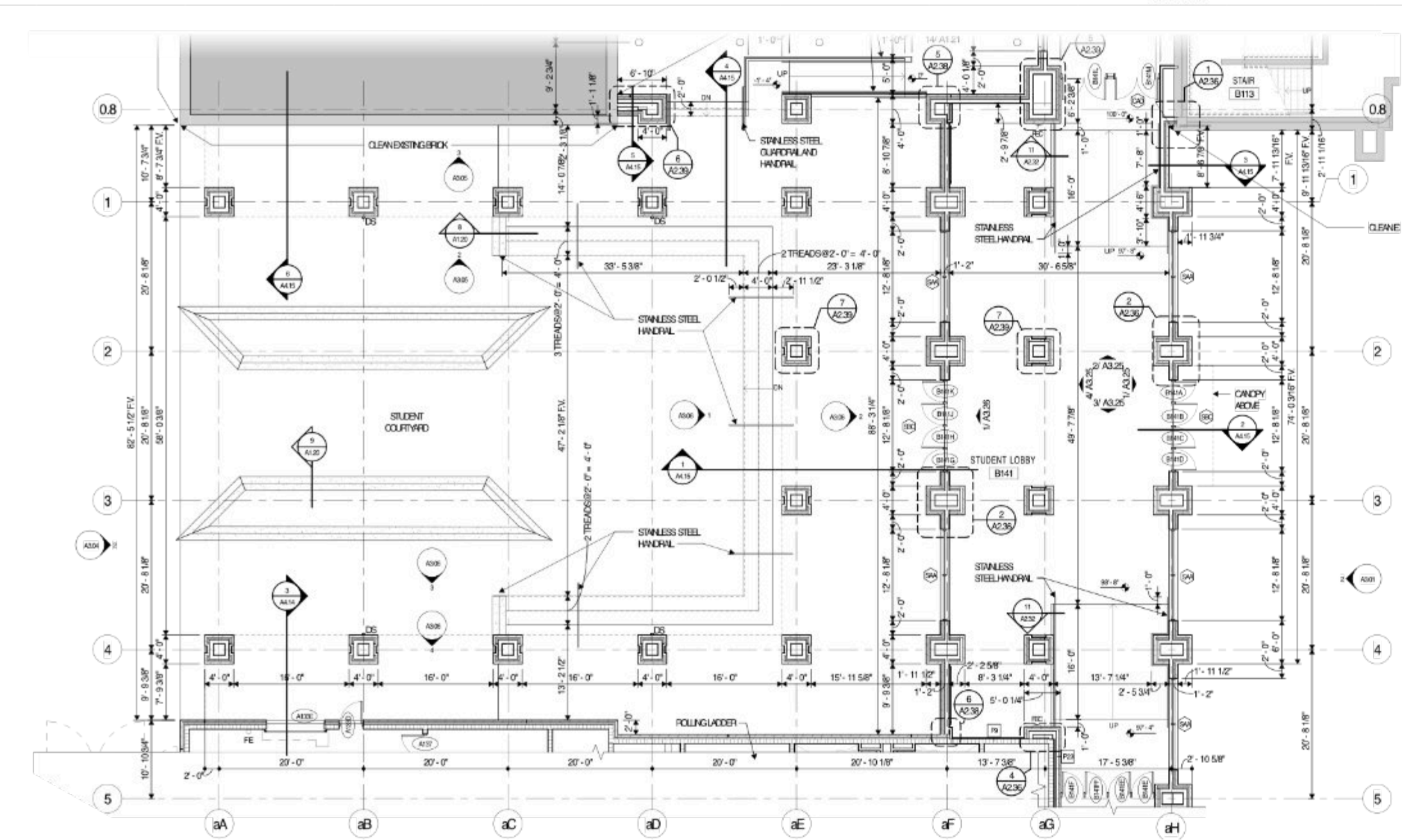
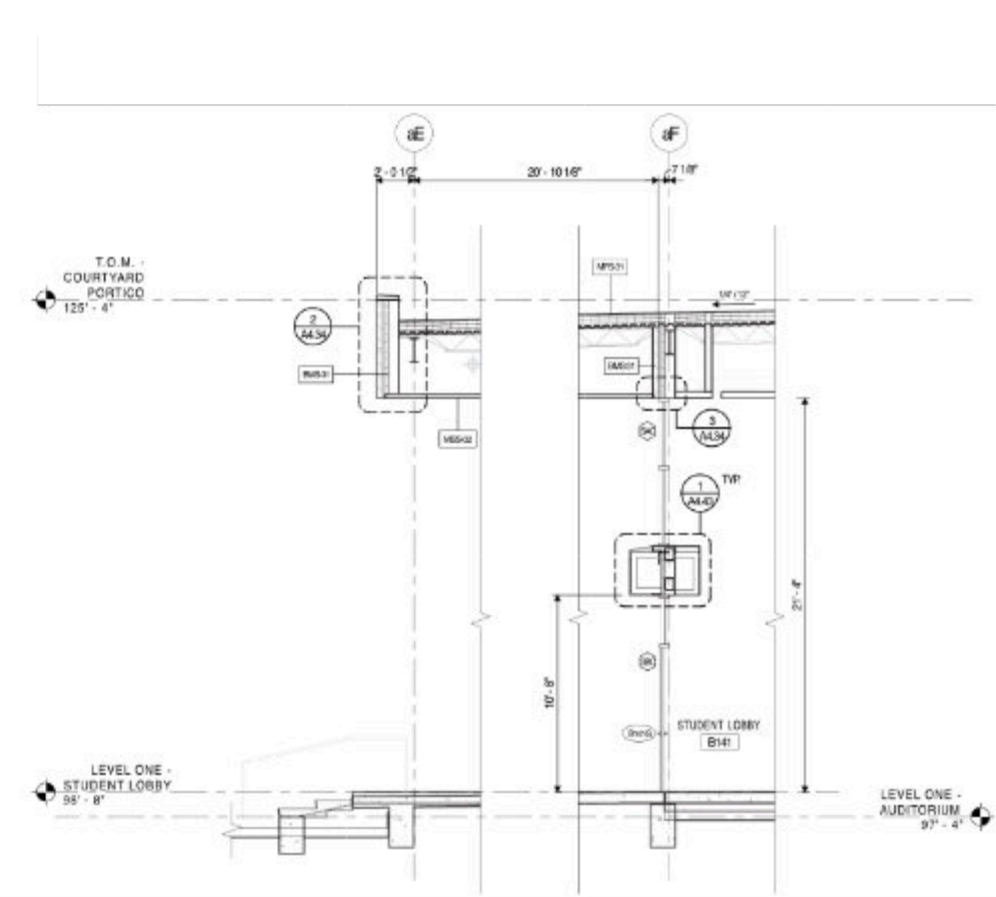
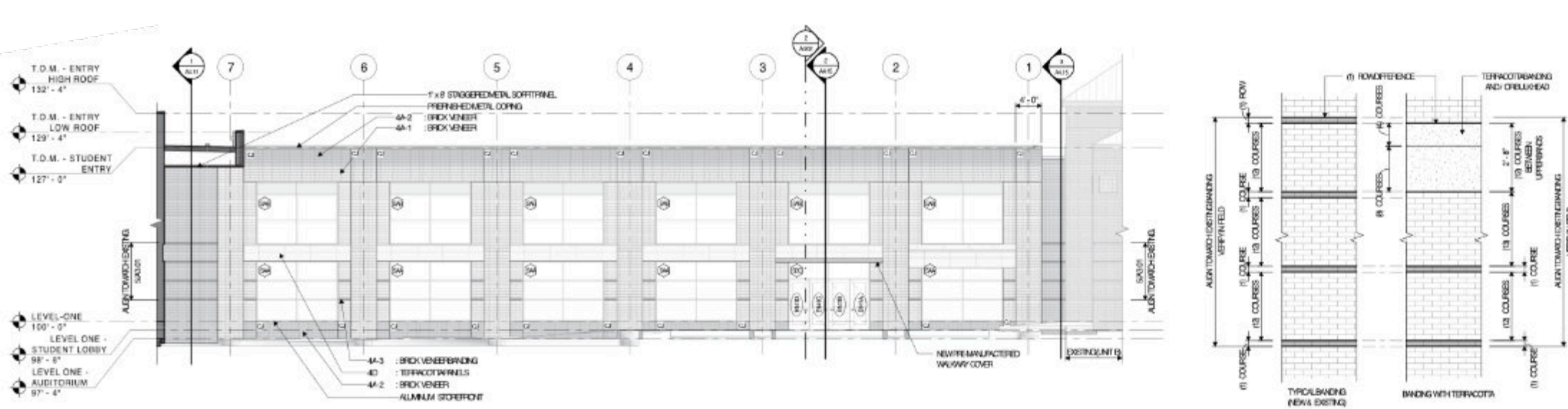
- WATER FEATURE
- LANDSCAPING
- C** COMMERCIAL PARKING
- R** RESIDENTIAL PARKING

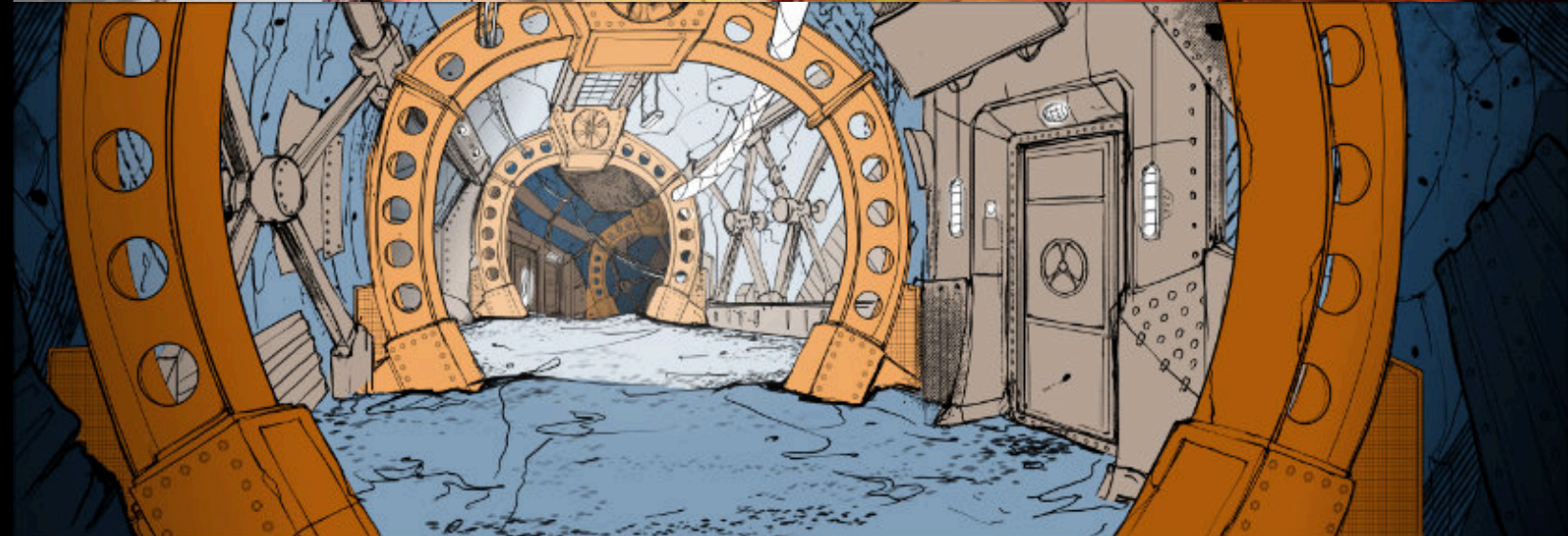
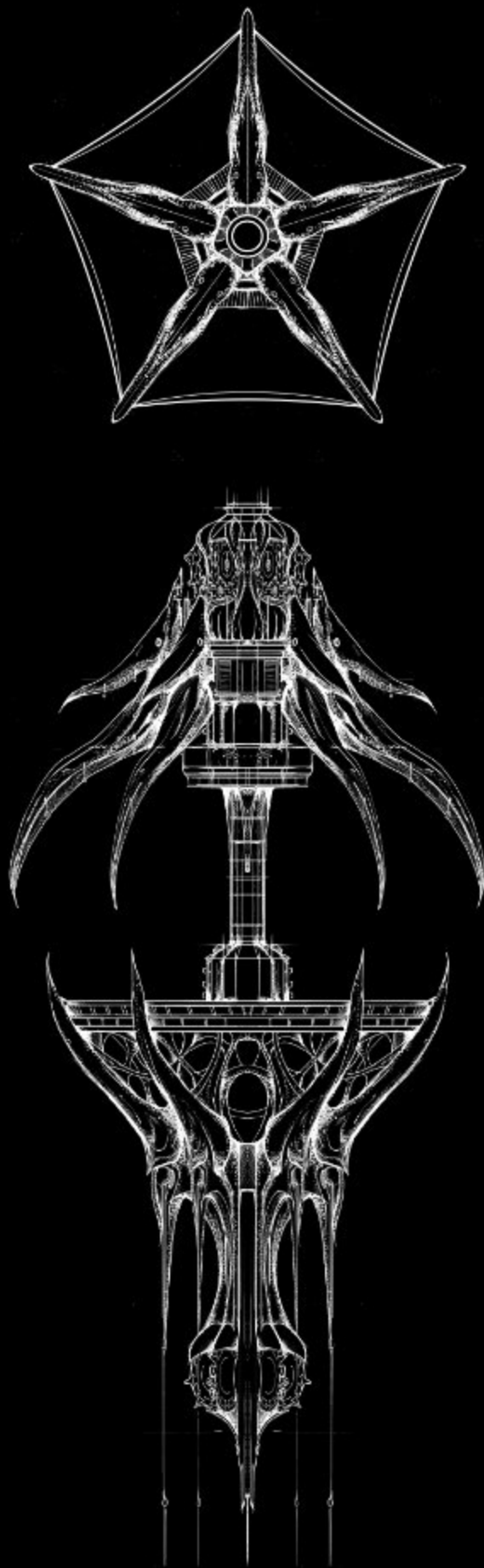
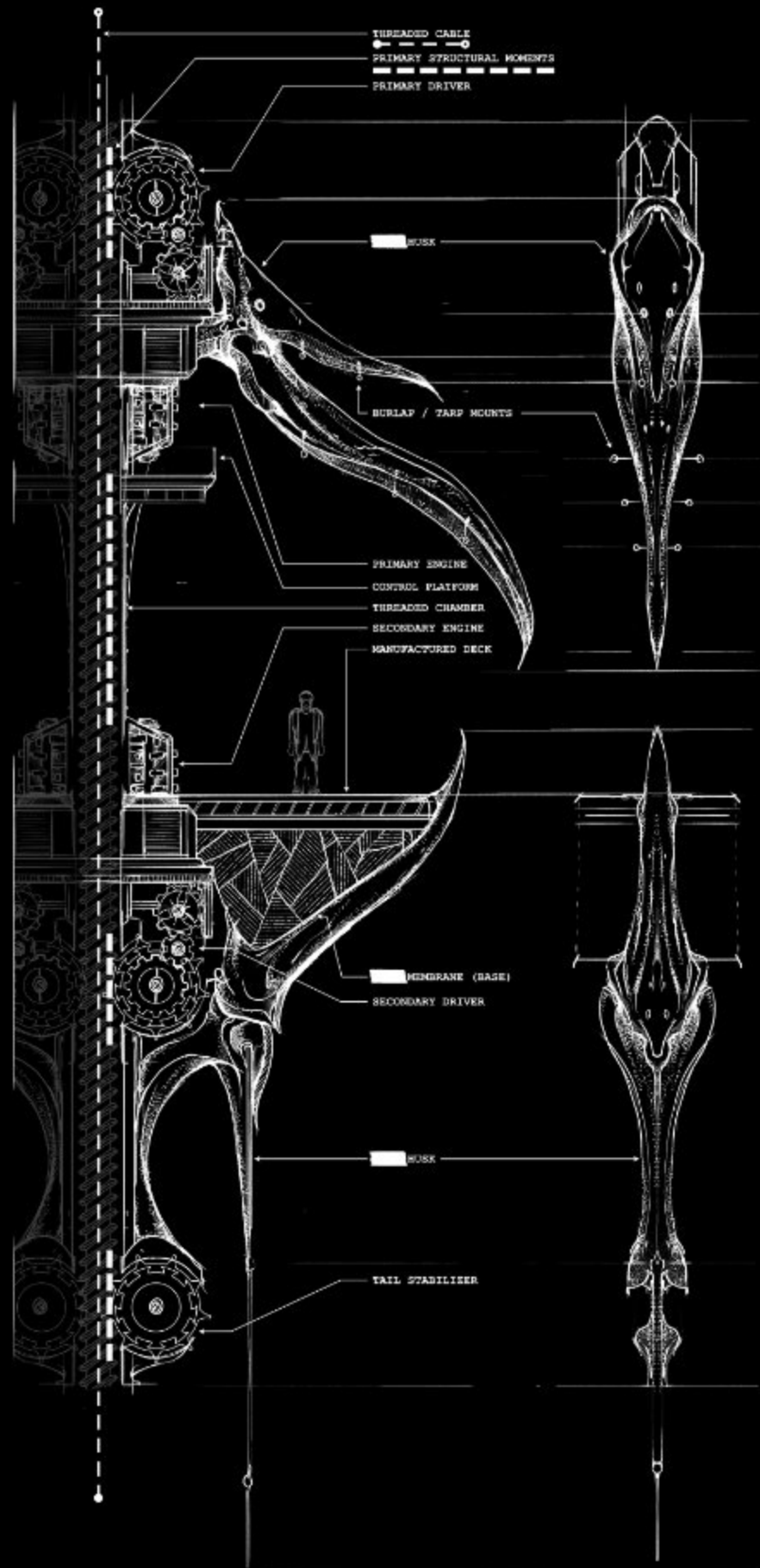


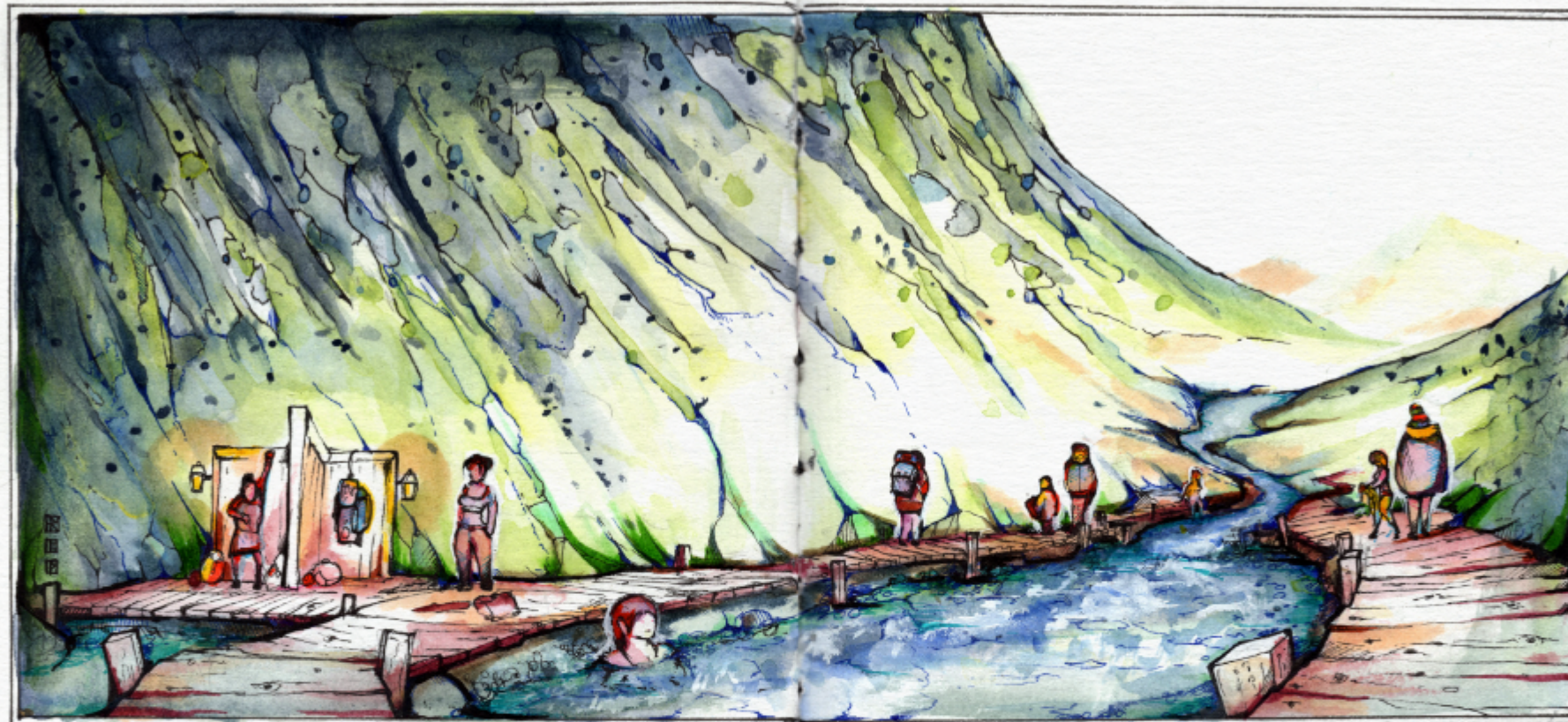
- HARD MATERIAL (BRICK/STONE)
- LANDSCAPING/BALCONIES
- DETAIL STRIPE
- ROOFING
- SIDING
- MASS











64° 02' 53.2" N 21° 13' 20.2" W

Rose Hollow

