

WILLIAM DRAKE ELLSWORTH

SELECTED WORK



33° 47' 23.7" N

118° 08' 32.9" W

CONTENT

01	THE GLADES RDC	04 - 09
02	CAMPUS AT HORTON RDC	10 - 17
03	SCOTTSDALE WELLNESS RDC	18 - 21
04	SANTA MONICA DEVELOPMENT RDC	22 - 25

01

WILLIAM ELLSWORTH

THE GLADES

LOCATION: BOCA RATON, FL, USA
 TYPOLOGY: MIXED-USE
 SIZE: 200,000 SF RETAIL
 300,000 SF OFFICE
 250 RESIDENTIAL UNITS
 150 HOSPITALITY KEYS
 YEAR: 2021-2025
 OFFICE: RDC





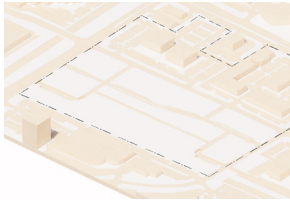
DESCRIPTION

This luxury mixed-use project in the affluent South Florida city of Boca Raton invites visitors to a natural overgrown development which subverts the typical retail podium to a lush botanical garden. The development includes multiple typologies which combine to create a development which is desperately missing from the existing market. Boutique hotel, luxury apparel, extensive best-in-class food and beverage offerings in addition to executive offices, heavily amenitized residential as well as a members-only rooftop club for residents, office tenants and hotel guests.

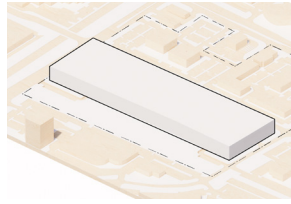
The design centers on a lush series of gardens with cascading patios, multiple water features and generous open space. Our process of story telling and form making was instrumental in the development of this project by creating a strong design concept, in-depth avatars, avatar journeys, models, and professional renders.

ROLE

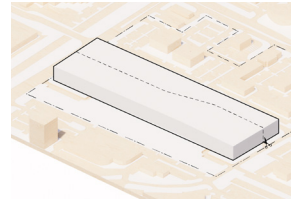
- Lead 5 person design team
- Organized client design meetings
- Developed a story driven design narratives which aided in project design and delivery.



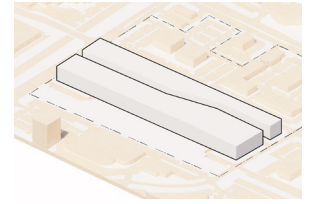
1 Site



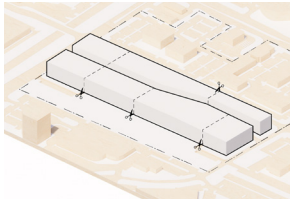
2 FAR Volume



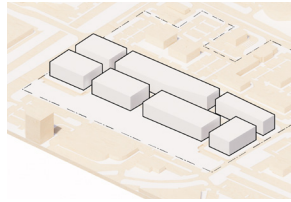
3 Contextual Split



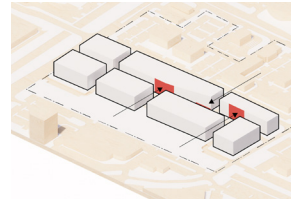
4 Contextual Excavation



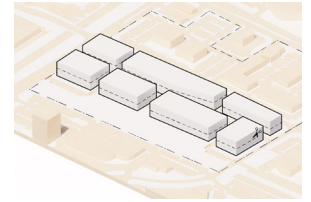
5 Adjacent Connections



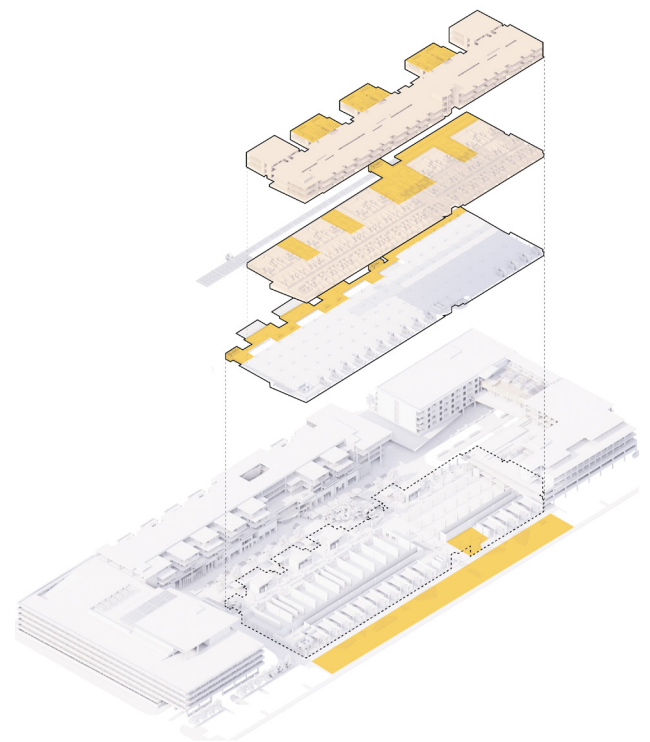
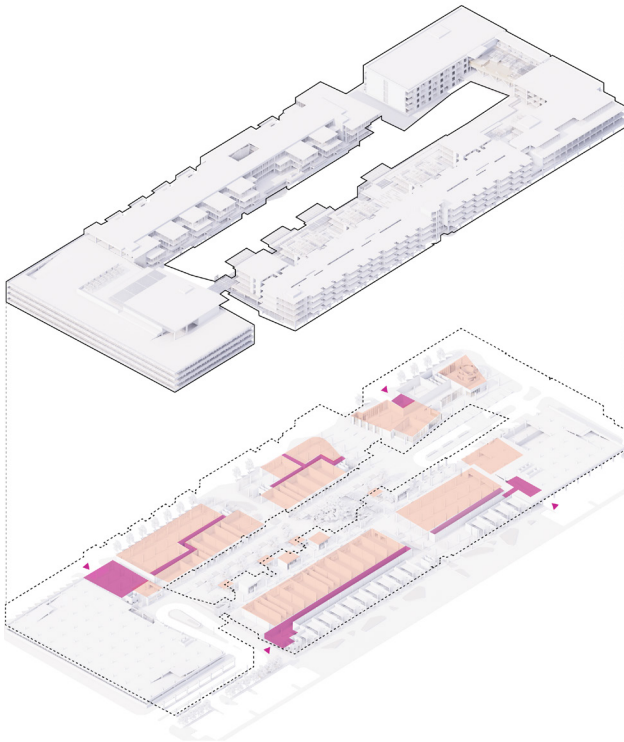
6 Adjacent Excavations



7 Iconic Moments



8 Programmatic Stack



Initial design concepts began as a criticism of the typical car-centric and gated community oriented urban planning of Southern Florida. We wanted to break this typology to create an open and permeable urban block which was heavily inspired by Kintsugi, the Japanese art of repairing broken pottery by mending the areas of breakage with a precious metals such as gold, silver, or platinum.

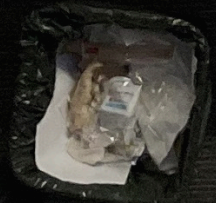
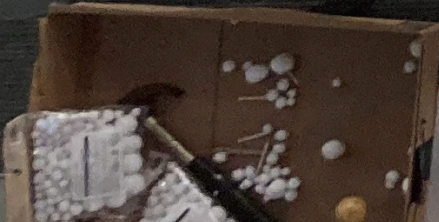
Similarly, the formal excavations are intended to reveal moments of architectural interest which invite visitors to enter the project. These gateways then became our public gestures for discovery within a project spanning botanical garden stretching from one side of the development to the other.



PLACEMENT JCRDC

THE GLADES

Our intention was to create moments of opportunity for pedestrian discovery. With a deep focus on refined materials, lush landscaping, and top-tier hospitality, our goal was to invite patrons to experience elegance in every detail.





PLACEMAKING | RDC

THE GLADES

02

CAMPUS AT HORTON

LOCATION: SAN DIEGO, CA, USA
TYPOLOGY: MIXED-USE ADAPTIVE REUSE
YEAR: 2018-2024
OFFICE: RDC

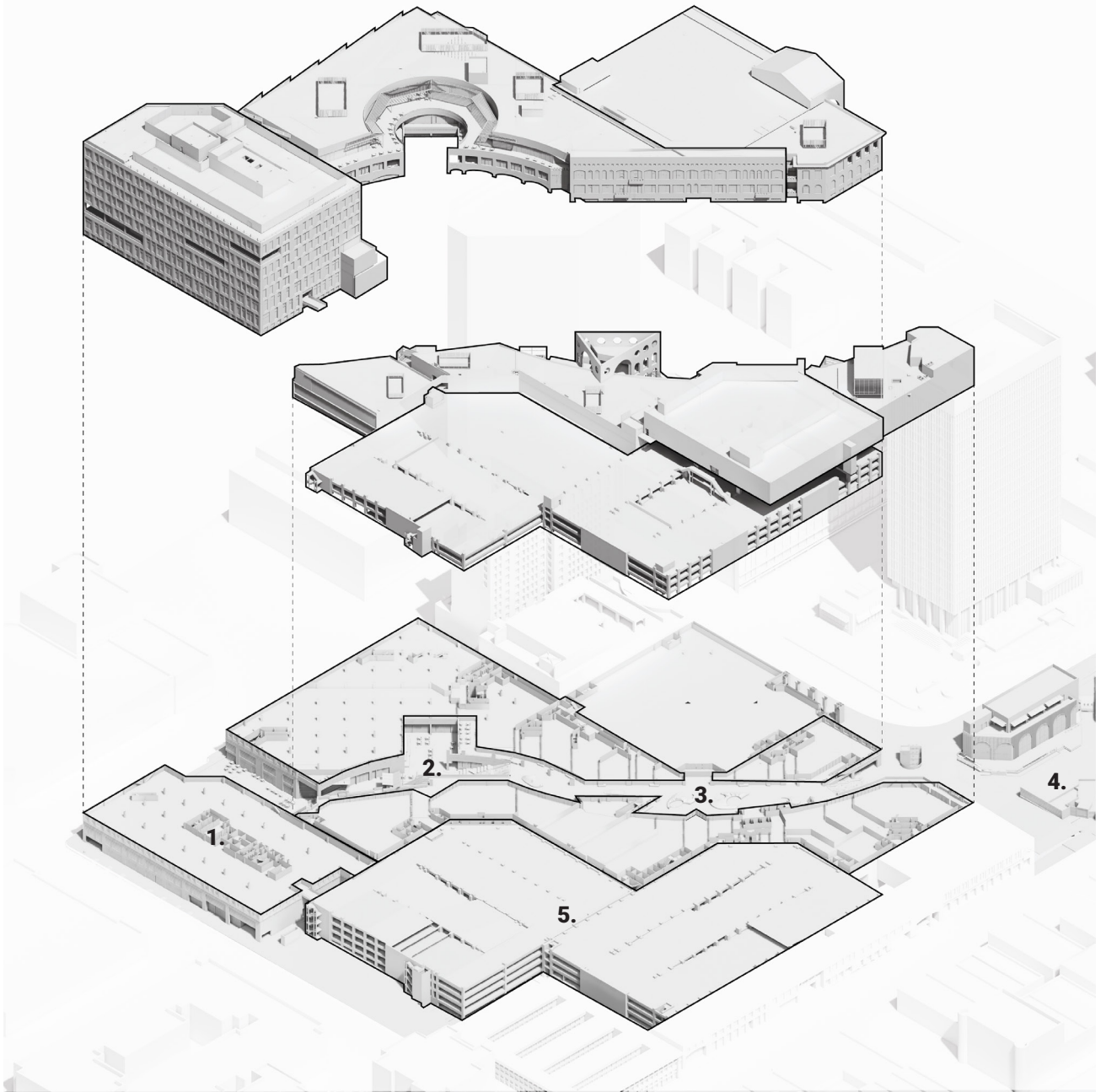
DESCRIPTION

RDC collaborated with RIOS to reinvent Horton Plaza as the ultimate 10-block mixed re-use campus; a sustainable, high-tech hub in the heart of Downtown San Diego. Campus at Horton will be the epitome of a modern office-complete with retail, food and beverage outlets, public park space, theaters and more.

ROLE

- Construction Documentation of facade panels.
- Digital fabrication lead.
- Conceptual diagramming lead.





Exploded Axonometric

Campus at Horton will provide a diverse and dynamic mix of food, shopping, entertainment, health and wellness options, as well as unique cultural venues and programming. The campus will offer the city's largest and most convenient on-site parking, covered spaces, and valet services for office and retail employees and guests.

- 1. Building A
- 2. Courtyard Canyon
- 3. Raised Promenade
- 4. Public Park
- 5. Parking

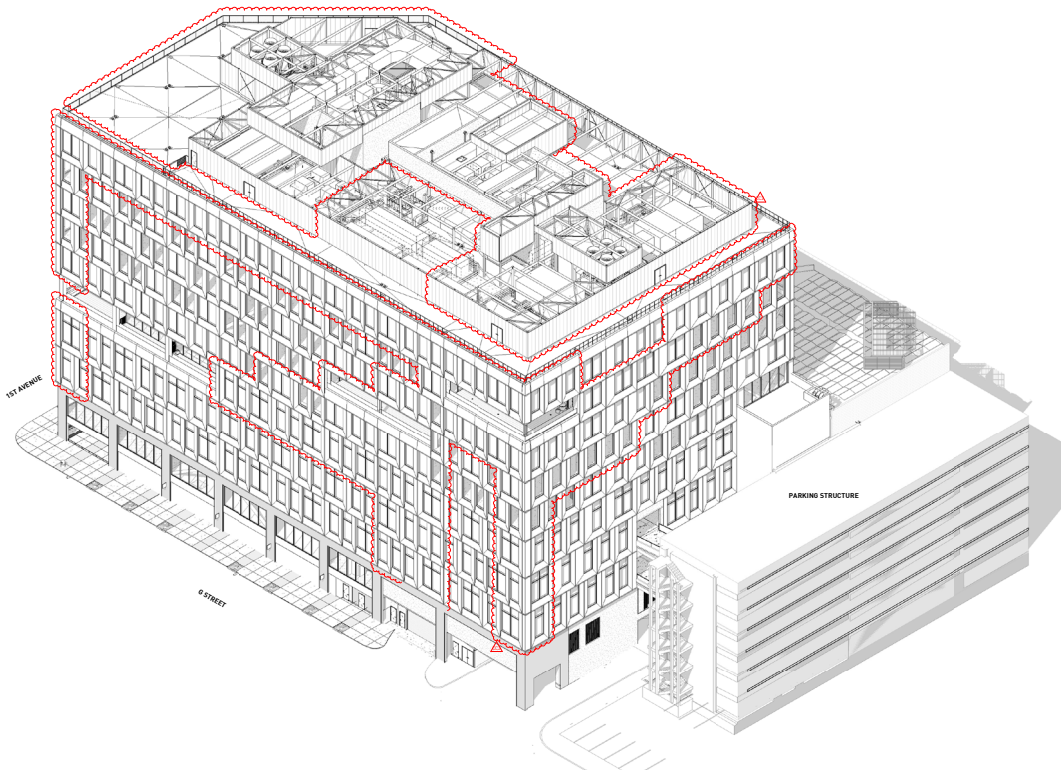
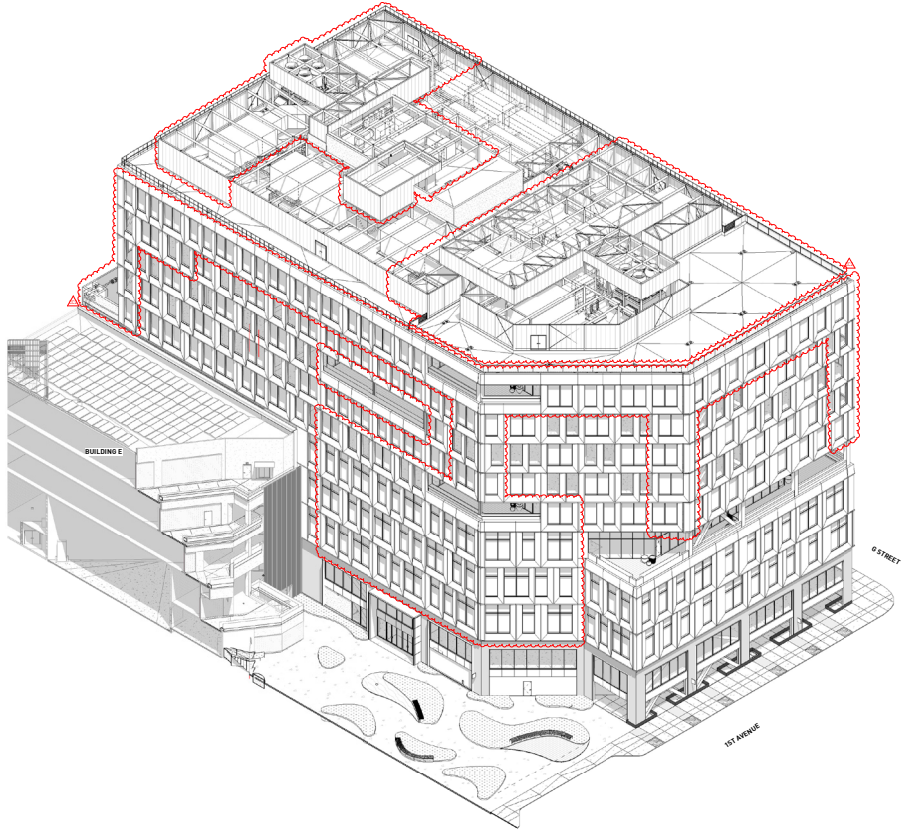


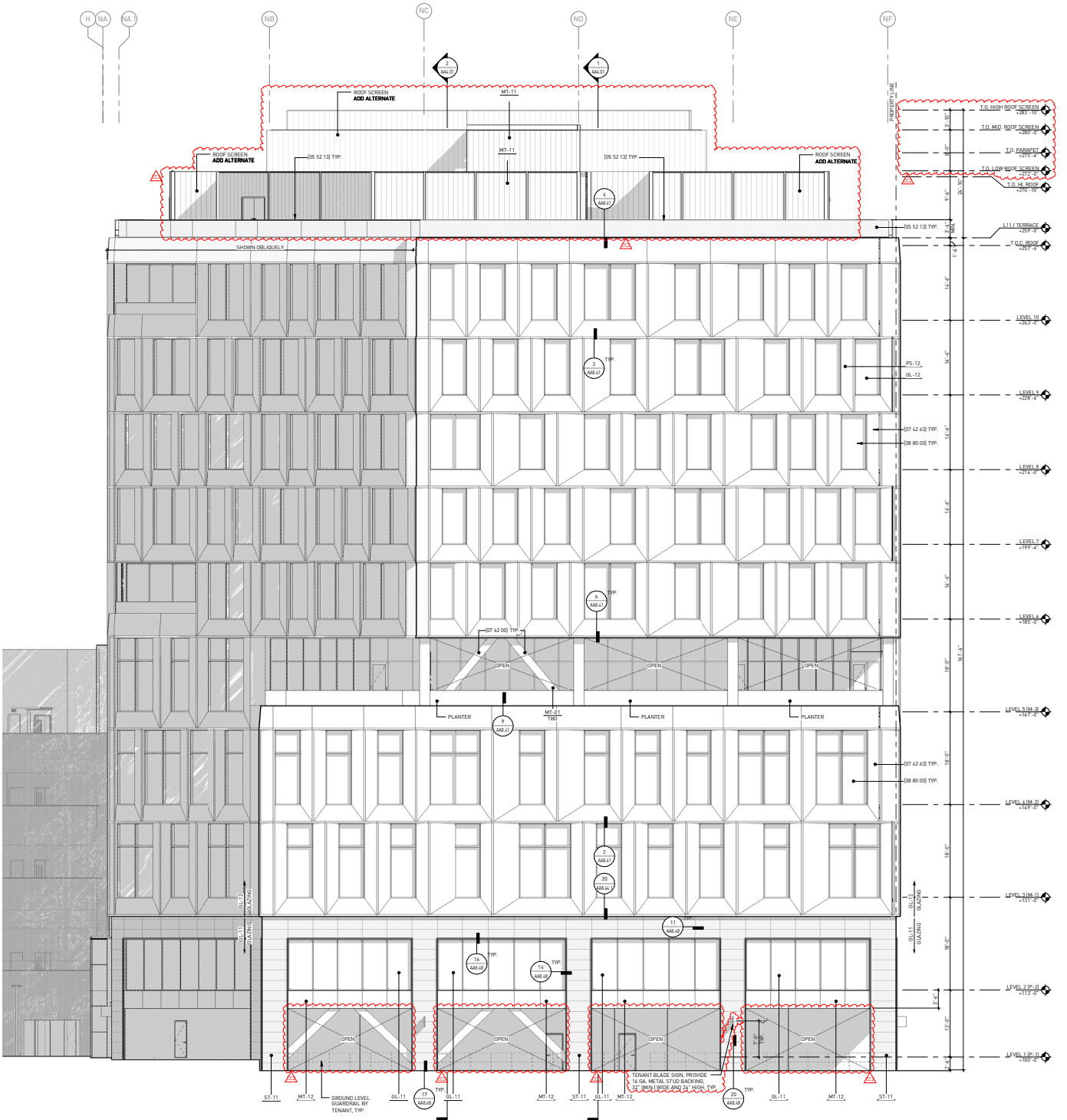
R+D Biolab

P-4

FARM FRESH

PLACEMAKING | RDC
CAMPUS AT FORTON



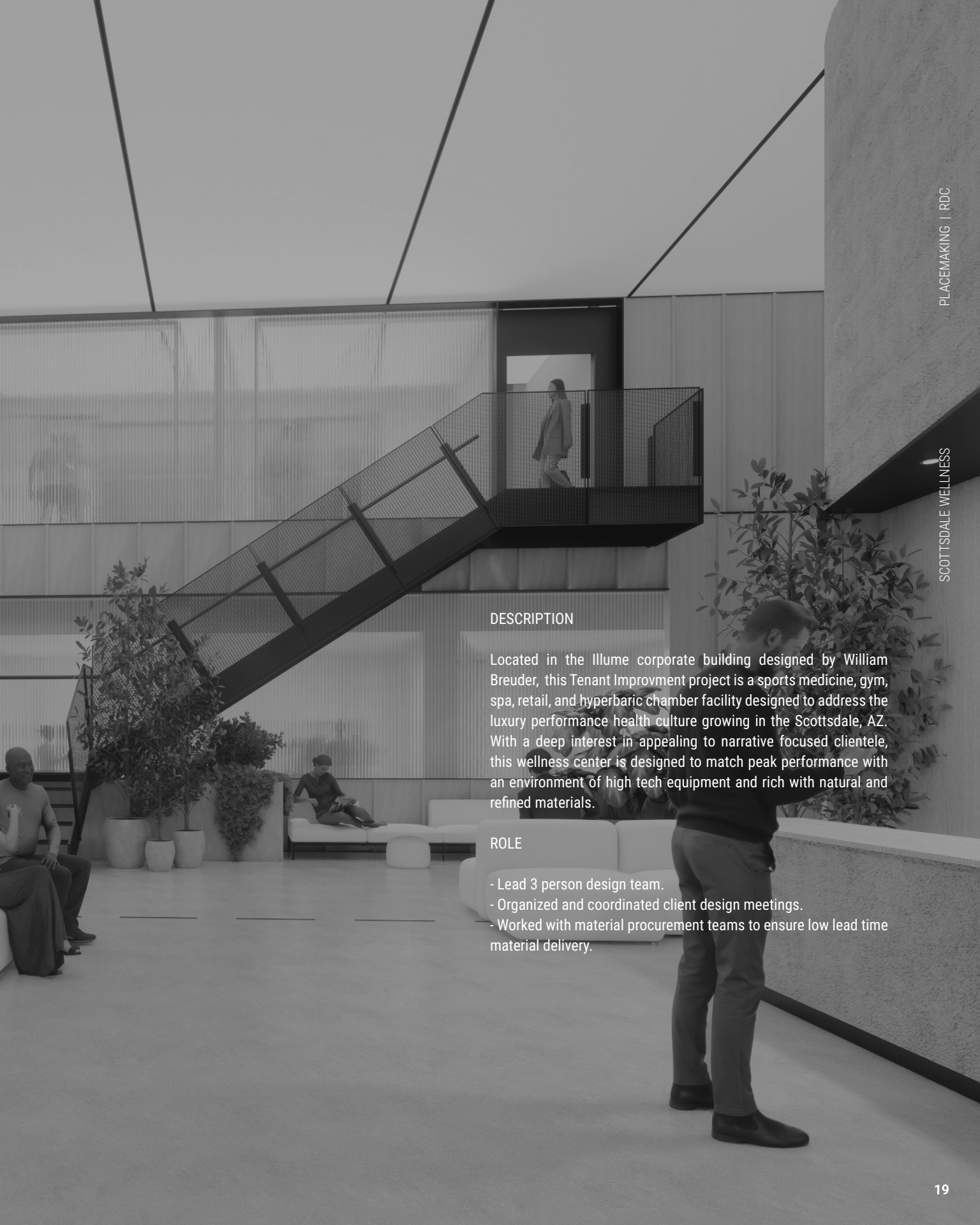


03

SCOTTSDALE WELLNESS

LOCATION: SCOTTSDALE, AZ, USA
TYPOLOGY: TENANT IMPROVEMENT
SIZE: 60,000 SF SPORTS MEDICINE, GYM, SPA, RETAIL, HYPERBARIC CHAMBERS
YEAR: 2024-2025
OFFICE: RDC






DESCRIPTION

Located in the Illume corporate building designed by William Breuder, this Tenant Improvement project is a sports medicine, gym, spa, retail, and hyperbaric chamber facility designed to address the luxury performance health culture growing in the Scottsdale, AZ. With a deep interest in appealing to narrative focused clientele, this wellness center is designed to match peak performance with an environment of high tech equipment and rich with natural and refined materials.

ROLE

- Lead 3 person design team.
- Organized and coordinated client design meetings.
- Worked with material procurement teams to ensure low lead time material delivery.



The project narrative is conceived as a space for light to play between two materials; concrete and white oak. Concrete was chosen as a material which can stand the test of time and evoke emotions of strength and permanence. White oak was chosen because of its purity and growth potential. The entire space is lit from a membrane diffusing light system which removes shadows and glare from the central circulation space.



MED.

04

SANTA MONICA DEVELOPMENT

LOCATION: SAN DIEGO, CA, USA
TYPOLOGY: RETAIL ADAPTIVE REUSE
YEAR: 2018-2019
OFFICE: RDC

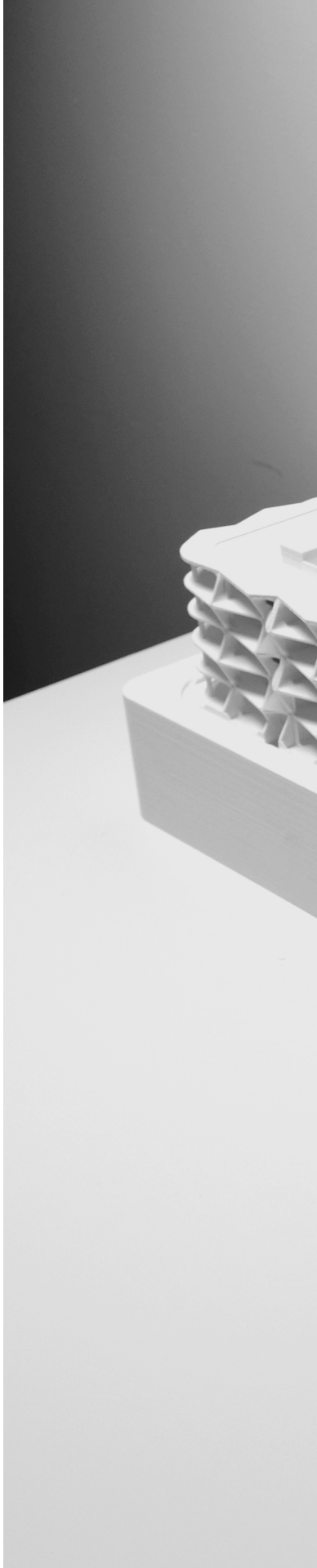
DESCRIPTION

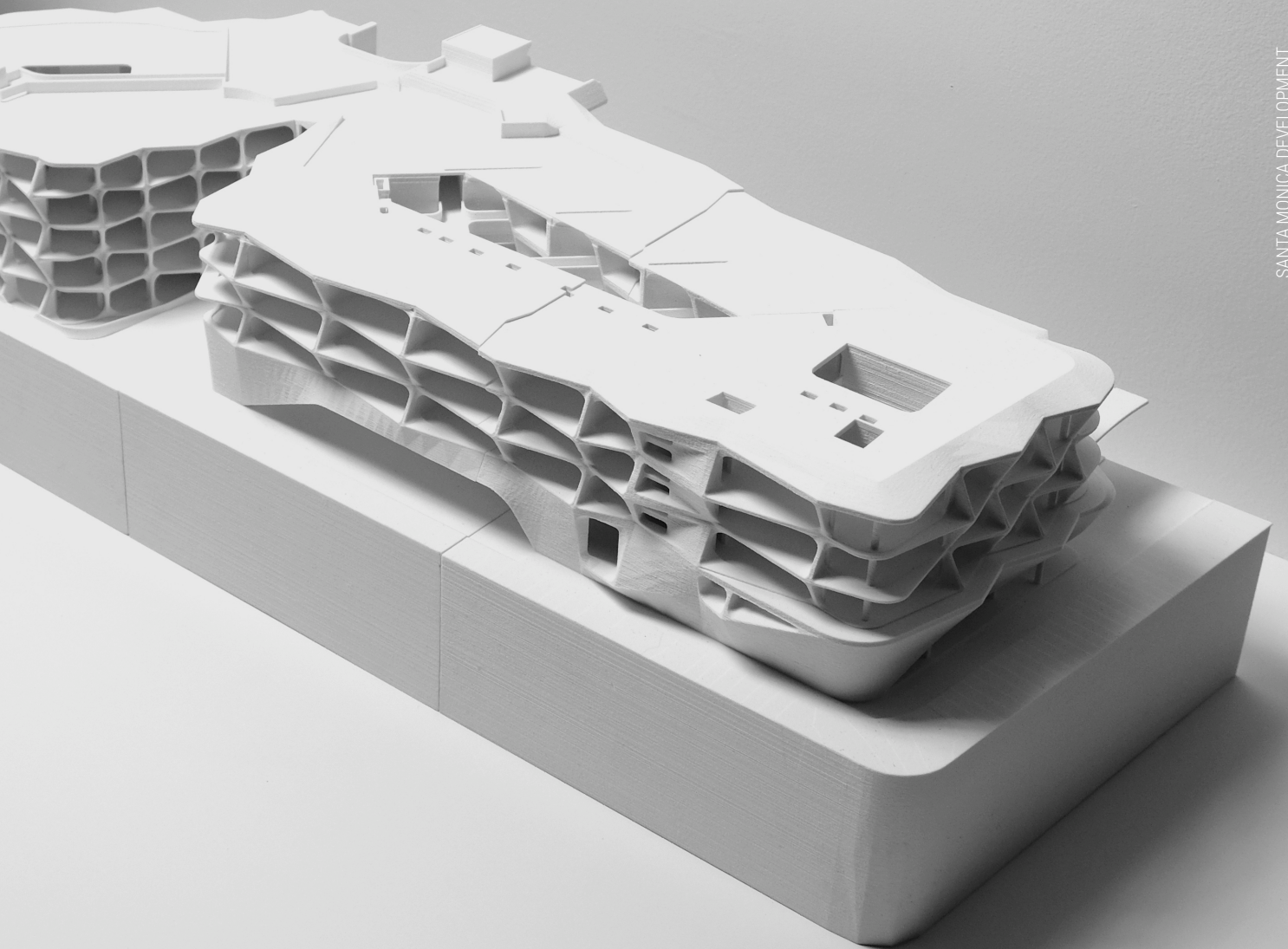
Our group was approached to support in the design review of a confidential development in Santa Monica. We developed a concrete form which accentuated the floor plates and demising walls to create an undulating panel. This system can either be cast in place or be installed using a GFRC prefabricated panel system which can be installed in the field.

ROLE

- Lead facade panel designer.
- Developed custom grasshopper script.
- Coordinated renderings.
- Digital fabrication lead.







LET'S CONNECT

WILLIAMELLSWORTH.COM

