

PORTFOLIO

Anson Choi | 2021-2025

Wing Hay Anson Choi | Interior Designer

About Me

I am an interior designer who is committed to creating spaces where they can connect communities and make them feel comfortable. Growing up in a place with a strong community and sense of belonging has shaped my ability to create spaces where aims to help with the community hence to the world.

Software:

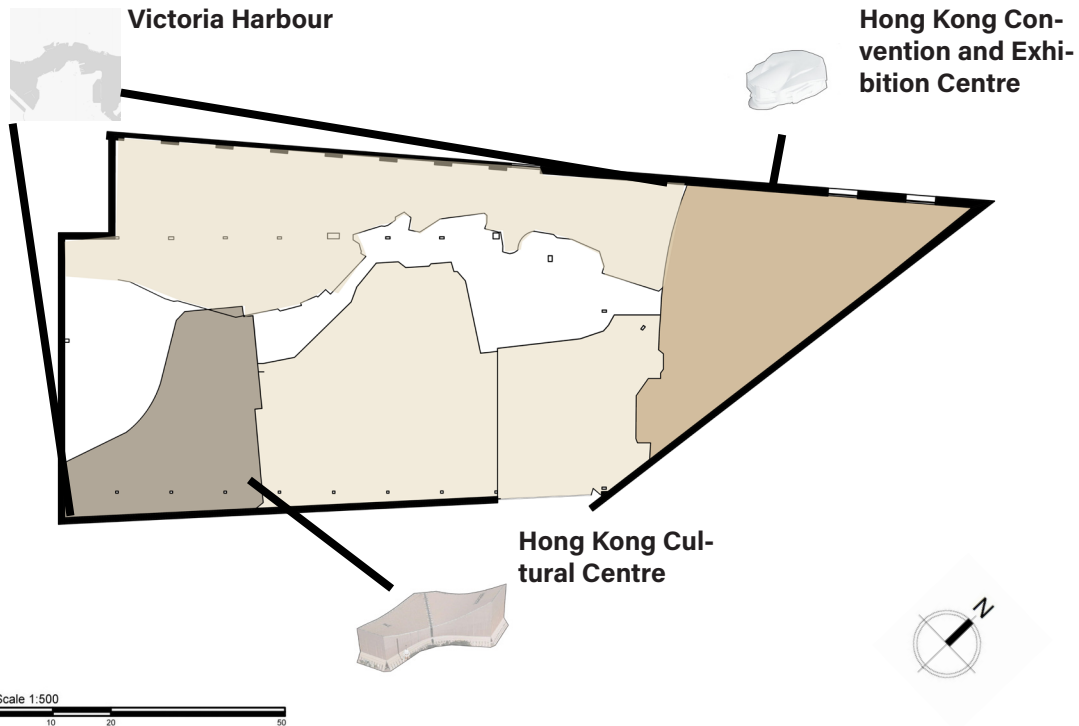
AutoCAD | Revit | SketchUp | Rhino | Twinmotion | Photoshop | Illustrator | Lightroom | InDesign

Personal Skill:

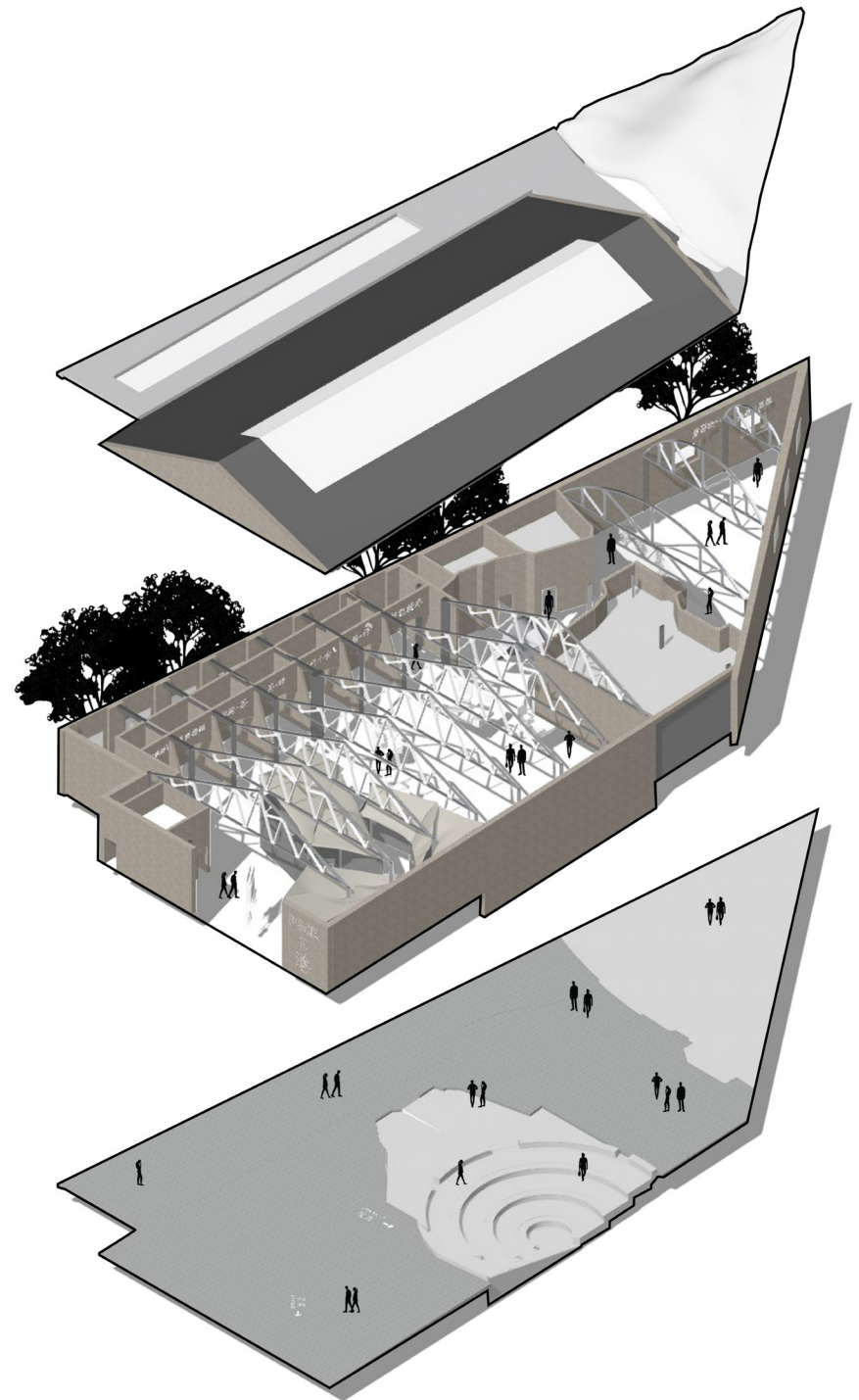
Photography | Sketch | Acrylic Painting | Time Management | Critical Thinking | Teamwork | Model Making | Space Planning | Construction Drawings



Project 001: *PECK X 港*



The idea is to insert Hong Kong to Peckham (site), so I decided to input these Hong Kong icons to the site.



Isometric drawing with programs.

Neon light

Materials that can maximize neon light effect.



Contora pattern glass



Frosted glass



Line pattern glass



Reflective glass

Neon light as the main part of 2000s Hong Kong, I designed different neon signs for different rooms. I tested on how it cooperates with different materials such as glass and different light sources.

Merging the souls

Hong Kong x London



Triangular columns in Hong Kong Cultural Centre.



Arch-shape space where are easily found in London.

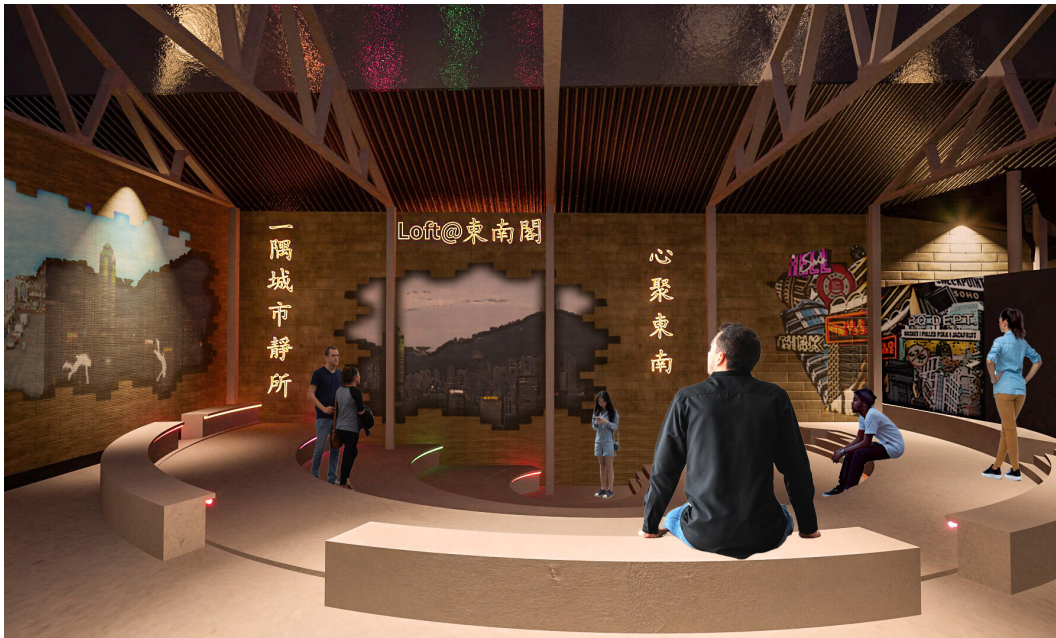
To combine the soul of Hong Kong and London, I merged the elements of Hong Kong and London into my site. This is to bring the existing urban design into interior design, innovating new way of designing interiors.



How it looks like with the combination of the two cities.

Rendering

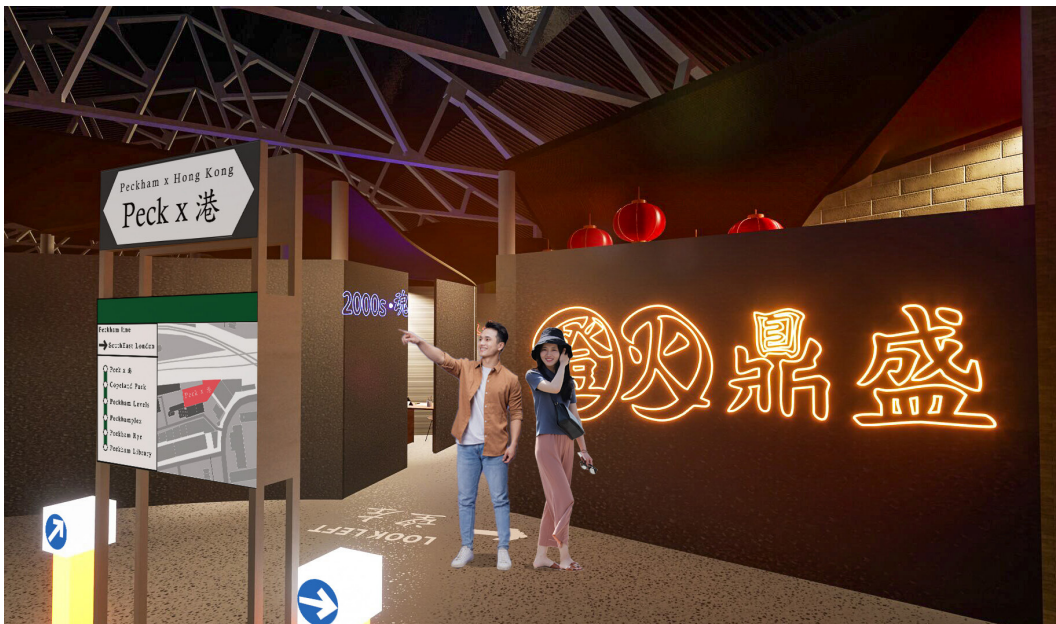
Get inside of my project



Plaza as the main program in the project: To unite Hong Kongers and Peckham locals.



Bar: To solve conflict through a calming environment and communication.

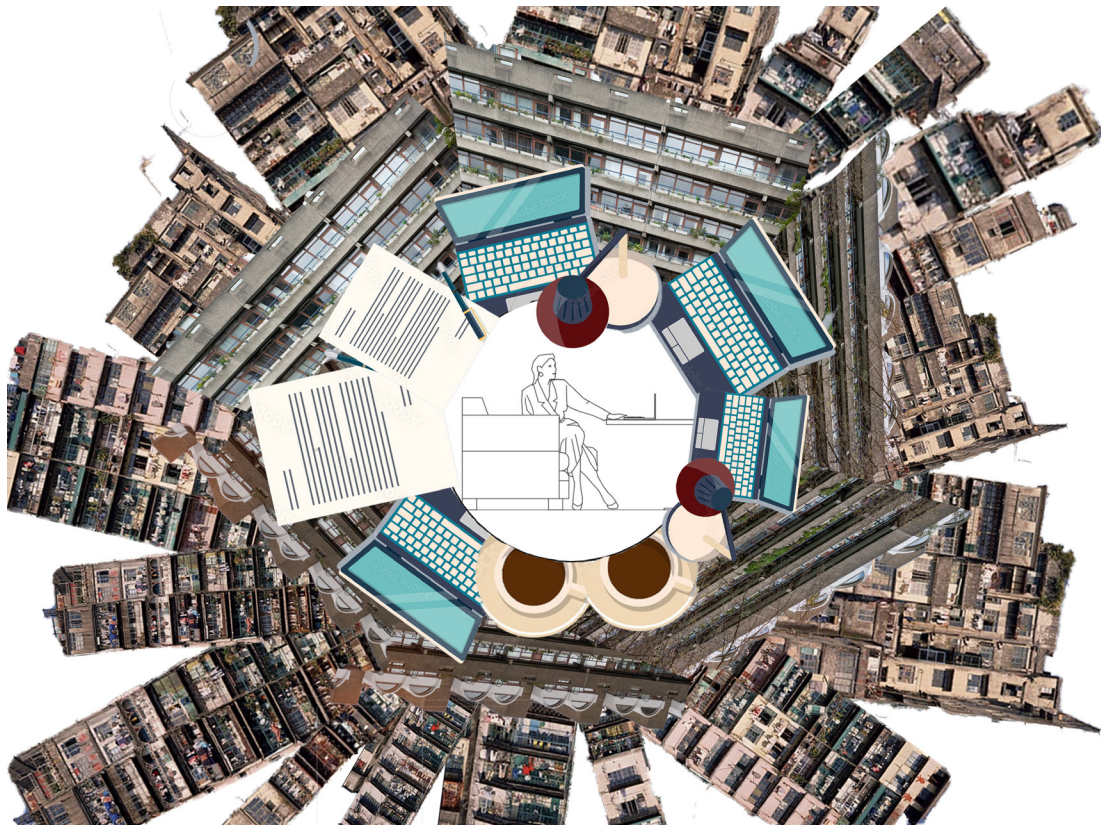


Recreating an iconic groceries market in the site.



Bench design + food stall which are full of Hong Kong characteristics.

Project 002: *Space within a space*



Design Concept: Design a space where people can enjoy privacy within public space.



Rendering: Privacy even in a public garden in an office building.

Seen and unseen

Privacy within public space



Huge curtains are placed across the space. The design is to allow users to have privacy within public space and to make it feel like home.

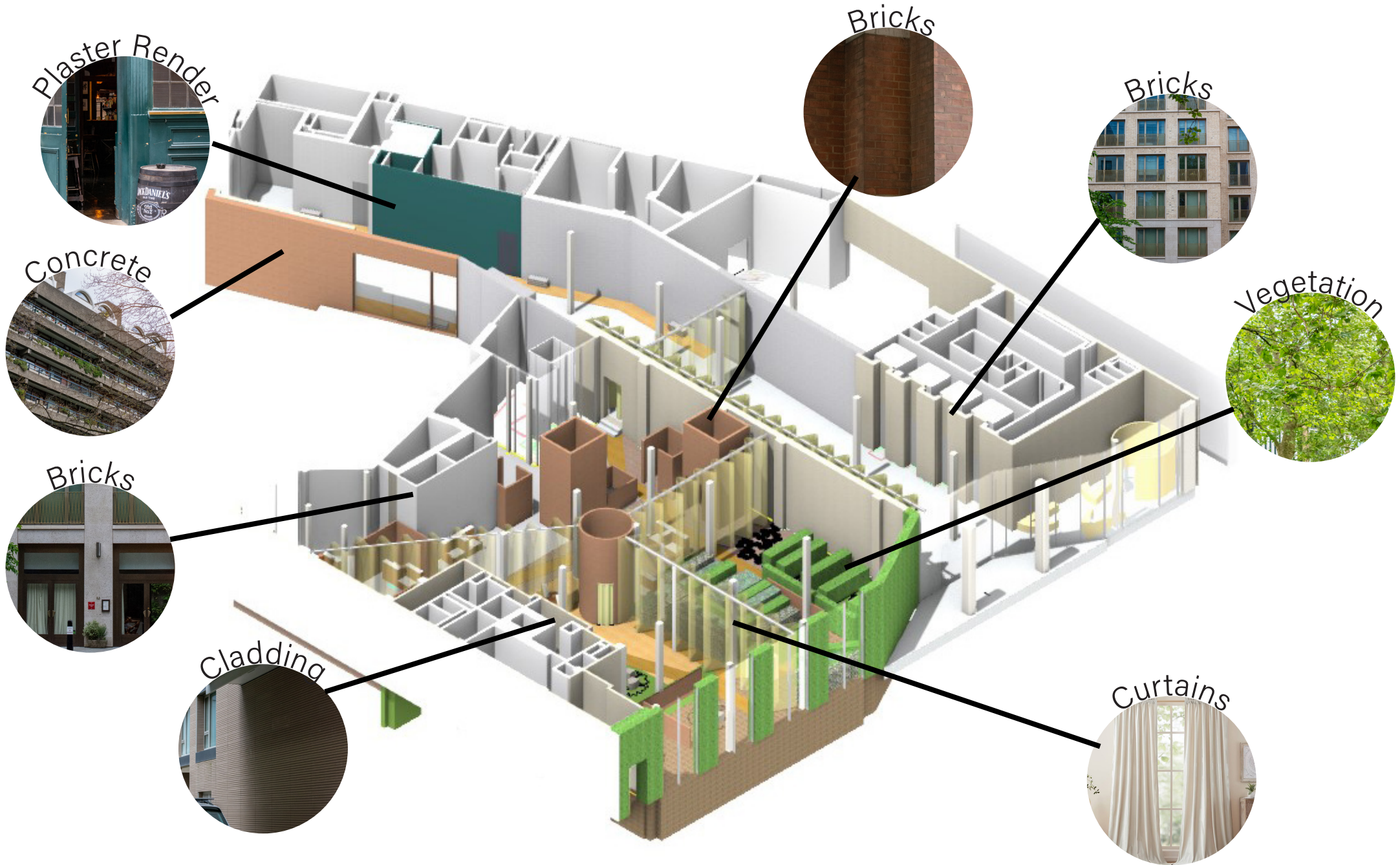


Experiment with transparency of materials.

Concept model with greening.

Materiality layout

Creating a small version of Barbican within this building



Project 003: *TETRIS*

This project is to show how a high-rise building to be constructed with structure, facade and interior design. It required loads of professional knowledge to make this happen.

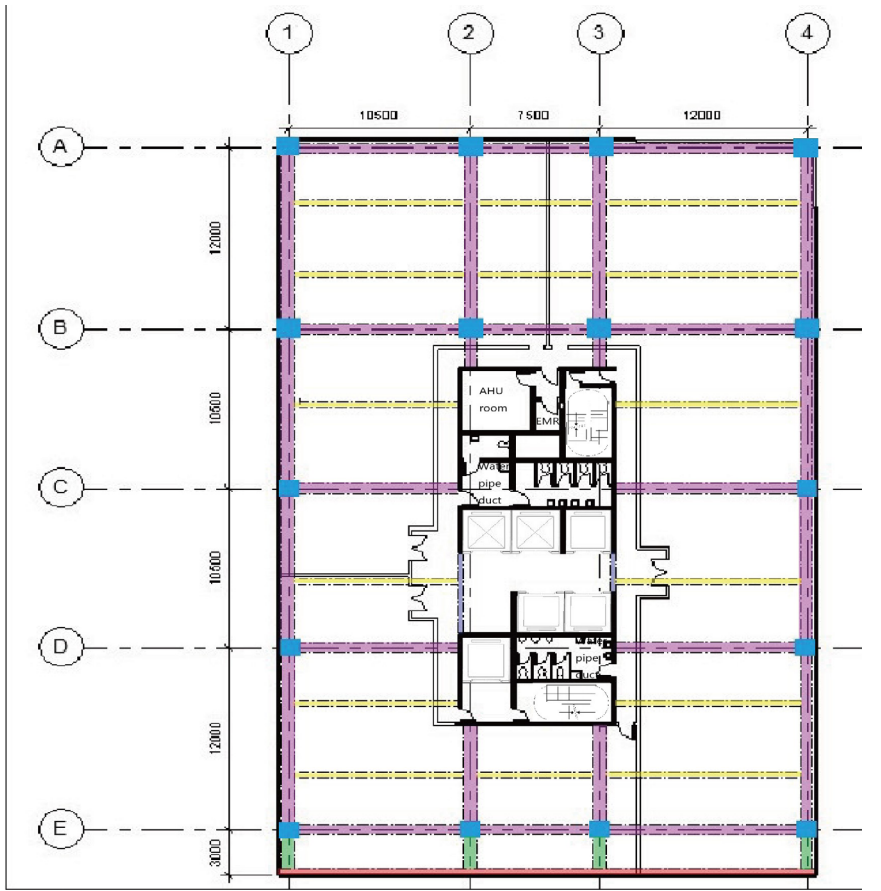


Exterior view of the designed YMCA building.

Project 003: Tetris

Merging Hong Kong community with a mixed used building

Structural Plan



- R.C. Primary Beam
W: 500mm, D: 750mm
- R.C. Secondary Beam
W: 400mm, D: 600mm
- R.C. Cantilever Beam
W: 500mm, D: 750mm
- R.C. Edge Beam
W: 300mm, D: 750mm
- R.C. Tie Beam
W: 250mm, D: 375mm
- R.C. Column
1000mm x 1000mm
- R.C. Load bearing wall
W: 250mm
- R.C. Slab
150mm thick

Zoning Plan



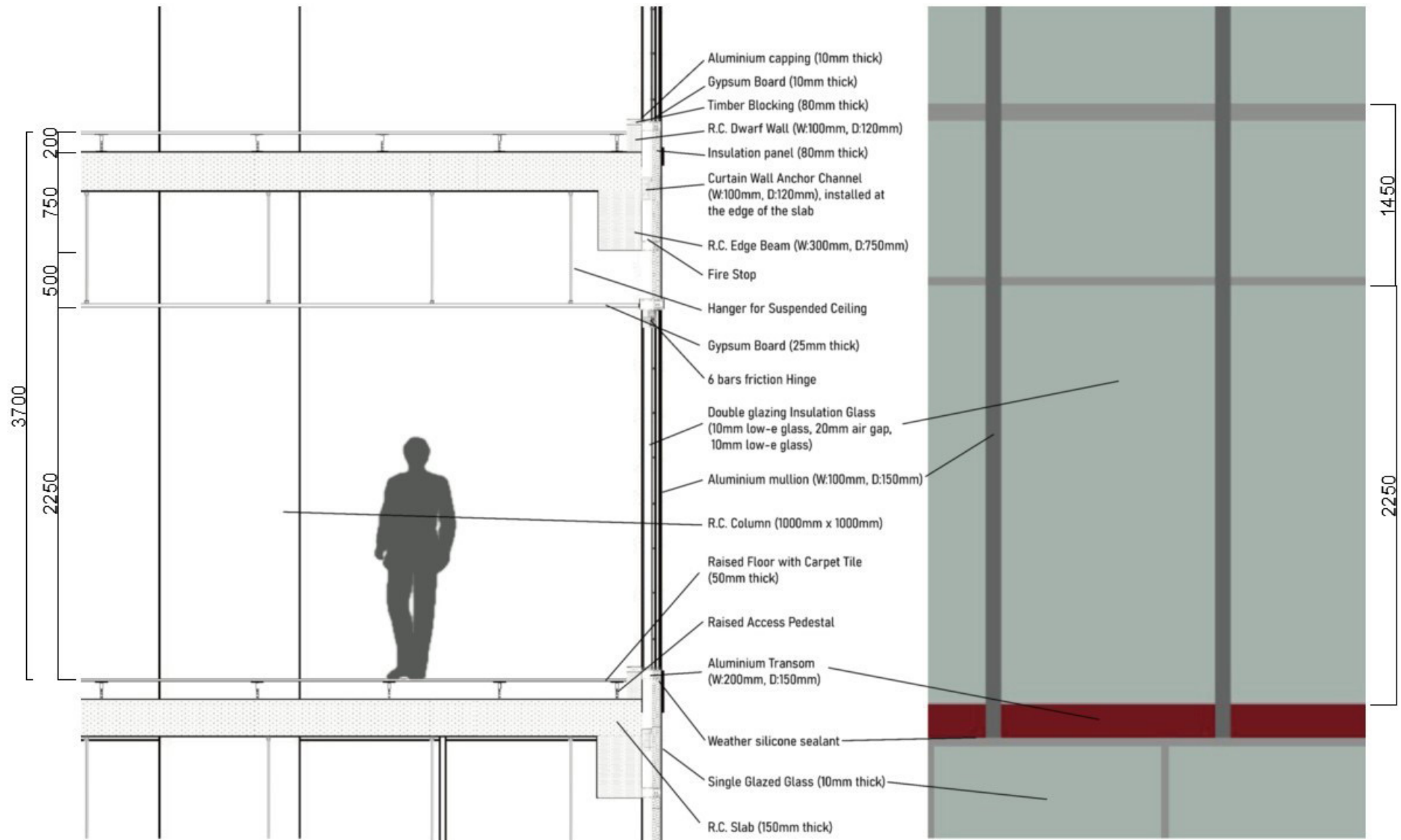
- Office 1
- Office 2
- Office 3

Taking office floors (8-16/F) as examples, the building is well-designed with core/ structural frameworks and spaces planned for each users with sufficient fire escape routes.



Detailed Section

Materiality and structure cross-section



Structure is built precisely to be stable and considering the exterior and interior aesthetics as well.

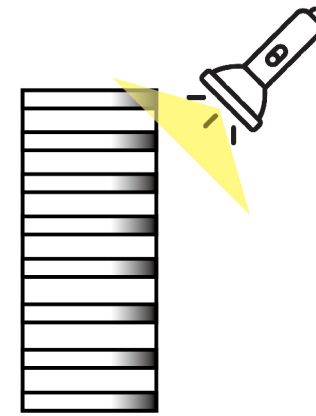
SCALE BAR 1:250



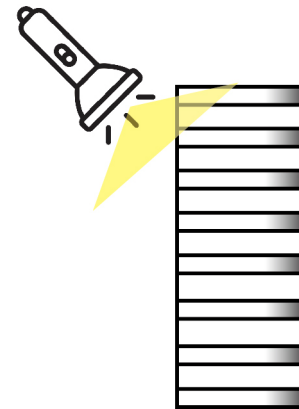
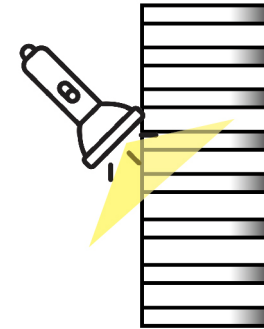
Project 004: SOFTNESS

This project is to examine how we create atmosphere through sensory perception. The experiment on the right is to show how the intensity of light work with shape.

Soft Light



Strong Light



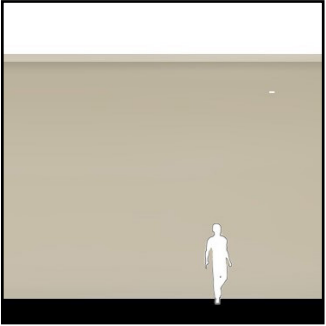
Powerful/ Suitable/ Cozy

Experimenting on how scale affect atmosphere

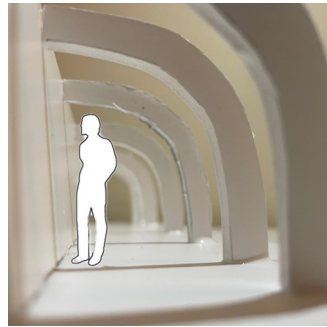
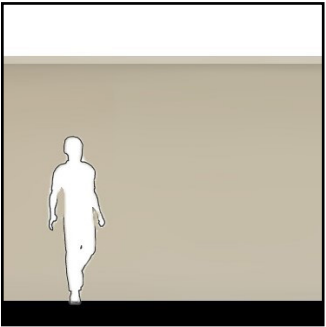
Main structure

Pavilion

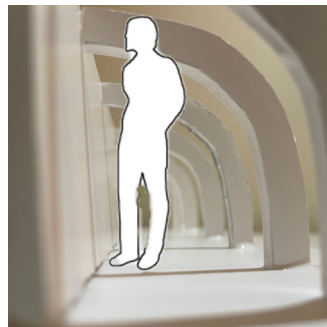
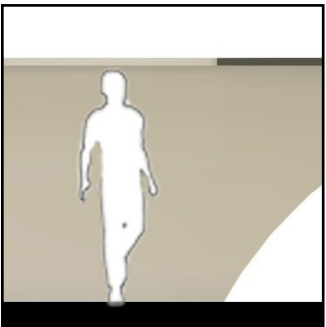
Small



Normal



Large

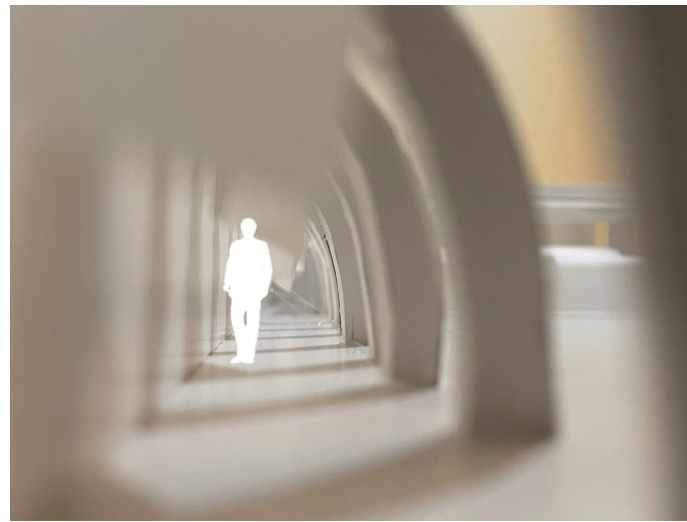


I tested on how scale affect users' perspective, it made me create an idea of placing a ghosted sofa in the site, it gives some personal space within public area by dividing spaces.

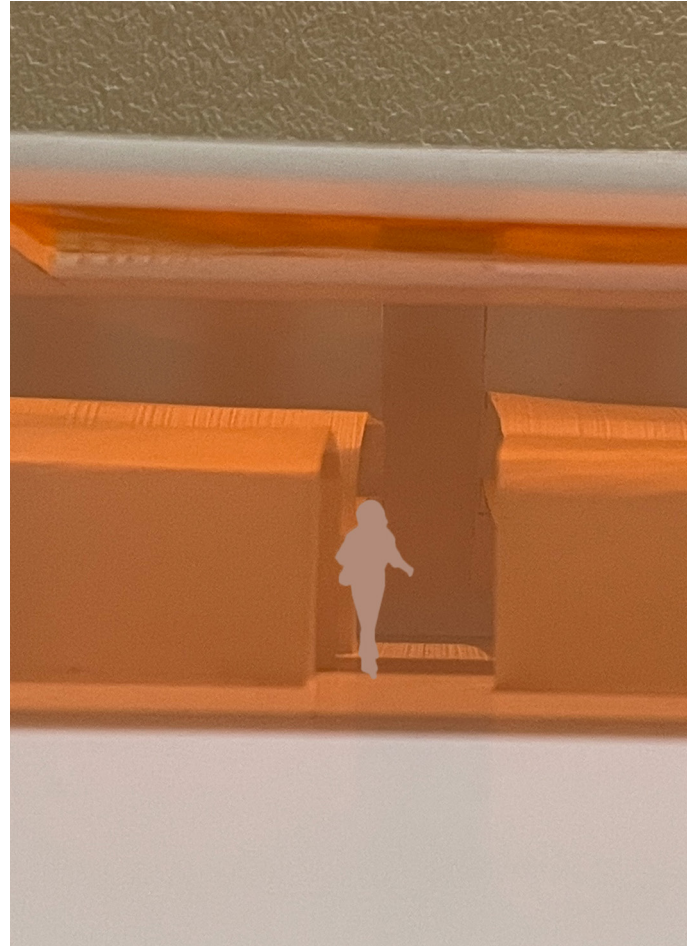
The material tracing paper allow light to enter the space in a translucent way, it creates a soft atmosphere and allow people to interact with it.

Final Model

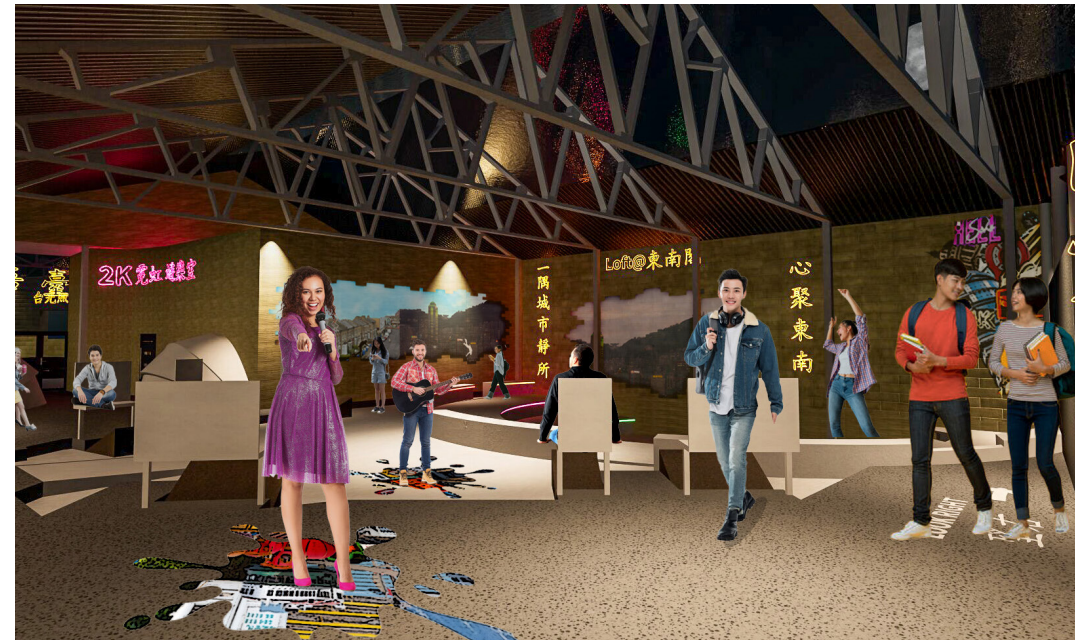
Warm and intimate atmosphere



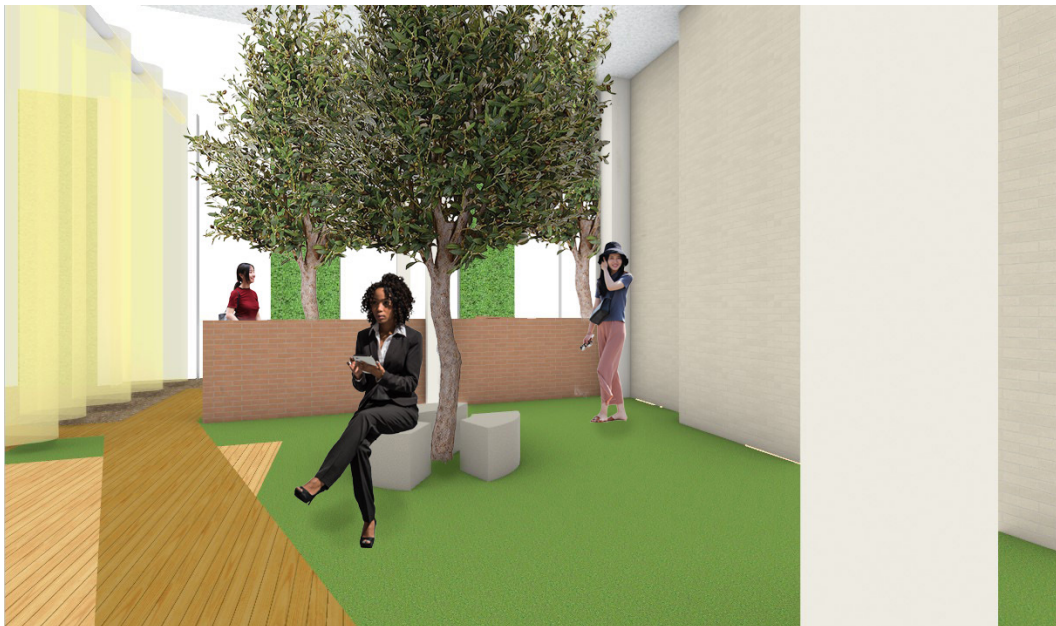
I tested on different colors and color peach is the final result on creating a warm and intimate atmosphere.



PROJECT BOARD: 2021-2025



PECK X 港. Interior Overview.



Space within a space: Garden Overview



Softness: Physical model Overview.



Install: Project Overview



Tetris: Selected work Overview.



Jenga: Selected work Overview.

Let's Connect

Anson Choi

Graduate Interior Designer

London, UK

Phone: +44 7552975800

Email: choiwinghayanson@gmail.com

LinkedIn: [linkedin.com/winghayansonchoi](https://www.linkedin.com/winghayansonchoi)

