

# **LANCE M. GILLESPIE**

A DYNAMIC COLLECTION OF WORKS RELATING TO INTERIOR DESIGN

---

(480) 267 - 7405 | [lancepmg@gmail.com](mailto:lancepmg@gmail.com)

# LANCE M. GILLESPIE

INTERIOR DESIGNER | BRIDGING INTERIOR ARCHITECTURE & DESIGN

(480) 267 - 7405 | lancepmg@gmail.com



## ACTIVITY & PASSION

Highly motivated interior designer with an architectural sensibility and a passion for creating spaces that balance function, form, and human experience. With 3+ years and 100+ projects in commercial, hospitality, workplace and other diverse project types I bring both creative curiosity and technical precision to every phase of design. Skilled in turning conceptual ideas into buildable, practical, and useful solutions that express identity while supporting the people who inhabit them.

## PROFESSIONAL & TECHNICAL SKILLS

### • Design & Technical

Space Planning — FF&E Specification — Construction Documentation — Graphic Design — Brand Integration — Sustainability Principles — Client Presentations — Site Measurement & As-Built Drawings — Concept Development

### • Software & Visualization (Mac + Windows)

AutoCAD Architecture — Revit — SketchUp — Twinmotion — Bluebeam — Miro — Adobe Creative Suite (InDesign, Illustrator, Photoshop, Acrobat) — Microsoft 365 — Familiar with AI-assisted workflows (Photoshop AI, ChatGPT) for verification, AI renders through ReRender (familiar with others), Visualization & Research

### • Professional Competencies

Client Relations — Collaboration — Problem Solving — Time Management — Communication — Organization — Adaptability

## AWARDS & CERTIFICATIONS

- (2019) | FBLA AZ State Competition | *Graphics Design 5th Place*
- (2019) | Certificate of Proficiency in Business | *Entrepreneurship Fundamentals*
- (2019) | Certificate of Arizona Technical Skills | *Standards of Business Management*
- (2019) | Certificate of Arizona Technical Skills | *Graphic and Web Design*
- (2022) | ISA - Light for Hope | *Design Competition 2nd Place*

## EDUCATION

- **May 2019 | Diploma - Certs in Business & Graphic/Web Design) | *Show Low High School - NPC***  
A dual enrollment program through Northland Pioneer College that provided three college certifications specializing in business management, entrepreneurship and graphic/web design.
- **March 2022 | Minor in Sustainability | *Arizona State University (Summa Cum Laude)***  
18-credit hours surrounding sustainability issues both in the micro and macro levels of design with research into overall impacts, analysis of applicable solutions and creation of solutions.
- **May 2023 | Bachelors of Science in Design | *Arizona State University (Summa Cum Laude)***  
This is a 4-year long program of study that takes a unique learning and research approach for the exploration of how people inhabit, interact with, and transform interior environments.

## EXPERIENCE

- **June 2023 - June 2025 | Architectural Designer | *Evolution Design Inc. - Tempe, AZ***  
Collaborated on 100+ projects ranging from corporate offices and hospitality spaces to education and industrial environments. Contributed across all design phases from field verification and space planning through construction documentation and permitting.
  - Developed mood boards, FF&E palettes, and pricing plans to align design intent with budget.
  - Coordinated with engineers, contractors, and clients on submittals, RFIs, and construction details.
  - Conducted site visits and as-built documentation to support accurate CD production.
  - Supported branding, marketing, networking, and social-media initiatives to strengthen firm presence.
- **May 2022 - February 2023 | Intern then Junior Designer | *Mackenzie Collier Interiors - Phoenix, AZ***  
Assisted in 25+ residential and boutique hospitality projects emphasizing experience-driven design and material storytelling through clear, concise and consistent communication.
  - Produced space plans, concept boards, and presentations integrating brand identity and functionality.
  - Managed FF&E selection, specification, and procurement coordination.
  - Presented in client meetings and supported social-media and branding efforts.
- **August 2019 - May 2023 | Microsoft then Student Success | *Education at Work - Tempe, AZ***  
Provided technical call support at Microsoft until promoted to working directly with the non-profit partners to ensure success for the workplace by scheduling and conduct interviews, aiding in recruitment outreach, and assisting in the orientations/onboarding/training for incoming employees.

## ROOTED IN PEOPLE AND PLACE

*Growing up in a small town amongst the pine forests and wide skies of Show Low, Arizona, I learned early how deeply our surroundings influence how we feel and connect. That understanding became the foundation for my approach to design; one that values curiosity, empathy, and everyday function as much as aesthetics.*

*My path began in graphic design and evolved into interior architecture, where I discovered the power of shaping space to support real people and real goals. At Arizona State University, where I earned my B.S. in Interior Design and a Minor in Sustainability, I explored how design can improve daily life, from workplace well-being to hospitality experiences that foster belonging.*

*I'm drawn to projects that invite innovation; sometimes through blending styles, inventing new details, or rethinking how materials meet purpose. My goal is always the same: to craft environments that express identity, encourage connection, and feel intuitively right for the people who use them.*

*"Design should make life easier, brighter, and more connected; one thoughtful detail at a time."*

— Lance Michael Gillespie

## TABLE OF CONTENTS (ORGANIZED BY PHASE W/ CASE STUDIES)

Intro - Resume - Table of Contents.....	1-3
• Concept & Research (Identity, Planning & Strategy).....	4-6
Case Study #1 (Hospitality).....	7
• Schematic & Space (Adjacency, Circulation & Scale).....	8-10
Case Study #2 (Workplace).....	11
• Materiality & FFE (Color, Furniture & Texture).....	12-13
Case Study #3 (Institutional).....	14
• Renders (3D Model Photorealistic Visualization).....	15-19
Case Study #4 (Hospitality).....	20
• Construction Documents (Coordination & Execution).....	21-24
Case Study #5 (Recreation).....	25
• Completed (Built & Realized Projects).....	26-29



## MY PROCESS

My design process begins with understanding people, context, and intent. Through research, storytelling, and conceptual exploration, I identify the emotional and functional drivers that shape a space. These early studies establish a clear design direction, grounding creative decisions in purpose rather than aesthetics alone.

## BRAND & IDENTITY

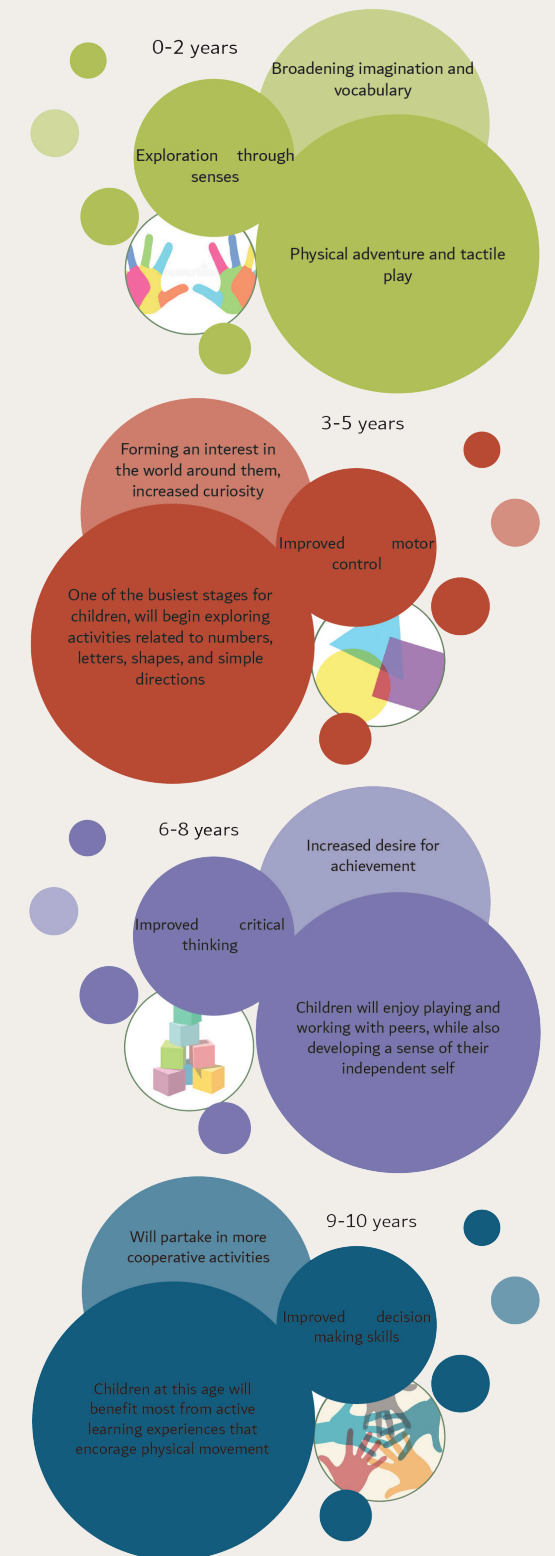
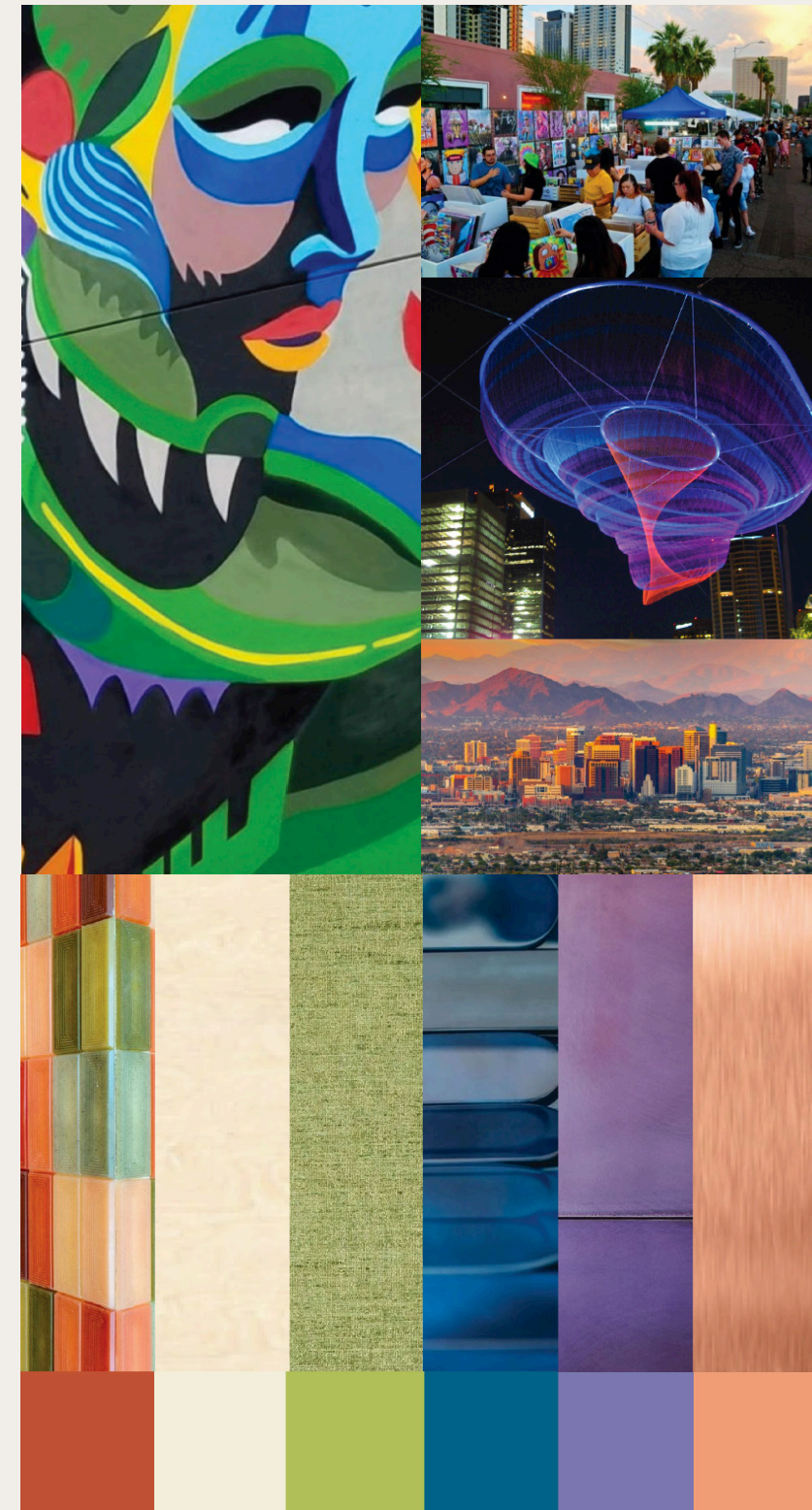
When a client does not have an established brand, I begin by defining identity first using branding as a strategic foundation that informs all design decisions moving forward. These explorations translate values, behavior, and intent into a visual system that can extend seamlessly into spatial design and user experience. (NEXT Rational Explained)



1. Organic outer form represents the human brain, reinforcing a people-first approach to innovation.
2. Baker-Miller pink was selected to reference the psychological influence of color on emotional response.
3. Intentional breaks in the form symbolize breaking barriers and challenging conventional thinking.
4. Six breaks correspond to the six emotional states explored within the workplace design.
5. Typography draws inspiration from computer circuitry, linking human cognition with technology.

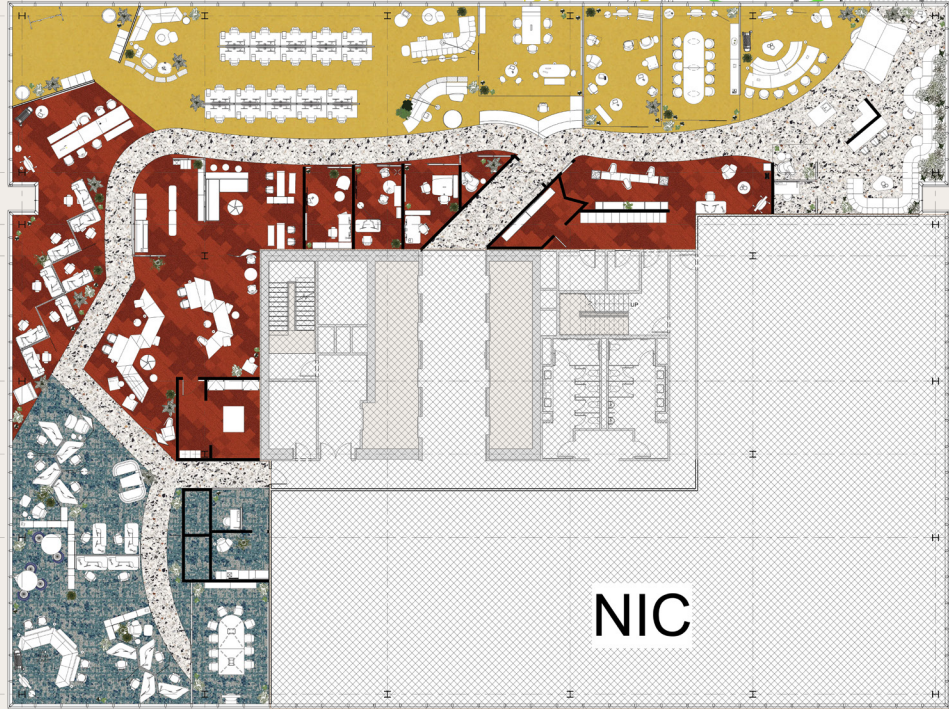
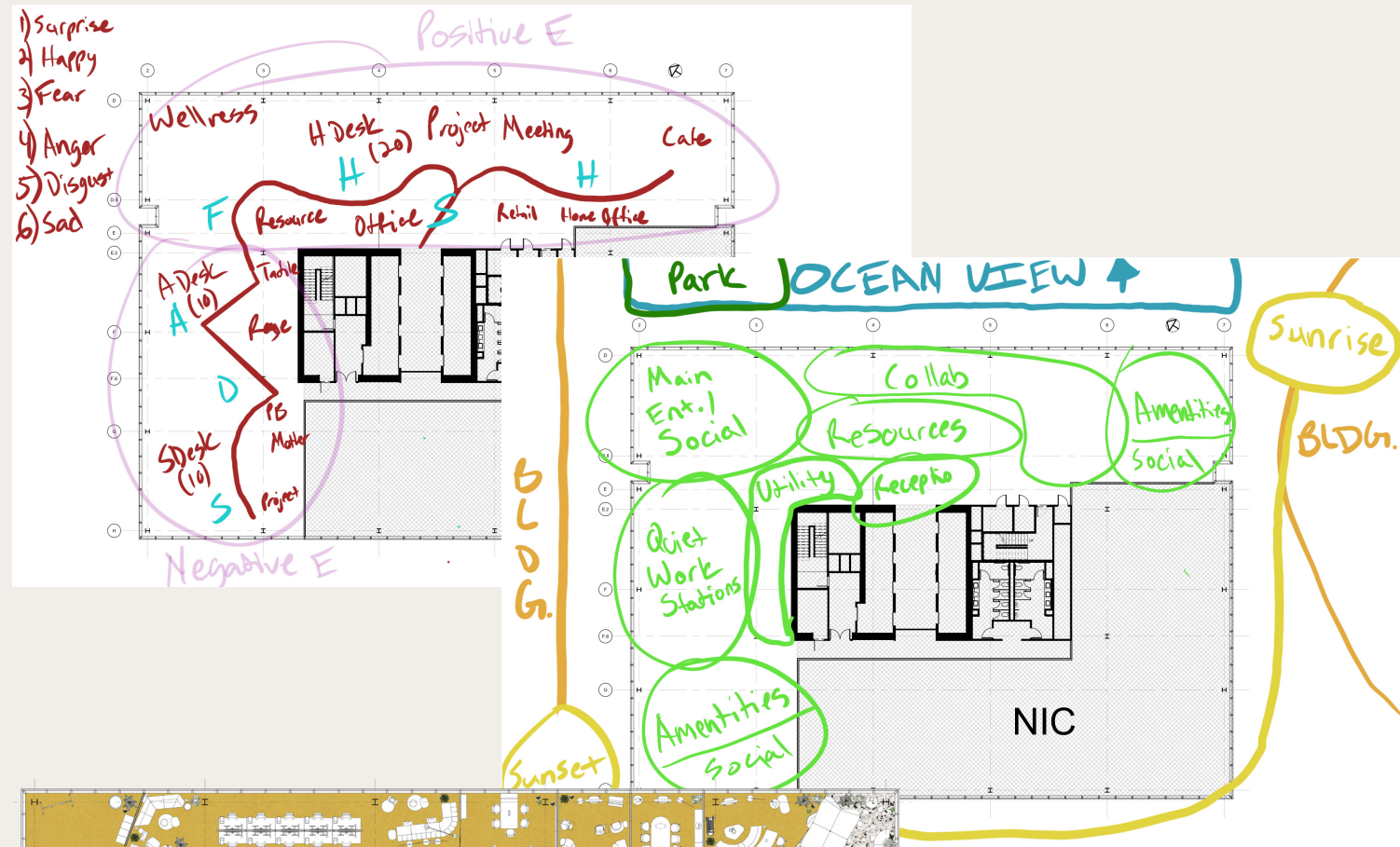
## RESEARCH & VIBE BOARDS

Early exploration focused on identity, experience, and intent.

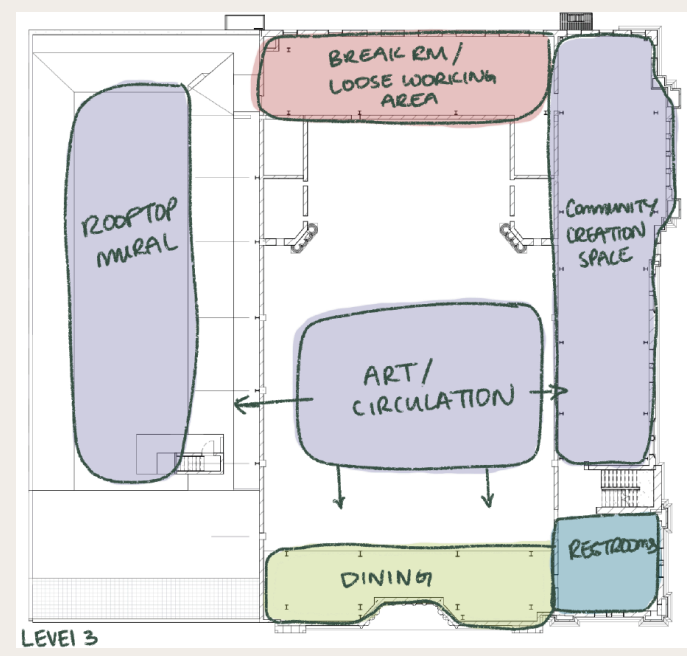
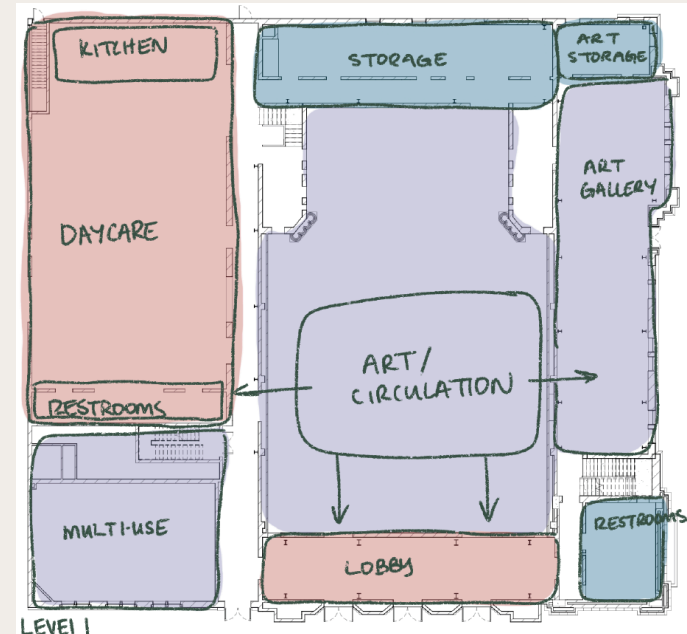


ADJACENCY, BUBBLE, FLOW & TRAFFIC DIAGRAMS

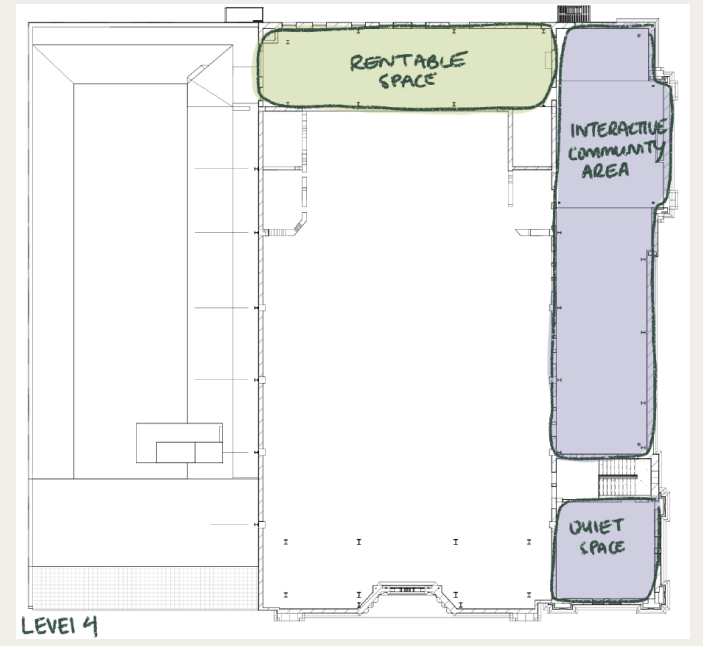
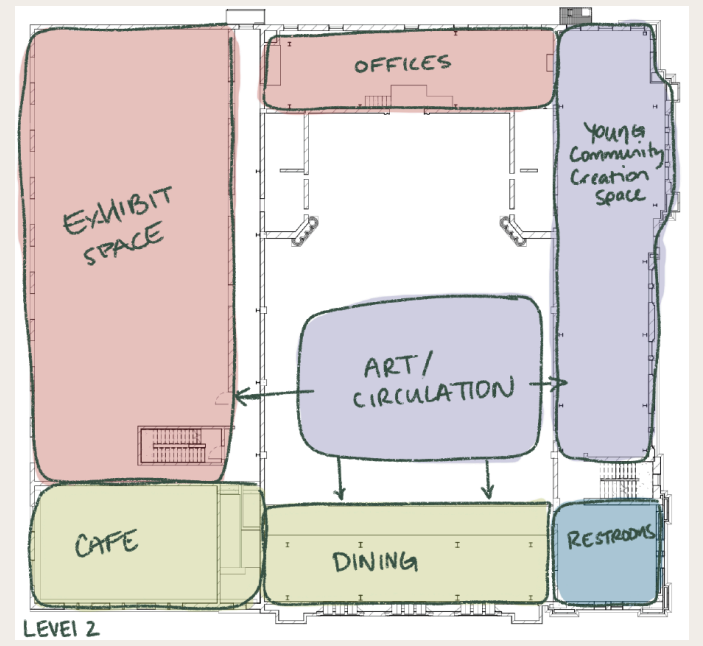
Early exploration informed by user behavior and emotional response.



Workplace Flow | NEXT | 2022

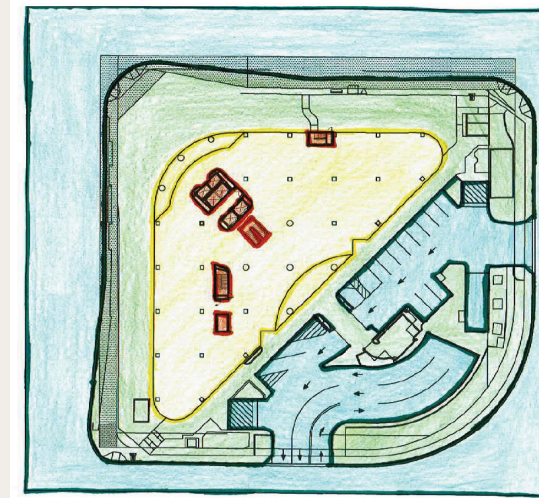
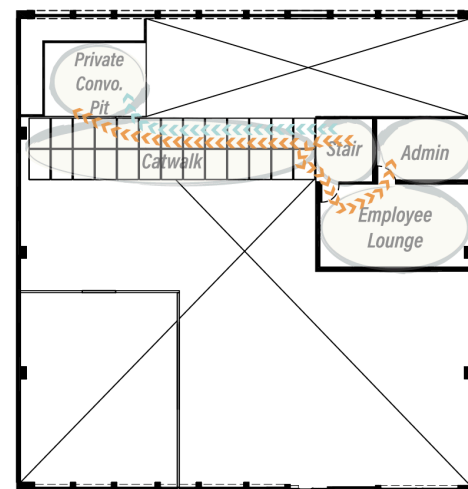
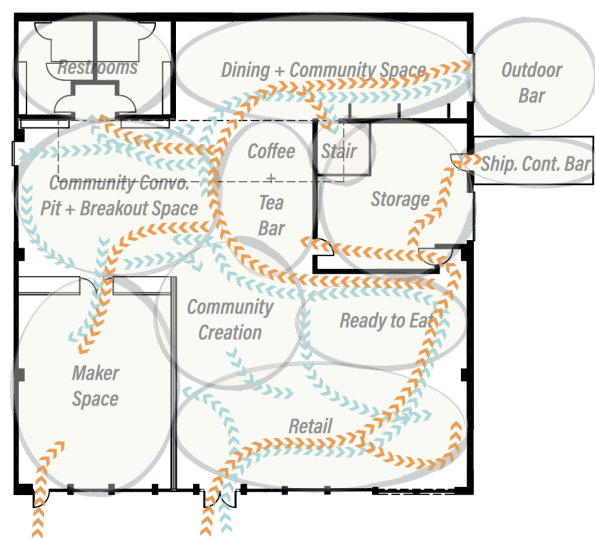
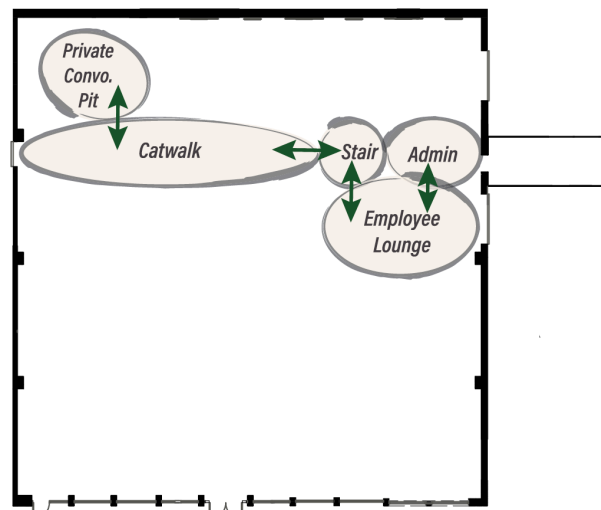
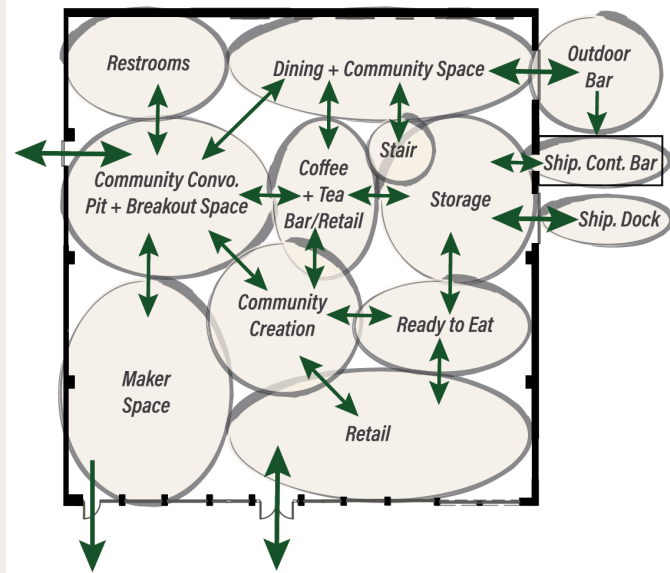


Institutional Flow | Children's Museum of Phoenix | 2023

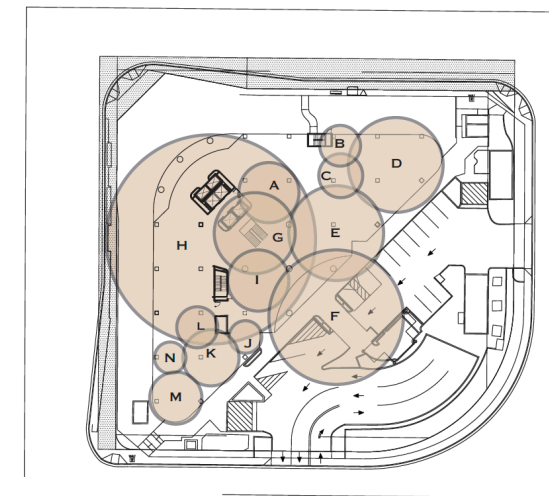
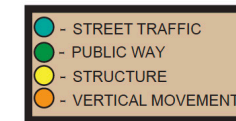


## ADJACENCY, BUBBLE, FLOW & TRAFFIC DIAGRAMS

As spatial programs evolve, so does the movement of the people who inhabit them. By studying horizontal and vertical adjacencies, circulation patterns, and high-traffic zones, I develop layouts that support efficient, intuitive, and organic flow for both customers and employees.



### SPACE IDENTIFICATION

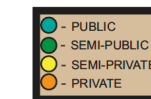


### BUBBLE DIAGRAM

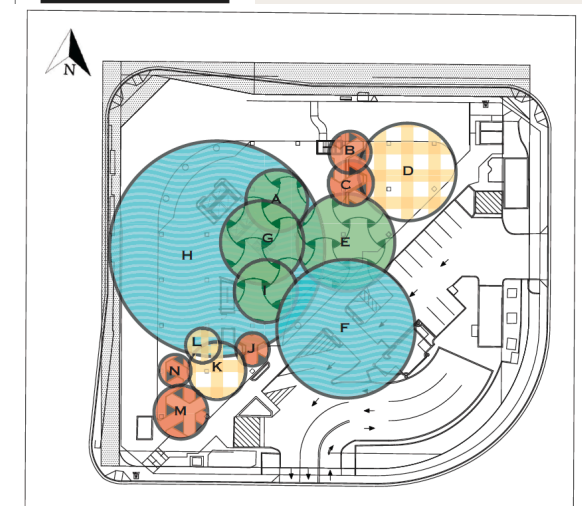
- A - GUEST RESTROOM
- B - FIRE + MECHANICAL
- C - CLEANING + MAINTENANCE
- D - KITCHEN
- E - DINING AREA
- F - RECEIVING AREA
- G - BAR
- H - HOTEL LOBBY
- I - HOST STAND + WAITING
- J - MANAGER'S OFFICE
- K - STAFF LOUNGE
- L - STAFF RESTROOM
- M - STAFF OFFICES



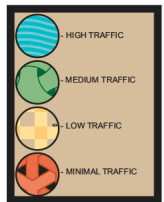
### PUBLIC/PRIVATE DESIGNATIONS



- A - GUEST RESTROOM
- B - FIRE + MECHANICAL
- C - CLEANING + MAINTENANCE
- D - KITCHEN
- E - DINING AREA
- F - RECEIVING AREA
- G - BAR
- H - HOTEL LOBBY
- I - HOST STAND + WAITING
- J - MANAGER'S OFFICE
- K - STAFF LOUNGE
- L - STAFF RESTROOM
- M - STAFF OFFICES



### TRAFFIC AS TEXTURES



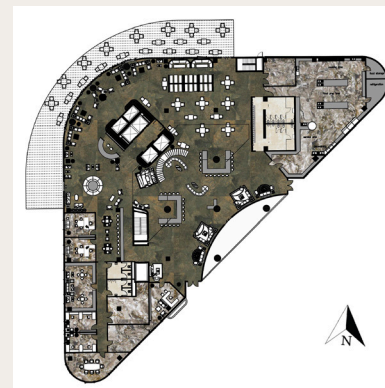
- A - GUEST RESTROOM
- B - FIRE + MECHANICAL
- C - CLEANING + MAINTENANCE
- D - KITCHEN
- E - DINING AREA
- F - RECEIVING AREA
- G - BAR
- H - HOTEL LOBBY
- I - HOST STAND + WAITING
- J - MANAGER'S OFFICE
- K - STAFF LOUNGE
- L - STAFF RESTROOM
- M - STAFF OFFICES

# HOSPITALITY CASE STUDY

PINEAPPLE PALMS HOTEL & THE GOLDEN CORE BAR/RESTAURANT - 2021

## CHALLENGE

Transform an existing office building into a hospitality experience that felt immersive, regionally rooted, and emotionally engaging.



## RESPONSE

Inspired by the idea of an urban oasis, the design layered tropical warmth with Southwest textures, using color theory, circulation studies, and brand storytelling to guide guest experience from arrival to suite.

## IMPACT & OUTCOME

The result is a hospitality environment that feels vibrant yet grounded; supporting social gathering, relaxation, and a strong, memorable brand identity.



## CONTRIBUTION/ROLES

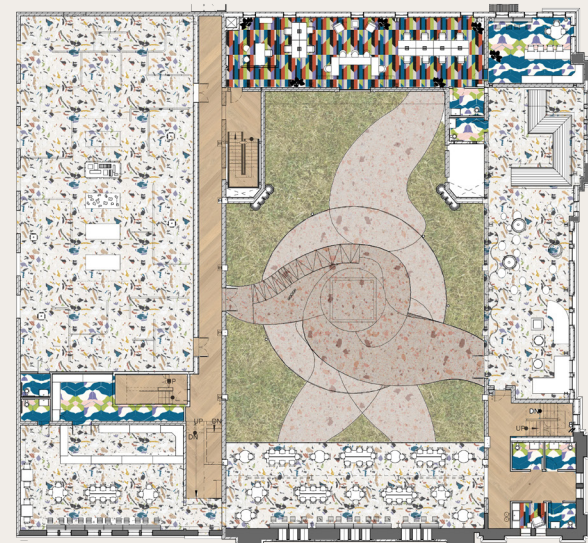
- Concept development and experience-driven design narrative
- Brand creation and visual identity integration
- Space planning and guest circulation strategies
- Public / private zoning and adjacency studies
- Material palette development and FF&E selection
- Color theory application across suites and public spaces
- Rendered plans, sections, and interior visualizations
- Design of bar, restaurant, lobby, and guest room typologies

## PLACEHOLDERS IN PLANNING

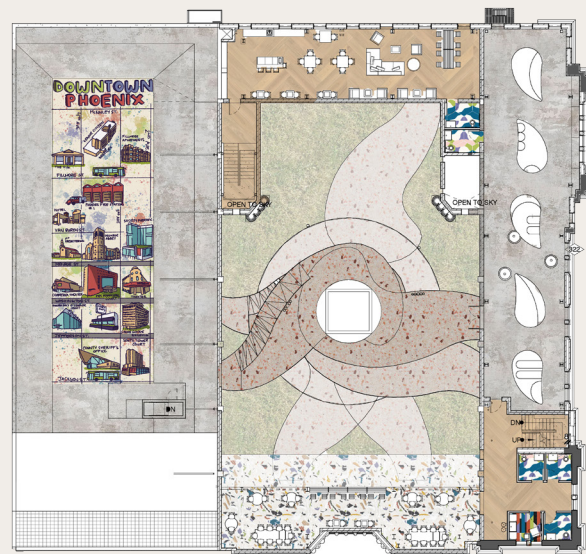
Schematic design is where ideas become spatial logic. I explore adjacency, circulation, and zoning to balance flow, privacy, and functionality. These studies prioritize how people move, gather, and inhabit space; ensuring that layouts support both experience and efficiency.



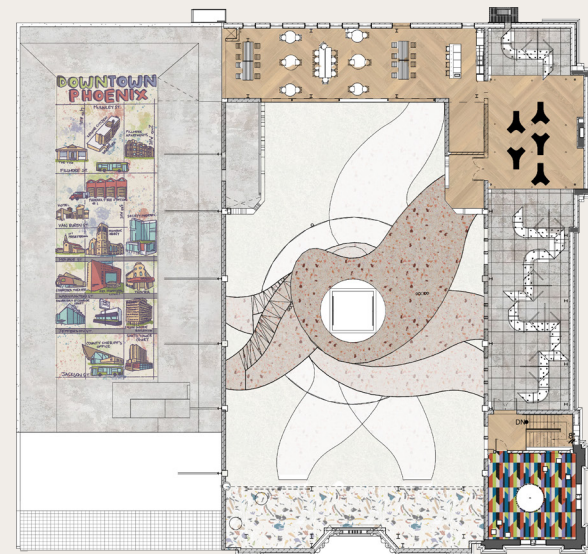
Level 1



Level 2

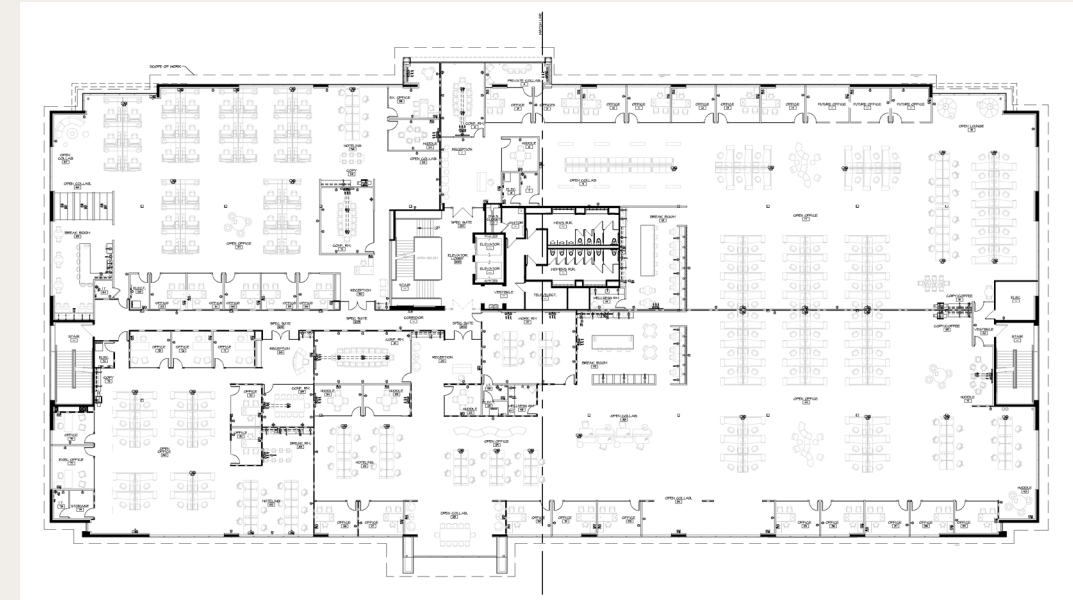


Level 3

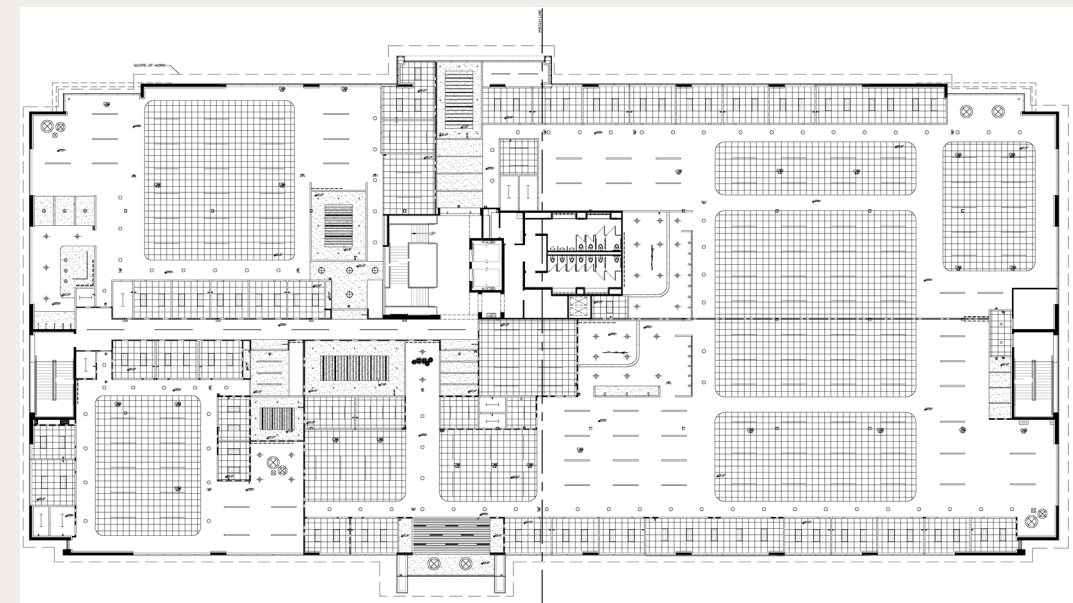


Level 4

Central Egress Space Planning | Children's Muesem of Phoenix | 2023



Full Floor Space Plan | Allred Building 7 & 8 | 2024



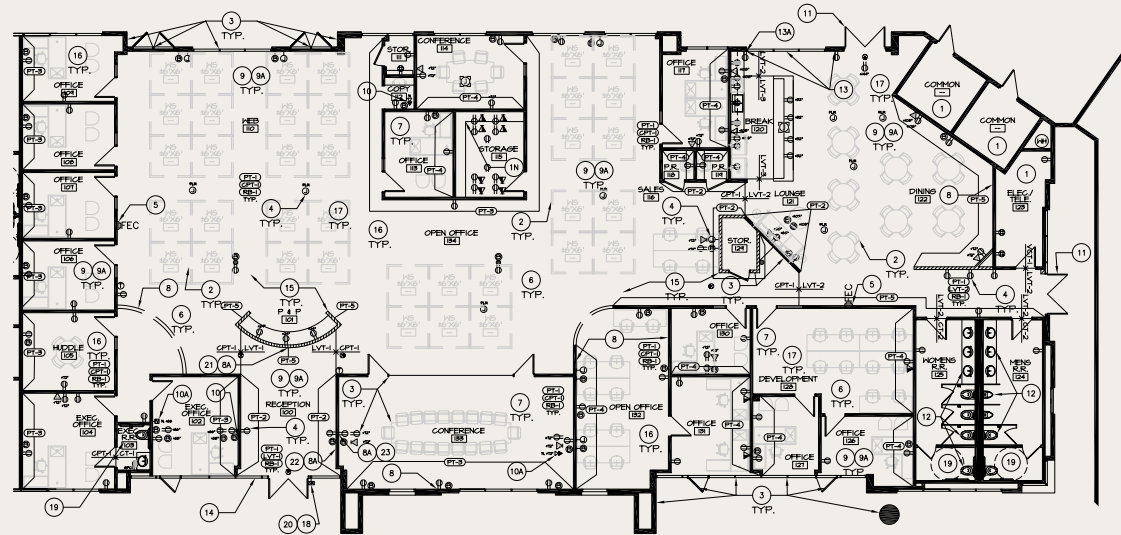
Full Floor Reflected Ceiling Plan | Allred Building 7 & 8 | 2024

## HIGH SQ. FT. DESIGNATION

My experience includes planning full floors within high-rise buildings, often accommodating large square footages and multiple tenant suites simultaneously. These projects required coordinating layouts across several buildings for the same ownership group, balancing consistency, efficiency, and flexibility while maintaining clear circulation and program separation at scale.

## PRICING PLANS

This pricing plan translates spatial decisions into budget-aware strategies, balancing program requirements, efficiency, and cost. It supports informed design choices by aligning layout options with financial considerations early in the planning process. (Finishes/Notes Not Shown)

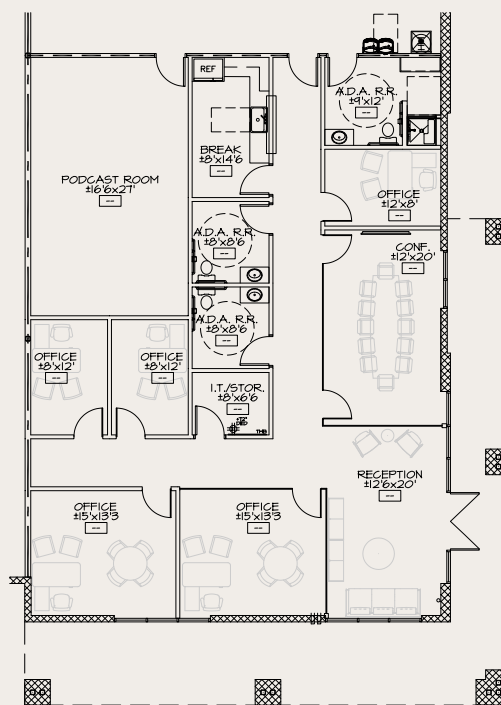


Workplace Pricing | Inhabit | 2024

## SPECIALTY SPACES

This space plan reimagines a warehouse environment as a flexible creative and production space. Zoning, circulation, and acoustic considerations support podcasting, collaboration, and adaptable use while maintaining clarity and operational efficiency.

- Added optional tech for heating and lighting controls
- Requested specialty materials for podcast space
- Required full bathroom and kitchen spaces and fixtures



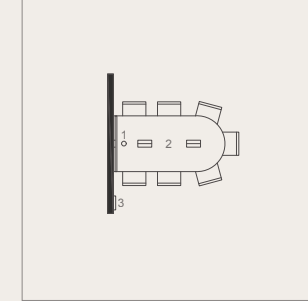
Office/Podcast/Warehouse | 2023

### Collaboration - Collab from Anywhere | Occupancy - 7 Seated

Key Design Features and Materials

- This is an open space for in-person & hybrid workers
  - The space is unassigned and synchronous workmode as it can be reserved and informs when it is in use.
  - Allows users to interact with each other and virtually to achieve goals for an organizational identity of flexibility.
  - Having an aesthetically pleasing support space such as this helps with attracting and retaining talent.

Furniture Plan | Scale: 1/4" = 1' - 0"

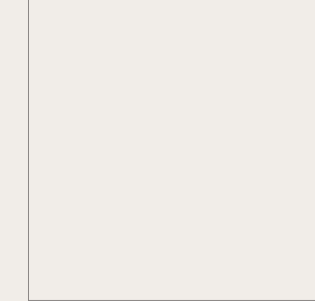


- 1) 360 Meeting Owl & Monitor to be provided for virtual collaboration.
- 2) Built in electrical ports for charging in table.
- 3) Space to be fitted with an electronic reservation machine.

- For ease of space planning/layout design is to modular specifications in 2' - 6" increments. Design measures 10' - 0" W x 10' - 0" L

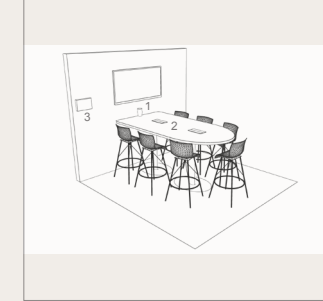
Design Drivers - Attracting and Retaining Talent, Organizational Identity, Space Planning/Layout, Work Modes

RCP | Scale: 1/4" = 1' - 0"



- 1) Technical Solutions Callouts
  - Technical Solution (Non-Callouts)

3D Axon | Not to Scale | Sq. Ft. = 100



- 1) 360 Meeting Owl & Monitor to be provided for virtual collaboration.
- 2) Built in electrical ports for charging in table.
- 3) Space to be fitted with an electronic reservation machine.

- Space may be fitted with dividers on select sides depending on chosen privacy and layout.

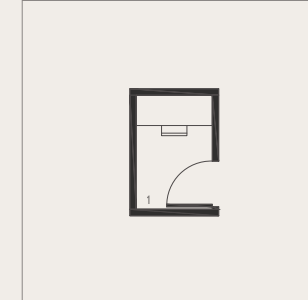
NT 464 - Fall 2022 | Designers: Lance Gillespie, Kendall Maclean, Raneem Mujahed, & Amanda O'Connell

### Focus - Privacy Work | Occupancy - 1

Key Design Features and Materials

- This is a private space for in-person workers
  - The space is unassigned and synchronous workmode as it can be reserved and informs when it is in use.
  - Provides a branded space with privacy to make users comfortable for virtual meetings.
  - Having an aesthetically pleasing support space such as this helps with attracting and retaining talent.

Furniture Plan | Scale: 1/4" = 1' - 0"

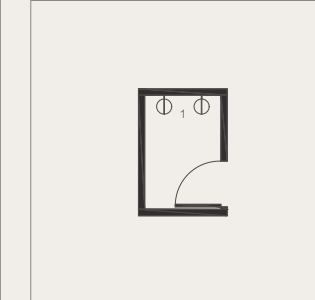


- 1) Wall behind door to be branded accent wall for those taking virtual meetings in the space.

- For ease of space planning/layout design is to modular specifications in 2' - 6" increments. Design measures 5' - 0" W x 7' - 6" L

Design Drivers - Attracting and Retaining Talent, Organizational Identity, Space Planning/Layout, Work Modes

RCP | Scale: 1/4" = 1' - 0"

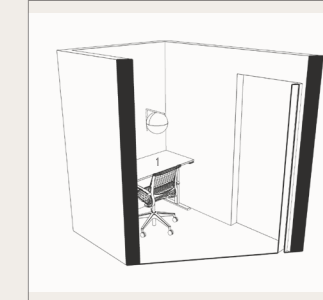


- 1) Double wall sconces to provide lighting for video conferencing.

- Ceiling height to be at 8' or shorter than existing spaces to hug user into space. (Lower height not recommended as it may cause the space to feel cramped.)

NT 464 - Fall 2022 | Designers: Lance Gillespie, Kendall Maclean, Raneem Mujahed, & Amanda O'Connell

3D Axon | Not to Scale | Sq. Ft. = 37.5



- 1) Standing desk to provide comfort and versatility.

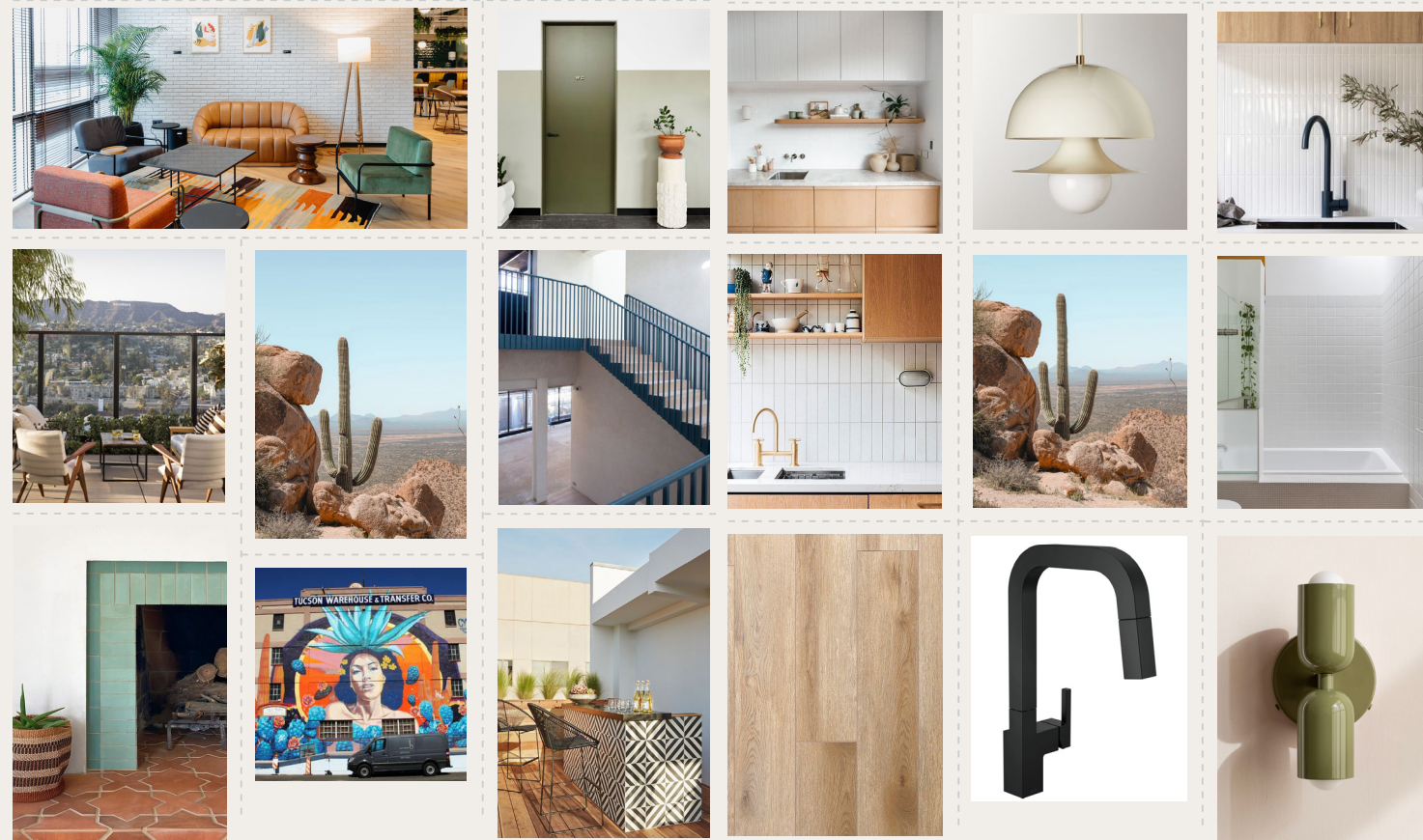
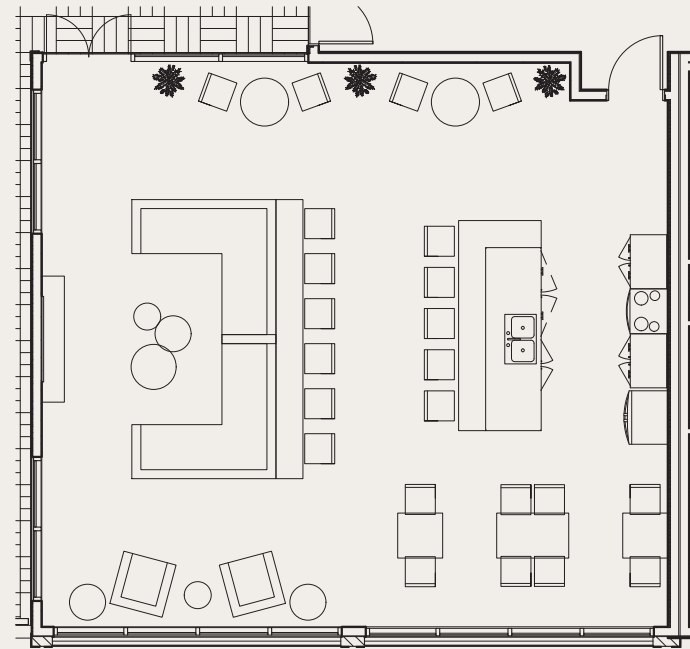
- Space to be fitted with an electronic reservation machine on the immediate exterior of the room.

## WORKPLACE TYPOLOGIES

These workplace typologies explore how different work modes—focus, collaboration, and social engagement—can coexist within a single environment. Each typology is designed to balance flexibility, comfort, and performance, allowing users to choose spaces that best support their tasks and energy levels.

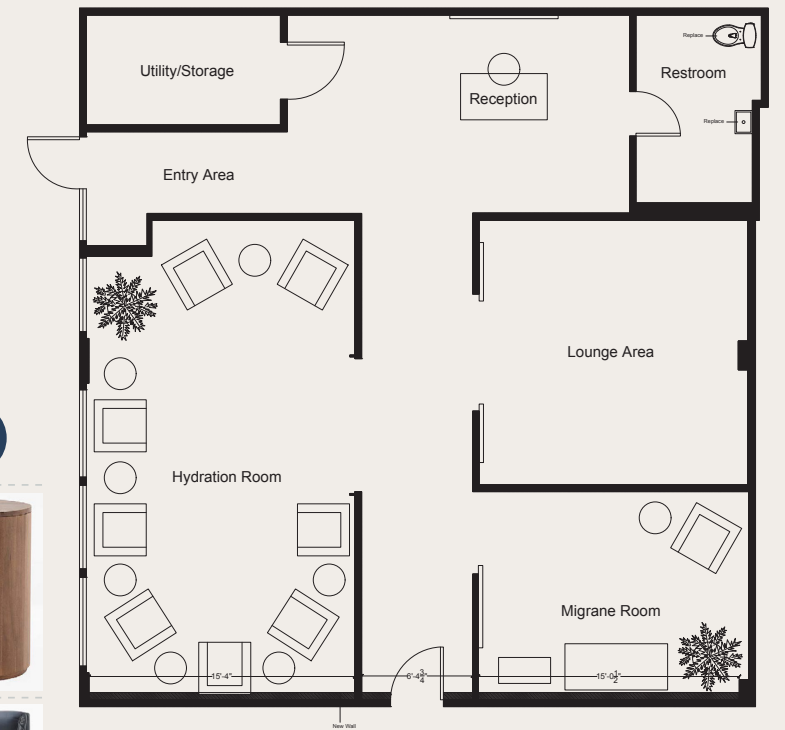
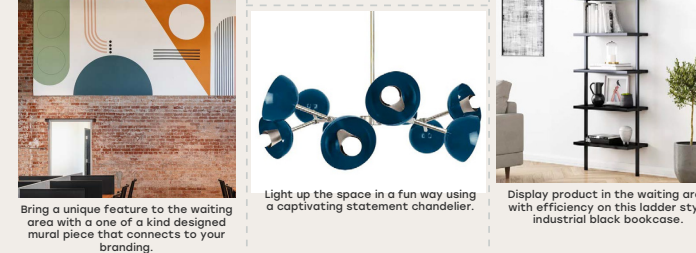
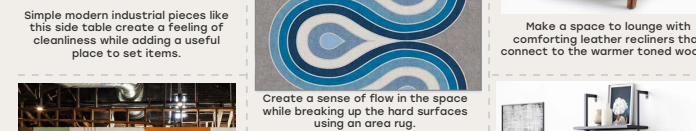
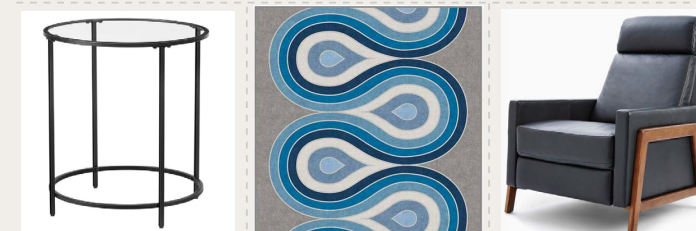
### MOOD MEETS SPACE PLANNING

This community space was designed to support gathering, connection, and daily use within a multi-family housing development. The plan balances flexibility and function, accommodating dining, entertainment, and social activities while maintaining strong visual and physical connections to the outdoor patio. The aesthetic draws from Arizona landscapes and cultural influence through color and material referencing, rather than replicating.



### MOOD BECOMES STAPLES

This IV treatment center was organized around the concept of fluidity, using water as a guiding inspiration for both movement and form. Curved geometries, softened transitions, and organic spatial flow support a calm, restorative experience, while the brand's blue palette reinforces clarity, trust, and wellness throughout the space.

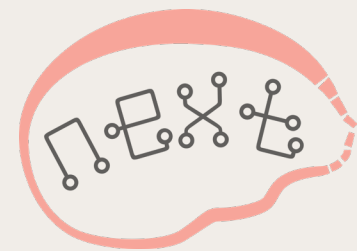
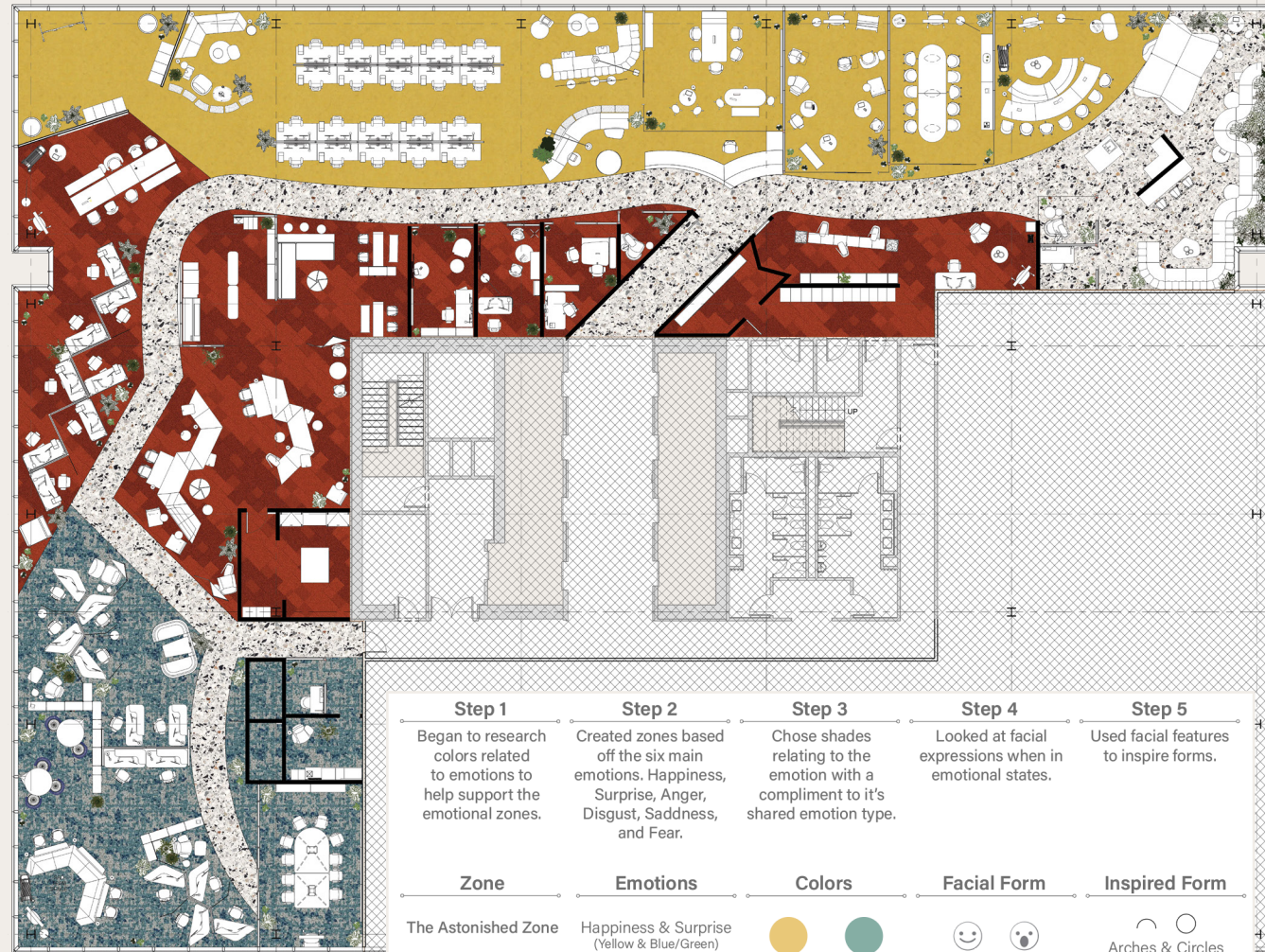


# WORKPLACE CASE STUDY

NEXT (STEELCASE DESIGN COMPETITION) - 2022

## CHALLENGE

Design a workplace that supports emotional well-being while accommodating diverse work styles in a hybrid, technology-driven environment.



## RESPONSE

The space was organized into emotionally driven zones, using color, form, acoustics, and spatial hierarchy to allow users to choose environments aligned with focus, collaboration, or restoration.

## IMPACT & OUTCOME

The workplace promotes mental health, flexibility, and engagement—positioning design as an active tool for employee well-being and productivity



## CONTRIBUTION/ROLES

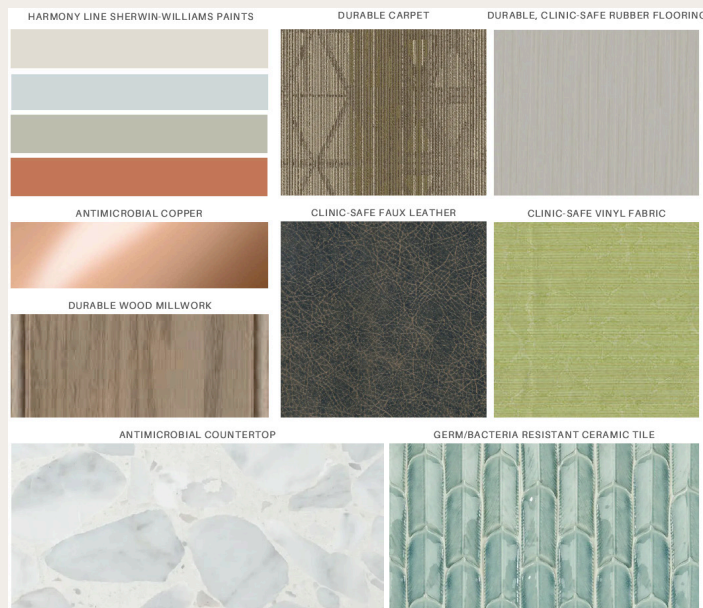
- Workplace strategy and user-experience research
- Emotion-based zoning and spatial hierarchy development
- Space planning for hybrid, collaborative, and focused work modes
- Brand identity development and environmental branding
- Material, color, and acoustic strategy by work zone
- Custom workstation, furniture, and typology design
- Rendered plans, diagrams, and experiential visualizations
- Life safety planning and workplace systems integration

## COLOR & MATERIAL MAPPING

The material and color strategy is informed by regional landscape and emotional response. Color was mapped to create intuitive transitions between spaces, using texture, tone, and contrast to support comfort, clarity, and wayfinding. Natural references were abstracted rather than literal—allowing the environment to feel grounded, familiar, and calming without becoming thematic.



First Floor | Mountain Park Health Center | 2022



**Beige**  
Beige and tan are the colors of the desert-inspired palette because it is the color of the soil and their heavy association with that landscape. Anyone who lives in Phoenix will be most familiar with this neutral tone. We used it heavily in public areas to create an easy transition from the outside to the inside. It is designed to be familiar and put users at ease as soon as they enter the clinic.

**Burnt Orange**  
According to colorology theory, orange is used to heal the lungs and increase energy levels. It is a color that represents the sun and warmth. It is also the color of the red rocks, a landscape native to Arizona. This is the color we chose for areas of central focus, like how the sun is the center of our solar system and our sky. As a very sunny state, we have a key identity with the central star. It was the color of choice for our red rock-inspired material palette.

**Pale Green**  
Green is the color most associated with nature and life across cultures. Because of this, it is a calming color, which is why it is perfect for exam rooms. Many patients arrive nervous and anxious at the clinic. We aim to provide spaces that reduce that anxiety by using this color. The forest palette is represented by greens because it is the predominant color of that landscape, even in the dry climate of Arizona.

**Gray-Indigo**  
Colorology states that blue soothes illnesses and treats pain. Indigo is believed to alleviate skin problems. We chose it to be the color for our staff areas because indigo is a color related to devotion and helping others. It suggests fairness and impartiality and transmits wisdom and authority. Therefore, indigo-blue represents the goals of the medical providers. It is also the color of water, which ties it to the concept of oasis. The mountains surrounding Phoenix appear indigo which is why it is the key color of the mountains-inspired palette.

## DESERT ZONE

Warm neutrals and sun-washed tones reflect the openness of the desert landscape. Subtle texture and matte finishes create a sense of calm, grounding the space without visual heaviness.



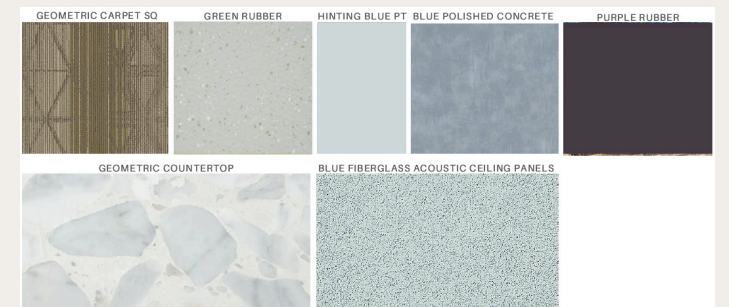
## FOREST ZONE

Muted greens and tactile surfaces draw inspiration from shaded landscapes. Softer contrasts and layered textures support a sense of retreat, restoration, and quiet focus.



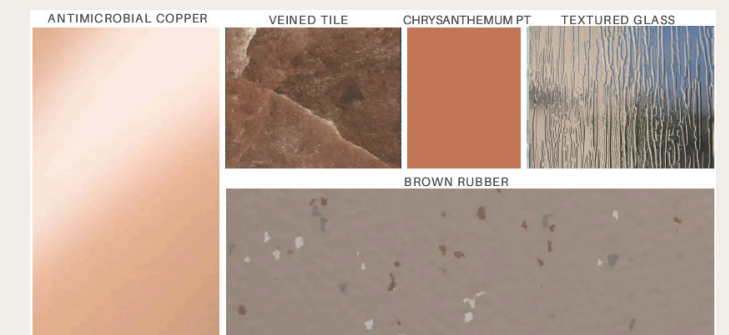
## MOUNTAIN ZONE

Cooler neutrals and refined textures reference elevation and clarity. Clean lines and restrained contrast create a composed environment that feels open, balanced, and restorative.



## RED ROCK ZONE

Deeper earth tones and layered materials introduce warmth and depth. These elements provide visual emphasis and orientation, evoking strength and stability through color and texture.



## SUMMER DREAM SPECS

This scheme embraces a bold yet approachable material language, pairing playful color with refined finishes. Organic forms, mid-century influences, and tactile textures create a lively but balanced environment. Furnishings are selected for comfort and durability while allowing expressive shapes and finishes to bring energy, warmth, and personality to the space.

**SUMMER DREAM**

Goal: A safe place for family and friends to gather where conversations spark and memories are made. A punchy palette combines playful patterns and sophisticated textures for a refreshing aesthetic. Soft and rounded forms create an open layout where all are welcome. Entertaining is a breeze with family-friendly pieces that allow for worry-free experiences and harmonious connections.

**Summer Dream Living Room**

Make use of any seat in the living area with this dark brown and marble side table.

Swivel around and into a conversation anywhere around you with this leather bar stool.

Light the island using this large pendant.

Add variety to the space with different works of art that highlight the area with subtle pops of color and interesting motifs. Different textures and materials help to bring interest to the area, leaving users to feel a sense of wonder.

Create an ambient environment for conversations or relaxation using a polished brass floor lamp.

Add texture to the kitchen with a crackle glazed ceramic and rattan tray.

Have an area to place or store items as well as allow those in the space to make use of the pull-out extension seats.

Spruce up the coffee and side tables with a woven catchall tray, beaded jute garlands and unique playful coasters.

Gather interest around special sculptures and vases.

**Summer Dream Living Room**

Imagine to make the most of the seating in the Living Room while maintaining a good flow and comfort for all, the larger curved sectional is perfect for the space.

To give an array of seating that is both comfortable and fun this Modernist yellow mesh chair allows the user to direct themselves to their area of interest at any given time to converse or simply lounge.

A colorful teal and blue rug with neutral tones helps to soften the space while adding a pop of color.

Colorful and patterned throw pillows in various sizes help to add dimension and life to the space in an exciting way.

Light up the conversation with this Edison table lamp.

Create a clean and relaxing entertainment space with a walnut TV stand that features leather doors and built-in shelving. Plenty of space to lock games, accessories or anything you may want out at all times!

Keep space open and flowing with a disc stool.

Beating the heat or creating a breeze can be done with ease using the Aerotech LED smart ceiling fan.

**Summer Dream Dining Room**

Get comfortable to dine with chairs and armchairs that feature luxurious upholstery as well as walnut backwood legs. A modern touch from a contemporary line that will bring natural colors into the space.

Make use of this elegant rectangular table that borrows elements of both mid-century modern and contemporary minimalism by its use of brass metal accents and a Scandinavian inspired top.

Bring organic forms into the dining area with this decorative centerpiece.

Add an element of refinement with a walnut wood and linen modern pendant light.

Keep track of time with a classic rattan wall clock.

Bring light to the bookshelf and the interesting items that reside there with this large yellow table lamp.

Decorate the bookshelf in the dining area with fun interesting objects of various colors and textures.

Worry less with the use of this easy care rug to help define the dining area.

Decorate the dining area with fun interesting objects of various colors and textures.

Elegant iron finishes for frames.

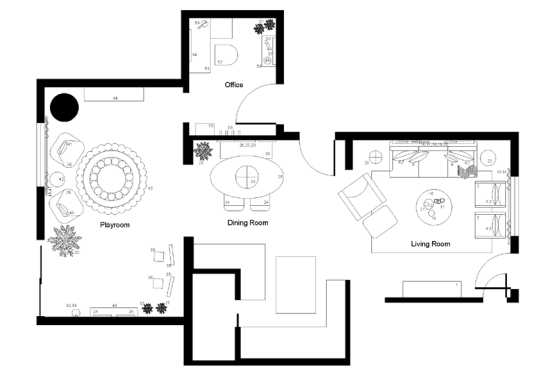
Add levels to the space with a large ceramic floor vase.

## NO PLACE LIKE HOME SPECS

Material and furniture selections blend mid-century modern influences with a relaxed, inviting sensibility. Warm woods, layered neutrals, and rich accent tones create a grounded foundation, while playful elements and soft textures keep the space light, airy, and welcoming. The result is a cohesive palette that feels both familiar and expressive.

**NO PLACE LIKE HOME**

Goal: A welcoming space that embodies a bohemian aesthetic where friends and family are invited to dinners and dance parties. An earthy color palette incorporates existing rich hues with calming neutrals to create a carefree environment. A thoughtfully curated design uses soft silhouettes and comforting textures that allows for an engaging family-friendly experience. Step into the home that you've been dreaming of!



**No Place Like Home Living Room**

1. Patterned consoles with texture add variation and a sense of play.

2. A cozy side chair adds a place of respite to the space.

3. Colorful throws add a sense of comfort and a pop of color in this unique, durable, and textured piece.

4-9. Decorative pillows help liven the space by adding colorful fun patterns, textures and shapes.

10-12. 21. Functionality and forms continue with fun pops of colors in thoughtful decor items on a beautiful bush tray!

15. Round out the entertainment space with a center item that helps to create an easy and natural flow for the space.

16. Natural wood shelving in a light color will allow other items on the shelf to be the focus!

17, 19-20. Feature a set of eye-catching artwork and natural elements while bringing in calming and serene colors, textures and patterns.

18. Choose your own art or familiar photos to fill this frame while bringing your personality to the design.

**No Place Like Home Dining Room**

23. Light up the space with a wood floor lamp featuring soft forms and a white shade.

24. Soft dining chairs will welcome users to the table and allow for long conversation.

25. A natural wood oval table will create a space for people to congregate while enjoying family meals.

26-28. Fun and vibrant colors draw your attention to the artwork of the space with rounded geometric forms.

29. Planters will help bring in greenery to brighten up the living space and make a stylish statement!

30. Bench seating on a side of the table increases seating capacity and makes the most of the space.

31. A large rattan pendant will bring city levels to the space for an ambient feel.

32. A durable and soft bean bag chair makes this a perfect piece to sit on and relax!

33. A large rattan pendant will bring city levels to the space for an ambient feel.

34. Provide space for accessories and drinks with a pop of color using this side table.

**No Place Like Home Living Room**

13.4. A macramé window curtain with a carved wooden rod invites the boho aesthetic and feel in through the window.

14. With storage built in this console combines utility with elegant textures that are sure to create an element of interest.

15. A large rattan pendant will bring city levels to the space for an ambient feel.

16. Natural wood shelving in a light color will allow other items on the shelf to be the focus!

17, 19-20. Feature a set of eye-catching artwork and natural elements while bringing in calming and serene colors, textures and patterns.

18. Choose your own art or familiar photos to fill this frame while bringing your personality to the design.

19. A durable and soft bean bag chair makes this a perfect piece to sit on and relax!

20. A large rattan pendant will bring city levels to the space for an ambient feel.

21. Functionality and forms continue with fun pops of colors in thoughtful decor items on a beautiful bush tray!

22. A side table brings utility and a pop of color in this unique, durable, and textured piece.

23. Light up the space with a wood floor lamp featuring soft forms and a white shade.

24. Soft dining chairs will welcome users to the table and allow for long conversation.

25. A natural wood oval table will create a space for people to congregate while enjoying family meals.

26-28. Fun and vibrant colors draw your attention to the artwork of the space with rounded geometric forms.

29. Planters will help bring in greenery to brighten up the living space and make a stylish statement!

30. Bench seating on a side of the table increases seating capacity and makes the most of the space.

31. A large rattan pendant will bring city levels to the space for an ambient feel.

32. A durable and soft bean bag chair makes this a perfect piece to sit on and relax!

33. A large rattan pendant will bring city levels to the space for an ambient feel.

34. Provide space for accessories and drinks with a pop of color using this side table.

35. Invite comfort or other playmates with stools that can be moved around.

36. Round out a space with a simple jute rug that adds texture to the playroom.

37. A light patterned window curtain with a carved wooden rod invites the boho aesthetic and feel in through the window.

38. Choose your own art or familiar photos to fill this frame while bringing your personality to the design.

39. A durable and soft bean bag chair makes this a perfect piece to sit on and relax!

40. A large rattan pendant will bring city levels to the space for an ambient feel.

41. Adding color and pattern to the playroom, this mix of pillows is pleasing to the eye!

42. Provide space for accessories and drinks with a pop of color using this side table.

43. A large rattan pendant will bring city levels to the space for an ambient feel.

44. With storage built in this console combines utility with elegant textures that are sure to create an element of interest.

45. Round out a space with a simple jute rug that adds texture to the playroom.

46. A light patterned window curtain with a carved wooden rod invites the boho aesthetic and feel in through the window.

# INSTITUTION CASE STUDY

CHILDREN'S MUSEUM OF PHOENIX - 2023

## CHALLENGE

Create an inclusive museum environment that supports accessibility, creativity, and intuitive movement for children and caregivers of varying abilities.



## RESPONSE

The design prioritized clear circulation, interactive zones, and tactile experiences—using spatial sequencing, exhibit integration, and material contrast to encourage exploration while maintaining safety and clarity.

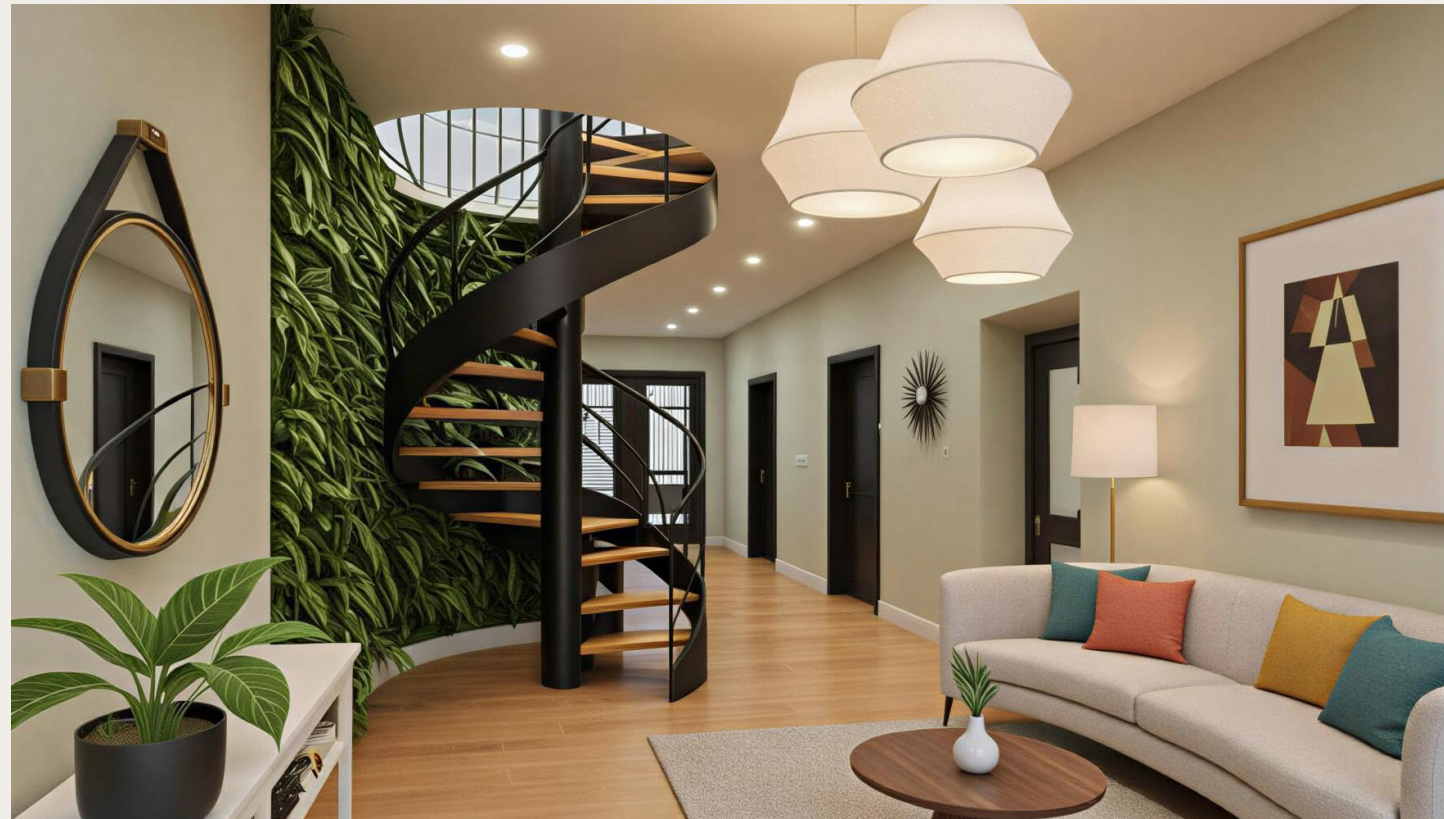
## IMPACT & OUTCOME

The museum becomes an exciting and engaging learning environment where play, discovery, and accessibility coexist seamlessly.



## CONTRIBUTION/ROLES

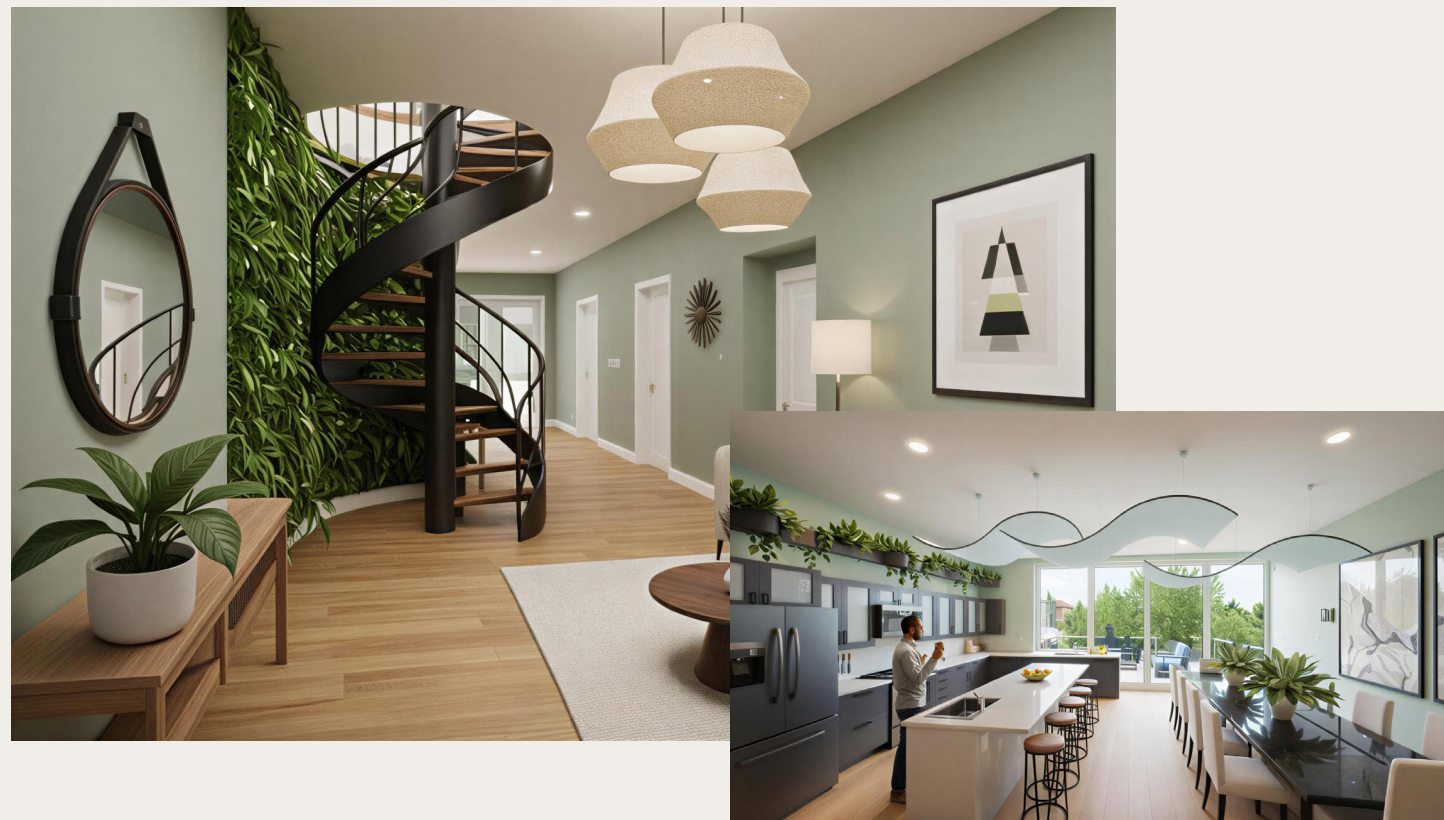
- Interpretation of RFP requirements and program goals
- Concept development focused on accessibility, learning, and play
- Spatial sequencing and circulation planning
- Exhibit and interaction zone design
- Accessibility-conscious layouts and user flow
- Material and color strategies supporting engagement and clarity
- Rendered plans, sections, and experiential visualizations
- Art and exhibit integration within architectural framework



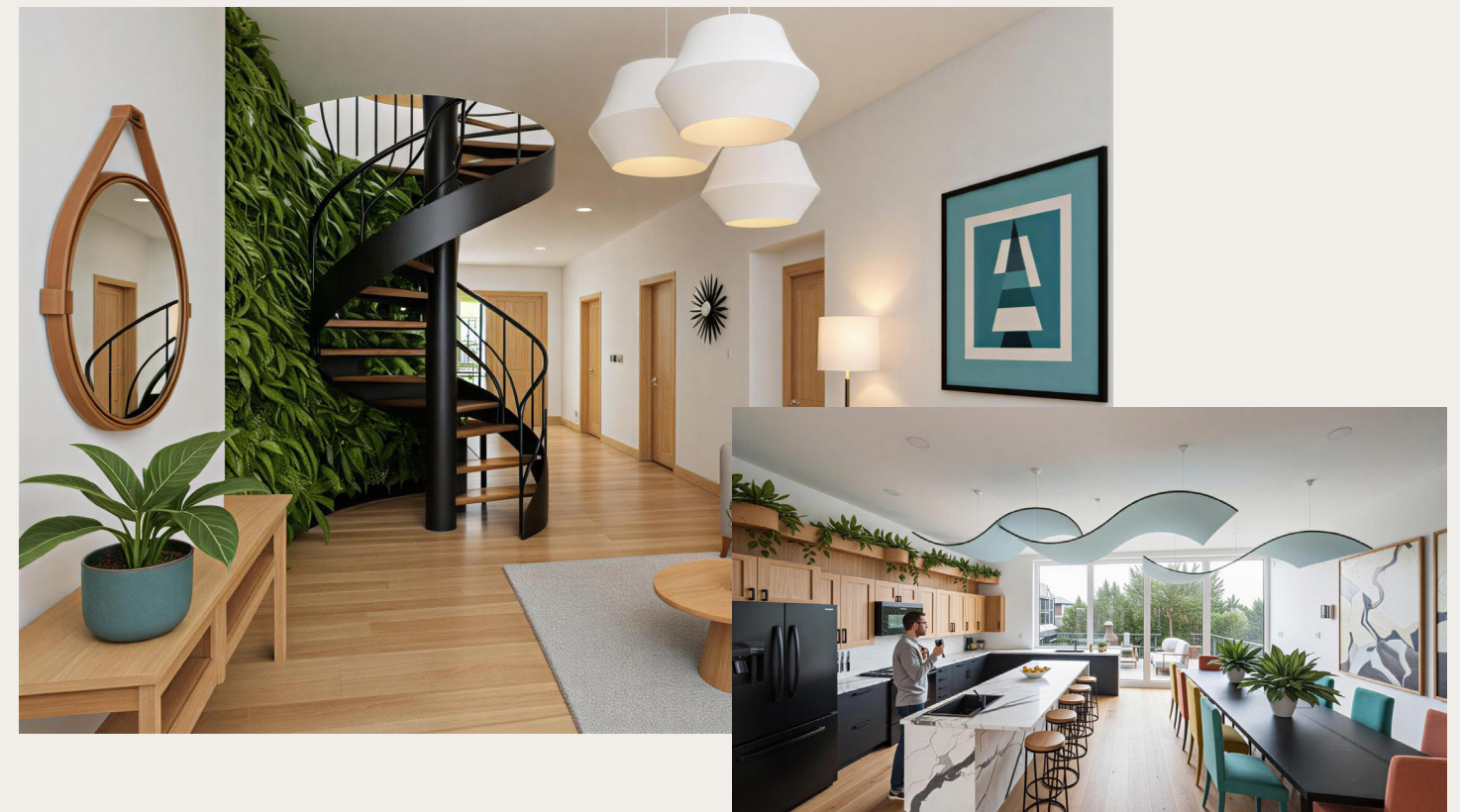
Entry Option 1/3 (Playful) | Residential | 2025



Kitchen (Playful) | Residential | 2025



Entry/Kitchen Option 2/3 (Neutral) | Residential | 2025



Entry/Kitchen Option 1/3 (Subtle Playful) | Residential | 2025



Entertainment Space | Residential | 2025



Condo Renovation | Residential | 2025



Bathroom | Residential | 2025



Bedroom Option 1/3 | Residential | 2021



Lobby | Mountain Park Health Center | 2023



MA Workstations | Mountain Park Health Center | 2023



Exam Type 1/5 | Mountain Park Health Center | 2023



Community Classroom | Mountain Park Health Center | 2023



Classroom/Entry/Retail | rUSE (Mix Use Space) | 2021



Coffee Bar | rUSE (Mix Use Space) | 2021



Convo Pit | rUSE (Mix Use Space) | 2021



Dining | rUSE (Mix Use Space) | 2021



Exterior Stacked Storage Containers | Navawool | 2021



Maker Space & Retail | Thrifty Tailor | 2021



Maker Space & Retail | Navawool | 2021



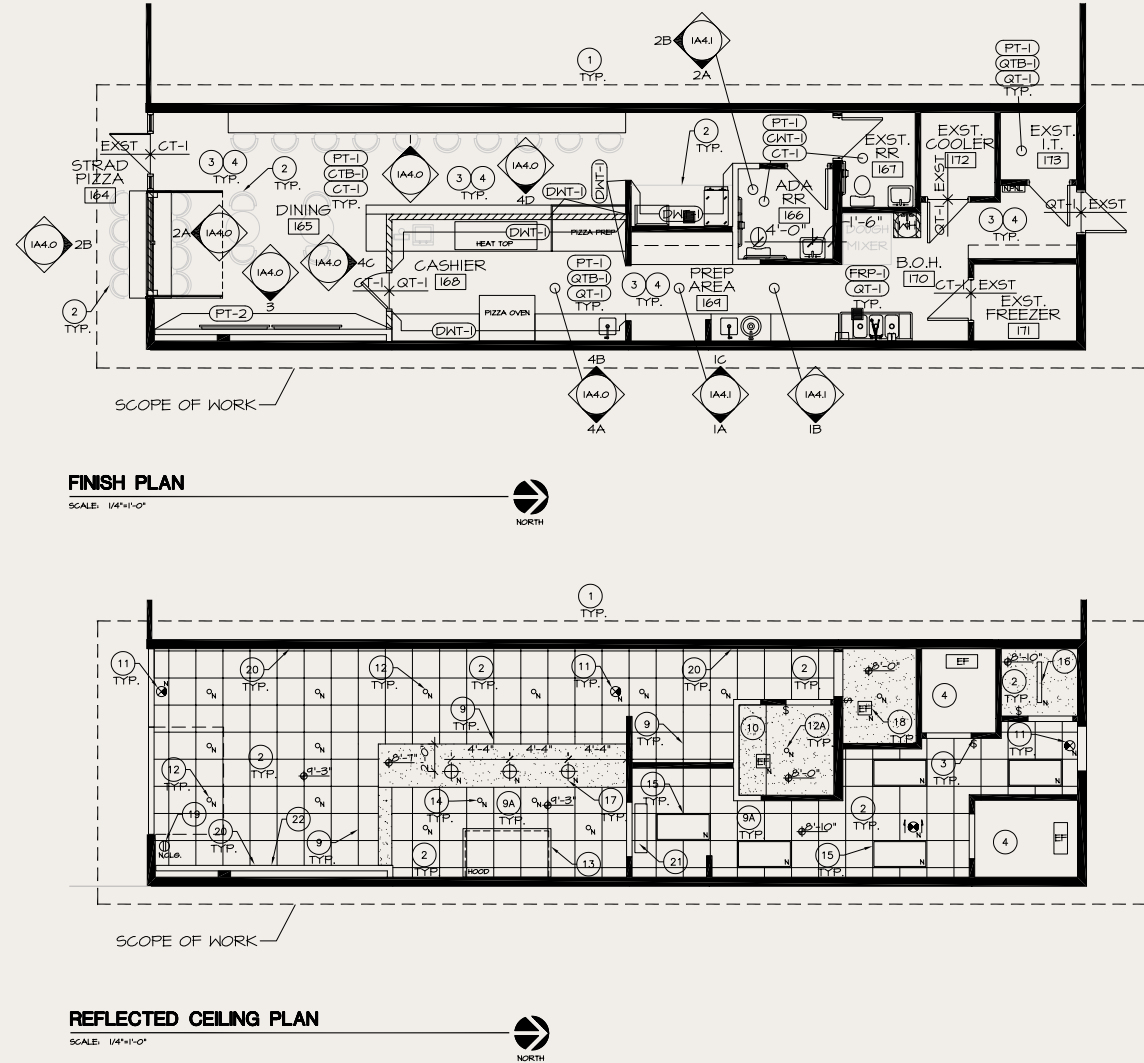
Art Studio | Children's Museum of Phoenix | 2023

# HOSPITALITY CASE STUDY

STRAD PIZZA - 2024/2025

## CHALLENGE

Create a bold, high-energy pizza concept that reflects a strong digital brand identity while navigating complex permitting constraints related to exterior access, outdoor dining, and a proposed building mural.

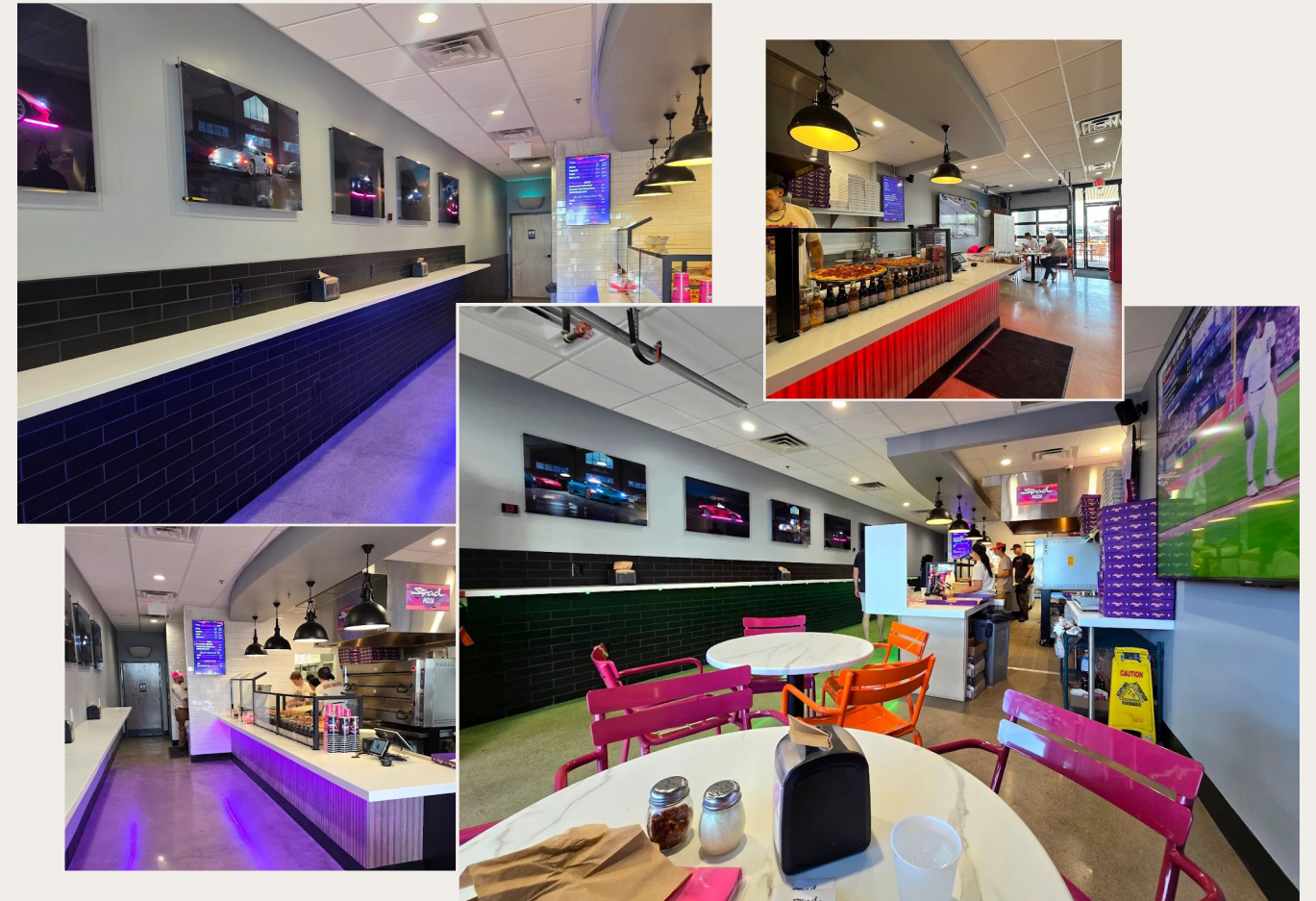


## RESPONSE

The design embraces vibrant color, neon accents, and playful material contrasts to create an energetic, brand-forward environment. Interior planning balanced guest flow, kitchen efficiency, and visual impact, while close coordination with the city and engineering consultants helped resolve challenges related to garage door operation, exterior seating, and mural approvals.

## IMPACT & OUTCOME

The final design delivers a highly recognizable, immersive dining experience that aligns with the brand's personality while meeting regulatory requirements—successfully translating a digital persona into a physical, community-oriented space.



## CONTRIBUTION/ROLES

- Client meetings and design coordination
- Site measurement, verification, and documentation of existing
- Space planning and customer circulation
- Material and finish selection
- Interior renderings and visual presentations
- Construction detailing and documentation
- City submittals, permitting coordination, and construction admin
- Consultant and engineering coordination

## CHALLENGE

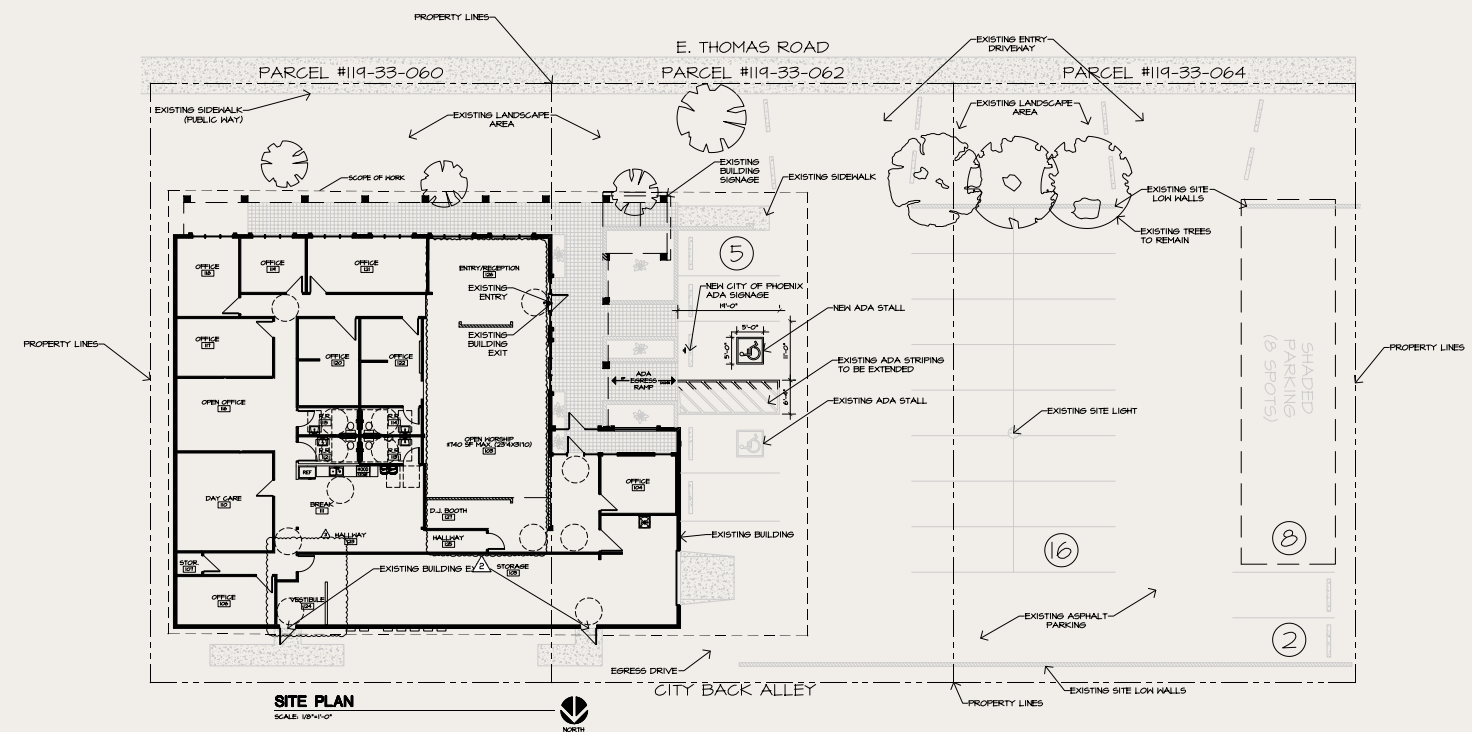
This project transformed an existing office and medical building into a multi-use church serving a diverse East Phoenix community. The design needed to support worship services, youth programming, administration, storage, and gathering spaces while addressing security concerns and preserving as much of the existing structure as possible. Significant coordination with consultants and city officials was required to navigate major HVAC, plumbing, and electrical upgrades alongside multiple rounds of permitting and code interpretation.

## RESPONSE

- Programmed worship, youth, office, storage, and gathering spaces
- Reused existing walls and structure to minimize demolition
- Coordinated full HVAC, plumbing, and electrical system upgrades
- Addressed security concerns through layout and zoning strategies
- Navigated city submittals and evolving code interpretations

## IMPACT/OUTCOME

- Flexible environment supporting worship, outreach, and community events
- Improved building performance through updated mechanical systems
- Reduced construction waste through adaptive reuse
- Successfully approved project despite complex permitting challenges



## CONTRIBUTION/ROLES

- Space planning and multi-program zoning
- Coordination with mechanical, electrical, and plumbing engineers
- Construction documentation and detailing
- City submittals and permitting coordination
- Code research and interpretation support
- Construction administration and site coordination



## CHALLENGE

Brightmont Academy required an expansion to accommodate a wide range of educational needs, including classrooms, quiet learning areas, science rooms with specialized equipment, and spaces for after-school activities. The design also needed to ensure safe egress, ADA compliance, and a seamless connection to an adjacent existing unit. The breakroom was repositioned as a central hub to anchor circulation and improve daily interaction between students and staff.

## RESPONSE

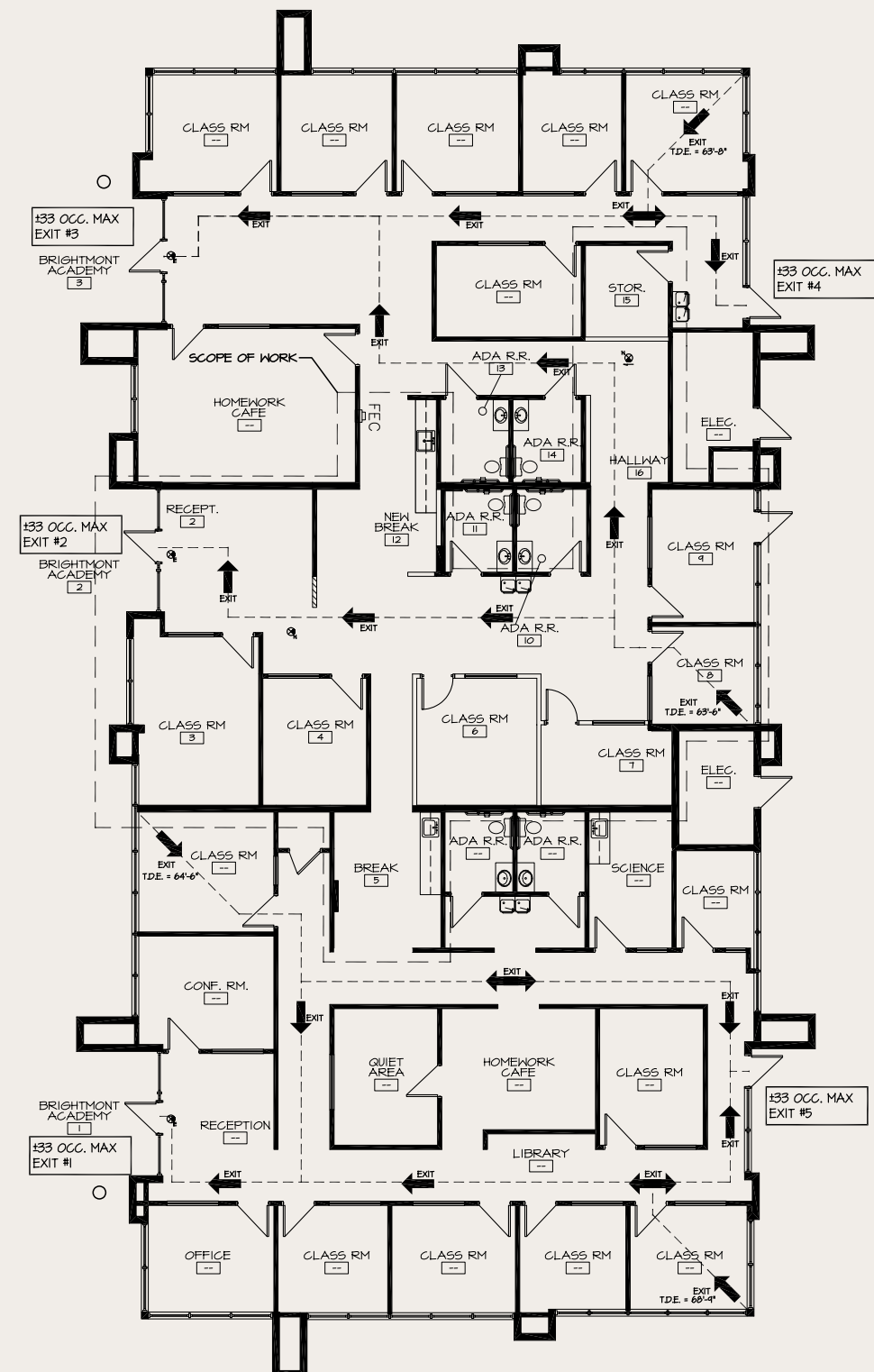
- Designed classrooms, quiet rooms, science labs, and support spaces
- Integrated specialized equipment requirements into planning
- Refined circulation and egress for safety and clarity
- Upgraded restrooms to meet ADA requirements
- Repositioned the breakroom as a central organizing element

## IMPACT/OUTCOME

- Learning environment that supports diverse learning styles and needs
- Clear circulation improves supervision and daily operations
- Increased accessibility for students and staff
- Cohesive expansion that feels integrated rather than added-on

## CONTRIBUTION/ROLES

- Educational space planning and programming
- Accessibility and egress coordination
- Space planning across new and existing units
- Construction documentation and detailing
- Consultant coordination
- Permitting and city review support



**FIRE AND LIFE SAFETY PLAN**  
SCALE: 1/4"=1'-0"  
NORTH

## CHALLENGE

Bowls & Brews, a café and acai bowl concept adjacent to Strad Pizza, required a complete interior refresh and revised service flow while maintaining a strong connection to its outdoor patio. The project faced extensive city review related to operable openings, patio designation, accessibility, noise, and use restrictions. Additional site and area research was required to support approvals while preserving the client's vision for an open, community-oriented café.

## RESPONSE

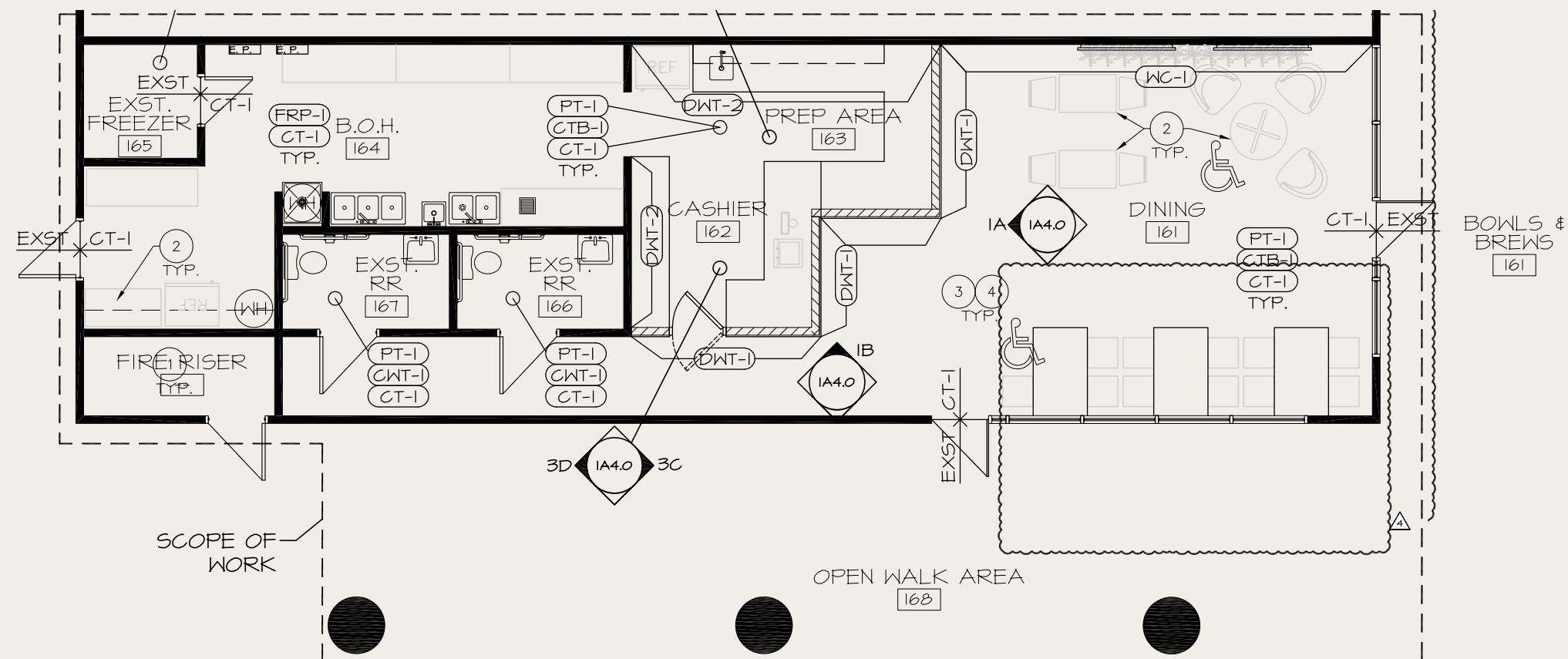
- Developed a revised space plan and service workflow
- Integrated specialized food service equipment
- Updated fixtures, finishes, and furniture selections
- Conducted site and contextual research to support city approvals
- Coordinated ADA, enclosure, noise, and use requirements

## IMPACT/OUTCOME

- Code-compliant indoor–outdoor café experience
- Improved customer flow and service efficiency
- Maintained patio activation within regulatory constraints
- Strengthened brand presence through a refreshed interior environment

## CONTRIBUTION/ROLES

- Client meetings and design coordination
- Site visits, measurements, and field verification
- Space planning and service flow development
- Material and finish selection
- Equipment coordination and layout integration
- Code research and permitting coordination
- Construction documentation and administration







Clubhouse/Leasing | The Franklin | 2024



Clubhouse | The Franklin | 2024



Clubhouse | The Franklin | 2024



Clubhouse Kitchen | The Franklin | 2024





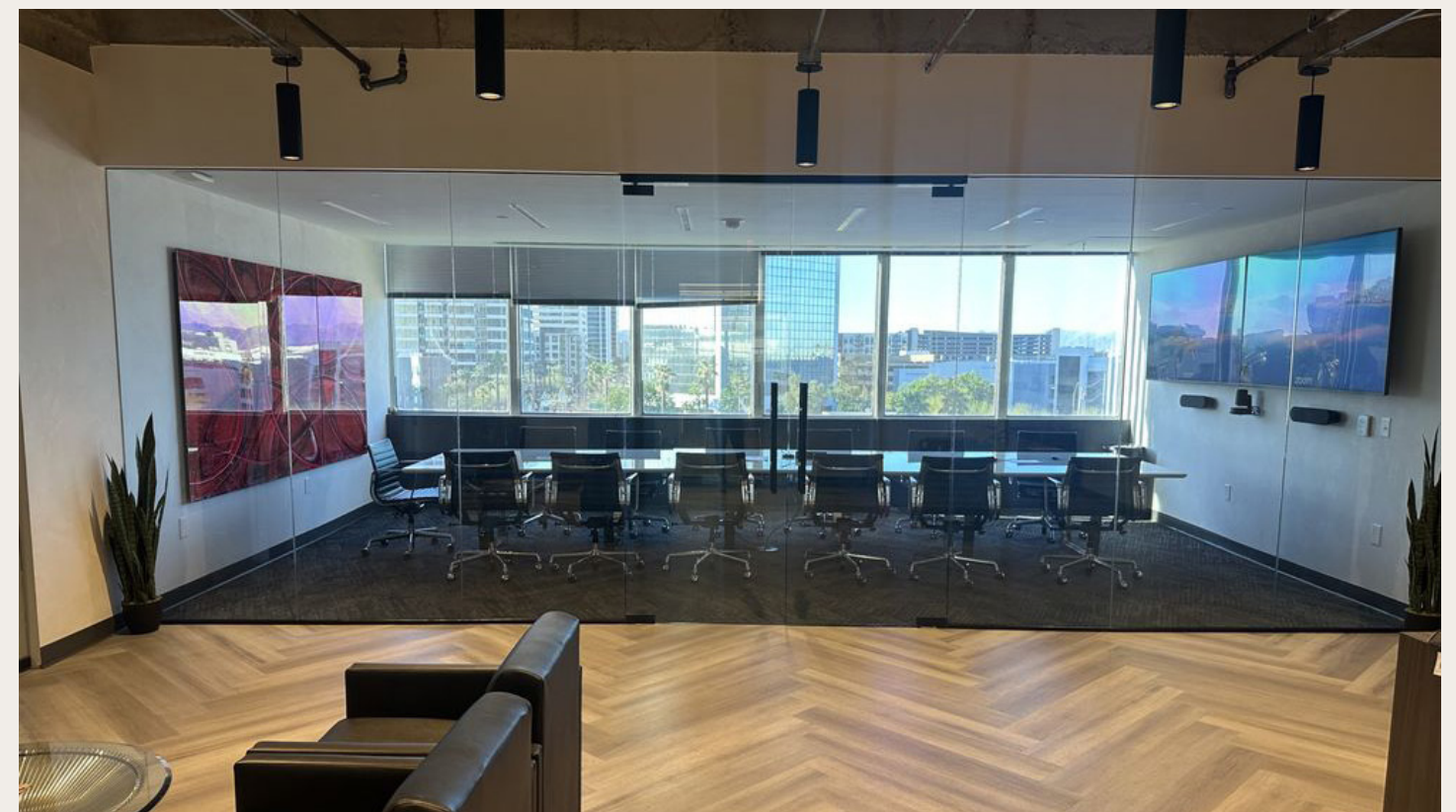
Suite Entrance | Big Auto Accident Attorneys | 2025



Waiting to Signing Room | Big Auto Accident Attorneys | 2025



Lobby/Waiting Room (Custom Reception) | Big Auto Accident Attorneys | 2025



Main Conference Room | Big Auto Accident Attorneys | 2025



Lobby/Co-Working | Fuze Flex Space | 2025



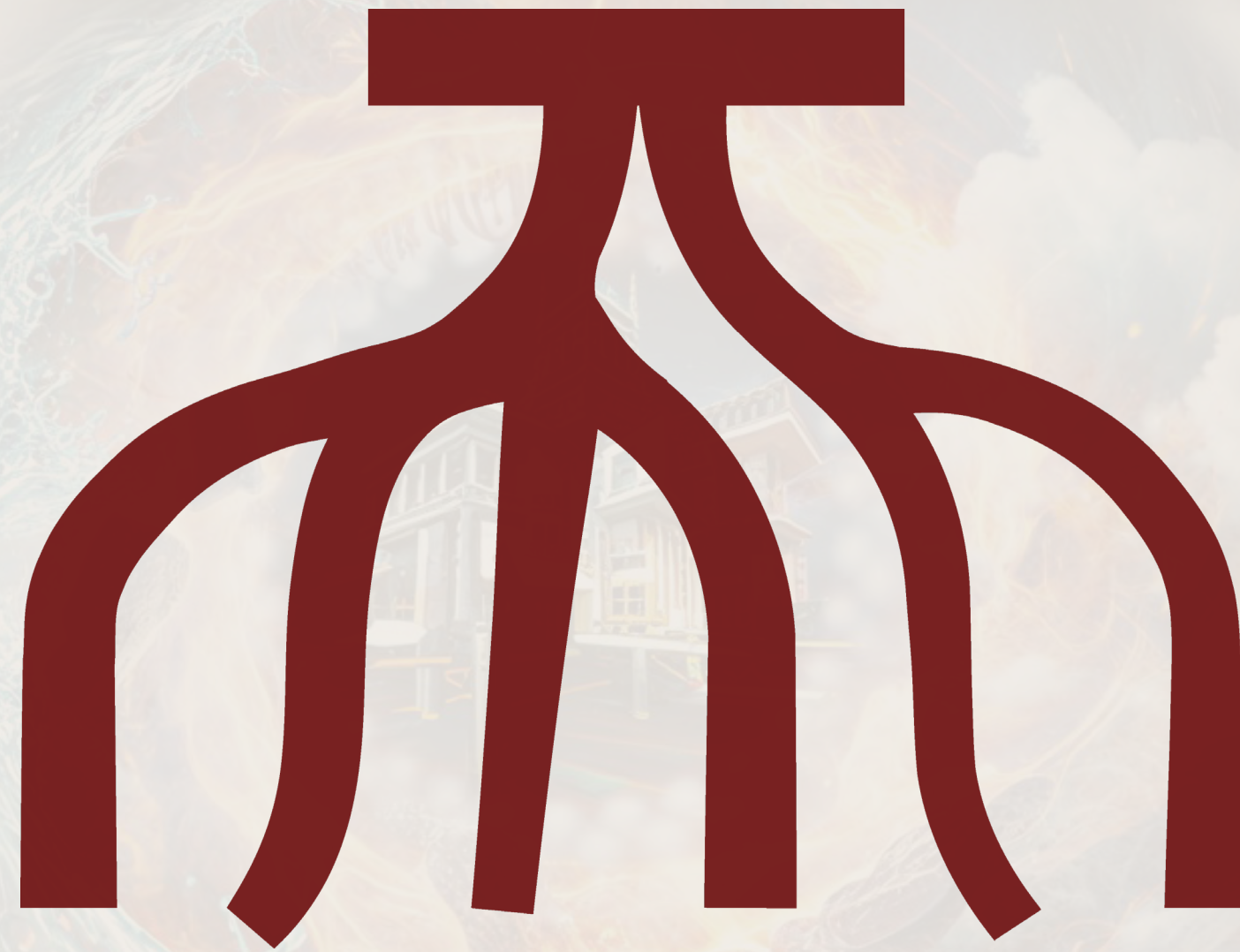
Main Conference/Training | Fuze Flex Space | 2025



Conference Room | Fuze Flex Space | 2025



Huddle Room | Fuze Flex Space | 2025



# THANK YOU

**I APPRECIATE YOUR INTEREST AND TIME, FEEL FREE TO REACH OUT!**

---

Best, Lance M. Gillespie | (480) 267 - 7405 | [lancepmg@gmail.com](mailto:lancepmg@gmail.com)