

INTERIOR DESIGN 25'

PORTFOLIO

IMANI ALETHIA



CONTENTS

01 AMI

02 OAC

03 Project Green

04 Sanofi

05 ID.me



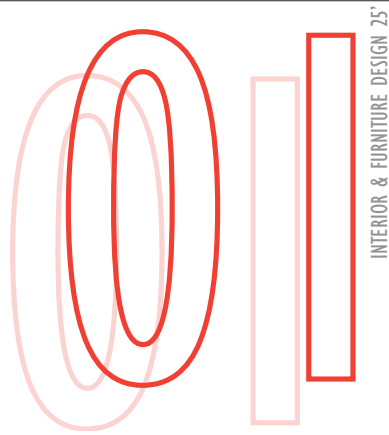
ABOUT ME

Diversity in Imani Alethia's culture, experiences, and travel drive my design perspective. Alethia as a designer plans on being impactful. Impacting the world through bold and exciting design. Impacting the Earth positively. Transparency and innovation is the key to her design style. Imani Alethia strives to feed the design desire of any consumer while remaining true to her design values.

I hope you enjoy my creations as you look in my window of passions.

PROJECT BACKGROUND: AMI

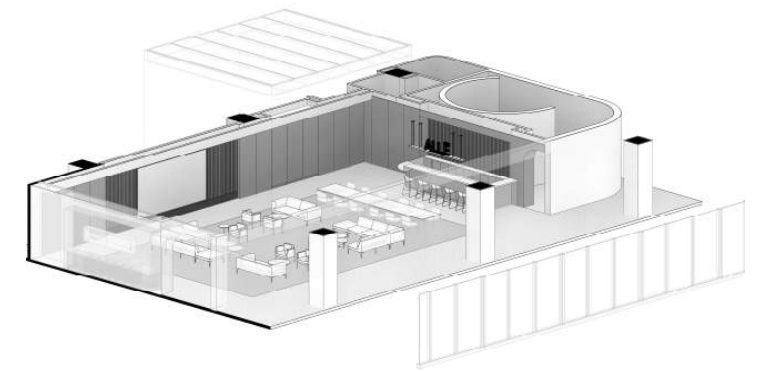
Allergen Medical Institute - Atlanta (AMI-ATL) is the second of its kind. This new workplace combines experiential design, workplace, and medical education. This institute trains beauty professionals in a series of high end luxe hospitality inspired treatment rooms. The rest of the space follows suit with custom everything from paint to Venetian plaster to custom made glass. The job was simple create a timeless unforgettable space where professionals will thrive and test subjects will have jaw dropping memories.



INTERIOR & FURNITURE DESIGN 25'



Original Render By Fictional Pixel

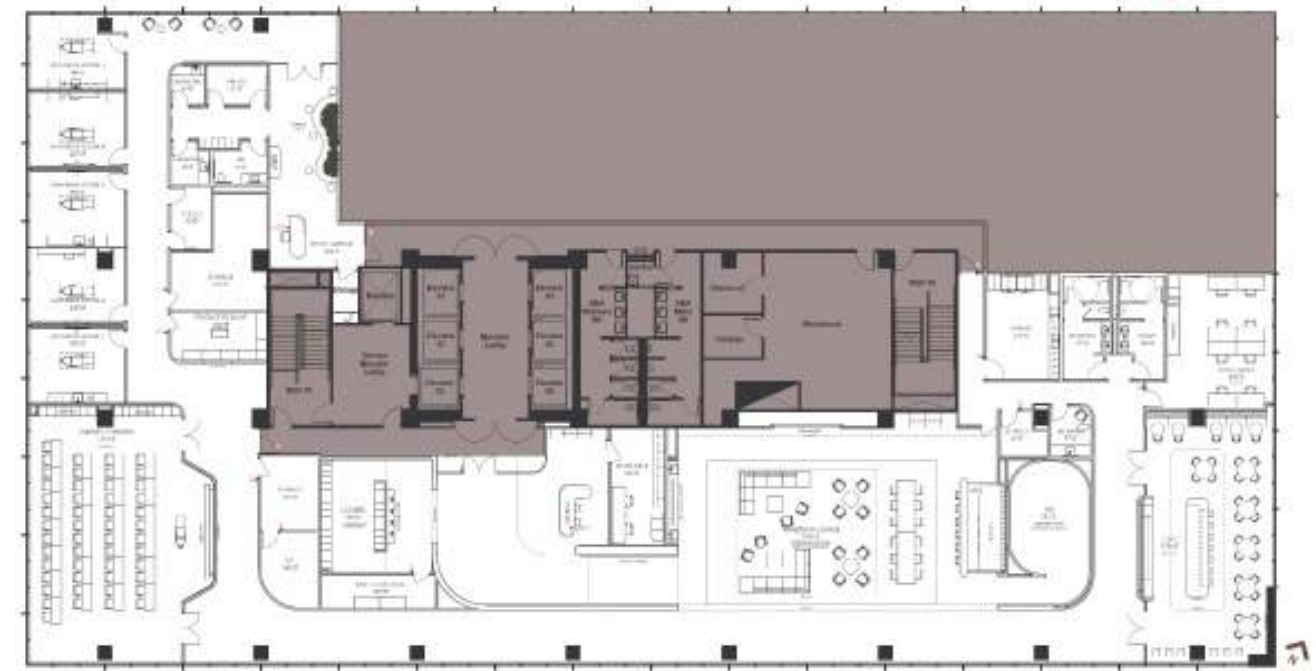


AMI-ATL is a project that came predesigned. It was my job to copy the KIT of parts into this space. I created the model of the exterior, core and shell, 3D views, axons, elevations, floor plans, and coordinated the materiality.



IMANI ALETHIA

Original Render By Fictional Pixel



FLOOR PLAN



Original Render By Fictional Pixel

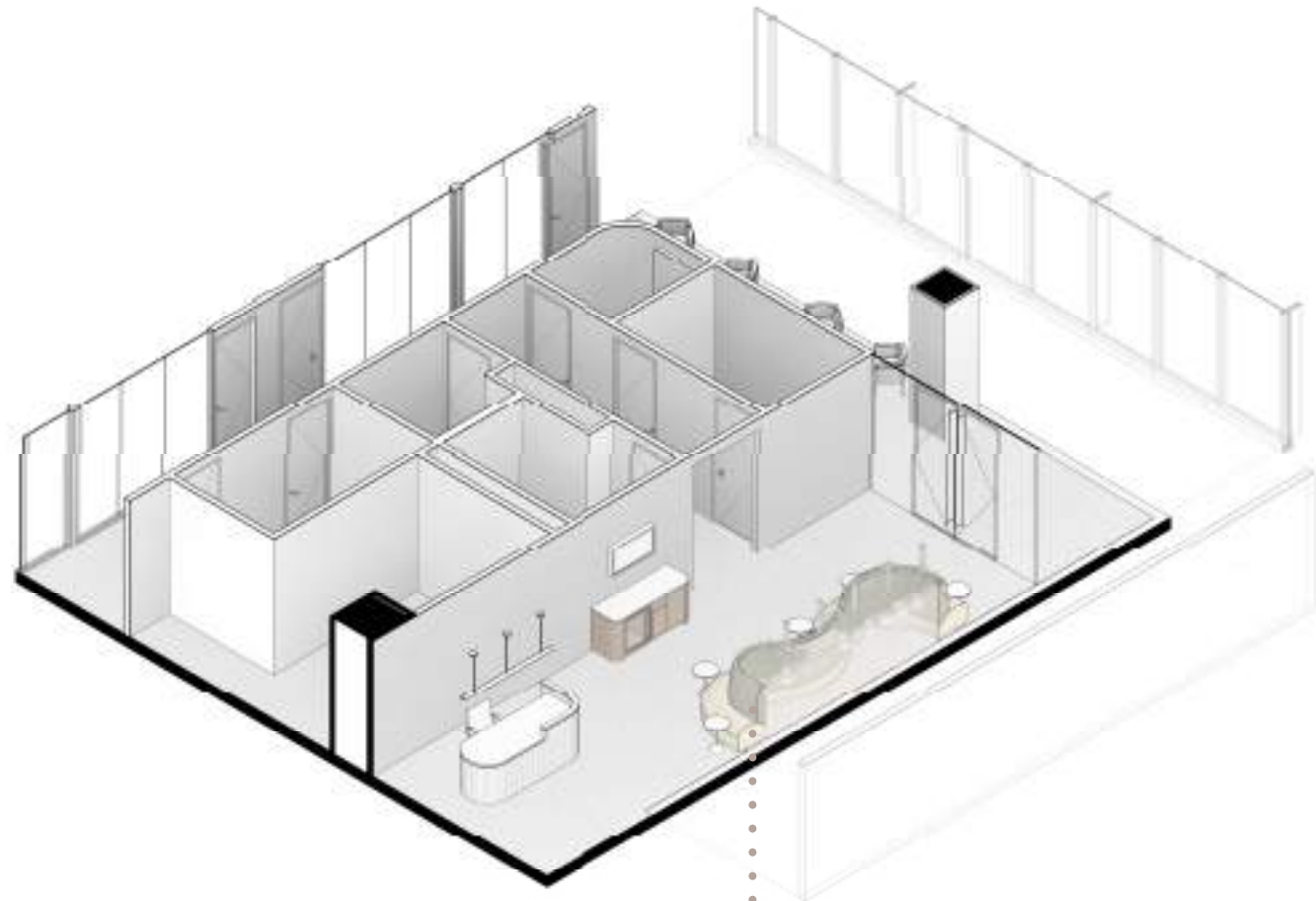


Original Render By Fictional Pixel

AMI



MODEL ARRIVAL



Axon Drawing - Model Arrival

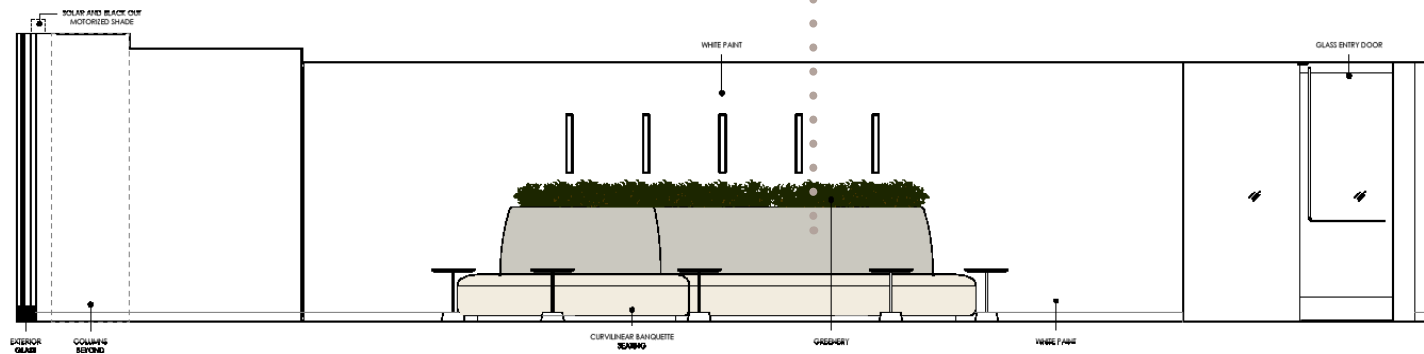
Imani Alethia had the opportunity to design this curvilinear banquette combined with a planter. Alethia hoped the design would give the space some greenery as well as an interesting sought after "IG Moment."



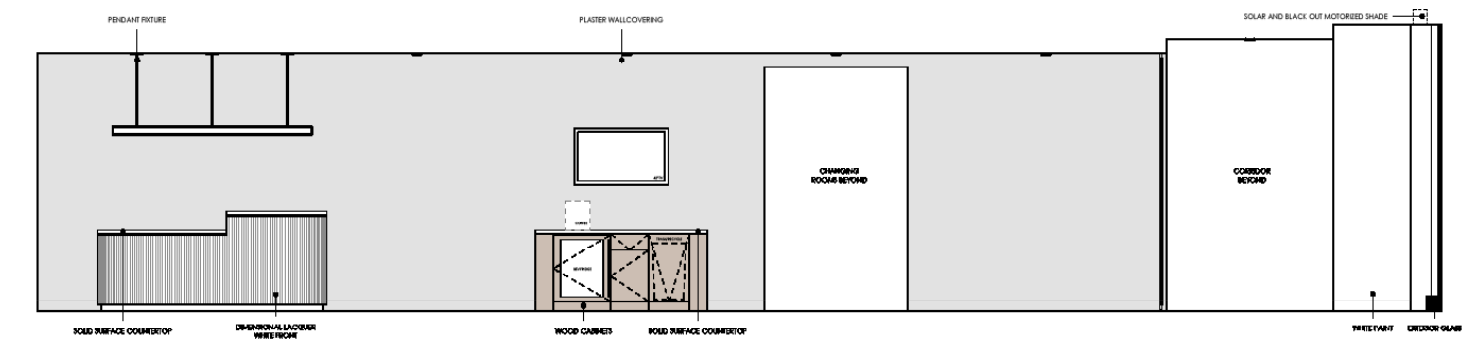
Materiality



Original Render By Fictional Pixel



Model Arrival - Seating Area Custom Furniture Design by Imani Alethia



Model Arrival - Reception Area

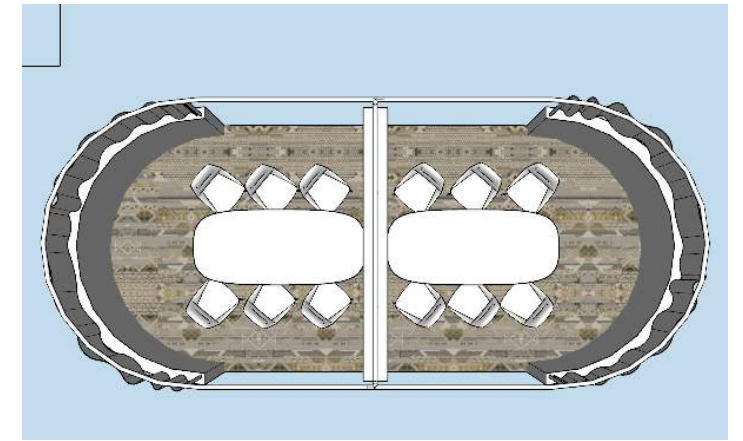
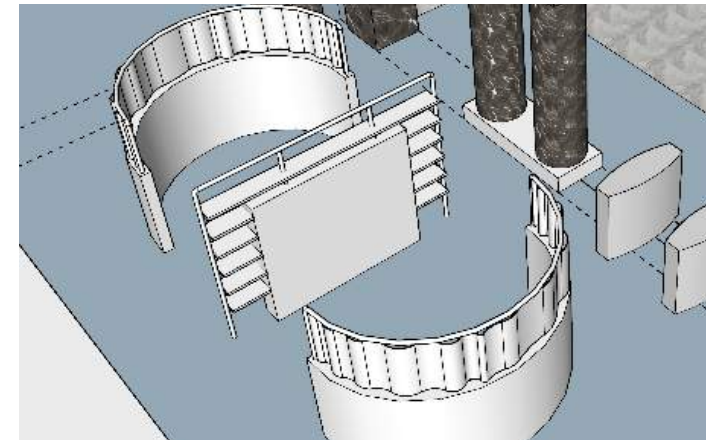




Original Photograph By Imani Alethia



INTERIOR & FURNITURE DESIGN 25'



PROJECT BACKGROUND: OAC

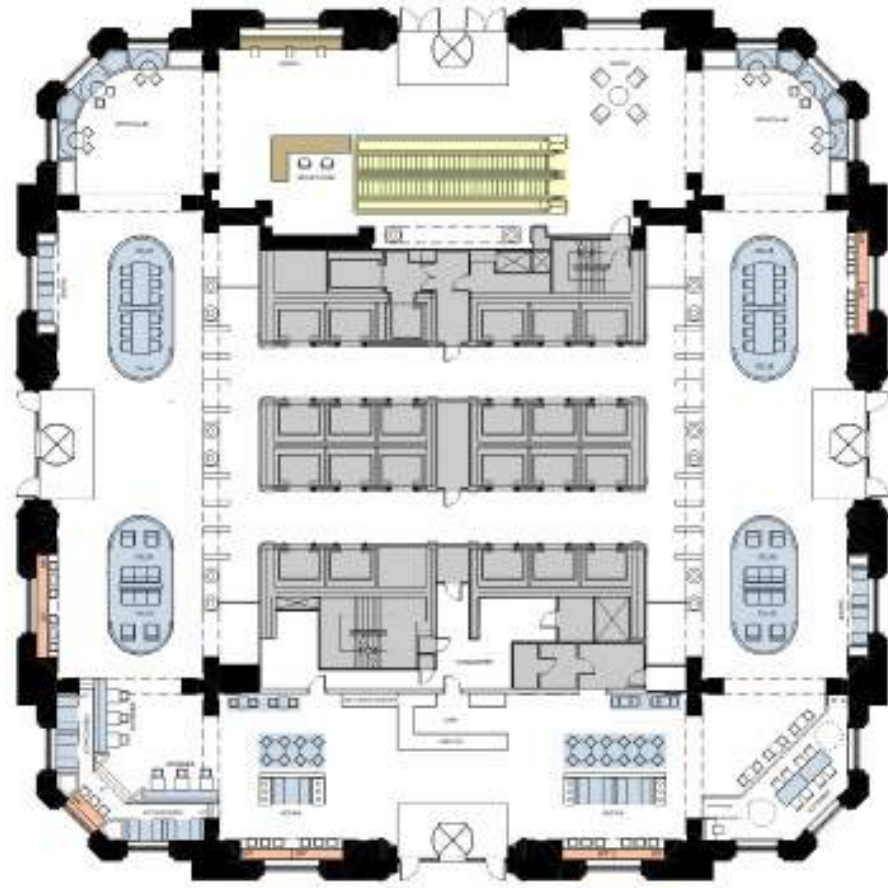
One Atlantic Center is an iconic member of the Atlanta skyline. HOK was tasked to create a re-visualization of landscaping, additional building, exterior signage, and interiors of the amenity spaces. OAC was an interview proposal where Alethia was in charge of the design for collaborative spaces and modeling of the core.



IMANI ALETHIA

OAC

Alethia explores the design of the open collaboration area via Sketchup & Enscape.



Plans made in illustrator by Imani Alethia. Upon completion she exported them as a cad format then placed into SketchUp. In Sketchup Alethia was in charge of modeling the core of the building and a college made the exterior. Alethia did help with the window part of the exterior shell. Majority of the areas in blue except the far south part of the plan was modeled and created by Alethia.

The lobby entry lights and railings were modeled by Imani Alethia (render,1). The flooring in the cafe in the far south plan was modeled by Alethia (render,2).

GROUND LEVEL OAC



Imani Alethia creates CAD drawings of Lower Level in Illustrator. Alethia transfers the CAD into Sketchup creates the circulation highlighted in yellow. Imani Alethia creates and adds the materiality to the SketchUp to be translated into Enscape. Alethia created drafted views, then renders the selected views.

LOWER LEVEL OAC



1- ENTRANCE INTO OAC BUILDING



2 - CAFE SEATING AREA



3 - GAMING AREA 1



4 - GAMING AREA 2



Original Photograph By Charlie Gray



INTERIOR & FURNITURE DESIGN 25'

PROJECT BACKGROUND: PROJECT GREEN

Imani Alethia will create a sustainable product for Stella McCartney x Lenovo collaboration using waste. We will explore through drawing, model making, and digital design. Then we will present the final products completed in 2D hand sketches and 3D renders. The goal is to combine Stella's love for sustainability and Lenovo's love of technology.

Collection For Display will explore using plastic waste to make retail store essentials. Benches, mirrors, and changing room stools will be the focus pieces. These pieces will all be inspired by Stella's love for nature. The objective is to be regenerative in our design. Closing the plastic loop in the best design way possible is the core goal.

*I designed this project under Stella McCartney and Lenovo. I was given a brief to intersect fashion and technology. I was responsible for concept to final presentation. I these furniture items from start to finish. I was also apart of the marketing campaign for the project.

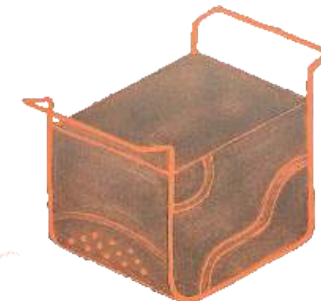
IMANI ALETHIA

PROJECT GREEN

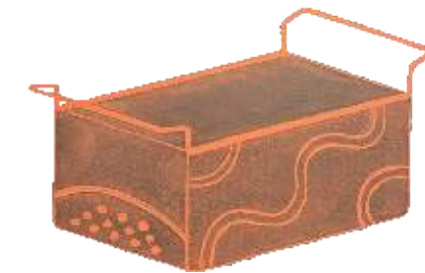


FOR DISPLAY

For Display is sustainable retail furniture initiative. The pieces of focus are a stool, bench, swing, and light rack. These pieces are to be staple components for an imagined re-vamp of Stella McCartney's Bond Street store.



DRESSING ROOM STOOL



RETAIL SPACE BENCH



3D SKETCH MODEL FOR RETAIL BENCH



INSTAGRAM MOMENT SWING



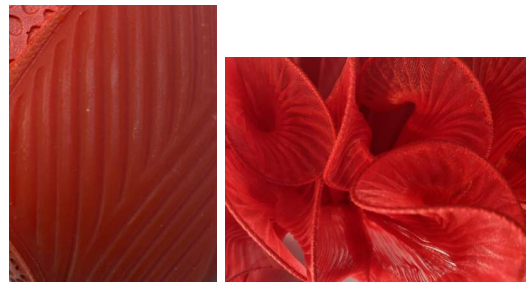
CLOTHING RACK LIGHT

The For Display collection uses Stella McCartney's dismembered plastic shoes as the main resource. The shoes and other elements from McCartney's stores, office, and apparel serve as texture inspiration. The 3D model below is the manifestation of the ability to upcycle McCartney's non-functional shoes.





Recycled Plastic Source

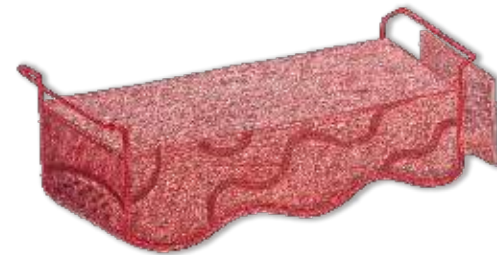


Texture Mood Board For Display



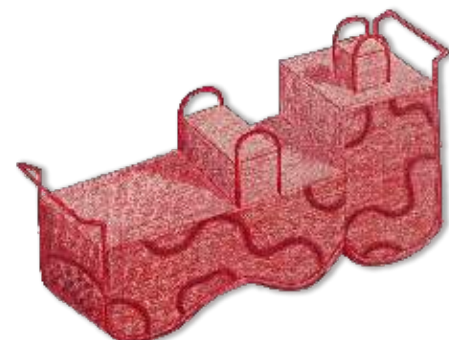
DRESSING ROOM STOOL

Dressing room stools are usually last minute design pieces that are usually ugly and often unpleasant to sit on. This stool imitates that sole of the shoes for the seat, which brings in comfort. While the exterior appearance is of the outside of a shoe. This gives it a visual allure that makes users want to experience.



RETAIL SPACE BENCH W/ STORAGE

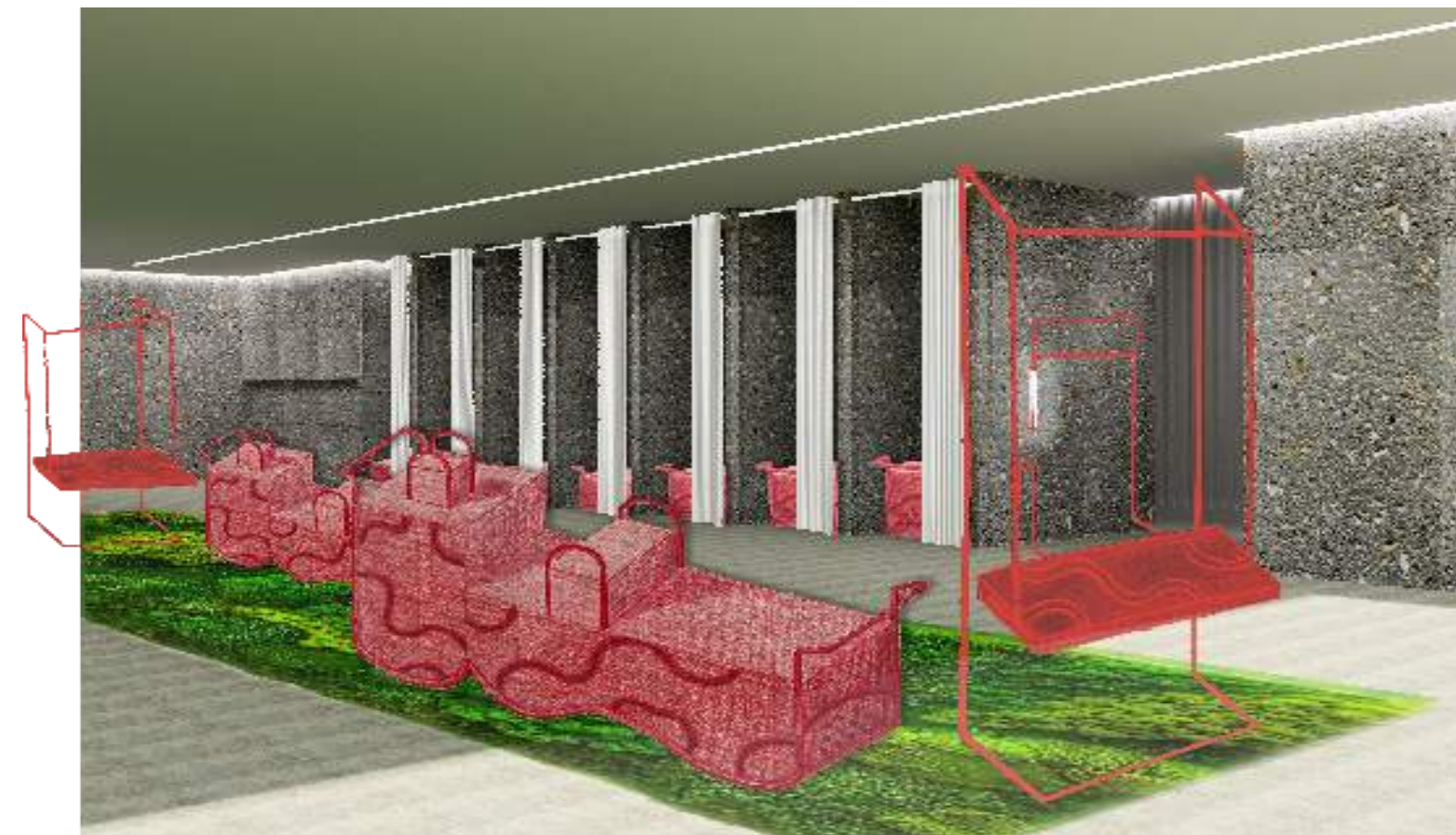
The design of the bench evolved from the 3D sketch of the bench from Stella McCartney's shoes. This version of the bench comes with storage on both sides that allow it to be functional for a retail space. The cool patterns from the shoe allow it to be tactile and visually appealing for an enhanced shopping experience.



RETAIL SPACE DISPLAY W/ STORAGE

Display cases are usually rigid and metal structures that look like a gitty loft in NYC. The display stand adds levels that stack the shoe-like texture, giving the eye an intriguing trail to follow. Also, the different heights serve with function, allowing smaller things to be higher and closer to the eye.

Lenovo's Yoga computer was able to run Revit, Photoshop, and InDesign. The computer was powerful, efficient, and well equipped to get a designer's job done. In tablet mode I was able to clean up sketches with ease in Photoshop. In laptop mode the computer was able to run Revit on desktop level speeds which allowed the mock up of Stella McCartney's Bond Street store to go smoothly.





Original Photograph By Imani Alethia

04

INTERIOR & FURNITURE DESIGN 25'

PROJECT BACKGROUND: SANOFI

This multi-national pharmaceutical manufacturing firm, is consolidating several existing research, development and administrative facilities in Massachusetts to create a premier life sciences campus.

The campus is in a new development area known as outside of Boston. The is located adjacent to Kendall Square and is a 43-acre transit oriented, mixed-use development located outside of Boston, Massachusetts. The campus constitutes two built-to-suit buildings referred as Building G and Building H. The primary use of Building G is for research and development and Building H will be administrative with amenities to be shared by all employees.

* I designed this project under HOK. I was apart of a 3 person design team. I was responsible for some amenity spaces. I designed the Mirco Market in building G. In building H I designed the Servery, Dining Room, Gym, Collab Zone, Tech Bar, Health Center. I co-designed the Conference Center, Conference Center Waiting Area & Lobbies.*

IMANI ALETHIA

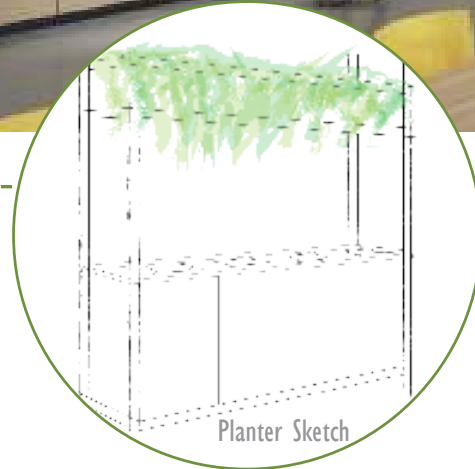
SANOFI



CITY:
Boston
STATE:
MA
DISTRICT:
Cambridge
HEADQUARTERS:
France
SQ FT:
1 Million
FLOORS:
22
ARCHITECTS:
Perkins + Will | NBBJ
INTERIOR DESIGNER:
HOK : Imani Alethia (Alex Barrera | Jeanette Chang)
EXPECTED OPENING DATE:
August 2021



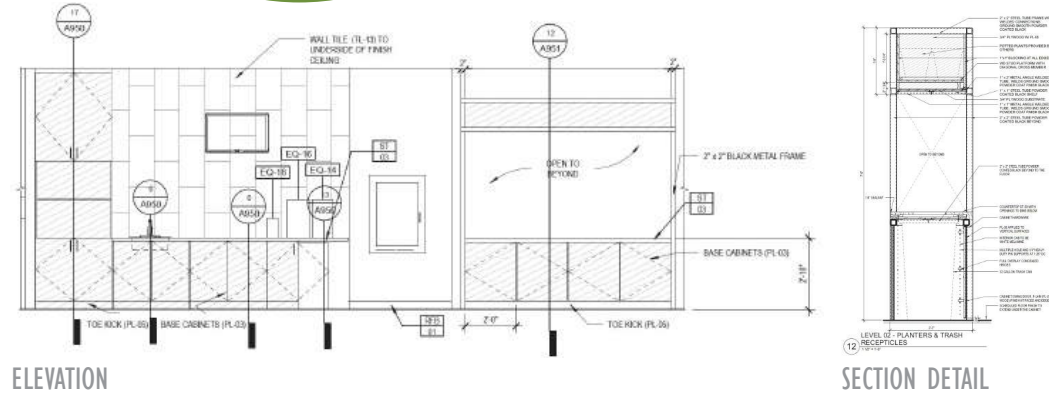
Rendering by Quantum Space Studio



Planter Sketch

TECH BAR + SEATING

The tech bar is to the left image above. There is a frame structure with openings. The top opening on the structure is planters and the bottom openings are for trash/ recycling. The top of the image shows a hanging planter with lights coming out of it. To the right of the page metal enclosures to house booth seating.



ELEVATION

SECTION DETAIL



H - Level 02 Finish Plan

04



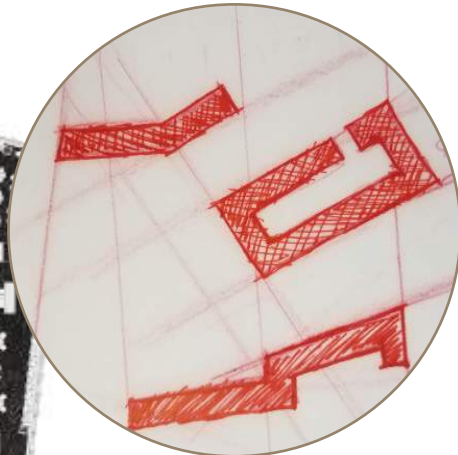
H - Level 09 Finish Plan

SERVERY + DINING

Nautical Nantucket is the vibe for the servery. The theme was originally carried to the dining room (Option 1 to the right) but the client asked for a more adventurous palette (Option 2 to the right). Chevron ash-wood tile is placed for the a light airy look with visual interest. The finishes of the servery imitates the all white kitchens of the beach house of Nantucket. Adding lighting on the bottom of the counter for brighter effect to feel like the sun's rays on the beach.



Nautical Nantucket



Servery Layout Sketch



Rendering by Quantum Space Studio

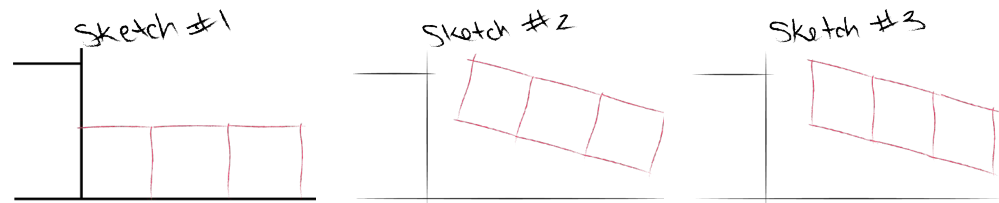
04

COLLAB ZONE

100 CD Renderings



Sketches + Plan



Revit Variations



Rendering by Alex Barrera

04

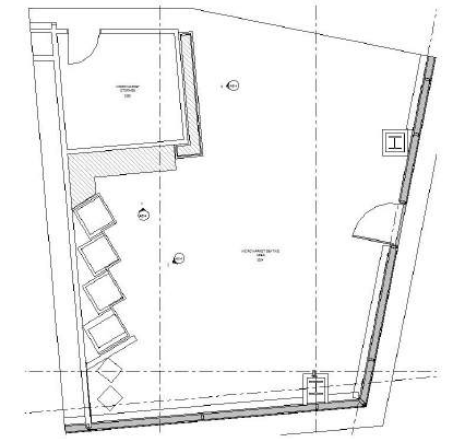
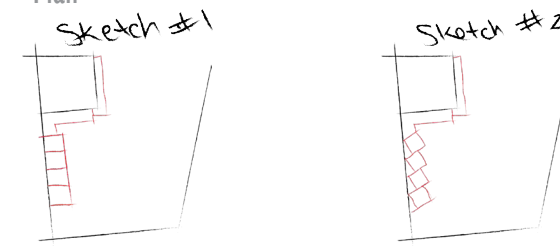


Rendering by Quantum Space Studio

MICRO MARKET

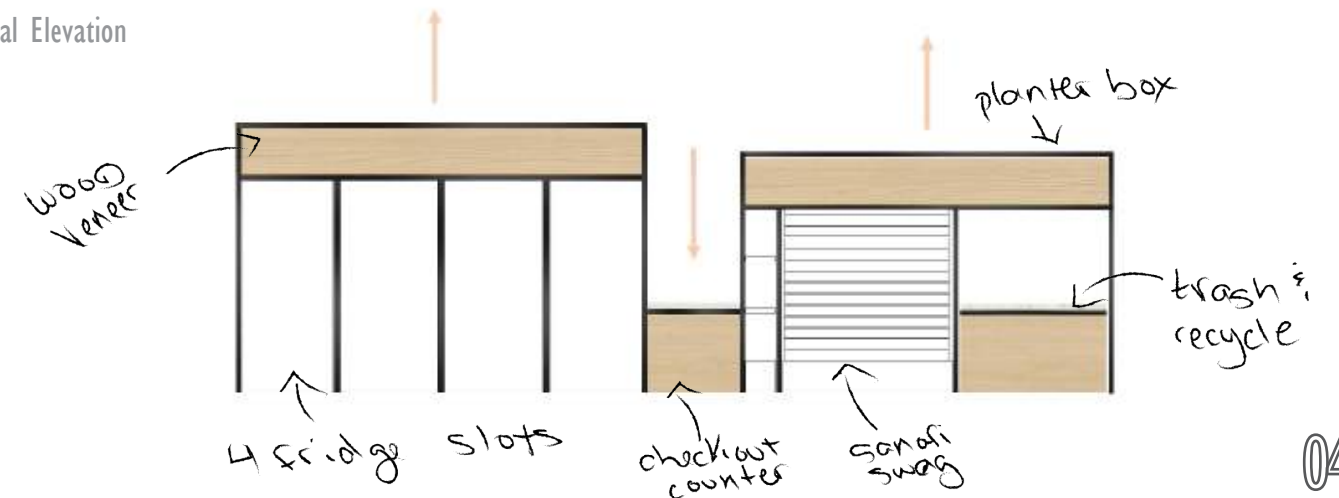
The idea behind the micro market is to imitate a convenience store. This client wanted a self service upscale version of 7/11. Here at the 7/11 styled market snacks, drinks, soups, salads, sandwiches, and client swag will be sold. There are cameras to monitor employees when making purchases.

Sketches + Plan



Enlarged Plan Level 03: Micro Market

Material Elevation



04



Original Photograph By Imani Alethia

05

INTERIOR & FURNITURE DESIGN 25'

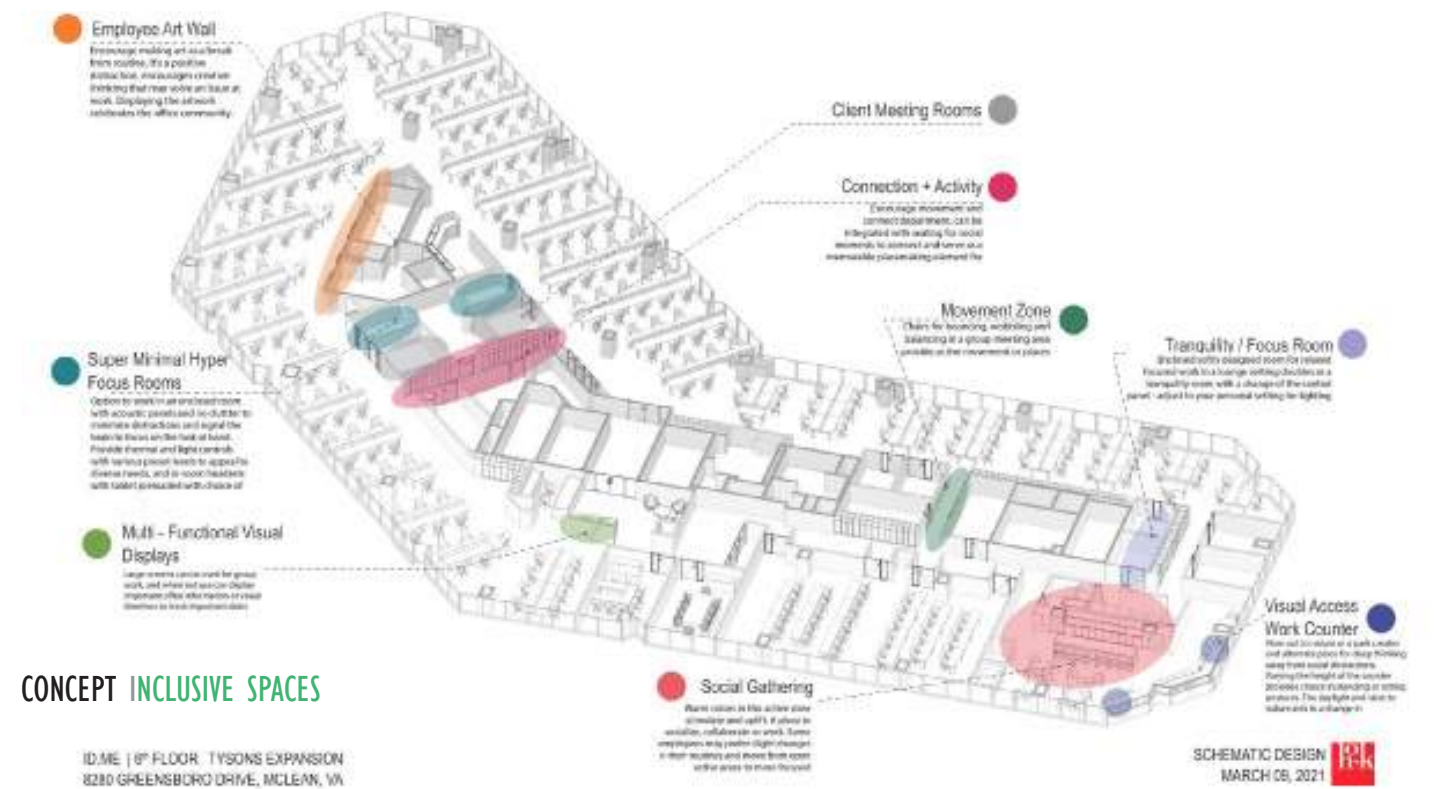
PROJECT BACKGROUND: ID.me

This tech firm, is consolidating and growing its call center in McLean, VA two floors beneath headquarters. The campus is in a Tysons Corner Center a census designated and design area. This mini city hosts luxury apartments and gallerias. There are several mixed-use properties and transportation hubs. The building is situated two blocks north of a mall. Multiple tenants use this commercial building.

* I designed this project under HOK. I was part of a 2-person design team. I was responsible for the amenity spaces. I designed the social hub, reception, and the RCP. I oversaw creating majority of the construction document set.

IMANI ALETHIA

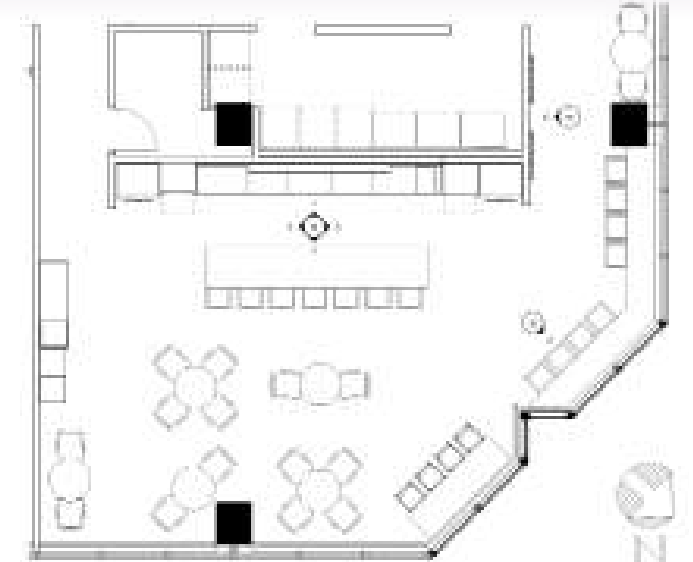
ID.me



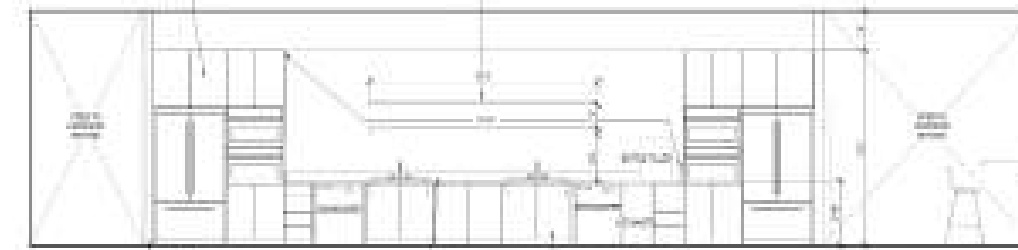
05



ID.me essentials



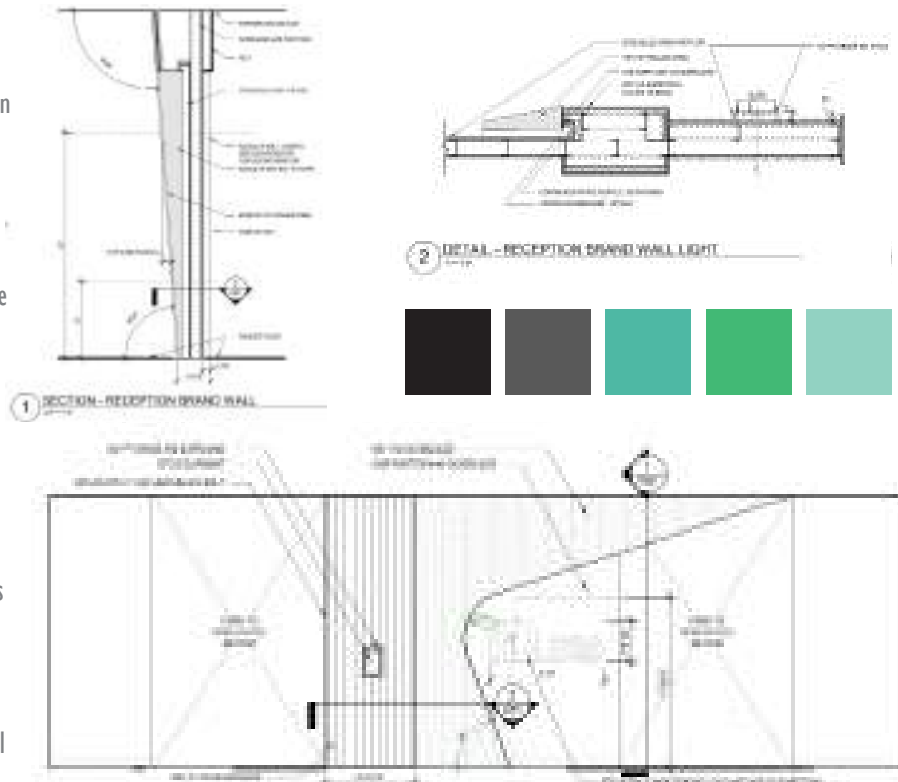
ENLARGED PLAN
FLOOR PLAN LEVEL 06



ELEVATION SOCIAL HUB PANTRY

SOCIAL HUB

The Social Hub is the main pantry and eating area for this call center. The design imitates a galley kitchen style giving it a residential feel. The floating shelves allow for ID.me branded kitchen items to be displayed. The design is focused on the window surround allowing the architecture and natural light to speak.



FLOOR PLAN LEVEL 06

On level 8 corrugated metal and wood greets visitors upon entry. This industrial design aesthetic was a must have for the client. The industrial architecture elements was also a must have a wood wall feature gives the textured wall dimension and presence. Continuing wood section over the walkway creates a slanted portal into the open workplace.



THANK YOU!



IMANI ALETHIA

+1 9293589063
imanialethia@gmail.com
@imanialethia