

PORTFOLIO

MICHAEL YIP
Hospitality • Experiential • Mixed-Use

Selected Works (2023-2025)

About Me

I am a fifth-year architecture student at Cal Poly Pomona with an interest in hospitality, experiential, and mixed-use environments. My approach to architecture centers on the design of experiences shaped by narrative, sequence, and real operational use. These philosophies guide how I think about architectural decisions and their impact on how environments are perceived, occupied, and remembered over time. I am particularly interested in hospitality architecture and how cultural meaning, brand identity, and guest experience inform coherent architectural form. This portfolio presents selected academic work that reflects my focus on experience-first design, systems thinking, and architectural clarity at real scale.

Bachelor of Architecture (B.Arch), California State Polytechnic University, Pomona
Expected 2026

Table of Contents

W Hotels Anaheim AI & Hospitality Design Studio	4
Mount Wilson Research Retreat Architectural Design Studio	14
The Row at Santiago Housing Design Studio	18
Irrigations of Industry Makerspace Bobby Brooks Interdisciplinary Studio	24
Disney Imaginations 2024 LA Slingshot	30
Disney Imaginations 2025 EpiCenter	34

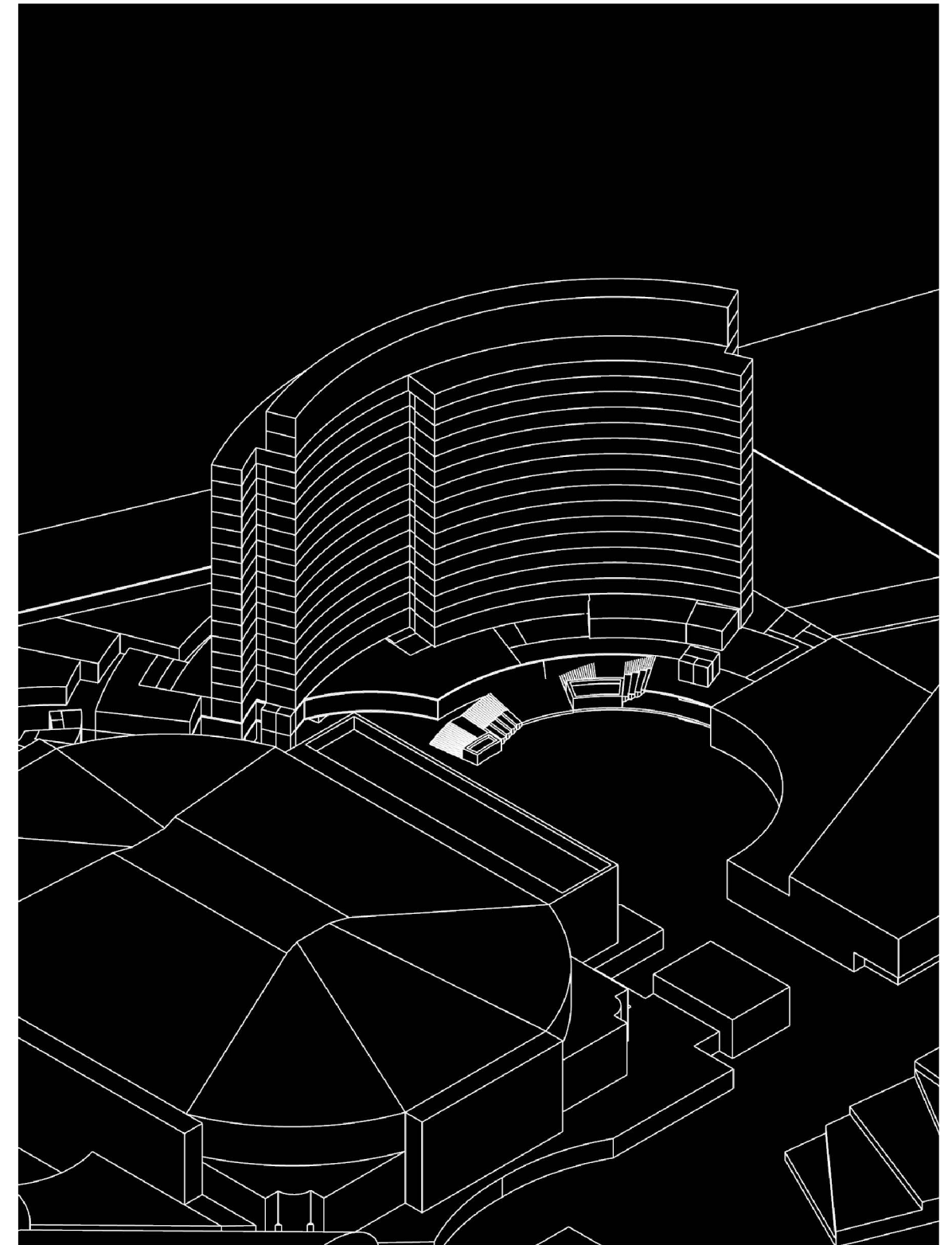
W Hotels Anaheim

Anaheim, CA

AI & Hospitality Design Studio

Located within the emerging OC Vibe entertainment district adjacent to the Honda Center, this project proposes a W Hotels flagship that positions hospitality as a continuous cultural engine rather than a destination activated only by major events. The design responds to the district's intermittent energy by introducing a layered sequence of brand-sponsored, experience-driven spaces that extend activity beyond game nights and concerts.

Organized through a series of radiating arcs that engage the south plaza, the architecture frames circulation and views, reinforcing the hotel's relationship to the primary gathering space of the entertainment district. Through programmatic layering and spatial sequencing, the project translates W Hotels' lifestyle-driven brand values into an architecture that supports daily activation, operational clarity, and a diverse spectrum of guest experiences.



397-key mixed-use hotel within the OC Vibe entertainment district.



EMERGING ENTOURAGES

Young adult friend groups represent the core of our stage cast. These entourages are looking to curate connections with the community and the culture that lives around them. Making up the most of the target demographic, this group is often left to sway in the grand Anaheim's tourism theater.



EXECUTIVE ENSEMBLES

Creative Teams are the foundation of innovative ideas the Anaheim area has always been known for. These executives are looking for refreshed backdrops that foster expressive freedom. Executive Ensembles are energetic, enlightened, and expecting a different setting than your typical event hotel.



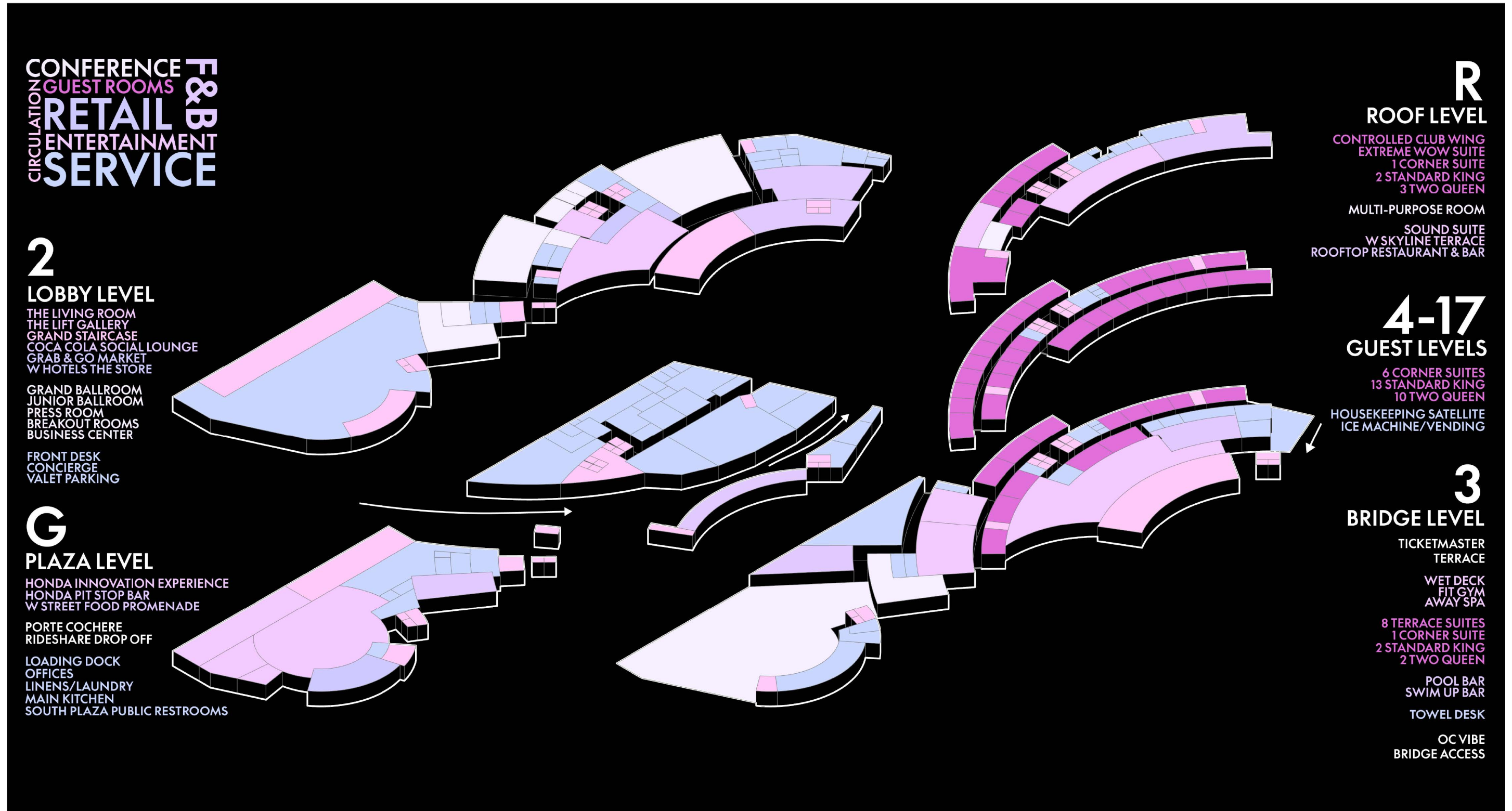
633 GUEST ROOMS	8000 PARKING SPACES	1+ RETAIL LOCATIONS	3 MILES RIVER-INSPIRED ART WALK
2250 RESIDENTIAL UNITS	63+ F&B LOCATIONS	26,100 VENUE SEATS	3-7 SITE ACTIVITIES HONDA CENTER CONCERT HALL THEATER GOLDEN BEAR QSR & FINE DINING PARKS & PLAZAS ART WALK

EVENT ENTRANTS

Extravagant Events are one of the main drivers that attracts visitors to the Anaheim area. Leading the excitement from on-stage, these performers also seek out their own sense of respite in their off-time. Event Entrants are exploring ways to experience rest, recovery, and rejuvenation in engaging environments.



Site and market analysis reveal a high-capacity entertainment district with limited everyday activation. Target audience and brand alignment inform the hotel's architectural role within the OC Vibe master plan.



Program stacking and revenue logic align branded experiences, premium adjacencies, and guest room hierarchy to support both operational clarity and economic performance.

DESIGN THAT PERFORMS

MICE COMPLEX

28000 SF. TICKETMASTER TERRACE
7400 SF. GRAND BALLROOM
4000 SF. DIVISIBLE JUNIOR BALLROOM

2000 SF. PRESS ROOM
750 SF. BOARD ROOM COLLECTION
350 SF. BREAK OUT ROOMS
500 SF. BUSINESS CENTER

CONVENIENT RESTROOMS
15000 SF. PREFUNCTION

REVENUE ENGINE
ELEVATE CO-BRAND EQUITY
LEVERAGES LIFESTYLE CULTURES
RIVALS COMPETING EXPERIENCES

BRAND VALUE

W HOTELS

ARC & ADR

PARTITIONED CLUB FLOOR
BOOKED FOR SPECIAL PARTIES

HIGHER FLOOR WEST ROOMS FACE
DISNEYLAND RESORT VIEW

LOWER FLOOR WEST ROOMS ORBIT
HONDA CENTER SOUTH PLAZA

CORNER CONDITIONS
CREATE SOUGHT UNIQUE VIEWS

WET DECK ADJACENCY
CREATES OUTDOOR SUITES

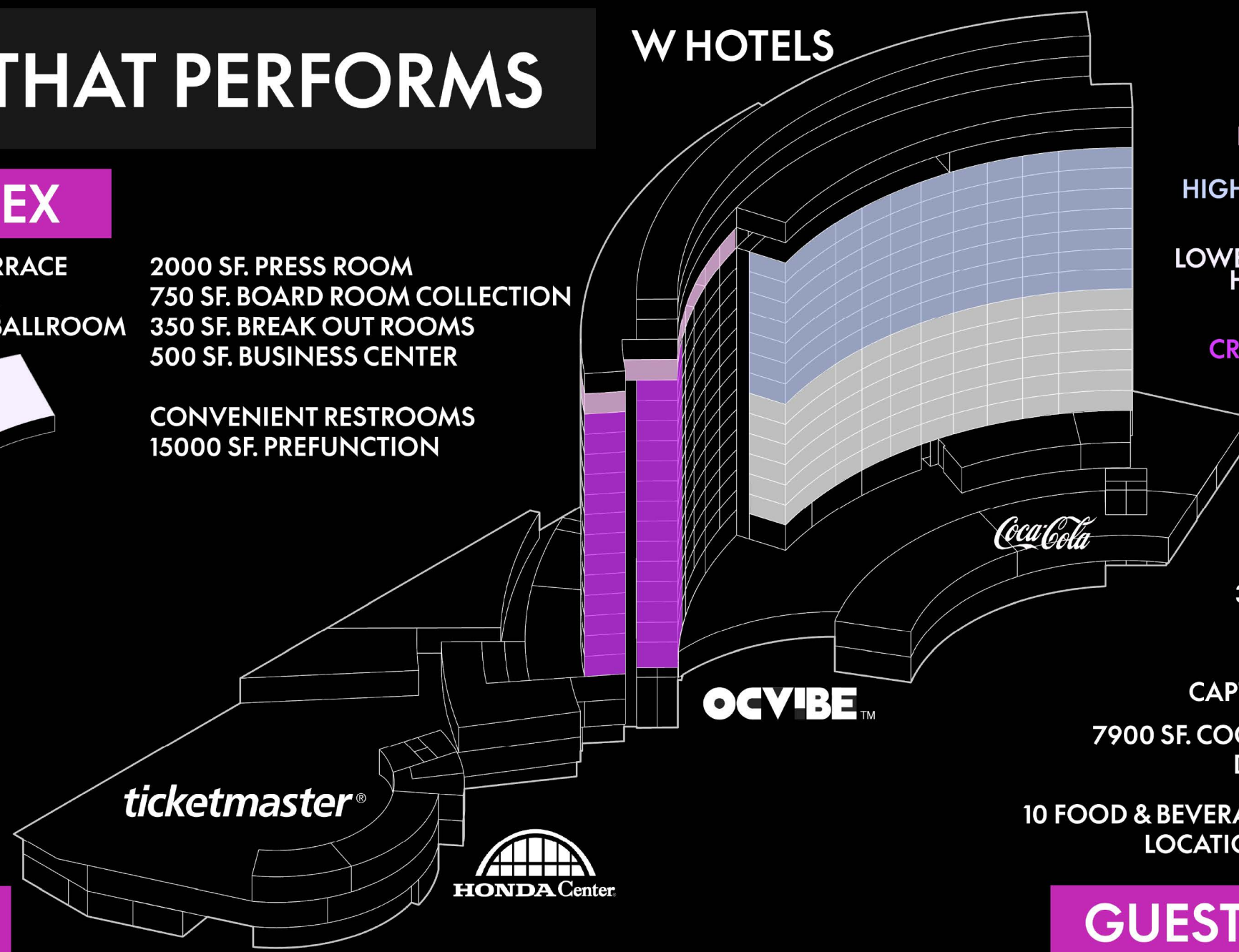
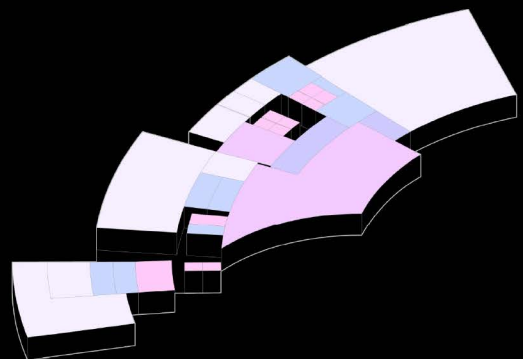
30000 SF. HONDA EXPERIENCE
ANCHORS EAST PLAZA

2200 SF. HONDA BAR
CAPTURES SOUTHEAST ENTRANCE

7900 SF. COCA COLA PATIO & 8900 SF. WET
DECK CONNECT SOUTH PLAZA

10 FOOD & BEVERAGE OPTIONS ON-SITE WITH 8
LOCATIONS DRIVING ALCOHOL SALES

GUEST EXPERIENCES



ticketmaster®



OCVIBE™



The hotel's massing and program strategy operate as a revenue engine, using spatial hierarchy, premium adjacencies, and view corridors to drive Average Daily Rate (ADR) and reinforce brand values.

W Hotels Anaheim



Cross-section reveals the hotel's vertical organization and aligns the public activation at the plaza level with stacked guest rooms above. Programmatic transitions reinforce the relationship between event-driven spaces, guest experience, and operational efficiency.



The W Living Room establishes a layered social environment where arrival, lounging, and activity overlap. The bar's presence reinforces the space as an active destination throughout the day, encouraging lingering, visibility, and informal interaction tied to the energy of the plaza and beyond.



A double-height social lounge designed as an “on-stage” gathering space that extends event energy through brand-driven nightlife.



A rooftop destination oriented toward long views, offering social experiences tied to landmarks and large-scale events beyond the site.



A plaza-facing bar positioned at a primary stadium entry, capturing pre- and post-event traffic along the plaza edge.

Selected visualizations generated using AI-based image tools as part of an academic AI & Hospitality Design Studio.



A branded exhibition space that merges tech and entertainment, creating continuous site activation beyond event schedules.

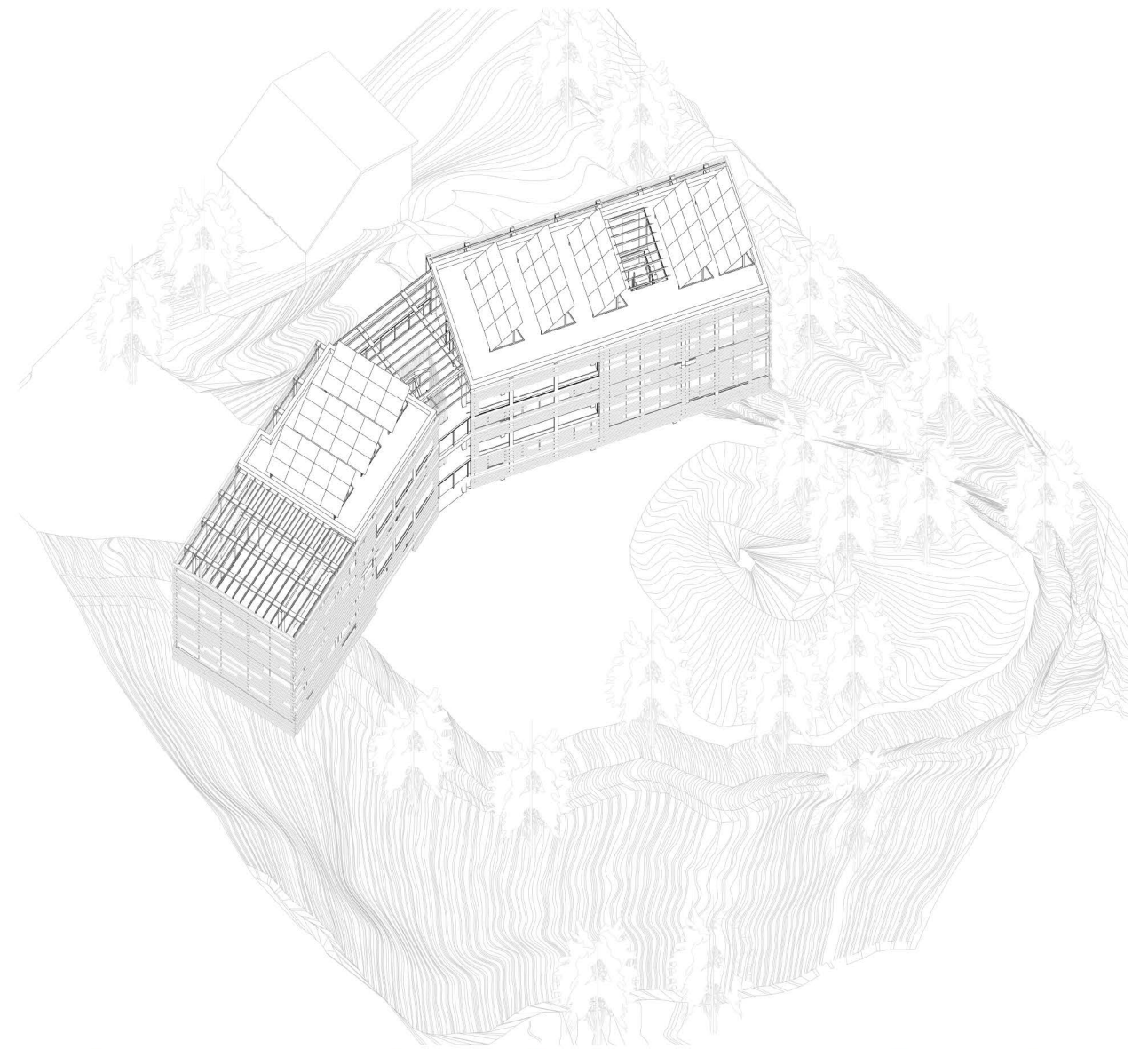
Mount Wilson Research Retreat

Mount Wilson, CA

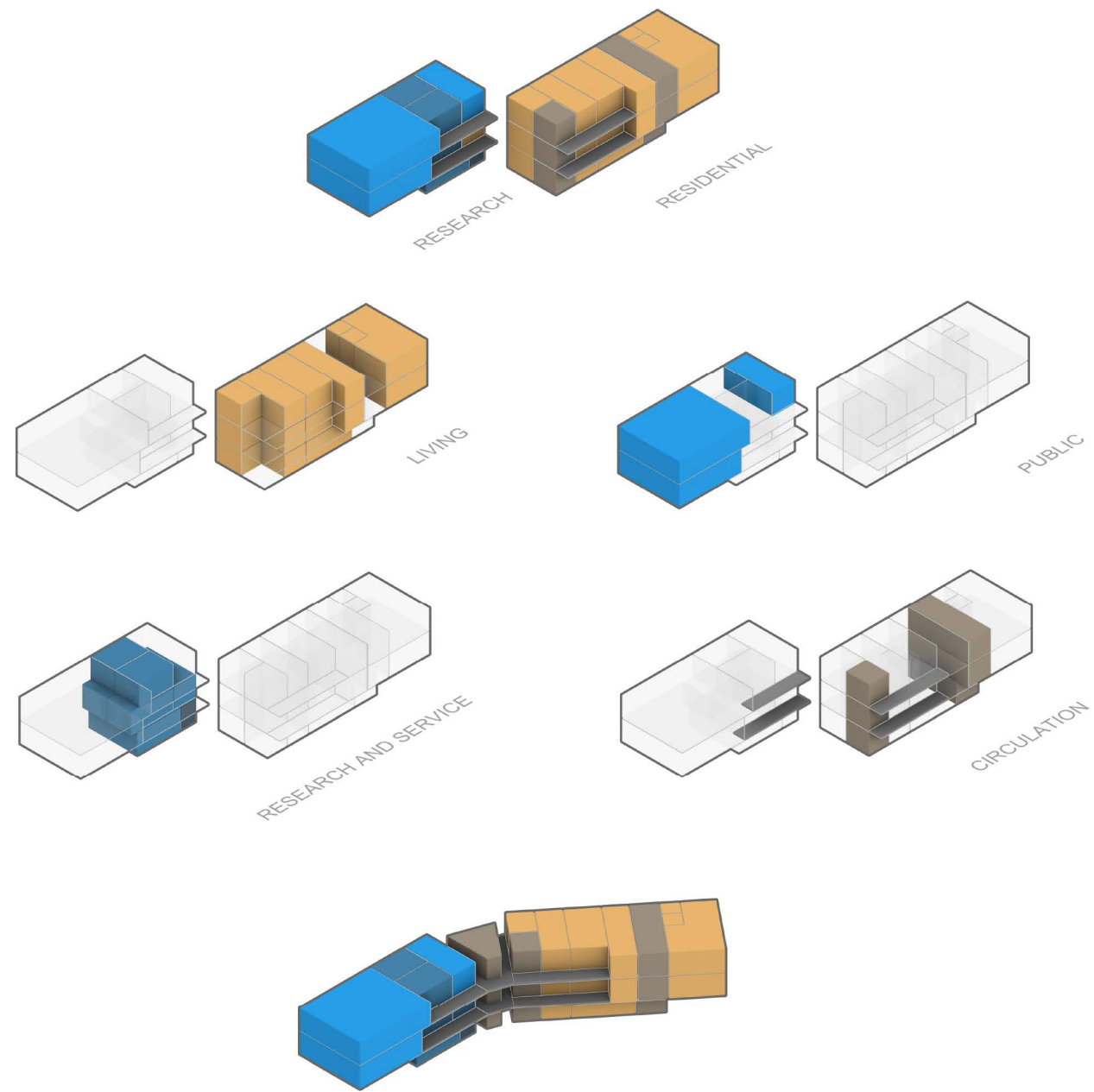
Architectural Design Studio

Located within Angeles National Forest, Mount Wilson is a site defined by both scientific legacy and extreme landscape conditions. While existing facilities continue to support astronomical research, much of the surrounding terrain has been relegated to utilitarian storage and service functions that diminish the site's experiential potential.

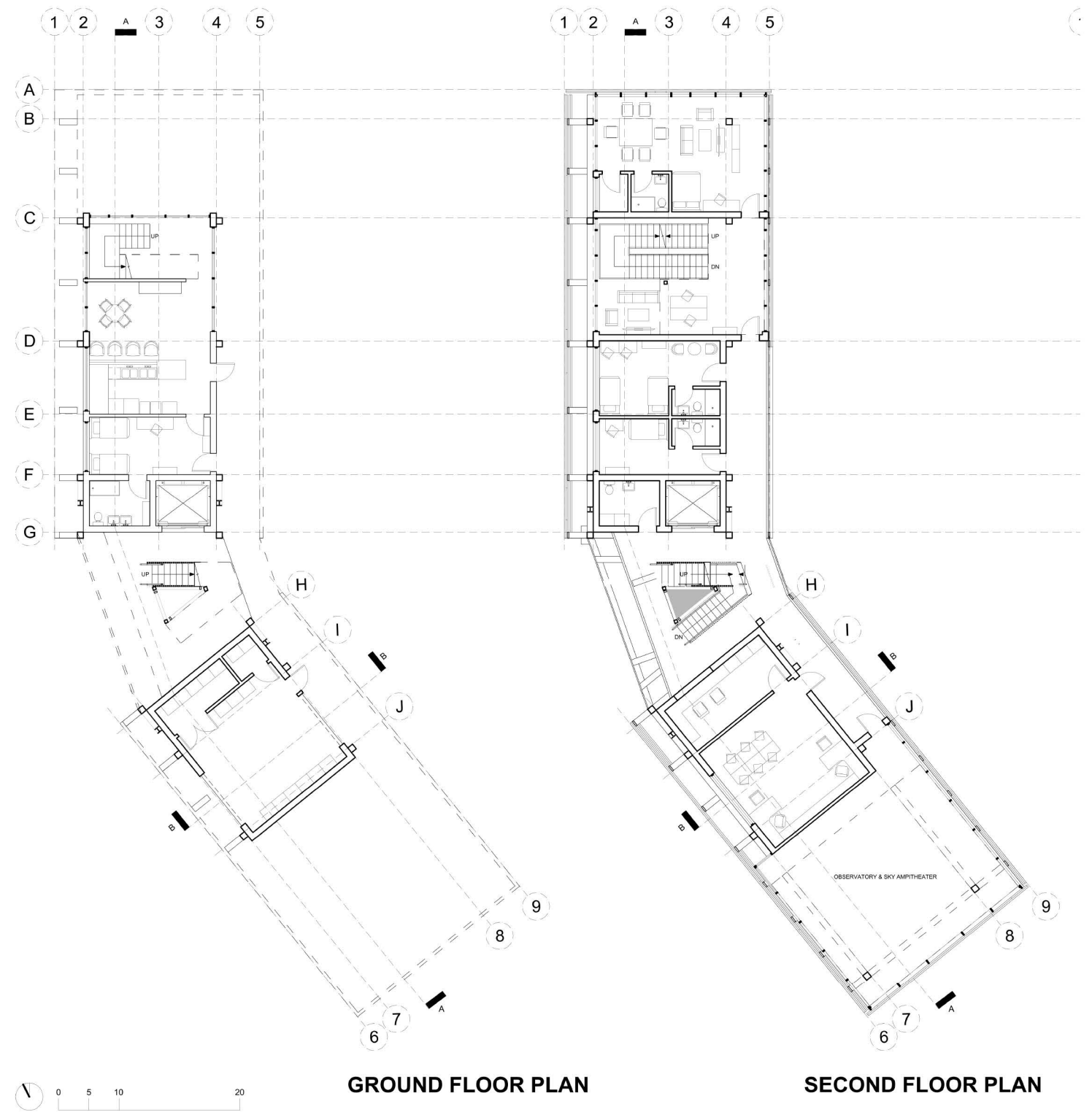
The Mount Wilson Research Retreat reclaims this condition by organizing a single, landscape-driven building that frames a protected outdoor court at the end of a primary pedestrian path. The project separates residential and research programs into two wings, allowing scientists to alternate between focused work, communal living, and engagement with the surrounding environment. This architecture operates as an extension of the terrain, prioritizing views, minimizing disturbances, and reinforcing the site as both a destination and a place of retreat.



Landscape-integrated research retreat at Mount Wilson within Angeles National Forest.



DESIGN PROGRAM

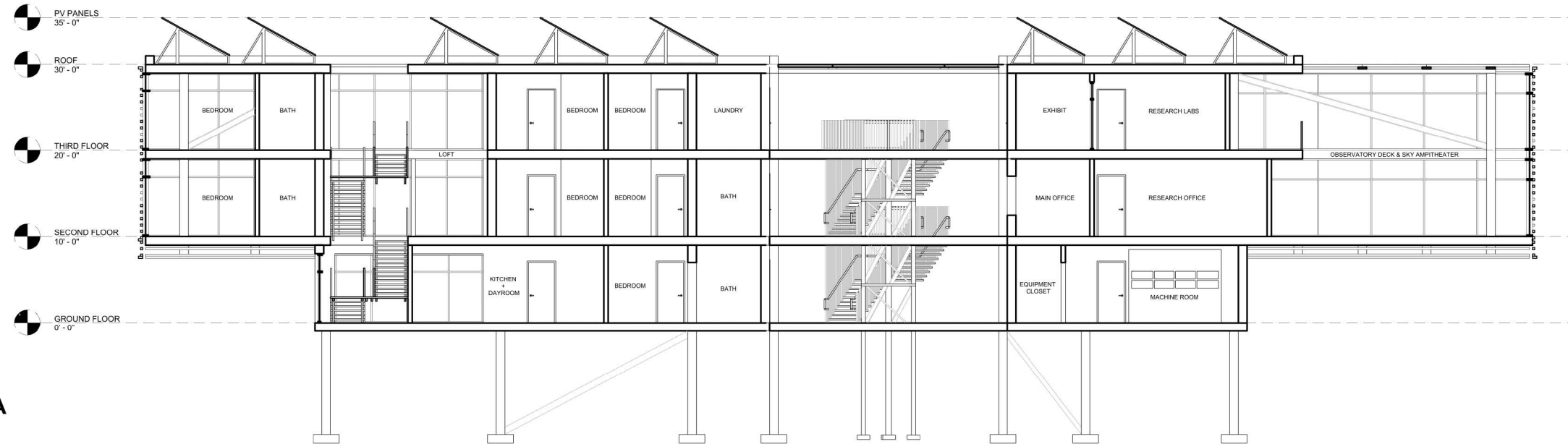


GROUND FLOOR PLAN

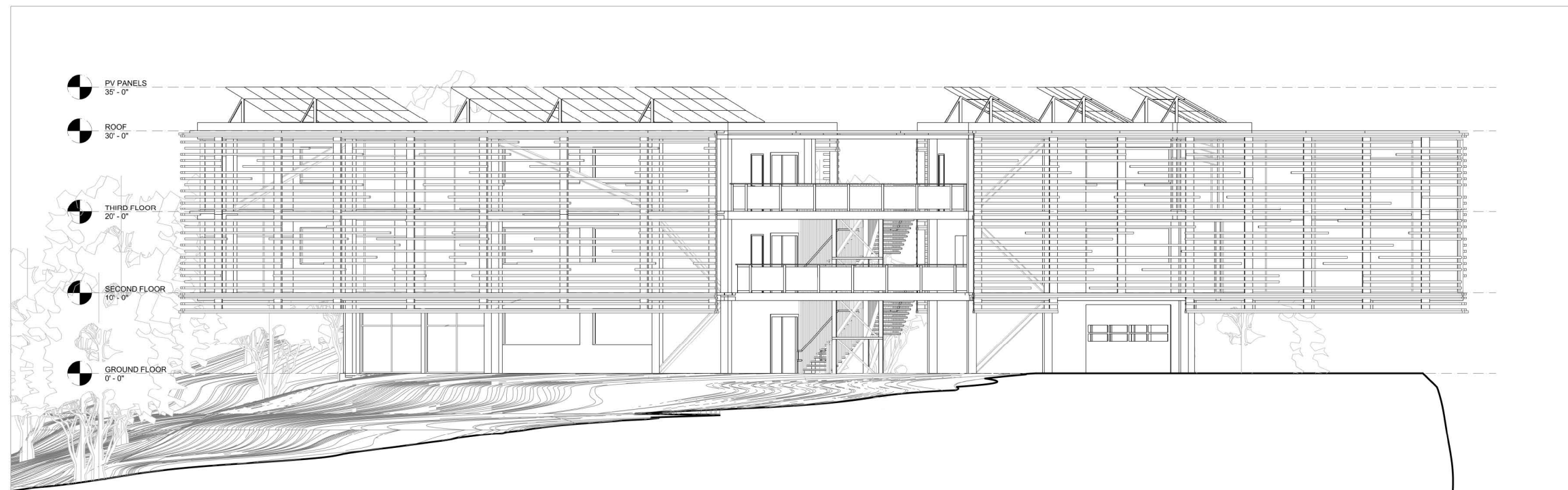
SECOND FLOOR PLAN

Program organization separates public research spaces and private residential functions while maintaining shared circulation and visual connection to the landscape.

Mount Wilson Research Retreat



UNROLLED SECTION AA



EAST ELEVATION

Section and elevation illustrate how the building steps with the terrain, framing an outdoor courtyard while minimizing visual impact on the forested landscape.



The research retreat is experienced as a sequence of sheltered outdoor spaces and walkways, where architecture recedes to emphasize the landscape, light, and long-distance views.

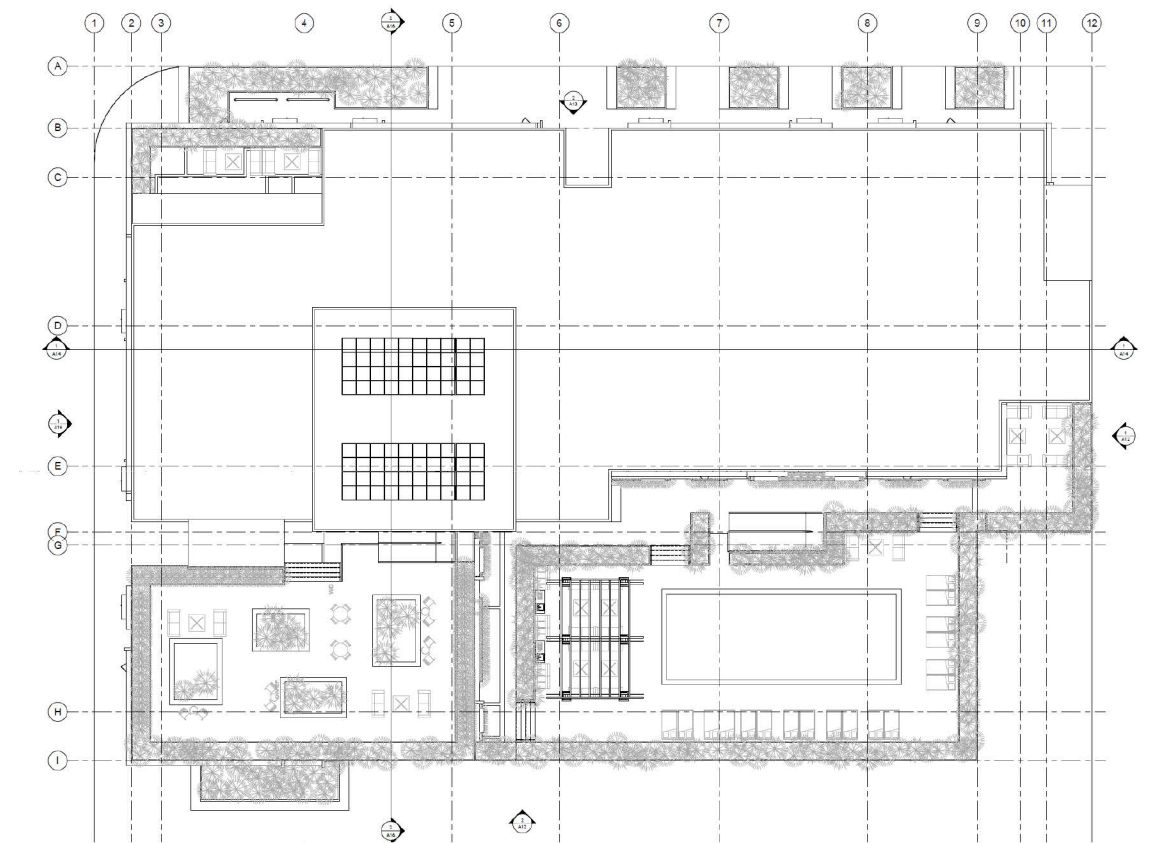
The Row at Santiago

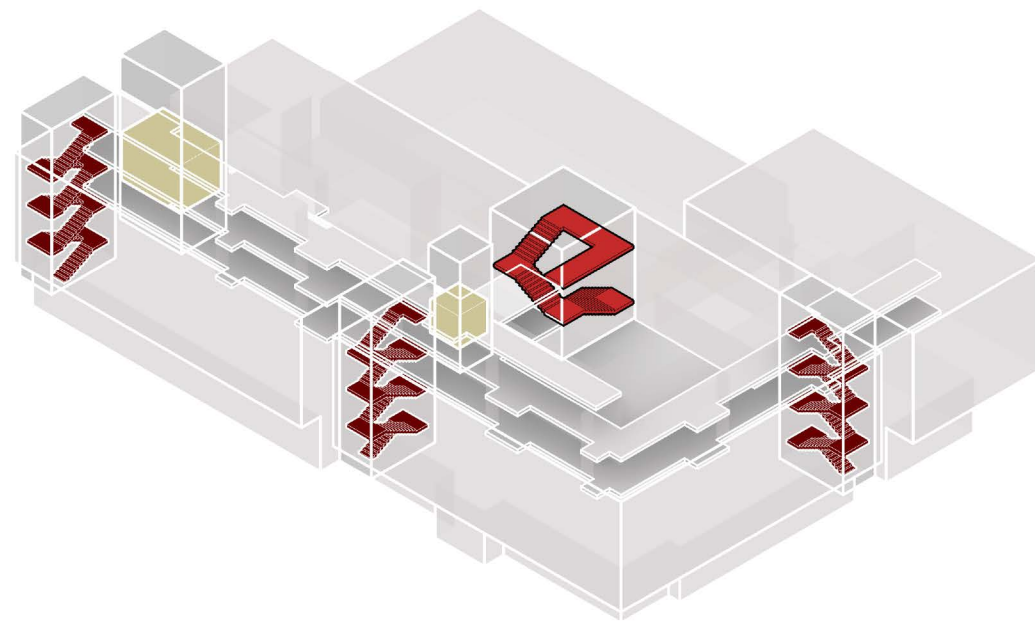
Santa Ana, CA




Housing Design Studio

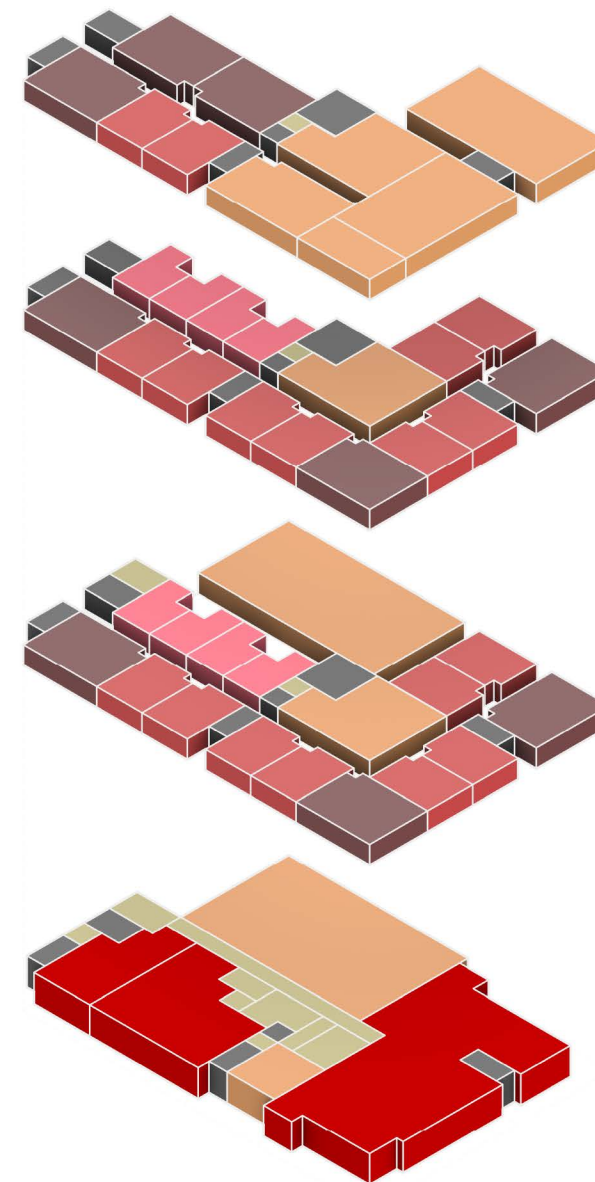
Located adjacent to Santa Ana's primary transit hub, this mixed-use housing project occupies a parcel within a proposed master plan transforming former industrial land into a dense, transit-oriented neighborhood. The site's proximity to regional rail, bus networks, and a shared pedestrian promenade positions the building at the intersection of residential life and constant public movement.








The project responds by organizing residential and public programs through an L-shaped mass that buffers transit activity while framing a protected outdoor terrace for residents. A central atrium resolves the internal corner condition, allowing light, circulation, and shared space to coexist while maintaining privacy and domestic scale within a highly active urban context.





K E Y	 MEANS OF EGRESS
	 ATRIUM STAIRCASE
	 ELEVATOR

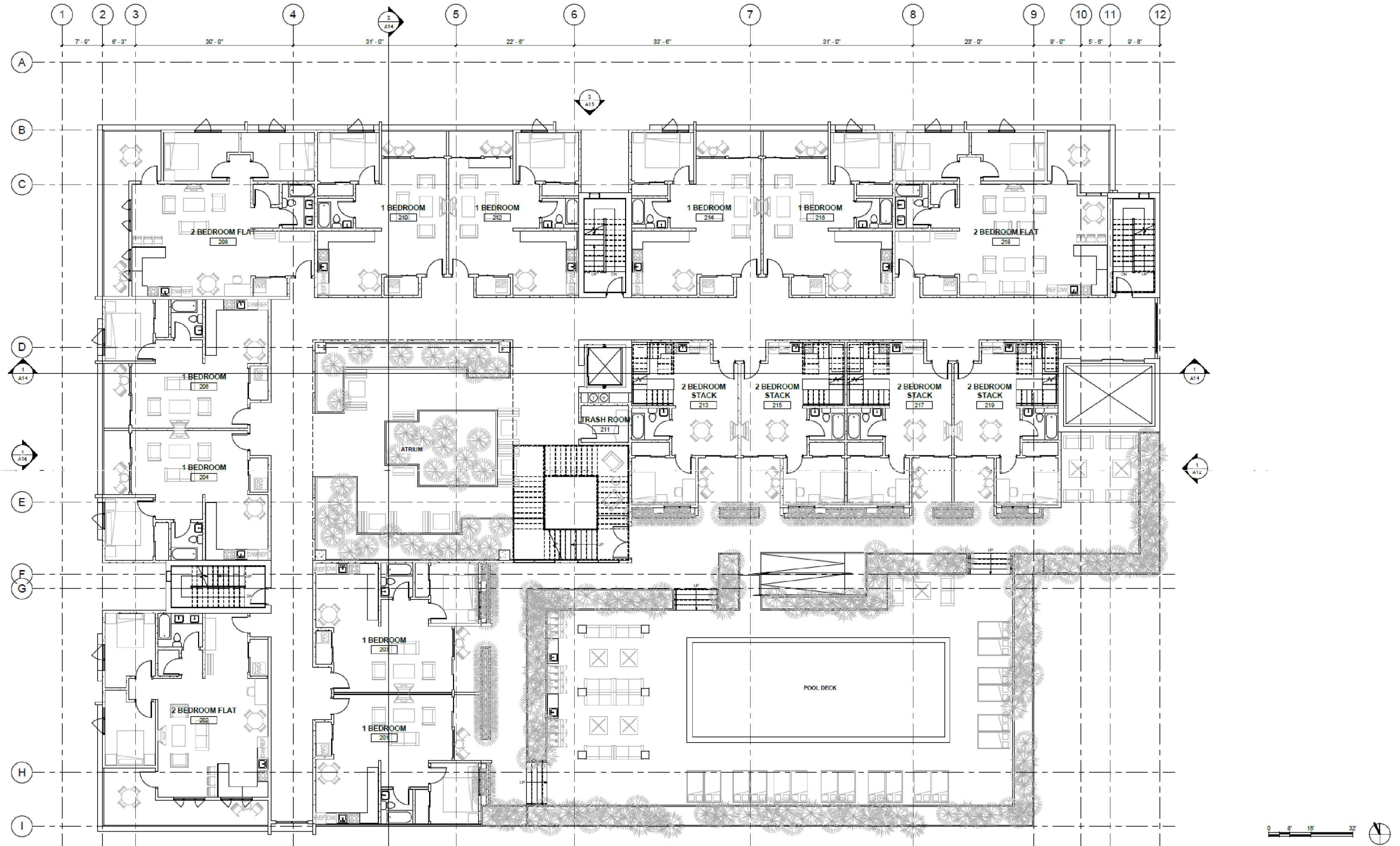


K E Y	 1 BEDROOM	 RESIDENTIAL AMENITY	 SERVICE
	 2 BEDROOM	 COMMERCIAL	
	 2 BEDROOM STACK	 VERTICAL CIRCULATION	

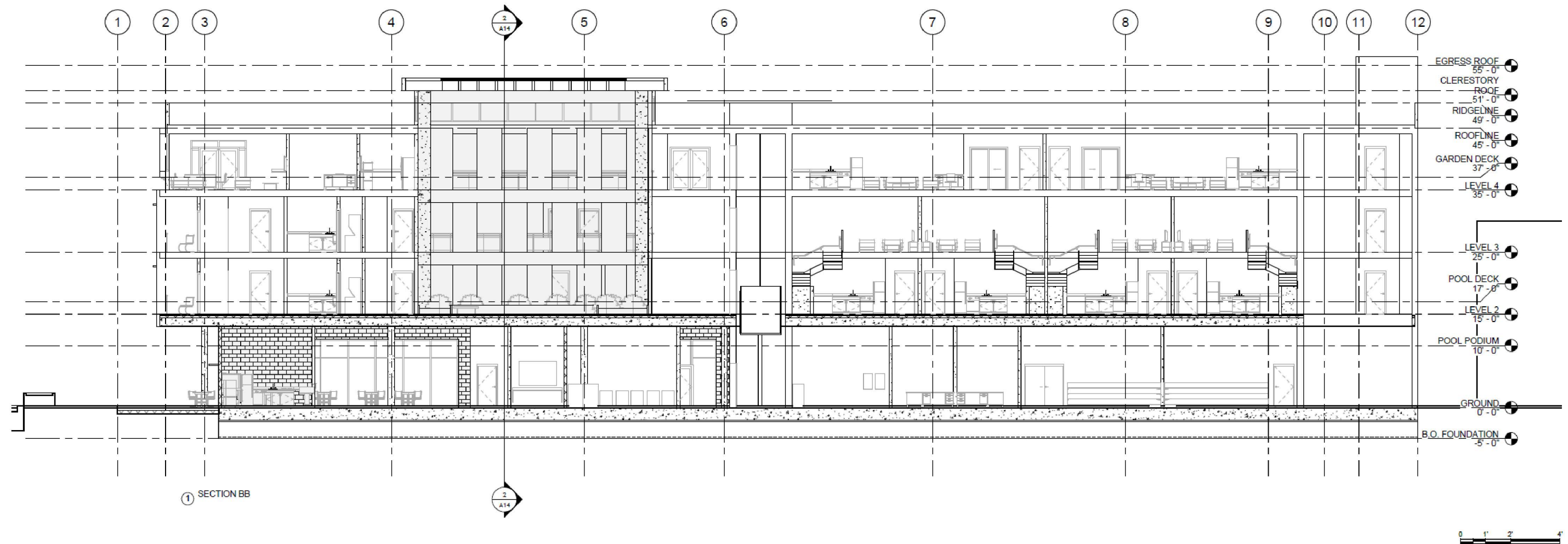
4	<ul style="list-style-type: none"> ○ ROOFTOP TERRACE ○ COMMUNITY ROOM ○ FITNESS CENTER ○ UNITS 413 - 418
3	<ul style="list-style-type: none"> ○ UNITS 301 - 319
2	<ul style="list-style-type: none"> ○ POOL DECK ○ ATRIUM ○ UNITS 201 - 219
G	<ul style="list-style-type: none"> ○ CONVENIENCE STORE ○ POSTAL CENTER ○ FOOD HALL ○ GARAGE ○ LOBBY

Program and circulation strategies balance public engagement along the promenade with controlled residential access, organizing movement and privacy within a transit-oriented urban condition.

The Row at Santiago

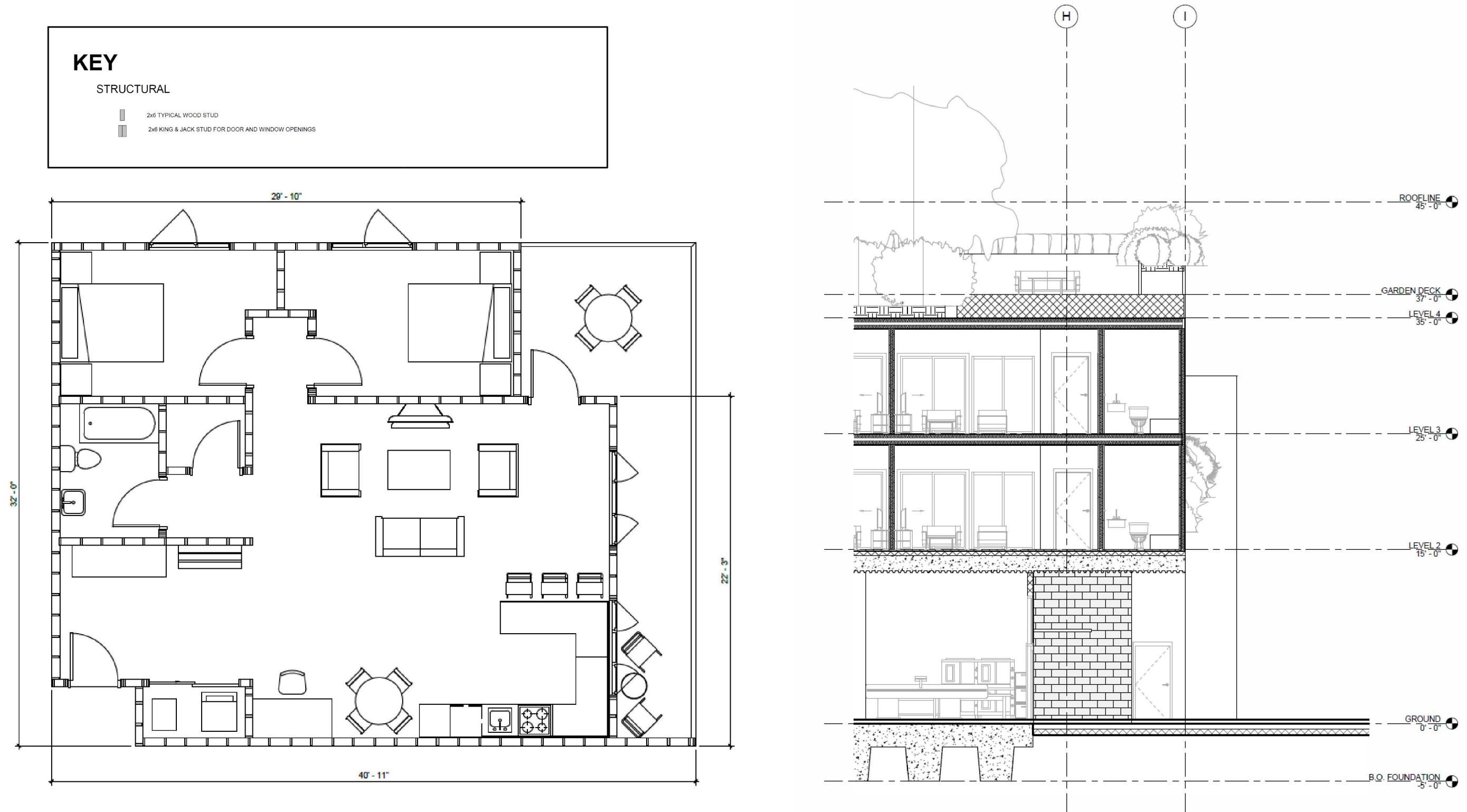


The typical residential floor plan organizes units around an exterior pool deck and circulation spine, balancing privacy, daylight access, and communal outdoor space while maintaining efficient unit layouts.



The section reveals the vertical relationship between residential floors, shared amenities, and ground-level public uses, reinforcing a clear separation between public activity and private living spaces.

The Row at Santiago



The aggregation logic organizes residential units, circulation, and structure into a repeatable system that adapts across the block, supporting efficient construction while maintaining variation in unit orientation and outdoor space.



The elevations express a layered residential massing that balances density, privacy, and public engagement through shifts in depth, material, and terrace placement along the street edge.

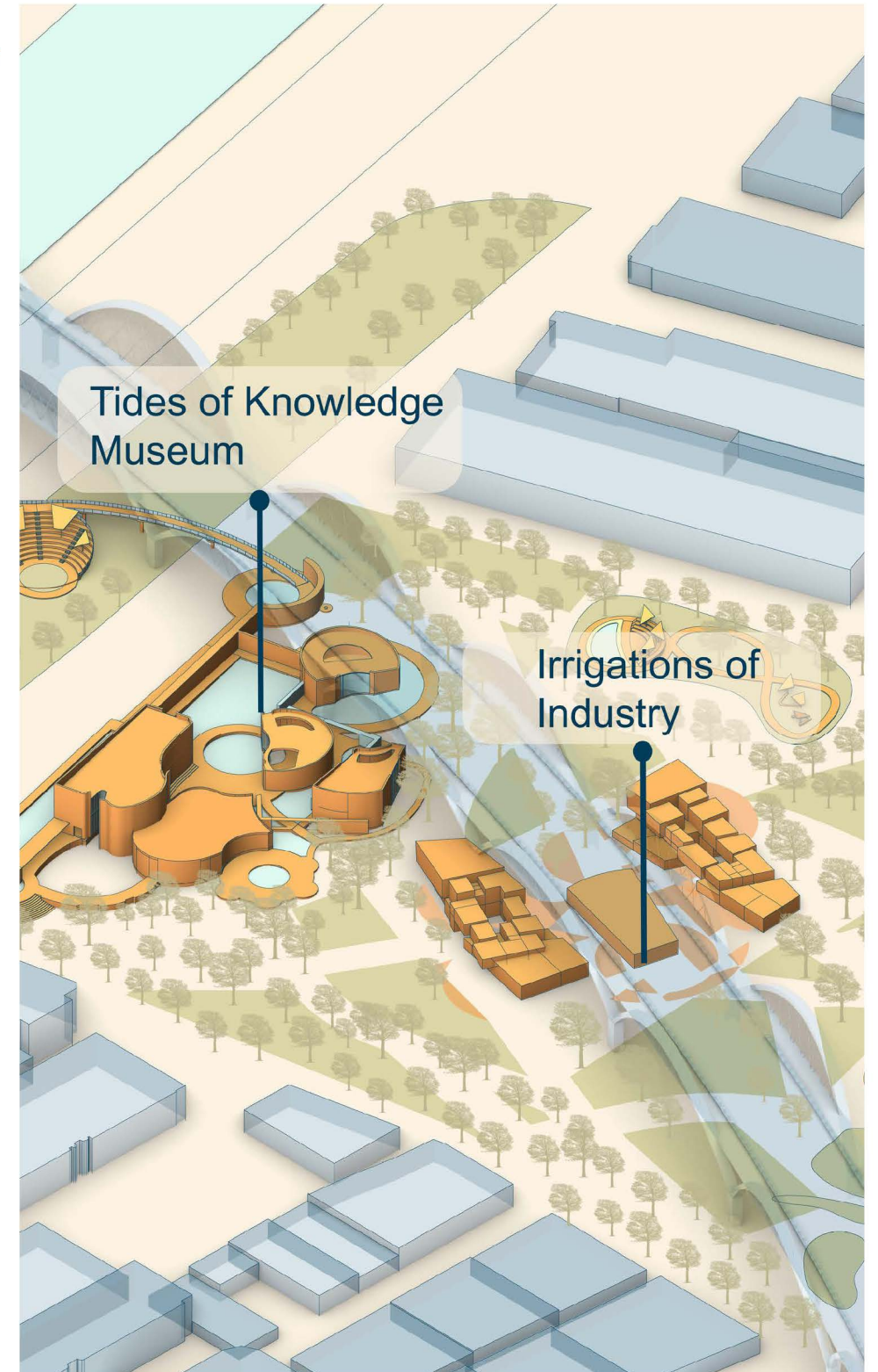
Irrigations of Industry Makerspace

Boyle Heights, Los Angeles, CA

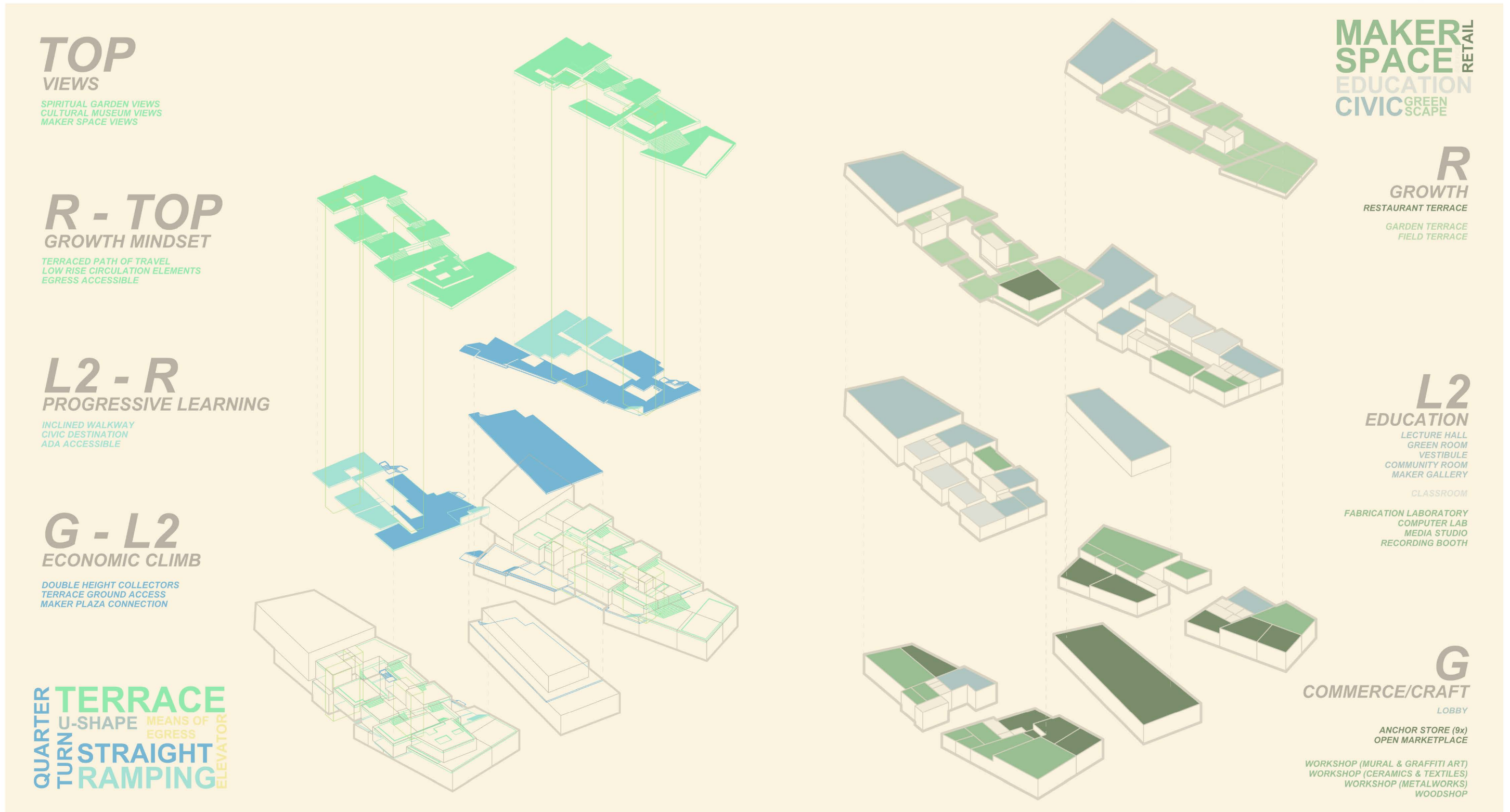
Bobby Brooks Interdisciplinary Studio

Located beneath the 6th Street Viaduct along the Los Angeles River, Irrigations of Industry is situated within Boyle Heights, a neighborhood shaped by cultural resilience amid ongoing pressures of redevelopment and displacement. While the surrounding river corridor and infrastructure reflect the area's industrial history, limited access to spaces for making and economic exchange has constrained community-driven production and expression.

The project responds by proposing a makerspace and commerce hub that supports learning, fabrication, and public exchange while preserving community ownership. Organized as three buildings dedicated to arts, technology, and showcase functions, the makerspace mediates between public plazas, and interior workspaces. Here, architecture operates as a framework for cultural continuity, enabling residents to combine traditional craft with contemporary tools in a setting that prioritizes access, agency, and resilience.



Community-focused makerspace and commerce hub along the Los Angeles River.

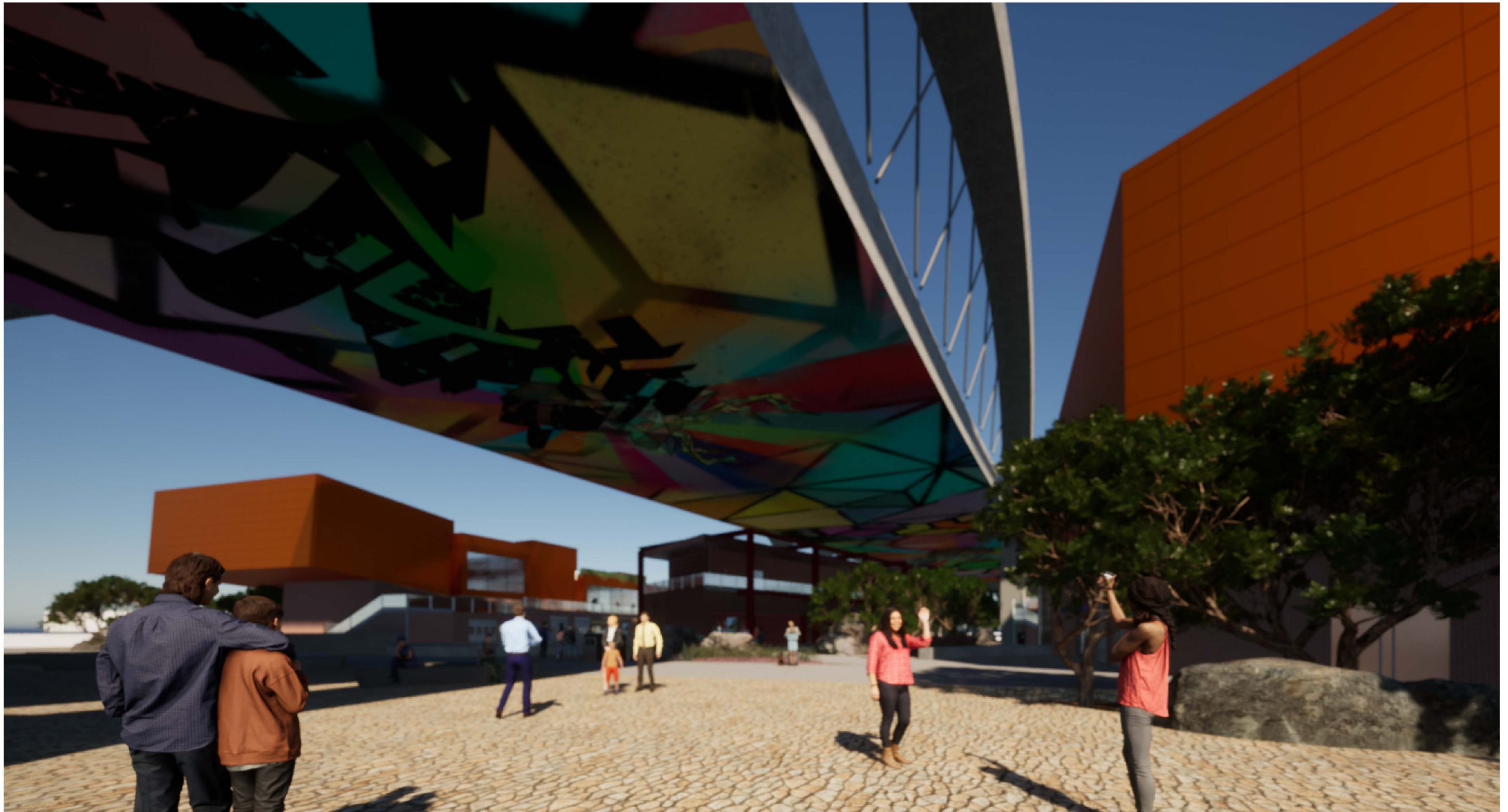


Programmatic stacking and circulation strategies organize making, learning, and personal growth through a continuous vertical sequence.

Irrigations of Industry Makerspace



The section reveals the vertical organization of public, maker, and educational spaces beneath the 6th Street Viaduct, framing protected plazas while maintaining visual and physical connections to the bridge and river corridor.



Public plaza beneath the viaduct transforms the underside of infrastructure into a civic gathering space for making, exchanging, and community interaction.

Irrigations of Industry Makerspace



The covered promenade activates the ground planes beneath the viaduct, transforming infrastructure into a shaded corridor for informal exchange.

Color, structure, and circulation combine to frame moments of pause along the showcase edge, reinforcing public access to creative activity.

Bobby Brooks Interdisciplinary Studio



Site coordinates makerspaces, local shops, and public courts to support learning, production, and exchange within a civic landscape.

Disney Imaginations 2024

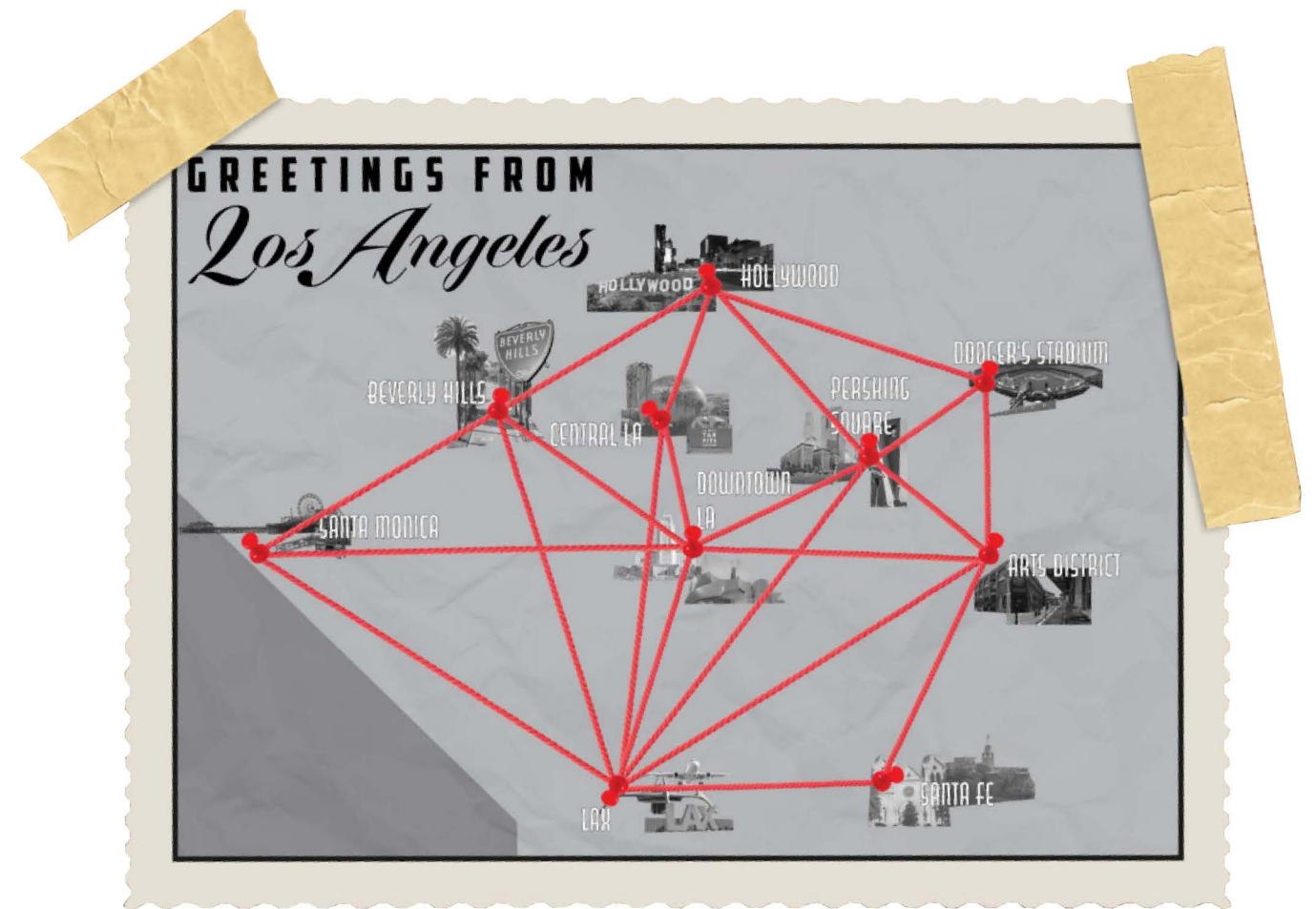
Los Angeles, CA

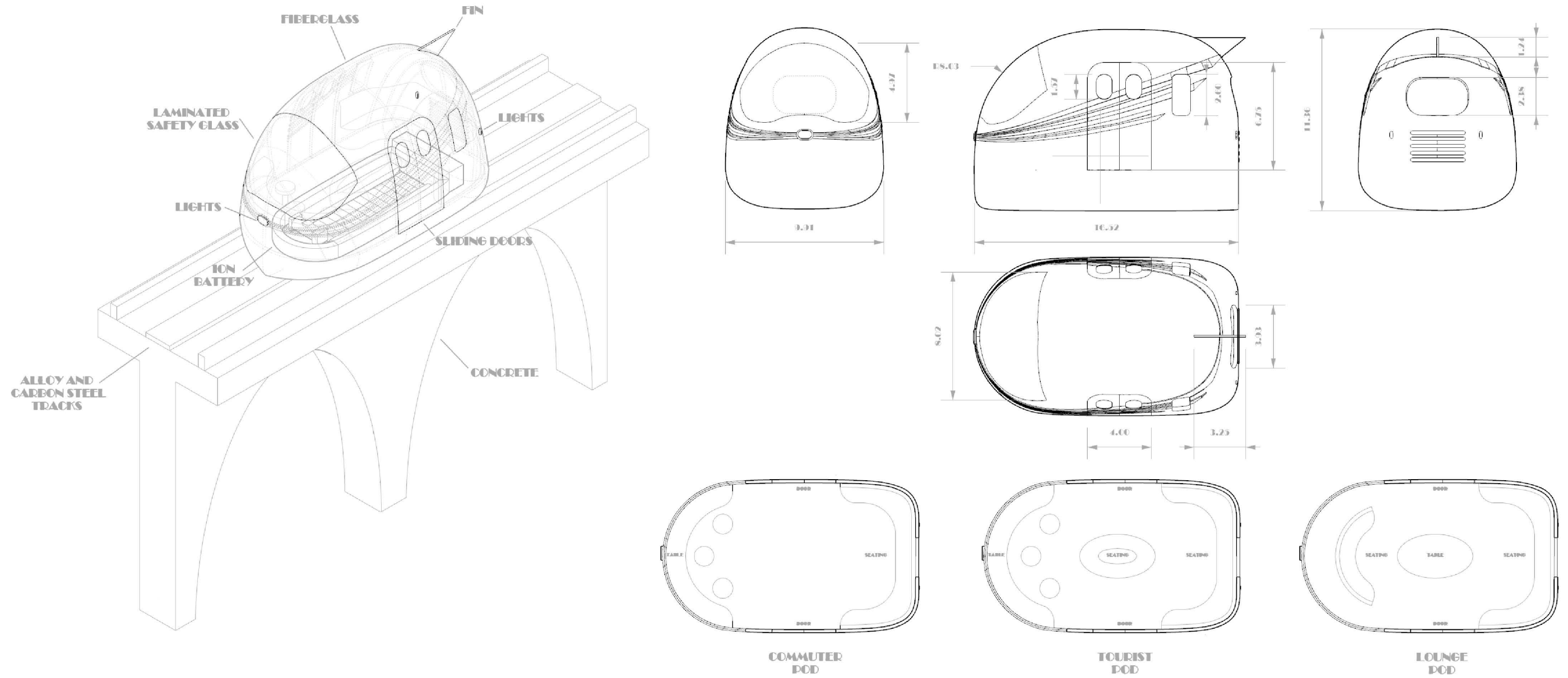
LA Slingshot

Semifinalist

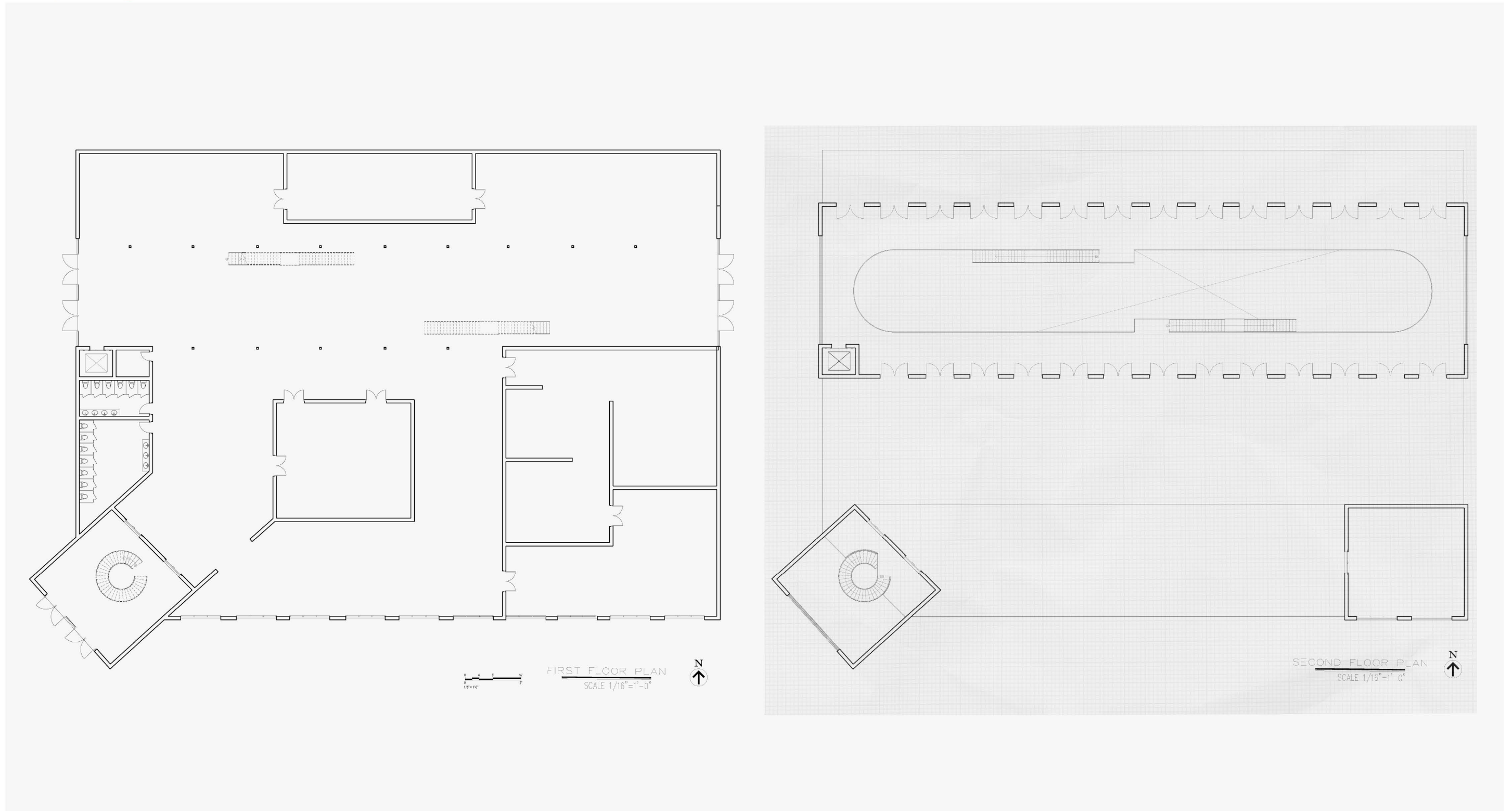
Located across Los Angeles County, LA Slingshot proposes a Personal Rapid Transit (PRT) network designed to reconnect major urban destinations through a direct, elevated transportation system. Positioned as a complement to existing LA Metro infrastructure, the project reframes public transit as an efficient and experiential alternative to car-dominated mobility.

The system is organized around autonomous Auto-Pod vehicles operating along an express network, with stations conceived as civic destinations rather than utilitarian stops. Through architectural references to Los Angeles' historic streetcar infrastructure and the integration of contemporary technology, LA Slingshot positions mobility as a shared civic experience that connects that city both physically and culturally.





The autonomous Auto-Pod vehicle integrates structure, enclosure, and interior layouts to accommodate multiple rider modes within the LA Slingshot transit system.



Station floor plans organize circulation, boarding, and support spaces to enable efficient pod turnover while maintaining clear public access and flexible interior use.



This LA Slingshot station operates as a civic landmark, combining transit infrastructure with public space to transform mobility into a social and experiential destination.

The project was conceived by Cal Poly Pomona LA Slingshot Team and created for the 2024 Walt Disney Imagineering Imaginations Design Competition. This project is the intellectual property of Walt Disney Imagineering. All images and materials are presented for academic and portfolio purposes only.

Disney Imaginations 2025

Pomona, CA

EpiCenter

Semifinalist

Located at the center of Cal Poly Pomona, EpiCenter responds to the campus' agricultural legacy and contemporary challenges surrounding student life, identity, and belonging. While the university is rooted in innovation and cultivation, seismic constraints and commuter-heavy population have fragmented the campus experience and limited opportunity for shared amenities and connection.

The project proposes a campus cultural center organized as a sequence of above- and below-ground pavilions that activate student life through recreation, agriculture, and collective gathering. Anchored by a central heritage tree, the architecture reconnects dispersed campus activity into a unified destination that reinforces continuity, stewardship, and campus identity.

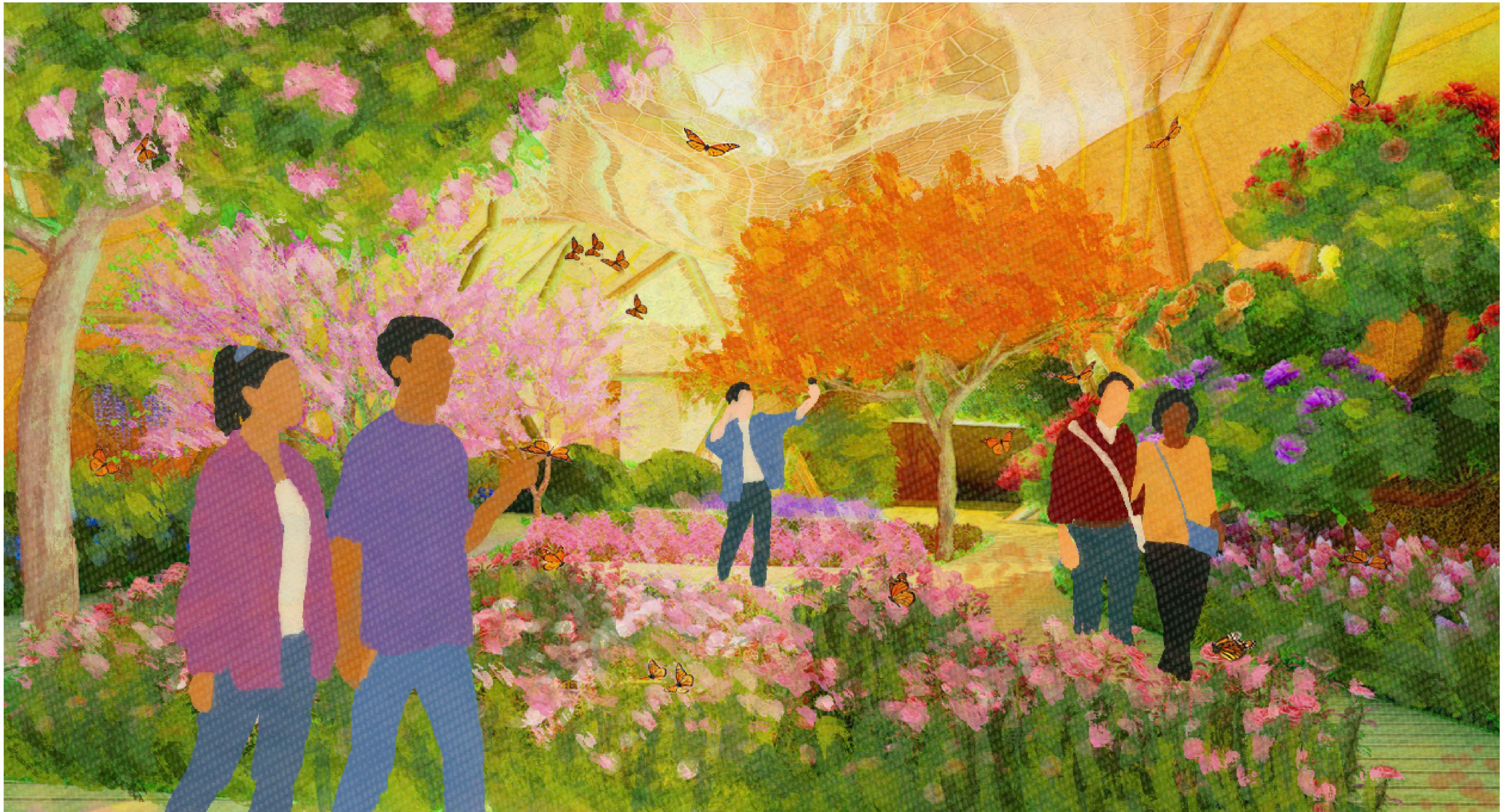




Campus cultural center integrating agriculture, education, and student wellness in the heart of Cal Poly Pomona.



Main interior where storytelling, education, and gathering, converge beneath the campus' symbolic heritage tree.



Landscape-driven pavilion experience blending agriculture, wellness, and social interaction within a cultivated campus sanctuary.

The project was conceived by Cal Poly Pomona EpiCenter Team and created for the 2025 Walt Disney Imagineering Imaginations Design Competition. This project is the intellectual property of Walt Disney Imagineering. All images and materials are presented for academic and portfolio purposes only.

Michael Yip
(650) 556-5274
msyip@cpp.edu

LinkedIn: <https://www.linkedin.com/in/michaelsyip/>