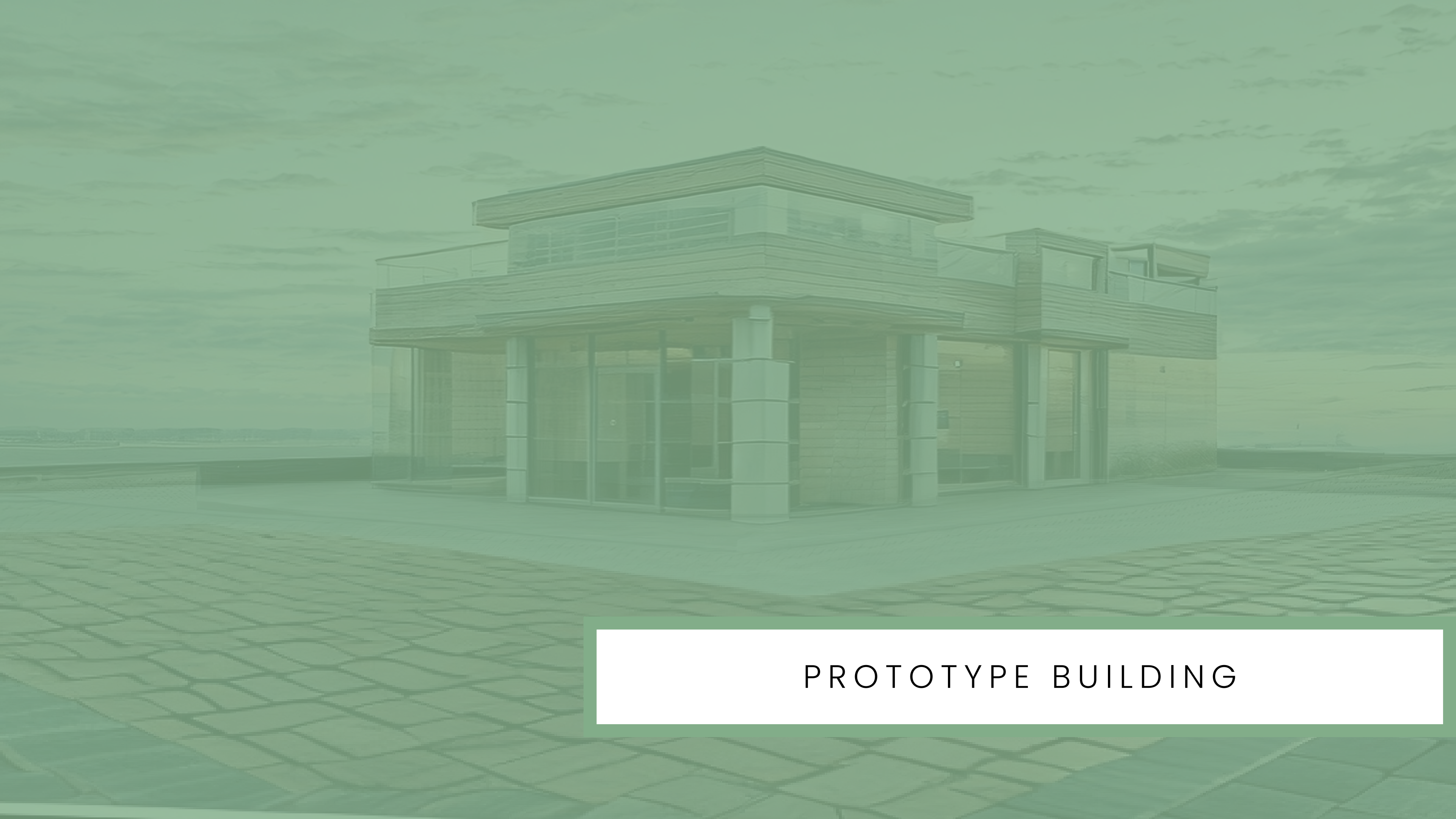




ARCHITECTURE PORTFOLIO

JASON BEARD



PROTOTYPE BUILDING



PRELIMINARY DESIGN

PROJECT OVERVIEW

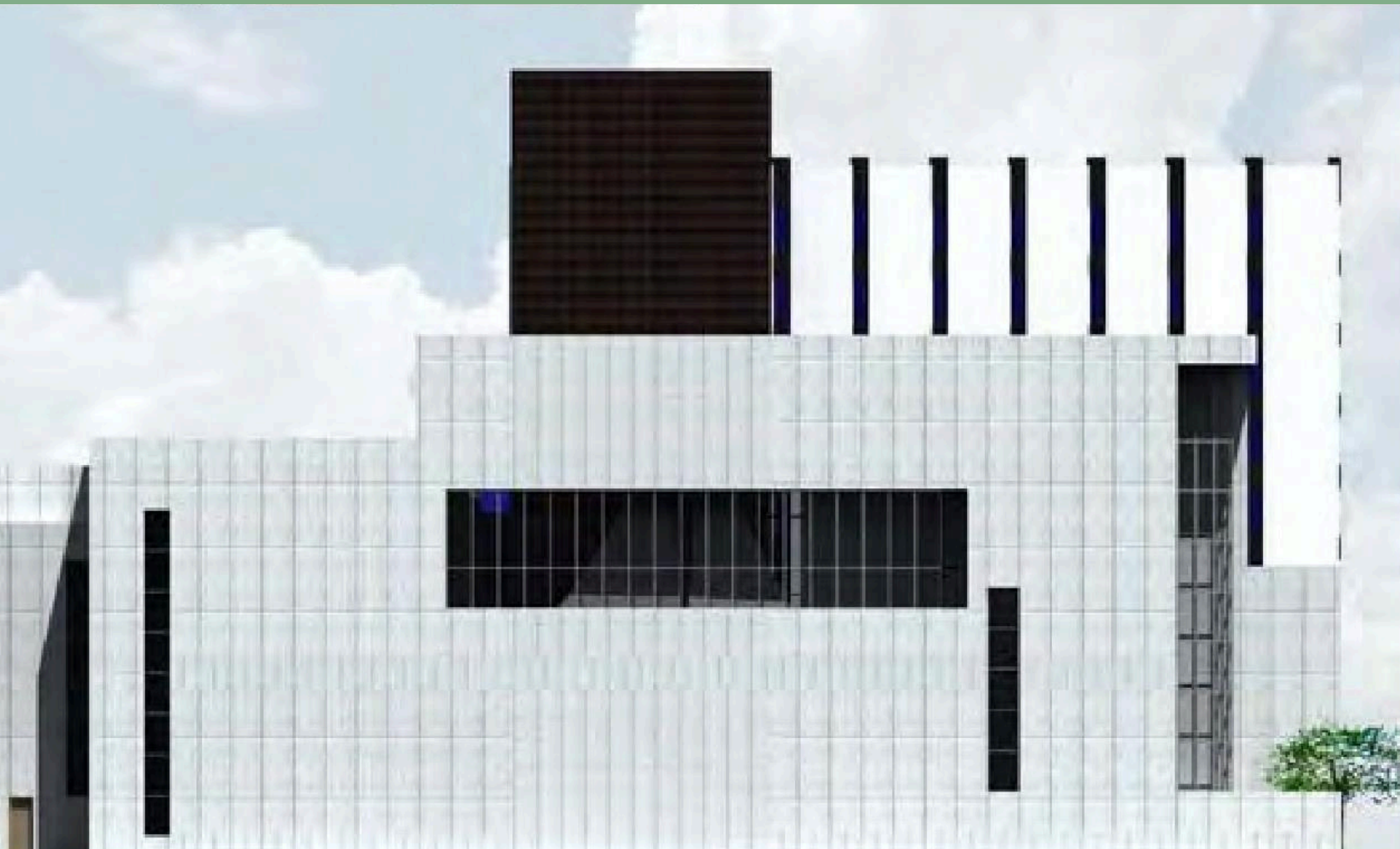
The aim of this project was to create a building prototype for a prospective client. The prototype footprint was approximately 2,000 gross square feet.



FINAL DESIGN



FIGURE IN THE CITY



SOUTH ELEVATION

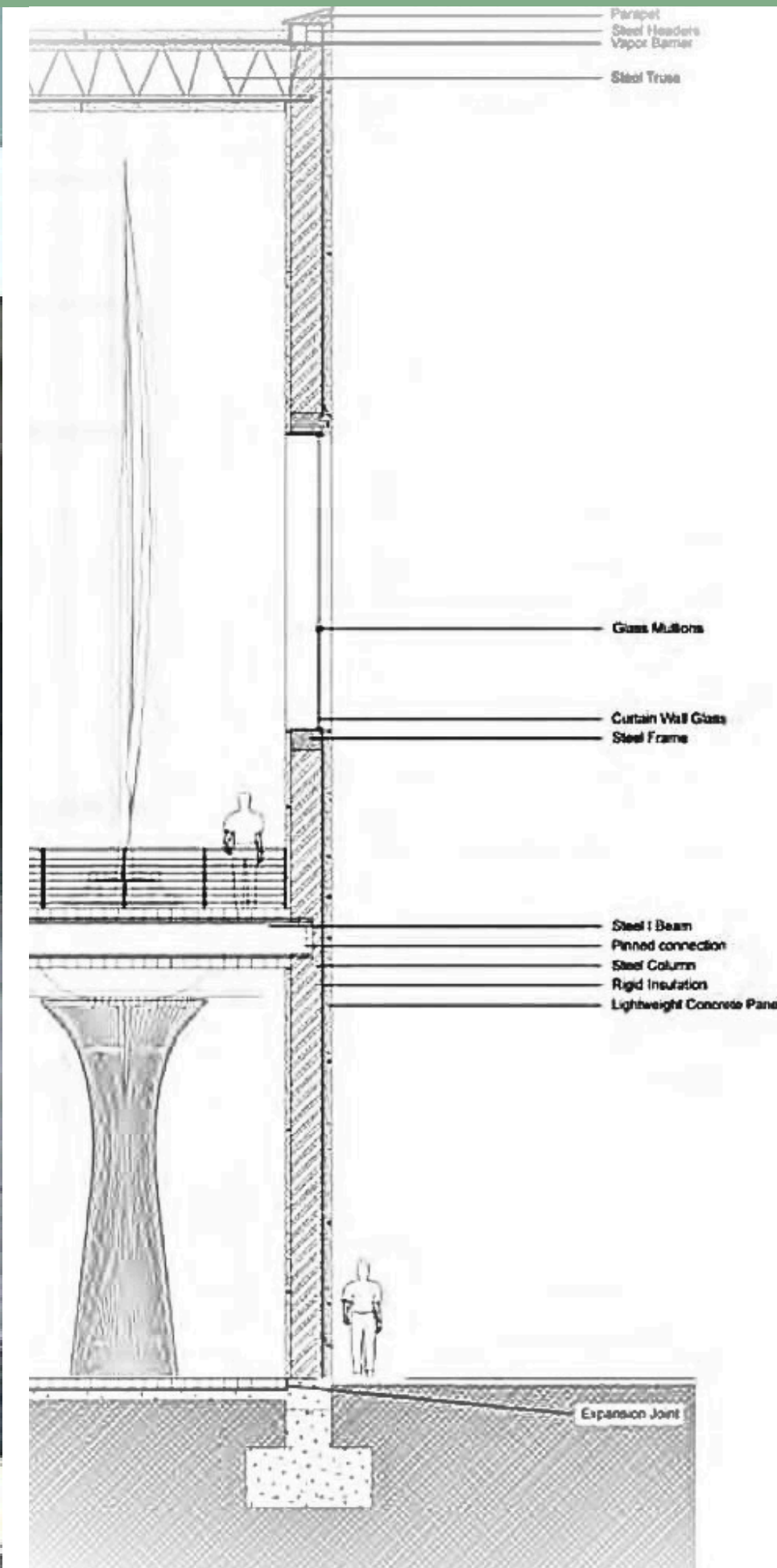
PROJECT OVERVIEW

The primary purpose of this project is to create an appealing and functional space to display a sailboat for sale. This focus served to attract potential buyers and showcase the sailboat in an urban setting. Another program that was considered was that the building would later house architecture studios.



FINAL DESIGN

ROLE: Architectural Designer



BUILDING SECTIONS



HIGH RISE BUILDING CONCEPT

PROJECT OVERVIEW

The design intent of this building was to create a high-rise building in a dense urban setting, such as Chicago or New York.



ROLE: Architectural Designer

A photograph of a modern concrete building with a glass facade, overlaid with a green tint. The building features sharp, angular concrete structures and large glass panels. In the background, a taller, more traditional skyscraper is visible. The overall image has a clean, architectural feel.

CONCRETE BUILDING DESIGN

PROJECT OVERVIEW

Tadao Ando is one of my favorite architects. The way he uses concrete in such an subtle manor is something I tried to accomplish in this building design.



ROLE: Architectural Designer



MIXED USED BUILDING



PRELIMINARY DESIGN

PROJECT OVERVIEW

This building is a mixed use building in the Jeffersonville, IN historic district. The ground level contains a variety of commercial spaces, while the second and third levels contain multi-family units.



FINAL DESIGN



MIXED USE BUILDING



PRELIMINARY DESIGN

PROJECT OVERVIEW

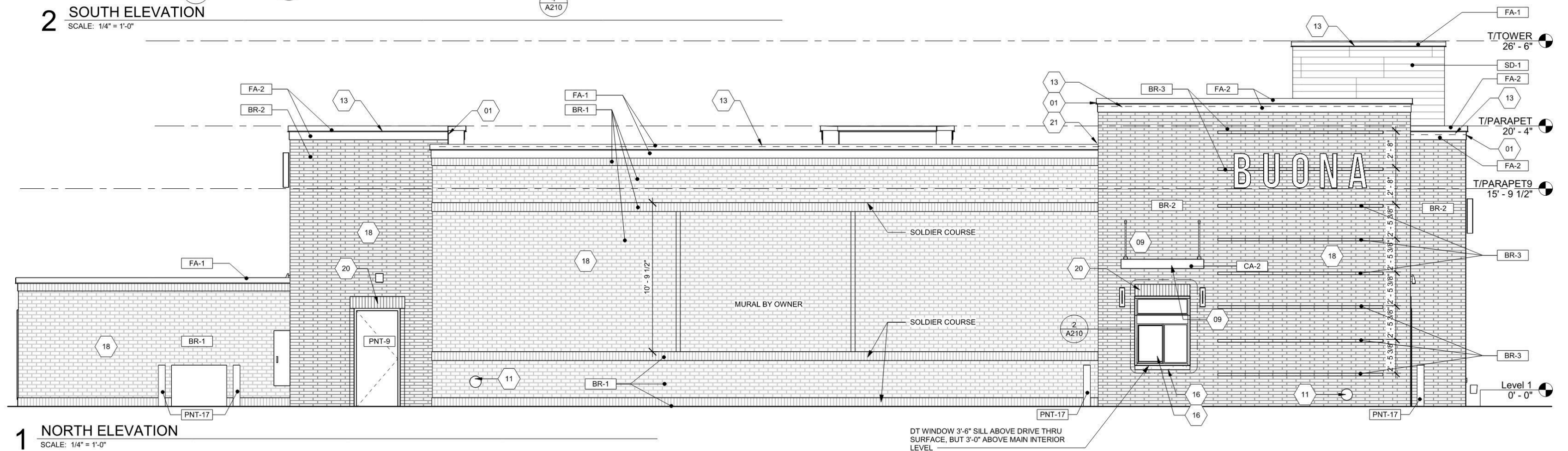
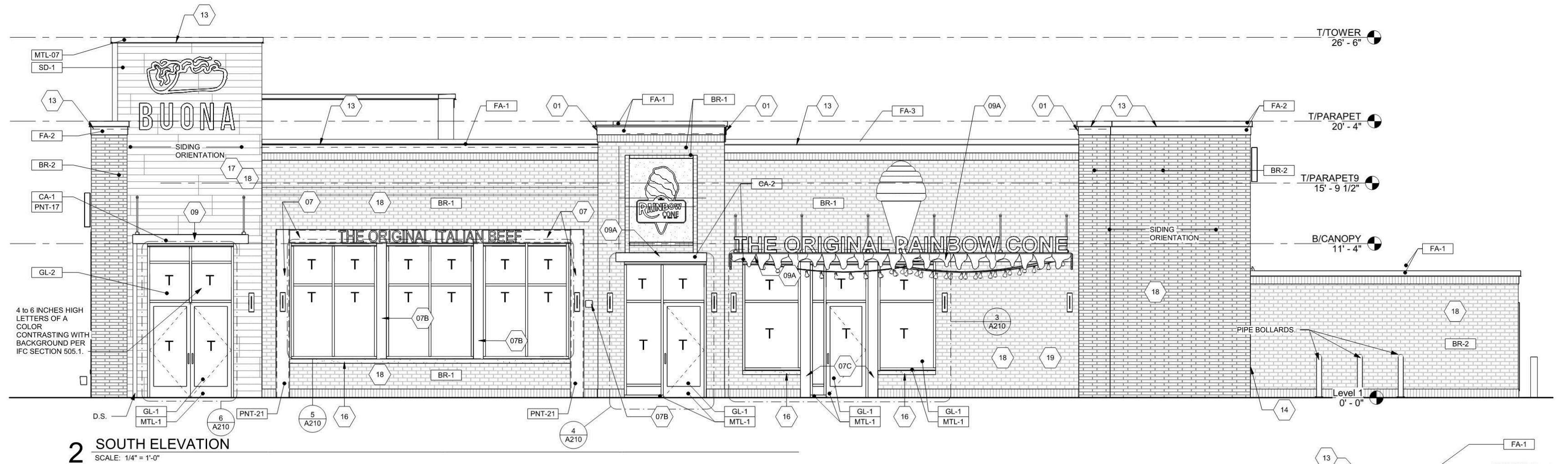
The purpose of this project was to create a building that would have multiple areas for different use groups. The different areas include a bank, coffee shop, and office spaces.

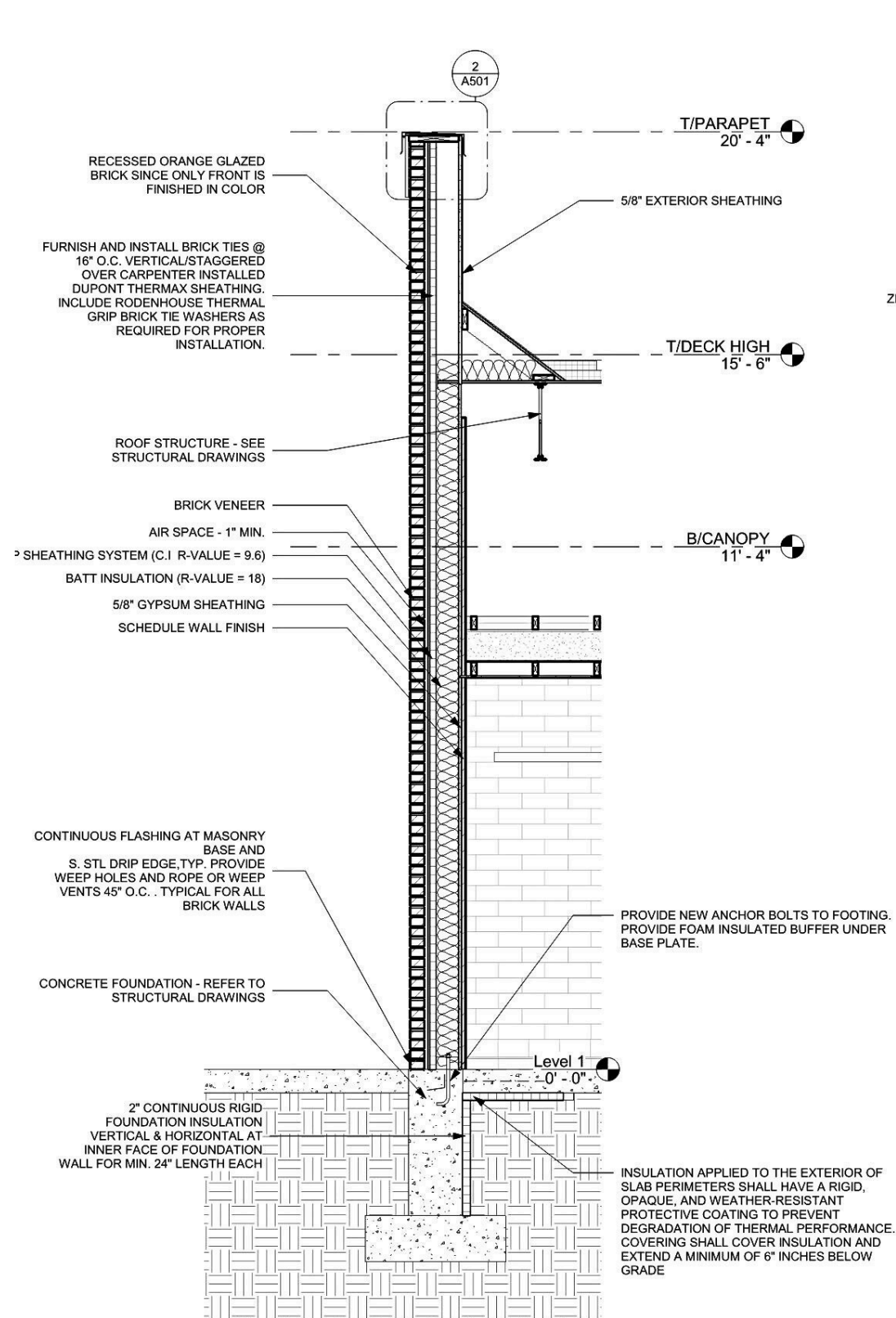


FINAL DESIGN

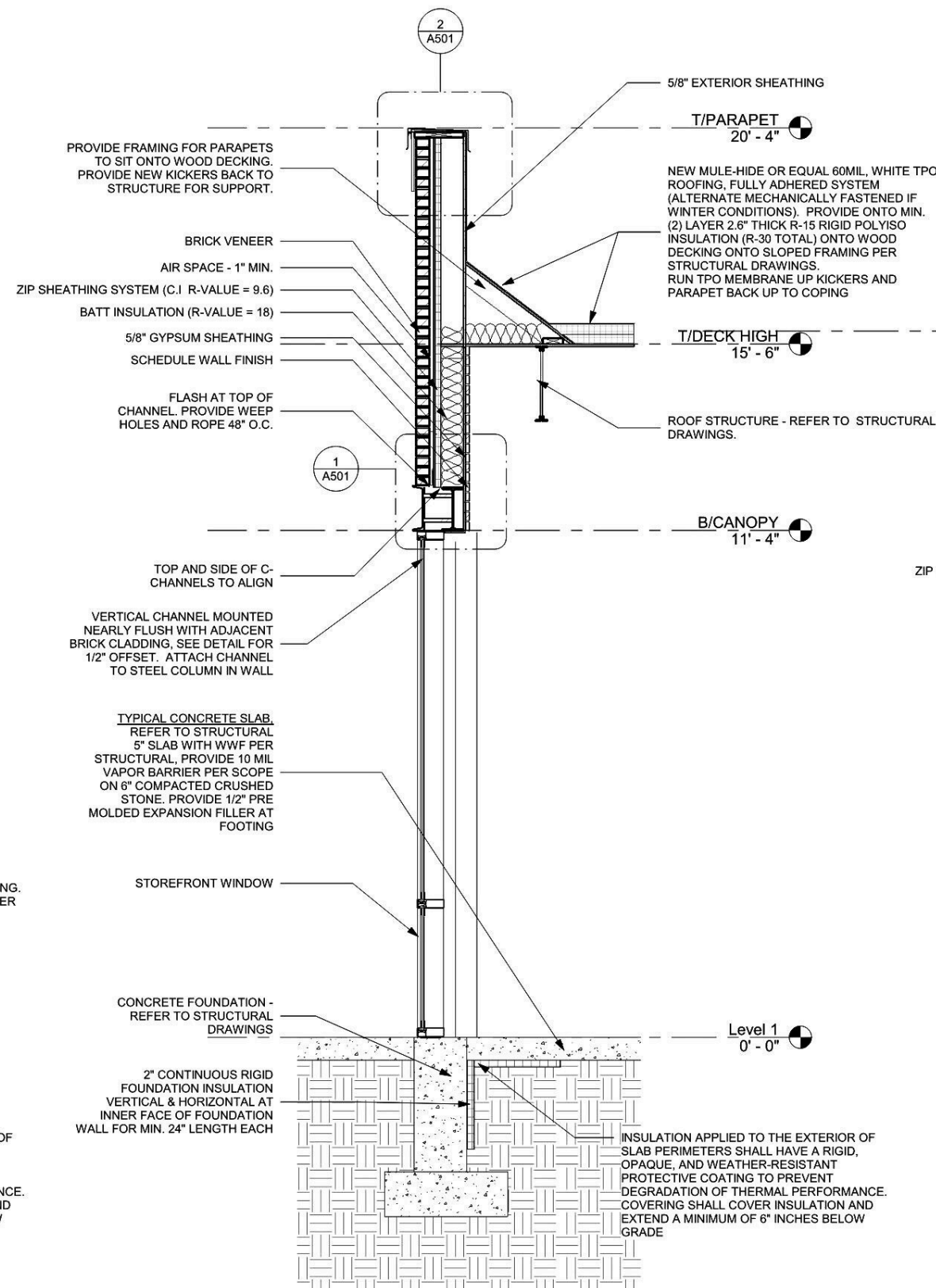
The background is a collage of architectural images. On the left, there's a dark grid pattern. In the center, a lighter grid pattern is visible, with some diagonal lines crossing it. On the right, a large, light-colored geometric structure, possibly a dome or a large window, is shown. A green-bordered white box is positioned in the lower right, containing the text 'TECHNICAL WORK'.

TECHNICAL WORK

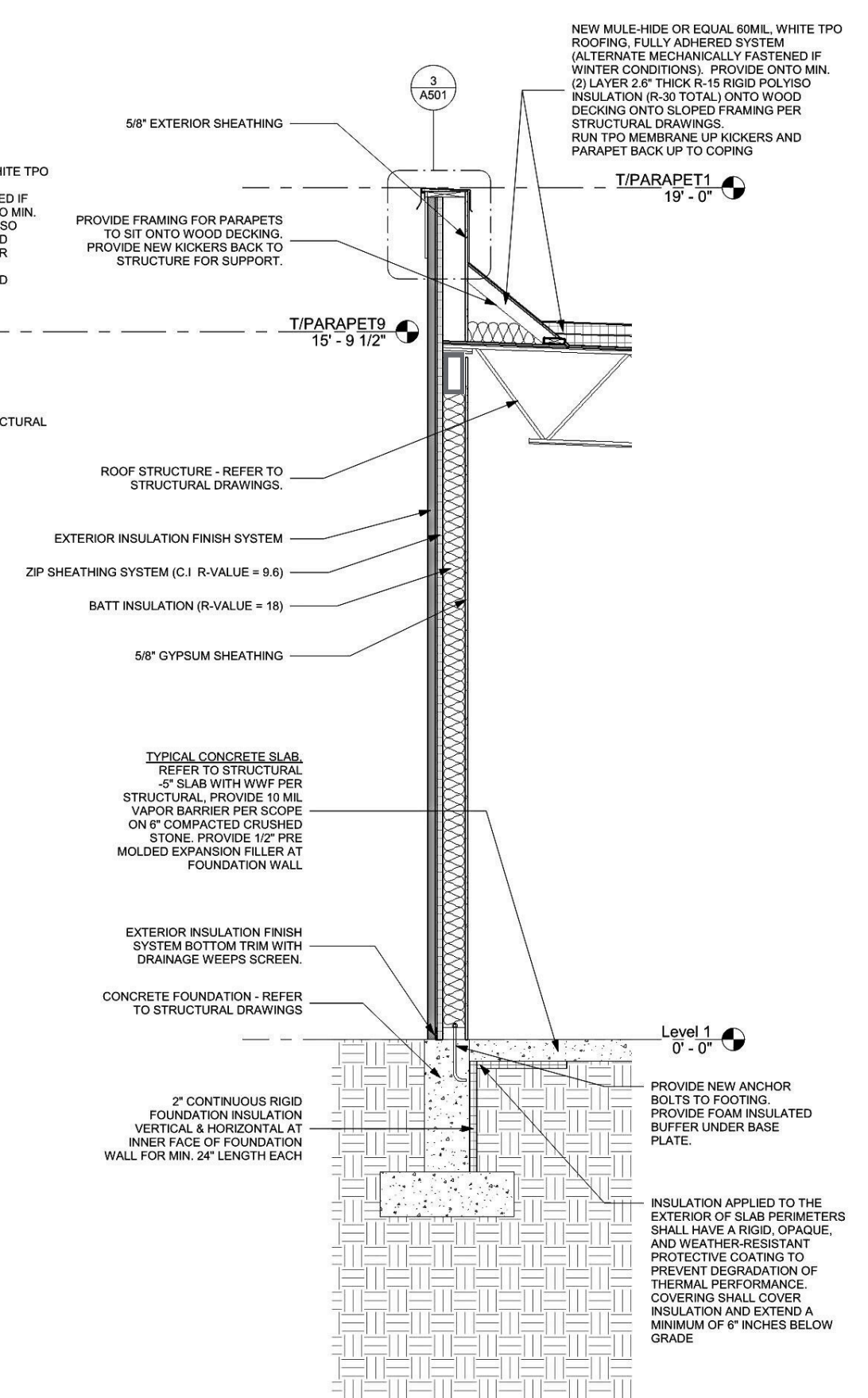




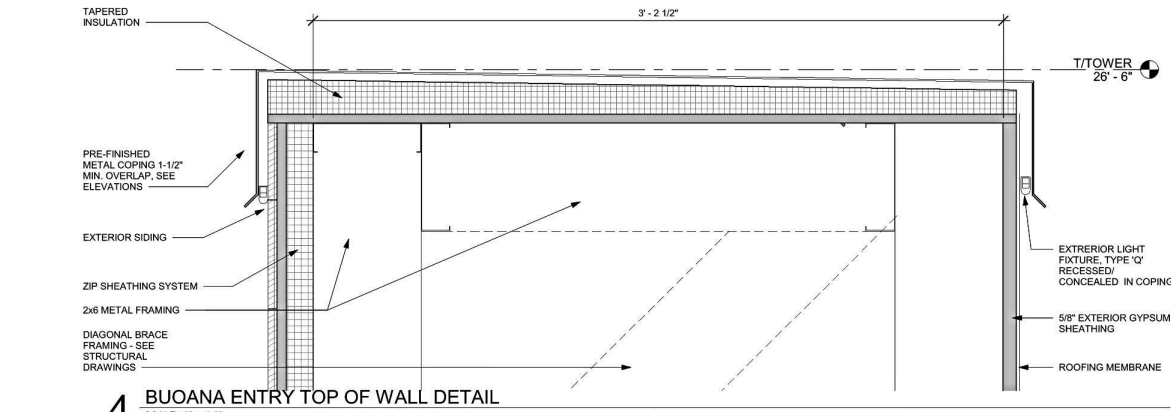
3 BUONA FRONT BRICK
SCALE: 1/2" = 1'-0"



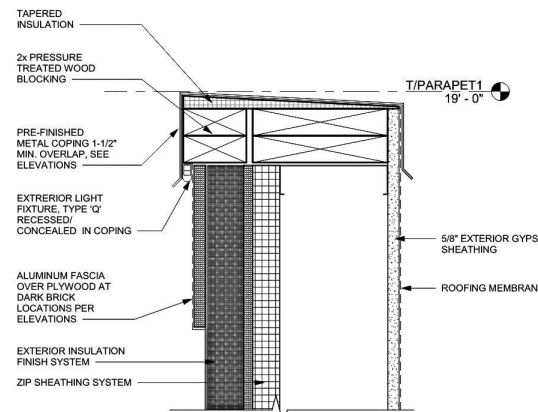
2 WALL SECTION 02 - STOREFRONT
SCALE: 1/2" = 1'-0"



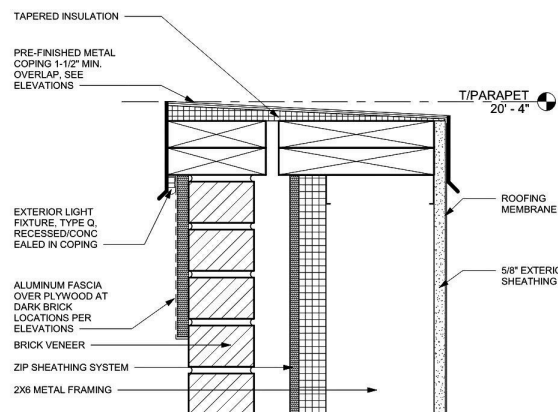
1 WALL SECTION 01- EIFS WALL
SCALE: 1/2" = 1'-0"



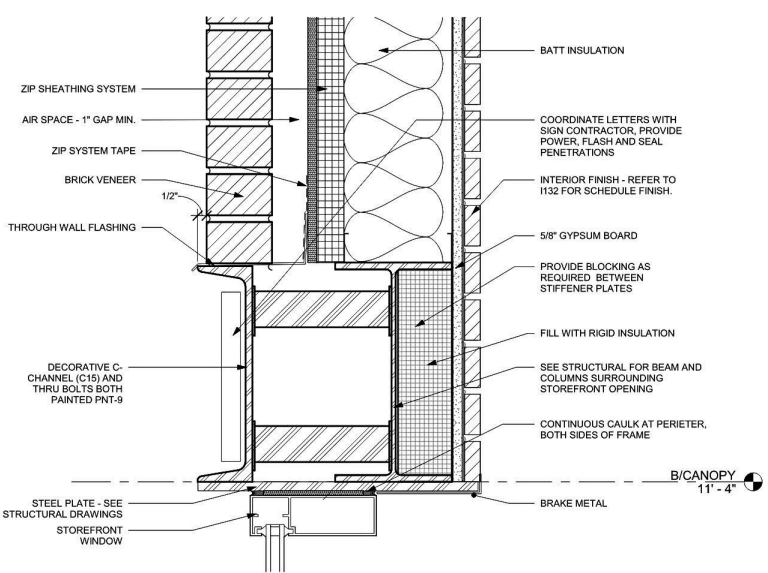
4 BUONA ENTRY TOP OF WALL DETAIL
SCALE: 3" = 1'-0"



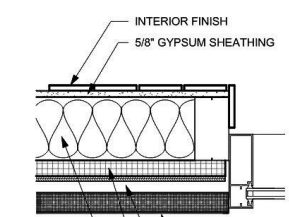
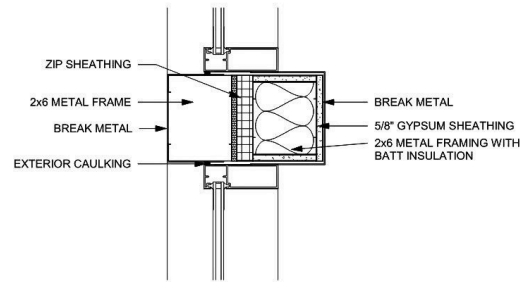
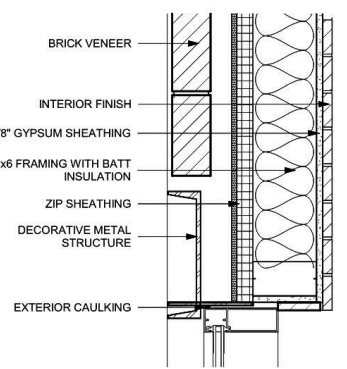
3 ENLARGED EIPS PARAPET
SCALE: 3" = 1'-0"



2 ENLARGED BRICK PARAPET
SCALE: 3" = 1'-0"



1 ENLARGED C-CHANNEL STOREFRONT HEADER
SCALE: 3" = 1'-0"



2 RAINBOW CONE STOREFRONT PLAN
SCALE: 1 1/2" = 1'-0"

