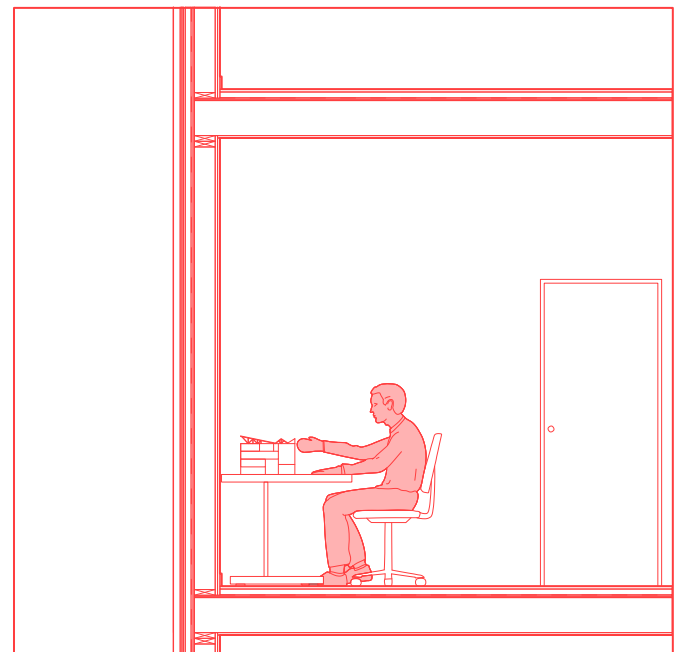
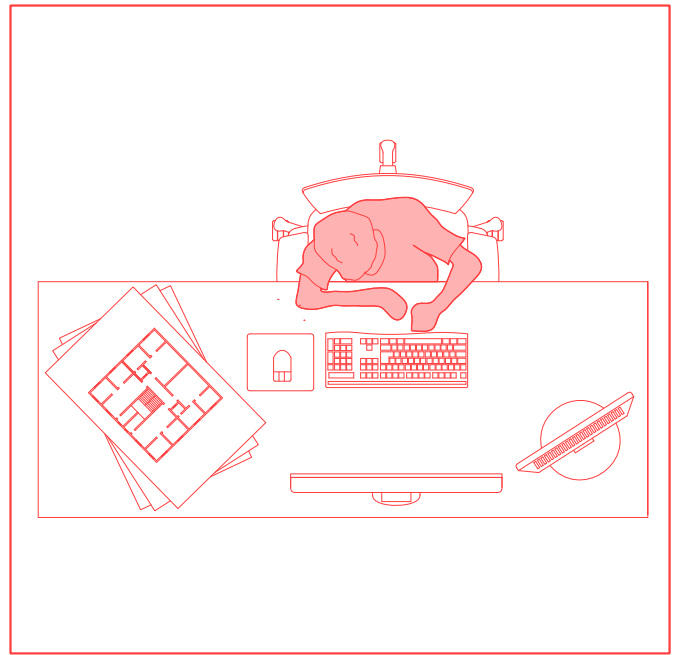


# PORT FOLIO

ARCHITECTURAL



# Spencer Salcedo



## My Contacts

spencersalcedo13@gmail.com



(562) 549- 8189



<https://www.linkedin.com/in/spencer-salcedo/>



## Experience

### Corporate and Architecture Intern

Sep. 2025- Aug. 2025, RDC-S111

Worked on a range of projects including data analysis and project updates, digital fabrication with laser cutting and 3D printing, creating graphics for internal and external use, and assisting with renderings and visual presentations.

### Architecture Tutor

Sep. 2022- Jun. 2023, Long Beach City College

Assisting first year architecture students with 3D programs like Rhinoceros3D; help with Adobe Illustrator and Photoshop, guidance with portfolios and spreadsheets, assisting with visuals of architectural drawings

### Supervisor Club Repair/ Cashier

Nov. 2020- Aug. 2023, Roger Dunn Golf Shop

Assisting customers with club repairs or other equipment; managed coworkers; make orders for products and equipment as needed

### Caddie/ Outdoor Attendant

Jul. 2020- Sep. 2020, Old Baldy Club

Assisting residents and members of the club with their everyday golfing needs; provided maintenance to multiple parts of the course; worked as a team and with supervisors

## About Me

I am an architecture student at Cal Poly Pomona. This portfolio contains an array of architecture projects that reflect on my design philosophy, technical proficiency and vision. Through various perspectives I evaluate space and the different experiences within the spaces. Space creates different values to the one perceiving it and create different experiences for these different people.

Each project is a testament to my commitment in discovering innovative and sustainable design. From initial concept sketches to completed structures.

From conceptual thinking to fully fleshed projects, discovering the thinking process in how to create unique floor plans, massing, and facades.

## Education

### California Polytechnic State University, Pomona

Enrolled in Architecture, General Ed

2023- Expected Graduation 2027

### Long Beach City College

Enrolled in Business Administration, General Ed

2021- Expected Graduation 2026

### Millikan High School

General Education

Graduated 2021

## Skills

Problem Solving

Adaptability

Creative

Resourceful

## Softwares

- Rhinoceros 3D
- Adobe Illustrator
- Adobe Photoshop
- Adobe InDesign
- Grasshopper for Rhino
- V-Ray
- Enscape
- Google Docs/ sheets
- Learning Revit

# 01

## 635 Mateo

Adaptive Reuse- Food Hall  
Cal Poly Pomona, Fall 2025

# 02

## Barrio Framework

Mixed Use- Housing-led  
Cal Poly Pomona, Spring 2025

# 03

## Mt. Wilson Research Facility

Mixed Use- Housing-led  
Cal Poly Pomona, Fall 2024

# 04

## The New School of Architecture

Education Facility  
Cal Poly Pomona, Spring 2024

# 05

## Rainbow Machine

Art Installation  
Studio 111- Collaboration with other creatives

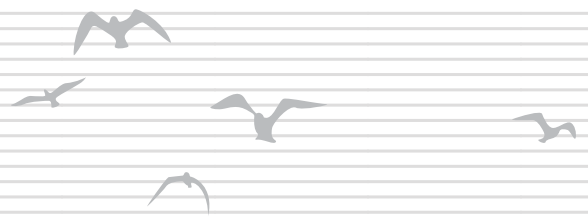
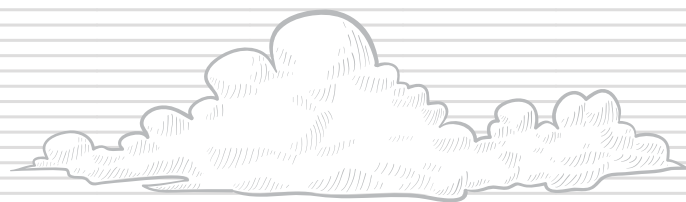
# \*\*

Digital Fabrication

Model Making



01



# 635 Mateo

Fall 2025

Adaptive Reuse- Food Hall

Group Project w/ Lauryn Blank

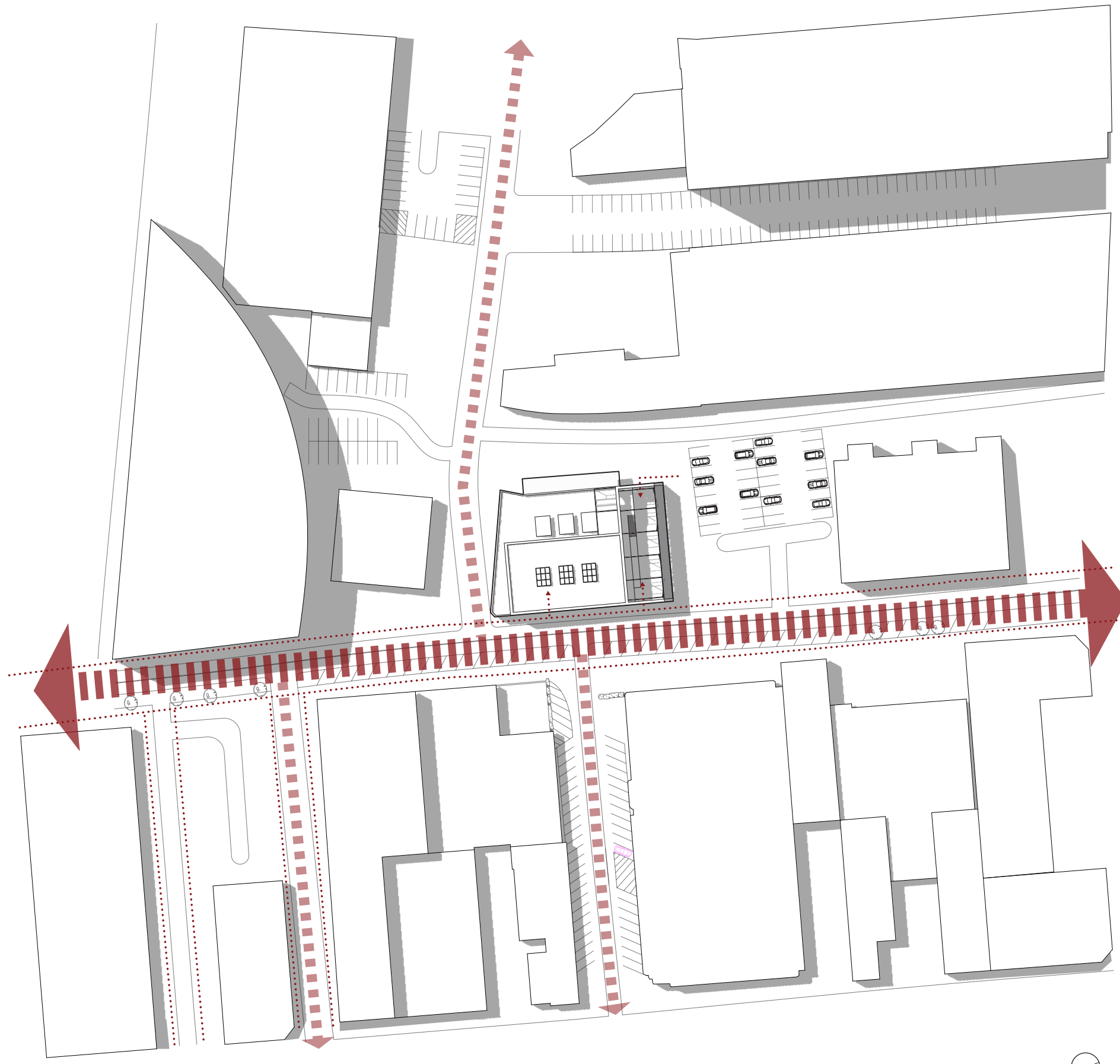
This project transforms a former industrial building into a contemporary market food hall, preserving the integrity of its historic structure while adapting it to meet modern social needs. The design embraces the site's industrial legacy with its rhythm, scale, and material presence and builds upon it with thoughtful, respectful interventions. New additions echo the building's original character through complementary brick-laying techniques, compatible modular materials, and subtle reinterpretations of its ornamental details. The design maintains the site's industrial legacy by using the existing framework, material rhythm, and structural bays to shape vendor spaces and circulation.

Programmatically, the structure supports a diverse range of vendors, from small local artisans to larger culinary operations with dedicated seating. The industrial framework provides both authenticity and flexibility, allowing the space to adapt to changing needs while retaining its historic character.

By blending historic preservation with thoughtful adaptation, the project creates a vibrant social hub that celebrates heritage while supporting the evolving identity and economic life of the downtown district.

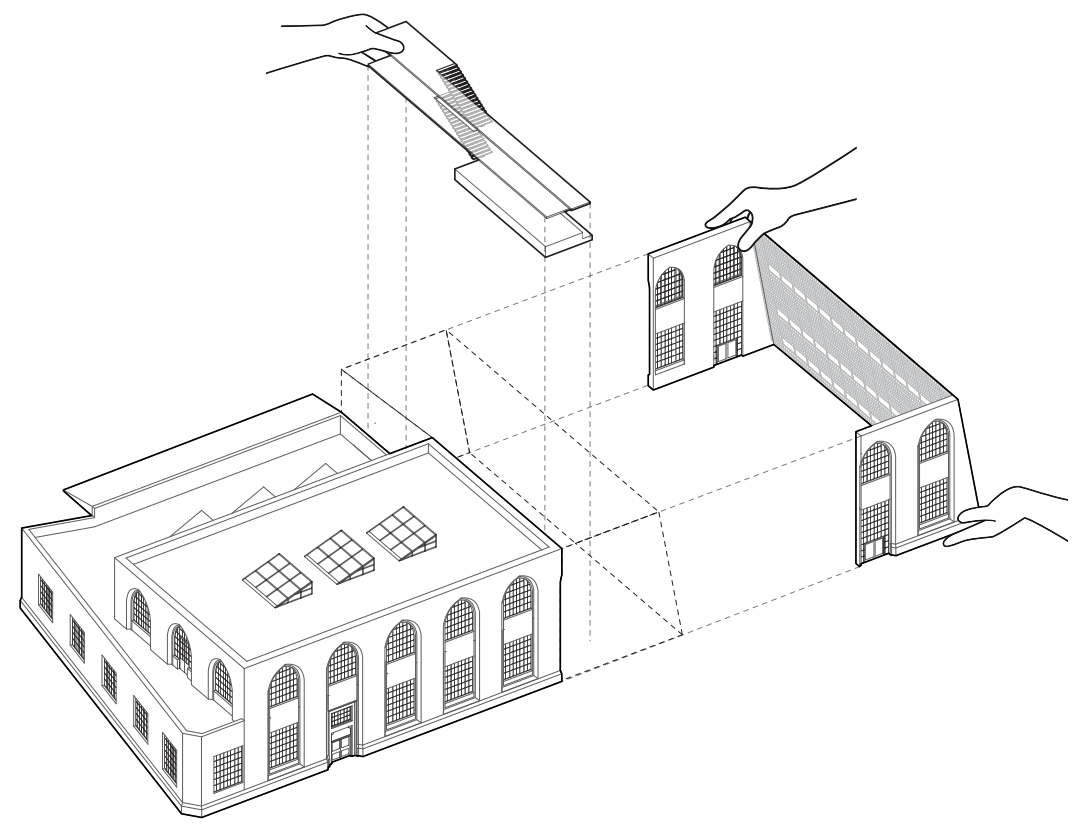


Model Photo



Vehical Access  
 Pedestrian Access

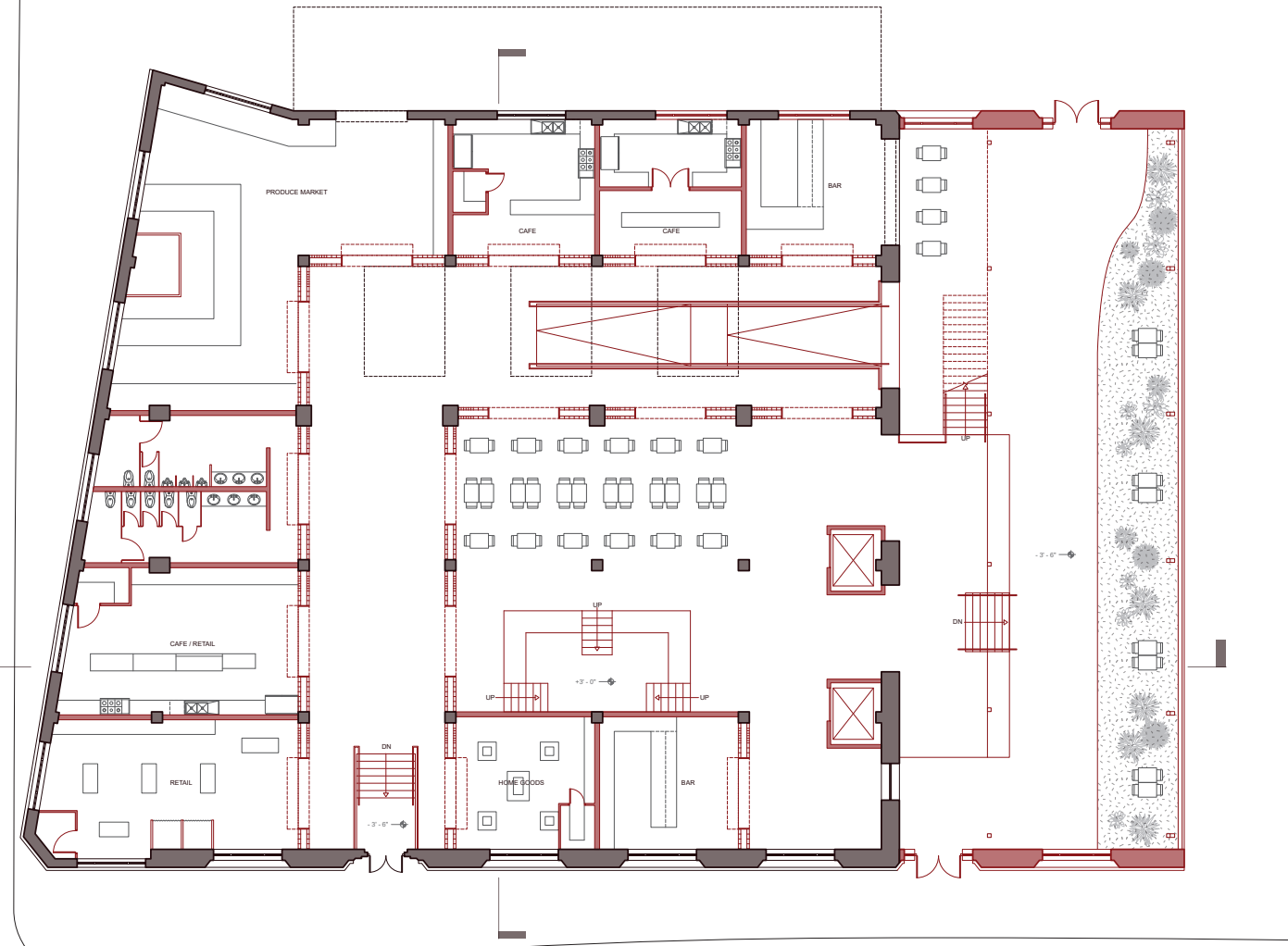
Site Plan



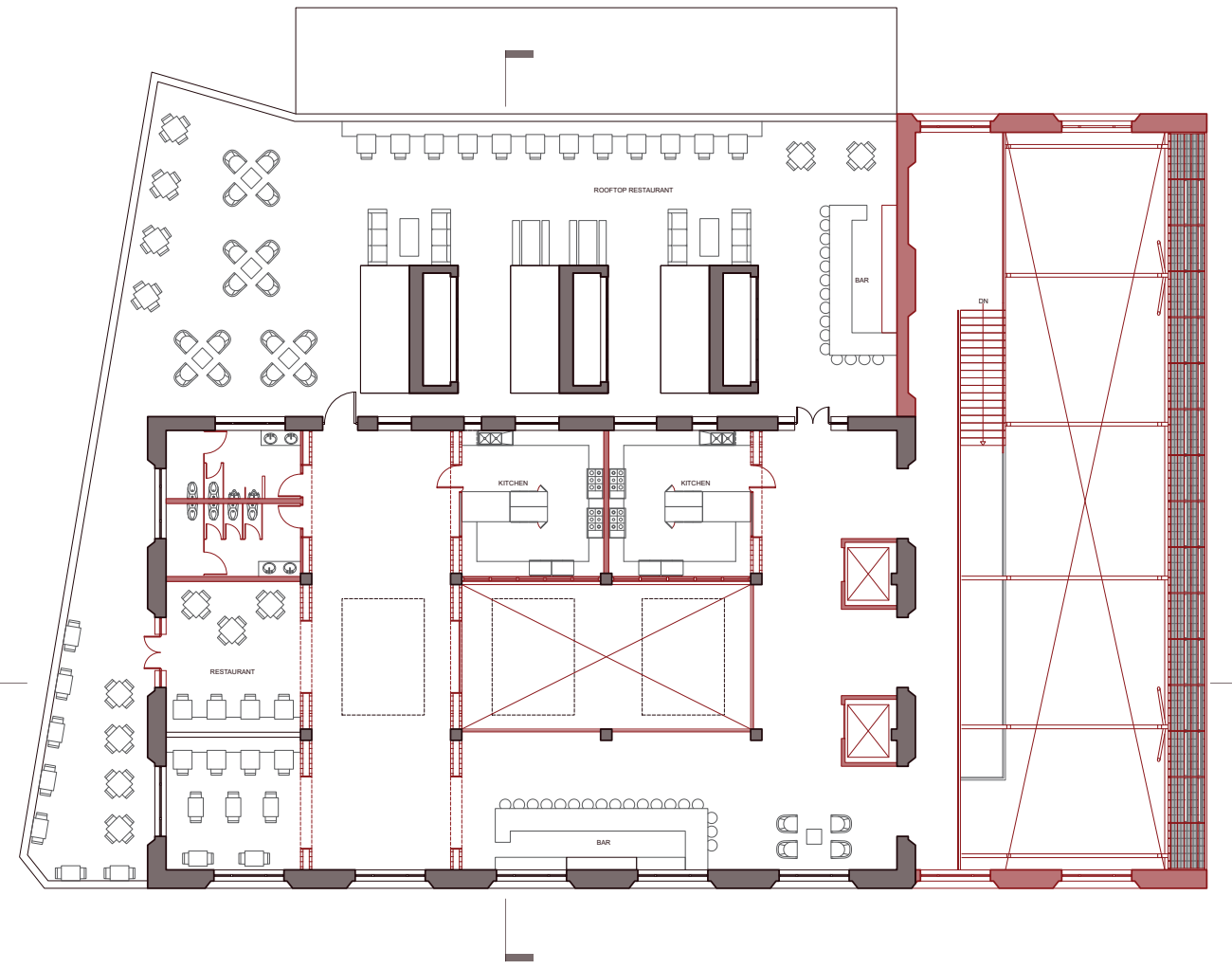
Additions Diagram ( Pavilion Add-On)

The adjacent pavilion, developed in an earlier phase, continues to shape the experience by offering a semi-sheltered outdoor retreat that becomes an active social extension of the food hall. Users are circulated through the pavilion, which allows them to easily experience and pass through the interior and exterior. As visitors, workers, vendors, and events animate the site, the relationship between indoor and outdoor spaces encourages casual gathering, community programming, and cultural exchange.

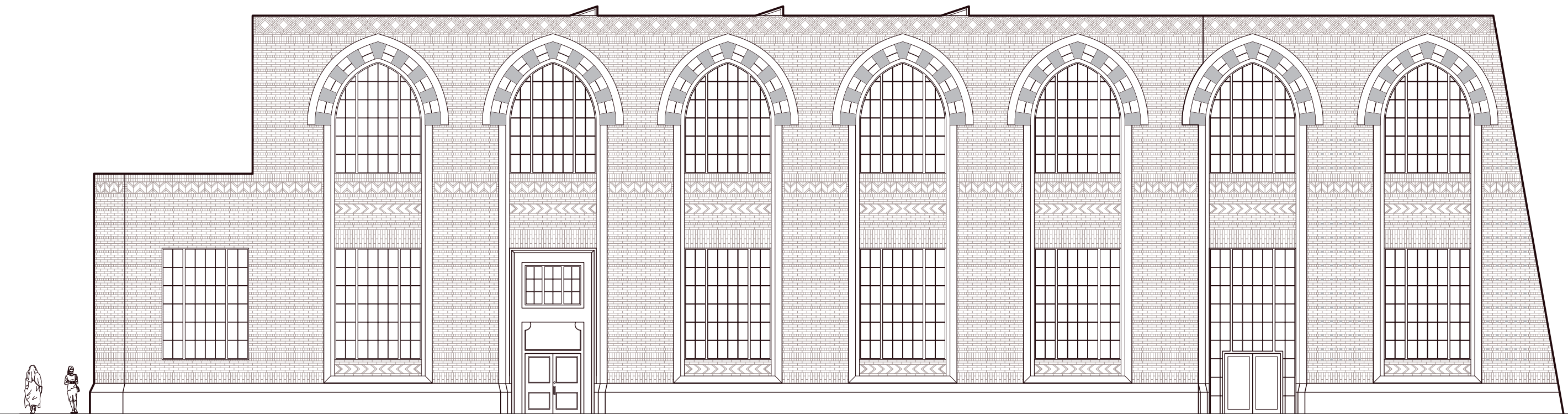




First Floor

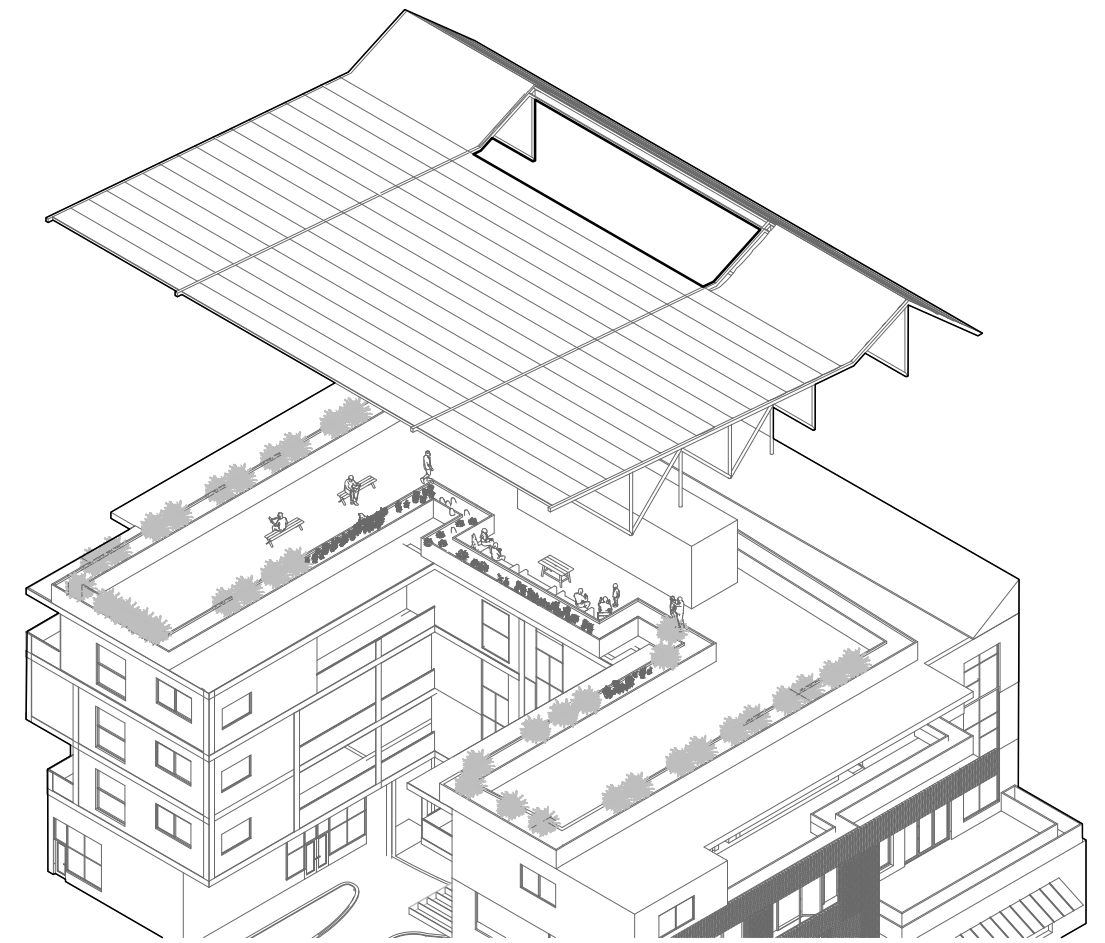


Second Floor



East Elevation



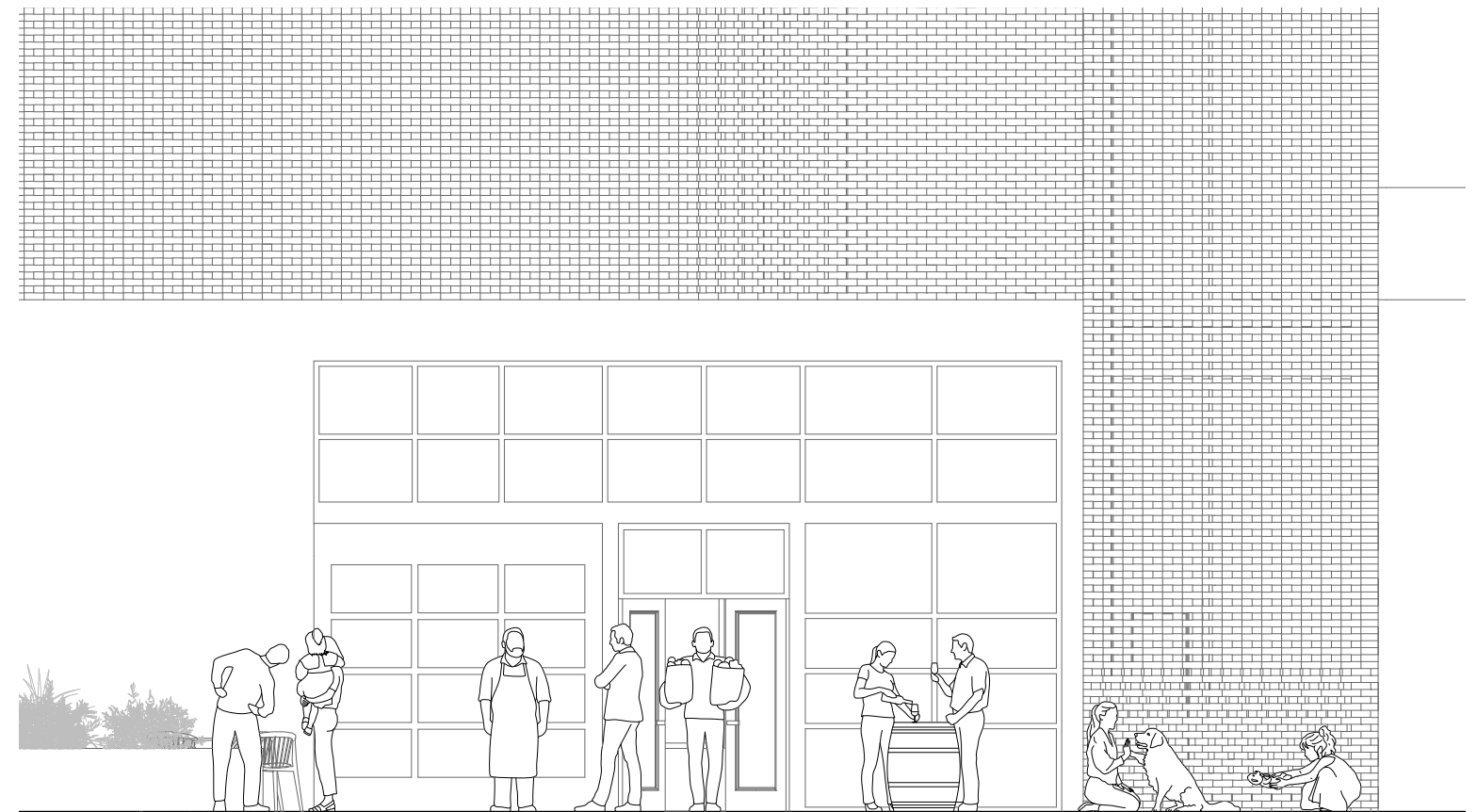


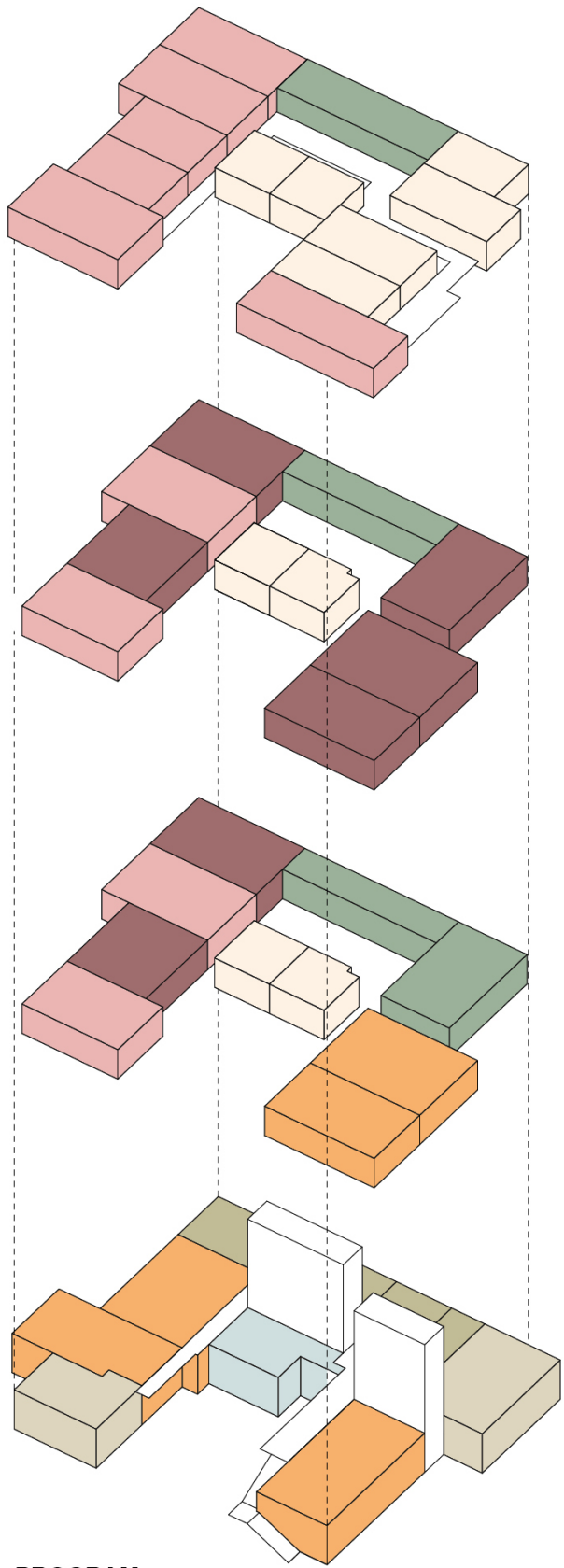
# Barrio Framework

Spring 2025  
Mixed Use- Housing-led

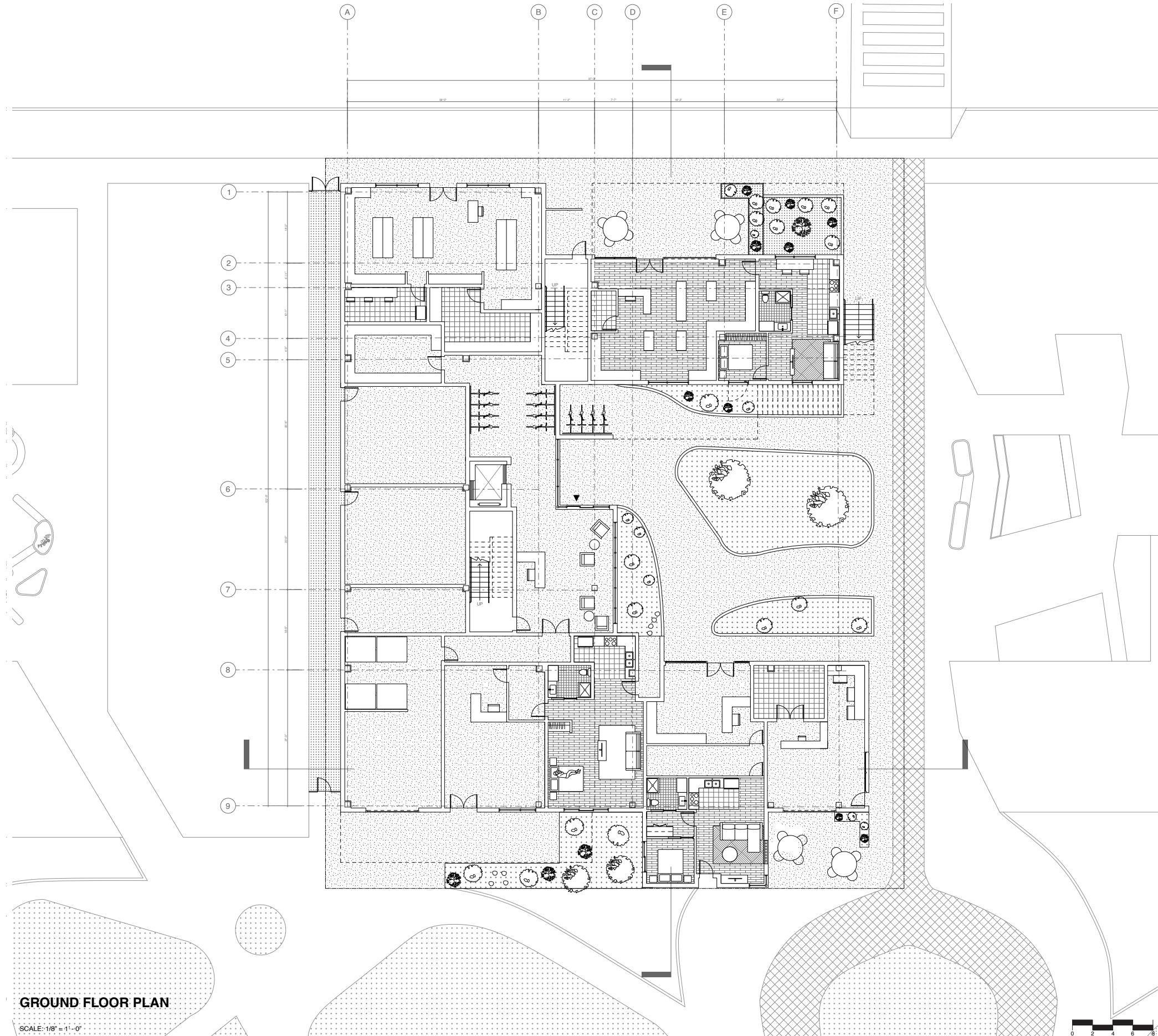
This mixed-use, housing-led development in Santa Ana is designed to foster community connectivity while addressing critical urban needs. Complementing the residential component are carefully curated commercial spaces designed to promote everyday interaction and convenience, with a particular emphasis on addressing the neighborhood's status as a food desert. A full-service, community-oriented grocery program anchors the ground level. More than a retail offering, this space serves as a local resource center for nutrition education, job creation, and access to fresh, affordable food, directly addressing food insecurity and promoting long-term health outcomes for the community.

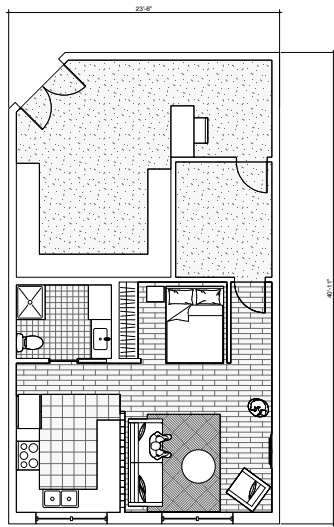
The residential program integrates a range of unit types to accommodate diverse households, supported by shared indoor and outdoor amenities that promote social interaction. Exterior brick cladding employs a dynamic rotating pattern that references Santa Ana's industrial heritage while optimizing solar performance through passive shading strategies. Internally, exposed brick surfaces enhance acoustic absorption in communal areas, improving interior sound quality. Ground-floor retail and civic programming are oriented to activate the public realm and encourage engagement with the newly developed train station and broader neighborhood.



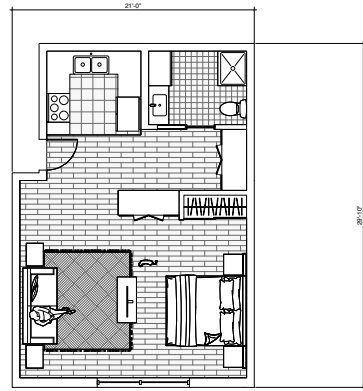
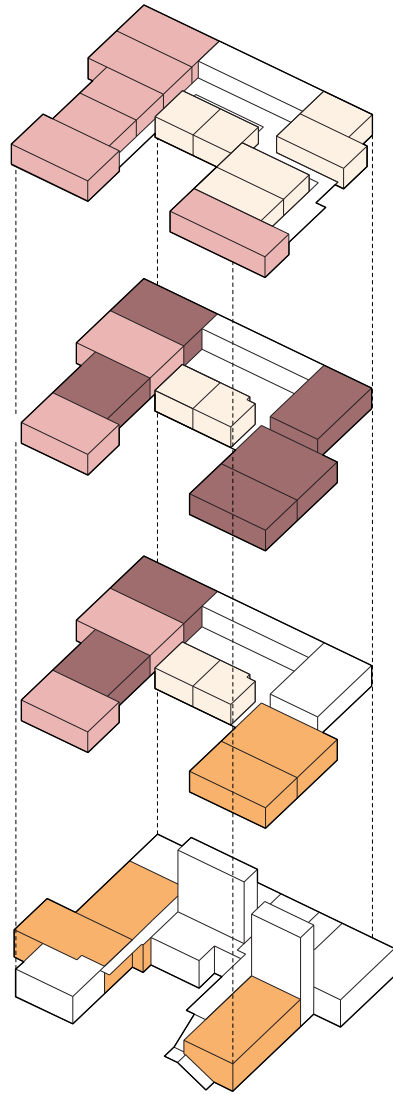


- PROGRAM**
- RETAIL
  - LIVE / WORK
  - SERVICE
  - LOBBY
  - COMMUNITY SPACE
  - 2 BED
  - 1 BED
  - STUDIO

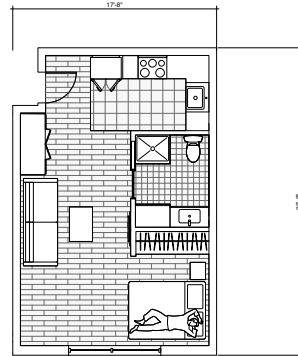




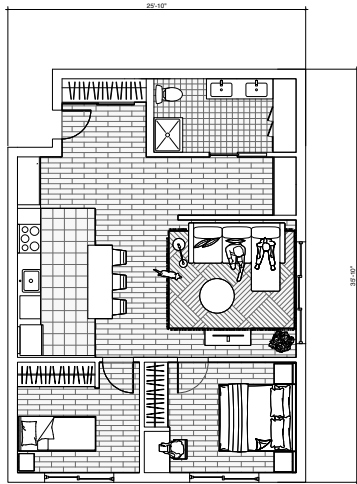
**Live/Work**  
1000 SQ FT



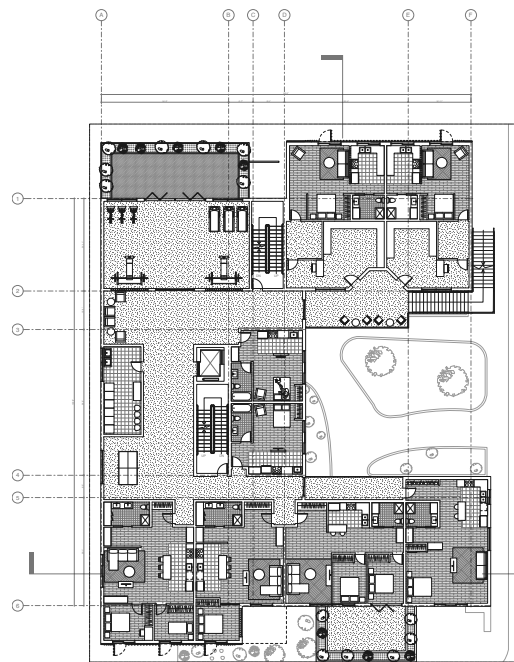
**1 Bed**  
625 SQ FT



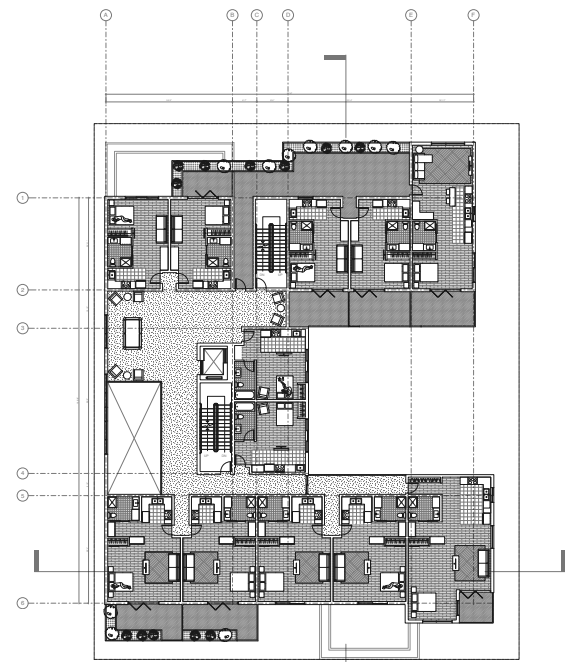
**Studio**  
475 SQ FT



**2 Bed**  
950 SQ FT



2nd Floor



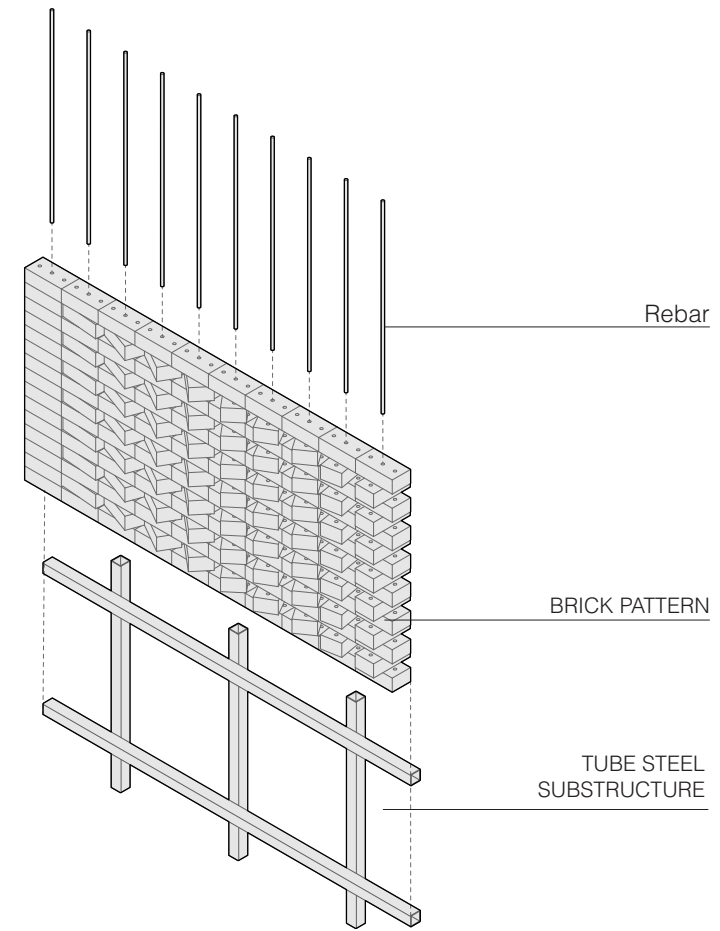
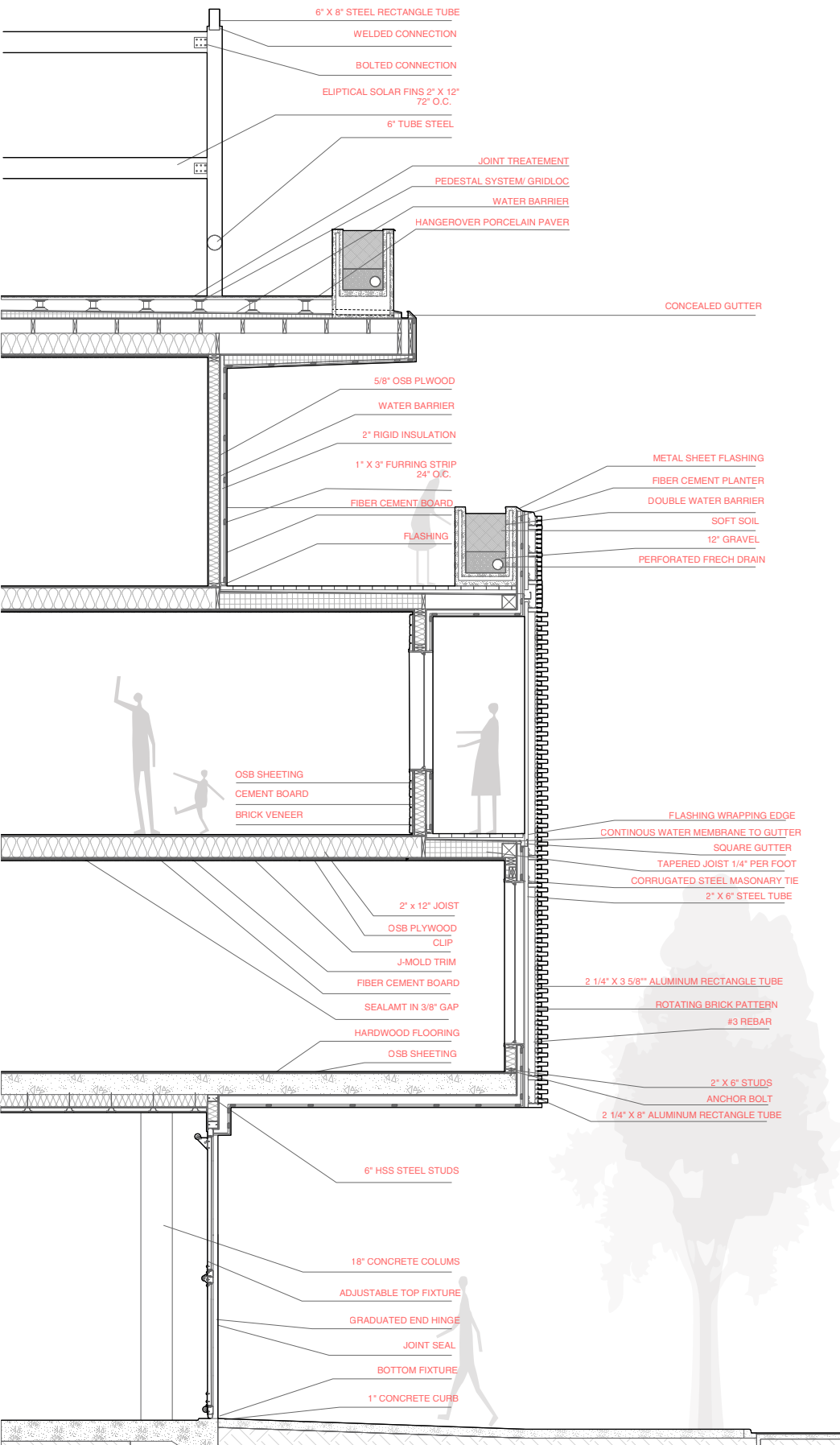
5th Floor



COMMUNAL SPACE ON ROOFTOP



INTERIOR OF LIVE/WORK



SOUTH ELEVATION



WEST ELEVATION





# Mt. Wilson Research Facility

Fall 2024

Mixed Use- Housing-led

Situated along the dramatic edge of Mt. Wilson, this research facility is dedicated to the exploration of fractal mathematics and its expressions in natural and cosmic systems. The design draws inspiration from the self-similar geometries found in the surrounding rock formations—patterns that are echoed at vastly different scales in clouds, plant growth, and the structure of the universe.

The building's façade is clad in custom-cast GFRC (Glass Fiber Reinforced Concrete) panels, whose fractal-inspired geometry references the site's geology while conveying a sense of permanence and stability—essential qualities for a structure poised at the threshold between earth and sky.

To reinforce its celestial focus, the facility incorporates strategically angled skylights calibrated to key astronomical coordinates. These apertures are designed to frame specific constellations, solar alignments, and planetary paths, enhancing observational opportunities for researchers and visitors alike while connecting interior spaces to the broader rhythms of the cosmos.

Programmatically, the facility includes advanced research laboratories, residential quarters for scientists, and a public-facing outdoor amphitheater for lectures and celestial observation. It serves as both a grounded architectural expression of natural order and a launch point for inquiry into the vast, patterned complexity of the cosmos.

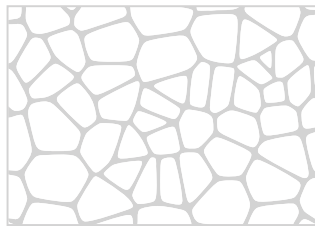
## Fractal Patterns

Research

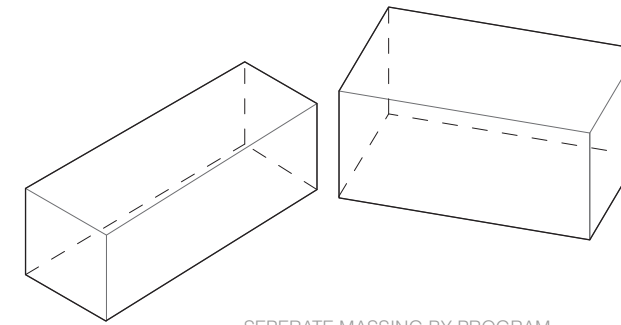
Fractals are intricate geometric forms defined by self-similarity, meaning their structure is composed of smaller copies of the whole, repeating at varying scales. Mathematically, fractals are described by recursive or iterative processes—such as those used to generate the Mandelbrot and Julia sets—resulting in shapes that defy traditional Euclidean geometry. Unlike a line, square, or cube, a fractal can possess a non-integer, or fractional, dimension—hence the name. This quality allows fractals to model complex, irregular forms that exist between dimensions.

In nature, fractals are found in systems that grow, evolve, or erode across scales. Examples include the branching of trees, the structure of lungs and blood vessels, the jagged outlines of coastlines, mountain ranges, cloud formations, lightning bolts, and even the clustering of galaxies. These patterns are not only visually compelling but also functionally efficient, enabling optimized distribution, surface area, or energy flow.

Fractals offer a powerful framework for understanding complexity through repetition and scaling. Their presence across disciplines, from biology and geology to cosmology, reveals deep connections between mathematics and the natural world.

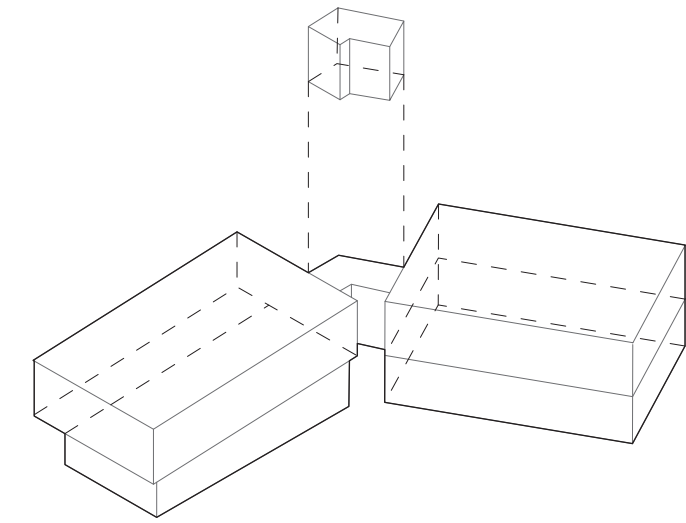


1



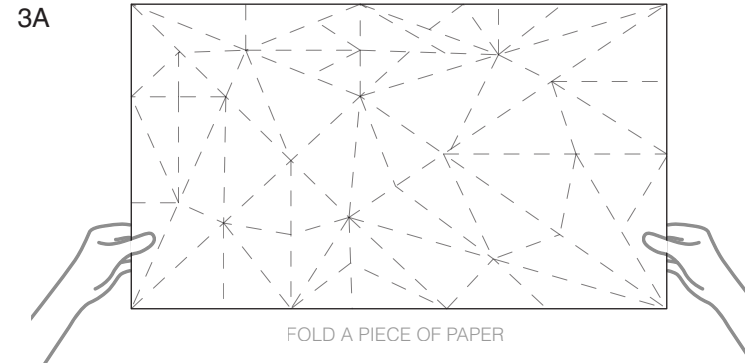
SEPERATE MASSING BY PROGRAM

2



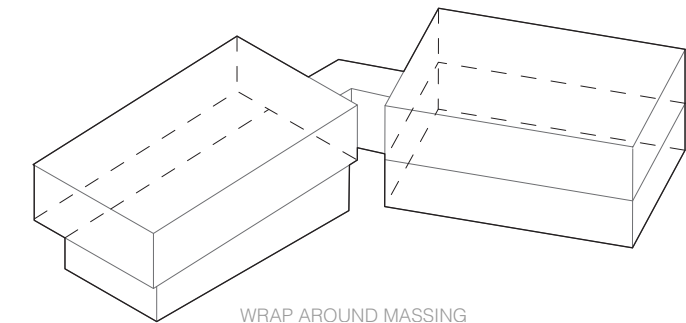
BRIDGE + SEPERATE STORIES

3A



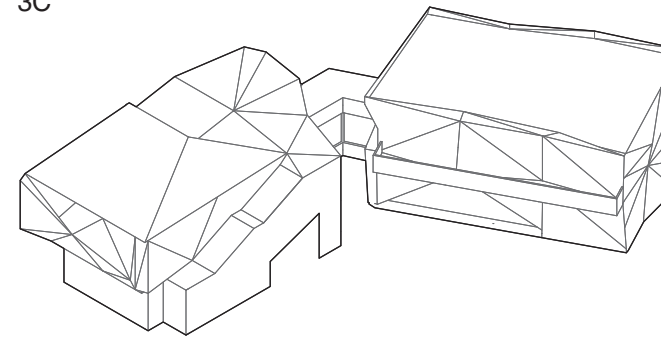
FOLD A PIECE OF PAPER

3B

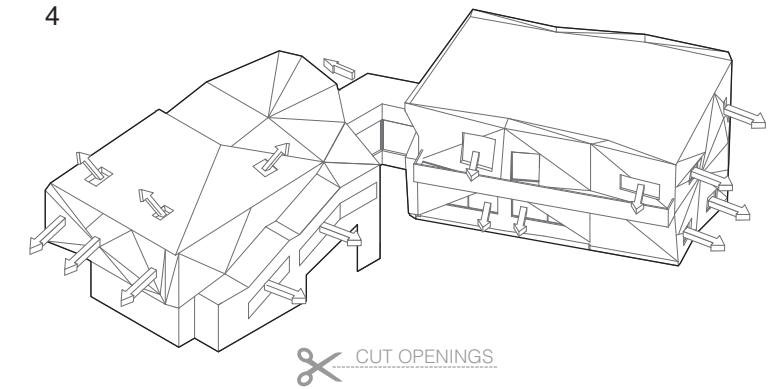


WRAP AROUND MASSING

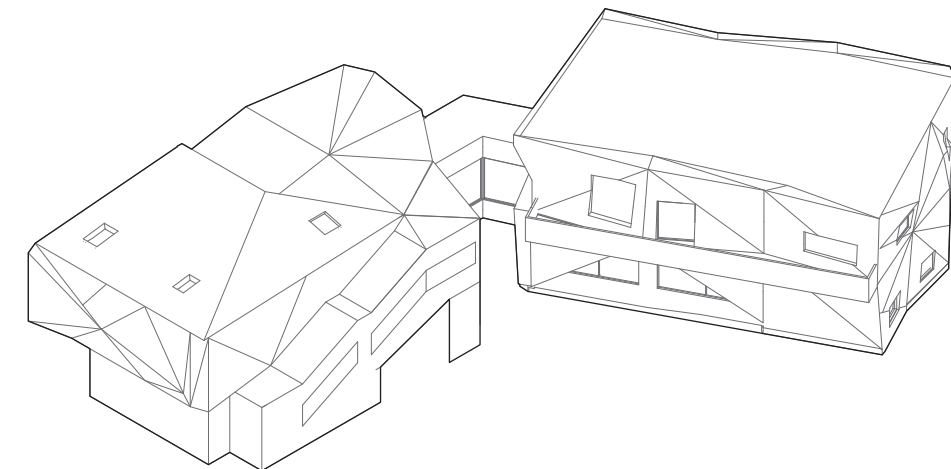
3C

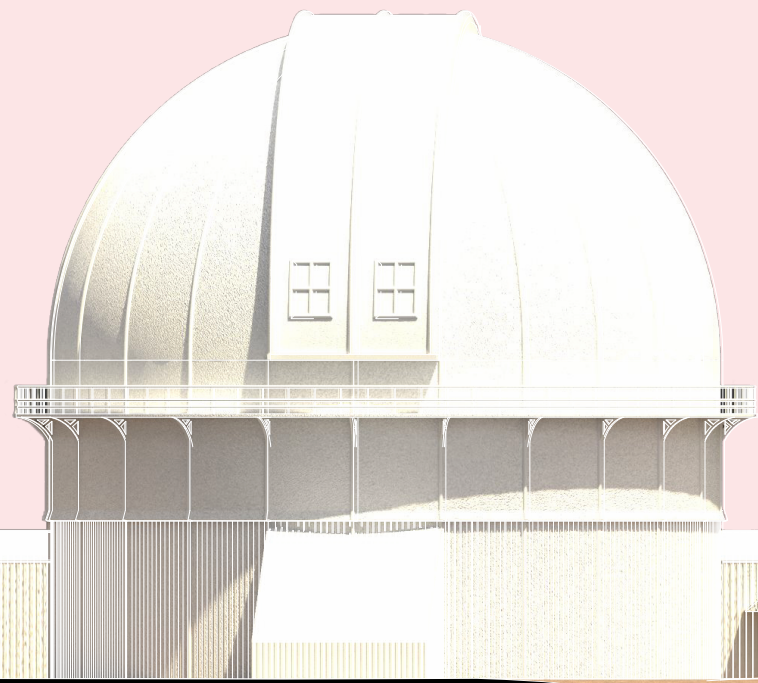


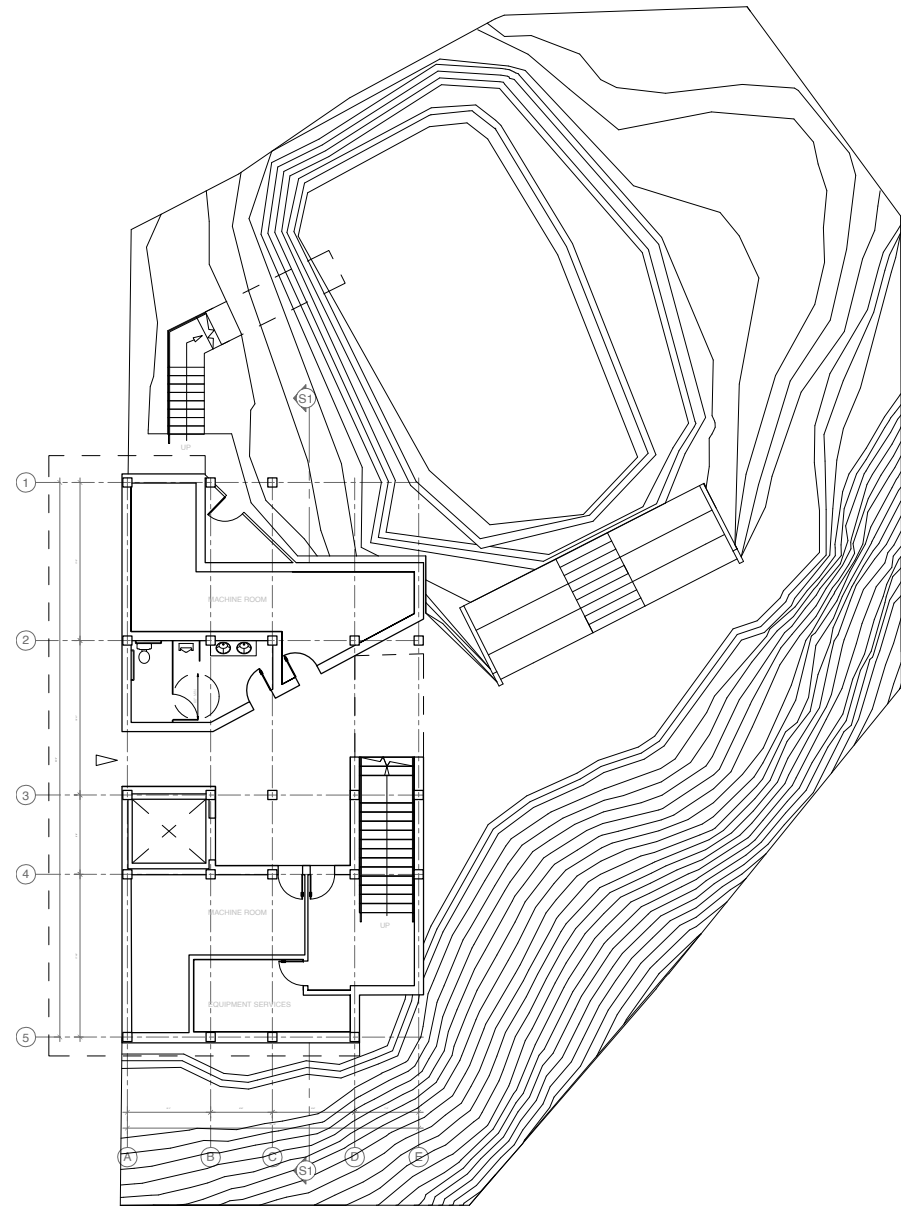
4



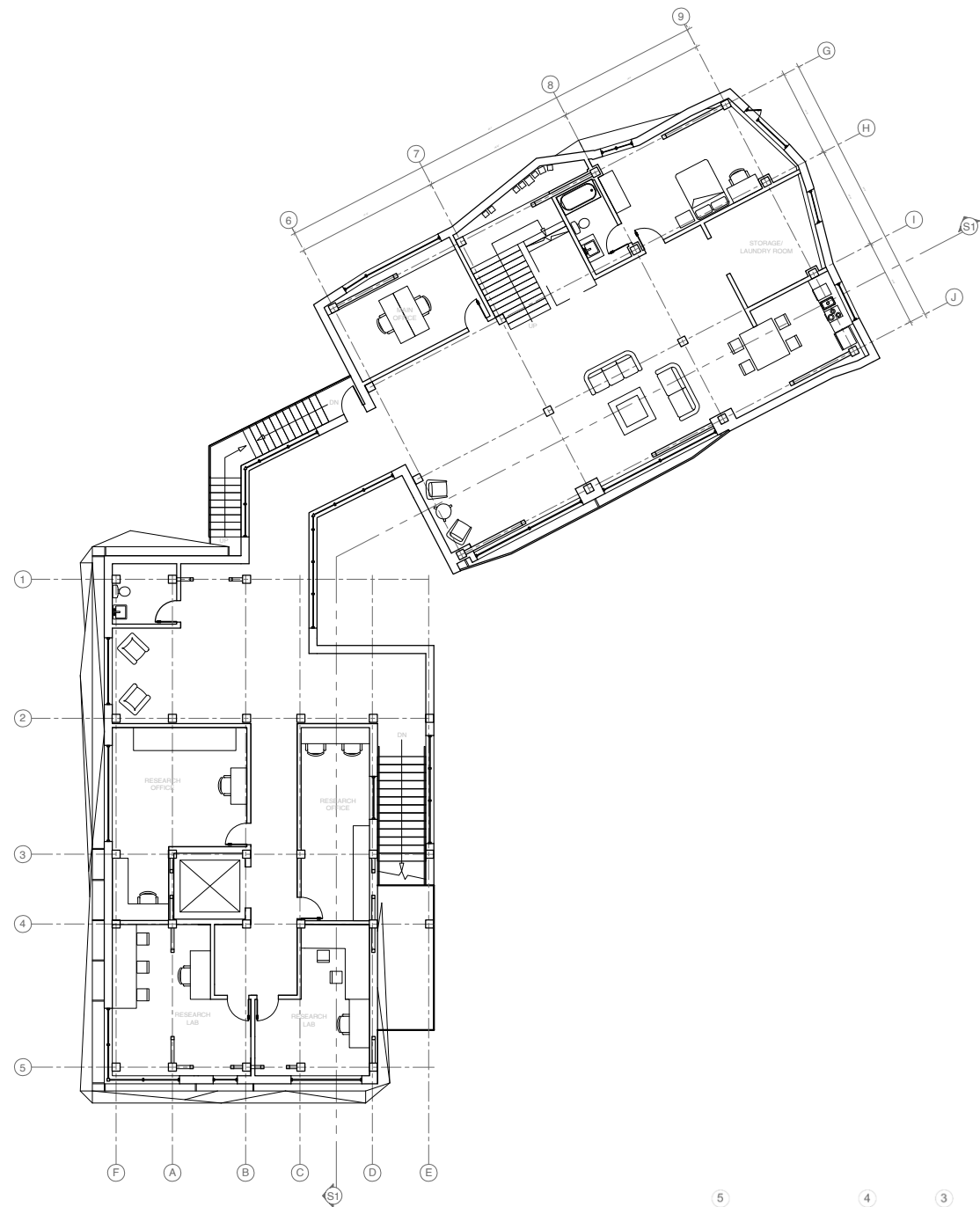
CUT OPENINGS



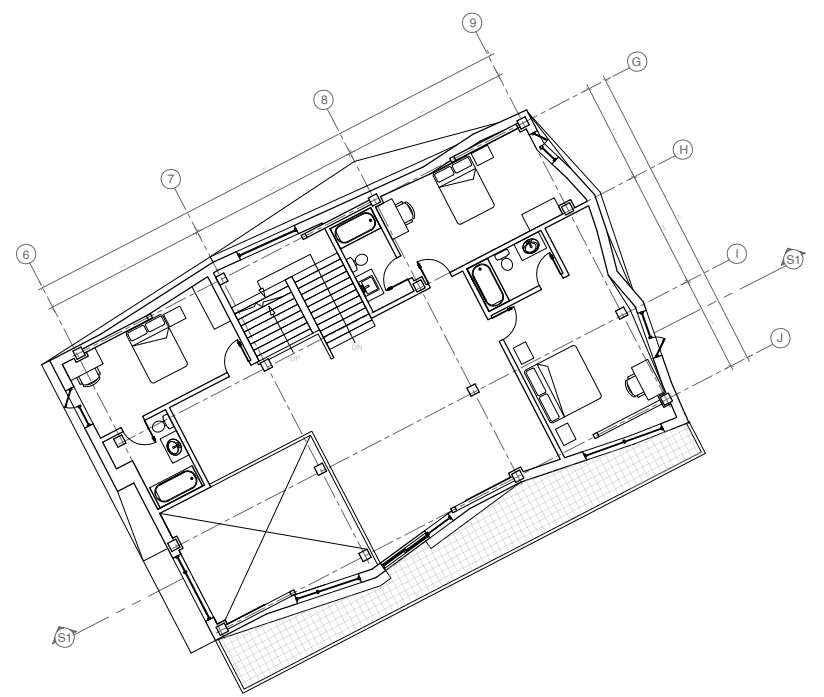




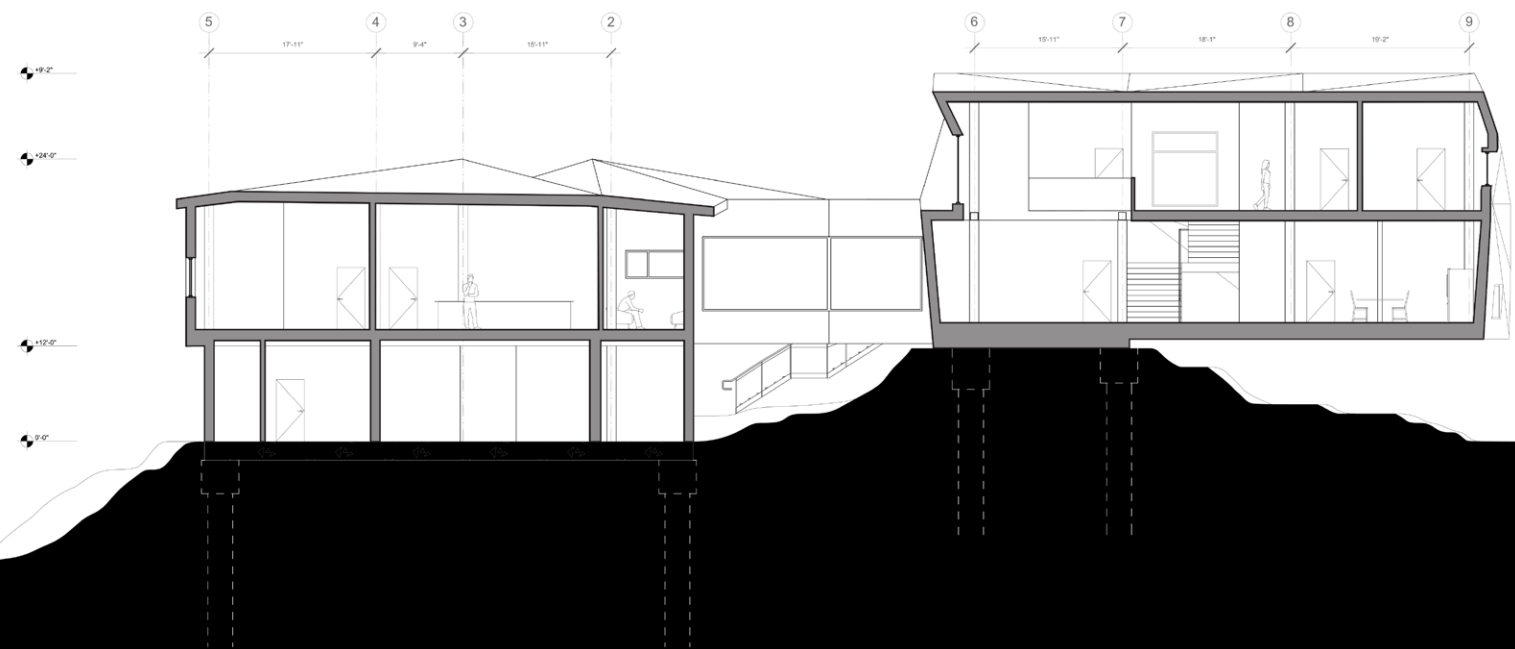
First Floor

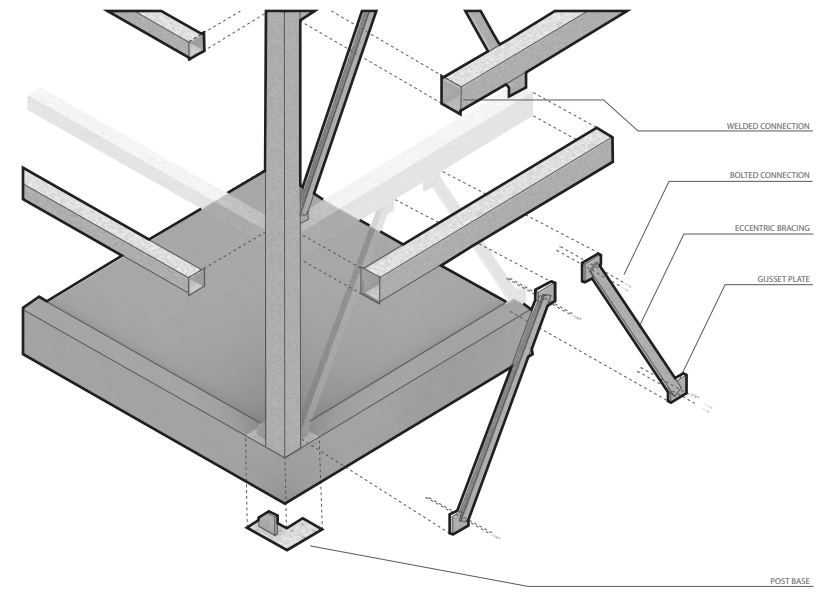
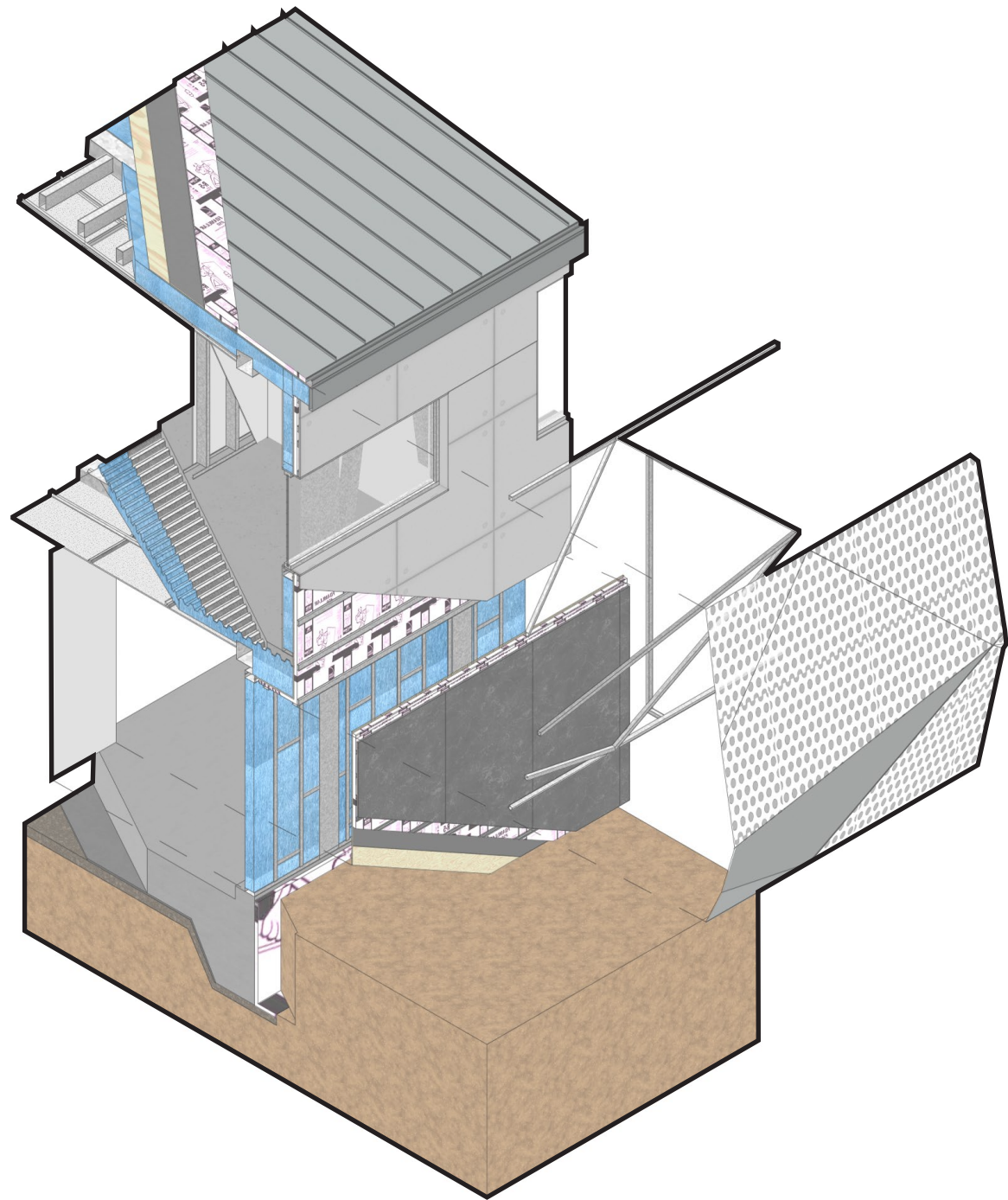


Second Floor

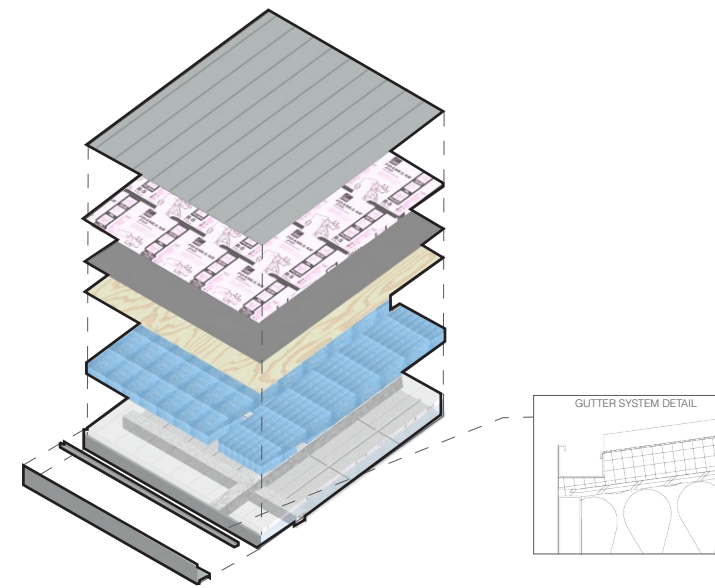


Third Floor

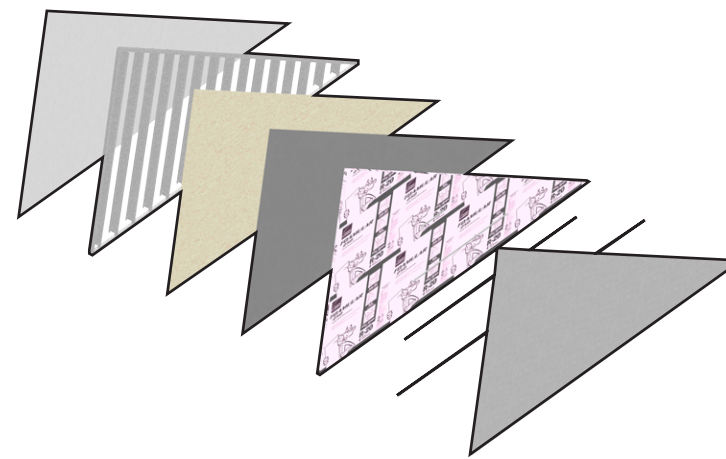




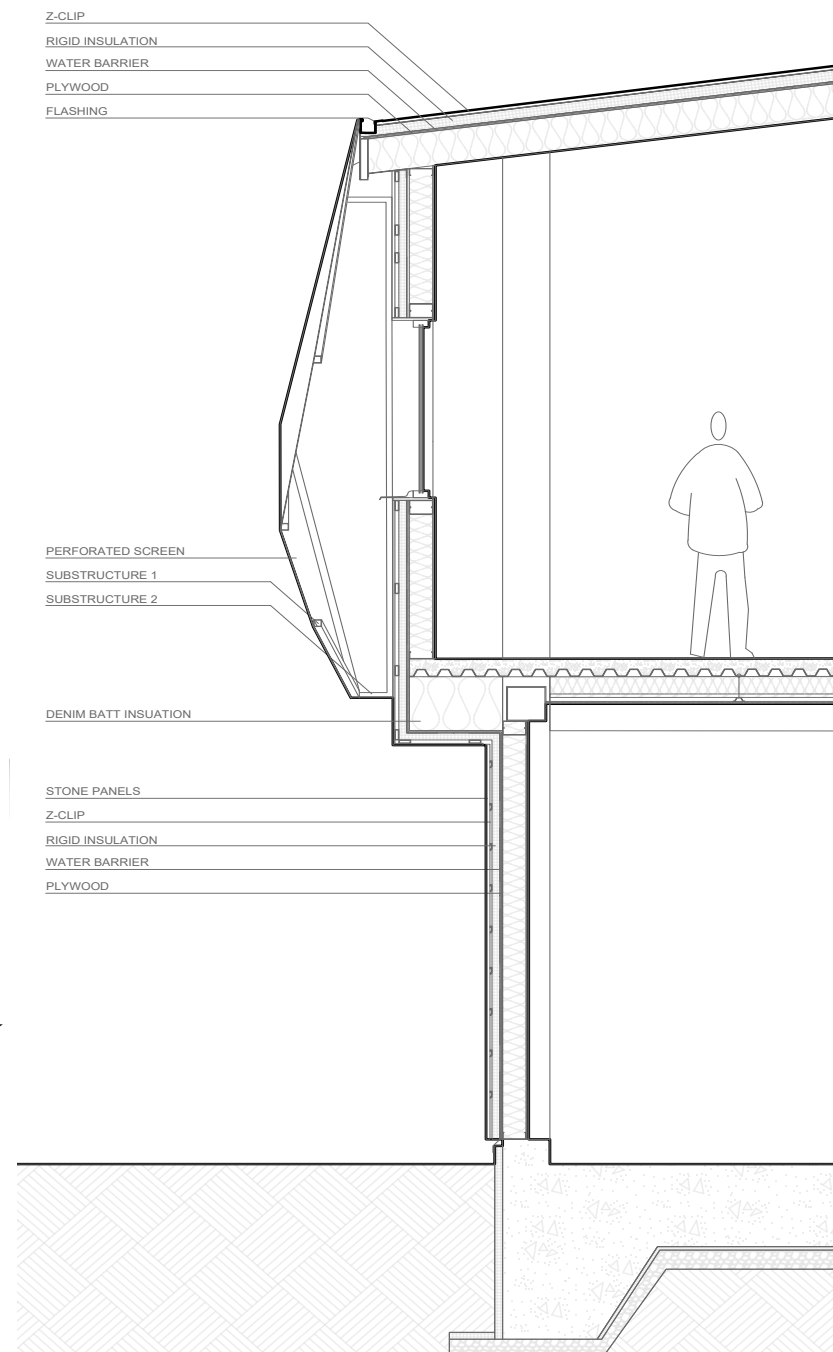
STRUCTURE



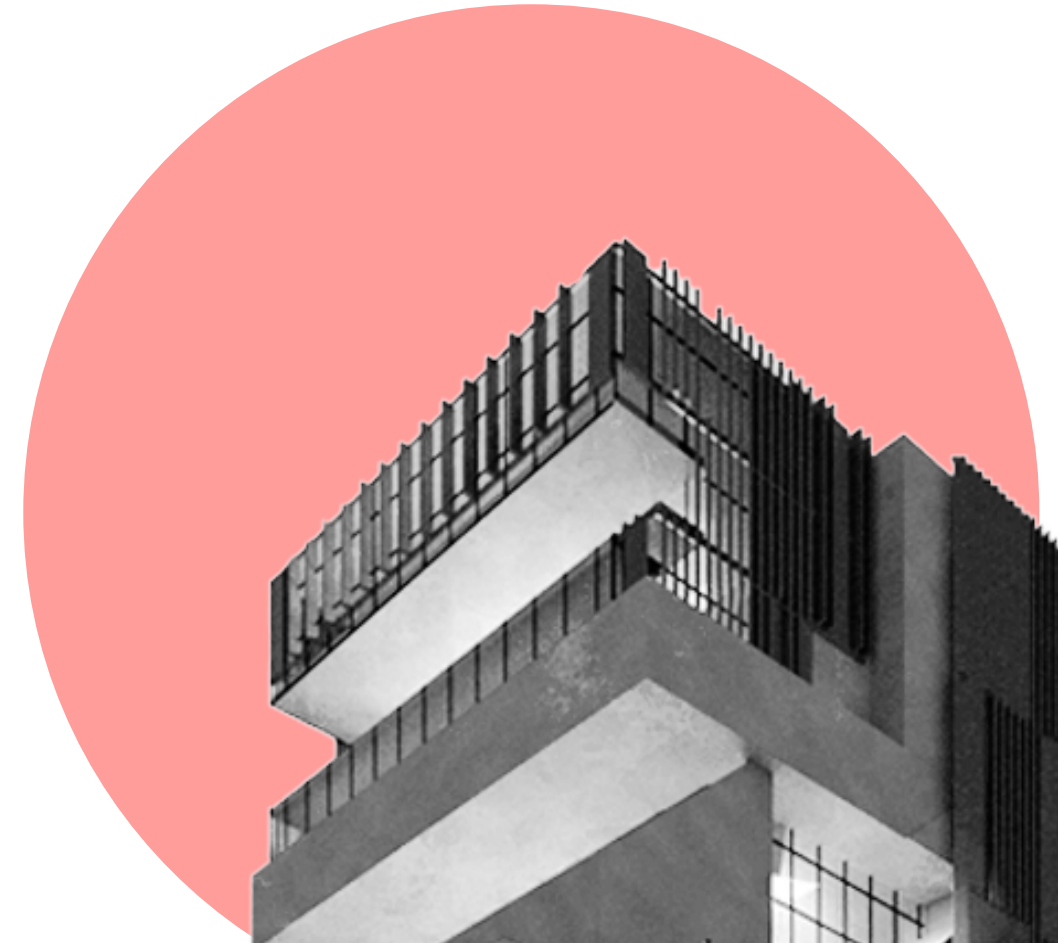
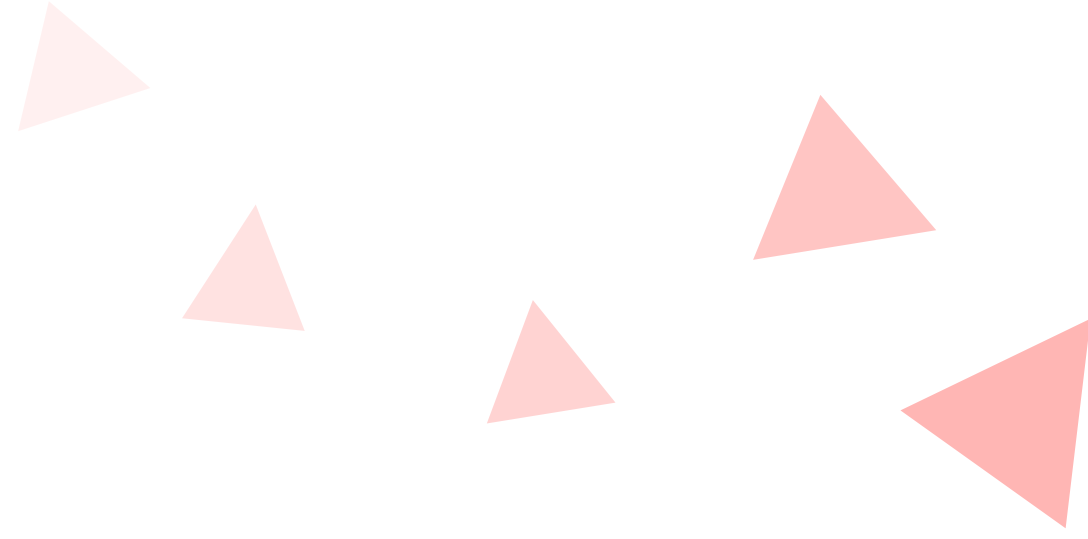
ROOF ASSEMBLY



WALL ASSEMBLY



04



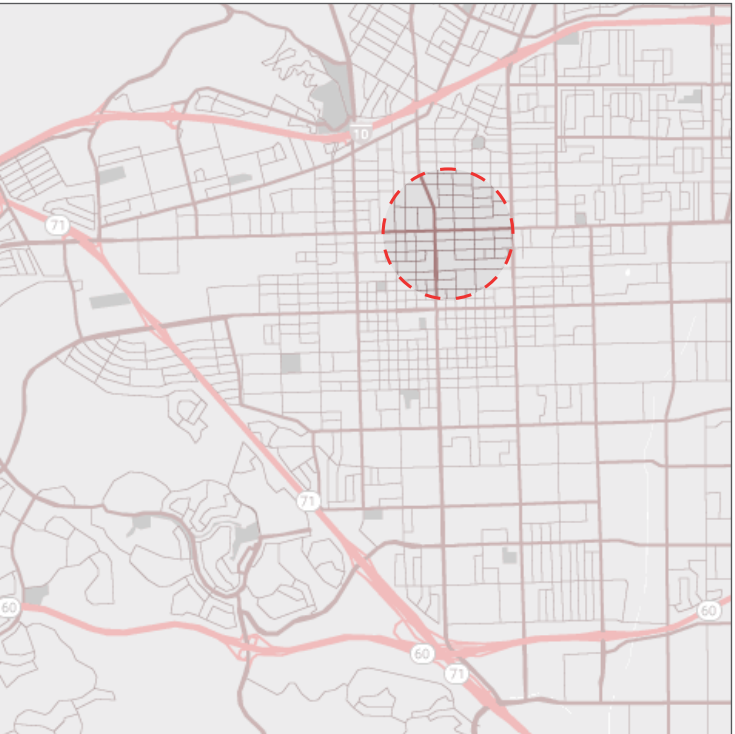
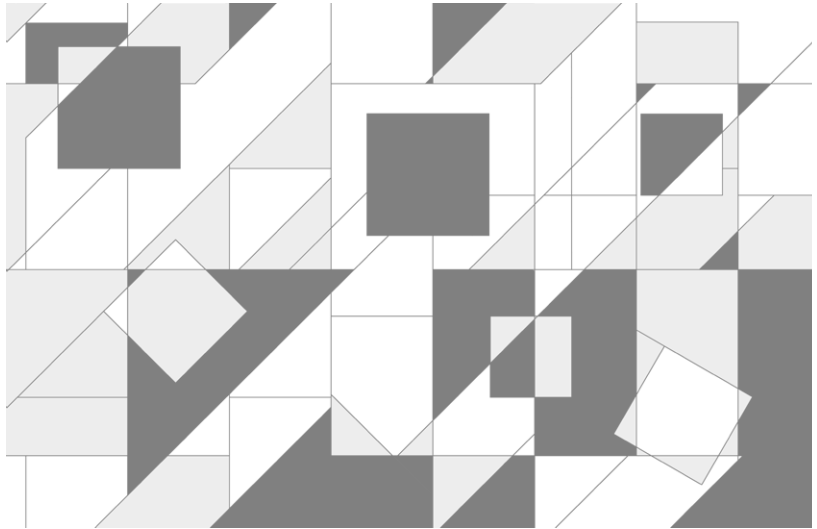
# The New School of Architecture

Spring 2024  
Educational Facility  
Massing and Facade Study

This educational facility for Cal Poly Pomona's architecture program is conceived as both a pedagogical tool and an environmental response. Its massing is derived from a field study in which the intensity and duration of shade cast by various objects informed the height of their architectural extrusions. The result is a sculptural form that encodes the logic of solar behavior into the building's volume, turning spatial mass into a physical record of time and light.

Vertically stacked and offset volumes create generous overhangs and varied terraces, while the building's facade integrates angled vertical louvers designed for optimal solar shading. These fins reduce heat gain, enhance interior comfort, and limit glare, enabling daylighting without compromising energy efficiency.

The structure's deliberate asymmetry and stepped composition also promote cross-ventilation and passive cooling strategies. A large open plinth activates the ground level, encouraging gathering and movement through the site.



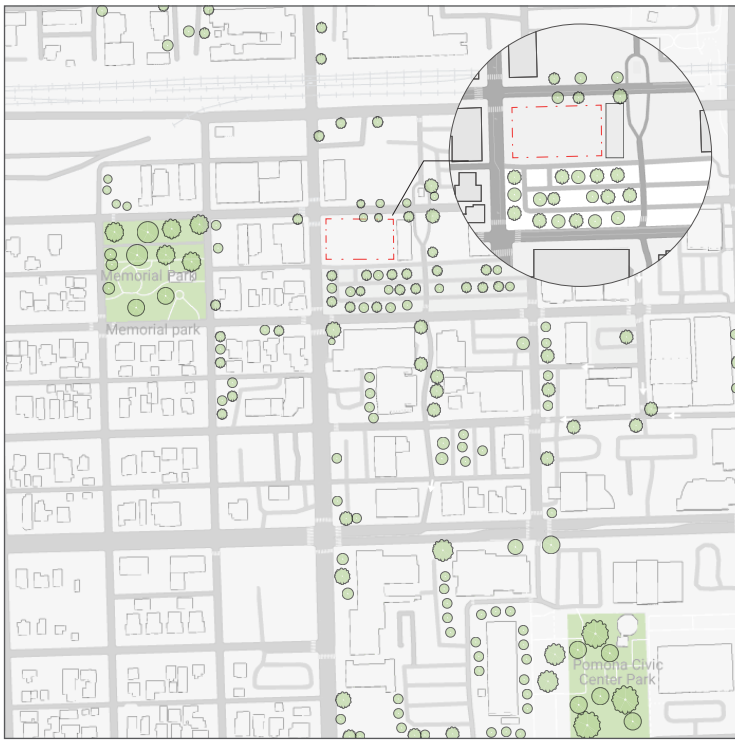
MACRO SITE MAP



ACCESS TO SITE + SOUND POLLUTION

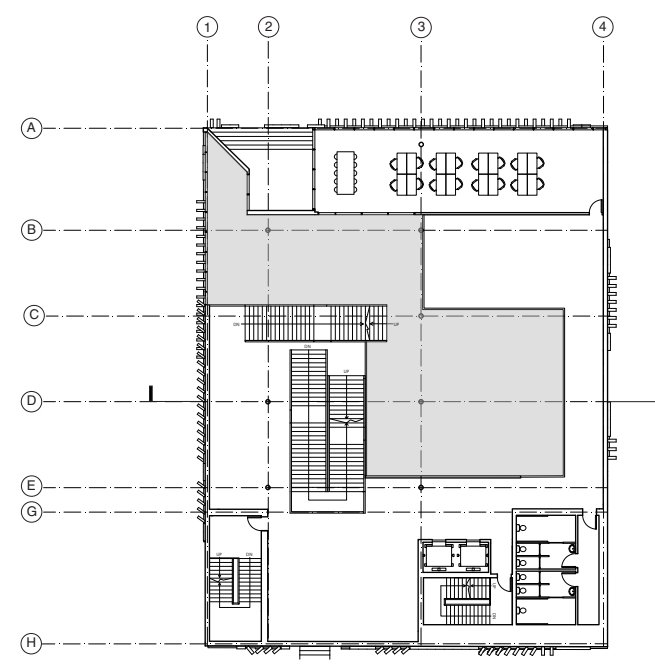
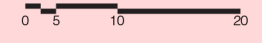
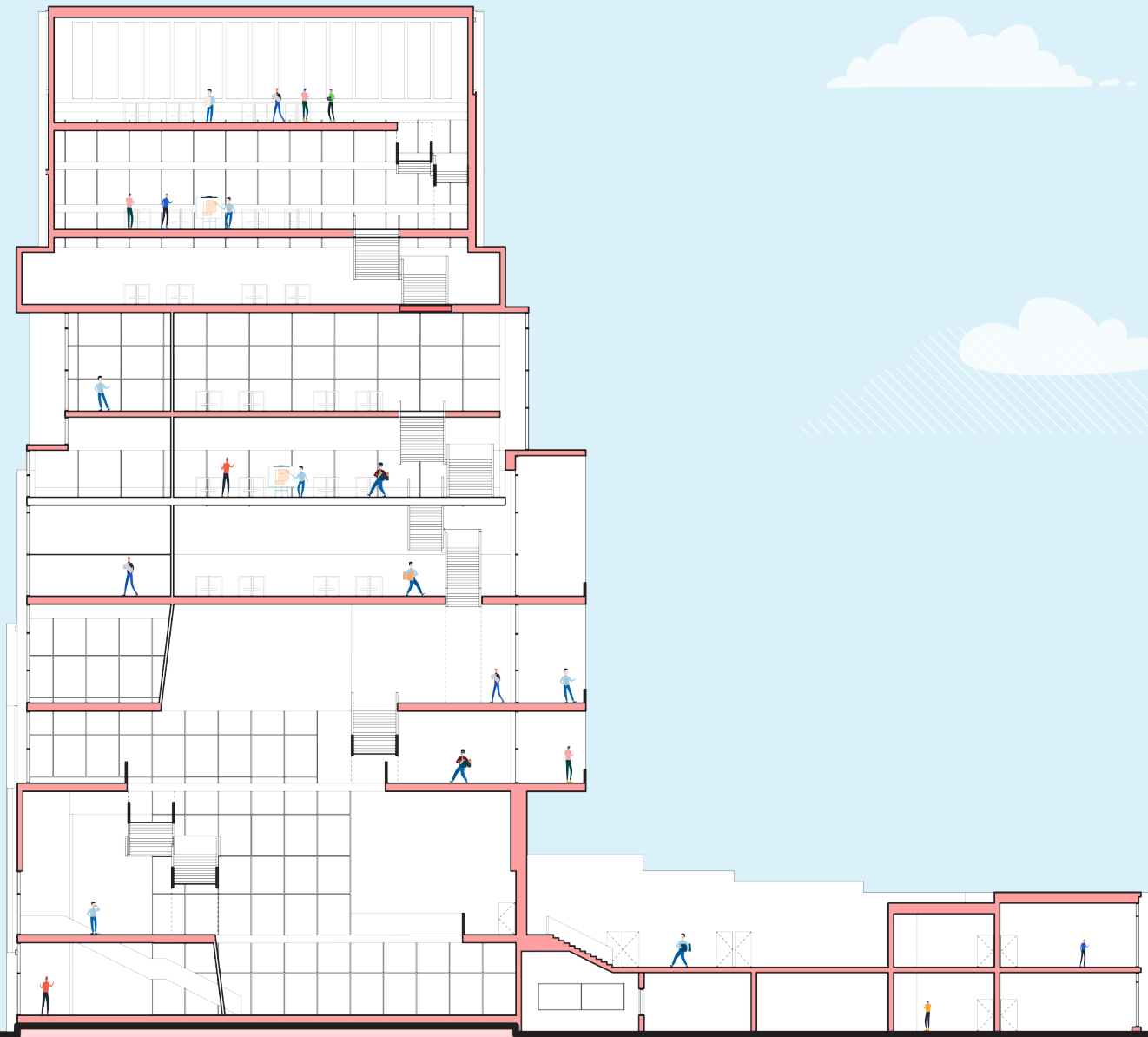


SUN + WIND

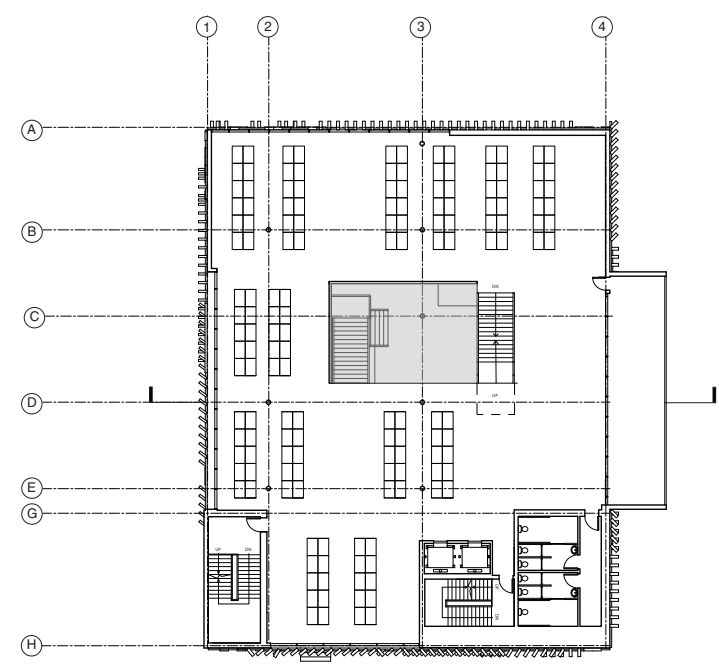


VEGETATION + PARKS

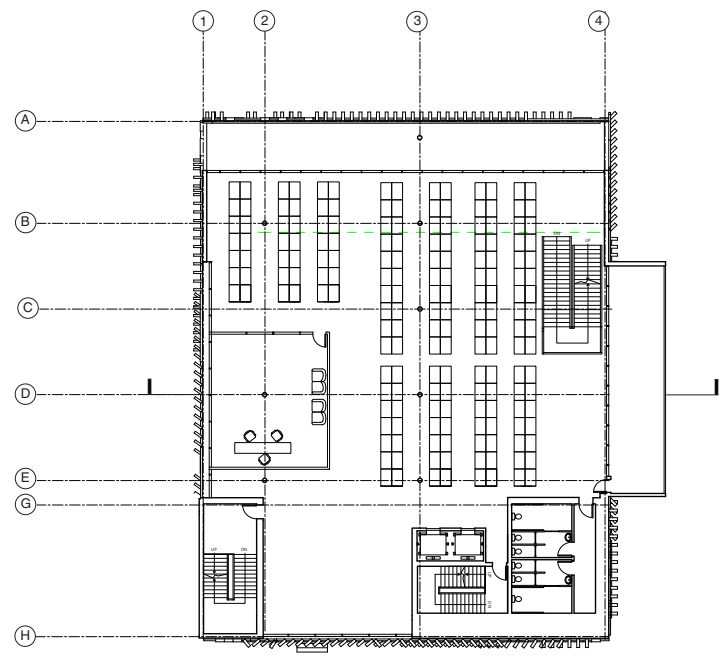
- ROOF  
+18'-6"
- LEVEL 11  
+18'-6"
- LEVEL 10  
+13'-6"
- LEVEL 9  
+18'-6"
- LEVEL 8  
+15'-0"
- LEVEL 6  
+17'-0"
- LEVEL 5  
+18'-6"
- LEVEL 4  
+13'-6"
- LEVEL 3  
+27'-0"
- LEVEL 2  
+13'-6"
- LEVEL 1  
+3'-0"



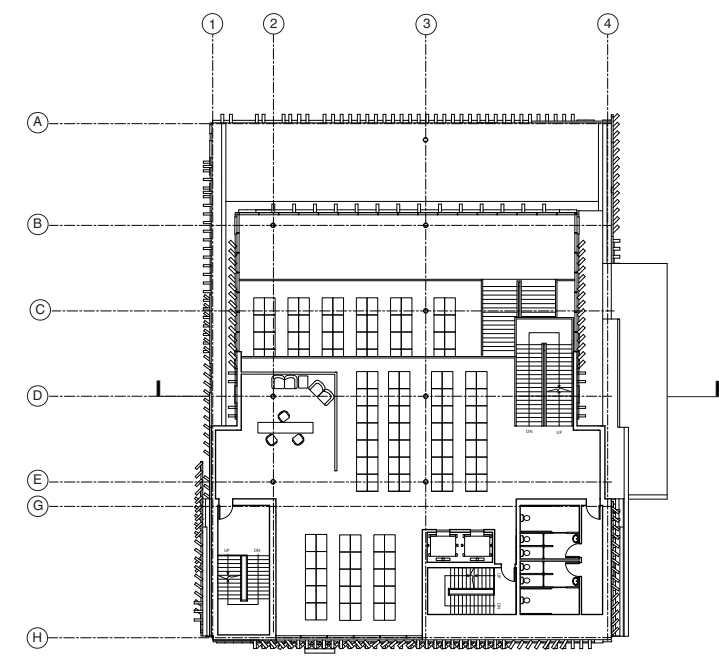
2ND FLOOR PLAN



3RD FLOOR PLAN

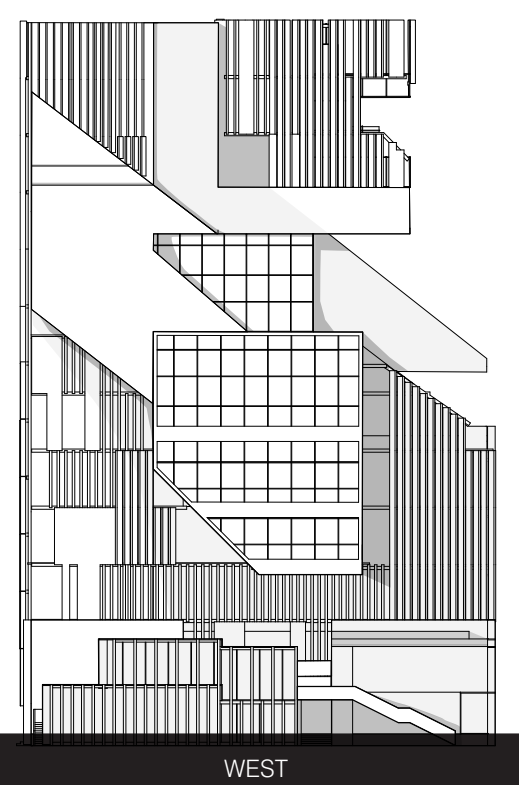
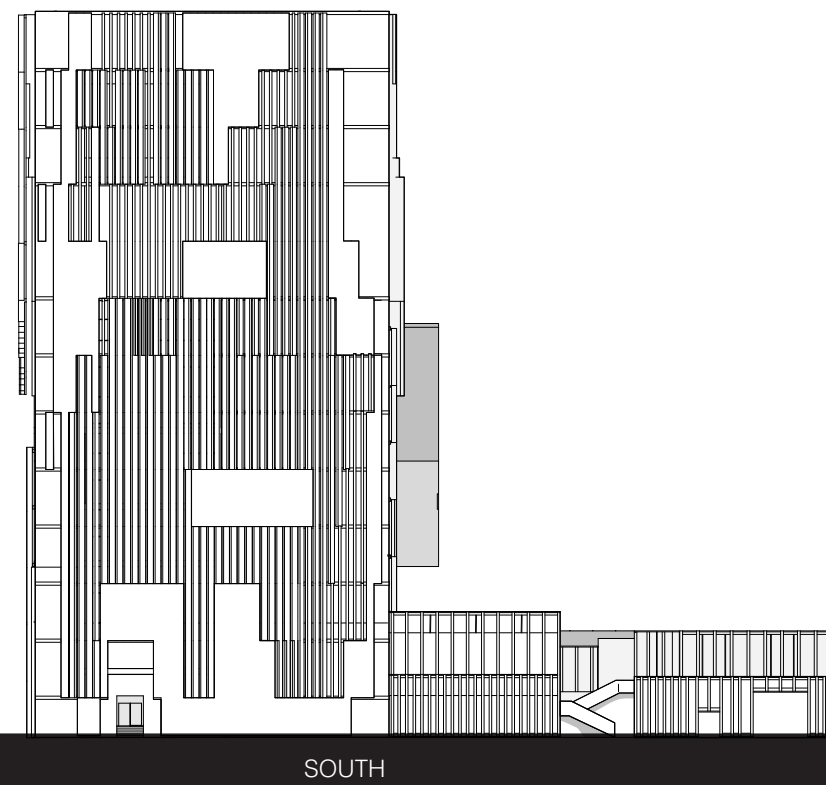
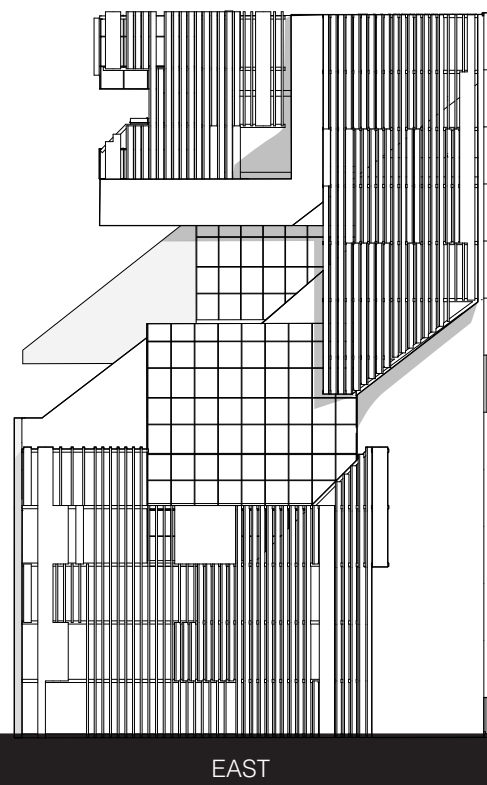
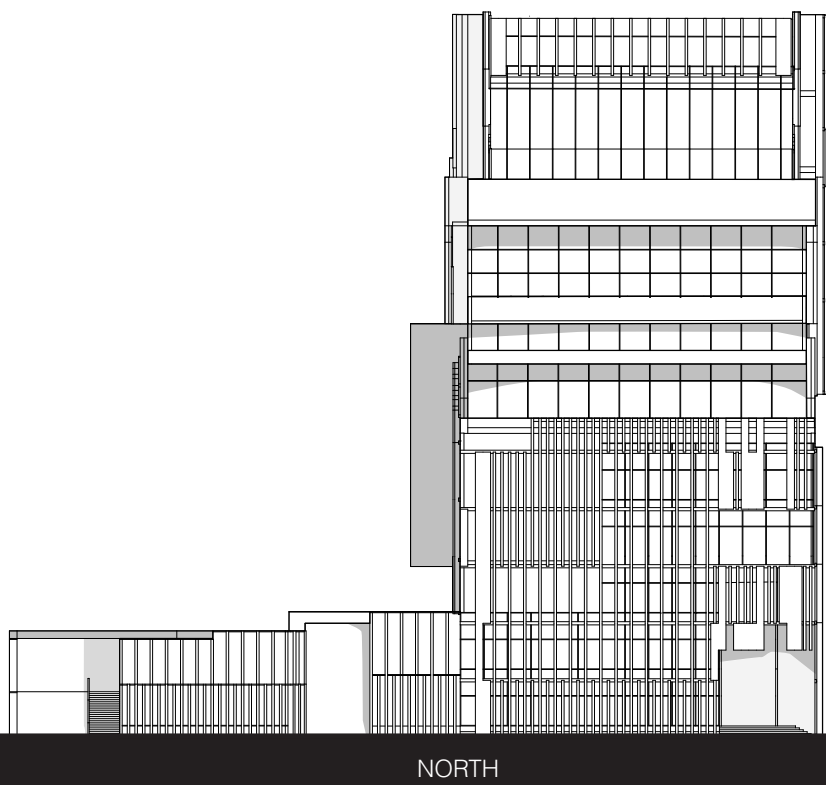
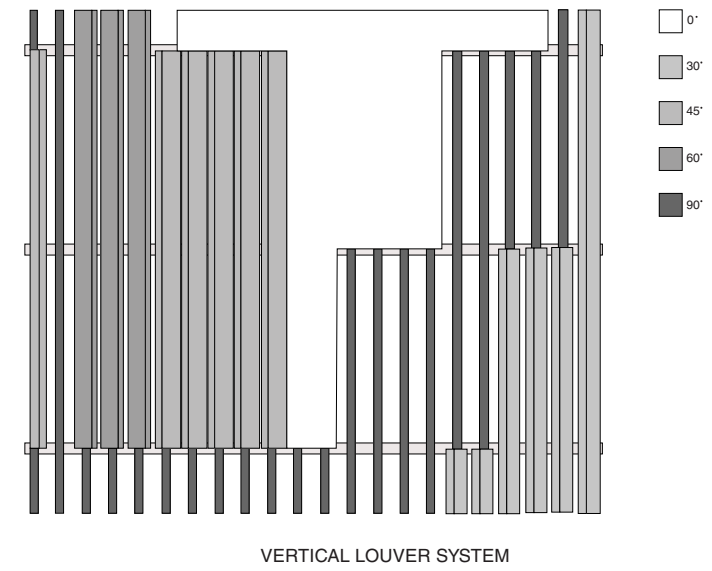
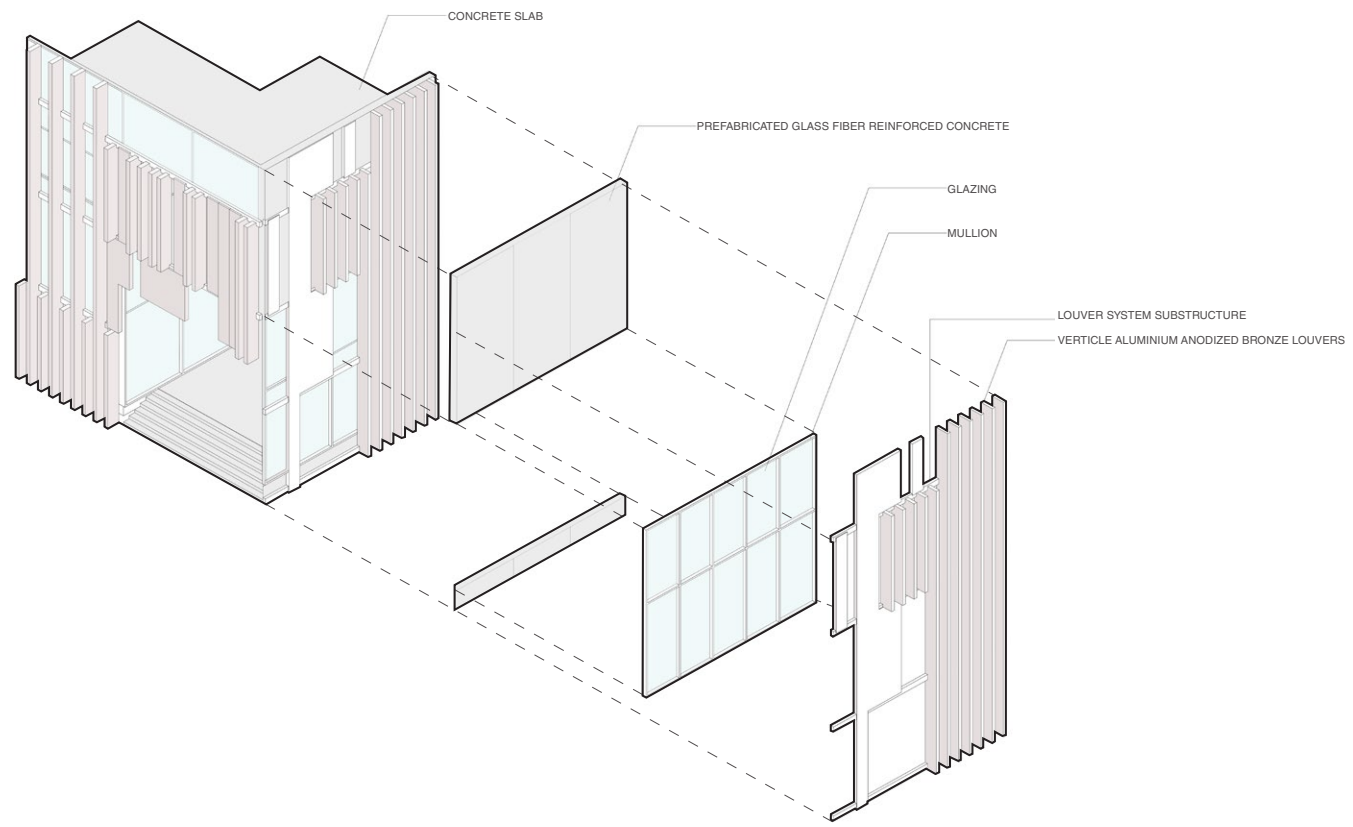


4TH FLOOR PLAN



7TH FLOOR PLAN





05

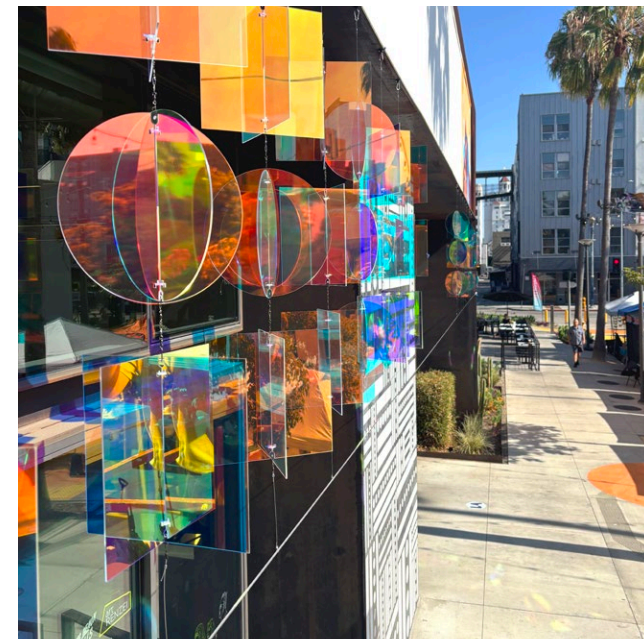


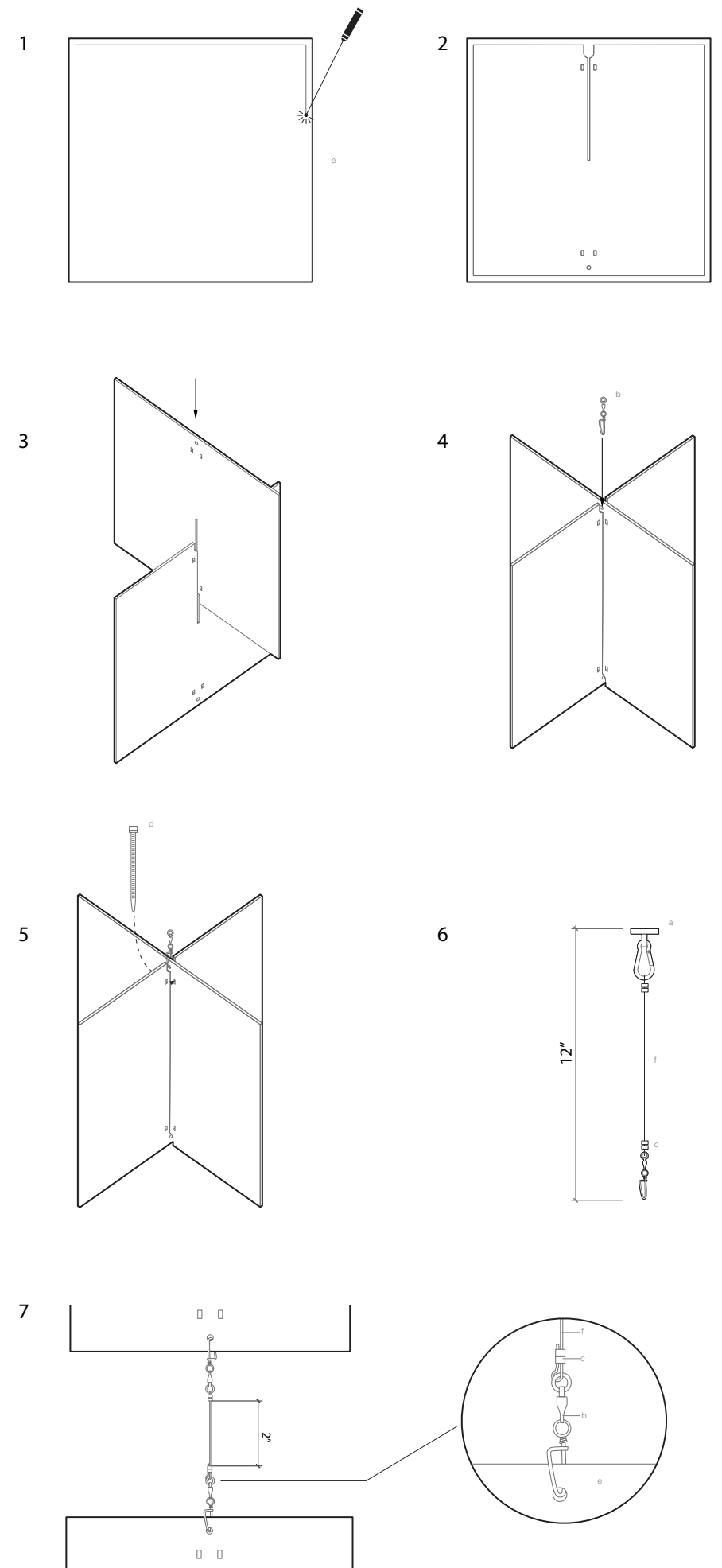
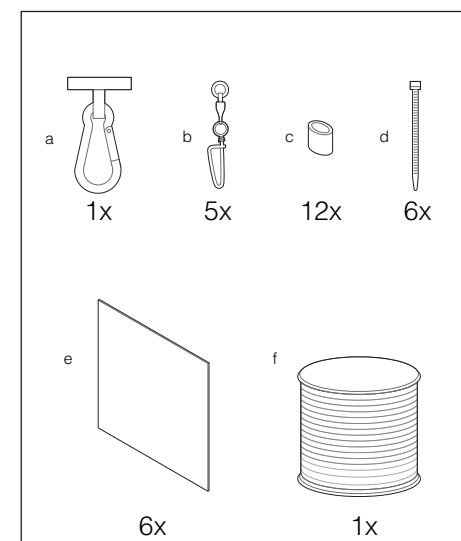
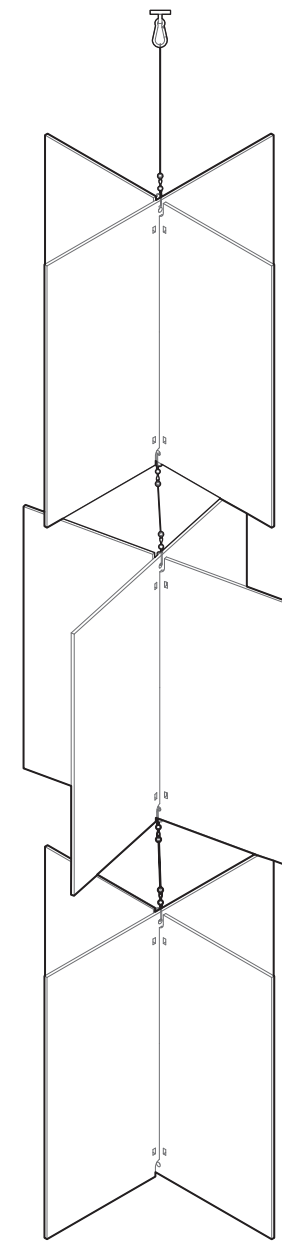
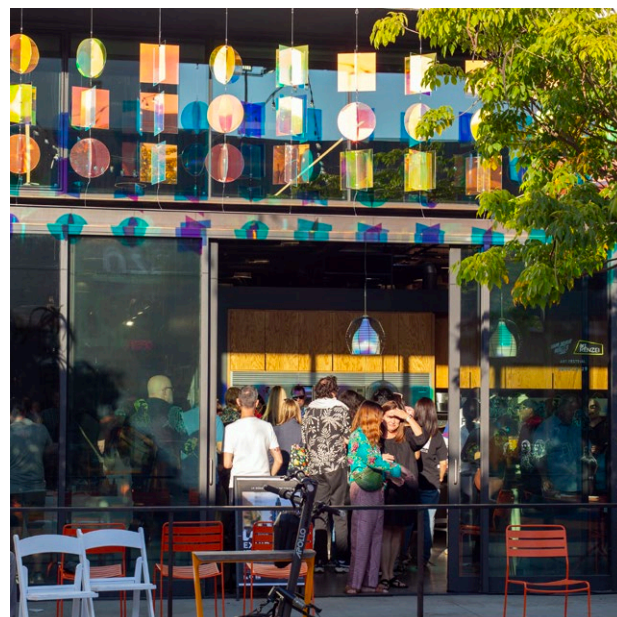
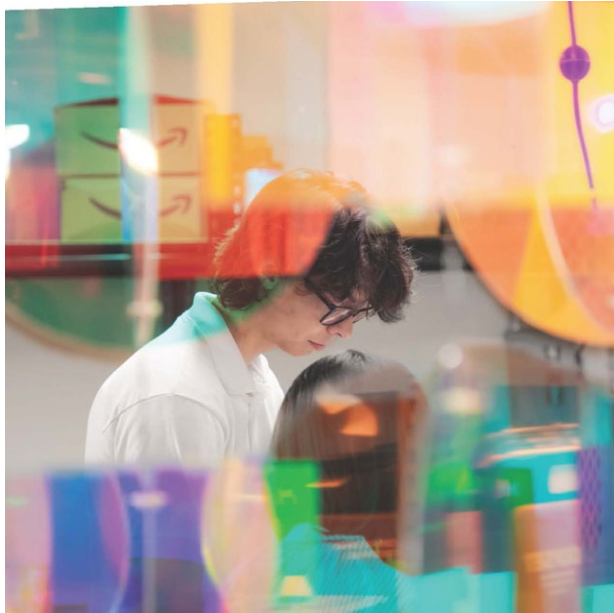
# The Rainbow Machine

Summer 2025

Downtown Long Beach Design Festival

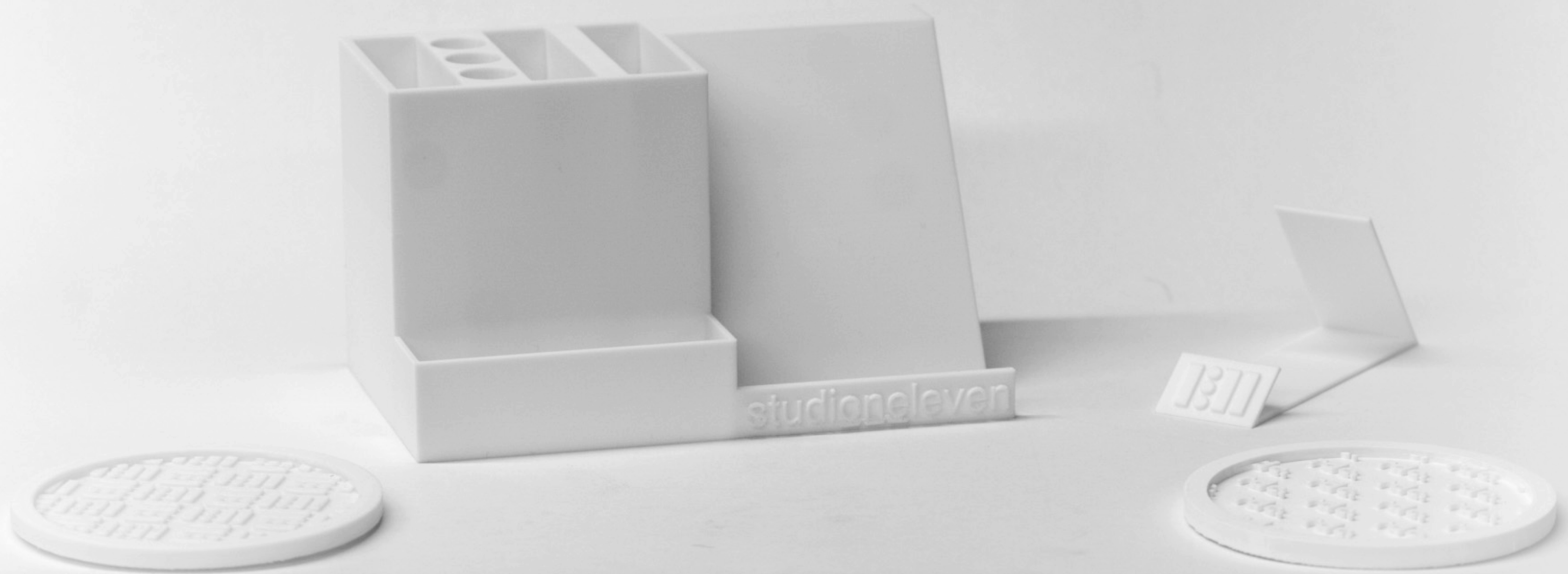
The Rainbow Machine is an art installation at RDC-Studio 111 that aims at activating the Promenade located on 3rd St. in downtown Long Beach. Its dynamic construction allows it to move freely with the wind and as it reaches the afternoon it creates varying shadows across the promenade with a disco ball lighting effect. Its gentle motion and shifting of lights makes an interesting attraction and additon to the downtown area. This installation was a collaboration with other creative minds Nathan Amondson, William Ellsworth, and Artem Panchenko.

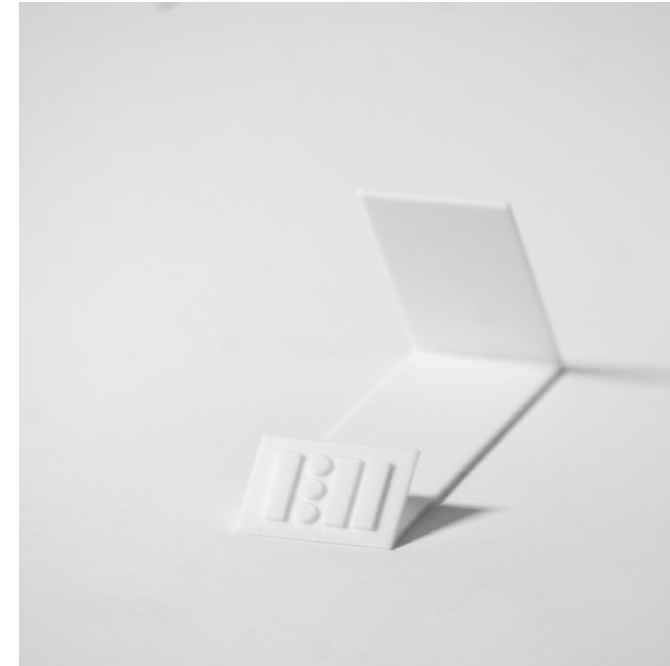
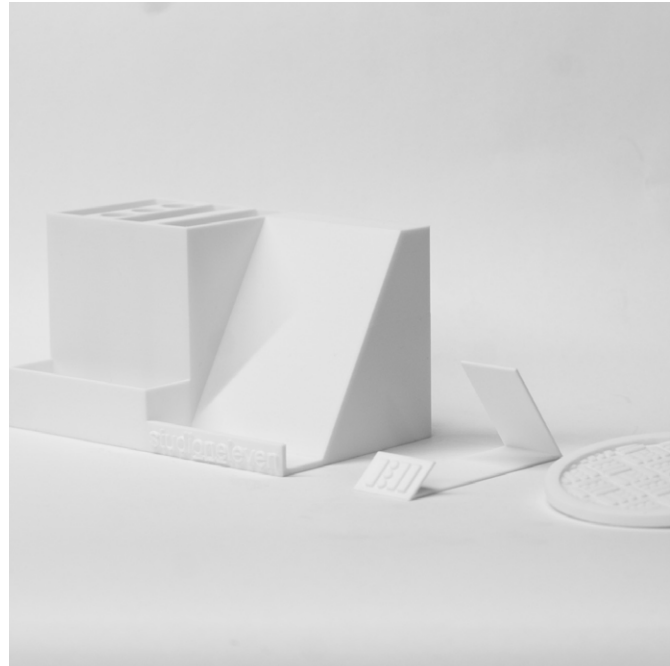


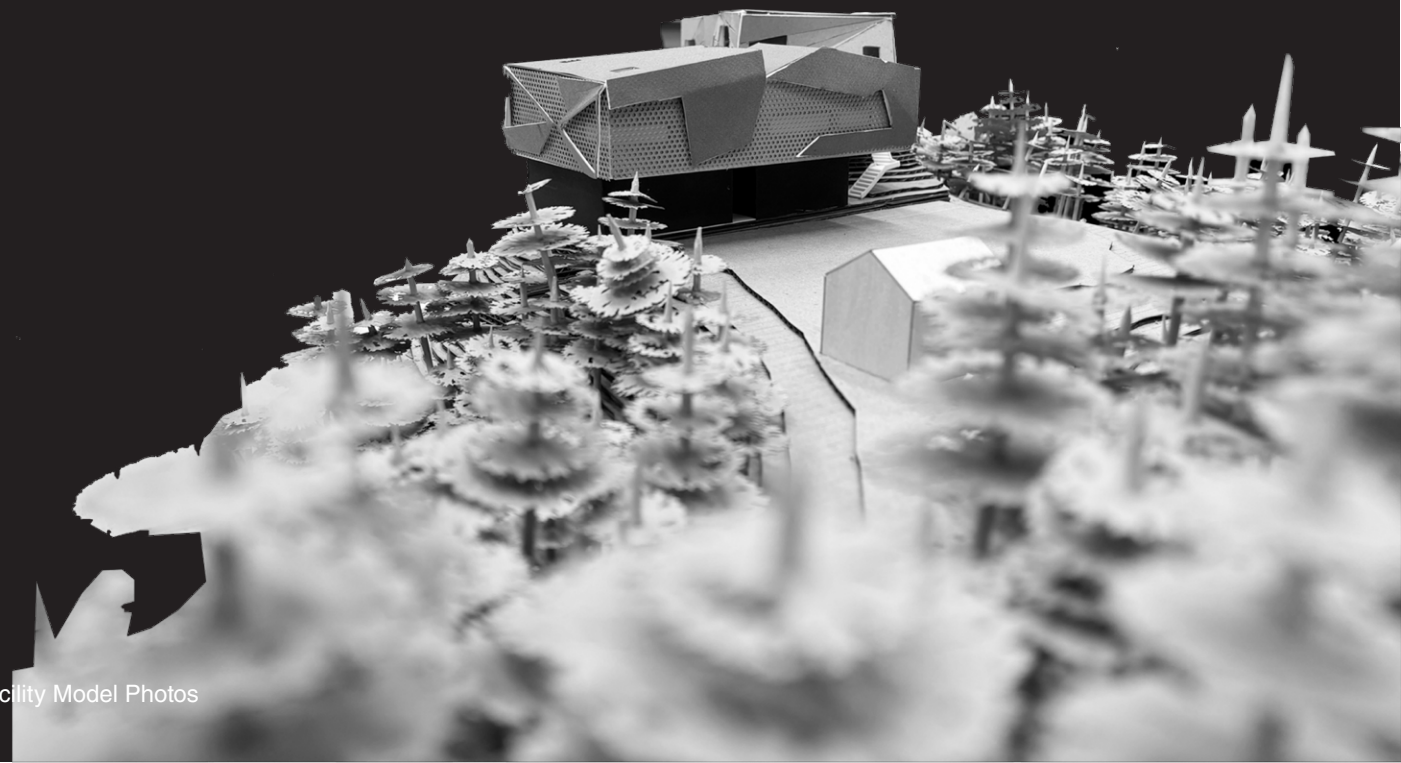
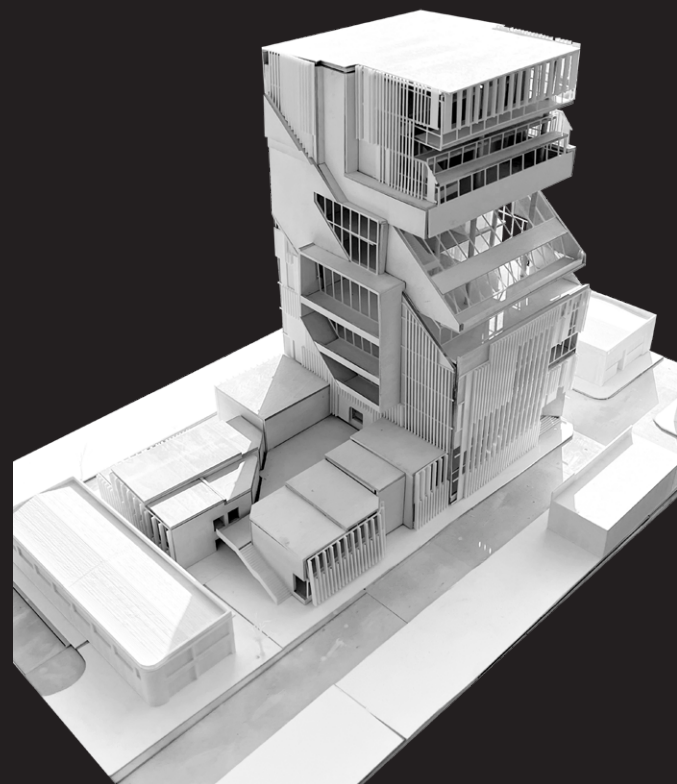
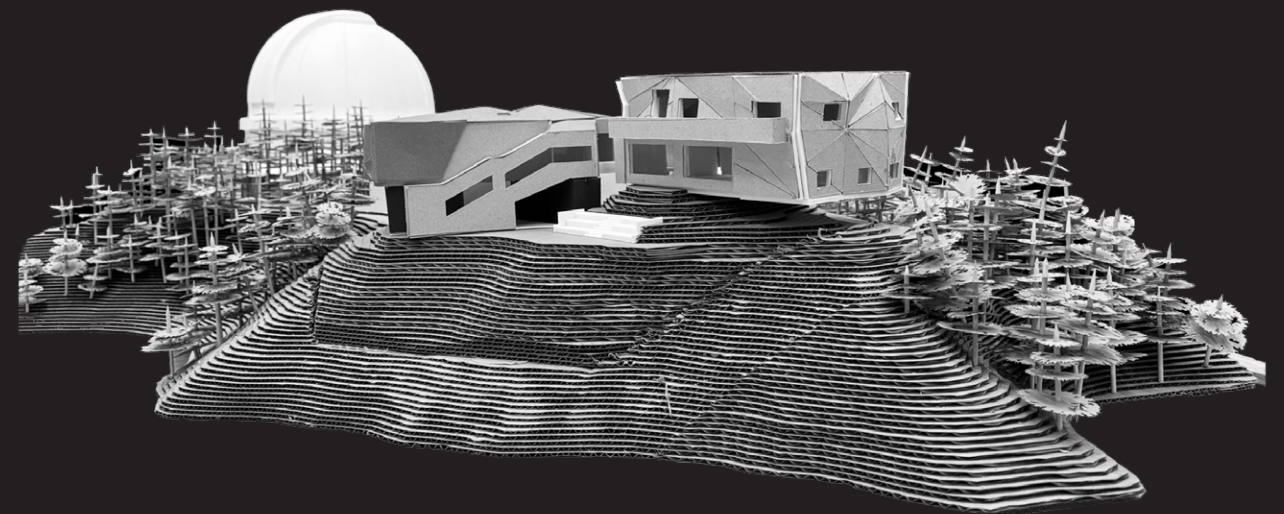
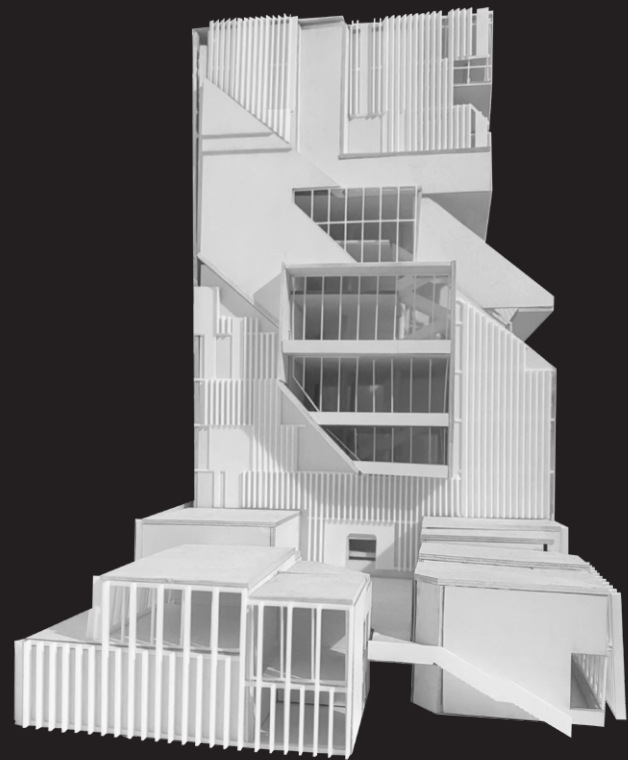




## Digital Fabrication & Model Making









Spencer Salcedo  
spencersalcedo13@gmail.com