



ARCHITECTURE
PORTFOLIO

Mohammed Alsway 2016-2021

" The responsibility of an architect is to create a sense of order, a sense of place , a sense of relationship."

- Richard Meier

MOHAMMAD ALSWAY

Architect

An ambitious young architect willing to learn any new knowledge with a tremendous amount of emerging capabilities who is able to meet all requirements in the best way.

Skills

Softwares :

Modeling	Autodesk Autocad.....	●●●●●●●●
	Autodesk Revit.....	●●●●●●●●
	Autodesk 3D's Max.....	●●●●●●●●
Rendering	V-ray / 3D's Max.....	●●●●●●●●
	Lumion.....	●●●●●●●●
	Twinmotion.....	●●●●●●●●
Graphics	Adobe Photoshop.....	●●●●●●●●
	Microsoft Office.....	●●●●●●●●

Languages :

Arabic.....	●●●●●●●●
English.....	●●●●●●●●

Personal Skills:

Fast Learner
Good Communication Skills
Works Well Under Pressure
Problem Solving

Experience

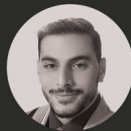
Designer Architect at Bitar Consultants
September.2021 - January.2023

Summer Internship at Rum Atelier
July.2021 - September.2021


Administrator at The Academic Team Catch 22
2018 - 2019


Khotwa Conference: Logistic Administrator
September.2018


To be an Architect Workshop
August. 2018




INFO

 Mohammad Alsway

 07.18.1998

 Roseville, Minnesota

 +1612-597-8554

 mohammedsow1426@gmail.com

Education

High School:
Rusafa Secondary School
2015-2016

Bachelor's Degree:
University of Jordan
2016-2021

English Proficiency Certificate:
Century College
2023-2025

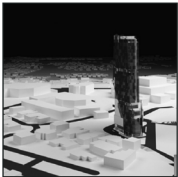
Interests

Volunteering
Group working
CG Works

Content :



1. Hijaz Railway
Graduation Project.



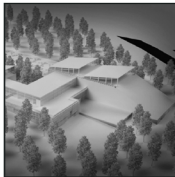
2. Bomonti Tower
Design 5 Project.



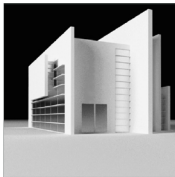
3. Switzerland Embassy
Design 3 Project.



4. Squares Academy School
Design 4 Project.



5. JU Research Center
Design 6 Project.



6. Ricard Meier Memorial
Design 5 Project.



7. Andalus JU Dorm
Landscape Project.

Hijaz Railway

Amman Station

Graduation Project

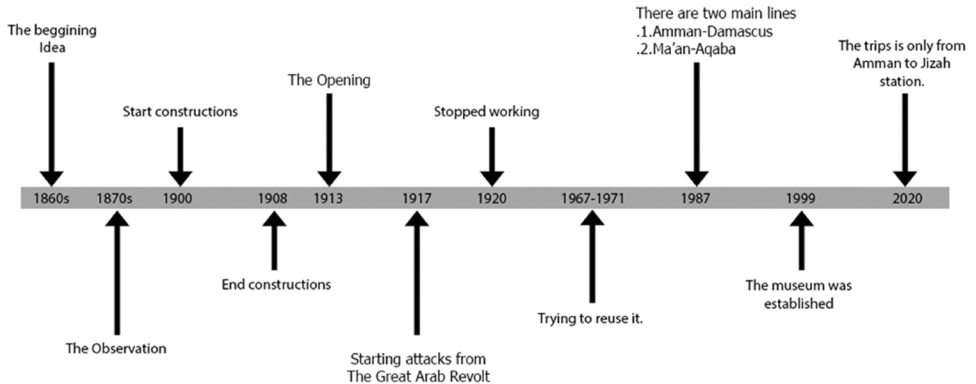
Supervised By: Dr. Tawfeeq Abu Ghaza



A Graduation project focus on the exist station and the relations with the transportation issue. And make all of it concern with the inner tourism.



Hijaz Railway Timeline



The Hijaz-Jordan railway is one of the oldest monuments associated with the modern history of Jordan, as this link goes back to the history of the Great Arab Revolt. And it's the longest part remaining that reach 451.5 Km.
 Now the trips only in two lines : 1. Amman to Jizah Station.
 2. Ma'an to Aqaba for phosphate.

Approach :
 Amman station located in the middle of Amman near to downtown and close to Raghadan transportation center and behind Marka airport. With an area 28572 sqm.



Concept

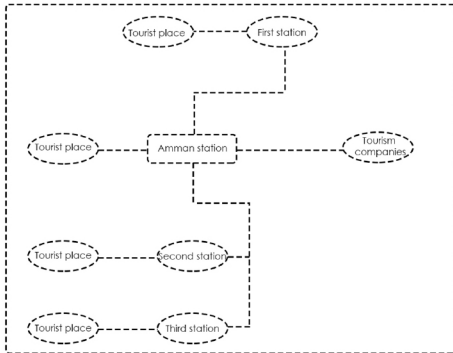
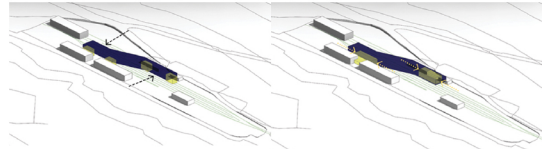
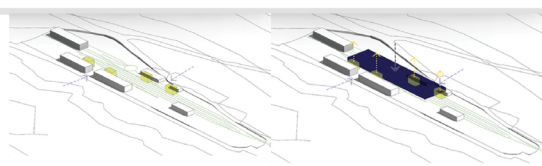
The concept was to put all the economical and cultural values in the whole vision then integrate them with the old station to make a new one that cooperate with all parameters to achieve all goals.

Goals

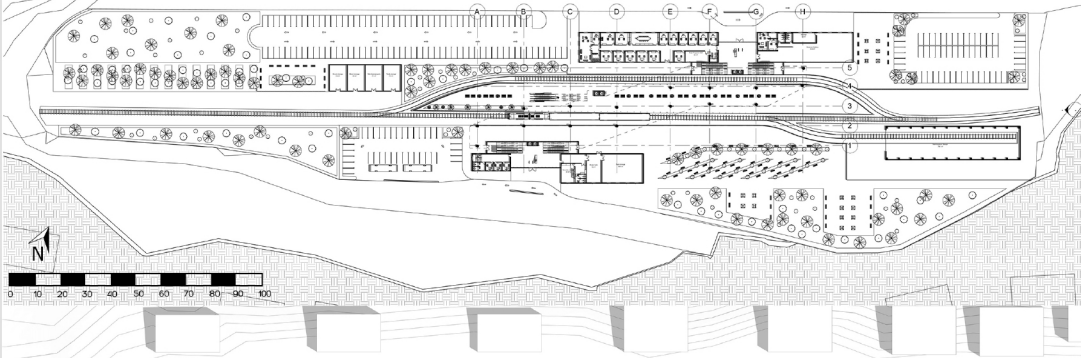
Increase the economical value of the Hijaz railway, Increase Awareness about inner tourism, Make the Hijaz railway a main line of transportation, Affording jobs opportunities, Activating tourist areas

Objectives

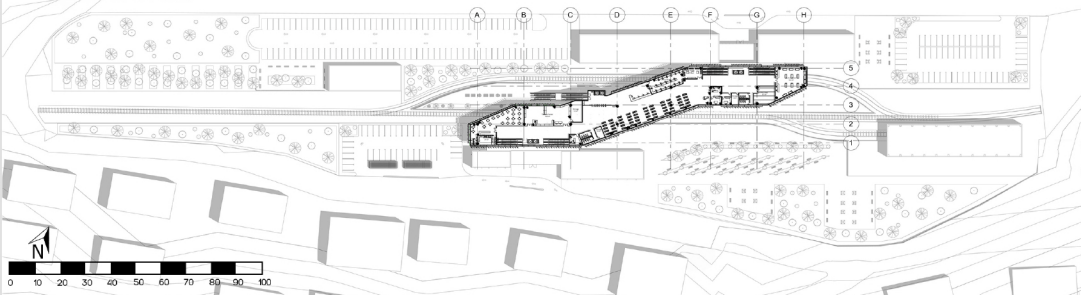
Provide tourism center to make a full knowledge background. Provide more activities to utilize waiting time. Focus on the circulation and accessibility. Redesign the platform to control the process of trips.

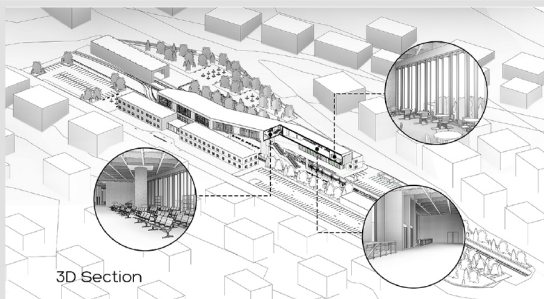


Master Plan

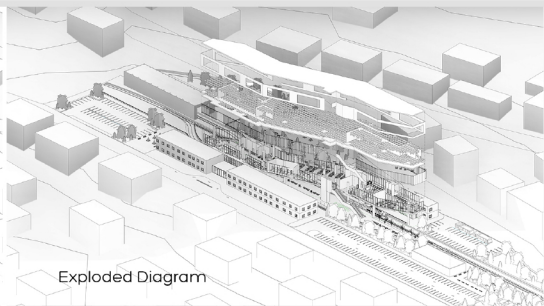


Level 2 Plan

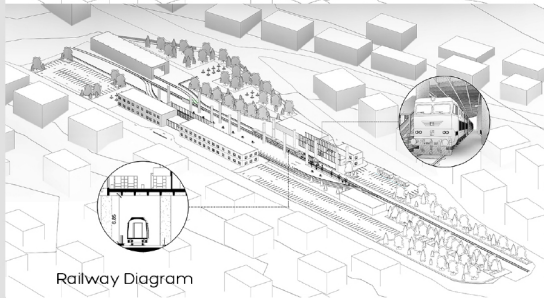




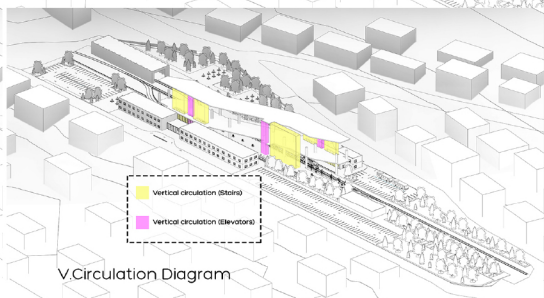
3D Section



Exploded Diagram



Railway Diagram



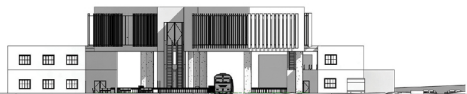
V.Circulation Diagram



Section 1



North Elevation



West Elevation



South Elevation



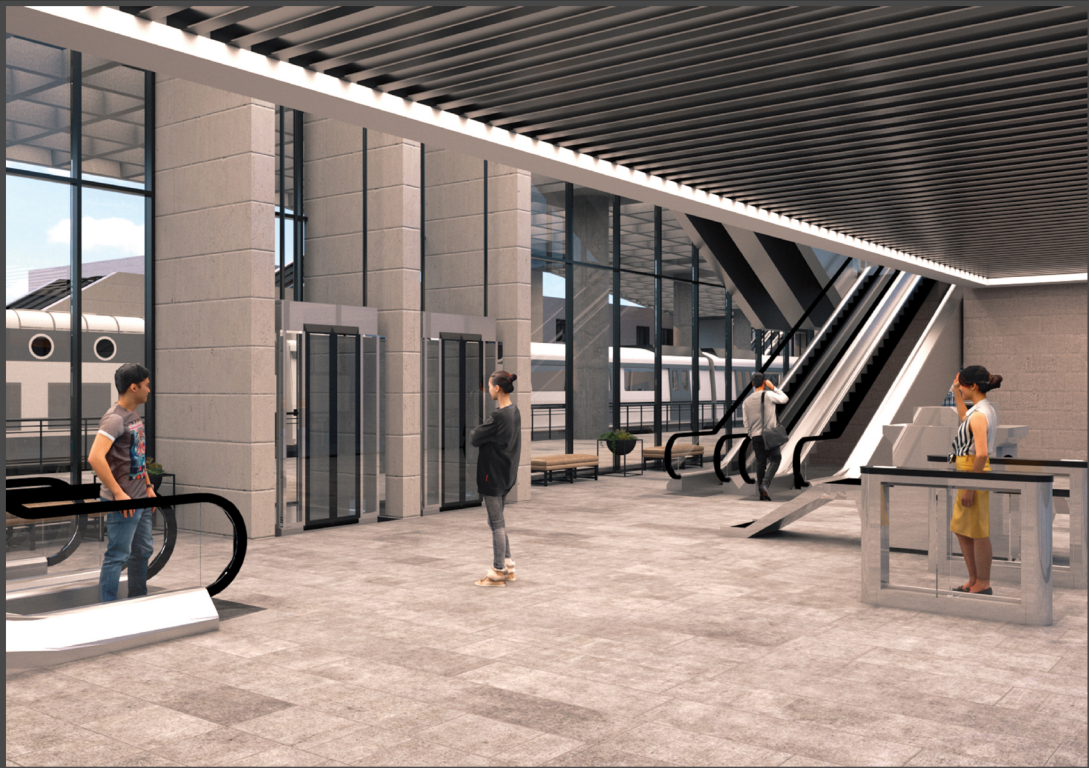
Section 2



Sective









Hijaz Railway
Amman Station

قاعة الانتظار

المتنزه

Amman Station

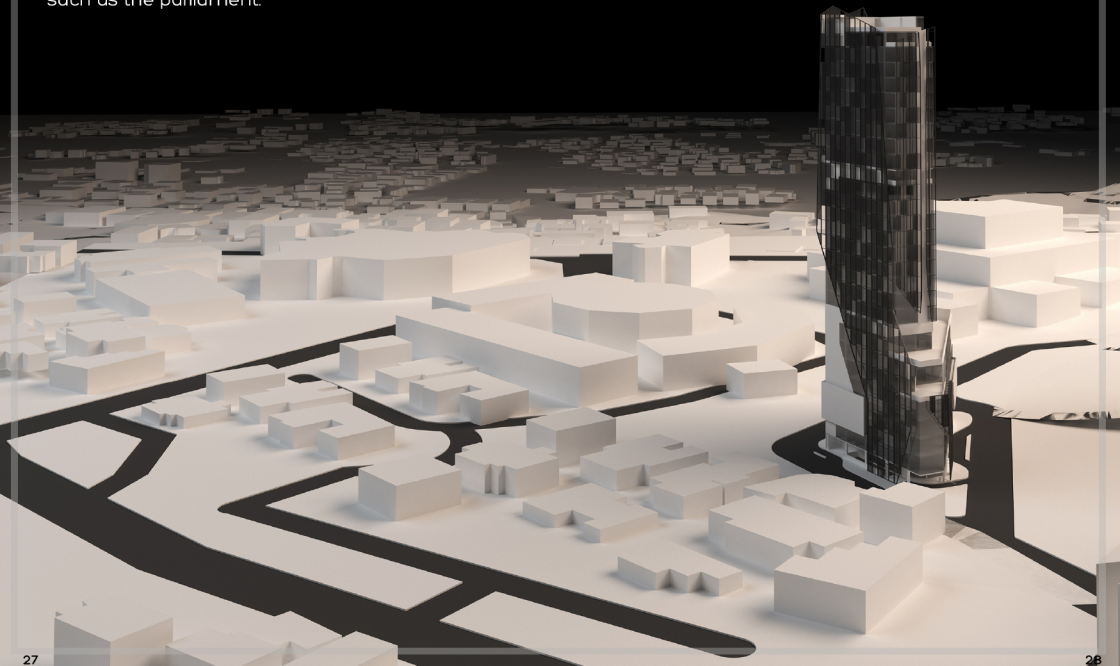
Bomonti Tower

Design 5 Project
Suoverised by Arch.Fadia Nassar

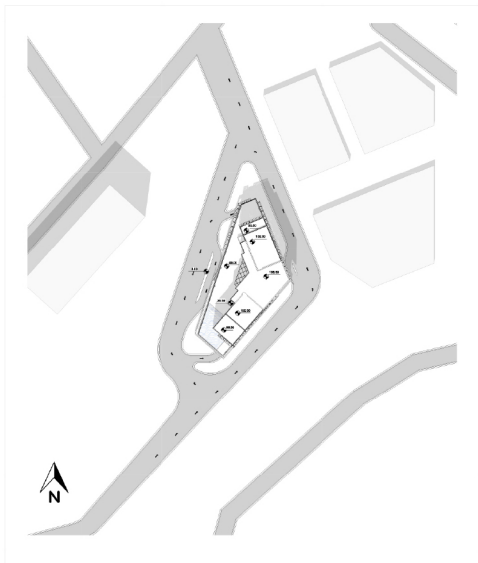
A residantial project in boulevard - Abdali with a triangle
small land. contains a 7 levels of podium and 18 levels of



Sourrounding areas are mostly a private areas
such as the parliament.

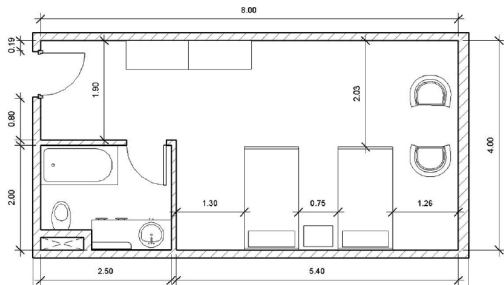


The site had a triangle shape and a street in each side with counterclockwise movement.



Site Plan

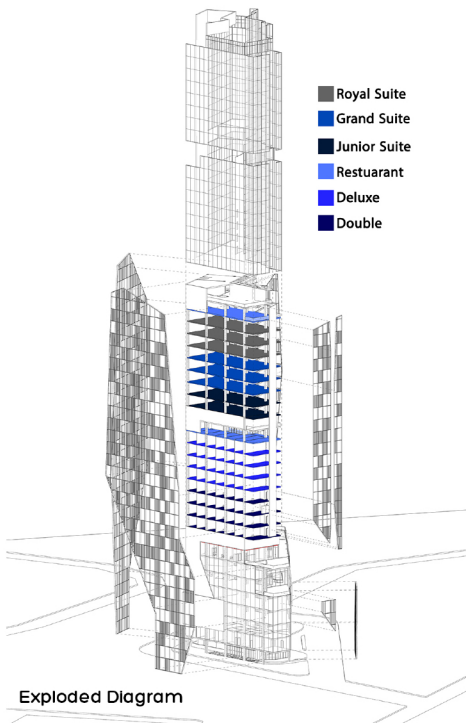
This is the Basic module for all rooms. With a basic dimensions 4'8 meters.



Module Plan



Module Section



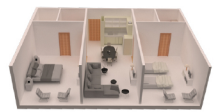
Exploded Diagram

Room Types

- Royal Suite
- Grand Suite
- Junior Suite
- Restuarant
- Deluxe
- Double



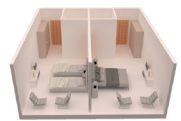
Royal Suite



Grand Suite



Junior Suite



Deluxe Suite



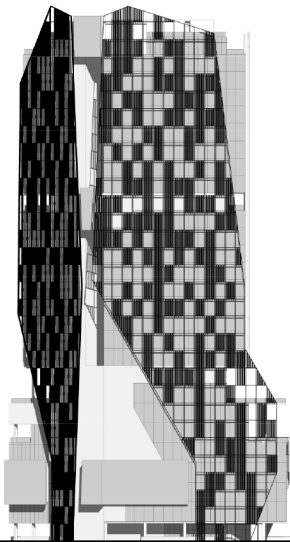
Double Suite

Elevations

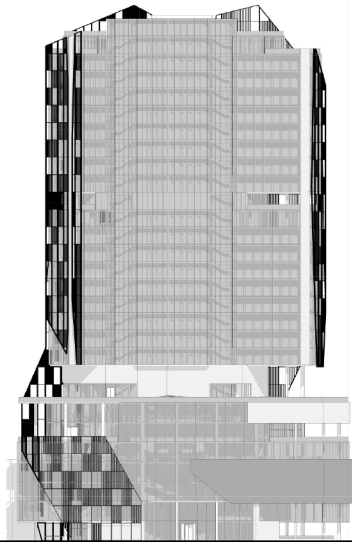


Mesh Details

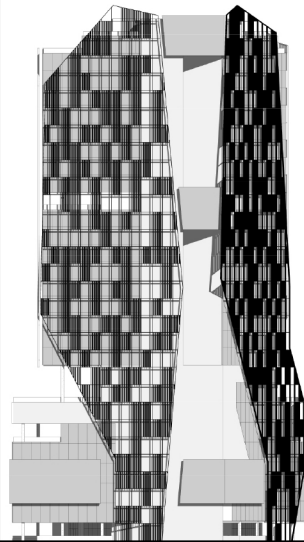
Randomized panelled skin were added to the tower facades in order to control and reduce the solar heat that is directed to the transparent elevations.



Northern-East Elevation

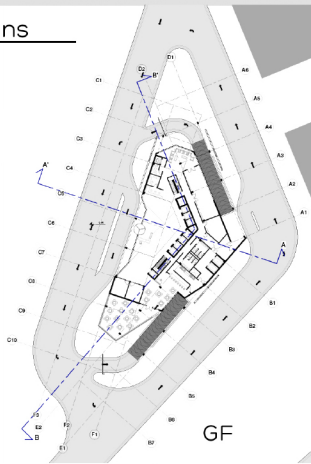


West Elevation

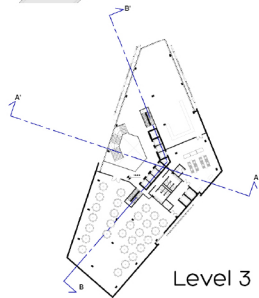


Southern-East Elevation

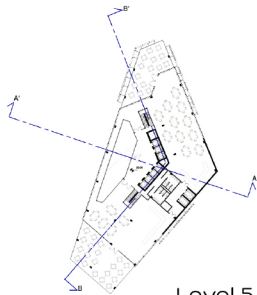
Plans



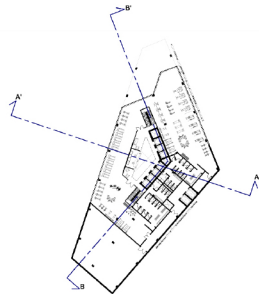
GF



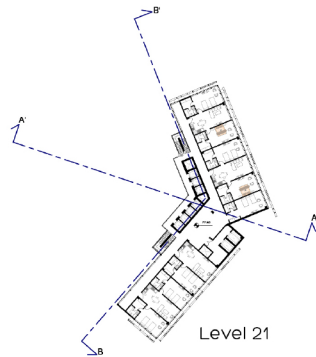
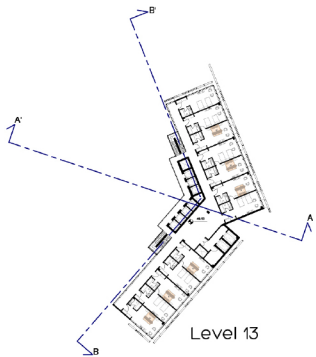
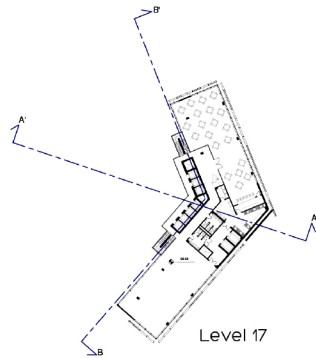
Level 3

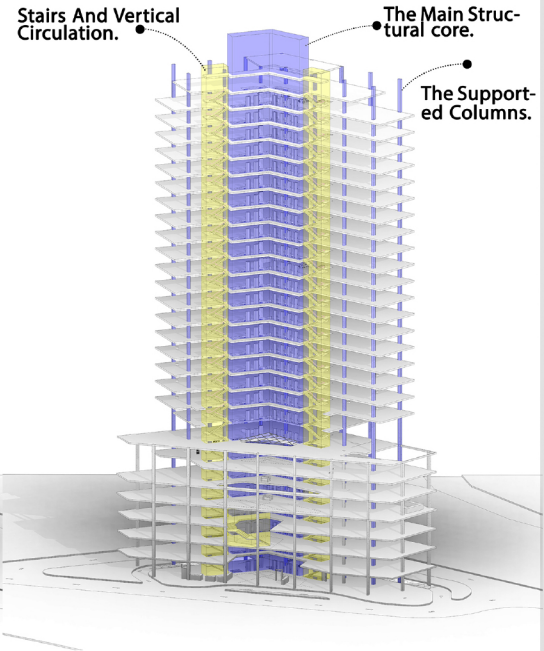
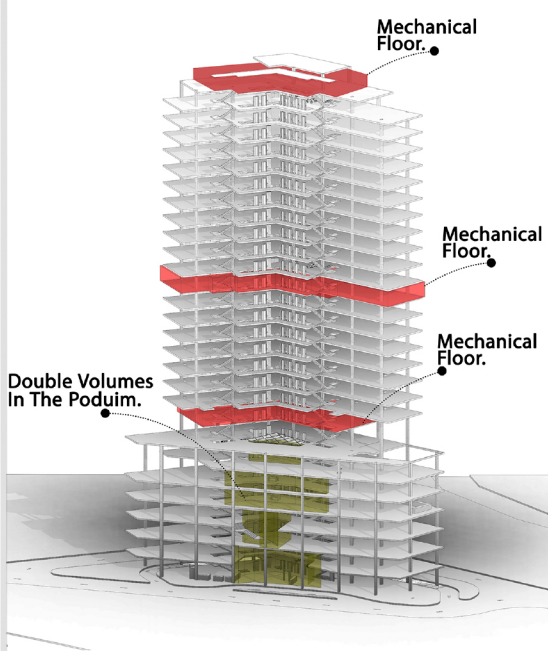


Level 5

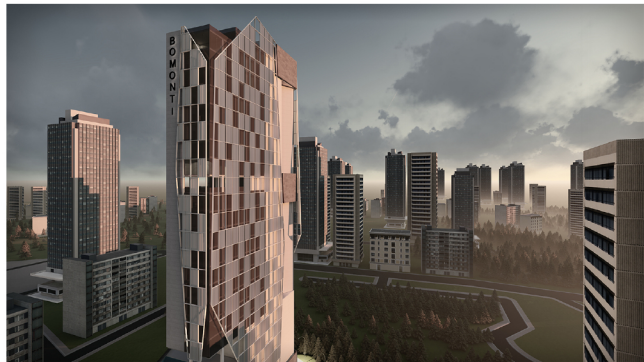
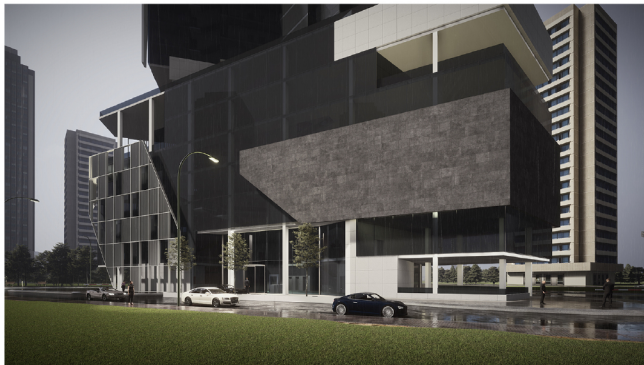


Level 6







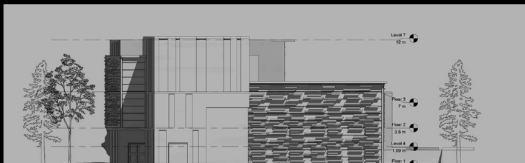


Switzerland Embassy

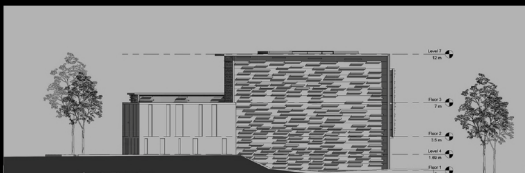
Design 3 Project
Supervised by Arch.Khaled AlOmari

The power and transparency was the most powerful factors that depended on.





North Elevation



South Elevation



West Elevation

Section A-A

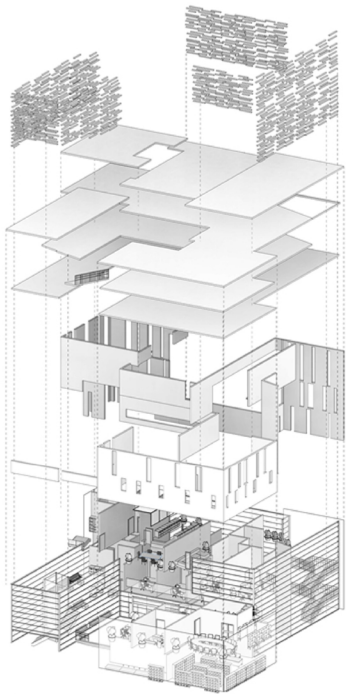


Section B-B









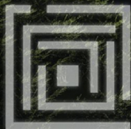
Exploded Diagram



Squares Academy School

Design 4 Project
Suoverised by Arch.Khaled AlOmari

The design was a competition for Unusual school in Amman. With a high level of all details.



SQUARES ACADEMY SCHOOL

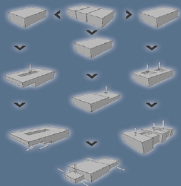
Concept

Starting from the idea of making a unique generation, this design started from local and international way and methods then started to improve due to many of factors to gain the requested experience, spaces making, image & learning love.

One mass was separated to 3 masses due to functionality, KG & nursery mass, Administration mass & Main school mass! Massive massing turned into light surfaces by using transparent facades, covered by colored panels to achieve an attractive colored image for children using De stijl familiar main colors; Yellow, Blue & Red, in addition to Green due to landscape force. Addition & subtraction were used to gain as much it could be of natural lighting, ventilation, spaces quality & experience.

Forces

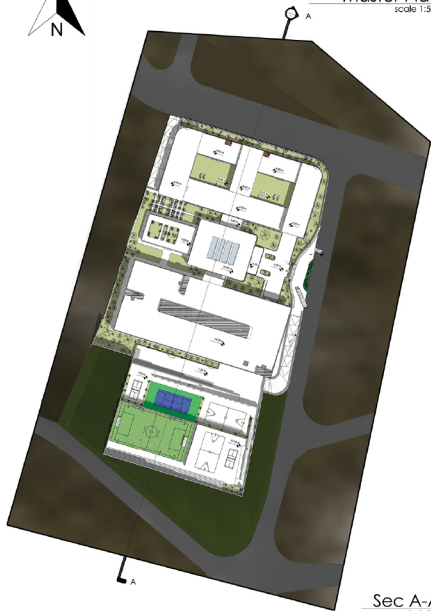
Areas & spaces
Psychology
Grid
Safety
Natural lighting
Natural Ventilation
friendly light material
Bright colorization
Low heights
Separation of ages
Slope



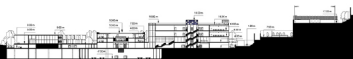
Arch. Design 4
Dr. Khalid Alomar
Arch. Ayat Khreisat



Master Plan
scale 1:500



Sec A-A
scale 1:500



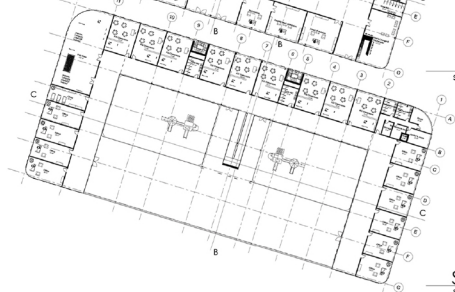


Kindergarten

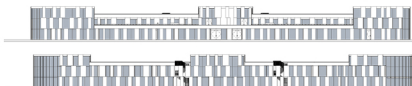
GF
scale 1:200



FF
scale 1:200



South
scale 1:200



North
scale 1:200



Sec B-B
scale 1:200



Sec C-C
scale 1:200





Administration

BF

scale 1:200



GF

scale 1:200



FF

scale 1:200



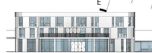
SF

scale 1:200



North

scale 1:200



East

scale 1:200



Sec D-D

scale 1:200



Sec E-E

scale 1:200

School Building



GF

scale 1:200

SF

scale 1:200

FF

scale 1:200

TF

scale 1:200

North

scale 1:200

East

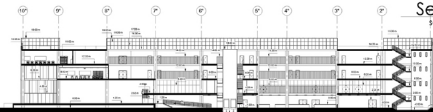
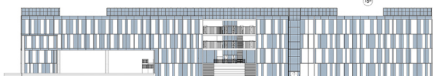
scale 1:200

Sec F-F

scale 1:200

Sec G-G

scale 1:200

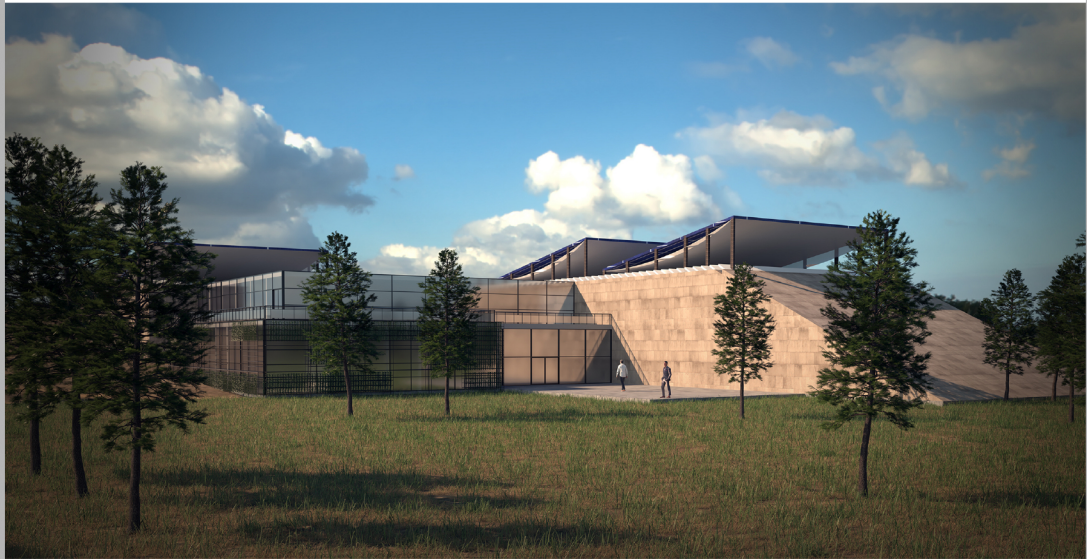




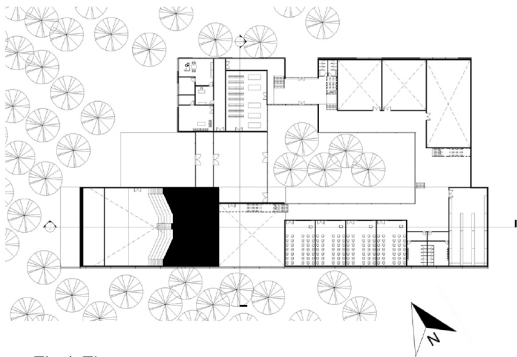
JU Research Center

Sustainable research center

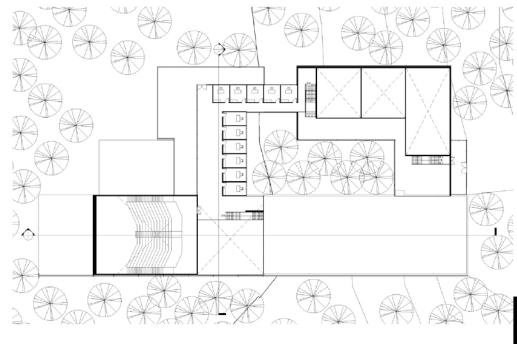
The project mainly focuses on the sustainable energy and the equation of sustainability that is equal output must be over than zero, all the costs you put in the building must turn it to an output.



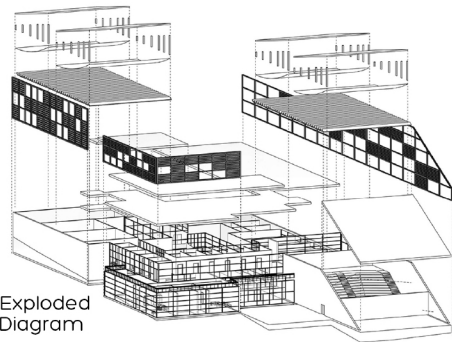
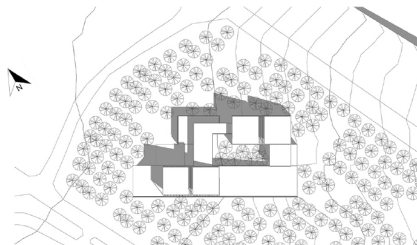
Ground Floor



First Floor



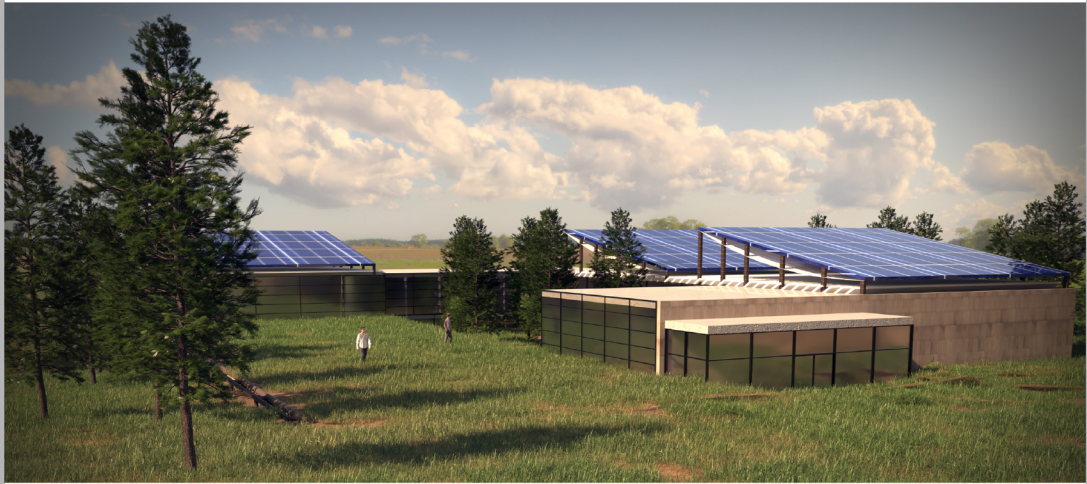
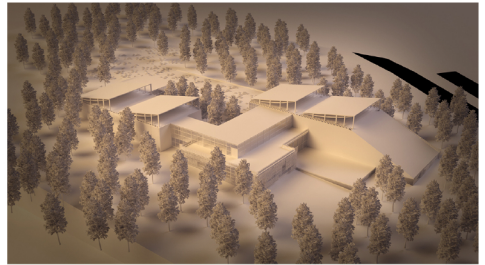
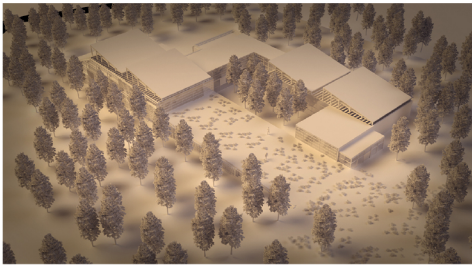
Site Plan



Exploded Diagram



North East Elevation



Memorial of Richard Meier

Design 5

Richard Meier architecture went through many stages of evolution, but eventually it settles in the pattern which has the following :

1. In terms of **Form** :

He used the basic shapes in most cases that he designed and he used layering and grids and openings.

2. In terms of **Colors** :

He preferred to use white color as a sign of purity in external and internal.

3. In terms of **Materials** :

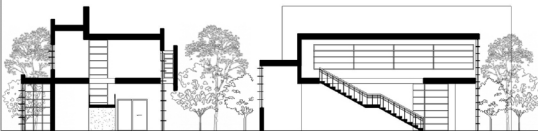
He always use white Alucobond with glass external and white concrete internal.

4. In terms of **Lighting** :

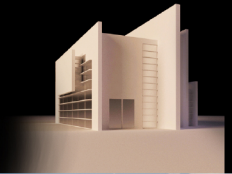
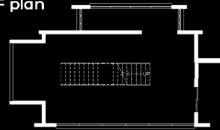
Always he allowed the light to come inside.

Section 1

Section 2



GF plan



Andalus JU Dorm Landscape Project



Redesigning the out door areas for the female students to have more privacy and adding the winter garden for increase the useful areas in winter.



Winter Garden

Created to have a nice place for the students and to make sure that they have a usable place. We make sure that the place contains a privacy by an enclosure with above eye level shrubs.

