

An architectural rendering of a modern interior space. The scene features curved, layered walls in shades of light blue, beige, and pink. In the foreground, there is a circular pool of water with a blue tint. To the left, a curved wooden bench or platform is visible, with several small, round tables and chairs arranged on it. The overall atmosphere is clean, minimalist, and futuristic.

# JISU HAN

SPATIAL EXPERIENCE DESIGNER  
SELECTED WORKS 2024-2026

# TABLE OF CONTENTS

## 01 TORAYA



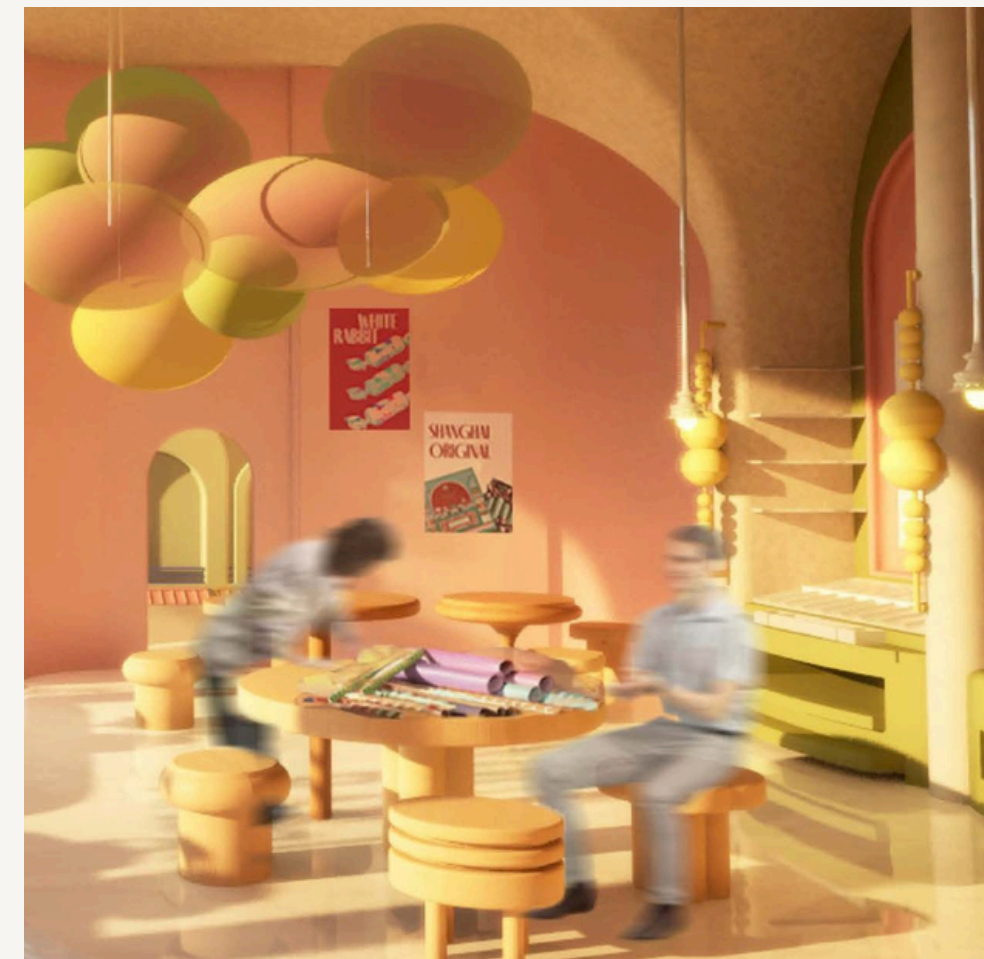
Branded Retail & Teahouse

## 02 THE NEST



Post Fire Artist Sanctuary

## 03 WHITE RABBIT



Branded Retail

Unreal Engine render of retail zone



# TORAYA

## Branded Retail & Teahouse

### Design Intent

A Toraya teahouse + retail concept in LA that translates tea and yokan into an approachable, contemporary ritual through “soft infusion.”

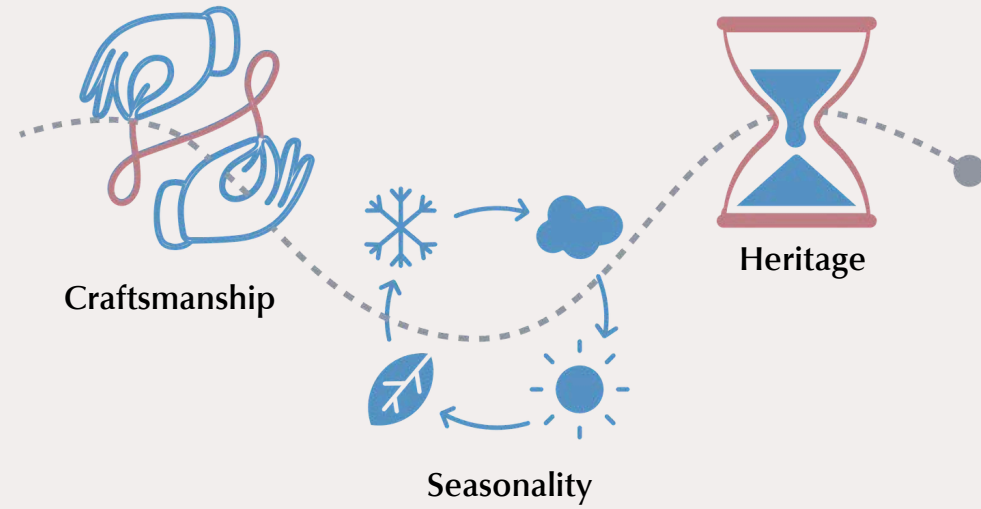
Collaboration with Nina Kawasaki  
(Tama University, Japan)

### Tools:



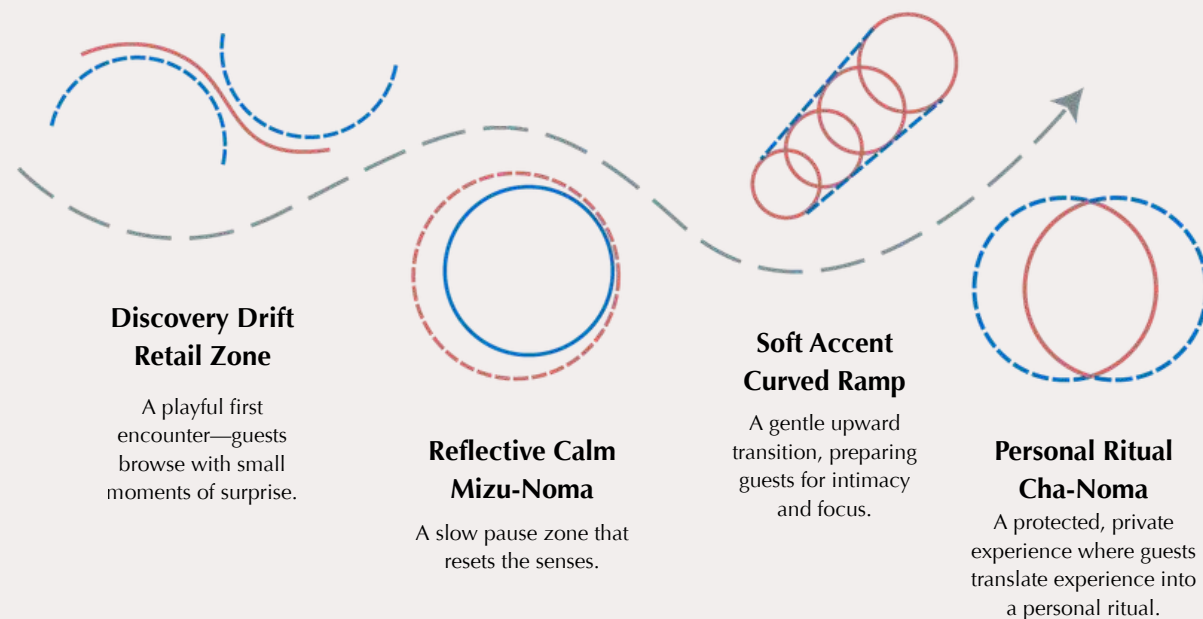
# CONCEPTS

## BRAND INSIGHT



Toraya's heritage and premium image are powerful—but the experience can feel formal and “special-occasion,” which makes it less approachable for younger guests. This project reframes Toraya in Los Angeles by preserving the ritual and craft while softening the atmosphere to something more open, everyday, and inviting.

## GUEST EXPERIENCE JOURNEY DIAGRAM



### Discovery Drift Retail Zone

A playful first encounter—guests browse with small moments of surprise.

### Reflective Calm Mizu-Noma

A slow pause zone that resets the senses.

### Soft Accent Curved Ramp

A gentle upward transition, preparing guests for intimacy and focus.

### Personal Ritual Cha-Noma

A protected, private experience where guests translate experience into a personal ritual.

## SPATIAL PROGRAMS

### Cha-Noma

An intimate tea chamber—quiet, focused, and separated from the public zone for a more personal experience.



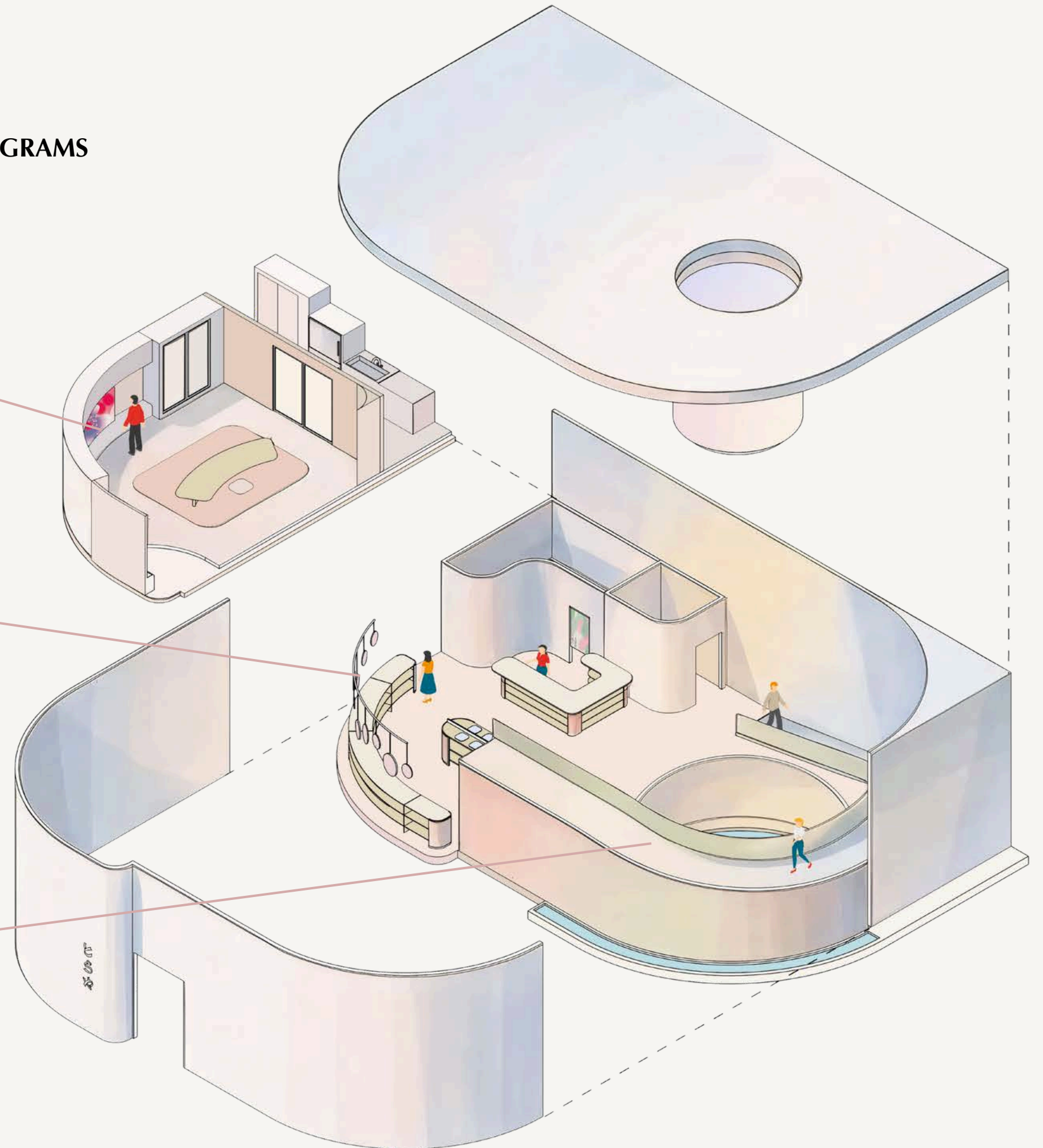
### Retail Zone

An open discovery space—displayed like artifacts, guiding guests through browsing, sampling, and gifting.



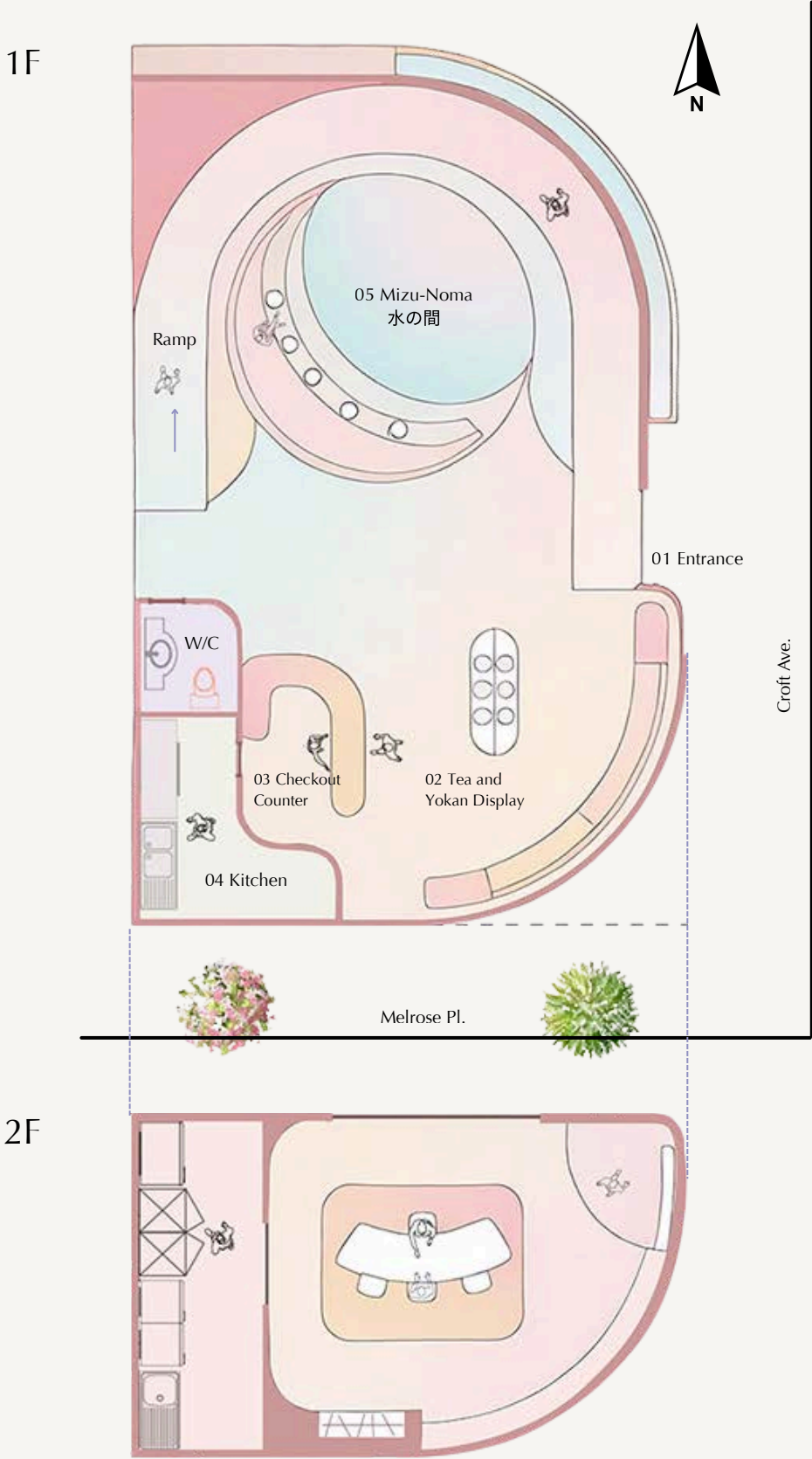
### Mizu-Noma

A reflective calm room anchored by water—soft light and gentle stillness create a slow moment before the tea ritual.



# SPACE PLANNING

## FLOOR PLAN

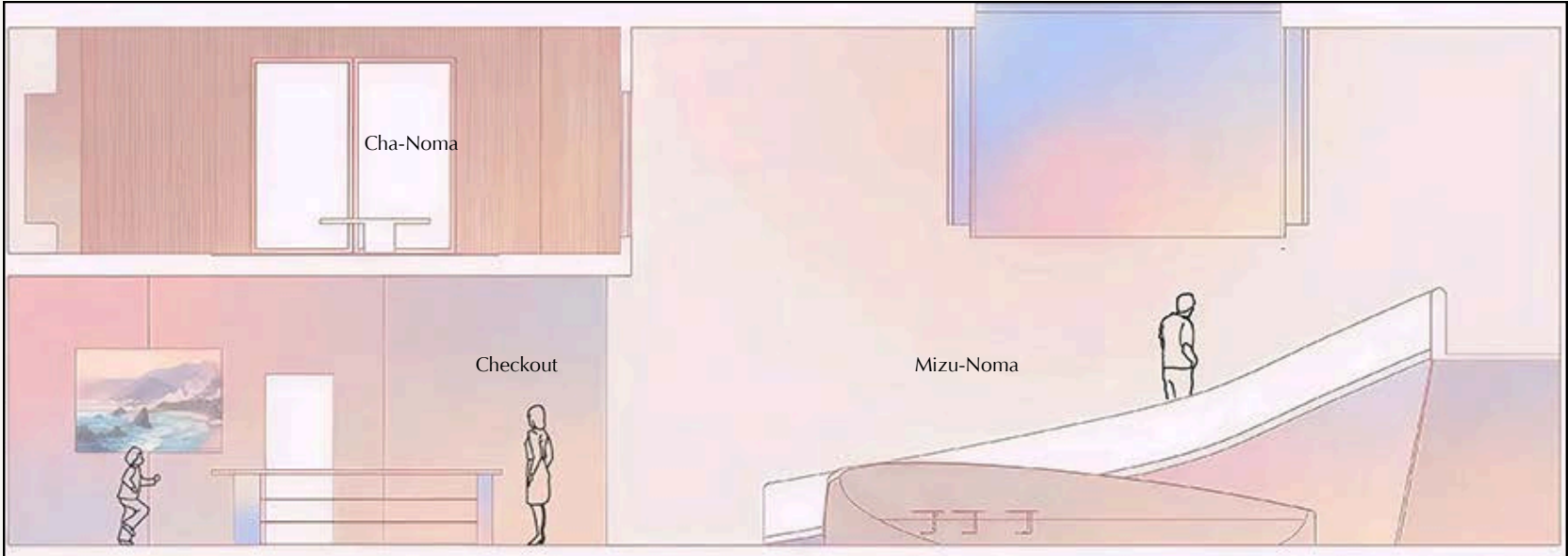


### LIST OF PROGRAMS

- 01 Entry and Greeting
- 02 Tea and Yokan Display
- 03 Checkout Counter
- 04 Kitchen
- 05 Mizu-Noma - Tea lounge with water and ceiling installation
- 06 Cha-Noma - Private yokan and tea pairing workshop area
- 07 Tea Prep Room

## SECTION DRAWINGS

Section Cut A



Section Cut B



# SPATIAL EXPERIENCE



## Reflective Calm (Mizu-Noma)

A reflective water space designed for stillness and sensory reset, allowing guests to pause, breathe, and gradually shift into a quieter rhythm.

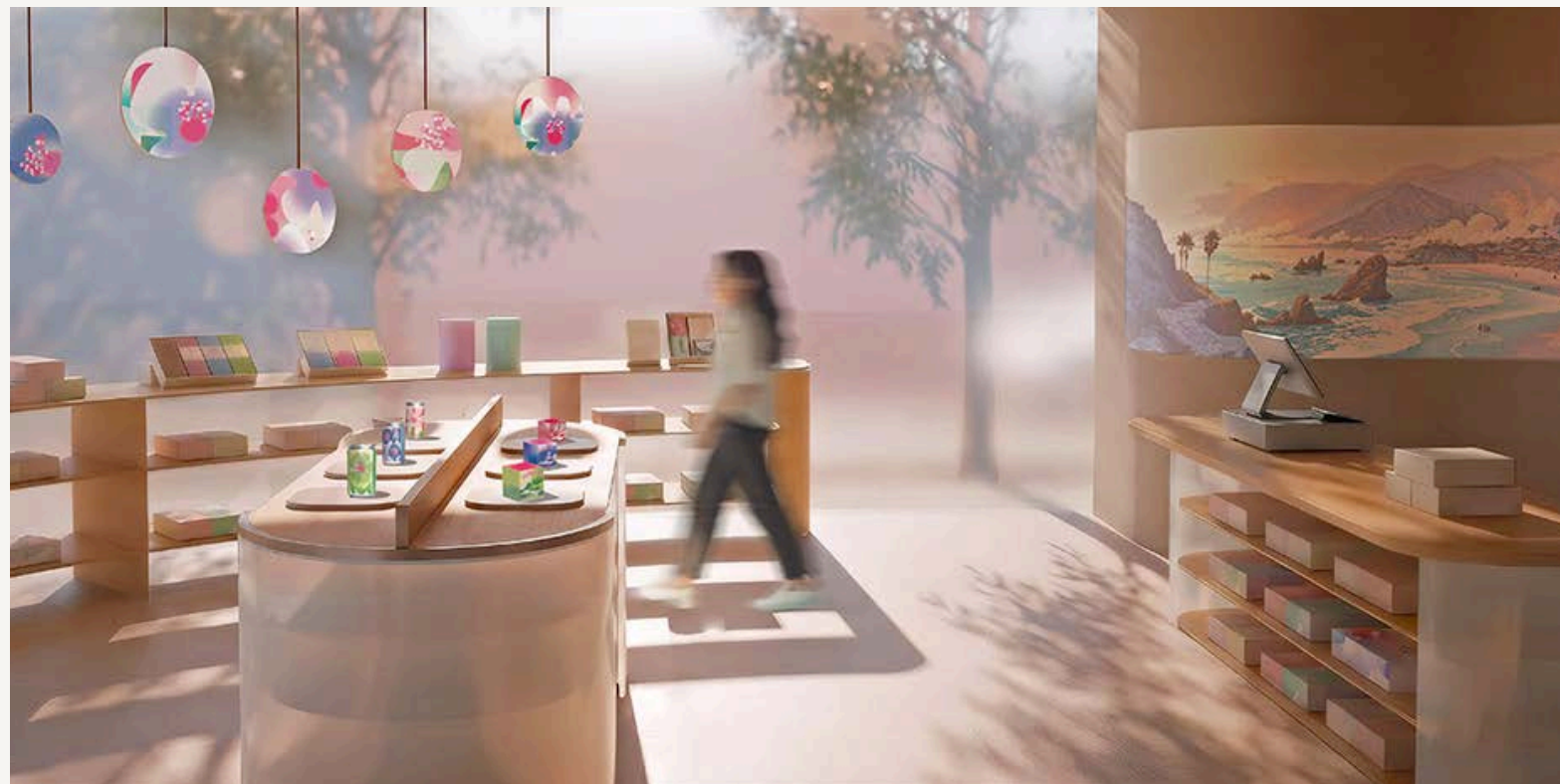


## Personal Ritual (Cha-Noma)

A dedicated ritual space supporting tea and yokan pairing through intimacy, focus, and controlled atmosphere.

## Discovery Drift (Retail Zone)

Guests encounter yokan and tea as collectible artifacts rather than merchandise. Spatial flow, display layering, and soft illumination invite closer observation and a heightened sense of discovery.



## YOKAN SERIES — CALIFORNIA STUDIES

Three yokan variations inspired by California landscapes—  
translating atmosphere into color, gradient, and form.

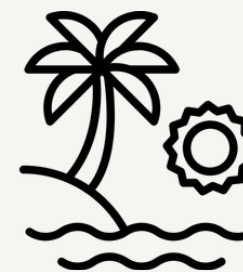
Tool used: Blender



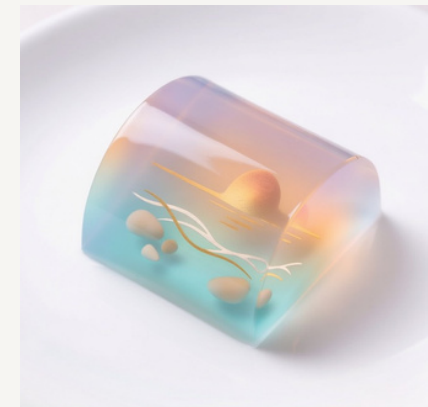
**Joshua Tree:**  
Desert Stillness



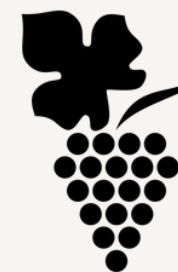
A warm red–pink gradient expressing quiet desert heat and stillness



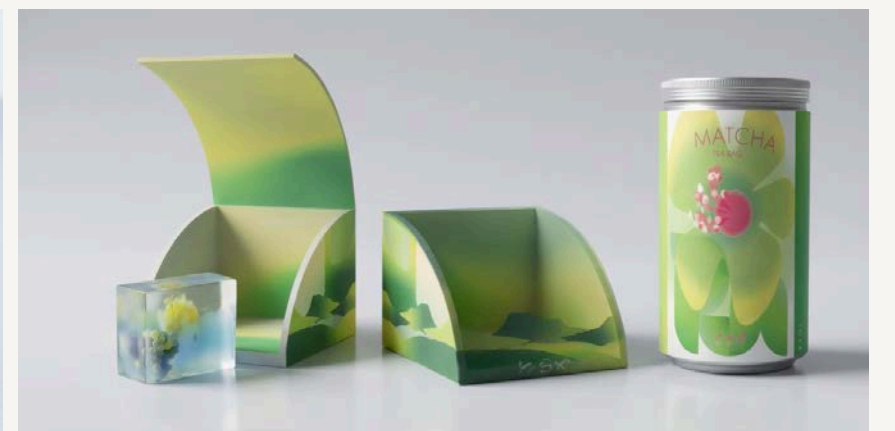
**Santa Monica:**  
Coastal Drift



Soft blue and pink tones reflect ocean movement and sunset light. The palette feels airy and relaxed—capturing the openness of the coast and everyday LA rhythm.



**Napa Valley:**  
Vineyard Layers



Layered green hues echo vineyard landscapes and seasonal cultivation. The color story emphasizes depth, craft, and rhythm—like matcha tones shaped by time.



Unreal Engine render

# THE NEST

## Rebuilding Community for Altadena

### Design Intent

The Nest is a resilient artist community hub designed for healing and renewal after the Eaton Fire—providing spaces for making, gathering, and restoration through landscape, open circulation, and self-sufficient systems.

Collaboration with Crystal Chng (ArtCenter)

### Tools:



## AFTERMATH: EATON FIRE, 2025

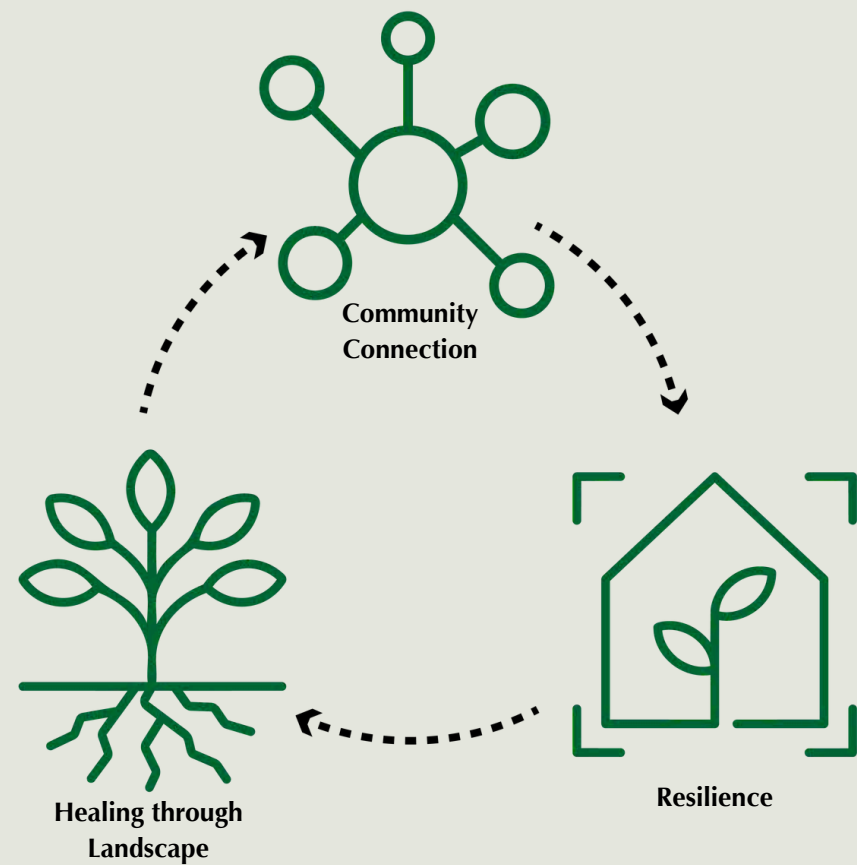


Image source: NBC News — Eaton Fire coverage

Following the 2025 Eaton Fire, Altadena experienced widespread loss of homes and community infrastructure. The Nest reimagines rebuilding as more than replacement. The project positions architecture as a catalyst for resilience, gathering, and restoration.

# CONCEPT

A healing landscape at the center reconnects the community—supported by resilient systems.



## Community Connection

Circulation and program layout promote interaction, collaboration, and shared experience.

## Healing Through Landscape

Gardens and ecological systems provide restoration, sensory calm, and environmental performance.

## Resilience

Fire-resistant materials and self-sufficient systems ensure durability, safety, and adaptability

Community anchors within walking distance



Altadena Public Library



Christmas Tree Lane



Altadena Community Center



Pasadena Waldorf School

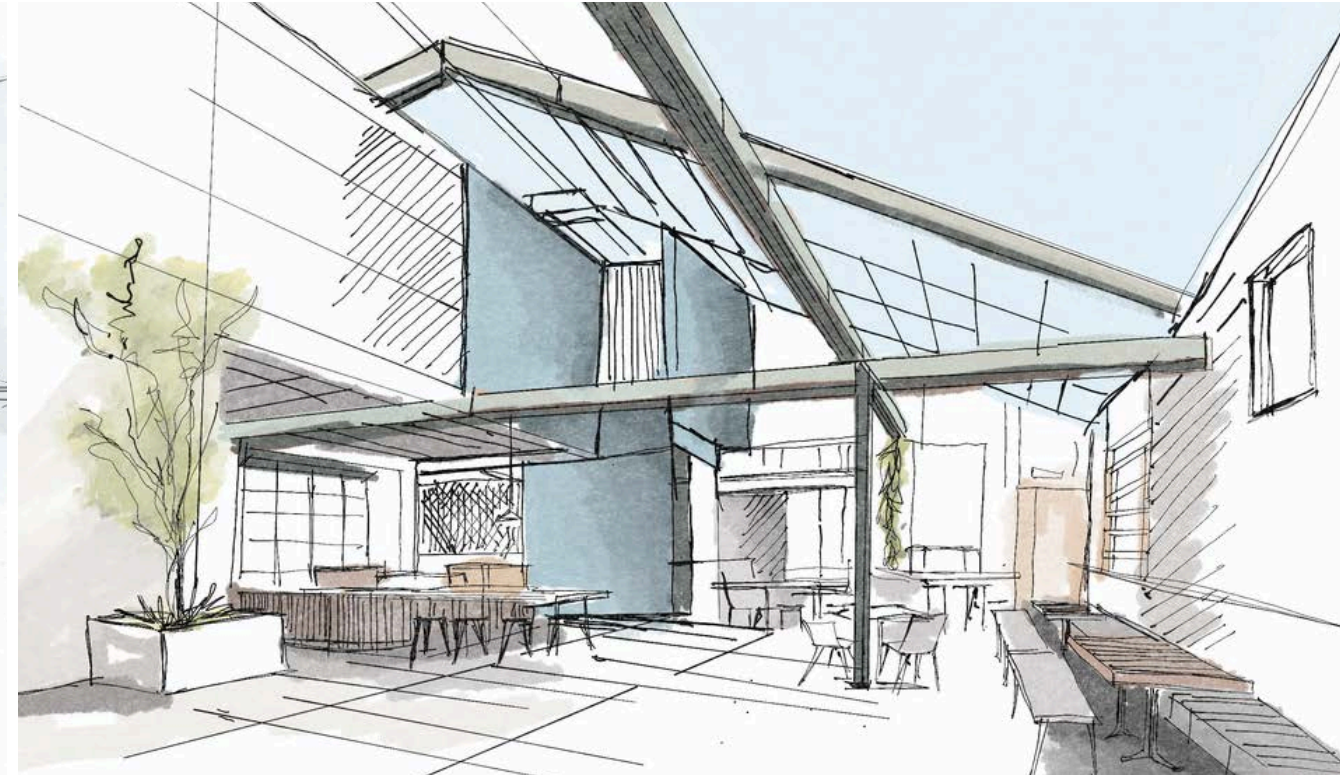
# SITE CONTEXT



**SITE — 620 E MARIPOSA ST, ALTADENA, CA**

Situated across from the Altadena Library, The Nest is a daily community anchor, supporting recovery through shared making, gathering, and landscape-based healing.

# CONCEPT DEVELOPMENT



Sketch explorations investigating form, circulation, and vegetation integration—examining how communal gathering and outdoor spaces could coexist within a resilient spatial framework.

# SPATIAL PROGRAM

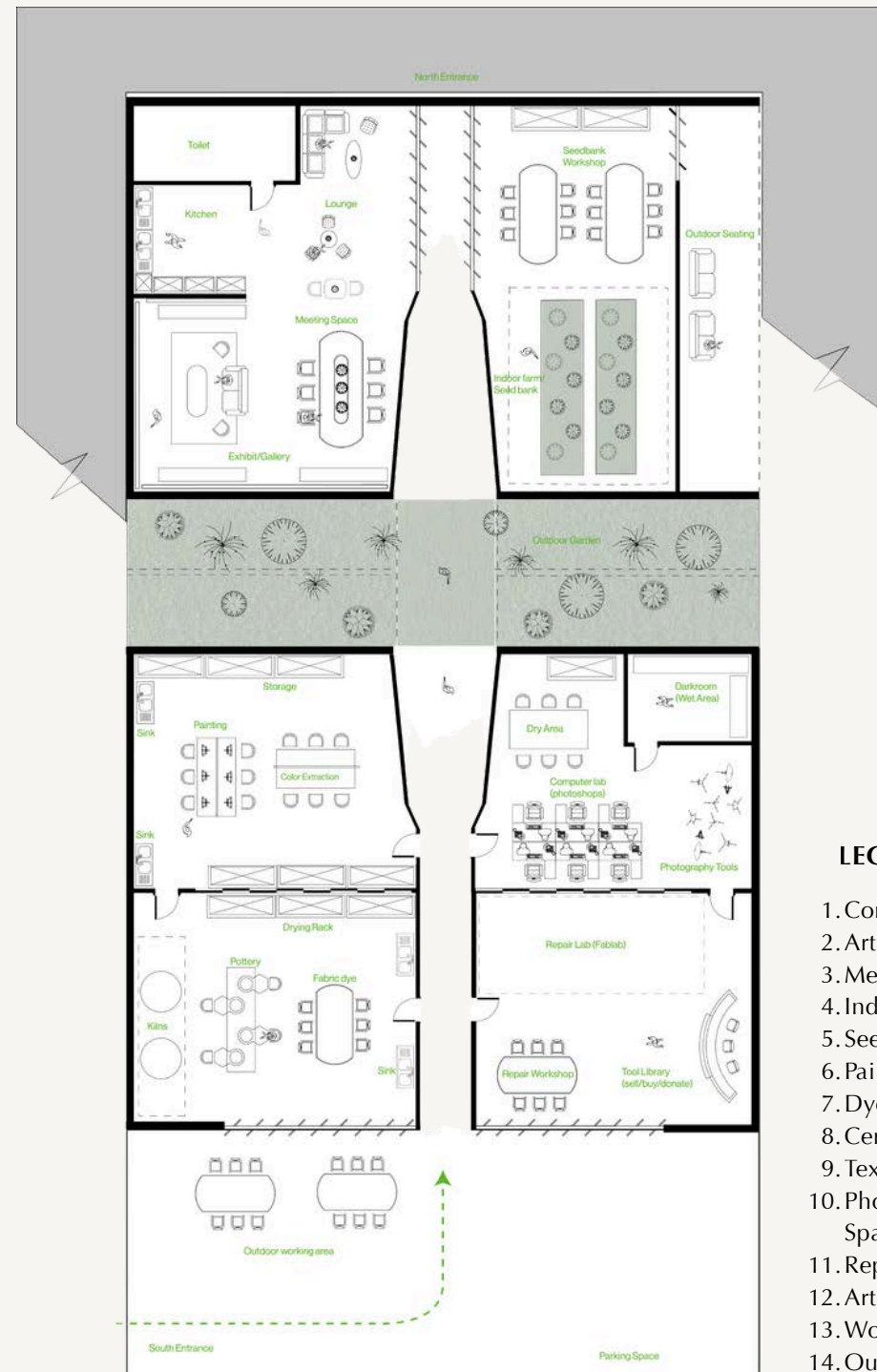
Programs include:

Central Garden | Indoor Farm | Repair Lab | Tool Library | Artist Studios | Community Space

Exterior floorplan  
(Ground Level)



Interior floorplan  
(Underground)



## LEGENDS

1. Community Lounge
2. Art Exhibit Gallery
3. Meeting Area
4. Indoor Farming
5. Seed Bank
6. Painting Studio
7. Dye Extraction Area
8. Ceramics Throwing Area
9. Textile Space
10. Photography Wet and Dry Spaces
11. Repair Lab
12. Art Supplies Store
13. Workshop Table
14. Outdoor Garden



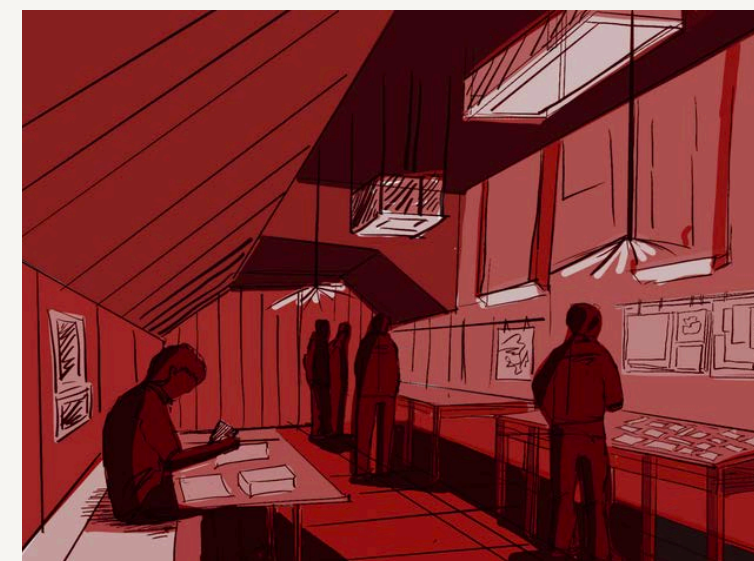
Repair Lab & Tool Library



Indoor Farm Ecosystem



Ceramics Studio



Photography Studio



Painting Studio

# FIRE-RESILIENT MATERIAL STRATEGY

Materials were strategically selected to enhance fire resistance, durability, and environmental performance, reinforcing the project's broader goals of safety, longevity, and resilience.

## Vegetation Layer (Fire-Resistant Planting Mix)



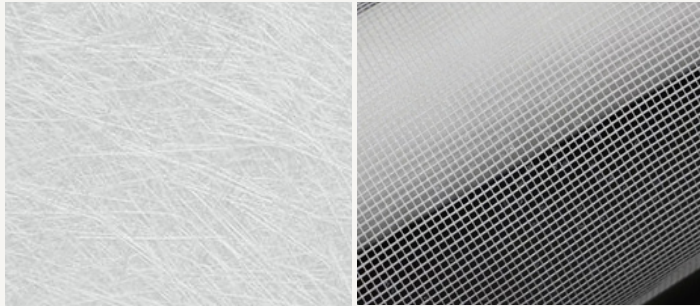
Fire-resistant, drought-tolerant plants (e.g., Sedum spp., California-native succulents, yarrow, blue fescue).  
 Finishing: Low-maintenance, extensive green roof vegetation.  
 Function: Stormwater absorption, biodiversity, and natural dye sources.  
 Fire Resistance: High (non-flammable species, low fuel load).

## Fiber-Reinforced Concrete (FRC)



Product: Cast-in-place fiber-reinforced concrete with SCM blend.  
 Wall Type: 8" thick load-bearing wall (optional interior insulation)  
 Finish: Board-formed texture with sealer for durability, no paint  
 Fire Rating: 3–4 hour fire-resistance rating (ASTM E119)

## Triple-glazed Fiberglass Window Frames

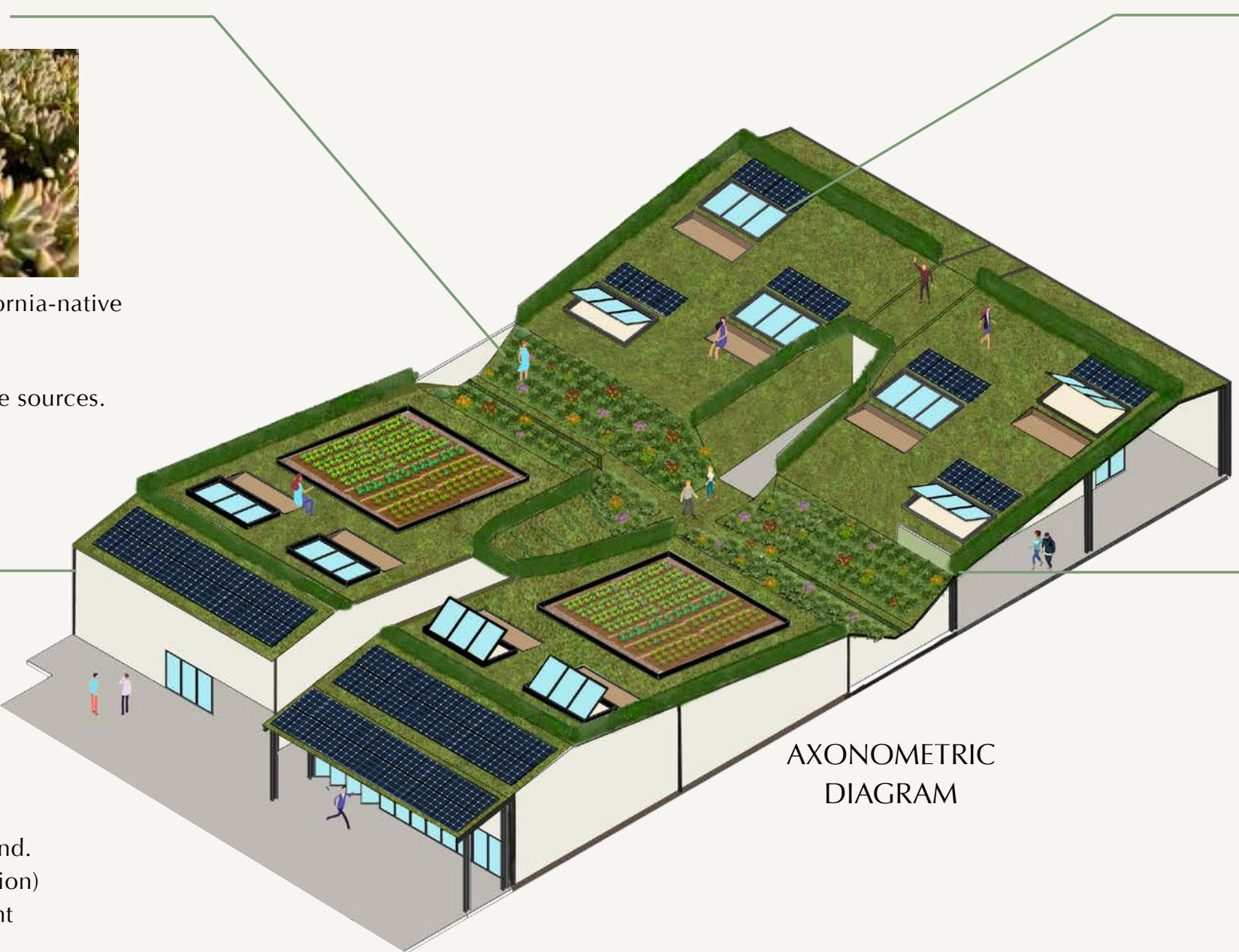


Frame Material: Pultruded fiberglass with thermally broken core  
 Glazing: Triple-pane low-E with argon fill  
 Fire Rating: Meets WUI requirements with tempered glass  
 Finish: Ebony or Stone White (matte exterior, neutral interior)

## Standing Seam Metal Roof with Zinc-Aluminum-Magnesium Alloy Coating (ZAM®)

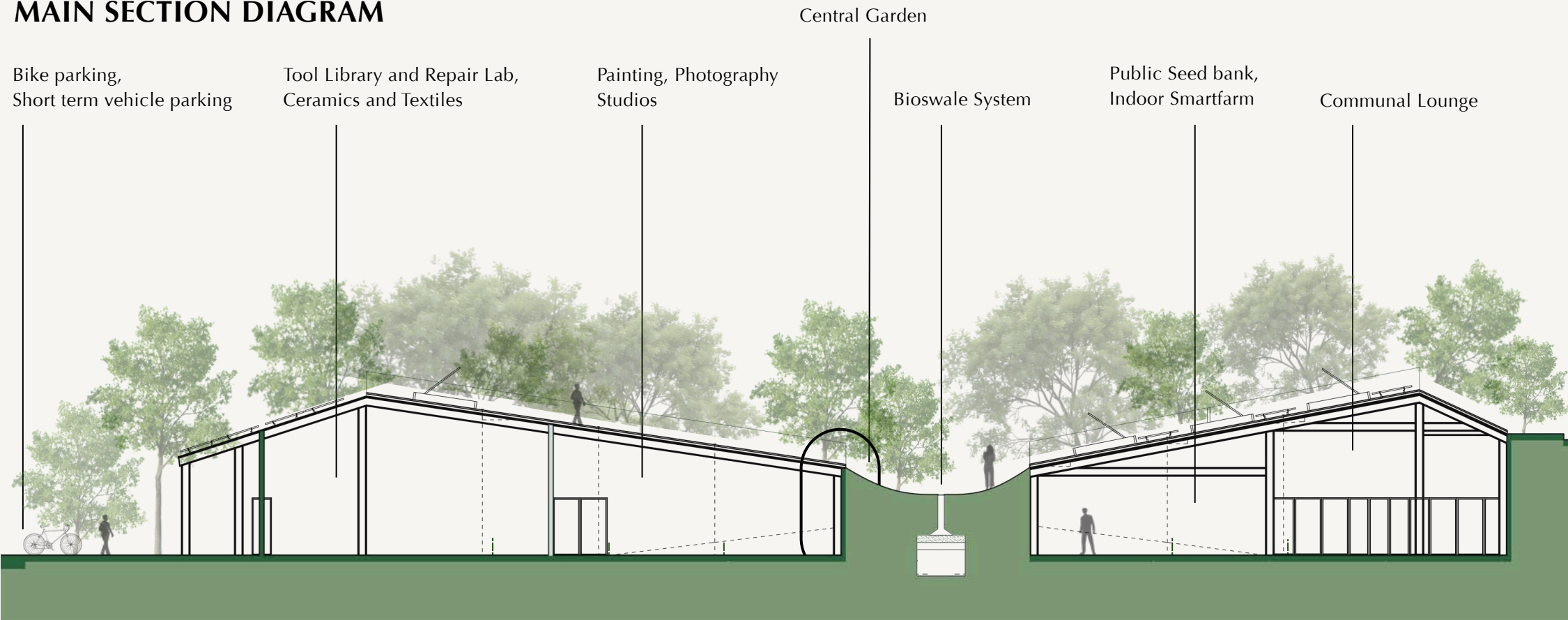


Product: ATAS International – Standing Seam Roof  
 Panel Type: 16" wide standing seam with concealed clips  
 Coating: PVDF finish for color stability + corrosion resistance  
 Fire Rating: Class A

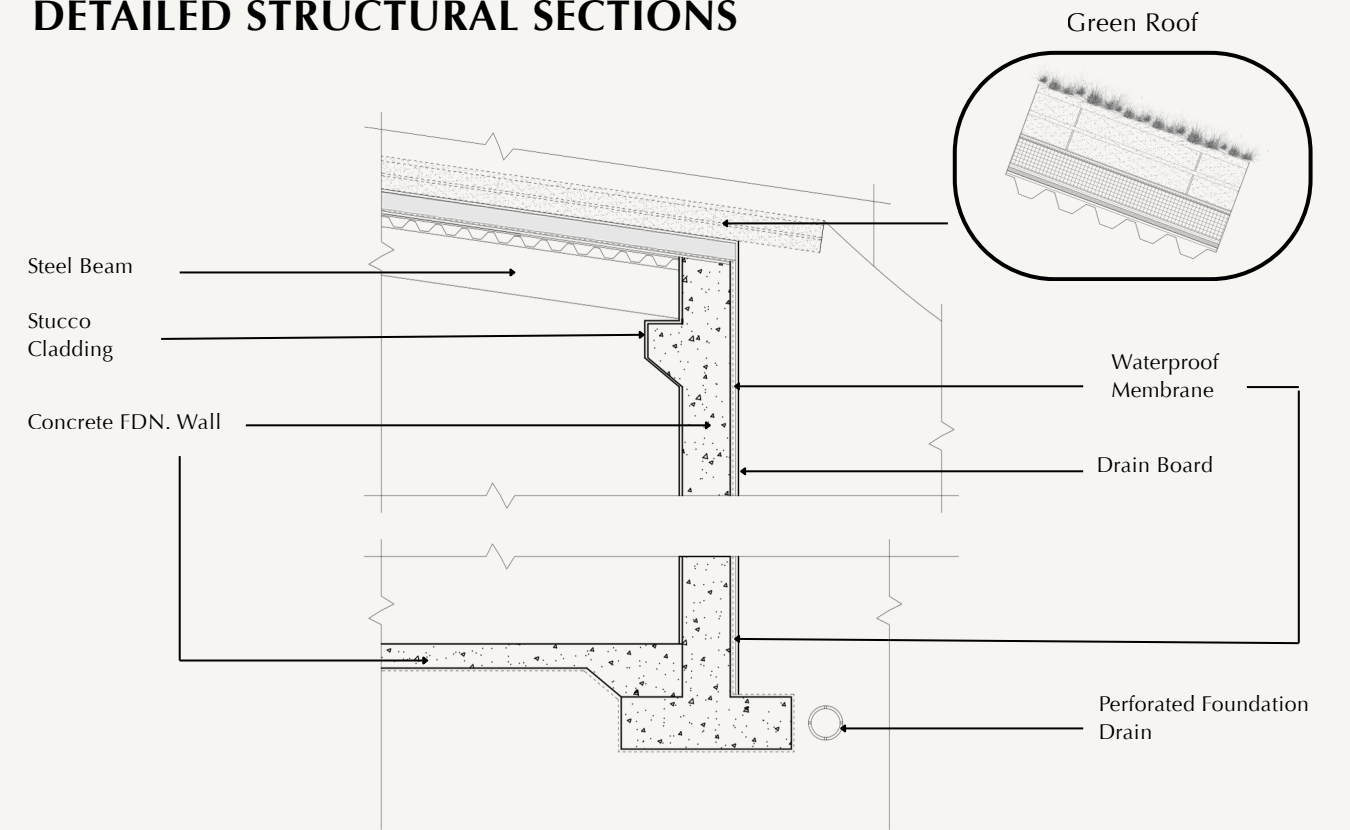


# RESILIENCE SYSTEMS

## MAIN SECTION DIAGRAM



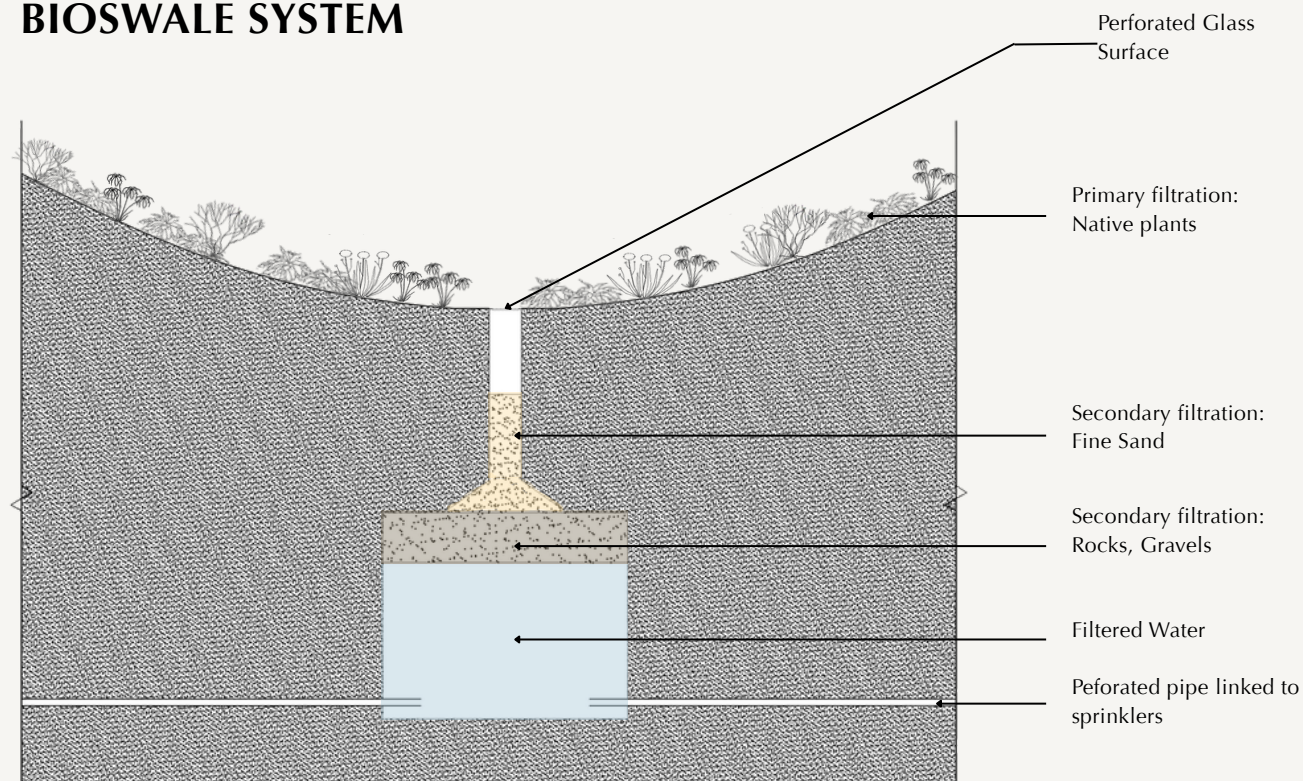
## DETAILED STRUCTURAL SECTIONS



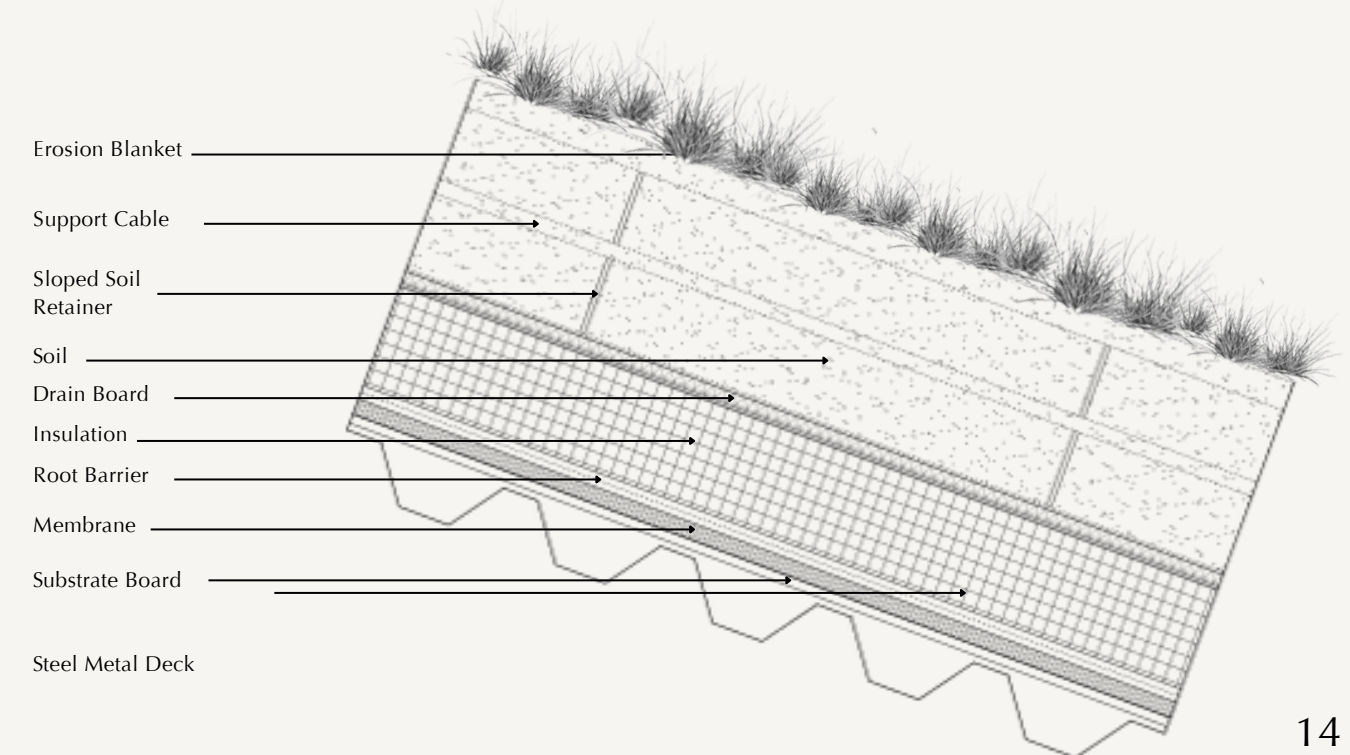
## BIOSWALE SYSTEM

Studios, communal spaces, and landscape systems are vertically integrated to balance safety, environmental performance, and spatial openness.

Bioswale and green roof assemblies support filtration, passive cooling, and long-term ecological resilience.



## GREEN ROOF SYSTEM



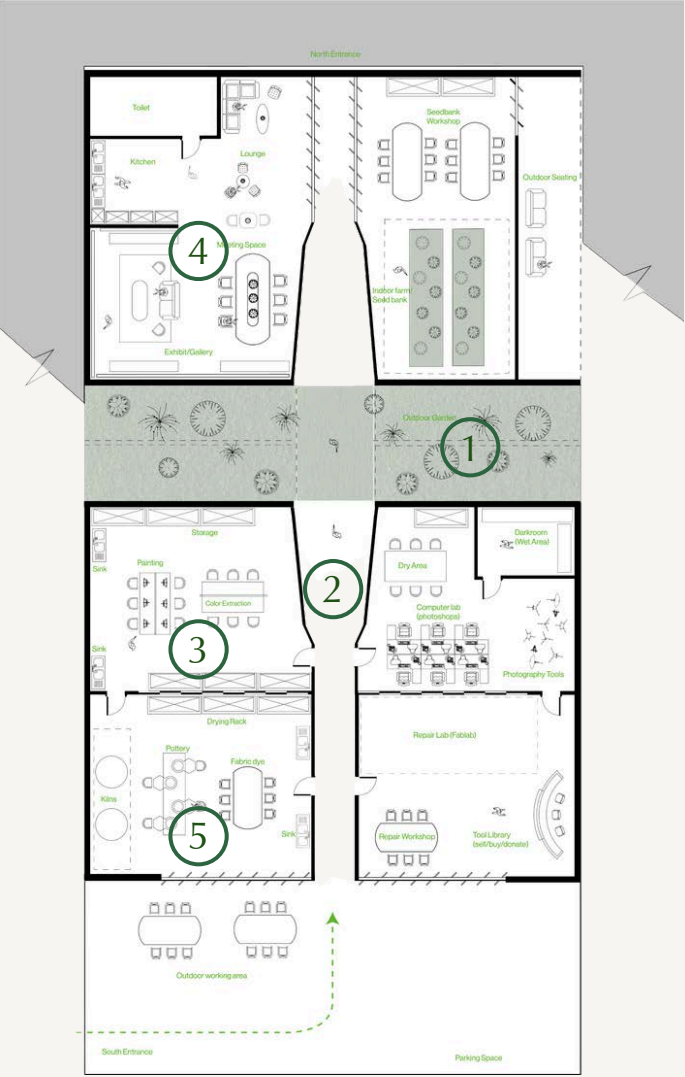
# SPATIAL EXPERIENCE



1) Central Garden: Landscape as social and spatial anchor.



2) Garden Circulation: Movement structured through nature.



3) Painting Studio: Focused creation with garden adjacency.



4) Community Lounge: Shared rest, dialogue, and display.



5) Ceramics Studio: Material exploration and craft practice.



# WHITE RABBIT

## Experiential Retail Environment

### Concept Narrative

White Rabbit reimagines retail as a ritualized experience, transforming gifting from a transaction into an intentional act of care, memory, and connection.

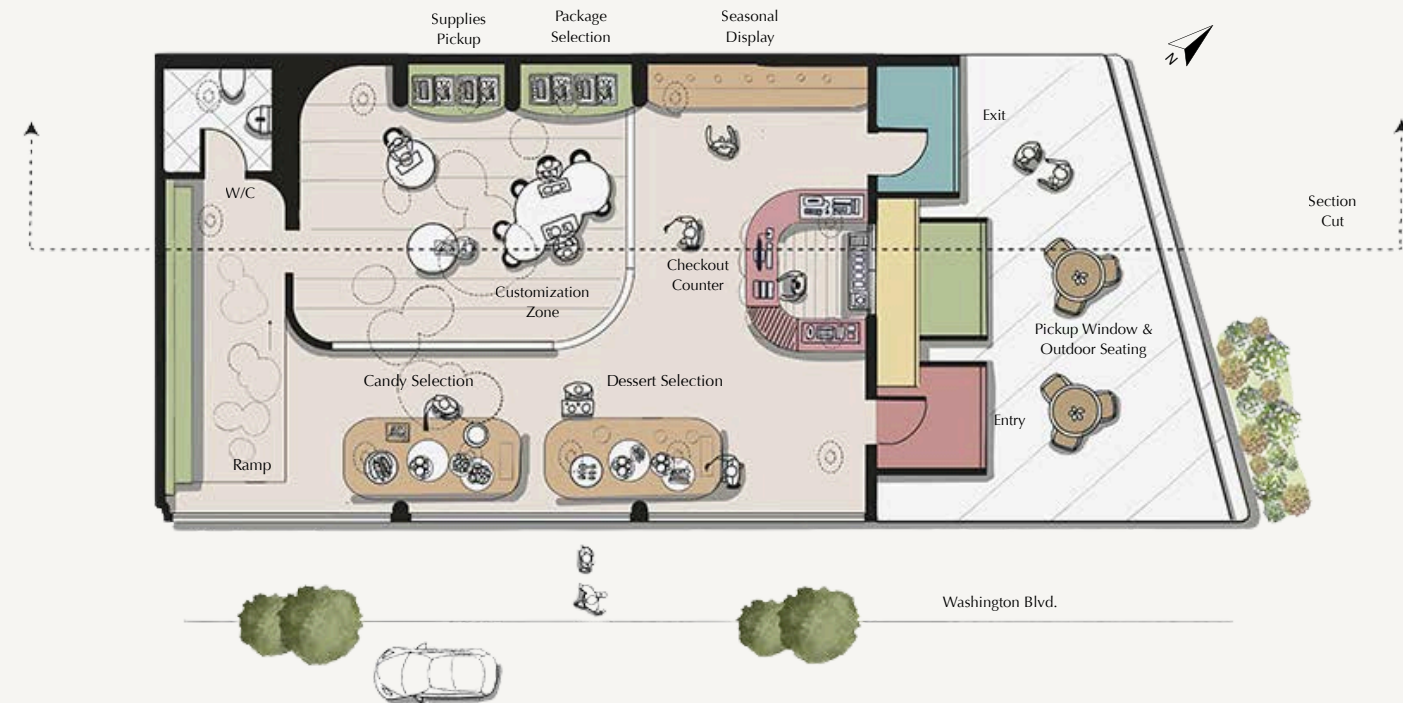
### Tools:



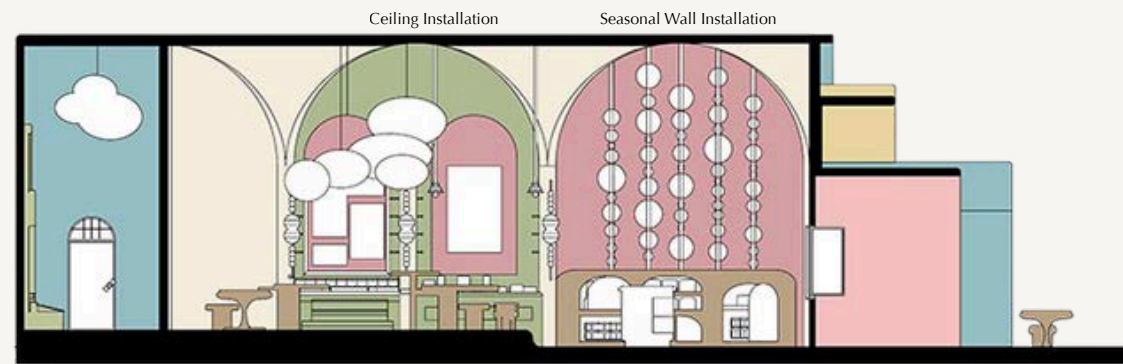


**EXPLODED AXONOMETRIC  
DIAGRAM**

**FLOORPLAN**



**SECTION DRAWING**



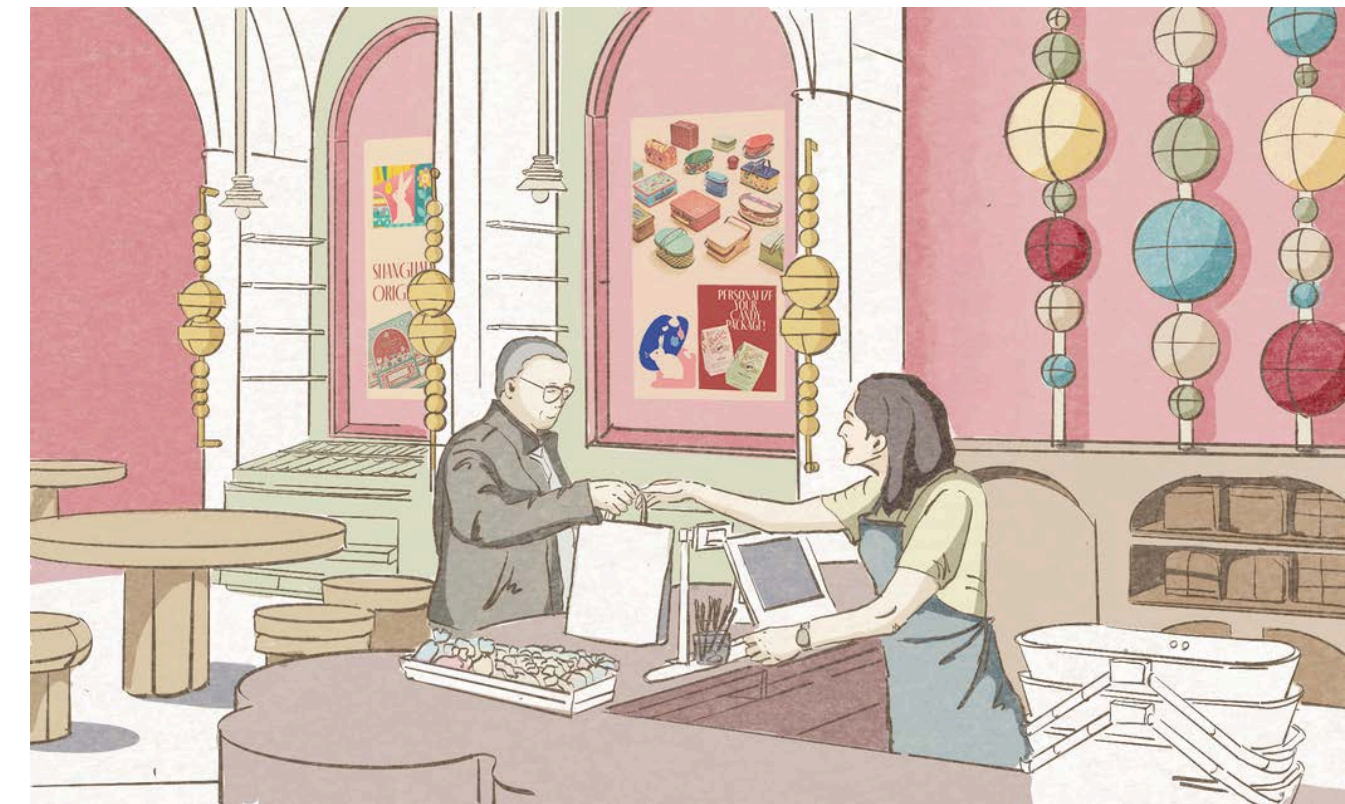
**DESIGN STRATEGY: A JOURNEY OF SENDING LOVE**

The spatial experience is organized as a one-way journey that mirrors the act of sending love. Visitors move through a carefully sequenced path—from selection to customization to exchange—so that each step unfolds with intention. This gentle directional flow creates focus and emotional engagement without feeling prescriptive, supporting moments of care, playfulness, and reflection throughout the gifting process.

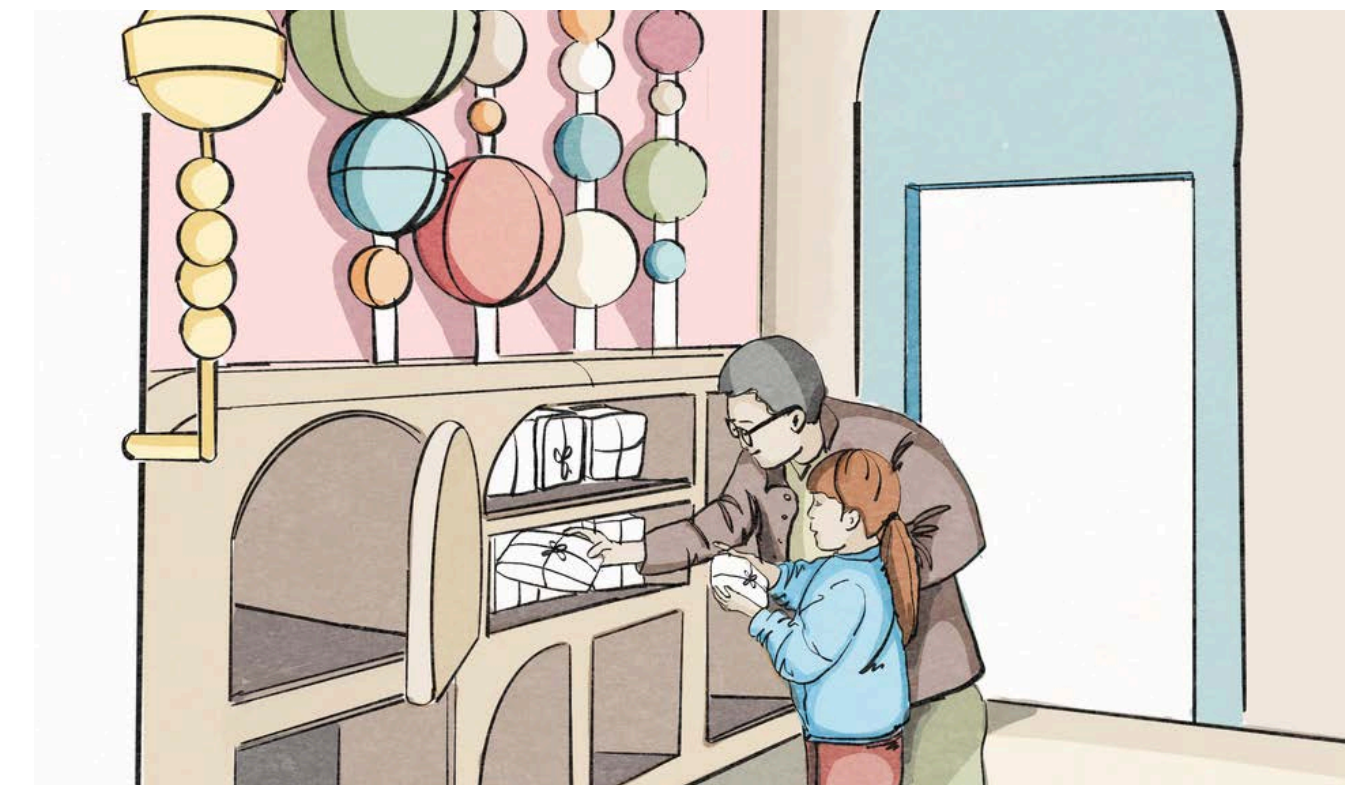
# NARRATIVE SKETCH EXPLORATIONS



Customization Zone: Visitors personalize their selections by wrapping and composing candy packages, transforming gifting into a tactile, hands-on ritual.



Dessert Counter: A retail counter offering LA-limited White Rabbit pastries, blending nostalgia with a contemporary local flavor experience.



P.O. Box: A dedicated mailing station where guests send curated packages to loved ones, extending the experience beyond the store.

# SPATIAL EXPERIENCE



Exterior Window & Signage: Storefront graphics shaping the street presence.



Candy Selection Zone: Retail display designed for exploration and curation.

Customization Zone: Interactive wrapping and personalization experience.

Thank you for your time and consideration.

Jisu Han  
ArtCenter College of Design  
Pasadena, CA  
Email: [jisuhan@gmail.com](mailto:jisuhan@gmail.com)  
Instagram: [jisuhan.design](https://www.instagram.com/jisuhan.design)