

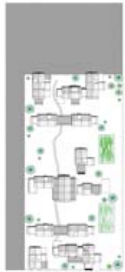
New Orleans

GroCommunity

This is a plan for a potential GroHomes community in New Orleans. GroHomes is an efficient modular building system flexible to change and grows to suit the diverse demands of its residents. This is a sequence of drawings showing the possible growth of a community block using this system.



New Orleans
GroHomes Evolution



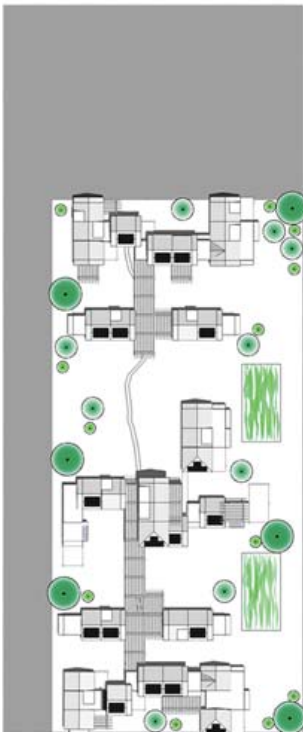
Phase 3



Phase 2



Phase 1

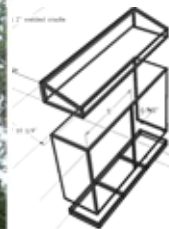


Final Phase



GroHome Construction

A lot of time was dedicated to the construction of a prototype home. I spent time designing and fabricating the Fat Wall frame -- part of a plug-and-play system with various options including a bathroom, kitchen and hide-a-way bedroom set.



Summer 2007
Center for Maximum
Potential Building Systems
8604 FM 969
Austin, TX 78724