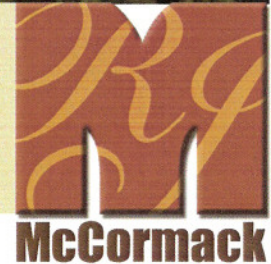




parkside at the rivers

PARKSIDE IV AT THE RIVERS
Cape Coral, Florida
full architectural services



McCormack



A Fresh View Of the River

When developers approached McCormack about Parkside, they were hoping to take advantage of the site's water and park features. The firm developed an award-winning six-story, 26-unit residential building design that made the most of the natural surroundings by including generous exterior terraces, large, open kitchen areas and spectacular views overlooking the river and park. Each of the units in the building faces the river or city park and includes dramatic floor-to-ceiling glass treatments. The vibrant colors of the building exterior create a fresh look in contrast to the more muted buildings nearby.



Year of Completion: 2006

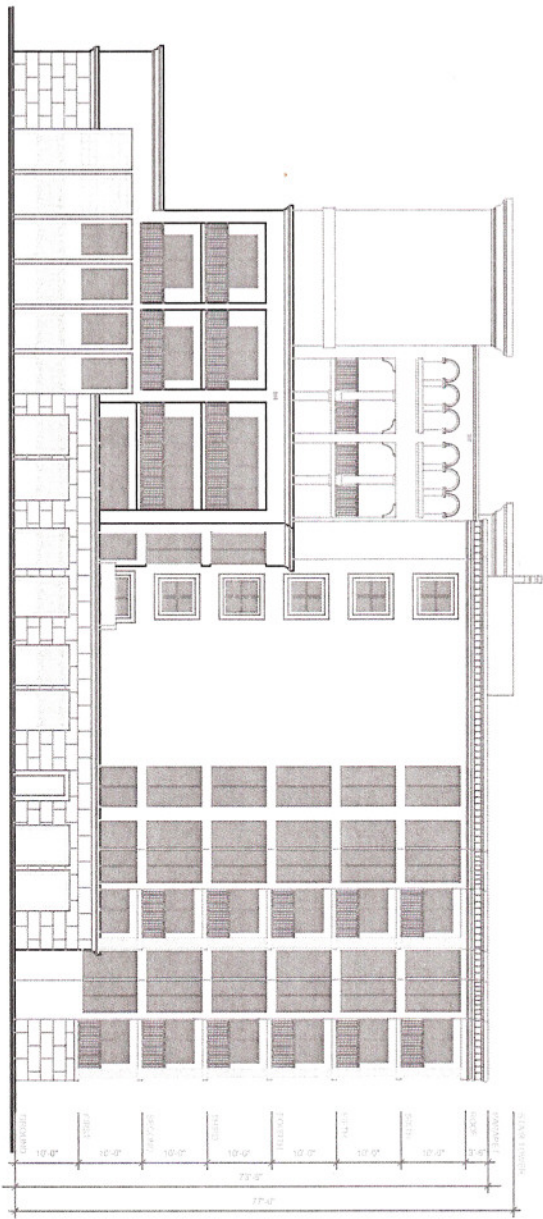
Client: BBL National; Albany, NY

McCormack Project Leaders:

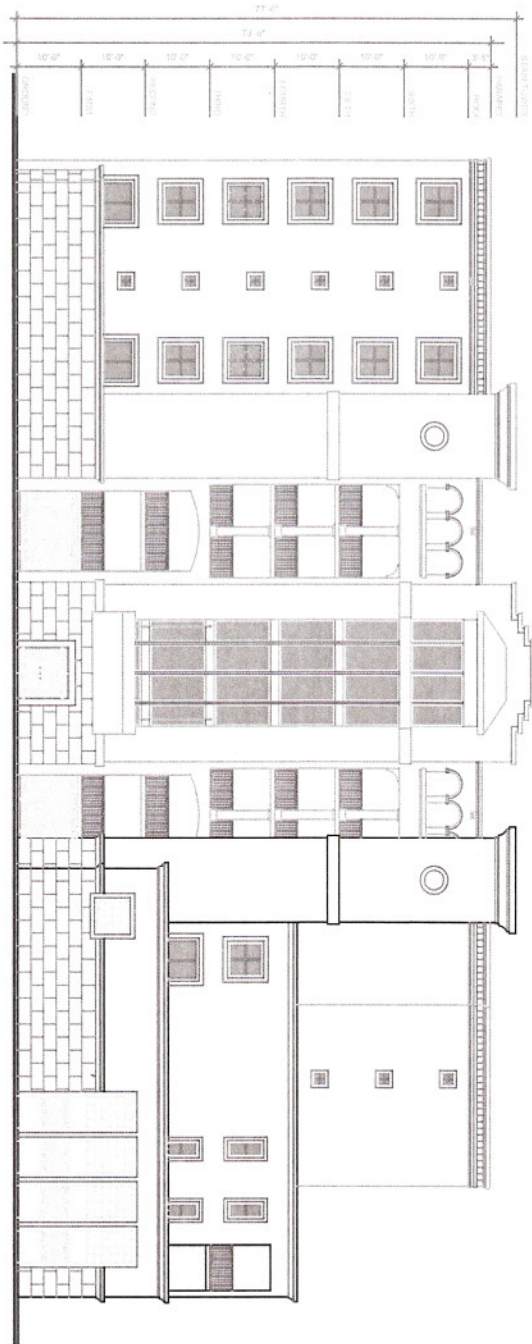
Rick McCormack, AIA, NCARB, Principal Architect

Jairo Juliao, Designer and Project Manager

Dave Mathew, Construction Administrator

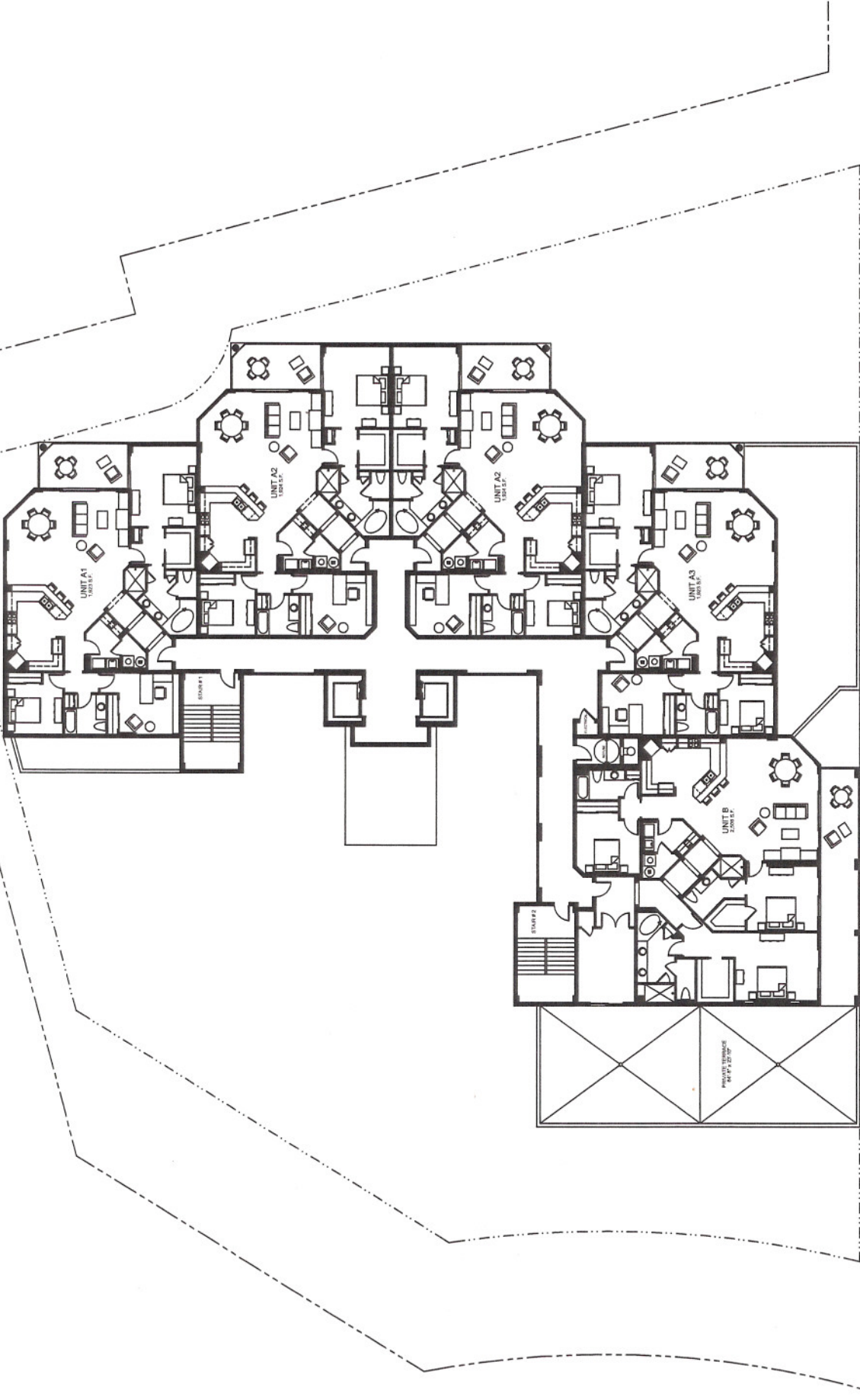


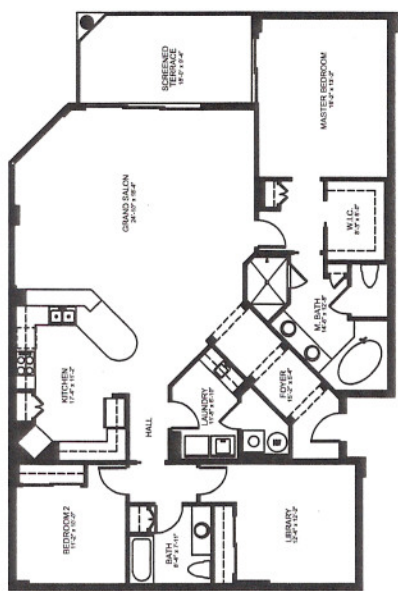
preliminary design
SOUTH ELEVATION
SCALE: 1/8" = 1'-0"



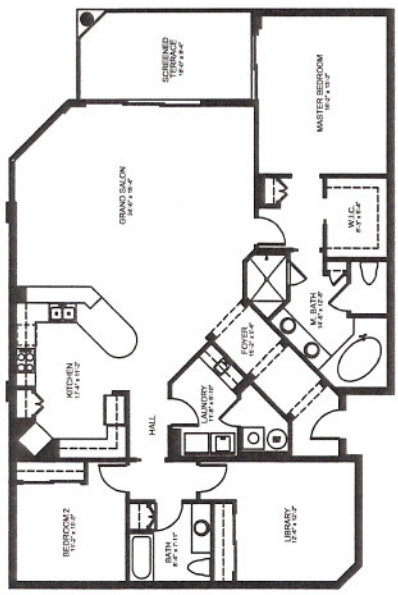
preliminary design
WEST (FRONT) ELEVATION
SCALE: 1/8" = 1'-0"

preliminary design
SECOND LEVEL FLOOR PLAN
Scale: 1/8" = 1'-0"

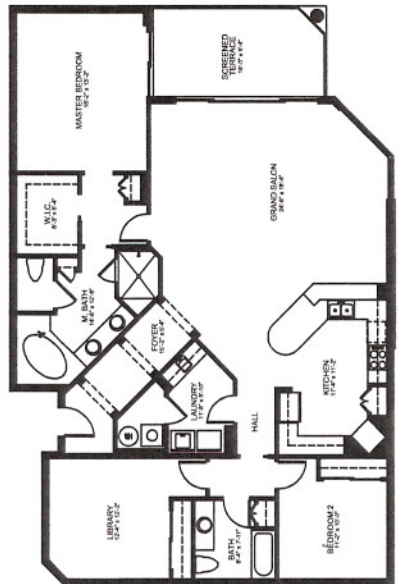




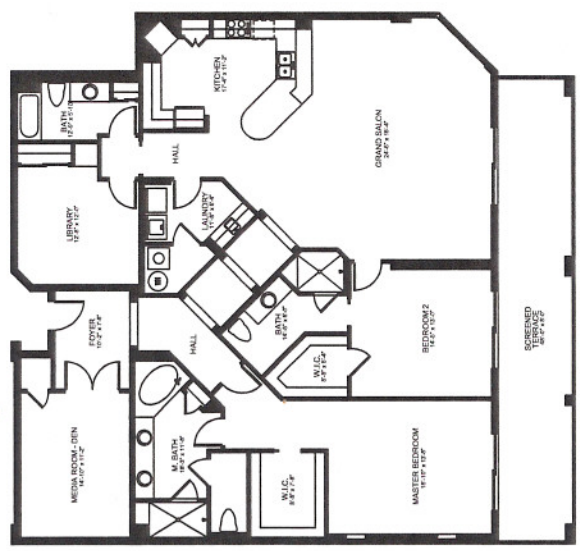
UNIT A1
 1.000 S.F. (91.50 M²)
 1.000 S.F. (91.50 M²)
 1.000 S.F. (91.50 M²)
 1.000 S.F. (91.50 M²)



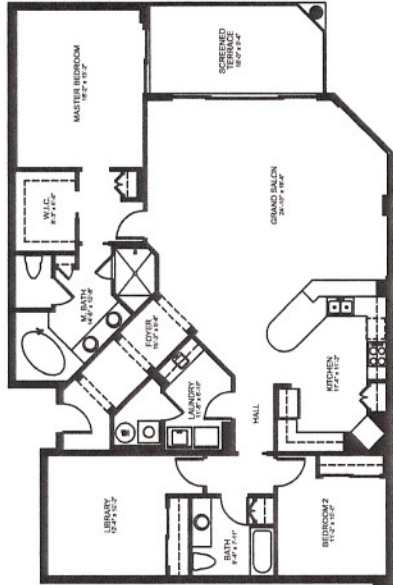
UNIT A2 REVERSE
 1.000 S.F. (91.50 M²)
 1.000 S.F. (91.50 M²)
 1.000 S.F. (91.50 M²)
 1.000 S.F. (91.50 M²)



UNIT A2
 1.000 S.F. (91.50 M²)
 1.000 S.F. (91.50 M²)
 1.000 S.F. (91.50 M²)
 1.000 S.F. (91.50 M²)



UNIT B
 1.000 S.F. (91.50 M²)
 1.000 S.F. (91.50 M²)
 1.000 S.F. (91.50 M²)
 1.000 S.F. (91.50 M²)



UNIT A3
 1.000 S.F. (91.50 M²)
 1.000 S.F. (91.50 M²)
 1.000 S.F. (91.50 M²)
 1.000 S.F. (91.50 M²)

preliminary design
 ENLARGED UNITS
 Scale: 3/16" = 1'-0"